

Data Path : Z:\pestpcbsrv\HPCHEM1\ECD\_P\Data\PP052621\  
 Data File : PP036187.D  
 Signal(s) : Signal #1: ECD1A.CH Signal #2: ECD2B.CH  
 Acq On : 27 May 2021 8:12  
 Operator : DD\AJ  
 Sample : M2262-09  
 Misc : AR1660 MDL 25 PPB  
 ALS Vial : 66 Sample Multiplier: 1

Instrument :  
 ECD\_P  
 ClientSampled :

Integration File signal 1: autoint1.e  
 Integration File signal 2: autoint2.e  
 Quant Time: May 27 09:58:49 2021  
 Quant Method : Z:\pestpcbsrv\HPCHEM1\ECD\_P\methods\PP052521.M  
 Quant Title : GC EXTRACTABLES  
 QLast Update : Wed May 26 00:48:29 2021  
 Response via : Initial Calibration  
 Integrator: ChemStation 6890 Scale Mode: Small noise peaks clipped

Volume Inj. : 2 µl  
 Signal #1 Phase : ZB-MR1 Signal #2 Phase: ZB-MR2  
 Signal #1 Info : 30Mx0.32mmx 0.50µ Signal #2 Info : 30M x 0.32mm x 0.25µm

Compound	RT#1	RT#2	Resp#1	Resp#2	ng/ml	ng/ml
System Monitoring Compounds						
1) SA Tetrachlo...	4.967	3.965	742870	462049	16.690	16.555
2) SA Decachlor...	10.997	9.272	783803	415374	18.340	18.106
Target Compounds						
3) L1 AR-1016-1	6.286	5.220	46448	25670	28.980	27.559
4) L1 AR-1016-2	6.310	5.241	63796	34008	28.154	26.031
5) L1 AR-1016-3	6.376	5.432	42885	19183	29.616	27.129
6) L1 AR-1016-4	6.484	5.484	32046	14082	26.464	26.509
7) L1 AR-1016-5	6.798	5.711	34533	21095	29.161	30.789
9) L2 AR-1221-2	5.319	4.316	14659	9263	35.167	38.473
10) L2 AR-1221-3	5.402	4.410	24811	14235	19.775	18.444
11) L3 AR-1232-1	5.402	4.410	24811	14235	25.677	24.336
12) L3 AR-1232-2	5.991	5.241	36174	34008	71.987	64.873
13) L3 AR-1232-3	6.310	5.432	63796	19183	68.452	69.247
14) L3 AR-1232-4	6.484	5.530	32046	16270	66.281	71.704
15) L3 AR-1232-5	6.581	5.711	30825	21095	95.901	84.644
16) L4 AR-1242-1	6.286	5.220	46448	25670	38.563	35.654
17) L4 AR-1242-2	6.310	5.241	63796	34008	37.873	34.763
18) L4 AR-1242-3	6.376	5.432	42885	19183	39.073	35.765
19) L4 AR-1242-4	6.484	5.530	32046	16270	35.092	32.969
20) L4 AR-1242-5	0.000	6.092	0	11000	N.D.	16.998 #
21) L5 AR-1248-1	6.286	5.220	46448	25670	49.892	47.852
22) L5 AR-1248-2	6.581	5.484	30825	14082	25.783	20.179
23) L5 AR-1248-3	6.798	5.530	34533	16270	23.834	22.607
24) L5 AR-1248-4	7.195f	5.711	25588	21095	16.067	23.885 #
26) L6 AR-1254-1	7.195	6.092	25588	11000	15.794	8.418 #
27) L6 AR-1254-2	7.423	6.251	25298	13085	10.270	11.349
28) L6 AR-1254-3	7.808	6.692f	25017	16998	9.483	8.928
29) L6 AR-1254-4	8.101	0.000	17633	0	8.736	N.D. #
30) L6 AR-1254-5	8.529	7.341	82566	44486	36.388	26.075 #
31) L7 AR-1260-1	7.972	6.810	63988	31460	31.588	25.214
32) L7 AR-1260-2	8.237	7.008	79941	39030	32.723	25.900
33) L7 AR-1260-3	8.603	7.162	50878	36936	27.397	26.281
34) L7 AR-1260-4	8.833	7.647	66292	32550	29.687	27.842
35) L7 AR-1260-5	9.162	7.895	122535	69859	28.699	25.236
36) L8 AR-1262-1	8.603	7.341	50878	44486	20.185	49.207 #
37) L8 AR-1262-2	9.162	7.895	122535	69859	27.191	23.465
38) L8 AR-1262-3	9.496f	8.185	77429	46592	23.995	39.210 #
39) L8 AR-1262-4	9.552	8.245	46988	57827	17.520	26.231 #
40) L8 AR-1262-5	10.238	8.744	38290	21142	21.497	20.787
41) L9 AR-1268-1	9.496f	8.185	77429	46592	14.954	13.718
42) L9 AR-1268-2	9.552	8.245	46988	57827	9.401	18.724 #
44) L9 AR-1268-4	10.238	8.744	38290	21142	19.623	19.187

Data Path : Z:\pestpcbsrv\HPCHEM1\ECD\_P\Data\PP052621\  
 Data File : PP036187.D  
 Signal(s) : Signal #1: ECD1A.CH Signal #2: ECD2B.CH  
 Acq On : 27 May 2021 8:12  
 Operator : DD\AJ  
 Sample : M2262-09  
 Misc : AR1660 MDL 25 PPB  
 ALS Vial : 66 Sample Multiplier: 1

Instrument :  
 ECD\_P  
 ClientSampleId :

Integration File signal 1: autoint1.e  
 Integration File signal 2: autoint2.e  
 Quant Time: May 27 09:58:49 2021  
 Quant Method : Z:\pestpcbsrv\HPCHEM1\ECD\_P\methods\PP052521.M  
 Quant Title : GC EXTRACTABLES  
 QLast Update : Wed May 26 00:48:29 2021  
 Response via : Initial Calibration  
 Integrator: ChemStation 6890 Scale Mode: Small noise peaks clipped

Volume Inj. : 2 µl  
 Signal #1 Phase : ZB-MR1 Signal #2 Phase: ZB-MR2  
 Signal #1 Info : 30Mx0.32mmx 0.50µ Signal #2 Info : 30M x 0.32mm x 0.25µm

	Compound	RT#1	RT#2	Resp#1	Resp#2	ng/ml	ng/ml
45)	L9 AR-1268-5	0.000	9.030	0	9876	N.D.	1.157 #

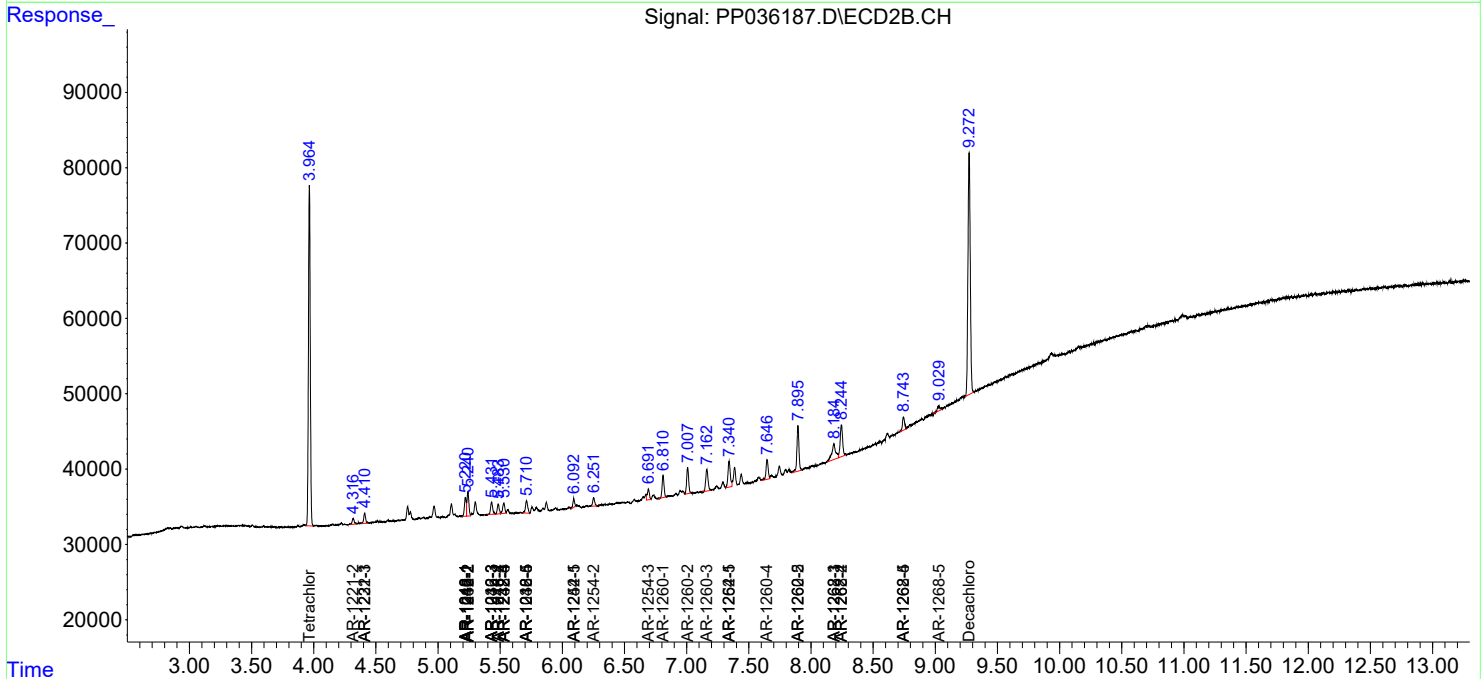
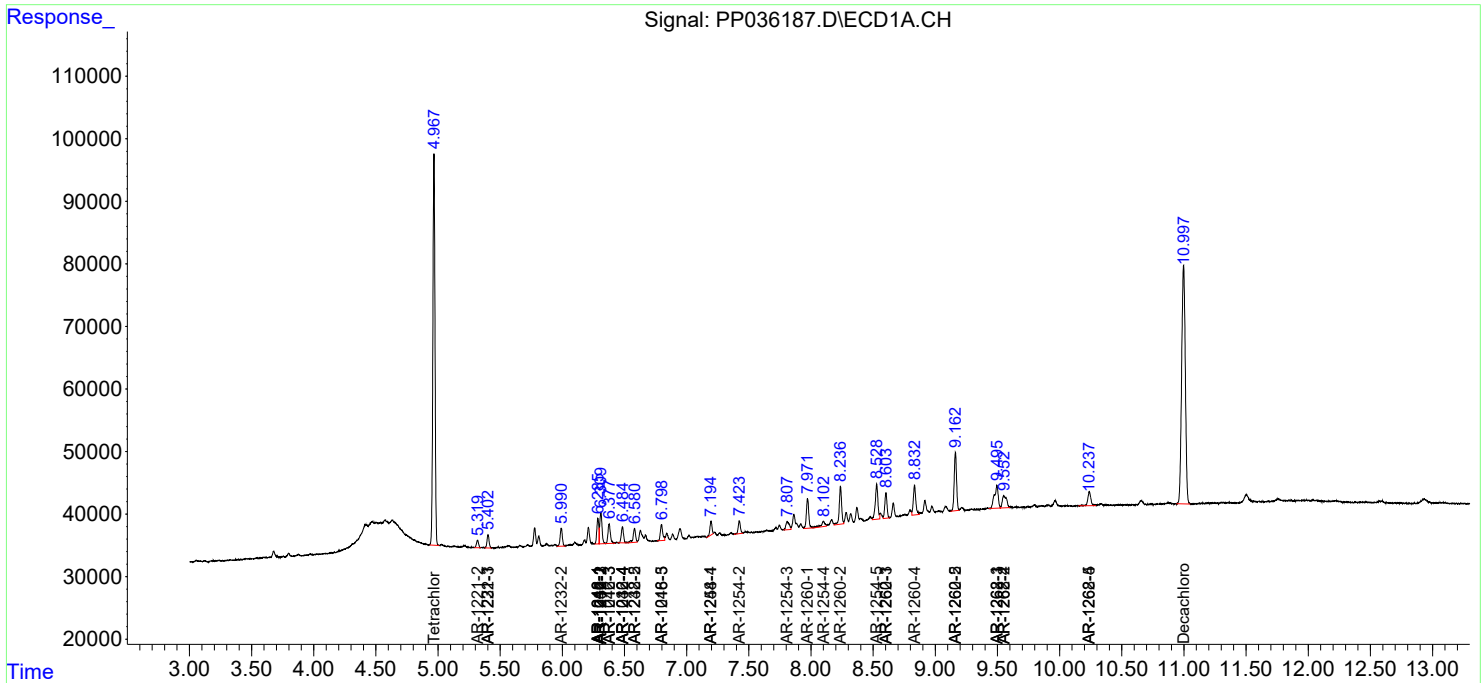
(f)=RT Delta > 1/2 Window (#)=Amounts differ by > 25% (m)=manual int.

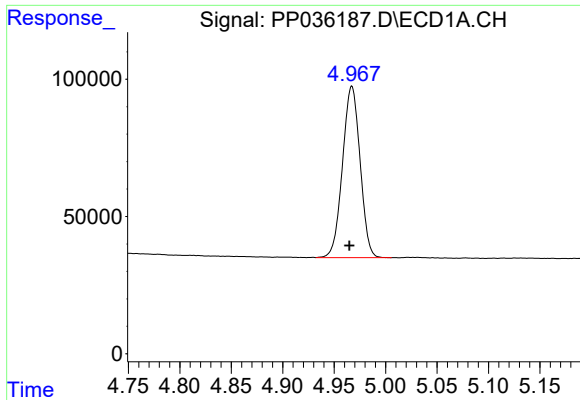
Data Path : Z:\pestpcbsrv\HPCHEM1\ECD\_P\Data\PP052621\  
 Data File : PP036187.D  
 Signal(s) : Signal #1: ECD1A.CH Signal #2: ECD2B.CH  
 Acq On : 27 May 2021 8:12  
 Operator : DD\AJ  
 Sample : M2262-09  
 Misc : AR1660 MDL 25 PPB  
 ALS Vial : 66 Sample Multiplier: 1

Instrument :  
 ECD\_P  
 ClientSampled :

Integration File signal 1: autoint1.e  
 Integration File signal 2: autoint2.e  
 Quant Time: May 27 09:58:49 2021  
 Quant Method : Z:\pestpcbsrv\HPCHEM1\ECD\_P\methods\PP052521.M  
 Quant Title : GC EXTRACTABLES  
 QLast Update : Wed May 26 00:48:29 2021  
 Response via : Initial Calibration  
 Integrator: ChemStation 6890 Scale Mode: Small noise peaks clipped

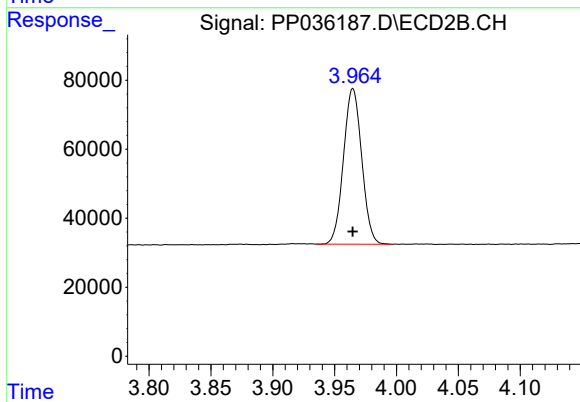
Volume Inj. : 2 µl  
 Signal #1 Phase : ZB-MR1 Signal #2 Phase: ZB-MR2  
 Signal #1 Info : 30Mx0.32mmx 0.50µ Signal #2 Info : 30M x 0.32mm x 0.25µm



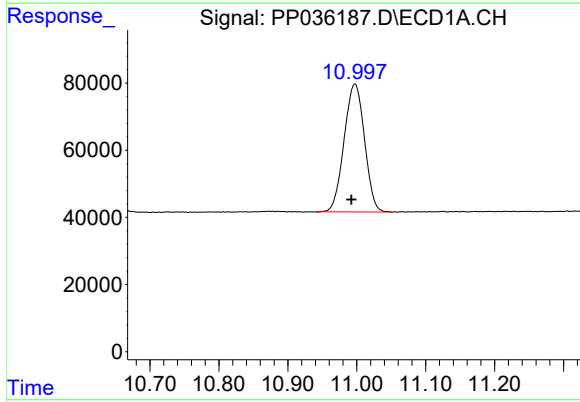


#1 Tetrachloro-m-xylene  
 R.T.: 4.967 min  
 Delta R.T.: 0.002 min  
 Response: 742870  
 Conc: 16.69 ng/ml

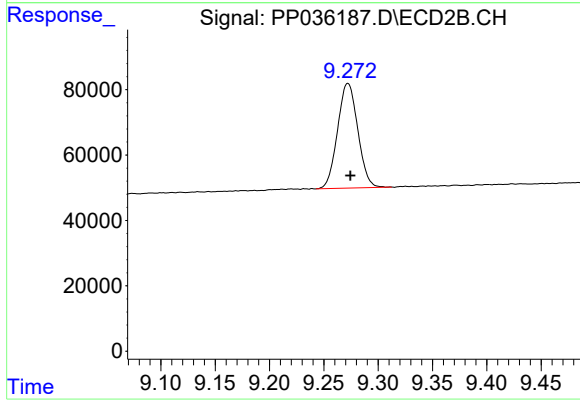
Instrument :  
 ECD\_P  
 ClientSampleId :



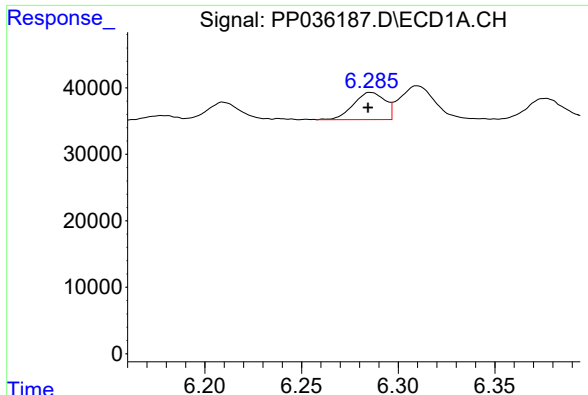
#1 Tetrachloro-m-xylene  
 R.T.: 3.965 min  
 Delta R.T.: 0.000 min  
 Response: 462049  
 Conc: 16.56 ng/ml



#2 Decachlorobiphenyl  
 R.T.: 10.997 min  
 Delta R.T.: 0.005 min  
 Response: 783803  
 Conc: 18.34 ng/ml

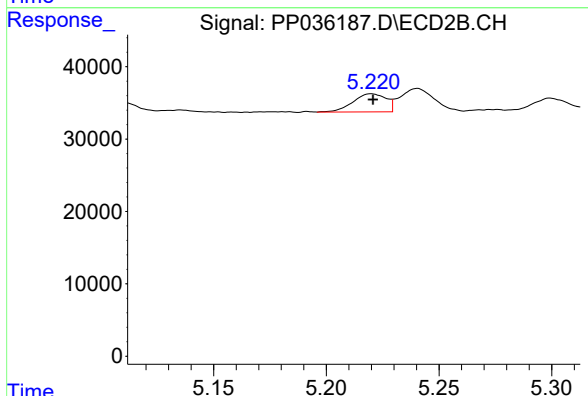


#2 Decachlorobiphenyl  
 R.T.: 9.272 min  
 Delta R.T.: -0.002 min  
 Response: 415374  
 Conc: 18.11 ng/ml

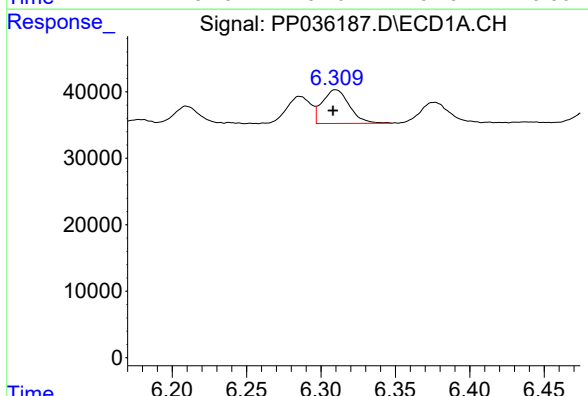


#3 AR-1016-1  
 R.T.: 6.286 min  
 Delta R.T.: 0.001 min  
 Response: 46448  
 Conc: 28.98 ng/ml

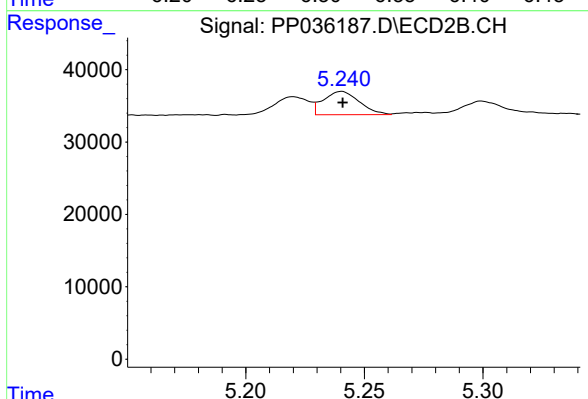
Instrument :  
 ECD\_P  
 ClientSampleId :



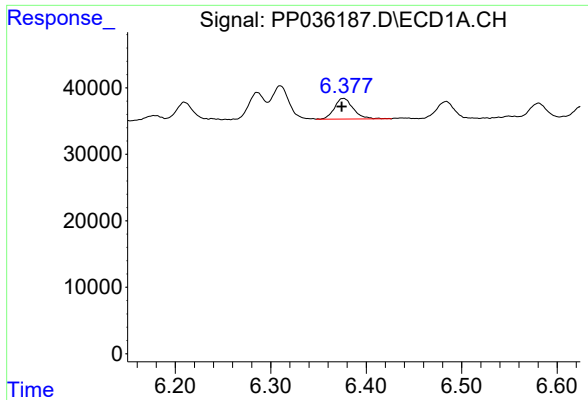
#3 AR-1016-1  
 R.T.: 5.220 min  
 Delta R.T.: 0.000 min  
 Response: 25670  
 Conc: 27.56 ng/ml



#4 AR-1016-2  
 R.T.: 6.310 min  
 Delta R.T.: 0.002 min  
 Response: 63796  
 Conc: 28.15 ng/ml



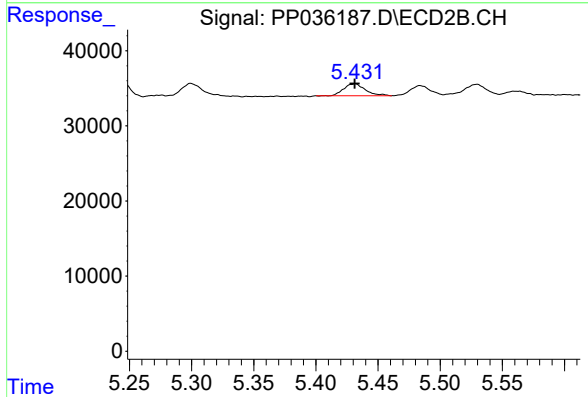
#4 AR-1016-2  
 R.T.: 5.241 min  
 Delta R.T.: 0.000 min  
 Response: 34008  
 Conc: 26.03 ng/ml



#5 AR-1016-3

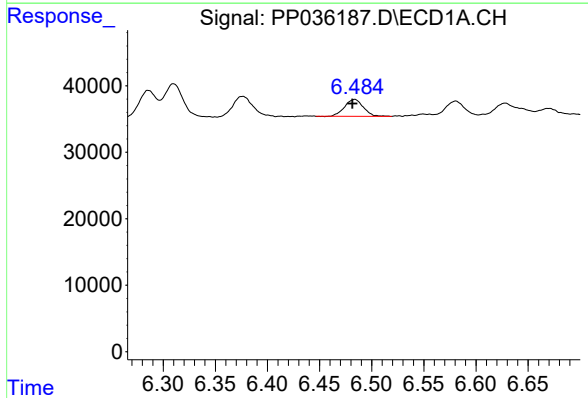
R.T.: 6.376 min  
 Delta R.T.: 0.002 min  
 Response: 42885  
 Conc: 29.62 ng/ml

Instrument :  
 ECD\_P  
 ClientSampleId :



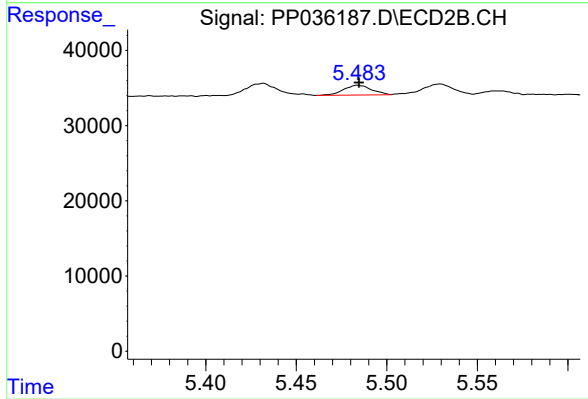
#5 AR-1016-3

R.T.: 5.432 min  
 Delta R.T.: 0.000 min  
 Response: 19183  
 Conc: 27.13 ng/ml



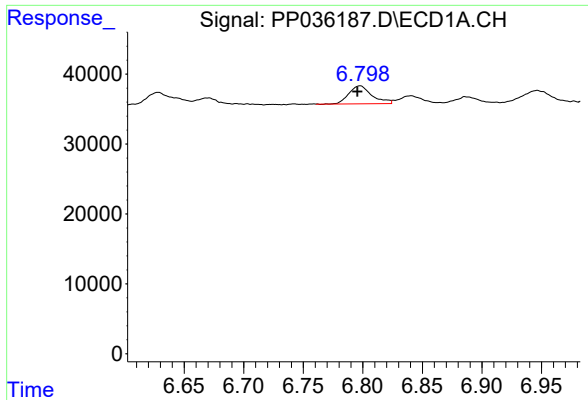
#6 AR-1016-4

R.T.: 6.484 min  
 Delta R.T.: 0.002 min  
 Response: 32046  
 Conc: 26.46 ng/ml



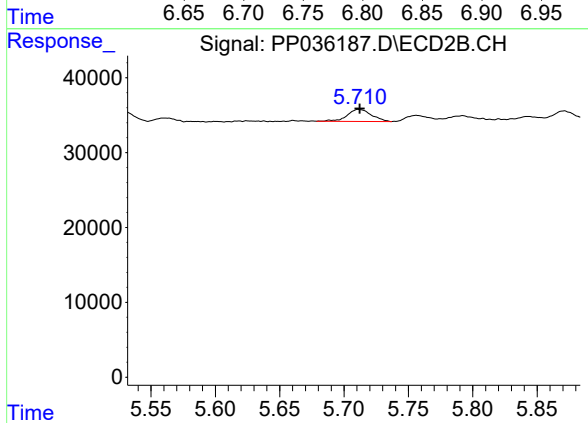
#6 AR-1016-4

R.T.: 5.484 min  
 Delta R.T.: 0.000 min  
 Response: 14082  
 Conc: 26.51 ng/ml

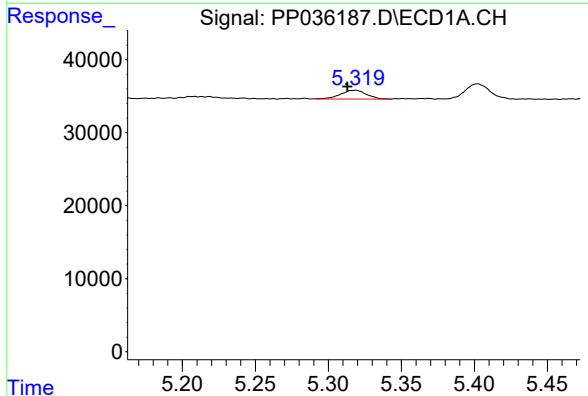


#7 AR-1016-5  
 R.T.: 6.798 min  
 Delta R.T.: 0.002 min  
 Response: 34533  
 Conc: 29.16 ng/ml

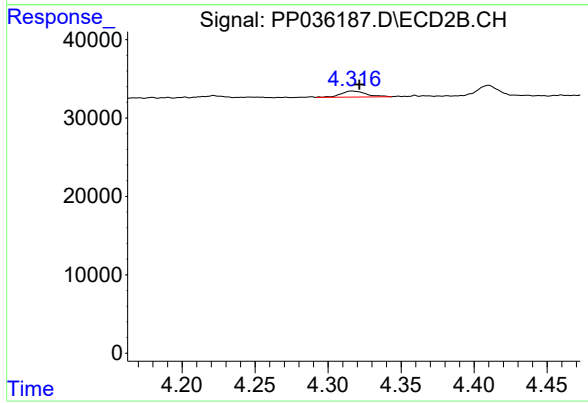
Instrument :  
 ECD\_P  
 ClientSampled :



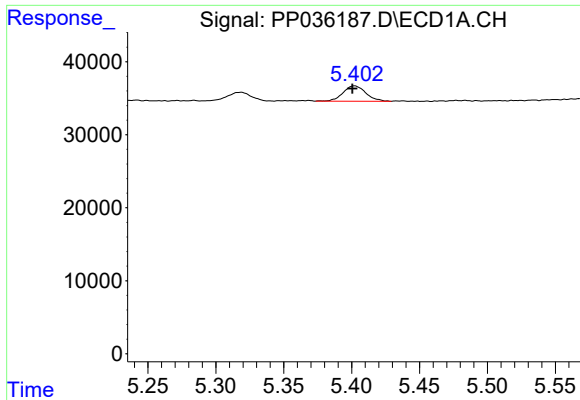
#7 AR-1016-5  
 R.T.: 5.711 min  
 Delta R.T.: -0.001 min  
 Response: 21095  
 Conc: 30.79 ng/ml



#9 AR-1221-2  
 R.T.: 5.319 min  
 Delta R.T.: 0.006 min  
 Response: 14659  
 Conc: 35.17 ng/ml

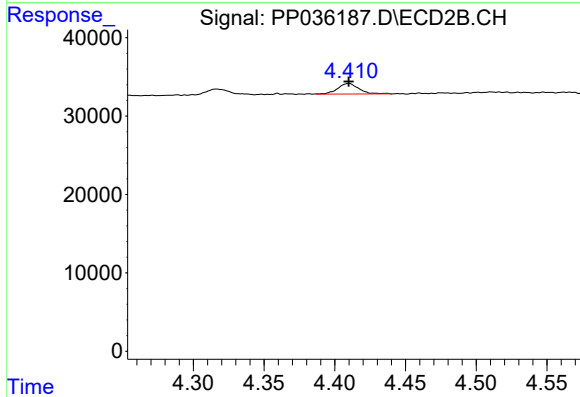


#9 AR-1221-2  
 R.T.: 4.316 min  
 Delta R.T.: -0.005 min  
 Response: 9263  
 Conc: 38.47 ng/ml

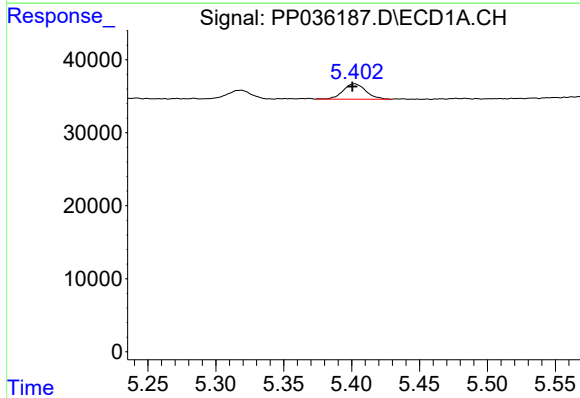


#10 AR-1221-3  
 R.T.: 5.402 min  
 Delta R.T.: 0.002 min  
 Response: 24811  
 Conc: 19.78 ng/ml

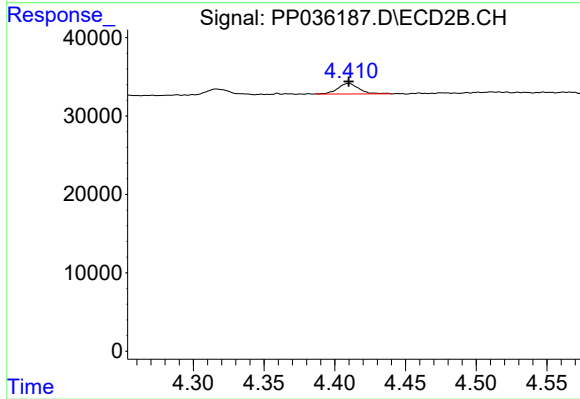
Instrument :  
 ECD\_P  
 ClientSampled :



#10 AR-1221-3  
 R.T.: 4.410 min  
 Delta R.T.: 0.000 min  
 Response: 14235  
 Conc: 18.44 ng/ml

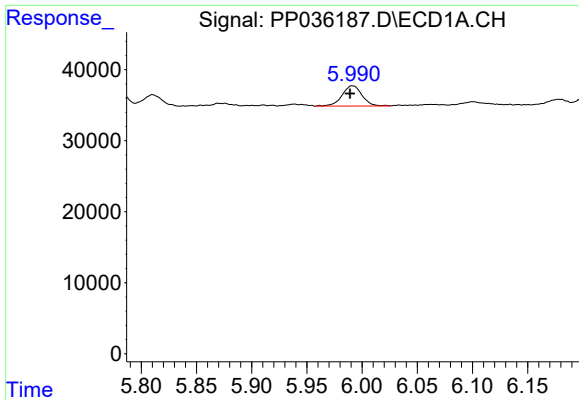


#11 AR-1232-1  
 R.T.: 5.402 min  
 Delta R.T.: 0.002 min  
 Response: 24811  
 Conc: 25.68 ng/ml



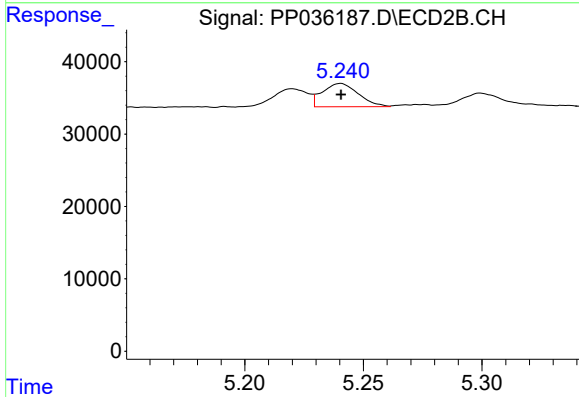
#11 AR-1232-1  
 R.T.: 4.410 min  
 Delta R.T.: 0.000 min  
 Response: 14235  
 Conc: 24.34 ng/ml



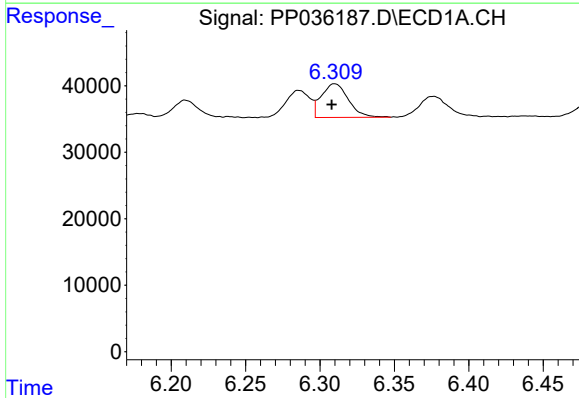


#12 AR-1232-2  
 R.T.: 5.991 min  
 Delta R.T.: 0.002 min  
 Response: 36174  
 Conc: 71.99 ng/ml

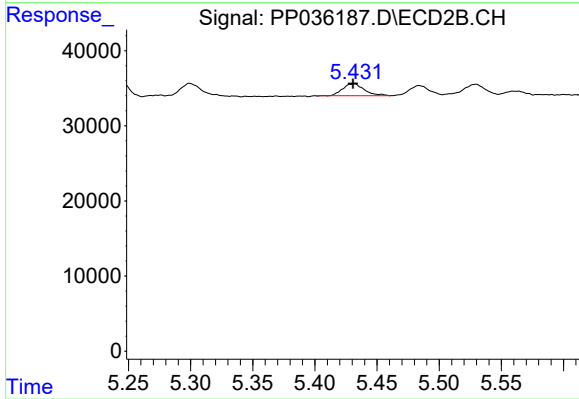
Instrument :  
 ECD\_P  
 ClientSampleId :



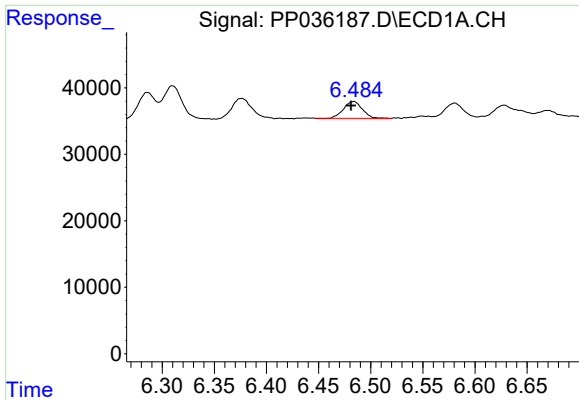
#12 AR-1232-2  
 R.T.: 5.241 min  
 Delta R.T.: 0.000 min  
 Response: 34008  
 Conc: 64.87 ng/ml



#13 AR-1232-3  
 R.T.: 6.310 min  
 Delta R.T.: 0.002 min  
 Response: 63796  
 Conc: 68.45 ng/ml



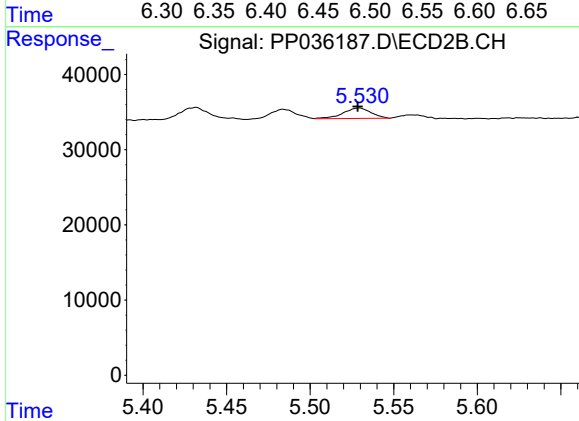
#13 AR-1232-3  
 R.T.: 5.432 min  
 Delta R.T.: 0.001 min  
 Response: 19183  
 Conc: 69.25 ng/ml



#14 AR-1232-4

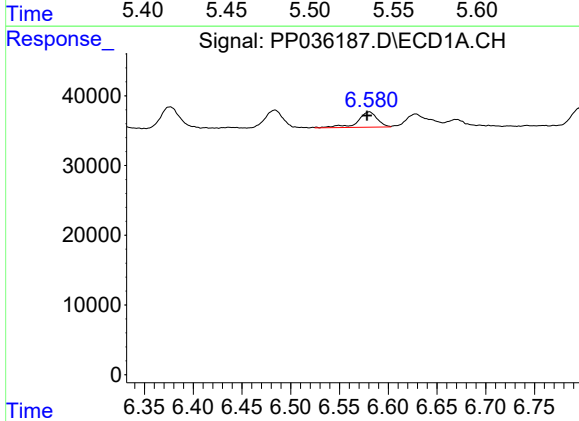
R.T.: 6.484 min  
 Delta R.T.: 0.003 min  
 Response: 32046  
 Conc: 66.28 ng/ml

Instrument :  
 ECD\_P  
 ClientSampled :



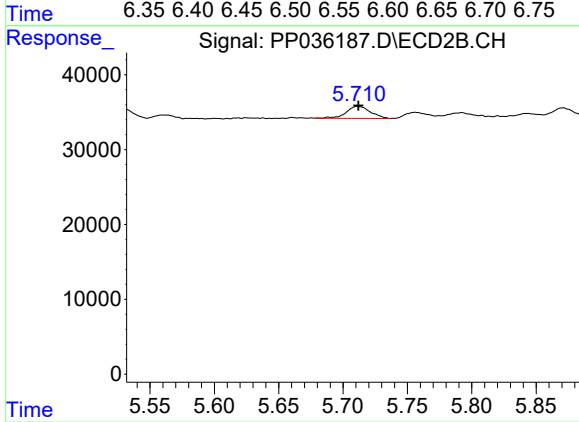
#14 AR-1232-4

R.T.: 5.530 min  
 Delta R.T.: 0.001 min  
 Response: 16270  
 Conc: 71.70 ng/ml



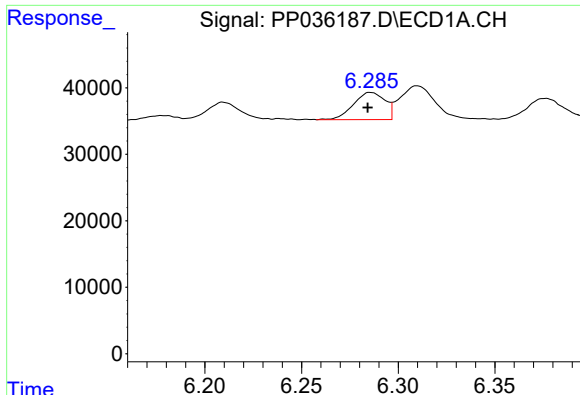
#15 AR-1232-5

R.T.: 6.581 min  
 Delta R.T.: 0.002 min  
 Response: 30825  
 Conc: 95.90 ng/ml



#15 AR-1232-5

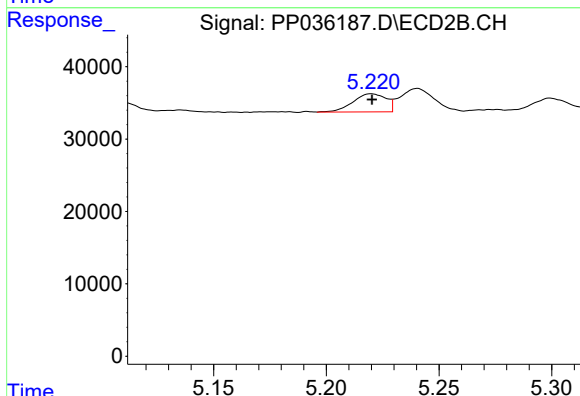
R.T.: 5.711 min  
 Delta R.T.: 0.000 min  
 Response: 21095  
 Conc: 84.64 ng/ml



#16 AR-1242-1

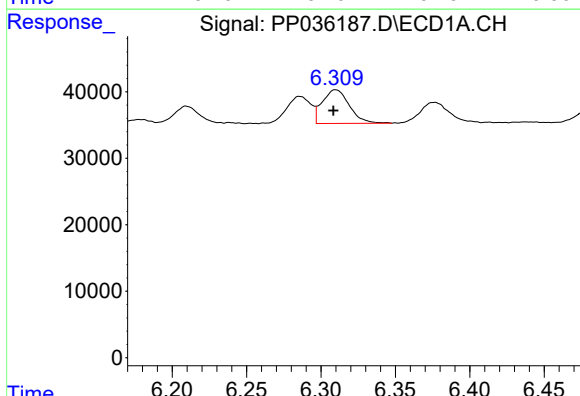
R.T.: 6.286 min  
 Delta R.T.: 0.002 min  
 Response: 46448  
 Conc: 38.56 ng/ml

Instrument :  
 ECD\_P  
 ClientSampled :



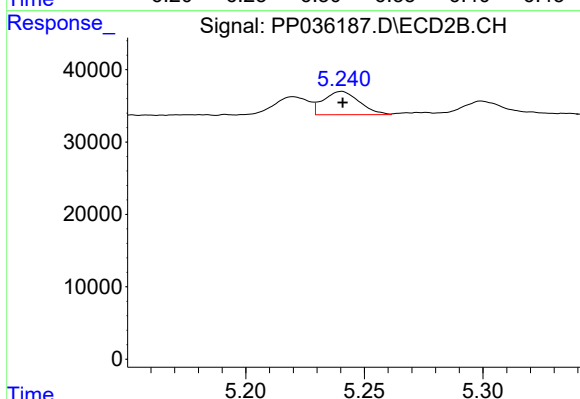
#16 AR-1242-1

R.T.: 5.220 min  
 Delta R.T.: 0.000 min  
 Response: 25670  
 Conc: 35.65 ng/ml



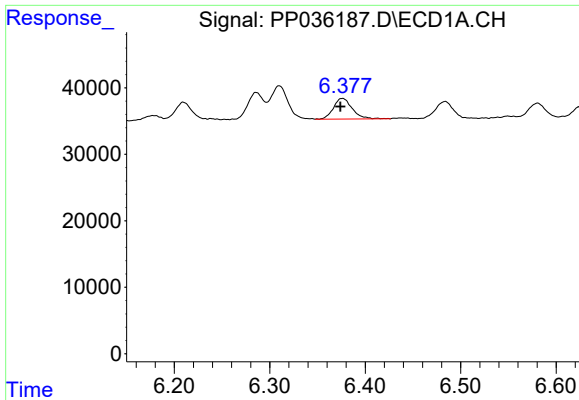
#17 AR-1242-2

R.T.: 6.310 min  
 Delta R.T.: 0.001 min  
 Response: 63796  
 Conc: 37.87 ng/ml



#17 AR-1242-2

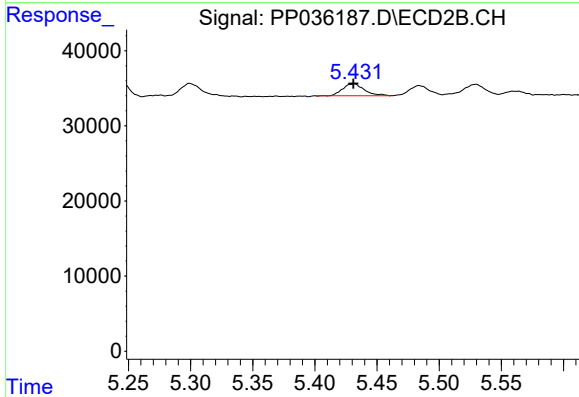
R.T.: 5.241 min  
 Delta R.T.: 0.000 min  
 Response: 34008  
 Conc: 34.76 ng/ml



#18 AR-1242-3

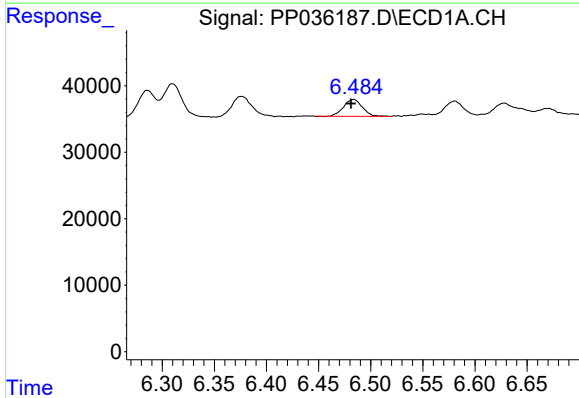
R.T.: 6.376 min  
 Delta R.T.: 0.002 min  
 Response: 42885  
 Conc: 39.07 ng/ml

Instrument :  
 ECD\_P  
 ClientSampleId :



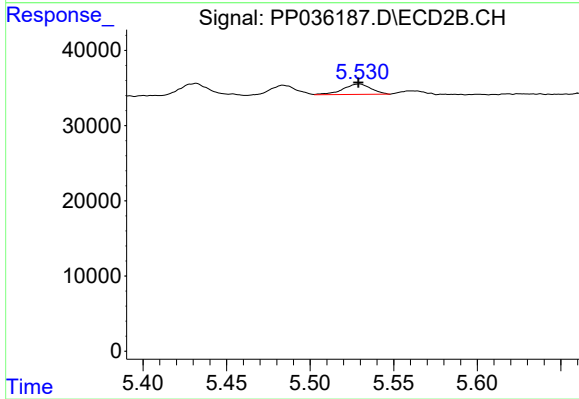
#18 AR-1242-3

R.T.: 5.432 min  
 Delta R.T.: 0.000 min  
 Response: 19183  
 Conc: 35.76 ng/ml



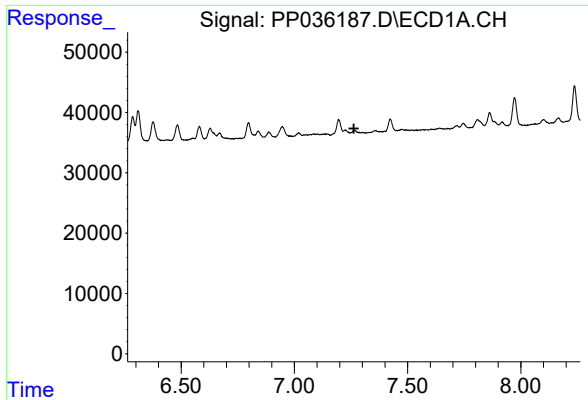
#19 AR-1242-4

R.T.: 6.484 min  
 Delta R.T.: 0.003 min  
 Response: 32046  
 Conc: 35.09 ng/ml



#19 AR-1242-4

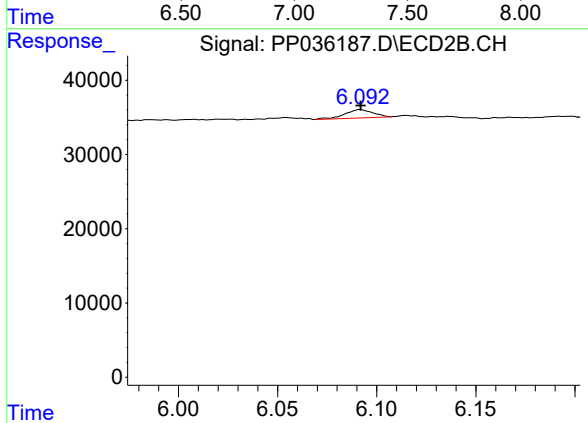
R.T.: 5.530 min  
 Delta R.T.: 0.000 min  
 Response: 16270  
 Conc: 32.97 ng/ml



#20 AR-1242-5

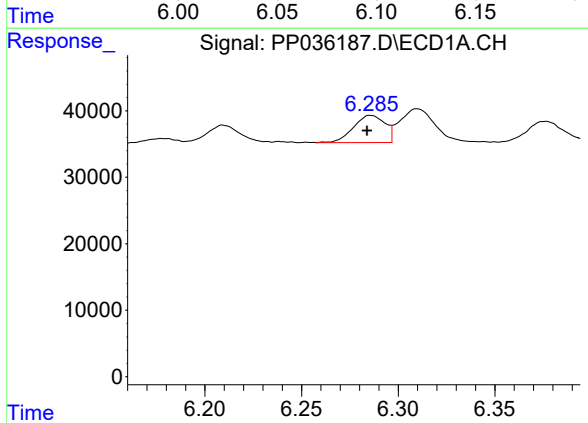
R.T.: 0.000 min  
 Exp R.T.: 7.263 min  
 Response: 0  
 Conc: N.D.

Instrument :  
 ECD\_P  
 ClientSampled :



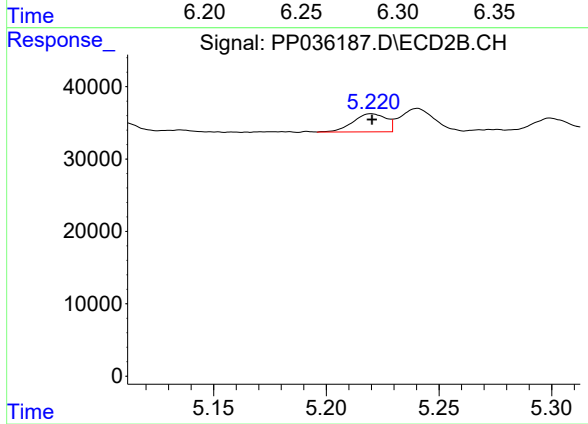
#20 AR-1242-5

R.T.: 6.092 min  
 Delta R.T.: 0.000 min  
 Response: 11000  
 Conc: 17.00 ng/ml



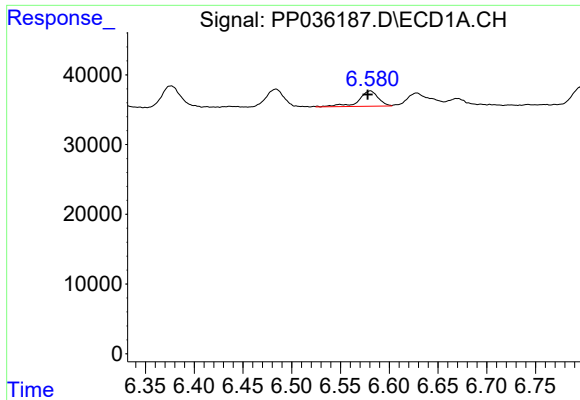
#21 AR-1248-1

R.T.: 6.286 min  
 Delta R.T.: 0.002 min  
 Response: 46448  
 Conc: 49.89 ng/ml



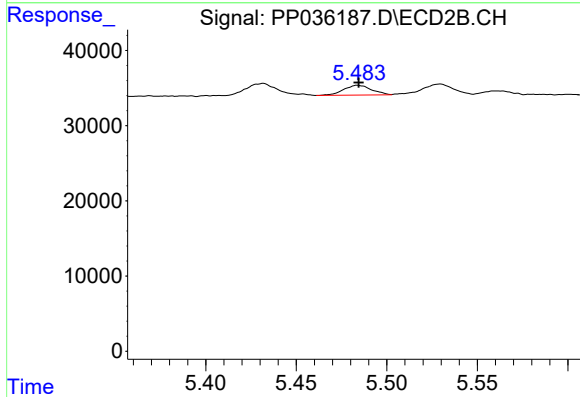
#21 AR-1248-1

R.T.: 5.220 min  
 Delta R.T.: 0.000 min  
 Response: 25670  
 Conc: 47.85 ng/ml

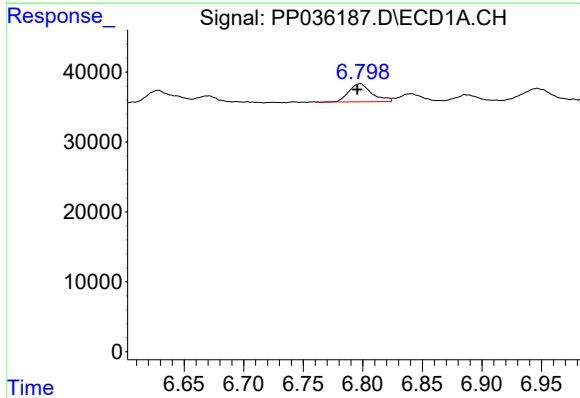


#22 AR-1248-2  
 R.T.: 6.581 min  
 Delta R.T.: 0.003 min  
 Response: 30825  
 Conc: 25.78 ng/ml

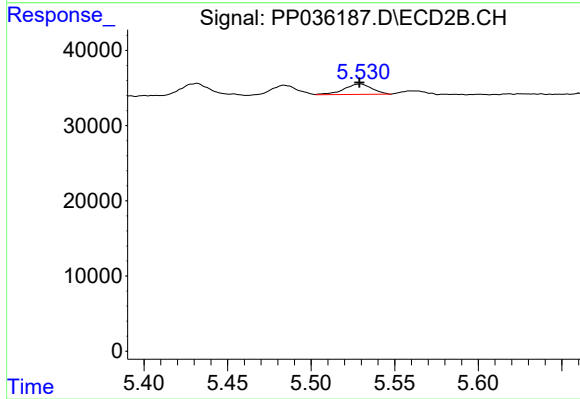
Instrument :  
 ECD\_P  
 ClientSampleId :



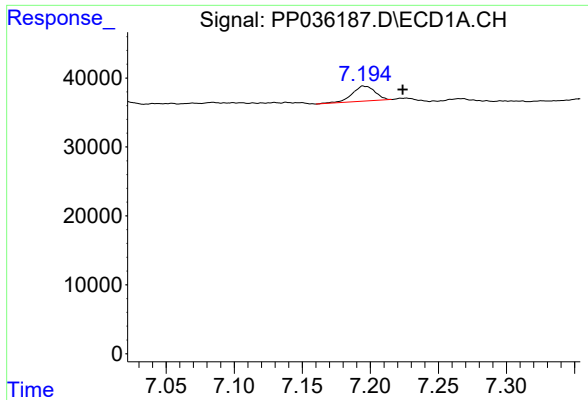
#22 AR-1248-2  
 R.T.: 5.484 min  
 Delta R.T.: 0.000 min  
 Response: 14082  
 Conc: 20.18 ng/ml



#23 AR-1248-3  
 R.T.: 6.798 min  
 Delta R.T.: 0.002 min  
 Response: 34533  
 Conc: 23.83 ng/ml



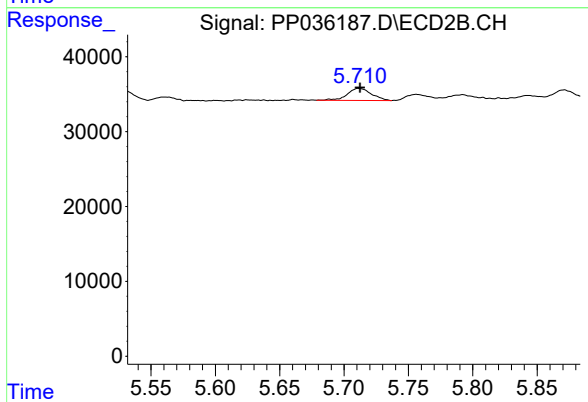
#23 AR-1248-3  
 R.T.: 5.530 min  
 Delta R.T.: 0.000 min  
 Response: 16270  
 Conc: 22.61 ng/ml



#24 AR-1248-4

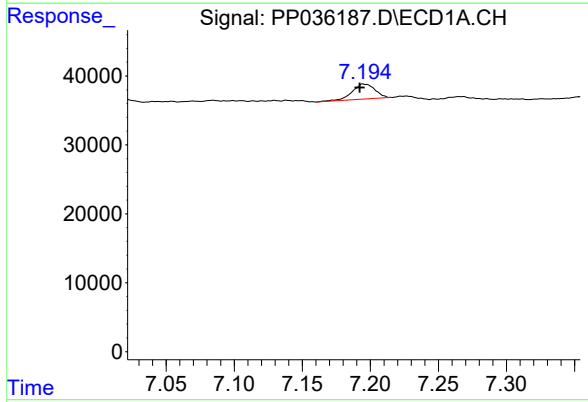
R.T.: 7.195 min  
 Delta R.T.: -0.029 min  
 Response: 25588  
 Conc: 16.07 ng/ml

Instrument :  
 ECD\_P  
 ClientSampleId :



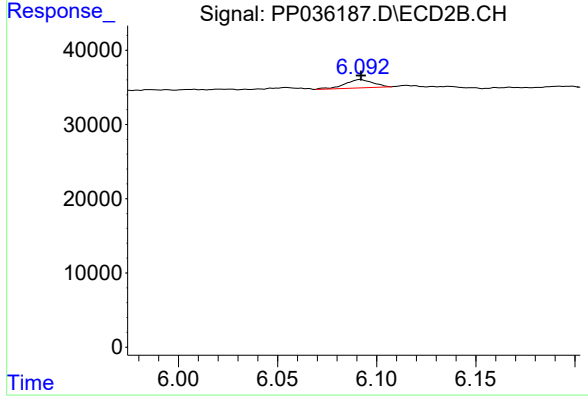
#24 AR-1248-4

R.T.: 5.711 min  
 Delta R.T.: -0.001 min  
 Response: 21095  
 Conc: 23.88 ng/ml



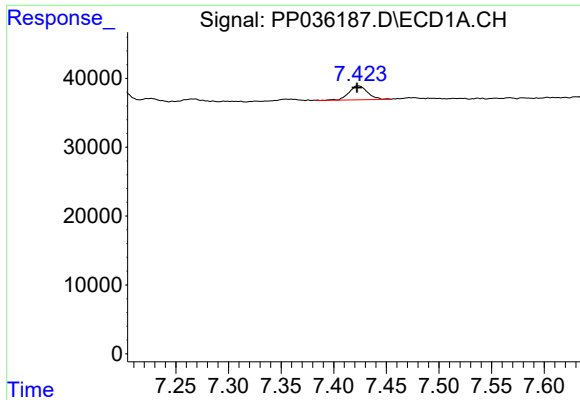
#26 AR-1254-1

R.T.: 7.195 min  
 Delta R.T.: 0.003 min  
 Response: 25588  
 Conc: 15.79 ng/ml



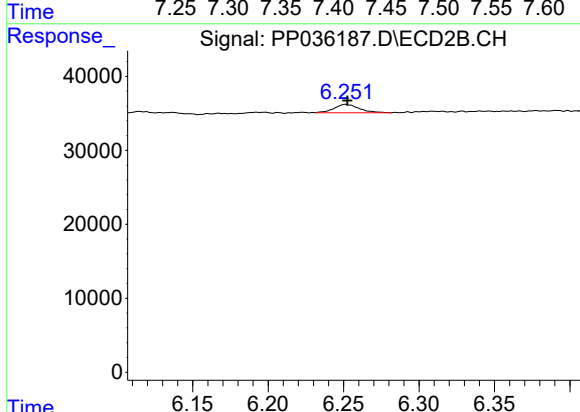
#26 AR-1254-1

R.T.: 6.092 min  
 Delta R.T.: 0.000 min  
 Response: 11000  
 Conc: 8.42 ng/ml

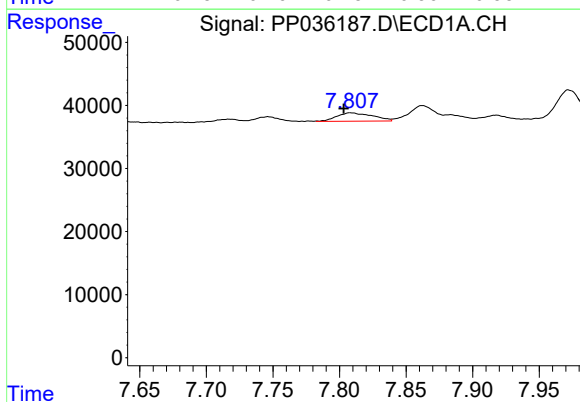


#27 AR-1254-2  
 R.T.: 7.423 min  
 Delta R.T.: 0.001 min  
 Response: 25298  
 Conc: 10.27 ng/ml

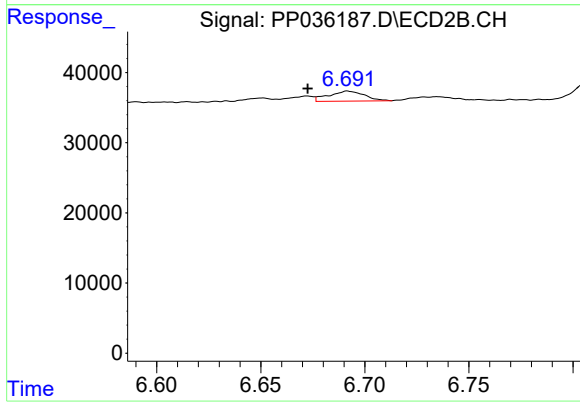
Instrument :  
 ECD\_P  
 ClientSampleId :



#27 AR-1254-2  
 R.T.: 6.251 min  
 Delta R.T.: -0.002 min  
 Response: 13085  
 Conc: 11.35 ng/ml

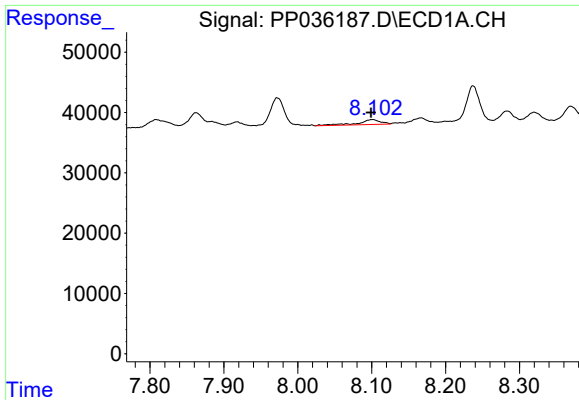


#28 AR-1254-3  
 R.T.: 7.808 min  
 Delta R.T.: 0.005 min  
 Response: 25017  
 Conc: 9.48 ng/ml



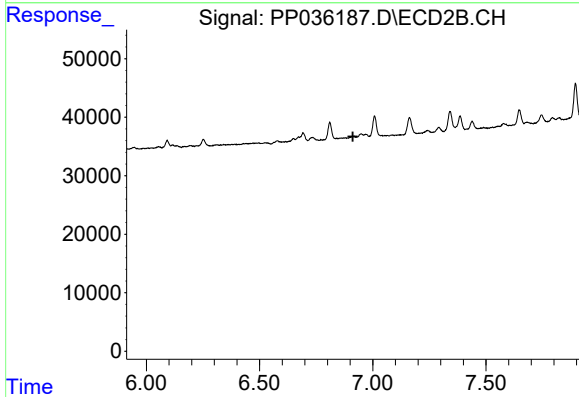
#28 AR-1254-3  
 R.T.: 6.692 min  
 Delta R.T.: 0.019 min  
 Response: 16998  
 Conc: 8.93 ng/ml



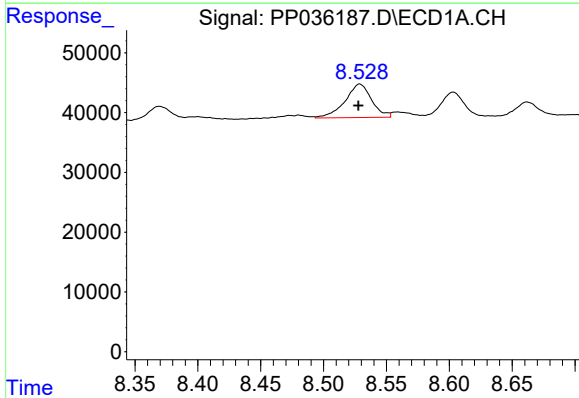


#29 AR-1254-4  
 R.T.: 8.101 min  
 Delta R.T.: 0.002 min  
 Response: 17633  
 Conc: 8.74 ng/ml

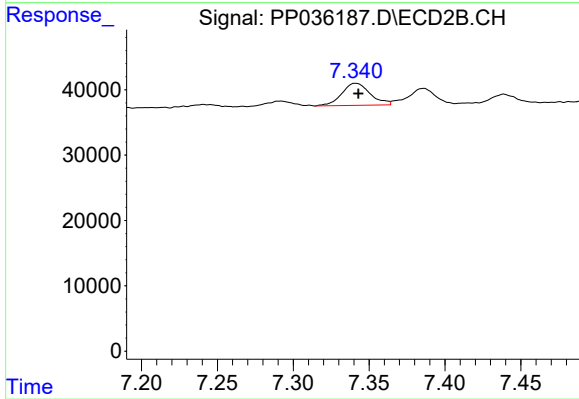
Instrument :  
 ECD\_P  
 ClientSampled :



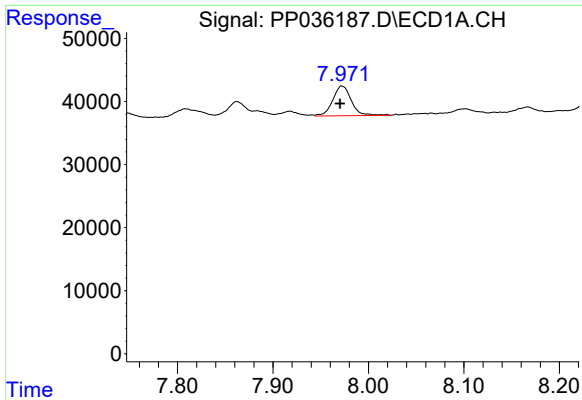
#29 AR-1254-4  
 R.T.: 0.000 min  
 Exp R.T. : 6.912 min  
 Response: 0  
 Conc: N.D.



#30 AR-1254-5  
 R.T.: 8.529 min  
 Delta R.T.: 0.001 min  
 Response: 82566  
 Conc: 36.39 ng/ml



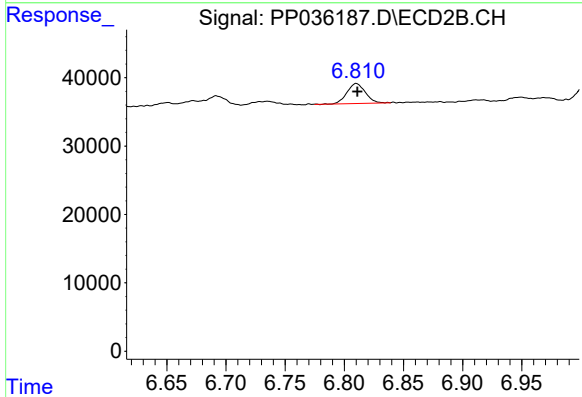
#30 AR-1254-5  
 R.T.: 7.341 min  
 Delta R.T.: -0.002 min  
 Response: 44486  
 Conc: 26.07 ng/ml



#31 AR-1260-1

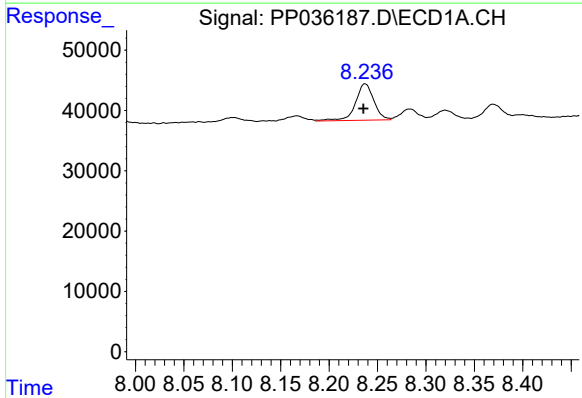
R.T.: 7.972 min  
 Delta R.T.: 0.002 min  
 Response: 63988  
 Conc: 31.59 ng/ml

Instrument :  
 ECD\_P  
 ClientSampled :



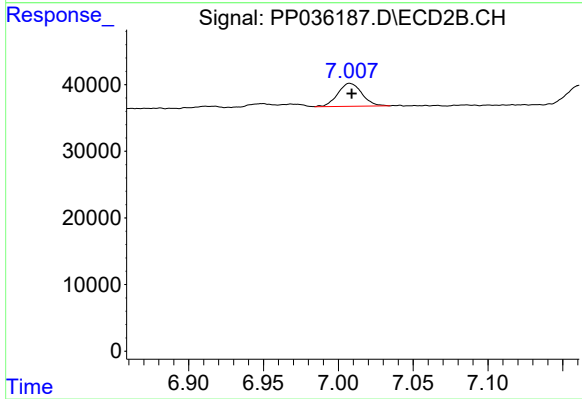
#31 AR-1260-1

R.T.: 6.810 min  
 Delta R.T.: 0.000 min  
 Response: 31460  
 Conc: 25.21 ng/ml



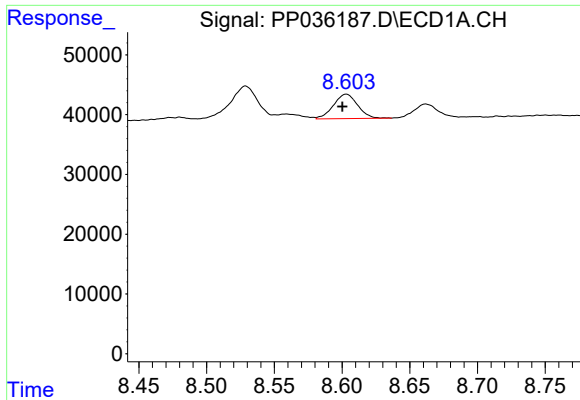
#32 AR-1260-2

R.T.: 8.237 min  
 Delta R.T.: 0.002 min  
 Response: 79941  
 Conc: 32.72 ng/ml



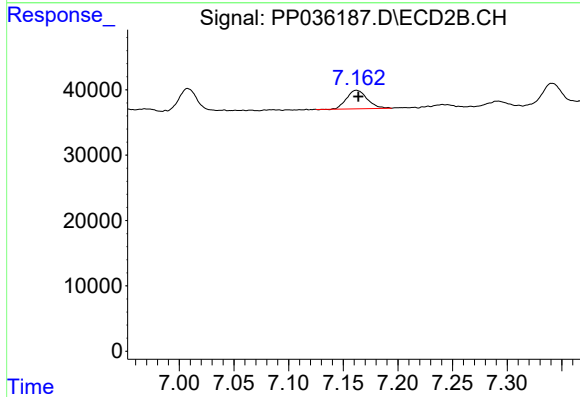
#32 AR-1260-2

R.T.: 7.008 min  
 Delta R.T.: -0.001 min  
 Response: 39030  
 Conc: 25.90 ng/ml

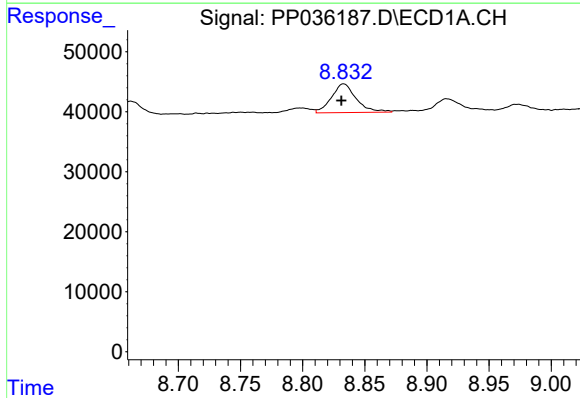


#33 AR-1260-3  
 R.T.: 8.603 min  
 Delta R.T.: 0.003 min  
 Response: 50878  
 Conc: 27.40 ng/ml

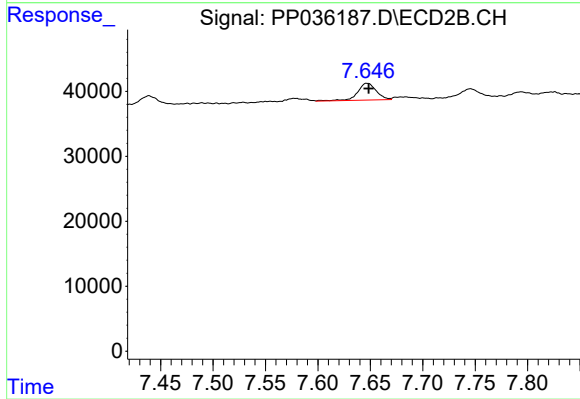
Instrument :  
 ECD\_P  
 ClientSampleId :



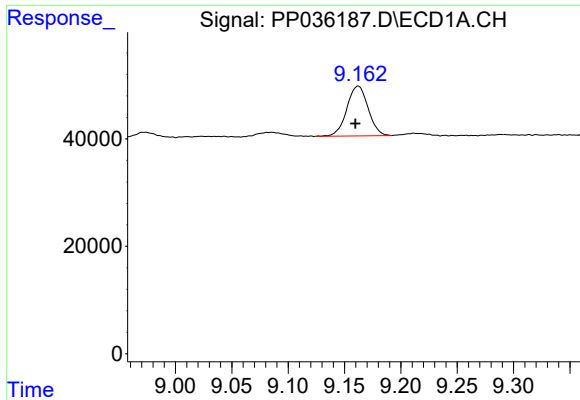
#33 AR-1260-3  
 R.T.: 7.162 min  
 Delta R.T.: -0.002 min  
 Response: 36936  
 Conc: 26.28 ng/ml



#34 AR-1260-4  
 R.T.: 8.833 min  
 Delta R.T.: 0.002 min  
 Response: 66292  
 Conc: 29.69 ng/ml



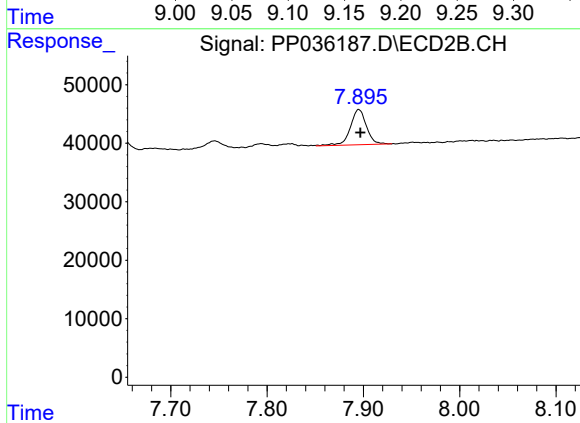
#34 AR-1260-4  
 R.T.: 7.647 min  
 Delta R.T.: -0.001 min  
 Response: 32550  
 Conc: 27.84 ng/ml



#35 AR-1260-5

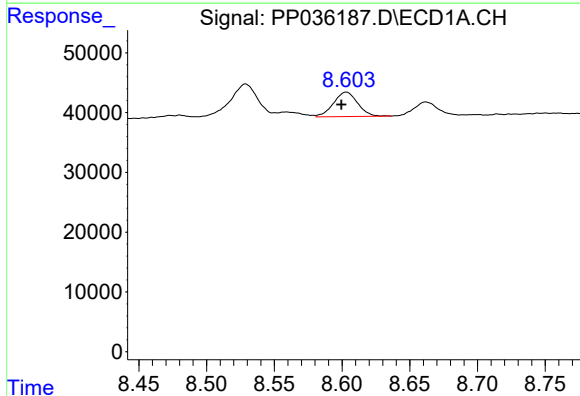
R.T.: 9.162 min  
 Delta R.T.: 0.003 min  
 Response: 122535  
 Conc: 28.70 ng/ml

Instrument :  
 ECD\_P  
 ClientSampled :



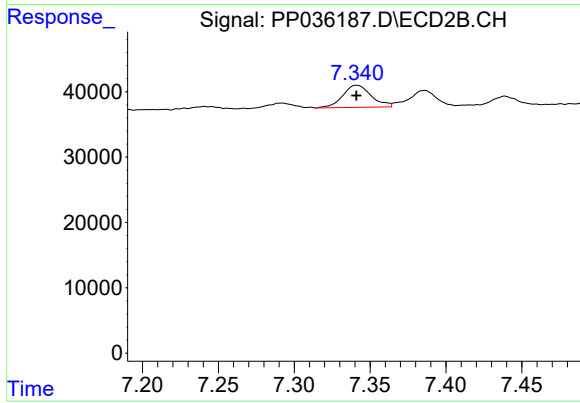
#35 AR-1260-5

R.T.: 7.895 min  
 Delta R.T.: -0.002 min  
 Response: 69859  
 Conc: 25.24 ng/ml



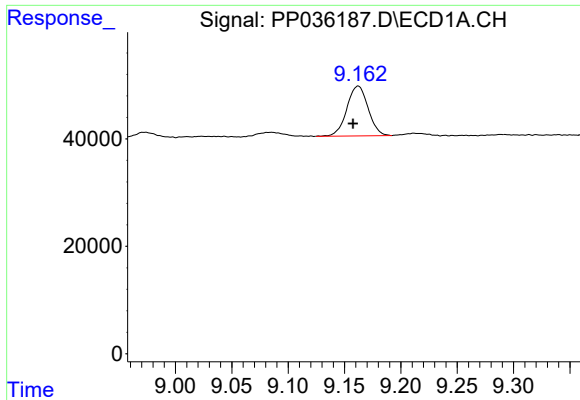
#36 AR-1262-1

R.T.: 8.603 min  
 Delta R.T.: 0.004 min  
 Response: 50878  
 Conc: 20.19 ng/ml



#36 AR-1262-1

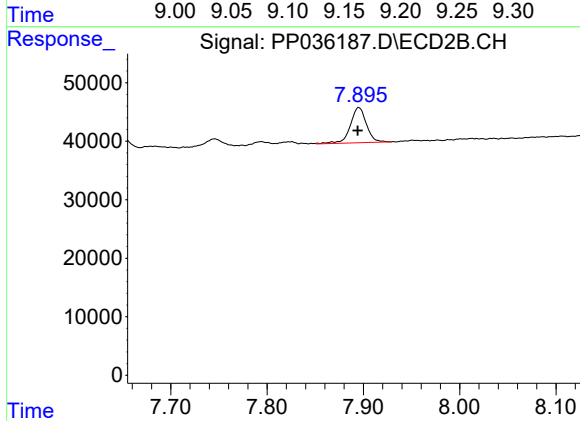
R.T.: 7.341 min  
 Delta R.T.: 0.000 min  
 Response: 44486  
 Conc: 49.21 ng/ml



#37 AR-1262-2

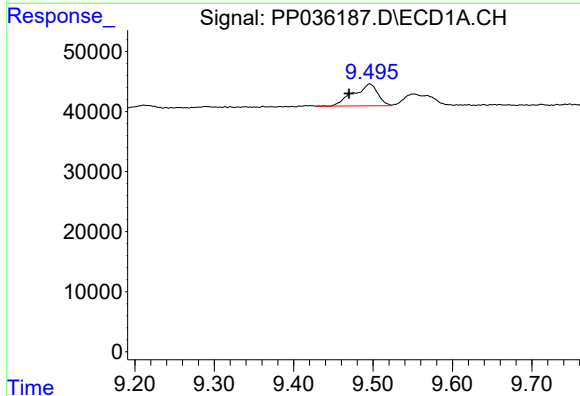
R.T.: 9.162 min  
 Delta R.T.: 0.004 min  
 Response: 122535  
 Conc: 27.19 ng/ml

Instrument :  
 ECD\_P  
 ClientSampleId :



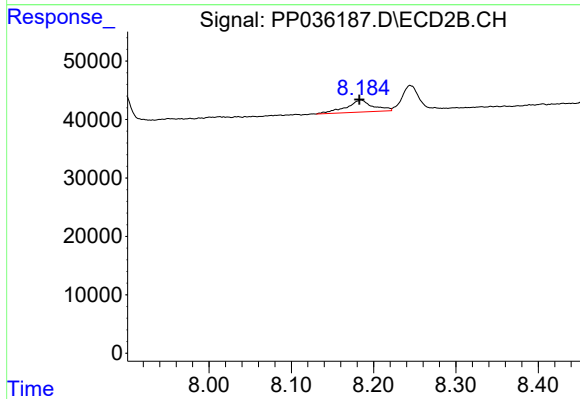
#37 AR-1262-2

R.T.: 7.895 min  
 Delta R.T.: 0.000 min  
 Response: 69859  
 Conc: 23.46 ng/ml



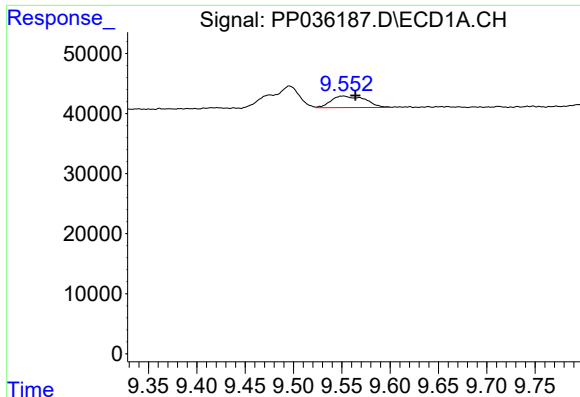
#38 AR-1262-3

R.T.: 9.496 min  
 Delta R.T.: 0.026 min  
 Response: 77429  
 Conc: 23.99 ng/ml



#38 AR-1262-3

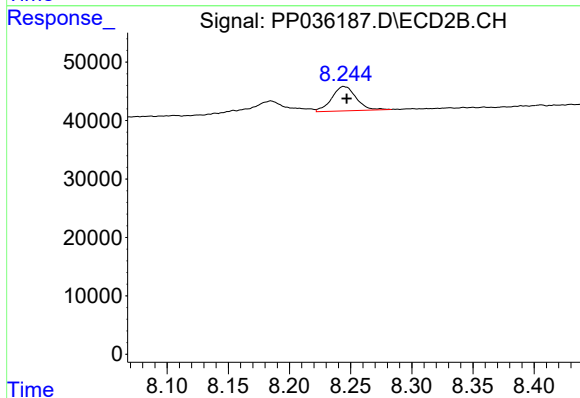
R.T.: 8.185 min  
 Delta R.T.: 0.002 min  
 Response: 46592  
 Conc: 39.21 ng/ml



#39 AR-1262-4

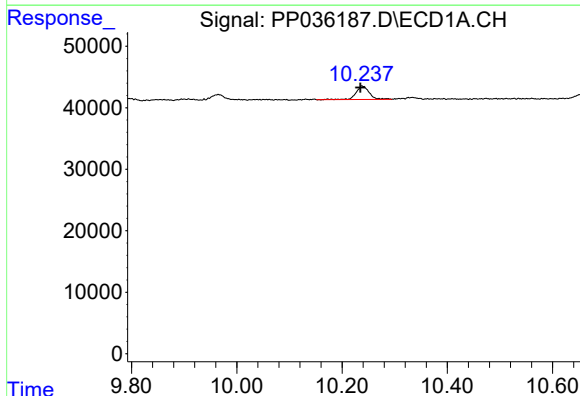
R.T.: 9.552 min  
 Delta R.T.: -0.012 min  
 Response: 46988  
 Conc: 17.52 ng/ml

Instrument :  
 ECD\_P  
 ClientSampleId :



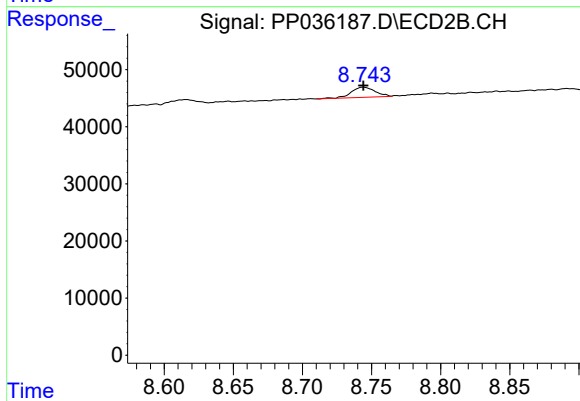
#39 AR-1262-4

R.T.: 8.245 min  
 Delta R.T.: -0.002 min  
 Response: 57827  
 Conc: 26.23 ng/ml



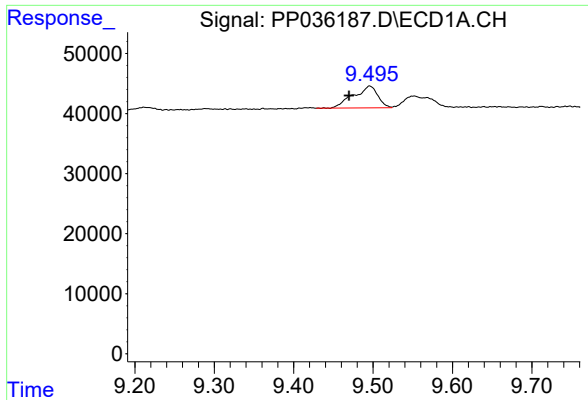
#40 AR-1262-5

R.T.: 10.238 min  
 Delta R.T.: 0.003 min  
 Response: 38290  
 Conc: 21.50 ng/ml



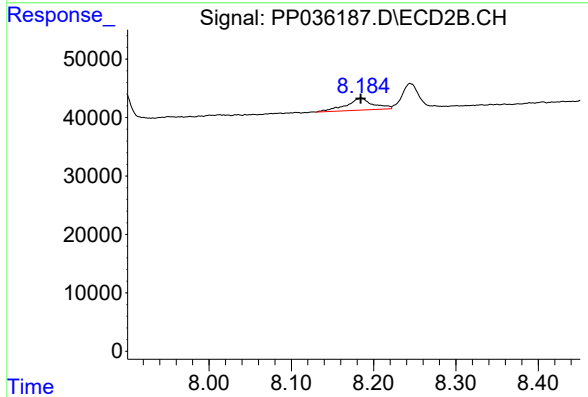
#40 AR-1262-5

R.T.: 8.744 min  
 Delta R.T.: 0.000 min  
 Response: 21142  
 Conc: 20.79 ng/ml

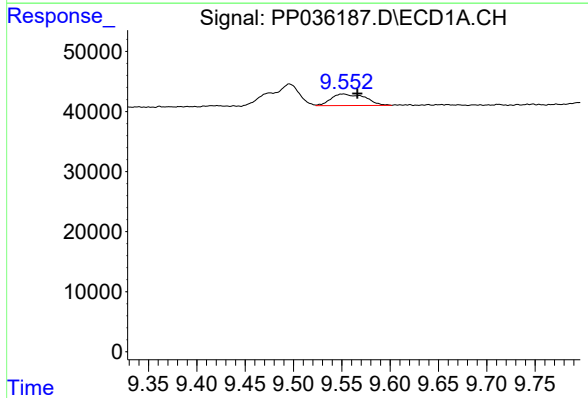


#41 AR-1268-1  
 R.T.: 9.496 min  
 Delta R.T.: 0.026 min  
 Response: 77429  
 Conc: 14.95 ng/ml

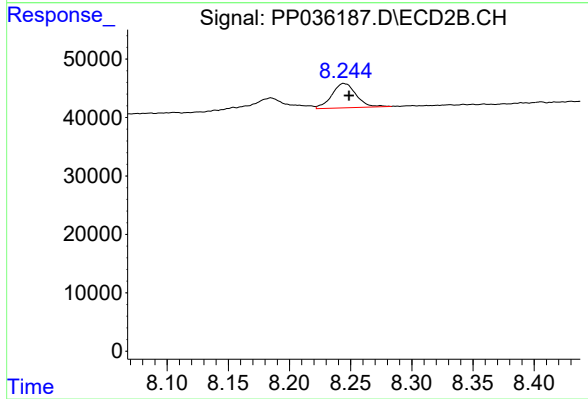
Instrument :  
 ECD\_P  
 ClientSampleId :



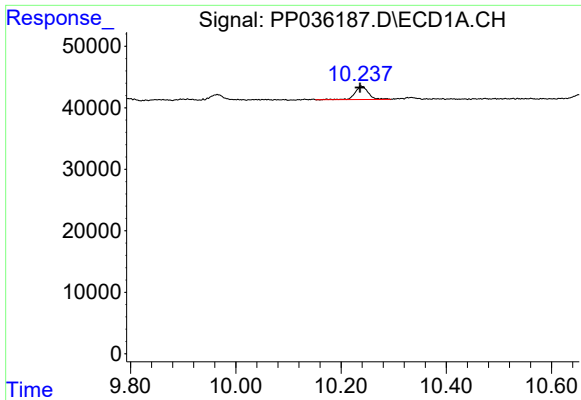
#41 AR-1268-1  
 R.T.: 8.185 min  
 Delta R.T.: 0.000 min  
 Response: 46592  
 Conc: 13.72 ng/ml



#42 AR-1268-2  
 R.T.: 9.552 min  
 Delta R.T.: -0.015 min  
 Response: 46988  
 Conc: 9.40 ng/ml



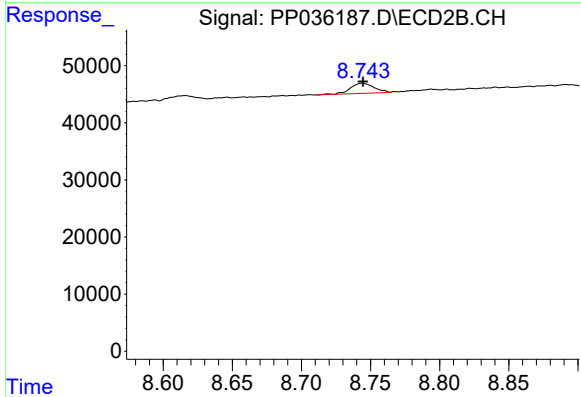
#42 AR-1268-2  
 R.T.: 8.245 min  
 Delta R.T.: -0.004 min  
 Response: 57827  
 Conc: 18.72 ng/ml



#44 AR-1268-4

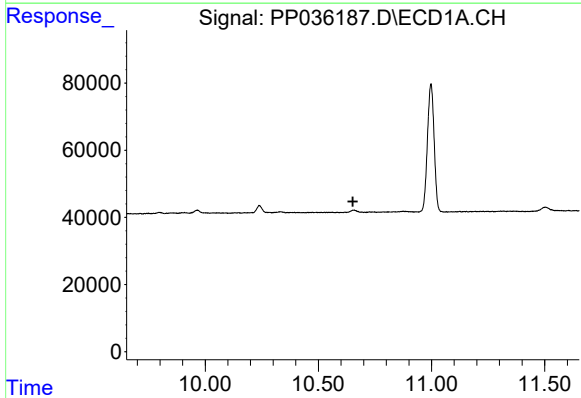
R.T.: 10.238 min  
 Delta R.T.: 0.002 min  
 Response: 38290  
 Conc: 19.62 ng/ml

Instrument :  
 ECD\_P  
 ClientSampleId :



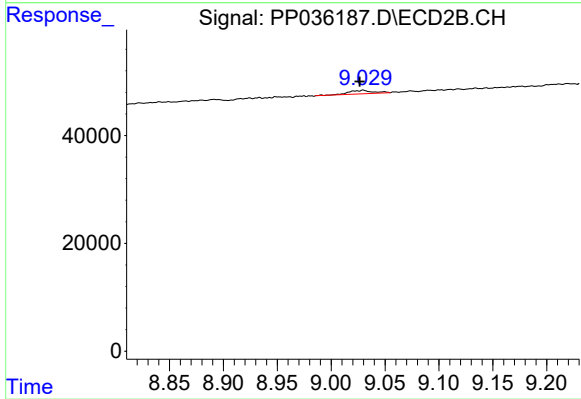
#44 AR-1268-4

R.T.: 8.744 min  
 Delta R.T.: 0.000 min  
 Response: 21142  
 Conc: 19.19 ng/ml



#45 AR-1268-5

R.T.: 0.000 min  
 Exp R.T. : 10.652 min  
 Response: 0  
 Conc: N.D.



#45 AR-1268-5

R.T.: 9.030 min  
 Delta R.T.: 0.003 min  
 Response: 9876  
 Conc: 1.16 ng/ml