

Data Path : Z:\pestpcbsrv\HPCHEM1\ECD_P\Data\PP052621\
 Data File : PP036193.D
 Signal(s) : Signal #1: ECD1A.CH Signal #2: ECD2B.CH
 Acq On : 27 May 2021 9:53
 Operator : DD\AJ
 Sample : M2262-09
 Misc : AR1262 MDL 25 PPB
 ALS Vial : 72 Sample Multiplier: 1

Instrument :
 ECD_P
 ClientSampleId :

Integration File signal 1: autoint1.e
 Integration File signal 2: autoint2.e
 Quant Time: May 27 10:00:46 2021
 Quant Method : Z:\pestpcbsrv\HPCHEM1\ECD_P\methods\PP052521.M
 Quant Title : GC EXTRACTABLES
 QLast Update : Wed May 26 00:48:29 2021
 Response via : Initial Calibration
 Integrator: ChemStation 6890 Scale Mode: Small noise peaks clipped

Volume Inj. : 2 µl
 Signal #1 Phase : ZB-MR2 Signal #2 Phase: ZB-MR2
 Signal #1 Info : 30Mx0.32mmx 0.50µ Signal #2 Info : 30M x 0.32mm x 0.25µm

Compound	RT#1	RT#2	Resp#1	Resp#2	ng/ml	ng/ml

System Monitoring Compounds						
1) SA Tetrachlo...	4.966	3.963	858969	536008	19.299	19.205
2) SA Decachlor...	10.994	9.270	909611	492856	21.284	21.483
Target Compounds						
9) L2 AR-1221-2	5.317	0.000	12135	0	29.114	N.D. #
24) L5 AR-1248-4	7.198f	0.000	21360	0	13.412	N.D. #
26) L6 AR-1254-1	7.198	0.000	21360	0	13.184	N.D. #
27) L6 AR-1254-2	7.421	0.000	11060	0	4.490	N.D. #
28) L6 AR-1254-3	7.823f	6.691f	15697	18224	5.950	9.572 #
30) L6 AR-1254-5	8.527	7.340	53342	25419	23.508	14.899 #
31) L7 AR-1260-1	7.970	6.809	54331	27367	26.821	21.934
32) L7 AR-1260-2	8.236	7.007	64171	31802	26.268	21.103
33) L7 AR-1260-3	8.601	7.164	79633	31944	42.881	22.729 #
34) L7 AR-1260-4	8.833	7.646	80445	41153	36.025	35.200
35) L7 AR-1260-5	9.159	7.894	142333	79790	33.335	28.824
36) L8 AR-1262-1	8.601	7.340	79633	25419	31.593	28.117
37) L8 AR-1262-2	9.159	7.894	142333	79790	31.584	26.800
38) L8 AR-1262-3	9.470	8.182	66798	70957	20.700	59.715 #
39) L8 AR-1262-4	9.565	8.245	43437	70800	16.196	32.115 #
40) L8 AR-1262-5	10.237	8.742	52790	30583	29.638	30.069
41) L9 AR-1268-1	9.470	8.182	66798	70957	12.900	20.892 #
42) L9 AR-1268-2	9.565	8.245	43437	70800	8.691	22.925 #
44) L9 AR-1268-4	10.237	8.742	52790	30583	27.054	27.755
45) L9 AR-1268-5	10.656	9.027	24336	13053	1.801	1.529

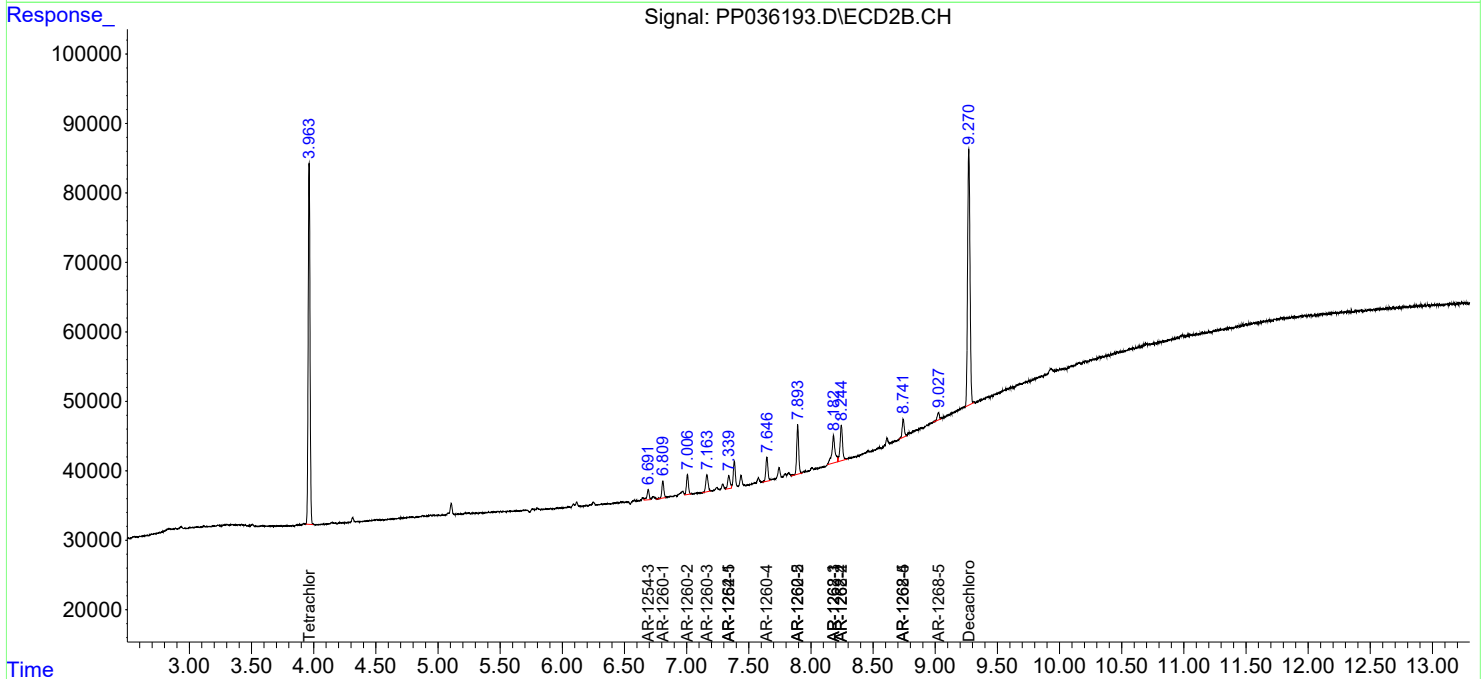
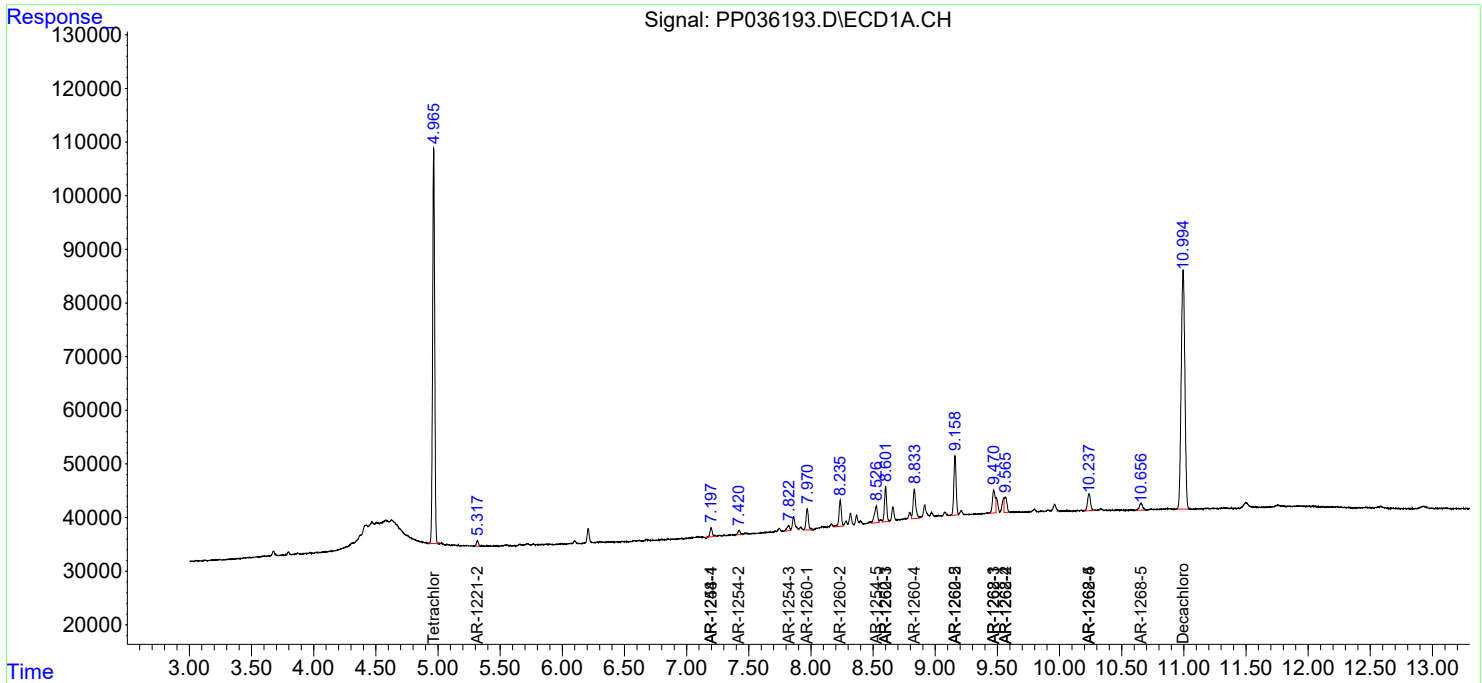
(f)=RT Delta > 1/2 Window (#)=Amounts differ by > 25% (m)=manual int.

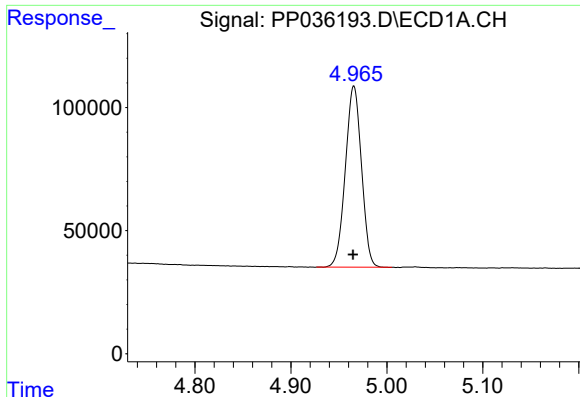
Data Path : Z:\pestpcbsrv\HPCHEM1\ECD_P\Data\PP052621\
 Data File : PP036193.D
 Signal(s) : Signal #1: ECD1A.CH Signal #2: ECD2B.CH
 Acq On : 27 May 2021 9:53
 Operator : DD\AJ
 Sample : M2262-09
 Misc : AR1262 MDL 25 PPB
 ALS Vial : 72 Sample Multiplier: 1

Instrument :
 ECD_P
 ClientSampled :

Integration File signal 1: autoint1.e
 Integration File signal 2: autoint2.e
 Quant Time: May 27 10:00:46 2021
 Quant Method : Z:\pestpcbsrv\HPCHEM1\ECD_P\methods\PP052521.M
 Quant Title : GC EXTRACTABLES
 QLast Update : Wed May 26 00:48:29 2021
 Response via : Initial Calibration
 Integrator: ChemStation 6890 Scale Mode: Small noise peaks clipped

Volume Inj. : 2 µl
 Signal #1 Phase : ZB-MR1 Signal #2 Phase: ZB-MR2
 Signal #1 Info : 30Mx0.32mmx 0.50µ Signal #2 Info : 30M x 0.32mm x 0.25µm

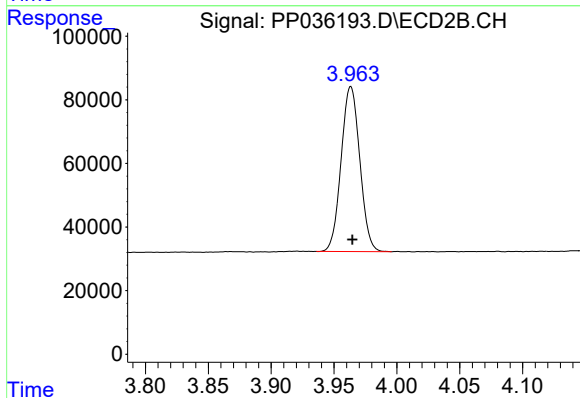




#1 Tetrachloro-m-xylene

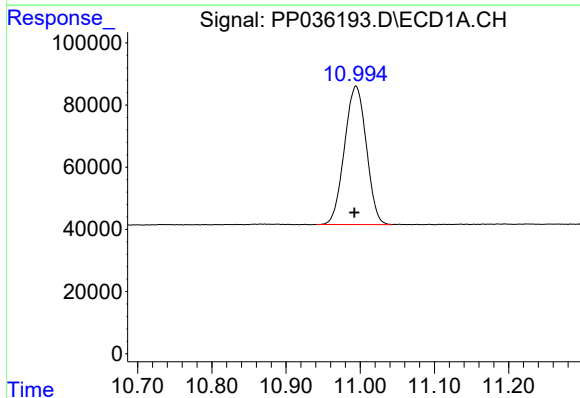
R.T.: 4.966 min
 Delta R.T.: 0.000 min
 Response: 858969
 Conc: 19.30 ng/ml

Instrument :
 ECD_P
 ClientSampled :



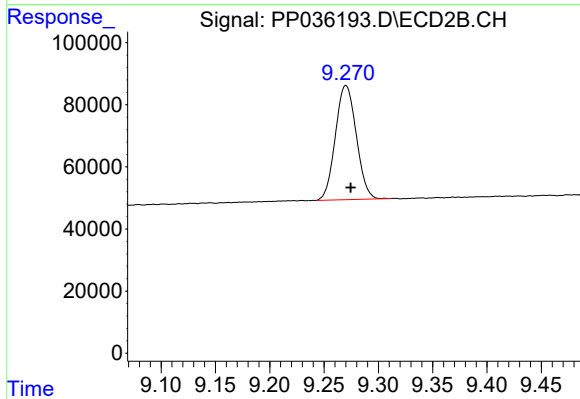
#1 Tetrachloro-m-xylene

R.T.: 3.963 min
 Delta R.T.: -0.001 min
 Response: 536008
 Conc: 19.21 ng/ml



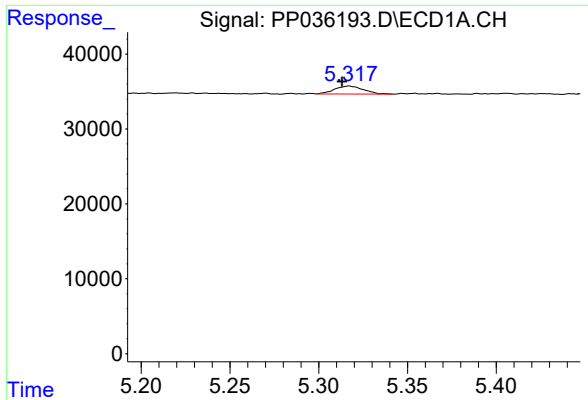
#2 Decachlorobiphenyl

R.T.: 10.994 min
 Delta R.T.: 0.002 min
 Response: 909611
 Conc: 21.28 ng/ml



#2 Decachlorobiphenyl

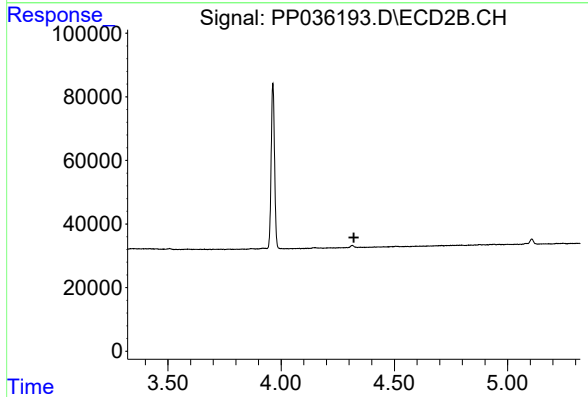
R.T.: 9.270 min
 Delta R.T.: -0.004 min
 Response: 492856
 Conc: 21.48 ng/ml



#9 AR-1221-2

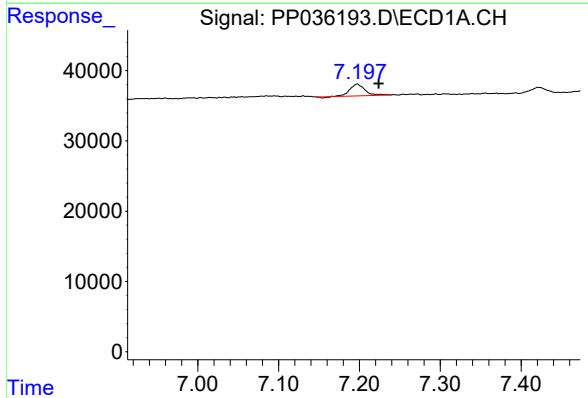
R.T.: 5.317 min
 Delta R.T.: 0.004 min
 Response: 12135
 Conc: 29.11 ng/ml

Instrument :
 ECD_P
 ClientSampleId :



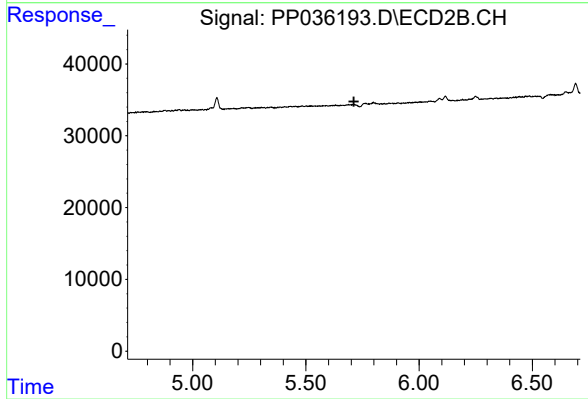
#9 AR-1221-2

R.T.: 0.000 min
 Exp R.T. : 4.322 min
 Response: 0
 Conc: N.D.



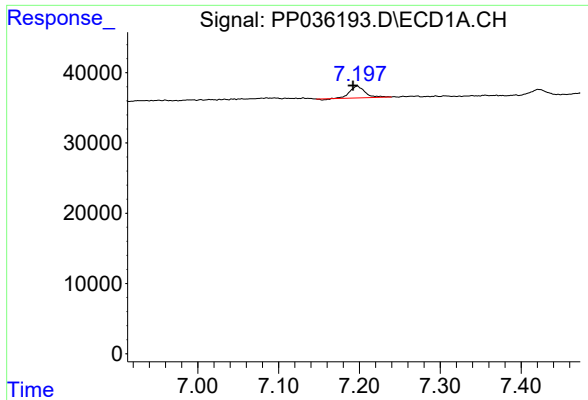
#24 AR-1248-4

R.T.: 7.198 min
 Delta R.T.: -0.026 min
 Response: 21360
 Conc: 13.41 ng/ml



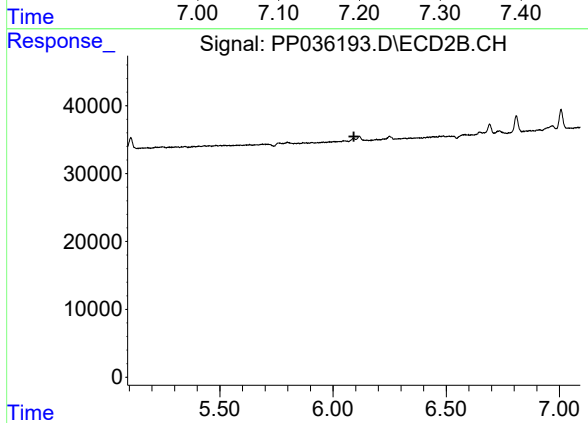
#24 AR-1248-4

R.T.: 0.000 min
 Exp R.T. : 5.712 min
 Response: 0
 Conc: N.D.

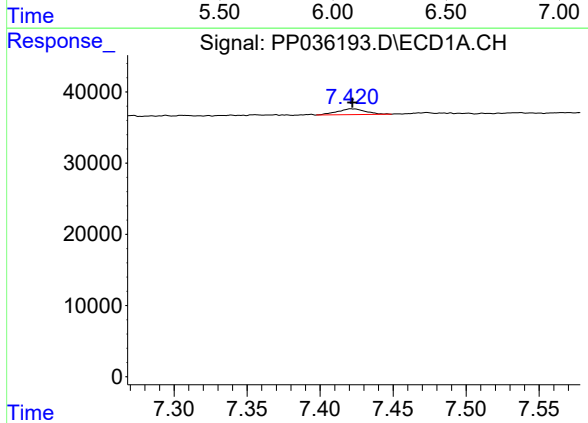


#26 AR-1254-1
 R.T.: 7.198 min
 Delta R.T.: 0.006 min
 Response: 21360
 Conc: 13.18 ng/ml

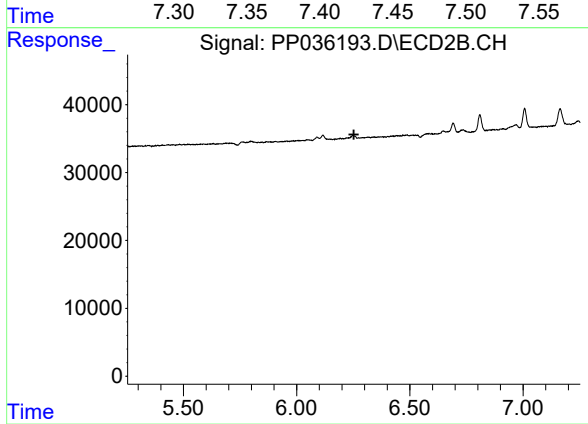
Instrument :
 ECD_P
 ClientSampleId :



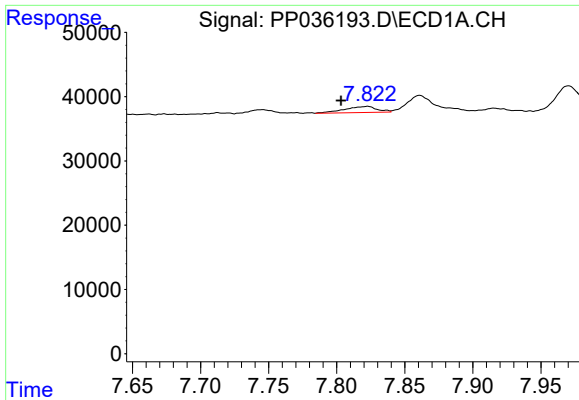
#26 AR-1254-1
 R.T.: 0.000 min
 Exp R.T. : 6.092 min
 Response: 0
 Conc: N.D.



#27 AR-1254-2
 R.T.: 7.421 min
 Delta R.T.: -0.001 min
 Response: 11060
 Conc: 4.49 ng/ml

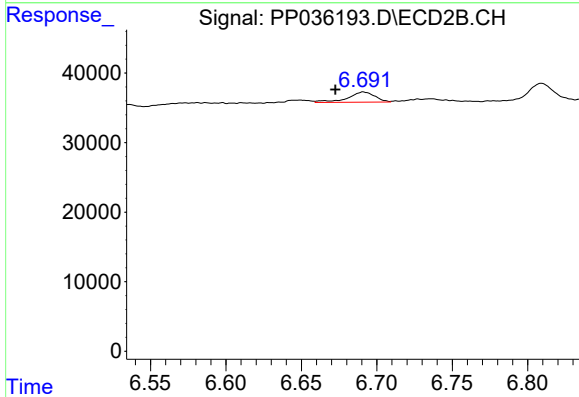


#27 AR-1254-2
 R.T.: 0.000 min
 Exp R.T. : 6.253 min
 Response: 0
 Conc: N.D.

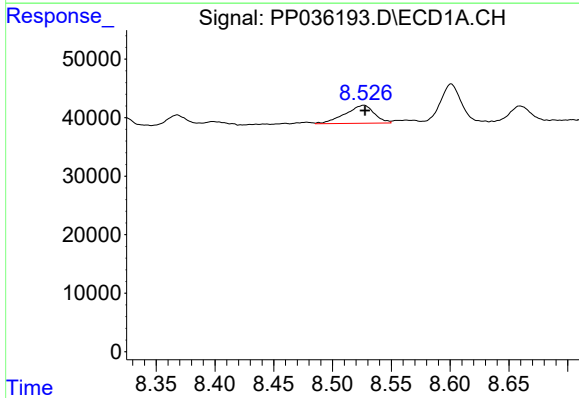


#28 AR-1254-3
 R.T.: 7.823 min
 Delta R.T.: 0.020 min
 Response: 15697
 Conc: 5.95 ng/ml

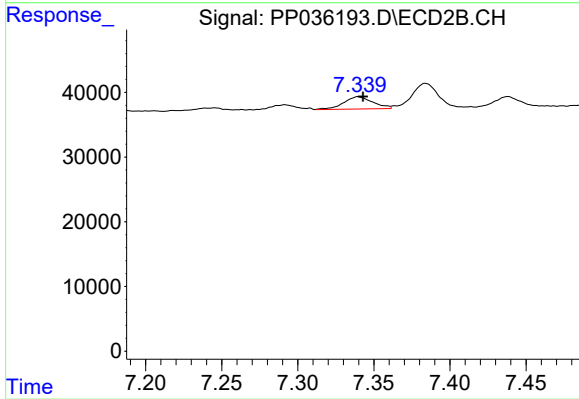
Instrument :
 ECD_P
 ClientSampleId :



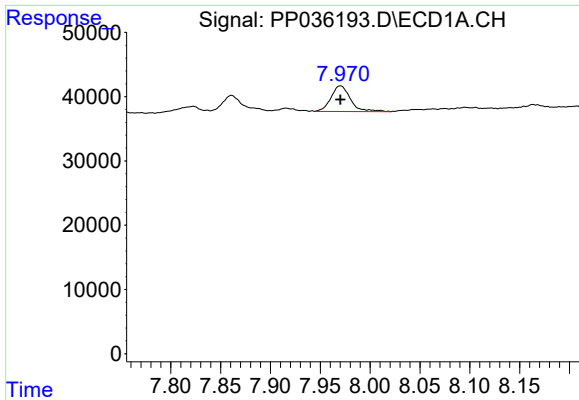
#28 AR-1254-3
 R.T.: 6.691 min
 Delta R.T.: 0.018 min
 Response: 18224
 Conc: 9.57 ng/ml



#30 AR-1254-5
 R.T.: 8.527 min
 Delta R.T.: 0.000 min
 Response: 53342
 Conc: 23.51 ng/ml

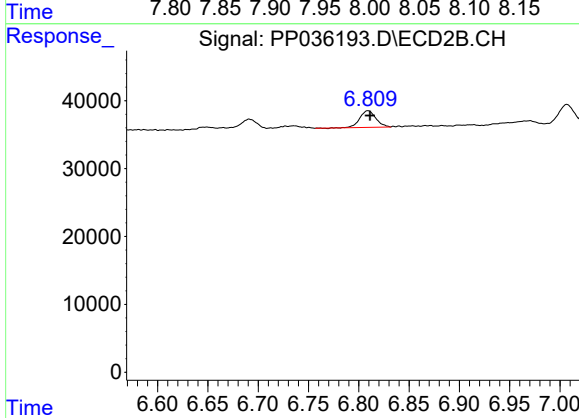


#30 AR-1254-5
 R.T.: 7.340 min
 Delta R.T.: -0.003 min
 Response: 25419
 Conc: 14.90 ng/ml

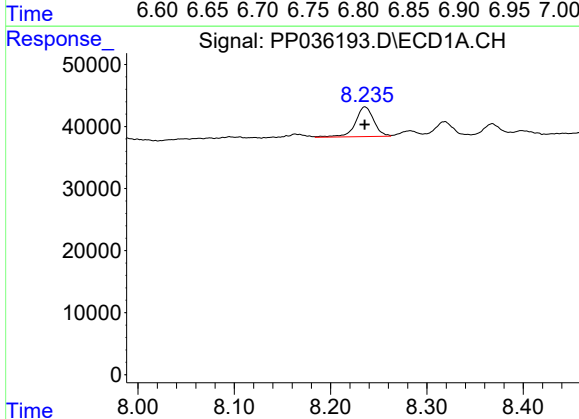


#31 AR-1260-1
 R.T.: 7.970 min
 Delta R.T.: 0.000 min
 Response: 54331
 Conc: 26.82 ng/ml

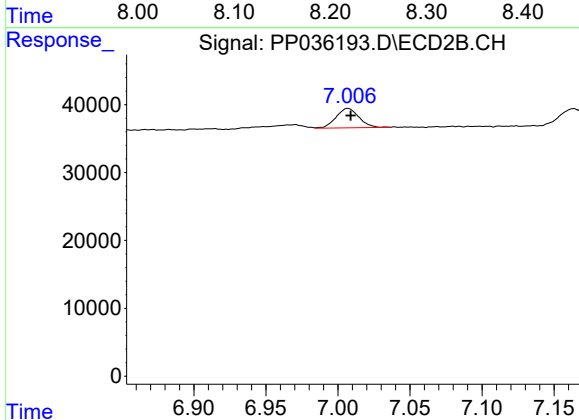
Instrument :
 ECD_P
 ClientSampled :



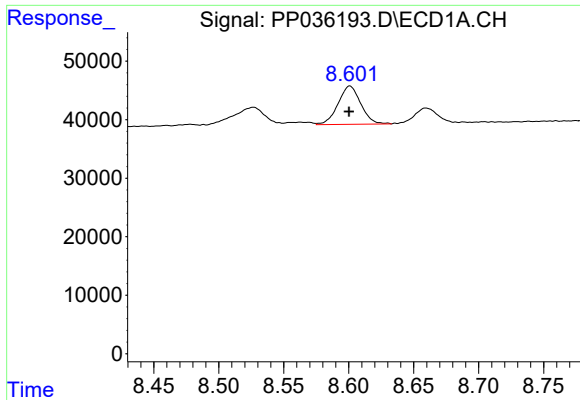
#31 AR-1260-1
 R.T.: 6.809 min
 Delta R.T.: -0.002 min
 Response: 27367
 Conc: 21.93 ng/ml



#32 AR-1260-2
 R.T.: 8.236 min
 Delta R.T.: 0.000 min
 Response: 64171
 Conc: 26.27 ng/ml

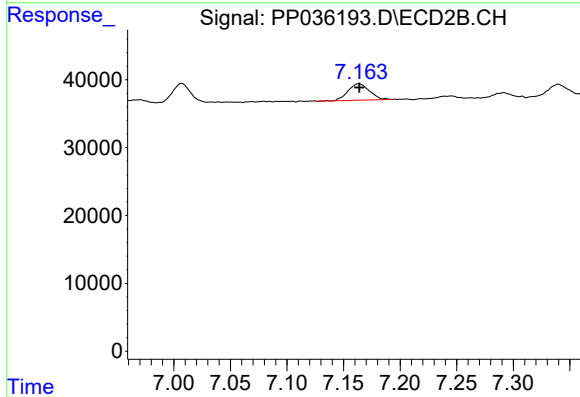


#32 AR-1260-2
 R.T.: 7.007 min
 Delta R.T.: -0.002 min
 Response: 31802
 Conc: 21.10 ng/ml

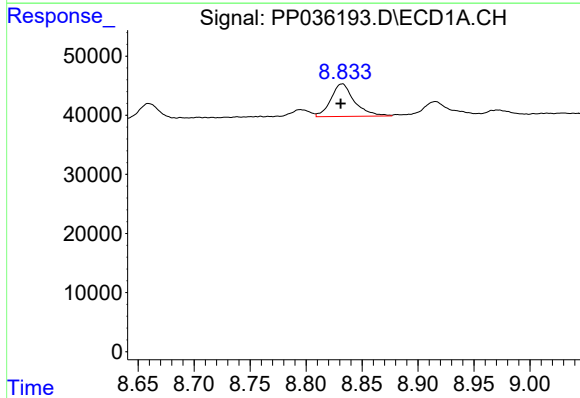


#33 AR-1260-3
 R.T.: 8.601 min
 Delta R.T.: 0.000 min
 Response: 79633
 Conc: 42.88 ng/ml

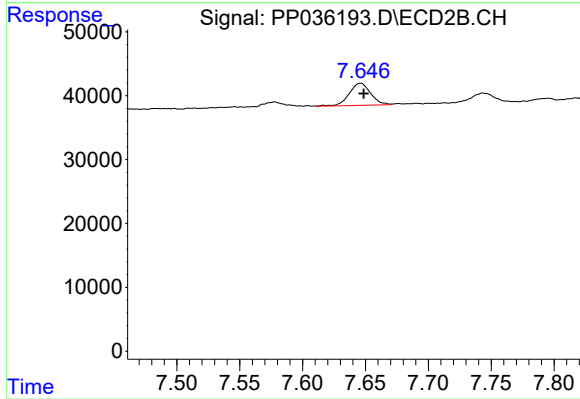
Instrument :
 ECD_P
 ClientSampleId :



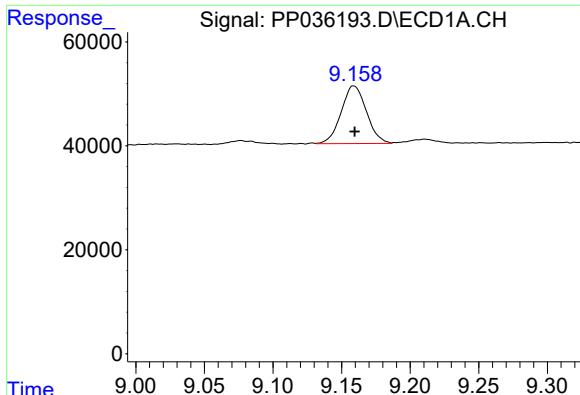
#33 AR-1260-3
 R.T.: 7.164 min
 Delta R.T.: 0.000 min
 Response: 31944
 Conc: 22.73 ng/ml



#34 AR-1260-4
 R.T.: 8.833 min
 Delta R.T.: 0.002 min
 Response: 80445
 Conc: 36.02 ng/ml

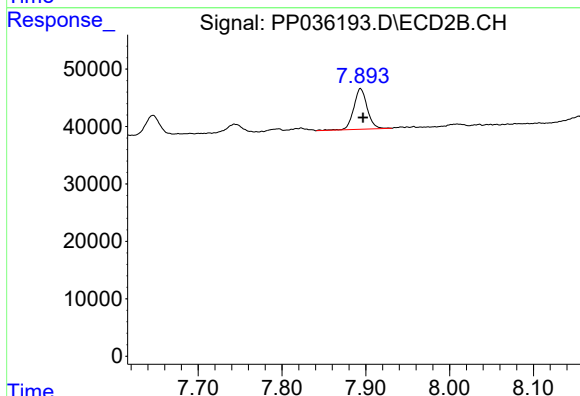


#34 AR-1260-4
 R.T.: 7.646 min
 Delta R.T.: -0.002 min
 Response: 41153
 Conc: 35.20 ng/ml

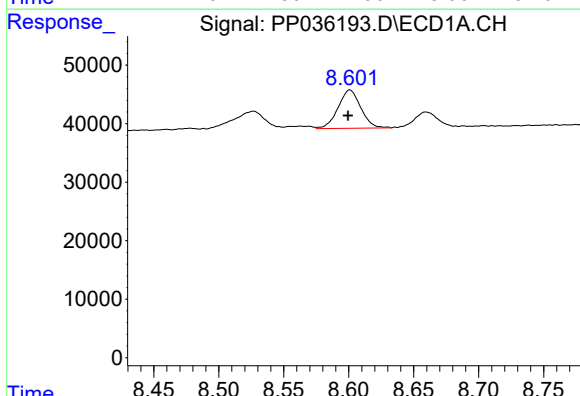


#35 AR-1260-5
 R.T.: 9.159 min
 Delta R.T.: 0.000 min
 Response: 142333
 Conc: 33.34 ng/ml

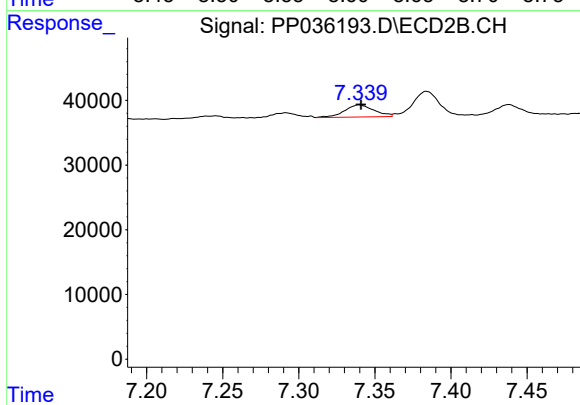
Instrument :
 ECD_P
 ClientSampleId :



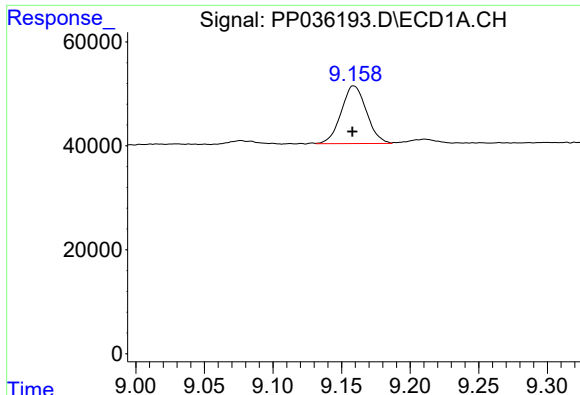
#35 AR-1260-5
 R.T.: 7.894 min
 Delta R.T.: -0.003 min
 Response: 79790
 Conc: 28.82 ng/ml



#36 AR-1262-1
 R.T.: 8.601 min
 Delta R.T.: 0.002 min
 Response: 79633
 Conc: 31.59 ng/ml



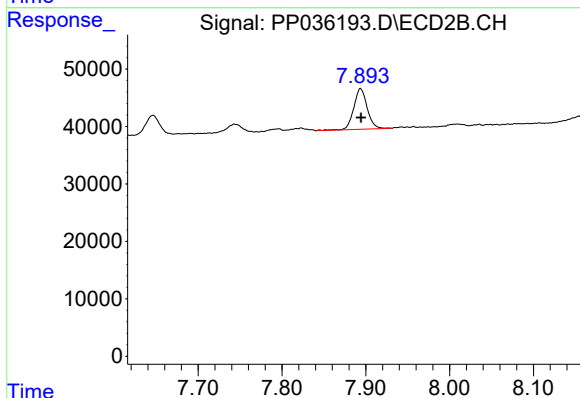
#36 AR-1262-1
 R.T.: 7.340 min
 Delta R.T.: -0.001 min
 Response: 25419
 Conc: 28.12 ng/ml



#37 AR-1262-2

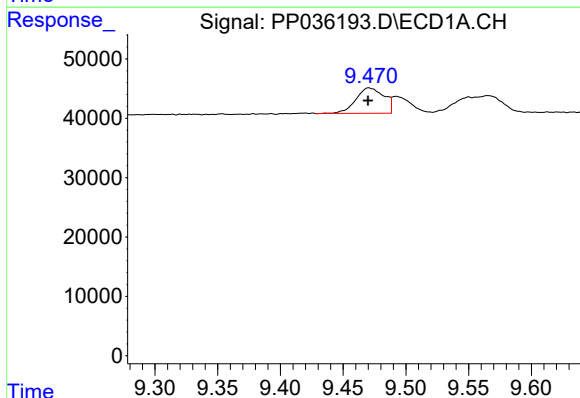
R.T.: 9.159 min
 Delta R.T.: 0.000 min
 Response: 142333
 Conc: 31.58 ng/ml

Instrument :
 ECD_P
 ClientSampleId :



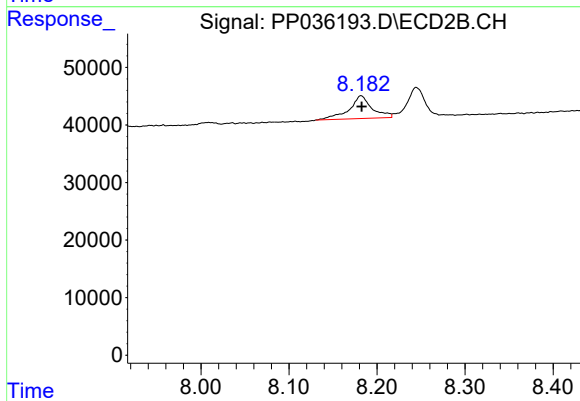
#37 AR-1262-2

R.T.: 7.894 min
 Delta R.T.: 0.000 min
 Response: 79790
 Conc: 26.80 ng/ml



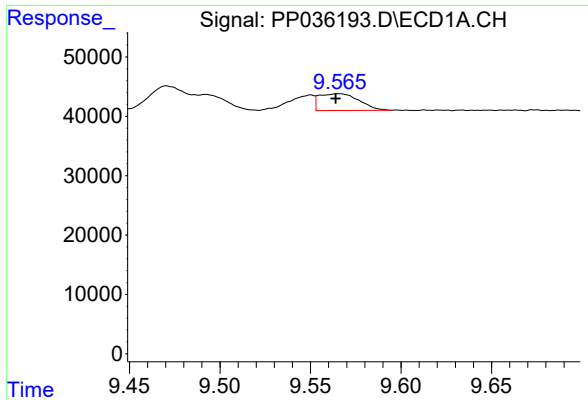
#38 AR-1262-3

R.T.: 9.470 min
 Delta R.T.: 0.000 min
 Response: 66798
 Conc: 20.70 ng/ml



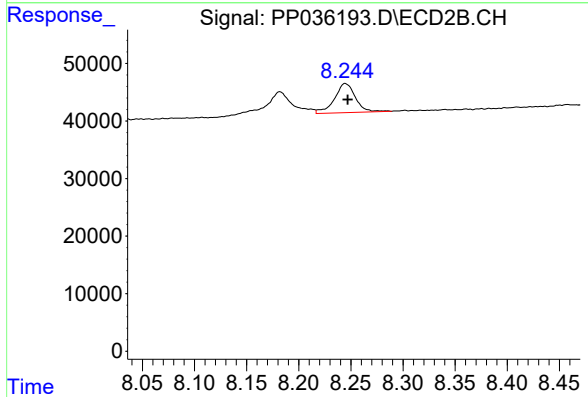
#38 AR-1262-3

R.T.: 8.182 min
 Delta R.T.: 0.000 min
 Response: 70957
 Conc: 59.72 ng/ml

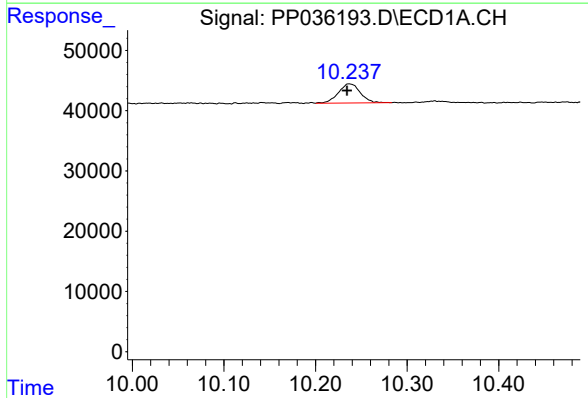


#39 AR-1262-4
 R.T.: 9.565 min
 Delta R.T.: 0.001 min
 Response: 43437
 Conc: 16.20 ng/ml

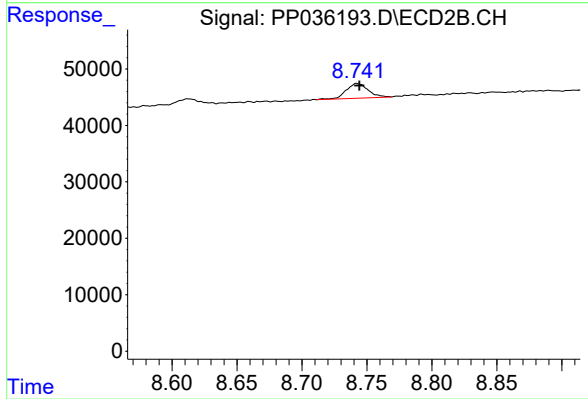
Instrument :
 ECD_P
 ClientSampled :



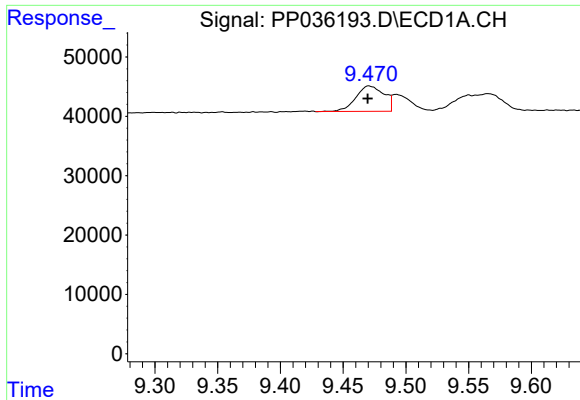
#39 AR-1262-4
 R.T.: 8.245 min
 Delta R.T.: -0.002 min
 Response: 70800
 Conc: 32.12 ng/ml



#40 AR-1262-5
 R.T.: 10.237 min
 Delta R.T.: 0.002 min
 Response: 52790
 Conc: 29.64 ng/ml

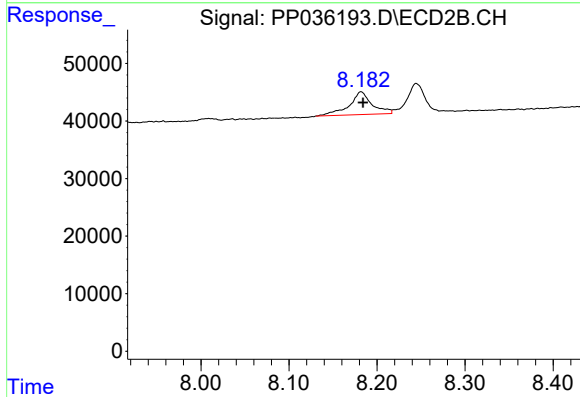


#40 AR-1262-5
 R.T.: 8.742 min
 Delta R.T.: -0.002 min
 Response: 30583
 Conc: 30.07 ng/ml

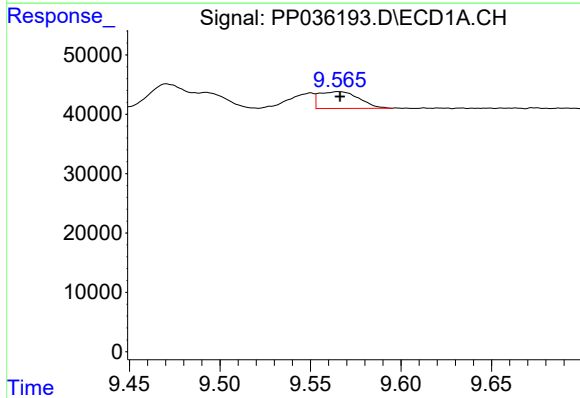


#41 AR-1268-1
 R.T.: 9.470 min
 Delta R.T.: 0.000 min
 Response: 66798
 Conc: 12.90 ng/ml

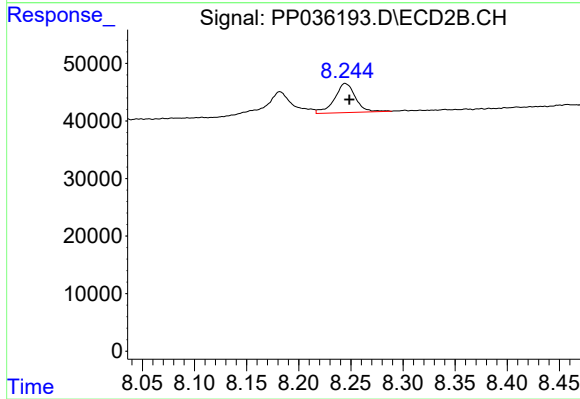
Instrument :
 ECD_P
 ClientSampled :



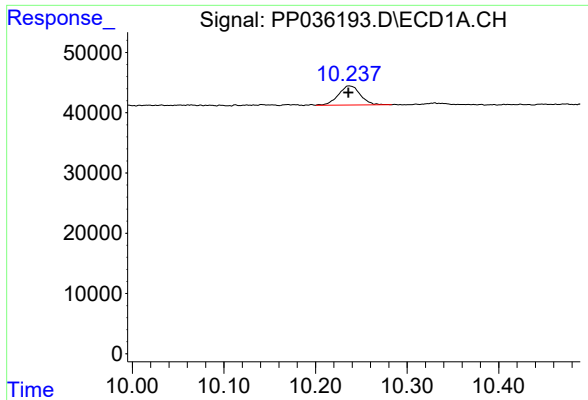
#41 AR-1268-1
 R.T.: 8.182 min
 Delta R.T.: -0.002 min
 Response: 70957
 Conc: 20.89 ng/ml



#42 AR-1268-2
 R.T.: 9.565 min
 Delta R.T.: -0.001 min
 Response: 43437
 Conc: 8.69 ng/ml

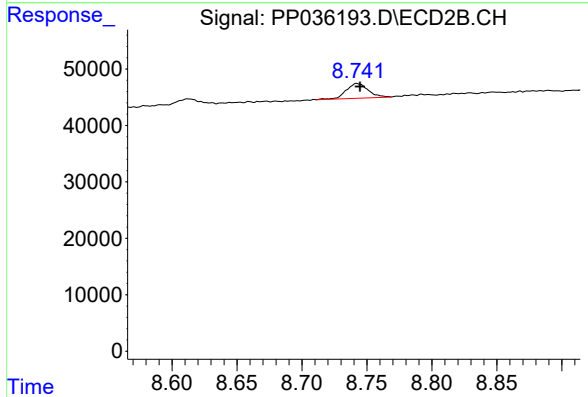


#42 AR-1268-2
 R.T.: 8.245 min
 Delta R.T.: -0.004 min
 Response: 70800
 Conc: 22.92 ng/ml

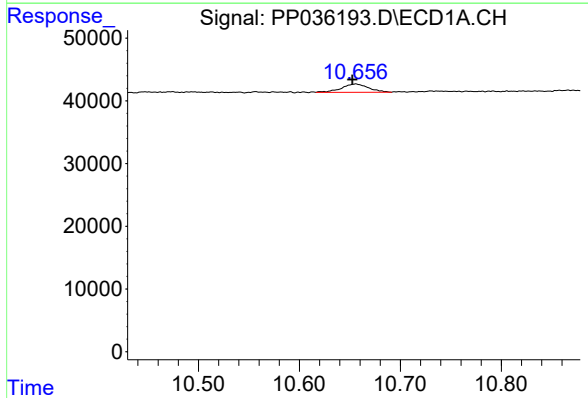


#44 AR-1268-4
 R.T.: 10.237 min
 Delta R.T.: 0.001 min
 Response: 52790
 Conc: 27.05 ng/ml

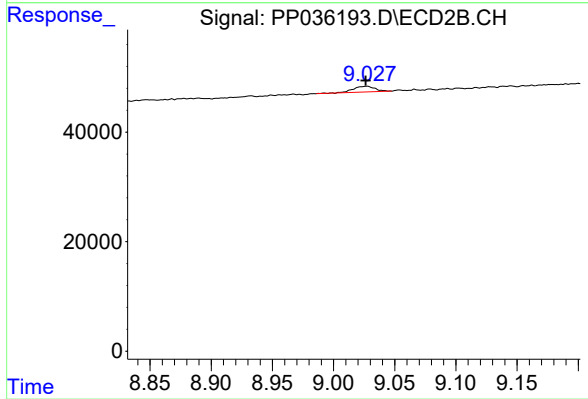
Instrument :
 ECD_P
 ClientSampleId :



#44 AR-1268-4
 R.T.: 8.742 min
 Delta R.T.: -0.002 min
 Response: 30583
 Conc: 27.76 ng/ml



#45 AR-1268-5
 R.T.: 10.656 min
 Delta R.T.: 0.004 min
 Response: 24336
 Conc: 1.80 ng/ml



#45 AR-1268-5
 R.T.: 9.027 min
 Delta R.T.: 0.000 min
 Response: 13053
 Conc: 1.53 ng/ml