

Data Path : Z:\pestpcbsrv\HPCHEM1\ECD_P\Data\PP052722\
 Data File : PP048120.D
 Signal(s) : Signal #1: ECD1A.ch Signal #2: ECD2B.ch
 Acq On : 27 May 2022 23:10
 Operator : YP\AJ
 Sample : N2927-01MSD
 Misc :
 ALS Vial : 17 Sample Multiplier: 1

Instrument :
 ECD_P
 ClientSampleId :

Integration File signal 1: autoint1.e
 Integration File signal 2: autoint2.e
 Quant Time: May 28 00:36:32 2022
 Quant Method : Z:\pestpcbsrv\HPCHEM1\ECD_P\methods\PP052722.M
 Quant Title : GC EXTRACTABLES
 QLast Update : Fri May 27 23:53:39 2022
 Response via : Initial Calibration
 Integrator: ChemStation

Volume Inj. : 2 µl
 Signal #1 Phase : ZB-MR1 Signal #2 Phase: ZB-MR2
 Signal #1 Info : 30Mx0.32mmx 0.50µ Signal #2 Info : 30M x 0.32mm x 0.25µm

Compound	RT#1	RT#2	Resp#1	Resp#2	ng/ml	ng/ml
System Monitoring Compounds						
1) SA Tetrachlo...	4.037	3.221	49116487	40506931	20.974	20.554
2) SA Decachlor...	10.392	8.664	33373750	28065680	17.171	17.362
Target Compounds						
3) L1 AR-1016-1	5.326	4.385	45884158	37401937	544.112	556.102
4) L1 AR-1016-2	5.350	4.404	65623219	51865592	554.642	556.912
5) L1 AR-1016-3	5.417	4.592	39565036	27028154	585.491	527.611
6) L1 AR-1016-4	5.526	4.640	32721852	21002318	530.848	551.230
7) L1 AR-1016-5	5.850	4.867	31607087	26243480	561.114	549.653
8) L2 AR-1221-1	4.274	3.454	9319486	3639795	352.526	175.604 #
9) L2 AR-1221-2	4.368	3.545	5415170	4970857	264.399	323.631
10) L2 AR-1221-3	4.452	3.625	23322640	19919721	372.521	401.651
11) L3 AR-1232-1	4.452	3.625	23322640	19919721	449.023	461.199
12) L3 AR-1232-2	5.029	4.404	33264508	51865592	1385.565	1287.289
13) L3 AR-1232-3	5.350	4.592	65623219	27028154	1322.458	1310.082
14) L3 AR-1232-4	5.526	4.684	32721852	25888607	1368.835	1491.768
15) L3 AR-1232-5	5.626	4.867	25753413	26243480	1576.354	1339.793
16) L4 AR-1242-1	5.326	4.385	45884158	37401937	820.509	784.321
17) L4 AR-1242-2	5.350	4.404	65623219	51865592	797.905	780.568
18) L4 AR-1242-3	5.417	4.592	39565036	27028154	805.980	779.189
19) L4 AR-1242-4	5.526	4.684	32721852	25888607	826.882	806.028
20) L4 AR-1242-5	6.341	5.249	4878203	22185857	114.541	531.243 #
21) L5 AR-1248-1	5.326	4.385	45884158	37401937	1063.747	1021.908
22) L5 AR-1248-2	5.626	4.640	25753413	21002318	450.323	441.008
23) L5 AR-1248-3	5.850	4.684	31607087	25888607	466.976	522.573
24) L5 AR-1248-4	6.299	4.867	5196612	26243480	66.821	450.461 #
25) L5 AR-1248-5	6.341	5.293	4878203	3206489	64.131	53.161
26) L6 AR-1254-1	6.266	5.249	24399459	22185857	336.099	253.077
27) L6 AR-1254-2	6.509	5.410	28767982	21965412	241.773	292.342
28) L6 AR-1254-3	6.917	5.865f	16685484	42667259	140.457	347.750 #
29) L6 AR-1254-4	7.234	6.097	11705362	5363045	129.772	71.424 #
30) L6 AR-1254-5	7.700	6.552	160.3E6	138.2E6	1730.221	1365.283
31) L7 AR-1260-1	7.096	5.990	69094396	61701861	740.273	720.787
32) L7 AR-1260-2	7.384	6.196	115.2E6	105.7E6	1030.987	1025.427
33) L7 AR-1260-3	7.781	6.362	100.0E6	74262350	1167.889	749.954 #
34) L7 AR-1260-4	8.033	6.879	94707353	70782255	912.781	850.231
35) L7 AR-1260-5	8.396	7.145	201.5E6	197.5E6	976.696	995.565
36) L8 AR-1262-1	7.781	6.597	100.0E6	99194604	877.141	918.108
37) L8 AR-1262-2	8.396	6.879	201.5E6	70782255	945.574	715.231
38) L8 AR-1262-3	8.764f	7.457	152.3E6	45673501	1633.788	606.919 #
39) L8 AR-1262-4	8.842	7.525	33274151	161.4E6	559.620	1108.380 #
40) L8 AR-1262-5	9.572	8.069	62806264	56665688	793.534	839.579
41) L9 AR-1268-1	8.764f	7.457	152.3E6	45673501	575.572	195.565 #

Data Path : Z:\pestpcbsrv\HPCHEM1\ECD_P\Data\PP052722\
 Data File : PP048120.D
 Signal(s) : Signal #1: ECD1A.ch Signal #2: ECD2B.ch
 Acq On : 27 May 2022 23:10
 Operator : YP\AJ
 Sample : N2927-01MSD
 Misc :
 ALS Vial : 17 Sample Multiplier: 1

Instrument :
 ECD_P
 ClientSampleId :

Integration File signal 1: autoint1.e
 Integration File signal 2: autoint2.e
 Quant Time: May 28 00:36:32 2022
 Quant Method : Z:\pestpcbsrv\HPCHEM1\ECD_P\methods\PP052722.M
 Quant Title : GC EXTRACTABLES
 QLast Update : Fri May 27 23:53:39 2022
 Response via : Initial Calibration
 Integrator: ChemStation

Volume Inj. : 2 µl
 Signal #1 Phase : ZB-MR1 Signal #2 Phase: ZB-MR2
 Signal #1 Info : 30Mx0.32mmx 0.50µ Signal #2 Info : 30M x 0.32mm x 0.25µm

	Compound	RT#1	RT#2	Resp#1	Resp#2	ng/ml	ng/ml
42)	L9 AR-1268-2	8.842	7.525	33274151	161.4E6	137.784	746.108 #
43)	L9 AR-1268-3	9.093	7.755	4267613	2504279	20.758	13.473 #
44)	L9 AR-1268-4	9.572	8.069	62806264	56665688	699.172	689.781
45)	L9 AR-1268-5	10.026	8.387	17834639	14064641	25.260	23.211

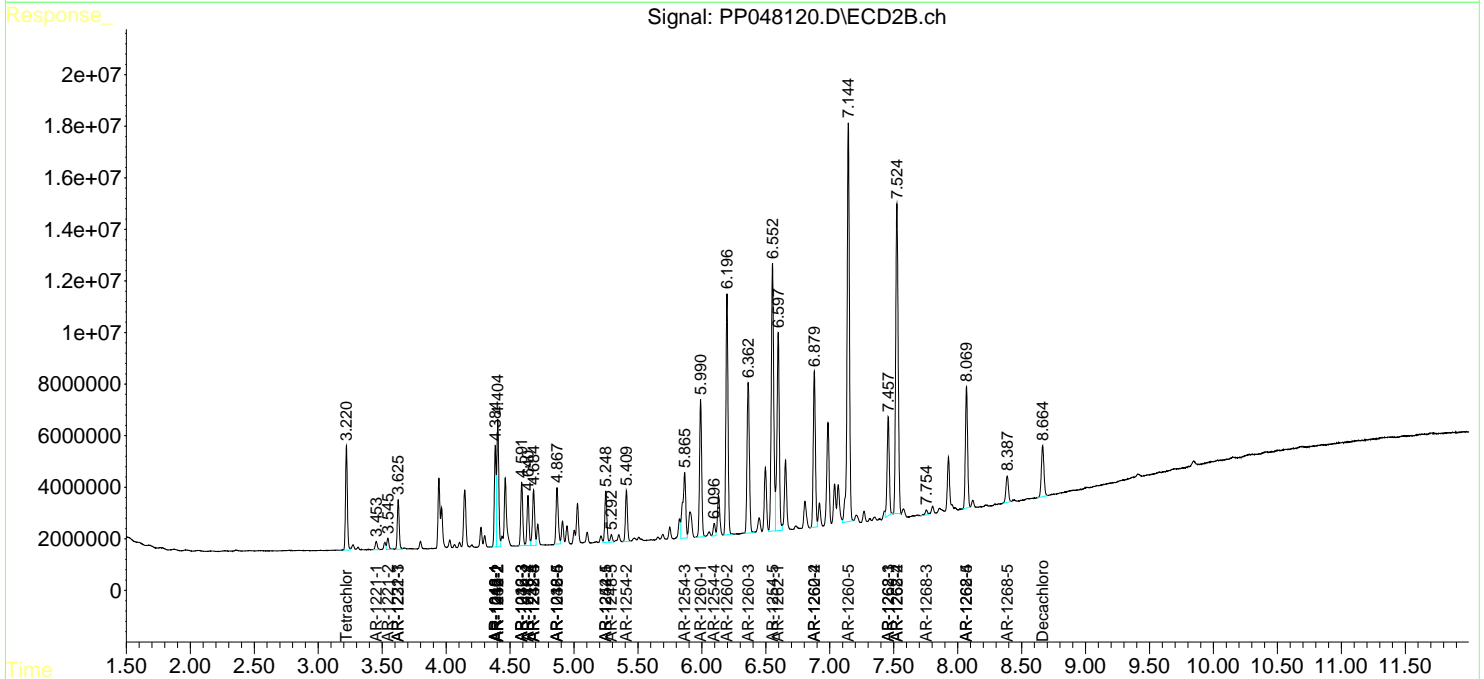
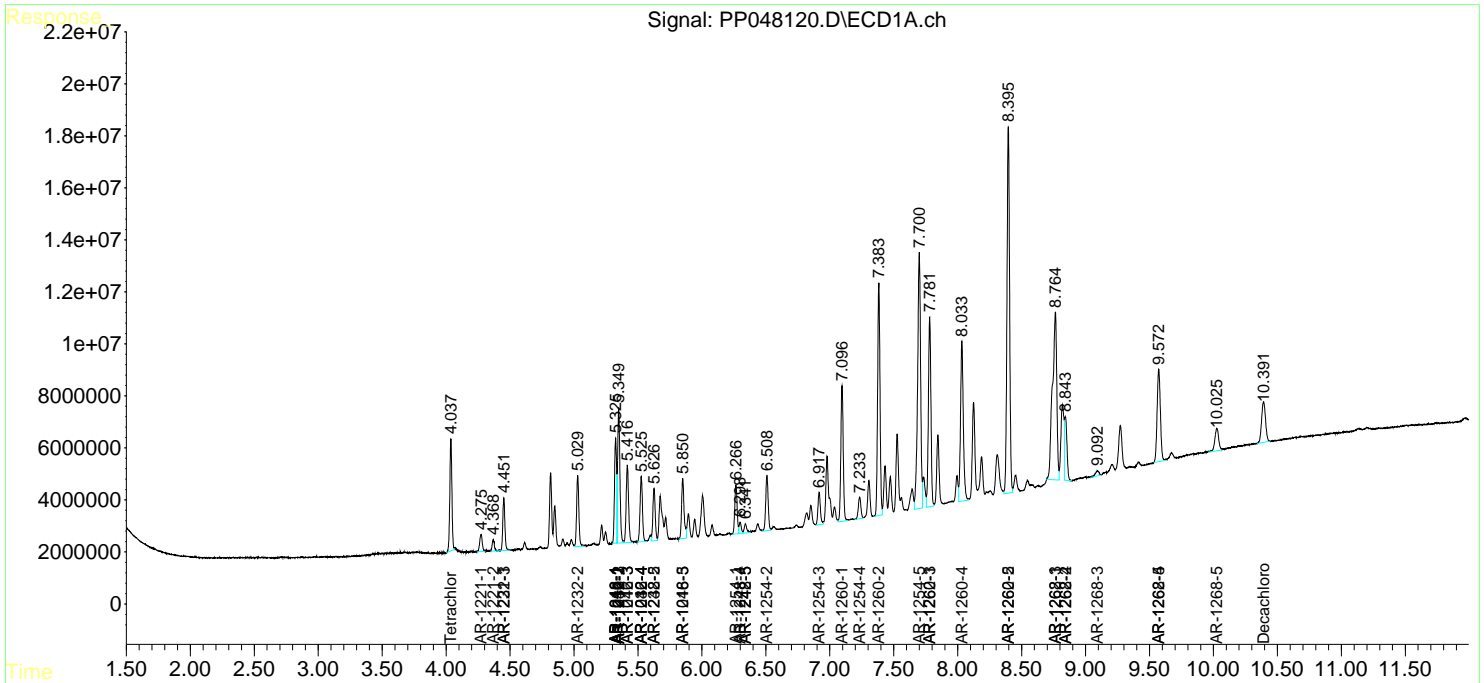
(f)=RT Delta > 1/2 Window (#)=Amounts differ by > 25% (m)=manual int.

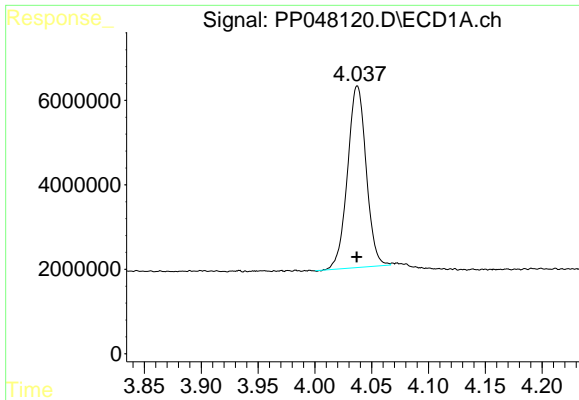
Data Path : Z:\pestpcbsrv\HPCHEM1\ECD_P\Data\PP052722\
 Data File : PP048120.D
 Signal(s) : Signal #1: ECD1A.ch Signal #2: ECD2B.ch
 Acq On : 27 May 2022 23:10
 Operator : YP\AJ
 Sample : N2927-01MSD
 Misc :
 ALS Vial : 17 Sample Multiplier: 1

Instrument :
 ECD_P
 ClientSampleId :

Integration File signal 1: autoint1.e
 Integration File signal 2: autoint2.e
 Quant Time: May 28 00:36:32 2022
 Quant Method : Z:\pestpcbsrv\HPCHEM1\ECD_P\methods\PP052722.M
 Quant Title : GC EXTRACTABLES
 QLast Update : Fri May 27 23:53:39 2022
 Response via : Initial Calibration
 Integrator: ChemStation

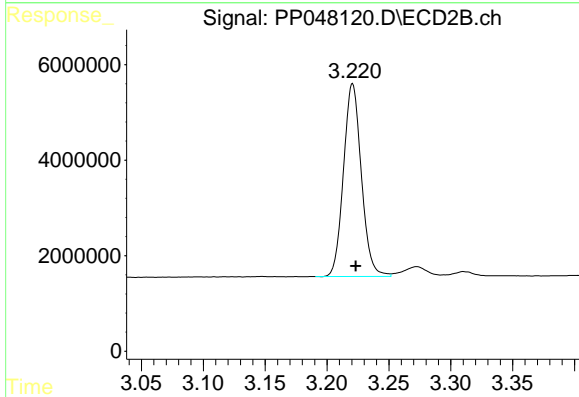
Volume Inj. : 2 µl
 Signal #1 Phase : ZB-MR1 Signal #2 Phase: ZB-MR2
 Signal #1 Info : 30Mx0.32mmx 0.50µ Signal #2 Info : 30M x 0.32mm x 0.25µm



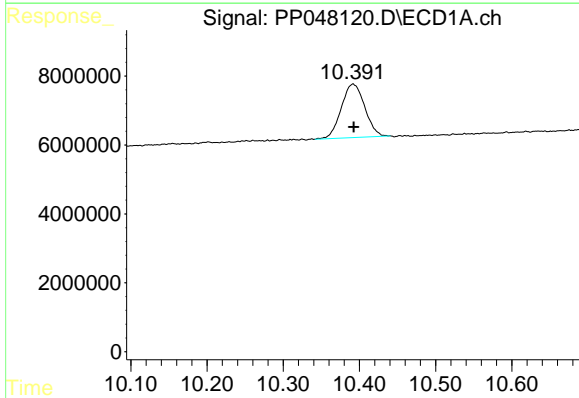


#1 Tetrachloro-m-xylene
 R.T.: 4.037 min
 Delta R.T.: 0.000 min
 Response: 49116487
 Conc: 20.97 ng/ml

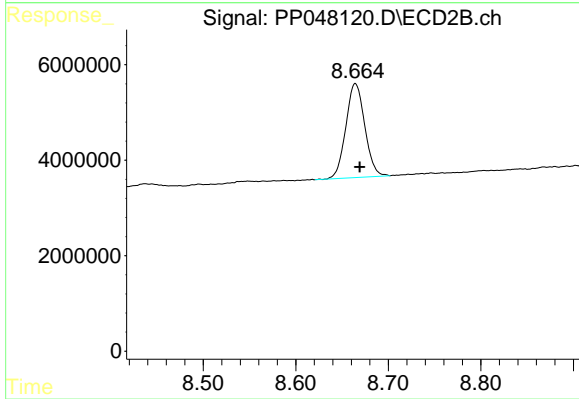
Instrument :
 ECD_P
 ClientSampleId :



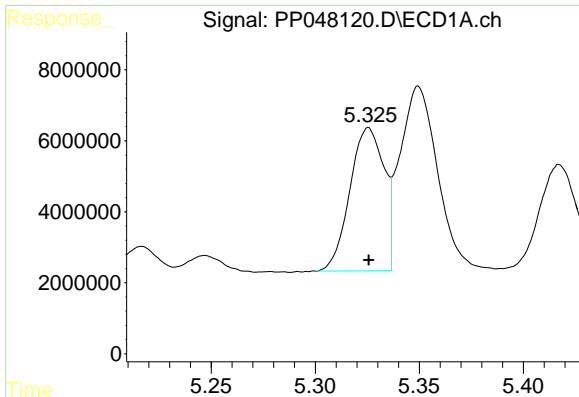
#1 Tetrachloro-m-xylene
 R.T.: 3.221 min
 Delta R.T.: -0.002 min
 Response: 40506931
 Conc: 20.55 ng/ml



#2 Decachlorobiphenyl
 R.T.: 10.392 min
 Delta R.T.: 0.000 min
 Response: 33373750
 Conc: 17.17 ng/ml



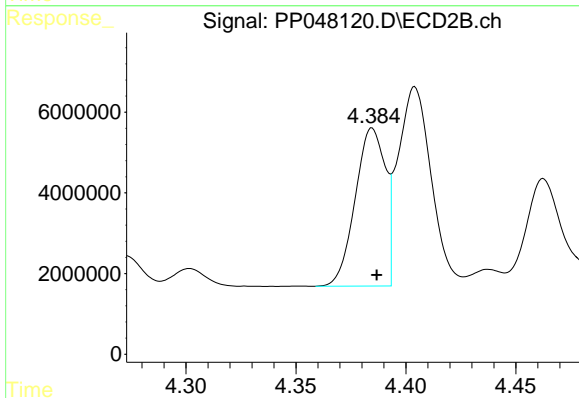
#2 Decachlorobiphenyl
 R.T.: 8.664 min
 Delta R.T.: -0.005 min
 Response: 28065680
 Conc: 17.36 ng/ml



#3 AR-1016-1

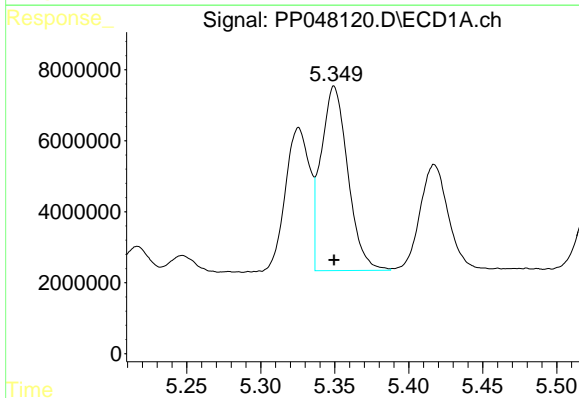
R.T.: 5.326 min
 Delta R.T.: 0.000 min
 Response: 45884158
 Conc: 544.11 ng/ml

Instrument :
 ECD_P
 ClientSampleId :



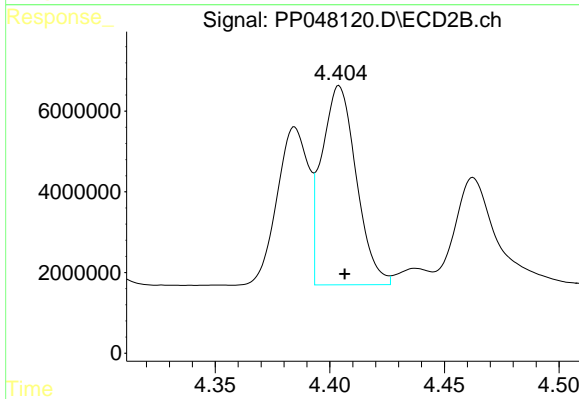
#3 AR-1016-1

R.T.: 4.385 min
 Delta R.T.: -0.002 min
 Response: 37401937
 Conc: 556.10 ng/ml



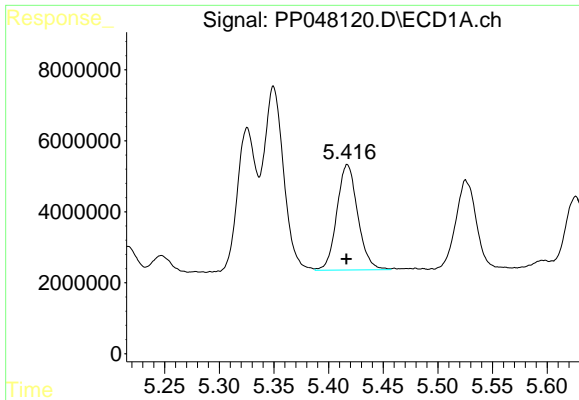
#4 AR-1016-2

R.T.: 5.350 min
 Delta R.T.: 0.000 min
 Response: 65623219
 Conc: 554.64 ng/ml



#4 AR-1016-2

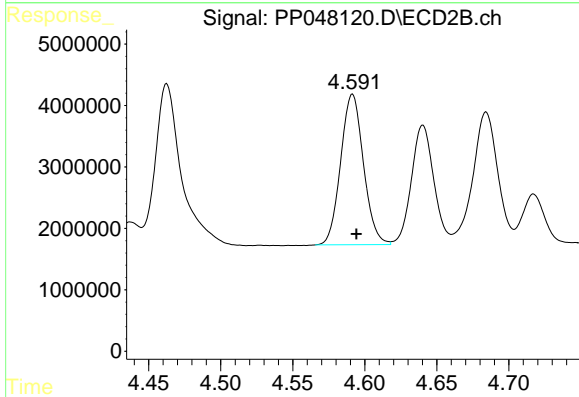
R.T.: 4.404 min
 Delta R.T.: -0.002 min
 Response: 51865592
 Conc: 556.91 ng/ml



#5 AR-1016-3

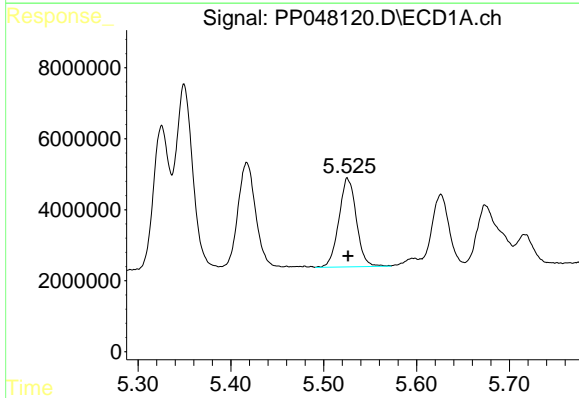
R.T.: 5.417 min
 Delta R.T.: 0.000 min
 Response: 39565036
 Conc: 585.49 ng/ml

Instrument :
 ECD_P
 ClientSampleId :



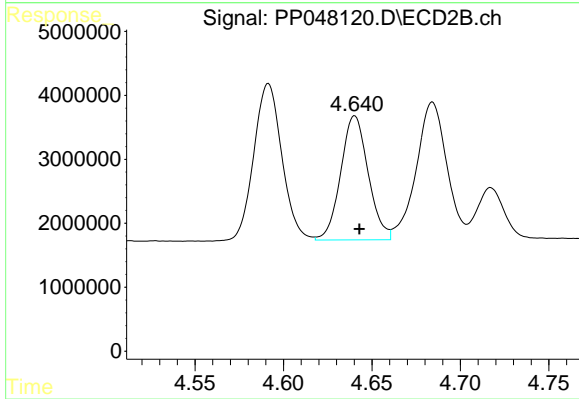
#5 AR-1016-3

R.T.: 4.592 min
 Delta R.T.: -0.003 min
 Response: 27028154
 Conc: 527.61 ng/ml



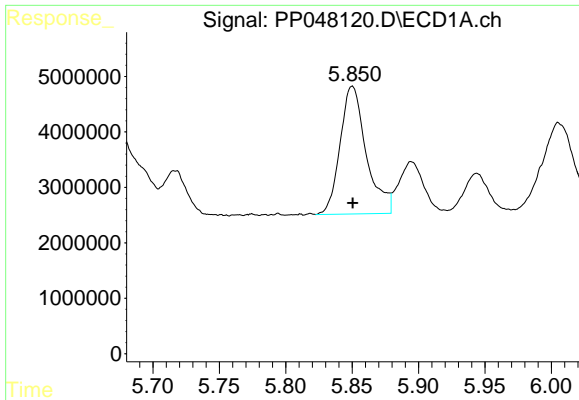
#6 AR-1016-4

R.T.: 5.526 min
 Delta R.T.: 0.000 min
 Response: 32721852
 Conc: 530.85 ng/ml



#6 AR-1016-4

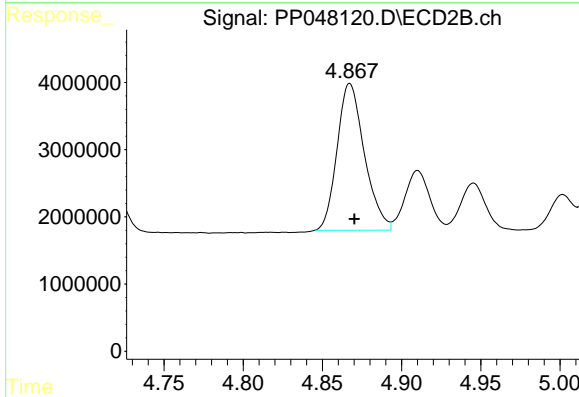
R.T.: 4.640 min
 Delta R.T.: -0.003 min
 Response: 21002318
 Conc: 551.23 ng/ml



#7 AR-1016-5

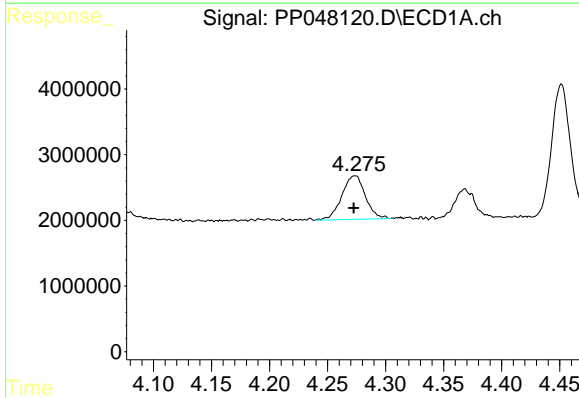
R.T.: 5.850 min
 Delta R.T.: 0.000 min
 Response: 31607087
 Conc: 561.11 ng/ml

Instrument :
 ECD_P
 ClientSampleId :



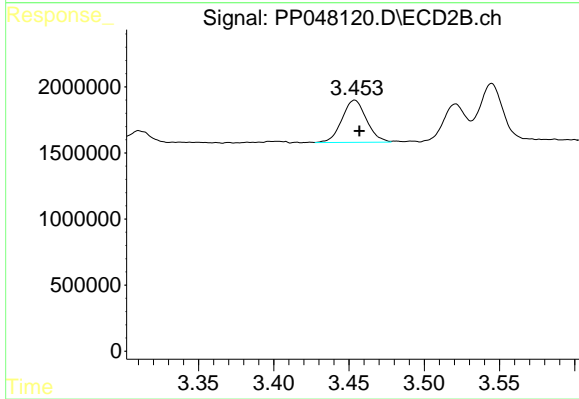
#7 AR-1016-5

R.T.: 4.867 min
 Delta R.T.: -0.003 min
 Response: 26243480
 Conc: 549.65 ng/ml



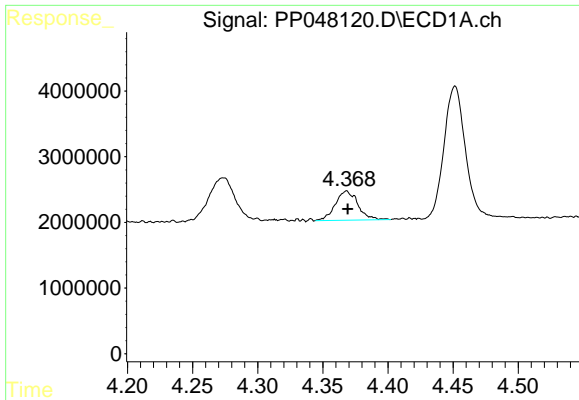
#8 AR-1221-1

R.T.: 4.274 min
 Delta R.T.: 0.001 min
 Response: 9319486
 Conc: 352.53 ng/ml



#8 AR-1221-1

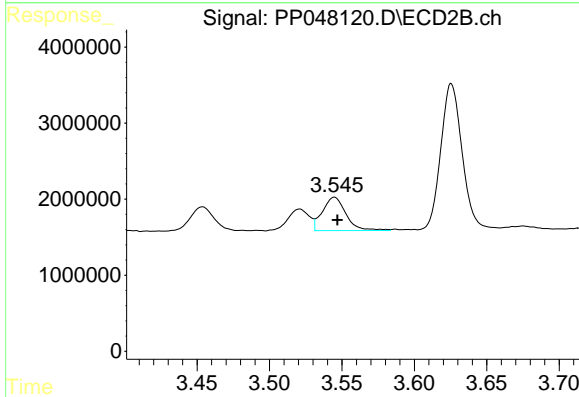
R.T.: 3.454 min
 Delta R.T.: -0.003 min
 Response: 3639795
 Conc: 175.60 ng/ml



#9 AR-1221-2

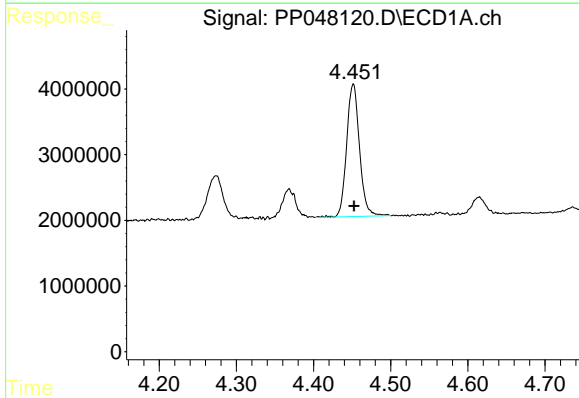
R.T.: 4.368 min
 Delta R.T.: 0.000 min
 Response: 5415170
 Conc: 264.40 ng/ml

Instrument :
 ECD_P
 ClientSampleId :



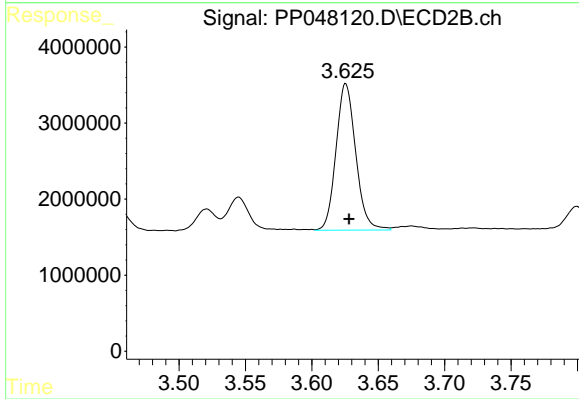
#9 AR-1221-2

R.T.: 3.545 min
 Delta R.T.: -0.002 min
 Response: 4970857
 Conc: 323.63 ng/ml



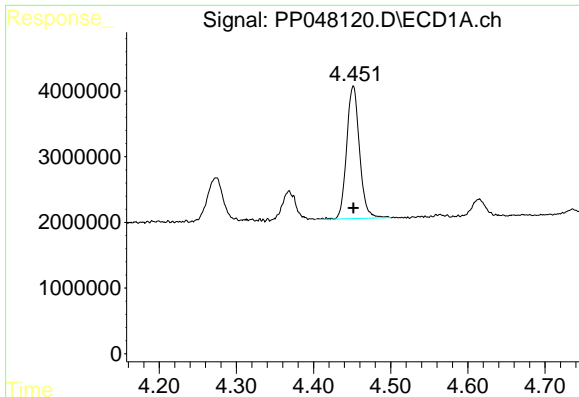
#10 AR-1221-3

R.T.: 4.452 min
 Delta R.T.: 0.000 min
 Response: 23322640
 Conc: 372.52 ng/ml



#10 AR-1221-3

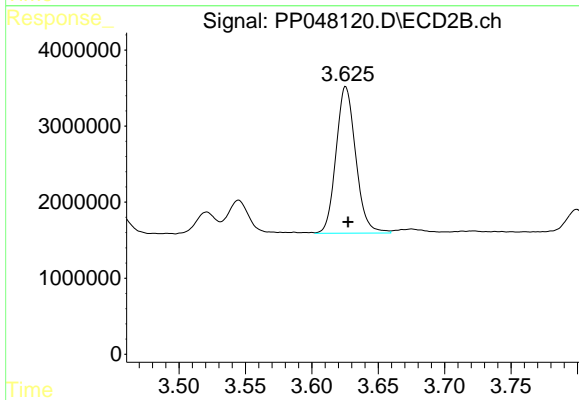
R.T.: 3.625 min
 Delta R.T.: -0.003 min
 Response: 19919721
 Conc: 401.65 ng/ml



#11 AR-1232-1

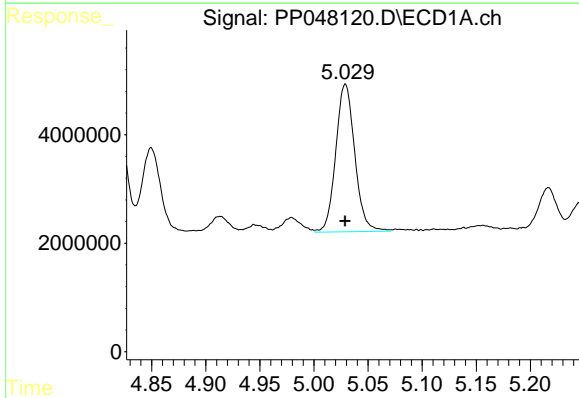
R.T.: 4.452 min
 Delta R.T.: 0.000 min
 Response: 23322640
 Conc: 449.02 ng/ml

Instrument :
 ECD_P
 ClientSampleId :



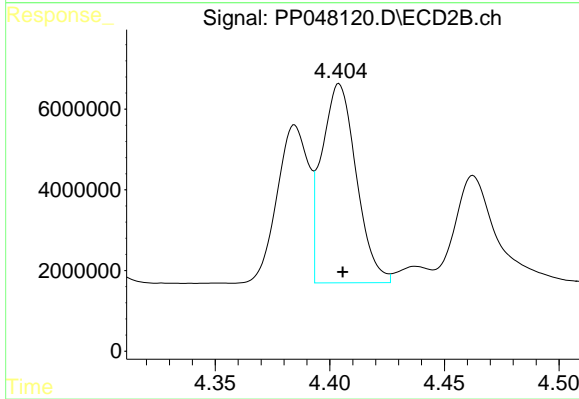
#11 AR-1232-1

R.T.: 3.625 min
 Delta R.T.: -0.002 min
 Response: 19919721
 Conc: 461.20 ng/ml



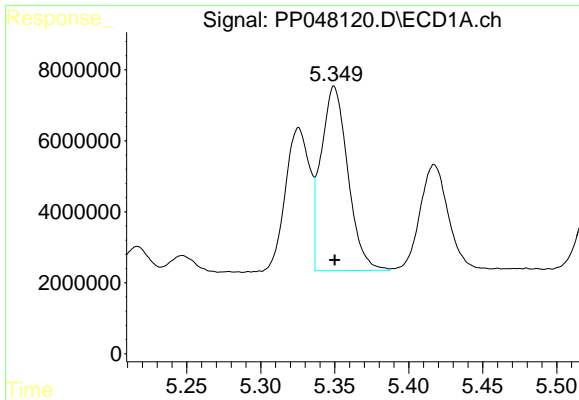
#12 AR-1232-2

R.T.: 5.029 min
 Delta R.T.: 0.000 min
 Response: 33264508
 Conc: 1385.56 ng/ml



#12 AR-1232-2

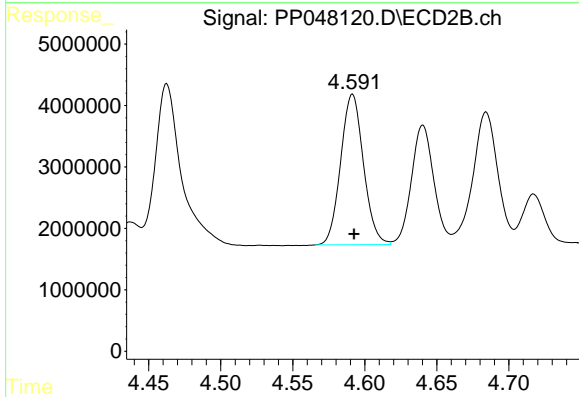
R.T.: 4.404 min
 Delta R.T.: -0.002 min
 Response: 51865592
 Conc: 1287.29 ng/ml



#13 AR-1232-3

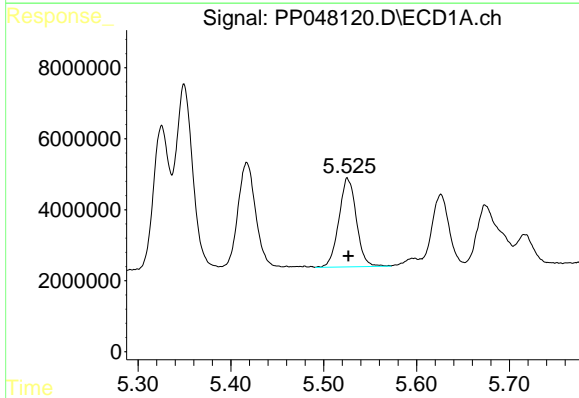
R.T.: 5.350 min
 Delta R.T.: 0.000 min
 Response: 65623219
 Conc: 1322.46 ng/ml

Instrument :
 ECD_P
 ClientSampleId :



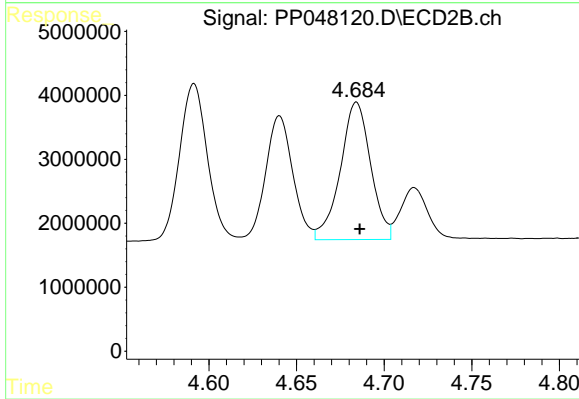
#13 AR-1232-3

R.T.: 4.592 min
 Delta R.T.: -0.001 min
 Response: 27028154
 Conc: 1310.08 ng/ml



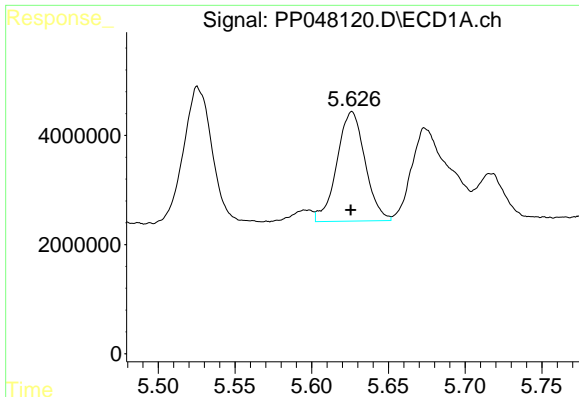
#14 AR-1232-4

R.T.: 5.526 min
 Delta R.T.: -0.001 min
 Response: 32721852
 Conc: 1368.83 ng/ml



#14 AR-1232-4

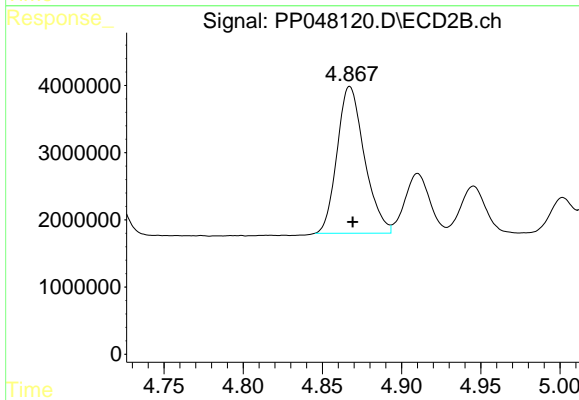
R.T.: 4.684 min
 Delta R.T.: -0.002 min
 Response: 25888607
 Conc: 1491.77 ng/ml



#15 AR-1232-5

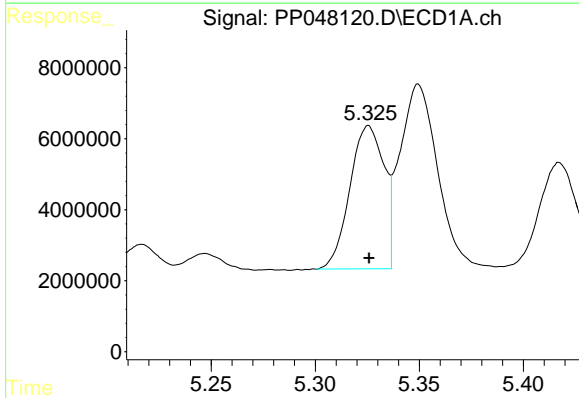
R.T.: 5.626 min
 Delta R.T.: 0.000 min
 Response: 25753413
 Conc: 1576.35 ng/ml

Instrument :
 ECD_P
 ClientSampleId :



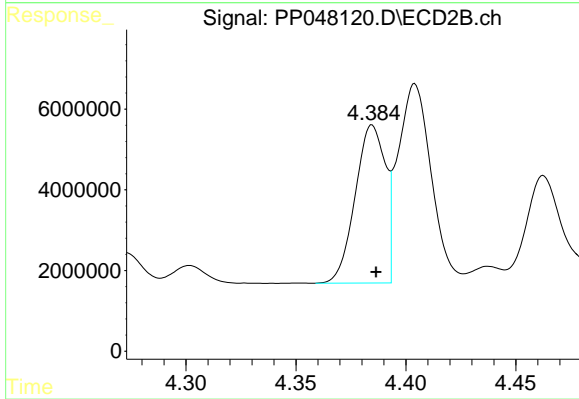
#15 AR-1232-5

R.T.: 4.867 min
 Delta R.T.: -0.002 min
 Response: 26243480
 Conc: 1339.79 ng/ml



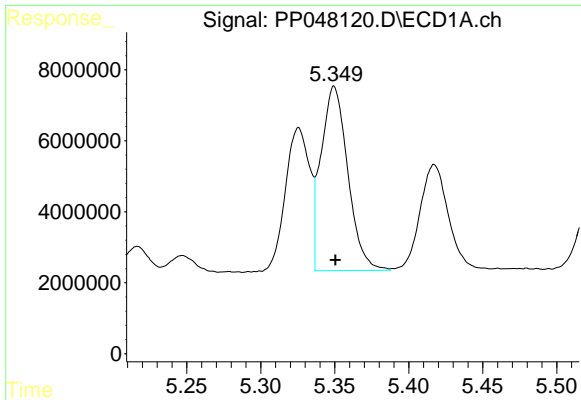
#16 AR-1242-1

R.T.: 5.326 min
 Delta R.T.: 0.000 min
 Response: 45884158
 Conc: 820.51 ng/ml



#16 AR-1242-1

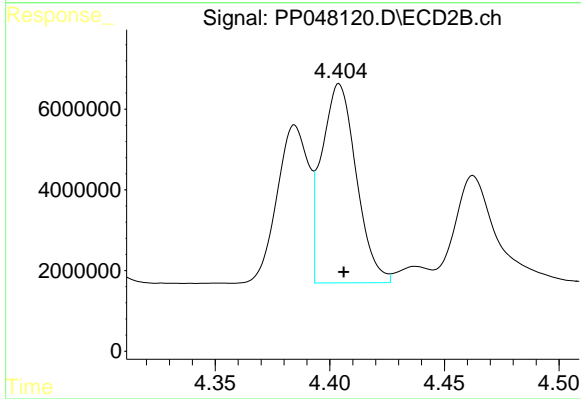
R.T.: 4.385 min
 Delta R.T.: -0.002 min
 Response: 37401937
 Conc: 784.32 ng/ml



#17 AR-1242-2

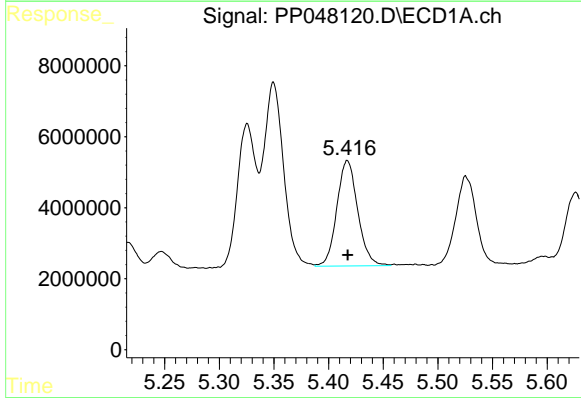
R.T.: 5.350 min
 Delta R.T.: 0.000 min
 Response: 65623219
 Conc: 797.91 ng/ml

Instrument :
 ECD_P
 ClientSampleId :



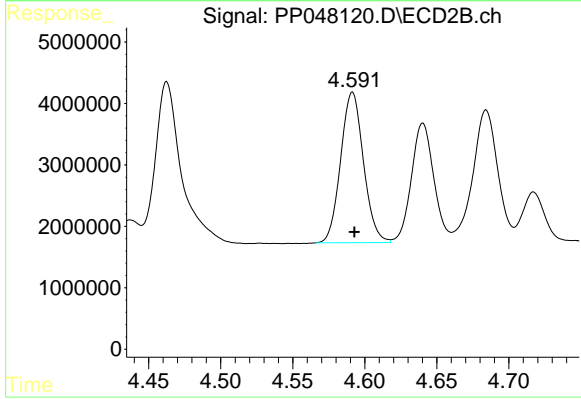
#17 AR-1242-2

R.T.: 4.404 min
 Delta R.T.: -0.002 min
 Response: 51865592
 Conc: 780.57 ng/ml



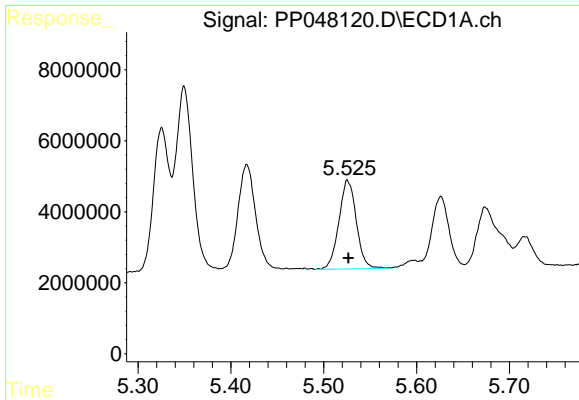
#18 AR-1242-3

R.T.: 5.417 min
 Delta R.T.: 0.000 min
 Response: 39565036
 Conc: 805.98 ng/ml



#18 AR-1242-3

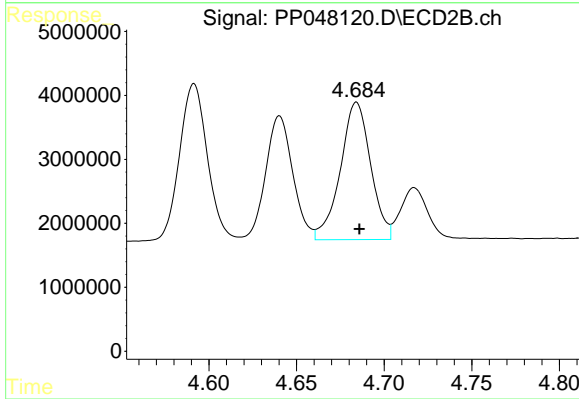
R.T.: 4.592 min
 Delta R.T.: -0.001 min
 Response: 27028154
 Conc: 779.19 ng/ml



#19 AR-1242-4

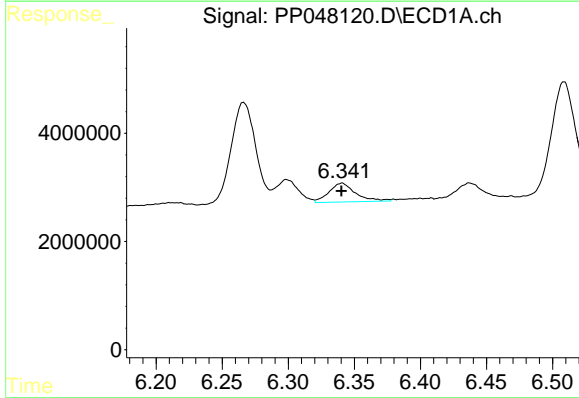
R.T.: 5.526 min
 Delta R.T.: -0.001 min
 Response: 32721852
 Conc: 826.88 ng/ml

Instrument :
 ECD_P
 ClientSampleId :



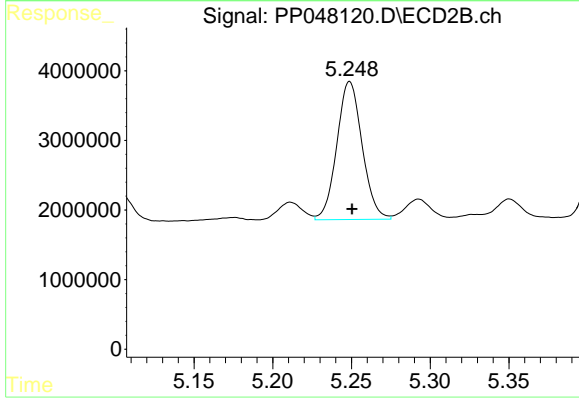
#19 AR-1242-4

R.T.: 4.684 min
 Delta R.T.: -0.002 min
 Response: 25888607
 Conc: 806.03 ng/ml



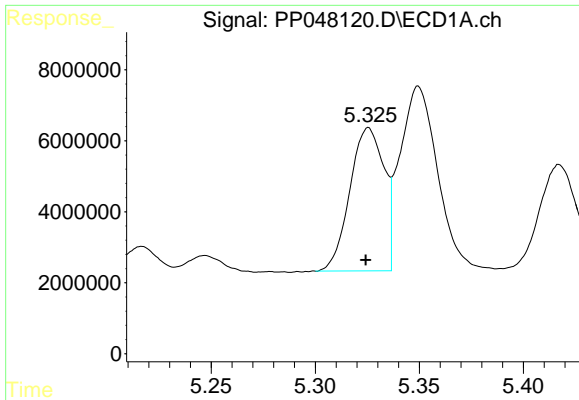
#20 AR-1242-5

R.T.: 6.341 min
 Delta R.T.: 0.000 min
 Response: 4878203
 Conc: 114.54 ng/ml



#20 AR-1242-5

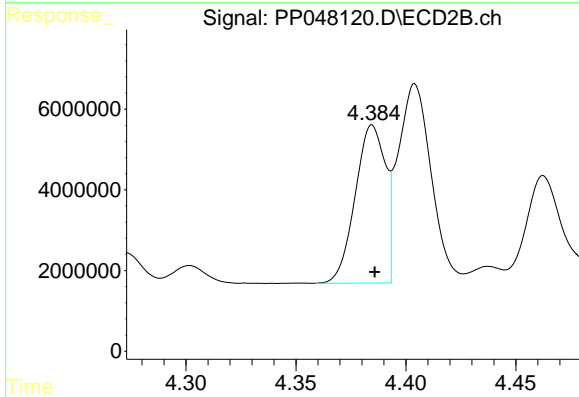
R.T.: 5.249 min
 Delta R.T.: -0.001 min
 Response: 22185857
 Conc: 531.24 ng/ml



#21 AR-1248-1

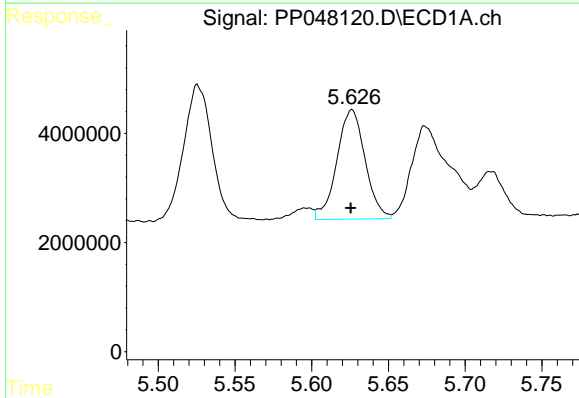
R.T.: 5.326 min
 Delta R.T.: 0.001 min
 Response: 45884158
 Conc: 1063.75 ng/ml

Instrument :
 ECD_P
 ClientSampleId :



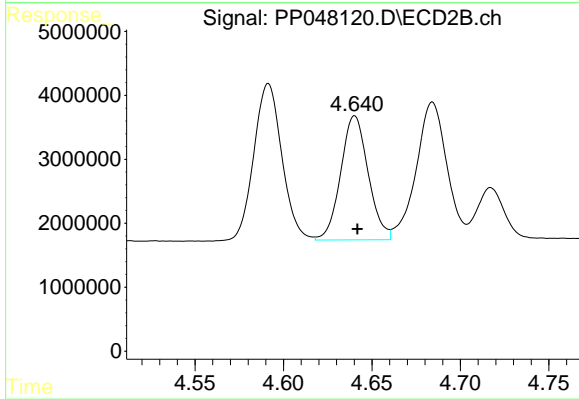
#21 AR-1248-1

R.T.: 4.385 min
 Delta R.T.: -0.001 min
 Response: 37401937
 Conc: 1021.91 ng/ml



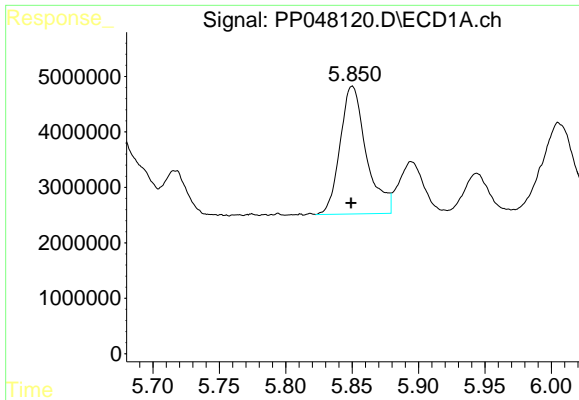
#22 AR-1248-2

R.T.: 5.626 min
 Delta R.T.: 0.000 min
 Response: 25753413
 Conc: 450.32 ng/ml



#22 AR-1248-2

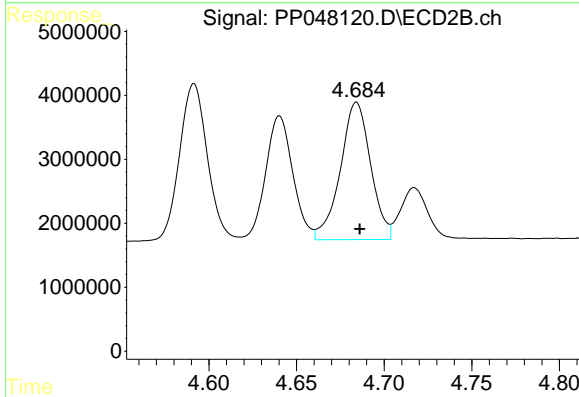
R.T.: 4.640 min
 Delta R.T.: -0.001 min
 Response: 21002318
 Conc: 441.01 ng/ml



#23 AR-1248-3

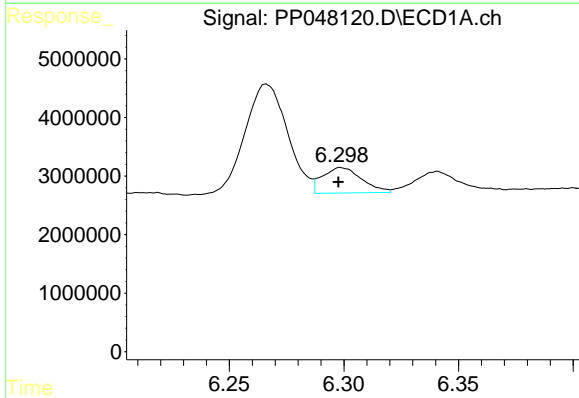
R.T.: 5.850 min
 Delta R.T.: 0.000 min
 Response: 31607087
 Conc: 466.98 ng/ml

Instrument :
 ECD_P
 ClientSampleId :



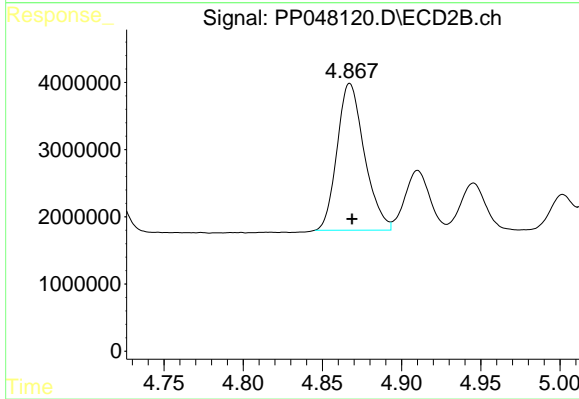
#23 AR-1248-3

R.T.: 4.684 min
 Delta R.T.: -0.002 min
 Response: 25888607
 Conc: 522.57 ng/ml



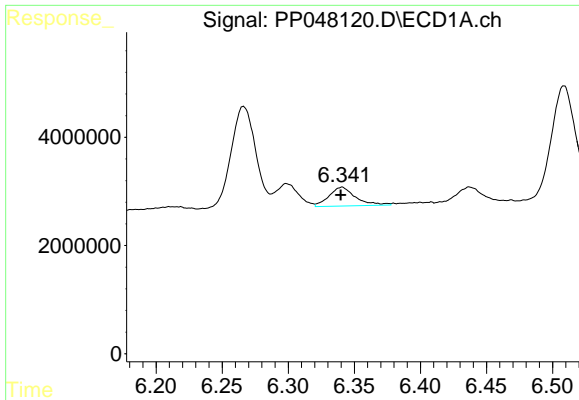
#24 AR-1248-4

R.T.: 6.299 min
 Delta R.T.: 0.001 min
 Response: 5196612
 Conc: 66.82 ng/ml



#24 AR-1248-4

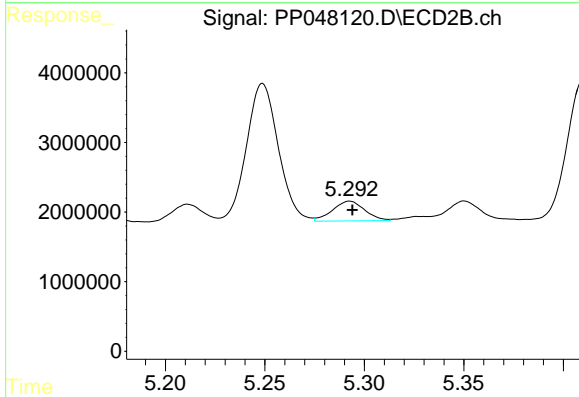
R.T.: 4.867 min
 Delta R.T.: -0.001 min
 Response: 26243480
 Conc: 450.46 ng/ml



#25 AR-1248-5

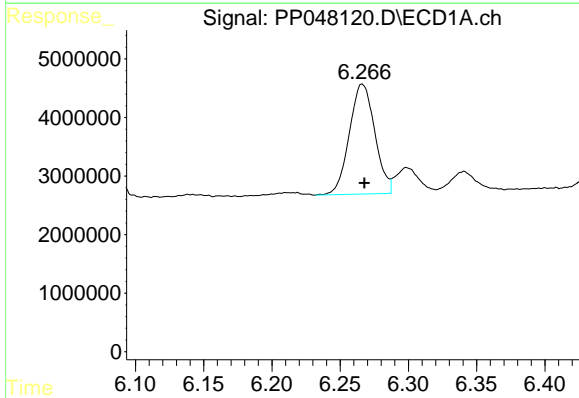
R.T.: 6.341 min
 Delta R.T.: 0.000 min
 Response: 4878203
 Conc: 64.13 ng/ml

Instrument :
 ECD_P
 ClientSampleId :



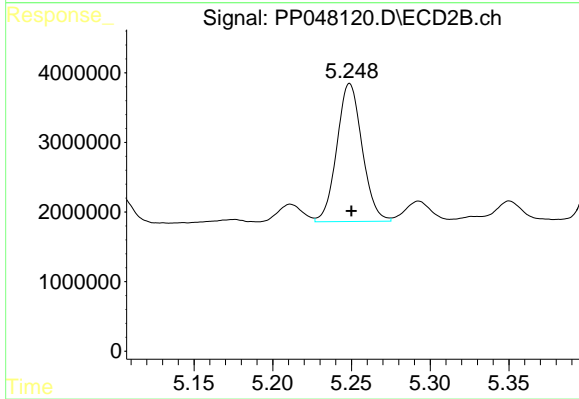
#25 AR-1248-5

R.T.: 5.293 min
 Delta R.T.: -0.001 min
 Response: 3206489
 Conc: 53.16 ng/ml



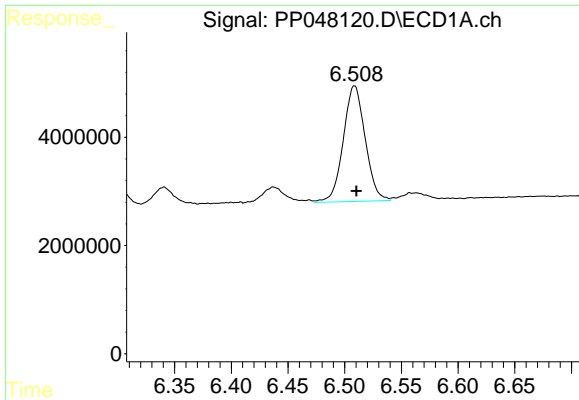
#26 AR-1254-1

R.T.: 6.266 min
 Delta R.T.: -0.002 min
 Response: 24399459
 Conc: 336.10 ng/ml



#26 AR-1254-1

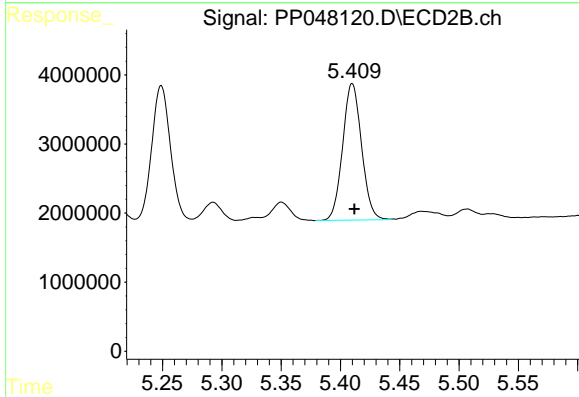
R.T.: 5.249 min
 Delta R.T.: -0.001 min
 Response: 22185857
 Conc: 253.08 ng/ml



#27 AR-1254-2

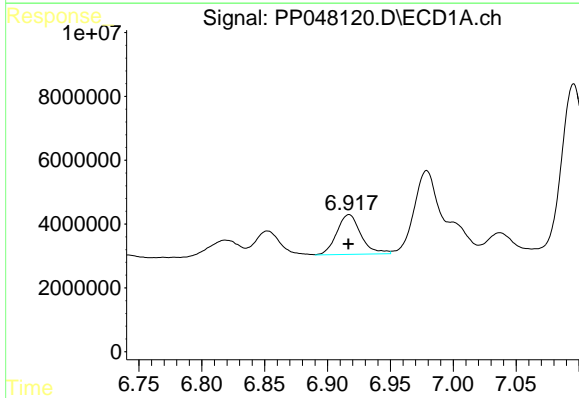
R.T.: 6.509 min
 Delta R.T.: -0.002 min
 Response: 28767982
 Conc: 241.77 ng/ml

Instrument :
 ECD_P
 ClientSampleId :



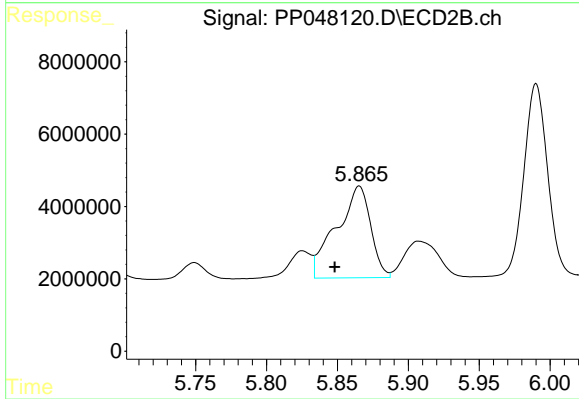
#27 AR-1254-2

R.T.: 5.410 min
 Delta R.T.: -0.002 min
 Response: 21965412
 Conc: 292.34 ng/ml



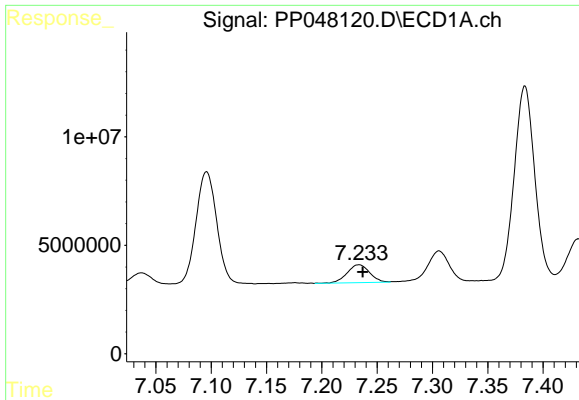
#28 AR-1254-3

R.T.: 6.917 min
 Delta R.T.: 0.000 min
 Response: 16685484
 Conc: 140.46 ng/ml



#28 AR-1254-3

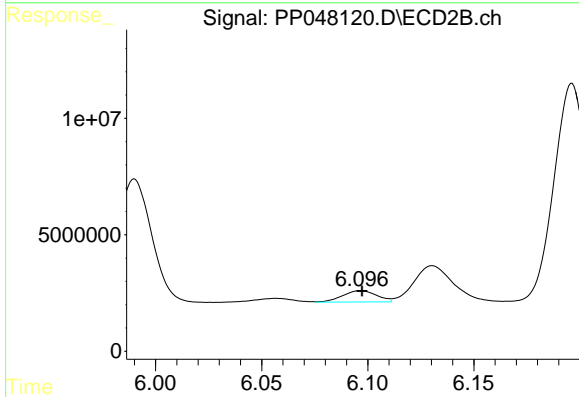
R.T.: 5.865 min
 Delta R.T.: 0.017 min
 Response: 42667259
 Conc: 347.75 ng/ml



#29 AR-1254-4

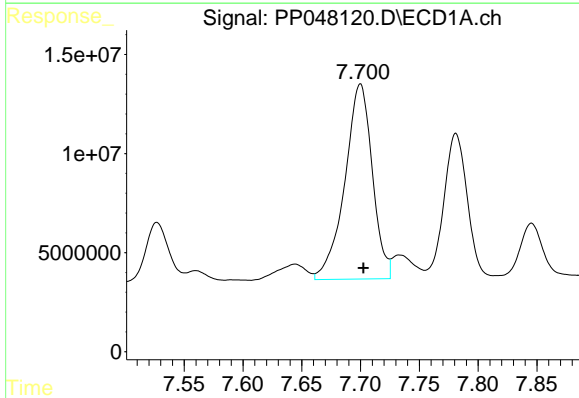
R.T.: 7.234 min
 Delta R.T.: -0.003 min
 Response: 11705362
 Conc: 129.77 ng/ml

Instrument :
 ECD_P
 ClientSampleId :



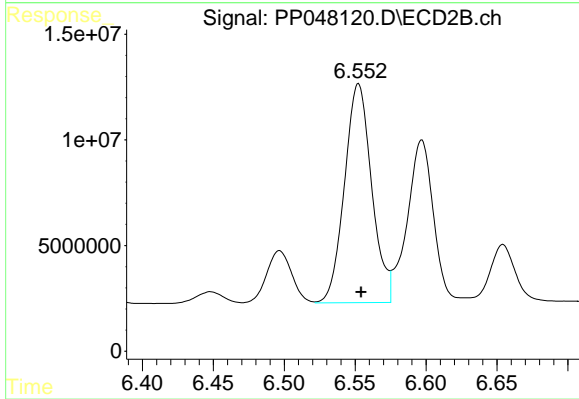
#29 AR-1254-4

R.T.: 6.097 min
 Delta R.T.: 0.000 min
 Response: 5363045
 Conc: 71.42 ng/ml



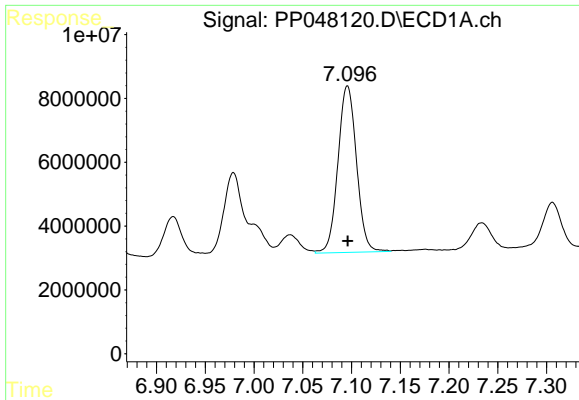
#30 AR-1254-5

R.T.: 7.700 min
 Delta R.T.: -0.002 min
 Response: 160330431
 Conc: 1730.22 ng/ml



#30 AR-1254-5

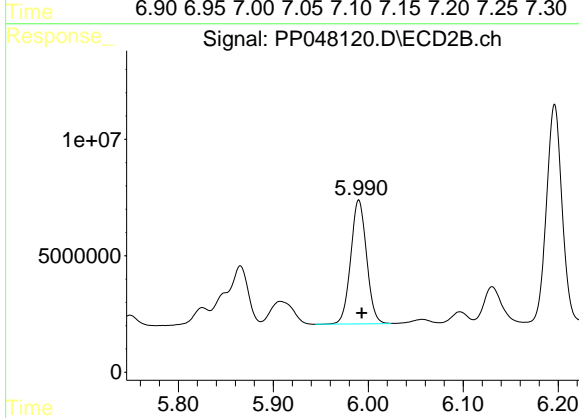
R.T.: 6.552 min
 Delta R.T.: -0.002 min
 Response: 138216836
 Conc: 1365.28 ng/ml



#31 AR-1260-1

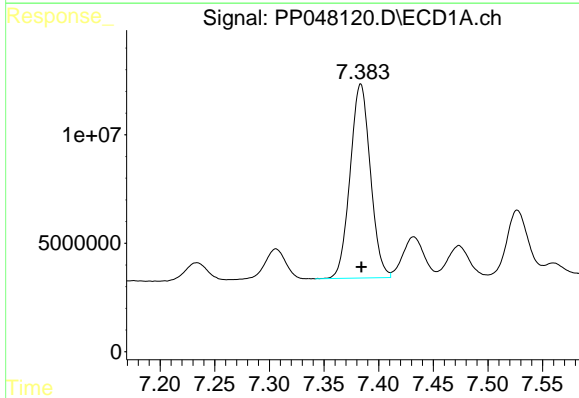
R.T.: 7.096 min
 Delta R.T.: 0.000 min
 Response: 69094396
 Conc: 740.27 ng/ml

Instrument :
 ECD_P
 ClientSampleId :



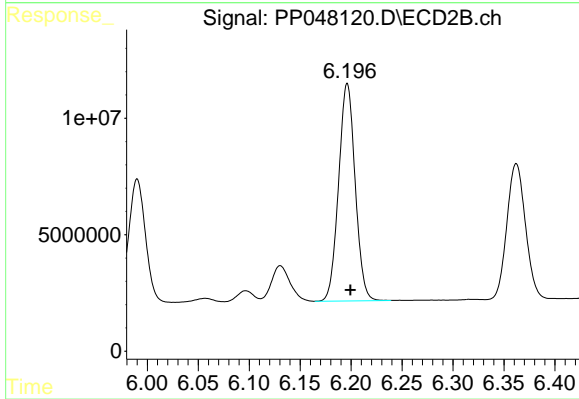
#31 AR-1260-1

R.T.: 5.990 min
 Delta R.T.: -0.003 min
 Response: 61701861
 Conc: 720.79 ng/ml



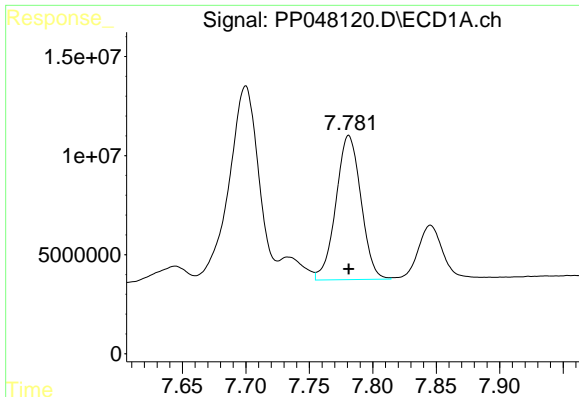
#32 AR-1260-2

R.T.: 7.384 min
 Delta R.T.: 0.000 min
 Response: 115249628
 Conc: 1030.99 ng/ml



#32 AR-1260-2

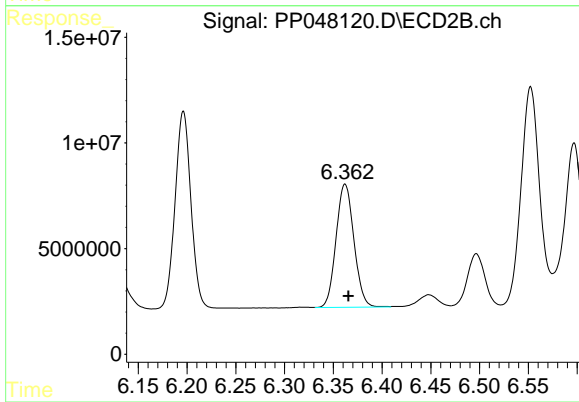
R.T.: 6.196 min
 Delta R.T.: -0.003 min
 Response: 105698484
 Conc: 1025.43 ng/ml



#33 AR-1260-3

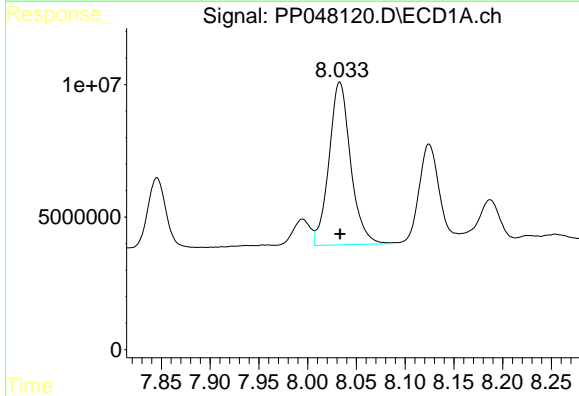
R.T.: 7.781 min
 Delta R.T.: 0.000 min
 Response: 100037573
 Conc: 1167.89 ng/ml

Instrument :
 ECD_P
 ClientSampleId :



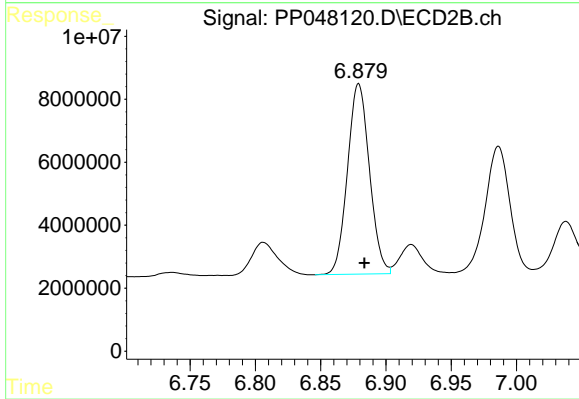
#33 AR-1260-3

R.T.: 6.362 min
 Delta R.T.: -0.003 min
 Response: 74262350
 Conc: 749.95 ng/ml



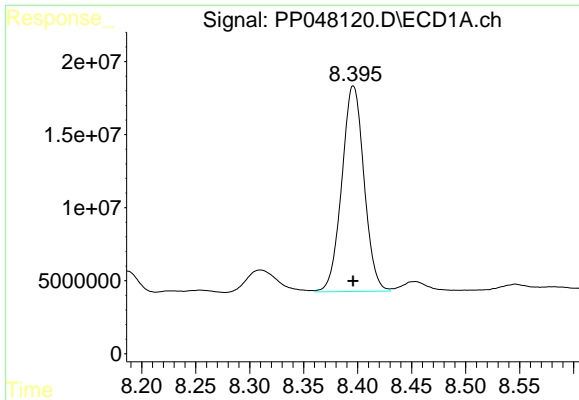
#34 AR-1260-4

R.T.: 8.033 min
 Delta R.T.: 0.000 min
 Response: 94707353
 Conc: 912.78 ng/ml



#34 AR-1260-4

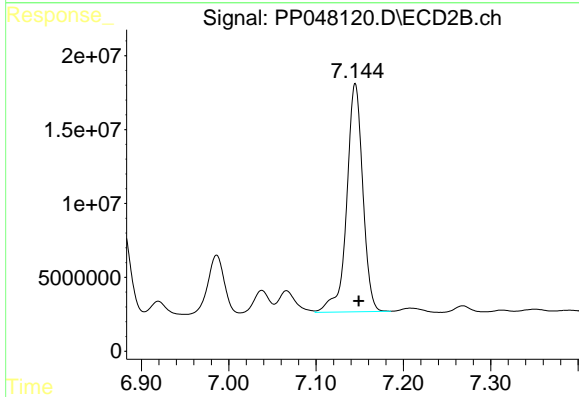
R.T.: 6.879 min
 Delta R.T.: -0.004 min
 Response: 70782255
 Conc: 850.23 ng/ml



#35 AR-1260-5

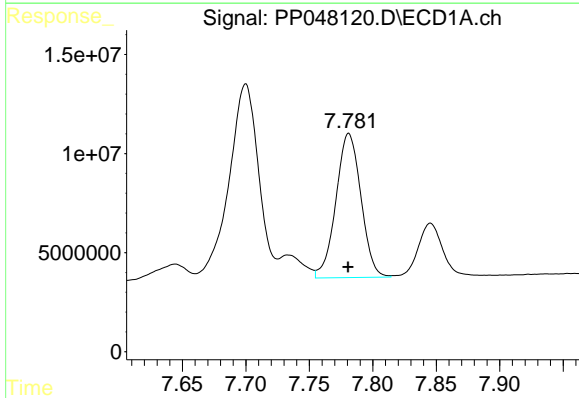
R.T.: 8.396 min
 Delta R.T.: 0.000 min
 Response: 201548123
 Conc: 976.70 ng/ml

Instrument :
 ECD_P
 ClientSampleId :



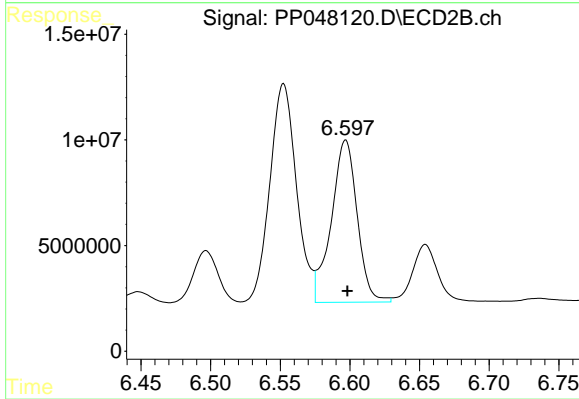
#35 AR-1260-5

R.T.: 7.145 min
 Delta R.T.: -0.004 min
 Response: 197532145
 Conc: 995.56 ng/ml



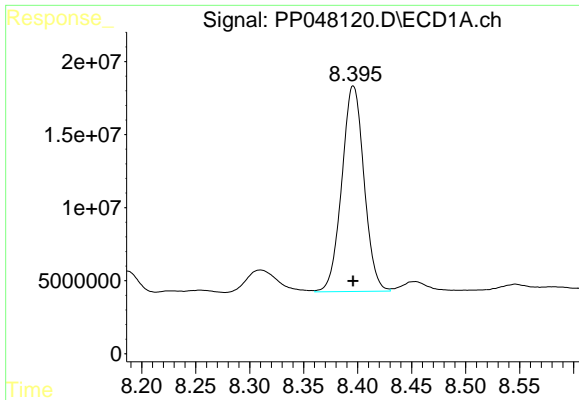
#36 AR-1262-1

R.T.: 7.781 min
 Delta R.T.: 0.000 min
 Response: 100037573
 Conc: 877.14 ng/ml



#36 AR-1262-1

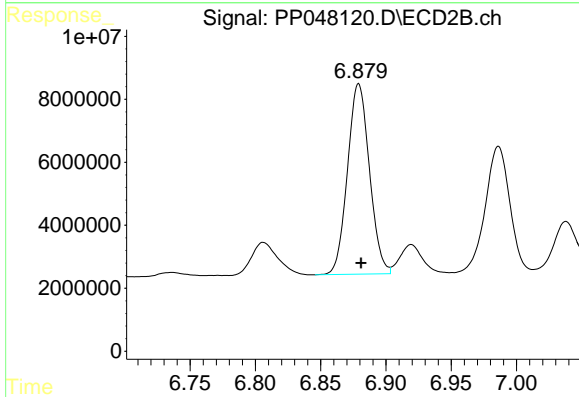
R.T.: 6.597 min
 Delta R.T.: -0.001 min
 Response: 99194604
 Conc: 918.11 ng/ml



#37 AR-1262-2

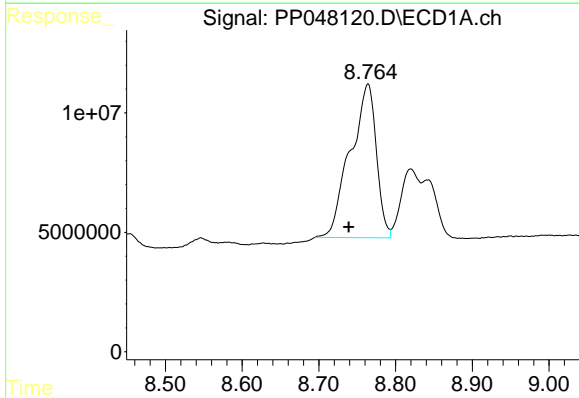
R.T.: 8.396 min
 Delta R.T.: 0.000 min
 Response: 201548123
 Conc: 945.57 ng/ml

Instrument :
 ECD_P
 ClientSampleId :



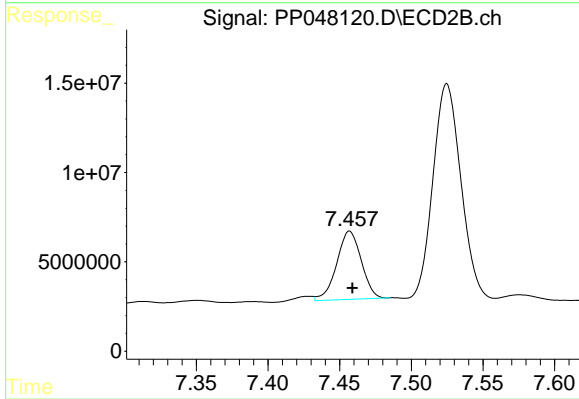
#37 AR-1262-2

R.T.: 6.879 min
 Delta R.T.: -0.002 min
 Response: 70782255
 Conc: 715.23 ng/ml



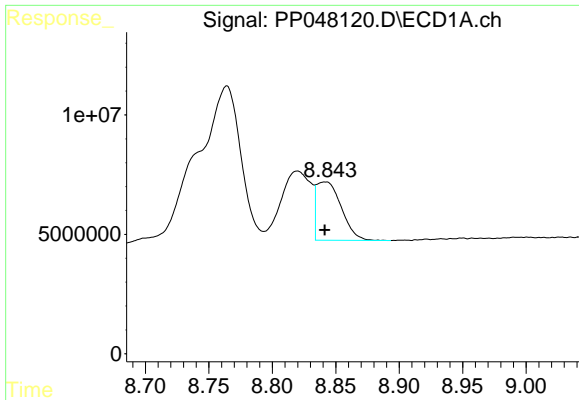
#38 AR-1262-3

R.T.: 8.764 min
 Delta R.T.: 0.025 min
 Response: 152258655
 Conc: 1633.79 ng/ml



#38 AR-1262-3

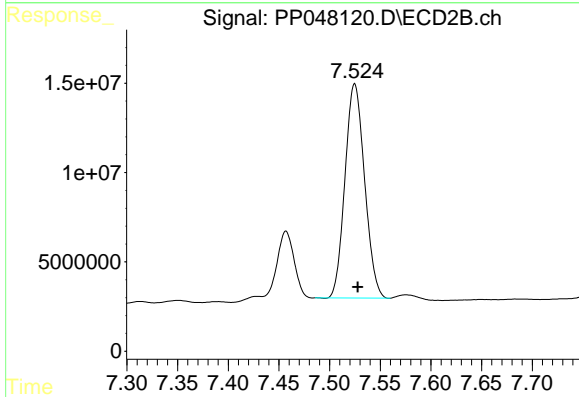
R.T.: 7.457 min
 Delta R.T.: -0.002 min
 Response: 45673501
 Conc: 606.92 ng/ml



#39 AR-1262-4

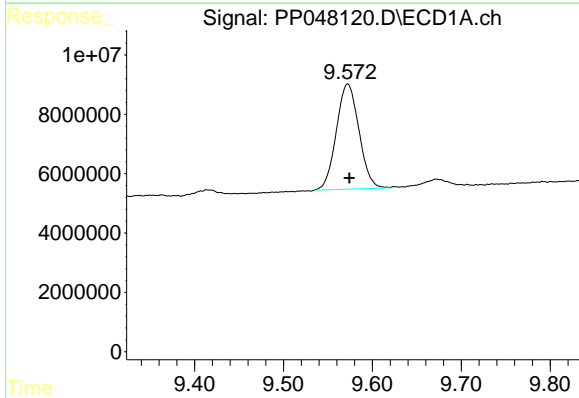
R.T.: 8.842 min
 Delta R.T.: 0.000 min
 Response: 33274151
 Conc: 559.62 ng/ml

Instrument :
 ECD_P
 ClientSampleId :



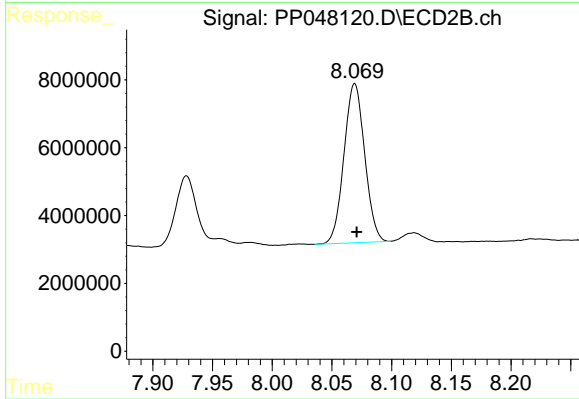
#39 AR-1262-4

R.T.: 7.525 min
 Delta R.T.: -0.003 min
 Response: 161431410
 Conc: 1108.38 ng/ml



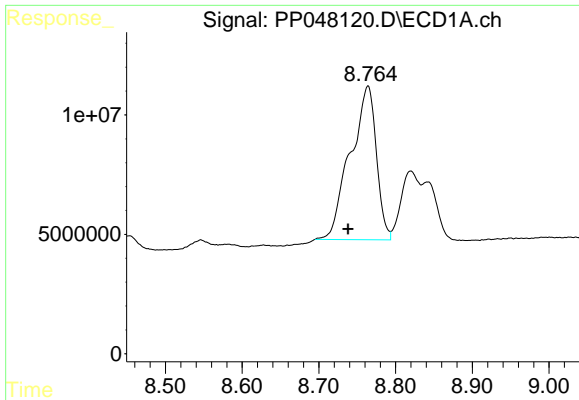
#40 AR-1262-5

R.T.: 9.572 min
 Delta R.T.: -0.002 min
 Response: 62806264
 Conc: 793.53 ng/ml



#40 AR-1262-5

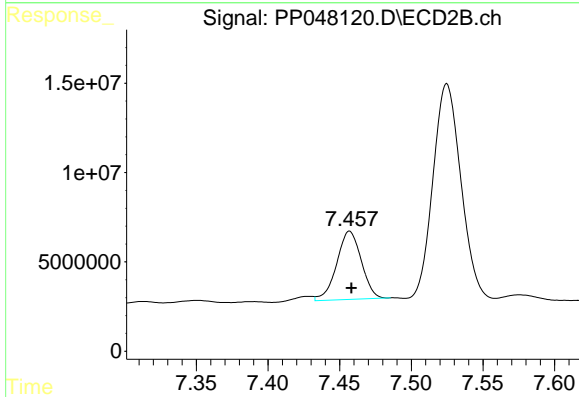
R.T.: 8.069 min
 Delta R.T.: -0.002 min
 Response: 56665688
 Conc: 839.58 ng/ml



#41 AR-1268-1

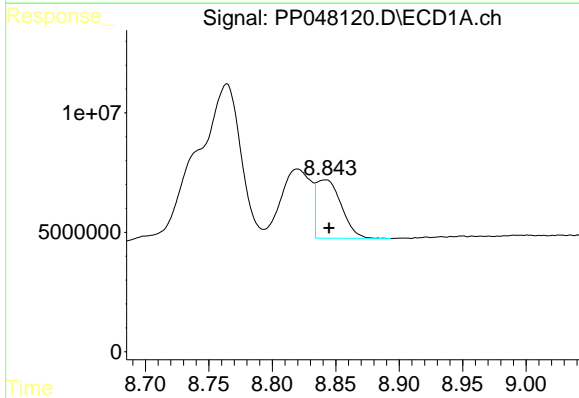
R.T.: 8.764 min
 Delta R.T.: 0.026 min
 Response: 152258655
 Conc: 575.57 ng/ml

Instrument :
 ECD_P
 ClientSampleId :



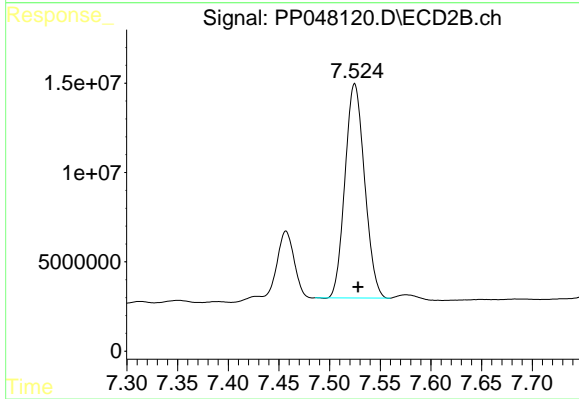
#41 AR-1268-1

R.T.: 7.457 min
 Delta R.T.: -0.001 min
 Response: 45673501
 Conc: 195.56 ng/ml



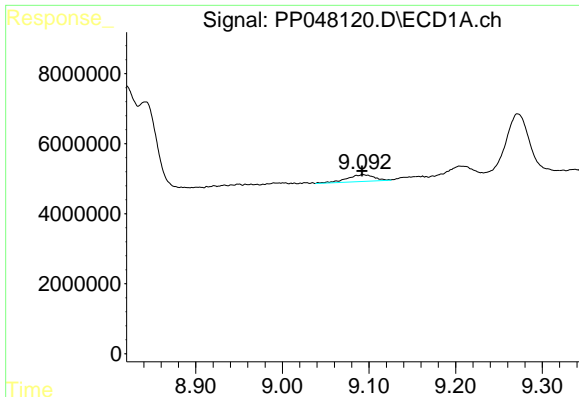
#42 AR-1268-2

R.T.: 8.842 min
 Delta R.T.: -0.003 min
 Response: 33274151
 Conc: 137.78 ng/ml



#42 AR-1268-2

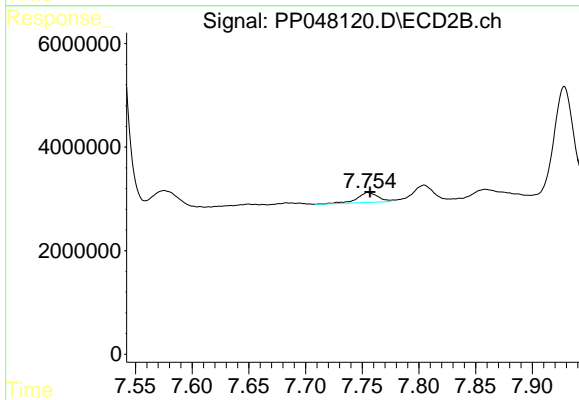
R.T.: 7.525 min
 Delta R.T.: -0.003 min
 Response: 161431410
 Conc: 746.11 ng/ml



#43 AR-1268-3

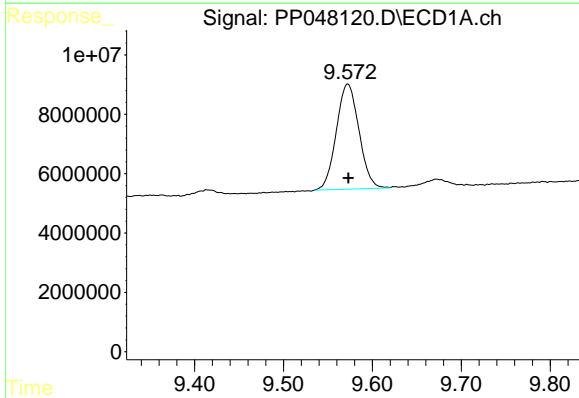
R.T.: 9.093 min
 Delta R.T.: 0.001 min
 Response: 4267613
 Conc: 20.76 ng/ml

Instrument :
 ECD_P
 ClientSampleId :



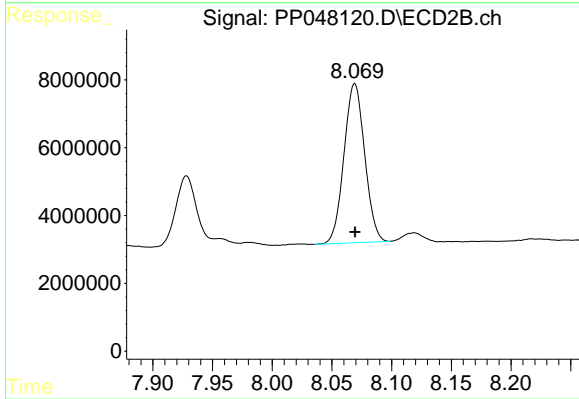
#43 AR-1268-3

R.T.: 7.755 min
 Delta R.T.: -0.002 min
 Response: 2504279
 Conc: 13.47 ng/ml



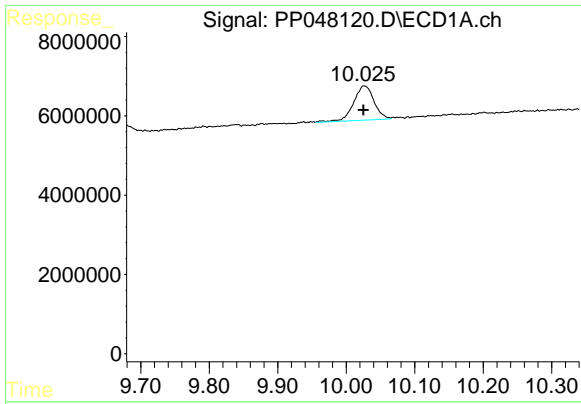
#44 AR-1268-4

R.T.: 9.572 min
 Delta R.T.: 0.000 min
 Response: 62806264
 Conc: 699.17 ng/ml



#44 AR-1268-4

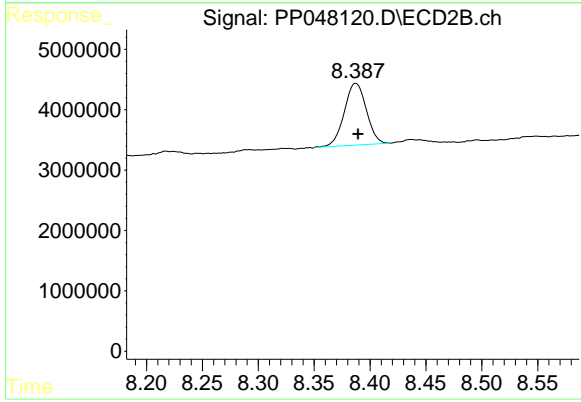
R.T.: 8.069 min
 Delta R.T.: 0.000 min
 Response: 56665688
 Conc: 689.78 ng/ml



#45 AR-1268-5

R.T.: 10.026 min
Delta R.T.: 0.001 min
Response: 17834639
Conc: 25.26 ng/ml

Instrument :
ECD_P
ClientSampleId :



#45 AR-1268-5

R.T.: 8.387 min
Delta R.T.: -0.002 min
Response: 14064641
Conc: 23.21 ng/ml