

Data Path : Z:\pestpcbsrv\HPCHEM1\ECD_P\Data\PP052725\
 Data File : PP072382.D
 Signal(s) : Signal #1: ECD1A.ch Signal #2: ECD2B.ch
 Acq On : 27 May 2025 17:49
 Operator : YP\AJ
 Sample : Q2122-06
 Misc :
 ALS Vial : 19 Sample Multiplier: 1

Instrument :
 ECD_P
 ClientSampleId :

Integration File signal 1: autoint1.e
 Integration File signal 2: autoint2.e
 Quant Time: May 28 06:34:16 2025
 Quant Method : Z:\pestpcbsrv\HPCHEM1\ECD_P\methods\PP051925.M
 Quant Title : GC EXTRACTABLES
 QLast Update : Sat May 24 03:32:20 2025
 Response via : Initial Calibration
 Integrator: ChemStation

Volume Inj. : 2 µl
 Signal #1 Phase : ZB-MR1 Signal #2 Phase: ZB-MR2
 Signal #1 Info : 30Mx0.32mmx 0.50µ Signal #2 Info : 30M x 0.32mm x 0.25µm

Compound	RT#1	RT#2	Resp#1	Resp#2	ng/ml	ng/ml

System Monitoring Compounds						
1) SA Tetrachlo...	4.501	3.796	40035066	34479224	19.910	21.572
2) SA Decachlor...	10.201	8.814	32148516	24128104	19.734	22.792
Target Compounds						
3) L1 AR-1016-1	5.653	4.878	9042139	8357226	120.428	136.046
4) L1 AR-1016-2	5.674	4.896	13710327	11994706	128.144	136.631
5) L1 AR-1016-3	5.737	5.072	9669022	9272179	147.472	194.571 #
6) L1 AR-1016-4	5.834	5.114	9174183	9459537	172.220	248.639 #
7) L1 AR-1016-5	6.126	5.328	14039574	18764578	287.054	376.614 #
8) L2 AR-1221-1	4.704	4.014	1200172	174697	45.909	6.516 #
9) L2 AR-1221-2	4.773	4.096	193517	1474485	9.486	71.804 #
10) L2 AR-1221-3	4.864	4.168	1008306	1411375	16.666	23.967 #
11) L3 AR-1232-1	4.864	4.168	1008306	1411375	21.404	32.562 #
12) L3 AR-1232-2	5.389	4.896	1958147	11994706	84.101	271.492 #
13) L3 AR-1232-3	5.674	5.072	13710327	9272179	273.861	396.533 #
14) L3 AR-1232-4	5.834	5.156	9174183	10497218	365.519	506.619 #
15) L3 AR-1232-5	5.924	5.328	9102942	18764578	519.588	810.410 #
16) L4 AR-1242-1	5.653	4.878	9042139	8357226	144.449	160.382
17) L4 AR-1242-2	5.674	4.896	13710327	11994706	157.990	163.202
18) L4 AR-1242-3	5.737	5.072	9669022	9272179	175.590	236.985 #
19) L4 AR-1242-4	5.834	5.156	9174183	10497218	206.863	279.309 #
20) L4 AR-1242-5	6.588	5.680	9855000	5106643	193.293	105.820 #
21) L5 AR-1248-1	5.653	4.878	9042139	8357226	186.839	192.911
22) L5 AR-1248-2	5.924	5.114	9102942	9459537	150.114	167.493
23) L5 AR-1248-3	6.126	5.156	14039574	10497218	212.142	177.597
24) L5 AR-1248-4	6.526	5.328	2526469	18764578	28.910	269.401 #
25) L5 AR-1248-5	6.588	5.719	9855000	2626212	118.698	37.657 #
26) L6 AR-1254-1	6.500	5.680	4144881	5106643	48.194	51.090
27) L6 AR-1254-2	6.719	5.829	3964039	1032776	30.335	11.966 #
28) L6 AR-1254-3	7.081	6.231	868072	1162046	6.576	9.035 #
29) L6 AR-1254-4	7.362	6.460	957428	1094360	7.336	12.830 #
30) L6 AR-1254-5	7.779	6.872	838072	1360577	7.533	12.003 #
31) L7 AR-1260-1	7.246	6.372	272121	552207	2.907	6.924 #
32) L7 AR-1260-2	7.501	6.551	854318	829437	5.954	8.178 #
33) L7 AR-1260-3	7.864	6.702	357702	210907	3.141	2.427
34) L7 AR-1260-4	8.061	7.175	1441379	756702	13.433	10.496
35) L7 AR-1260-5	8.397	7.413	943007	1441434	3.985	8.302 #
36) L8 AR-1262-1	8.061	6.911	1441379	856874	10.818	7.581 #
37) L8 AR-1262-2	8.397	7.175	943007	756702	3.462	7.791 #
38) L8 AR-1262-3	8.720	7.712	1308515	82125	7.053	1.007 #
39) L8 AR-1262-4	8.803	7.758	626073	583467	4.662	4.149
40) L8 AR-1262-5	9.436	8.206f	209767	89662	2.269	1.378 #
41) L9 AR-1268-1	8.720	7.693	1308515	270146	3.928	1.153 #

Data Path : Z:\pestpcbsrv\HPCHEM1\ECD_P\Data\PP052725\
 Data File : PP072382.D
 Signal(s) : Signal #1: ECD1A.ch Signal #2: ECD2B.ch
 Acq On : 27 May 2025 17:49
 Operator : YP\AJ
 Sample : Q2122-06
 Misc :
 ALS Vial : 19 Sample Multiplier: 1

Instrument :
 ECD_P
 ClientSampleId :

Integration File signal 1: autoint1.e
 Integration File signal 2: autoint2.e
 Quant Time: May 28 06:34:16 2025
 Quant Method : Z:\pestpcbsrv\HPCHEM1\ECD_P\methods\PP051925.M
 Quant Title : GC EXTRACTABLES
 QLast Update : Sat May 24 03:32:20 2025
 Response via : Initial Calibration
 Integrator: ChemStation

Volume Inj. : 2 µl
 Signal #1 Phase : ZB-MR1 Signal #2 Phase: ZB-MR2
 Signal #1 Info : 30Mx0.32mmx 0.50µ Signal #2 Info : 30M x 0.32mm x 0.25µm

	Compound	RT#1	RT#2	Resp#1	Resp#2	ng/ml	ng/ml
42)	L9 AR-1268-2	8.803	7.758	626073	583467	2.236	2.821 #
43)	L9 AR-1268-3	9.076f	7.972	731607	36184	3.030	0.214 #
44)	L9 AR-1268-4	9.436	8.206f	209767	89662	1.999	1.229 #
45)	L9 AR-1268-5	9.873	8.555	165248	143740	0.244	0.315 #

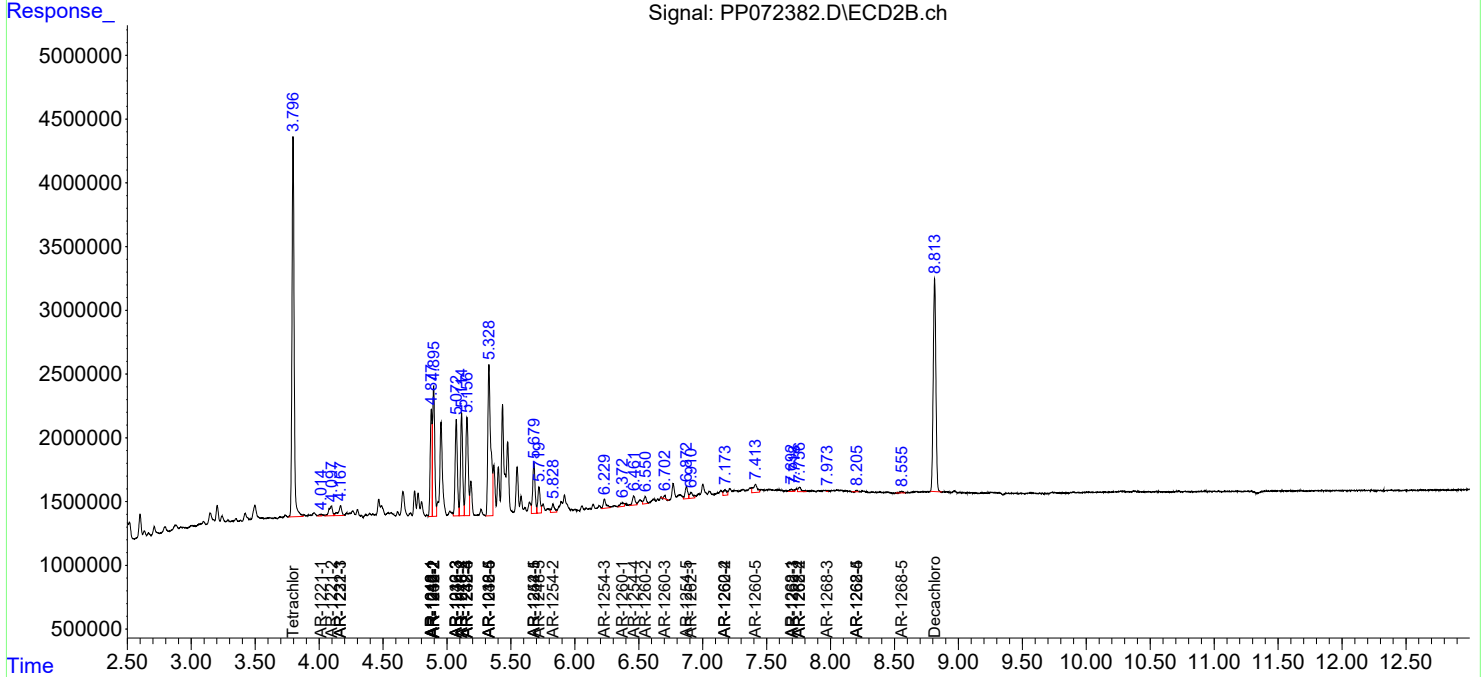
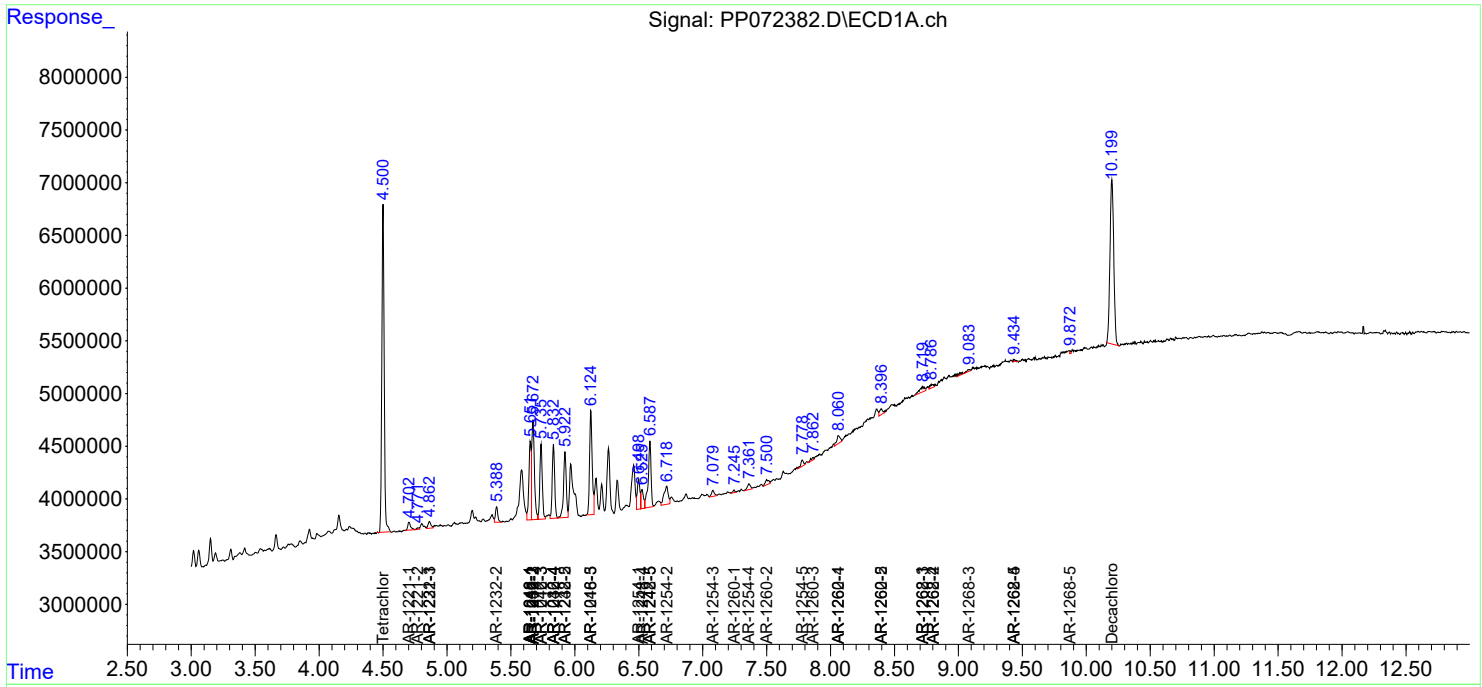
(f)=RT Delta > 1/2 Window (#)=Amounts differ by > 25% (m)=manual int.

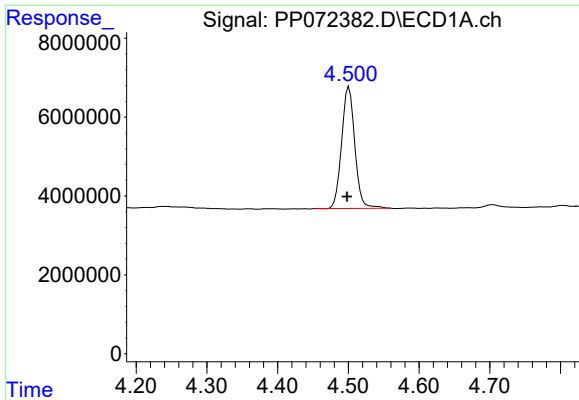
Data Path : Z:\pestpcbsrv\HPCHEM1\ECD_P\Data\PP052725\
 Data File : PP072382.D
 Signal(s) : Signal #1: ECD1A.ch Signal #2: ECD2B.ch
 Acq On : 27 May 2025 17:49
 Operator : YP\AJ
 Sample : Q2122-06
 Misc :
 ALS Vial : 19 Sample Multiplier: 1

Instrument :
 ECD_P
 ClientSampleId :

Integration File signal 1: autoint1.e
 Integration File signal 2: autoint2.e
 Quant Time: May 28 06:34:16 2025
 Quant Method : Z:\pestpcbsrv\HPCHEM1\ECD_P\methods\PP051925.M
 Quant Title : GC EXTRACTABLES
 QLast Update : Sat May 24 03:32:20 2025
 Response via : Initial Calibration
 Integrator: ChemStation

Volume Inj. : 2 µl
 Signal #1 Phase : ZB-MR1 Signal #2 Phase: ZB-MR2
 Signal #1 Info : 30Mx0.32mmx 0.50µ Signal #2 Info : 30M x 0.32mm x 0.25µm

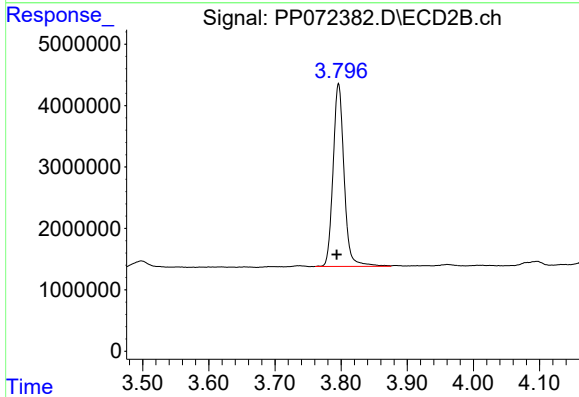




#1 Tetrachloro-m-xylene

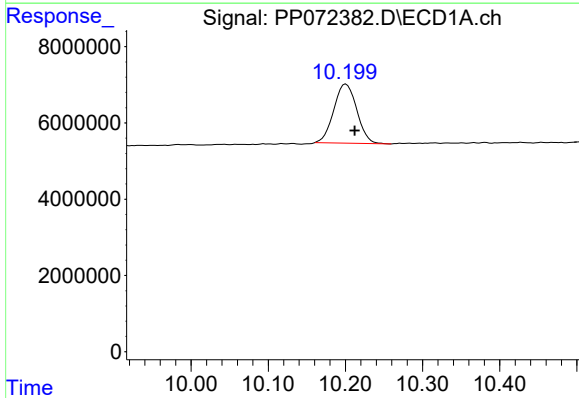
R.T.: 4.501 min
 Delta R.T.: 0.003 min
 Response: 40035066
 Conc: 19.91 ng/ml

Instrument :
 ECD_P
 ClientSampleId :



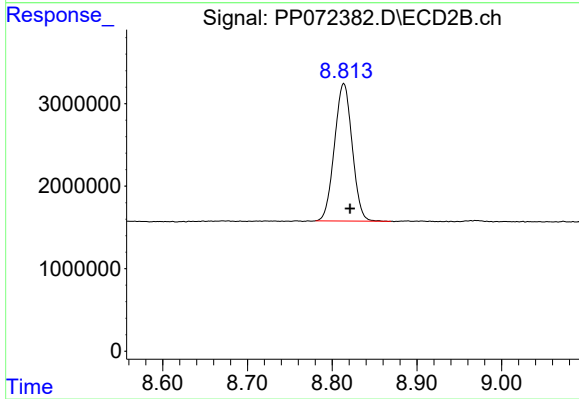
#1 Tetrachloro-m-xylene

R.T.: 3.796 min
 Delta R.T.: 0.003 min
 Response: 34479224
 Conc: 21.57 ng/ml



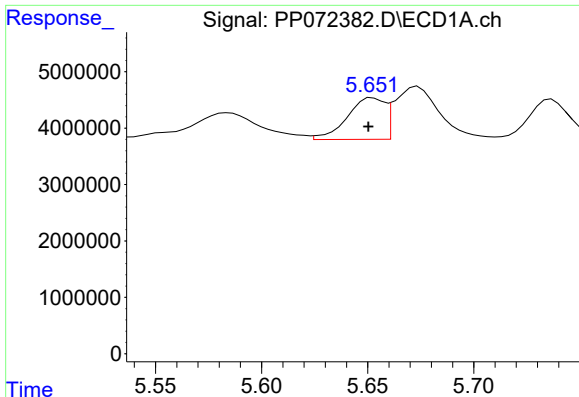
#2 Decachlorobiphenyl

R.T.: 10.201 min
 Delta R.T.: -0.011 min
 Response: 32148516
 Conc: 19.73 ng/ml



#2 Decachlorobiphenyl

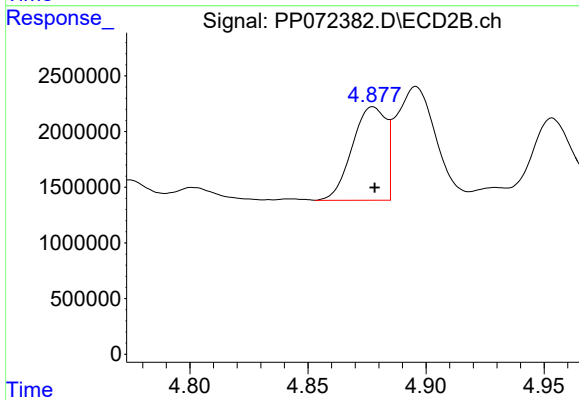
R.T.: 8.814 min
 Delta R.T.: -0.007 min
 Response: 24128104
 Conc: 22.79 ng/ml



#3 AR-1016-1

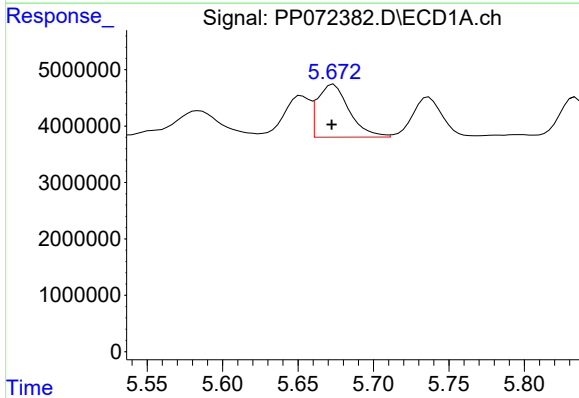
R.T.: 5.653 min
 Delta R.T.: 0.002 min
 Response: 9042139
 Conc: 120.43 ng/ml

Instrument :
 ECD_P
 ClientSampleId :



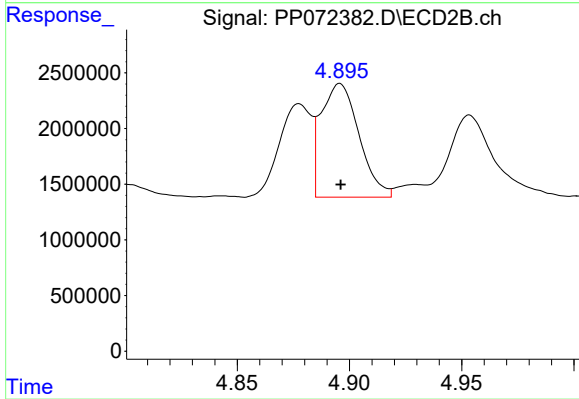
#3 AR-1016-1

R.T.: 4.878 min
 Delta R.T.: 0.000 min
 Response: 8357226
 Conc: 136.05 ng/ml



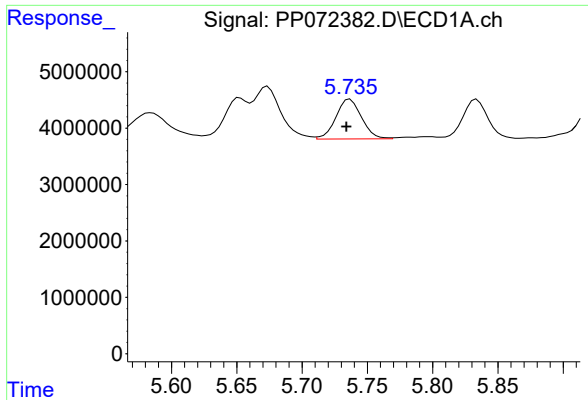
#4 AR-1016-2

R.T.: 5.674 min
 Delta R.T.: 0.001 min
 Response: 13710327
 Conc: 128.14 ng/ml



#4 AR-1016-2

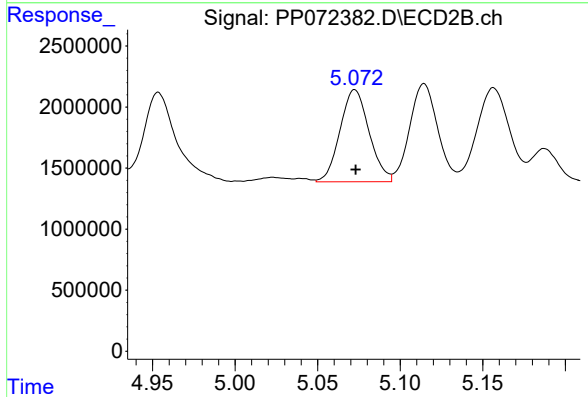
R.T.: 4.896 min
 Delta R.T.: 0.000 min
 Response: 11994706
 Conc: 136.63 ng/ml



#5 AR-1016-3

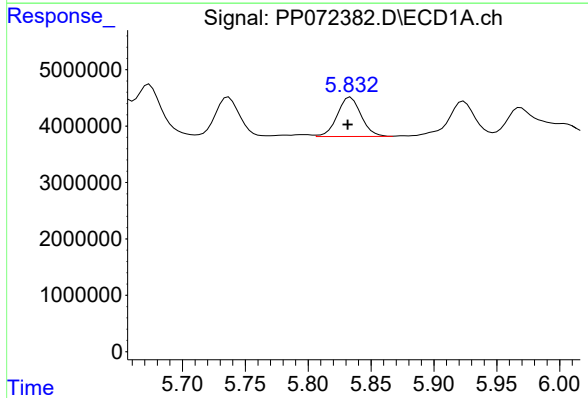
R.T.: 5.737 min
 Delta R.T.: 0.003 min
 Response: 9669022
 Conc: 147.47 ng/ml

Instrument :
 ECD_P
 ClientSampleId :



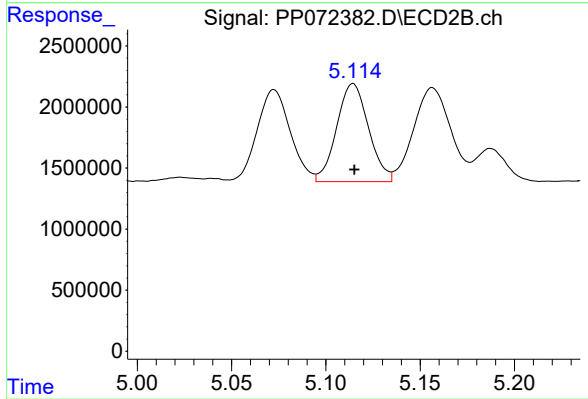
#5 AR-1016-3

R.T.: 5.072 min
 Delta R.T.: 0.000 min
 Response: 9272179
 Conc: 194.57 ng/ml



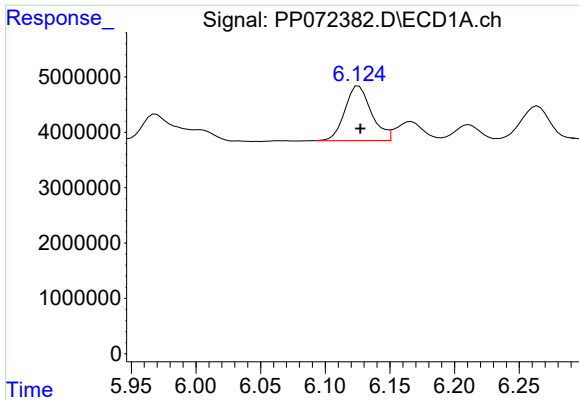
#6 AR-1016-4

R.T.: 5.834 min
 Delta R.T.: 0.002 min
 Response: 9174183
 Conc: 172.22 ng/ml



#6 AR-1016-4

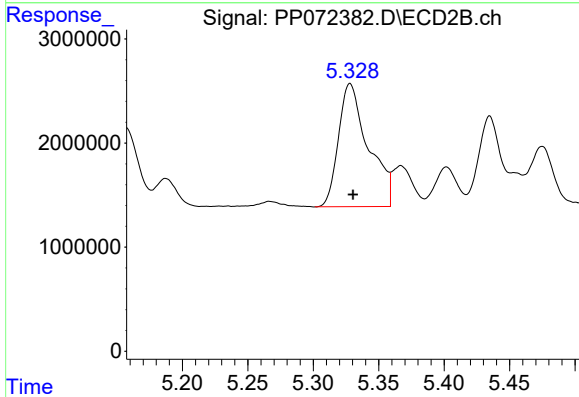
R.T.: 5.114 min
 Delta R.T.: 0.000 min
 Response: 9459537
 Conc: 248.64 ng/ml



#7 AR-1016-5

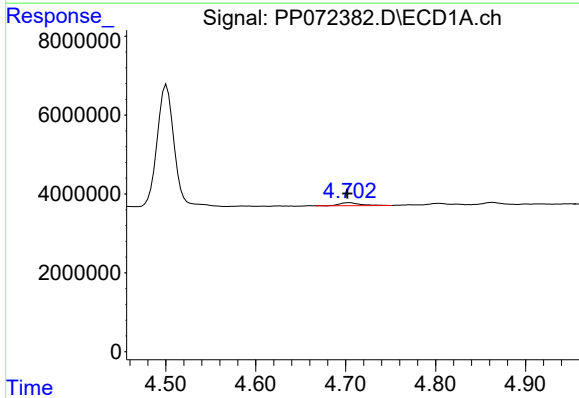
R.T.: 6.126 min
 Delta R.T.: -0.001 min
 Response: 14039574
 Conc: 287.05 ng/ml

Instrument :
 ECD_P
 ClientSampleId :



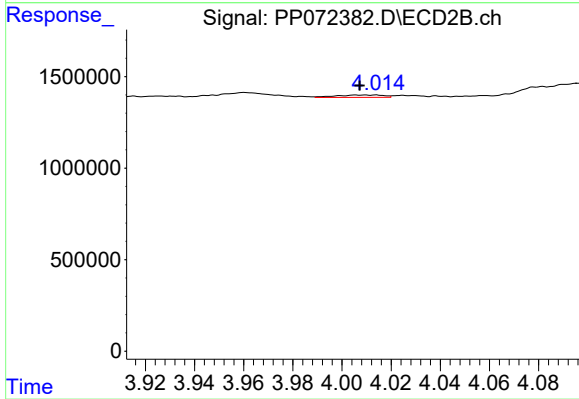
#7 AR-1016-5

R.T.: 5.328 min
 Delta R.T.: -0.002 min
 Response: 18764578
 Conc: 376.61 ng/ml



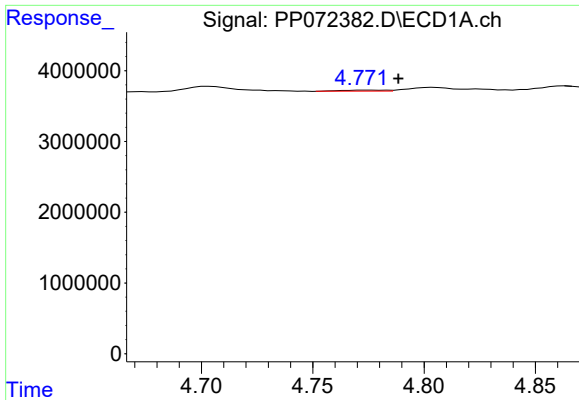
#8 AR-1221-1

R.T.: 4.704 min
 Delta R.T.: 0.002 min
 Response: 1200172
 Conc: 45.91 ng/ml



#8 AR-1221-1

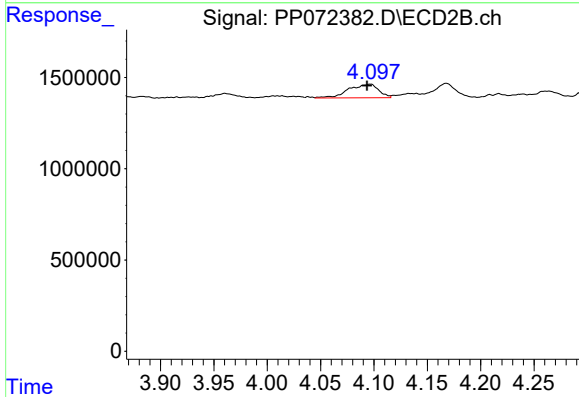
R.T.: 4.014 min
 Delta R.T.: 0.006 min
 Response: 174697
 Conc: 6.52 ng/ml



#9 AR-1221-2

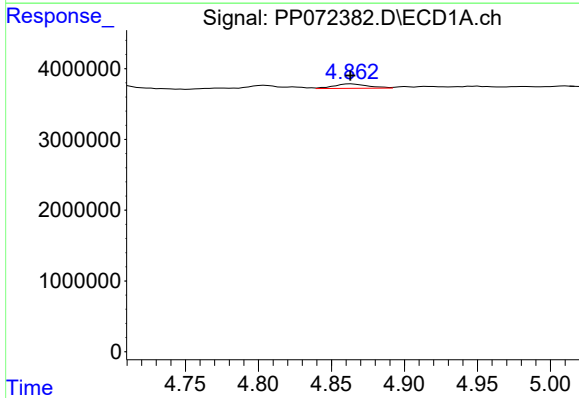
R.T.: 4.773 min
 Delta R.T.: -0.015 min
 Response: 193517
 Conc: 9.49 ng/ml

Instrument :
 ECD_P
 ClientSampleId :



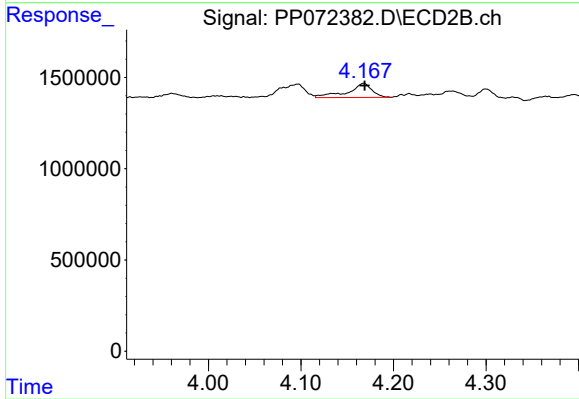
#9 AR-1221-2

R.T.: 4.096 min
 Delta R.T.: 0.003 min
 Response: 1474485
 Conc: 71.80 ng/ml



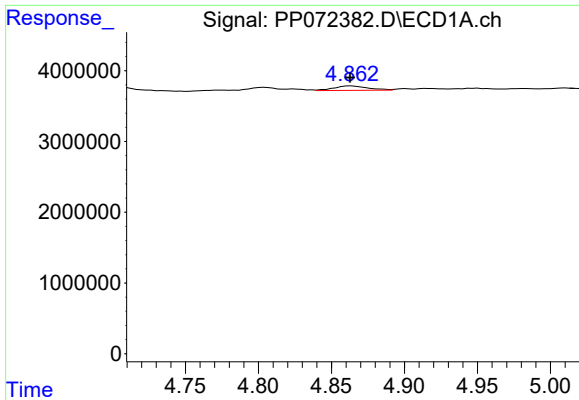
#10 AR-1221-3

R.T.: 4.864 min
 Delta R.T.: 0.000 min
 Response: 1008306
 Conc: 16.67 ng/ml



#10 AR-1221-3

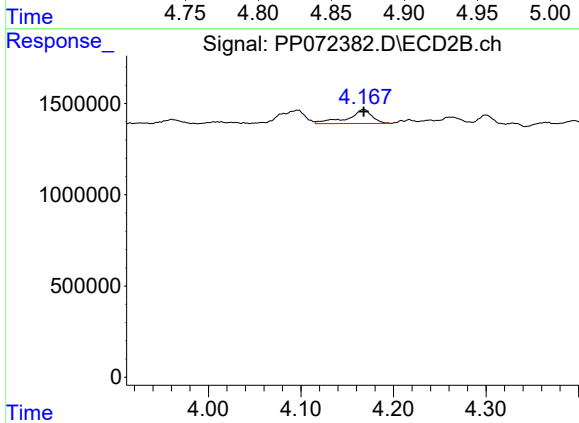
R.T.: 4.168 min
 Delta R.T.: -0.001 min
 Response: 1411375
 Conc: 23.97 ng/ml



#11 AR-1232-1

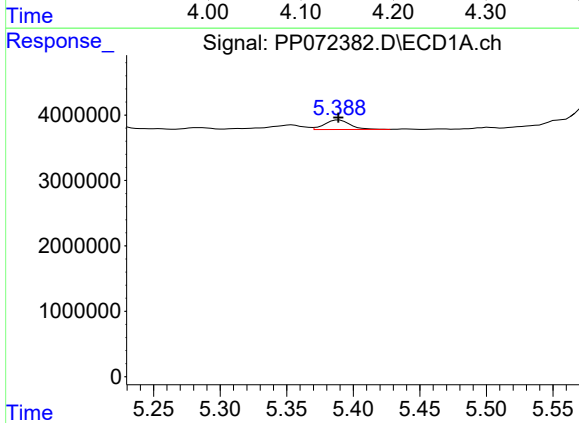
R.T.: 4.864 min
 Delta R.T.: 0.001 min
 Response: 1008306
 Conc: 21.40 ng/ml

Instrument :
 ECD_P
 ClientSampleId :



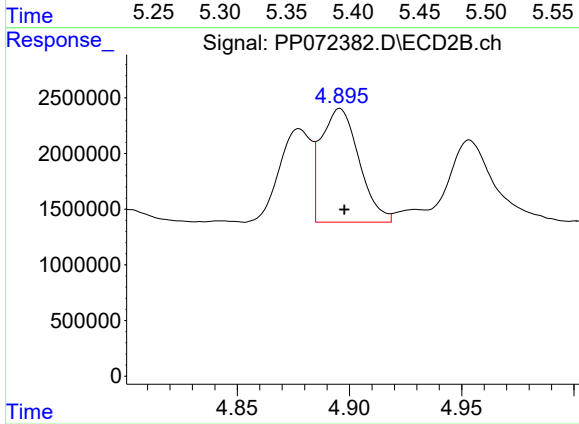
#11 AR-1232-1

R.T.: 4.168 min
 Delta R.T.: 0.000 min
 Response: 1411375
 Conc: 32.56 ng/ml



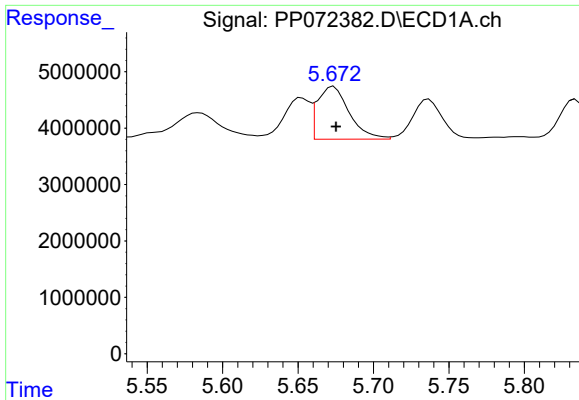
#12 AR-1232-2

R.T.: 5.389 min
 Delta R.T.: 0.000 min
 Response: 1958147
 Conc: 84.10 ng/ml



#12 AR-1232-2

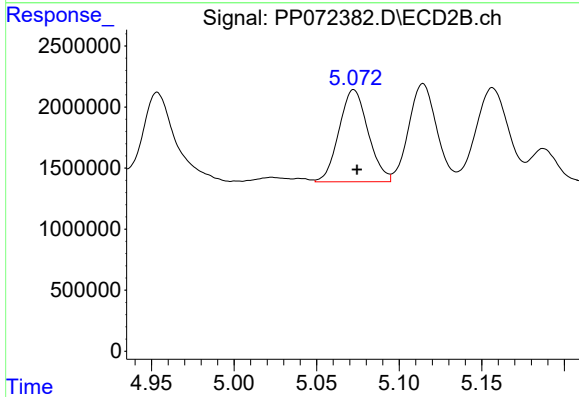
R.T.: 4.896 min
 Delta R.T.: -0.002 min
 Response: 11994706
 Conc: 271.49 ng/ml



#13 AR-1232-3

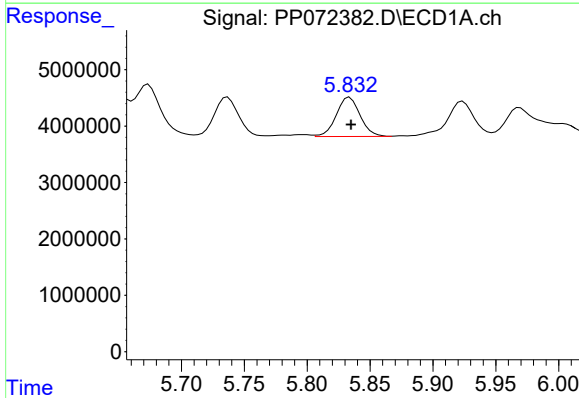
R.T.: 5.674 min
 Delta R.T.: -0.002 min
 Response: 13710327
 Conc: 273.86 ng/ml

Instrument :
 ECD_P
 ClientSampleId :



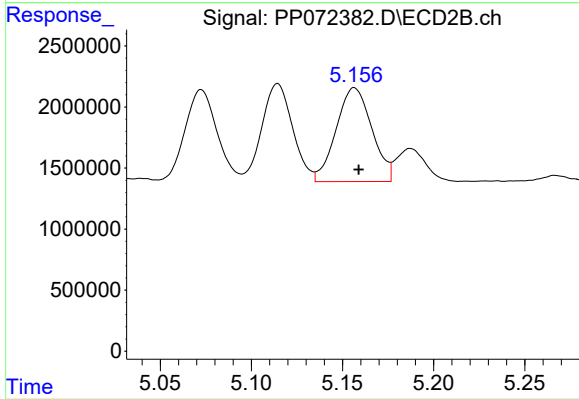
#13 AR-1232-3

R.T.: 5.072 min
 Delta R.T.: -0.002 min
 Response: 9272179
 Conc: 396.53 ng/ml



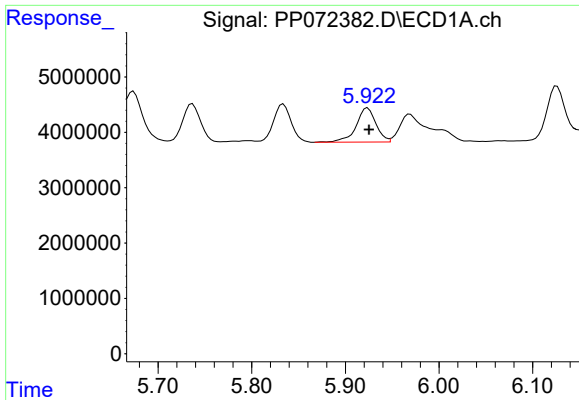
#14 AR-1232-4

R.T.: 5.834 min
 Delta R.T.: -0.001 min
 Response: 9174183
 Conc: 365.52 ng/ml



#14 AR-1232-4

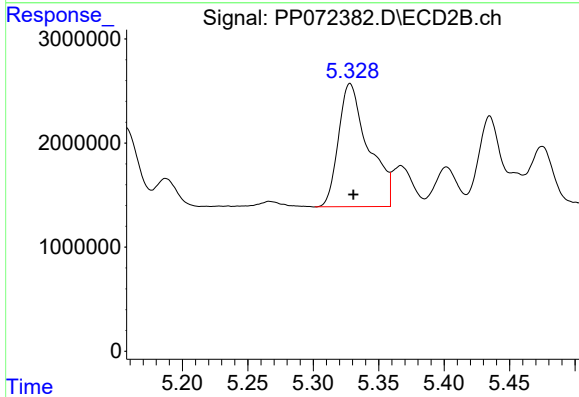
R.T.: 5.156 min
 Delta R.T.: -0.002 min
 Response: 10497218
 Conc: 506.62 ng/ml



#15 AR-1232-5

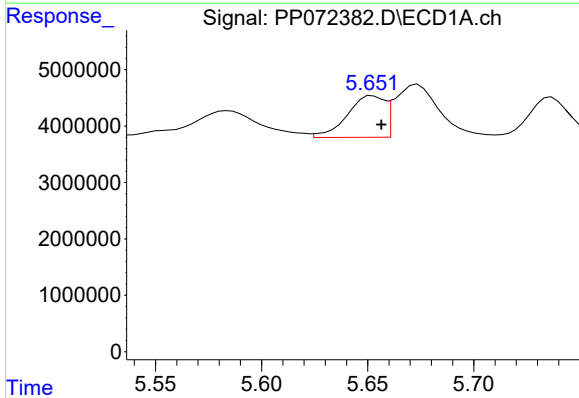
R.T.: 5.924 min
 Delta R.T.: -0.001 min
 Response: 9102942
 Conc: 519.59 ng/ml

Instrument :
 ECD_P
 ClientSampleId :



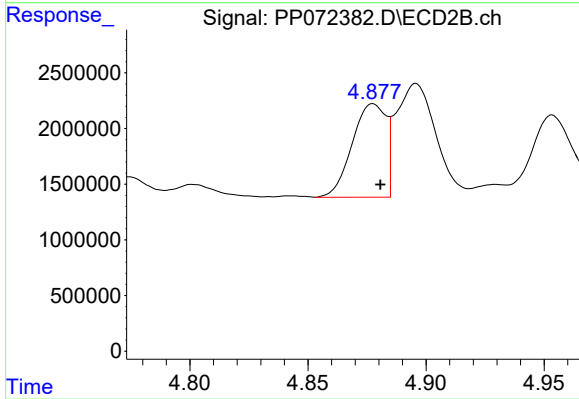
#15 AR-1232-5

R.T.: 5.328 min
 Delta R.T.: -0.003 min
 Response: 18764578
 Conc: 810.41 ng/ml



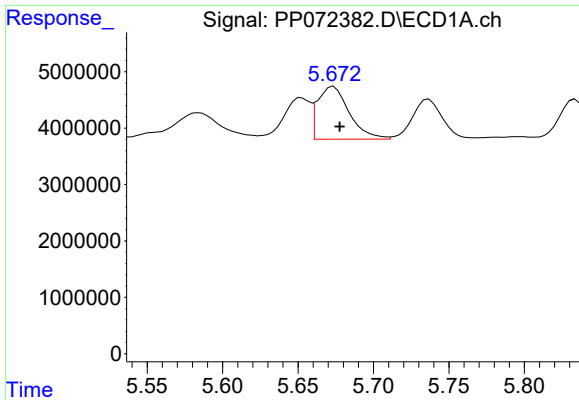
#16 AR-1242-1

R.T.: 5.653 min
 Delta R.T.: -0.004 min
 Response: 9042139
 Conc: 144.45 ng/ml



#16 AR-1242-1

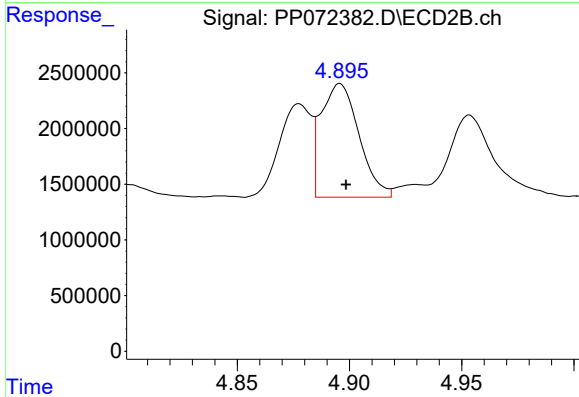
R.T.: 4.878 min
 Delta R.T.: -0.003 min
 Response: 8357226
 Conc: 160.38 ng/ml



#17 AR-1242-2

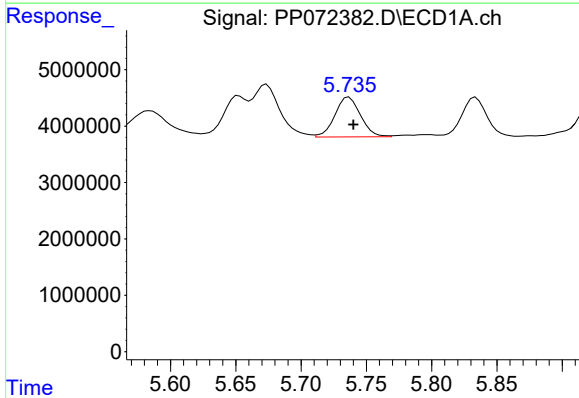
R.T.: 5.674 min
 Delta R.T.: -0.004 min
 Response: 13710327
 Conc: 157.99 ng/ml

Instrument :
 ECD_P
 ClientSampleId :



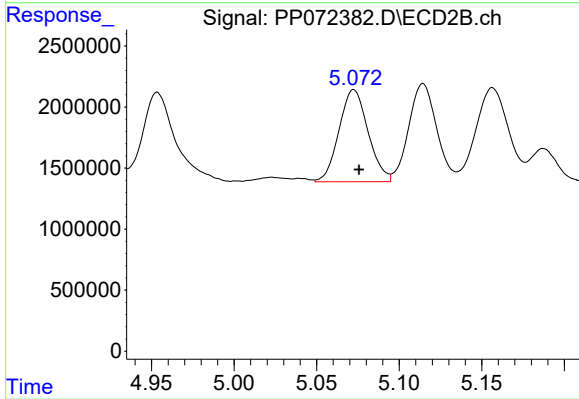
#17 AR-1242-2

R.T.: 4.896 min
 Delta R.T.: -0.003 min
 Response: 11994706
 Conc: 163.20 ng/ml



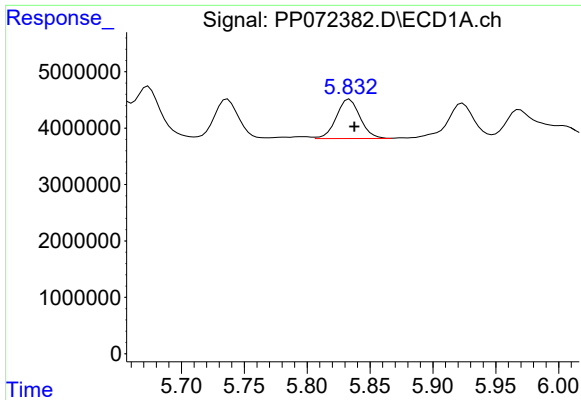
#18 AR-1242-3

R.T.: 5.737 min
 Delta R.T.: -0.003 min
 Response: 9669022
 Conc: 175.59 ng/ml



#18 AR-1242-3

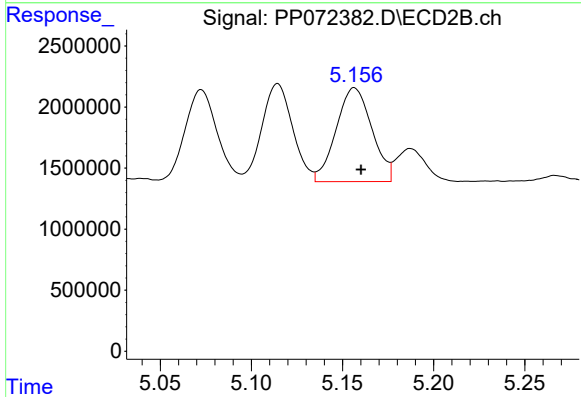
R.T.: 5.072 min
 Delta R.T.: -0.003 min
 Response: 9272179
 Conc: 236.99 ng/ml



#19 AR-1242-4

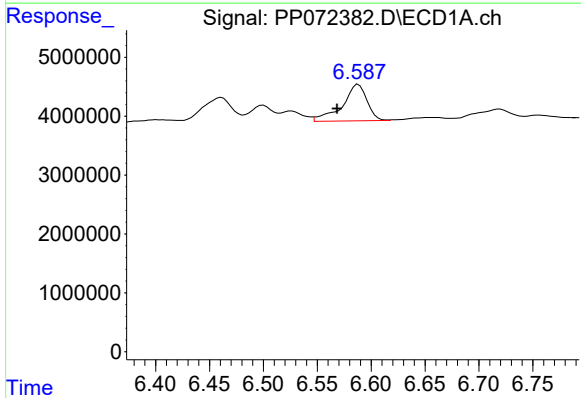
R.T.: 5.834 min
 Delta R.T.: -0.004 min
 Response: 9174183
 Conc: 206.86 ng/ml

Instrument :
 ECD_P
 ClientSampleId :



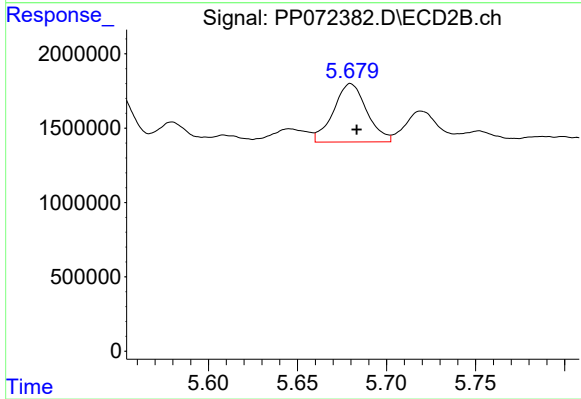
#19 AR-1242-4

R.T.: 5.156 min
 Delta R.T.: -0.004 min
 Response: 10497218
 Conc: 279.31 ng/ml



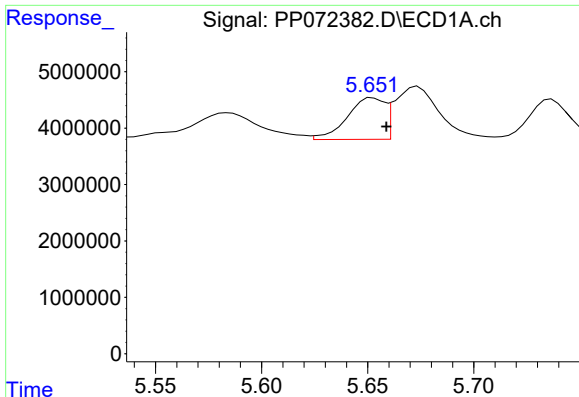
#20 AR-1242-5

R.T.: 6.588 min
 Delta R.T.: 0.020 min
 Response: 9855000
 Conc: 193.29 ng/ml



#20 AR-1242-5

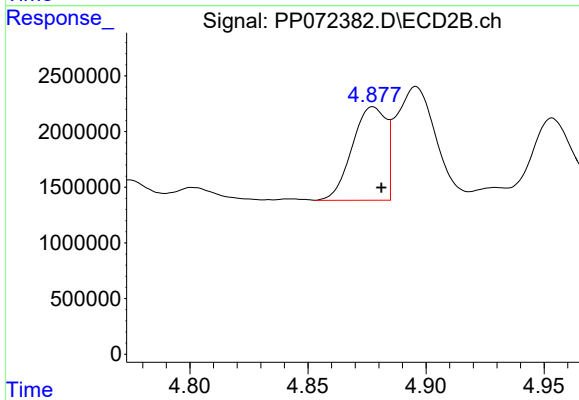
R.T.: 5.680 min
 Delta R.T.: -0.003 min
 Response: 5106643
 Conc: 105.82 ng/ml



#21 AR-1248-1

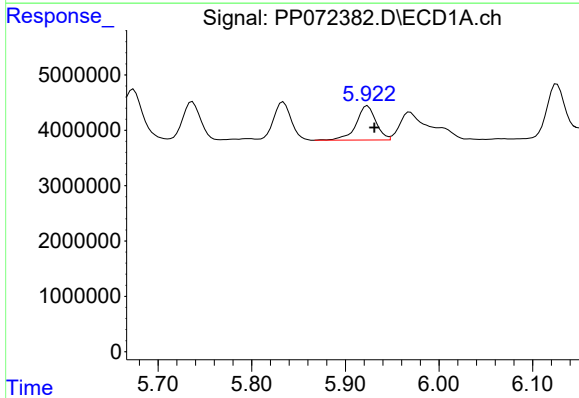
R.T.: 5.653 min
 Delta R.T.: -0.006 min
 Response: 9042139
 Conc: 186.84 ng/ml

Instrument :
 ECD_P
 ClientSampleId :



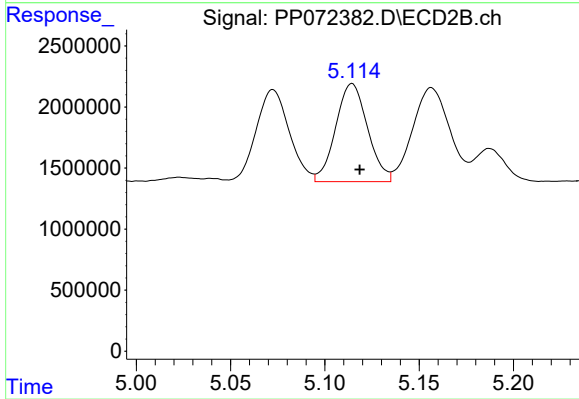
#21 AR-1248-1

R.T.: 4.878 min
 Delta R.T.: -0.004 min
 Response: 8357226
 Conc: 192.91 ng/ml



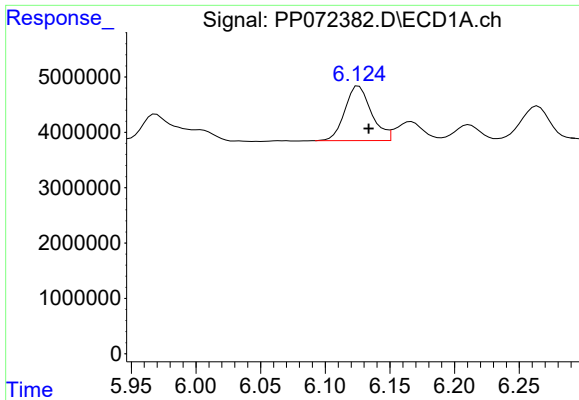
#22 AR-1248-2

R.T.: 5.924 min
 Delta R.T.: -0.007 min
 Response: 9102942
 Conc: 150.11 ng/ml



#22 AR-1248-2

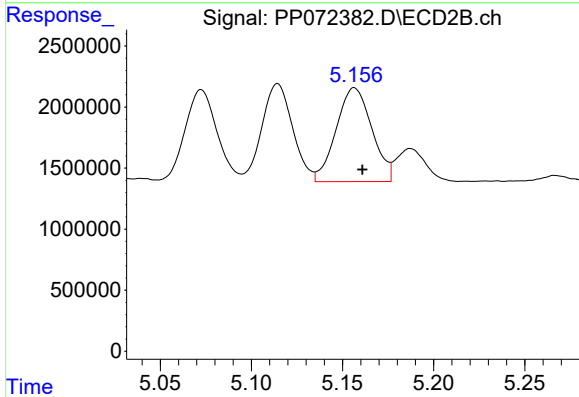
R.T.: 5.114 min
 Delta R.T.: -0.004 min
 Response: 9459537
 Conc: 167.49 ng/ml



#23 AR-1248-3

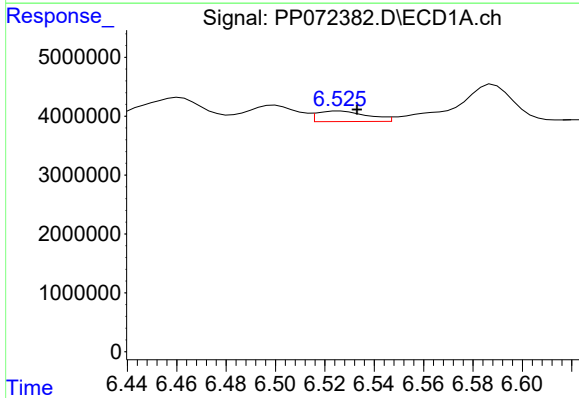
R.T.: 6.126 min
 Delta R.T.: -0.008 min
 Response: 14039574
 Conc: 212.14 ng/ml

Instrument :
 ECD_P
 ClientSampleId :



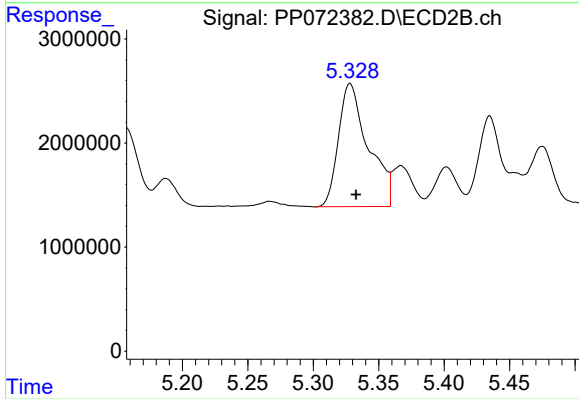
#23 AR-1248-3

R.T.: 5.156 min
 Delta R.T.: -0.004 min
 Response: 10497218
 Conc: 177.60 ng/ml



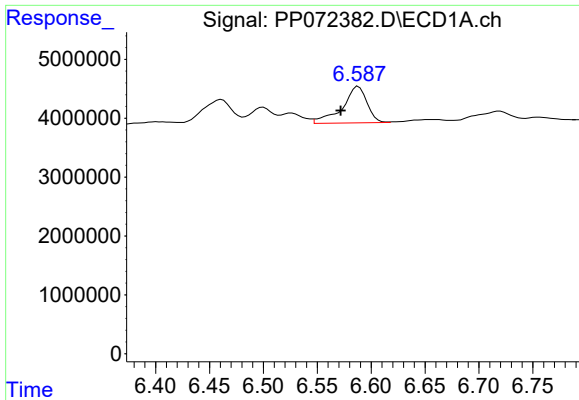
#24 AR-1248-4

R.T.: 6.526 min
 Delta R.T.: -0.007 min
 Response: 2526469
 Conc: 28.91 ng/ml



#24 AR-1248-4

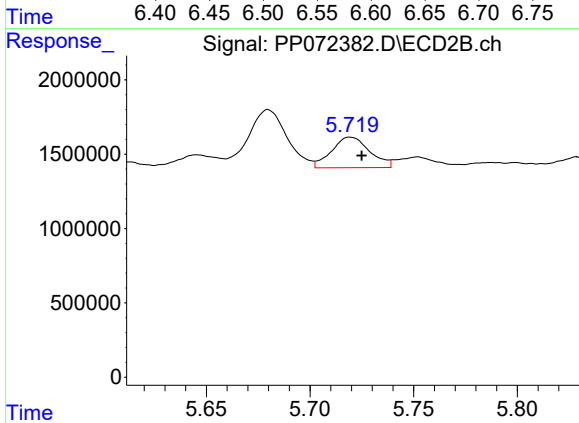
R.T.: 5.328 min
 Delta R.T.: -0.005 min
 Response: 18764578
 Conc: 269.40 ng/ml



#25 AR-1248-5

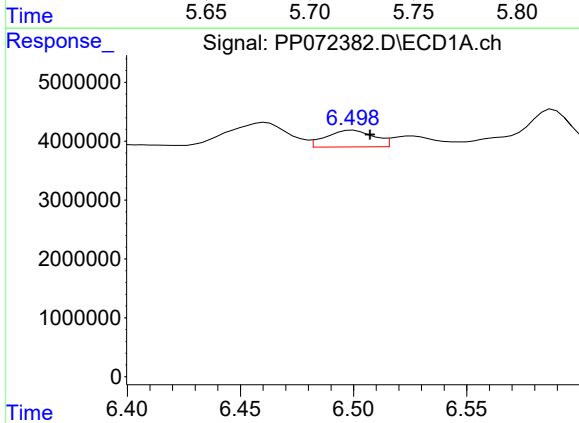
R.T.: 6.588 min
 Delta R.T.: 0.016 min
 Response: 9855000
 Conc: 118.70 ng/ml

Instrument :
 ECD_P
 ClientSampleId :



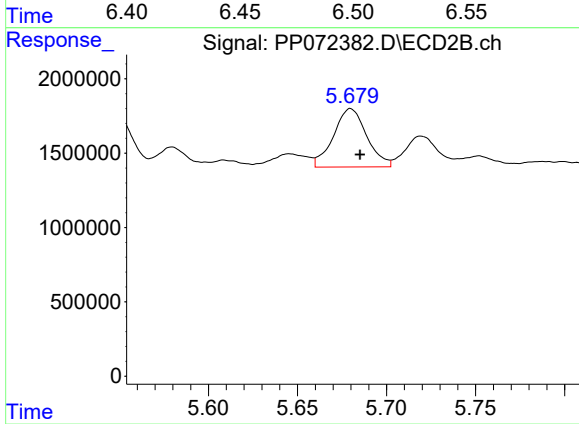
#25 AR-1248-5

R.T.: 5.719 min
 Delta R.T.: -0.006 min
 Response: 2626212
 Conc: 37.66 ng/ml



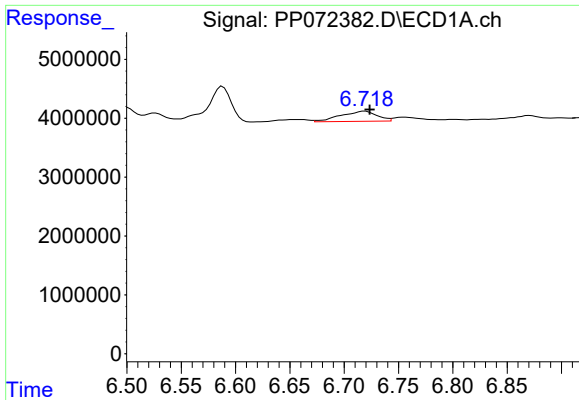
#26 AR-1254-1

R.T.: 6.500 min
 Delta R.T.: -0.007 min
 Response: 4144881
 Conc: 48.19 ng/ml



#26 AR-1254-1

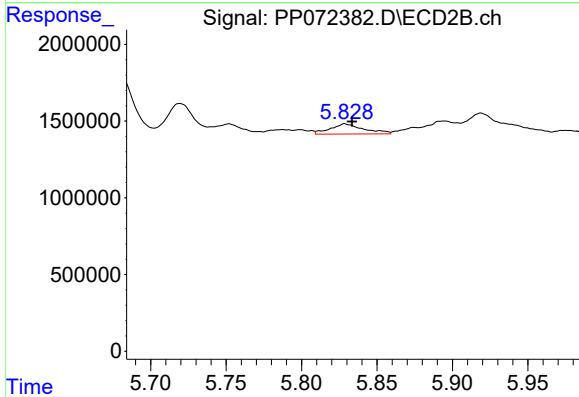
R.T.: 5.680 min
 Delta R.T.: -0.005 min
 Response: 5106643
 Conc: 51.09 ng/ml



#27 AR-1254-2

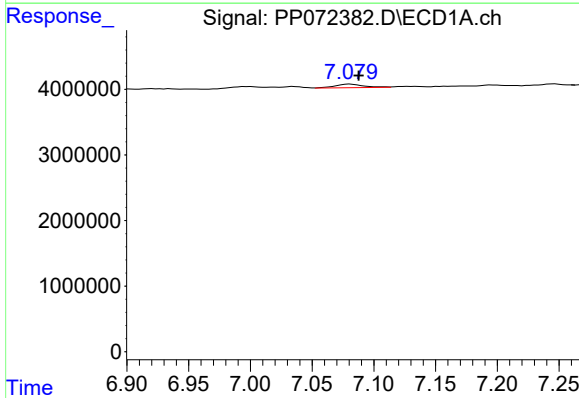
R.T.: 6.719 min
 Delta R.T.: -0.004 min
 Response: 3964039
 Conc: 30.33 ng/ml

Instrument :
 ECD_P
 ClientSampleId :



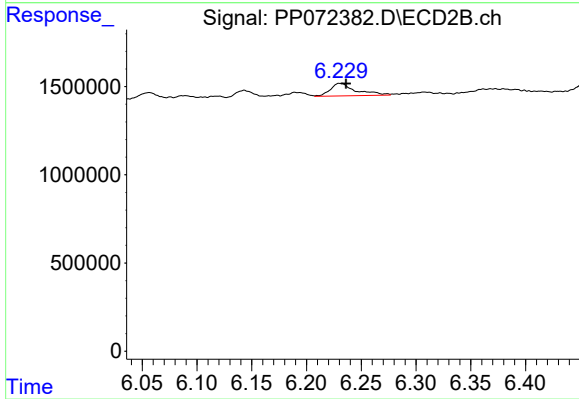
#27 AR-1254-2

R.T.: 5.829 min
 Delta R.T.: -0.005 min
 Response: 1032776
 Conc: 11.97 ng/ml



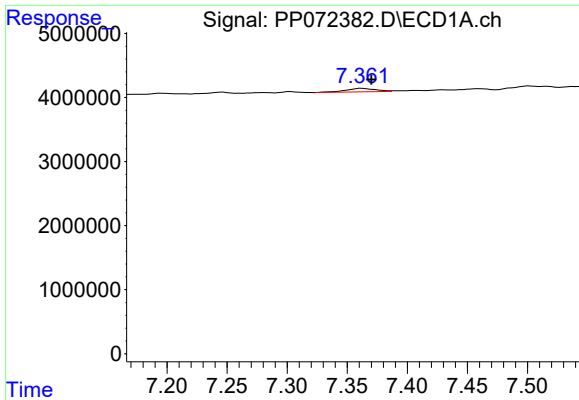
#28 AR-1254-3

R.T.: 7.081 min
 Delta R.T.: -0.007 min
 Response: 868072
 Conc: 6.58 ng/ml



#28 AR-1254-3

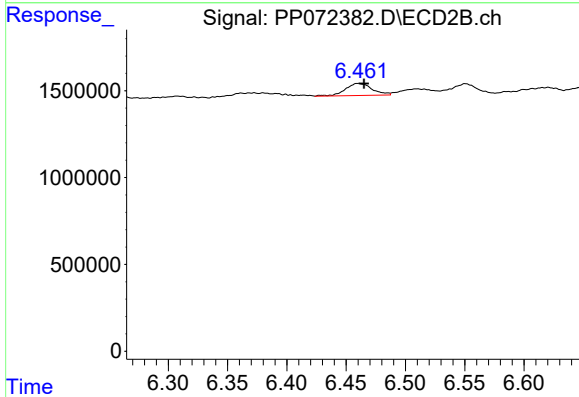
R.T.: 6.231 min
 Delta R.T.: -0.005 min
 Response: 1162046
 Conc: 9.03 ng/ml



#29 AR-1254-4

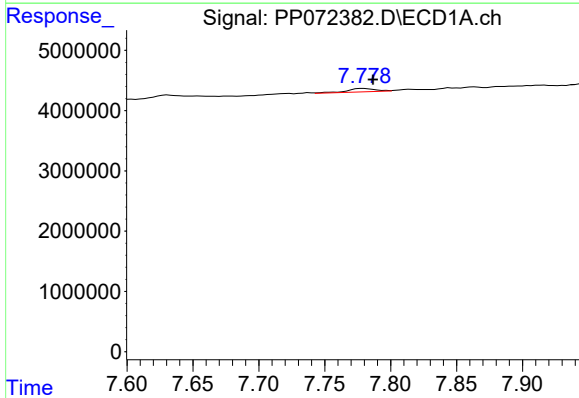
R.T.: 7.362 min
 Delta R.T.: -0.008 min
 Response: 957428
 Conc: 7.34 ng/ml

Instrument :
 ECD_P
 ClientSampleId :



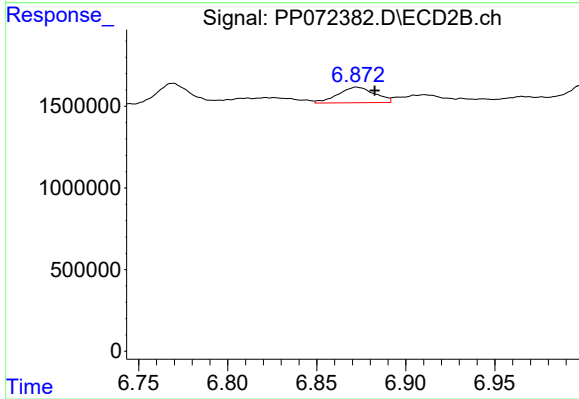
#29 AR-1254-4

R.T.: 6.460 min
 Delta R.T.: -0.005 min
 Response: 1094360
 Conc: 12.83 ng/ml



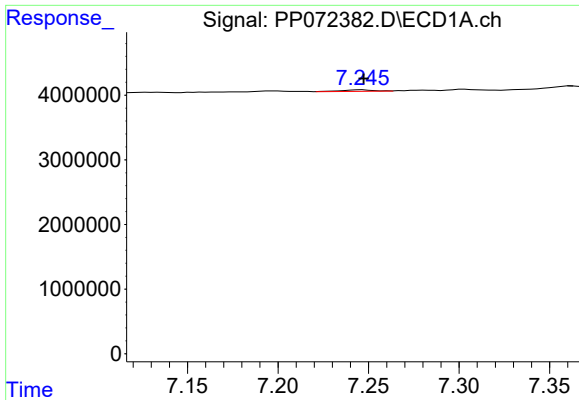
#30 AR-1254-5

R.T.: 7.779 min
 Delta R.T.: -0.007 min
 Response: 838072
 Conc: 7.53 ng/ml



#30 AR-1254-5

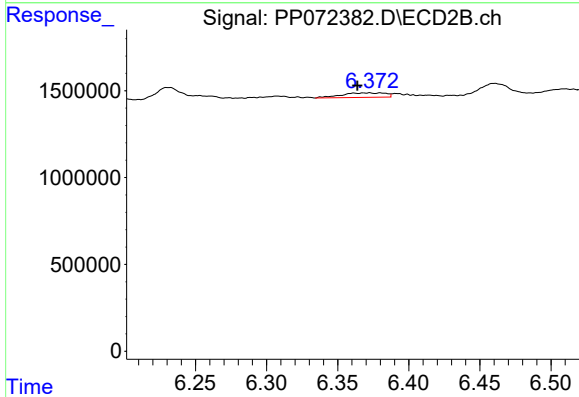
R.T.: 6.872 min
 Delta R.T.: -0.010 min
 Response: 1360577
 Conc: 12.00 ng/ml



#31 AR-1260-1

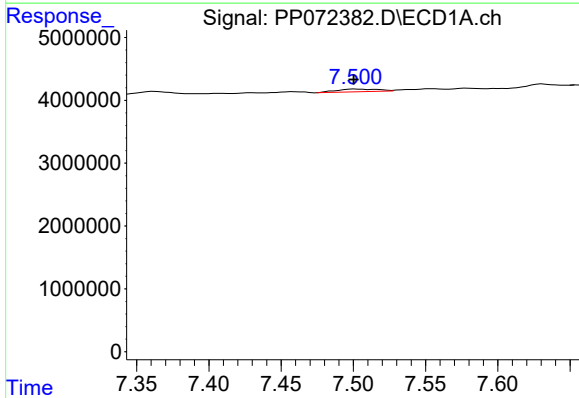
R.T.: 7.246 min
 Delta R.T.: 0.000 min
 Response: 272121
 Conc: 2.91 ng/ml

Instrument :
 ECD_P
 ClientSampleId :



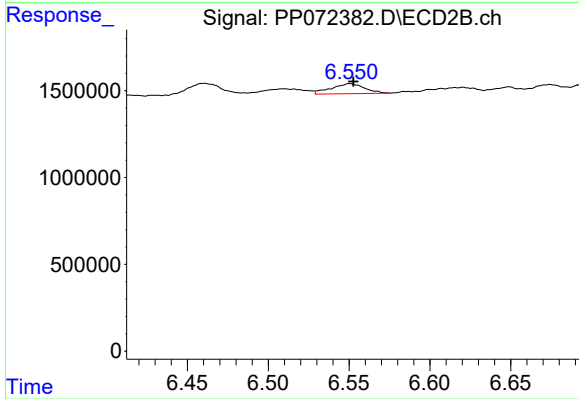
#31 AR-1260-1

R.T.: 6.372 min
 Delta R.T.: 0.008 min
 Response: 552207
 Conc: 6.92 ng/ml



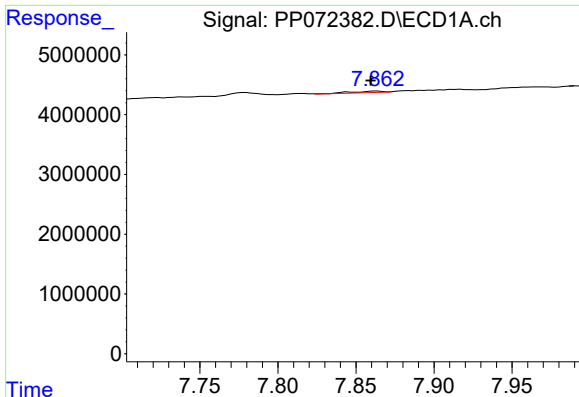
#32 AR-1260-2

R.T.: 7.501 min
 Delta R.T.: 0.000 min
 Response: 854318
 Conc: 5.95 ng/ml



#32 AR-1260-2

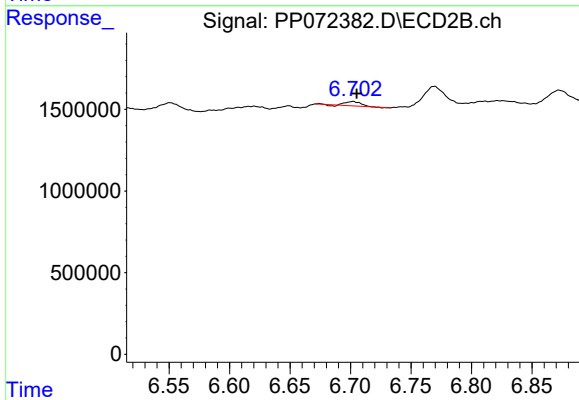
R.T.: 6.551 min
 Delta R.T.: -0.002 min
 Response: 829437
 Conc: 8.18 ng/ml



#33 AR-1260-3

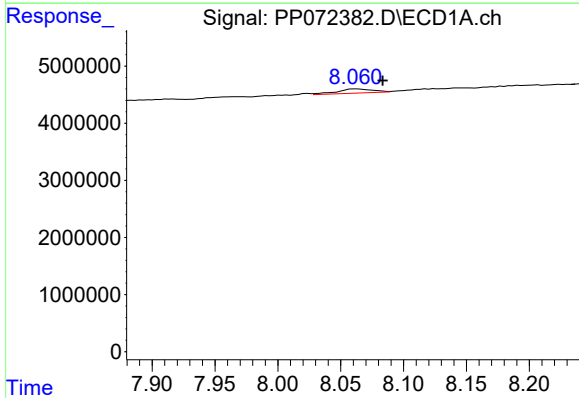
R.T.: 7.864 min
 Delta R.T.: 0.004 min
 Response: 357702
 Conc: 3.14 ng/ml

Instrument :
 ECD_P
 ClientSampleId :



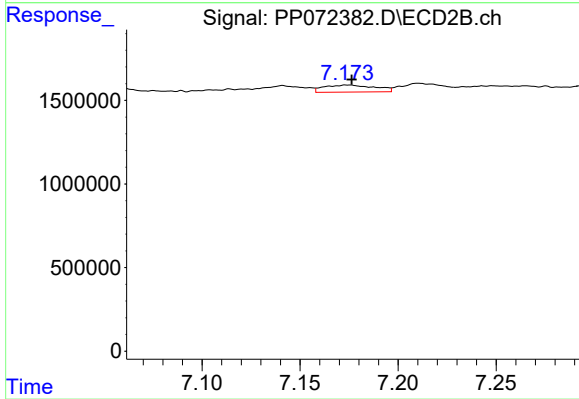
#33 AR-1260-3

R.T.: 6.702 min
 Delta R.T.: -0.003 min
 Response: 210907
 Conc: 2.43 ng/ml



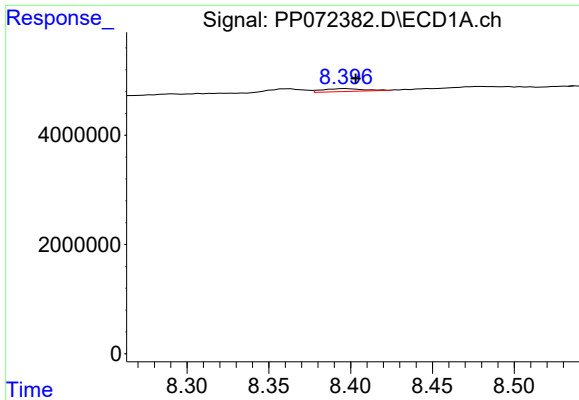
#34 AR-1260-4

R.T.: 8.061 min
 Delta R.T.: -0.022 min
 Response: 1441379
 Conc: 13.43 ng/ml



#34 AR-1260-4

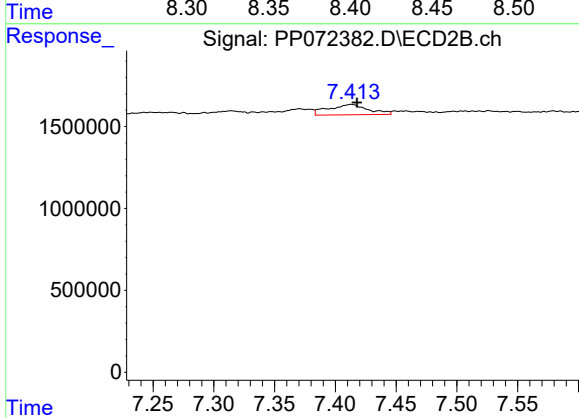
R.T.: 7.175 min
 Delta R.T.: -0.002 min
 Response: 756702
 Conc: 10.50 ng/ml



#35 AR-1260-5

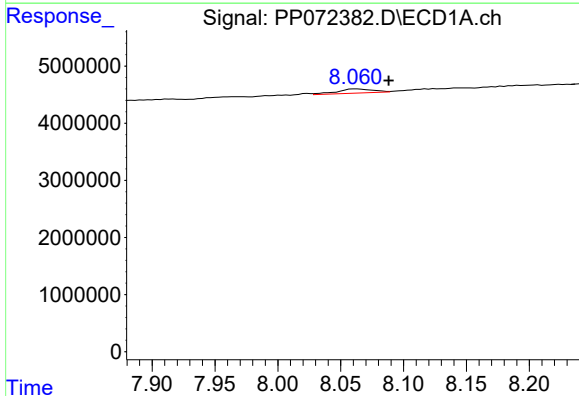
R.T.: 8.397 min
 Delta R.T.: -0.006 min
 Response: 943007
 Conc: 3.98 ng/ml

Instrument :
 ECD_P
 ClientSampleId :



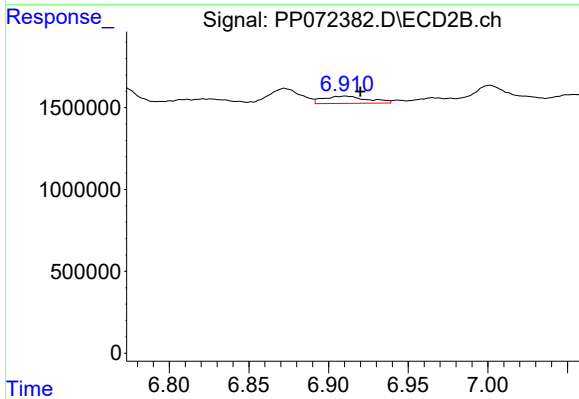
#35 AR-1260-5

R.T.: 7.413 min
 Delta R.T.: -0.005 min
 Response: 1441434
 Conc: 8.30 ng/ml



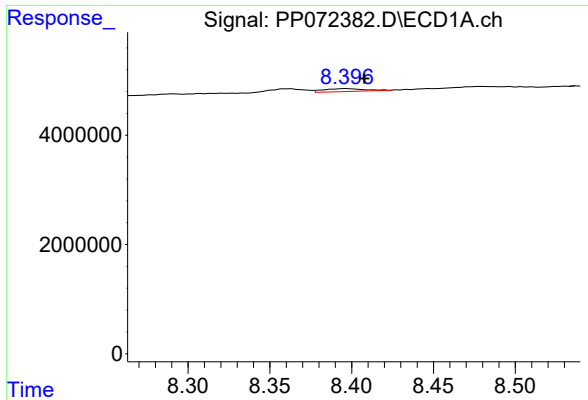
#36 AR-1262-1

R.T.: 8.061 min
 Delta R.T.: -0.027 min
 Response: 1441379
 Conc: 10.82 ng/ml



#36 AR-1262-1

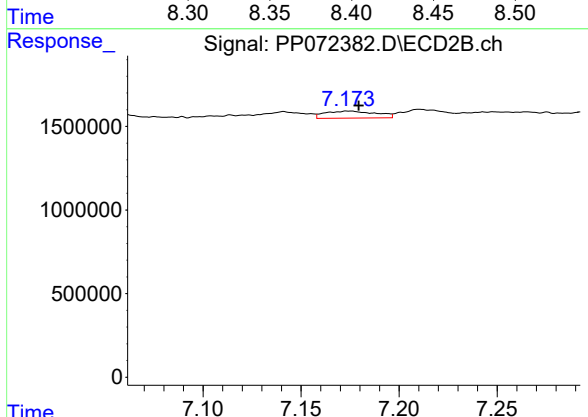
R.T.: 6.911 min
 Delta R.T.: -0.010 min
 Response: 856874
 Conc: 7.58 ng/ml



#37 AR-1262-2

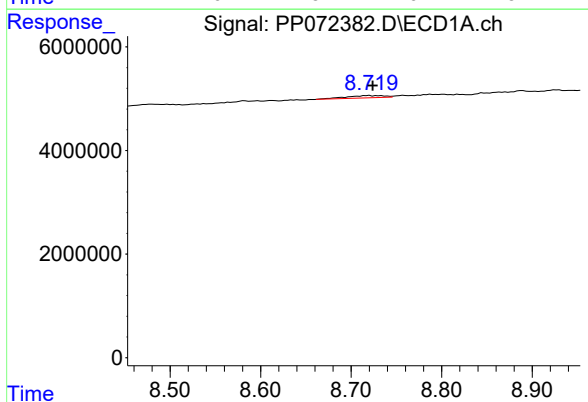
R.T.: 8.397 min
 Delta R.T.: -0.011 min
 Response: 943007
 Conc: 3.46 ng/ml

Instrument :
 ECD_P
 ClientSampleId :



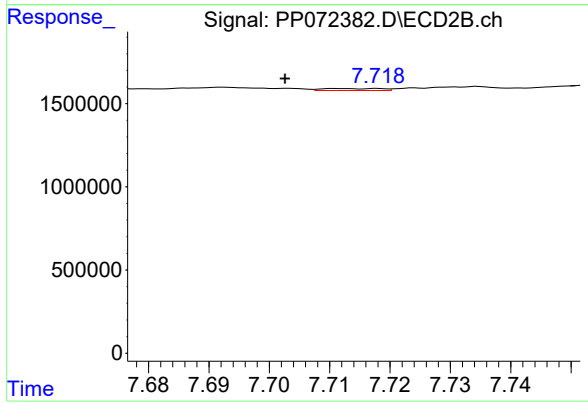
#37 AR-1262-2

R.T.: 7.175 min
 Delta R.T.: -0.005 min
 Response: 756702
 Conc: 7.79 ng/ml



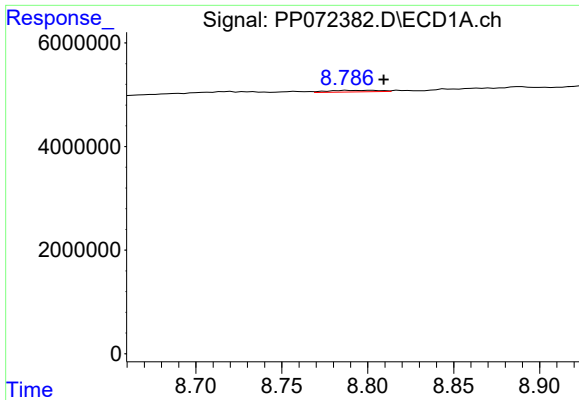
#38 AR-1262-3

R.T.: 8.720 min
 Delta R.T.: -0.004 min
 Response: 1308515
 Conc: 7.05 ng/ml



#38 AR-1262-3

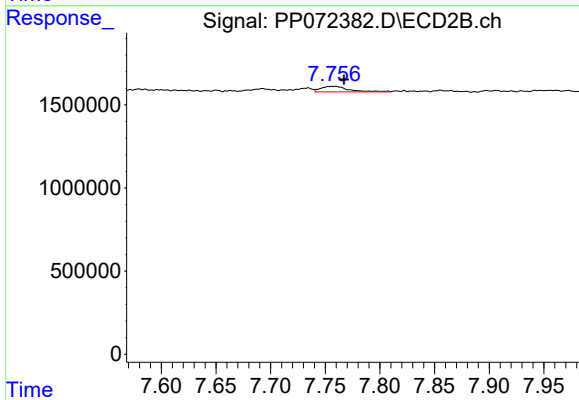
R.T.: 7.712 min
 Delta R.T.: 0.009 min
 Response: 82125
 Conc: 1.01 ng/ml



#39 AR-1262-4

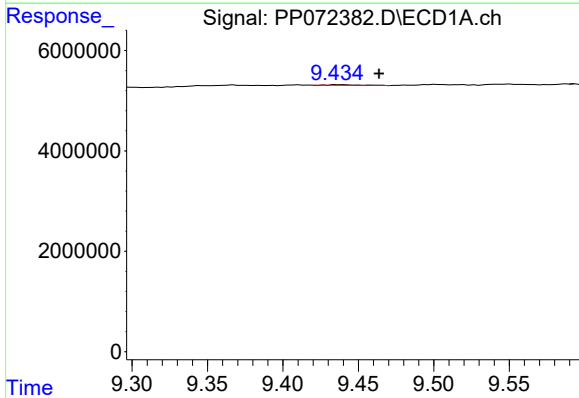
R.T.: 8.803 min
 Delta R.T.: -0.007 min
 Response: 626073
 Conc: 4.66 ng/ml

Instrument :
 ECD_P
 ClientSampleId :



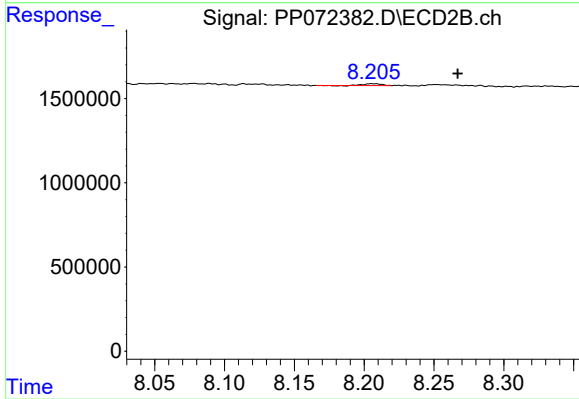
#39 AR-1262-4

R.T.: 7.758 min
 Delta R.T.: -0.009 min
 Response: 583467
 Conc: 4.15 ng/ml



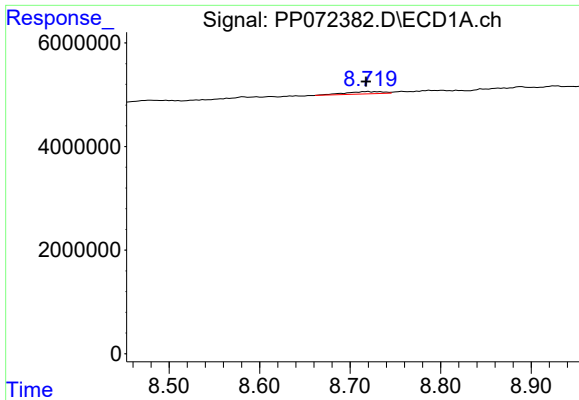
#40 AR-1262-5

R.T.: 9.436 min
 Delta R.T.: -0.028 min
 Response: 209767
 Conc: 2.27 ng/ml



#40 AR-1262-5

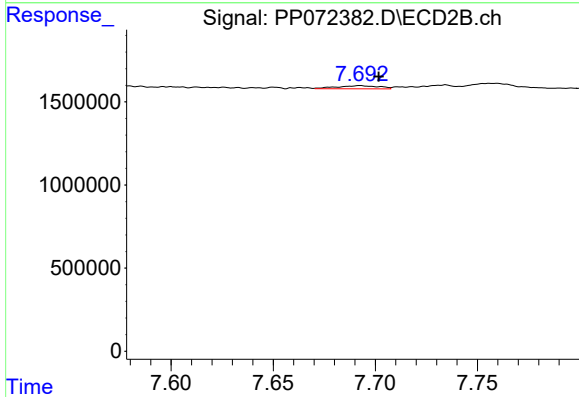
R.T.: 8.206 min
 Delta R.T.: -0.061 min
 Response: 89662
 Conc: 1.38 ng/ml



#41 AR-1268-1

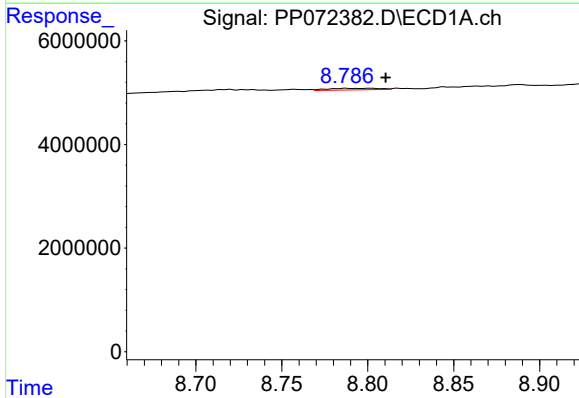
R.T.: 8.720 min
 Delta R.T.: 0.002 min
 Response: 1308515
 Conc: 3.93 ng/ml

Instrument :
 ECD_P
 ClientSampleId :



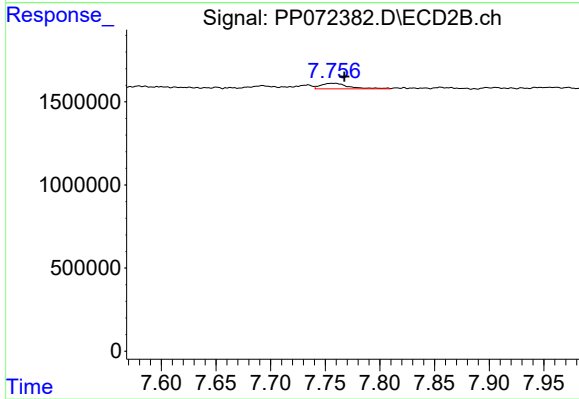
#41 AR-1268-1

R.T.: 7.693 min
 Delta R.T.: -0.009 min
 Response: 270146
 Conc: 1.15 ng/ml



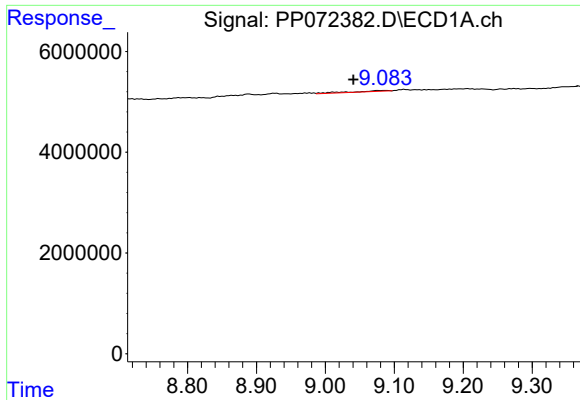
#42 AR-1268-2

R.T.: 8.803 min
 Delta R.T.: -0.008 min
 Response: 626073
 Conc: 2.24 ng/ml



#42 AR-1268-2

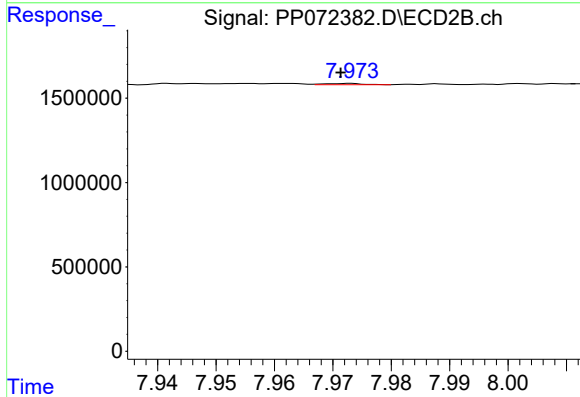
R.T.: 7.758 min
 Delta R.T.: -0.009 min
 Response: 583467
 Conc: 2.82 ng/ml



#43 AR-1268-3

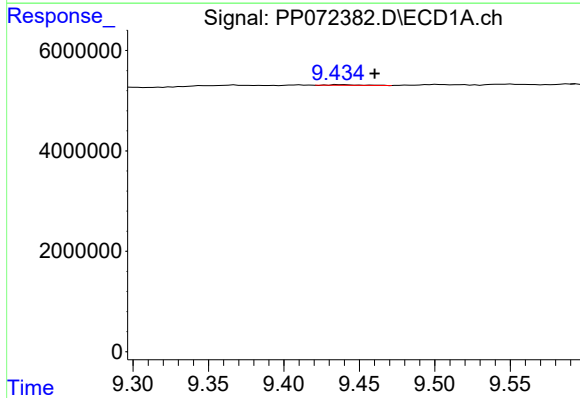
R.T.: 9.076 min
 Delta R.T.: 0.035 min
 Response: 731607
 Conc: 3.03 ng/ml

Instrument :
 ECD_P
 ClientSampleId :



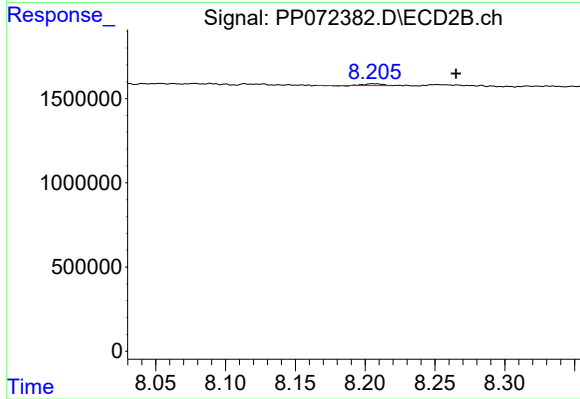
#43 AR-1268-3

R.T.: 7.972 min
 Delta R.T.: 0.001 min
 Response: 36184
 Conc: 0.21 ng/ml



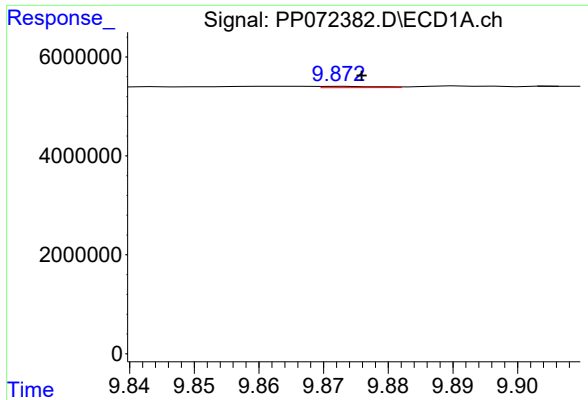
#44 AR-1268-4

R.T.: 9.436 min
 Delta R.T.: -0.024 min
 Response: 209767
 Conc: 2.00 ng/ml



#44 AR-1268-4

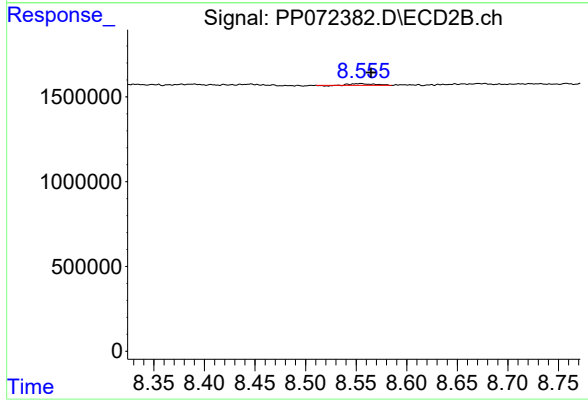
R.T.: 8.206 min
 Delta R.T.: -0.059 min
 Response: 89662
 Conc: 1.23 ng/ml



#45 AR-1268-5

R.T.: 9.873 min
 Delta R.T.: -0.003 min
 Response: 165248
 Conc: 0.24 ng/ml

Instrument :
 ECD_P
 ClientSampleId :



#45 AR-1268-5

R.T.: 8.555 min
 Delta R.T.: -0.010 min
 Response: 143740
 Conc: 0.31 ng/ml