

Data Path : Z:\pestpcbsrv\HPCHEM1\ECD_P\Data\PP052725\
 Data File : PP072362.D
 Signal(s) : Signal #1: ECD1A.ch Signal #2: ECD2B.ch
 Acq On : 27 May 2025 09:21
 Operator : YP\AJ
 Sample : AR1248CCC500
 Misc :
 ALS Vial : 5 Sample Multiplier: 1

Instrument :
 ECD_P
ClientSampleId :
 AR1248CCC500

Manual Integrations
APPROVED
 Reviewed By :Yogesh Patel 05/28/2025
 Supervised By :mohammad ahmed 05/30/2025

Integration File signal 1: autoint1.e
 Integration File signal 2: autoint2.e
 Quant Time: May 27 11:13:01 2025
 Quant Method : Z:\pestpcbsrv\HPCHEM1\ECD_P\methods\PP051925.M
 Quant Title : GC EXTRACTABLES
 QLast Update : Sat May 24 03:32:20 2025
 Response via : Initial Calibration
 Integrator: ChemStation

Volume Inj. : 2 µl
 Signal #1 Phase : ZB-MR1 Signal #2 Phase: ZB-MR2
 Signal #1 Info : 30Mx0.32mmx 0.50µ Signal #2 Info : 30M x 0.32mm x 0.25µm

Compound	RT#1	RT#2	Resp#1	Resp#2	ng/ml	ng/ml

System Monitoring Compounds						
1) SA Tetrachlo...	4.498	3.796	99696096	81901777	49.580	51.241
2) SA Decachlor...	10.195	8.812	82569683	54080228	50.683m	51.086
Target Compounds						
21) L5 AR-1248-1	5.650	4.878	22517374	21502091	465.279	496.336
22) L5 AR-1248-2	5.920	5.114	29781329	28516019	491.116	504.911
23) L5 AR-1248-3	6.123	5.156	33362594	29637172	504.118	501.415
24) L5 AR-1248-4	6.522	5.328	41816265	34776347	478.490	499.281
25) L5 AR-1248-5	6.561	5.720	39438403	34362205	475.014	492.723

(f)=RT Delta > 1/2 Window (#)=Amounts differ by > 25% (m)=manual int.

Data Path : Z:\pestpcbsrv\HPCHEM1\ECD_P\Data\PP052725\
 Data File : PP072362.D
 Signal(s) : Signal #1: ECD1A.ch Signal #2: ECD2B.ch
 Acq On : 27 May 2025 09:21
 Operator : YP\AJ
 Sample : AR1248CCC500
 Misc :
 ALS Vial : 5 Sample Multiplier: 1

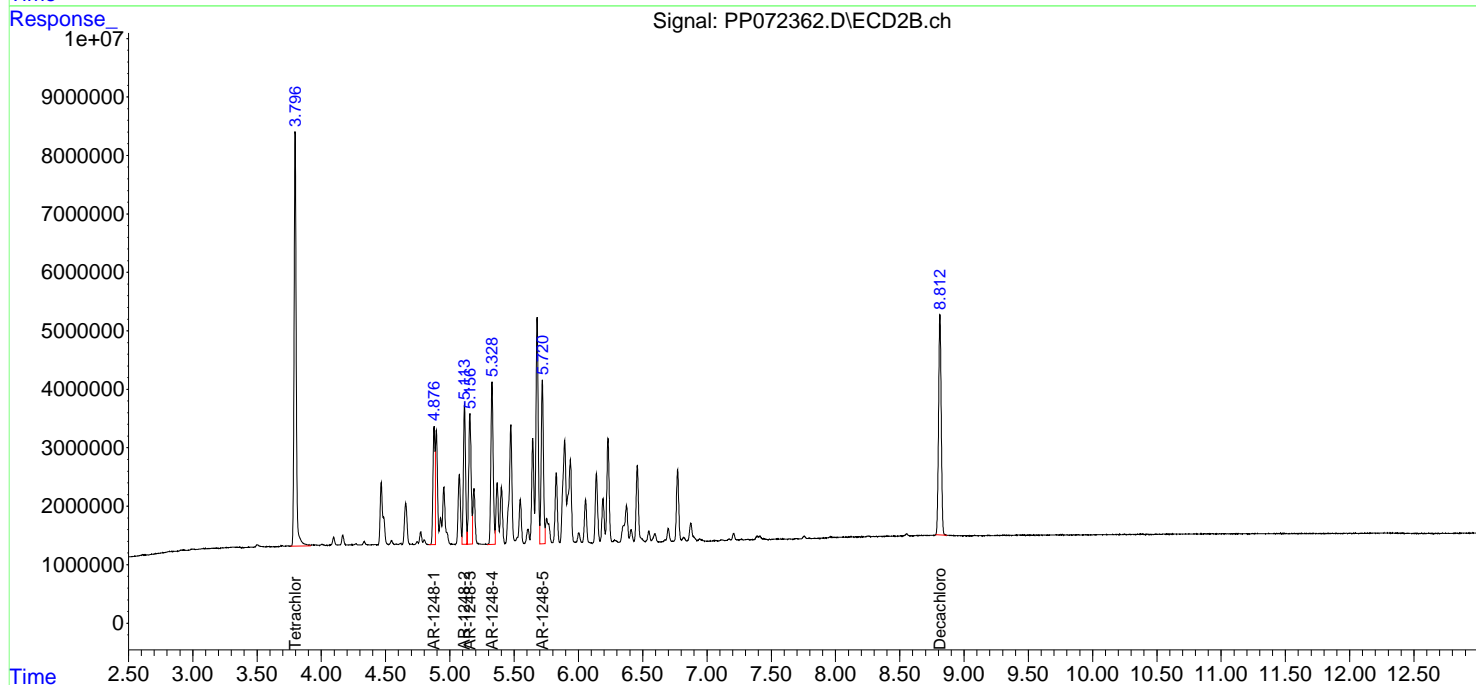
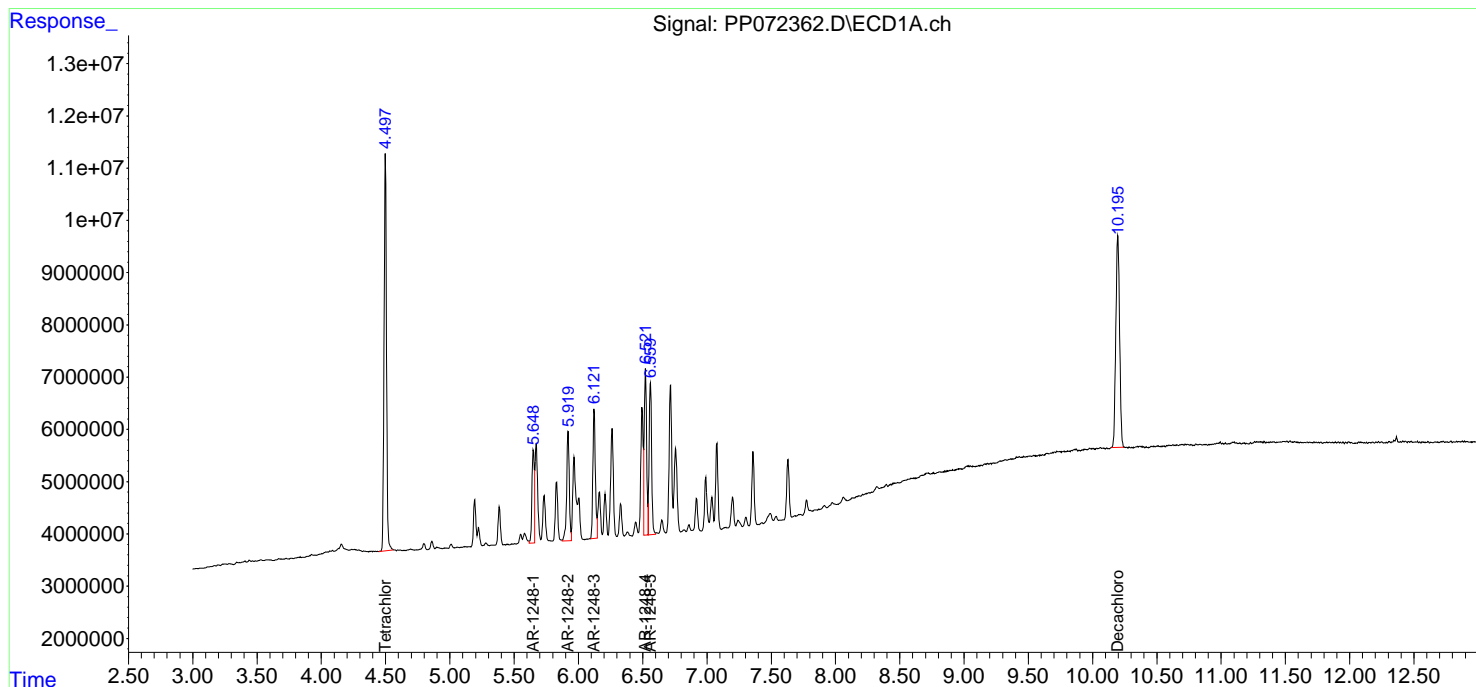
Instrument :
 ECD_P
ClientSampleId :
 AR1248CCC500

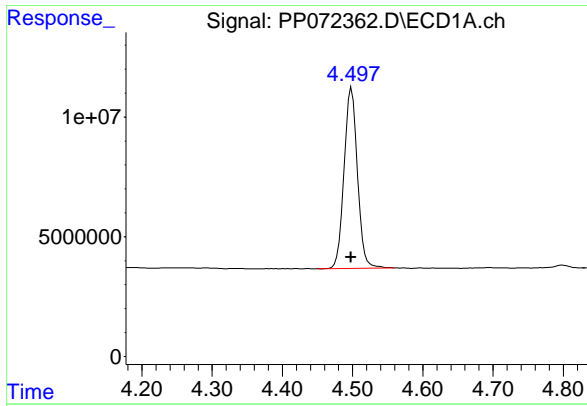
Manual Integrations
APPROVED

Reviewed By :Yogesh Patel 05/28/2025
 Supervised By :mohammad ahmed 05/30/2025

Integration File signal 1: autoint1.e
 Integration File signal 2: autoint2.e
 Quant Time: May 27 11:13:01 2025
 Quant Method : Z:\pestpcbsrv\HPCHEM1\ECD_P\methods\PP051925.M
 Quant Title : GC EXTRACTABLES
 QLast Update : Sat May 24 03:32:20 2025
 Response via : Initial Calibration
 Integrator: ChemStation

Volume Inj. : 2 µl
 Signal #1 Phase : ZB-MR1 Signal #2 Phase: ZB-MR2
 Signal #1 Info : 30Mx0.32mmx 0.50µm Signal #2 Info : 30M x 0.32mm x 0.25µm





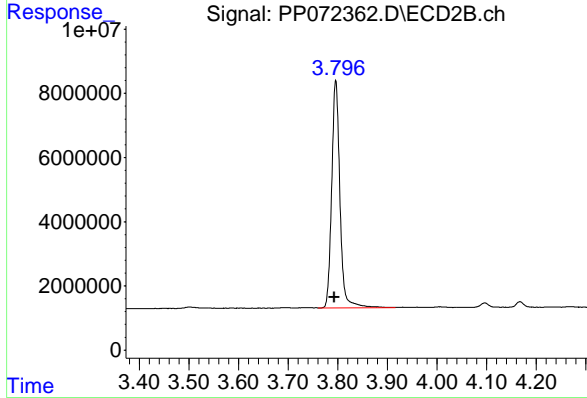
#1 Tetrachloro-m-xylene

R.T.: 4.498 min
 Delta R.T.: 0.000 min
 Response: 99696096
 Conc: 49.58 ng/ml

Instrument : ECD_P
 Client Sample Id : AR1248CCC500

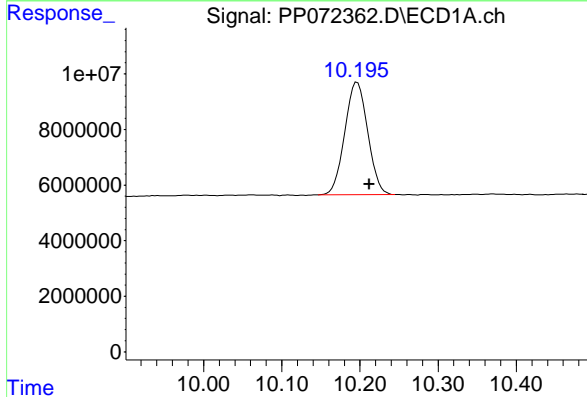
Manual Integrations
 APPROVED

Reviewed By :Yogesh Patel 05/28/2025
 Supervised By :mohammad ahmed 05/30/2025



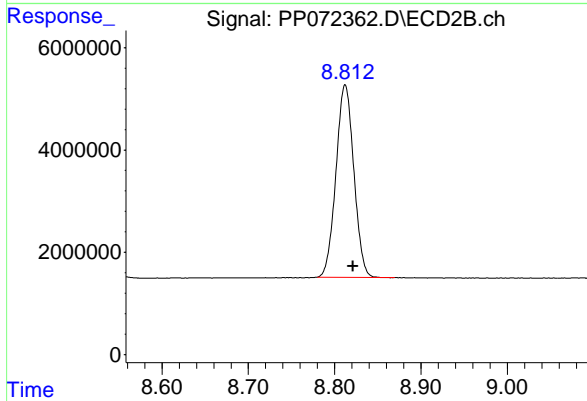
#1 Tetrachloro-m-xylene

R.T.: 3.796 min
 Delta R.T.: 0.003 min
 Response: 81901777
 Conc: 51.24 ng/ml



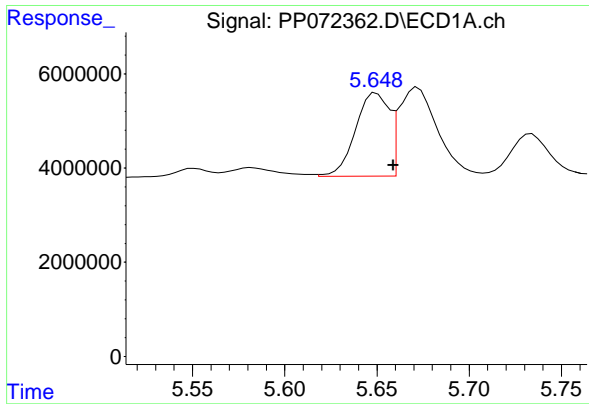
#2 Decachlorobiphenyl

R.T.: 10.195 min
 Delta R.T.: -0.017 min
 Response: 82569683
 Conc: 50.68 ng/ml m



#2 Decachlorobiphenyl

R.T.: 8.812 min
 Delta R.T.: -0.009 min
 Response: 54080228
 Conc: 51.09 ng/ml



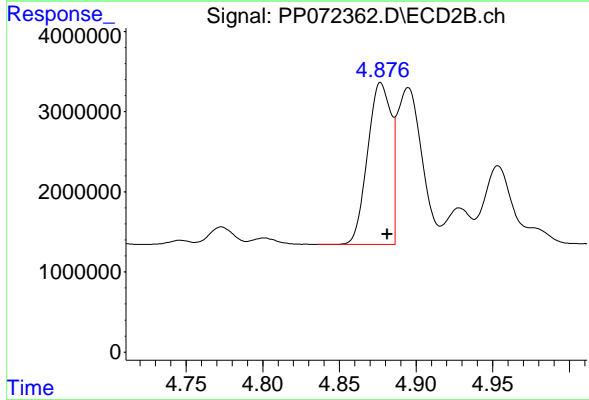
#21 AR-1248-1

R.T.: 5.650 min
 Delta R.T.: -0.009 min
 Response: 22517374
 Conc: 465.28 ng/ml

Instrument : ECD_P
 Client Sample Id : AR1248CCC500

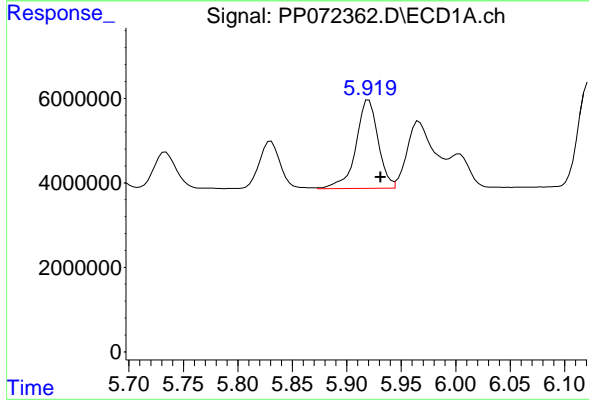
Manual Integrations
 APPROVED

Reviewed By :Yogesh Patel 05/28/2025
 Supervised By :mohammad ahmed 05/30/2025



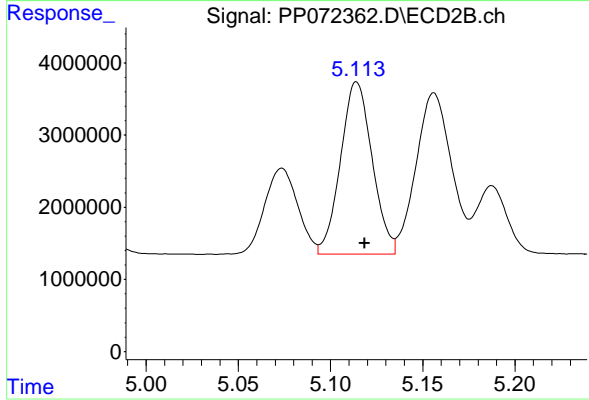
#21 AR-1248-1

R.T.: 4.878 min
 Delta R.T.: -0.004 min
 Response: 21502091
 Conc: 496.34 ng/ml



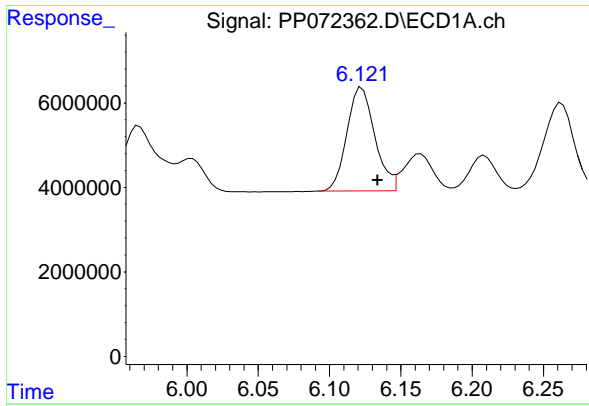
#22 AR-1248-2

R.T.: 5.920 min
 Delta R.T.: -0.011 min
 Response: 29781329
 Conc: 491.12 ng/ml



#22 AR-1248-2

R.T.: 5.114 min
 Delta R.T.: -0.004 min
 Response: 28516019
 Conc: 504.91 ng/ml



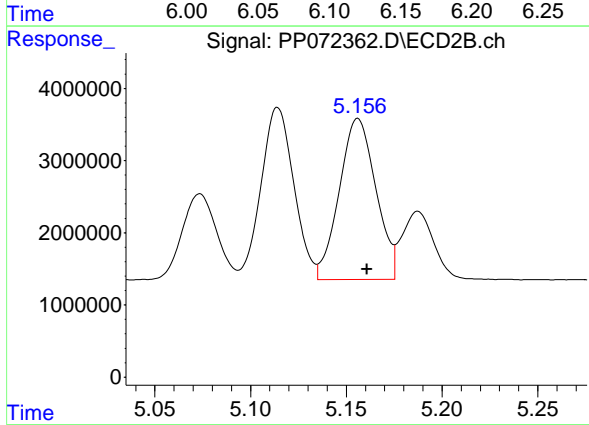
#23 AR-1248-3

R.T.: 6.123 min
 Delta R.T.: -0.011 min
 Response: 33362594
 Conc: 504.12 ng/ml

Instrument :
 ECD_P
 Client Sample Id :
 AR1248CCC500

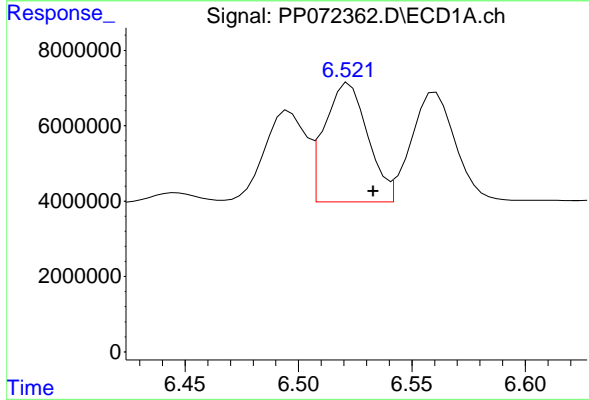
Manual Integrations
 APPROVED

Reviewed By :Yogesh Patel 05/28/2025
 Supervised By :mohammad ahmed 05/30/2025



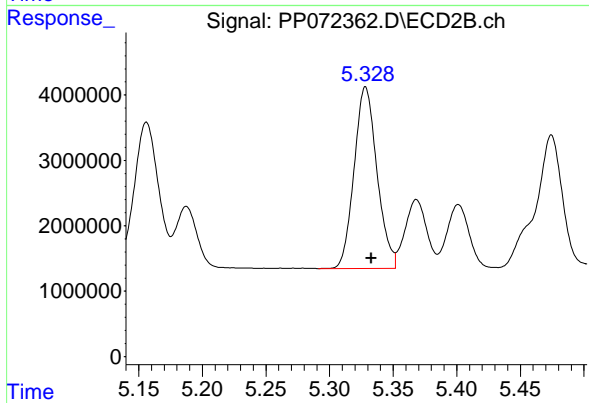
#23 AR-1248-3

R.T.: 5.156 min
 Delta R.T.: -0.005 min
 Response: 29637172
 Conc: 501.41 ng/ml



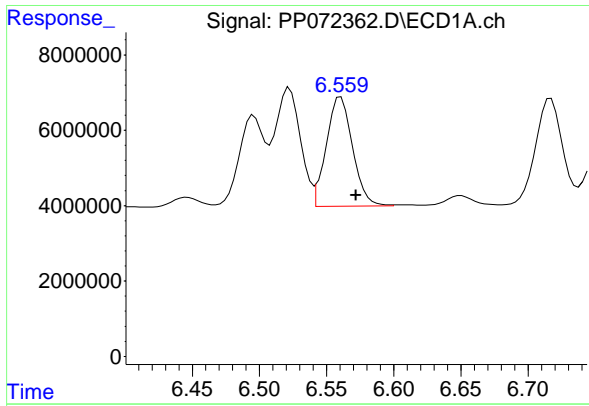
#24 AR-1248-4

R.T.: 6.522 min
 Delta R.T.: -0.011 min
 Response: 41816265
 Conc: 478.49 ng/ml



#24 AR-1248-4

R.T.: 5.328 min
 Delta R.T.: -0.004 min
 Response: 34776347
 Conc: 499.28 ng/ml



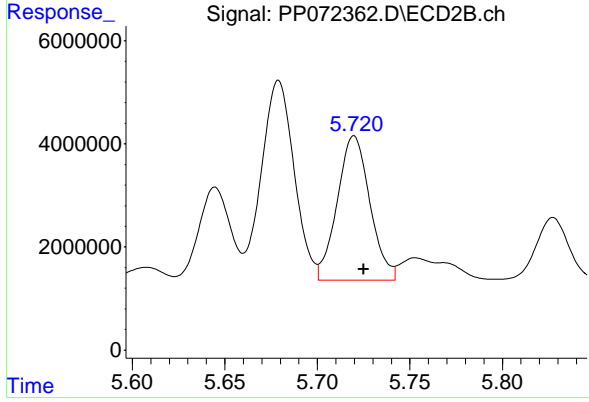
#25 AR-1248-5

R.T.: 6.561 min
 Delta R.T.: -0.011 min
 Response: 39438403
 Conc: 475.01 ng/ml

Instrument :
 ECD_P
 Client Sample Id :
 AR1248CCC500

Manual Integrations
 APPROVED

Reviewed By :Yogesh Patel 05/28/2025
 Supervised By :mohammad ahmed 05/30/2025



#25 AR-1248-5

R.T.: 5.720 min
 Delta R.T.: -0.005 min
 Response: 34362205
 Conc: 492.72 ng/ml