

Data Path : Z:\pestpcbsrv\HPCHEM1\ECD_P\Data\PP052725\
 Data File : PP072363.D
 Signal(s) : Signal #1: ECD1A.ch Signal #2: ECD2B.ch
 Acq On : 27 May 2025 09:37
 Operator : YP\AJ
 Sample : AR1254CCC500
 Misc :
 ALS Vial : 6 Sample Multiplier: 1

Instrument :
 ECD_P
ClientSampleId :
 AR1254CCC500

Manual Integrations
APPROVED
 Reviewed By :Yogesh Patel 05/28/2025
 Supervised By :mohammad ahmed 05/30/2025

Integration File signal 1: autoint1.e
 Integration File signal 2: autoint2.e
 Quant Time: May 27 11:13:38 2025
 Quant Method : Z:\pestpcbsrv\HPCHEM1\ECD_P\methods\PP051925.M
 Quant Title : GC EXTRACTABLES
 QLast Update : Sat May 24 03:32:20 2025
 Response via : Initial Calibration
 Integrator: ChemStation

Volume Inj. : 2 µl
 Signal #1 Phase : ZB-MR1 Signal #2 Phase: ZB-MR2
 Signal #1 Info : 30Mx0.32mmx 0.50µ Signal #2 Info : 30M x 0.32mm x 0.25µm

Compound	RT#1	RT#2	Resp#1	Resp#2	ng/ml	ng/ml

System Monitoring Compounds						
1) SA Tetrachlo...	4.501	3.796	101.1E6	87671749	50.254	54.851
2) SA Decachlor...	10.199	8.813	85396634	57852230	52.419m	54.650
Target Compounds						
26) L6 AR-1254-1	6.500	5.679	41289161	51563524	480.088	515.871
27) L6 AR-1254-2	6.716	5.827	62924183	44558632	481.523	516.281
28) L6 AR-1254-3	7.079	6.230	64905826	69285882	491.699	538.684
29) L6 AR-1254-4	7.361	6.458	59770251	44952425	457.972	527.014
30) L6 AR-1254-5	7.777	6.875	57014025	60160007	512.501	530.738

(f)=RT Delta > 1/2 Window (#)=Amounts differ by > 25% (m)=manual int.

Data Path : Z:\pestpcbsrv\HPCHEM1\ECD_P\Data\PP052725\
 Data File : PP072363.D
 Signal(s) : Signal #1: ECD1A.ch Signal #2: ECD2B.ch
 Acq On : 27 May 2025 09:37
 Operator : YP\AJ
 Sample : AR1254CCC500
 Misc :
 ALS Vial : 6 Sample Multiplier: 1

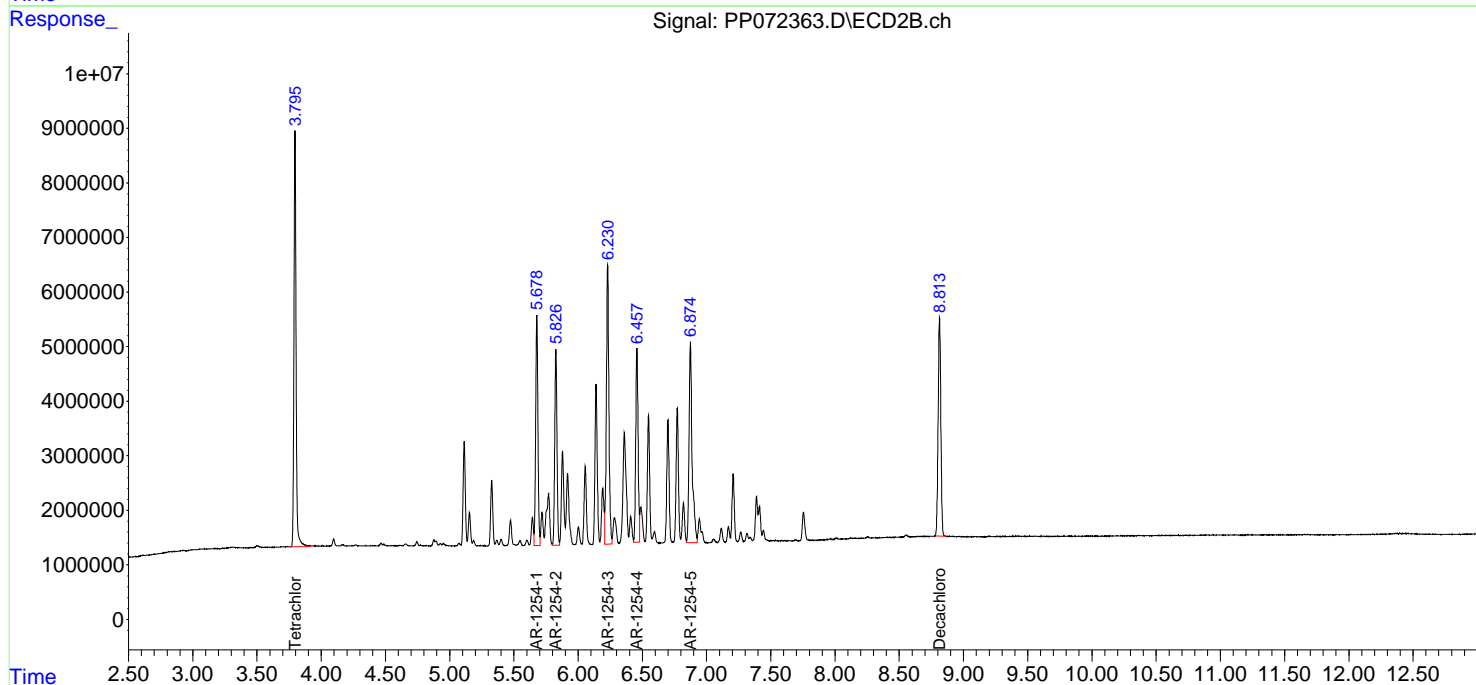
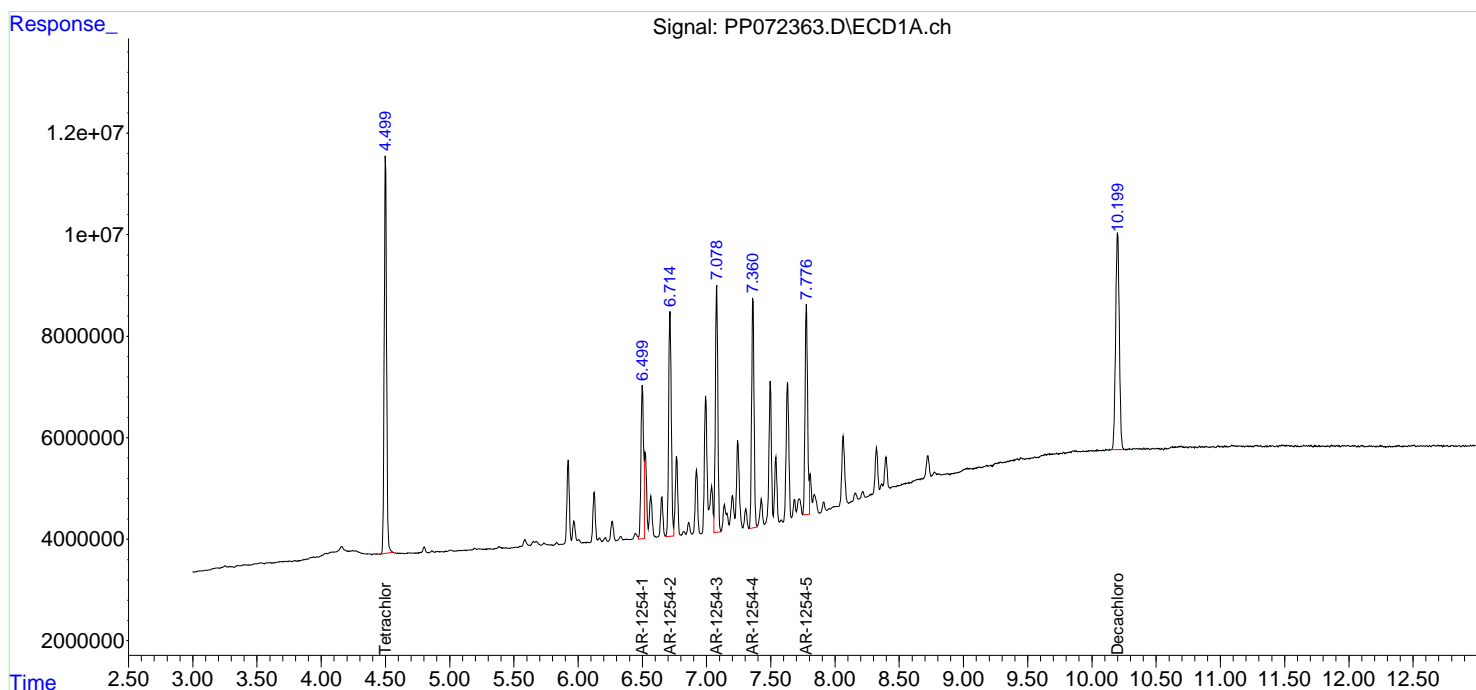
Instrument :
 ECD_P
 ClientSampleId :
 AR1254CCC500

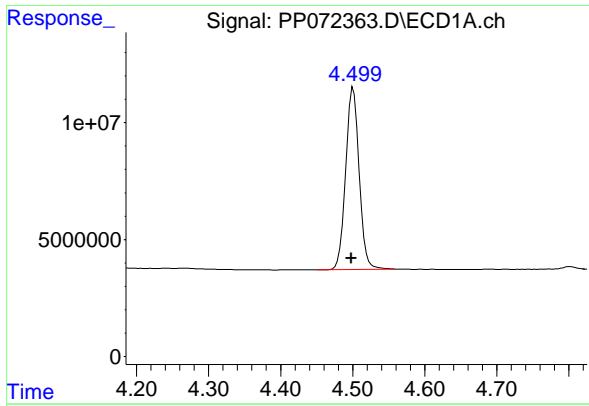
Manual Integrations
 APPROVED

Reviewed By :Yogesh Patel 05/28/2025
 Supervised By :mohammad ahmed 05/30/2025

Integration File signal 1: autoint1.e
 Integration File signal 2: autoint2.e
 Quant Time: May 27 11:13:38 2025
 Quant Method : Z:\pestpcbsrv\HPCHEM1\ECD_P\methods\PP051925.M
 Quant Title : GC EXTRACTABLES
 QLast Update : Sat May 24 03:32:20 2025
 Response via : Initial Calibration
 Integrator: ChemStation

Volume Inj. : 2 µl
 Signal #1 Phase : ZB-MR1 Signal #2 Phase: ZB-MR2
 Signal #1 Info : 30Mx0.32mmx 0.50µ Signal #2 Info : 30M x 0.32mm x 0.25µm





#1 Tetrachloro-m-xylene

R.T.: 4.501 min
 Delta R.T.: 0.003 min
 Response: 101050130
 Conc: 50.25 ng/ml

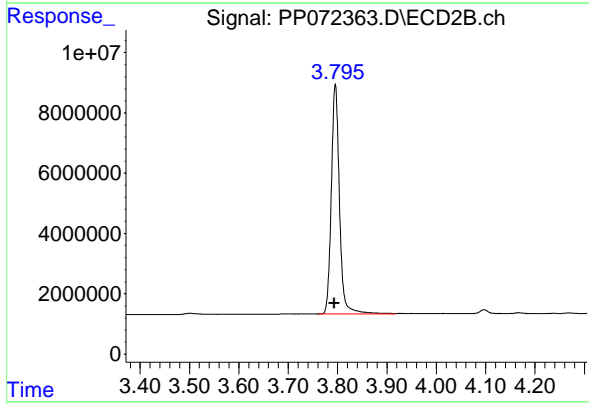
Instrument :

ECD_P

Client Sample Id :
 AR1254CCC500

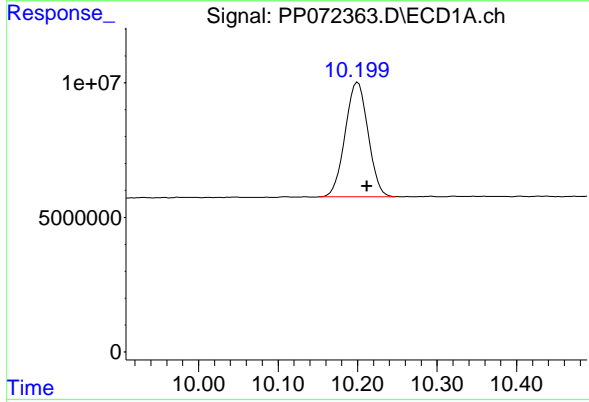
Manual Integrations
 APPROVED

Reviewed By :Yogesh Patel 05/28/2025
 Supervised By :mohammad ahmed 05/30/2025



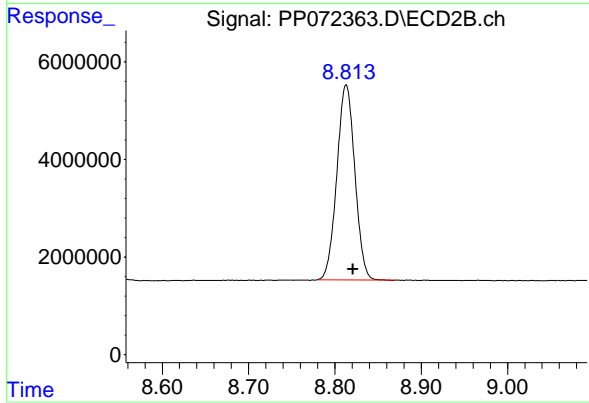
#1 Tetrachloro-m-xylene

R.T.: 3.796 min
 Delta R.T.: 0.002 min
 Response: 87671749
 Conc: 54.85 ng/ml



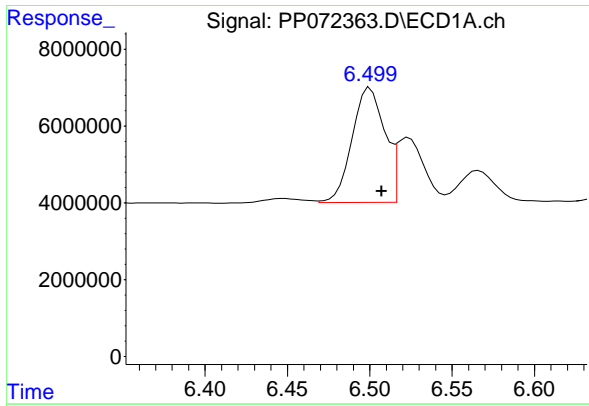
#2 Decachlorobiphenyl

R.T.: 10.199 min
 Delta R.T.: -0.013 min
 Response: 85396634
 Conc: 52.42 ng/ml m



#2 Decachlorobiphenyl

R.T.: 8.813 min
 Delta R.T.: -0.008 min
 Response: 57852230
 Conc: 54.65 ng/ml



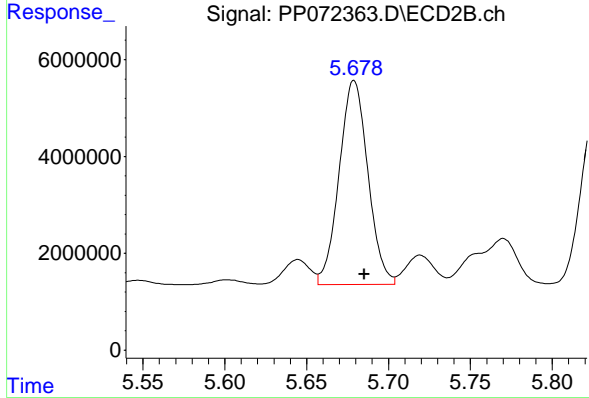
#26 AR-1254-1

R.T.: 6.500 min
 Delta R.T.: -0.007 min
 Response: 41289161
 Conc: 480.09 ng/ml

Instrument : ECD_P
 ClientSampleId : AR1254CCC500

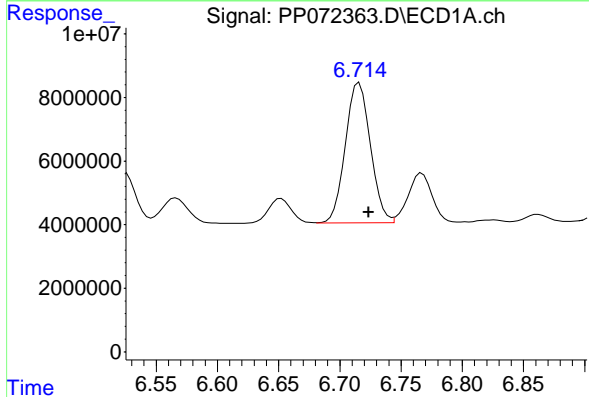
Manual Integrations
 APPROVED

Reviewed By :Yogesh Patel 05/28/2025
 Supervised By :mohammad ahmed 05/30/2025



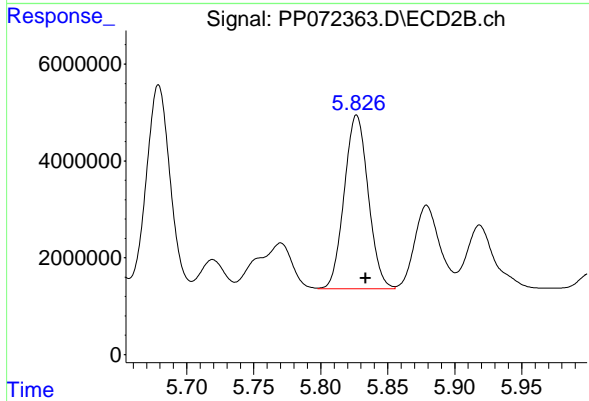
#26 AR-1254-1

R.T.: 5.679 min
 Delta R.T.: -0.006 min
 Response: 51563524
 Conc: 515.87 ng/ml



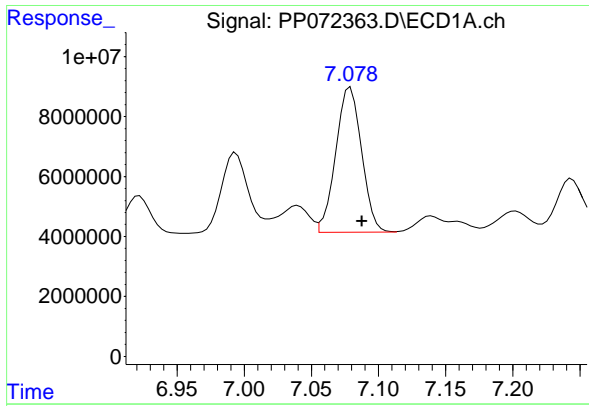
#27 AR-1254-2

R.T.: 6.716 min
 Delta R.T.: -0.008 min
 Response: 62924183
 Conc: 481.52 ng/ml



#27 AR-1254-2

R.T.: 5.827 min
 Delta R.T.: -0.007 min
 Response: 44558632
 Conc: 516.28 ng/ml



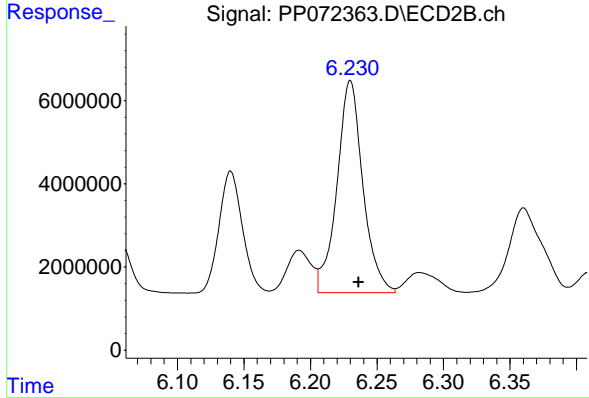
#28 AR-1254-3

R.T.: 7.079 min
 Delta R.T.: -0.009 min
 Response: 64905826
 Conc: 491.70 ng/ml

Instrument : ECD_P
 Client Sample Id : AR1254CCC500

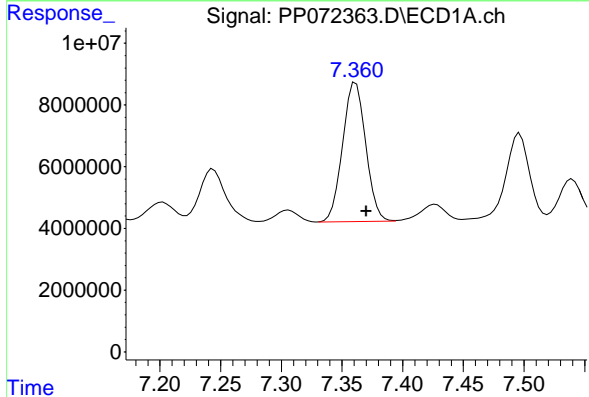
Manual Integrations
 APPROVED

Reviewed By :Yogesh Patel 05/28/2025
 Supervised By :mohammad ahmed 05/30/2025



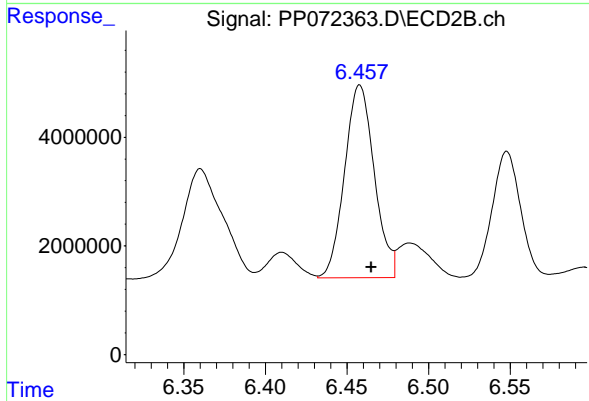
#28 AR-1254-3

R.T.: 6.230 min
 Delta R.T.: -0.006 min
 Response: 69285882
 Conc: 538.68 ng/ml



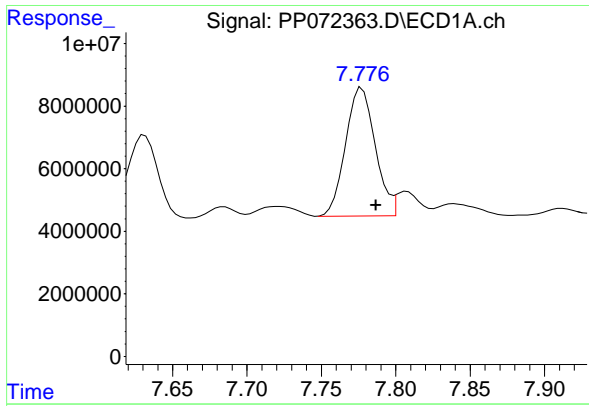
#29 AR-1254-4

R.T.: 7.361 min
 Delta R.T.: -0.009 min
 Response: 59770251
 Conc: 457.97 ng/ml



#29 AR-1254-4

R.T.: 6.458 min
 Delta R.T.: -0.007 min
 Response: 44952425
 Conc: 527.01 ng/ml



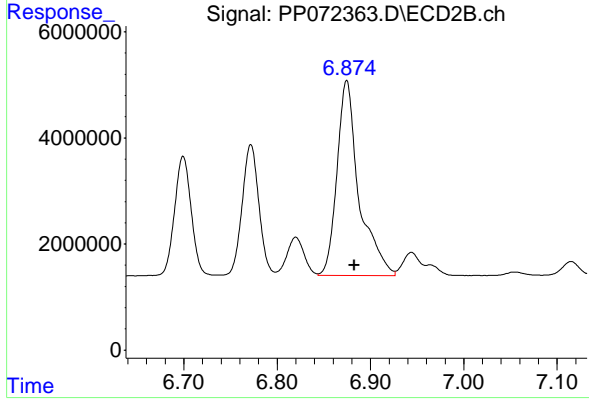
#30 AR-1254-5

R.T.: 7.777 min
 Delta R.T.: -0.009 min
 Response: 57014025
 Conc: 512.50 ng/ml

Instrument : ECD_P
 Client Sample Id : AR1254CCC500

Manual Integrations
 APPROVED

Reviewed By :Yogesh Patel 05/28/2025
 Supervised By :mohammad ahmed 05/30/2025



#30 AR-1254-5

R.T.: 6.875 min
 Delta R.T.: -0.008 min
 Response: 60160007
 Conc: 530.74 ng/ml