

Data Path : Z:\pestpcbsrv\HPCHEM1\ECD_P\Data\PP052725\
 Data File : PP072371.D
 Signal(s) : Signal #1: ECD1A.ch Signal #2: ECD2B.ch
 Acq On : 27 May 2025 13:28
 Operator : YP\AJ
 Sample : Q2122-02
 Misc :
 ALS Vial : 13 Sample Multiplier: 1

Instrument :
 ECD_P
ClientSampleId :
 3

Manual Integrations
APPROVED
 Reviewed By :Yogesh Patel 05/30/2025
 Supervised By :mohammad ahmed 05/30/2025

Integration File signal 1: autoint1.e
 Integration File signal 2: autoint2.e
 Quant Time: May 28 05:57:07 2025
 Quant Method : Z:\pestpcbsrv\HPCHEM1\ECD_P\methods\PP051925.M
 Quant Title : GC EXTRACTABLES
 QLast Update : Sat May 24 03:32:20 2025
 Response via : Initial Calibration
 Integrator: ChemStation

Volume Inj. : 2 µl
 Signal #1 Phase : ZB-MR1 Signal #2 Phase: ZB-MR2
 Signal #1 Info : 30Mx0.32mmx 0.50µ Signal #2 Info : 30M x 0.32mm x 0.25µm

Compound	RT#1	RT#2	Resp#1	Resp#2	ng/ml	ng/ml

System Monitoring Compounds						
1) SA Tetrachlo...	4.500	3.797	35855704	30981466	17.832	19.383
2) SA Decachlor...	10.199	8.814	28727177	21000240	17.634m	19.838
Target Compounds						
16) L4 AR-1242-1	5.651	4.878	3978614	3445929	63.559	66.130
17) L4 AR-1242-2	5.674	4.896	6019911	5081586	69.370	69.141
18) L4 AR-1242-3	5.736	5.073	4093844	3614355	74.344	92.378
19) L4 AR-1242-4	5.833	5.157	3763501	4125279	84.861	109.765 #
20) L4 AR-1242-5	6.585	5.680	2999001	2544121	58.821m	52.720

(f)=RT Delta > 1/2 Window (#)=Amounts differ by > 25% (m)=manual int.

Data Path : Z:\pestpcbsrv\HPCHEM1\ECD_P\Data\PP052725\
 Data File : PP072371.D
 Signal(s) : Signal #1: ECD1A.ch Signal #2: ECD2B.ch
 Acq On : 27 May 2025 13:28
 Operator : YP\AJ
 Sample : Q2122-02
 Misc :
 ALS Vial : 13 Sample Multiplier: 1

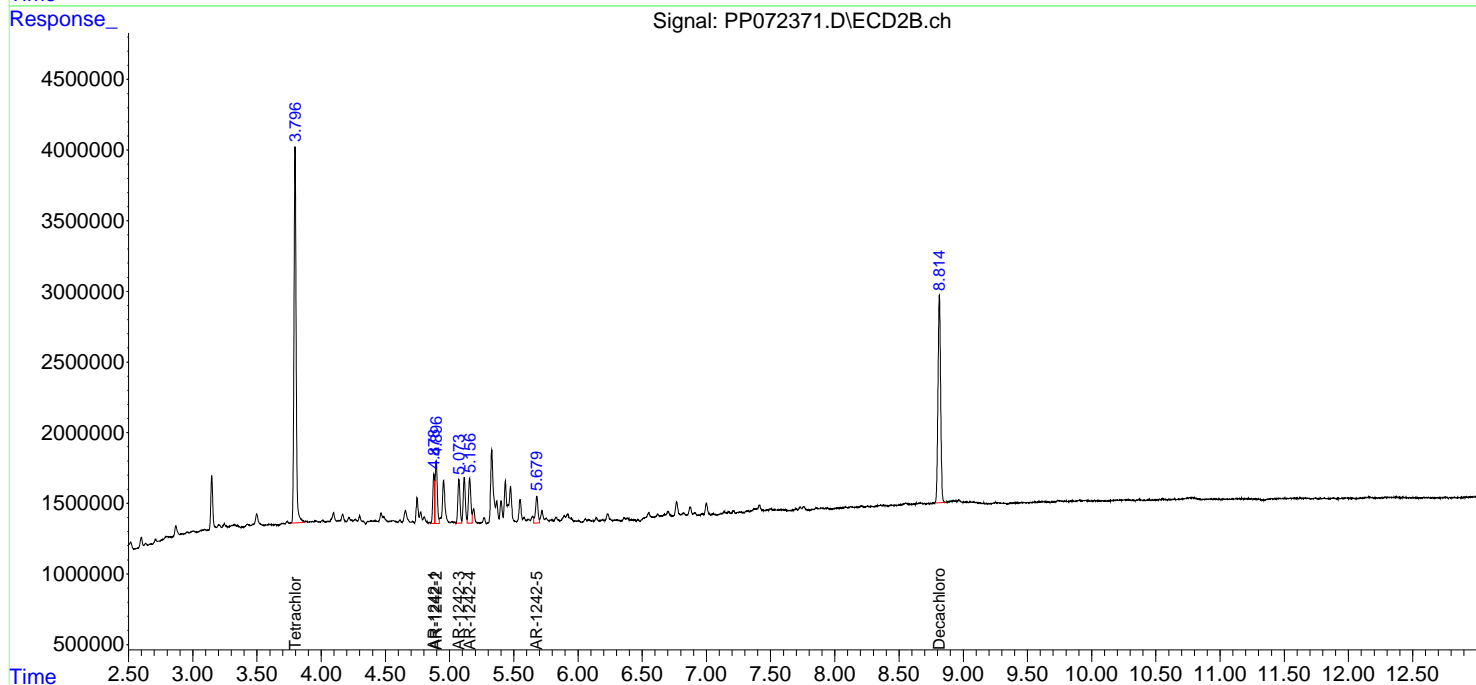
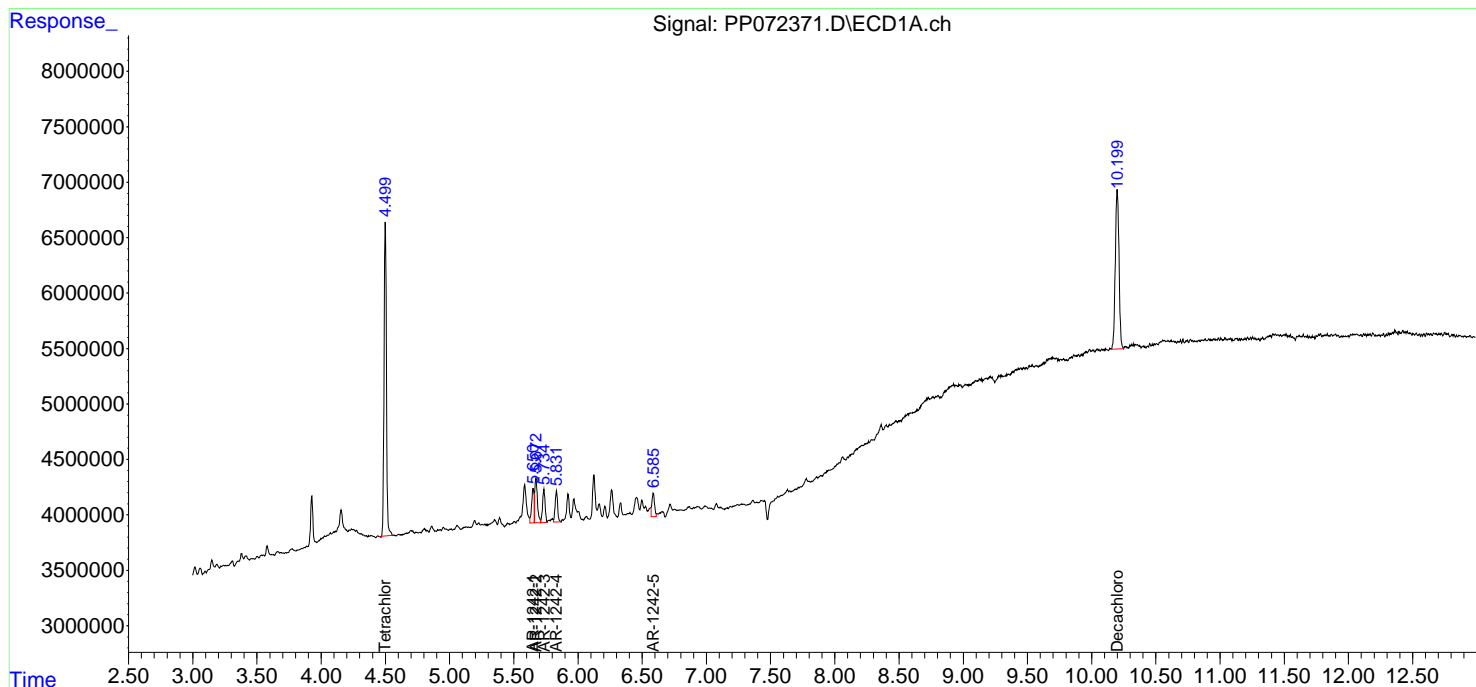
Instrument :
 ECD_P
 ClientSampleId :
 3

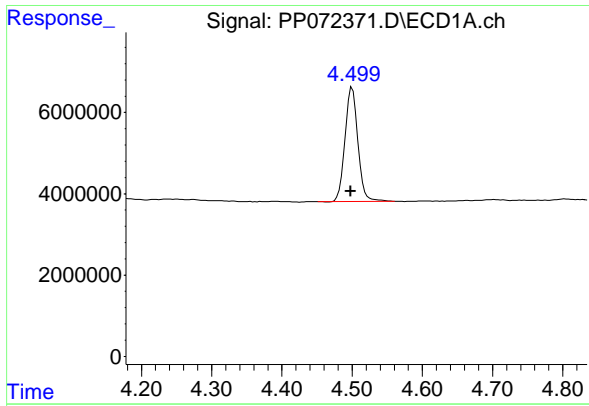
Manual Integrations
 APPROVED

Reviewed By :Yogesh Patel 05/30/2025
 Supervised By :mohammad ahmed 05/30/2025

Integration File signal 1: autoint1.e
 Integration File signal 2: autoint2.e
 Quant Time: May 28 05:57:07 2025
 Quant Method : Z:\pestpcbsrv\HPCHEM1\ECD_P\methods\PP051925.M
 Quant Title : GC EXTRACTABLES
 QLast Update : Sat May 24 03:32:20 2025
 Response via : Initial Calibration
 Integrator: ChemStation

Volume Inj. : 2 µl
 Signal #1 Phase : ZB-MR1 Signal #2 Phase: ZB-MR2
 Signal #1 Info : 30Mx0.32mmx 0.50µ Signal #2 Info : 30M x 0.32mm x 0.25µm





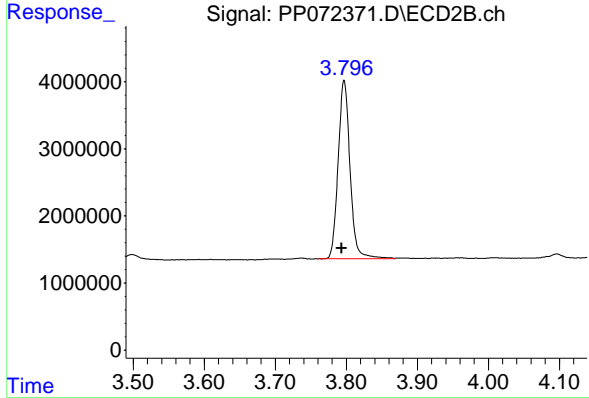
#1 Tetrachloro-m-xylene

R.T.: 4.500 min
 Delta R.T.: 0.002 min
 Response: 35855704
 Conc: 17.83 ng/ml

Instrument :
 ECD_P
 ClientSampleId :
 3

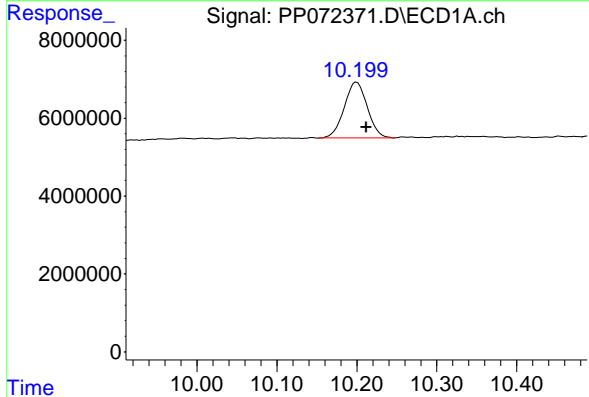
Manual Integrations
 APPROVED

Reviewed By :Yogesh Patel 05/30/2025
 Supervised By :mohammad ahmed 05/30/2025



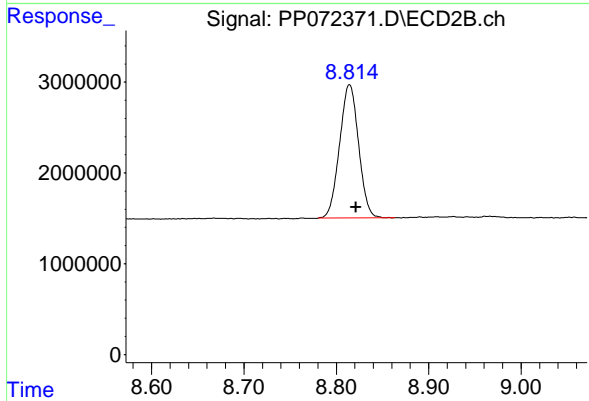
#1 Tetrachloro-m-xylene

R.T.: 3.797 min
 Delta R.T.: 0.004 min
 Response: 30981466
 Conc: 19.38 ng/ml



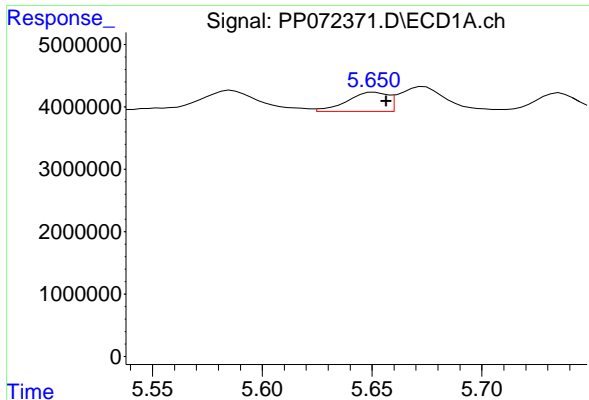
#2 Decachlorobiphenyl

R.T.: 10.199 min
 Delta R.T.: -0.014 min
 Response: 28727177
 Conc: 17.63 ng/ml m



#2 Decachlorobiphenyl

R.T.: 8.814 min
 Delta R.T.: -0.007 min
 Response: 21000240
 Conc: 19.84 ng/ml



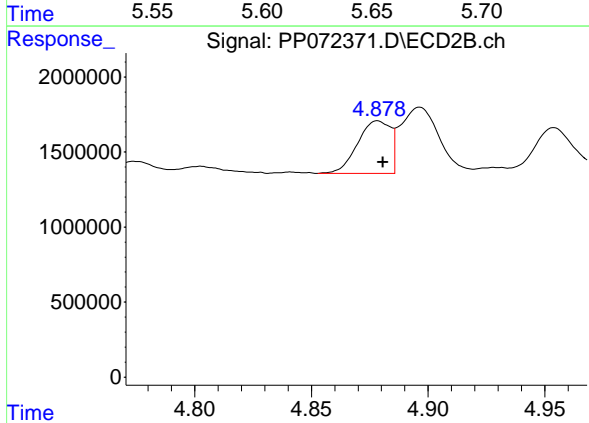
#16 AR-1242-1

R.T.: 5.651 min
 Delta R.T.: -0.005 min
 Response: 3978614
 Conc: 63.56 ng/ml

Instrument :
 ECD_P
 ClientSampleId :
 3

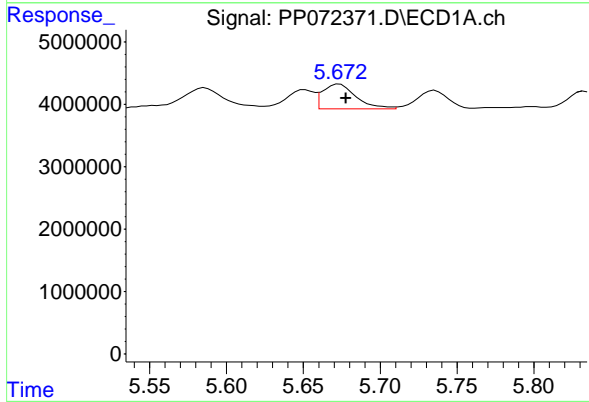
Manual Integrations
 APPROVED

Reviewed By :Yogesh Patel 05/30/2025
 Supervised By :mohammad ahmed 05/30/2025



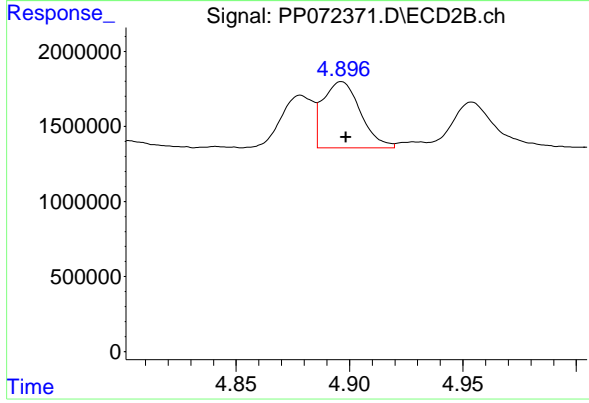
#16 AR-1242-1

R.T.: 4.878 min
 Delta R.T.: -0.002 min
 Response: 3445929
 Conc: 66.13 ng/ml



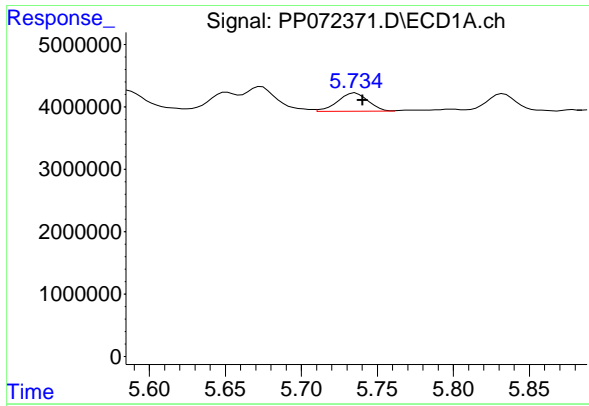
#17 AR-1242-2

R.T.: 5.674 min
 Delta R.T.: -0.004 min
 Response: 6019911
 Conc: 69.37 ng/ml



#17 AR-1242-2

R.T.: 4.896 min
 Delta R.T.: -0.002 min
 Response: 5081586
 Conc: 69.14 ng/ml



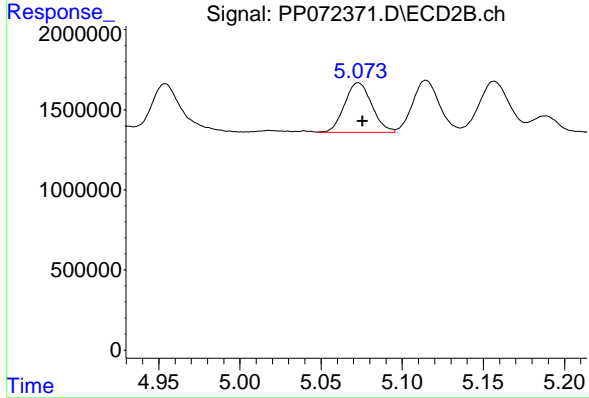
#18 AR-1242-3

R.T.: 5.736 min
 Delta R.T.: -0.005 min
 Response: 4093844
 Conc: 74.34 ng/ml

Instrument :
 ECD_P
 ClientSampleId :
 3

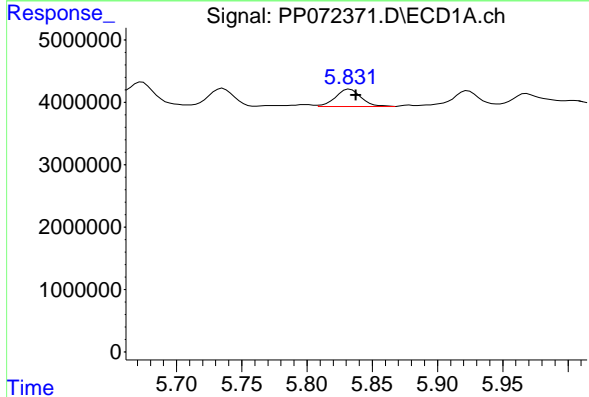
Manual Integrations
 APPROVED

Reviewed By :Yogesh Patel 05/30/2025
 Supervised By :mohammad ahmed 05/30/2025



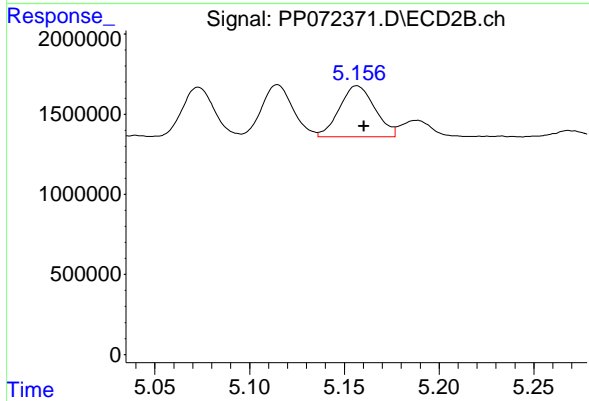
#18 AR-1242-3

R.T.: 5.073 min
 Delta R.T.: -0.003 min
 Response: 3614355
 Conc: 92.38 ng/ml



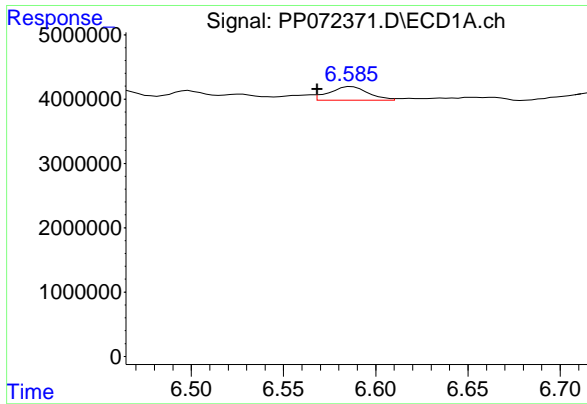
#19 AR-1242-4

R.T.: 5.833 min
 Delta R.T.: -0.005 min
 Response: 3763501
 Conc: 84.86 ng/ml



#19 AR-1242-4

R.T.: 5.157 min
 Delta R.T.: -0.004 min
 Response: 4125279
 Conc: 109.77 ng/ml



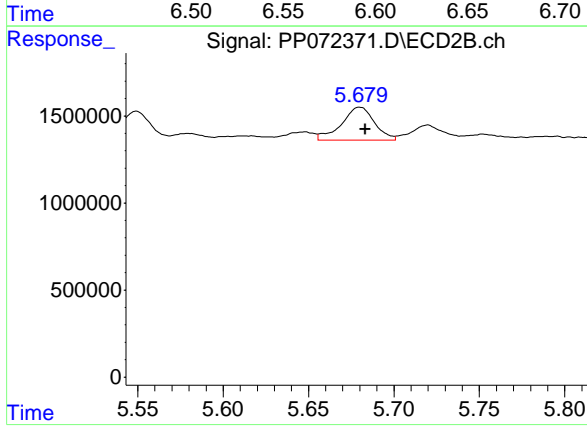
#20 AR-1242-5

R.T.: 6.585 min
 Delta R.T.: 0.017 min
 Response: 2999001
 Conc: 58.82 ng/ml

Instrument :
 ECD_P
 ClientSampleId :
 3

Manual Integrations
 APPROVED

Reviewed By :Yogesh Patel 05/30/2025
 Supervised By :mohammad ahmed 05/30/2025



#20 AR-1242-5

R.T.: 5.680 min
 Delta R.T.: -0.003 min
 Response: 2544121
 Conc: 52.72 ng/ml