

Data Path : Z:\pestpcbsrv\HPCHEM1\ECD_P\Data\PP052725\
 Data File : PP072377.D
 Signal(s) : Signal #1: ECD1A.ch Signal #2: ECD2B.ch
 Acq On : 27 May 2025 16:27
 Operator : YP\AJ
 Sample : AR1248CCC500
 Misc :
 ALS Vial : 5 Sample Multiplier: 1

Instrument :
 ECD_P
ClientSampleId :
 AR1248CCC500

Manual Integrations
APPROVED
 Reviewed By :Yogesh Patel 05/30/2025
 Supervised By :mohammad ahmed 05/30/2025

Integration File signal 1: autoint1.e
 Integration File signal 2: autoint2.e
 Quant Time: May 28 06:16:45 2025
 Quant Method : Z:\pestpcbsrv\HPCHEM1\ECD_P\methods\PP051925.M
 Quant Title : GC EXTRACTABLES
 QLast Update : Sat May 24 03:32:20 2025
 Response via : Initial Calibration
 Integrator: ChemStation

Volume Inj. : 2 µl
 Signal #1 Phase : ZB-MR1 Signal #2 Phase: ZB-MR2
 Signal #1 Info : 30Mx0.32mmx 0.50µ Signal #2 Info : 30M x 0.32mm x 0.25µm

Compound	RT#1	RT#2	Resp#1	Resp#2	ng/ml	ng/ml

System Monitoring Compounds						
1) SA Tetrachlo...	4.499	3.796	97073389	85354558	48.276	53.401
2) SA Decachlor...	10.197	8.815	82215768	55746776	50.466m	52.661
Target Compounds						
21) L5 AR-1248-1	5.651	4.877	22138240	21420012	457.444	494.442
22) L5 AR-1248-2	5.922	5.115	29353057	27715048	484.054	490.729
23) L5 AR-1248-3	6.124	5.156	32782504	29088905	495.353	492.139
24) L5 AR-1248-4	6.524	5.329	41148427	34892006	470.848	500.942
25) L5 AR-1248-5	6.562	5.720	39338934	34856437	473.816	499.809

(f)=RT Delta > 1/2 Window (#)=Amounts differ by > 25% (m)=manual int.

Data Path : Z:\pestpcbsrv\HPCHEM1\ECD_P\Data\PP052725\
 Data File : PP072377.D
 Signal(s) : Signal #1: ECD1A.ch Signal #2: ECD2B.ch
 Acq On : 27 May 2025 16:27
 Operator : YP\AJ
 Sample : AR1248CCC500
 Misc :
 ALS Vial : 5 Sample Multiplier: 1

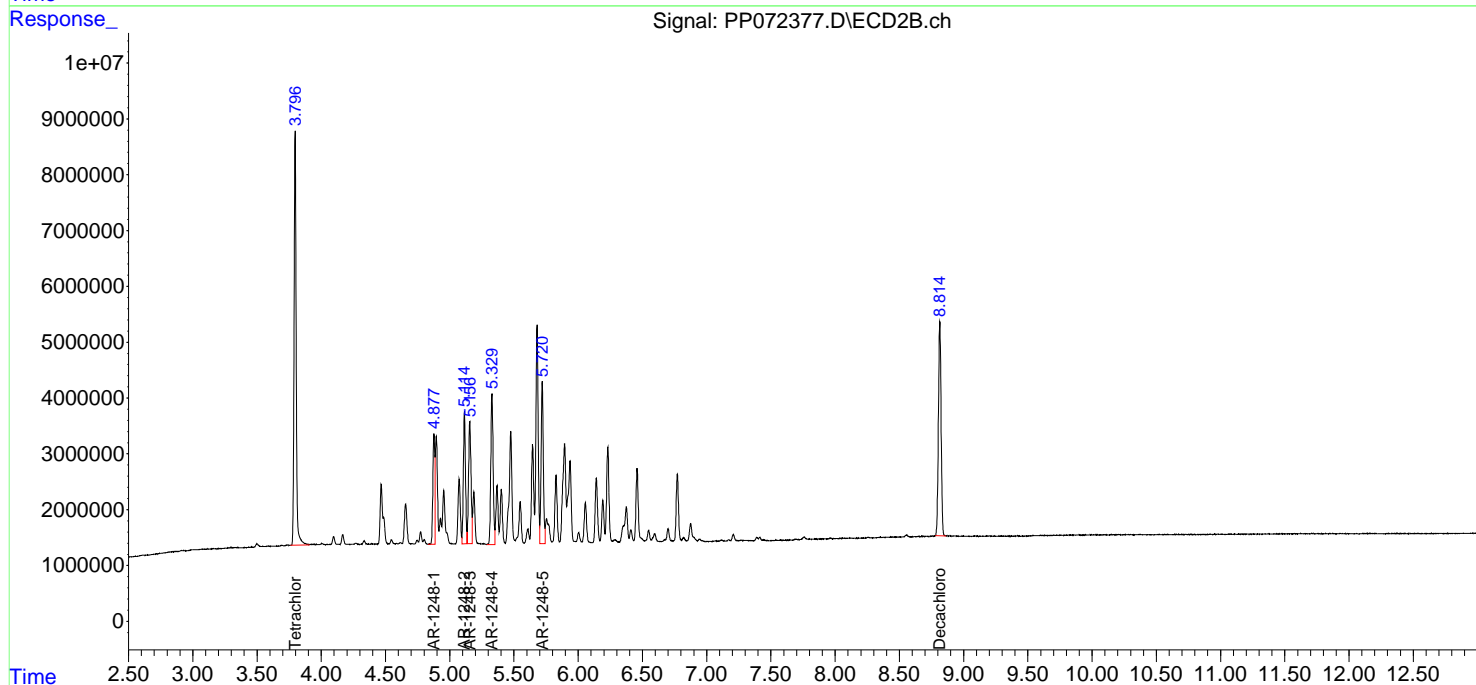
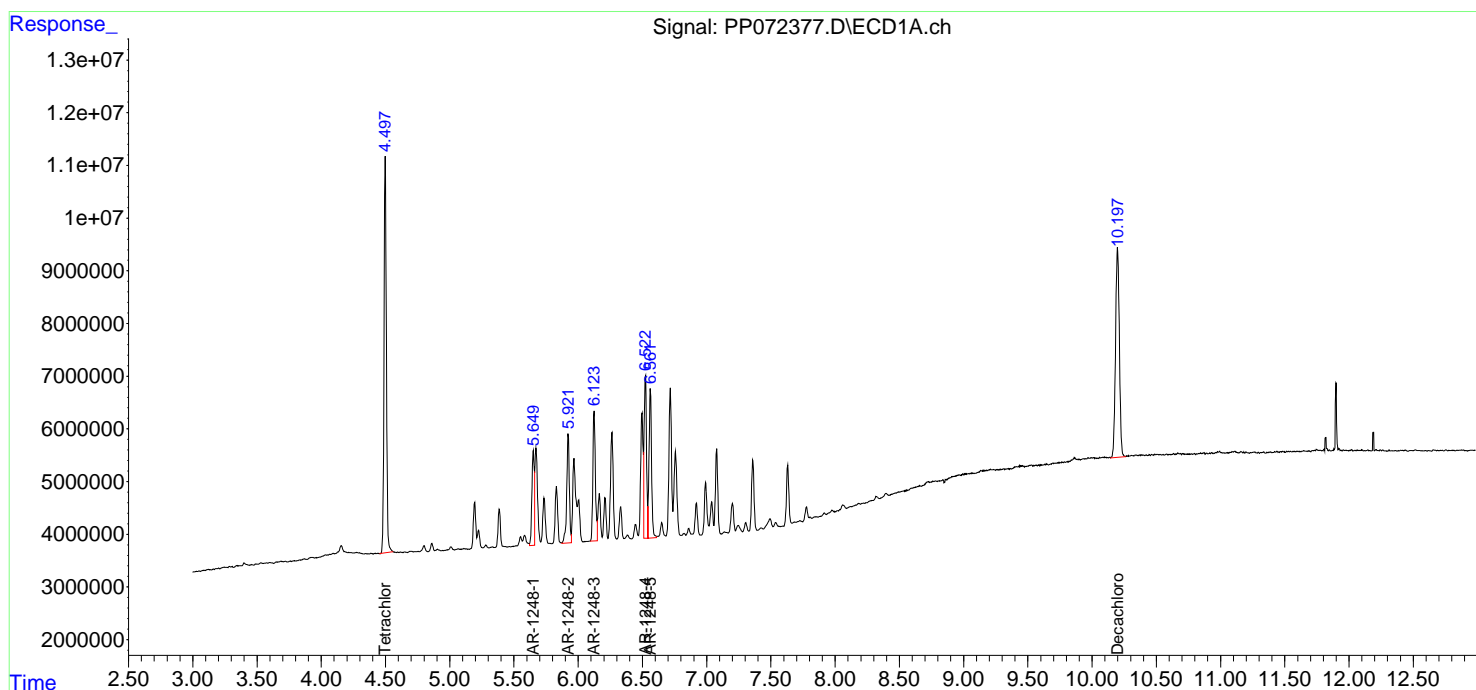
Instrument :
 ECD_P
ClientSampleId :
 AR1248CCC500

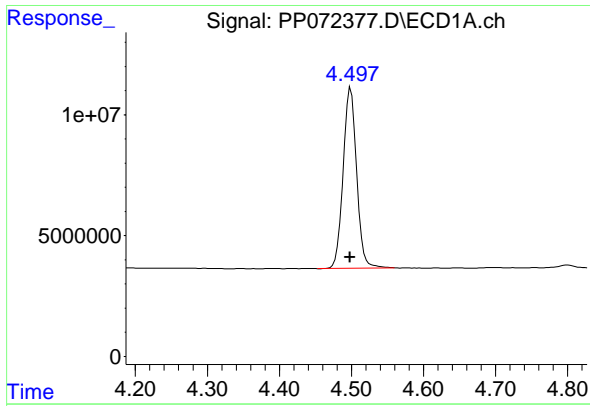
Manual Integrations
APPROVED

Reviewed By :Yogesh Patel 05/30/2025
 Supervised By :mohammad ahmed 05/30/2025

Integration File signal 1: autoint1.e
 Integration File signal 2: autoint2.e
 Quant Time: May 28 06:16:45 2025
 Quant Method : Z:\pestpcbsrv\HPCHEM1\ECD_P\methods\PP051925.M
 Quant Title : GC EXTRACTABLES
 QLast Update : Sat May 24 03:32:20 2025
 Response via : Initial Calibration
 Integrator: ChemStation

Volume Inj. : 2 µl
 Signal #1 Phase : ZB-MR1 Signal #2 Phase: ZB-MR2
 Signal #1 Info : 30Mx0.32mmx 0.50µm Signal #2 Info : 30M x 0.32mm x 0.25µm





#1 Tetrachloro-m-xylene

R.T.: 4.499 min
 Delta R.T.: 0.000 min
 Response: 97073389
 Conc: 48.28 ng/ml

Instrument :

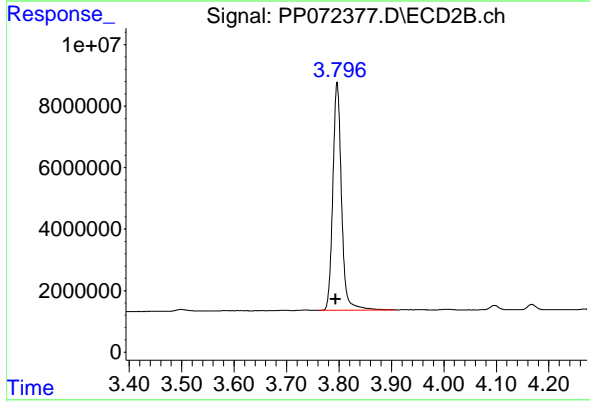
ECD_P

Client Sample Id :

AR1248CCC500

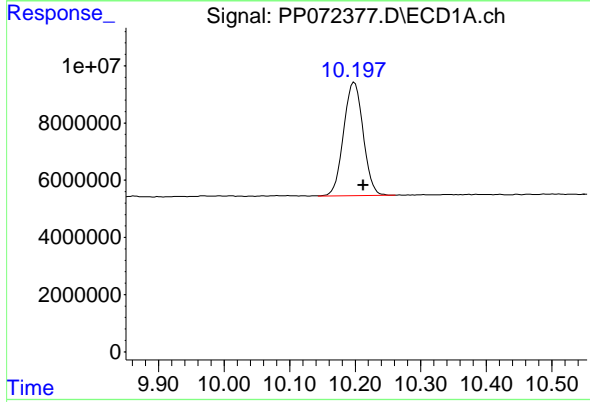
Manual Integrations
 APPROVED

Reviewed By :Yogesh Patel 05/30/2025
 Supervised By :mohammad ahmed 05/30/2025



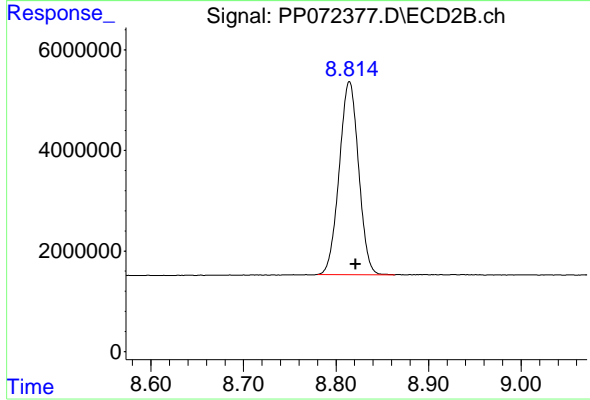
#1 Tetrachloro-m-xylene

R.T.: 3.796 min
 Delta R.T.: 0.003 min
 Response: 85354558
 Conc: 53.40 ng/ml



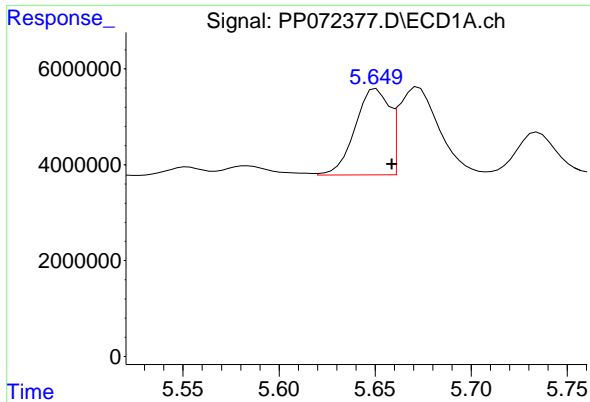
#2 Decachlorobiphenyl

R.T.: 10.197 min
 Delta R.T.: -0.015 min
 Response: 82215768
 Conc: 50.47 ng/ml m



#2 Decachlorobiphenyl

R.T.: 8.815 min
 Delta R.T.: -0.007 min
 Response: 55746776
 Conc: 52.66 ng/ml



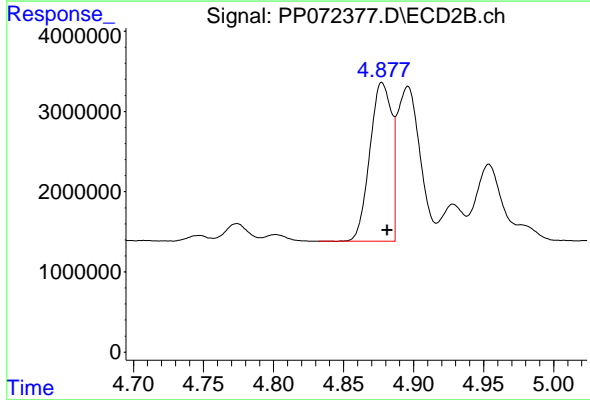
#21 AR-1248-1

R.T.: 5.651 min
 Delta R.T.: -0.008 min
 Response: 22138240
 Conc: 457.44 ng/ml

Instrument : ECD_P
 ClientSampleId : AR1248CCC500

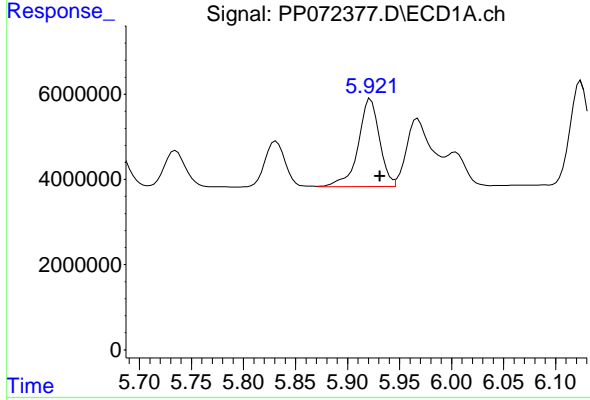
Manual Integrations
 APPROVED

Reviewed By :Yogesh Patel 05/30/2025
 Supervised By :mohammad ahmed 05/30/2025



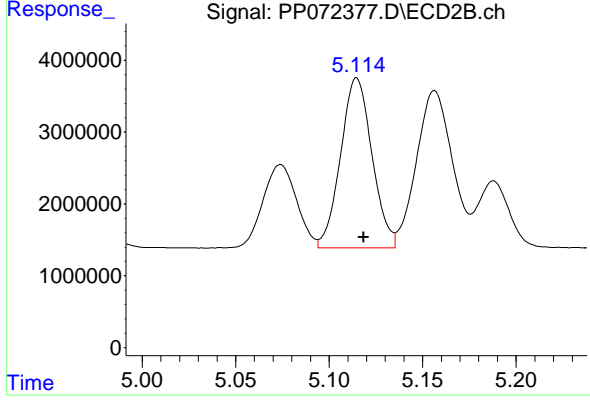
#21 AR-1248-1

R.T.: 4.877 min
 Delta R.T.: -0.004 min
 Response: 21420012
 Conc: 494.44 ng/ml



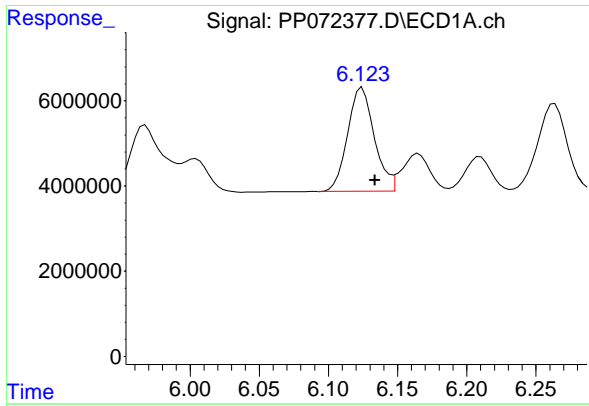
#22 AR-1248-2

R.T.: 5.922 min
 Delta R.T.: -0.009 min
 Response: 29353057
 Conc: 484.05 ng/ml



#22 AR-1248-2

R.T.: 5.115 min
 Delta R.T.: -0.004 min
 Response: 27715048
 Conc: 490.73 ng/ml



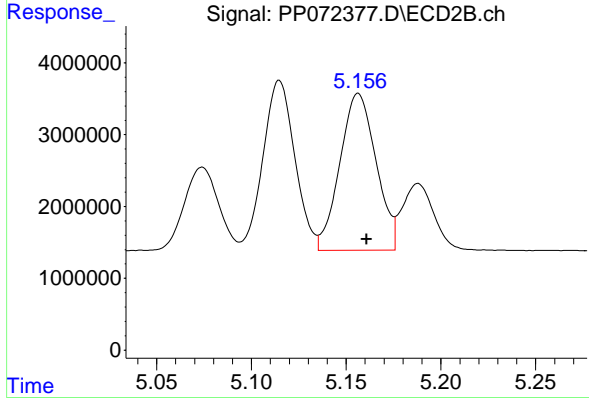
#23 AR-1248-3

R.T.: 6.124 min
 Delta R.T.: -0.009 min
 Response: 32782504
 Conc: 495.35 ng/ml

Instrument : ECD_P
 Client Sample Id : AR1248CCC500

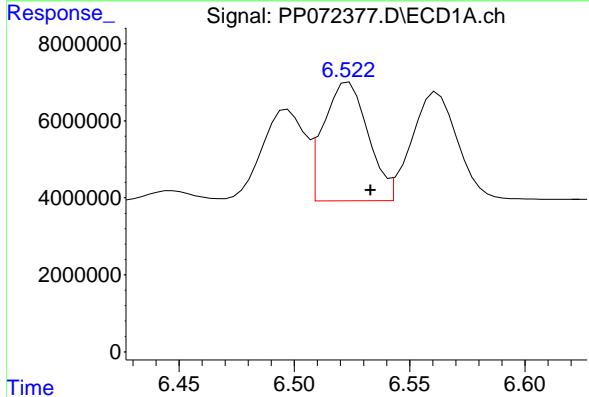
Manual Integrations
 APPROVED

Reviewed By :Yogesh Patel 05/30/2025
 Supervised By :mohammad ahmed 05/30/2025



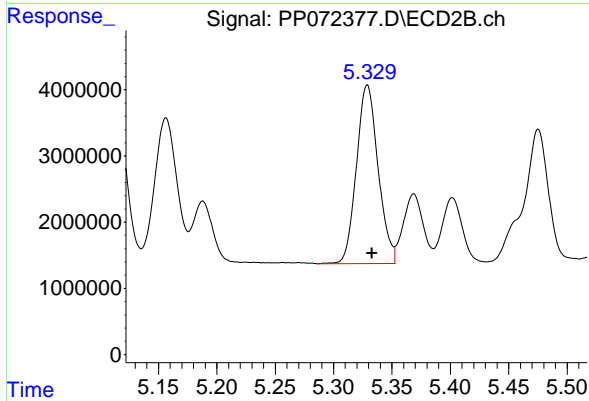
#23 AR-1248-3

R.T.: 5.156 min
 Delta R.T.: -0.004 min
 Response: 29088905
 Conc: 492.14 ng/ml



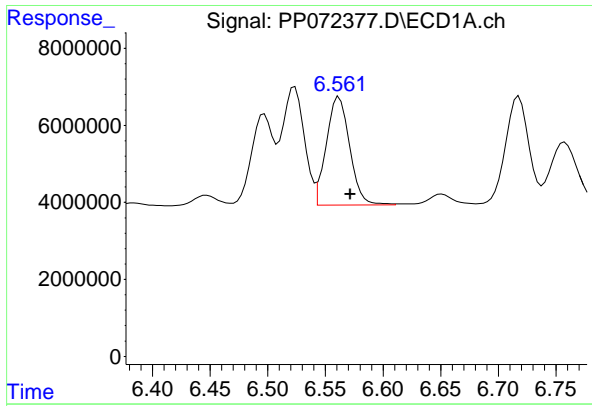
#24 AR-1248-4

R.T.: 6.524 min
 Delta R.T.: -0.009 min
 Response: 41148427
 Conc: 470.85 ng/ml



#24 AR-1248-4

R.T.: 5.329 min
 Delta R.T.: -0.004 min
 Response: 34892006
 Conc: 500.94 ng/ml



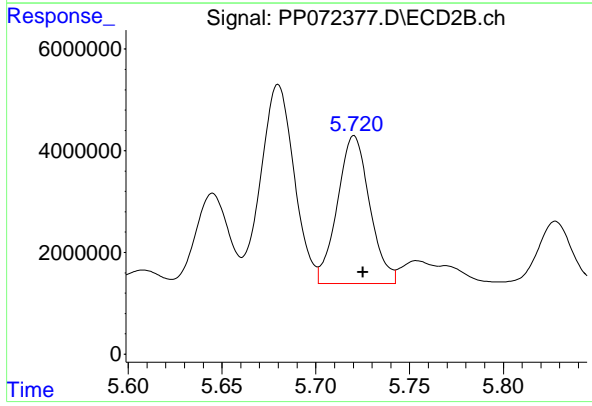
#25 AR-1248-5

R.T.: 6.562 min
 Delta R.T.: -0.010 min
 Response: 39338934
 Conc: 473.82 ng/ml

Instrument :
 ECD_P
 ClientSampleId :
 AR1248CCC500

Manual Integrations
 APPROVED

Reviewed By :Yogesh Patel 05/30/2025
 Supervised By :mohammad ahmed 05/30/2025



#25 AR-1248-5

R.T.: 5.720 min
 Delta R.T.: -0.005 min
 Response: 34856437
 Conc: 499.81 ng/ml