

Data Path : Z:\pestpcbsrv\HPCHEM1\ECD\_P\Data\PP052725\  
 Data File : PP072380.D  
 Signal(s) : Signal #1: ECD1A.ch Signal #2: ECD2B.ch  
 Acq On : 27 May 2025 17:16  
 Operator : YP\AJ  
 Sample : PB168160BL  
 Misc :  
 ALS Vial : 17 Sample Multiplier: 1

**Instrument :**  
 ECD\_P  
**ClientSampleId :**  
 PB168160BL

**Manual Integrations**  
**APPROVED**  
 Reviewed By :Yogesh Patel 05/30/2025  
 Supervised By :mohammad ahmed 05/30/2025

Integration File signal 1: autoint1.e  
 Integration File signal 2: autoint2.e  
 Quant Time: May 28 06:27:09 2025  
 Quant Method : Z:\pestpcbsrv\HPCHEM1\ECD\_P\methods\PP051925.M  
 Quant Title : GC EXTRACTABLES  
 QLast Update : Sat May 24 03:32:20 2025  
 Response via : Initial Calibration  
 Integrator: ChemStation

Volume Inj. : 2 µl  
 Signal #1 Phase : ZB-MR1 Signal #2 Phase: ZB-MR2  
 Signal #1 Info : 30Mx0.32mmx 0.50µ Signal #2 Info : 30M x 0.32mm x 0.25µm

Compound	RT#1	RT#2	Resp#1	Resp#2	ng/ml	ng/ml
-----						
System Monitoring Compounds						
1) SA Tetrachlo...	4.499	3.796	38873397	33545479	19.332	20.987
2) SA Decachlor...	10.196	8.813	33361135	24482400	20.478m	23.127

Target Compounds

-----  
 (f)=RT Delta > 1/2 Window (#)=Amounts differ by > 25% (m)=manual int.

Data Path : Z:\pestpcbsrv\HPCHEM1\ECD\_P\Data\PP052725\  
 Data File : PP072380.D  
 Signal(s) : Signal #1: ECD1A.ch Signal #2: ECD2B.ch  
 Acq On : 27 May 2025 17:16  
 Operator : YP\AJ  
 Sample : PB168160BL  
 Misc :  
 ALS Vial : 17 Sample Multiplier: 1

**Instrument :**

ECD\_P

**ClientSampleID :**

PB168160BL

**Manual Integrations**

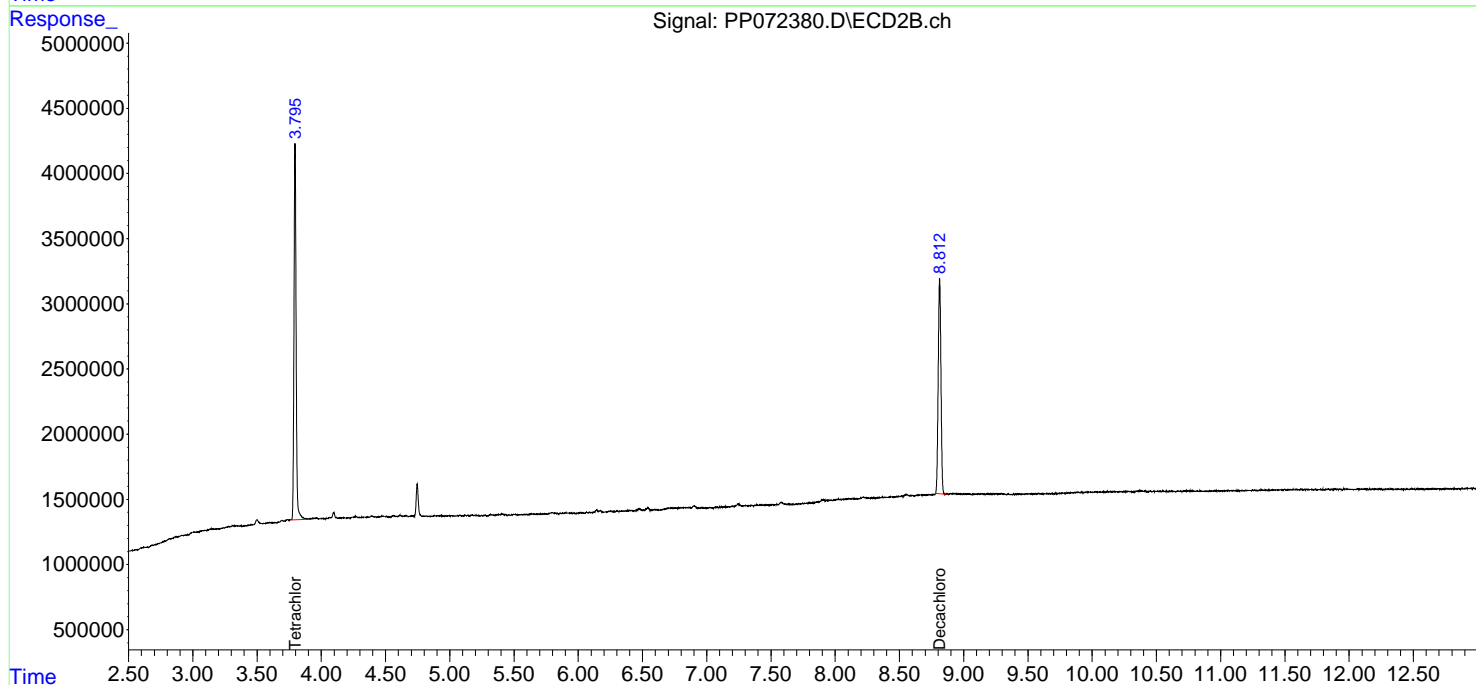
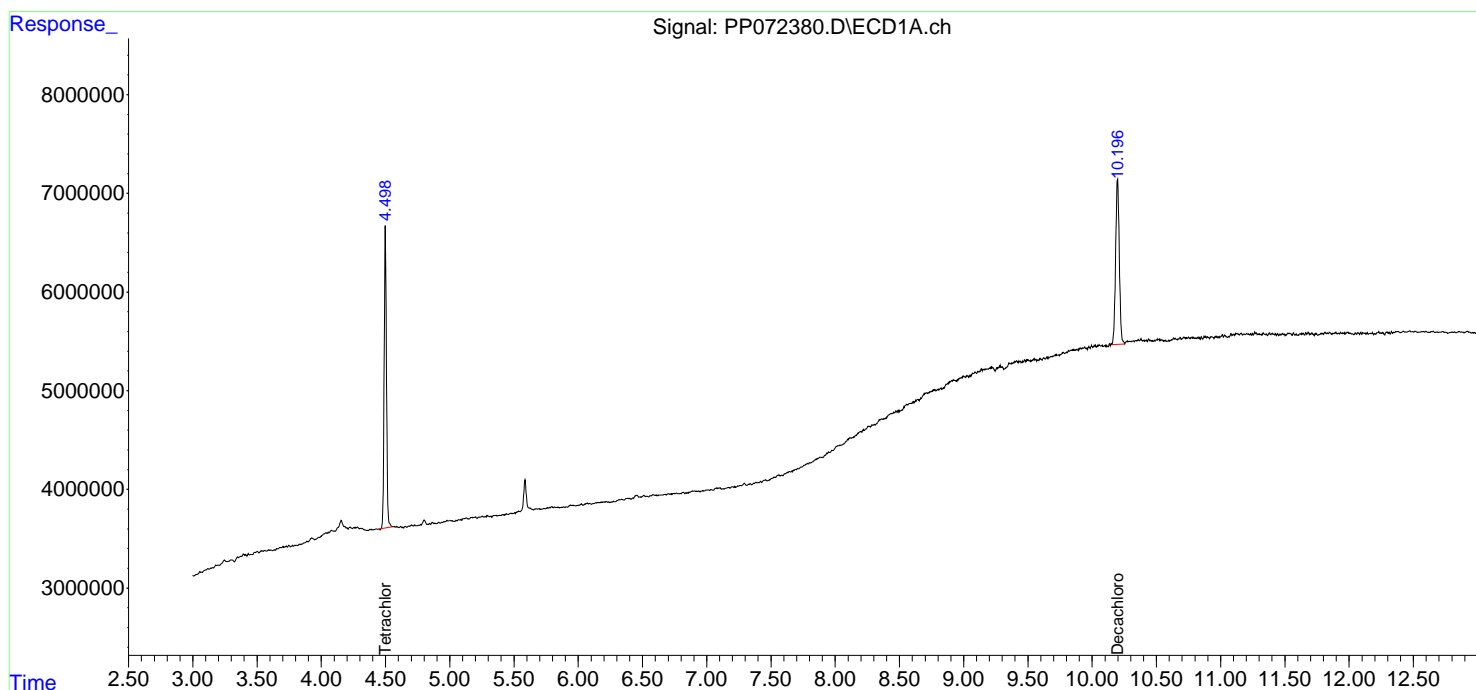
**APPROVED**

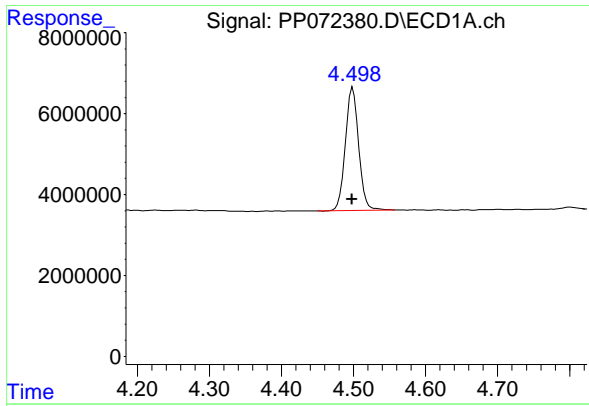
Reviewed By :Yogesh Patel 05/30/2025

Supervised By :mohammad ahmed 05/30/2025

Integration File signal 1: autoint1.e  
 Integration File signal 2: autoint2.e  
 Quant Time: May 28 06:27:09 2025  
 Quant Method : Z:\pestpcbsrv\HPCHEM1\ECD\_P\methods\PP051925.M  
 Quant Title : GC EXTRACTABLES  
 QLast Update : Sat May 24 03:32:20 2025  
 Response via : Initial Calibration  
 Integrator: ChemStation

Volume Inj. : 2 µl  
 Signal #1 Phase : ZB-MR1 Signal #2 Phase: ZB-MR2  
 Signal #1 Info : 30Mx0.32mmx 0.50µm Signal #2 Info : 30M x 0.32mm x 0.25µm





#1 Tetrachloro-m-xylene

R.T.: 4.499 min  
 Delta R.T.: 0.000 min  
 Response: 38873397  
 Conc: 19.33 ng/ml

Instrument :

ECD\_P

Client Sample Id :

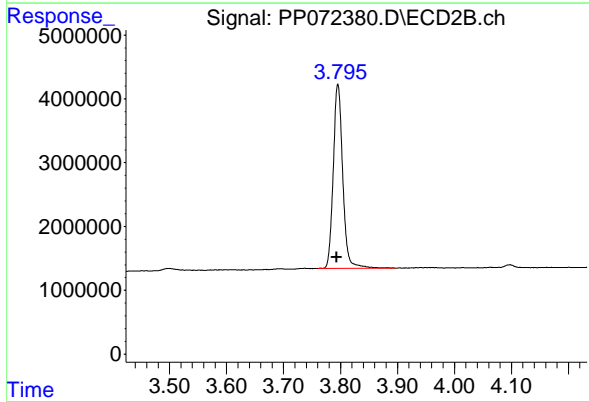
PB168160BL

Manual Integrations

APPROVED

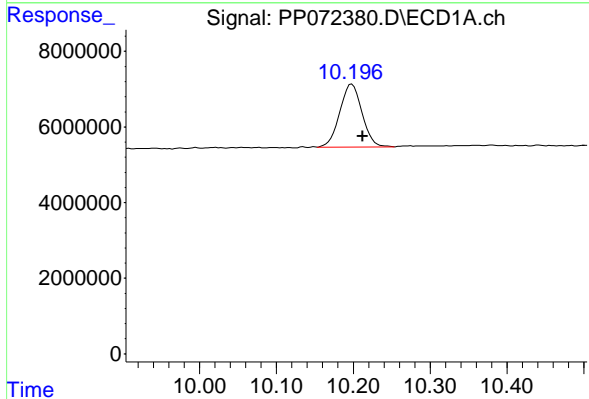
Reviewed By :Yogesh Patel 05/30/2025

Supervised By :mohammad ahmed 05/30/2025



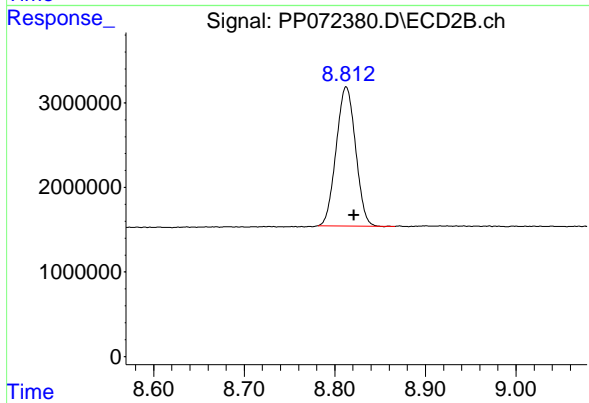
#1 Tetrachloro-m-xylene

R.T.: 3.796 min  
 Delta R.T.: 0.002 min  
 Response: 33545479  
 Conc: 20.99 ng/ml



#2 Decachlorobiphenyl

R.T.: 10.196 min  
 Delta R.T.: -0.016 min  
 Response: 33361135  
 Conc: 20.48 ng/ml m



#2 Decachlorobiphenyl

R.T.: 8.813 min  
 Delta R.T.: -0.008 min  
 Response: 24482400  
 Conc: 23.13 ng/ml