

Data Path : Z:\pestpcbsrv\HPCHEM1\ECD_P\Data\PP052924\New folder\
 Data File : PP065292.D
 Signal(s) : Signal #1: ECD1A.ch Signal #2: ECD2B.ch
 Acq On : 29 May 2024 10:25
 Operator : YP\AJ
 Sample : I.BLK
 Misc :
 ALS Vial : 2 Sample Multiplier: 1

Instrument :
 ECD_P
 ClientSampleId :
 I.BLK

Integration File signal 1: autoint1.e
 Integration File signal 2: autoint2.e
 Quant Time: May 30 07:24:03 2024
 Quant Method : Z:\pestpcbsrv\HPCHEM1\ECD_P\methods\PP052124.M
 Quant Title : GC EXTRACTABLES
 QLast Update : Tue May 21 18:19:41 2024
 Response via : Initial Calibration
 Integrator: ChemStation

Volume Inj. : 2 µl
 Signal #1 Phase : ZB-MR1 Signal #2 Phase: ZB-MR2
 Signal #1 Info : 30Mx0.32mmx 0.50µ Signal #2 Info : 30M x 0.32mm x 0.25µm

Compound	RT#1	RT#2	Resp#1	Resp#2	ng/ml	ng/ml

System Monitoring Compounds						
1) SA Tetrachlo...	4.466	3.749	30167111	28375025	19.114	18.691
2) SA Decachlor...	10.204	8.815	32696919	27259440	25.146	20.681
Target Compounds						
3) L1 AR-1016-1	0.000	4.853	0	345456	N.D.	7.328 #
4) L1 AR-1016-2	0.000	4.853f	0	345456	N.D.	5.141 #
5) L1 AR-1016-3	5.698f	0.000	430596	0	8.871	N.D. #
9) L2 AR-1221-2	4.771	4.054	516565	476058	34.309	31.680
12) L3 AR-1232-2	0.000	4.853f	0	345456	N.D.	10.586 #
15) L3 AR-1232-5	5.932f	0.000	209352	0	13.681	N.D. #
16) L4 AR-1242-1	0.000	4.853	0	345456	N.D.	8.595 #
17) L4 AR-1242-2	0.000	4.853f	0	345456	N.D.	6.115 #
18) L4 AR-1242-3	5.698f	0.000	430596	0	10.287	N.D. #
20) L4 AR-1242-5	6.533f	5.681	403899	371642	12.702	10.236
21) L5 AR-1248-1	0.000	4.853	0	345456	N.D.	11.462 #
22) L5 AR-1248-2	5.932f	5.095	209352	-109263	4.114	N.D. #
24) L5 AR-1248-4	6.533f	0.000	403899	0	7.376	N.D. #
25) L5 AR-1248-5	6.533f	5.681f	403899	371642	7.502	7.740
26) L6 AR-1254-1	6.485	5.681	3166488	371642	51.286	4.658 #
28) L6 AR-1254-3	7.069	0.000	6987858	0	75.121	N.D. #
32) L7 AR-1260-2	0.000	6.513f	0	1433161	N.D.	16.559 #
34) L7 AR-1260-4	8.071	0.000	281581	0	4.183	N.D. #
35) L7 AR-1260-5	8.390	0.000	323479	0	2.730	N.D. #
37) L8 AR-1262-2	8.390	0.000	323479	0	2.240	N.D. #
39) L8 AR-1262-4	8.823f	0.000	215737	0	2.534	N.D. #
42) L9 AR-1268-2	8.823f	0.000	215737	0	1.284	N.D. #

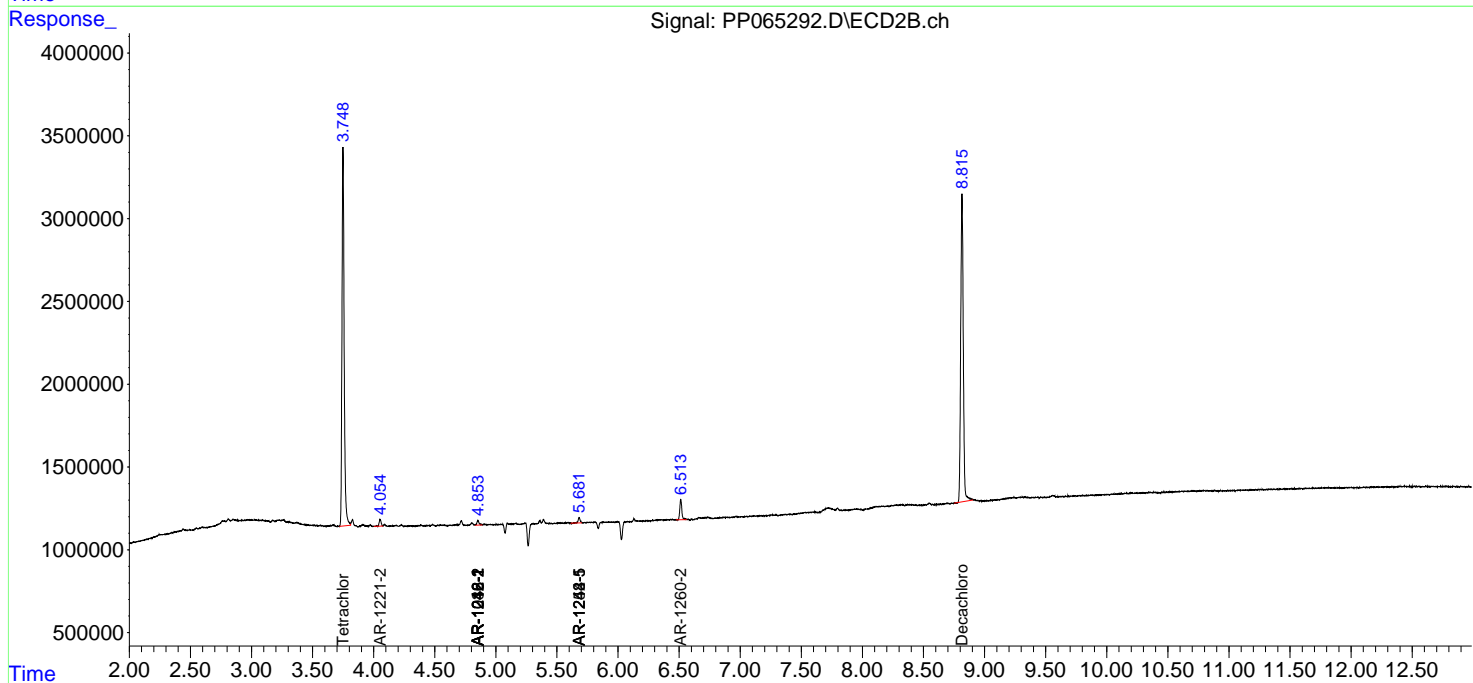
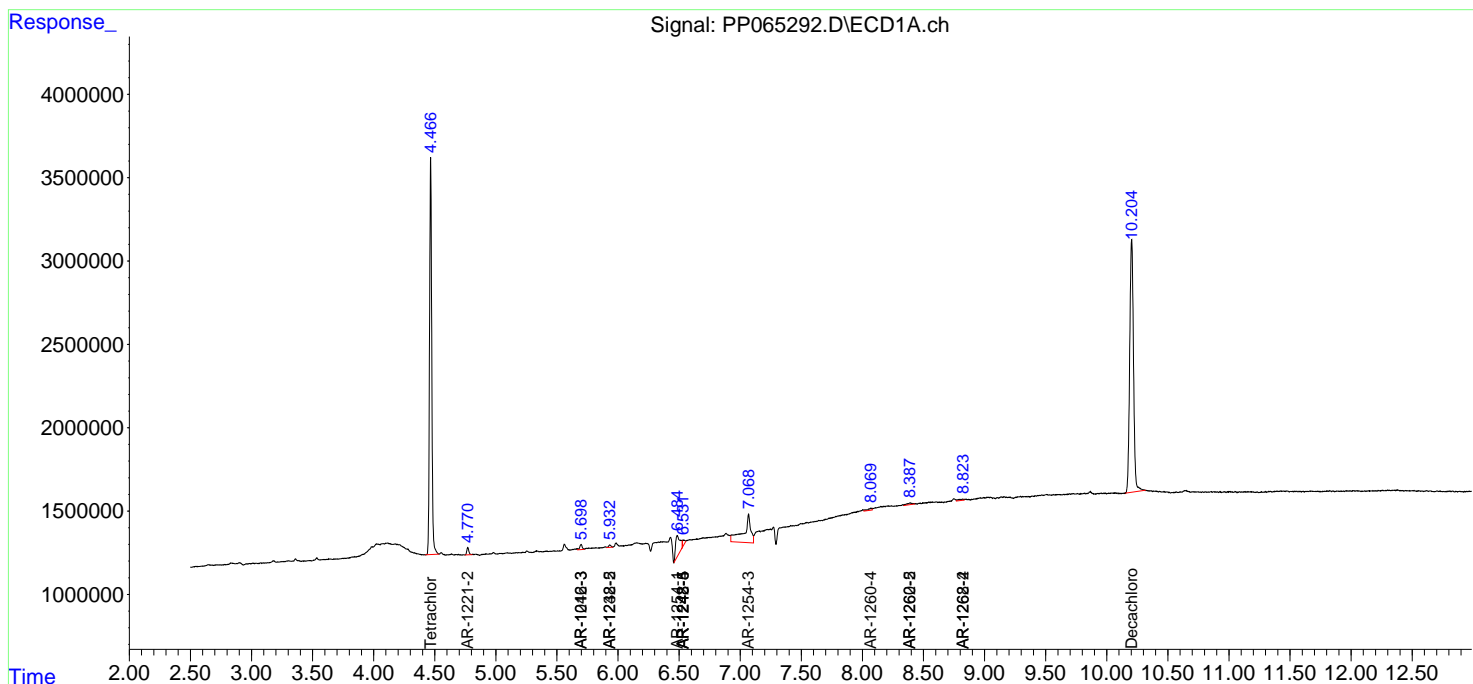
(f)=RT Delta > 1/2 Window (#)=Amounts differ by > 25% (m)=manual int.

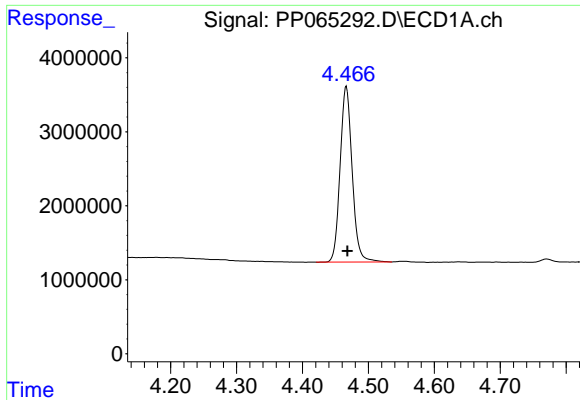
Data Path : Z:\pestpcbsrv\HPCHEM1\ECD_P\Data\PP052924\New folder\
 Data File : PP065292.D
 Signal(s) : Signal #1: ECD1A.ch Signal #2: ECD2B.ch
 Acq On : 29 May 2024 10:25
 Operator : YP\AJ
 Sample : I.BLK
 Misc :
 ALS Vial : 2 Sample Multiplier: 1

Instrument :
 ECD_P
 ClientSampleId :
 I.BLK

Integration File signal 1: autoint1.e
 Integration File signal 2: autoint2.e
 Quant Time: May 30 07:24:03 2024
 Quant Method : Z:\pestpcbsrv\HPCHEM1\ECD_P\methods\PP052124.M
 Quant Title : GC EXTRACTABLES
 QLast Update : Tue May 21 18:19:41 2024
 Response via : Initial Calibration
 Integrator: ChemStation

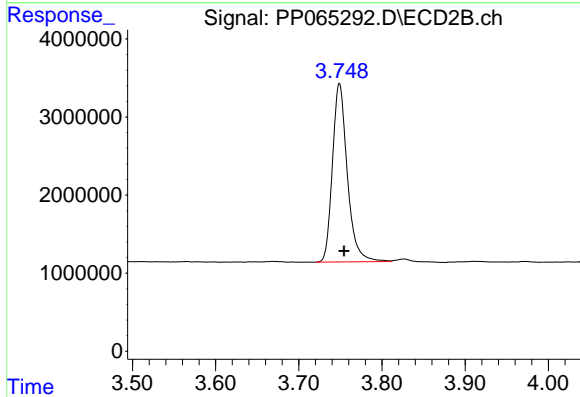
Volume Inj. : 2 µl
 Signal #1 Phase : ZB-MR1 Signal #2 Phase: ZB-MR2
 Signal #1 Info : 30Mx0.32mmx 0.50µ Signal #2 Info : 30M x 0.32mm x 0.25µm



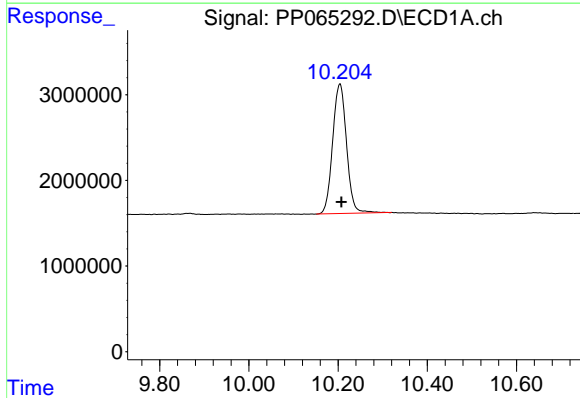


#1 Tetrachloro-m-xylene
 R.T.: 4.466 min
 Delta R.T.: -0.002 min
 Response: 30167111
 Conc: 19.11 ng/ml

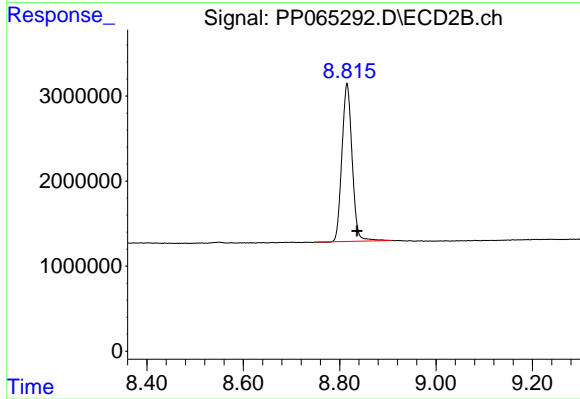
Instrument :
 ECD_P
 ClientSampleId :
 I.BLK



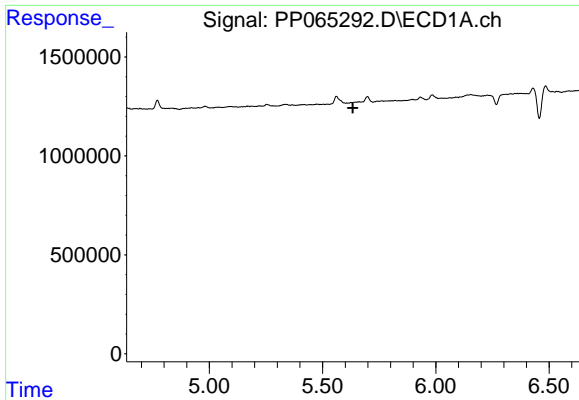
#1 Tetrachloro-m-xylene
 R.T.: 3.749 min
 Delta R.T.: -0.005 min
 Response: 28375025
 Conc: 18.69 ng/ml



#2 Decachlorobiphenyl
 R.T.: 10.204 min
 Delta R.T.: -0.003 min
 Response: 32696919
 Conc: 25.15 ng/ml



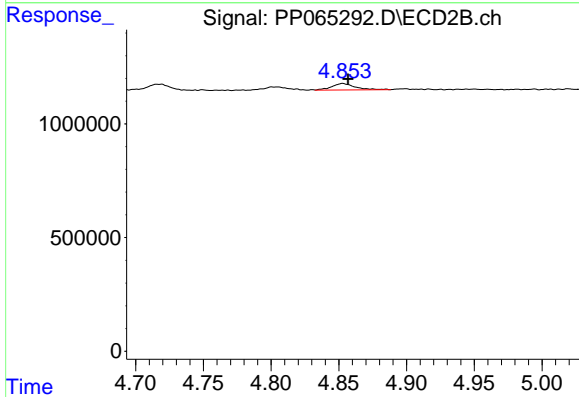
#2 Decachlorobiphenyl
 R.T.: 8.815 min
 Delta R.T.: -0.021 min
 Response: 27259440
 Conc: 20.68 ng/ml



#3 AR-1016-1

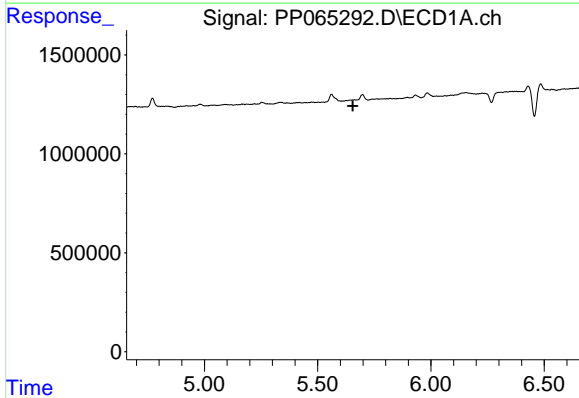
R.T.: 0.000 min
 Exp R.T.: 5.633 min
 Response: 0
 Conc: N.D.

Instrument :
 ECD_P
 ClientSampleId :
 I.BLK



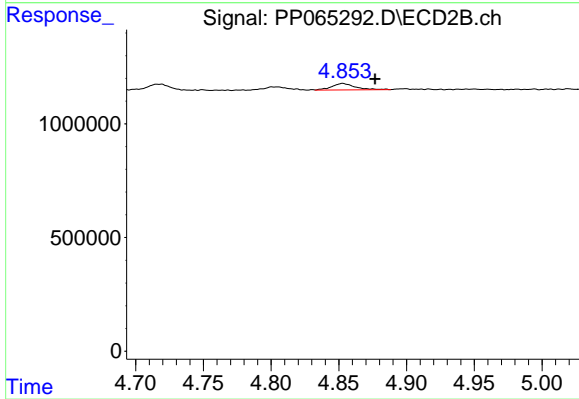
#3 AR-1016-1

R.T.: 4.853 min
 Delta R.T.: -0.004 min
 Response: 345456
 Conc: 7.33 ng/ml



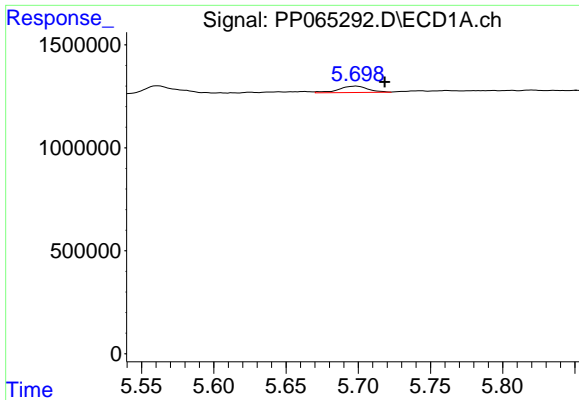
#4 AR-1016-2

R.T.: 0.000 min
 Exp R.T.: 5.656 min
 Response: 0
 Conc: N.D.



#4 AR-1016-2

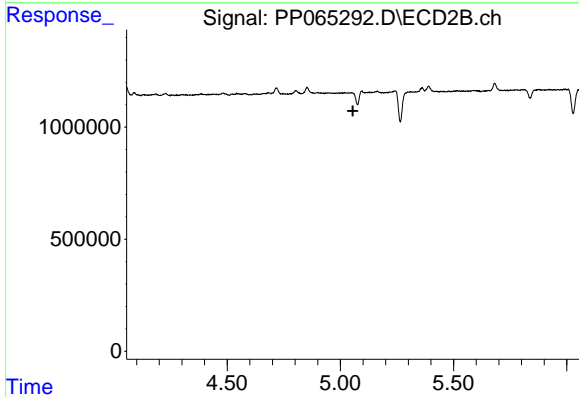
R.T.: 4.853 min
 Delta R.T.: -0.024 min
 Response: 345456
 Conc: 5.14 ng/ml



#5 AR-1016-3

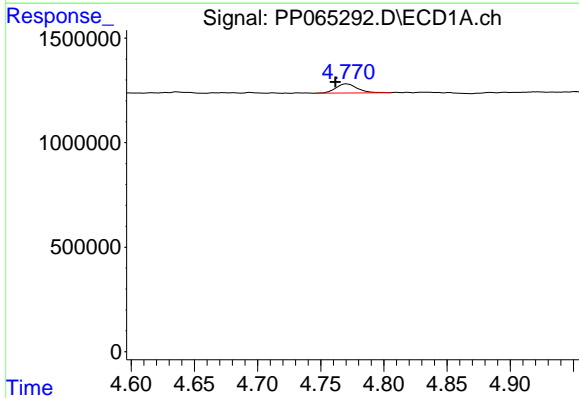
R.T.: 5.698 min
 Delta R.T.: -0.020 min
 Response: 430596
 Conc: 8.87 ng/ml

Instrument :
 ECD_P
 ClientSampleId :
 I.BLK



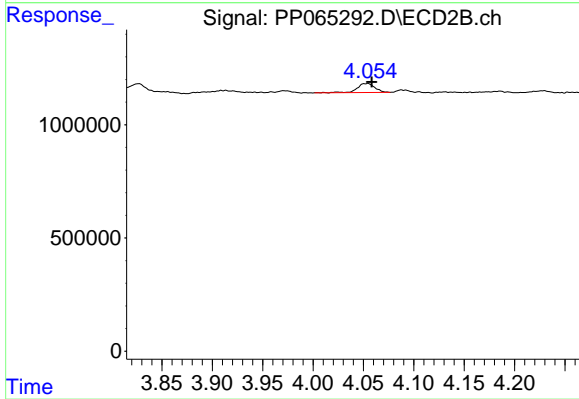
#5 AR-1016-3

R.T.: 0.000 min
 Exp R.T. : 5.056 min
 Response: 0
 Conc: N.D.



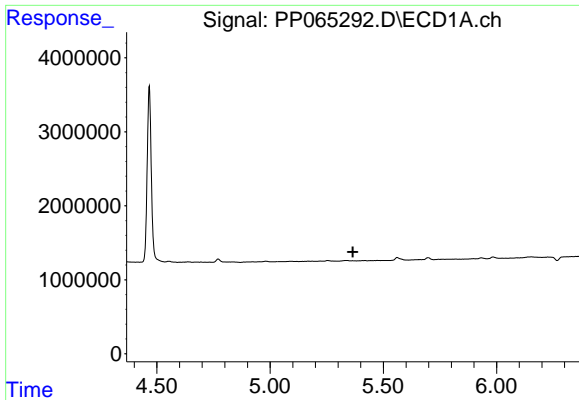
#9 AR-1221-2

R.T.: 4.771 min
 Delta R.T.: 0.009 min
 Response: 516565
 Conc: 34.31 ng/ml



#9 AR-1221-2

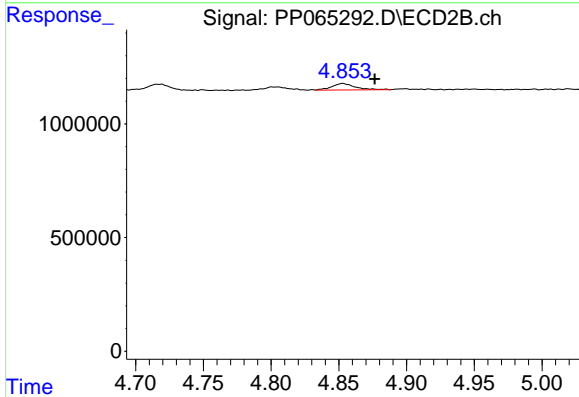
R.T.: 4.054 min
 Delta R.T.: -0.004 min
 Response: 476058
 Conc: 31.68 ng/ml



#12 AR-1232-2

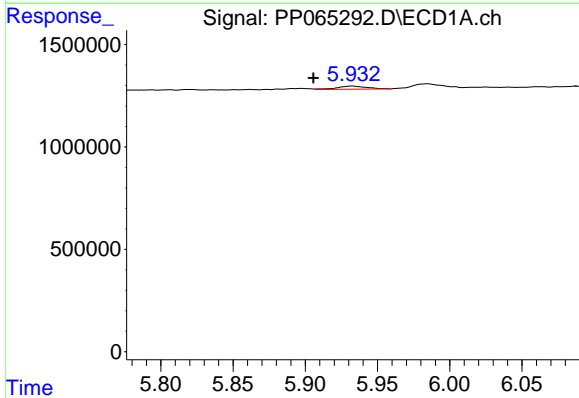
R.T.: 0.000 min
 Exp R.T.: 5.365 min
 Response: 0
 Conc: N.D.

Instrument :
 ECD_P
 ClientSampleId :
 I.BLK



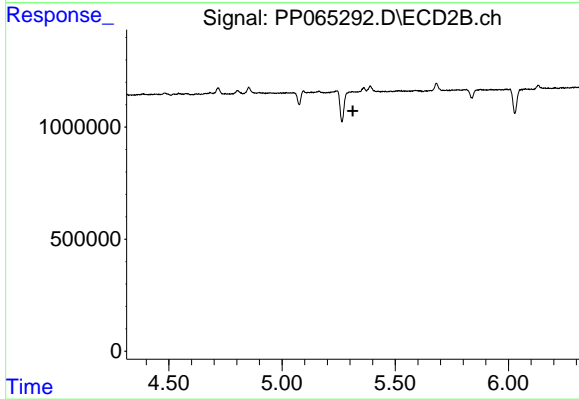
#12 AR-1232-2

R.T.: 4.853 min
 Delta R.T.: -0.024 min
 Response: 345456
 Conc: 10.59 ng/ml



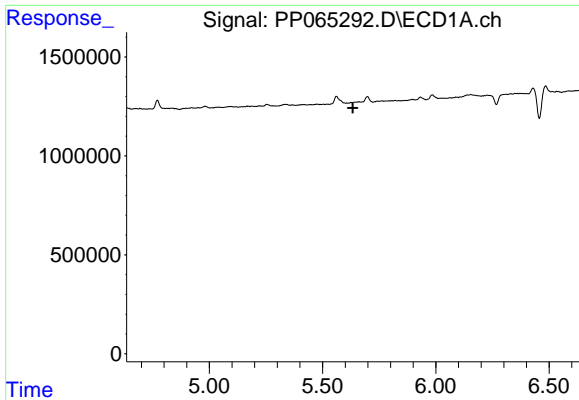
#15 AR-1232-5

R.T.: 5.932 min
 Delta R.T.: 0.027 min
 Response: 209352
 Conc: 13.68 ng/ml



#15 AR-1232-5

R.T.: 0.000 min
 Exp R.T.: 5.313 min
 Response: 0
 Conc: N.D.

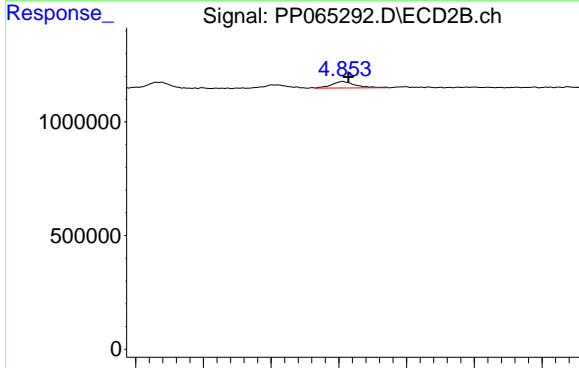


#16 AR-1242-1

R.T.: 0.000 min
 Exp R.T.: 5.634 min
 Response: 0
 Conc: N.D.

Instrument :
 ECD_P
 ClientSampleId :
 I.BLK

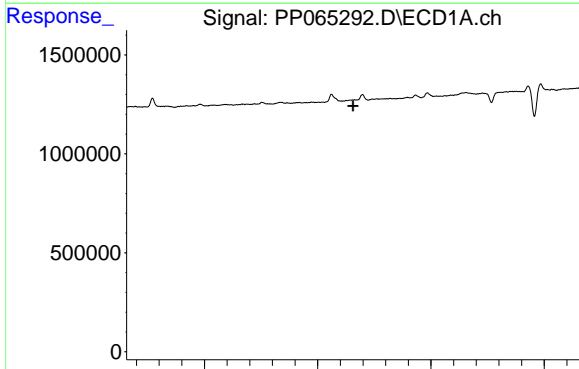
Time



#16 AR-1242-1

R.T.: 4.853 min
 Delta R.T.: -0.004 min
 Response: 345456
 Conc: 8.59 ng/ml

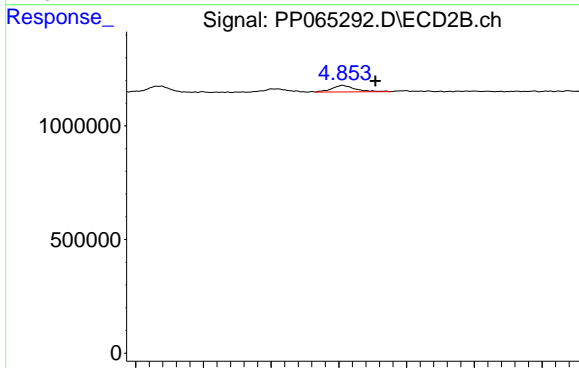
Time



#17 AR-1242-2

R.T.: 0.000 min
 Exp R.T.: 5.656 min
 Response: 0
 Conc: N.D.

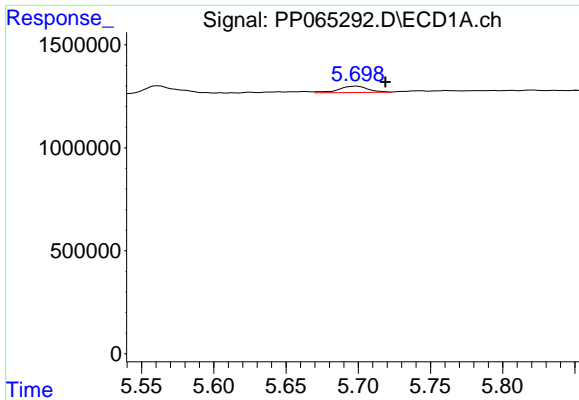
Time



#17 AR-1242-2

R.T.: 4.853 min
 Delta R.T.: -0.024 min
 Response: 345456
 Conc: 6.11 ng/ml

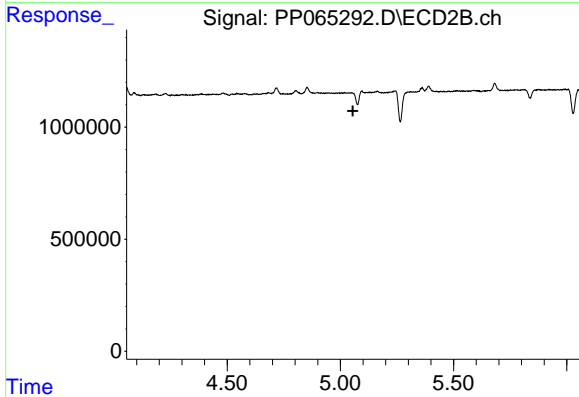
Time



#18 AR-1242-3

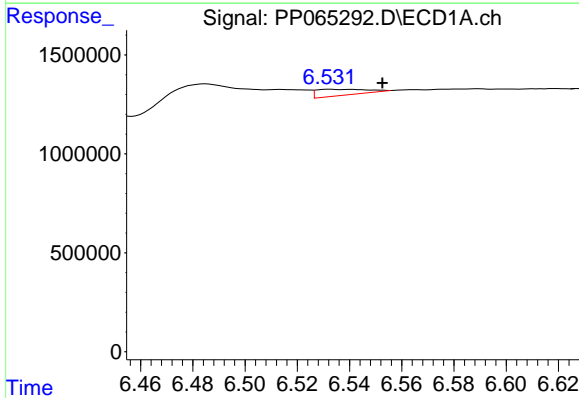
R.T.: 5.698 min
 Delta R.T.: -0.020 min
 Response: 430596
 Conc: 10.29 ng/ml

Instrument :
 ECD_P
 ClientSampleId :
 I.BLK



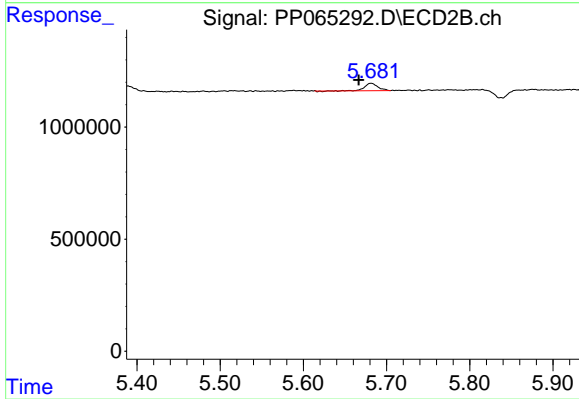
#18 AR-1242-3

R.T.: 0.000 min
 Exp R.T. : 5.056 min
 Response: 0
 Conc: N.D.



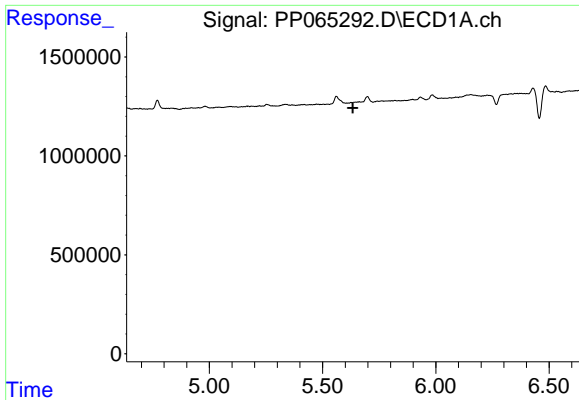
#20 AR-1242-5

R.T.: 6.533 min
 Delta R.T.: -0.019 min
 Response: 403899
 Conc: 12.70 ng/ml



#20 AR-1242-5

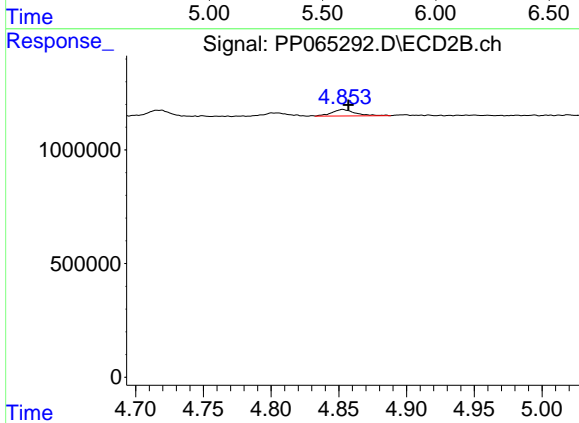
R.T.: 5.681 min
 Delta R.T.: 0.015 min
 Response: 371642
 Conc: 10.24 ng/ml



#21 AR-1248-1

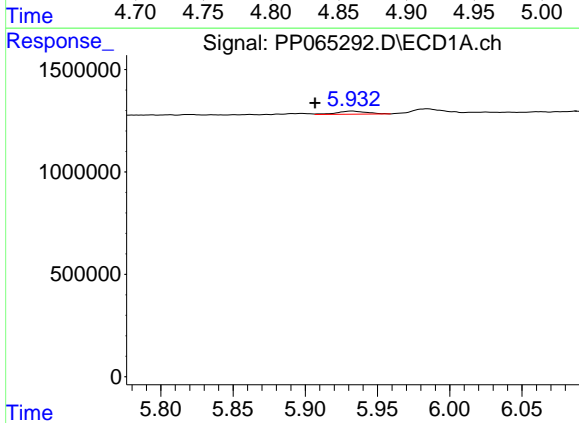
R.T.: 0.000 min
 Exp R.T.: 5.634 min
 Response: 0
 Conc: N.D.

Instrument :
 ECD_P
 ClientSampleId :
 I.BLK



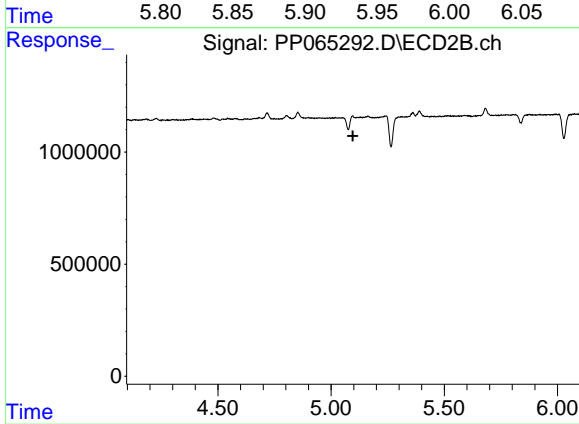
#21 AR-1248-1

R.T.: 4.853 min
 Delta R.T.: -0.004 min
 Response: 345456
 Conc: 11.46 ng/ml



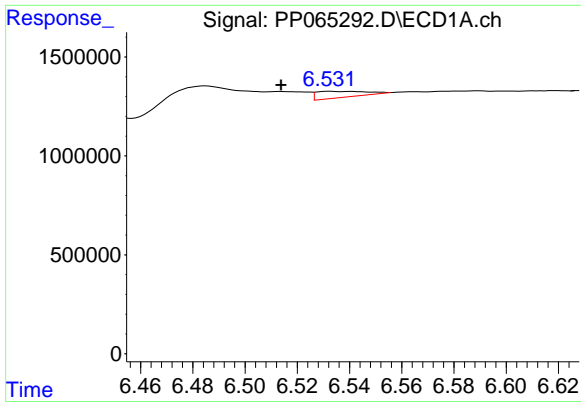
#22 AR-1248-2

R.T.: 5.932 min
 Delta R.T.: 0.026 min
 Response: 209352
 Conc: 4.11 ng/ml



#22 AR-1248-2

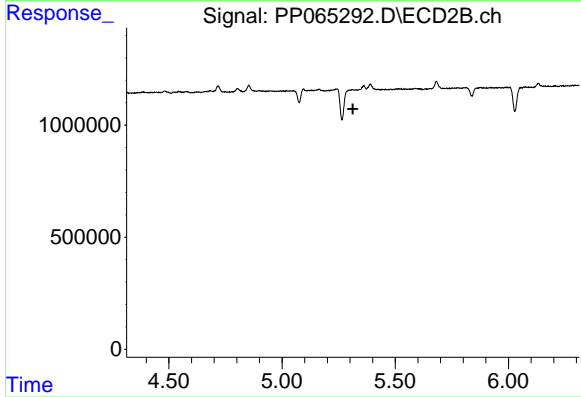
R.T.: 5.095 min
 Delta R.T.: -0.001 min
 Response: -109263
 Conc: N.D.



#24 AR-1248-4

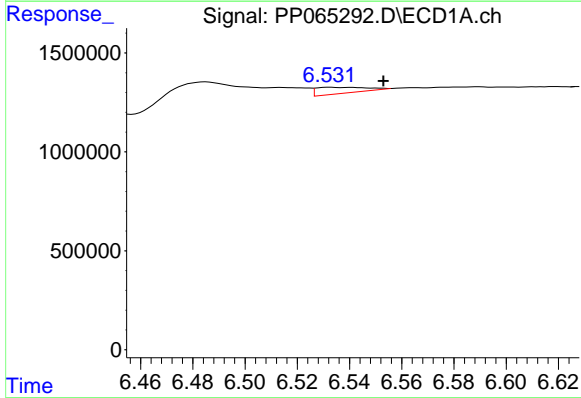
R.T.: 6.533 min
 Delta R.T.: 0.019 min
 Response: 403899
 Conc: 7.38 ng/ml

Instrument :
 ECD_P
 ClientSampleId :
 I.BLK



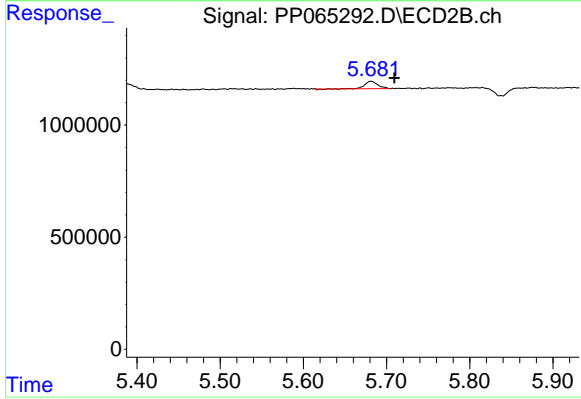
#24 AR-1248-4

R.T.: 0.000 min
 Exp R.T. : 5.313 min
 Response: 0
 Conc: N.D.



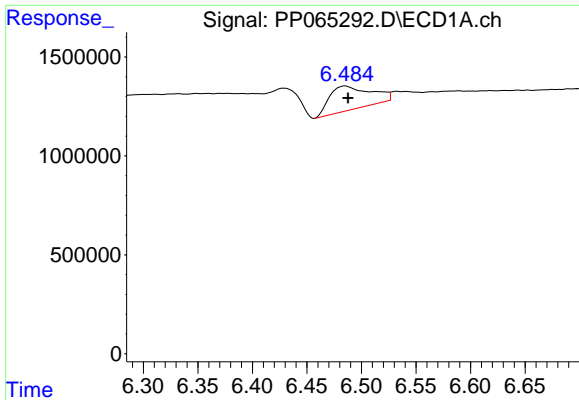
#25 AR-1248-5

R.T.: 6.533 min
 Delta R.T.: -0.020 min
 Response: 403899
 Conc: 7.50 ng/ml



#25 AR-1248-5

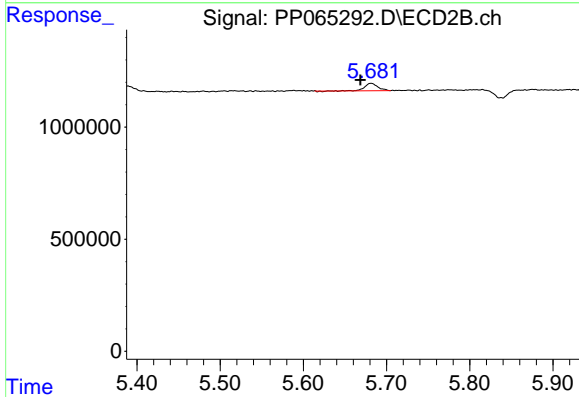
R.T.: 5.681 min
 Delta R.T.: -0.028 min
 Response: 371642
 Conc: 7.74 ng/ml



#26 AR-1254-1

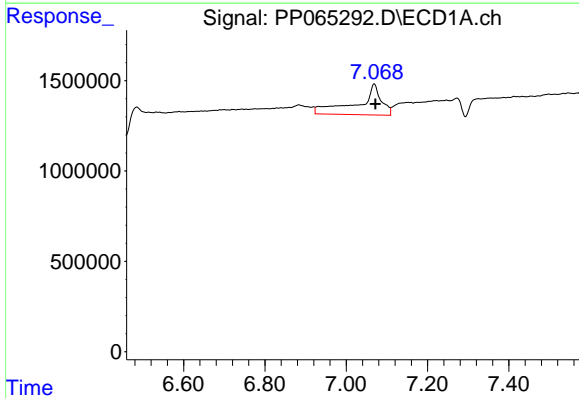
R.T.: 6.485 min
 Delta R.T.: -0.003 min
 Response: 3166488
 Conc: 51.29 ng/ml

Instrument :
 ECD_P
 ClientSampleId :
 I.BLK



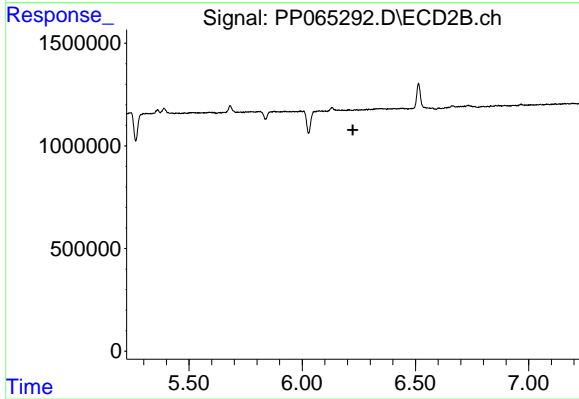
#26 AR-1254-1

R.T.: 5.681 min
 Delta R.T.: 0.013 min
 Response: 371642
 Conc: 4.66 ng/ml



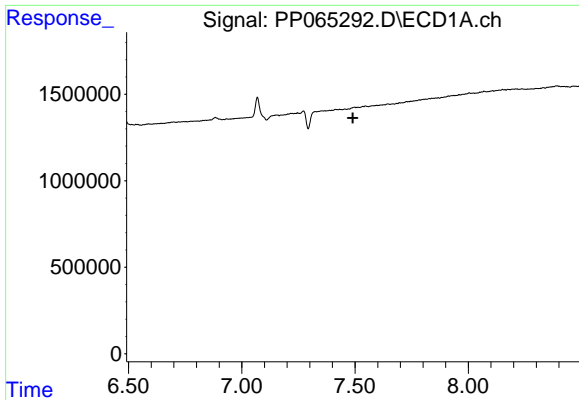
#28 AR-1254-3

R.T.: 7.069 min
 Delta R.T.: -0.003 min
 Response: 6987858
 Conc: 75.12 ng/ml



#28 AR-1254-3

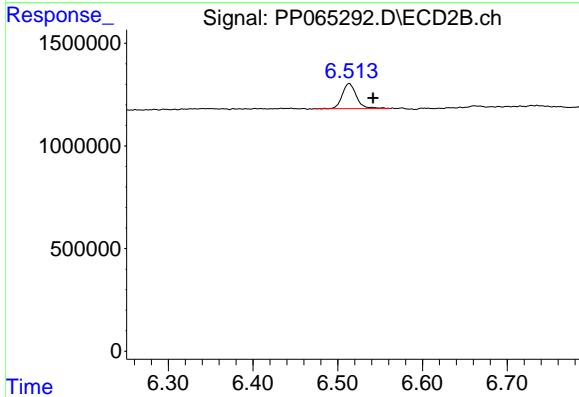
R.T.: 0.000 min
 Exp R.T. : 6.223 min
 Response: 0
 Conc: N.D.



#32 AR-1260-2

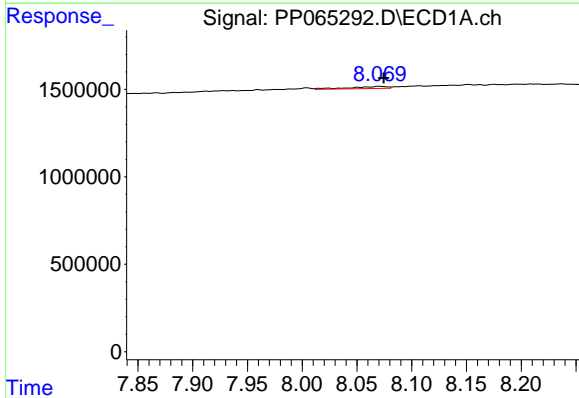
R.T.: 0.000 min
 Exp R.T.: 7.490 min
 Response: 0
 Conc: N.D.

Instrument :
 ECD_P
 ClientSampleId :
 I.BLK



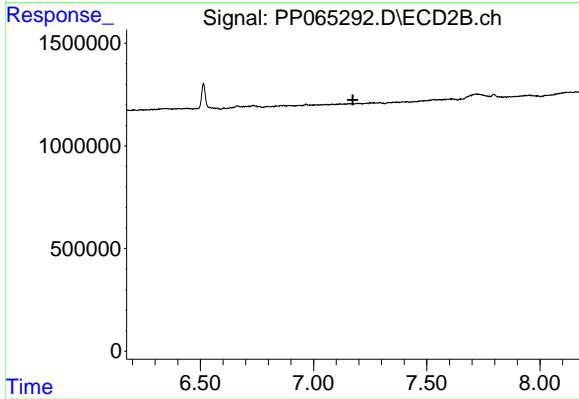
#32 AR-1260-2

R.T.: 6.513 min
 Delta R.T.: -0.028 min
 Response: 1433161
 Conc: 16.56 ng/ml



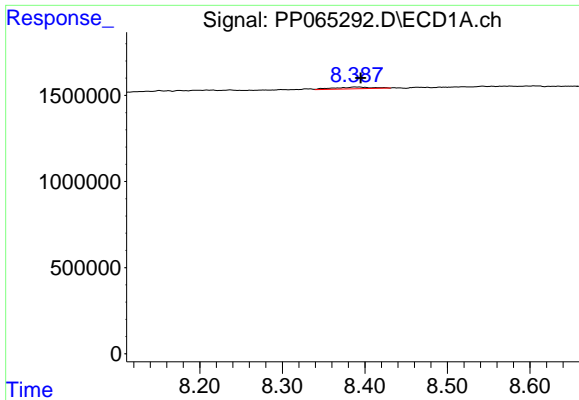
#34 AR-1260-4

R.T.: 8.071 min
 Delta R.T.: -0.004 min
 Response: 281581
 Conc: 4.18 ng/ml



#34 AR-1260-4

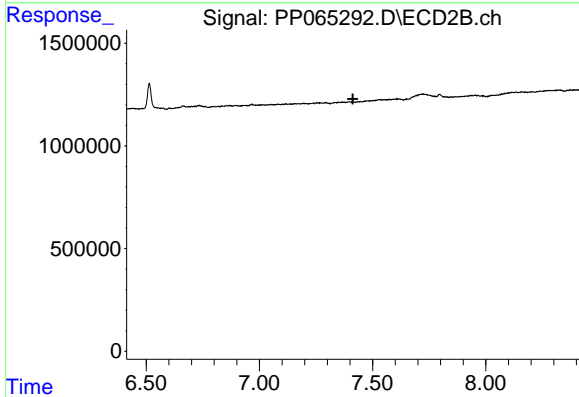
R.T.: 0.000 min
 Exp R.T.: 7.174 min
 Response: 0
 Conc: N.D.



#35 AR-1260-5

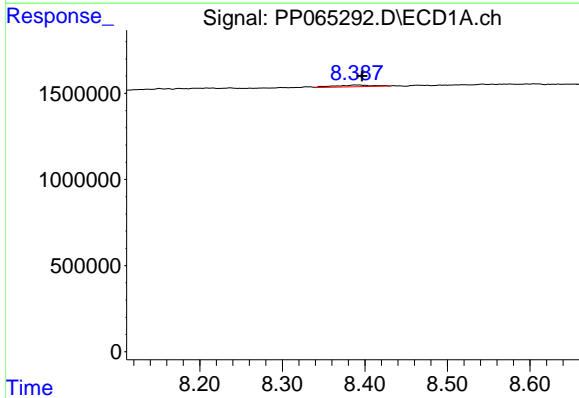
R.T.: 8.390 min
 Delta R.T.: -0.005 min
 Response: 323479
 Conc: 2.73 ng/ml

Instrument :
 ECD_P
 ClientSampleId :
 I.BLK



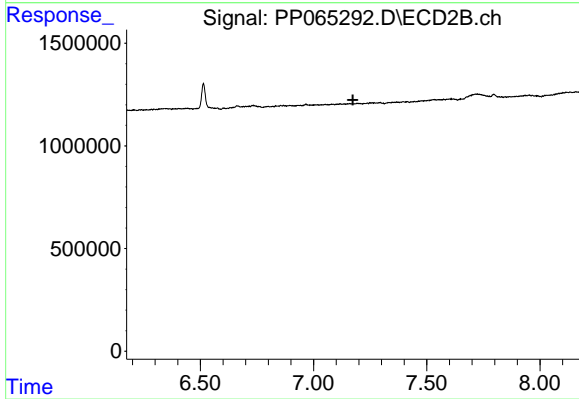
#35 AR-1260-5

R.T.: 0.000 min
 Exp R.T. : 7.413 min
 Response: 0
 Conc: N.D.



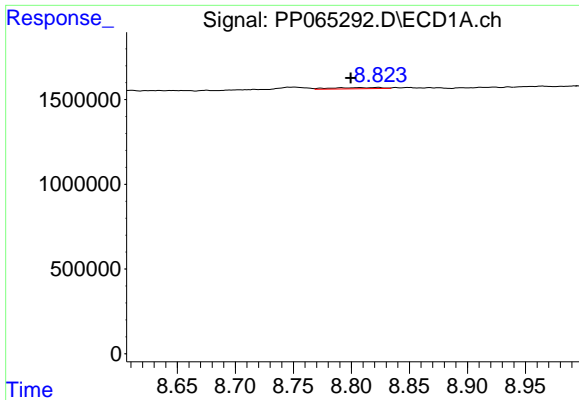
#37 AR-1262-2

R.T.: 8.390 min
 Delta R.T.: -0.006 min
 Response: 323479
 Conc: 2.24 ng/ml



#37 AR-1262-2

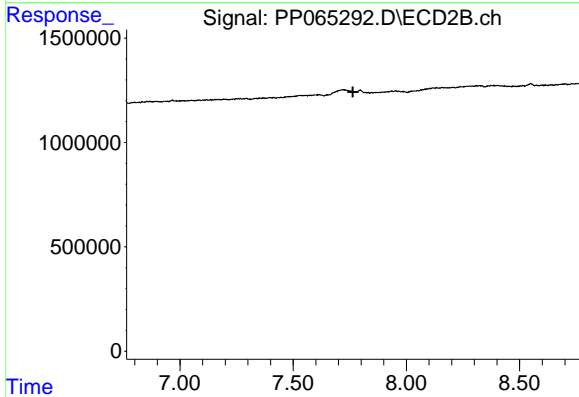
R.T.: 0.000 min
 Exp R.T. : 7.174 min
 Response: 0
 Conc: N.D.



#39 AR-1262-4

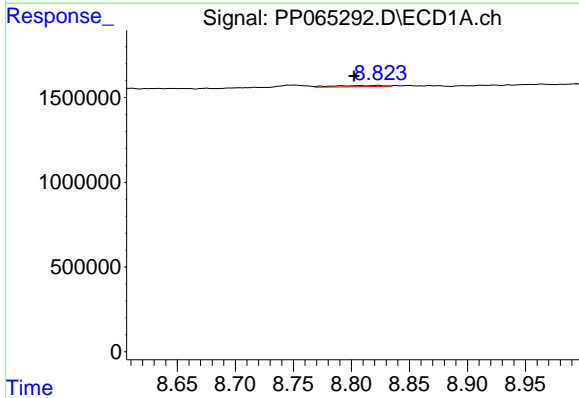
R.T.: 8.823 min
 Delta R.T.: 0.023 min
 Response: 215737
 Conc: 2.53 ng/ml

Instrument :
 ECD_P
 ClientSampleId :
 I.BLK



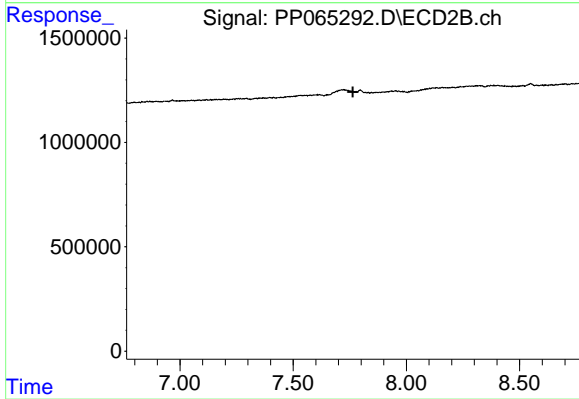
#39 AR-1262-4

R.T.: 0.000 min
 Exp R.T. : 7.764 min
 Response: 0
 Conc: N.D.



#42 AR-1268-2

R.T.: 8.823 min
 Delta R.T.: 0.020 min
 Response: 215737
 Conc: 1.28 ng/ml



#42 AR-1268-2

R.T.: 0.000 min
 Exp R.T. : 7.764 min
 Response: 0
 Conc: N.D.