

Data Path : Z:\pestpcbsrv\HPCHEM1\ECD\_P\Data\PP053024\Not review data\  
 Data File : PP065346.D  
 Signal(s) : Signal #1: ECD1A.ch Signal #2: ECD2B.ch  
 Acq On : 30 May 2024 11:22  
 Operator : YP\AJ  
 Sample : AR1242CCC500  
 Misc :  
 ALS Vial : 4 Sample Multiplier: 1

**Instrument :**  
 ECD\_P  
**ClientSampleId :**  
 AR1242CCC500

Integration File signal 1: autoint1.e  
 Integration File signal 2: autoint2.e  
 Quant Time: May 31 09:08:26 2024  
 Quant Method : Z:\pestpcbsrv\HPCHEM1\ECD\_P\methods\PP052124.M  
 Quant Title : GC EXTRACTABLES  
 QLast Update : Tue May 21 18:19:41 2024  
 Response via : Initial Calibration  
 Integrator: ChemStation

Volume Inj. : 2 µl  
 Signal #1 Phase : ZB-MR1 Signal #2 Phase: ZB-MR2  
 Signal #1 Info : 30Mx0.32mmx 0.50µ Signal #2 Info : 30M x 0.32mm x 0.25µm

Compound	RT#1	RT#2	Resp#1	Resp#2	ng/ml	ng/ml
-----						
System Monitoring Compounds						
1) SA Tetrachlo...	4.470	3.749	72764284	64263874	46.103	42.332
2) SA Decachlor...	10.209	8.813	71005576	60715705	54.607	46.063
Target Compounds						
3) L1 AR-1016-1	5.636	4.848	20386248	17745290	428.996	376.409
4) L1 AR-1016-2	5.657	4.867	30162393	24607656	401.580	366.187
5) L1 AR-1016-3	5.720	5.045	19893652	13343401	409.862	363.882
6) L1 AR-1016-4	5.818	5.086	15815027	11019898	418.069	354.869
7) L1 AR-1016-5	6.112	5.302	16118622	15063977	423.818	376.571
8) L2 AR-1221-1	4.672	3.962	2392192	2013680	119.296	101.550
9) L2 AR-1221-2	4.764	4.051	3487493	3231038	231.628	215.015
10) L2 AR-1221-3	4.839	4.128	12250446	11295066	268.911	255.376
11) L3 AR-1232-1	4.839	4.128	12250446	11295066	325.229	306.043
12) L3 AR-1232-2	5.367	4.867	17295317	24607656	811.929	754.038
13) L3 AR-1232-3	5.657	5.045	30162393	13343401	828.398	757.076
14) L3 AR-1232-4	5.818	5.128	15815027	14072749	856.198	839.263
15) L3 AR-1232-5	5.908	5.302	14403066	15063977	941.219	834.166
16) L4 AR-1242-1	5.636	4.848	20386248	17745290	493.977	441.504
17) L4 AR-1242-2	5.657	4.867	30162393	24607656	467.595	435.580
18) L4 AR-1242-3	5.720	5.045	19893652	13343401	475.248	433.978
19) L4 AR-1242-4	5.818	5.128	15815027	14072749	481.755	433.932
20) L4 AR-1242-5	6.554	5.656	16132680	16905023	507.336	465.587
21) L5 AR-1248-1	5.636	4.848	20386248	17745290	614.221	588.762
22) L5 AR-1248-2	5.908	5.086	14403066	11019898	283.012	242.416
23) L5 AR-1248-3	6.112	5.128	16118622	14072749	295.385	295.896
24) L5 AR-1248-4	6.515	5.302	15369692	15063977	280.684	272.814
25) L5 AR-1248-5	6.554	5.698	16132680	14041803	299.646	292.424
26) L6 AR-1254-1	6.487	5.656	11653035	16905023	188.740	211.901
27) L6 AR-1254-2	6.711	5.803	14254484	4638100	155.376	65.770 #
28) L6 AR-1254-3	7.072	6.211	6110987	5704410	65.694	51.759
29) L6 AR-1254-4	7.357	6.439	4107946	4486702	67.764	79.475
30) L6 AR-1254-5	7.775	6.860	1319703	1454317	18.786	15.608
31) L7 AR-1260-1	7.237	6.358	715287	2263190	10.364	30.133 #
32) L7 AR-1260-2	7.492	6.528	1086529	829531	14.069	9.584 #
33) L7 AR-1260-3	7.835	6.684	147787	678988	2.469	7.975 #
34) L7 AR-1260-4	8.062	7.197f	641566	358495	9.530	5.349 #
35) L7 AR-1260-5	8.392	0.000	142911	0	1.206	N.D. #
36) L8 AR-1262-1	7.910	0.000	50071	0	1.304	N.D. #
37) L8 AR-1262-2	8.392	7.197f	142911	358495	0.990	4.065 #
43) L9 AR-1268-3	9.031	0.000	364389	0	2.409	N.D. #
45) L9 AR-1268-5	9.869	0.000	428692	0	0.946	N.D. #

Data Path : Z:\pestpcbsrv\HPCHEM1\ECD\_P\Data\PP053024\Not review data\  
Data File : PP065346.D  
Signal(s) : Signal #1: ECD1A.ch Signal #2: ECD2B.ch  
Acq On : 30 May 2024 11:22  
Operator : YP\AJ  
Sample : AR1242CCC500  
Misc :  
ALS Vial : 4 Sample Multiplier: 1

Instrument :  
ECD\_P  
ClientSampleId :  
AR1242CCC500

Integration File signal 1: autoint1.e  
Integration File signal 2: autoint2.e  
Quant Time: May 31 09:08:26 2024  
Quant Method : Z:\pestpcbsrv\HPCHEM1\ECD\_P\methods\PP052124.M  
Quant Title : GC EXTRACTABLES  
QLast Update : Tue May 21 18:19:41 2024  
Response via : Initial Calibration  
Integrator: ChemStation

Volume Inj. : 2 µl  
Signal #1 Phase : ZB-MR1 Signal #2 Phase: ZB-MR2  
Signal #1 Info : 30Mx0.32mmx 0.50µ Signal #2 Info : 30M x 0.32mm x 0.25µm

Compound	RT#1	RT#2	Resp#1	Resp#2	ng/ml	ng/ml
----------	------	------	--------	--------	-------	-------

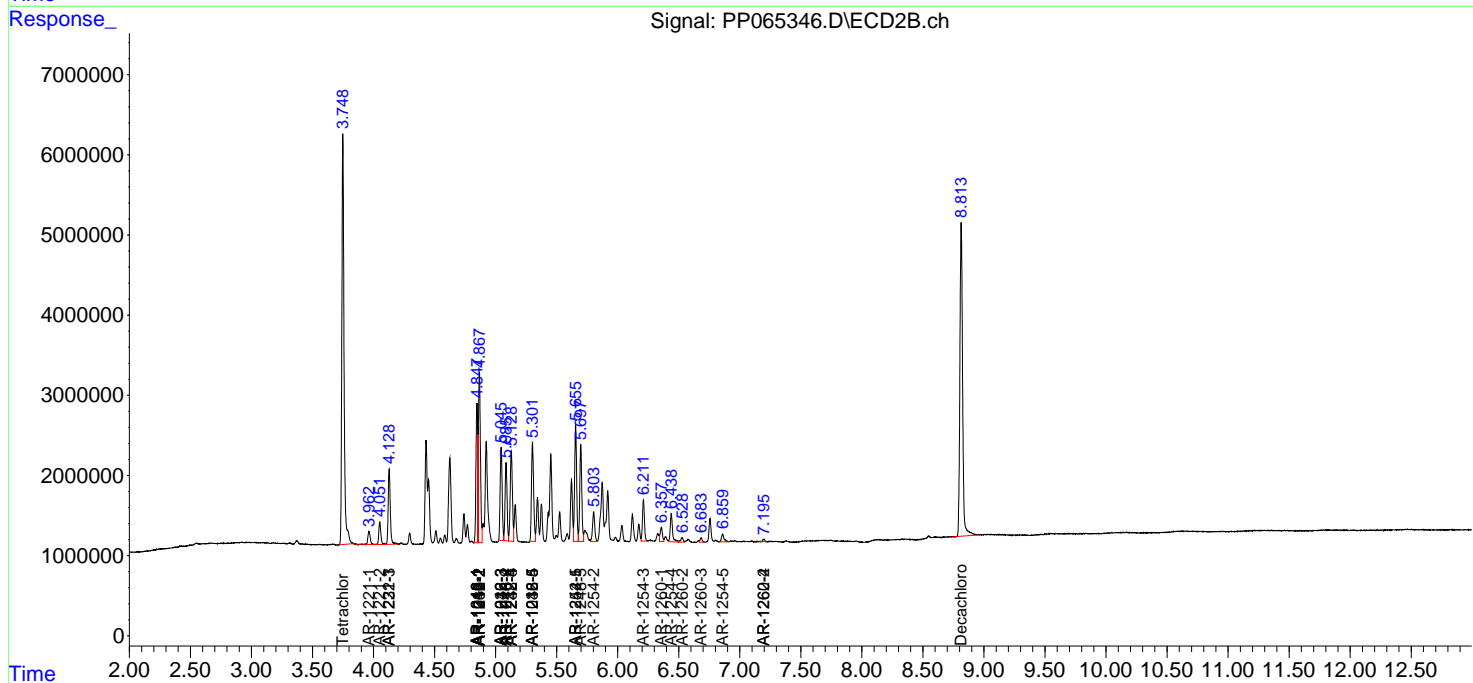
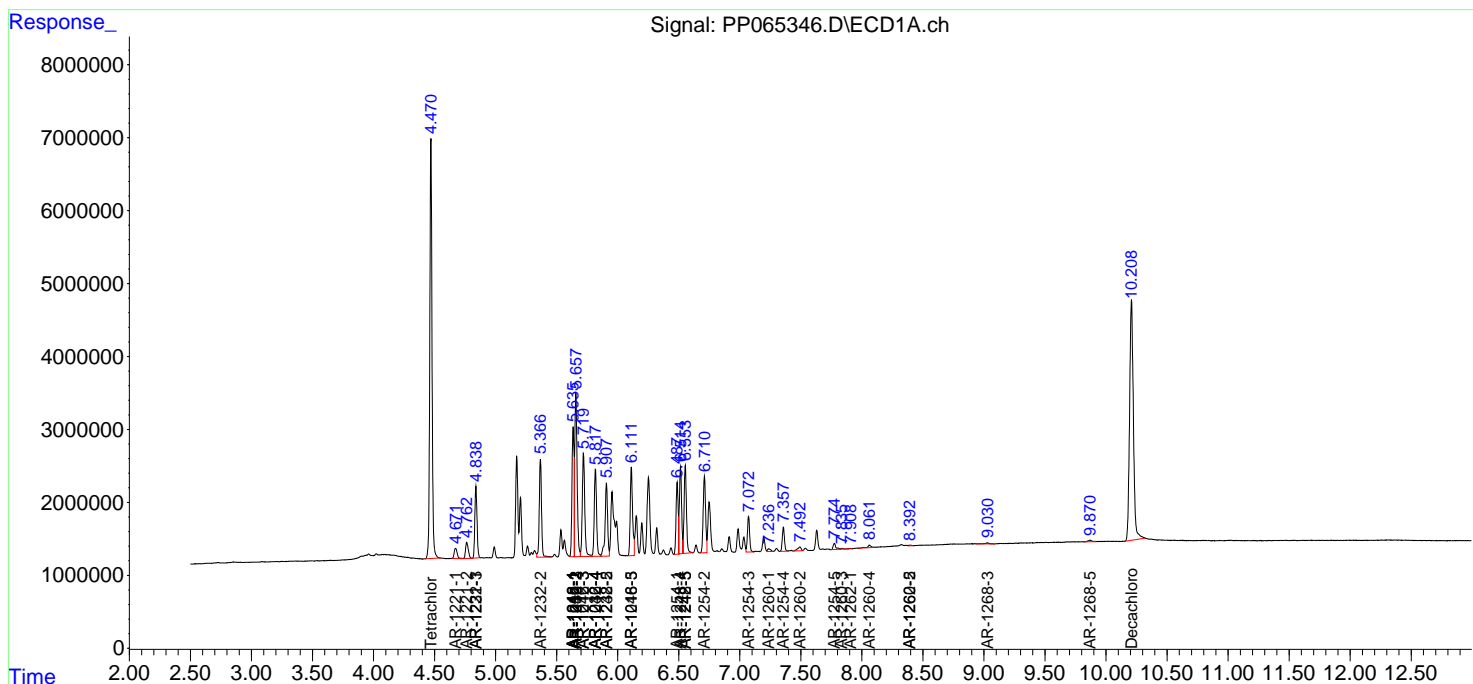
-----  
(f)=RT Delta > 1/2 Window (#)=Amounts differ by > 25% (m)=manual int.

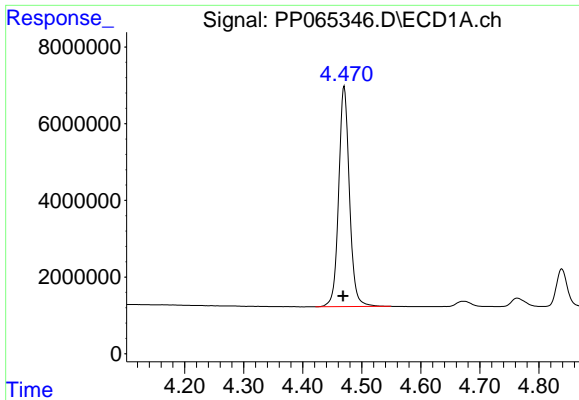
Data Path : Z:\pestpcbsrv\HPCHEM1\ECD\_P\Data\PP053024\Not review data\  
 Data File : PP065346.D  
 Signal(s) : Signal #1: ECD1A.ch Signal #2: ECD2B.ch  
 Acq On : 30 May 2024 11:22  
 Operator : YP\AJ  
 Sample : AR1242CCC500  
 Misc :  
 ALS Vial : 4 Sample Multiplier: 1

Instrument :  
 ECD\_P  
 ClientSampleId :  
 AR1242CCC500

Integration File signal 1: autoint1.e  
 Integration File signal 2: autoint2.e  
 Quant Time: May 31 09:08:26 2024  
 Quant Method : Z:\pestpcbsrv\HPCHEM1\ECD\_P\methods\PP052124.M  
 Quant Title : GC EXTRACTABLES  
 QLast Update : Tue May 21 18:19:41 2024  
 Response via : Initial Calibration  
 Integrator: ChemStation

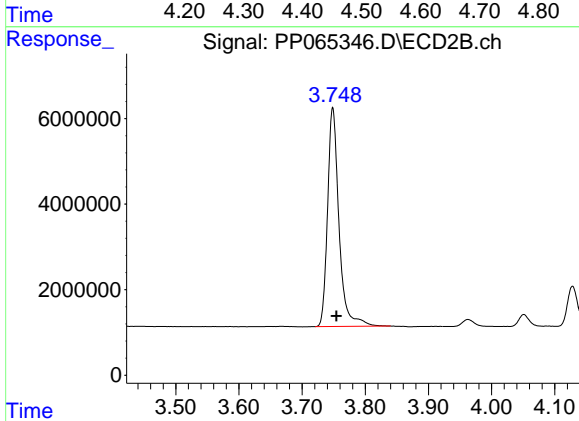
Volume Inj. : 2 µl  
 Signal #1 Phase : ZB-MR1 Signal #2 Phase: ZB-MR2  
 Signal #1 Info : 30Mx0.32mmx 0.50µ Signal #2 Info : 30M x 0.32mm x 0.25µm



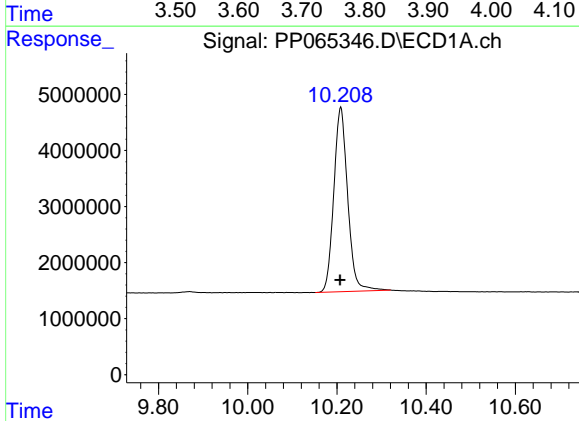


#1 Tetrachloro-m-xylene  
 R.T.: 4.470 min  
 Delta R.T.: 0.002 min  
 Response: 72764284  
 Conc: 46.10 ng/ml

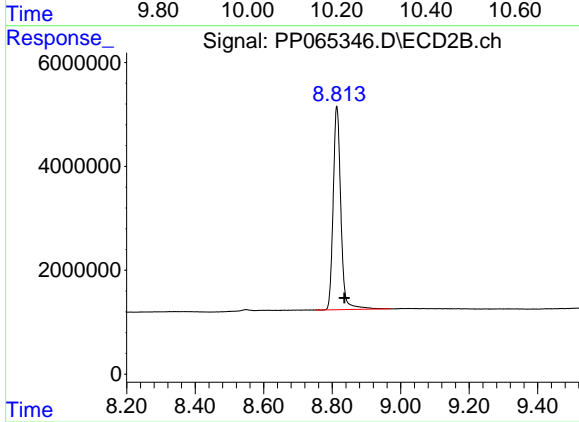
Instrument :  
 ECD\_P  
 ClientSampleId :  
 AR1242CCC500



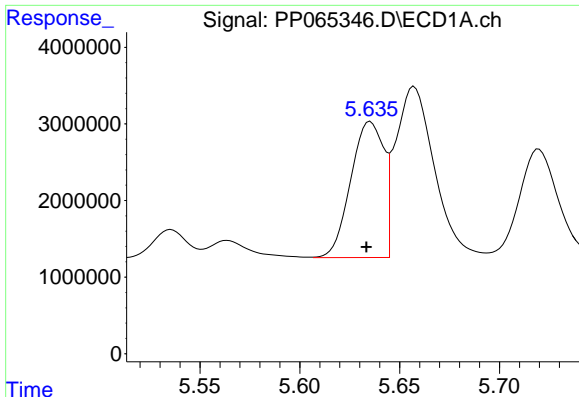
#1 Tetrachloro-m-xylene  
 R.T.: 3.749 min  
 Delta R.T.: -0.006 min  
 Response: 64263874  
 Conc: 42.33 ng/ml



#2 Decachlorobiphenyl  
 R.T.: 10.209 min  
 Delta R.T.: 0.001 min  
 Response: 71005576  
 Conc: 54.61 ng/ml



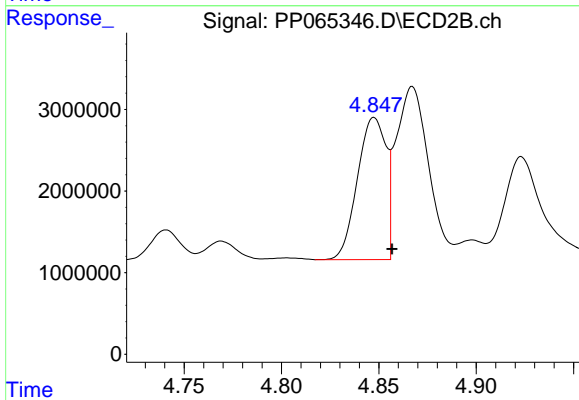
#2 Decachlorobiphenyl  
 R.T.: 8.813 min  
 Delta R.T.: -0.023 min  
 Response: 60715705  
 Conc: 46.06 ng/ml



#3 AR-1016-1

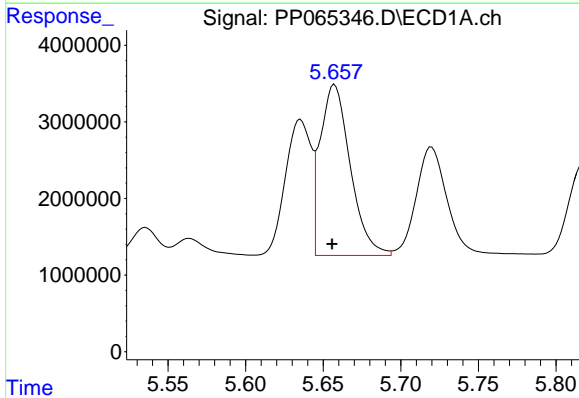
R.T.: 5.636 min  
 Delta R.T.: 0.002 min  
 Response: 20386248  
 Conc: 429.00 ng/ml

Instrument :  
 ECD\_P  
 ClientSampleId :  
 AR1242CCC500



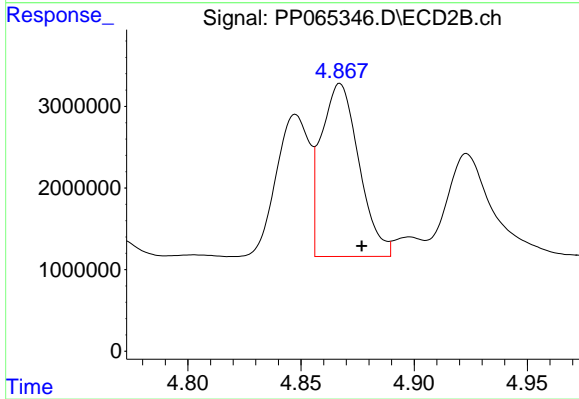
#3 AR-1016-1

R.T.: 4.848 min  
 Delta R.T.: -0.009 min  
 Response: 17745290  
 Conc: 376.41 ng/ml



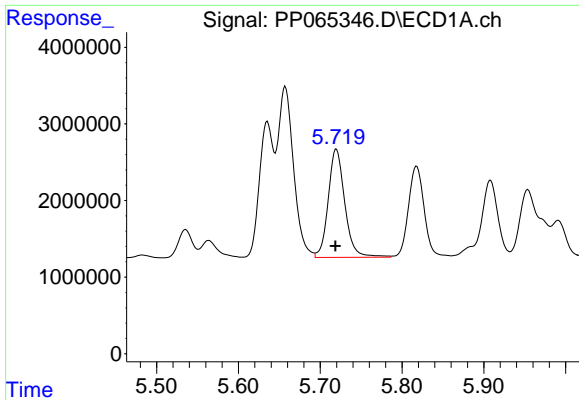
#4 AR-1016-2

R.T.: 5.657 min  
 Delta R.T.: 0.002 min  
 Response: 30162393  
 Conc: 401.58 ng/ml



#4 AR-1016-2

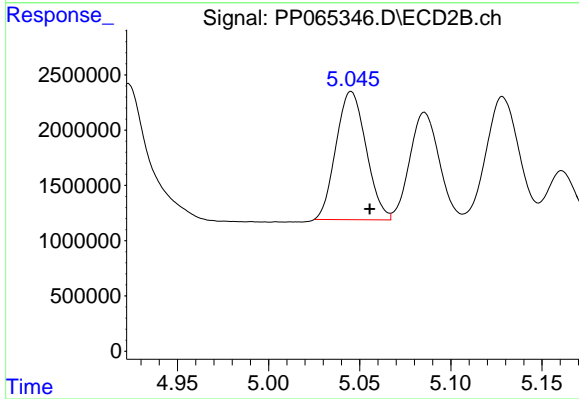
R.T.: 4.867 min  
 Delta R.T.: -0.010 min  
 Response: 24607656  
 Conc: 366.19 ng/ml



#5 AR-1016-3

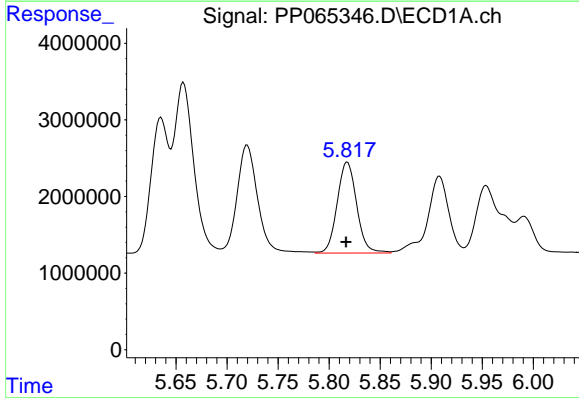
R.T.: 5.720 min  
 Delta R.T.: 0.001 min  
 Response: 19893652  
 Conc: 409.86 ng/ml

Instrument :  
 ECD\_P  
 ClientSampleId :  
 AR1242CCC500



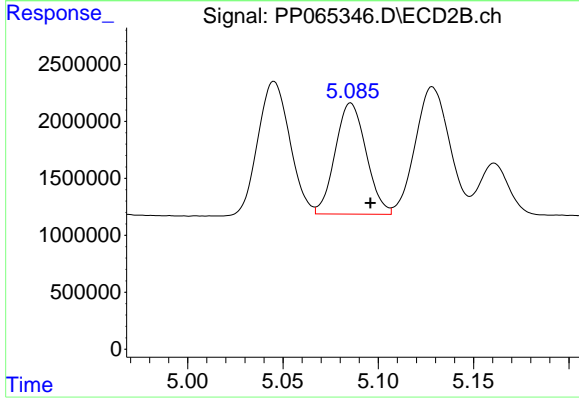
#5 AR-1016-3

R.T.: 5.045 min  
 Delta R.T.: -0.010 min  
 Response: 13343401  
 Conc: 363.88 ng/ml



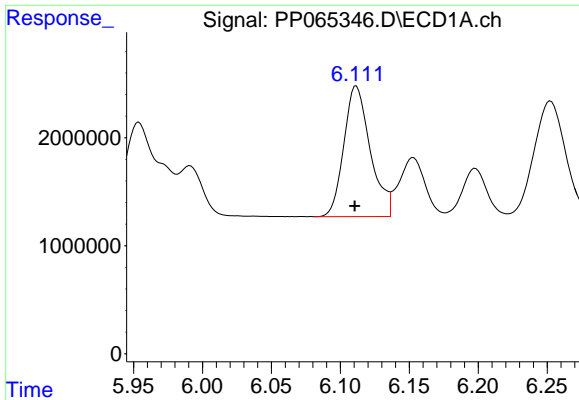
#6 AR-1016-4

R.T.: 5.818 min  
 Delta R.T.: 0.001 min  
 Response: 15815027  
 Conc: 418.07 ng/ml



#6 AR-1016-4

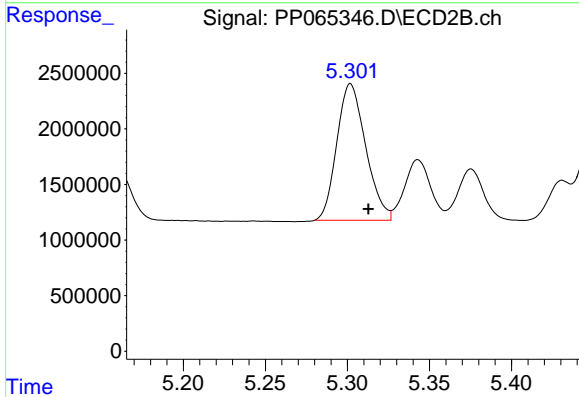
R.T.: 5.086 min  
 Delta R.T.: -0.010 min  
 Response: 11019898  
 Conc: 354.87 ng/ml



#7 AR-1016-5

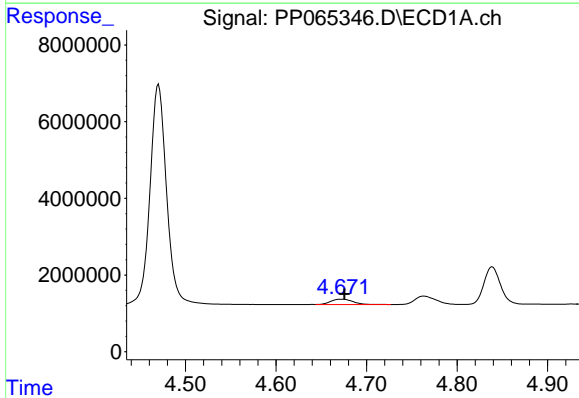
R.T.: 6.112 min  
 Delta R.T.: 0.001 min  
 Response: 16118622  
 Conc: 423.82 ng/ml

Instrument :  
 ECD\_P  
 ClientSampleId :  
 AR1242CCC500



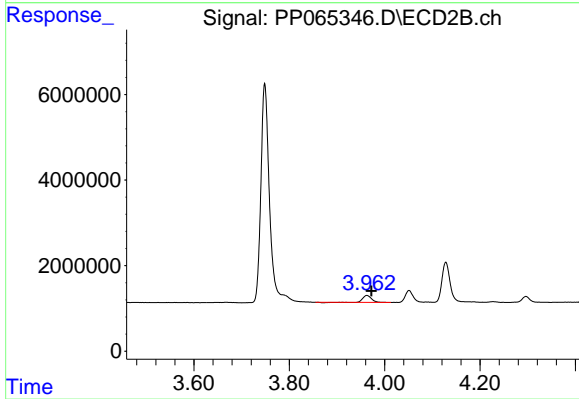
#7 AR-1016-5

R.T.: 5.302 min  
 Delta R.T.: -0.011 min  
 Response: 15063977  
 Conc: 376.57 ng/ml



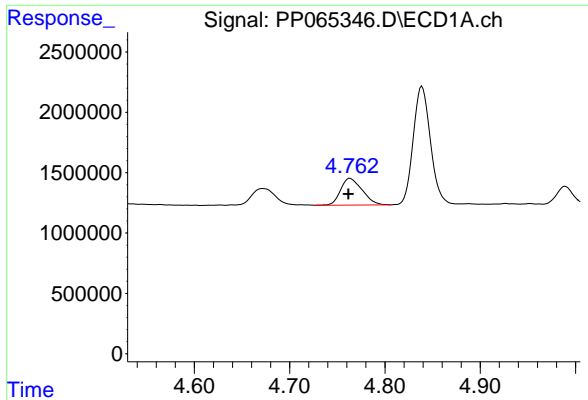
#8 AR-1221-1

R.T.: 4.672 min  
 Delta R.T.: -0.003 min  
 Response: 2392192  
 Conc: 119.30 ng/ml



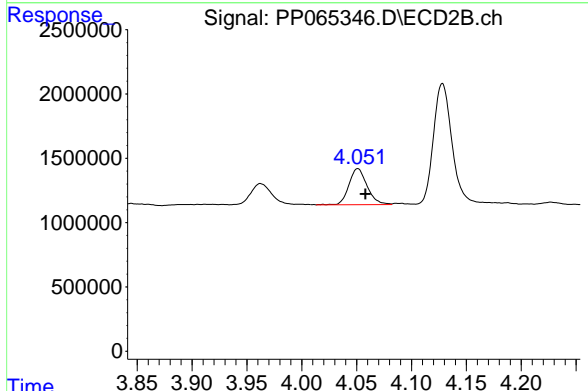
#8 AR-1221-1

R.T.: 3.962 min  
 Delta R.T.: -0.009 min  
 Response: 2013680  
 Conc: 101.55 ng/ml

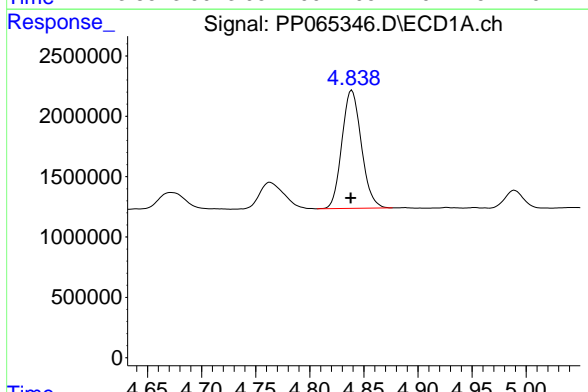


#9 AR-1221-2  
 R.T.: 4.764 min  
 Delta R.T.: 0.002 min  
 Response: 3487493  
 Conc: 231.63 ng/ml

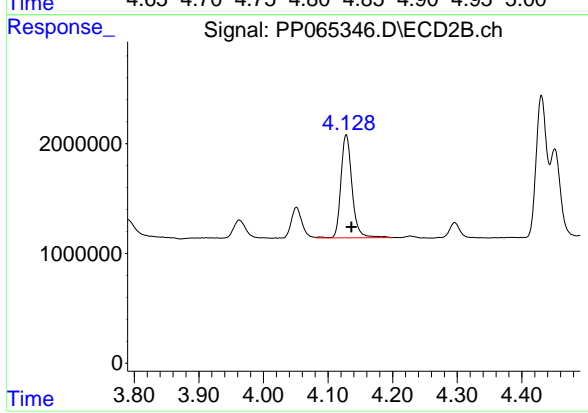
Instrument : ECD\_P  
 ClientSampleId : AR1242CCC500



#9 AR-1221-2  
 R.T.: 4.051 min  
 Delta R.T.: -0.007 min  
 Response: 3231038  
 Conc: 215.01 ng/ml

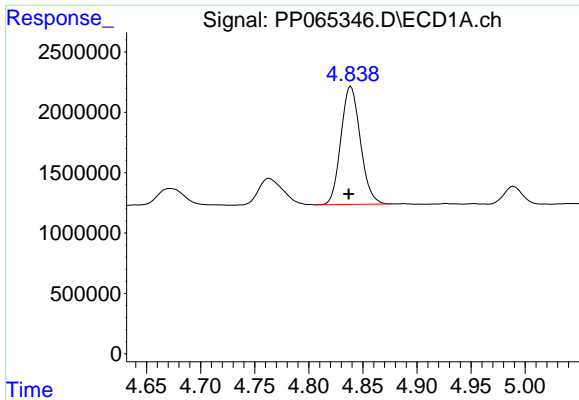


#10 AR-1221-3  
 R.T.: 4.839 min  
 Delta R.T.: 0.001 min  
 Response: 12250446  
 Conc: 268.91 ng/ml



#10 AR-1221-3  
 R.T.: 4.128 min  
 Delta R.T.: -0.008 min  
 Response: 11295066  
 Conc: 255.38 ng/ml

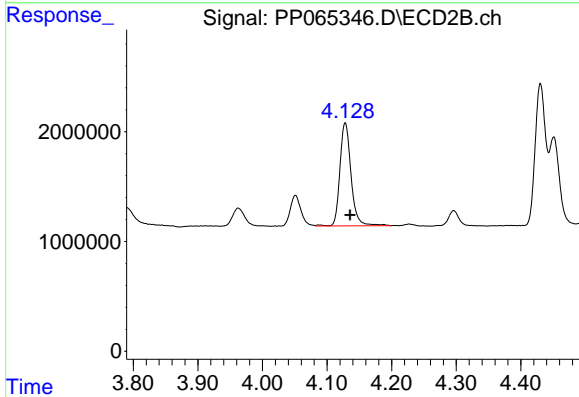




#11 AR-1232-1

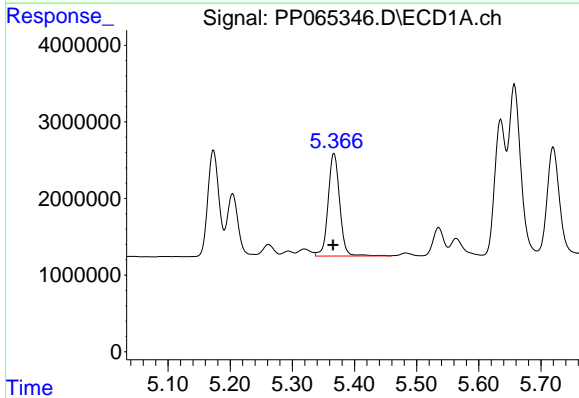
R.T.: 4.839 min  
 Delta R.T.: 0.002 min  
 Response: 12250446  
 Conc: 325.23 ng/ml

Instrument :  
 ECD\_P  
 ClientSampleId :  
 AR1242CCC500



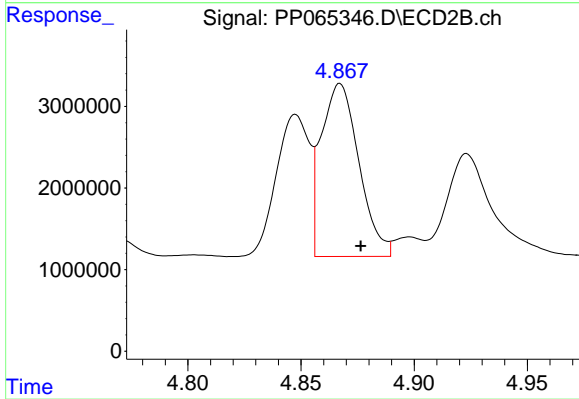
#11 AR-1232-1

R.T.: 4.128 min  
 Delta R.T.: -0.008 min  
 Response: 11295066  
 Conc: 306.04 ng/ml



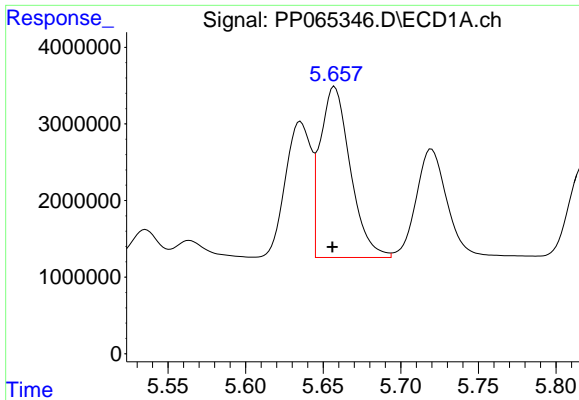
#12 AR-1232-2

R.T.: 5.367 min  
 Delta R.T.: 0.002 min  
 Response: 17295317  
 Conc: 811.93 ng/ml



#12 AR-1232-2

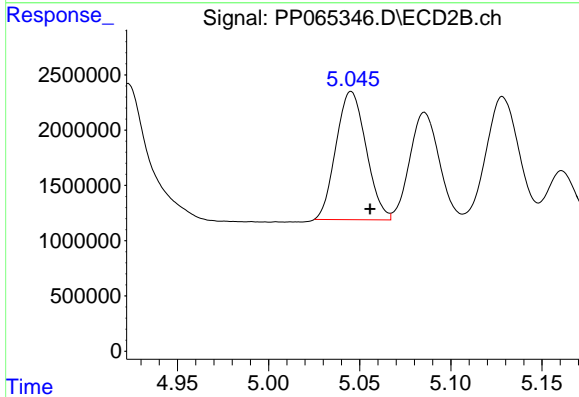
R.T.: 4.867 min  
 Delta R.T.: -0.009 min  
 Response: 24607656  
 Conc: 754.04 ng/ml



#13 AR-1232-3

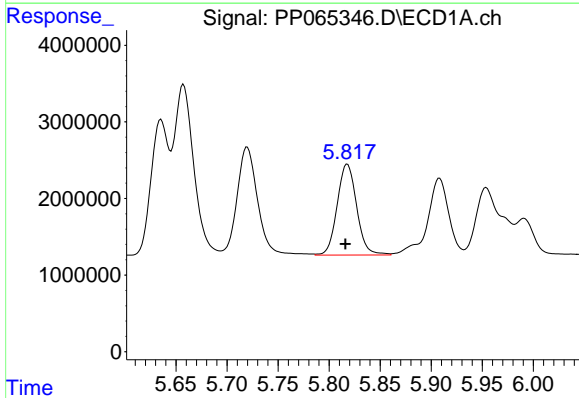
R.T.: 5.657 min  
 Delta R.T.: 0.001 min  
 Response: 30162393  
 Conc: 828.40 ng/ml

Instrument :  
 ECD\_P  
 ClientSampleId :  
 AR1242CCC500



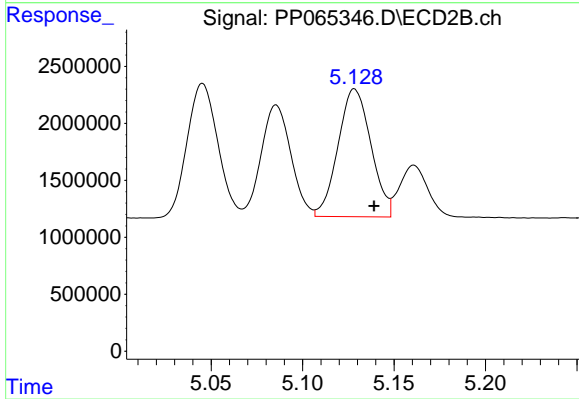
#13 AR-1232-3

R.T.: 5.045 min  
 Delta R.T.: -0.010 min  
 Response: 13343401  
 Conc: 757.08 ng/ml



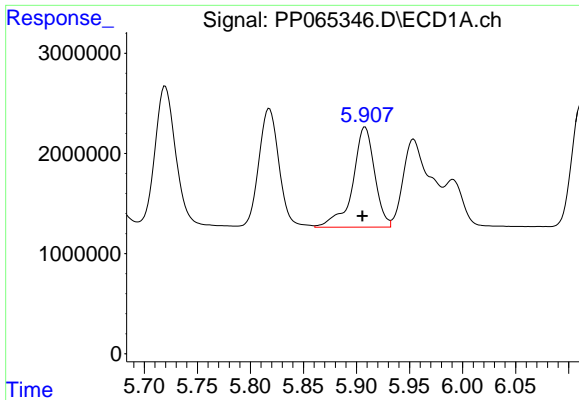
#14 AR-1232-4

R.T.: 5.818 min  
 Delta R.T.: 0.002 min  
 Response: 15815027  
 Conc: 856.20 ng/ml



#14 AR-1232-4

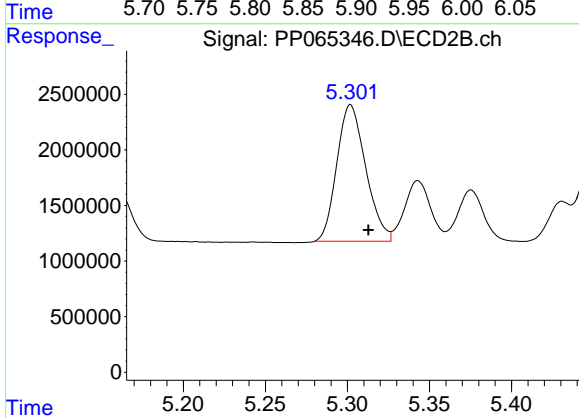
R.T.: 5.128 min  
 Delta R.T.: -0.011 min  
 Response: 14072749  
 Conc: 839.26 ng/ml



#15 AR-1232-5

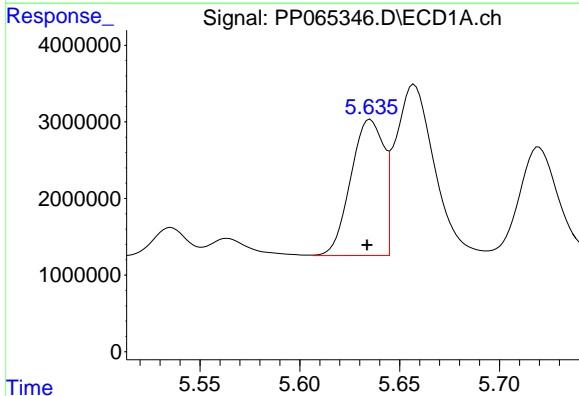
R.T.: 5.908 min  
 Delta R.T.: 0.003 min  
 Response: 14403066  
 Conc: 941.22 ng/ml

Instrument :  
 ECD\_P  
 ClientSampleId :  
 AR1242CCC500



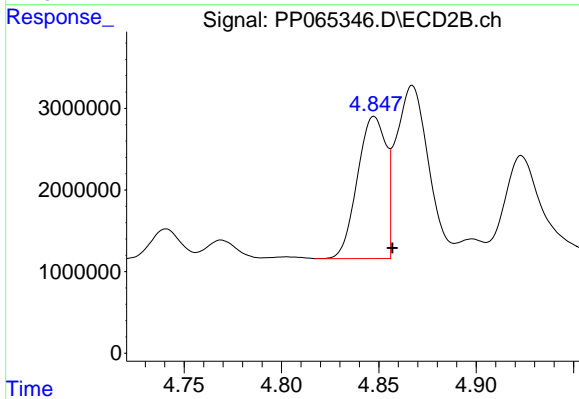
#15 AR-1232-5

R.T.: 5.302 min  
 Delta R.T.: -0.011 min  
 Response: 15063977  
 Conc: 834.17 ng/ml



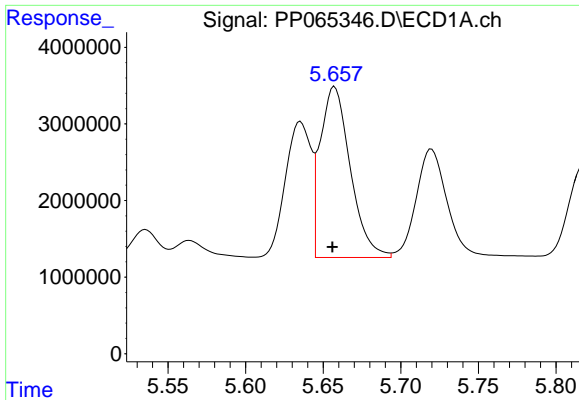
#16 AR-1242-1

R.T.: 5.636 min  
 Delta R.T.: 0.002 min  
 Response: 20386248  
 Conc: 493.98 ng/ml



#16 AR-1242-1

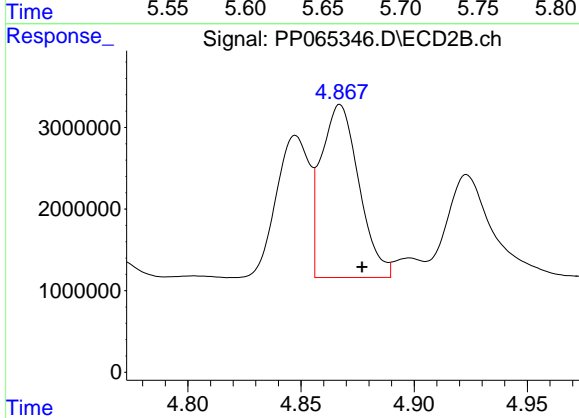
R.T.: 4.848 min  
 Delta R.T.: -0.010 min  
 Response: 17745290  
 Conc: 441.50 ng/ml



#17 AR-1242-2

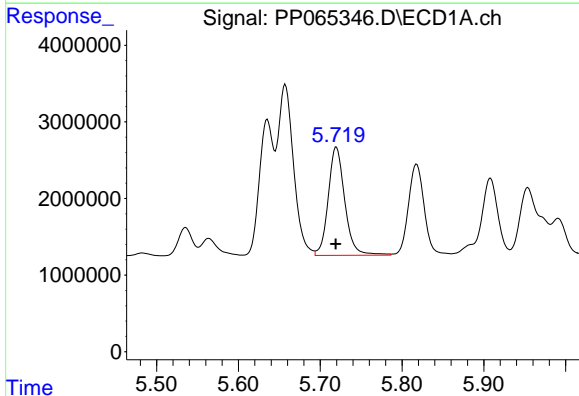
R.T.: 5.657 min  
 Delta R.T.: 0.001 min  
 Response: 30162393  
 Conc: 467.59 ng/ml

Instrument :  
 ECD\_P  
 ClientSampleId :  
 AR1242CCC500



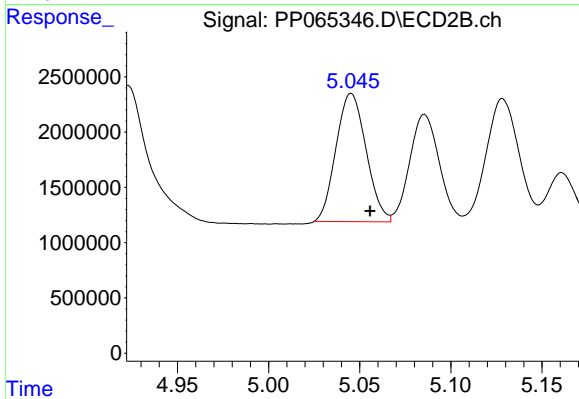
#17 AR-1242-2

R.T.: 4.867 min  
 Delta R.T.: -0.010 min  
 Response: 24607656  
 Conc: 435.58 ng/ml



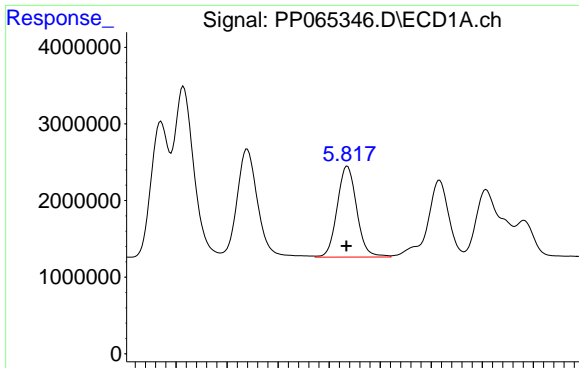
#18 AR-1242-3

R.T.: 5.720 min  
 Delta R.T.: 0.001 min  
 Response: 19893652  
 Conc: 475.25 ng/ml



#18 AR-1242-3

R.T.: 5.045 min  
 Delta R.T.: -0.010 min  
 Response: 13343401  
 Conc: 433.98 ng/ml

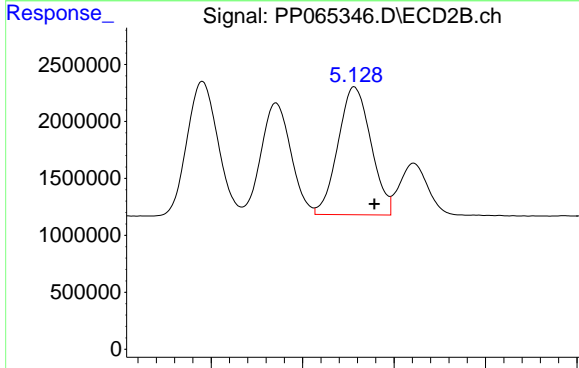


#19 AR-1242-4

R.T.: 5.818 min  
 Delta R.T.: 0.001 min  
 Response: 15815027  
 Conc: 481.75 ng/ml

Instrument :  
 ECD\_P  
 ClientSampleId :  
 AR1242CCC500

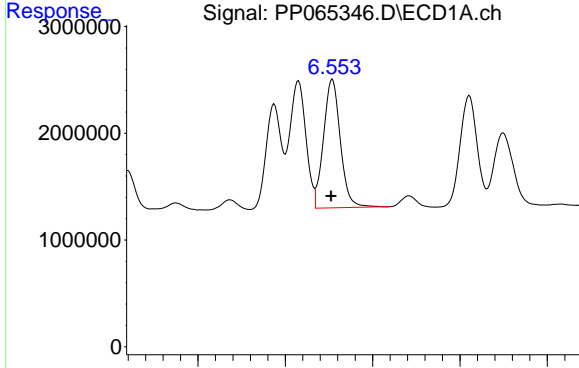
Time 5.65 5.70 5.75 5.80 5.85 5.90 5.95 6.00



#19 AR-1242-4

R.T.: 5.128 min  
 Delta R.T.: -0.011 min  
 Response: 14072749  
 Conc: 433.93 ng/ml

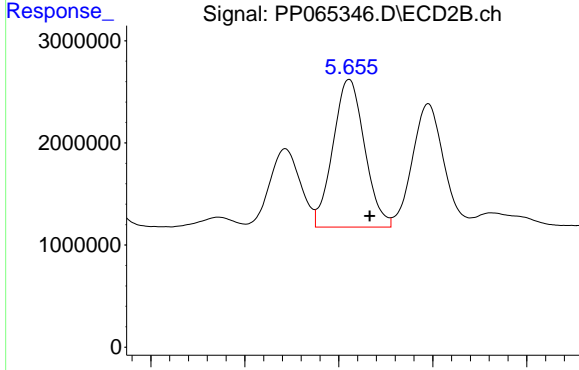
Time 5.05 5.10 5.15 5.20



#20 AR-1242-5

R.T.: 6.554 min  
 Delta R.T.: 0.001 min  
 Response: 16132680  
 Conc: 507.34 ng/ml

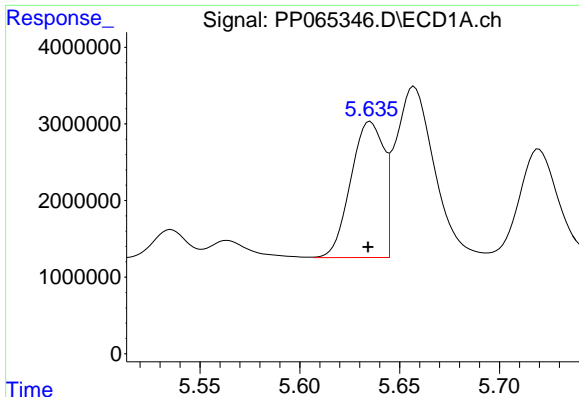
Time 6.40 6.50 6.60 6.70 6.80



#20 AR-1242-5

R.T.: 5.656 min  
 Delta R.T.: -0.011 min  
 Response: 16905023  
 Conc: 465.59 ng/ml

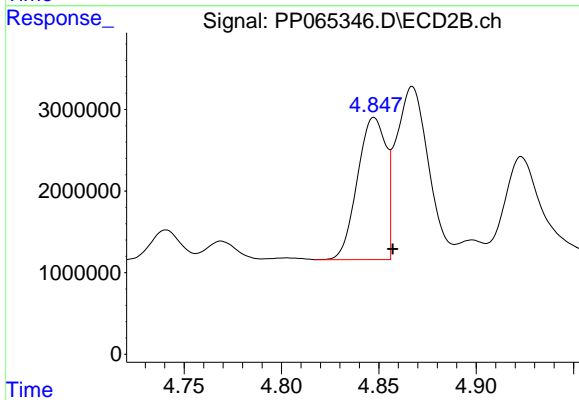
Time 5.55 5.60 5.65 5.70 5.75



#21 AR-1248-1

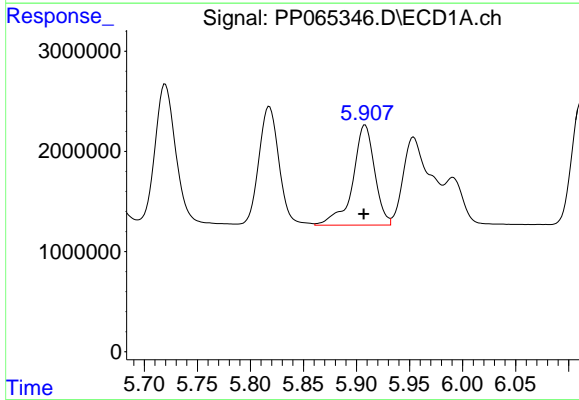
R.T.: 5.636 min  
 Delta R.T.: 0.001 min  
 Response: 20386248  
 Conc: 614.22 ng/ml

Instrument :  
 ECD\_P  
 ClientSampleId :  
 AR1242CCC500



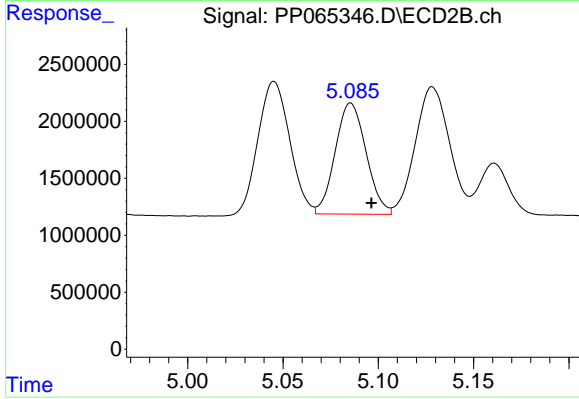
#21 AR-1248-1

R.T.: 4.848 min  
 Delta R.T.: -0.010 min  
 Response: 17745290  
 Conc: 588.76 ng/ml



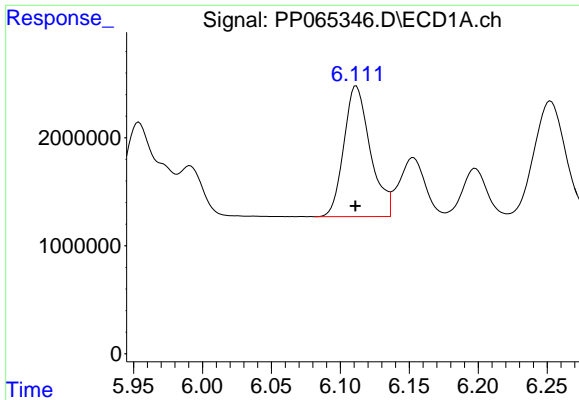
#22 AR-1248-2

R.T.: 5.908 min  
 Delta R.T.: 0.001 min  
 Response: 14403066  
 Conc: 283.01 ng/ml



#22 AR-1248-2

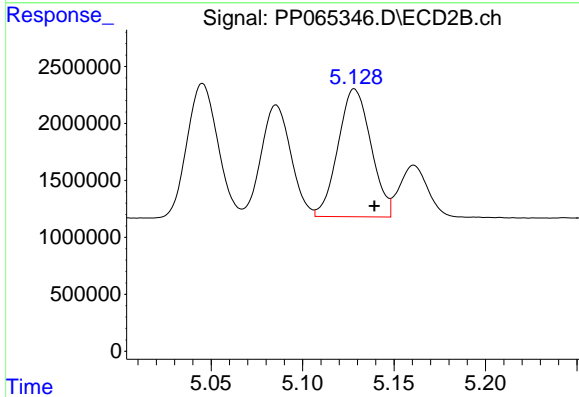
R.T.: 5.086 min  
 Delta R.T.: -0.011 min  
 Response: 11019898  
 Conc: 242.42 ng/ml



#23 AR-1248-3

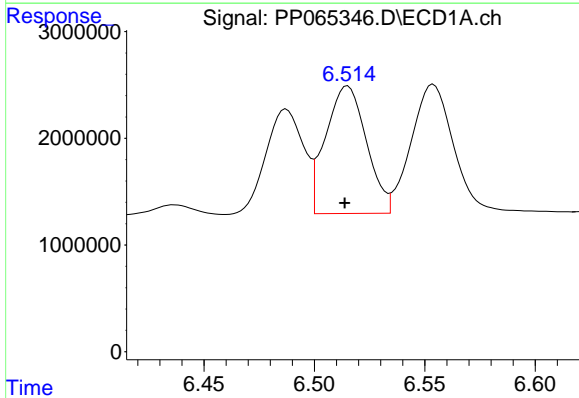
R.T.: 6.112 min  
 Delta R.T.: 0.000 min  
 Response: 16118622  
 Conc: 295.38 ng/ml

Instrument :  
 ECD\_P  
 ClientSampleId :  
 AR1242CCC500



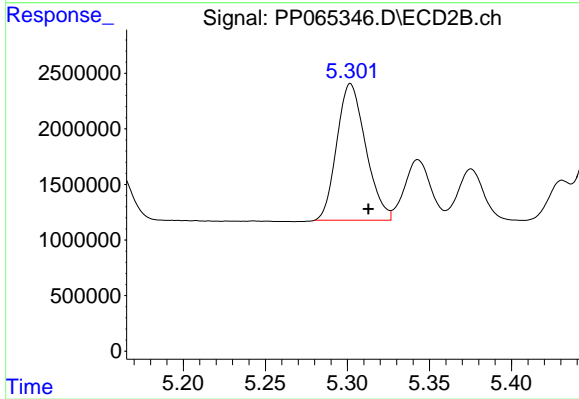
#23 AR-1248-3

R.T.: 5.128 min  
 Delta R.T.: -0.011 min  
 Response: 14072749  
 Conc: 295.90 ng/ml



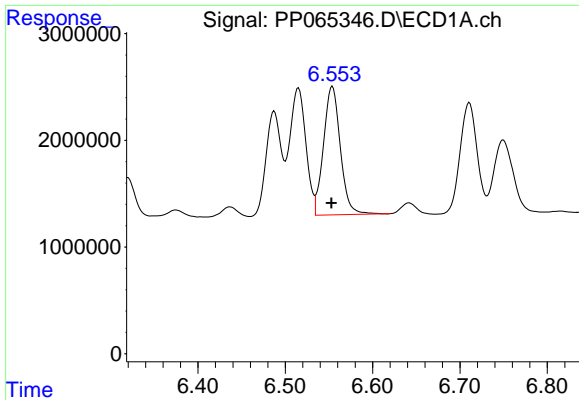
#24 AR-1248-4

R.T.: 6.515 min  
 Delta R.T.: 0.001 min  
 Response: 15369692  
 Conc: 280.68 ng/ml



#24 AR-1248-4

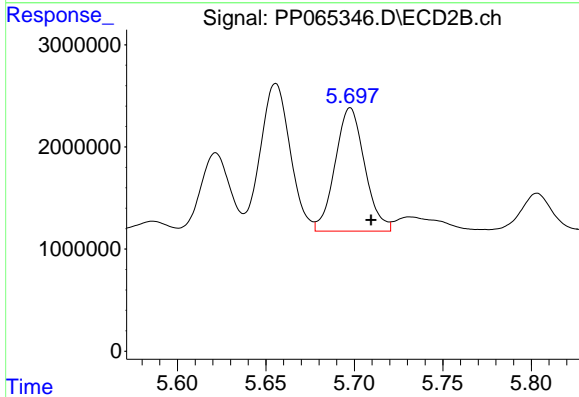
R.T.: 5.302 min  
 Delta R.T.: -0.011 min  
 Response: 15063977  
 Conc: 272.81 ng/ml



#25 AR-1248-5

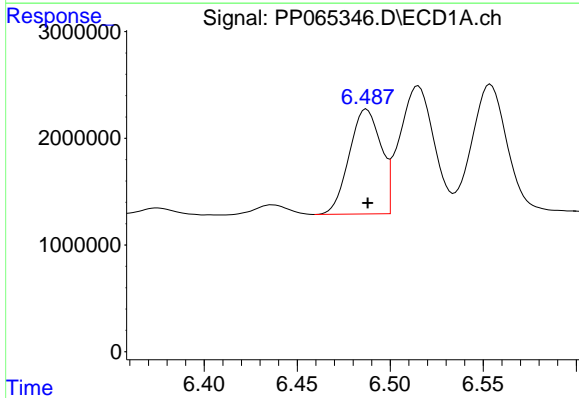
R.T.: 6.554 min  
 Delta R.T.: 0.001 min  
 Response: 16132680  
 Conc: 299.65 ng/ml

Instrument :  
 ECD\_P  
 ClientSampleId :  
 AR1242CCC500



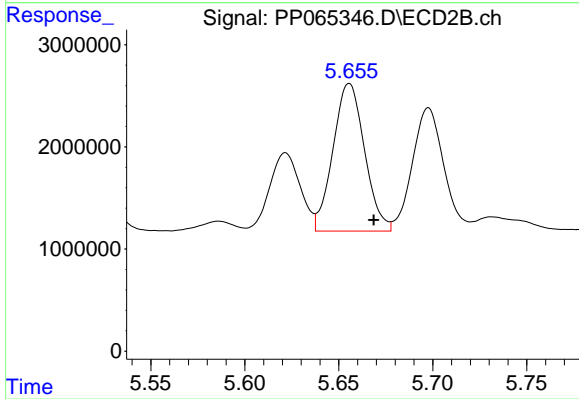
#25 AR-1248-5

R.T.: 5.698 min  
 Delta R.T.: -0.012 min  
 Response: 14041803  
 Conc: 292.42 ng/ml



#26 AR-1254-1

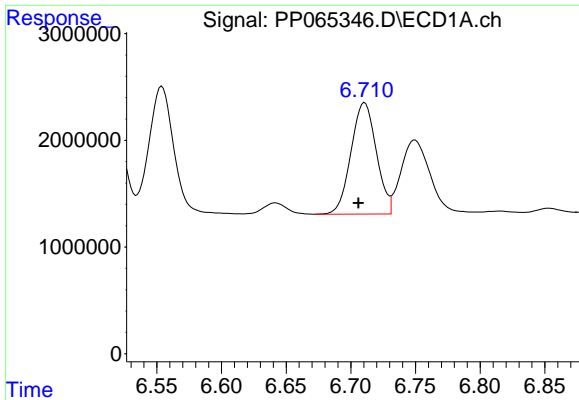
R.T.: 6.487 min  
 Delta R.T.: 0.000 min  
 Response: 11653035  
 Conc: 188.74 ng/ml



#26 AR-1254-1

R.T.: 5.656 min  
 Delta R.T.: -0.013 min  
 Response: 16905023  
 Conc: 211.90 ng/ml

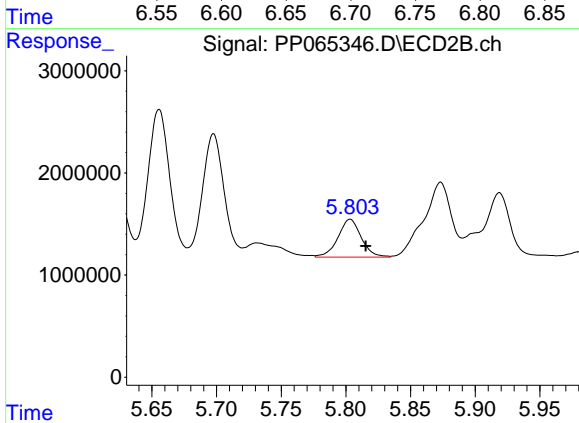




#27 AR-1254-2

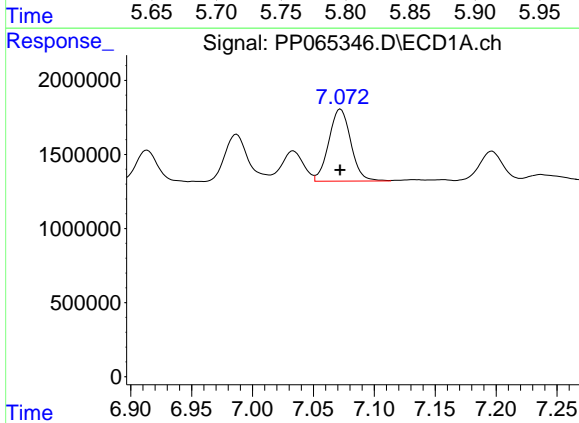
R.T.: 6.711 min  
 Delta R.T.: 0.005 min  
 Response: 14254484  
 Conc: 155.38 ng/ml

Instrument :  
 ECD\_P  
 ClientSampleId :  
 AR1242CCC500



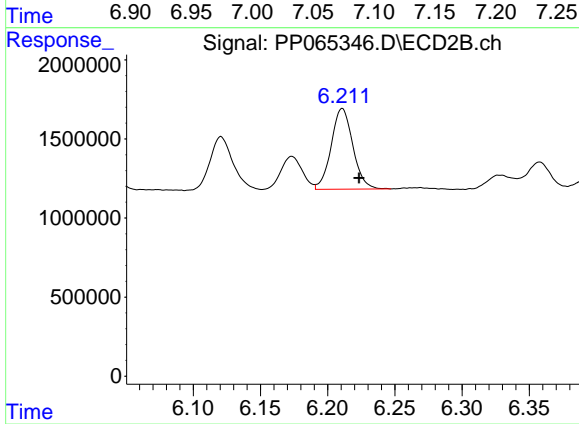
#27 AR-1254-2

R.T.: 5.803 min  
 Delta R.T.: -0.012 min  
 Response: 4638100  
 Conc: 65.77 ng/ml



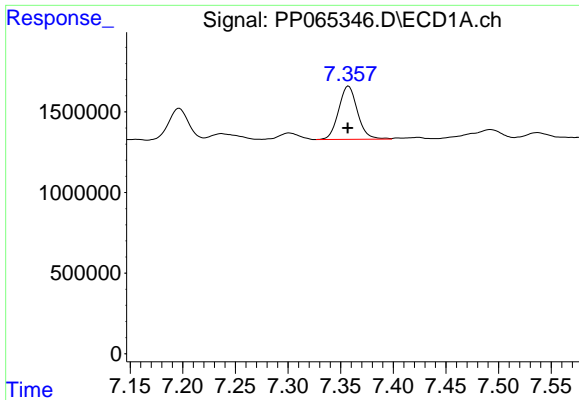
#28 AR-1254-3

R.T.: 7.072 min  
 Delta R.T.: 0.000 min  
 Response: 6110987  
 Conc: 65.69 ng/ml



#28 AR-1254-3

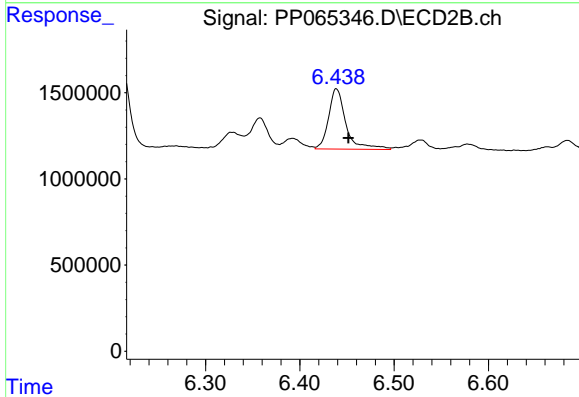
R.T.: 6.211 min  
 Delta R.T.: -0.013 min  
 Response: 5704410  
 Conc: 51.76 ng/ml



#29 AR-1254-4

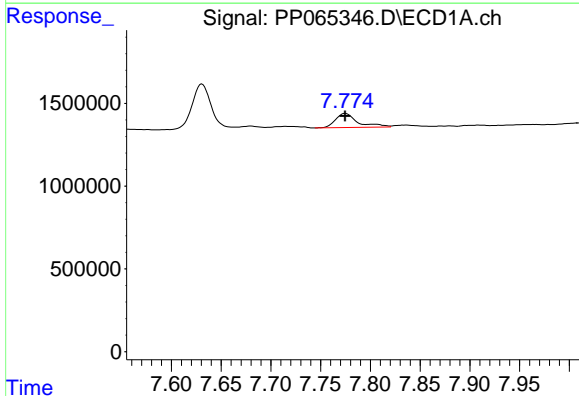
R.T.: 7.357 min  
 Delta R.T.: 0.000 min  
 Response: 4107946  
 Conc: 67.76 ng/ml

Instrument :  
 ECD\_P  
 ClientSampleId :  
 AR1242CCC500



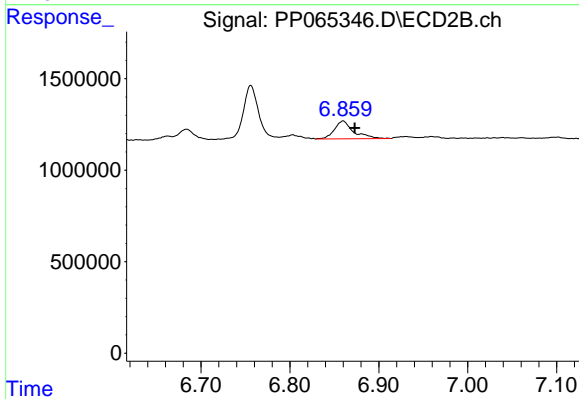
#29 AR-1254-4

R.T.: 6.439 min  
 Delta R.T.: -0.013 min  
 Response: 4486702  
 Conc: 79.48 ng/ml



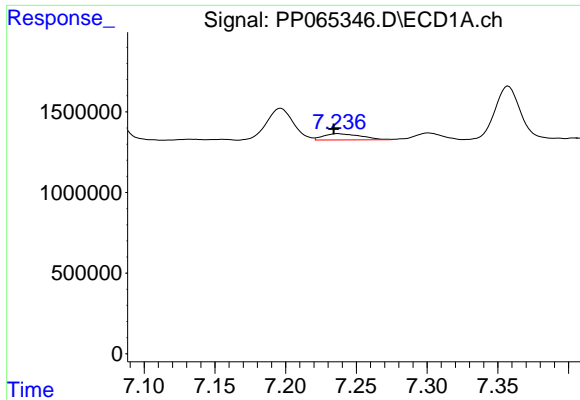
#30 AR-1254-5

R.T.: 7.775 min  
 Delta R.T.: 0.000 min  
 Response: 1319703  
 Conc: 18.79 ng/ml



#30 AR-1254-5

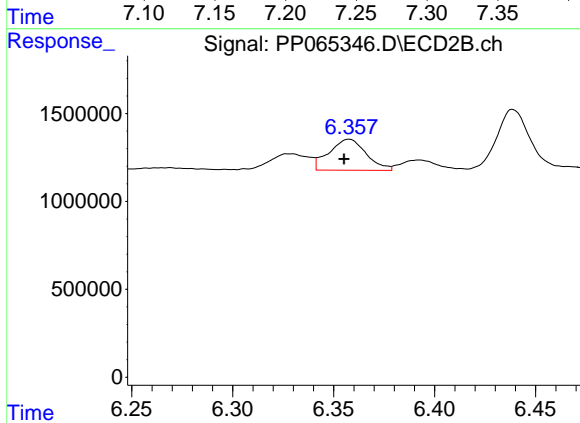
R.T.: 6.860 min  
 Delta R.T.: -0.013 min  
 Response: 1454317  
 Conc: 15.61 ng/ml



#31 AR-1260-1

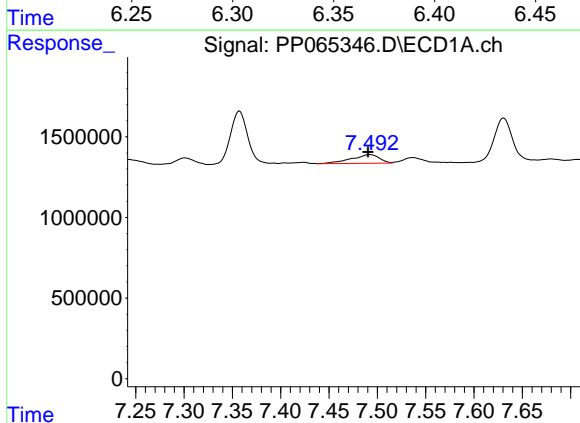
R.T.: 7.237 min  
 Delta R.T.: 0.003 min  
 Response: 715287  
 Conc: 10.36 ng/ml

Instrument :  
 ECD\_P  
 ClientSampleId :  
 AR1242CCC500



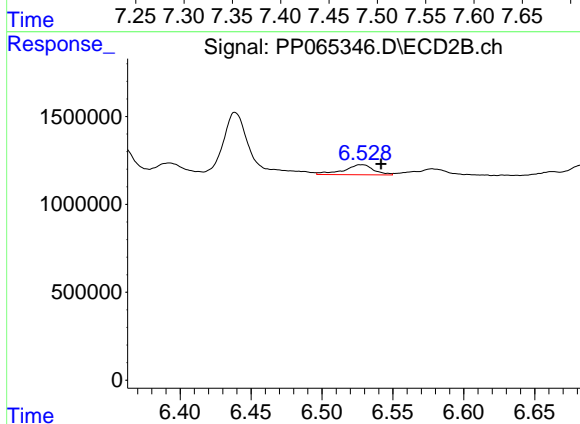
#31 AR-1260-1

R.T.: 6.358 min  
 Delta R.T.: 0.003 min  
 Response: 2263190  
 Conc: 30.13 ng/ml



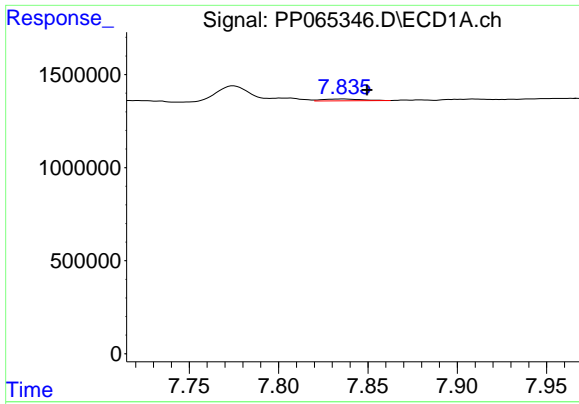
#32 AR-1260-2

R.T.: 7.492 min  
 Delta R.T.: 0.002 min  
 Response: 1086529  
 Conc: 14.07 ng/ml



#32 AR-1260-2

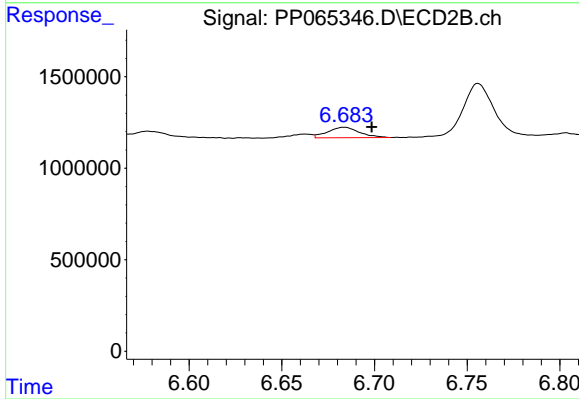
R.T.: 6.528 min  
 Delta R.T.: -0.014 min  
 Response: 829531  
 Conc: 9.58 ng/ml



#33 AR-1260-3

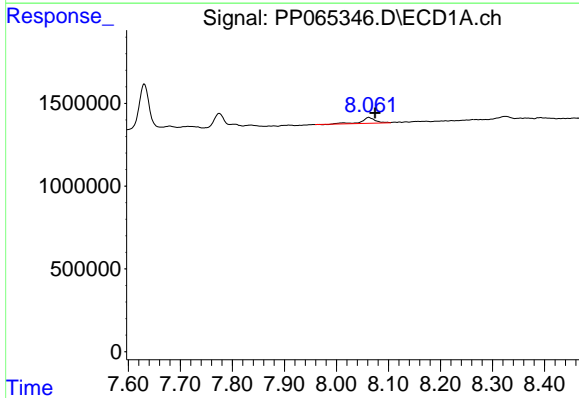
R.T.: 7.835 min  
 Delta R.T.: -0.014 min  
 Response: 147787  
 Conc: 2.47 ng/ml

Instrument :  
 ECD\_P  
 ClientSampleId :  
 AR1242CCC500



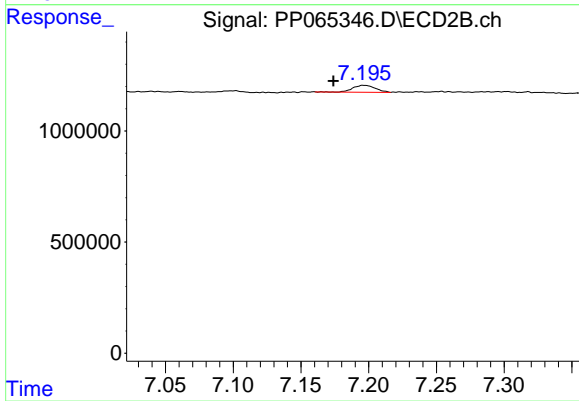
#33 AR-1260-3

R.T.: 6.684 min  
 Delta R.T.: -0.015 min  
 Response: 678988  
 Conc: 7.97 ng/ml



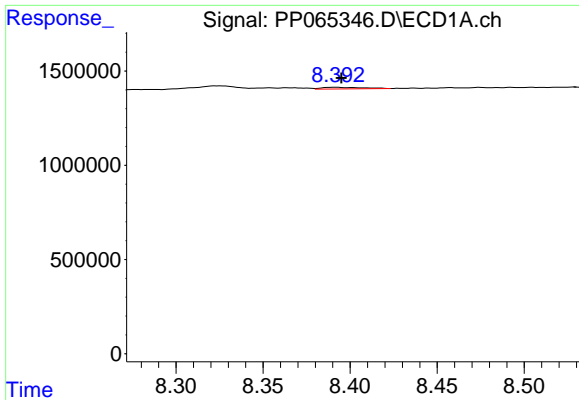
#34 AR-1260-4

R.T.: 8.062 min  
 Delta R.T.: -0.012 min  
 Response: 641566  
 Conc: 9.53 ng/ml



#34 AR-1260-4

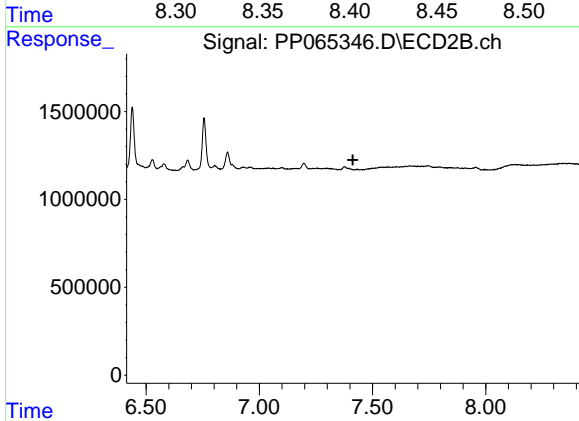
R.T.: 7.197 min  
 Delta R.T.: 0.023 min  
 Response: 358495  
 Conc: 5.35 ng/ml



#35 AR-1260-5

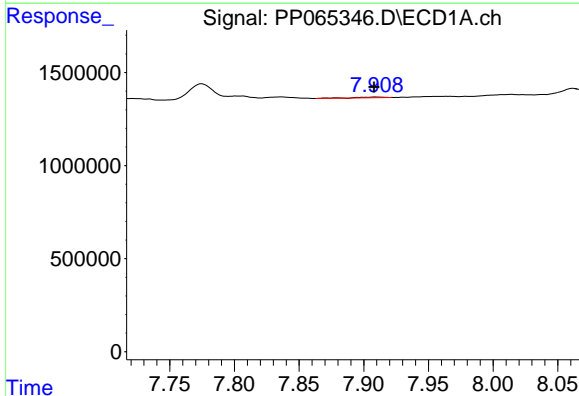
R.T.: 8.392 min  
 Delta R.T.: -0.003 min  
 Response: 142911  
 Conc: 1.21 ng/ml

Instrument :  
 ECD\_P  
 ClientSampleId :  
 AR1242CCC500



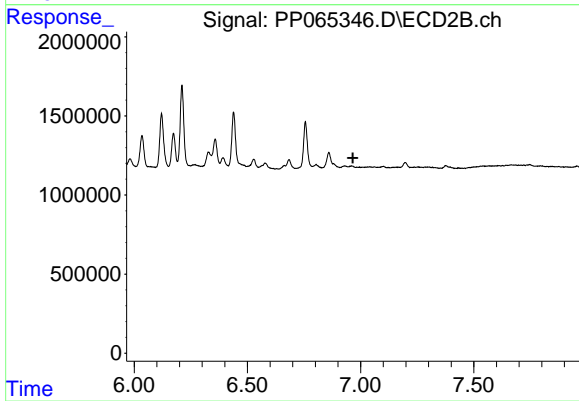
#35 AR-1260-5

R.T.: 0.000 min  
 Exp R.T. : 7.413 min  
 Response: 0  
 Conc: N.D.



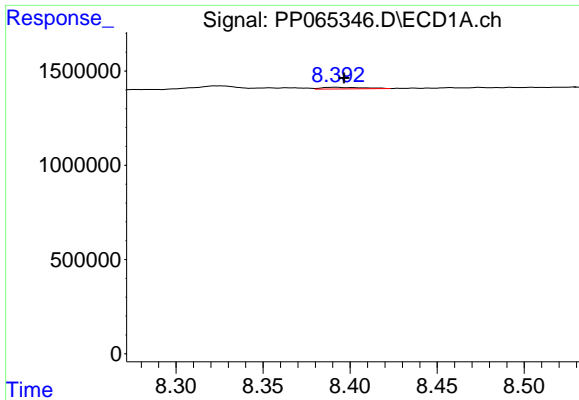
#36 AR-1262-1

R.T.: 7.910 min  
 Delta R.T.: 0.002 min  
 Response: 50071  
 Conc: 1.30 ng/ml



#36 AR-1262-1

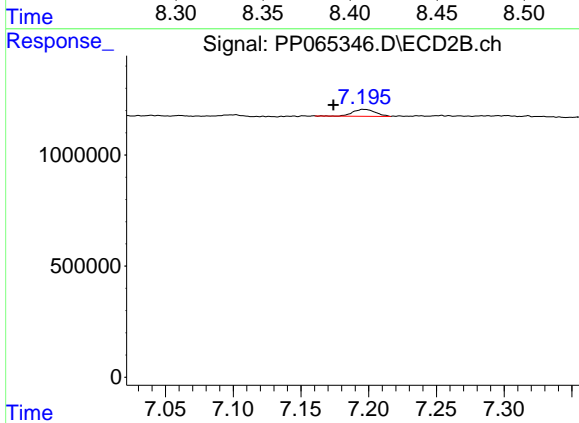
R.T.: 0.000 min  
 Exp R.T. : 6.966 min  
 Response: 0  
 Conc: N.D.



#37 AR-1262-2

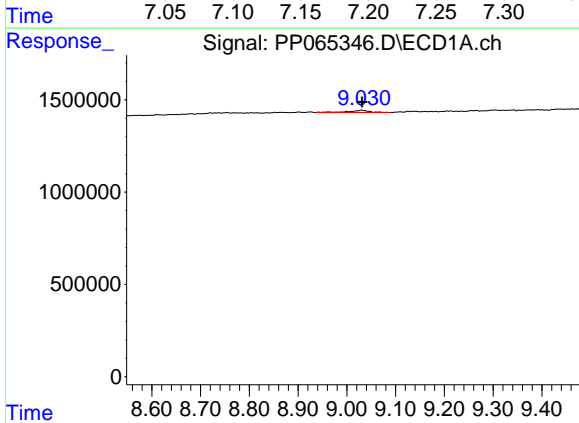
R.T.: 8.392 min  
 Delta R.T.: -0.005 min  
 Response: 142911  
 Conc: 0.99 ng/ml

Instrument :  
 ECD\_P  
 ClientSampleId :  
 AR1242CCC500



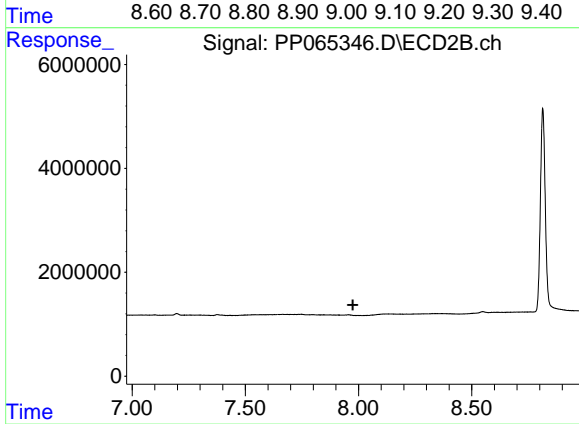
#37 AR-1262-2

R.T.: 7.197 min  
 Delta R.T.: 0.023 min  
 Response: 358495  
 Conc: 4.06 ng/ml



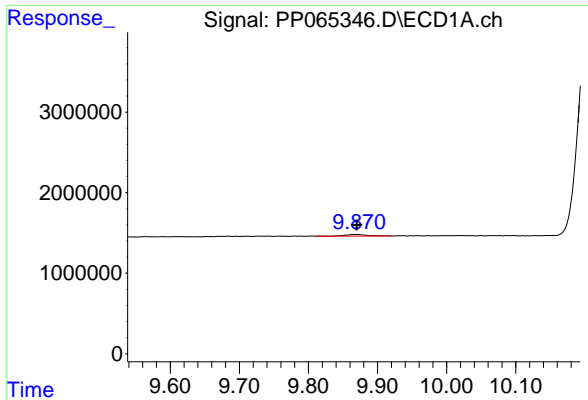
#43 AR-1268-3

R.T.: 9.031 min  
 Delta R.T.: 0.000 min  
 Response: 364389  
 Conc: 2.41 ng/ml



#43 AR-1268-3

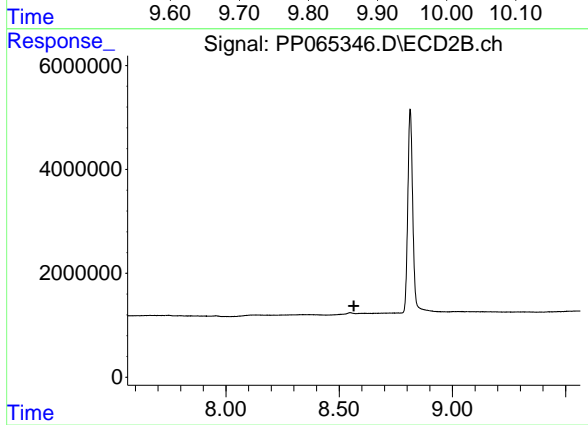
R.T.: 0.000 min  
 Exp R.T.: 7.975 min  
 Response: 0  
 Conc: N.D.



#45 AR-1268-5

R.T.: 9.869 min  
 Delta R.T.: 0.000 min  
 Response: 428692  
 Conc: 0.95 ng/ml

Instrument :  
 ECD\_P  
 ClientSampleId :  
 AR1242CCC500



#45 AR-1268-5

R.T.: 0.000 min  
 Exp R.T. : 8.565 min  
 Response: 0  
 Conc: N.D.