

Data Path : Z:\pestpcbsrv\HPCHEM1\ECD_P\Data\PP053122\
 Data File : PP048251.D
 Signal(s) : Signal #1: ECD1A.ch Signal #2: ECD2B.ch
 Acq On : 31 May 2022 19:55
 Operator : YP\AJ
 Sample : N2954-07
 Misc :
 ALS Vial : 40 Sample Multiplier: 1

Instrument :
 ECD_P
 ClientSampleId :

Integration File signal 1: autoint1.e
 Integration File signal 2: autoint2.e
 Quant Time: Jun 01 07:26:48 2022
 Quant Method : Z:\pestpcbsrv\HPCHEM1\ECD_P\methods\PP052722.M
 Quant Title : GC EXTRACTABLES
 QLast Update : Fri May 27 23:53:39 2022
 Response via : Initial Calibration
 Integrator: ChemStation

Volume Inj. : 2 µl
 Signal #1 Phase : ZB-MR1 Signal #2 Phase: ZB-MR2
 Signal #1 Info : 30Mx0.32mmx 0.50µ Signal #2 Info : 30M x 0.32mm x 0.25µm

Compound	RT#1	RT#2	Resp#1	Resp#2	ng/ml	ng/ml

System Monitoring Compounds						
1) SA Tetrachlo...	4.035	3.216	58870095	48264684	25.139	24.490
2) SA Decachlor...	10.387	8.649	41383822	33822663	21.292	20.924
Target Compounds						
4) L1 AR-1016-2	5.358	4.431f	940630	182555	7.950	1.960 #
5) L1 AR-1016-3	5.427	0.000	221459	0	3.277	N.D. #
6) L1 AR-1016-4	5.510f	4.632	903852	1431829	14.663	37.580 #
7) L1 AR-1016-5	0.000	4.843f	0	277449	N.D.	5.811 #
8) L2 AR-1221-1	4.271	0.000	995520	0	37.657	N.D. #
9) L2 AR-1221-2	4.370	3.533	1092111	1134599	53.323	73.869 #
10) L2 AR-1221-3	4.478f	0.000	488302	0	7.799	N.D. #
11) L3 AR-1232-1	4.478f	0.000	488302	0	9.401	N.D. #
12) L3 AR-1232-2	5.032	4.431f	2418275	182555	100.728	4.531 #
13) L3 AR-1232-3	5.358	0.000	940630	0	18.956	N.D. #
14) L3 AR-1232-4	5.510f	4.675	903852	1287923	37.810	74.213 #
15) L3 AR-1232-5	5.623	4.843f	2207179	277449	135.100	14.164 #
17) L4 AR-1242-2	5.358	4.431f	940630	182555	11.437	2.747 #
18) L4 AR-1242-3	5.427	0.000	221459	0	4.511	N.D. #
19) L4 AR-1242-4	5.510f	4.675	903852	1287923	22.840	40.099 #
20) L4 AR-1242-5	6.340	5.240	3178094	1209637	74.622	28.965 #
22) L5 AR-1248-2	5.623	4.632	2207179	1431829	38.595	30.066
23) L5 AR-1248-3	0.000	4.675	0	1287923	N.D.	25.997 #
24) L5 AR-1248-4	0.000	4.843f	0	277449	N.D.	4.762 #
25) L5 AR-1248-5	6.340	5.319f	3178094	386095	41.780	6.401 #
26) L6 AR-1254-1	6.265	5.240	3193498	1209637	43.990	13.799 #
27) L6 AR-1254-2	6.503	5.402	7080692	4222789	59.508	56.202
28) L6 AR-1254-3	6.915	5.855	1460501	4756040	12.294	38.763 #
29) L6 AR-1254-4	7.228	6.084	2017674	534775	22.369	7.122 #
30) L6 AR-1254-5	7.695	6.540	16608864	12764350	179.236	126.084 #
31) L7 AR-1260-1	7.093	5.979	14033775	12519266	150.357	146.247
32) L7 AR-1260-2	7.380	6.186	20241228	19176026	181.072	186.035
33) L7 AR-1260-3	7.778	6.353	15179884	6023472	177.218	60.829 #
34) L7 AR-1260-4	8.030	6.868f	15553406	6305230	149.902	75.738 #
35) L7 AR-1260-5	8.392	7.133f	15771416	15882849	76.428	80.050
36) L8 AR-1262-1	7.778	6.585	15179884	13874276	133.099	128.415
37) L8 AR-1262-2	8.392	6.868	15771416	6305230	73.992	63.712
38) L8 AR-1262-3	8.758f	7.445	10269564	4942352	110.196	65.675 #
39) L8 AR-1262-4	8.816f	7.513f	6316276	10405480	106.230	71.443 #
40) L8 AR-1262-5	9.568	8.056	4146636	4486191	52.391	66.469 #
41) L9 AR-1268-1	8.758f	7.445	10269564	4942352	38.821	21.162 #
42) L9 AR-1268-2	8.816f	7.513f	6316276	10405480	26.155	48.092 #
43) L9 AR-1268-3	9.079	7.744	534637	356305	2.601	1.917 #
44) L9 AR-1268-4	9.568	8.056	4146636	4486191	46.161	54.610

Data Path : Z:\pestpcbsrv\HPCHEM1\ECD_P\Data\PP053122\
 Data File : PP048251.D
 Signal(s) : Signal #1: ECD1A.ch Signal #2: ECD2B.ch
 Acq On : 31 May 2022 19:55
 Operator : YP\AJ
 Sample : N2954-07
 Misc :
 ALS Vial : 40 Sample Multiplier: 1

Instrument :
 ECD_P
 ClientSampleId :

Integration File signal 1: autoint1.e
 Integration File signal 2: autoint2.e
 Quant Time: Jun 01 07:26:48 2022
 Quant Method : Z:\pestpcbsrv\HPCHEM1\ECD_P\methods\PP052722.M
 Quant Title : GC EXTRACTABLES
 QLast Update : Fri May 27 23:53:39 2022
 Response via : Initial Calibration
 Integrator: ChemStation

Volume Inj. : 2 µl
 Signal #1 Phase : ZB-MR1 Signal #2 Phase: ZB-MR2
 Signal #1 Info : 30Mx0.32mmx 0.50µ Signal #2 Info : 30M x 0.32mm x 0.25µm

	Compound	RT#1	RT#2	Resp#1	Resp#2	ng/ml	ng/ml
45)	L9 AR-1268-5	10.020	8.373f	1448030	1146044	2.051	1.891

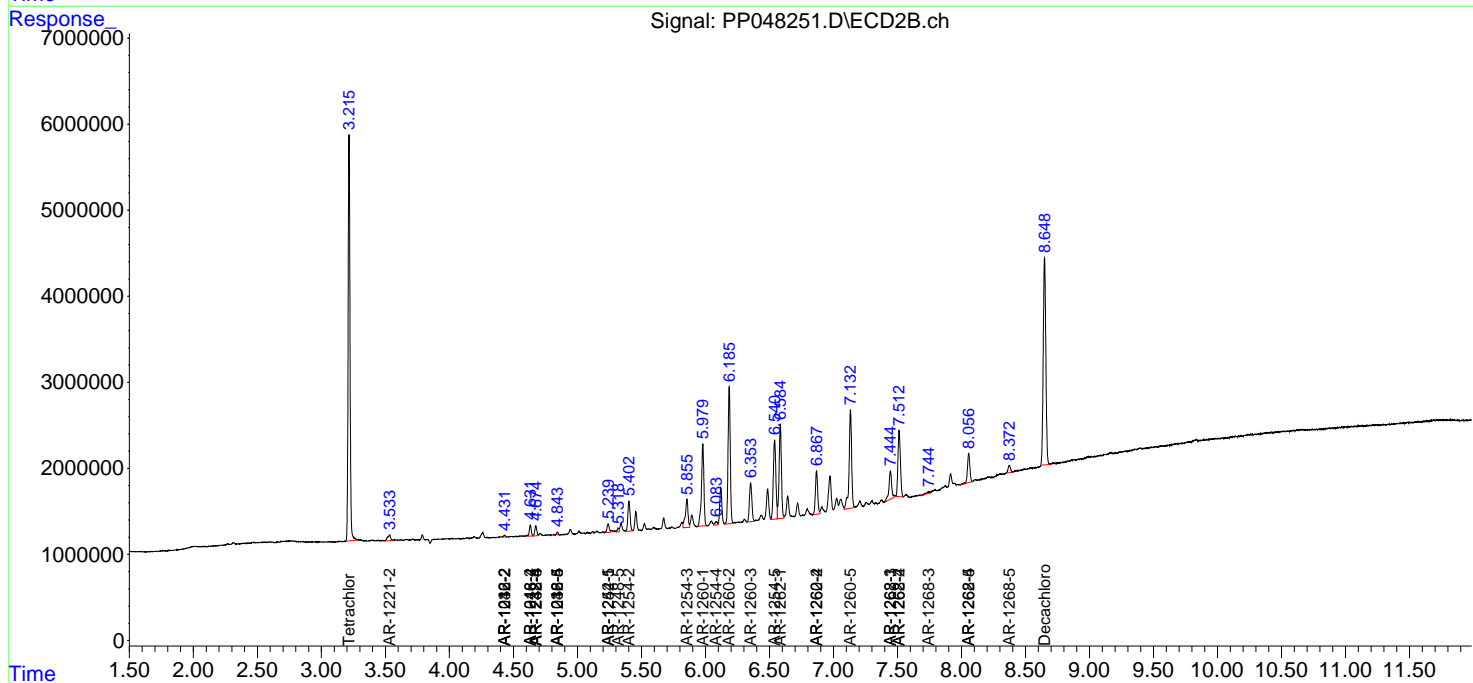
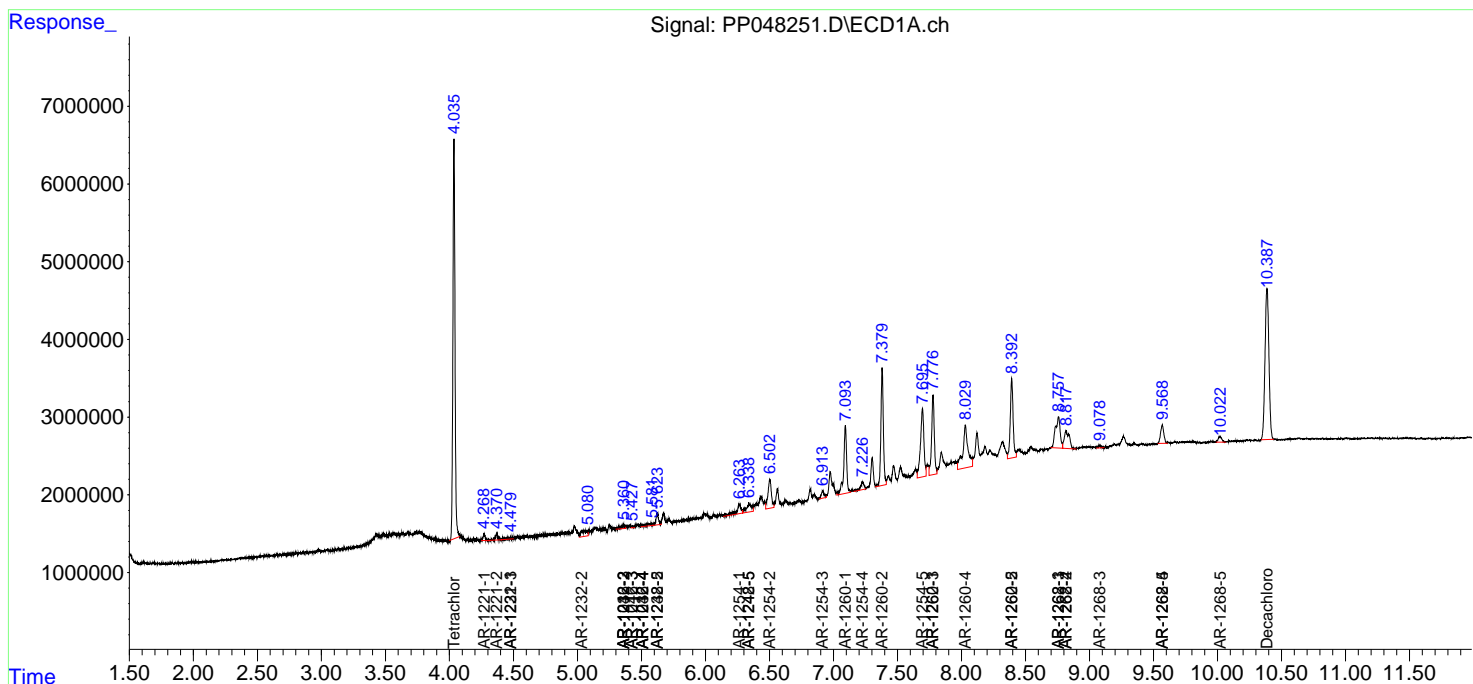
(f)=RT Delta > 1/2 Window (#)=Amounts differ by > 25% (m)=manual int.

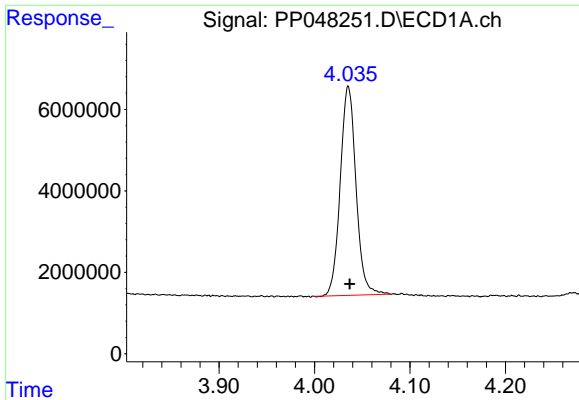
Data Path : Z:\pestpcbsrv\HPCHEM1\ECD_P\Data\PP053122\
 Data File : PP048251.D
 Signal(s) : Signal #1: ECD1A.ch Signal #2: ECD2B.ch
 Acq On : 31 May 2022 19:55
 Operator : YP\AJ
 Sample : N2954-07
 Misc :
 ALS Vial : 40 Sample Multiplier: 1

Instrument :
 ECD_P
 ClientSampleId :

Integration File signal 1: autoint1.e
 Integration File signal 2: autoint2.e
 Quant Time: Jun 01 07:26:48 2022
 Quant Method : Z:\pestpcbsrv\HPCHEM1\ECD_P\methods\PP052722.M
 Quant Title : GC EXTRACTABLES
 QLast Update : Fri May 27 23:53:39 2022
 Response via : Initial Calibration
 Integrator: ChemStation

Volume Inj. : 2 µl
 Signal #1 Phase : ZB-MR1 Signal #2 Phase: ZB-MR2
 Signal #1 Info : 30Mx0.32mmx 0.50µ Signal #2 Info : 30M x 0.32mm x 0.25µm

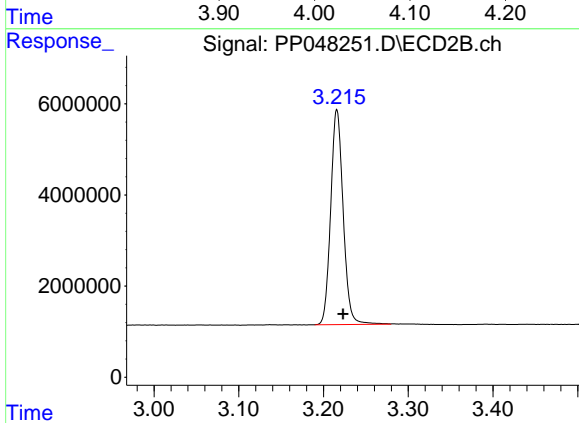




#1 Tetrachloro-m-xylene

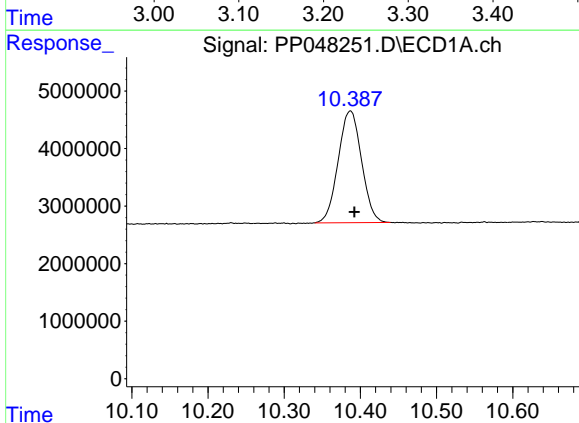
R.T.: 4.035 min
 Delta R.T.: -0.002 min
 Response: 58870095
 Conc: 25.14 ng/ml

Instrument :
 ECD_P
 ClientSampleId :



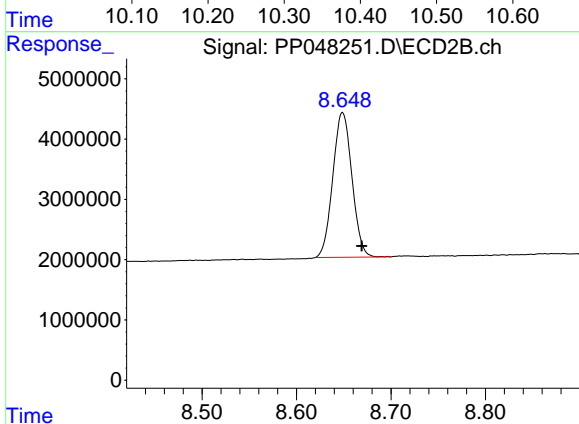
#1 Tetrachloro-m-xylene

R.T.: 3.216 min
 Delta R.T.: -0.007 min
 Response: 48264684
 Conc: 24.49 ng/ml



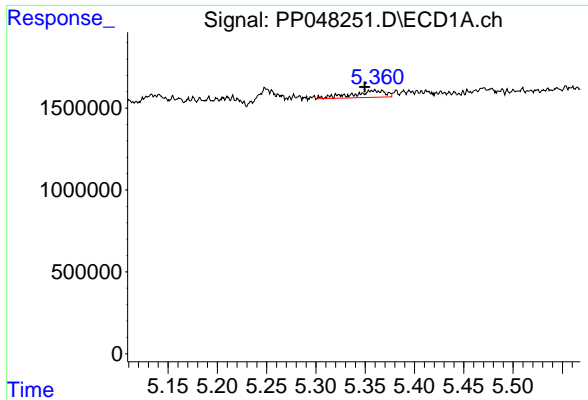
#2 Decachlorobiphenyl

R.T.: 10.387 min
 Delta R.T.: -0.006 min
 Response: 41383822
 Conc: 21.29 ng/ml



#2 Decachlorobiphenyl

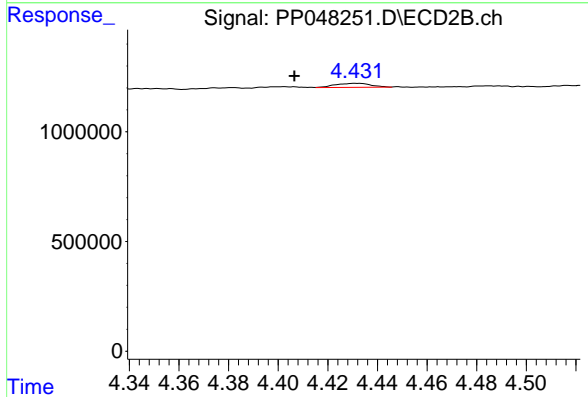
R.T.: 8.649 min
 Delta R.T.: -0.020 min
 Response: 33822663
 Conc: 20.92 ng/ml



#4 AR-1016-2

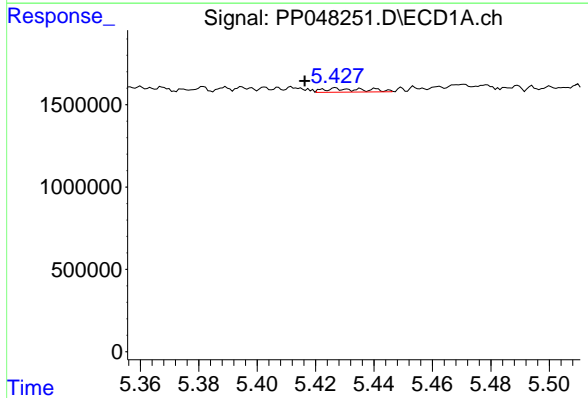
R.T.: 5.358 min
 Delta R.T.: 0.009 min
 Response: 940630
 Conc: 7.95 ng/ml

Instrument :
 ECD_P
 ClientSampleId :



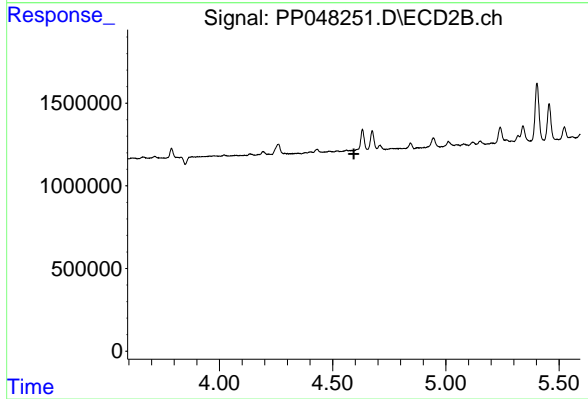
#4 AR-1016-2

R.T.: 4.431 min
 Delta R.T.: 0.025 min
 Response: 182555
 Conc: 1.96 ng/ml



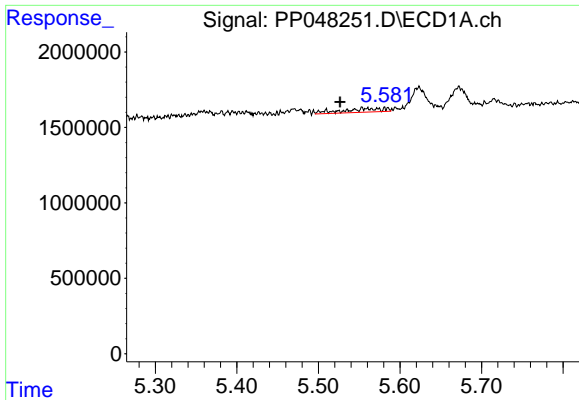
#5 AR-1016-3

R.T.: 5.427 min
 Delta R.T.: 0.011 min
 Response: 221459
 Conc: 3.28 ng/ml



#5 AR-1016-3

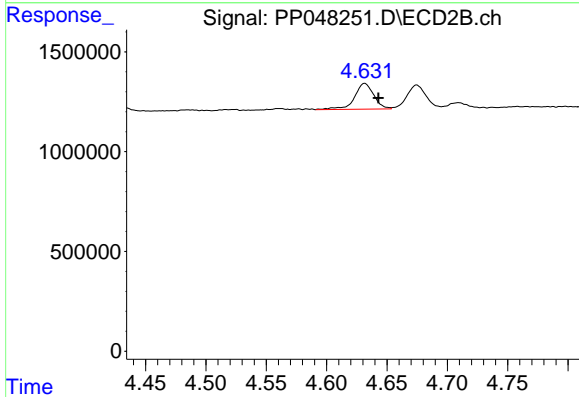
R.T.: 0.000 min
 Exp R.T. : 4.594 min
 Response: 0
 Conc: N.D.



#6 AR-1016-4

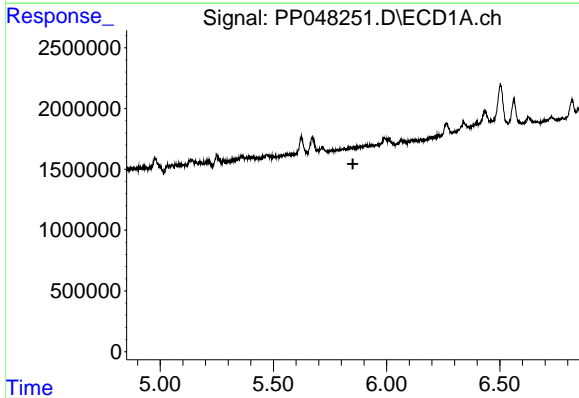
R.T.: 5.510 min
 Delta R.T.: -0.017 min
 Response: 903852
 Conc: 14.66 ng/ml

Instrument :
 ECD_P
 ClientSampleId :



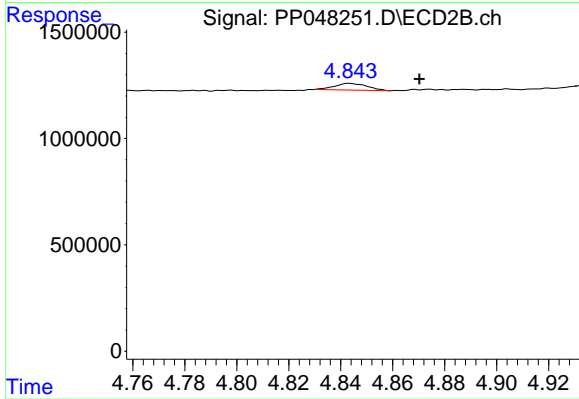
#6 AR-1016-4

R.T.: 4.632 min
 Delta R.T.: -0.011 min
 Response: 1431829
 Conc: 37.58 ng/ml



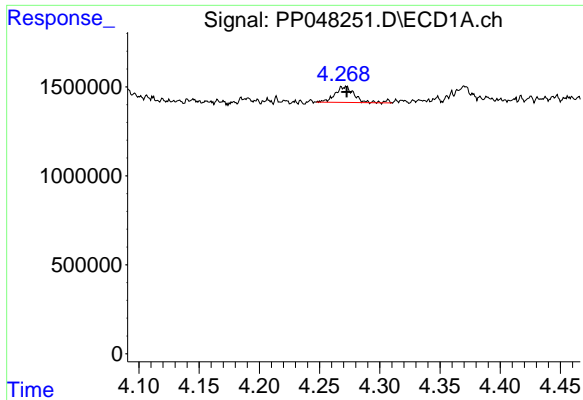
#7 AR-1016-5

R.T.: 0.000 min
 Exp R.T. : 5.851 min
 Response: 0
 Conc: N.D.



#7 AR-1016-5

R.T.: 4.843 min
 Delta R.T.: -0.027 min
 Response: 277449
 Conc: 5.81 ng/ml

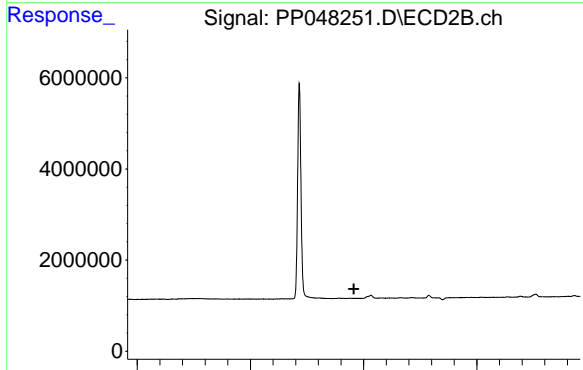


#8 AR-1221-1

R.T.: 4.271 min
 Delta R.T.: -0.001 min
 Response: 995520
 Conc: 37.66 ng/ml

Instrument :
 ECD_P
 ClientSampleId :

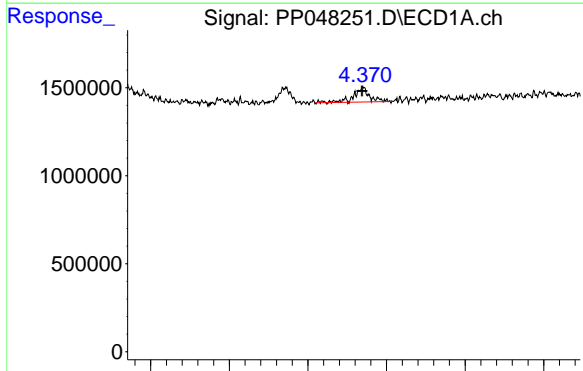
Time 4.10 4.15 4.20 4.25 4.30 4.35 4.40 4.45



#8 AR-1221-1

R.T.: 0.000 min
 Exp R.T. : 3.457 min
 Response: 0
 Conc: N.D.

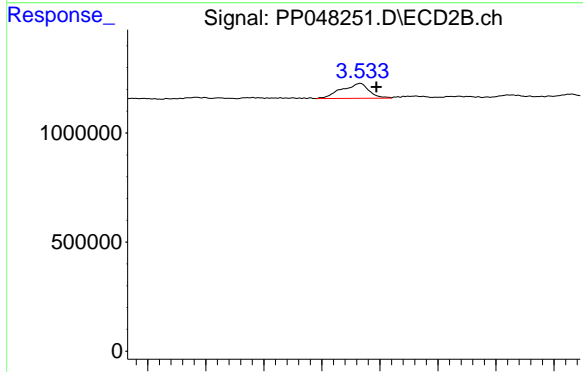
Time 2.50 3.00 3.50 4.00



#9 AR-1221-2

R.T.: 4.370 min
 Delta R.T.: 0.000 min
 Response: 1092111
 Conc: 53.32 ng/ml

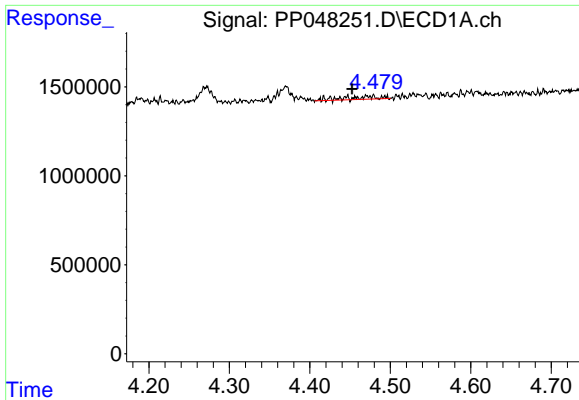
Time 4.10 4.20 4.30 4.40 4.50 4.60



#9 AR-1221-2

R.T.: 3.533 min
 Delta R.T.: -0.014 min
 Response: 1134599
 Conc: 73.87 ng/ml

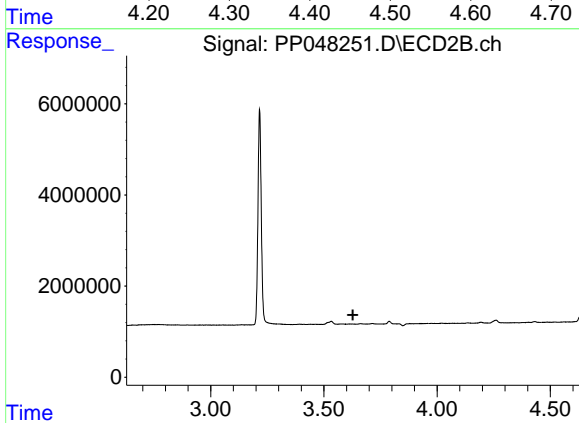
Time 3.35 3.40 3.45 3.50 3.55 3.60 3.65 3.70



#10 AR-1221-3

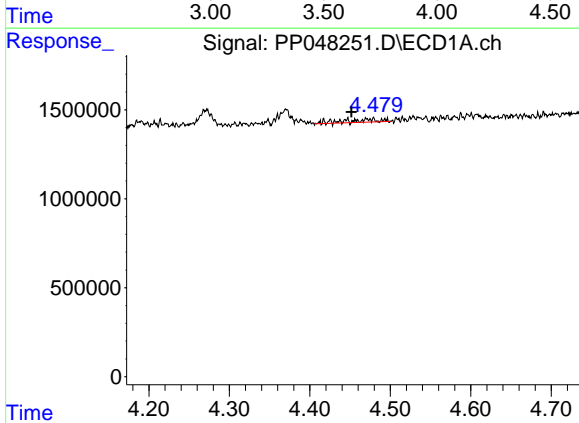
R.T.: 4.478 min
 Delta R.T.: 0.026 min
 Response: 488302
 Conc: 7.80 ng/ml

Instrument :
 ECD_P
 ClientSampleId :



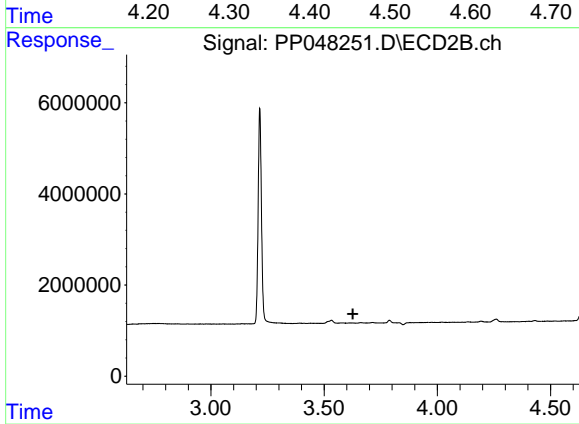
#10 AR-1221-3

R.T.: 0.000 min
 Exp R.T. : 3.628 min
 Response: 0
 Conc: N.D.



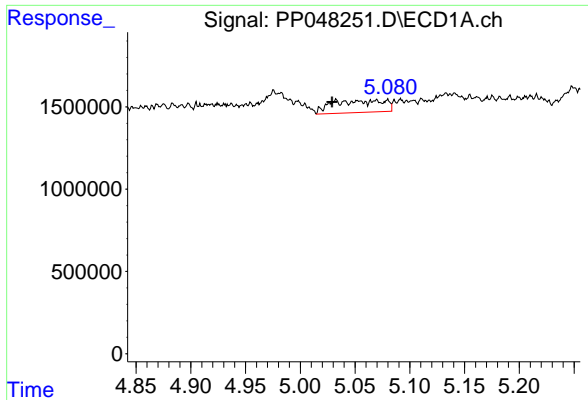
#11 AR-1232-1

R.T.: 4.478 min
 Delta R.T.: 0.026 min
 Response: 488302
 Conc: 9.40 ng/ml



#11 AR-1232-1

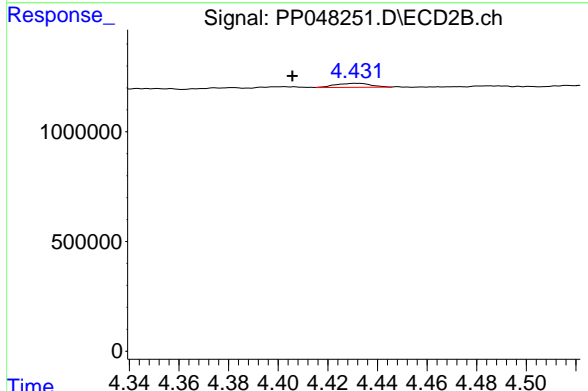
R.T.: 0.000 min
 Exp R.T. : 3.627 min
 Response: 0
 Conc: N.D.



#12 AR-1232-2

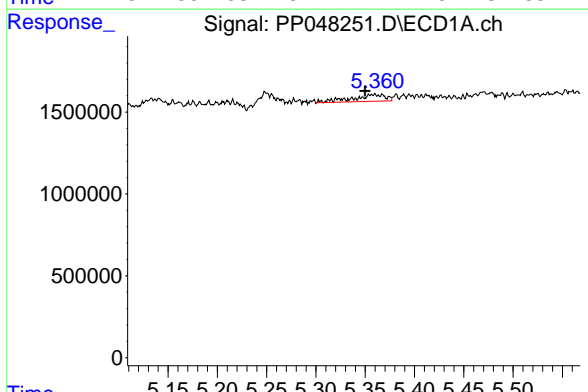
R.T.: 5.032 min
 Delta R.T.: 0.004 min
 Response: 2418275
 Conc: 100.73 ng/ml

Instrument :
 ECD_P
 ClientSampleId :



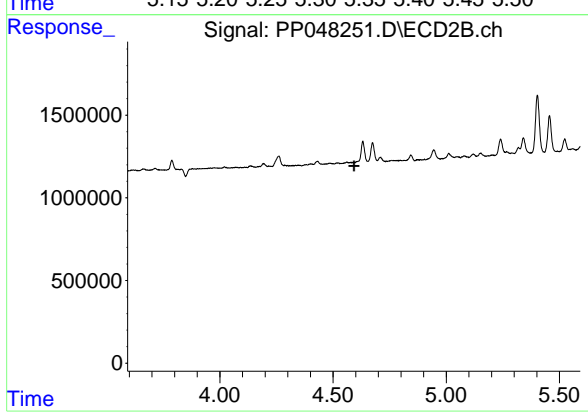
#12 AR-1232-2

R.T.: 4.431 min
 Delta R.T.: 0.026 min
 Response: 182555
 Conc: 4.53 ng/ml



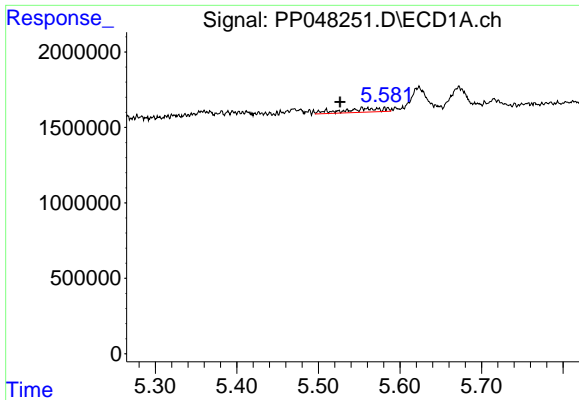
#13 AR-1232-3

R.T.: 5.358 min
 Delta R.T.: 0.008 min
 Response: 940630
 Conc: 18.96 ng/ml



#13 AR-1232-3

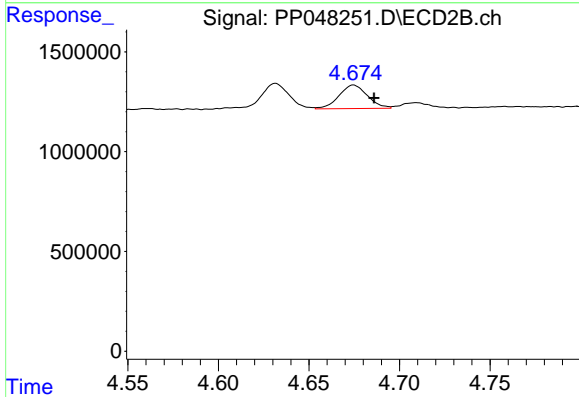
R.T.: 0.000 min
 Exp R.T.: 4.593 min
 Response: 0
 Conc: N.D.



#14 AR-1232-4

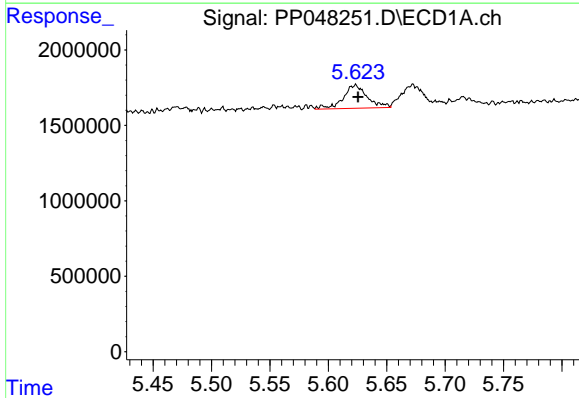
R.T.: 5.510 min
 Delta R.T.: -0.017 min
 Response: 903852
 Conc: 37.81 ng/ml

Instrument :
 ECD_P
 ClientSampleId :



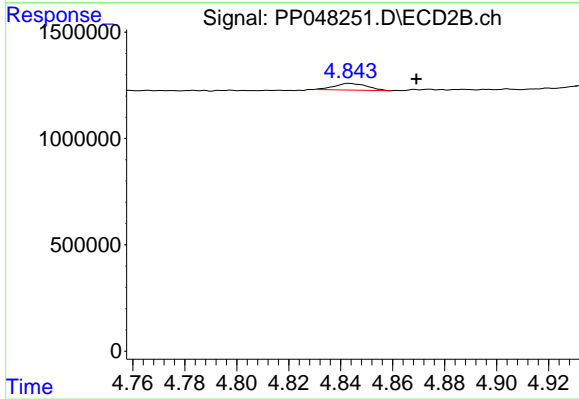
#14 AR-1232-4

R.T.: 4.675 min
 Delta R.T.: -0.011 min
 Response: 1287923
 Conc: 74.21 ng/ml



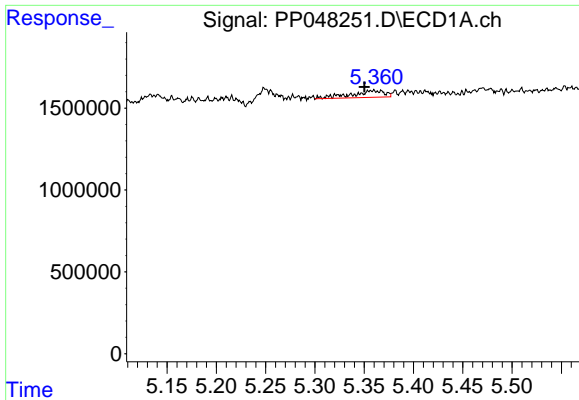
#15 AR-1232-5

R.T.: 5.623 min
 Delta R.T.: -0.002 min
 Response: 2207179
 Conc: 135.10 ng/ml



#15 AR-1232-5

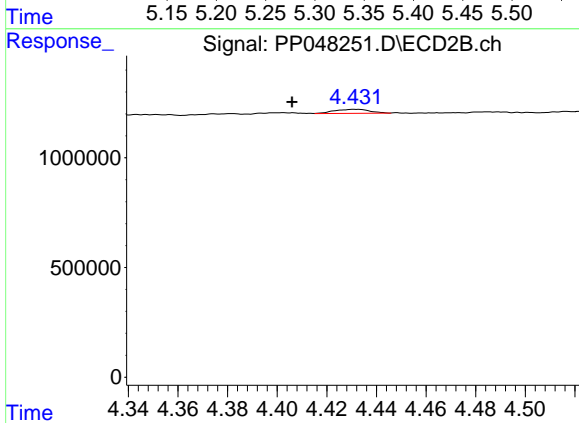
R.T.: 4.843 min
 Delta R.T.: -0.026 min
 Response: 277449
 Conc: 14.16 ng/ml



#17 AR-1242-2

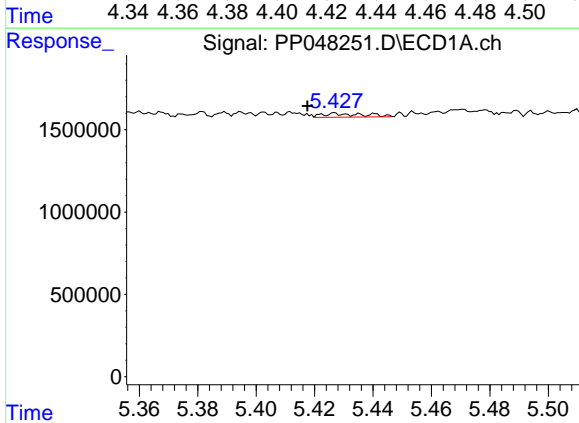
R.T.: 5.358 min
 Delta R.T.: 0.008 min
 Response: 940630
 Conc: 11.44 ng/ml

Instrument :
 ECD_P
 ClientSampleId :



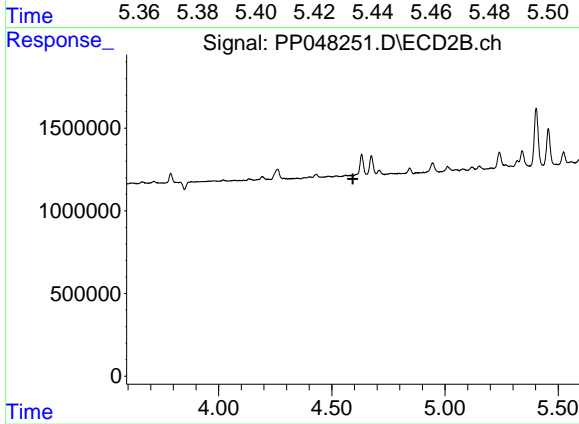
#17 AR-1242-2

R.T.: 4.431 min
 Delta R.T.: 0.025 min
 Response: 182555
 Conc: 2.75 ng/ml



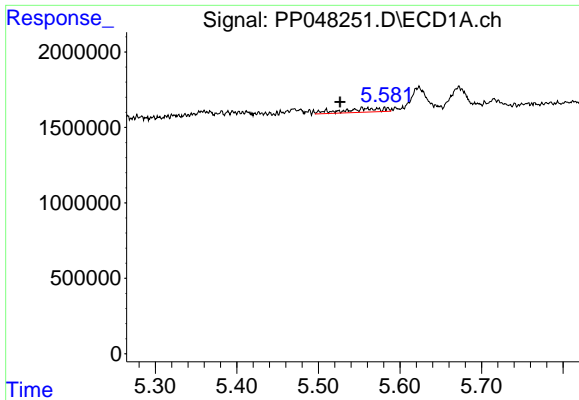
#18 AR-1242-3

R.T.: 5.427 min
 Delta R.T.: 0.010 min
 Response: 221459
 Conc: 4.51 ng/ml



#18 AR-1242-3

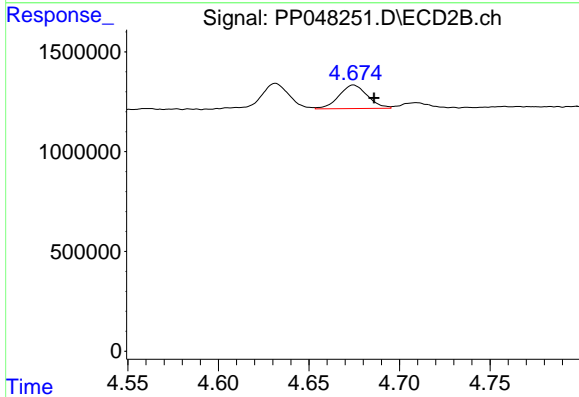
R.T.: 0.000 min
 Exp R.T.: 4.593 min
 Response: 0
 Conc: N.D.



#19 AR-1242-4

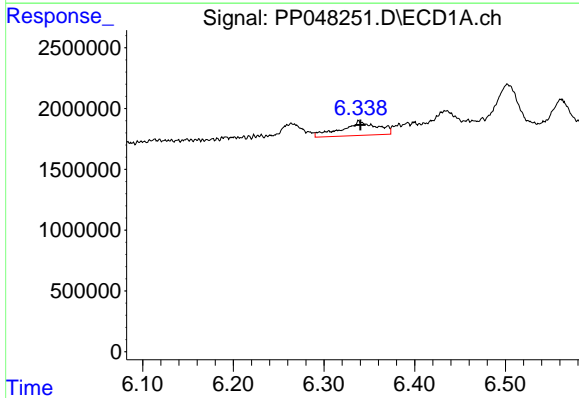
R.T.: 5.510 min
 Delta R.T.: -0.017 min
 Response: 903852
 Conc: 22.84 ng/ml

Instrument :
 ECD_P
 ClientSampleId :



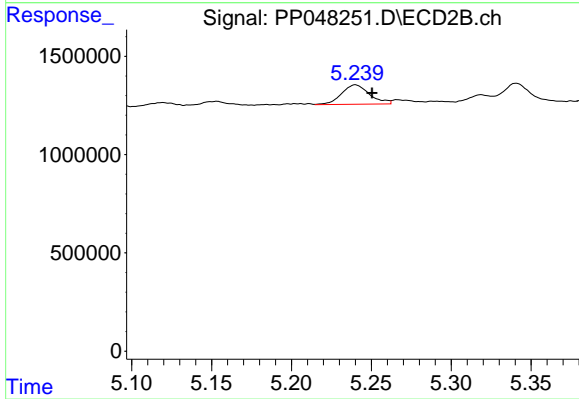
#19 AR-1242-4

R.T.: 4.675 min
 Delta R.T.: -0.011 min
 Response: 1287923
 Conc: 40.10 ng/ml



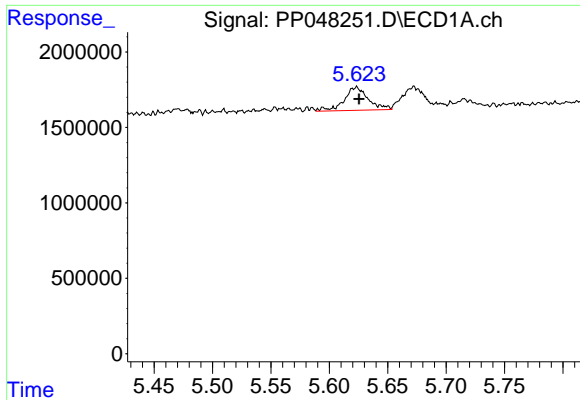
#20 AR-1242-5

R.T.: 6.340 min
 Delta R.T.: 0.000 min
 Response: 3178094
 Conc: 74.62 ng/ml



#20 AR-1242-5

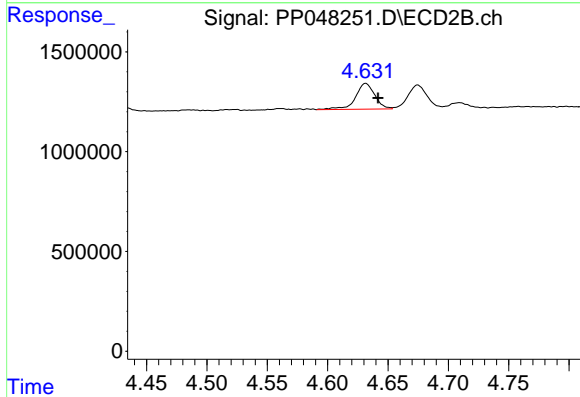
R.T.: 5.240 min
 Delta R.T.: -0.010 min
 Response: 1209637
 Conc: 28.96 ng/ml



#22 AR-1248-2

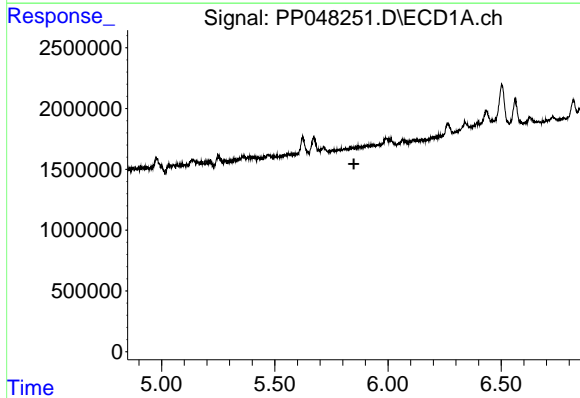
R.T.: 5.623 min
 Delta R.T.: -0.002 min
 Response: 2207179
 Conc: 38.59 ng/ml

Instrument :
 ECD_P
 ClientSampleId :



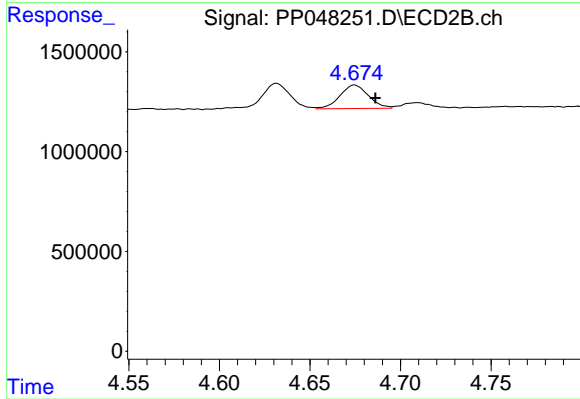
#22 AR-1248-2

R.T.: 4.632 min
 Delta R.T.: -0.010 min
 Response: 1431829
 Conc: 30.07 ng/ml



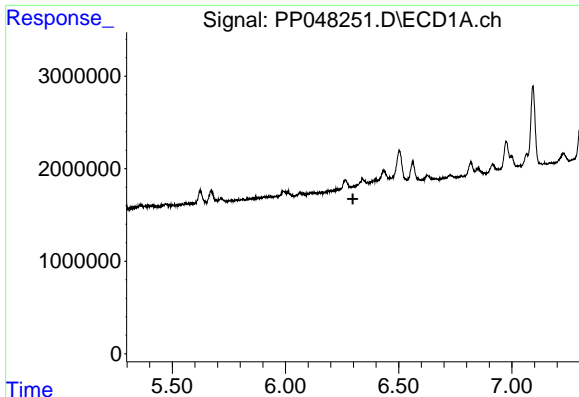
#23 AR-1248-3

R.T.: 0.000 min
 Exp R.T. : 5.849 min
 Response: 0
 Conc: N.D.



#23 AR-1248-3

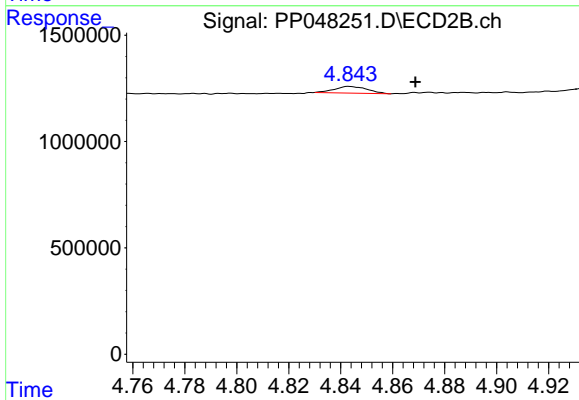
R.T.: 4.675 min
 Delta R.T.: -0.011 min
 Response: 1287923
 Conc: 26.00 ng/ml



#24 AR-1248-4

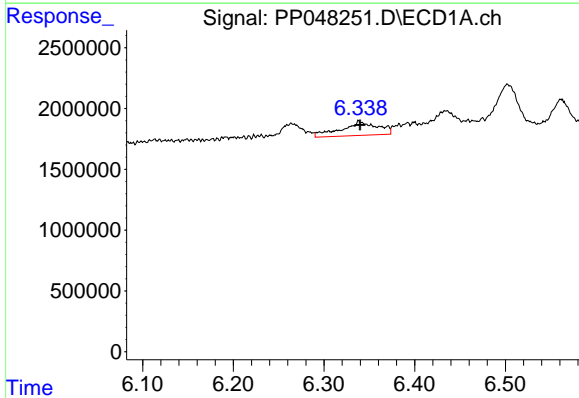
R.T.: 0.000 min
 Exp R.T.: 6.298 min
 Response: 0
 Conc: N.D.

Instrument :
 ECD_P
 ClientSampleId :



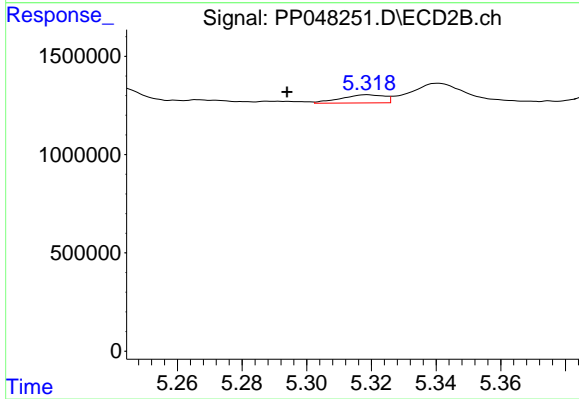
#24 AR-1248-4

R.T.: 4.843 min
 Delta R.T.: -0.026 min
 Response: 277449
 Conc: 4.76 ng/ml



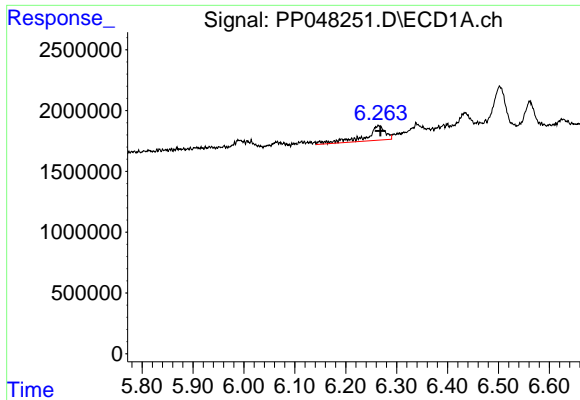
#25 AR-1248-5

R.T.: 6.340 min
 Delta R.T.: 0.000 min
 Response: 3178094
 Conc: 41.78 ng/ml



#25 AR-1248-5

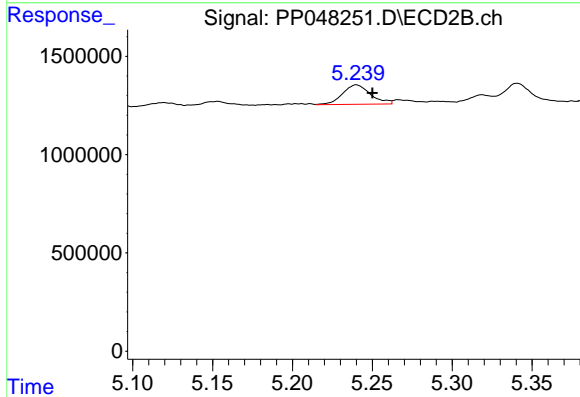
R.T.: 5.319 min
 Delta R.T.: 0.025 min
 Response: 386095
 Conc: 6.40 ng/ml



#26 AR-1254-1

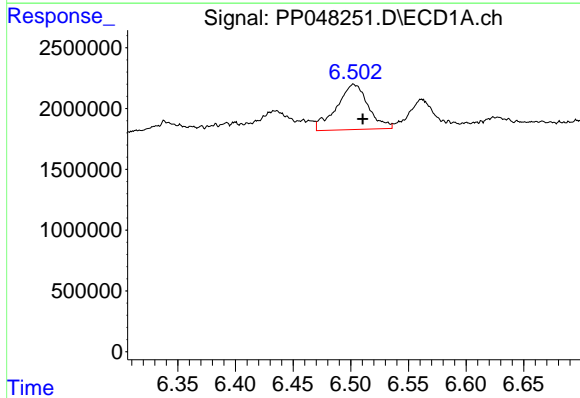
R.T.: 6.265 min
 Delta R.T.: -0.003 min
 Response: 3193498
 Conc: 43.99 ng/ml

Instrument :
 ECD_P
 ClientSampleId :



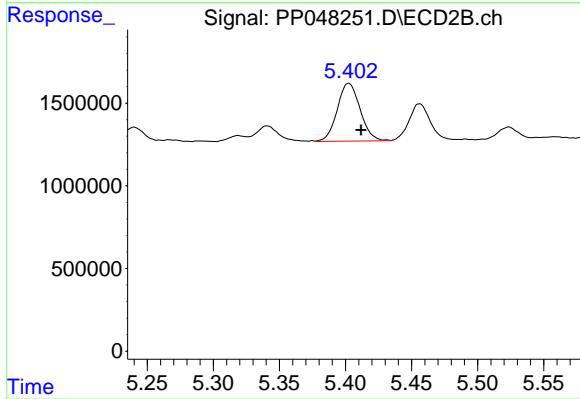
#26 AR-1254-1

R.T.: 5.240 min
 Delta R.T.: -0.010 min
 Response: 1209637
 Conc: 13.80 ng/ml



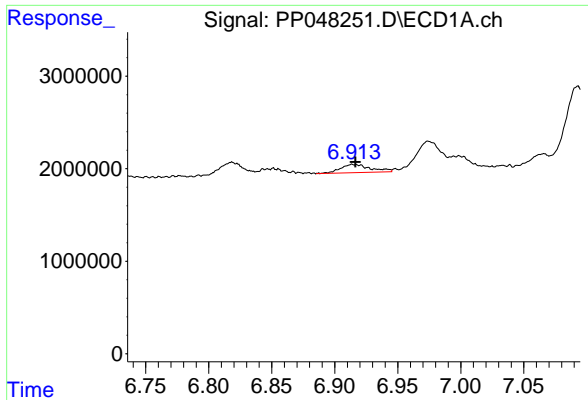
#27 AR-1254-2

R.T.: 6.503 min
 Delta R.T.: -0.008 min
 Response: 7080692
 Conc: 59.51 ng/ml



#27 AR-1254-2

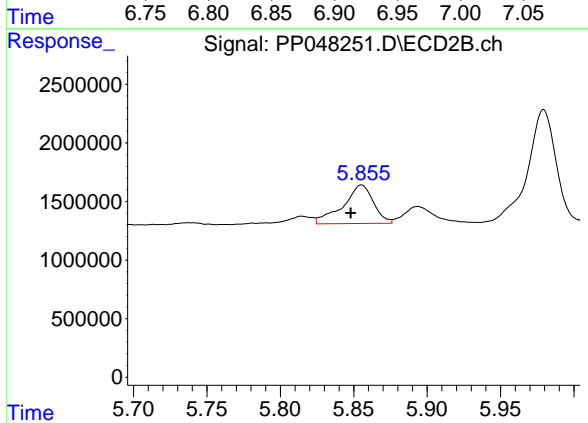
R.T.: 5.402 min
 Delta R.T.: -0.009 min
 Response: 4222789
 Conc: 56.20 ng/ml



#28 AR-1254-3

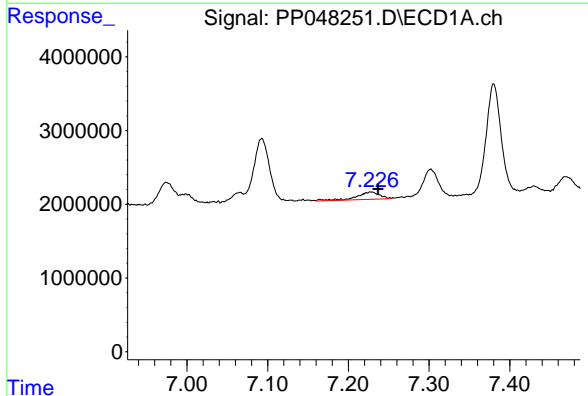
R.T.: 6.915 min
Delta R.T.: -0.001 min
Response: 1460501
Conc: 12.29 ng/ml

Instrument :
ECD_P
ClientSampleId :



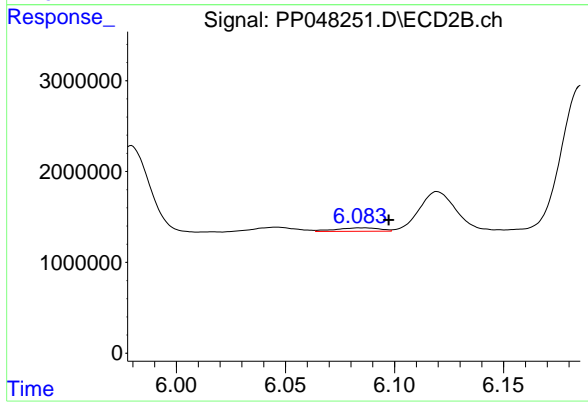
#28 AR-1254-3

R.T.: 5.855 min
Delta R.T.: 0.007 min
Response: 4756040
Conc: 38.76 ng/ml



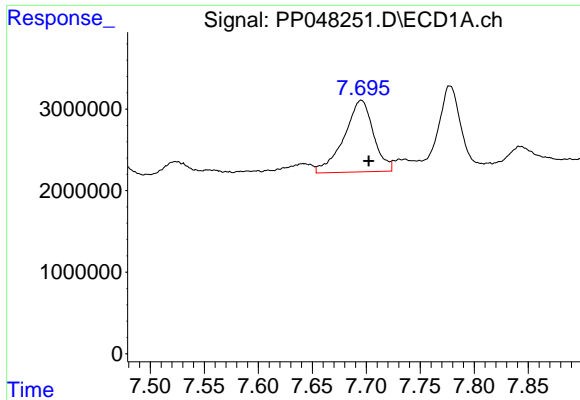
#29 AR-1254-4

R.T.: 7.228 min
Delta R.T.: -0.009 min
Response: 2017674
Conc: 22.37 ng/ml



#29 AR-1254-4

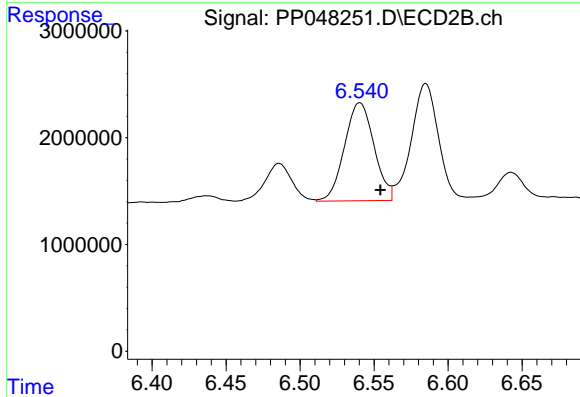
R.T.: 6.084 min
Delta R.T.: -0.014 min
Response: 534775
Conc: 7.12 ng/ml



#30 AR-1254-5

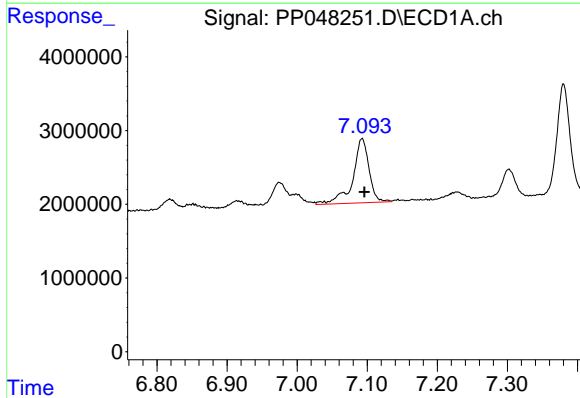
R.T.: 7.695 min
 Delta R.T.: -0.007 min
 Response: 16608864
 Conc: 179.24 ng/ml

Instrument :
 ECD_P
 ClientSampleId :



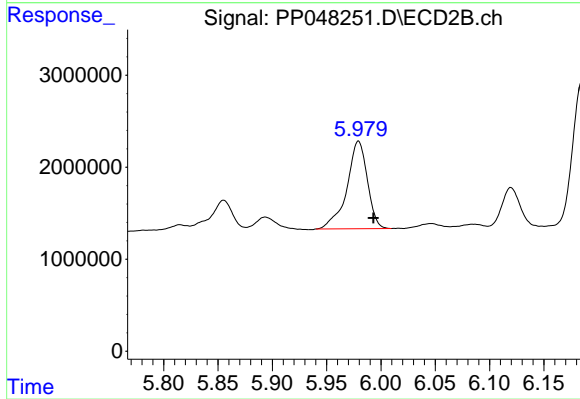
#30 AR-1254-5

R.T.: 6.540 min
 Delta R.T.: -0.014 min
 Response: 12764350
 Conc: 126.08 ng/ml



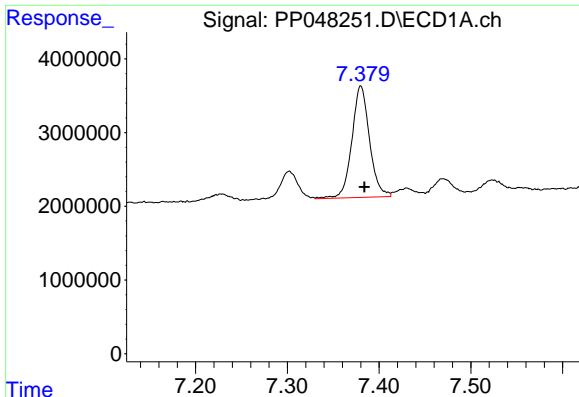
#31 AR-1260-1

R.T.: 7.093 min
 Delta R.T.: -0.003 min
 Response: 14033775
 Conc: 150.36 ng/ml



#31 AR-1260-1

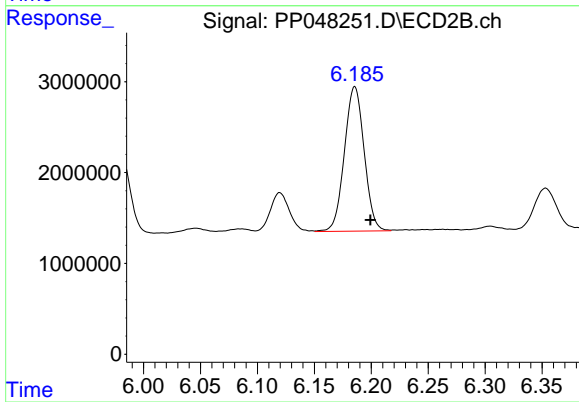
R.T.: 5.979 min
 Delta R.T.: -0.014 min
 Response: 12519266
 Conc: 146.25 ng/ml



#32 AR-1260-2

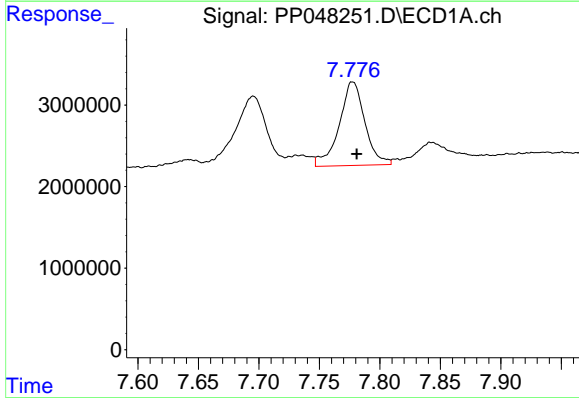
R.T.: 7.380 min
 Delta R.T.: -0.004 min
 Response: 20241228
 Conc: 181.07 ng/ml

Instrument :
 ECD_P
 ClientSampleId :



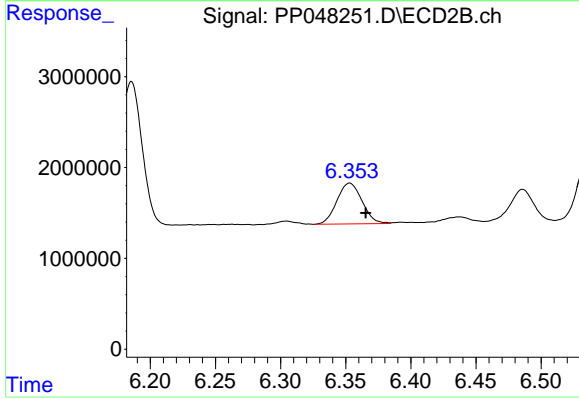
#32 AR-1260-2

R.T.: 6.186 min
 Delta R.T.: -0.014 min
 Response: 19176026
 Conc: 186.04 ng/ml



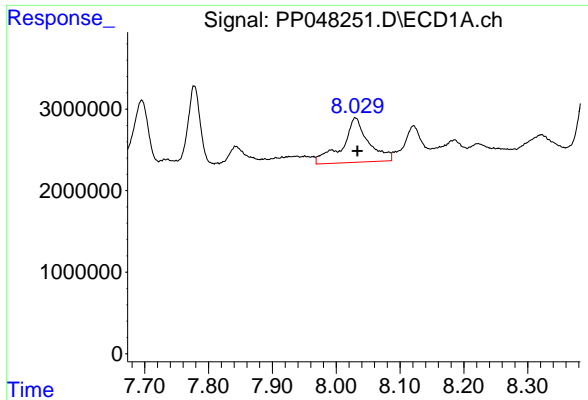
#33 AR-1260-3

R.T.: 7.778 min
 Delta R.T.: -0.003 min
 Response: 15179884
 Conc: 177.22 ng/ml



#33 AR-1260-3

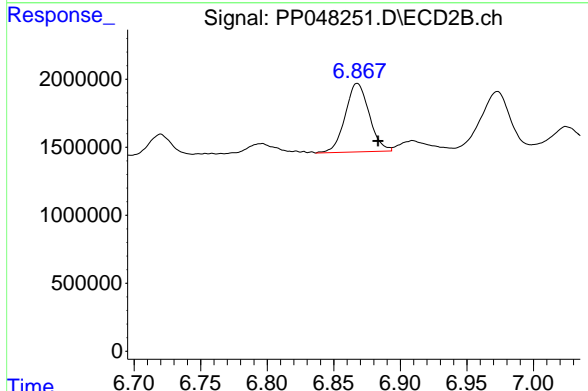
R.T.: 6.353 min
 Delta R.T.: -0.012 min
 Response: 6023472
 Conc: 60.83 ng/ml



#34 AR-1260-4

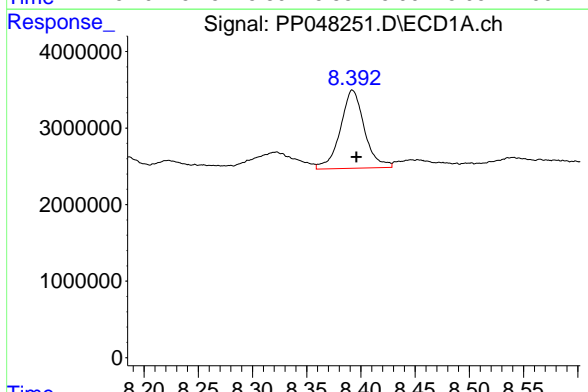
R.T.: 8.030 min
 Delta R.T.: -0.003 min
 Response: 15553406
 Conc: 149.90 ng/ml

Instrument :
 ECD_P
 ClientSampleId :



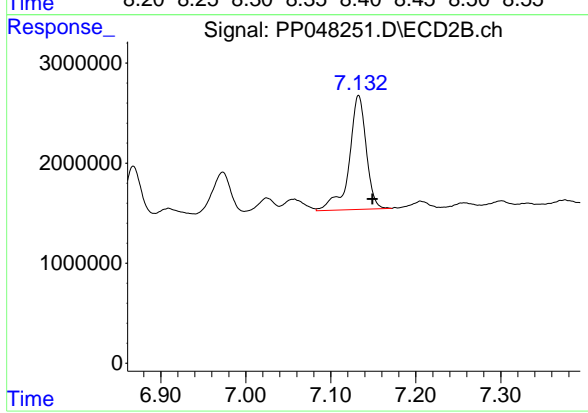
#34 AR-1260-4

R.T.: 6.868 min
 Delta R.T.: -0.016 min
 Response: 6305230
 Conc: 75.74 ng/ml



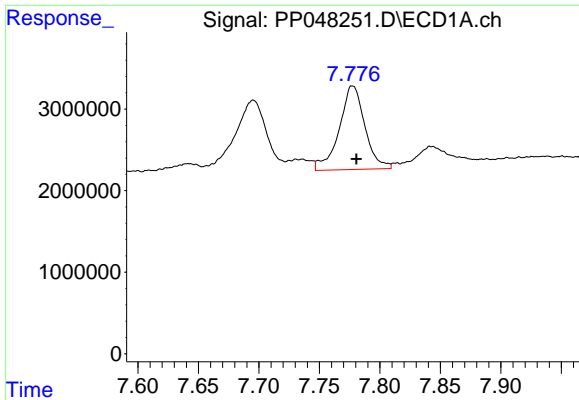
#35 AR-1260-5

R.T.: 8.392 min
 Delta R.T.: -0.003 min
 Response: 15771416
 Conc: 76.43 ng/ml



#35 AR-1260-5

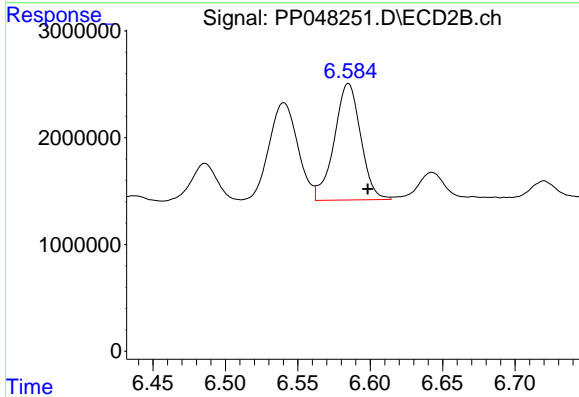
R.T.: 7.133 min
 Delta R.T.: -0.016 min
 Response: 15882849
 Conc: 80.05 ng/ml



#36 AR-1262-1

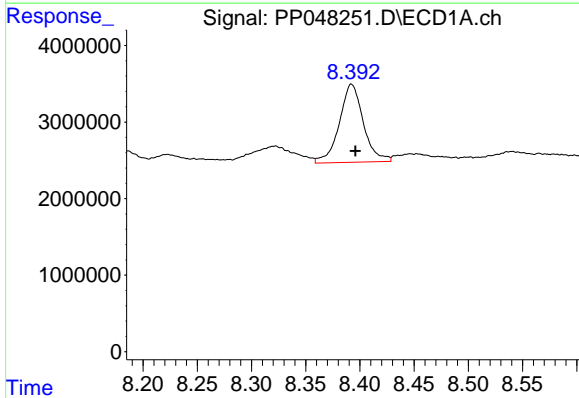
R.T.: 7.778 min
Delta R.T.: -0.003 min
Response: 15179884
Conc: 133.10 ng/ml

Instrument :
ECD_P
ClientSampleId :



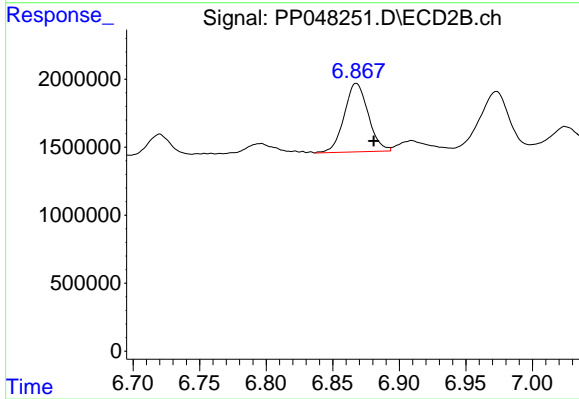
#36 AR-1262-1

R.T.: 6.585 min
Delta R.T.: -0.013 min
Response: 13874276
Conc: 128.42 ng/ml



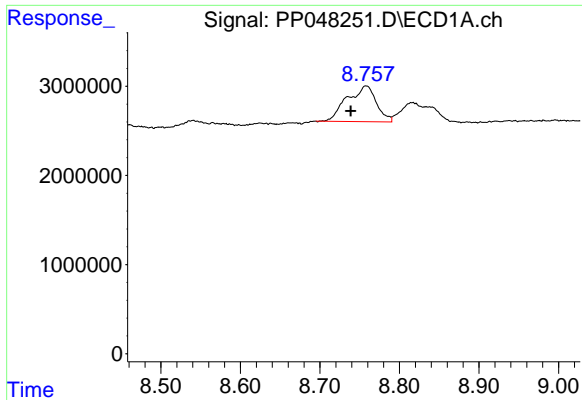
#37 AR-1262-2

R.T.: 8.392 min
Delta R.T.: -0.003 min
Response: 15771416
Conc: 73.99 ng/ml



#37 AR-1262-2

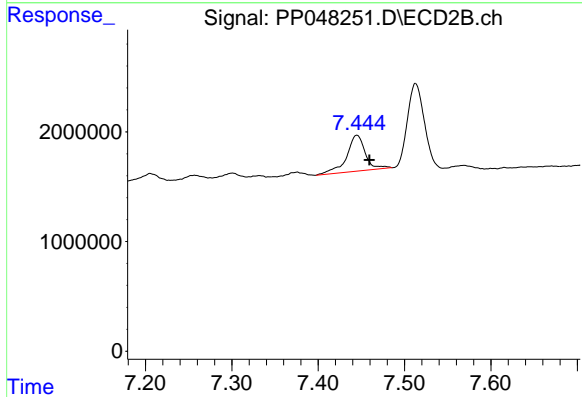
R.T.: 6.868 min
Delta R.T.: -0.013 min
Response: 6305230
Conc: 63.71 ng/ml



#38 AR-1262-3

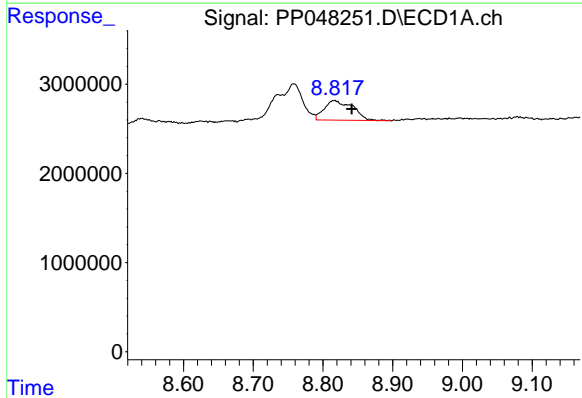
R.T.: 8.758 min
 Delta R.T.: 0.019 min
 Response: 10269564
 Conc: 110.20 ng/ml

Instrument :
 ECD_P
 ClientSampleId :



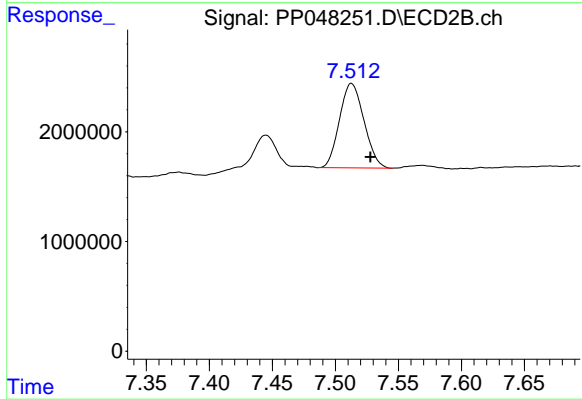
#38 AR-1262-3

R.T.: 7.445 min
 Delta R.T.: -0.014 min
 Response: 4942352
 Conc: 65.67 ng/ml



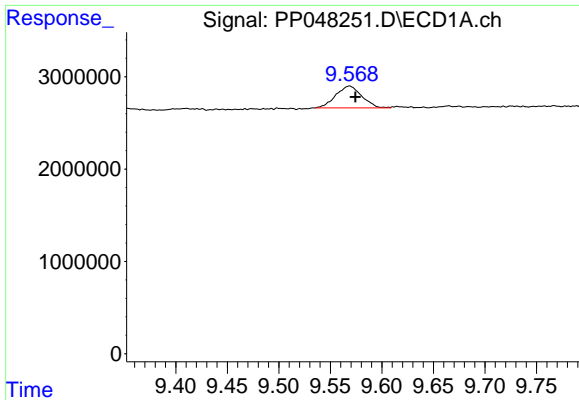
#39 AR-1262-4

R.T.: 8.816 min
 Delta R.T.: -0.025 min
 Response: 6316276
 Conc: 106.23 ng/ml



#39 AR-1262-4

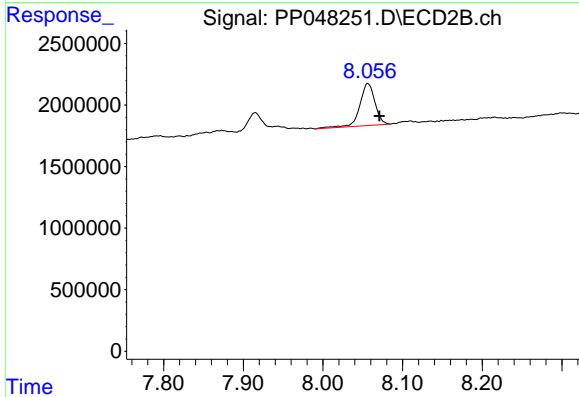
R.T.: 7.513 min
 Delta R.T.: -0.015 min
 Response: 10405480
 Conc: 71.44 ng/ml



#40 AR-1262-5

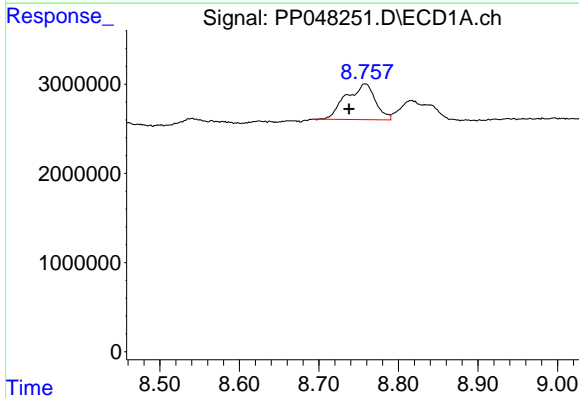
R.T.: 9.568 min
 Delta R.T.: -0.006 min
 Response: 4146636
 Conc: 52.39 ng/ml

Instrument :
 ECD_P
 ClientSampleId :



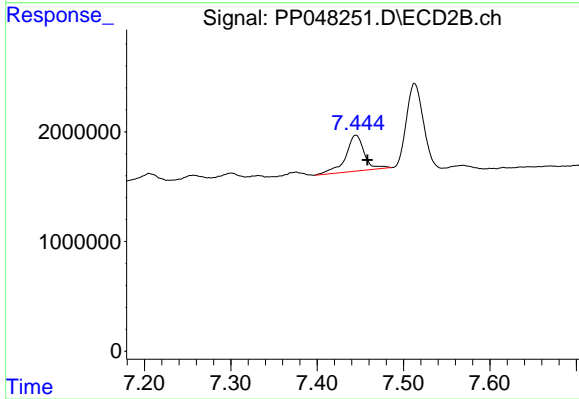
#40 AR-1262-5

R.T.: 8.056 min
 Delta R.T.: -0.014 min
 Response: 4486191
 Conc: 66.47 ng/ml



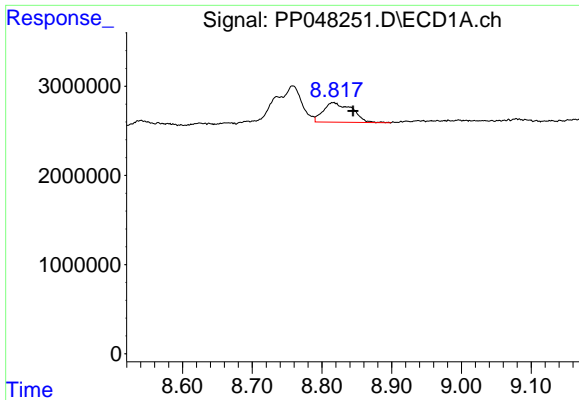
#41 AR-1268-1

R.T.: 8.758 min
 Delta R.T.: 0.021 min
 Response: 10269564
 Conc: 38.82 ng/ml



#41 AR-1268-1

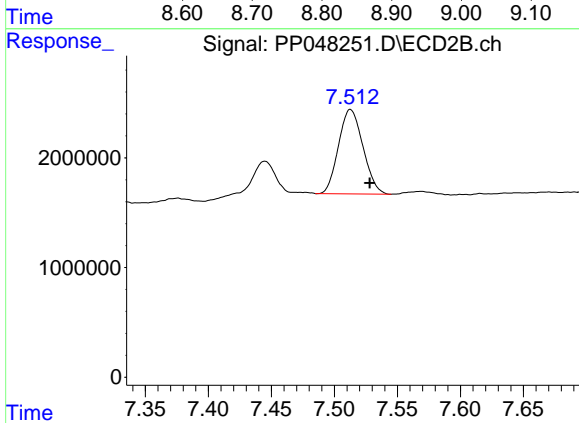
R.T.: 7.445 min
 Delta R.T.: -0.013 min
 Response: 4942352
 Conc: 21.16 ng/ml



#42 AR-1268-2

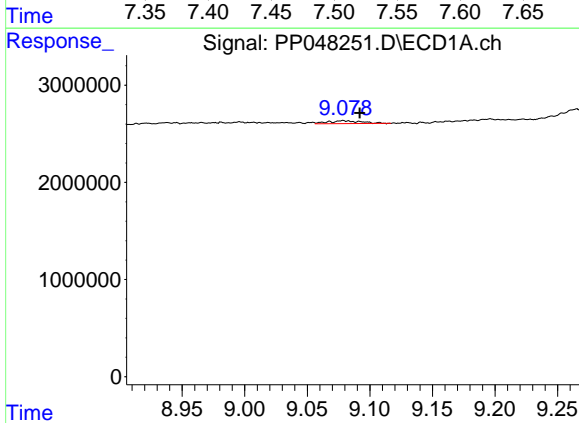
R.T.: 8.816 min
 Delta R.T.: -0.028 min
 Response: 6316276
 Conc: 26.15 ng/ml

Instrument :
 ECD_P
 ClientSampleId :



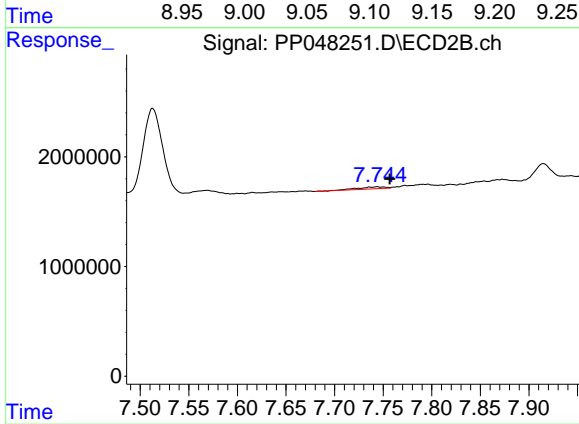
#42 AR-1268-2

R.T.: 7.513 min
 Delta R.T.: -0.015 min
 Response: 10405480
 Conc: 48.09 ng/ml



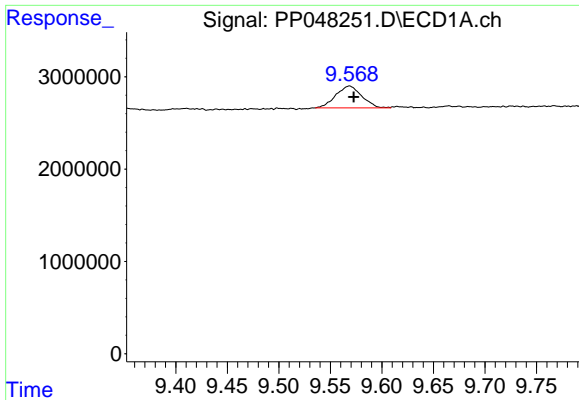
#43 AR-1268-3

R.T.: 9.079 min
 Delta R.T.: -0.013 min
 Response: 534637
 Conc: 2.60 ng/ml



#43 AR-1268-3

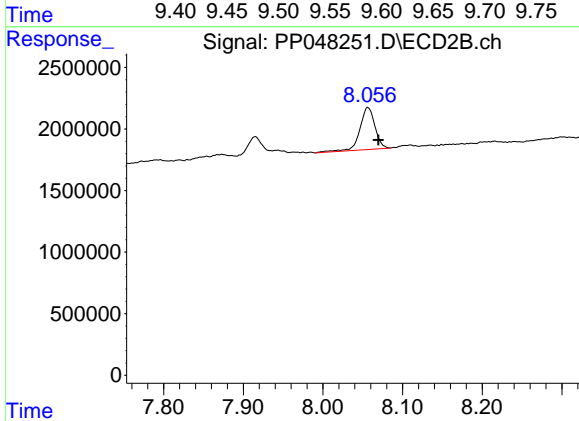
R.T.: 7.744 min
 Delta R.T.: -0.013 min
 Response: 356305
 Conc: 1.92 ng/ml



#44 AR-1268-4

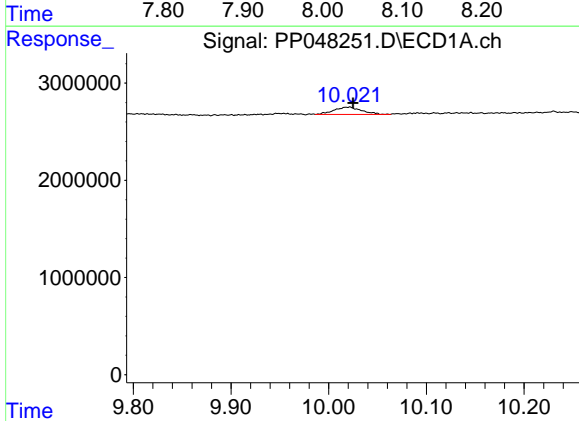
R.T.: 9.568 min
 Delta R.T.: -0.004 min
 Response: 4146636
 Conc: 46.16 ng/ml

Instrument :
 ECD_P
 ClientSampleId :



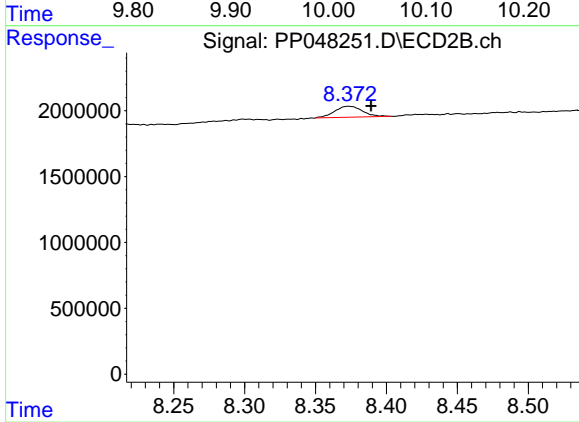
#44 AR-1268-4

R.T.: 8.056 min
 Delta R.T.: -0.013 min
 Response: 4486191
 Conc: 54.61 ng/ml



#45 AR-1268-5

R.T.: 10.020 min
 Delta R.T.: -0.005 min
 Response: 1448030
 Conc: 2.05 ng/ml



#45 AR-1268-5

R.T.: 8.373 min
 Delta R.T.: -0.016 min
 Response: 1146044
 Conc: 1.89 ng/ml