

Data Path : Z:\pestpcbsrv\HPCHEM1\ECD_P\Data\PP053122\
 Data File : PP048252.D
 Signal(s) : Signal #1: ECD1A.ch Signal #2: ECD2B.ch
 Acq On : 31 May 2022 20:10
 Operator : YP\AJ
 Sample : N2954-08
 Misc :
 ALS Vial : 41 Sample Multiplier: 1

Instrument :
 ECD_P
 ClientSampleId :

Integration File signal 1: autoint1.e
 Integration File signal 2: autoint2.e
 Quant Time: Jun 01 07:27:16 2022
 Quant Method : Z:\pestpcbsrv\HPCHEM1\ECD_P\methods\PP052722.M
 Quant Title : GC EXTRACTABLES
 QLast Update : Fri May 27 23:53:39 2022
 Response via : Initial Calibration
 Integrator: ChemStation

Volume Inj. : 2 µl
 Signal #1 Phase : ZB-MR1 Signal #2 Phase: ZB-MR2
 Signal #1 Info : 30Mx0.32mmx 0.50µ Signal #2 Info : 30M x 0.32mm x 0.25µm

Compound	RT#1	RT#2	Resp#1	Resp#2	ng/ml	ng/ml
System Monitoring Compounds						
1) SA Tetrachlo...	4.035	3.216	55970364	45716576	23.901	23.197
2) SA Decachlor...	10.386	8.648	38085446	31177660	19.595	19.287
Target Compounds						
3) L1 AR-1016-1	5.323	4.377	1944618	1671320	23.060	24.850
4) L1 AR-1016-2	5.358	4.397	16574238	738556	140.084	7.930 #
5) L1 AR-1016-3	5.425	0.000	6240628	0	92.350	N.D. #
6) L1 AR-1016-4	0.000	4.632	0	42737142	N.D.	1121.685 #
7) L1 AR-1016-5	5.847	4.860	1740851	1382005	30.905	28.945
8) L2 AR-1221-1	4.271	3.473f	7415962	133450	280.522	6.438 #
9) L2 AR-1221-2	4.368	3.518f	966967	4481329	47.213	291.760 #
10) L2 AR-1221-3	4.457	0.000	156458	0	2.499	N.D. #
11) L3 AR-1232-1	4.457	0.000	156458	0	3.012	N.D. #
12) L3 AR-1232-2	5.028	4.397	4839767	738556	201.591	18.331 #
13) L3 AR-1232-3	5.358	0.000	16574238	0	334.009	N.D. #
14) L3 AR-1232-4	0.000	4.675	0	53244853	N.D.	3068.106 #
15) L3 AR-1232-5	5.623	4.860	52254456	1382005	3198.470	70.555 #
16) L4 AR-1242-1	5.323	4.377	1944618	1671320	34.774	35.048
17) L4 AR-1242-2	5.358	4.397	16574238	738556	201.524	11.115 #
18) L4 AR-1242-3	5.425	0.000	6240628	0	127.128	N.D. #
19) L4 AR-1242-4	0.000	4.675	0	53244853	N.D.	1657.751 #
20) L4 AR-1242-5	6.340	5.240	20600590	36783336	483.704	880.781 #
21) L5 AR-1248-1	5.323	4.377	1944618	1671320	45.083	45.664
22) L5 AR-1248-2	5.623	4.632	52254456	42737142	913.719	897.397
23) L5 AR-1248-3	5.847	4.675	1740851	53244853	25.720	1074.772 #
24) L5 AR-1248-4	0.000	4.860	0	1382005	N.D.	23.722 #
25) L5 AR-1248-5	6.340	5.283	20600590	2272928	270.823	37.683 #
26) L6 AR-1254-1	6.263	5.240	45888437	36783336	632.106	419.593 #
27) L6 AR-1254-2	6.504	5.401	88036412	76649943	739.879	1020.149 #
28) L6 AR-1254-3	6.913	5.855	34907065	105.1E6	293.846	856.987 #
29) L6 AR-1254-4	7.229	6.085	28108014	13379479	311.621	178.185 #
30) L6 AR-1254-5	7.696	6.540	245.2E6	195.5E6	2645.673	1931.474 #
31) L7 AR-1260-1	7.093	5.979	222.6E6	208.1E6	2385.143	2431.534
32) L7 AR-1260-2	7.381	6.185	302.0E6	296.9E6	2701.914	2880.804
33) L7 AR-1260-3	7.777	6.352	192.7E6	117.7E6	2250.053	1188.937 #
34) L7 AR-1260-4	8.030	6.867f	145.9E6	114.3E6	1406.481	1373.200
35) L7 AR-1260-5	8.392	7.133f	273.7E6	284.9E6	1326.444	1435.694
36) L8 AR-1262-1	7.777	6.585	192.7E6	195.8E6	1689.898	1812.488
37) L8 AR-1262-2	8.392	6.867	273.7E6	114.3E6	1284.177	1155.163
38) L8 AR-1262-3	8.758f	7.444	195.2E6	69619316	2094.546	925.115 #
39) L8 AR-1262-4	8.817f	7.513f	114.0E6	216.5E6	1917.334	1486.720
40) L8 AR-1262-5	9.568	8.056f	87096039	78689114	1100.426	1165.885
41) L9 AR-1268-1	8.758f	7.444	195.2E6	69619316	737.894	298.096 #

Data Path : Z:\pestpcbsrv\HPCHEM1\ECD_P\Data\PP053122\
 Data File : PP048252.D
 Signal(s) : Signal #1: ECD1A.ch Signal #2: ECD2B.ch
 Acq On : 31 May 2022 20:10
 Operator : YP\AJ
 Sample : N2954-08
 Misc :
 ALS Vial : 41 Sample Multiplier: 1

Instrument :
 ECD_P
 ClientSampleId :

Integration File signal 1: autoint1.e
 Integration File signal 2: autoint2.e
 Quant Time: Jun 01 07:27:16 2022
 Quant Method : Z:\pestpcbsrv\HPCHEM1\ECD_P\methods\PP052722.M
 Quant Title : GC EXTRACTABLES
 QLast Update : Fri May 27 23:53:39 2022
 Response via : Initial Calibration
 Integrator: ChemStation

Volume Inj. : 2 µl
 Signal #1 Phase : ZB-MR1 Signal #2 Phase: ZB-MR2
 Signal #1 Info : 30Mx0.32mmx 0.50µ Signal #2 Info : 30M x 0.32mm x 0.25µm

	Compound	RT#1	RT#2	Resp#1	Resp#2	ng/ml	ng/ml
42)	L9 AR-1268-2	8.817f	7.513f	114.0E6	216.5E6	472.065	1000.789 #
43)	L9 AR-1268-3	9.088	7.741f	4690507	3704957	22.816	19.932
44)	L9 AR-1268-4	9.568	8.056	87096039	78689114	969.570	957.868
45)	L9 AR-1268-5	10.020	8.373f	22356925	18147628	31.665	29.949

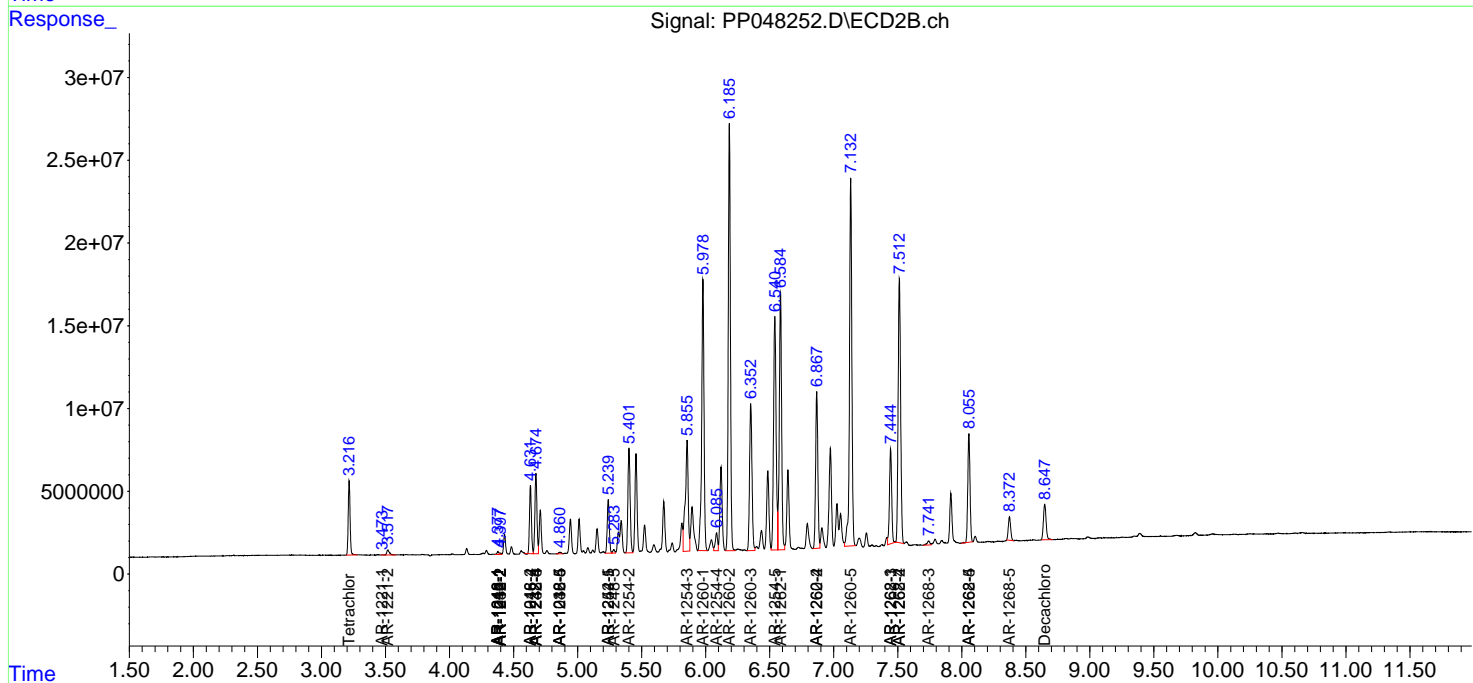
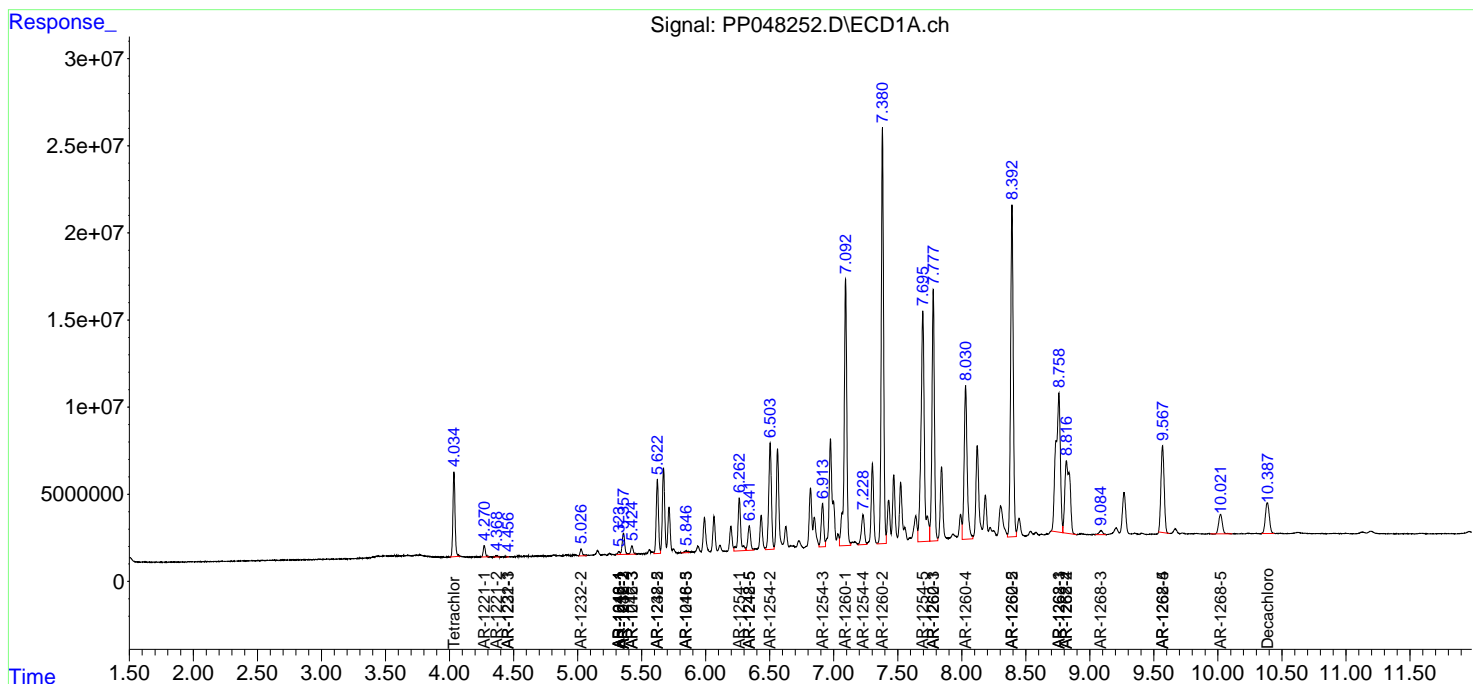
(f)=RT Delta > 1/2 Window (#)=Amounts differ by > 25% (m)=manual int.

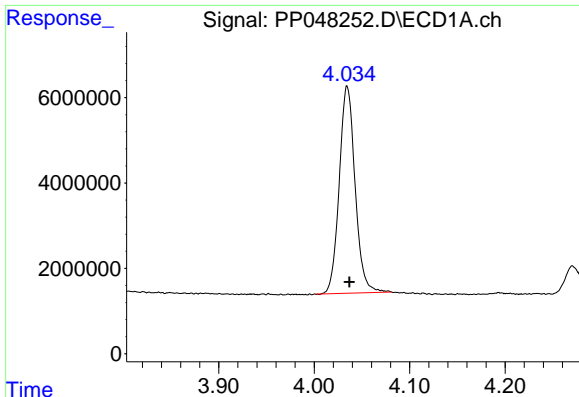
Data Path : Z:\pestpcbsrv\HPCHEM1\ECD_P\Data\PP053122\
 Data File : PP048252.D
 Signal(s) : Signal #1: ECD1A.ch Signal #2: ECD2B.ch
 Acq On : 31 May 2022 20:10
 Operator : YP\AJ
 Sample : N2954-08
 Misc :
 ALS Vial : 41 Sample Multiplier: 1

Instrument :
 ECD_P
 ClientSampleId :

Integration File signal 1: autoint1.e
 Integration File signal 2: autoint2.e
 Quant Time: Jun 01 07:27:16 2022
 Quant Method : Z:\pestpcbsrv\HPCHEM1\ECD_P\methods\PP052722.M
 Quant Title : GC EXTRACTABLES
 QLast Update : Fri May 27 23:53:39 2022
 Response via : Initial Calibration
 Integrator: ChemStation

Volume Inj. : 2 µl
 Signal #1 Phase : ZB-MR1 Signal #2 Phase: ZB-MR2
 Signal #1 Info : 30Mx0.32mmx 0.50µ Signal #2 Info : 30M x 0.32mm x 0.25µm

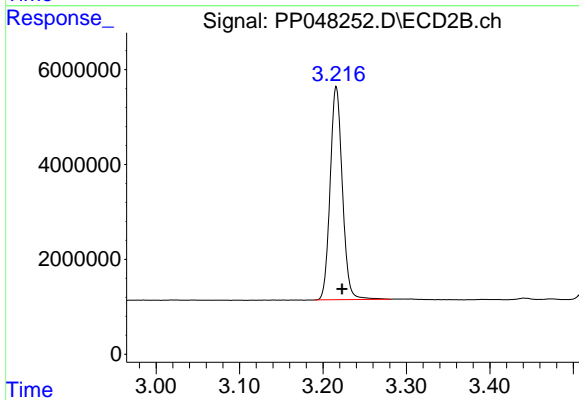




#1 Tetrachloro-m-xylene

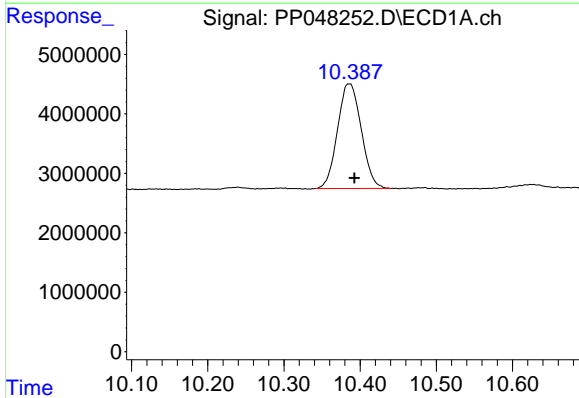
R.T.: 4.035 min
Delta R.T.: -0.002 min
Response: 55970364
Conc: 23.90 ng/ml

Instrument :
ECD_P
ClientSampleId :



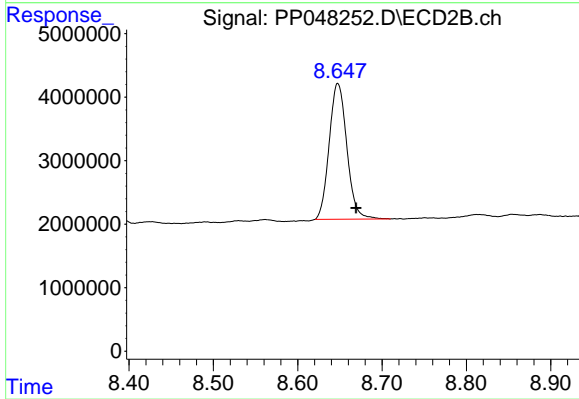
#1 Tetrachloro-m-xylene

R.T.: 3.216 min
Delta R.T.: -0.007 min
Response: 45716576
Conc: 23.20 ng/ml



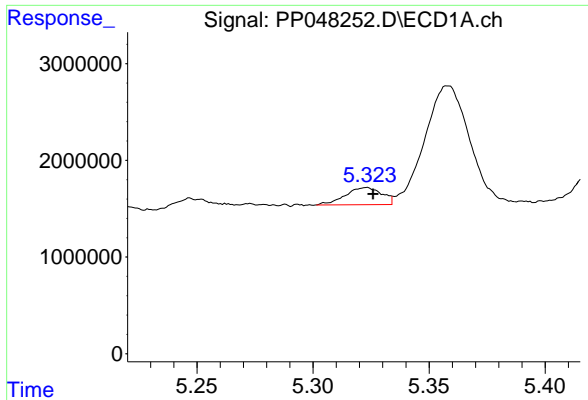
#2 Decachlorobiphenyl

R.T.: 10.386 min
Delta R.T.: -0.007 min
Response: 38085446
Conc: 19.60 ng/ml



#2 Decachlorobiphenyl

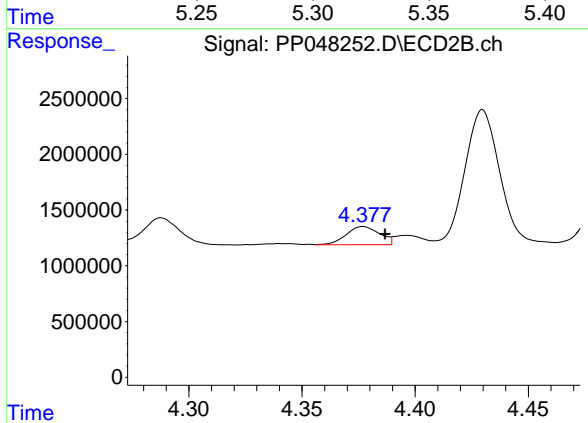
R.T.: 8.648 min
Delta R.T.: -0.021 min
Response: 31177660
Conc: 19.29 ng/ml



#3 AR-1016-1

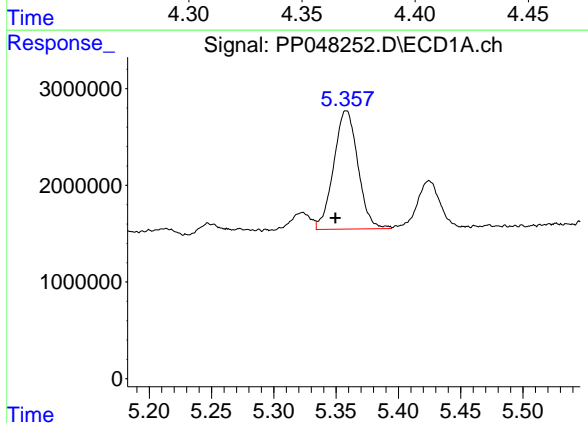
R.T.: 5.323 min
 Delta R.T.: -0.003 min
 Response: 1944618
 Conc: 23.06 ng/ml

Instrument :
 ECD_P
 ClientSampleId :



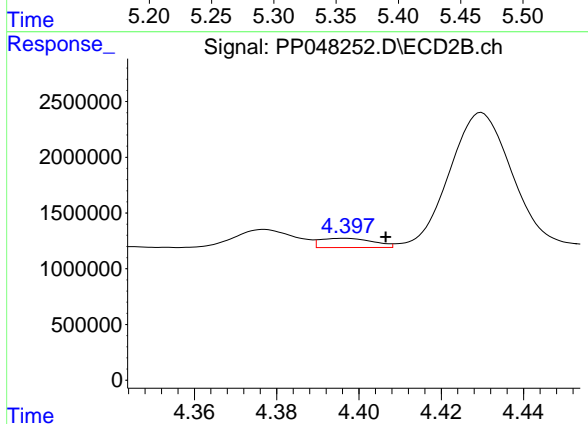
#3 AR-1016-1

R.T.: 4.377 min
 Delta R.T.: -0.010 min
 Response: 1671320
 Conc: 24.85 ng/ml



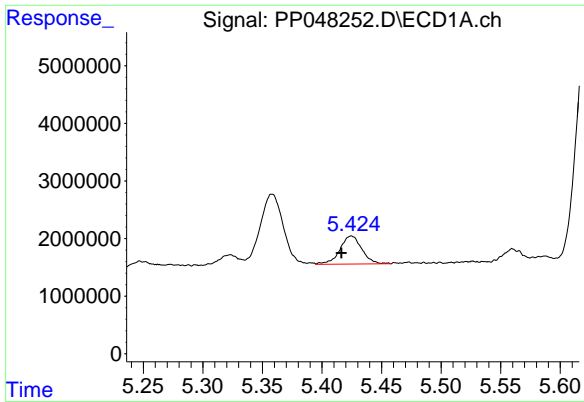
#4 AR-1016-2

R.T.: 5.358 min
 Delta R.T.: 0.009 min
 Response: 16574238
 Conc: 140.08 ng/ml



#4 AR-1016-2

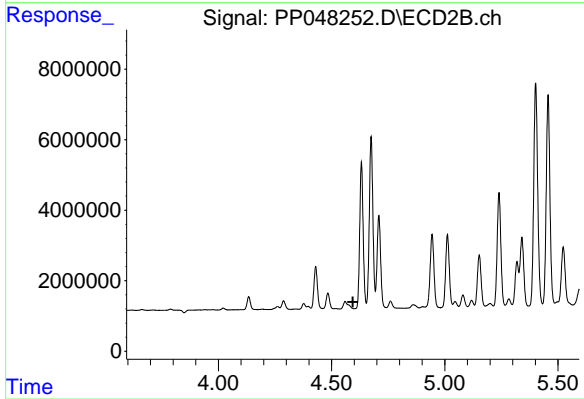
R.T.: 4.397 min
 Delta R.T.: -0.010 min
 Response: 738556
 Conc: 7.93 ng/ml



#5 AR-1016-3

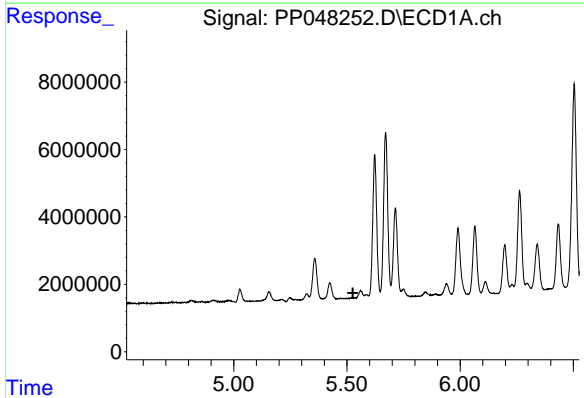
R.T.: 5.425 min
 Delta R.T.: 0.008 min
 Response: 6240628
 Conc: 92.35 ng/ml

Instrument :
 ECD_P
 ClientSampleId :



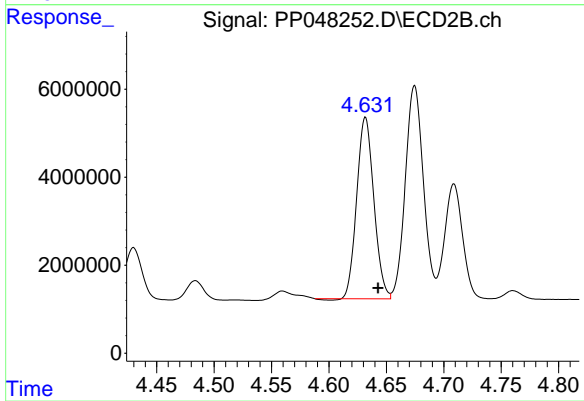
#5 AR-1016-3

R.T.: 0.000 min
 Exp R.T. : 4.594 min
 Response: 0
 Conc: N.D.



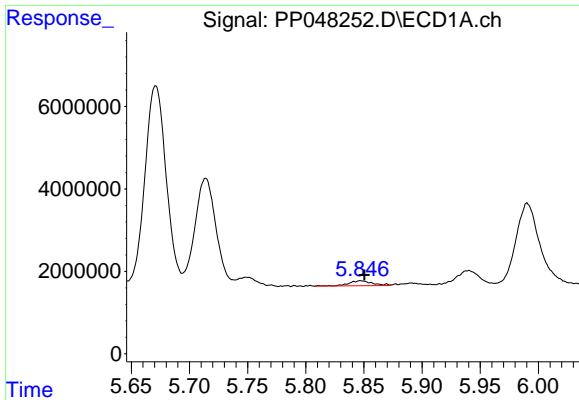
#6 AR-1016-4

R.T.: 0.000 min
 Exp R.T. : 5.526 min
 Response: 0
 Conc: N.D.



#6 AR-1016-4

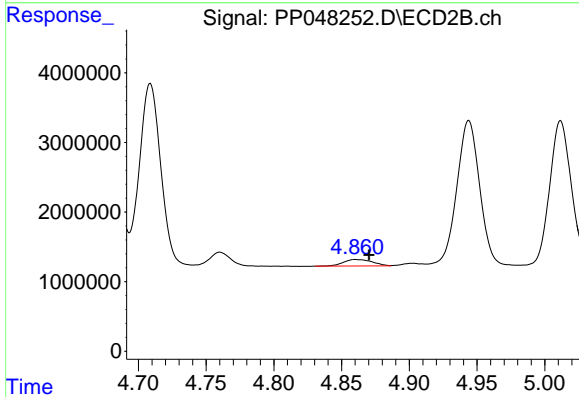
R.T.: 4.632 min
 Delta R.T.: -0.011 min
 Response: 42737142
 Conc: 1121.68 ng/ml



#7 AR-1016-5

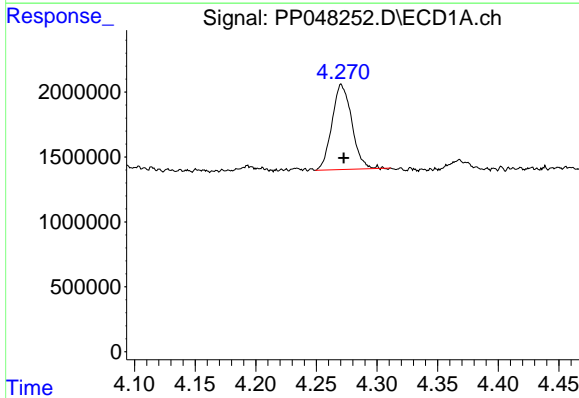
R.T.: 5.847 min
 Delta R.T.: -0.004 min
 Response: 1740851
 Conc: 30.90 ng/ml

Instrument :
 ECD_P
 ClientSampleId :



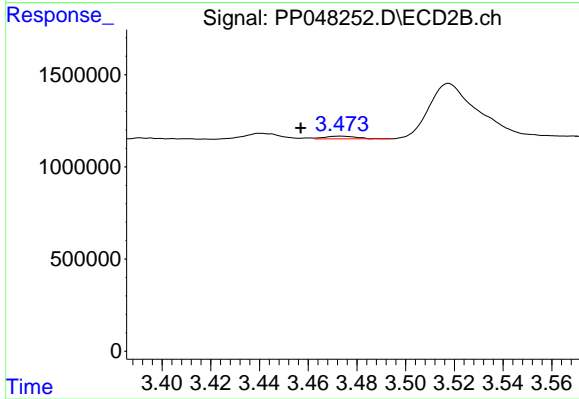
#7 AR-1016-5

R.T.: 4.860 min
 Delta R.T.: -0.010 min
 Response: 1382005
 Conc: 28.95 ng/ml



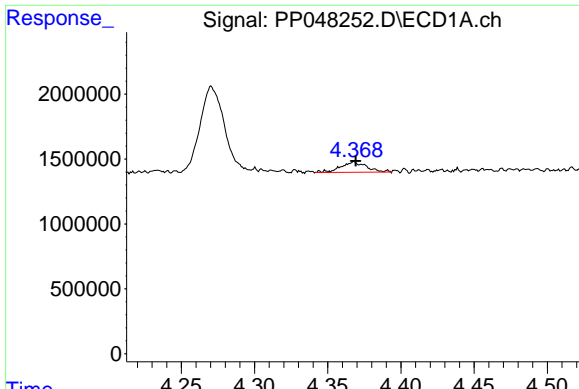
#8 AR-1221-1

R.T.: 4.271 min
 Delta R.T.: -0.002 min
 Response: 7415962
 Conc: 280.52 ng/ml



#8 AR-1221-1

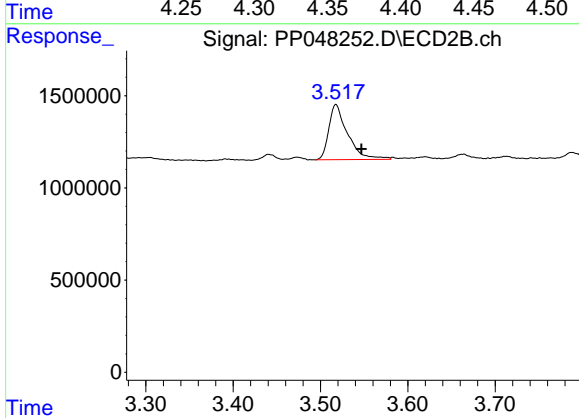
R.T.: 3.473 min
 Delta R.T.: 0.016 min
 Response: 133450
 Conc: 6.44 ng/ml



#9 AR-1221-2

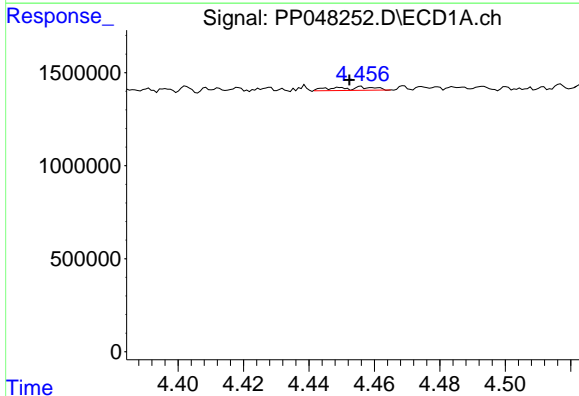
R.T.: 4.368 min
 Delta R.T.: -0.001 min
 Response: 966967
 Conc: 47.21 ng/ml

Instrument :
 ECD_P
 ClientSampleId :



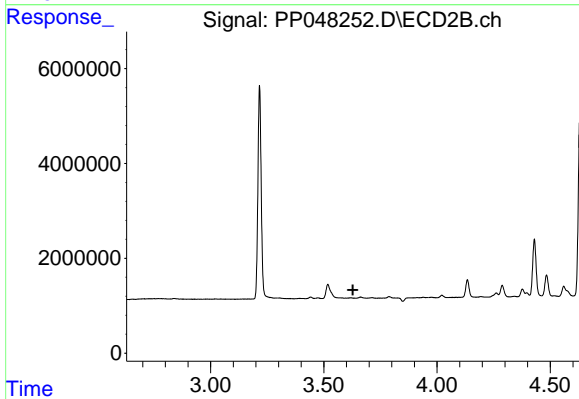
#9 AR-1221-2

R.T.: 3.518 min
 Delta R.T.: -0.029 min
 Response: 4481329
 Conc: 291.76 ng/ml



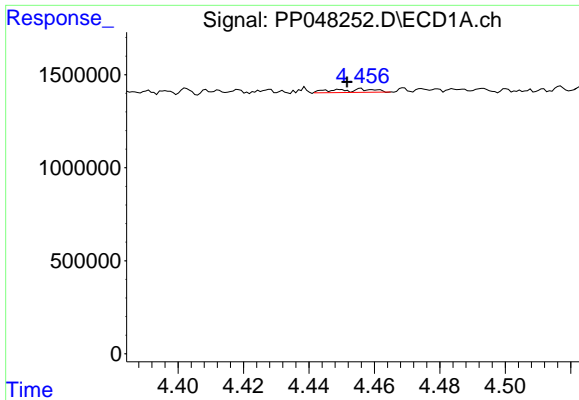
#10 AR-1221-3

R.T.: 4.457 min
 Delta R.T.: 0.004 min
 Response: 156458
 Conc: 2.50 ng/ml



#10 AR-1221-3

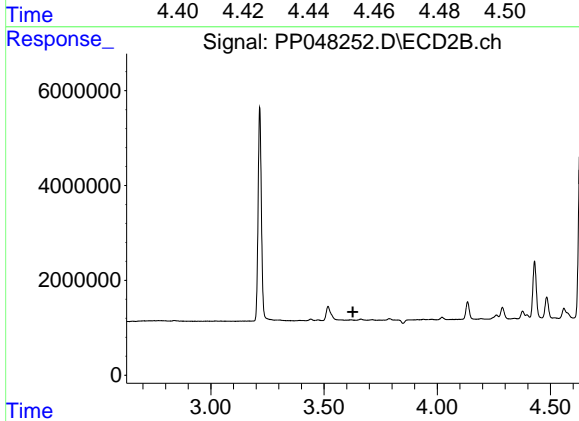
R.T.: 0.000 min
 Exp R.T. : 3.628 min
 Response: 0
 Conc: N.D.



#11 AR-1232-1

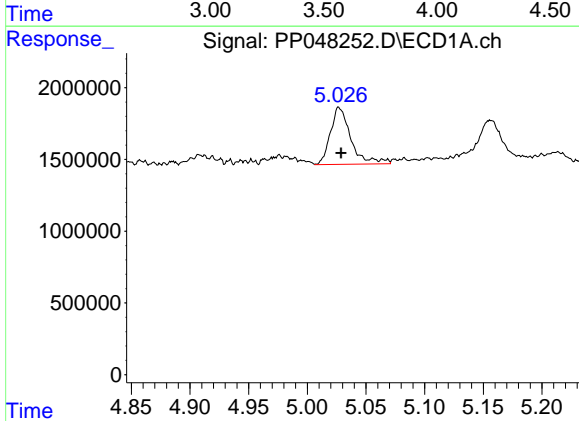
R.T.: 4.457 min
 Delta R.T.: 0.005 min
 Response: 156458
 Conc: 3.01 ng/ml

Instrument :
 ECD_P
 ClientSampleId :



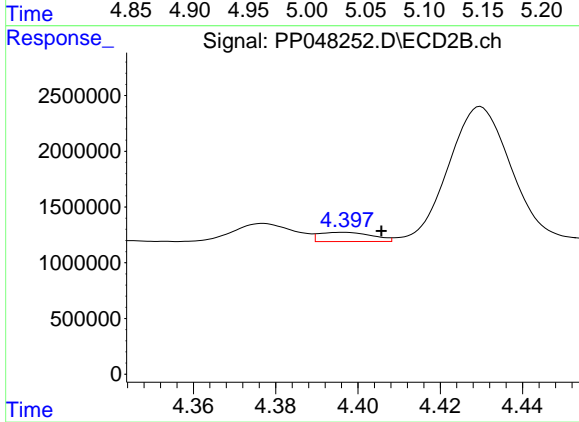
#11 AR-1232-1

R.T.: 0.000 min
 Exp R.T. : 3.627 min
 Response: 0
 Conc: N.D.



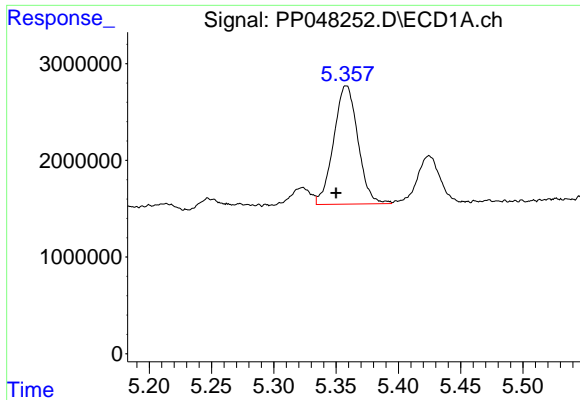
#12 AR-1232-2

R.T.: 5.028 min
 Delta R.T.: -0.001 min
 Response: 4839767
 Conc: 201.59 ng/ml



#12 AR-1232-2

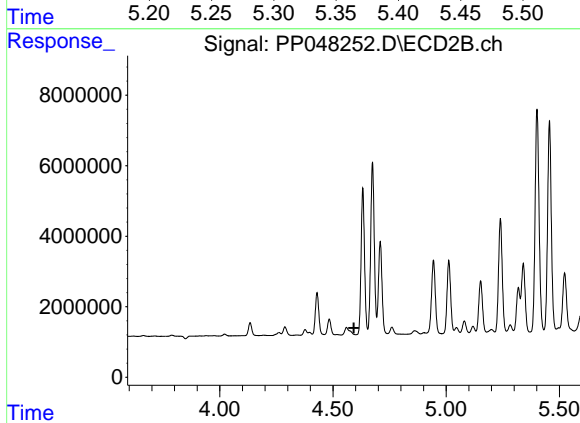
R.T.: 4.397 min
 Delta R.T.: -0.009 min
 Response: 738556
 Conc: 18.33 ng/ml



#13 AR-1232-3

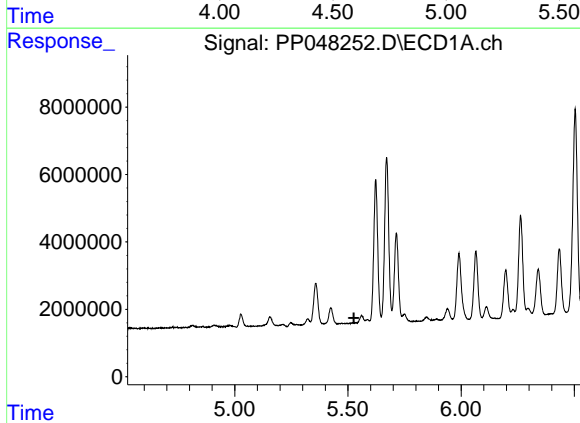
R.T.: 5.358 min
 Delta R.T.: 0.008 min
 Response: 16574238
 Conc: 334.01 ng/ml

Instrument :
 ECD_P
 ClientSampleId :



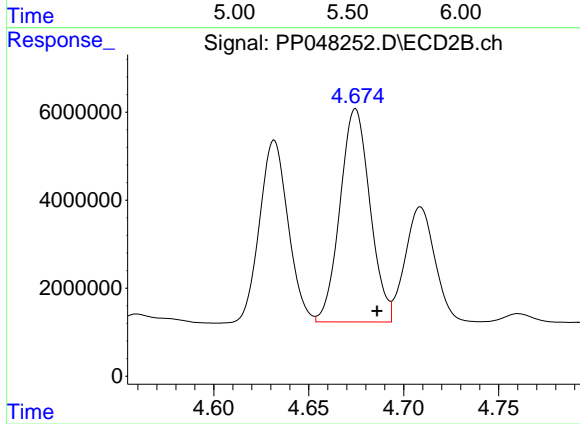
#13 AR-1232-3

R.T.: 0.000 min
 Exp R.T. : 4.593 min
 Response: 0
 Conc: N.D.



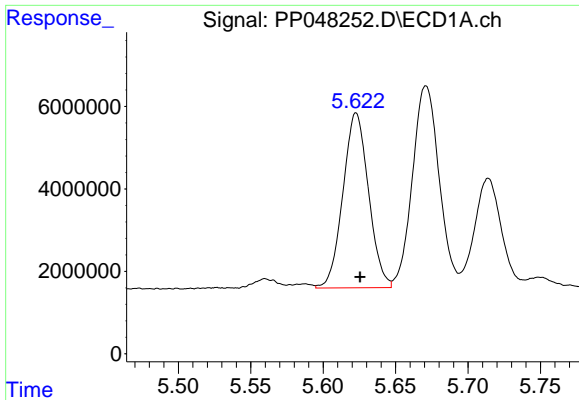
#14 AR-1232-4

R.T.: 0.000 min
 Exp R.T. : 5.527 min
 Response: 0
 Conc: N.D.



#14 AR-1232-4

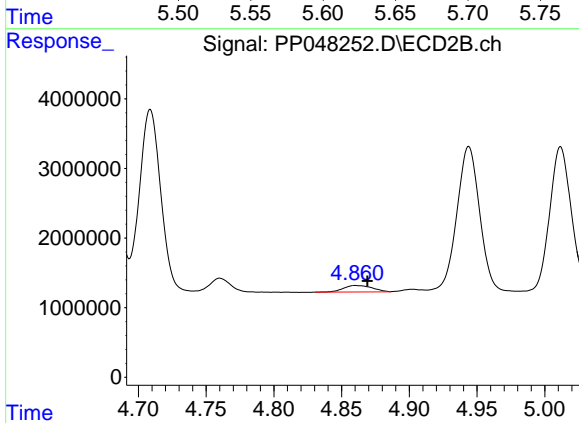
R.T.: 4.675 min
 Delta R.T.: -0.011 min
 Response: 53244853
 Conc: 3068.11 ng/ml



#15 AR-1232-5

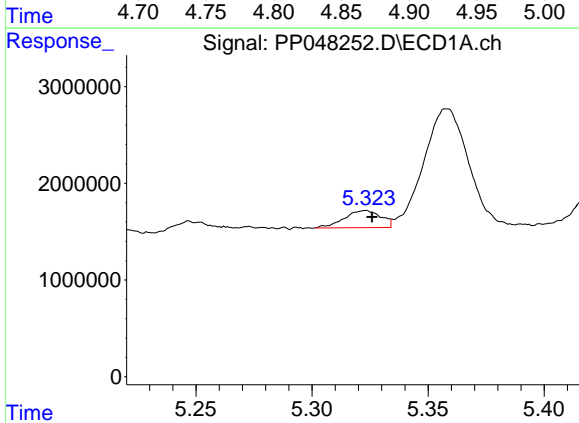
R.T.: 5.623 min
 Delta R.T.: -0.003 min
 Response: 52254456
 Conc: 3198.47 ng/ml

Instrument :
 ECD_P
 ClientSampleId :



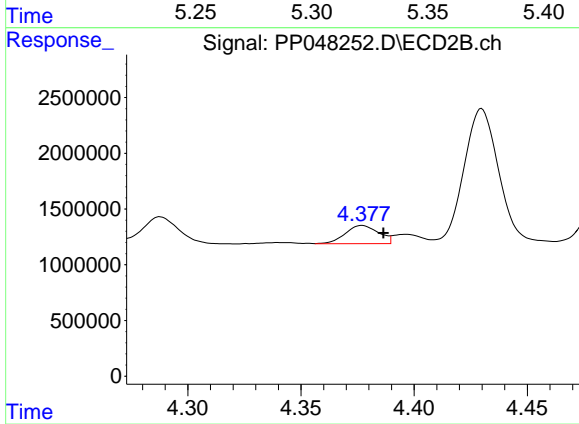
#15 AR-1232-5

R.T.: 4.860 min
 Delta R.T.: -0.009 min
 Response: 1382005
 Conc: 70.55 ng/ml



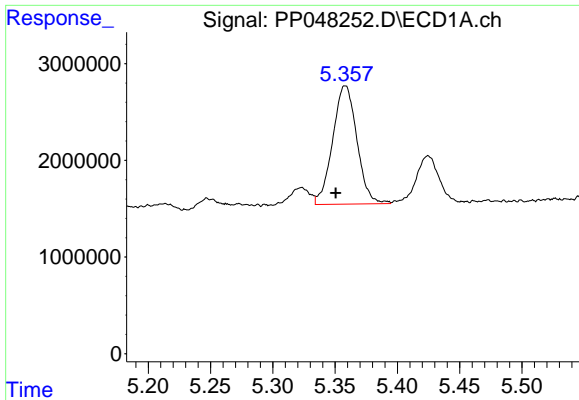
#16 AR-1242-1

R.T.: 5.323 min
 Delta R.T.: -0.003 min
 Response: 1944618
 Conc: 34.77 ng/ml



#16 AR-1242-1

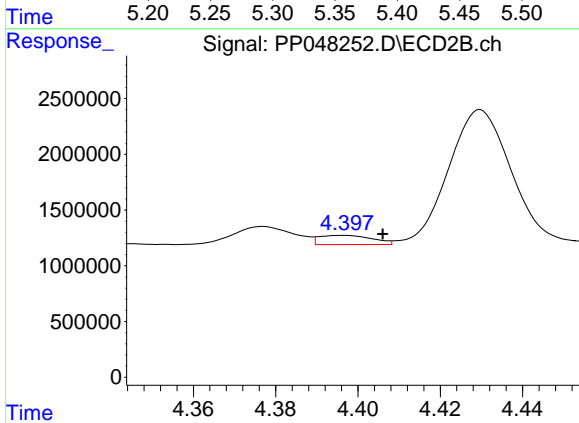
R.T.: 4.377 min
 Delta R.T.: -0.009 min
 Response: 1671320
 Conc: 35.05 ng/ml



#17 AR-1242-2

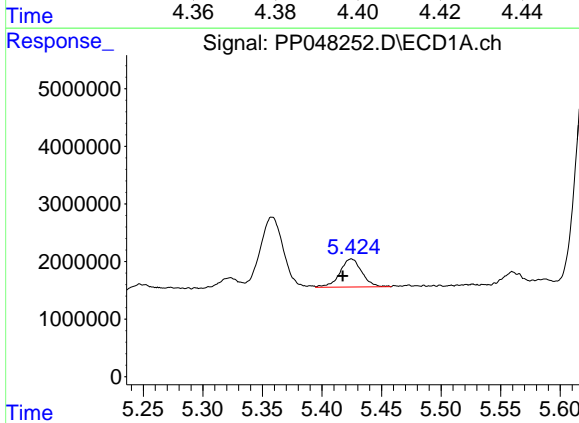
R.T.: 5.358 min
 Delta R.T.: 0.008 min
 Response: 16574238
 Conc: 201.52 ng/ml

Instrument :
 ECD_P
 ClientSampleId :



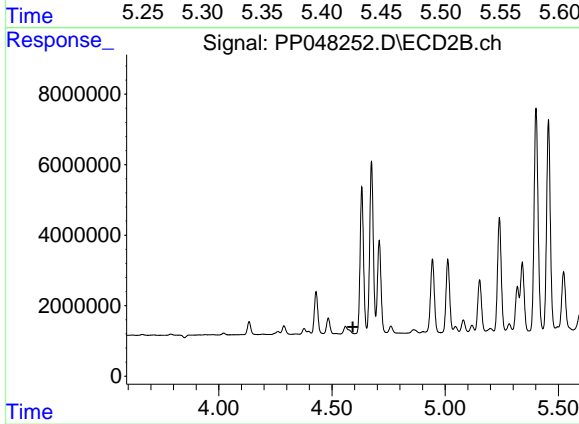
#17 AR-1242-2

R.T.: 4.397 min
 Delta R.T.: -0.009 min
 Response: 738556
 Conc: 11.12 ng/ml



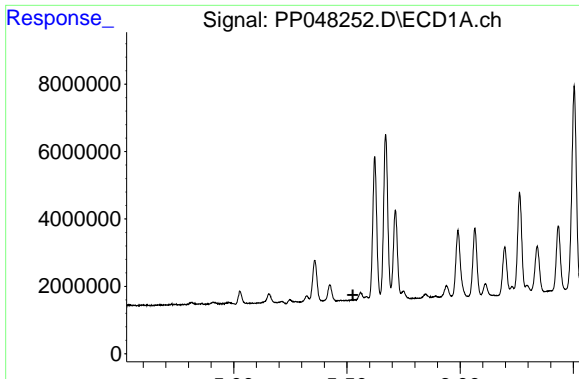
#18 AR-1242-3

R.T.: 5.425 min
 Delta R.T.: 0.007 min
 Response: 6240628
 Conc: 127.13 ng/ml



#18 AR-1242-3

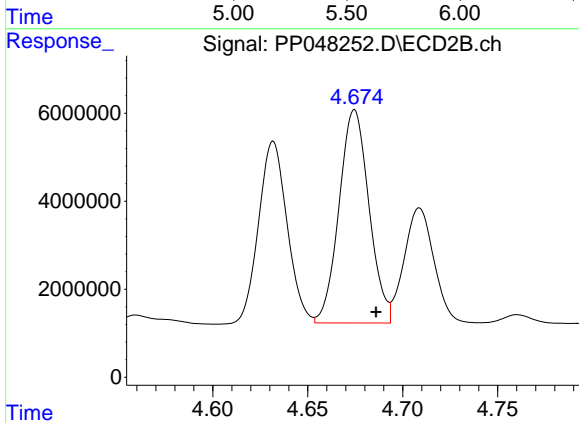
R.T.: 0.000 min
 Exp R.T. : 4.593 min
 Response: 0
 Conc: N.D.



#19 AR-1242-4

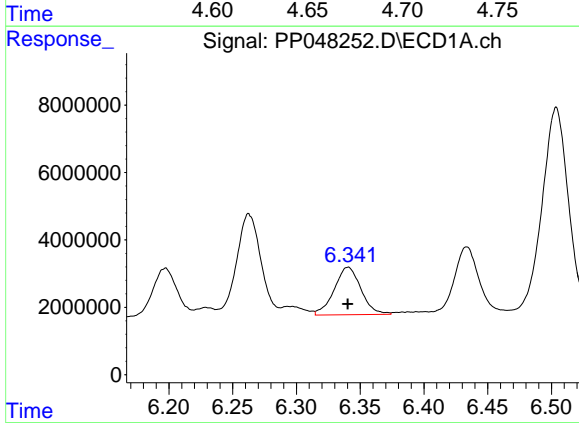
R.T.: 0.000 min
 Exp R.T.: 5.527 min
 Response: 0
 Conc: N.D.

Instrument :
 ECD_P
 ClientSampleId :



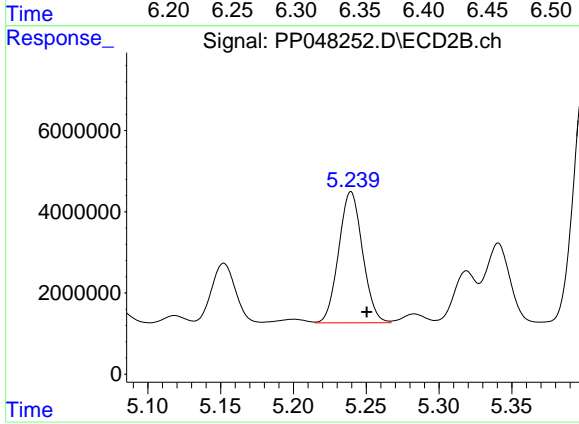
#19 AR-1242-4

R.T.: 4.675 min
 Delta R.T.: -0.011 min
 Response: 53244853
 Conc: 1657.75 ng/ml



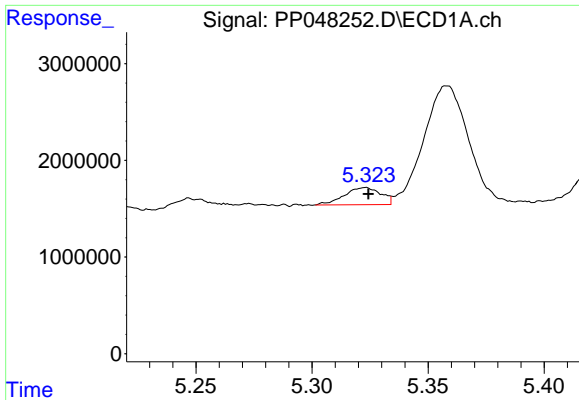
#20 AR-1242-5

R.T.: 6.340 min
 Delta R.T.: 0.000 min
 Response: 20600590
 Conc: 483.70 ng/ml



#20 AR-1242-5

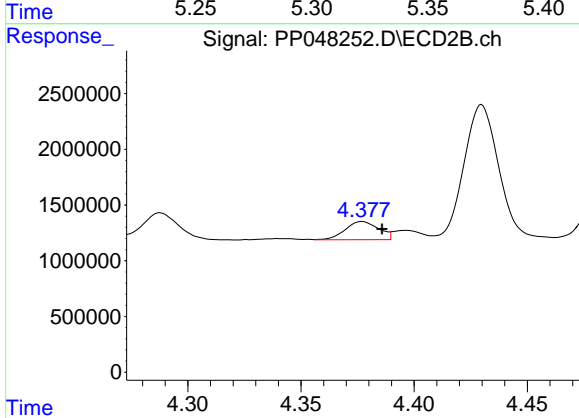
R.T.: 5.240 min
 Delta R.T.: -0.011 min
 Response: 36783336
 Conc: 880.78 ng/ml



#21 AR-1248-1

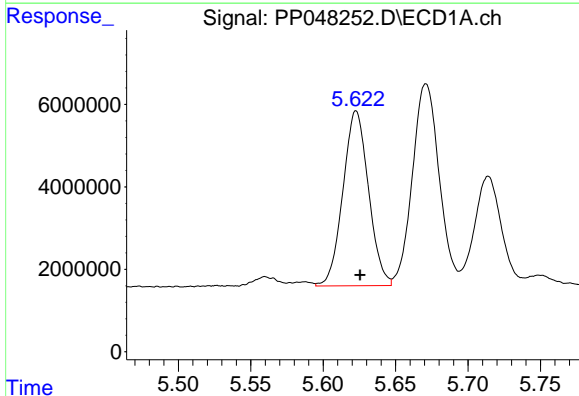
R.T.: 5.323 min
 Delta R.T.: -0.002 min
 Response: 1944618
 Conc: 45.08 ng/ml

Instrument :
 ECD_P
 ClientSampleId :



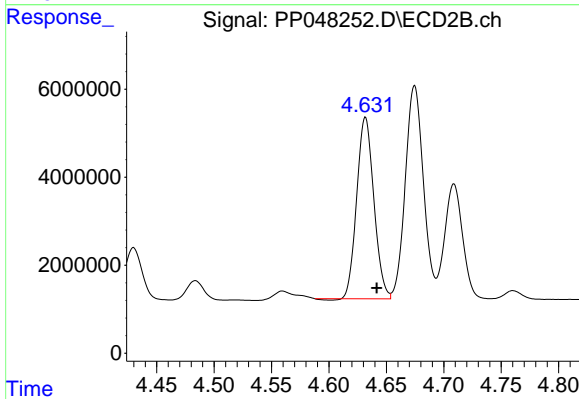
#21 AR-1248-1

R.T.: 4.377 min
 Delta R.T.: -0.009 min
 Response: 1671320
 Conc: 45.66 ng/ml



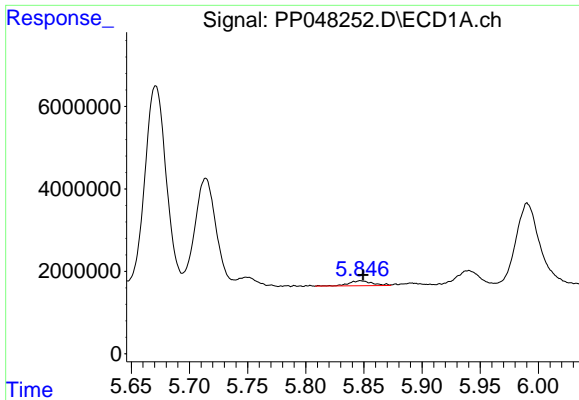
#22 AR-1248-2

R.T.: 5.623 min
 Delta R.T.: -0.003 min
 Response: 52254456
 Conc: 913.72 ng/ml



#22 AR-1248-2

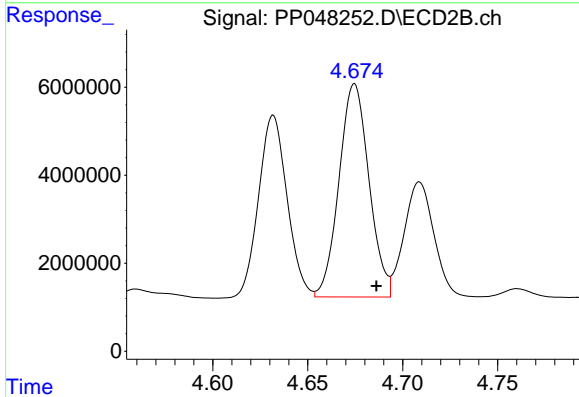
R.T.: 4.632 min
 Delta R.T.: -0.010 min
 Response: 42737142
 Conc: 897.40 ng/ml



#23 AR-1248-3

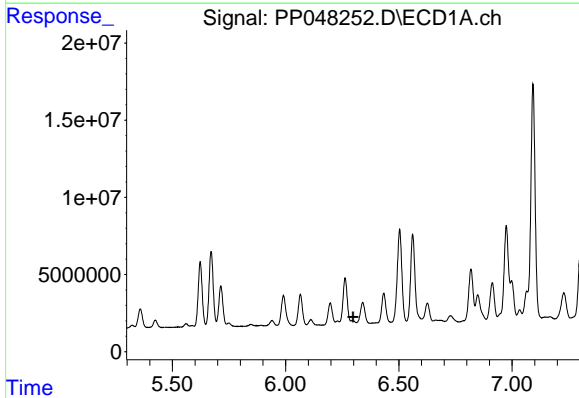
R.T.: 5.847 min
 Delta R.T.: -0.002 min
 Response: 1740851
 Conc: 25.72 ng/ml

Instrument :
 ECD_P
 ClientSampleId :



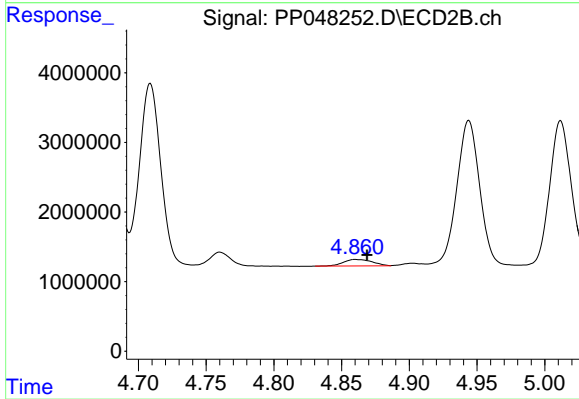
#23 AR-1248-3

R.T.: 4.675 min
 Delta R.T.: -0.011 min
 Response: 53244853
 Conc: 1074.77 ng/ml



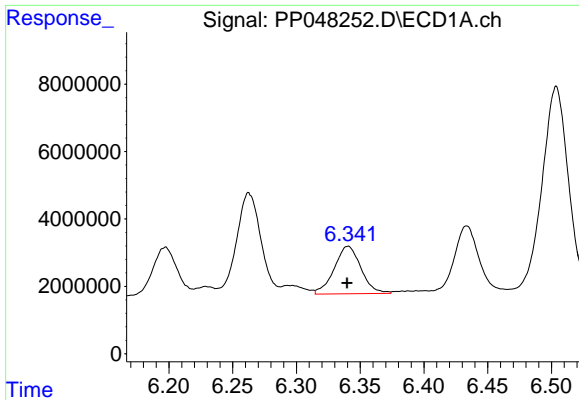
#24 AR-1248-4

R.T.: 0.000 min
 Exp R.T. : 6.298 min
 Response: 0
 Conc: N.D.



#24 AR-1248-4

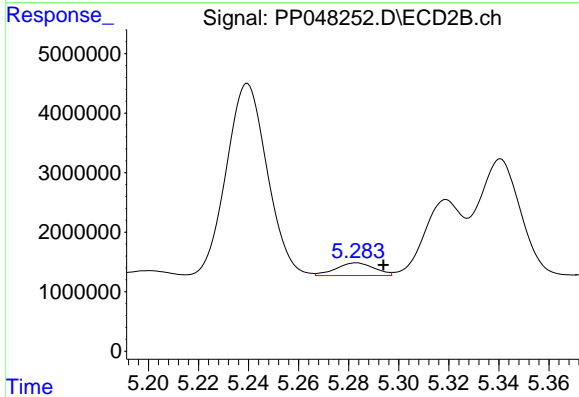
R.T.: 4.860 min
 Delta R.T.: -0.008 min
 Response: 1382005
 Conc: 23.72 ng/ml



#25 AR-1248-5

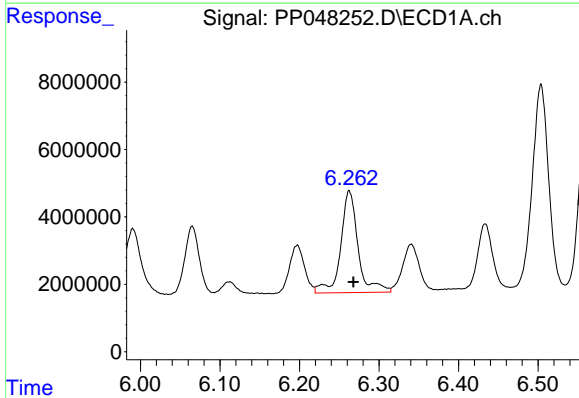
R.T.: 6.340 min
 Delta R.T.: 0.000 min
 Response: 20600590
 Conc: 270.82 ng/ml

Instrument :
 ECD_P
 ClientSampleId :



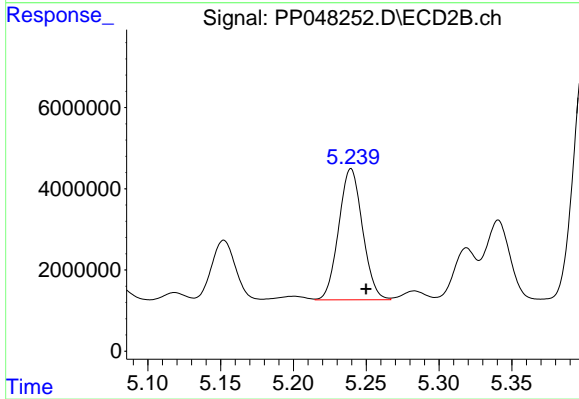
#25 AR-1248-5

R.T.: 5.283 min
 Delta R.T.: -0.011 min
 Response: 2272928
 Conc: 37.68 ng/ml



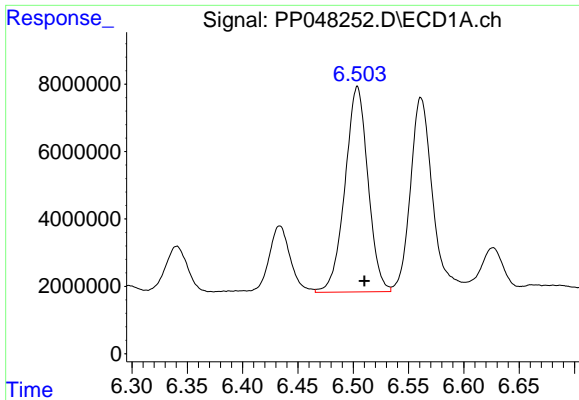
#26 AR-1254-1

R.T.: 6.263 min
 Delta R.T.: -0.005 min
 Response: 45888437
 Conc: 632.11 ng/ml



#26 AR-1254-1

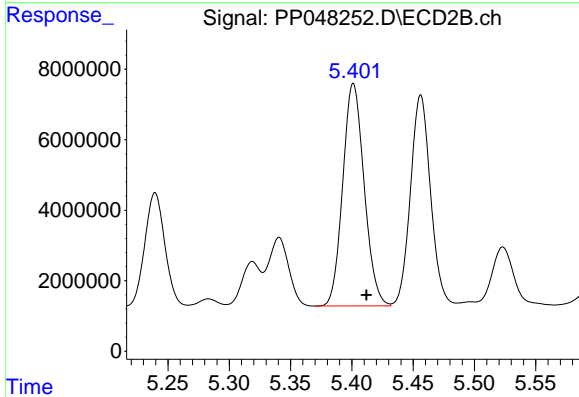
R.T.: 5.240 min
 Delta R.T.: -0.010 min
 Response: 36783336
 Conc: 419.59 ng/ml



#27 AR-1254-2

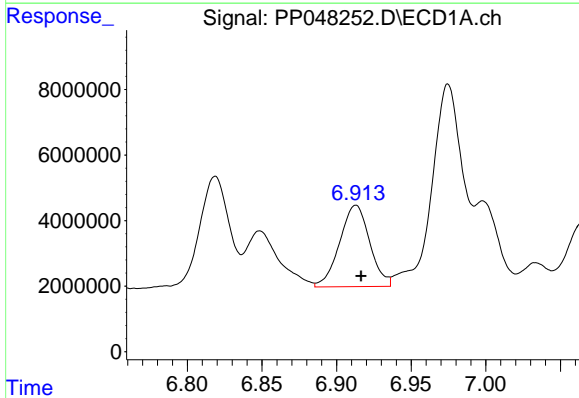
R.T.: 6.504 min
 Delta R.T.: -0.007 min
 Response: 88036412
 Conc: 739.88 ng/ml

Instrument :
 ECD_P
 ClientSampleId :



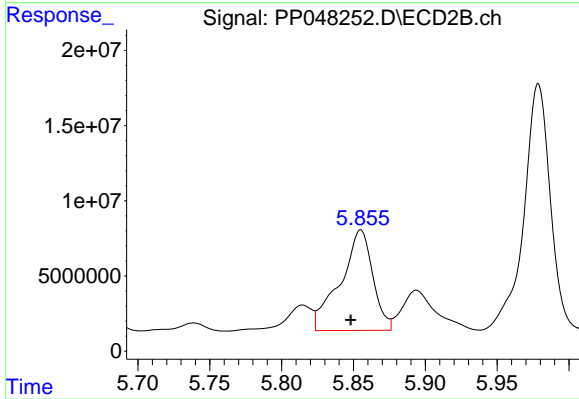
#27 AR-1254-2

R.T.: 5.401 min
 Delta R.T.: -0.011 min
 Response: 76649943
 Conc: 1020.15 ng/ml



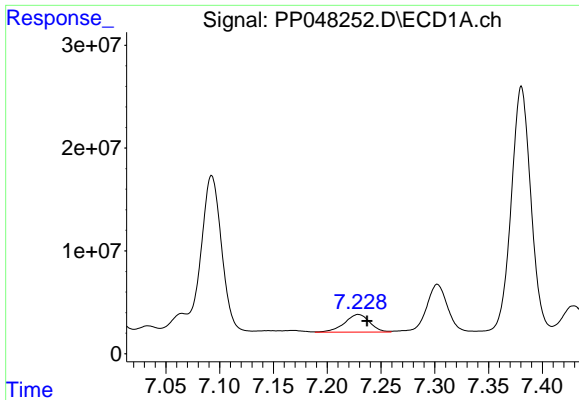
#28 AR-1254-3

R.T.: 6.913 min
 Delta R.T.: -0.004 min
 Response: 34907065
 Conc: 293.85 ng/ml



#28 AR-1254-3

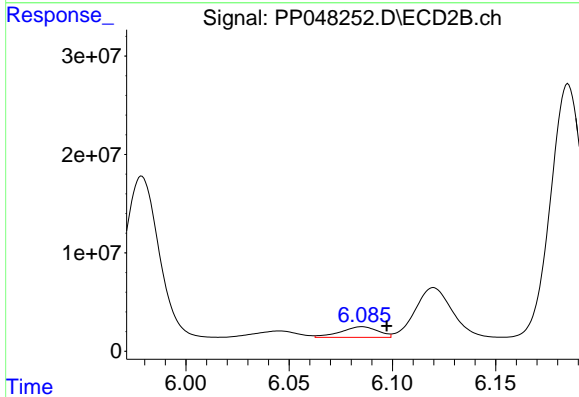
R.T.: 5.855 min
 Delta R.T.: 0.007 min
 Response: 105148135
 Conc: 856.99 ng/ml



#29 AR-1254-4

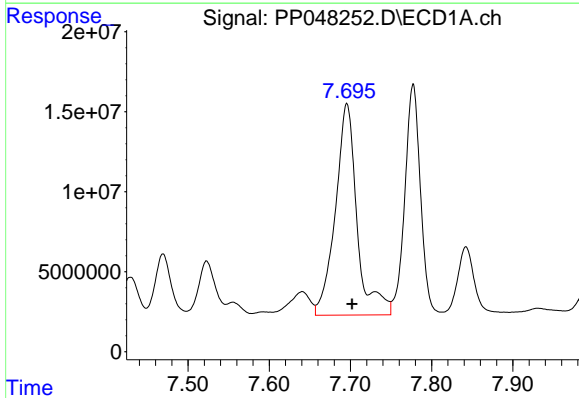
R.T.: 7.229 min
 Delta R.T.: -0.008 min
 Response: 28108014
 Conc: 311.62 ng/ml

Instrument :
 ECD_P
 ClientSampleId :



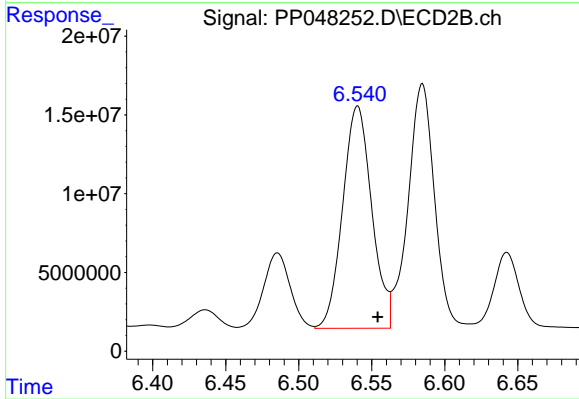
#29 AR-1254-4

R.T.: 6.085 min
 Delta R.T.: -0.012 min
 Response: 13379479
 Conc: 178.18 ng/ml



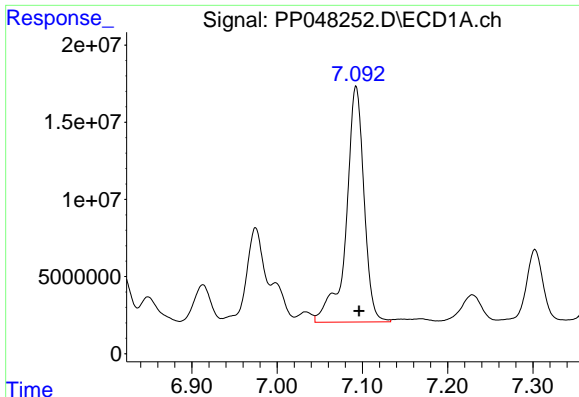
#30 AR-1254-5

R.T.: 7.696 min
 Delta R.T.: -0.007 min
 Response: 245160460
 Conc: 2645.67 ng/ml



#30 AR-1254-5

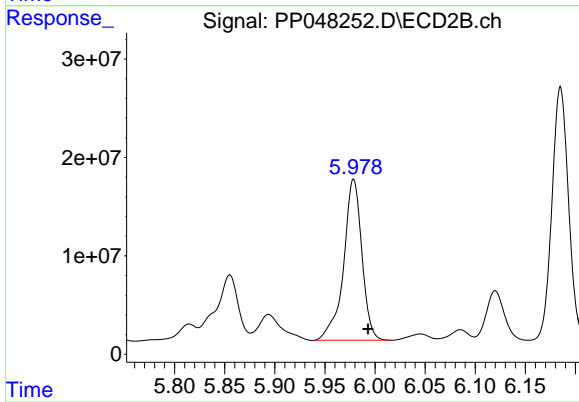
R.T.: 6.540 min
 Delta R.T.: -0.014 min
 Response: 195536188
 Conc: 1931.47 ng/ml



#31 AR-1260-1

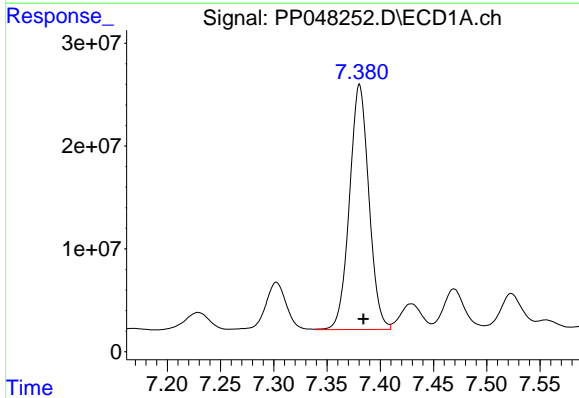
R.T.: 7.093 min
 Delta R.T.: -0.003 min
 Response: 222620497
 Conc: 2385.14 ng/ml

Instrument :
 ECD_P
 ClientSampleId :



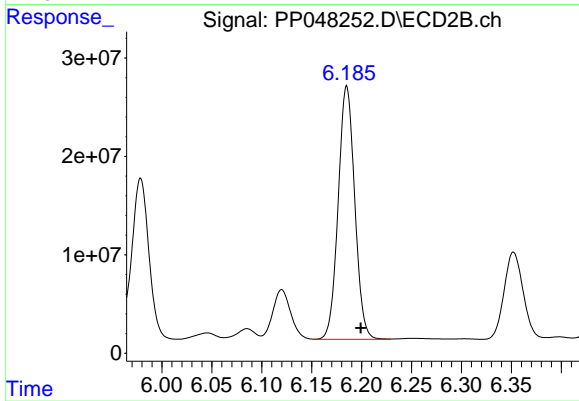
#31 AR-1260-1

R.T.: 5.979 min
 Delta R.T.: -0.014 min
 Response: 208147743
 Conc: 2431.53 ng/ml



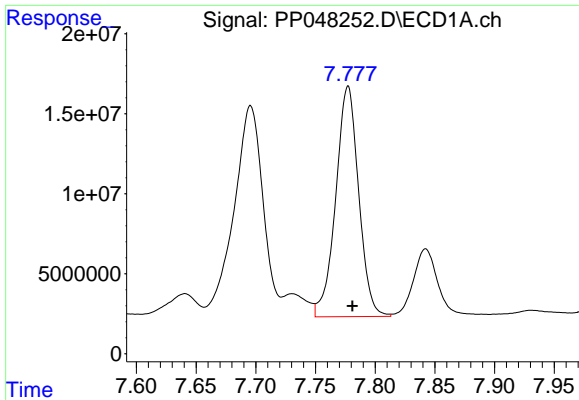
#32 AR-1260-2

R.T.: 7.381 min
 Delta R.T.: -0.004 min
 Response: 302035497
 Conc: 2701.91 ng/ml



#32 AR-1260-2

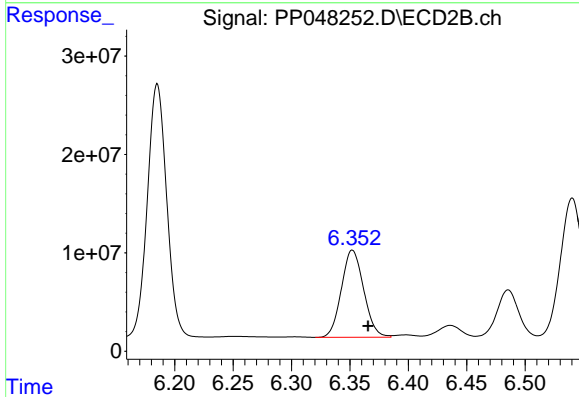
R.T.: 6.185 min
 Delta R.T.: -0.014 min
 Response: 296946047
 Conc: 2880.80 ng/ml



#33 AR-1260-3

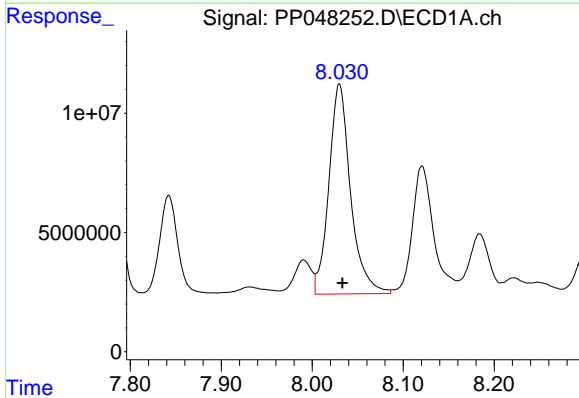
R.T.: 7.777 min
 Delta R.T.: -0.004 min
 Response: 192732289
 Conc: 2250.05 ng/m

Instrument :
 ECD_P
 ClientSampleId :



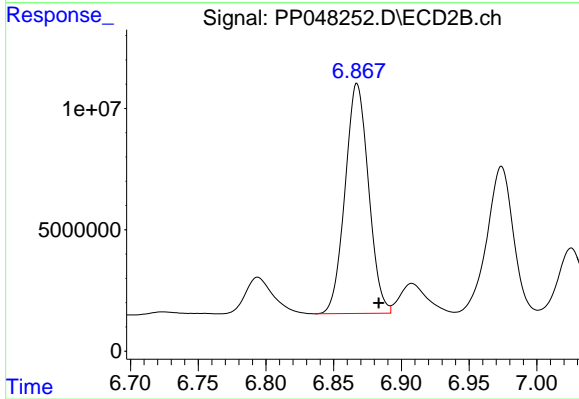
#33 AR-1260-3

R.T.: 6.352 min
 Delta R.T.: -0.013 min
 Response: 117731463
 Conc: 1188.94 ng/ml



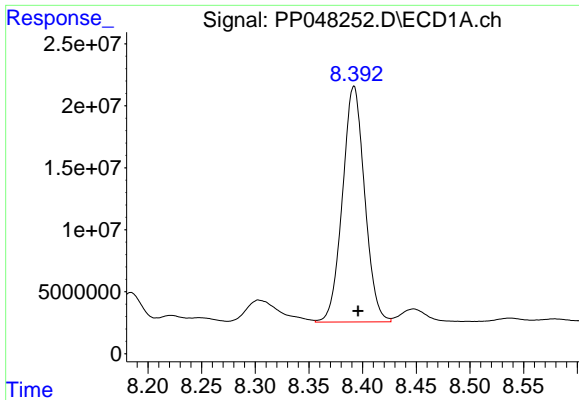
#34 AR-1260-4

R.T.: 8.030 min
 Delta R.T.: -0.003 min
 Response: 145932098
 Conc: 1406.48 ng/ml



#34 AR-1260-4

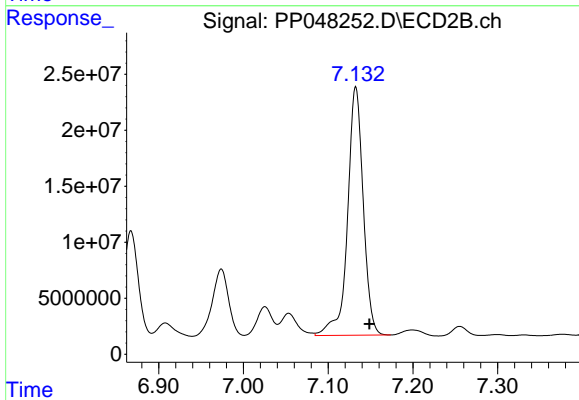
R.T.: 6.867 min
 Delta R.T.: -0.016 min
 Response: 114319788
 Conc: 1373.20 ng/ml



#35 AR-1260-5

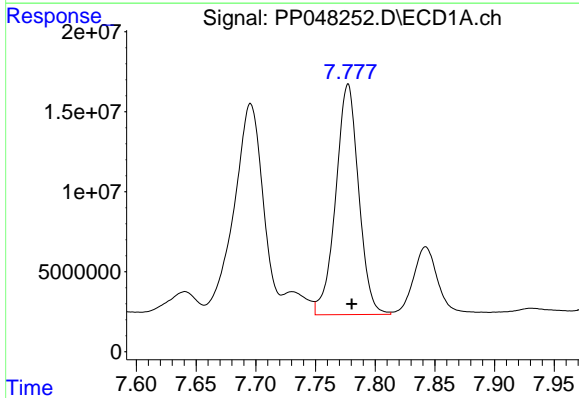
R.T.: 8.392 min
 Delta R.T.: -0.004 min
 Response: 273721065
 Conc: 1326.44 ng/ml

Instrument :
 ECD_P
 ClientSampleId :



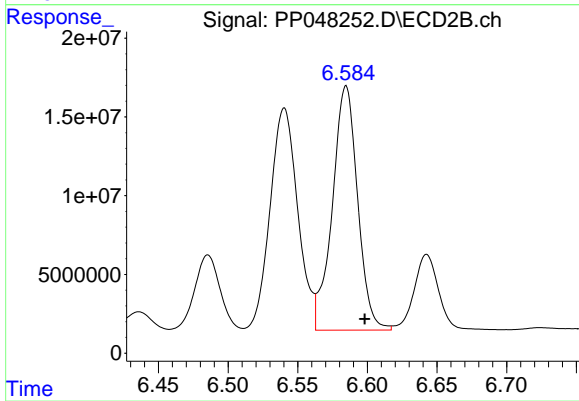
#35 AR-1260-5

R.T.: 7.133 min
 Delta R.T.: -0.016 min
 Response: 284859044
 Conc: 1435.69 ng/ml



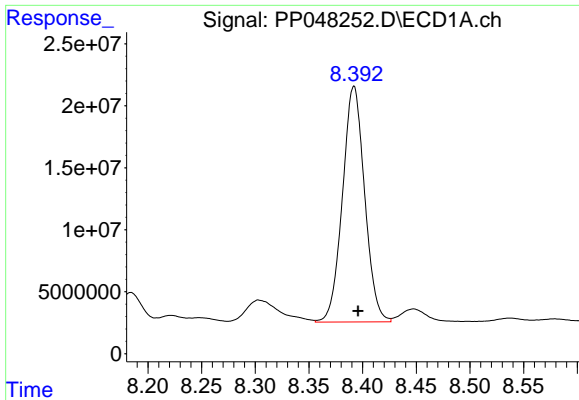
#36 AR-1262-1

R.T.: 7.777 min
 Delta R.T.: -0.003 min
 Response: 192732289
 Conc: 1689.90 ng/ml



#36 AR-1262-1

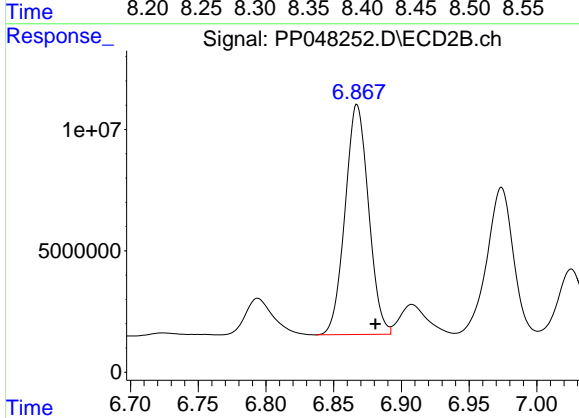
R.T.: 6.585 min
 Delta R.T.: -0.014 min
 Response: 195825670
 Conc: 1812.49 ng/ml



#37 AR-1262-2

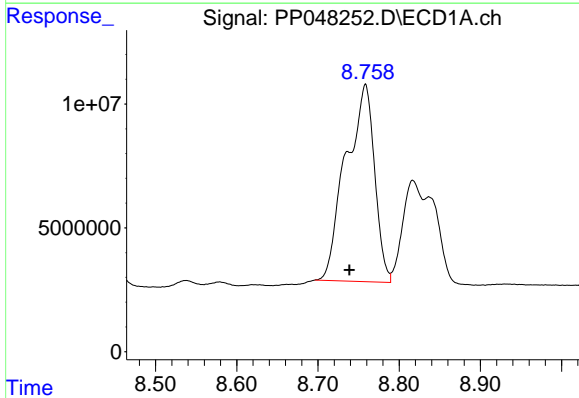
R.T.: 8.392 min
 Delta R.T.: -0.004 min
 Response: 273721065
 Conc: 1284.18 ng/ml

Instrument :
 ECD_P
 ClientSampleId :



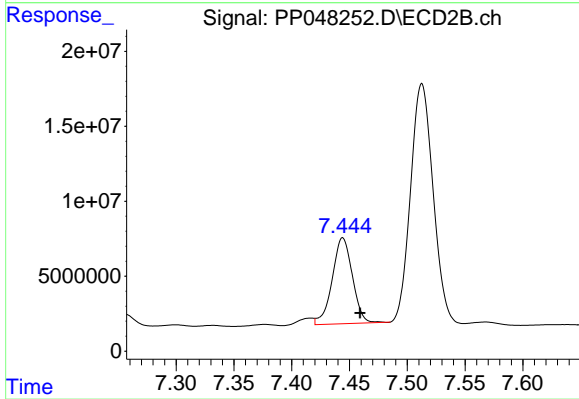
#37 AR-1262-2

R.T.: 6.867 min
 Delta R.T.: -0.014 min
 Response: 114319788
 Conc: 1155.16 ng/ml



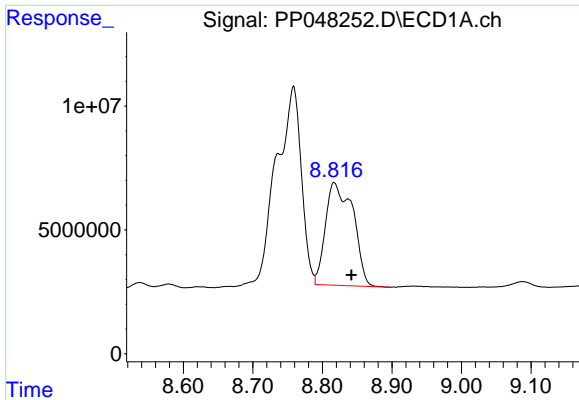
#38 AR-1262-3

R.T.: 8.758 min
 Delta R.T.: 0.019 min
 Response: 195198465
 Conc: 2094.55 ng/ml



#38 AR-1262-3

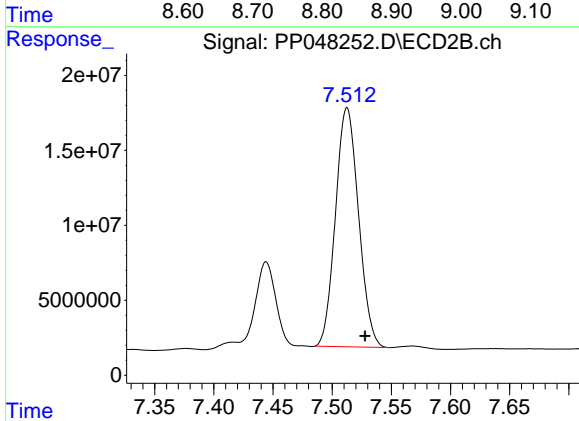
R.T.: 7.444 min
 Delta R.T.: -0.015 min
 Response: 69619316
 Conc: 925.12 ng/ml



#39 AR-1262-4

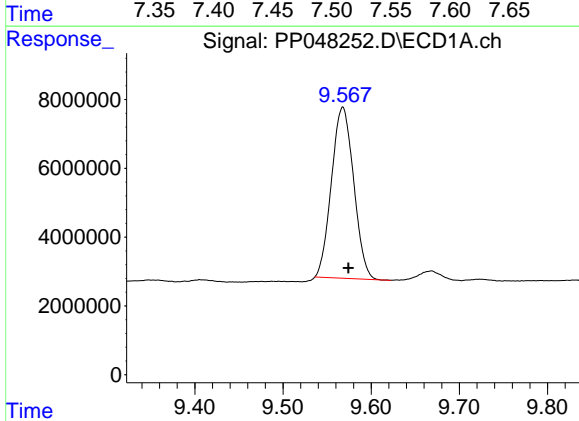
R.T.: 8.817 min
 Delta R.T.: -0.024 min
 Response: 114001655
 Conc: 1917.33 ng/ml

Instrument :
 ECD_P
 ClientSampleId :



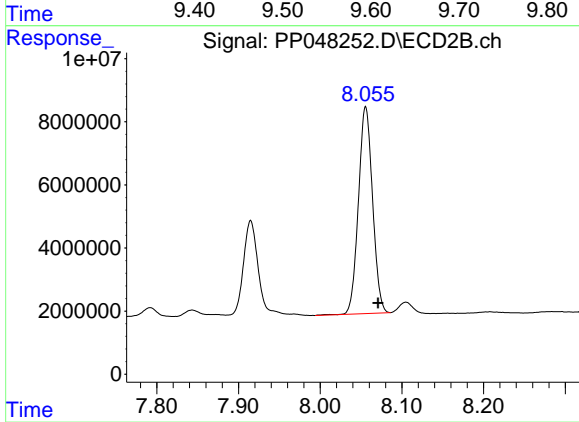
#39 AR-1262-4

R.T.: 7.513 min
 Delta R.T.: -0.015 min
 Response: 216535309
 Conc: 1486.72 ng/ml



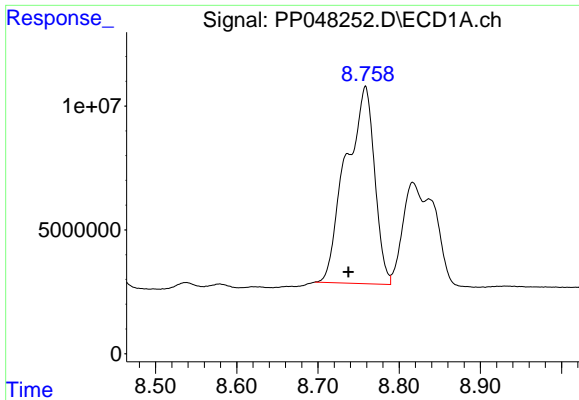
#40 AR-1262-5

R.T.: 9.568 min
 Delta R.T.: -0.007 min
 Response: 87096039
 Conc: 1100.43 ng/ml



#40 AR-1262-5

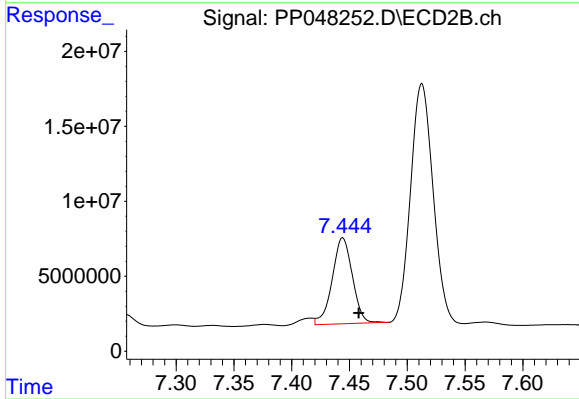
R.T.: 8.056 min
 Delta R.T.: -0.015 min
 Response: 78689114
 Conc: 1165.89 ng/ml



#41 AR-1268-1

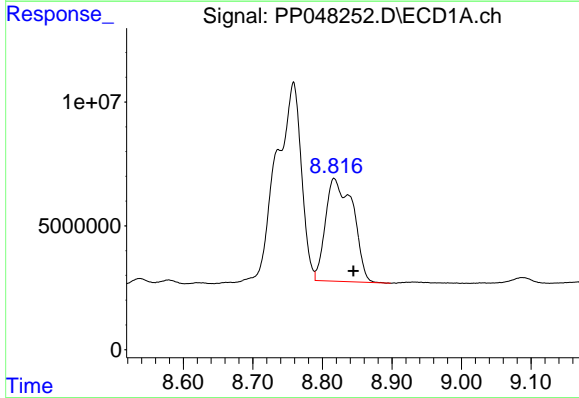
R.T.: 8.758 min
 Delta R.T.: 0.021 min
 Response: 195198465
 Conc: 737.89 ng/ml

Instrument :
 ECD_P
 ClientSampleId :



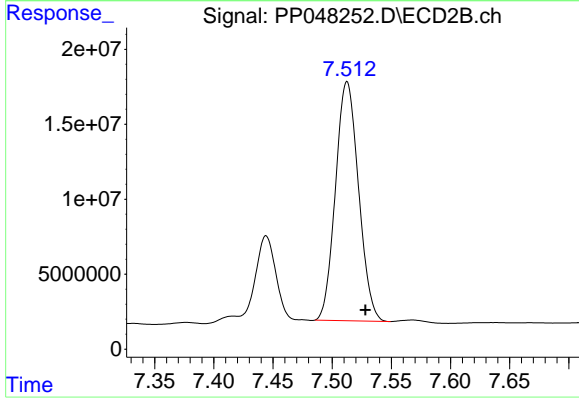
#41 AR-1268-1

R.T.: 7.444 min
 Delta R.T.: -0.014 min
 Response: 69619316
 Conc: 298.10 ng/ml



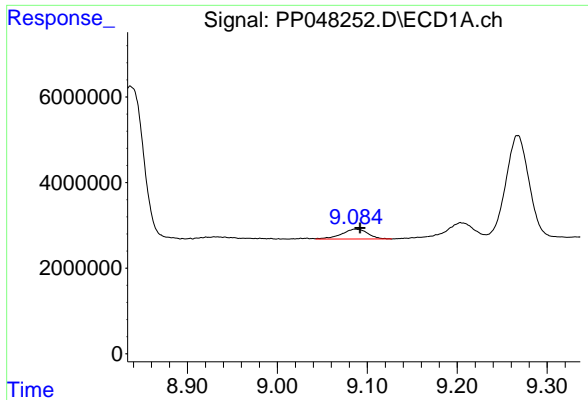
#42 AR-1268-2

R.T.: 8.817 min
 Delta R.T.: -0.028 min
 Response: 114001655
 Conc: 472.07 ng/ml



#42 AR-1268-2

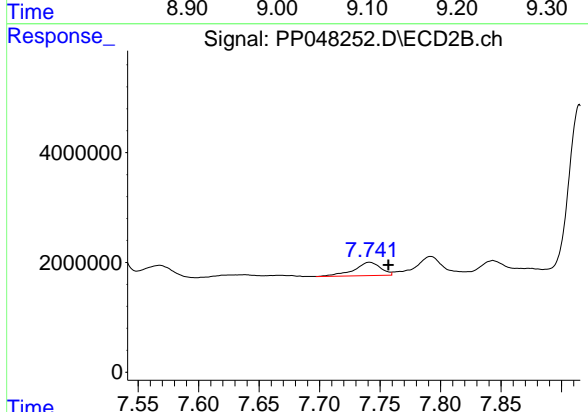
R.T.: 7.513 min
 Delta R.T.: -0.016 min
 Response: 216535309
 Conc: 1000.79 ng/ml



#43 AR-1268-3

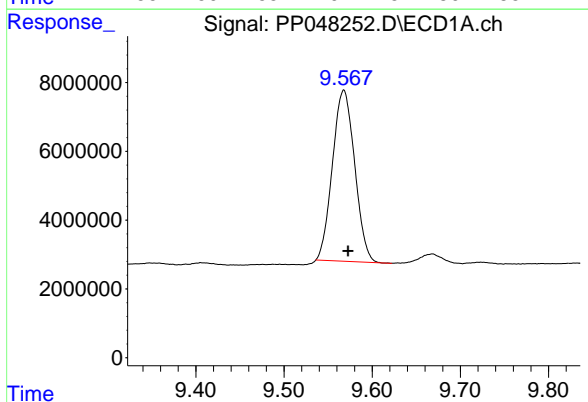
R.T.: 9.088 min
 Delta R.T.: -0.004 min
 Response: 4690507
 Conc: 22.82 ng/ml

Instrument :
 ECD_P
 ClientSampleId :



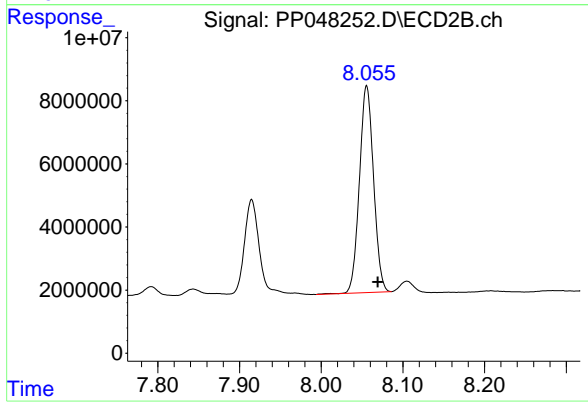
#43 AR-1268-3

R.T.: 7.741 min
 Delta R.T.: -0.016 min
 Response: 3704957
 Conc: 19.93 ng/ml



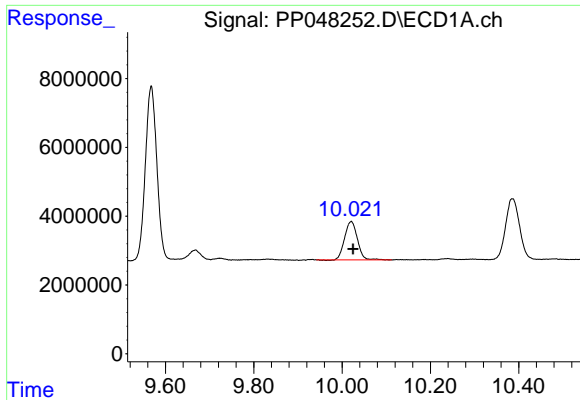
#44 AR-1268-4

R.T.: 9.568 min
 Delta R.T.: -0.005 min
 Response: 87096039
 Conc: 969.57 ng/ml



#44 AR-1268-4

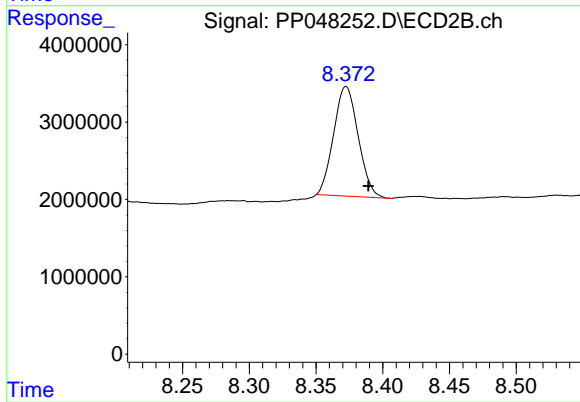
R.T.: 8.056 min
 Delta R.T.: -0.014 min
 Response: 78689114
 Conc: 957.87 ng/ml



#45 AR-1268-5

R.T.: 10.020 min
Delta R.T.: -0.005 min
Response: 22356925
Conc: 31.66 ng/ml

Instrument :
ECD_P
ClientSampleId :



#45 AR-1268-5

R.T.: 8.373 min
Delta R.T.: -0.017 min
Response: 18147628
Conc: 29.95 ng/ml