

Data Path : Z:\pestpcbsrv\HPCHEM1\ECD\_P\Data\PP060122\  
 Data File : PP048284.D  
 Signal(s) : Signal #1: ECD1A.ch Signal #2: ECD2B.ch  
 Acq On : 01 Jun 2022 10:38  
 Operator : YP\AJ  
 Sample : N3109-07  
 Misc :  
 ALS Vial : 67 Sample Multiplier: 1

Instrument :  
 ECD\_P  
 ClientSampleId :  
 BB-11

Integration File signal 1: autoint1.e  
 Integration File signal 2: autoint2.e  
 Quant Time: Jun 02 03:59:36 2022  
 Quant Method : Z:\pestpcbsrv\HPCHEM1\ECD\_P\methods\PP052722.M  
 Quant Title : GC EXTRACTABLES  
 QLast Update : Fri May 27 23:53:39 2022  
 Response via : Initial Calibration  
 Integrator: ChemStation

Volume Inj. : 2 µl  
 Signal #1 Phase : ZB-MR1 Signal #2 Phase: ZB-MR2  
 Signal #1 Info : 30Mx0.32mmx 0.50µ Signal #2 Info : 30M x 0.32mm x 0.25µm

Compound	RT#1	RT#2	Resp#1	Resp#2	ng/ml	ng/ml
-----						
System Monitoring Compounds						
1) SA Tetrachlo...	4.035	3.215	53566979	43264975	22.875	21.953
2) SA Decachlor...	10.386	8.646	39636866	32578877	20.393	20.154

Target Compounds

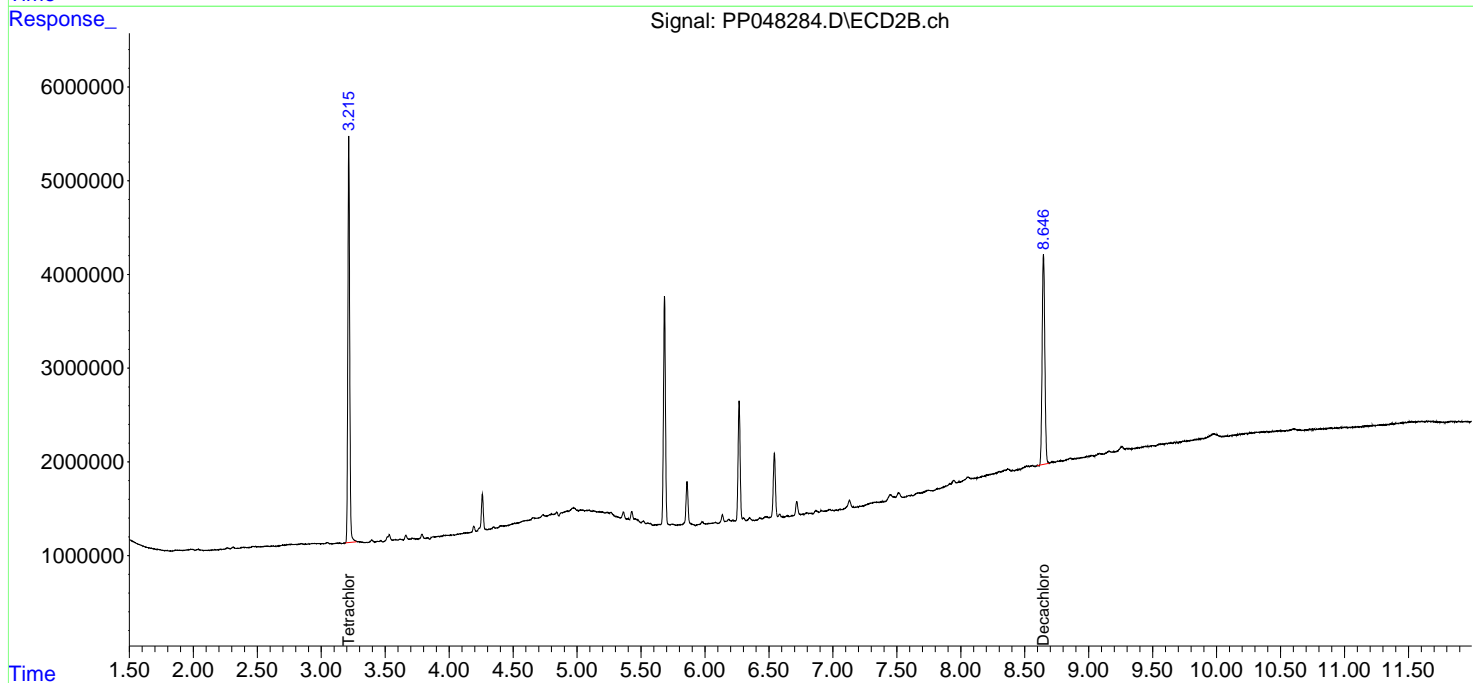
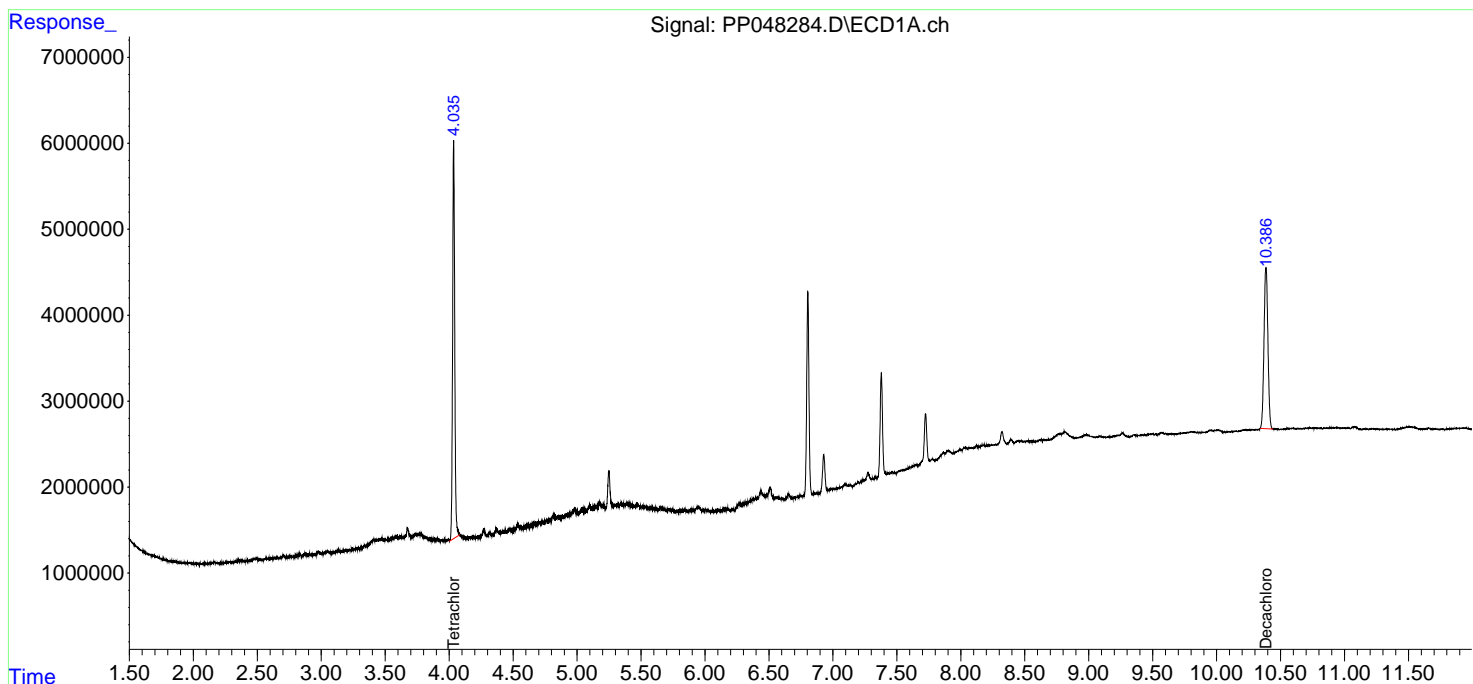
-----  
 (f)=RT Delta > 1/2 Window (#)=Amounts differ by > 25% (m)=manual int.

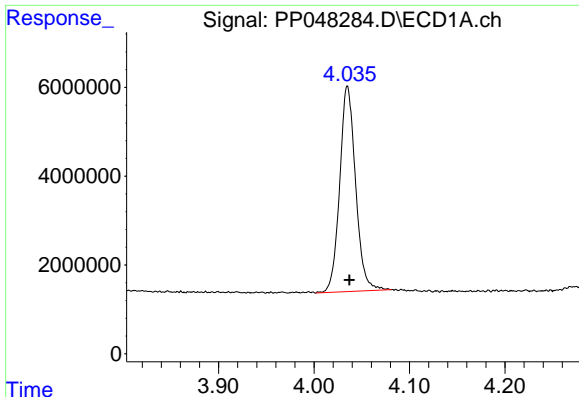
Data Path : Z:\pestpcbsrv\HPCHEM1\ECD\_P\Data\PP060122\  
 Data File : PP048284.D  
 Signal(s) : Signal #1: ECD1A.ch Signal #2: ECD2B.ch  
 Acq On : 01 Jun 2022 10:38  
 Operator : YP\AJ  
 Sample : N3109-07  
 Misc :  
 ALS Vial : 67 Sample Multiplier: 1

Instrument :  
 ECD\_P  
 ClientSampleId :  
 BB-11

Integration File signal 1: autoint1.e  
 Integration File signal 2: autoint2.e  
 Quant Time: Jun 02 03:59:36 2022  
 Quant Method : Z:\pestpcbsrv\HPCHEM1\ECD\_P\methods\PP052722.M  
 Quant Title : GC EXTRACTABLES  
 QLast Update : Fri May 27 23:53:39 2022  
 Response via : Initial Calibration  
 Integrator: ChemStation

Volume Inj. : 2 µl  
 Signal #1 Phase : ZB-MR1 Signal #2 Phase: ZB-MR2  
 Signal #1 Info : 30Mx0.32mmx 0.50µ Signal #2 Info : 30M x 0.32mm x 0.25µm

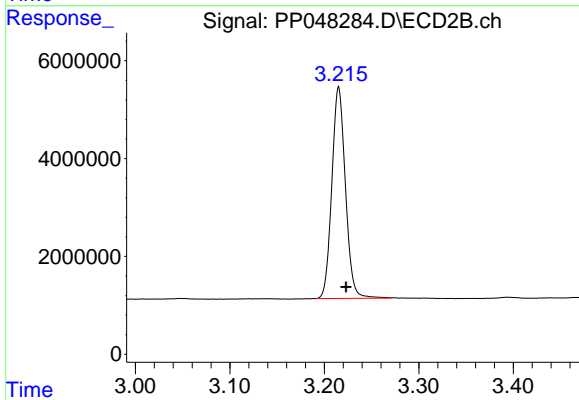




#1 Tetrachloro-m-xylene

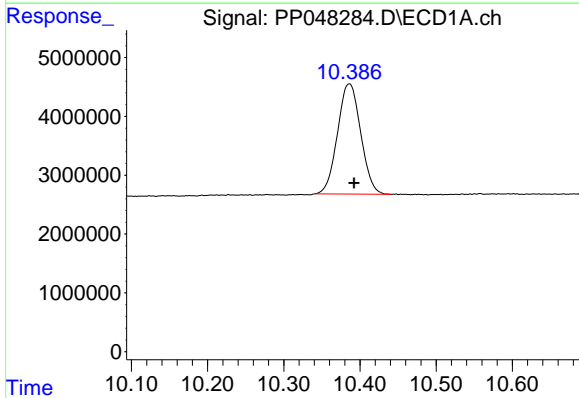
R.T.: 4.035 min  
 Delta R.T.: -0.002 min  
 Response: 53566979  
 Conc: 22.87 ng/ml

Instrument :  
 ECD\_P  
 ClientSampleId :  
 BB-11



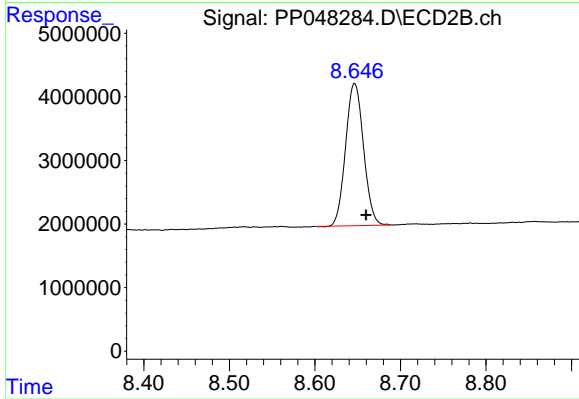
#1 Tetrachloro-m-xylene

R.T.: 3.215 min  
 Delta R.T.: -0.008 min  
 Response: 43264975  
 Conc: 21.95 ng/ml



#2 Decachlorobiphenyl

R.T.: 10.386 min  
 Delta R.T.: -0.006 min  
 Response: 39636866  
 Conc: 20.39 ng/ml



#2 Decachlorobiphenyl

R.T.: 8.646 min  
 Delta R.T.: -0.014 min  
 Response: 32578877  
 Conc: 20.15 ng/ml