

Data Path : Z:\pestpcbsrv\HPCHEM1\ECD\_P\Data\PP060223\  
 Data File : PP058187.D  
 Signal(s) : Signal #1: ECD1A.ch Signal #2: ECD2B.ch  
 Acq On : 02 Jun 2023 13:06  
 Operator : YP\AJ  
 Sample : AR1242CCC500  
 Misc :  
 ALS Vial : 4 Sample Multiplier: 1

Instrument :  
 ECD\_P  
 ClientSampleId :

Integration File signal 1: autoint1.e  
 Integration File signal 2: autoint2.e  
 Quant Time: Jun 03 05:05:44 2023  
 Quant Method : Z:\pestpcbsrv\HPCHEM1\ECD\_P\methods\PP050823.M  
 Quant Title : GC EXTRACTABLES  
 QLast Update : Mon May 08 19:18:05 2023  
 Response via : Initial Calibration  
 Integrator: ChemStation

Volume Inj. : 2 µl  
 Signal #1 Phase : ZB-MR1 Signal #2 Phase: ZB-MR2  
 Signal #1 Info : 30Mx0.32mmx 0.50µ Signal #2 Info : 30M x 0.32mm x 0.25µm

Compound	RT#1	RT#2	Resp#1	Resp#2	ng/ml	ng/ml
-----						
System Monitoring Compounds						
1) SA Tetrachlo...	4.392	3.624	98749148	109.8E6	45.012	48.389
2) SA Decachlor...	10.230	8.688	55242971	67419588	48.748	42.949
Target Compounds						
3) L1 AR-1016-1	5.572	4.719	21774158	26164056	349.532	351.105
4) L1 AR-1016-2	5.594	4.738	31861439	36862473	354.384	356.614
5) L1 AR-1016-3	5.657	4.916	20959777	21049501	370.684	357.038
6) L1 AR-1016-4	5.756	4.959	16734520	17602447	362.358	374.210
7) L1 AR-1016-5	6.055	5.174	18934249	22879185	405.993	385.327
8) L2 AR-1221-1	4.597	3.837	2911448	3244611	100.612	110.030
9) L2 AR-1221-2	4.690	3.925	4543518	5010254	209.635	224.928
10) L2 AR-1221-3	4.766	4.001	14518788	16440956	241.013	258.045
11) L3 AR-1232-1	4.766	4.001	14518788	16440956	331.471	356.257
12) L3 AR-1232-2	5.302	4.738	19472044	36862473	746.665	778.970
13) L3 AR-1232-3	5.594	4.916	31861439	21049501	780.667	773.349
14) L3 AR-1232-4	5.756	5.001	16734520	21281089	785.864	872.943
15) L3 AR-1232-5	5.849	5.174	15422876	22879185	844.495	827.390
16) L4 AR-1242-1	5.572	4.719	21774158	26164056	457.076	449.469
17) L4 AR-1242-2	5.594	4.738	31861439	36862473	465.900	461.830
18) L4 AR-1242-3	5.657	4.916	20959777	21049501	481.387	448.834
19) L4 AR-1242-4	5.756	5.001	16734520	21281089	474.913	458.640
20) L4 AR-1242-5	6.501	5.530	16725593	25476439	516.202	455.671
21) L5 AR-1248-1	5.572	4.719	21774158	26164056	517.411	508.446
22) L5 AR-1248-2	5.849	4.959	15422876	17602447	236.546	245.149
23) L5 AR-1248-3	6.055	5.001	18934249	21281089	272.664	281.277
24) L5 AR-1248-4	6.462	5.174	14994588	22879185	234.617	256.489
25) L5 AR-1248-5	6.501	5.571	16725593	19801179	260.690	238.161
26) L6 AR-1254-1	6.434	5.530	12722655	25476439	189.557	228.162
27) L6 AR-1254-2	6.659	5.678	15961569	9020984	168.730	90.387 #
28) L6 AR-1254-3	7.026	6.087	8740299	11430246	95.954	73.059
29) L6 AR-1254-4	7.315	6.318	4838888	7017517	81.241	76.069
30) L6 AR-1254-5	7.739	6.739	3469293	5002587	50.535	34.558 #
31) L7 AR-1260-1	7.193	6.232	2578551	6629345	32.683	60.297 #
32) L7 AR-1260-2	7.452	6.407	2301120	2604022	28.722	20.489 #
33) L7 AR-1260-3	7.801	6.561	461886	2368388	8.107	19.315 #
34) L7 AR-1260-4	8.029	7.039	1430462	214150	21.529	2.451 #
35) L7 AR-1260-5	8.370	7.280	434445	384744	4.046	2.083 #
36) L8 AR-1262-1	7.801	6.809f	461886	661206	5.364	10.407 #
37) L8 AR-1262-2	8.370	7.039	434445	214150	3.569	1.727 #
38) L8 AR-1262-3	8.697f	7.568	354282	45483	4.075	0.485 #
39) L8 AR-1262-4	8.768	7.630	99615	612121	1.486	3.593 #
40) L8 AR-1262-5	9.441	8.124	30694	300088	0.802	4.077 #
41) L9 AR-1268-1	8.697f	7.568	354282	45483	2.275	0.173 #

Data Path : Z:\pestpcbsrv\HPCHEM1\ECD\_P\Data\PP060223\  
 Data File : PP058187.D  
 Signal(s) : Signal #1: ECD1A.ch Signal #2: ECD2B.ch  
 Acq On : 02 Jun 2023 13:06  
 Operator : YP\AJ  
 Sample : AR1242CCC500  
 Misc :  
 ALS Vial : 4 Sample Multiplier: 1

Instrument :  
 ECD\_P  
 ClientSampleId :

Integration File signal 1: autoint1.e  
 Integration File signal 2: autoint2.e  
 Quant Time: Jun 03 05:05:44 2023  
 Quant Method : Z:\pestpcbsrv\HPCHEM1\ECD\_P\methods\PP050823.M  
 Quant Title : GC EXTRACTABLES  
 QLast Update : Mon May 08 19:18:05 2023  
 Response via : Initial Calibration  
 Integrator: ChemStation

Volume Inj. : 2 µl  
 Signal #1 Phase : ZB-MR1 Signal #2 Phase: ZB-MR2  
 Signal #1 Info : 30Mx0.32mmx 0.50µ Signal #2 Info : 30M x 0.32mm x 0.25µm

	Compound	RT#1	RT#2	Resp#1	Resp#2	ng/ml	ng/ml
42)	L9 AR-1268-2	8.768	7.630	99615	612121	0.763	2.500 #
43)	L9 AR-1268-3	9.013	7.844	63732	305353	0.494	1.506 #
44)	L9 AR-1268-4	9.441	8.124	30694	300088	0.725	3.623 #
45)	L9 AR-1268-5	9.872	8.427	192685	291322	0.590	0.563

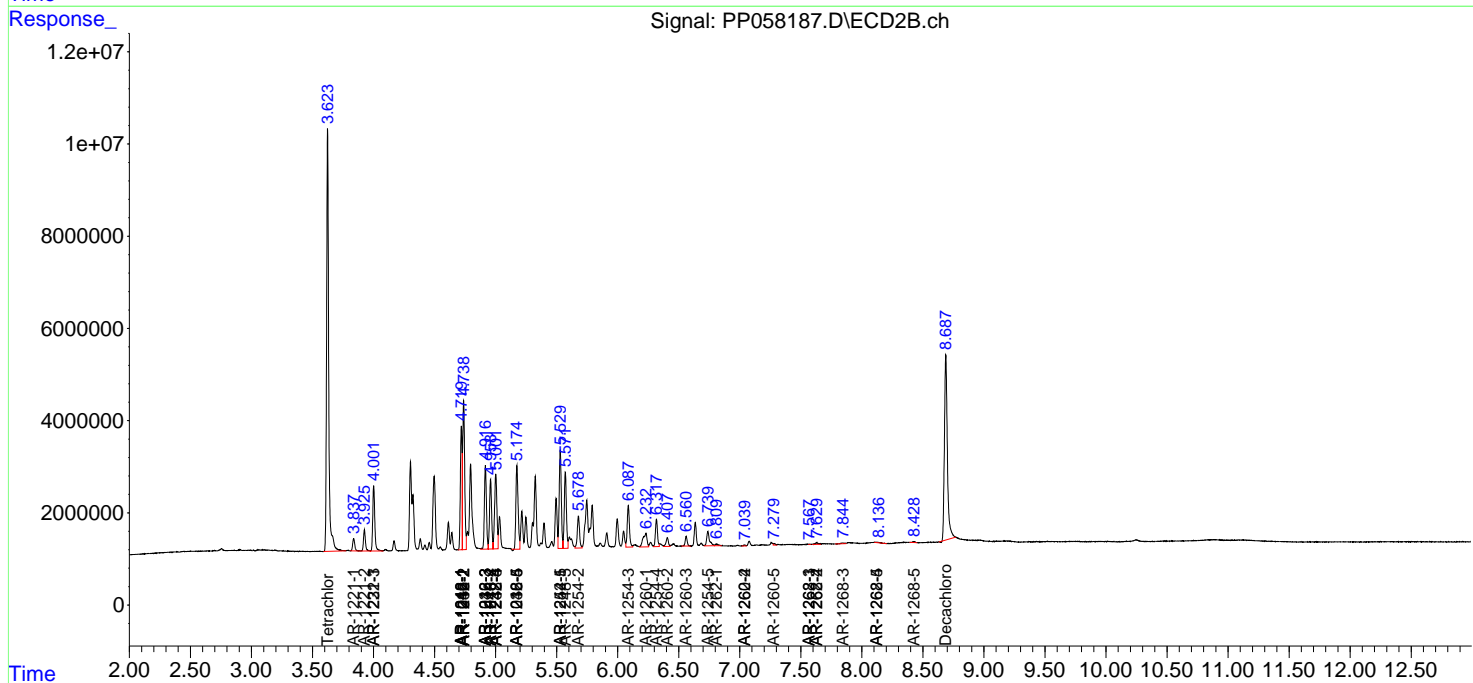
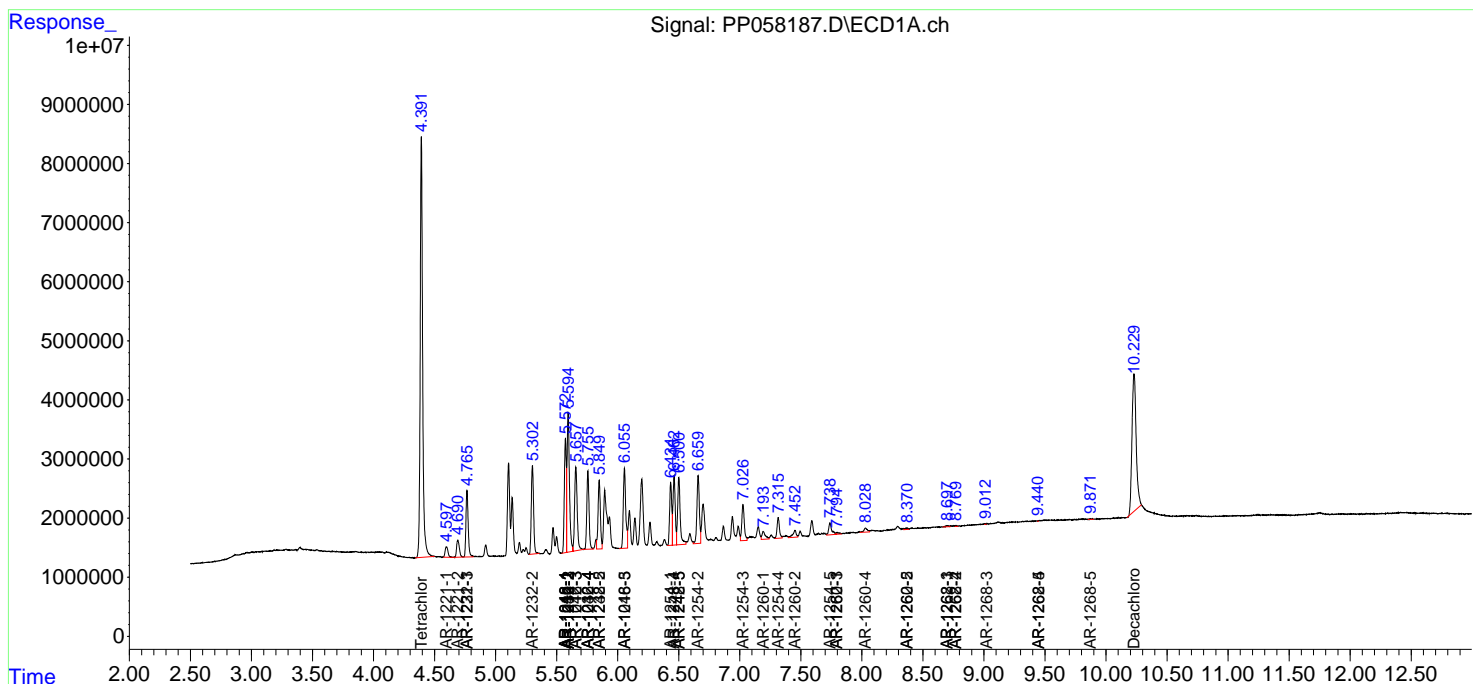
(f)=RT Delta > 1/2 Window (#)=Amounts differ by > 25% (m)=manual int.

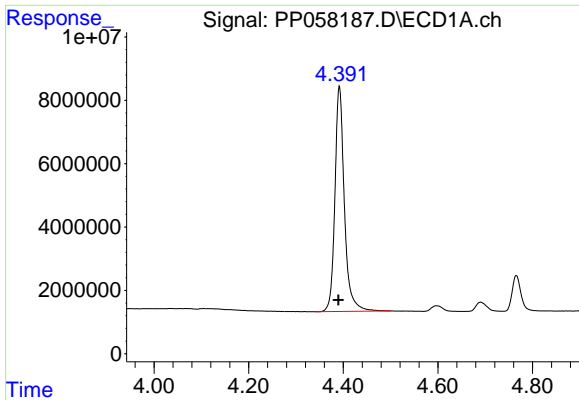
Data Path : Z:\pestpcbsrv\HPCHEM1\ECD\_P\Data\PP060223\  
 Data File : PP058187.D  
 Signal(s) : Signal #1: ECD1A.ch Signal #2: ECD2B.ch  
 Acq On : 02 Jun 2023 13:06  
 Operator : YP\AJ  
 Sample : AR1242CCC500  
 Misc :  
 ALS Vial : 4 Sample Multiplier: 1

Instrument :  
 ECD\_P  
 ClientSampleId :

Integration File signal 1: autoint1.e  
 Integration File signal 2: autoint2.e  
 Quant Time: Jun 03 05:05:44 2023  
 Quant Method : Z:\pestpcbsrv\HPCHEM1\ECD\_P\methods\PP050823.M  
 Quant Title : GC EXTRACTABLES  
 QLast Update : Mon May 08 19:18:05 2023  
 Response via : Initial Calibration  
 Integrator: ChemStation

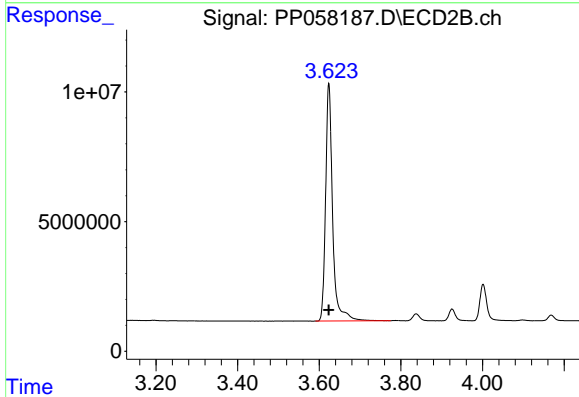
Volume Inj. : 2 µl  
 Signal #1 Phase : ZB-MR1 Signal #2 Phase: ZB-MR2  
 Signal #1 Info : 30Mx0.32mmx 0.50µ Signal #2 Info : 30M x 0.32mm x 0.25µm



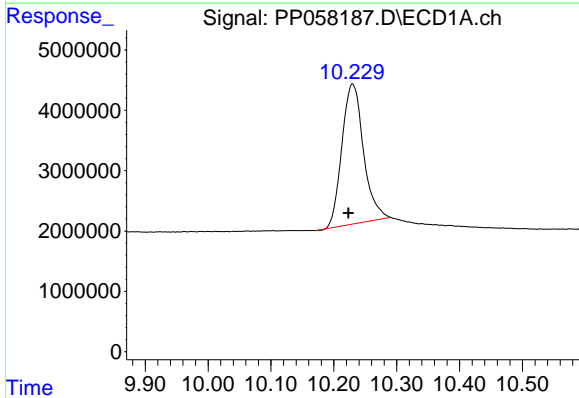


#1 Tetrachloro-m-xylene  
 R.T.: 4.392 min  
 Delta R.T.: 0.002 min  
 Response: 98749148  
 Conc: 45.01 ng/ml

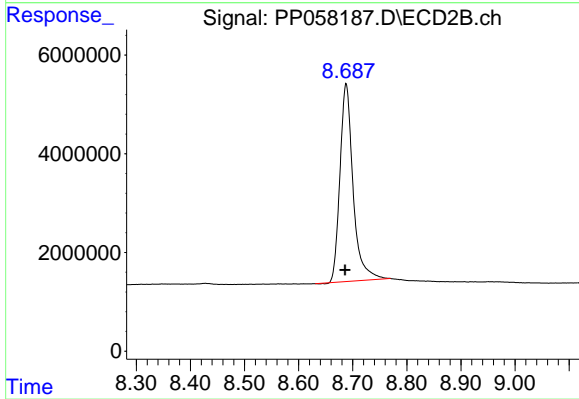
Instrument :  
 ECD\_P  
 ClientSampleId :



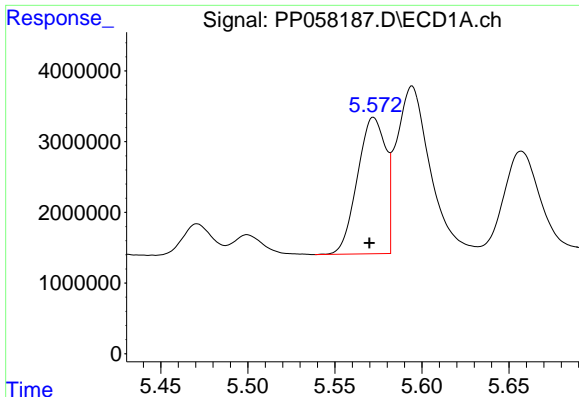
#1 Tetrachloro-m-xylene  
 R.T.: 3.624 min  
 Delta R.T.: 0.000 min  
 Response: 109761453  
 Conc: 48.39 ng/ml



#2 Decachlorobiphenyl  
 R.T.: 10.230 min  
 Delta R.T.: 0.006 min  
 Response: 55242971  
 Conc: 48.75 ng/ml



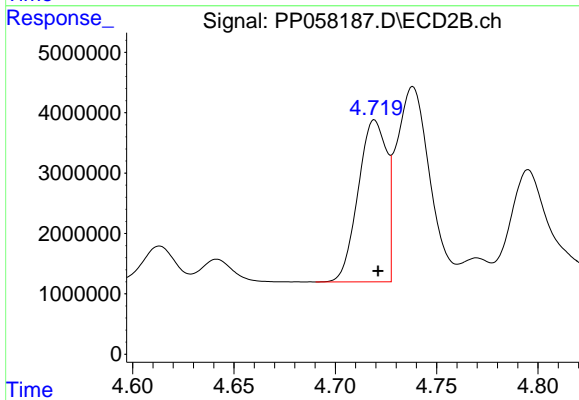
#2 Decachlorobiphenyl  
 R.T.: 8.688 min  
 Delta R.T.: 0.002 min  
 Response: 67419588  
 Conc: 42.95 ng/ml



#3 AR-1016-1

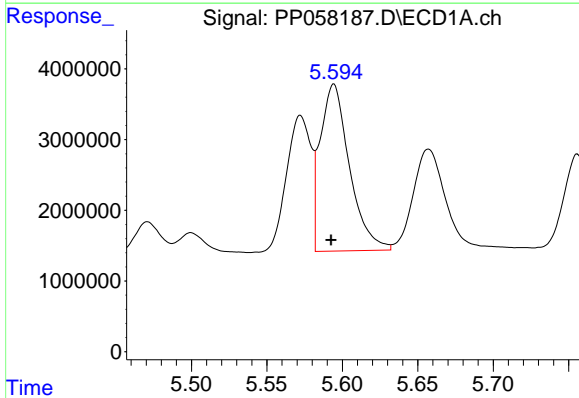
R.T.: 5.572 min  
 Delta R.T.: 0.002 min  
 Response: 21774158  
 Conc: 349.53 ng/ml

Instrument :  
 ECD\_P  
 ClientSampleId :



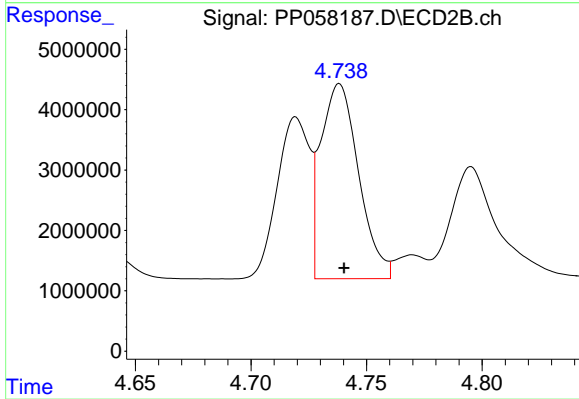
#3 AR-1016-1

R.T.: 4.719 min  
 Delta R.T.: -0.002 min  
 Response: 26164056  
 Conc: 351.10 ng/ml



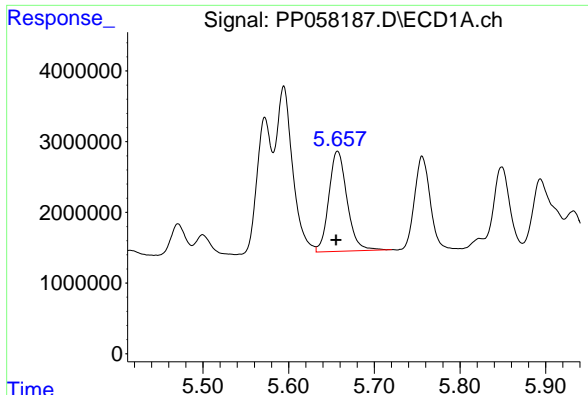
#4 AR-1016-2

R.T.: 5.594 min  
 Delta R.T.: 0.002 min  
 Response: 31861439  
 Conc: 354.38 ng/ml



#4 AR-1016-2

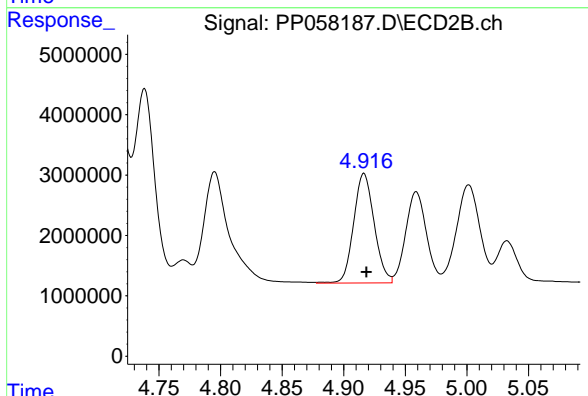
R.T.: 4.738 min  
 Delta R.T.: -0.002 min  
 Response: 36862473  
 Conc: 356.61 ng/ml



#5 AR-1016-3

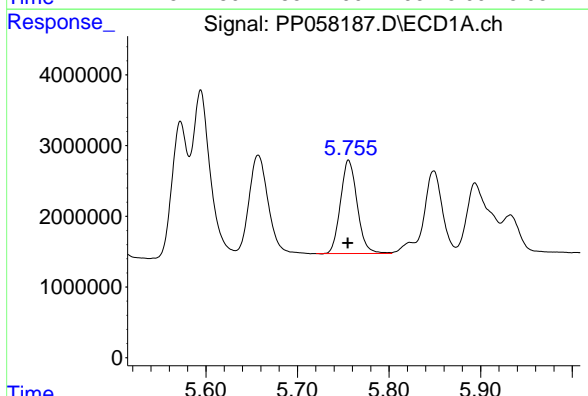
R.T.: 5.657 min  
 Delta R.T.: 0.002 min  
 Response: 20959777  
 Conc: 370.68 ng/ml

Instrument :  
 ECD\_P  
 ClientSampleId :



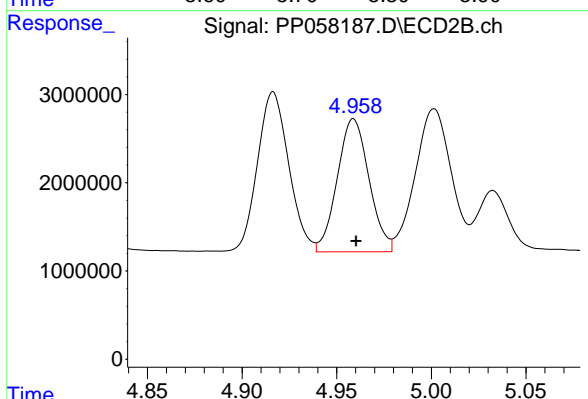
#5 AR-1016-3

R.T.: 4.916 min  
 Delta R.T.: -0.002 min  
 Response: 21049501  
 Conc: 357.04 ng/ml



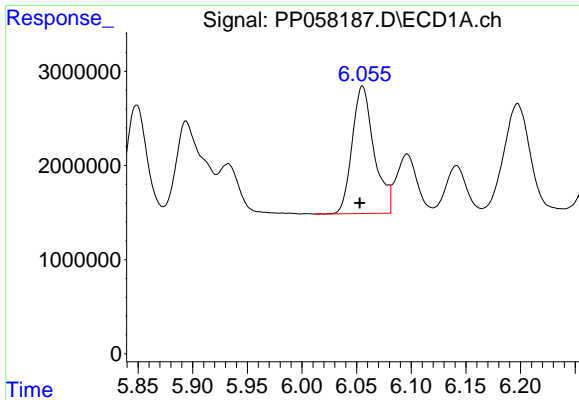
#6 AR-1016-4

R.T.: 5.756 min  
 Delta R.T.: 0.001 min  
 Response: 16734520  
 Conc: 362.36 ng/ml



#6 AR-1016-4

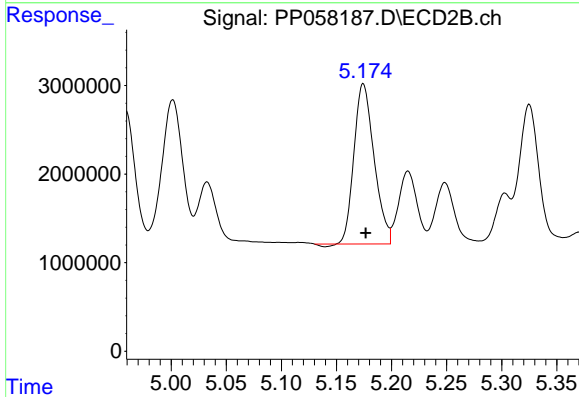
R.T.: 4.959 min  
 Delta R.T.: -0.001 min  
 Response: 17602447  
 Conc: 374.21 ng/ml



#7 AR-1016-5

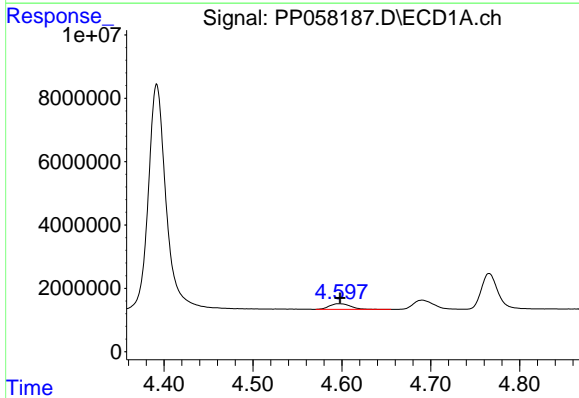
R.T.: 6.055 min  
 Delta R.T.: 0.003 min  
 Response: 18934249  
 Conc: 405.99 ng/ml

Instrument :  
 ECD\_P  
 ClientSampleId :



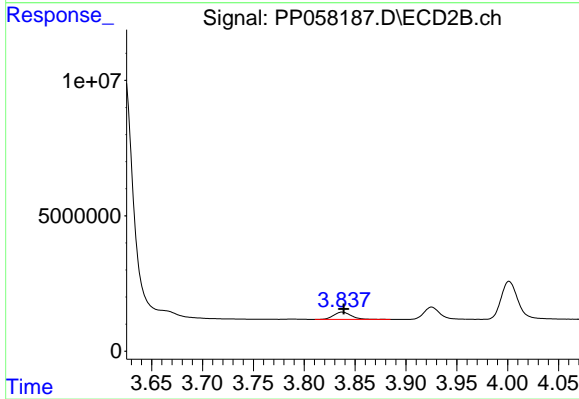
#7 AR-1016-5

R.T.: 5.174 min  
 Delta R.T.: -0.002 min  
 Response: 22879185  
 Conc: 385.33 ng/ml



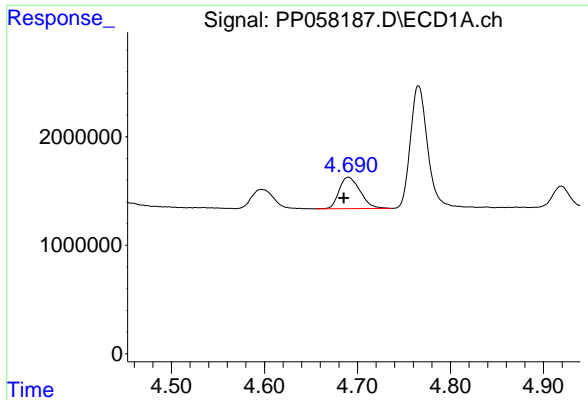
#8 AR-1221-1

R.T.: 4.597 min  
 Delta R.T.: -0.001 min  
 Response: 2911448  
 Conc: 100.61 ng/ml



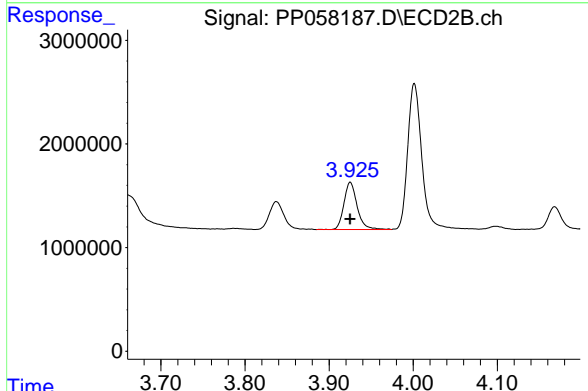
#8 AR-1221-1

R.T.: 3.837 min  
 Delta R.T.: -0.001 min  
 Response: 3244611  
 Conc: 110.03 ng/ml

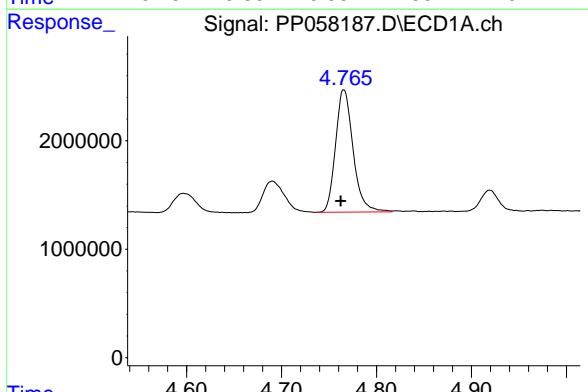


#9 AR-1221-2  
 R.T.: 4.690 min  
 Delta R.T.: 0.005 min  
 Response: 4543518  
 Conc: 209.64 ng/ml

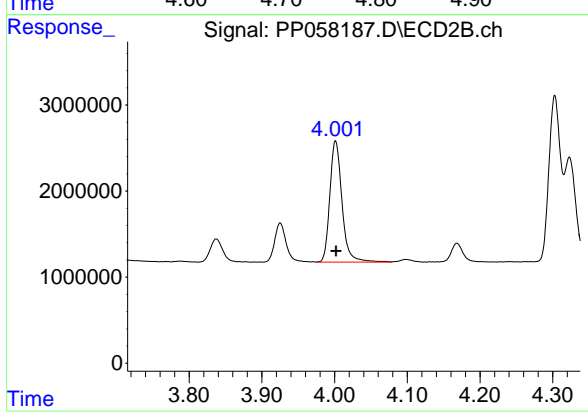
Instrument :  
 ECD\_P  
 ClientSampleId :



#9 AR-1221-2  
 R.T.: 3.925 min  
 Delta R.T.: 0.000 min  
 Response: 5010254  
 Conc: 224.93 ng/ml

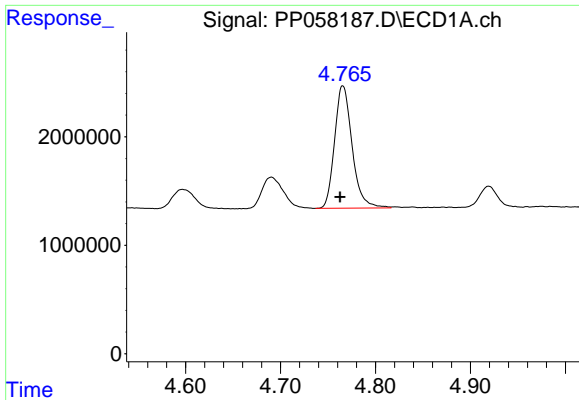


#10 AR-1221-3  
 R.T.: 4.766 min  
 Delta R.T.: 0.003 min  
 Response: 14518788  
 Conc: 241.01 ng/ml



#10 AR-1221-3  
 R.T.: 4.001 min  
 Delta R.T.: 0.000 min  
 Response: 16440956  
 Conc: 258.05 ng/ml

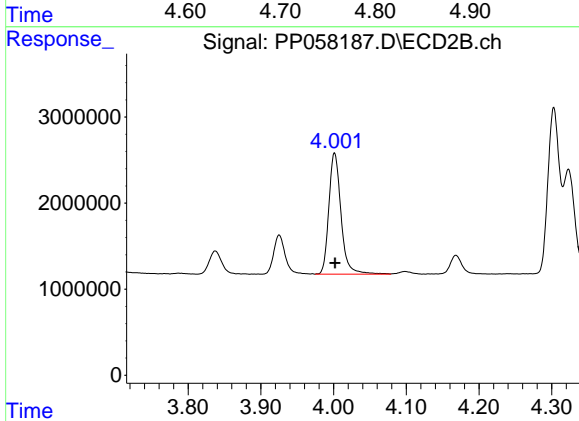




#11 AR-1232-1

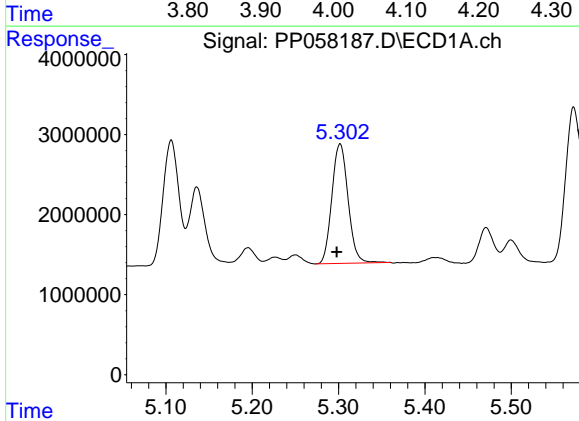
R.T.: 4.766 min  
 Delta R.T.: 0.003 min  
 Response: 14518788  
 Conc: 331.47 ng/ml

Instrument :  
 ECD\_P  
 ClientSampleId :



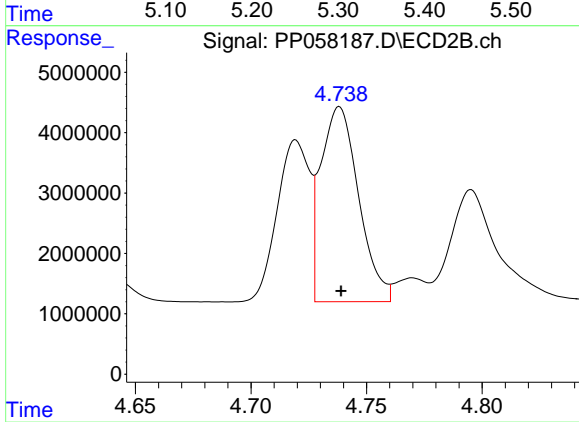
#11 AR-1232-1

R.T.: 4.001 min  
 Delta R.T.: 0.000 min  
 Response: 16440956  
 Conc: 356.26 ng/ml



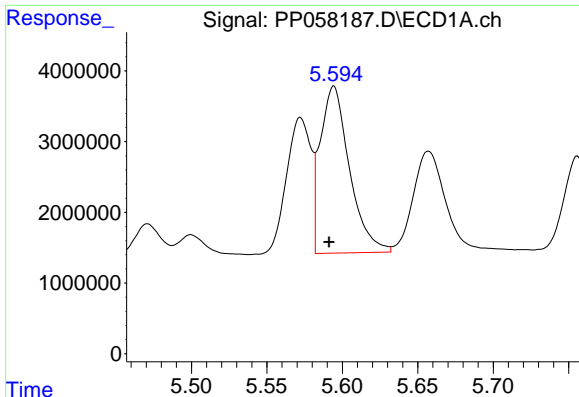
#12 AR-1232-2

R.T.: 5.302 min  
 Delta R.T.: 0.004 min  
 Response: 19472044  
 Conc: 746.67 ng/ml



#12 AR-1232-2

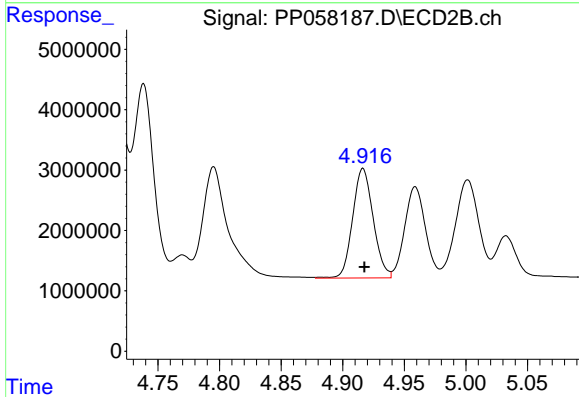
R.T.: 4.738 min  
 Delta R.T.: 0.000 min  
 Response: 36862473  
 Conc: 778.97 ng/ml



#13 AR-1232-3

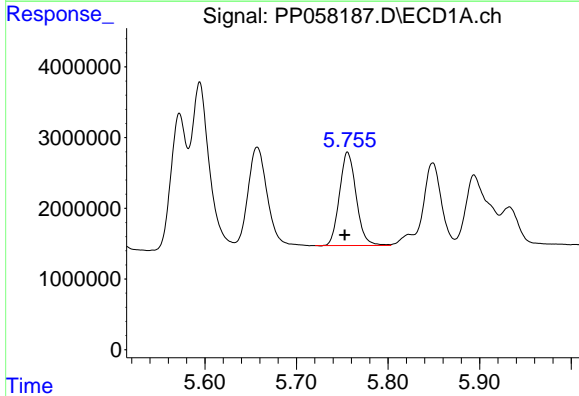
R.T.: 5.594 min  
 Delta R.T.: 0.003 min  
 Response: 31861439  
 Conc: 780.67 ng/ml

Instrument :  
 ECD\_P  
 ClientSampleId :



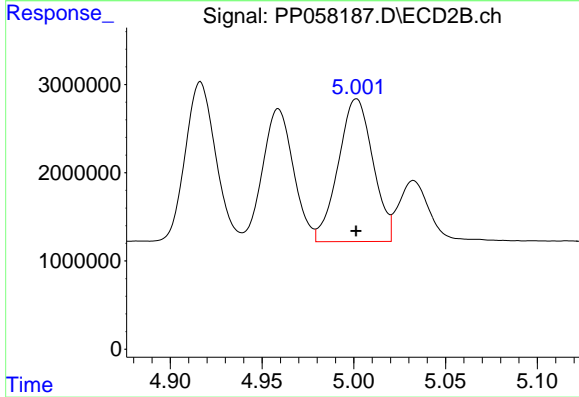
#13 AR-1232-3

R.T.: 4.916 min  
 Delta R.T.: -0.001 min  
 Response: 21049501  
 Conc: 773.35 ng/ml



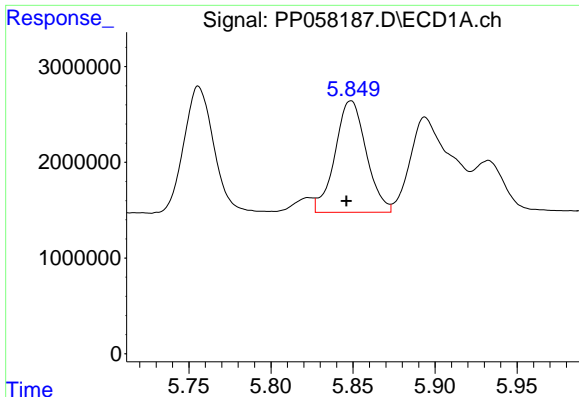
#14 AR-1232-4

R.T.: 5.756 min  
 Delta R.T.: 0.003 min  
 Response: 16734520  
 Conc: 785.86 ng/ml



#14 AR-1232-4

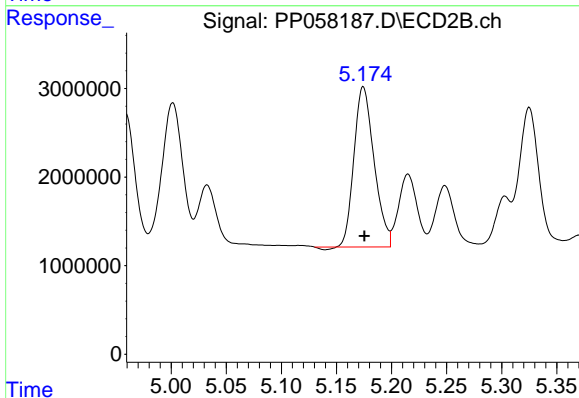
R.T.: 5.001 min  
 Delta R.T.: 0.000 min  
 Response: 21281089  
 Conc: 872.94 ng/ml



#15 AR-1232-5

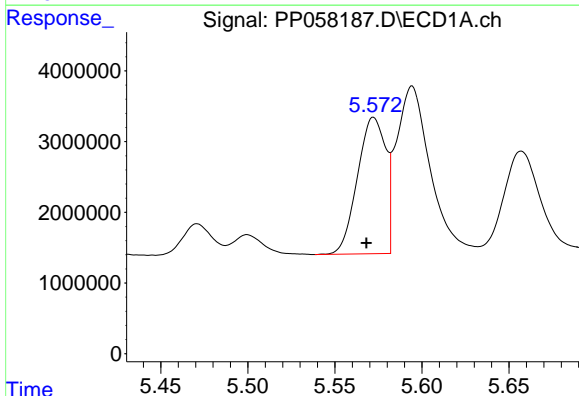
R.T.: 5.849 min  
Delta R.T.: 0.003 min  
Response: 15422876  
Conc: 844.49 ng/ml

Instrument :  
ECD\_P  
ClientSampleId :



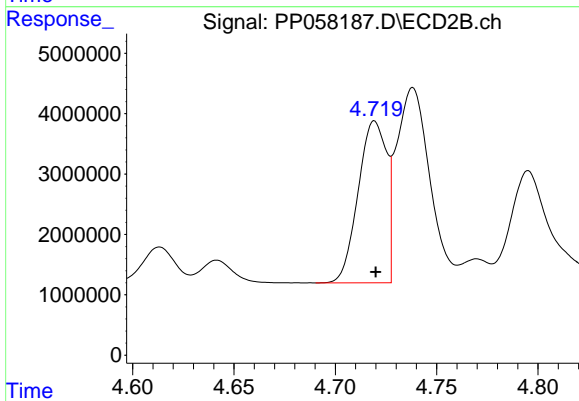
#15 AR-1232-5

R.T.: 5.174 min  
Delta R.T.: -0.001 min  
Response: 22879185  
Conc: 827.39 ng/ml



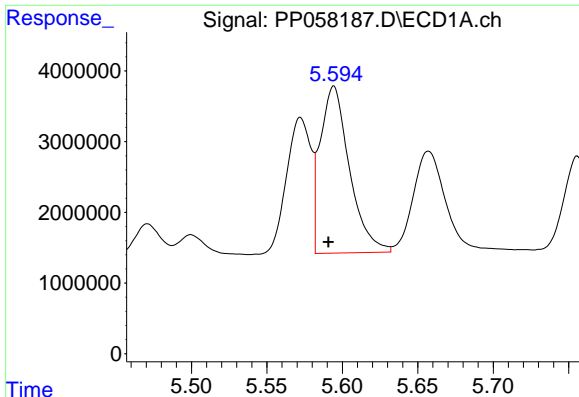
#16 AR-1242-1

R.T.: 5.572 min  
Delta R.T.: 0.004 min  
Response: 21774158  
Conc: 457.08 ng/ml



#16 AR-1242-1

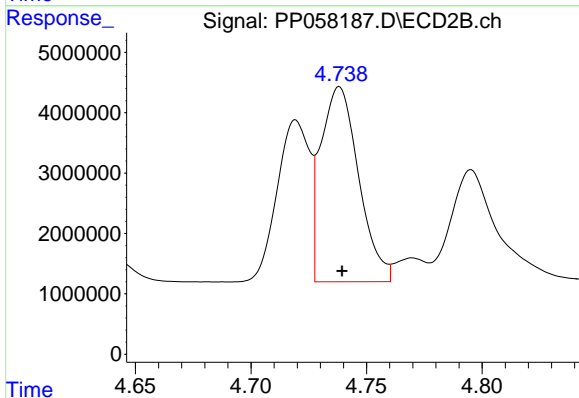
R.T.: 4.719 min  
Delta R.T.: 0.000 min  
Response: 26164056  
Conc: 449.47 ng/ml



#17 AR-1242-2

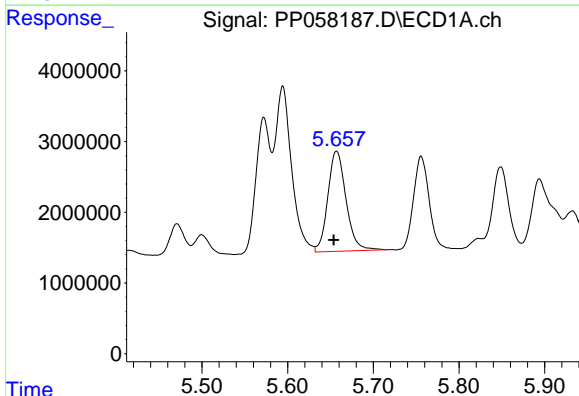
R.T.: 5.594 min  
 Delta R.T.: 0.003 min  
 Response: 31861439  
 Conc: 465.90 ng/ml

Instrument :  
 ECD\_P  
 ClientSampleId :



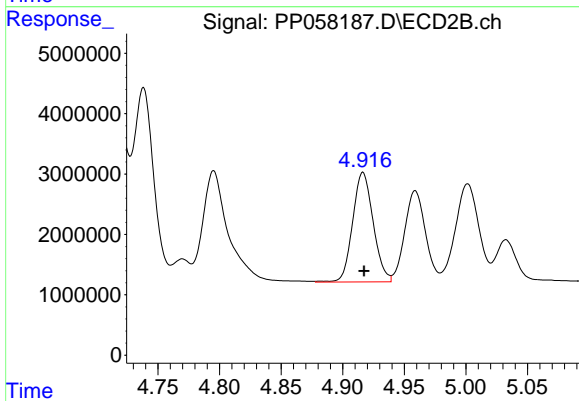
#17 AR-1242-2

R.T.: 4.738 min  
 Delta R.T.: -0.001 min  
 Response: 36862473  
 Conc: 461.83 ng/ml



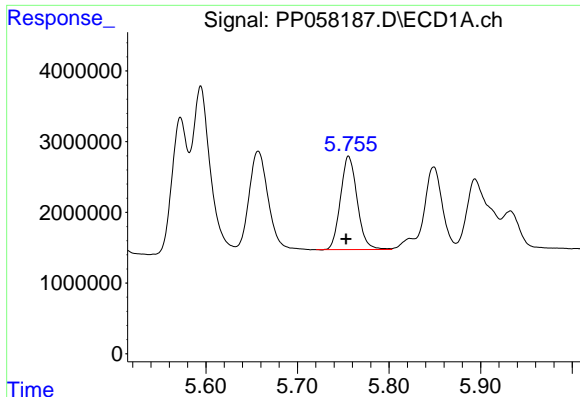
#18 AR-1242-3

R.T.: 5.657 min  
 Delta R.T.: 0.003 min  
 Response: 20959777  
 Conc: 481.39 ng/ml



#18 AR-1242-3

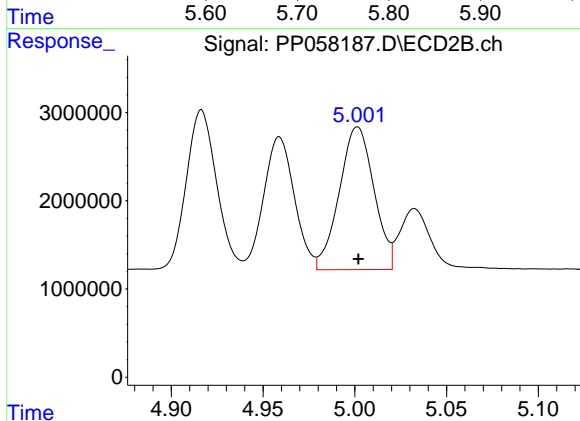
R.T.: 4.916 min  
 Delta R.T.: 0.000 min  
 Response: 21049501  
 Conc: 448.83 ng/ml



#19 AR-1242-4

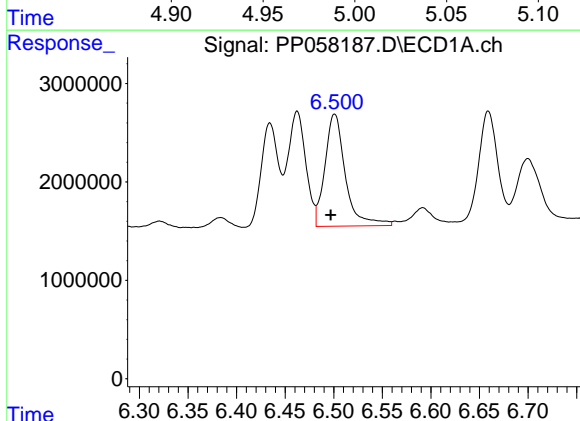
R.T.: 5.756 min  
 Delta R.T.: 0.003 min  
 Response: 16734520  
 Conc: 474.91 ng/ml

Instrument :  
 ECD\_P  
 ClientSampleId :



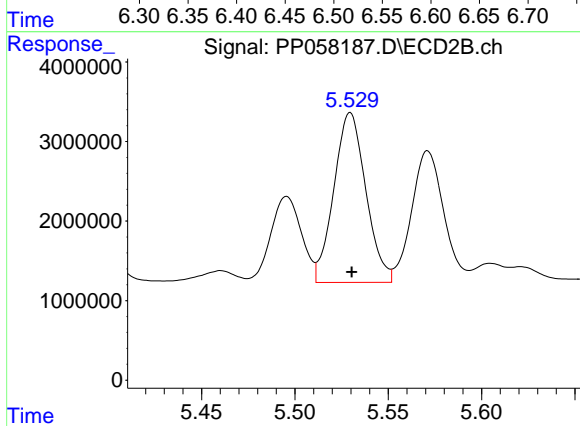
#19 AR-1242-4

R.T.: 5.001 min  
 Delta R.T.: 0.000 min  
 Response: 21281089  
 Conc: 458.64 ng/ml



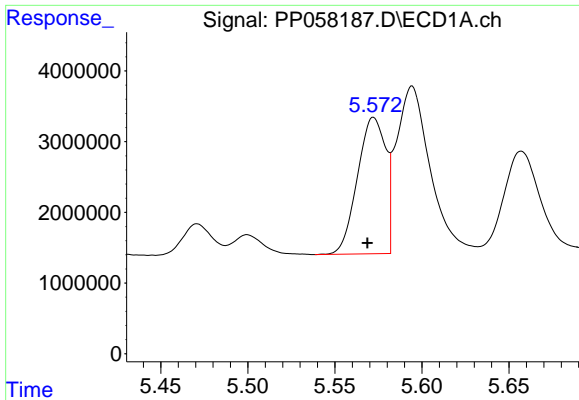
#20 AR-1242-5

R.T.: 6.501 min  
 Delta R.T.: 0.004 min  
 Response: 16725593  
 Conc: 516.20 ng/ml



#20 AR-1242-5

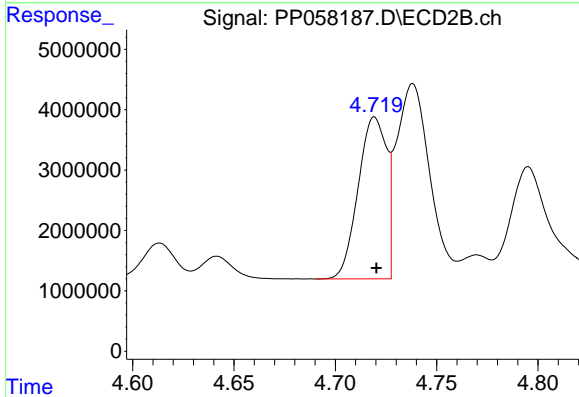
R.T.: 5.530 min  
 Delta R.T.: 0.000 min  
 Response: 25476439  
 Conc: 455.67 ng/ml



#21 AR-1248-1

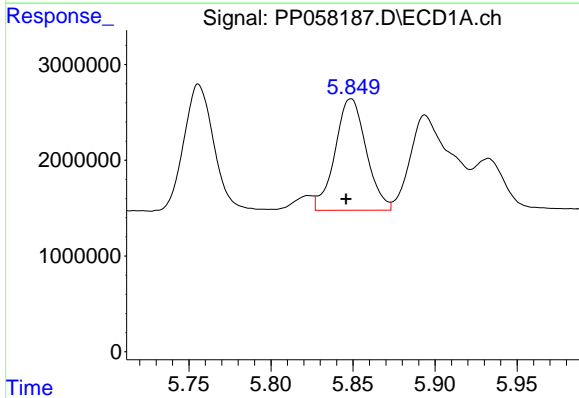
R.T.: 5.572 min  
 Delta R.T.: 0.003 min  
 Response: 21774158  
 Conc: 517.41 ng/ml

Instrument :  
 ECD\_P  
 ClientSampleId :



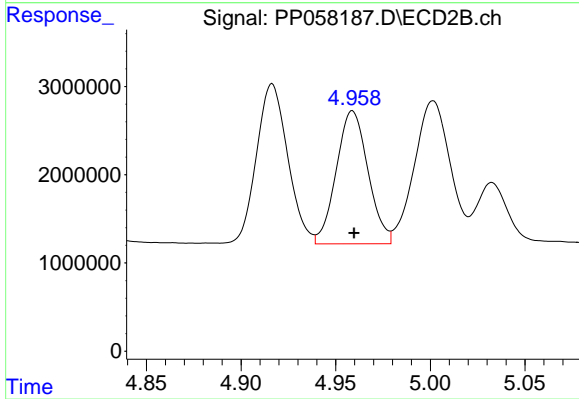
#21 AR-1248-1

R.T.: 4.719 min  
 Delta R.T.: 0.000 min  
 Response: 26164056  
 Conc: 508.45 ng/ml



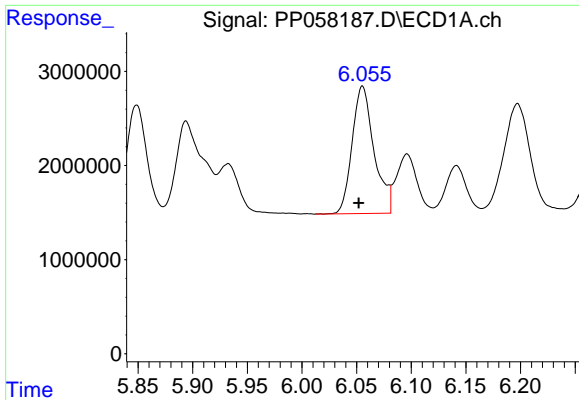
#22 AR-1248-2

R.T.: 5.849 min  
 Delta R.T.: 0.003 min  
 Response: 15422876  
 Conc: 236.55 ng/ml



#22 AR-1248-2

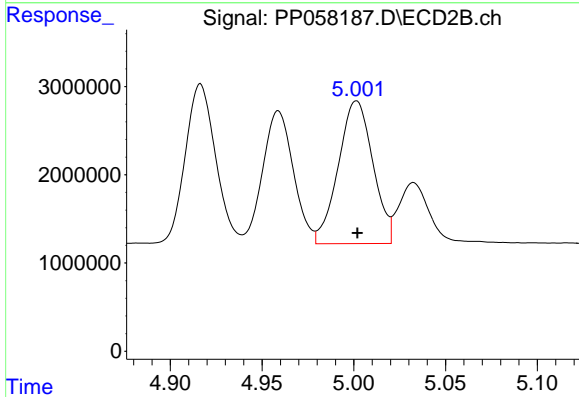
R.T.: 4.959 min  
 Delta R.T.: 0.000 min  
 Response: 17602447  
 Conc: 245.15 ng/ml



#23 AR-1248-3

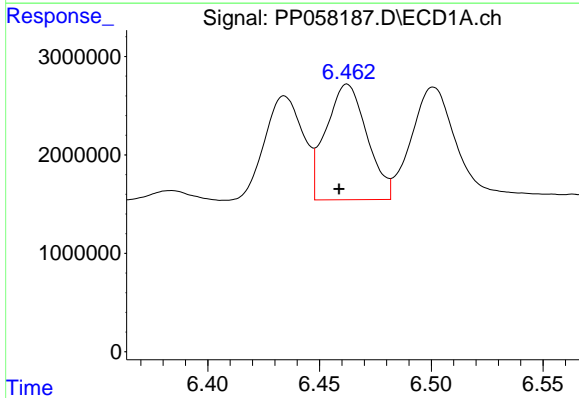
R.T.: 6.055 min  
 Delta R.T.: 0.003 min  
 Response: 18934249  
 Conc: 272.66 ng/ml

Instrument :  
 ECD\_P  
 ClientSampleId :



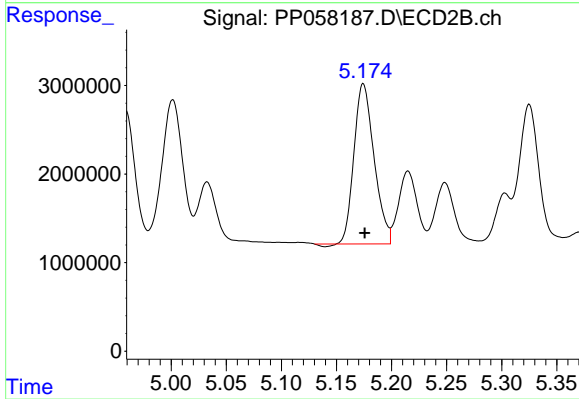
#23 AR-1248-3

R.T.: 5.001 min  
 Delta R.T.: 0.000 min  
 Response: 21281089  
 Conc: 281.28 ng/ml



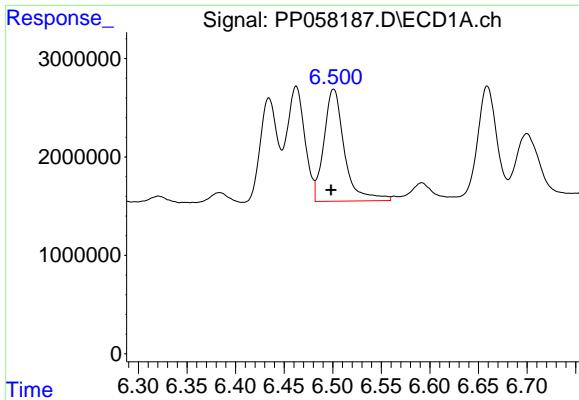
#24 AR-1248-4

R.T.: 6.462 min  
 Delta R.T.: 0.004 min  
 Response: 14994588  
 Conc: 234.62 ng/ml



#24 AR-1248-4

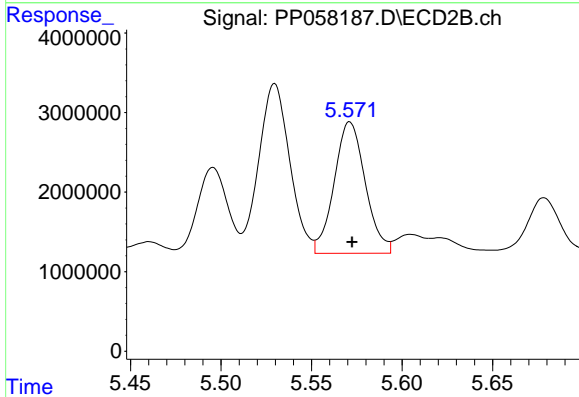
R.T.: 5.174 min  
 Delta R.T.: -0.001 min  
 Response: 22879185  
 Conc: 256.49 ng/ml



#25 AR-1248-5

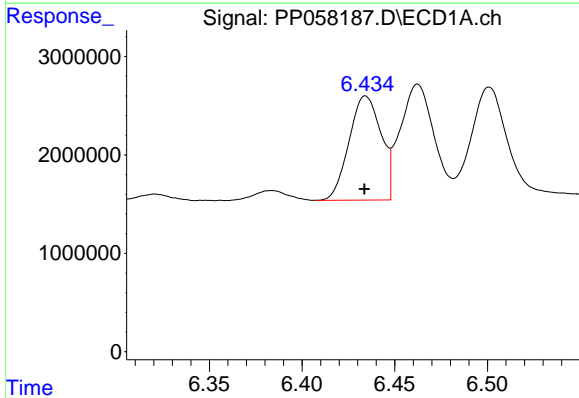
R.T.: 6.501 min  
 Delta R.T.: 0.003 min  
 Response: 16725593  
 Conc: 260.69 ng/ml

Instrument :  
 ECD\_P  
 ClientSampleId :



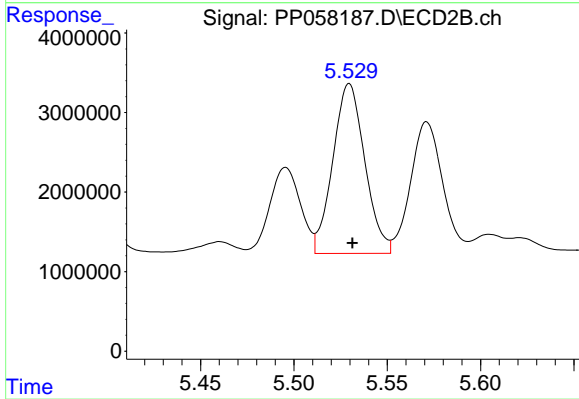
#25 AR-1248-5

R.T.: 5.571 min  
 Delta R.T.: -0.001 min  
 Response: 19801179  
 Conc: 238.16 ng/ml



#26 AR-1254-1

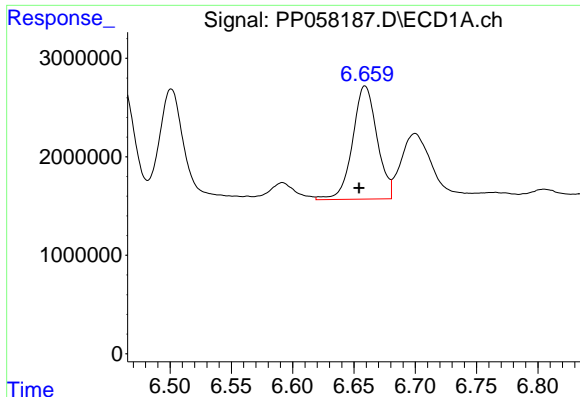
R.T.: 6.434 min  
 Delta R.T.: 0.000 min  
 Response: 12722655  
 Conc: 189.56 ng/ml



#26 AR-1254-1

R.T.: 5.530 min  
 Delta R.T.: -0.002 min  
 Response: 25476439  
 Conc: 228.16 ng/ml

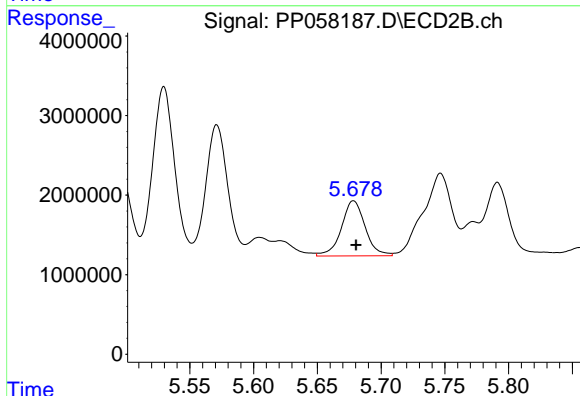




#27 AR-1254-2

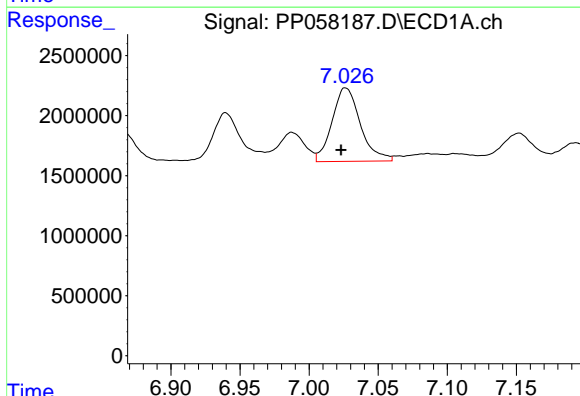
R.T.: 6.659 min  
 Delta R.T.: 0.005 min  
 Response: 15961569  
 Conc: 168.73 ng/ml

Instrument :  
 ECD\_P  
 ClientSampleId :



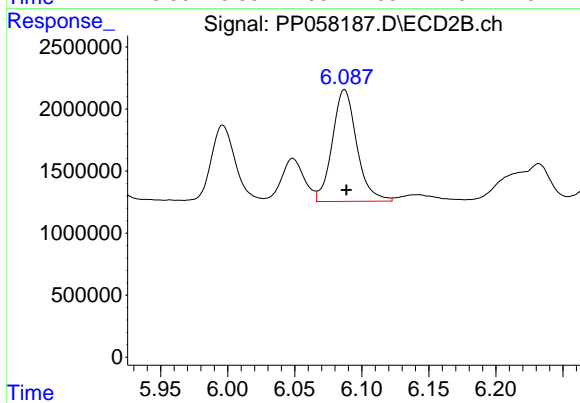
#27 AR-1254-2

R.T.: 5.678 min  
 Delta R.T.: -0.002 min  
 Response: 9020984  
 Conc: 90.39 ng/ml



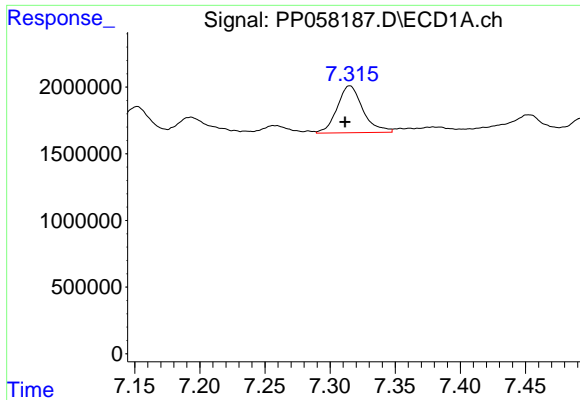
#28 AR-1254-3

R.T.: 7.026 min  
 Delta R.T.: 0.003 min  
 Response: 8740299  
 Conc: 95.95 ng/ml



#28 AR-1254-3

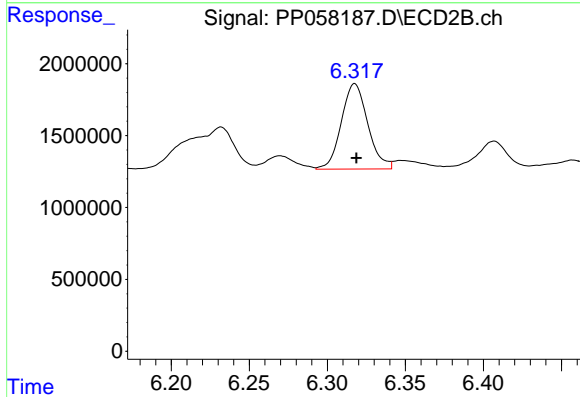
R.T.: 6.087 min  
 Delta R.T.: -0.001 min  
 Response: 11430246  
 Conc: 73.06 ng/ml



#29 AR-1254-4

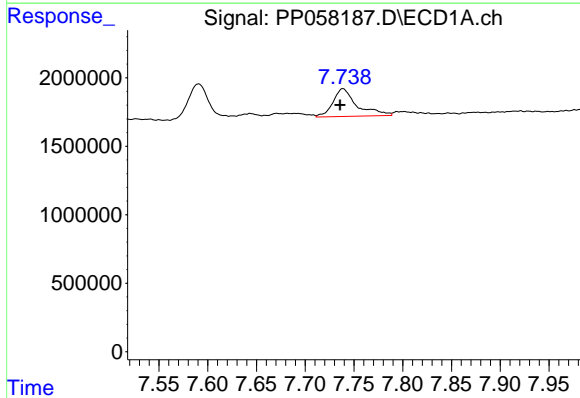
R.T.: 7.315 min  
 Delta R.T.: 0.004 min  
 Response: 4838888  
 Conc: 81.24 ng/ml

Instrument :  
 ECD\_P  
 ClientSampleId :



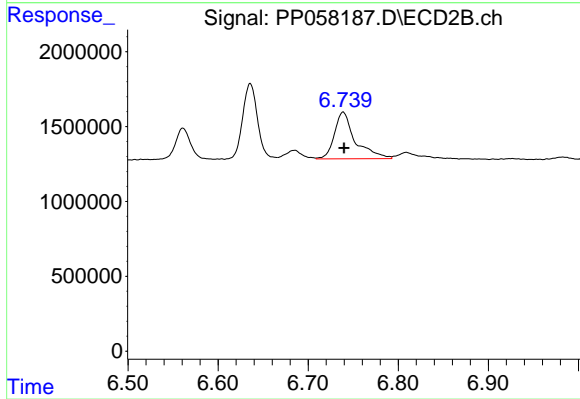
#29 AR-1254-4

R.T.: 6.318 min  
 Delta R.T.: 0.000 min  
 Response: 7017517  
 Conc: 76.07 ng/ml



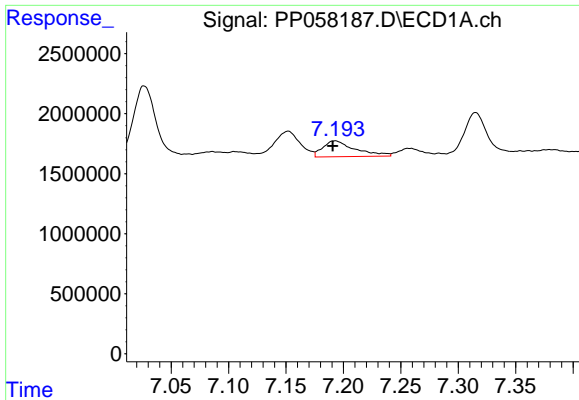
#30 AR-1254-5

R.T.: 7.739 min  
 Delta R.T.: 0.003 min  
 Response: 3469293  
 Conc: 50.53 ng/ml



#30 AR-1254-5

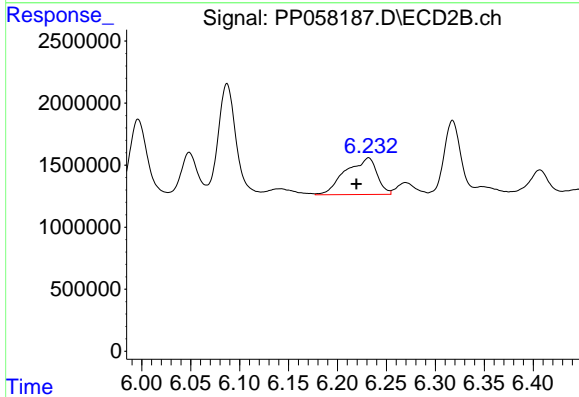
R.T.: 6.739 min  
 Delta R.T.: -0.001 min  
 Response: 5002587  
 Conc: 34.56 ng/ml



#31 AR-1260-1

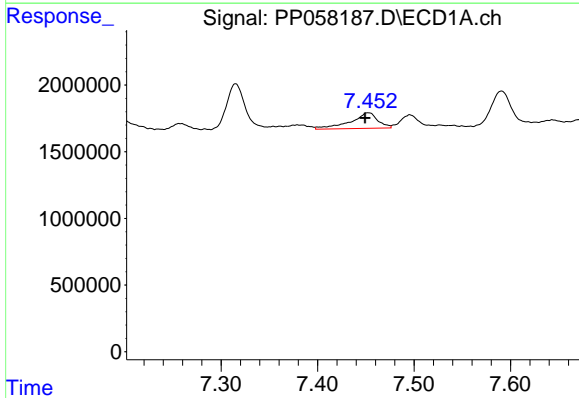
R.T.: 7.193 min  
 Delta R.T.: 0.002 min  
 Response: 2578551  
 Conc: 32.68 ng/ml

Instrument :  
 ECD\_P  
 ClientSampleId :



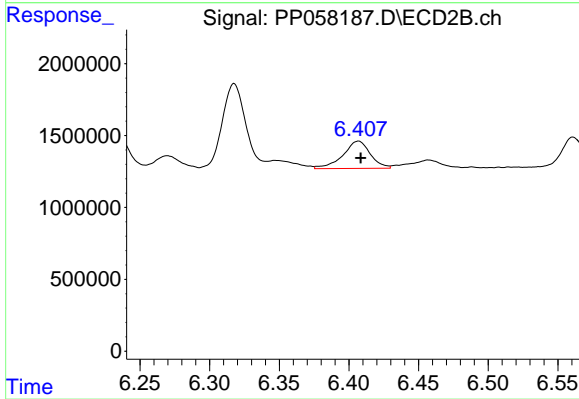
#31 AR-1260-1

R.T.: 6.232 min  
 Delta R.T.: 0.012 min  
 Response: 6629345  
 Conc: 60.30 ng/ml



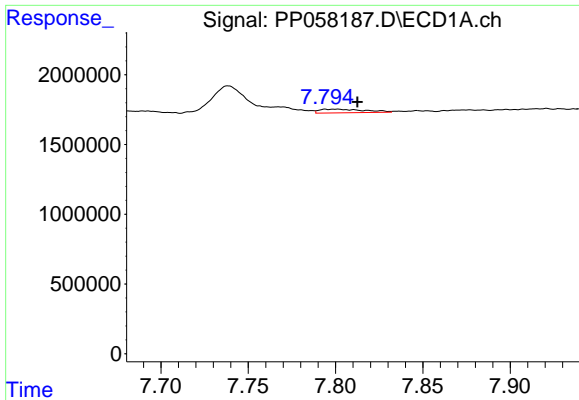
#32 AR-1260-2

R.T.: 7.452 min  
 Delta R.T.: 0.003 min  
 Response: 2301120  
 Conc: 28.72 ng/ml



#32 AR-1260-2

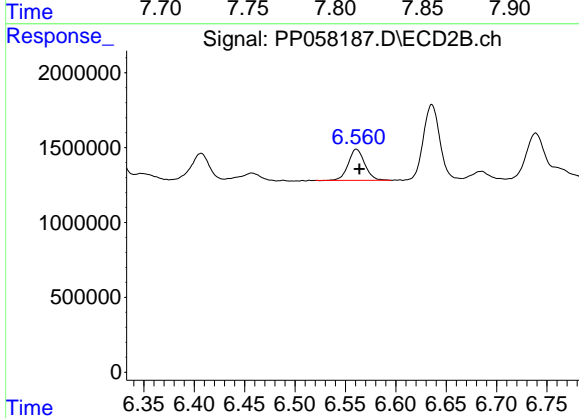
R.T.: 6.407 min  
 Delta R.T.: -0.002 min  
 Response: 2604022  
 Conc: 20.49 ng/ml



#33 AR-1260-3

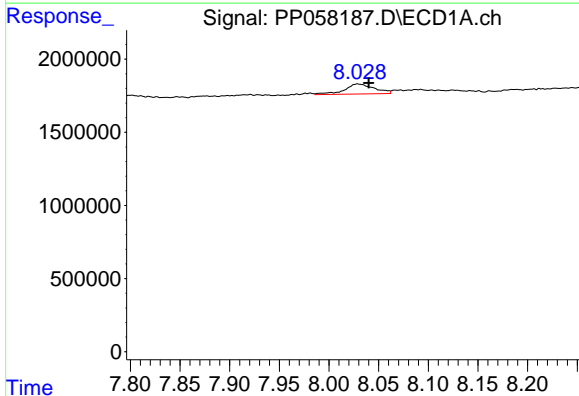
R.T.: 7.801 min  
 Delta R.T.: -0.012 min  
 Response: 461886  
 Conc: 8.11 ng/ml

Instrument :  
 ECD\_P  
 ClientSampleId :



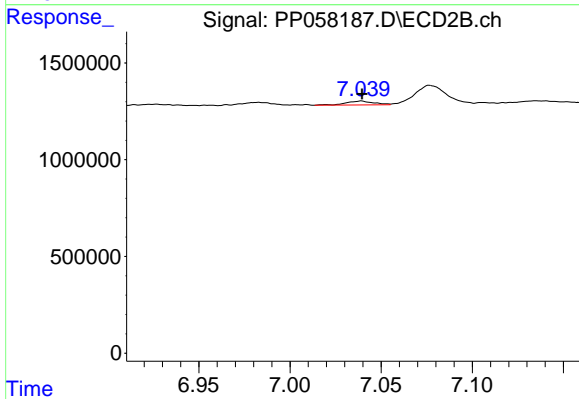
#33 AR-1260-3

R.T.: 6.561 min  
 Delta R.T.: -0.003 min  
 Response: 2368388  
 Conc: 19.31 ng/ml



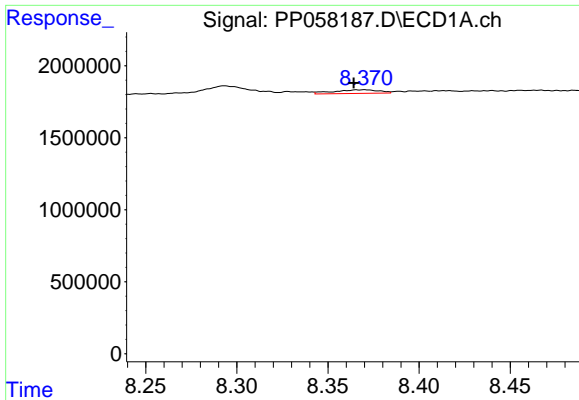
#34 AR-1260-4

R.T.: 8.029 min  
 Delta R.T.: -0.011 min  
 Response: 1430462  
 Conc: 21.53 ng/ml



#34 AR-1260-4

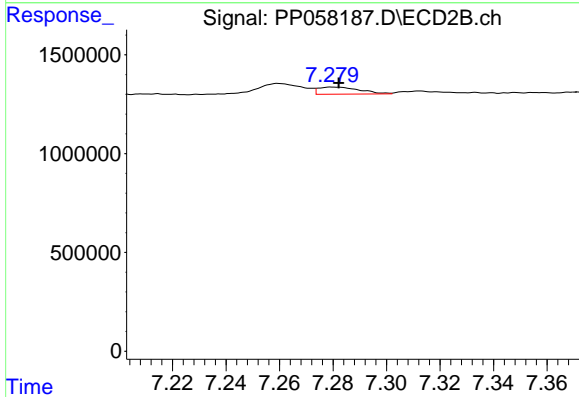
R.T.: 7.039 min  
 Delta R.T.: 0.000 min  
 Response: 214150  
 Conc: 2.45 ng/ml



#35 AR-1260-5

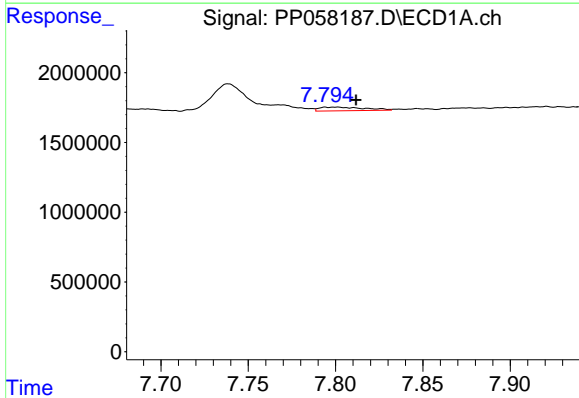
R.T.: 8.370 min  
 Delta R.T.: 0.006 min  
 Response: 434445  
 Conc: 4.05 ng/ml

Instrument :  
 ECD\_P  
 ClientSampleId :



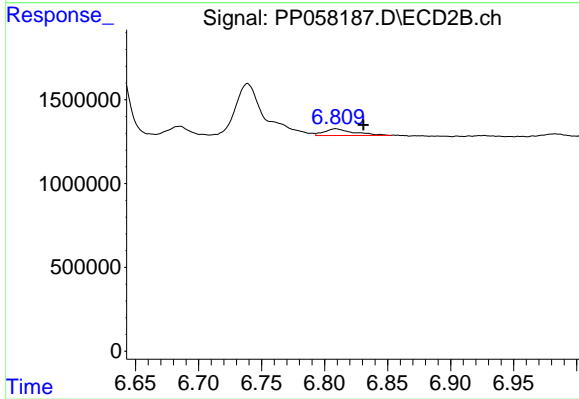
#35 AR-1260-5

R.T.: 7.280 min  
 Delta R.T.: -0.002 min  
 Response: 384744  
 Conc: 2.08 ng/ml



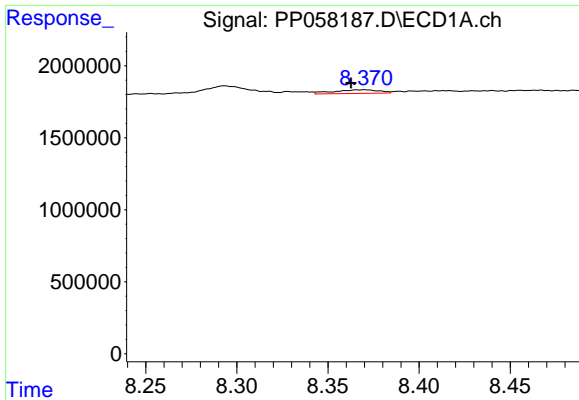
#36 AR-1262-1

R.T.: 7.801 min  
 Delta R.T.: -0.011 min  
 Response: 461886  
 Conc: 5.36 ng/ml



#36 AR-1262-1

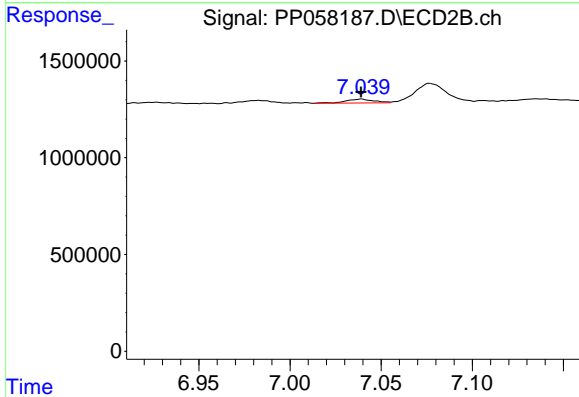
R.T.: 6.809 min  
 Delta R.T.: -0.022 min  
 Response: 661206  
 Conc: 10.41 ng/ml



#37 AR-1262-2

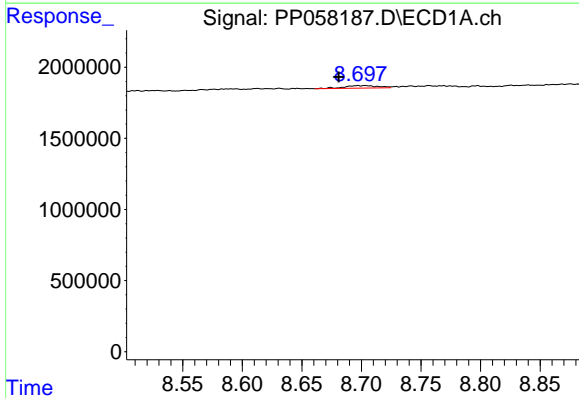
R.T.: 8.370 min  
 Delta R.T.: 0.008 min  
 Response: 434445  
 Conc: 3.57 ng/ml

Instrument :  
 ECD\_P  
 ClientSampleId :



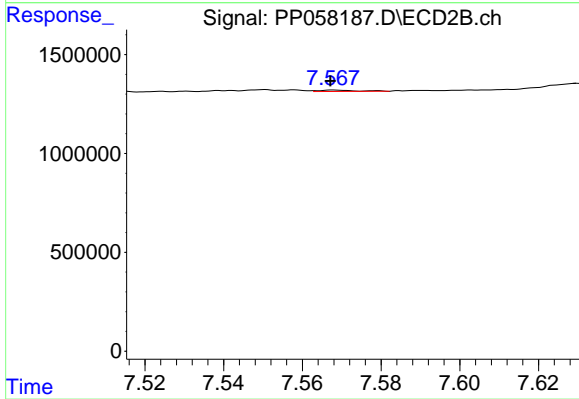
#37 AR-1262-2

R.T.: 7.039 min  
 Delta R.T.: 0.000 min  
 Response: 214150  
 Conc: 1.73 ng/ml



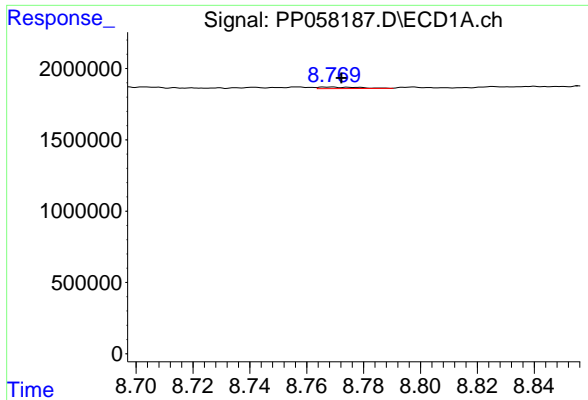
#38 AR-1262-3

R.T.: 8.697 min  
 Delta R.T.: 0.016 min  
 Response: 354282  
 Conc: 4.07 ng/ml



#38 AR-1262-3

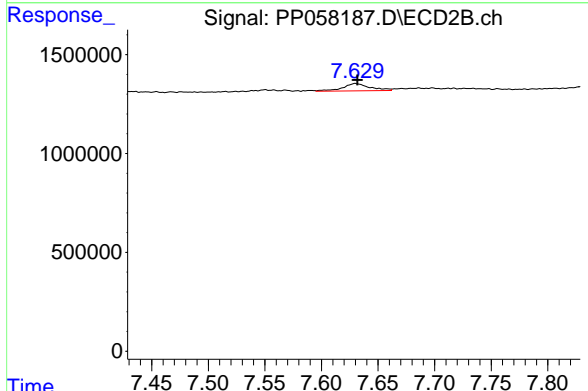
R.T.: 7.568 min  
 Delta R.T.: 0.001 min  
 Response: 45483  
 Conc: 0.48 ng/ml



#39 AR-1262-4

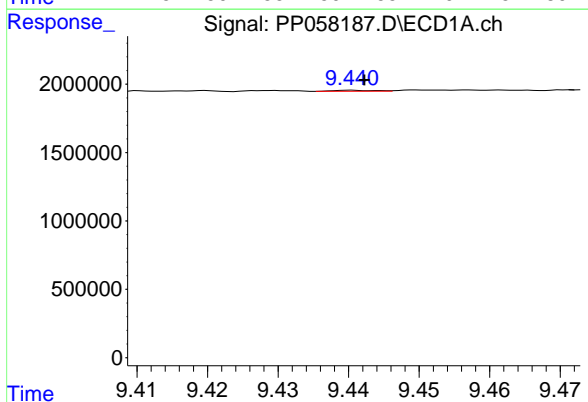
R.T.: 8.768 min  
 Delta R.T.: -0.004 min  
 Response: 99615  
 Conc: 1.49 ng/ml

Instrument :  
 ECD\_P  
 ClientSampleId :



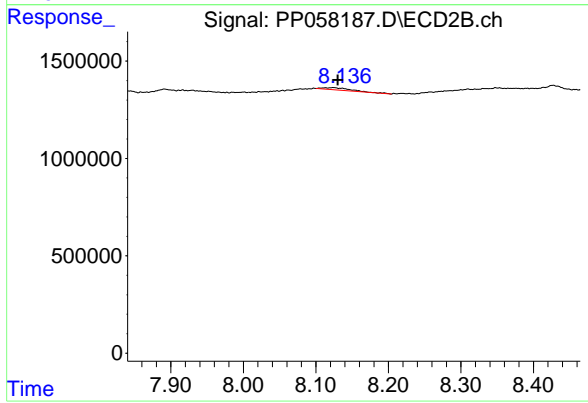
#39 AR-1262-4

R.T.: 7.630 min  
 Delta R.T.: -0.002 min  
 Response: 612121  
 Conc: 3.59 ng/ml



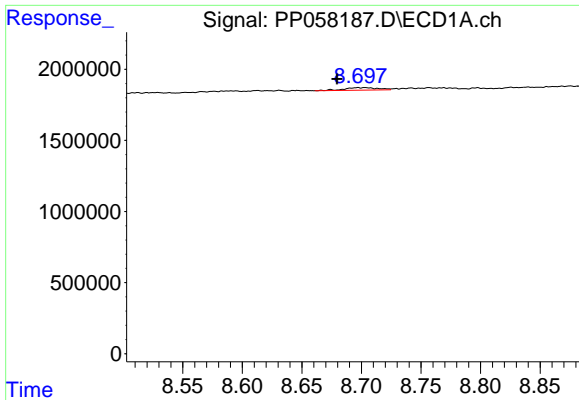
#40 AR-1262-5

R.T.: 9.441 min  
 Delta R.T.: -0.002 min  
 Response: 30694  
 Conc: 0.80 ng/ml



#40 AR-1262-5

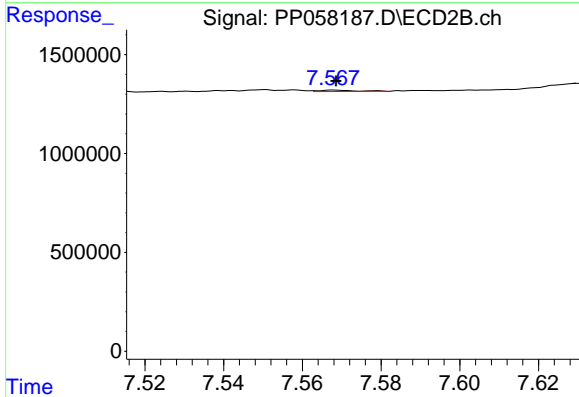
R.T.: 8.124 min  
 Delta R.T.: -0.006 min  
 Response: 300088  
 Conc: 4.08 ng/ml



#41 AR-1268-1

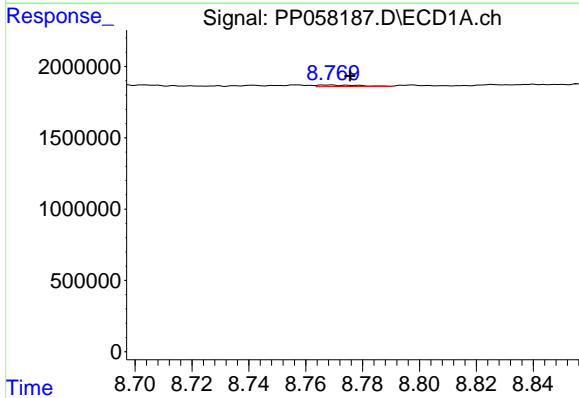
R.T.: 8.697 min  
 Delta R.T.: 0.017 min  
 Response: 354282  
 Conc: 2.28 ng/ml

Instrument :  
 ECD\_P  
 ClientSampleId :



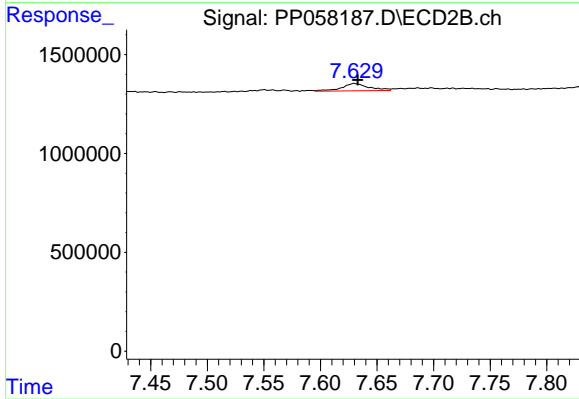
#41 AR-1268-1

R.T.: 7.568 min  
 Delta R.T.: 0.000 min  
 Response: 45483  
 Conc: 0.17 ng/ml



#42 AR-1268-2

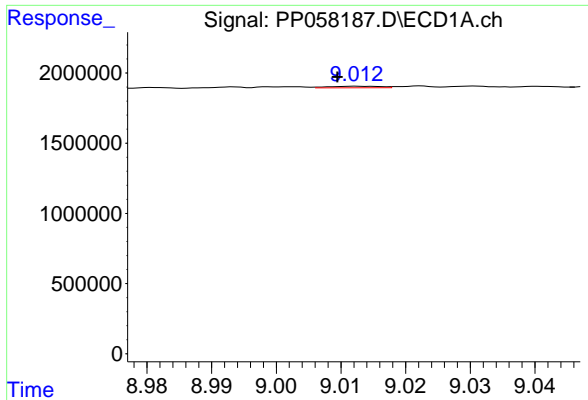
R.T.: 8.768 min  
 Delta R.T.: -0.007 min  
 Response: 99615  
 Conc: 0.76 ng/ml



#42 AR-1268-2

R.T.: 7.630 min  
 Delta R.T.: -0.003 min  
 Response: 612121  
 Conc: 2.50 ng/ml

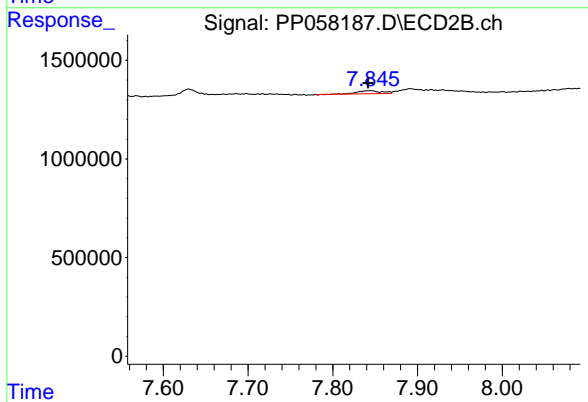




#43 AR-1268-3

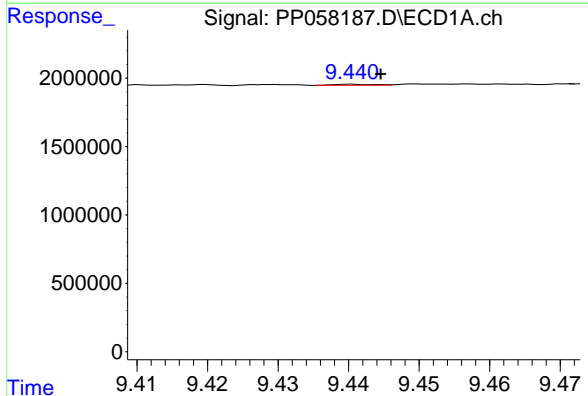
R.T.: 9.013 min  
 Delta R.T.: 0.003 min  
 Response: 63732  
 Conc: 0.49 ng/ml

Instrument :  
 ECD\_P  
 ClientSampleId :



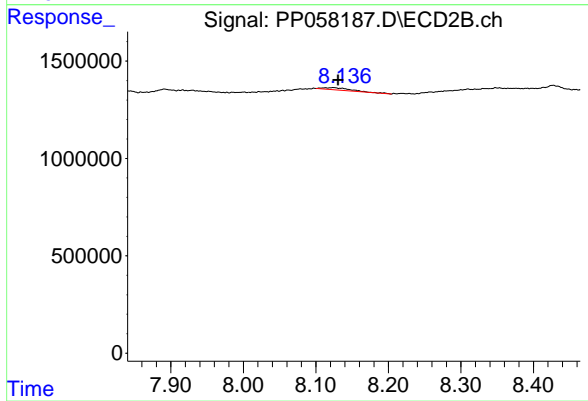
#43 AR-1268-3

R.T.: 7.844 min  
 Delta R.T.: 0.002 min  
 Response: 305353  
 Conc: 1.51 ng/ml



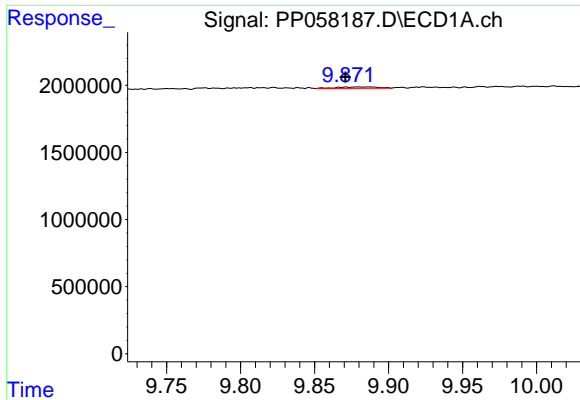
#44 AR-1268-4

R.T.: 9.441 min  
 Delta R.T.: -0.004 min  
 Response: 30694  
 Conc: 0.72 ng/ml



#44 AR-1268-4

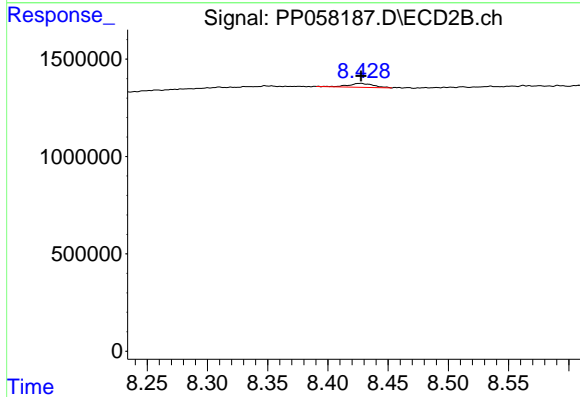
R.T.: 8.124 min  
 Delta R.T.: -0.007 min  
 Response: 300088  
 Conc: 3.62 ng/ml



#45 AR-1268-5

R.T.: 9.872 min  
 Delta R.T.: 0.000 min  
 Response: 192685  
 Conc: 0.59 ng/ml

Instrument :  
 ECD\_P  
 ClientSampleId :



#45 AR-1268-5

R.T.: 8.427 min  
 Delta R.T.: 0.000 min  
 Response: 291322  
 Conc: 0.56 ng/ml