

Data Path : Z:\pestpcbsrv\HPCHEM1\ECD\_P\Data\PP060223\  
 Data File : PP058204.D  
 Signal(s) : Signal #1: ECD1A.ch Signal #2: ECD2B.ch  
 Acq On : 02 Jun 2023 19:45  
 Operator : YP\AJ  
 Sample : 03020-01 20X  
 Misc :  
 ALS Vial : 18 Sample Multiplier: 1

Instrument :  
 ECD\_P  
 ClientSampleId :

Integration File signal 1: autoint1.e  
 Integration File signal 2: autoint2.e  
 Quant Time: Jun 04 21:11:28 2023  
 Quant Method : Z:\pestpcbsrv\HPCHEM1\ECD\_P\methods\PP050823.M  
 Quant Title : GC EXTRACTABLES  
 QLast Update : Mon May 08 19:18:05 2023  
 Response via : Initial Calibration  
 Integrator: ChemStation

Volume Inj. : 2 µl  
 Signal #1 Phase : ZB-MR1 Signal #2 Phase: ZB-MR2  
 Signal #1 Info : 30Mx0.32mmx 0.50µ Signal #2 Info : 30M x 0.32mm x 0.25µm

Compound	RT#1	RT#2	Resp#1	Resp#2	ng/ml	ng/ml
System Monitoring Compounds						
1) SA Tetrachlo...	4.379	3.619	3024402	3086163	1.379	1.361
2) SA Decachlor...	10.202	8.676	2853008	2108833	2.518	1.343 #
Target Compounds						
3) L1 AR-1016-1	5.571	4.712	631555	222070	10.138	2.980 #
4) L1 AR-1016-2	5.606	4.768f	91487	2351506	1.018	22.749 #
5) L1 AR-1016-3	5.636f	4.903f	1471719	1004794	26.028	17.043 #
6) L1 AR-1016-4	5.784f	4.956	-20175	663355	N.D.	14.102 #
7) L1 AR-1016-5	6.055	5.192f	559958	332005	12.007	5.592 #
8) L2 AR-1221-1	4.588	3.831	440192	503801	15.212	17.085
9) L2 AR-1221-2	4.698	3.933	2405198	3002837	110.974	134.808
10) L2 AR-1221-3	4.768	3.984f	301328	793237	5.002	12.450 #
11) L3 AR-1232-1	4.768	3.984f	301328	793237	6.879	17.189 #
12) L3 AR-1232-2	5.280f	4.712f	1866402	222070	71.568	4.693 #
13) L3 AR-1232-3	5.606f	4.903	91487	1004794	2.242	36.916 #
14) L3 AR-1232-4	0.000	5.015	0	1936456	N.D.	79.433 #
15) L3 AR-1232-5	5.837	5.192f	500152	332005	27.386	12.006 #
16) L4 AR-1242-1	5.571	4.712	631555	222070	13.257	3.815 #
17) L4 AR-1242-2	5.606f	4.712f	91487	222070	1.338	2.782 #
18) L4 AR-1242-3	5.636f	4.903	1471719	1004794	33.801	21.425 #
19) L4 AR-1242-4	0.000	5.015	0	1936456	N.D.	41.734 #
20) L4 AR-1242-5	6.502	5.518	3923260	617360	121.083	11.042 #
21) L5 AR-1248-1	5.571	4.712	631555	222070	15.007	4.315 #
22) L5 AR-1248-2	5.837	4.956	500152	663355	7.671	9.239
23) L5 AR-1248-3	6.055	5.015	559958	1936456	8.064	25.595 #
24) L5 AR-1248-4	6.445	5.192f	3577111	332005	55.970	3.722 #
25) L5 AR-1248-5	6.502	5.591f	3923260	217347	61.149	2.614 #
26) L6 AR-1254-1	6.445	5.518	3577111	617360	53.296	5.529 #
27) L6 AR-1254-2	6.653	5.673	297538	198049	3.145	1.984 #
28) L6 AR-1254-3	7.018	6.088	2518049	574934	27.644	3.675 #
29) L6 AR-1254-4	7.324	6.310	189594	405871	3.183	4.400 #
30) L6 AR-1254-5	7.742	6.721f	169022	1382887	2.462	9.553 #
31) L7 AR-1260-1	7.185	6.216	415209	110316	5.263	1.003 #
32) L7 AR-1260-2	7.464	6.399	1247601	448000	15.572	3.525 #
33) L7 AR-1260-3	7.791f	6.549f	283221	68575	4.971	0.559 #
34) L7 AR-1260-4	8.044	7.043	312272	489853	4.700	5.606
35) L7 AR-1260-5	8.354	7.277	142902	213679	1.331	1.157
36) L8 AR-1262-1	7.791f	6.824	283221	536391	3.289	8.442 #
37) L8 AR-1262-2	8.354	7.043	142902	489853	1.174	3.951 #
38) L8 AR-1262-3	8.686	7.555	23497	455107	0.270	4.850 #
39) L8 AR-1262-4	8.755f	7.655f	546045	200510	8.146	1.177 #
40) L8 AR-1262-5	9.442	8.112f	36648	501399	0.957	6.813 #
41) L9 AR-1268-1	8.676	7.555	72048	455107	0.463	1.729 #

Data Path : Z:\pestpcbsrv\HPCHEM1\ECD\_P\Data\PP060223\  
 Data File : PP058204.D  
 Signal(s) : Signal #1: ECD1A.ch Signal #2: ECD2B.ch  
 Acq On : 02 Jun 2023 19:45  
 Operator : YP\AJ  
 Sample : 03020-01 20X  
 Misc :  
 ALS Vial : 18 Sample Multiplier: 1

Instrument :  
 ECD\_P  
 ClientSampleId :

Integration File signal 1: autoint1.e  
 Integration File signal 2: autoint2.e  
 Quant Time: Jun 04 21:11:28 2023  
 Quant Method : Z:\pestpcbsrv\HPCHEM1\ECD\_P\methods\PP050823.M  
 Quant Title : GC EXTRACTABLES  
 QLast Update : Mon May 08 19:18:05 2023  
 Response via : Initial Calibration  
 Integrator: ChemStation

Volume Inj. : 2 µl  
 Signal #1 Phase : ZB-MR1 Signal #2 Phase: ZB-MR2  
 Signal #1 Info : 30Mx0.32mmx 0.50µ Signal #2 Info : 30M x 0.32mm x 0.25µm

	Compound	RT#1	RT#2	Resp#1	Resp#2	ng/ml	ng/ml
42)	L9 AR-1268-2	8.755f	7.655f	546045	200510	4.185	0.819 #
43)	L9 AR-1268-3	9.011	7.823f	158408	14016	1.227	0.069 #
44)	L9 AR-1268-4	9.442	8.112f	36648	501399	0.865	6.054 #
45)	L9 AR-1268-5	9.876	8.426	-13602	176740	N.D.	0.342 #

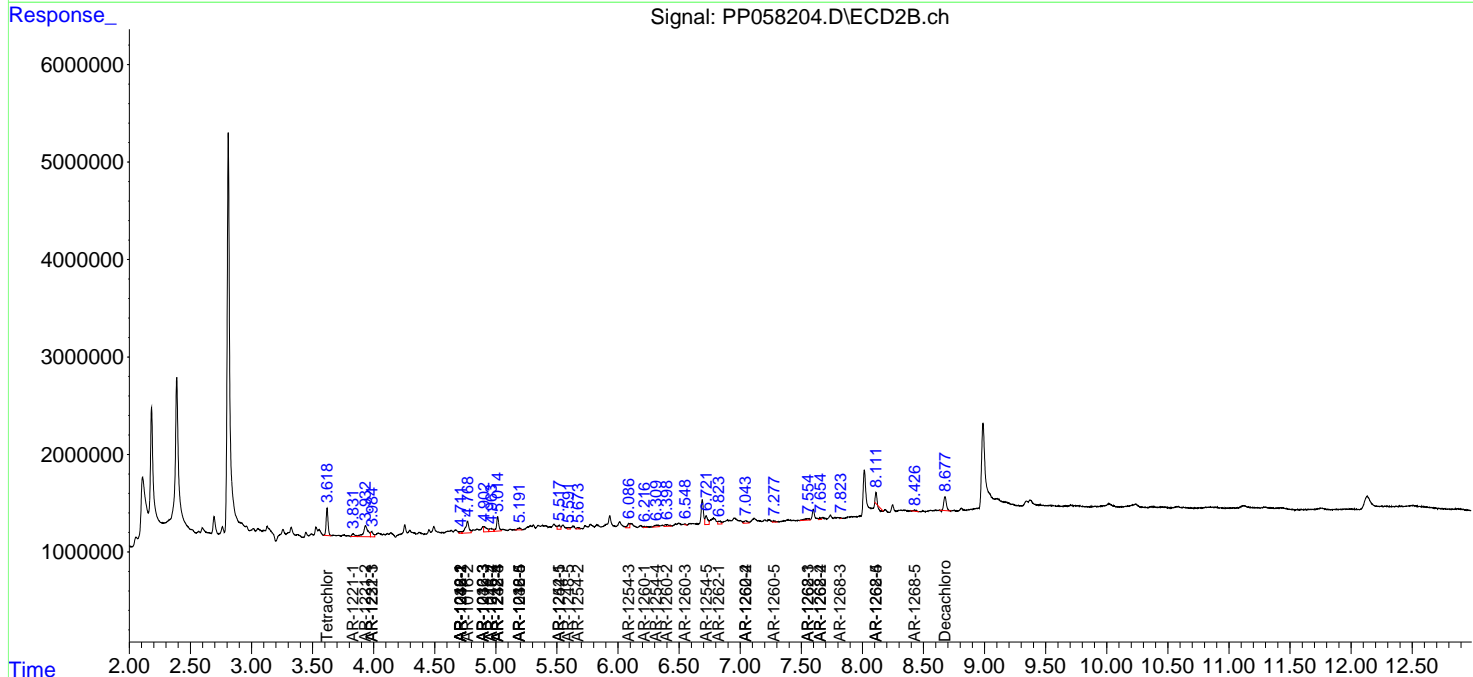
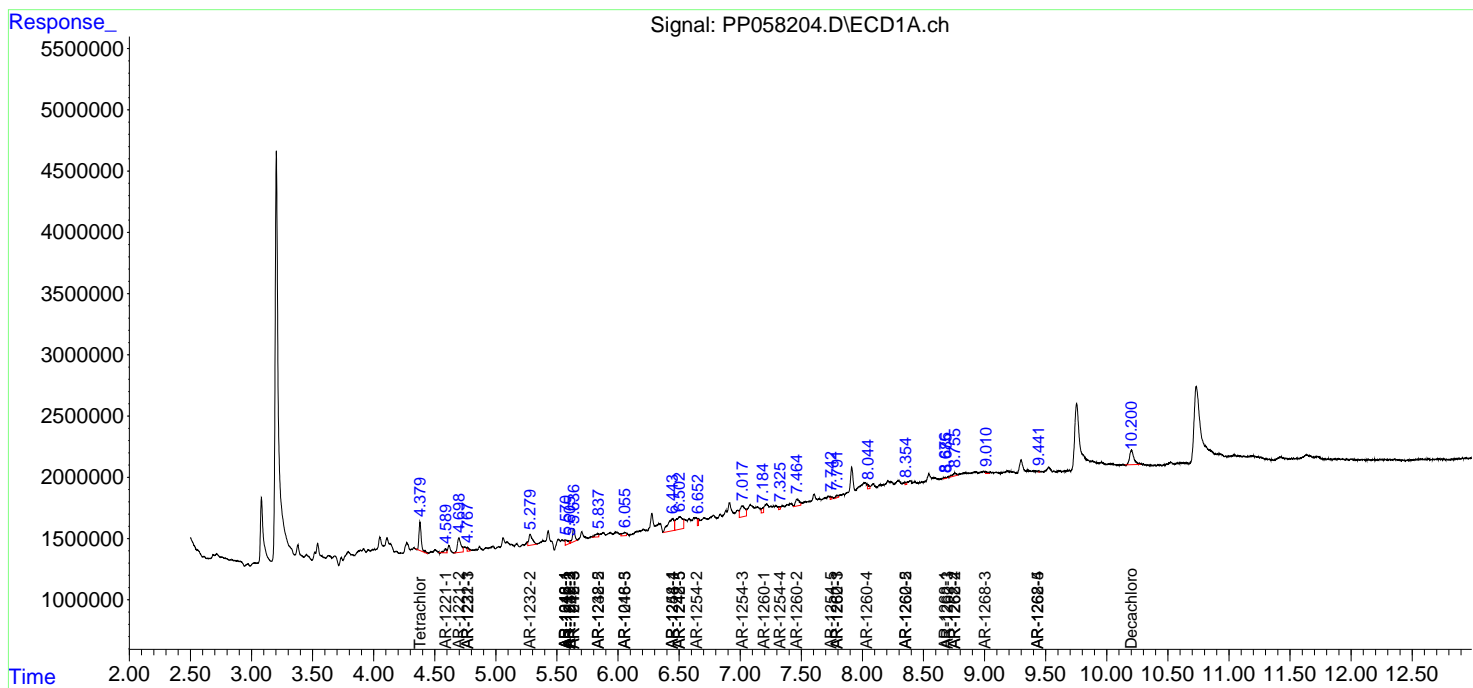
(f)=RT Delta > 1/2 Window (#)=Amounts differ by > 25% (m)=manual int.

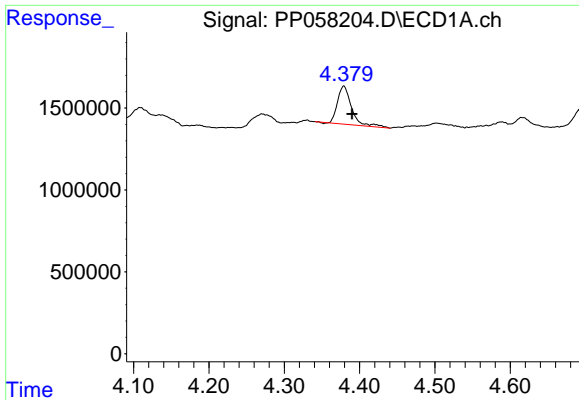
Data Path : Z:\pestpcbsrv\HPCHEM1\ECD\_P\Data\PP060223\  
 Data File : PP058204.D  
 Signal(s) : Signal #1: ECD1A.ch Signal #2: ECD2B.ch  
 Acq On : 02 Jun 2023 19:45  
 Operator : YP\AJ  
 Sample : 03020-01 20X  
 Misc :  
 ALS Vial : 18 Sample Multiplier: 1

Instrument :  
 ECD\_P  
 ClientSampleId :

Integration File signal 1: autoint1.e  
 Integration File signal 2: autoint2.e  
 Quant Time: Jun 04 21:11:28 2023  
 Quant Method : Z:\pestpcbsrv\HPCHEM1\ECD\_P\methods\PP050823.M  
 Quant Title : GC EXTRACTABLES  
 QLast Update : Mon May 08 19:18:05 2023  
 Response via : Initial Calibration  
 Integrator: ChemStation

Volume Inj. : 2 µl  
 Signal #1 Phase : ZB-MR1 Signal #2 Phase: ZB-MR2  
 Signal #1 Info : 30Mx0.32mmx 0.50µ Signal #2 Info : 30M x 0.32mm x 0.25µm

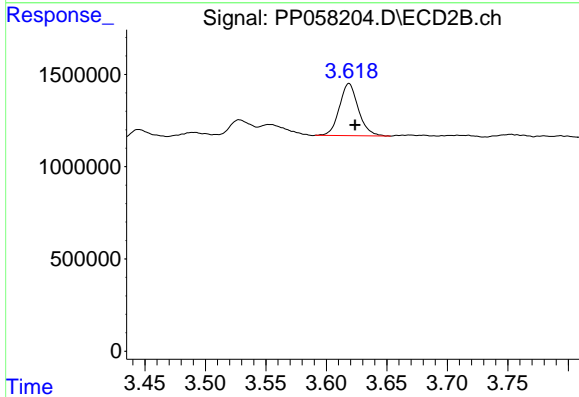




#1 Tetrachloro-m-xylene

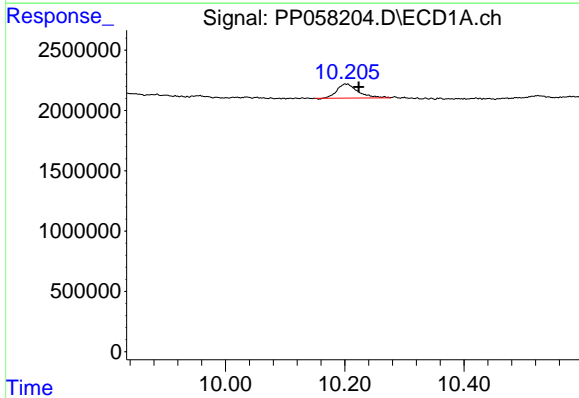
R.T.: 4.379 min  
 Delta R.T.: -0.011 min  
 Response: 3024402  
 Conc: 1.38 ng/ml

Instrument :  
 ECD\_P  
 ClientSampleId :



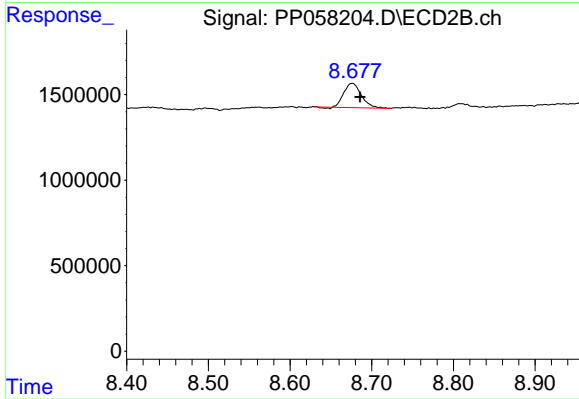
#1 Tetrachloro-m-xylene

R.T.: 3.619 min  
 Delta R.T.: -0.005 min  
 Response: 3086163  
 Conc: 1.36 ng/ml



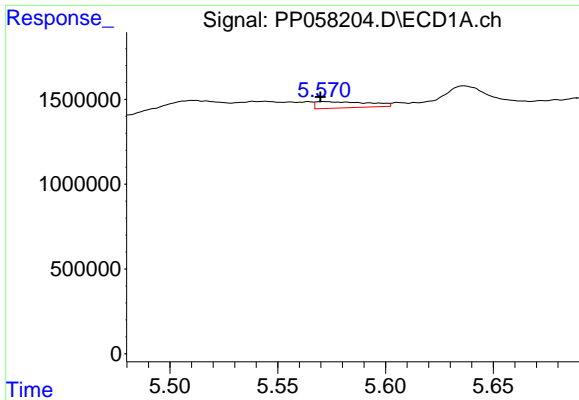
#2 Decachlorobiphenyl

R.T.: 10.202 min  
 Delta R.T.: -0.021 min  
 Response: 2853008  
 Conc: 2.52 ng/ml



#2 Decachlorobiphenyl

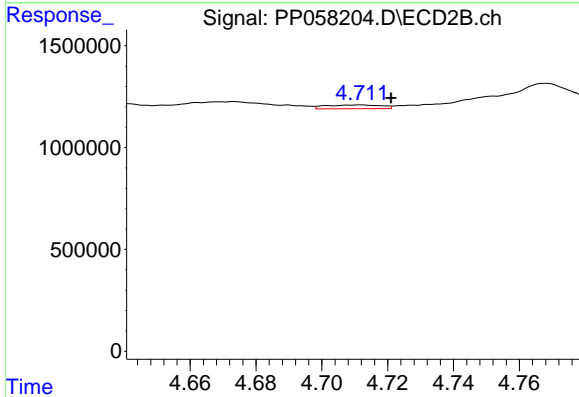
R.T.: 8.676 min  
 Delta R.T.: -0.010 min  
 Response: 2108833  
 Conc: 1.34 ng/ml



#3 AR-1016-1

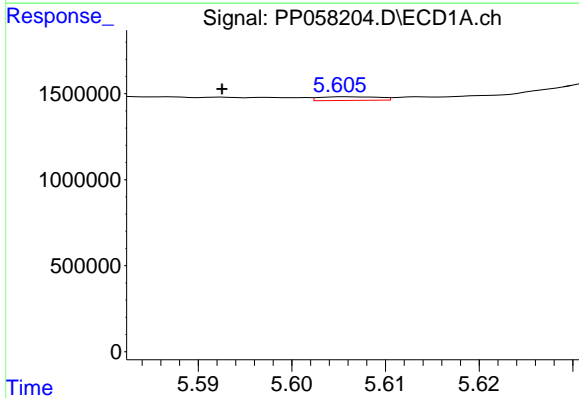
R.T.: 5.571 min  
 Delta R.T.: 0.002 min  
 Response: 631555  
 Conc: 10.14 ng/ml

Instrument :  
 ECD\_P  
 ClientSampleId :



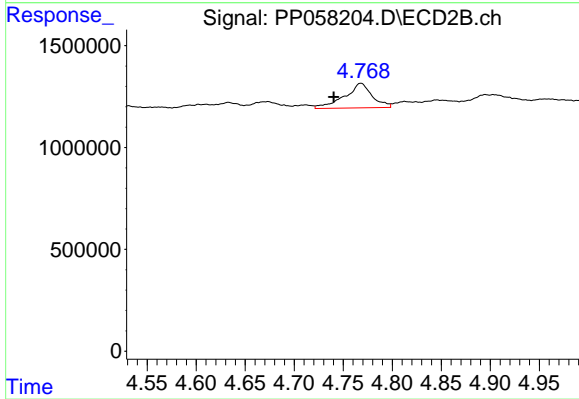
#3 AR-1016-1

R.T.: 4.712 min  
 Delta R.T.: -0.009 min  
 Response: 222070  
 Conc: 2.98 ng/ml



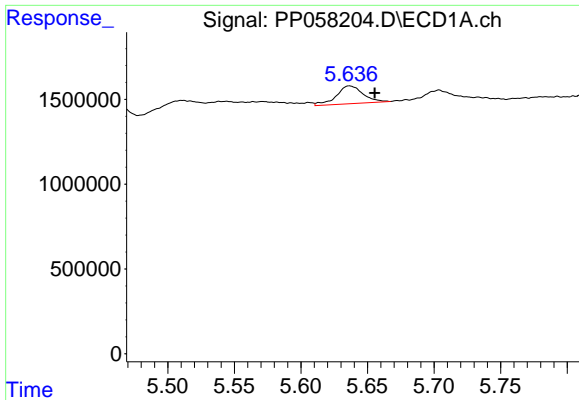
#4 AR-1016-2

R.T.: 5.606 min  
 Delta R.T.: 0.014 min  
 Response: 91487  
 Conc: 1.02 ng/ml



#4 AR-1016-2

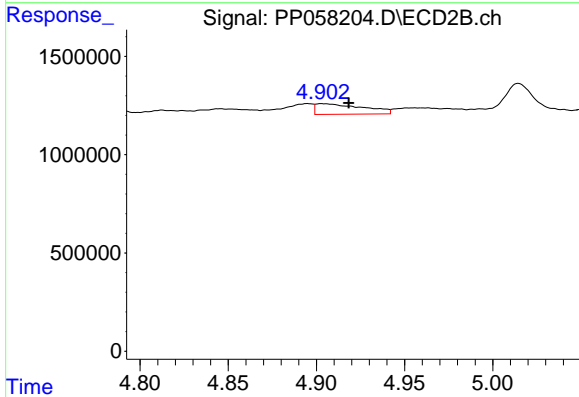
R.T.: 4.768 min  
 Delta R.T.: 0.028 min  
 Response: 2351506  
 Conc: 22.75 ng/ml



#5 AR-1016-3

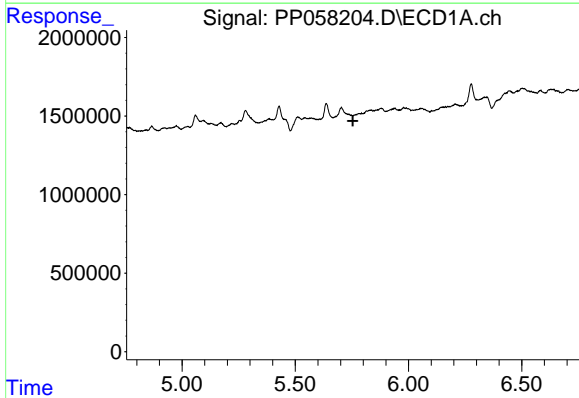
R.T.: 5.636 min  
 Delta R.T.: -0.019 min  
 Response: 1471719  
 Conc: 26.03 ng/ml

Instrument :  
 ECD\_P  
 ClientSampleId :



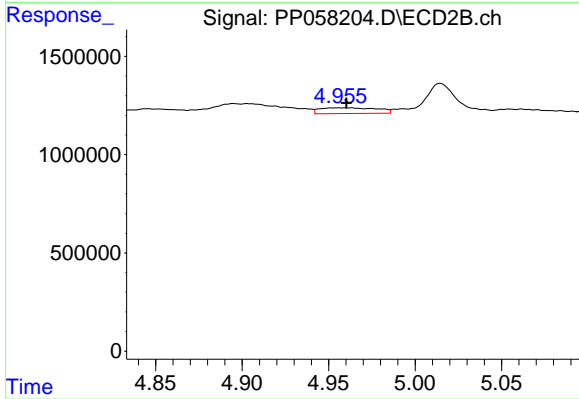
#5 AR-1016-3

R.T.: 4.903 min  
 Delta R.T.: -0.015 min  
 Response: 1004794  
 Conc: 17.04 ng/ml



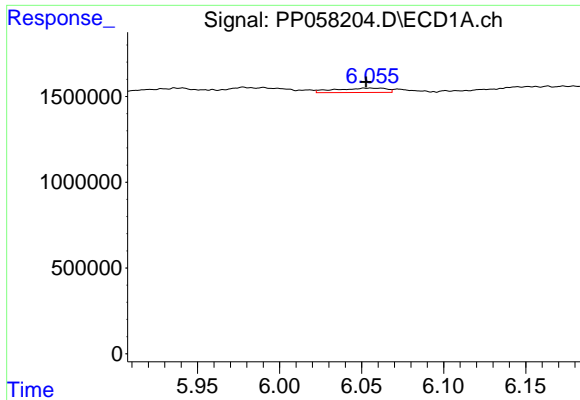
#6 AR-1016-4

R.T.: 5.784 min  
 Delta R.T.: 0.029 min  
 Response: -20175  
 Conc: N.D.



#6 AR-1016-4

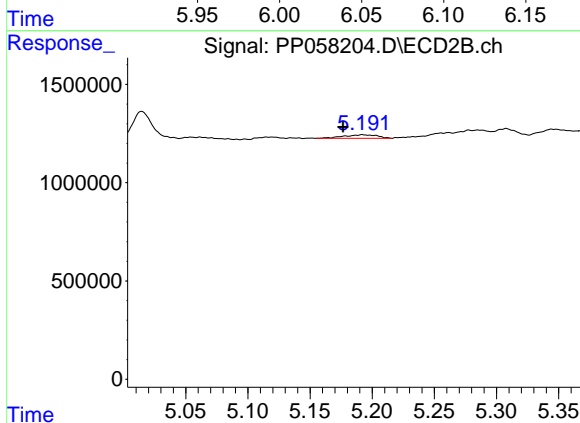
R.T.: 4.956 min  
 Delta R.T.: -0.005 min  
 Response: 663355  
 Conc: 14.10 ng/ml



#7 AR-1016-5

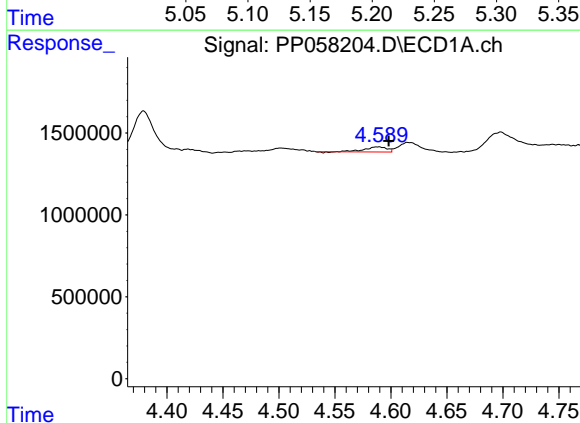
R.T.: 6.055 min  
 Delta R.T.: 0.003 min  
 Response: 559958  
 Conc: 12.01 ng/ml

Instrument :  
 ECD\_P  
 ClientSampleId :



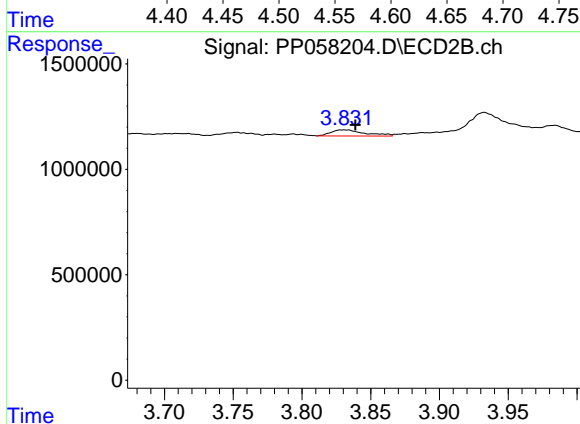
#7 AR-1016-5

R.T.: 5.192 min  
 Delta R.T.: 0.016 min  
 Response: 332005  
 Conc: 5.59 ng/ml



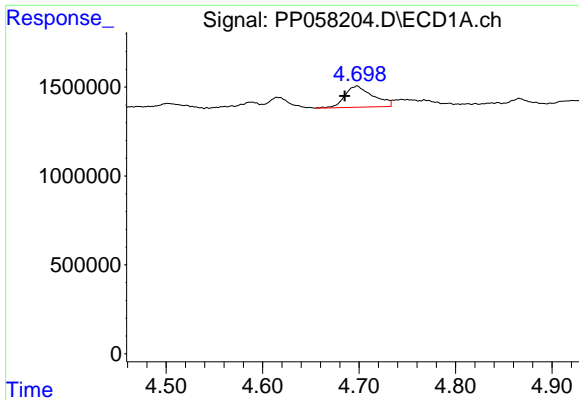
#8 AR-1221-1

R.T.: 4.588 min  
 Delta R.T.: -0.010 min  
 Response: 440192  
 Conc: 15.21 ng/ml



#8 AR-1221-1

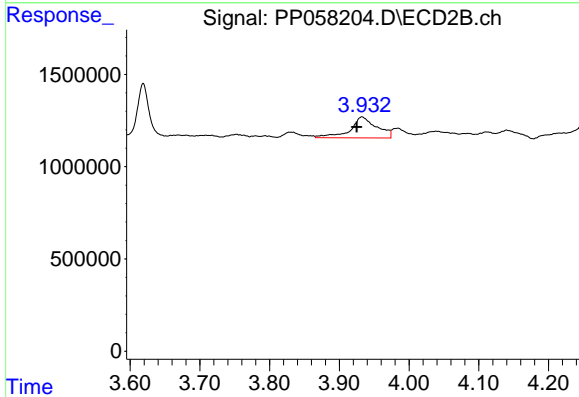
R.T.: 3.831 min  
 Delta R.T.: -0.008 min  
 Response: 503801  
 Conc: 17.08 ng/ml



#9 AR-1221-2

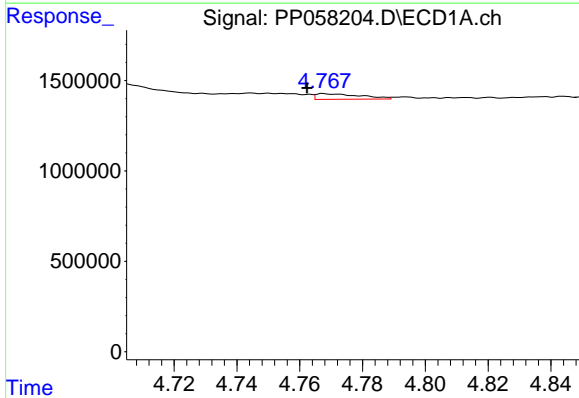
R.T.: 4.698 min  
 Delta R.T.: 0.013 min  
 Response: 2405198  
 Conc: 110.97 ng/ml

Instrument :  
 ECD\_P  
 ClientSampleId :



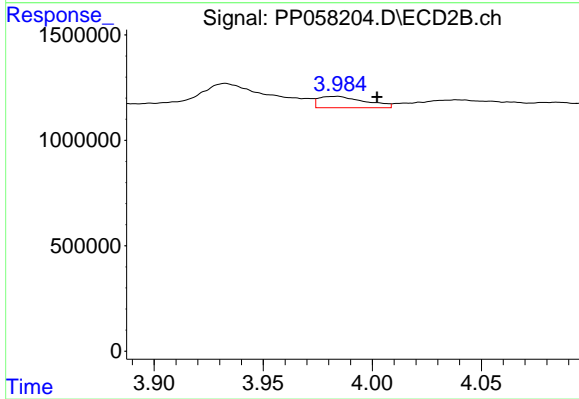
#9 AR-1221-2

R.T.: 3.933 min  
 Delta R.T.: 0.008 min  
 Response: 3002837  
 Conc: 134.81 ng/ml



#10 AR-1221-3

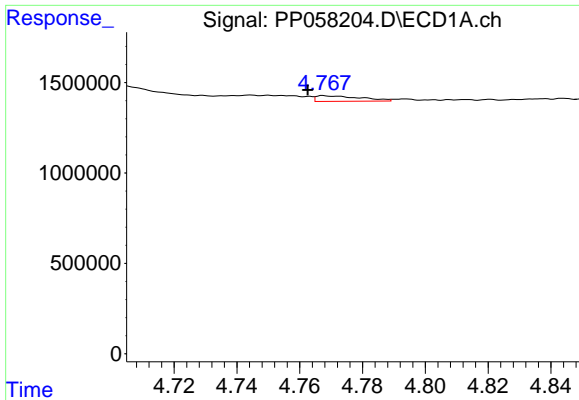
R.T.: 4.768 min  
 Delta R.T.: 0.005 min  
 Response: 301328  
 Conc: 5.00 ng/ml



#10 AR-1221-3

R.T.: 3.984 min  
 Delta R.T.: -0.018 min  
 Response: 793237  
 Conc: 12.45 ng/ml

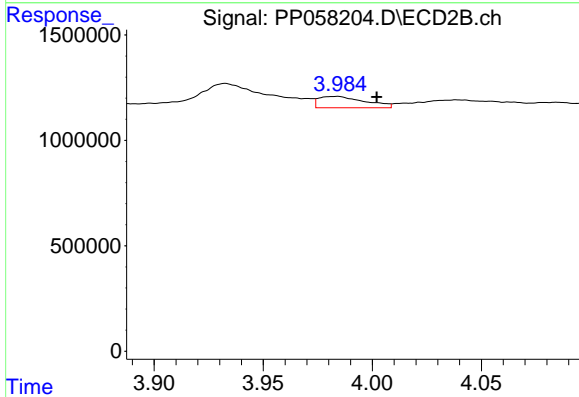




#11 AR-1232-1

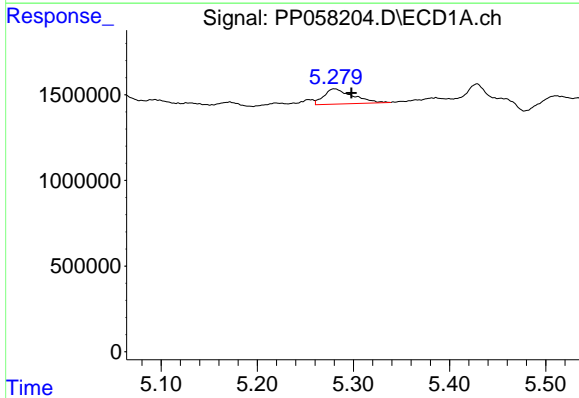
R.T.: 4.768 min  
 Delta R.T.: 0.005 min  
 Response: 301328  
 Conc: 6.88 ng/ml

Instrument :  
 ECD\_P  
 ClientSampleId :



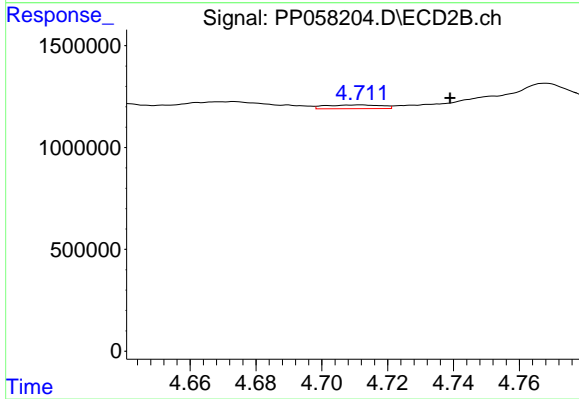
#11 AR-1232-1

R.T.: 3.984 min  
 Delta R.T.: -0.018 min  
 Response: 793237  
 Conc: 17.19 ng/ml



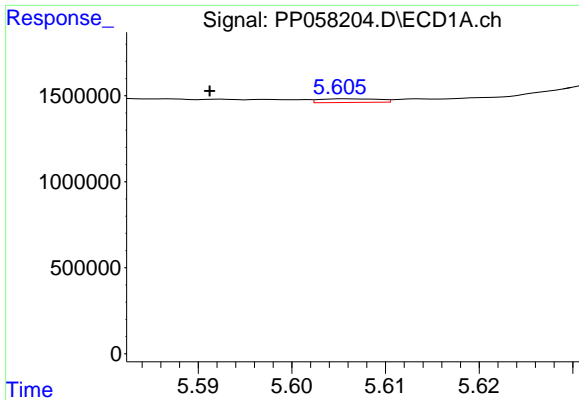
#12 AR-1232-2

R.T.: 5.280 min  
 Delta R.T.: -0.018 min  
 Response: 1866402  
 Conc: 71.57 ng/ml



#12 AR-1232-2

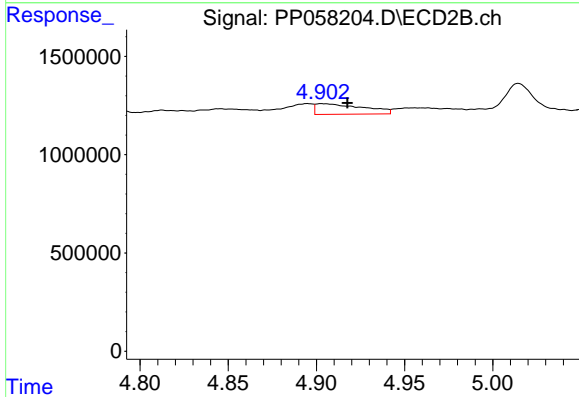
R.T.: 4.712 min  
 Delta R.T.: -0.027 min  
 Response: 222070  
 Conc: 4.69 ng/ml



#13 AR-1232-3

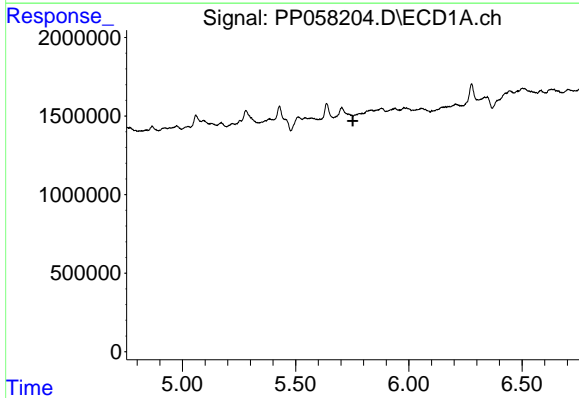
R.T.: 5.606 min  
 Delta R.T.: 0.015 min  
 Response: 91487  
 Conc: 2.24 ng/ml

Instrument :  
 ECD\_P  
 ClientSampleId :



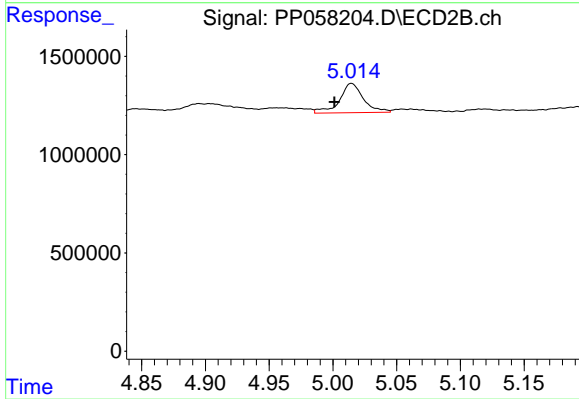
#13 AR-1232-3

R.T.: 4.903 min  
 Delta R.T.: -0.014 min  
 Response: 1004794  
 Conc: 36.92 ng/ml



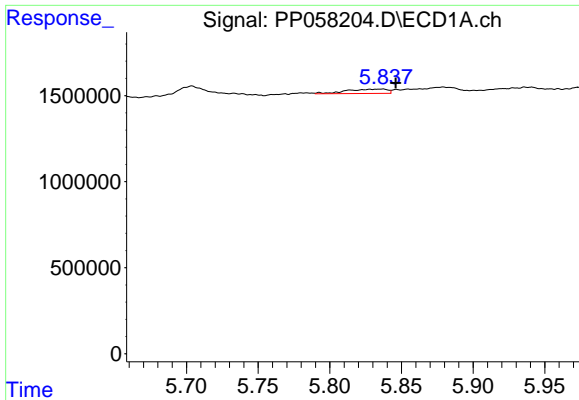
#14 AR-1232-4

R.T.: 0.000 min  
 Exp R.T. : 5.753 min  
 Response: 0  
 Conc: N.D.



#14 AR-1232-4

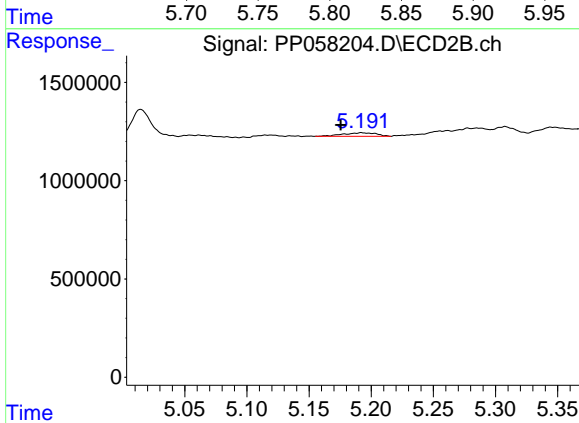
R.T.: 5.015 min  
 Delta R.T.: 0.013 min  
 Response: 1936456  
 Conc: 79.43 ng/ml



#15 AR-1232-5

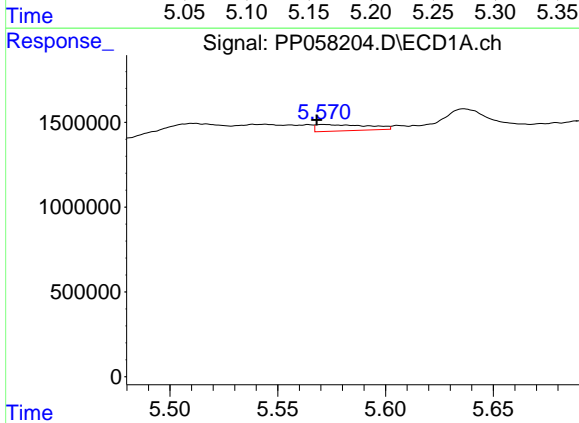
R.T.: 5.837 min  
 Delta R.T.: -0.009 min  
 Response: 500152  
 Conc: 27.39 ng/ml

Instrument :  
 ECD\_P  
 ClientSampleId :



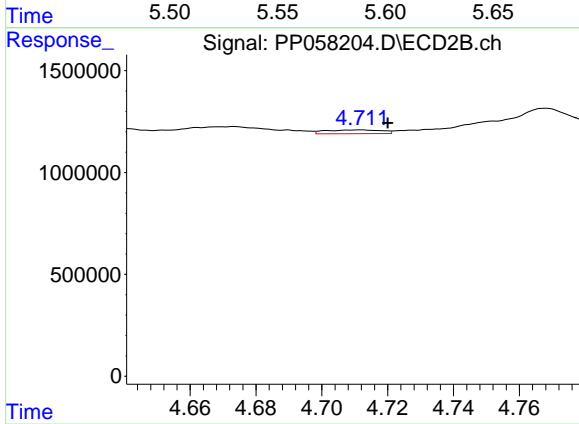
#15 AR-1232-5

R.T.: 5.192 min  
 Delta R.T.: 0.017 min  
 Response: 332005  
 Conc: 12.01 ng/ml



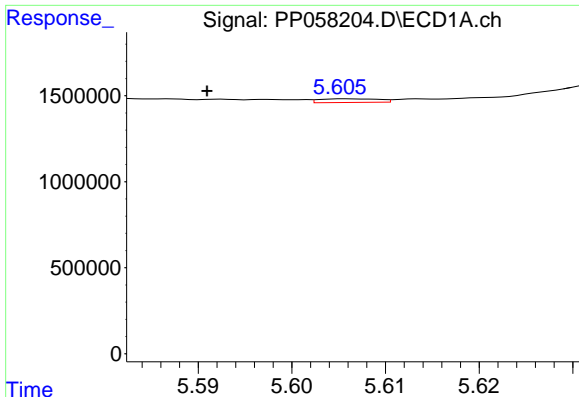
#16 AR-1242-1

R.T.: 5.571 min  
 Delta R.T.: 0.003 min  
 Response: 631555  
 Conc: 13.26 ng/ml



#16 AR-1242-1

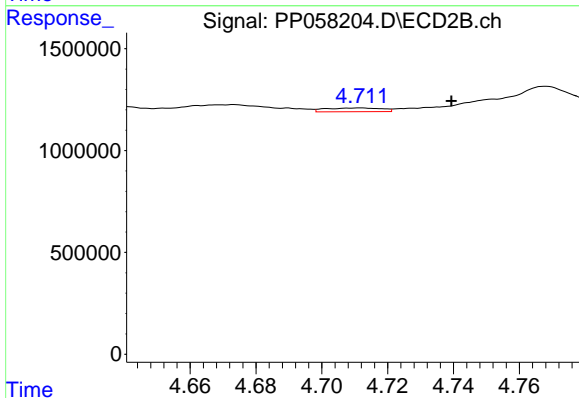
R.T.: 4.712 min  
 Delta R.T.: -0.008 min  
 Response: 222070  
 Conc: 3.81 ng/ml



#17 AR-1242-2

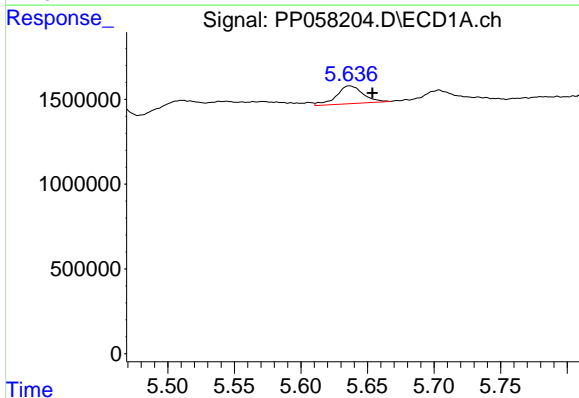
R.T.: 5.606 min  
 Delta R.T.: 0.015 min  
 Response: 91487  
 Conc: 1.34 ng/ml

Instrument :  
 ECD\_P  
 ClientSampleId :



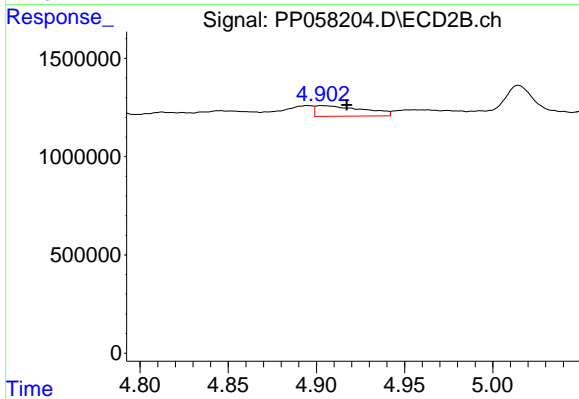
#17 AR-1242-2

R.T.: 4.712 min  
 Delta R.T.: -0.028 min  
 Response: 222070  
 Conc: 2.78 ng/ml



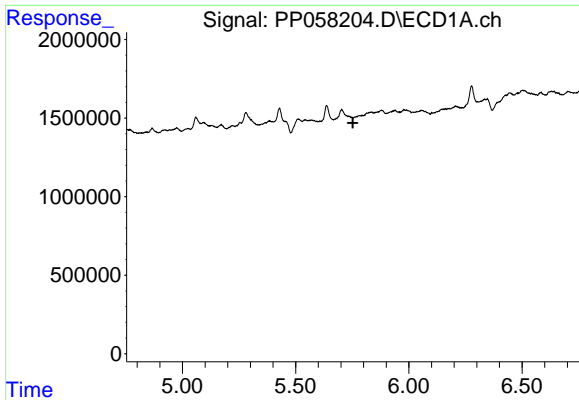
#18 AR-1242-3

R.T.: 5.636 min  
 Delta R.T.: -0.017 min  
 Response: 1471719  
 Conc: 33.80 ng/ml



#18 AR-1242-3

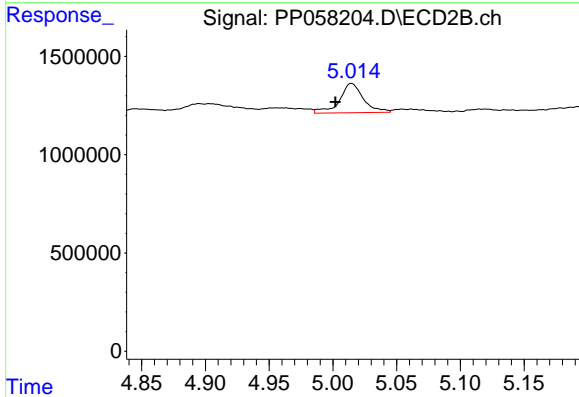
R.T.: 4.903 min  
 Delta R.T.: -0.014 min  
 Response: 1004794  
 Conc: 21.43 ng/ml



#19 AR-1242-4

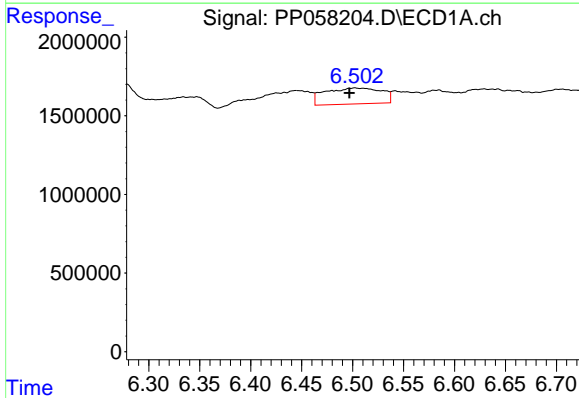
R.T.: 0.000 min  
 Exp R.T.: 5.753 min  
 Response: 0  
 Conc: N.D.

Instrument :  
 ECD\_P  
 ClientSampleId :



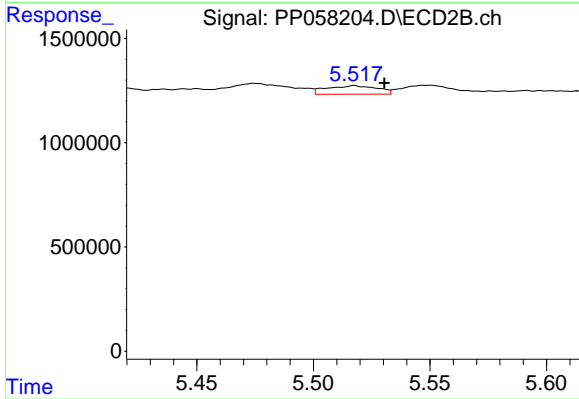
#19 AR-1242-4

R.T.: 5.015 min  
 Delta R.T.: 0.013 min  
 Response: 1936456  
 Conc: 41.73 ng/ml



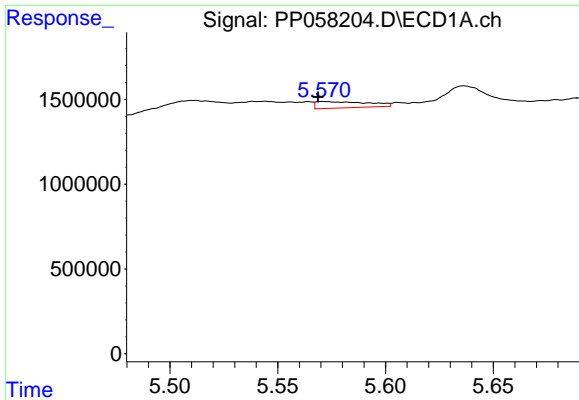
#20 AR-1242-5

R.T.: 6.502 min  
 Delta R.T.: 0.005 min  
 Response: 3923260  
 Conc: 121.08 ng/ml



#20 AR-1242-5

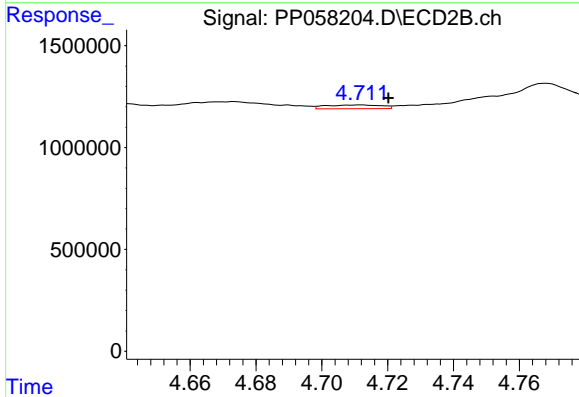
R.T.: 5.518 min  
 Delta R.T.: -0.013 min  
 Response: 617360  
 Conc: 11.04 ng/ml



#21 AR-1248-1

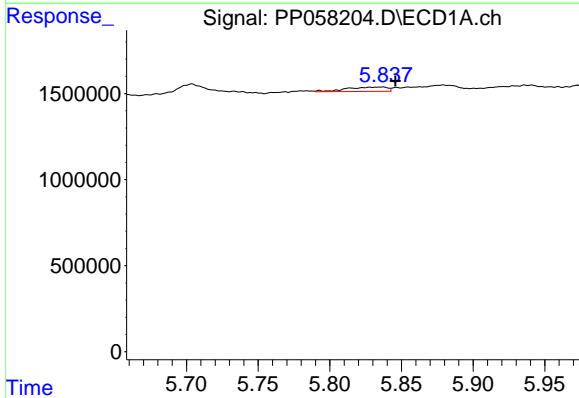
R.T.: 5.571 min  
 Delta R.T.: 0.003 min  
 Response: 631555  
 Conc: 15.01 ng/ml

Instrument :  
 ECD\_P  
 ClientSampleId :



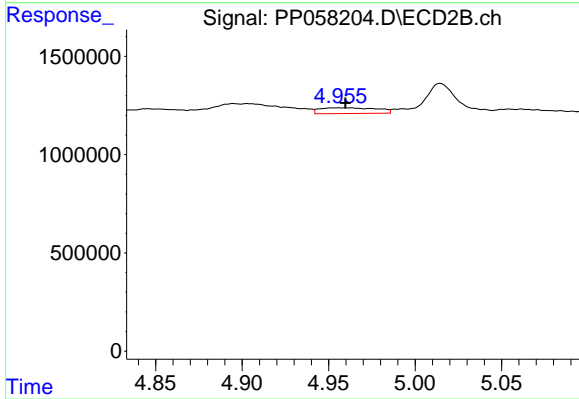
#21 AR-1248-1

R.T.: 4.712 min  
 Delta R.T.: -0.009 min  
 Response: 222070  
 Conc: 4.32 ng/ml



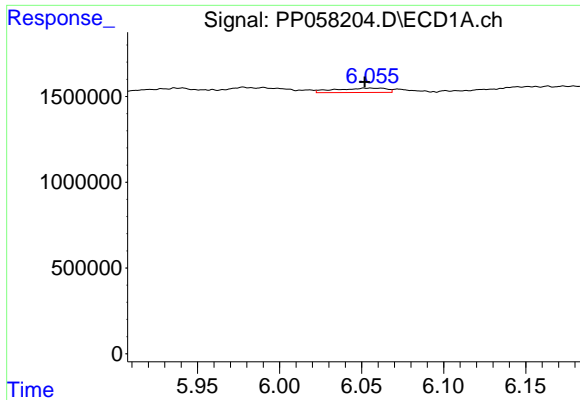
#22 AR-1248-2

R.T.: 5.837 min  
 Delta R.T.: -0.009 min  
 Response: 500152  
 Conc: 7.67 ng/ml



#22 AR-1248-2

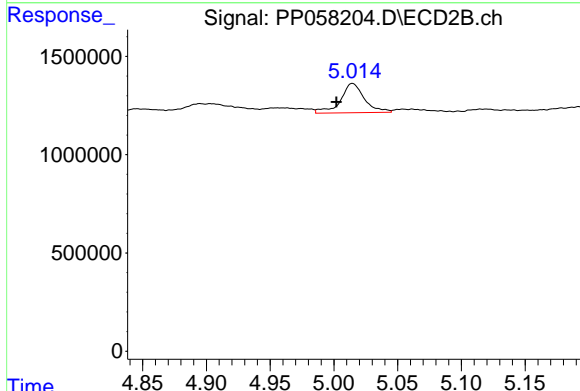
R.T.: 4.956 min  
 Delta R.T.: -0.004 min  
 Response: 663355  
 Conc: 9.24 ng/ml



#23 AR-1248-3

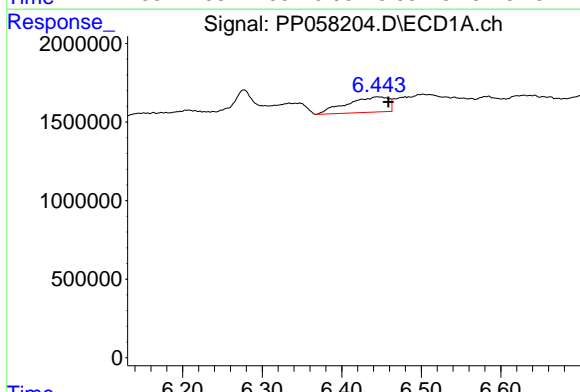
R.T.: 6.055 min  
 Delta R.T.: 0.004 min  
 Response: 559958  
 Conc: 8.06 ng/ml

Instrument :  
 ECD\_P  
 ClientSampleId :



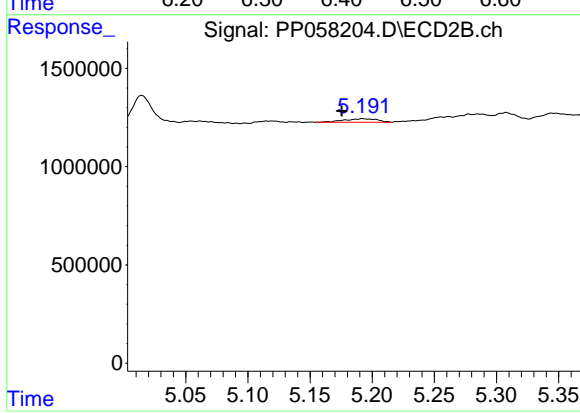
#23 AR-1248-3

R.T.: 5.015 min  
 Delta R.T.: 0.013 min  
 Response: 1936456  
 Conc: 25.59 ng/ml



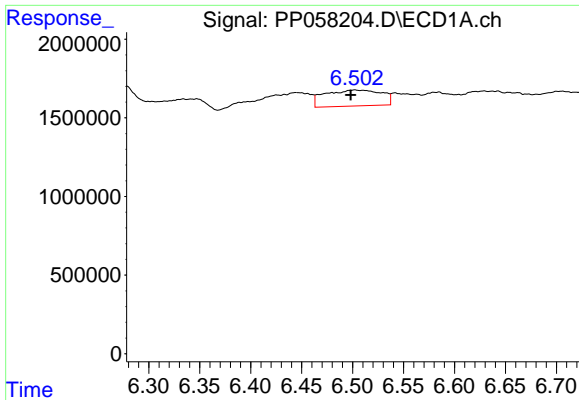
#24 AR-1248-4

R.T.: 6.445 min  
 Delta R.T.: -0.014 min  
 Response: 3577111  
 Conc: 55.97 ng/ml



#24 AR-1248-4

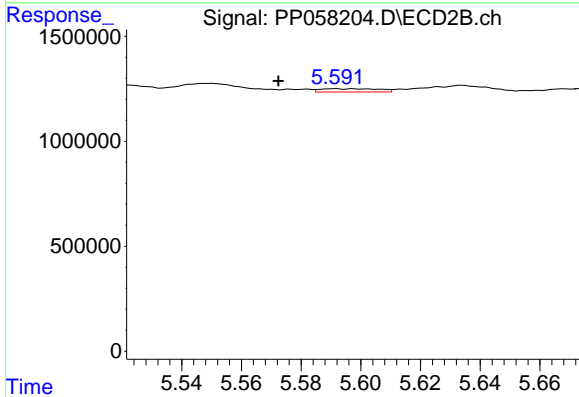
R.T.: 5.192 min  
 Delta R.T.: 0.017 min  
 Response: 332005  
 Conc: 3.72 ng/ml



#25 AR-1248-5

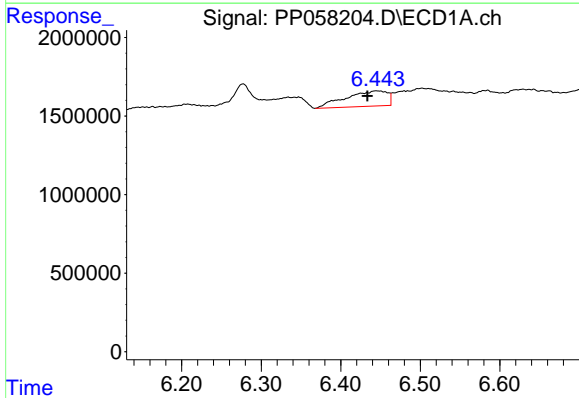
R.T.: 6.502 min  
 Delta R.T.: 0.004 min  
 Response: 3923260  
 Conc: 61.15 ng/ml

Instrument :  
 ECD\_P  
 ClientSampleId :



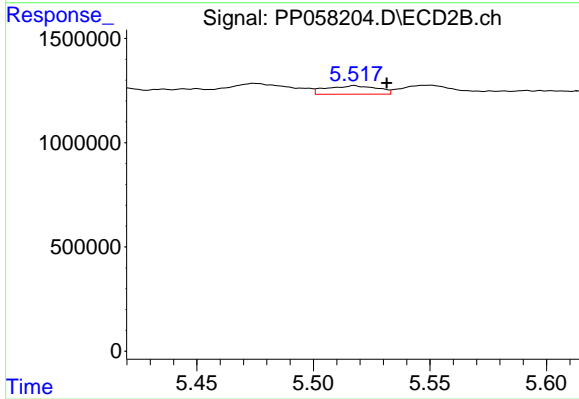
#25 AR-1248-5

R.T.: 5.591 min  
 Delta R.T.: 0.019 min  
 Response: 217347  
 Conc: 2.61 ng/ml



#26 AR-1254-1

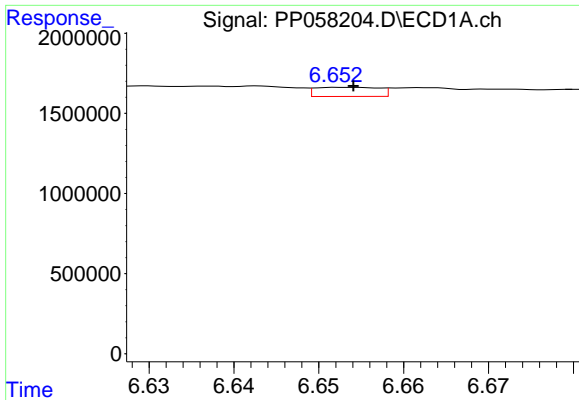
R.T.: 6.445 min  
 Delta R.T.: 0.011 min  
 Response: 3577111  
 Conc: 53.30 ng/ml



#26 AR-1254-1

R.T.: 5.518 min  
 Delta R.T.: -0.014 min  
 Response: 617360  
 Conc: 5.53 ng/ml

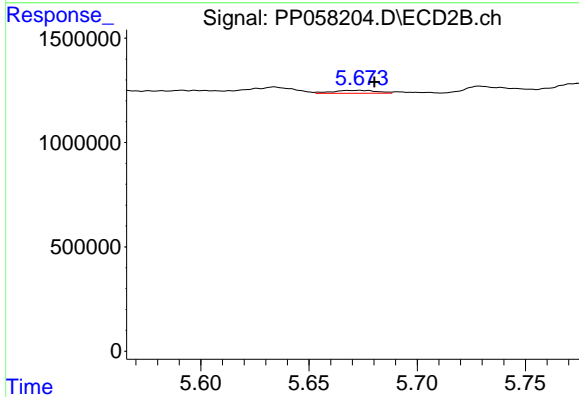




#27 AR-1254-2

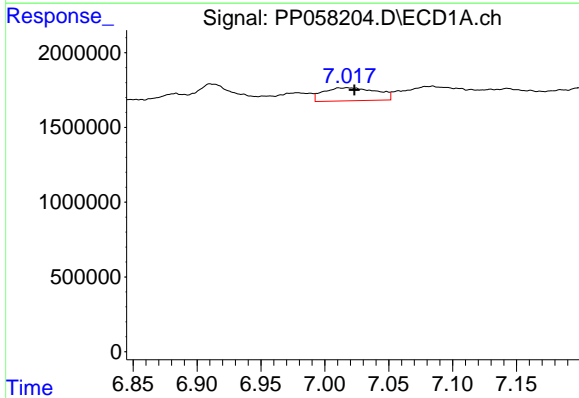
R.T.: 6.653 min  
 Delta R.T.: 0.000 min  
 Response: 297538  
 Conc: 3.15 ng/ml

Instrument :  
 ECD\_P  
 ClientSampleId :



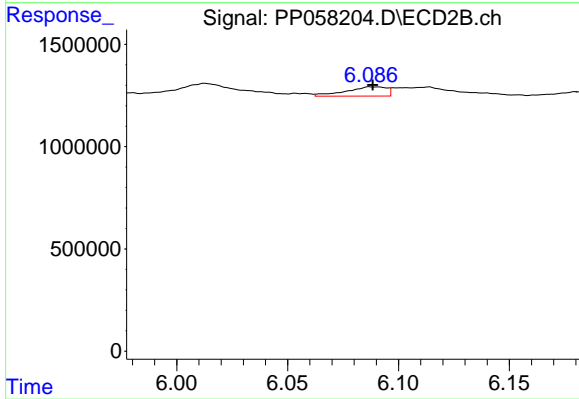
#27 AR-1254-2

R.T.: 5.673 min  
 Delta R.T.: -0.007 min  
 Response: 198049  
 Conc: 1.98 ng/ml



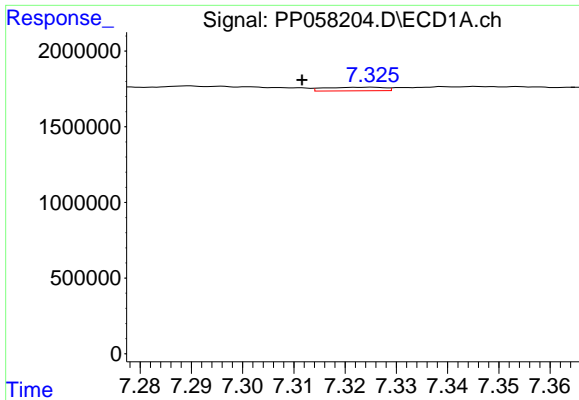
#28 AR-1254-3

R.T.: 7.018 min  
 Delta R.T.: -0.006 min  
 Response: 2518049  
 Conc: 27.64 ng/ml



#28 AR-1254-3

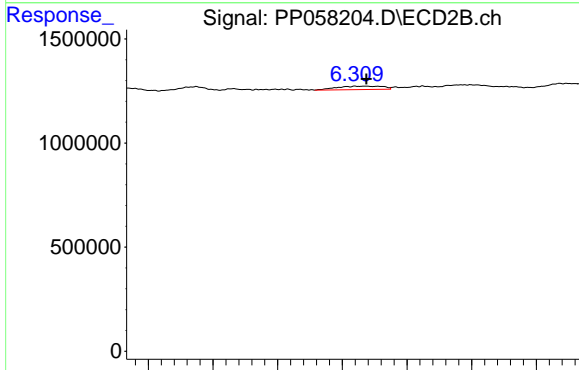
R.T.: 6.088 min  
 Delta R.T.: 0.000 min  
 Response: 574934  
 Conc: 3.67 ng/ml



#29 AR-1254-4

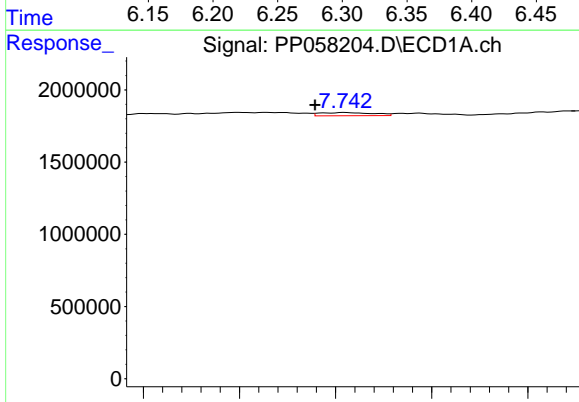
R.T.: 7.324 min  
 Delta R.T.: 0.013 min  
 Response: 189594  
 Conc: 3.18 ng/ml

Instrument :  
 ECD\_P  
 ClientSampleId :



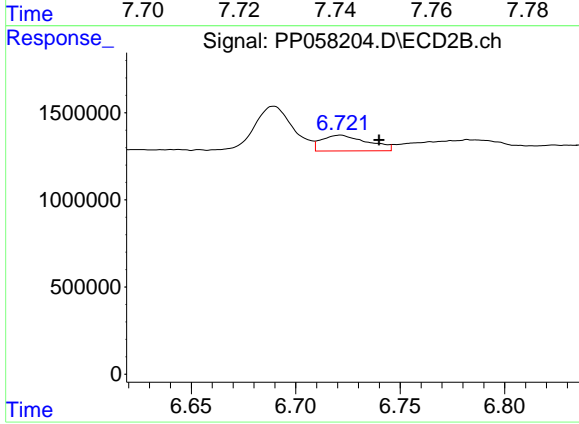
#29 AR-1254-4

R.T.: 6.310 min  
 Delta R.T.: -0.008 min  
 Response: 405871  
 Conc: 4.40 ng/ml



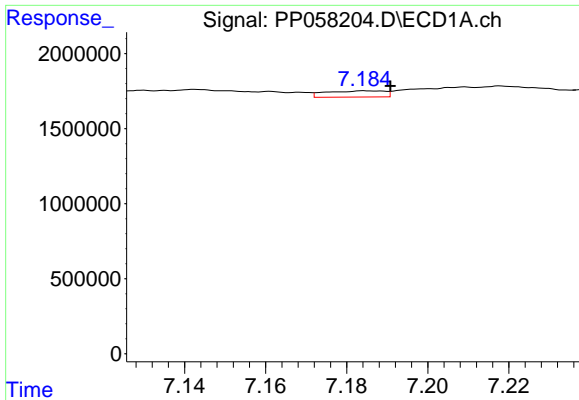
#30 AR-1254-5

R.T.: 7.742 min  
 Delta R.T.: 0.006 min  
 Response: 169022  
 Conc: 2.46 ng/ml



#30 AR-1254-5

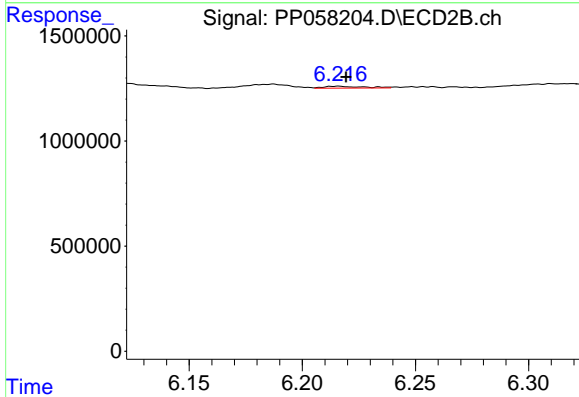
R.T.: 6.721 min  
 Delta R.T.: -0.019 min  
 Response: 1382887  
 Conc: 9.55 ng/ml



#31 AR-1260-1

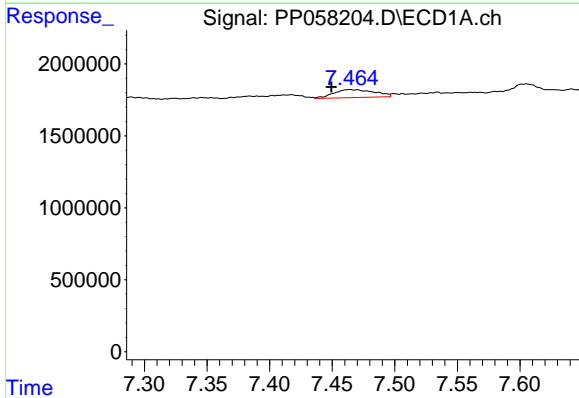
R.T.: 7.185 min  
 Delta R.T.: -0.006 min  
 Response: 415209  
 Conc: 5.26 ng/ml

Instrument :  
 ECD\_P  
 ClientSampleId :



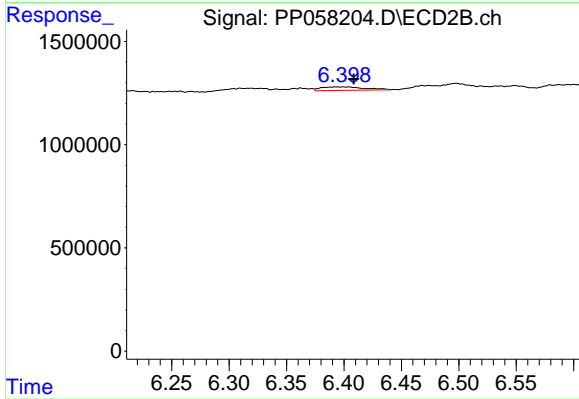
#31 AR-1260-1

R.T.: 6.216 min  
 Delta R.T.: -0.004 min  
 Response: 110316  
 Conc: 1.00 ng/ml



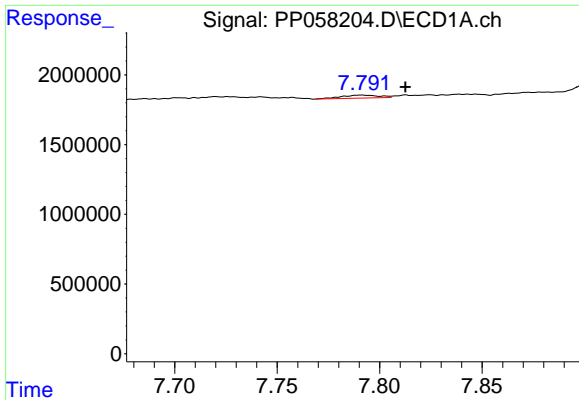
#32 AR-1260-2

R.T.: 7.464 min  
 Delta R.T.: 0.015 min  
 Response: 1247601  
 Conc: 15.57 ng/ml



#32 AR-1260-2

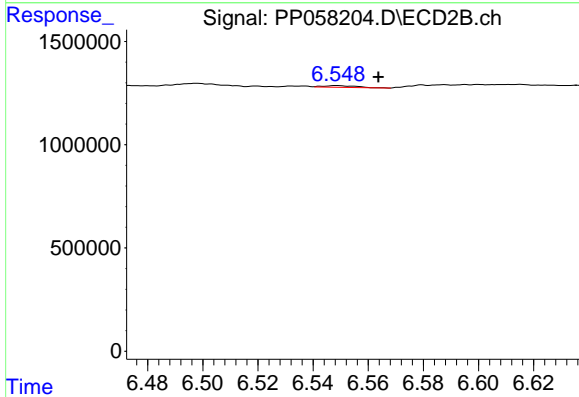
R.T.: 6.399 min  
 Delta R.T.: -0.009 min  
 Response: 448000  
 Conc: 3.52 ng/ml



#33 AR-1260-3

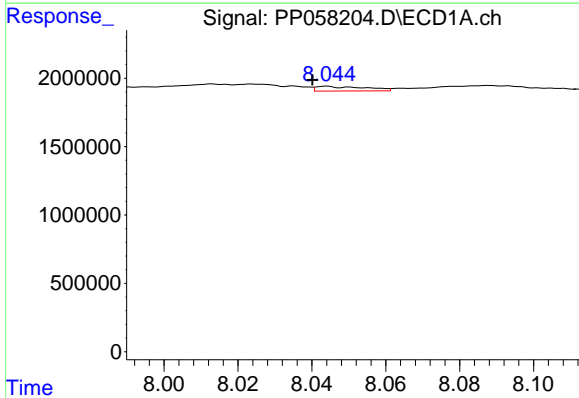
R.T.: 7.791 min  
 Delta R.T.: -0.021 min  
 Response: 283221  
 Conc: 4.97 ng/ml

Instrument :  
 ECD\_P  
 ClientSampleId :



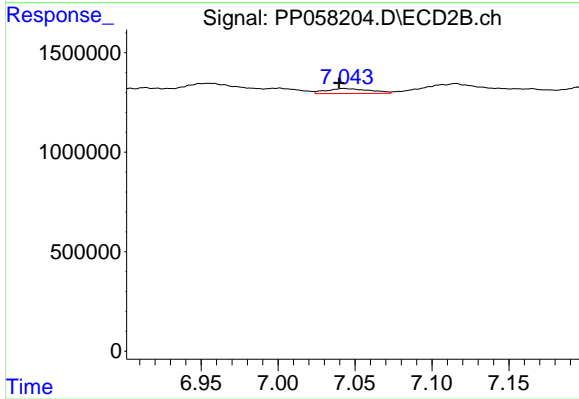
#33 AR-1260-3

R.T.: 6.549 min  
 Delta R.T.: -0.015 min  
 Response: 68575  
 Conc: 0.56 ng/ml



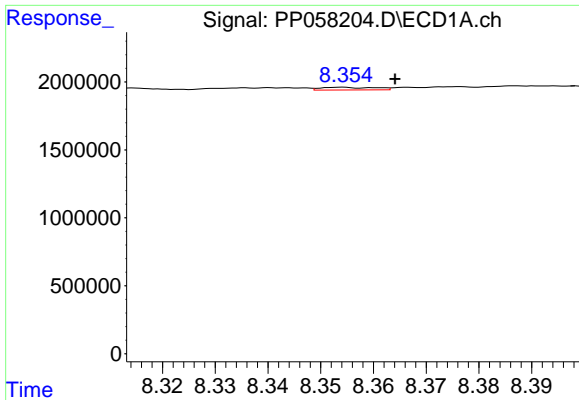
#34 AR-1260-4

R.T.: 8.044 min  
 Delta R.T.: 0.004 min  
 Response: 312272  
 Conc: 4.70 ng/ml



#34 AR-1260-4

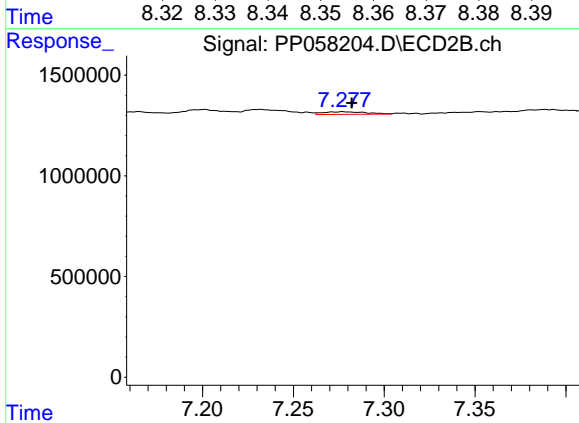
R.T.: 7.043 min  
 Delta R.T.: 0.003 min  
 Response: 489853  
 Conc: 5.61 ng/ml



#35 AR-1260-5

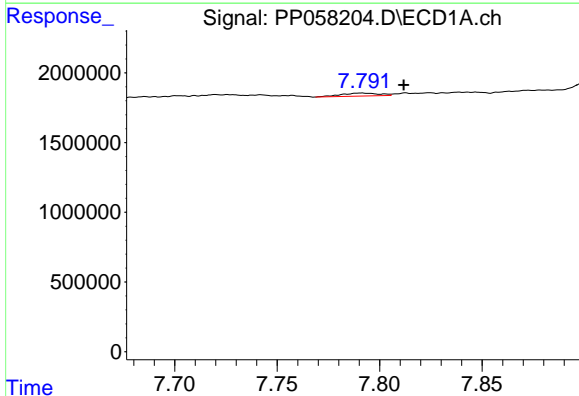
R.T.: 8.354 min  
 Delta R.T.: -0.010 min  
 Response: 142902  
 Conc: 1.33 ng/ml

Instrument :  
 ECD\_P  
 ClientSampleId :



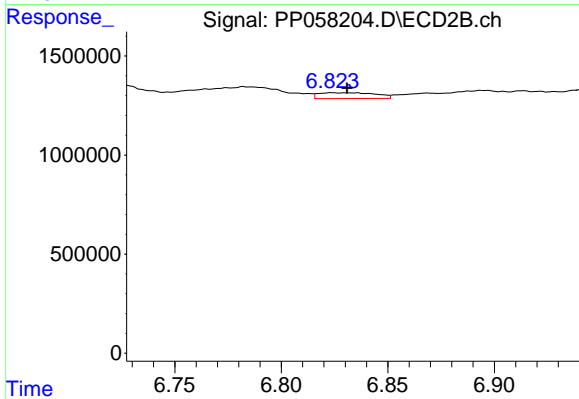
#35 AR-1260-5

R.T.: 7.277 min  
 Delta R.T.: -0.005 min  
 Response: 213679  
 Conc: 1.16 ng/ml



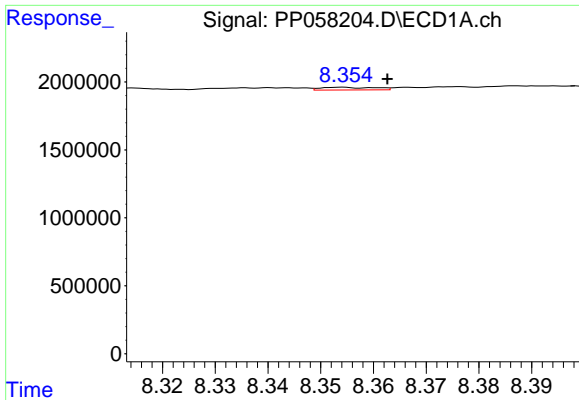
#36 AR-1262-1

R.T.: 7.791 min  
 Delta R.T.: -0.021 min  
 Response: 283221  
 Conc: 3.29 ng/ml



#36 AR-1262-1

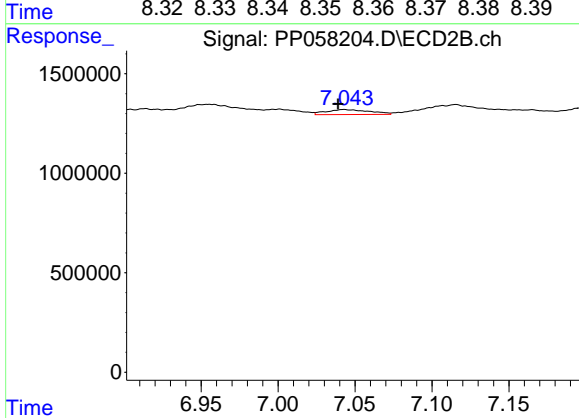
R.T.: 6.824 min  
 Delta R.T.: -0.007 min  
 Response: 536391  
 Conc: 8.44 ng/ml



#37 AR-1262-2

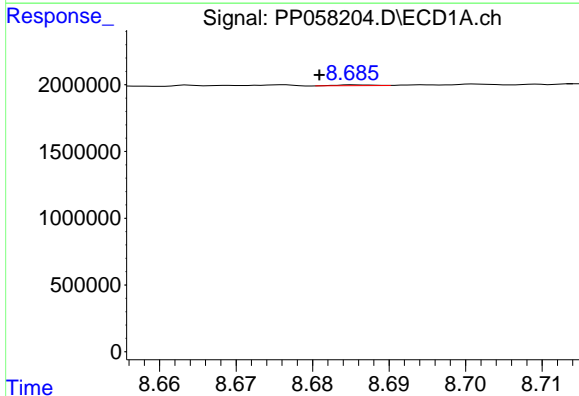
R.T.: 8.354 min  
 Delta R.T.: -0.009 min  
 Response: 142902  
 Conc: 1.17 ng/ml

Instrument :  
 ECD\_P  
 ClientSampleId :



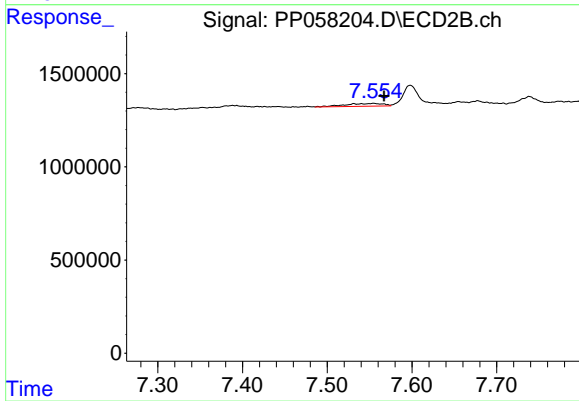
#37 AR-1262-2

R.T.: 7.043 min  
 Delta R.T.: 0.004 min  
 Response: 489853  
 Conc: 3.95 ng/ml



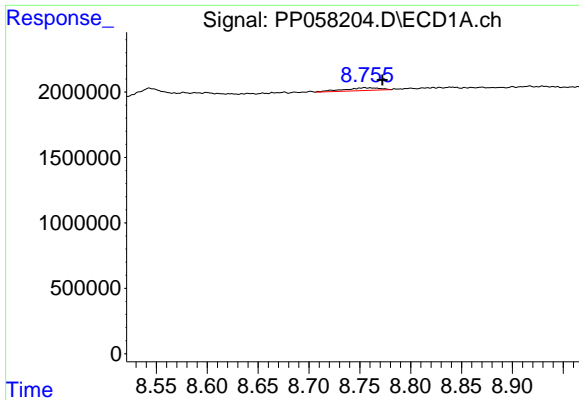
#38 AR-1262-3

R.T.: 8.686 min  
 Delta R.T.: 0.005 min  
 Response: 23497  
 Conc: 0.27 ng/ml



#38 AR-1262-3

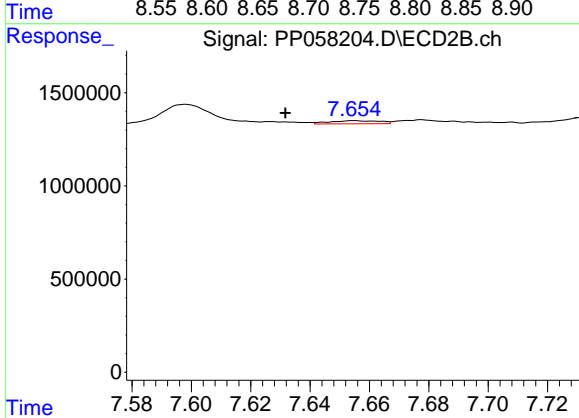
R.T.: 7.555 min  
 Delta R.T.: -0.012 min  
 Response: 455107  
 Conc: 4.85 ng/ml



#39 AR-1262-4

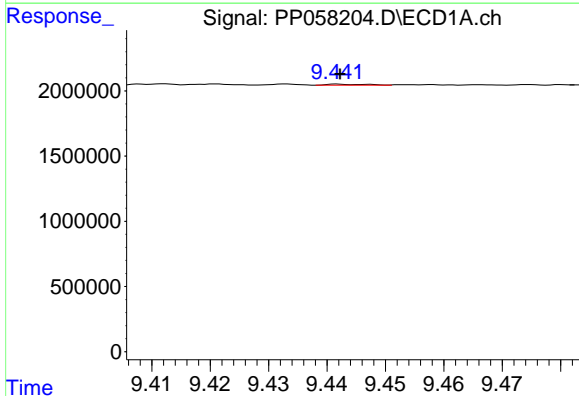
R.T.: 8.755 min  
 Delta R.T.: -0.017 min  
 Response: 546045  
 Conc: 8.15 ng/ml

Instrument :  
 ECD\_P  
 ClientSampleId :



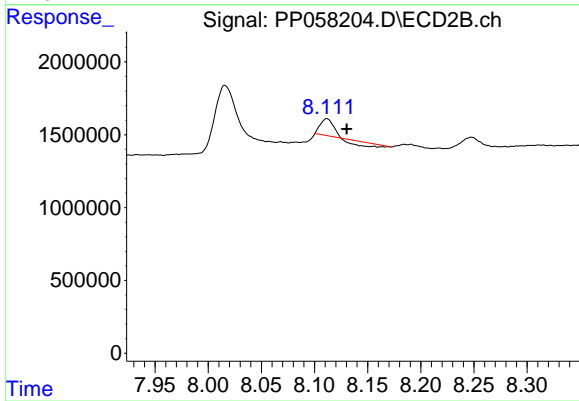
#39 AR-1262-4

R.T.: 7.655 min  
 Delta R.T.: 0.023 min  
 Response: 200510  
 Conc: 1.18 ng/ml



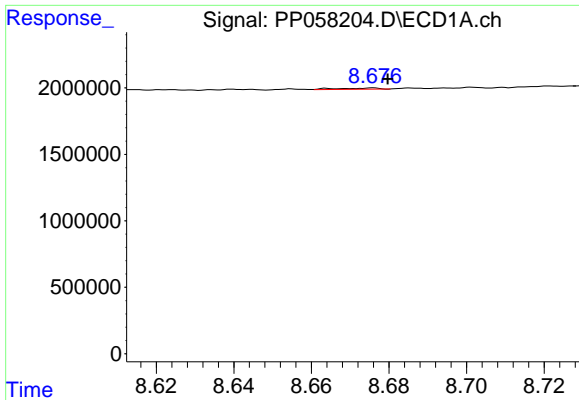
#40 AR-1262-5

R.T.: 9.442 min  
 Delta R.T.: 0.000 min  
 Response: 36648  
 Conc: 0.96 ng/ml



#40 AR-1262-5

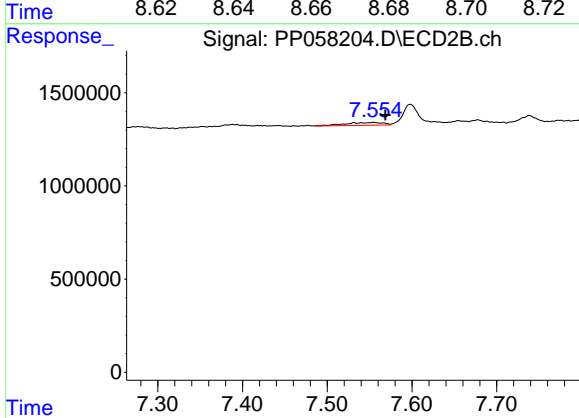
R.T.: 8.112 min  
 Delta R.T.: -0.019 min  
 Response: 501399  
 Conc: 6.81 ng/ml



#41 AR-1268-1

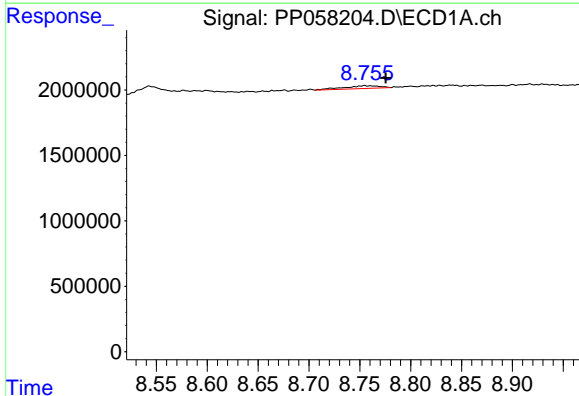
R.T.: 8.676 min  
 Delta R.T.: -0.004 min  
 Response: 72048  
 Conc: 0.46 ng/ml

Instrument :  
 ECD\_P  
 ClientSampleId :



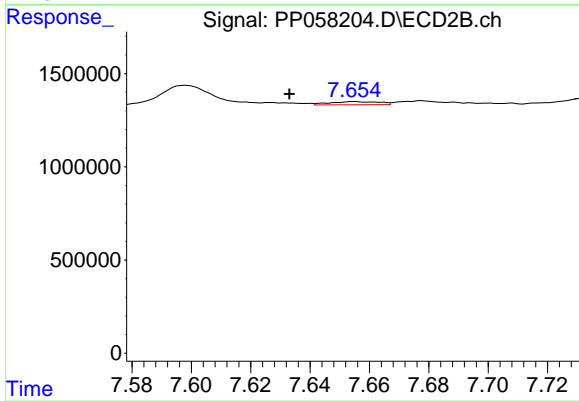
#41 AR-1268-1

R.T.: 7.555 min  
 Delta R.T.: -0.014 min  
 Response: 455107  
 Conc: 1.73 ng/ml



#42 AR-1268-2

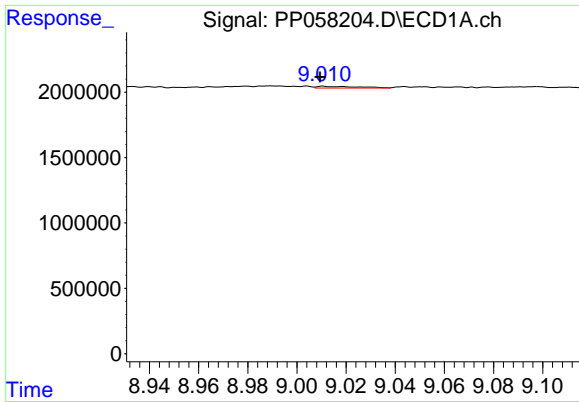
R.T.: 8.755 min  
 Delta R.T.: -0.021 min  
 Response: 546045  
 Conc: 4.18 ng/ml



#42 AR-1268-2

R.T.: 7.655 min  
 Delta R.T.: 0.022 min  
 Response: 200510  
 Conc: 0.82 ng/ml

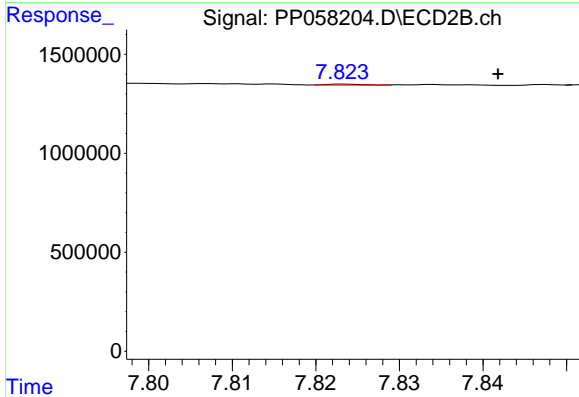




#43 AR-1268-3

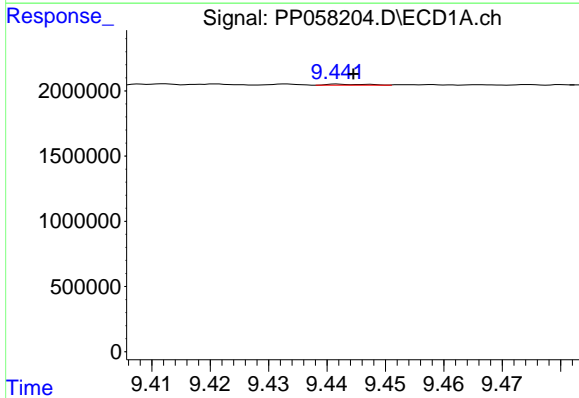
R.T.: 9.011 min  
 Delta R.T.: 0.001 min  
 Response: 158408  
 Conc: 1.23 ng/ml

Instrument :  
 ECD\_P  
 ClientSampleId :



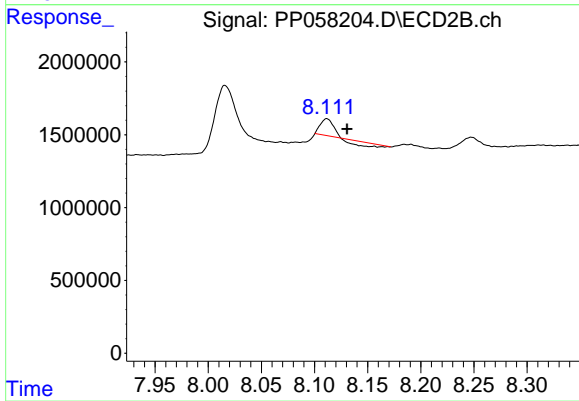
#43 AR-1268-3

R.T.: 7.823 min  
 Delta R.T.: -0.018 min  
 Response: 14016  
 Conc: 0.07 ng/ml



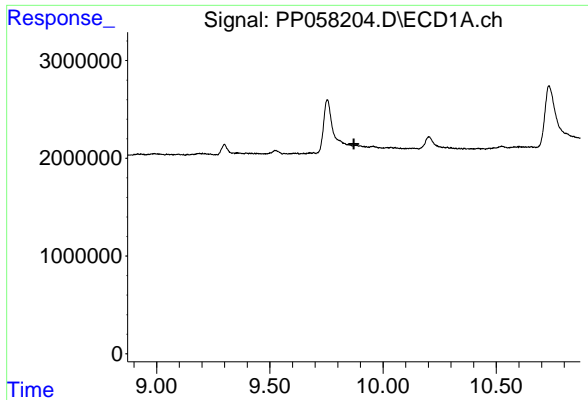
#44 AR-1268-4

R.T.: 9.442 min  
 Delta R.T.: -0.002 min  
 Response: 36648  
 Conc: 0.87 ng/ml



#44 AR-1268-4

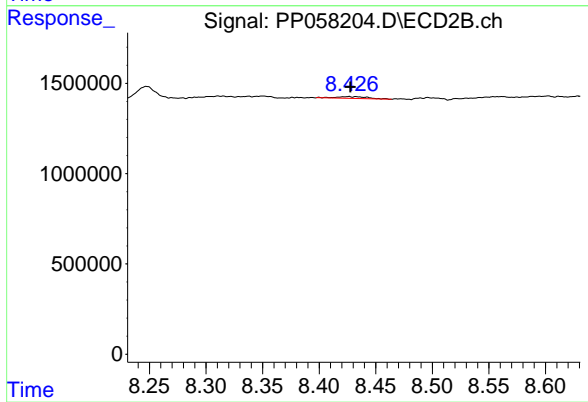
R.T.: 8.112 min  
 Delta R.T.: -0.019 min  
 Response: 501399  
 Conc: 6.05 ng/ml



#45 AR-1268-5

R.T.: 9.876 min  
Delta R.T.: 0.006 min  
Response: -13602  
Conc: N.D.

Instrument :  
ECD\_P  
ClientSampleId :



#45 AR-1268-5

R.T.: 8.426 min  
Delta R.T.: -0.001 min  
Response: 176740  
Conc: 0.34 ng/ml