

Data Path : Z:\pestpcbsrv\HPCHEM1\ECD_P\Data\PP060322\
 Data File : PP048384.D
 Signal(s) : Signal #1: ECD1A.ch Signal #2: ECD2B.ch
 Acq On : 03 Jun 2022 10:37
 Operator : YP\AJ
 Sample : N2874-15
 Misc :
 ALS Vial : 10 Sample Multiplier: 1

Instrument :
 ECD_P
ClientSampleId :
 P007-SS003-2430-01

Manual Integrations
APPROVED

Reviewed By :Yogesh Patel 06/06/2022
 Supervised By :Ankita Jodhani 06/06/2022

Integration File signal 1: autoint1.e
 Integration File signal 2: autoint2.e
 Quant Time: Jun 04 00:38:42 2022
 Quant Method : Z:\pestpcbsrv\HPCHEM1\ECD_P\methods\PP052722.M
 Quant Title : GC EXTRACTABLES
 QLast Update : Fri May 27 23:53:39 2022
 Response via : Initial Calibration
 Integrator: ChemStation

Volume Inj. : 2 µl
 Signal #1 Phase : ZB-MR1 Signal #2 Phase: ZB-MR2
 Signal #1 Info : 30Mx0.32mmx 0.50µ Signal #2 Info : 30M x 0.32mm x 0.25µm

Compound	RT#1	RT#2	Resp#1	Resp#2	ng/ml	ng/ml

System Monitoring Compounds						
1) SA Tetrachlo...	4.034	3.214	39360018	29881045	16.808	15.162
2) SA Decachlor...	10.385	8.640	32511920	20975257	16.728	12.976m
Target Compounds						
31) L7 AR-1260-1	7.093	5.975	10447.9E6	8485.1E6	111938.297	99121.121
32) L7 AR-1260-2	7.380	6.181	11055.5E6	9042.8E6	98899.070	87728.057
33) L7 AR-1260-3	7.777	6.347	8078.6E6	9385.6E6	94313.267	94782.427
34) L7 AR-1260-4	8.029	6.863	10412.6E6	7492.8E6	100355.680	90002.907
35) L7 AR-1260-5	8.392	7.130	15653.5E6	13303.0E6	75856.464	67047.546

(f)=RT Delta > 1/2 Window (#)=Amounts differ by > 25% (m)=manual int.

Data Path : Z:\pestpcbsrv\HPCHEM1\ECD_P\Data\PP060322\
 Data File : PP048384.D
 Signal(s) : Signal #1: ECD1A.ch Signal #2: ECD2B.ch
 Acq On : 03 Jun 2022 10:37
 Operator : YP\AJ
 Sample : N2874-15
 Misc :
 ALS Vial : 10 Sample Multiplier: 1

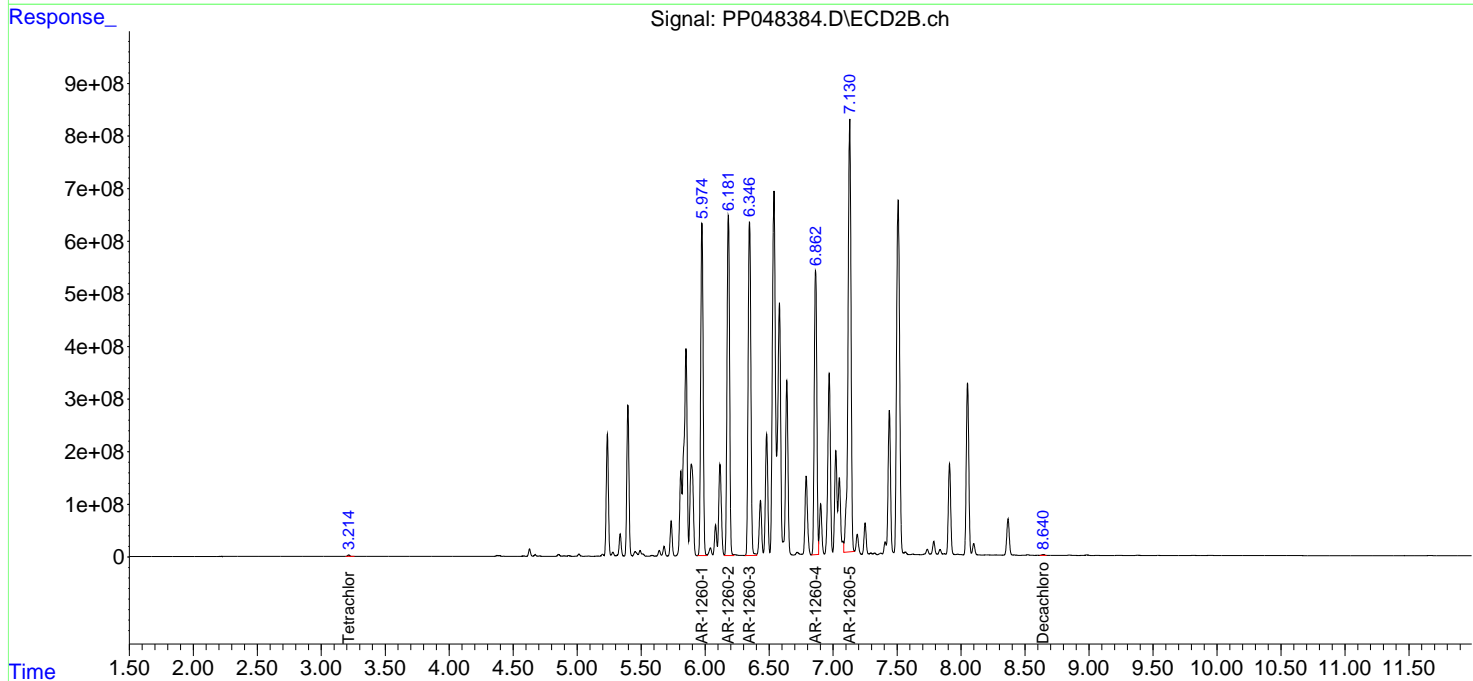
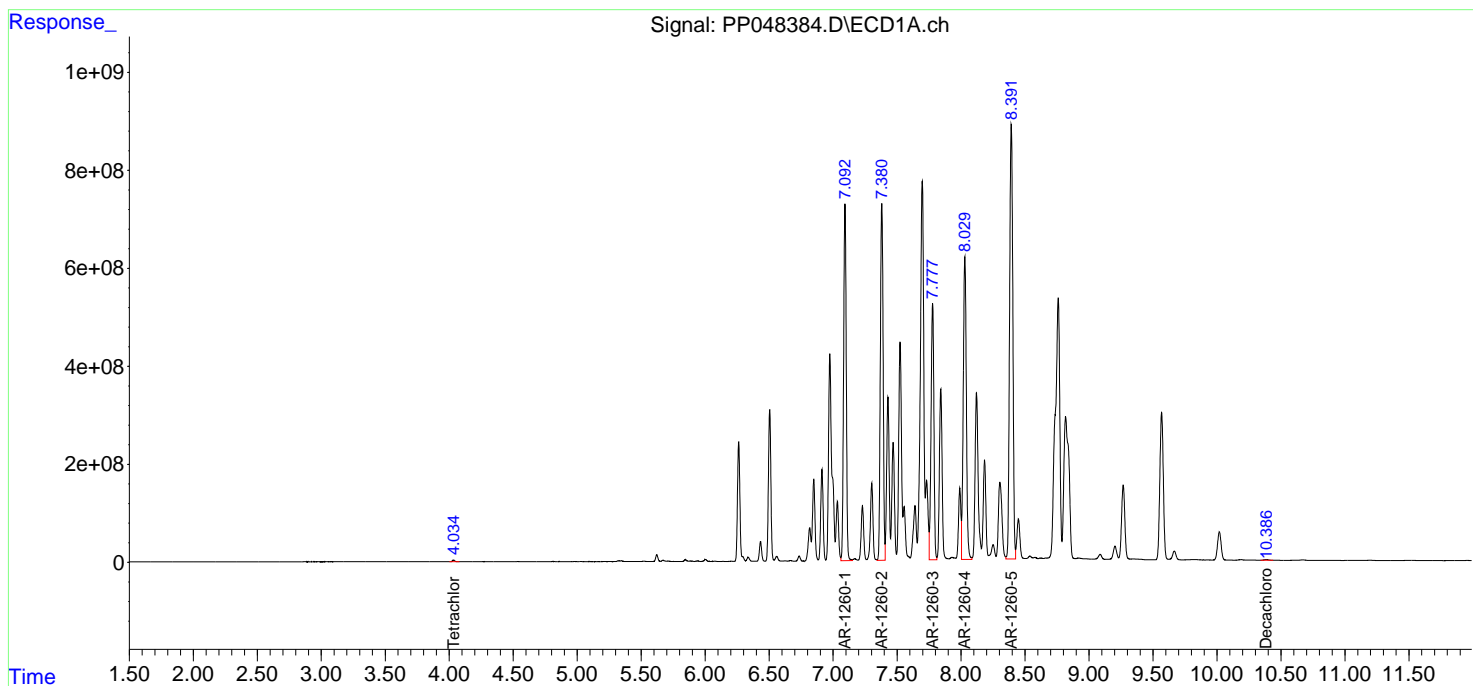
Instrument :
 ECD_P
ClientSampleId :
 P007-SS003-2430-01

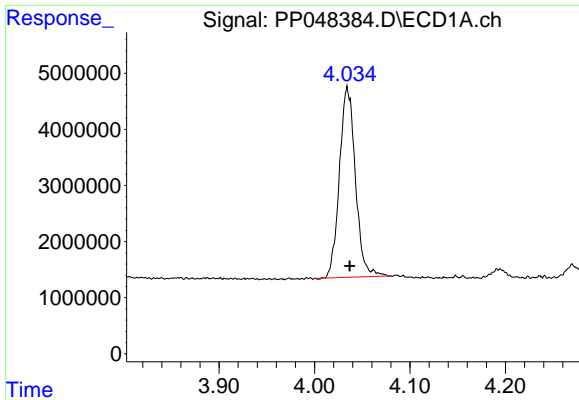
Manual Integrations
APPROVED

Reviewed By :Yogesh Patel 06/06/2022
 Supervised By :Ankita Jodhani 06/06/2022

Integration File signal 1: autoint1.e
 Integration File signal 2: autoint2.e
 Quant Time: Jun 04 00:38:42 2022
 Quant Method : Z:\pestpcbsrv\HPCHEM1\ECD_P\methods\PP052722.M
 Quant Title : GC EXTRACTABLES
 QLast Update : Fri May 27 23:53:39 2022
 Response via : Initial Calibration
 Integrator: ChemStation

Volume Inj. : 2 µl
 Signal #1 Phase : ZB-MR1 Signal #2 Phase: ZB-MR2
 Signal #1 Info : 30Mx0.32mmx 0.50µm Signal #2 Info : 30M x 0.32mm x 0.25µm



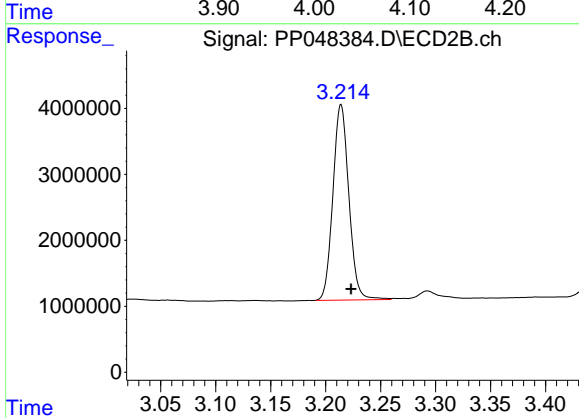


#1 Tetrachloro-m-xylene
 R.T.: 4.034 min
 Delta R.T.: -0.003 min
 Response: 39360018
 Conc: 16.81 ng/ml

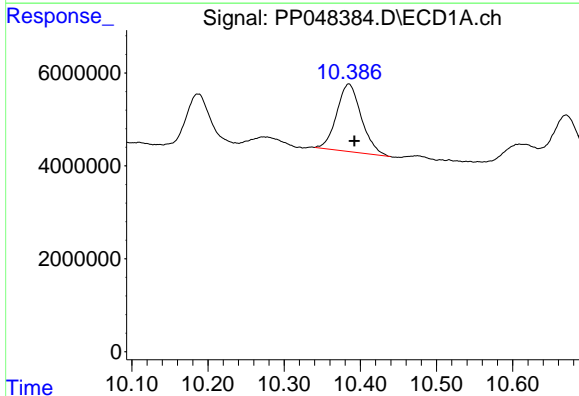
Instrument :
 ECD_P
 ClientSampleId :
 P007-SS003-2430-01

Manual Integrations
 APPROVED

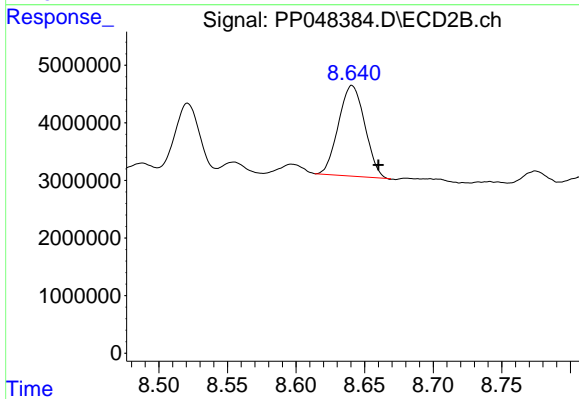
Reviewed By :Yogesh Patel 06/06/2022
 Supervised By :Ankita Jodhani 06/06/2022



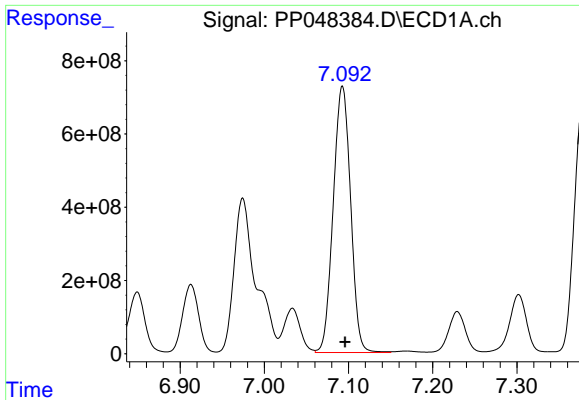
#1 Tetrachloro-m-xylene
 R.T.: 3.214 min
 Delta R.T.: -0.009 min
 Response: 29881045
 Conc: 15.16 ng/ml



#2 Decachlorobiphenyl
 R.T.: 10.385 min
 Delta R.T.: -0.008 min
 Response: 32511920
 Conc: 16.73 ng/ml



#2 Decachlorobiphenyl
 R.T.: 8.640 min
 Delta R.T.: -0.020 min
 Response: 20975257
 Conc: 12.98 ng/ml m



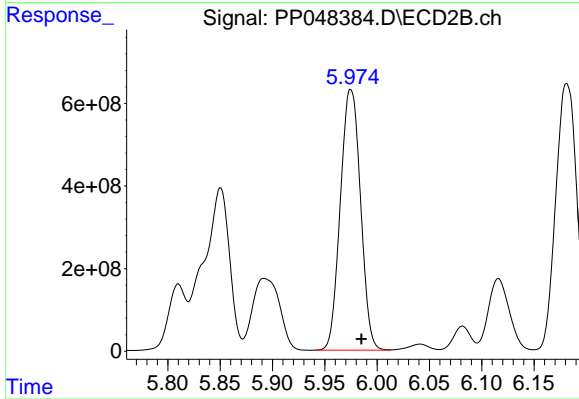
#31 AR-1260-1

R.T.: 7.093 min
 Delta R.T.: -0.003 min
 Response: 10447908704
 Conc: 111938.30 ng

Instrument :
 ECD_P
 ClientSampleId :
 P007-SS003-2430-01

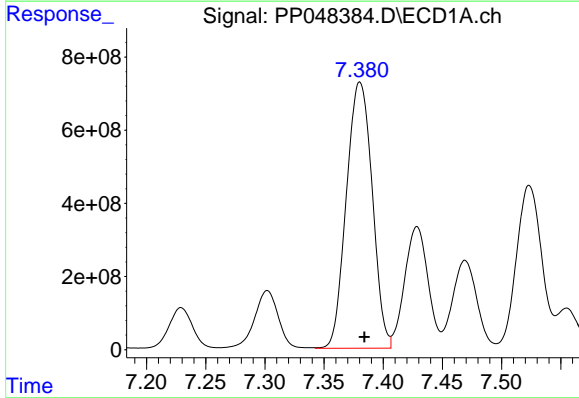
Manual Integrations
 APPROVED

Reviewed By :Yogesh Patel 06/06/2022
 Supervised By :Ankita Jodhani 06/06/2022



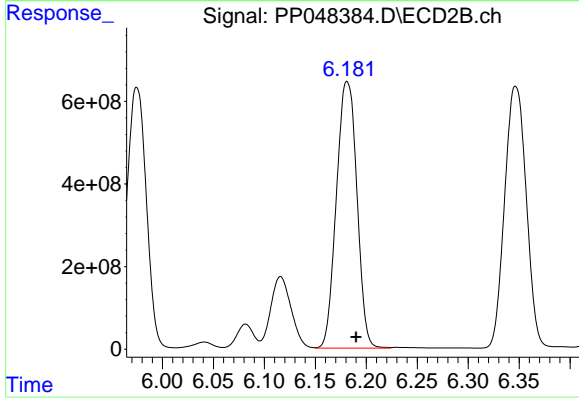
#31 AR-1260-1

R.T.: 5.975 min
 Delta R.T.: -0.010 min
 Response: 8485111347
 Conc: 99121.12 ng/ml



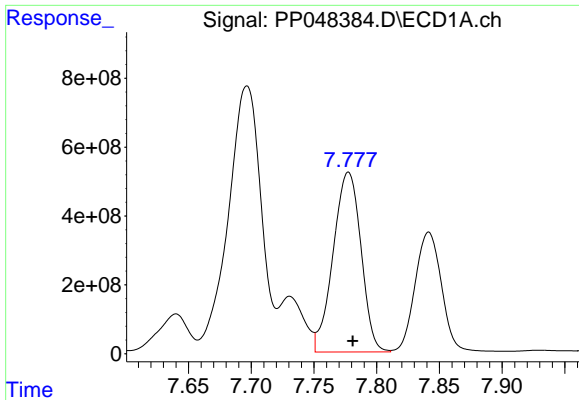
#32 AR-1260-2

R.T.: 7.380 min
 Delta R.T.: -0.004 min
 Response: 11055507021
 Conc: 98899.07 ng/ml



#32 AR-1260-2

R.T.: 6.181 min
 Delta R.T.: -0.009 min
 Response: 9042789277
 Conc: 87728.06 ng/ml



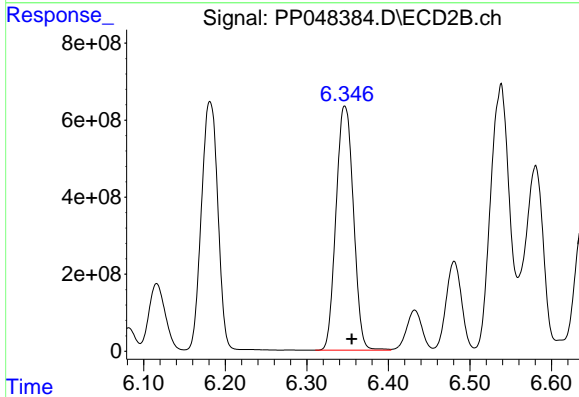
#33 AR-1260-3

R.T.: 7.777 min
 Delta R.T.: -0.004 min
 Response: 8078570116
 Conc: 94313.27 ng/ml

Instrument :
 ECD_P
 ClientSampleId :
 P007-SS003-2430-01

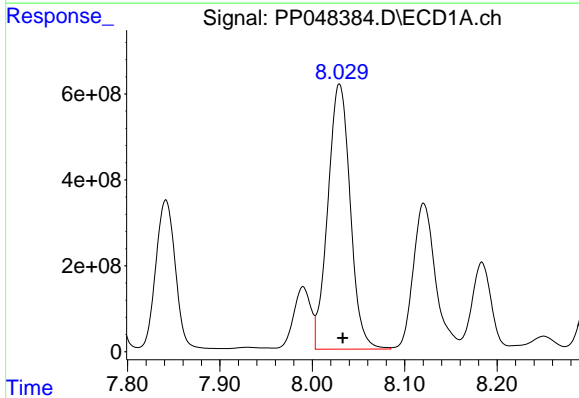
Manual Integrations
 APPROVED

Reviewed By :Yogesh Patel 06/06/2022
 Supervised By :Ankita Jodhani 06/06/2022



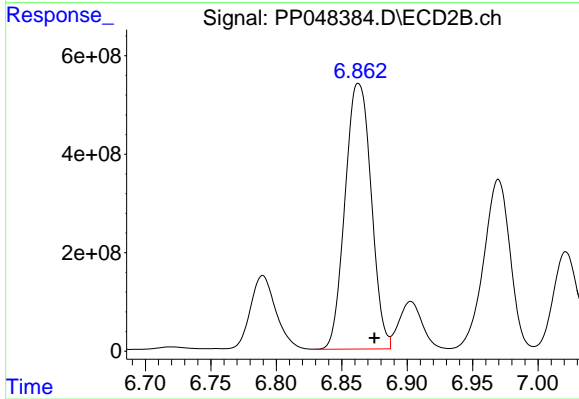
#33 AR-1260-3

R.T.: 6.347 min
 Delta R.T.: -0.008 min
 Response: 9385592784
 Conc: 94782.43 ng/ml



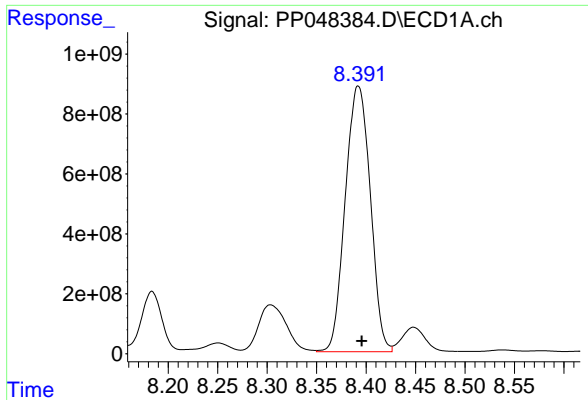
#34 AR-1260-4

R.T.: 8.029 min
 Delta R.T.: -0.004 min
 Response: 10412593842
 Conc: 100355.68 ng/ml



#34 AR-1260-4

R.T.: 6.863 min
 Delta R.T.: -0.012 min
 Response: 7492799056
 Conc: 90002.91 ng/ml



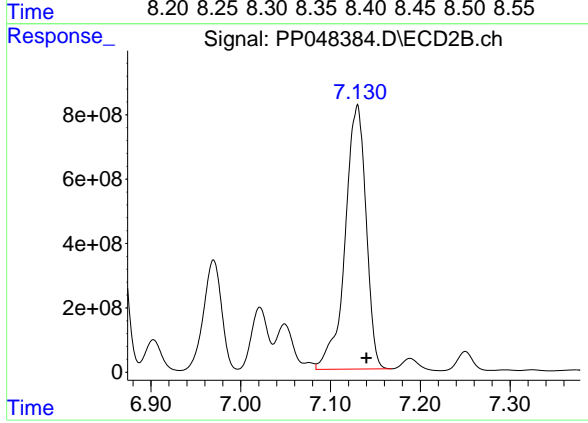
#35 AR-1260-5

R.T.: 8.392 min
Delta R.T.: -0.003 min
Response: 15653511861
Conc: 75856.46 ng/ml

Instrument :
ECD_P
ClientSampleId :
P007-SS003-2430-01

Manual Integrations
APPROVED

Reviewed By :Yogesh Patel 06/06/2022
Supervised By :Ankita Jodhani 06/06/2022



#35 AR-1260-5

R.T.: 7.130 min
Delta R.T.: -0.010 min
Response: 13303045259
Conc: 67047.55 ng/ml