

Data Path : Z:\pestpcbsrv\HPCHEM1\ECD_P\Data\PP060322\
 Data File : PP048404.D
 Signal(s) : Signal #1: ECD1A.ch Signal #2: ECD2B.ch
 Acq On : 03 Jun 2022 15:43
 Operator : YP\AJ
 Sample : N2988-01DL 2X
 Misc :
 ALS Vial : 28 Sample Multiplier: 1

Instrument :
 ECD_P
ClientSampleId :
 P015-SS002-0006-01DL

Integration File signal 1: autoint1.e
 Integration File signal 2: autoint2.e
 Quant Time: Jun 04 00:53:42 2022
 Quant Method : Z:\pestpcbsrv\HPCHEM1\ECD_P\methods\PP052722.M
 Quant Title : GC EXTRACTABLES
 QLast Update : Fri May 27 23:53:39 2022
 Response via : Initial Calibration
 Integrator: ChemStation

Volume Inj. : 2 µl
 Signal #1 Phase : ZB-MR1 Signal #2 Phase: ZB-MR2
 Signal #1 Info : 30Mx0.32mmx 0.50µ Signal #2 Info : 30M x 0.32mm x 0.25µm

Compound	RT#1	RT#2	Resp#1	Resp#2	ng/ml	ng/ml

System Monitoring Compounds						
1) SA Tetrachlo...	4.033	3.213	23130320	18543724	9.877	9.409
2) SA Decachlor...	10.384	8.639	16051096	12870805	8.258	7.962
Target Compounds						
31) L7 AR-1260-1	7.091	5.973	28924247	28069541	309.893	327.902
32) L7 AR-1260-2	7.377	6.179	60712743	47799260	543.117	463.722
33) L7 AR-1260-3	7.776	6.346	51343493	31104472	599.410	314.115 #
34) L7 AR-1260-4	8.027	6.861	53919295	38132962	519.670	458.050
35) L7 AR-1260-5	8.390	7.126	105.7E6	105.6E6	512.169	532.384

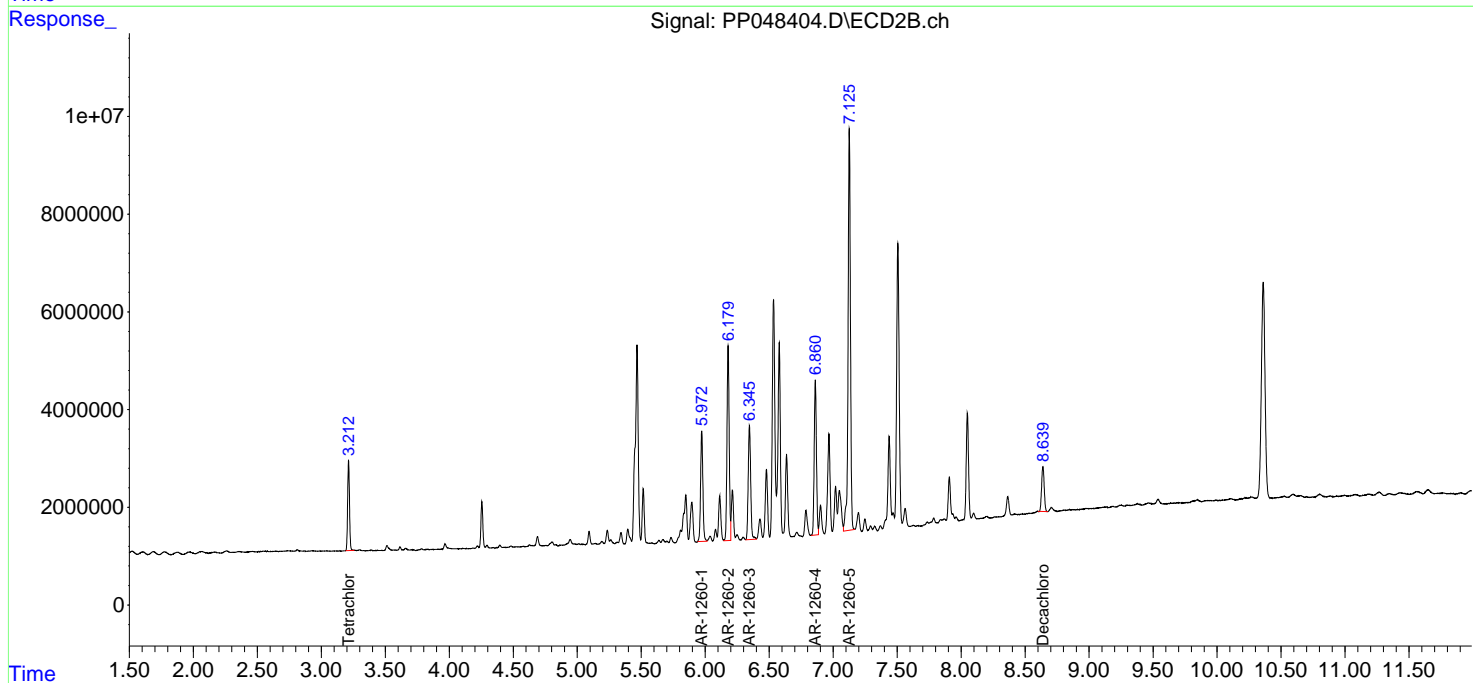
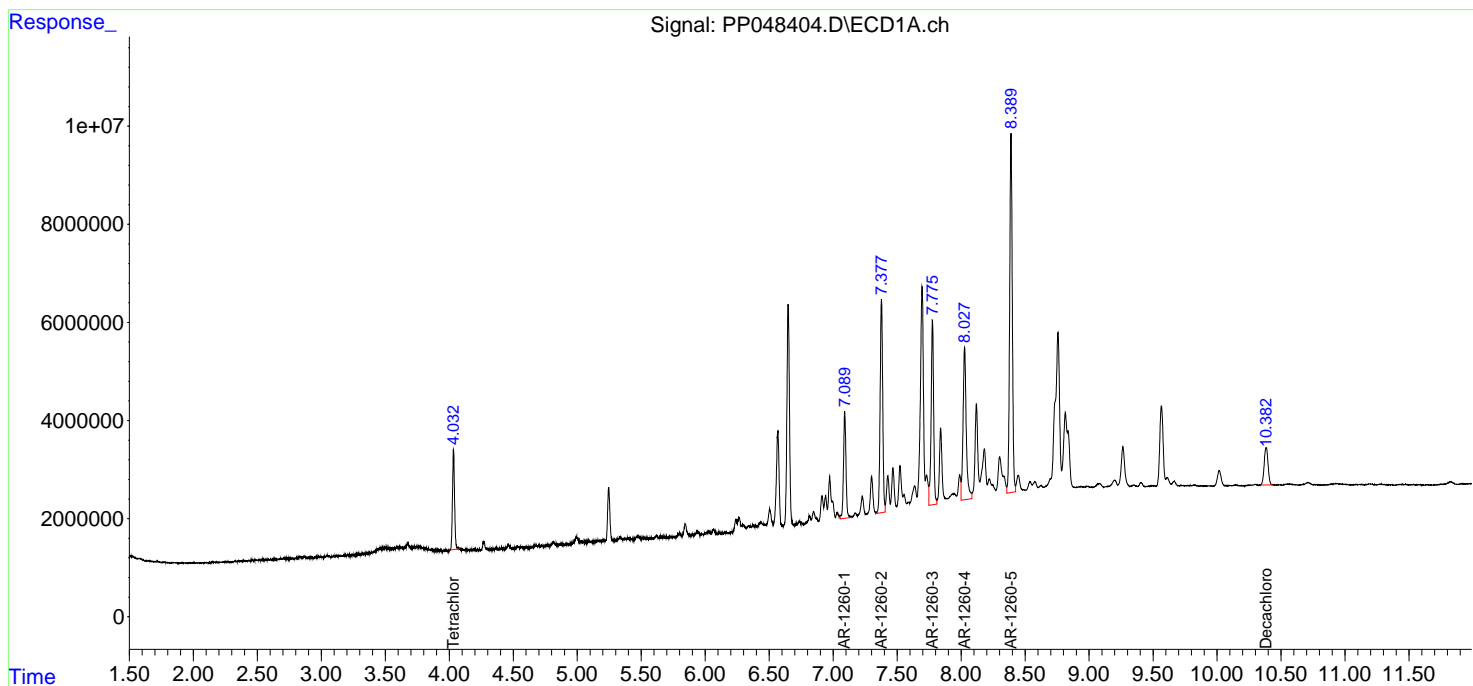
(f)=RT Delta > 1/2 Window (#)=Amounts differ by > 25% (m)=manual int.

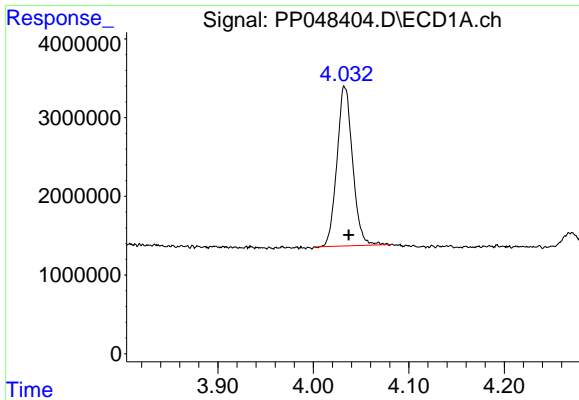
Data Path : Z:\pestpcbsrv\HPCHEM1\ECD_P\Data\PP060322\
 Data File : PP048404.D
 Signal(s) : Signal #1: ECD1A.ch Signal #2: ECD2B.ch
 Acq On : 03 Jun 2022 15:43
 Operator : YP\AJ
 Sample : N2988-01DL 2X
 Misc :
 ALS Vial : 28 Sample Multiplier: 1

Instrument :
 ECD_P
 ClientSampleId :
 P015-SS002-0006-01DL

Integration File signal 1: autoint1.e
 Integration File signal 2: autoint2.e
 Quant Time: Jun 04 00:53:42 2022
 Quant Method : Z:\pestpcbsrv\HPCHEM1\ECD_P\methods\PP052722.M
 Quant Title : GC EXTRACTABLES
 QLast Update : Fri May 27 23:53:39 2022
 Response via : Initial Calibration
 Integrator: ChemStation

Volume Inj. : 2 µl
 Signal #1 Phase : ZB-MR1 Signal #2 Phase: ZB-MR2
 Signal #1 Info : 30Mx0.32mmx 0.50µ Signal #2 Info : 30M x 0.32mm x 0.25µm

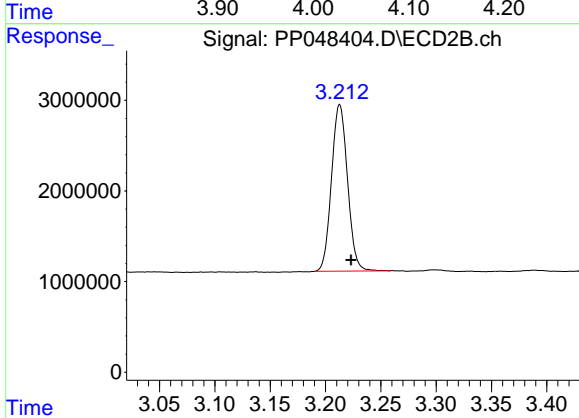




#1 Tetrachloro-m-xylene

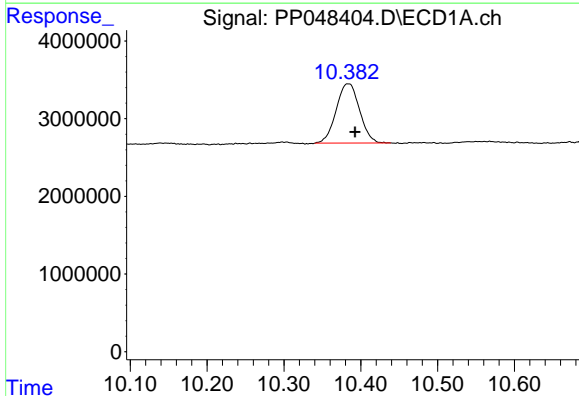
R.T.: 4.033 min
 Delta R.T.: -0.004 min
 Response: 23130320
 Conc: 9.88 ng/ml

Instrument :
 ECD_P
 ClientSampleId :
 P015-SS002-0006-01DL



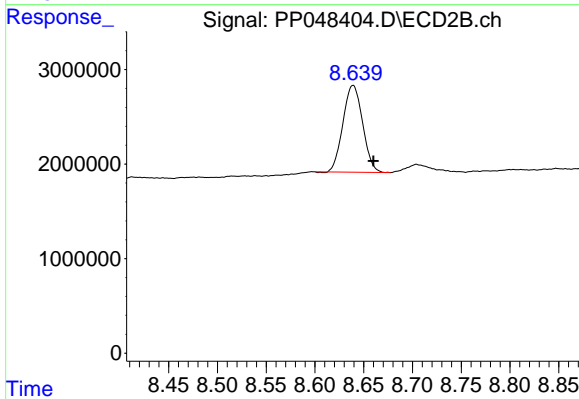
#1 Tetrachloro-m-xylene

R.T.: 3.213 min
 Delta R.T.: -0.010 min
 Response: 18543724
 Conc: 9.41 ng/ml



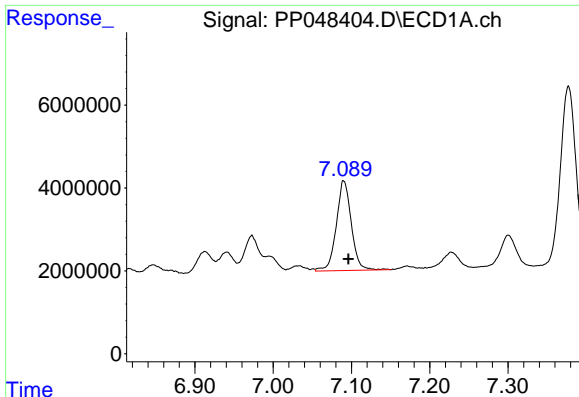
#2 Decachlorobiphenyl

R.T.: 10.384 min
 Delta R.T.: -0.009 min
 Response: 16051096
 Conc: 8.26 ng/ml



#2 Decachlorobiphenyl

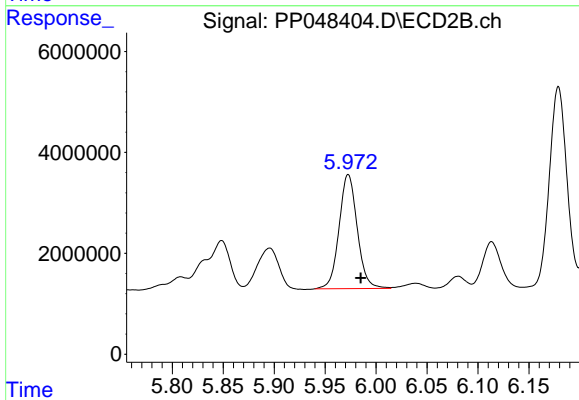
R.T.: 8.639 min
 Delta R.T.: -0.021 min
 Response: 12870805
 Conc: 7.96 ng/ml



#31 AR-1260-1

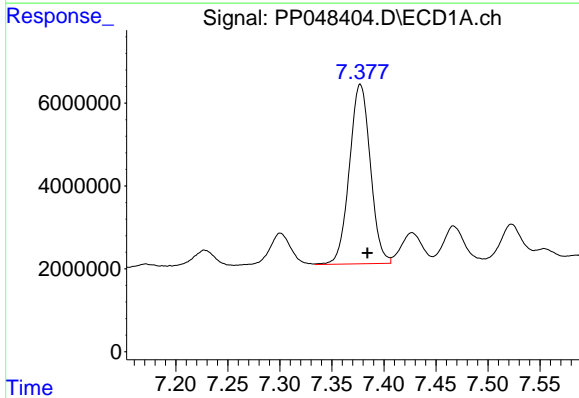
R.T.: 7.091 min
 Delta R.T.: -0.006 min
 Response: 28924247
 Conc: 309.89 ng/ml

Instrument :
 ECD_P
 ClientSampleId :
 P015-SS002-0006-01DL



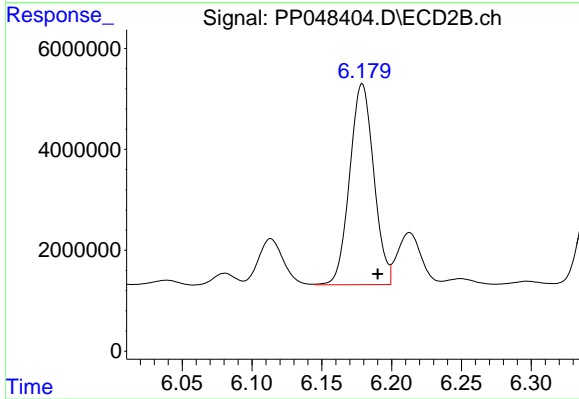
#31 AR-1260-1

R.T.: 5.973 min
 Delta R.T.: -0.012 min
 Response: 28069541
 Conc: 327.90 ng/ml



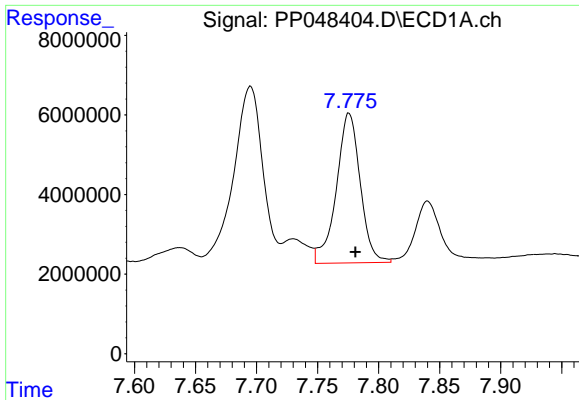
#32 AR-1260-2

R.T.: 7.377 min
 Delta R.T.: -0.007 min
 Response: 60712743
 Conc: 543.12 ng/ml



#32 AR-1260-2

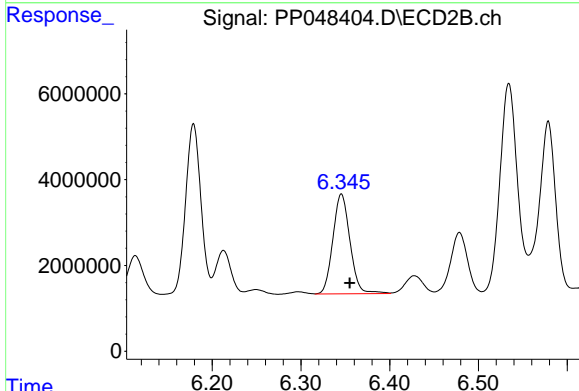
R.T.: 6.179 min
 Delta R.T.: -0.011 min
 Response: 47799260
 Conc: 463.72 ng/ml



#33 AR-1260-3

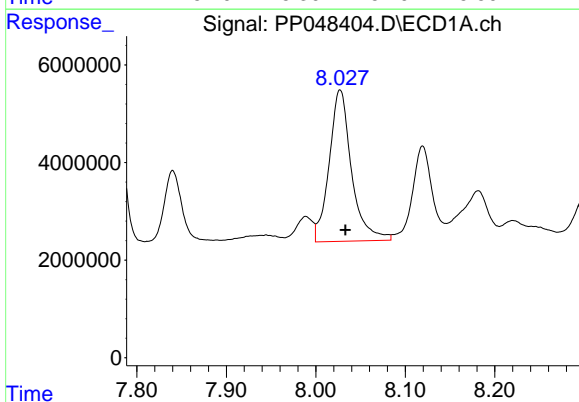
R.T.: 7.776 min
 Delta R.T.: -0.005 min
 Response: 51343493
 Conc: 599.41 ng/ml

Instrument :
 ECD_P
 ClientSampleId :
 P015-SS002-0006-01DL



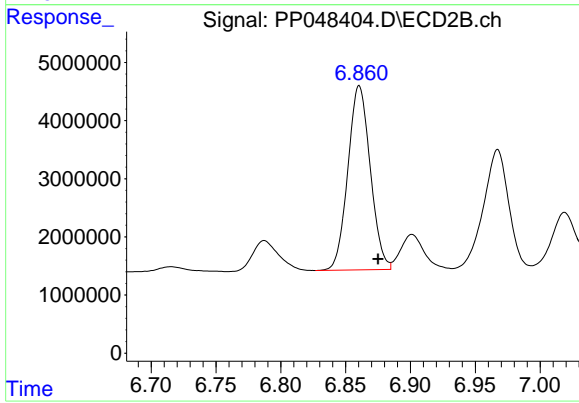
#33 AR-1260-3

R.T.: 6.346 min
 Delta R.T.: -0.009 min
 Response: 31104472
 Conc: 314.12 ng/ml



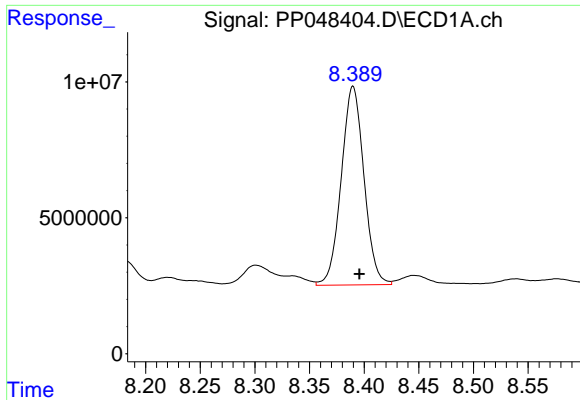
#34 AR-1260-4

R.T.: 8.027 min
 Delta R.T.: -0.006 min
 Response: 53919295
 Conc: 519.67 ng/ml



#34 AR-1260-4

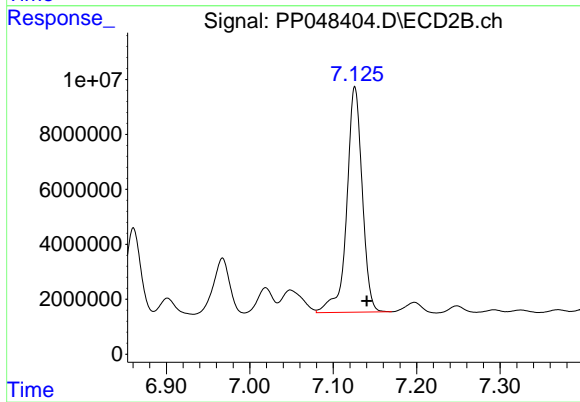
R.T.: 6.861 min
 Delta R.T.: -0.014 min
 Response: 38132962
 Conc: 458.05 ng/ml



#35 AR-1260-5

R.T.: 8.390 min
Delta R.T.: -0.006 min
Response: 105689689
Conc: 512.17 ng/ml

Instrument :
ECD_P
ClientSampleId :
P015-SS002-0006-01DL



#35 AR-1260-5

R.T.: 7.126 min
Delta R.T.: -0.014 min
Response: 105631418
Conc: 532.38 ng/ml