

Data Path : Z:\pestpcbsrv\HPCHEM1\ECD_P\Data\PP060424\
 Data File : PP065452.D
 Signal(s) : Signal #1: ECD1A.ch Signal #2: ECD2B.ch
 Acq On : 04 Jun 2024 12:16
 Operator : YP\AJ
 Sample : P2700-16 10X
 Misc :
 ALS Vial : 12 Sample Multiplier: 1

Instrument :
 ECD_P
 ClientSampleId :
 Y2-308-0001-1-2

Integration File signal 1: autoint1.e
 Integration File signal 2: autoint2.e
 Quant Time: Jun 04 12:38:09 2024
 Quant Method : Z:\pestpcbsrv\HPCHEM1\ECD_P\methods\PP060324.M
 Quant Title : GC EXTRACTABLES
 QLast Update : Tue Jun 04 04:29:37 2024
 Response via : Initial Calibration
 Integrator: ChemStation

Volume Inj. : 2 µl
 Signal #1 Phase : ZB-MR2 Signal #2 Phase: ZB-MR2
 Signal #1 Info : 30Mx0.32mmx 0.50µ Signal #2 Info : 30M x 0.32mm x 0.25µm

Compound	RT#1	RT#2	Resp#1	Resp#2	ng/ml	ng/ml
System Monitoring Compounds						
1) SA Tetrachlo...	4.469	3.748	2498761	2501952	1.501	1.671
2) SA Decachlor...	10.208	8.810	3305318	2356592	2.004	1.611
Target Compounds						
15) L3 AR-1232-5	5.905	0.000	260680	0	16.034	N.D. #
20) L4 AR-1242-5	0.000	5.655	0	2275178	N.D.	59.879 #
22) L5 AR-1248-2	5.905	0.000	260680	0	4.696	N.D. #
24) L5 AR-1248-4	6.487f	0.000	2817233	0	44.479	N.D. #
26) L6 AR-1254-1	6.487	5.655	2817233	2275178	40.676	28.026 #
27) L6 AR-1254-2	6.704	5.801	4052893	3083416	38.403	42.295
28) L6 AR-1254-3	7.070	6.223	2052823	6683498	18.633	56.942 #
29) L6 AR-1254-4	7.356	6.437	1444643	669352	19.252	10.479 #
30) L6 AR-1254-5	7.772	6.856	14556229	11475697	164.107	109.046 #
31) L7 AR-1260-1	7.234	6.339	9785852	8234316	112.911	101.900
32) L7 AR-1260-2	7.490	6.526	13030858	10979272	128.774	115.396
33) L7 AR-1260-3	7.849	6.681	7578120	8706091	94.737	96.129
34) L7 AR-1260-4	8.074	7.155	9150185	6315871	103.438	82.399
35) L7 AR-1260-5	8.394	7.395	18408999	15023240	113.270	89.972
36) L8 AR-1262-1	7.907	6.948	4279138	3822768	88.458	81.030
37) L8 AR-1262-2	8.394	7.155	18408999	6315871	98.159	61.541 #
38) L8 AR-1262-3	8.721	7.681	11134906	2646793	81.892	31.752 #
39) L8 AR-1262-4	8.779f	7.744	5995153	10767682	55.445	73.497 #
40) L8 AR-1262-5	9.454	8.242	4046602	2986648	57.973	46.641
41) L9 AR-1268-1	8.721	7.681	11134906	2646793	49.632	12.065 #
42) L9 AR-1268-2	8.779f	7.744	5995153	10767682	29.321	53.400 #
44) L9 AR-1268-4	9.454	8.242	4046602	2986648	55.108	43.710
45) L9 AR-1268-5	9.869	0.000	691795	0	1.247	N.D. #

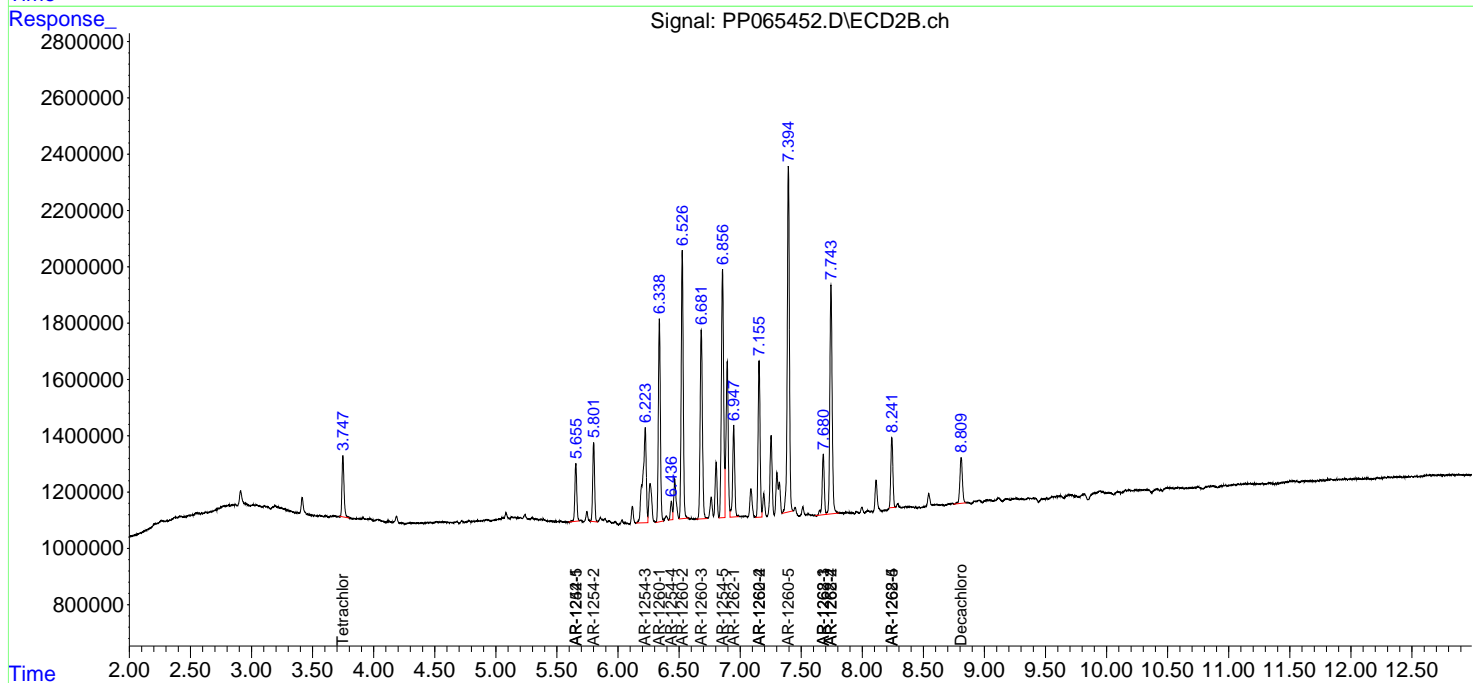
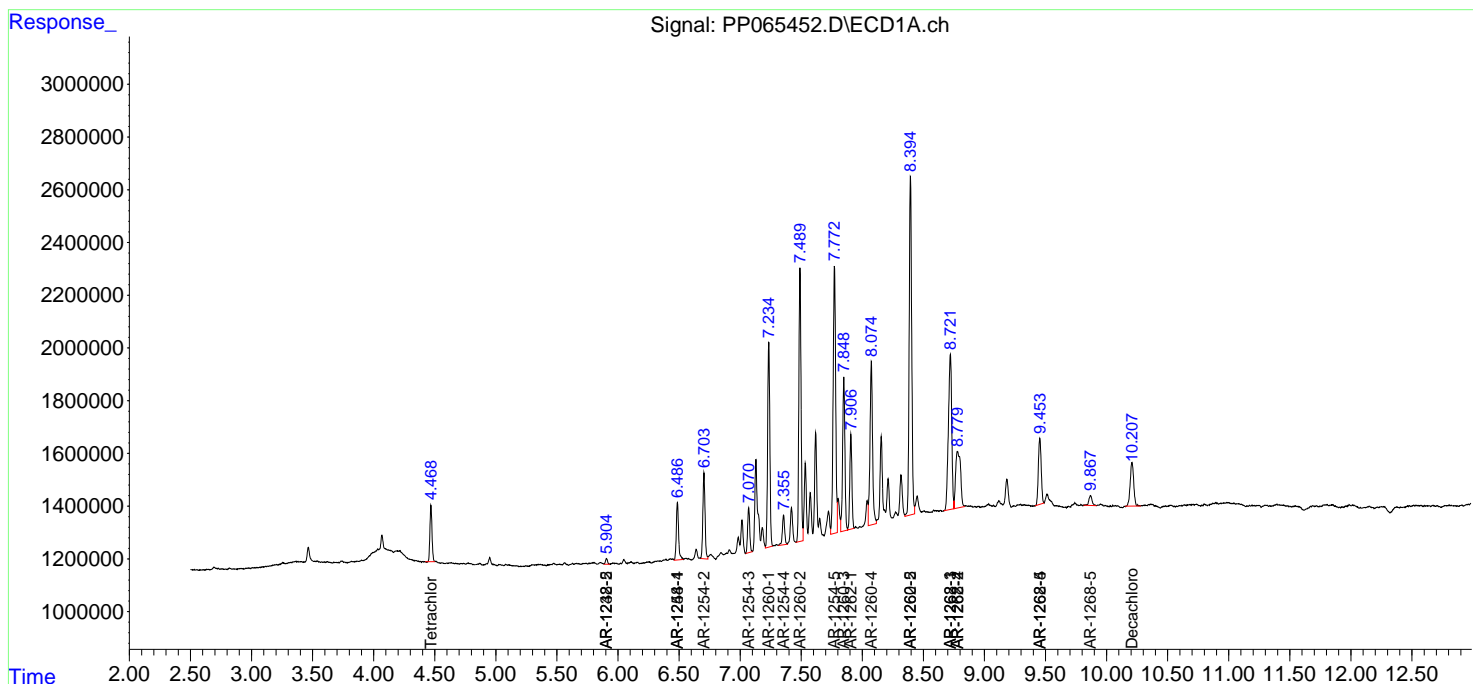
(f)=RT Delta > 1/2 Window (#)=Amounts differ by > 25% (m)=manual int.

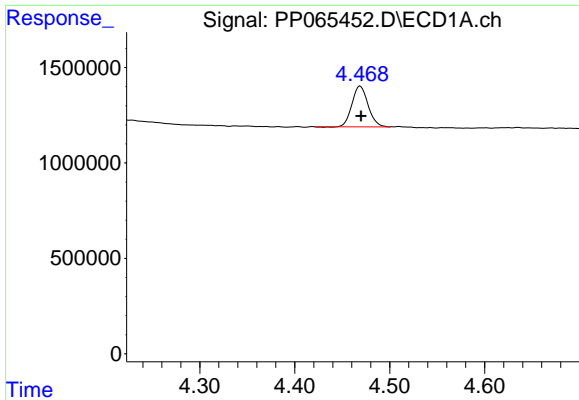
Data Path : Z:\pestpcbsrv\HPCHEM1\ECD_P\Data\PP060424\
 Data File : PP065452.D
 Signal(s) : Signal #1: ECD1A.ch Signal #2: ECD2B.ch
 Acq On : 04 Jun 2024 12:16
 Operator : YP\AJ
 Sample : P2700-16 10X
 Misc :
 ALS Vial : 12 Sample Multiplier: 1

Instrument :
 ECD_P
 ClientSampleId :
 Y2-308-0001-1-2

Integration File signal 1: autoint1.e
 Integration File signal 2: autoint2.e
 Quant Time: Jun 04 12:38:09 2024
 Quant Method : Z:\pestpcbsrv\HPCHEM1\ECD_P\methods\PP060324.M
 Quant Title : GC EXTRACTABLES
 QLast Update : Tue Jun 04 04:29:37 2024
 Response via : Initial Calibration
 Integrator: ChemStation

Volume Inj. : 2 µl
 Signal #1 Phase : ZB-MR1 Signal #2 Phase: ZB-MR2
 Signal #1 Info : 30Mx0.32mmx 0.50µ Signal #2 Info : 30M x 0.32mm x 0.25µm

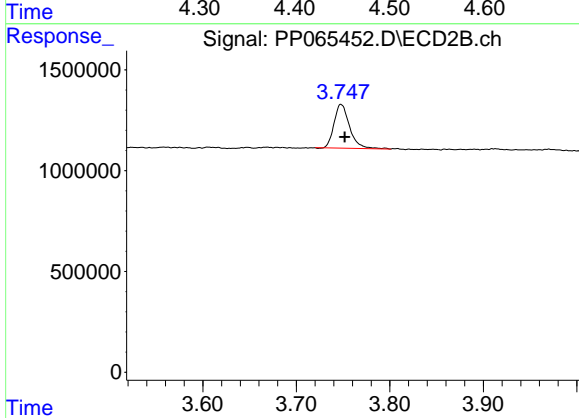




#1 Tetrachloro-m-xylene

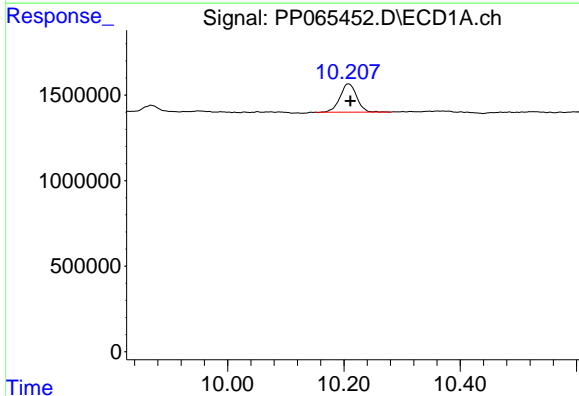
R.T.: 4.469 min
 Delta R.T.: -0.001 min
 Response: 2498761
 Conc: 1.50 ng/ml

Instrument :
 ECD_P
 ClientSampleId :
 Y2-308-0001-1-2



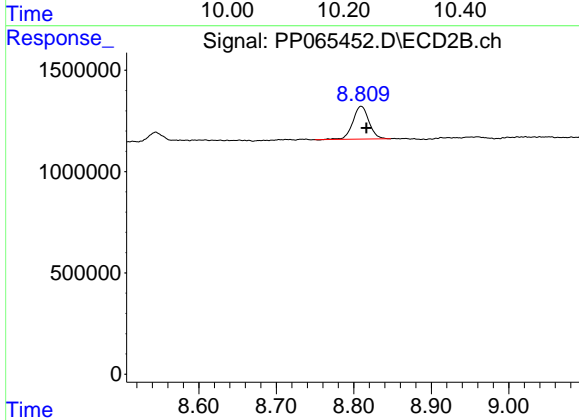
#1 Tetrachloro-m-xylene

R.T.: 3.748 min
 Delta R.T.: -0.004 min
 Response: 2501952
 Conc: 1.67 ng/ml



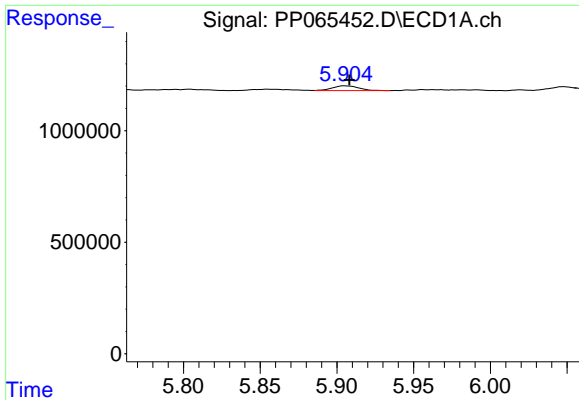
#2 Decachlorobiphenyl

R.T.: 10.208 min
 Delta R.T.: -0.003 min
 Response: 3305318
 Conc: 2.00 ng/ml



#2 Decachlorobiphenyl

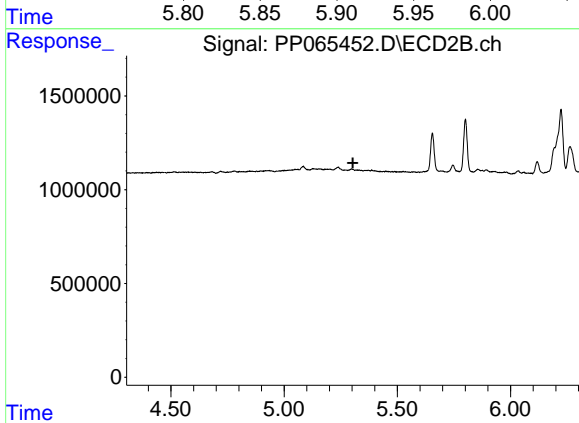
R.T.: 8.810 min
 Delta R.T.: -0.007 min
 Response: 2356592
 Conc: 1.61 ng/ml



#15 AR-1232-5

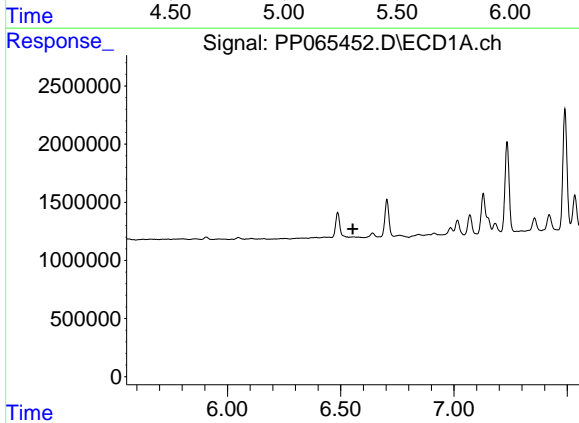
R.T.: 5.905 min
 Delta R.T.: -0.003 min
 Response: 260680
 Conc: 16.03 ng/ml

Instrument :
 ECD_P
 ClientSampleId :
 Y2-308-0001-1-2



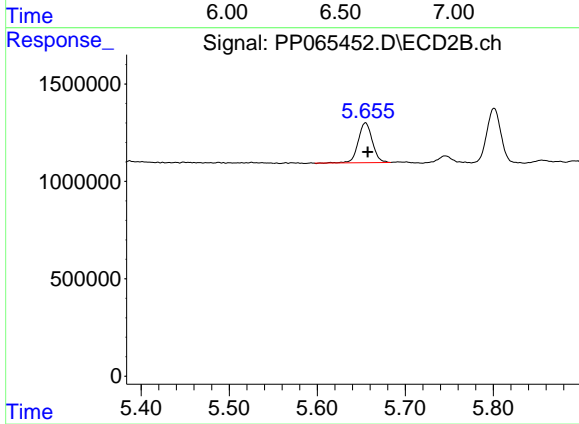
#15 AR-1232-5

R.T.: 0.000 min
 Exp R.T. : 5.304 min
 Response: 0
 Conc: N.D.



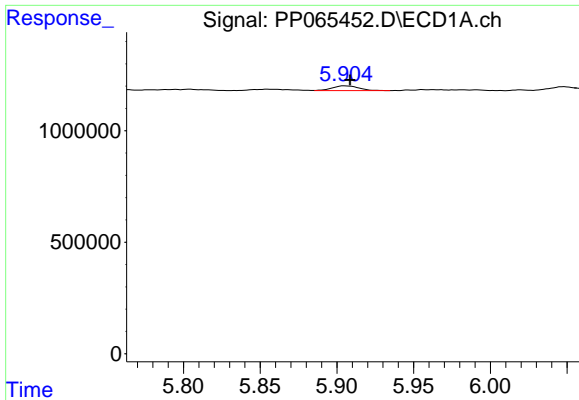
#20 AR-1242-5

R.T.: 0.000 min
 Exp R.T. : 6.554 min
 Response: 0
 Conc: N.D.



#20 AR-1242-5

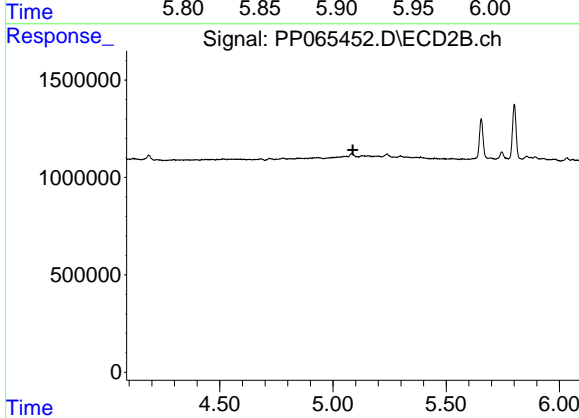
R.T.: 5.655 min
 Delta R.T.: -0.002 min
 Response: 2275178
 Conc: 59.88 ng/ml



#22 AR-1248-2

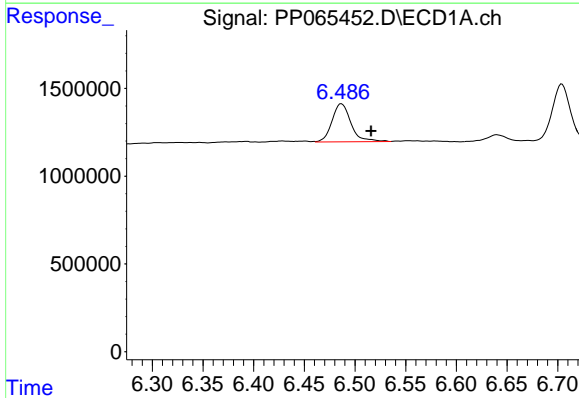
R.T.: 5.905 min
 Delta R.T.: -0.004 min
 Response: 260680
 Conc: 4.70 ng/ml

Instrument :
 ECD_P
 ClientSampleId :
 Y2-308-0001-1-2



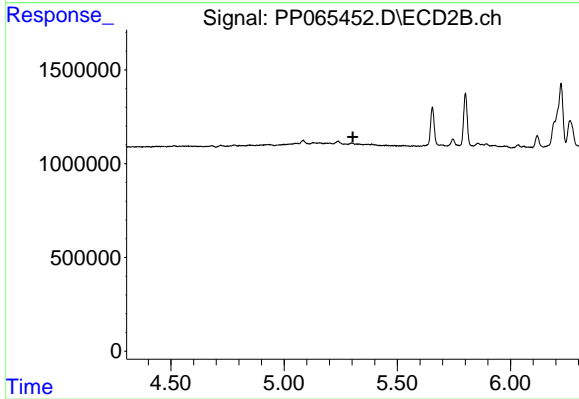
#22 AR-1248-2

R.T.: 0.000 min
 Exp R.T. : 5.088 min
 Response: 0
 Conc: N.D.



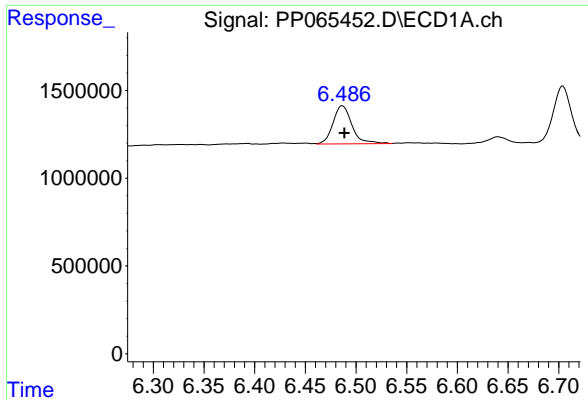
#24 AR-1248-4

R.T.: 6.487 min
 Delta R.T.: -0.029 min
 Response: 2817233
 Conc: 44.48 ng/ml



#24 AR-1248-4

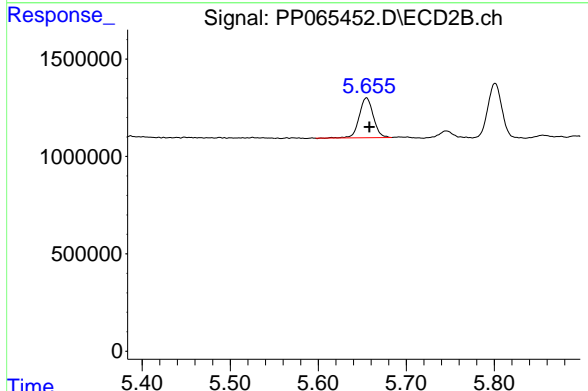
R.T.: 0.000 min
 Exp R.T. : 5.304 min
 Response: 0
 Conc: N.D.



#26 AR-1254-1

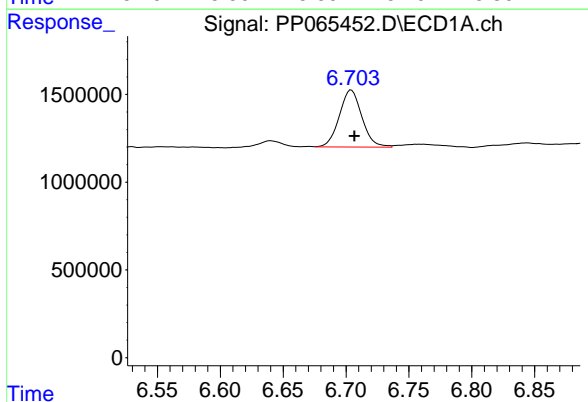
R.T.: 6.487 min
Delta R.T.: -0.002 min
Response: 2817233
Conc: 40.68 ng/ml

Instrument :
ECD_P
ClientSampleId :
Y2-308-0001-1-2



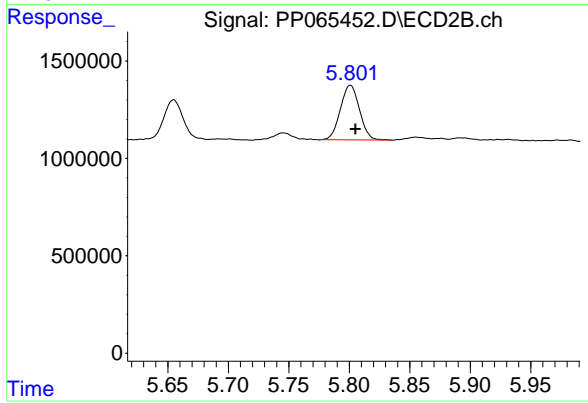
#26 AR-1254-1

R.T.: 5.655 min
Delta R.T.: -0.003 min
Response: 2275178
Conc: 28.03 ng/ml



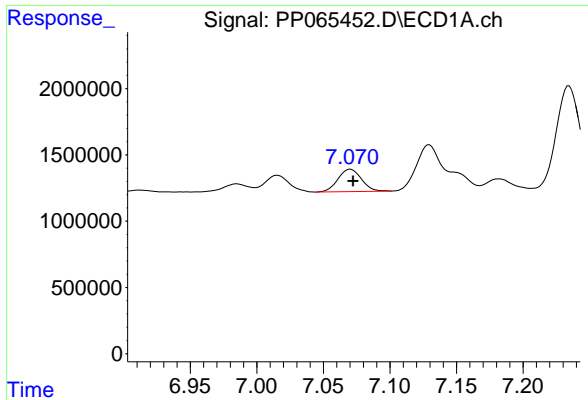
#27 AR-1254-2

R.T.: 6.704 min
Delta R.T.: -0.003 min
Response: 4052893
Conc: 38.40 ng/ml



#27 AR-1254-2

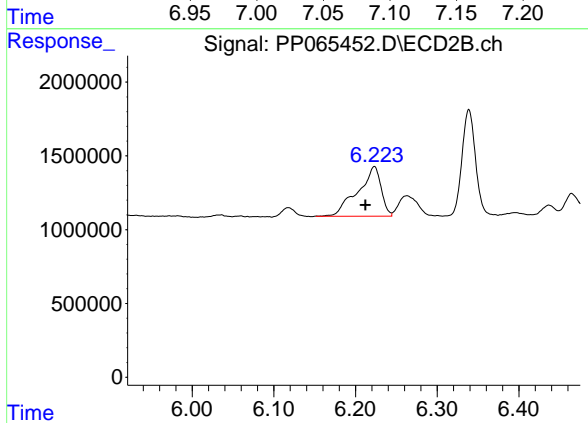
R.T.: 5.801 min
Delta R.T.: -0.004 min
Response: 3083416
Conc: 42.29 ng/ml



#28 AR-1254-3

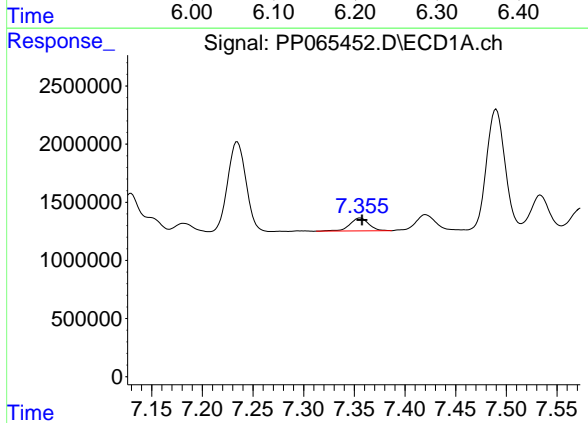
R.T.: 7.070 min
 Delta R.T.: -0.002 min
 Response: 2052823
 Conc: 18.63 ng/ml

Instrument : ECD_P
 ClientSampleId : Y2-308-0001-1-2



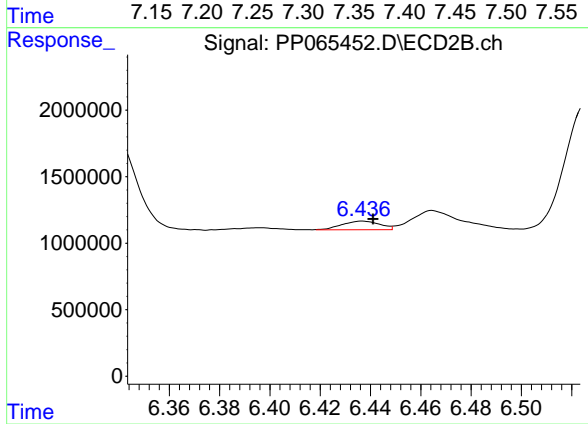
#28 AR-1254-3

R.T.: 6.223 min
 Delta R.T.: 0.011 min
 Response: 6683498
 Conc: 56.94 ng/ml



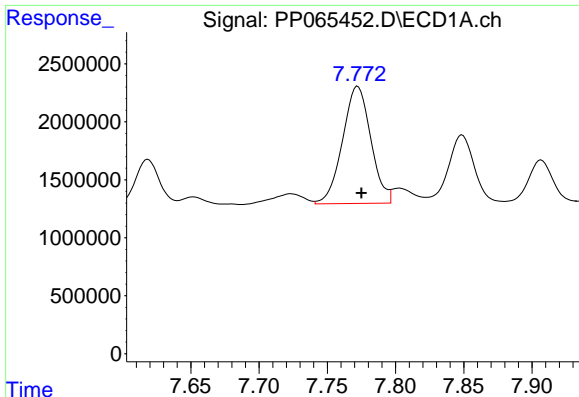
#29 AR-1254-4

R.T.: 7.356 min
 Delta R.T.: -0.002 min
 Response: 1444643
 Conc: 19.25 ng/ml



#29 AR-1254-4

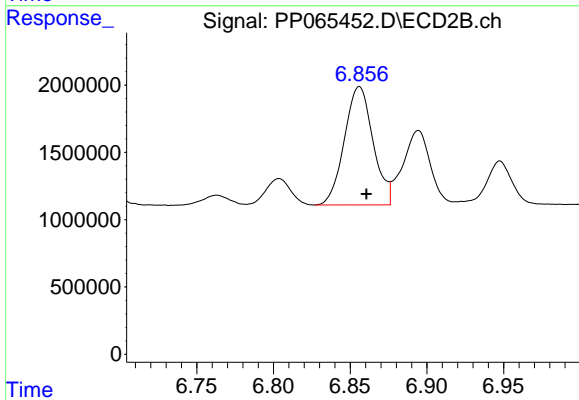
R.T.: 6.437 min
 Delta R.T.: -0.004 min
 Response: 669352
 Conc: 10.48 ng/ml



#30 AR-1254-5

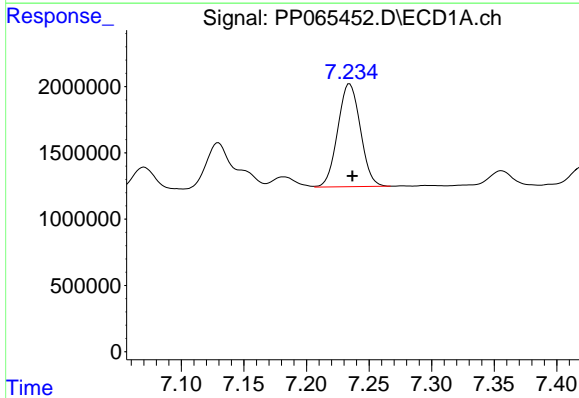
R.T.: 7.772 min
 Delta R.T.: -0.003 min
 Response: 14556229
 Conc: 164.11 ng/ml

Instrument :
 ECD_P
 ClientSampleId :
 Y2-308-0001-1-2



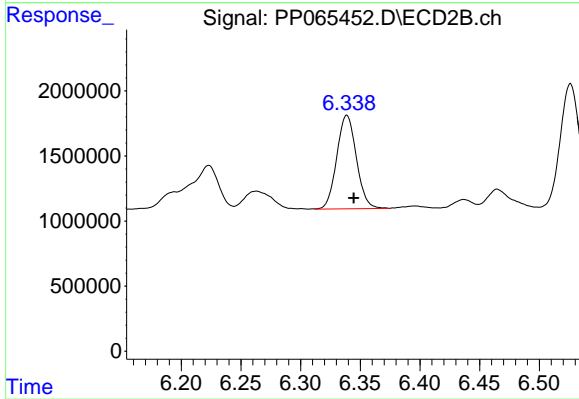
#30 AR-1254-5

R.T.: 6.856 min
 Delta R.T.: -0.005 min
 Response: 11475697
 Conc: 109.05 ng/ml



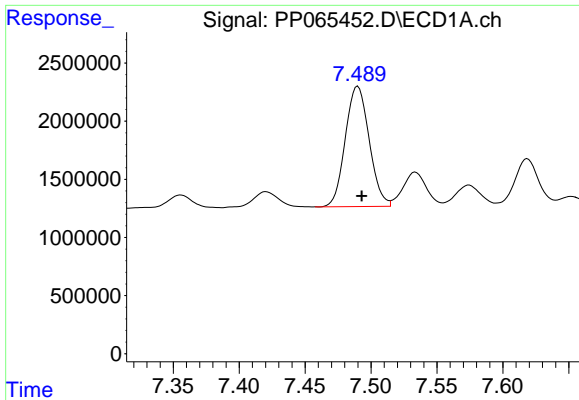
#31 AR-1260-1

R.T.: 7.234 min
 Delta R.T.: -0.002 min
 Response: 9785852
 Conc: 112.91 ng/ml



#31 AR-1260-1

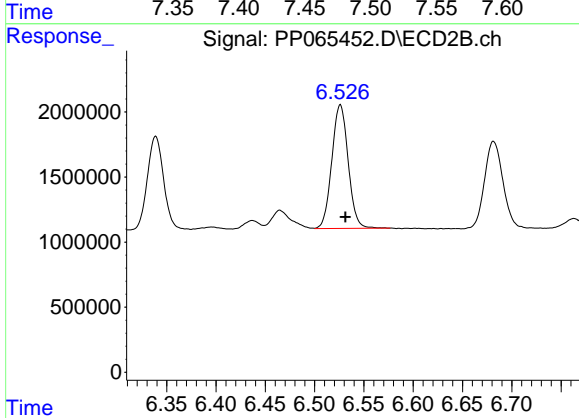
R.T.: 6.339 min
 Delta R.T.: -0.006 min
 Response: 8234316
 Conc: 101.90 ng/ml



#32 AR-1260-2

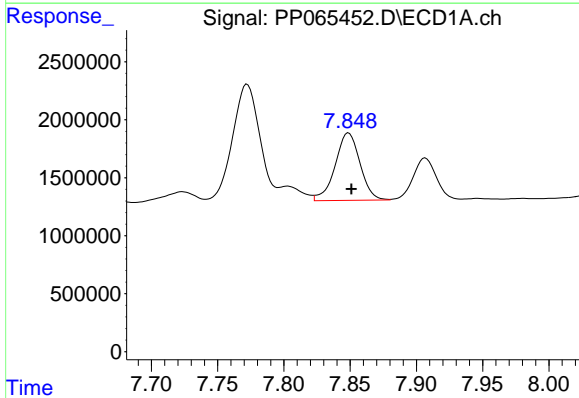
R.T.: 7.490 min
 Delta R.T.: -0.003 min
 Response: 13030858
 Conc: 128.77 ng/ml

Instrument :
 ECD_P
 ClientSampleId :
 Y2-308-0001-1-2



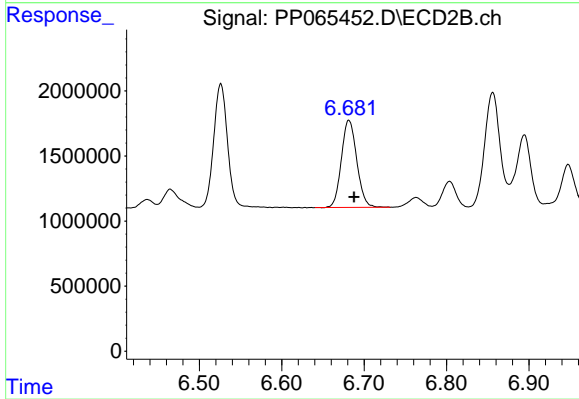
#32 AR-1260-2

R.T.: 6.526 min
 Delta R.T.: -0.005 min
 Response: 10979272
 Conc: 115.40 ng/ml



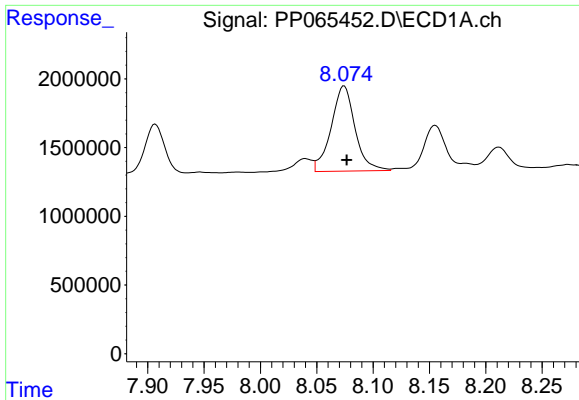
#33 AR-1260-3

R.T.: 7.849 min
 Delta R.T.: -0.002 min
 Response: 7578120
 Conc: 94.74 ng/ml



#33 AR-1260-3

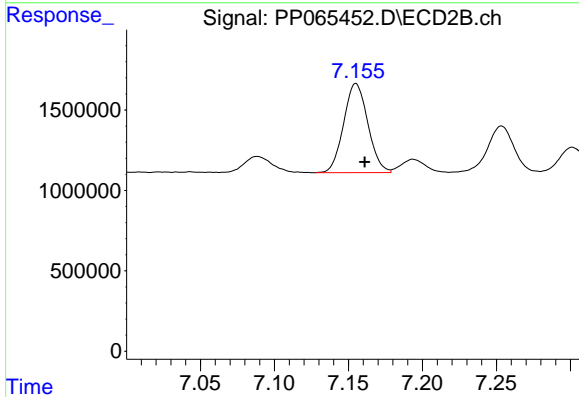
R.T.: 6.681 min
 Delta R.T.: -0.006 min
 Response: 8706091
 Conc: 96.13 ng/ml



#34 AR-1260-4

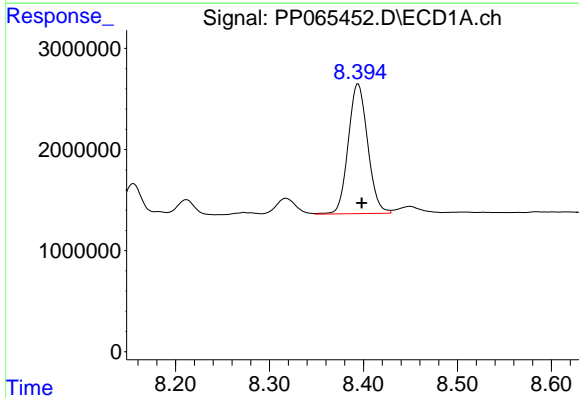
R.T.: 8.074 min
Delta R.T.: -0.002 min
Response: 9150185
Conc: 103.44 ng/ml

Instrument :
ECD_P
ClientSampleId :
Y2-308-0001-1-2



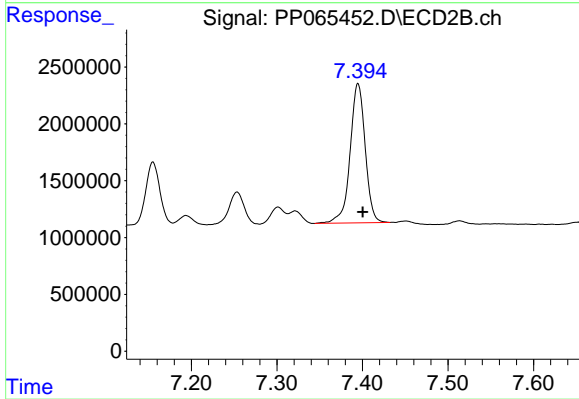
#34 AR-1260-4

R.T.: 7.155 min
Delta R.T.: -0.006 min
Response: 6315871
Conc: 82.40 ng/ml



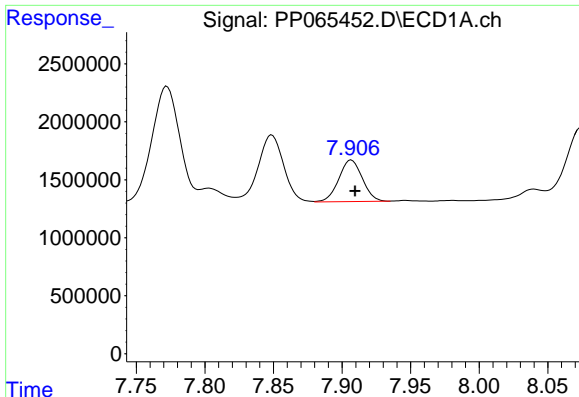
#35 AR-1260-5

R.T.: 8.394 min
Delta R.T.: -0.004 min
Response: 18408999
Conc: 113.27 ng/ml



#35 AR-1260-5

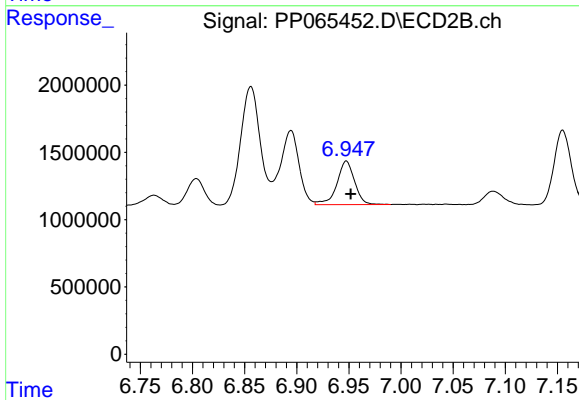
R.T.: 7.395 min
Delta R.T.: -0.006 min
Response: 15023240
Conc: 89.97 ng/ml



#36 AR-1262-1

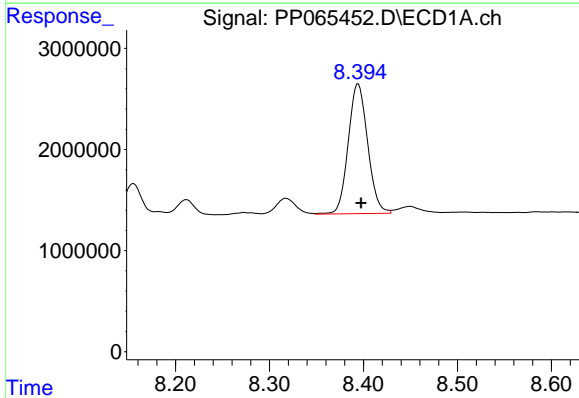
R.T.: 7.907 min
 Delta R.T.: -0.003 min
 Response: 4279138
 Conc: 88.46 ng/ml

Instrument :
 ECD_P
 ClientSampleId :
 Y2-308-0001-1-2



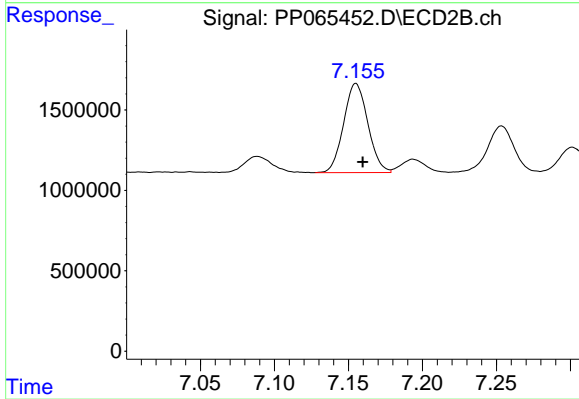
#36 AR-1262-1

R.T.: 6.948 min
 Delta R.T.: -0.004 min
 Response: 3822768
 Conc: 81.03 ng/ml



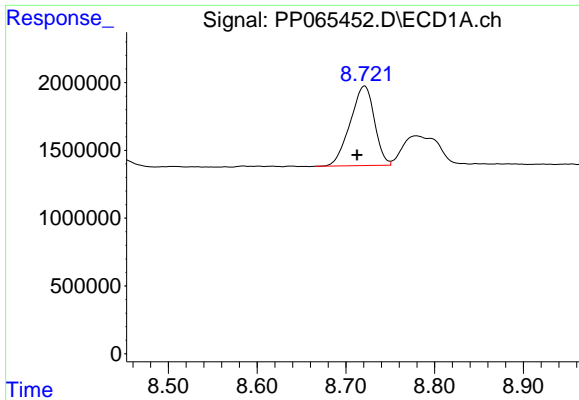
#37 AR-1262-2

R.T.: 8.394 min
 Delta R.T.: -0.003 min
 Response: 18408999
 Conc: 98.16 ng/ml



#37 AR-1262-2

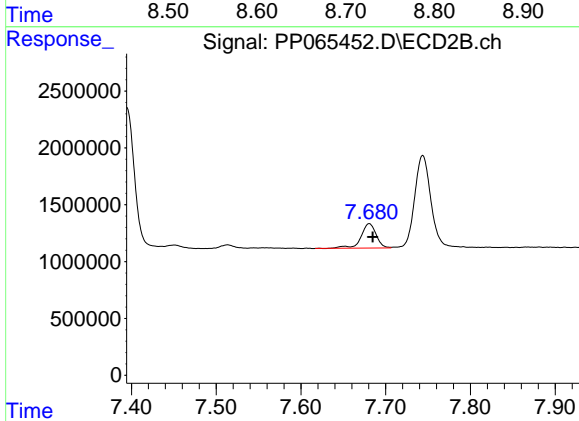
R.T.: 7.155 min
 Delta R.T.: -0.005 min
 Response: 6315871
 Conc: 61.54 ng/ml



#38 AR-1262-3

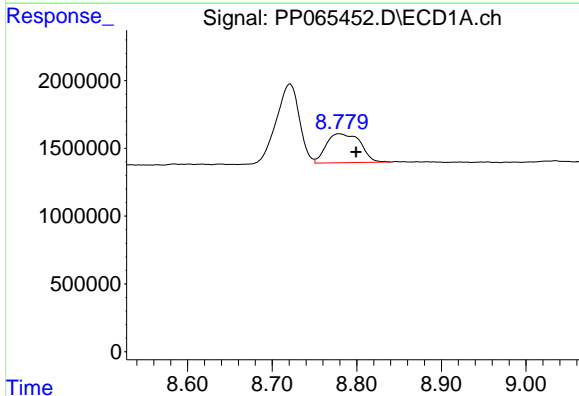
R.T.: 8.721 min
 Delta R.T.: 0.008 min
 Response: 11134906
 Conc: 81.89 ng/ml

Instrument :
 ECD_P
 ClientSampleId :
 Y2-308-0001-1-2



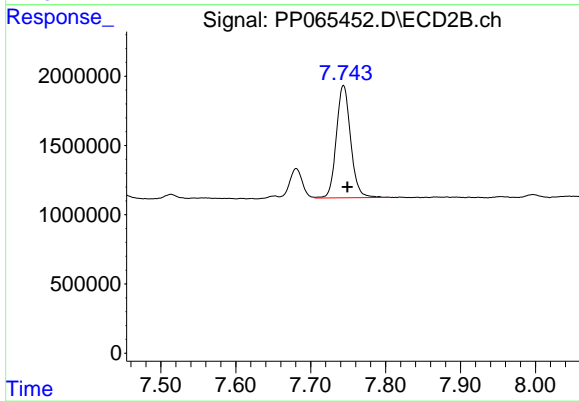
#38 AR-1262-3

R.T.: 7.681 min
 Delta R.T.: -0.004 min
 Response: 2646793
 Conc: 31.75 ng/ml



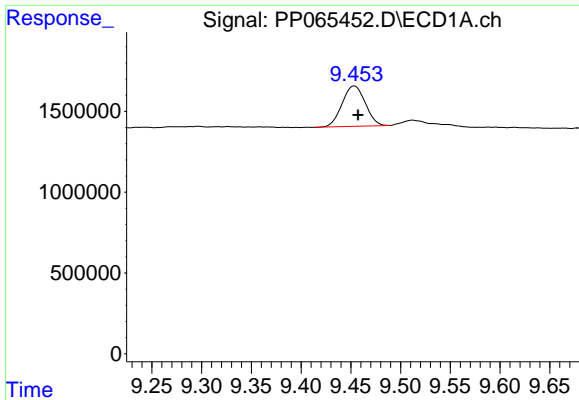
#39 AR-1262-4

R.T.: 8.779 min
 Delta R.T.: -0.020 min
 Response: 5995153
 Conc: 55.45 ng/ml



#39 AR-1262-4

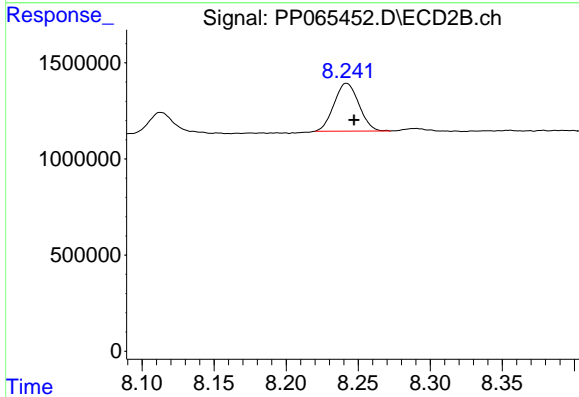
R.T.: 7.744 min
 Delta R.T.: -0.005 min
 Response: 10767682
 Conc: 73.50 ng/ml



#40 AR-1262-5

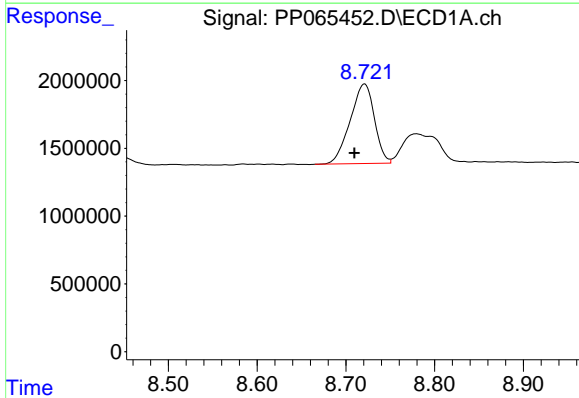
R.T.: 9.454 min
 Delta R.T.: -0.004 min
 Response: 4046602
 Conc: 57.97 ng/ml

Instrument :
 ECD_P
 ClientSampleId :
 Y2-308-0001-1-2



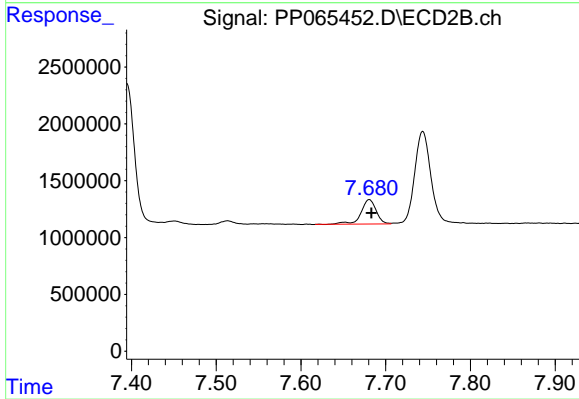
#40 AR-1262-5

R.T.: 8.242 min
 Delta R.T.: -0.005 min
 Response: 2986648
 Conc: 46.64 ng/ml



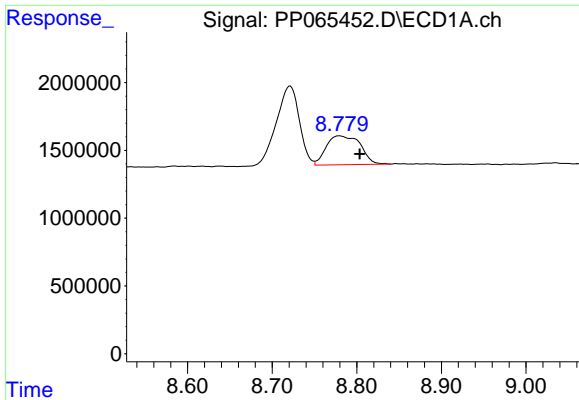
#41 AR-1268-1

R.T.: 8.721 min
 Delta R.T.: 0.012 min
 Response: 11134906
 Conc: 49.63 ng/ml



#41 AR-1268-1

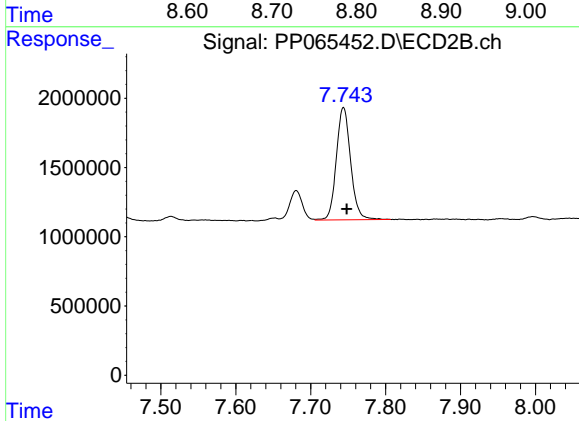
R.T.: 7.681 min
 Delta R.T.: -0.003 min
 Response: 2646793
 Conc: 12.07 ng/ml



#42 AR-1268-2

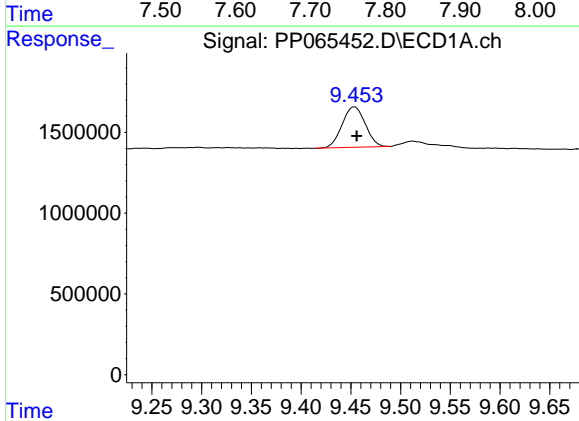
R.T.: 8.779 min
 Delta R.T.: -0.024 min
 Response: 5995153
 Conc: 29.32 ng/ml

Instrument :
 ECD_P
 ClientSampleId :
 Y2-308-0001-1-2



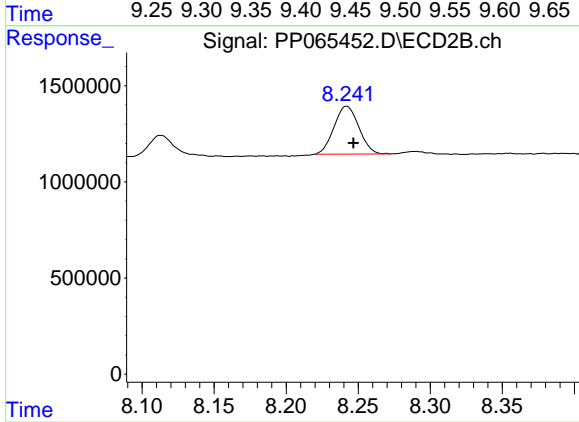
#42 AR-1268-2

R.T.: 7.744 min
 Delta R.T.: -0.004 min
 Response: 10767682
 Conc: 53.40 ng/ml



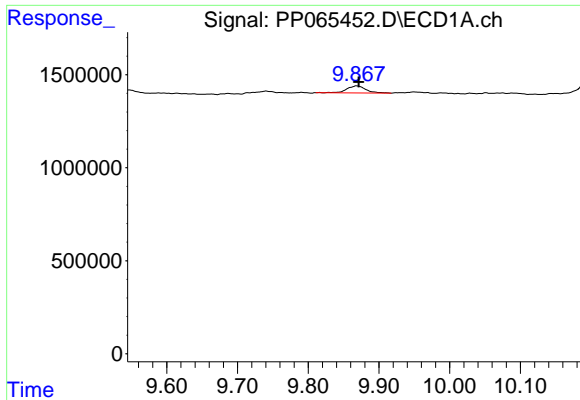
#44 AR-1268-4

R.T.: 9.454 min
 Delta R.T.: -0.002 min
 Response: 4046602
 Conc: 55.11 ng/ml



#44 AR-1268-4

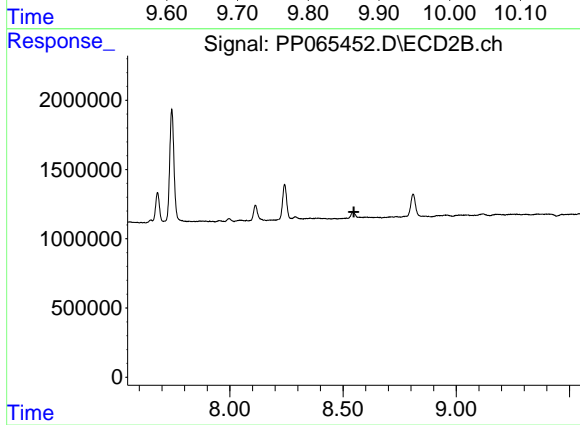
R.T.: 8.242 min
 Delta R.T.: -0.005 min
 Response: 2986648
 Conc: 43.71 ng/ml



#45 AR-1268-5

R.T.: 9.869 min
Delta R.T.: -0.003 min
Response: 691795
Conc: 1.25 ng/ml

Instrument :
ECD_P
ClientSampleId :
Y2-308-0001-1-2



#45 AR-1268-5

R.T.: 0.000 min
Exp R.T. : 8.548 min
Response: 0
Conc: N.D.