

Data Path : Z:\pestpcbsrv\HPCHEM1\ECD\_P\Data\PP060424\  
 Data File : PP065466.D  
 Signal(s) : Signal #1: ECD1A.ch Signal #2: ECD2B.ch  
 Acq On : 04 Jun 2024 16:48  
 Operator : YP\AJ  
 Sample : P2706-03  
 Misc :  
 ALS Vial : 21 Sample Multiplier: 1

Instrument :  
 ECD\_P  
 ClientSampleId :  
 1434

Manual Integrations  
 APPROVED

Reviewed By :Yogesh Patel 06/05/2024  
 Supervised By :Ankita Jodhani 06/05/2024

Integration File signal 1: autoint1.e  
 Integration File signal 2: autoint2.e  
 Quant Time: Jun 05 00:59:23 2024  
 Quant Method : Z:\pestpcbsrv\HPCHEM1\ECD\_P\methods\PP060324.M  
 Quant Title : GC EXTRACTABLES  
 QLast Update : Tue Jun 04 04:29:37 2024  
 Response via : Initial Calibration  
 Integrator: ChemStation

Volume Inj. : 2 µl  
 Signal #1 Phase : ZB-MR1 Signal #2 Phase: ZB-MR2  
 Signal #1 Info : 30Mx0.32mmx 0.50µ Signal #2 Info : 30M x 0.32mm x 0.25µm

Compound	RT#1	RT#2	Resp#1	Resp#2	ng/ml	ng/ml
-----						
System Monitoring Compounds						
1) SA Tetrachlo...	4.471	3.750	42776958	34789936	25.701	23.235
2) SA Decachlor...	10.210	8.812	42306890	34227898	25.651	23.395
Target Compounds						
16) L4 AR-1242-1	5.635	4.847	6245944	5388404	134.582	135.070
17) L4 AR-1242-2	5.660	4.866	8760236	4367819	128.166	77.060 #
18) L4 AR-1242-3	5.720	5.047	5200756	3121029	117.557	102.661
19) L4 AR-1242-4	5.817	5.127	5352874	7585582	152.259	236.870 #
20) L4 AR-1242-5	6.561	5.656	3657124	12149367	97.382	319.751 #
26) L6 AR-1254-1	6.488	5.656	12961274	12149367	187.138m	149.659
27) L6 AR-1254-2	6.708	5.803	10781444	6467044	102.159	88.707
28) L6 AR-1254-3	7.073	6.210	11569764	10003919	105.017	85.232
29) L6 AR-1254-4	7.358	6.438	7042225	5159376	93.847	80.776
30) L6 AR-1254-5	7.774	6.858	5234686	4872822	59.016m	46.303

(f)=RT Delta > 1/2 Window (#)=Amounts differ by > 25% (m)=manual int.

Data Path : Z:\pestpcbsrv\HPCHEM1\ECD\_P\Data\PP060424\  
 Data File : PP065466.D  
 Signal(s) : Signal #1: ECD1A.ch Signal #2: ECD2B.ch  
 Acq On : 04 Jun 2024 16:48  
 Operator : YP\AJ  
 Sample : P2706-03  
 Misc :  
 ALS Vial : 21 Sample Multiplier: 1

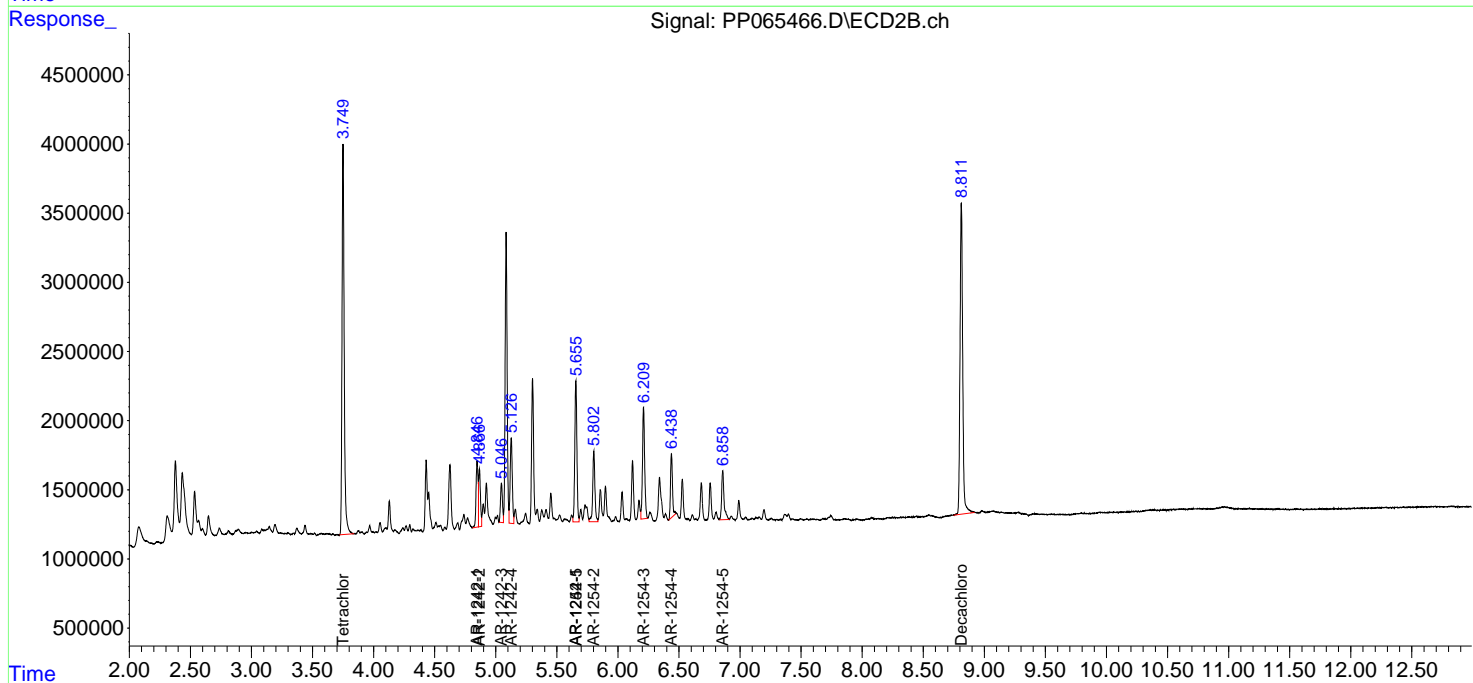
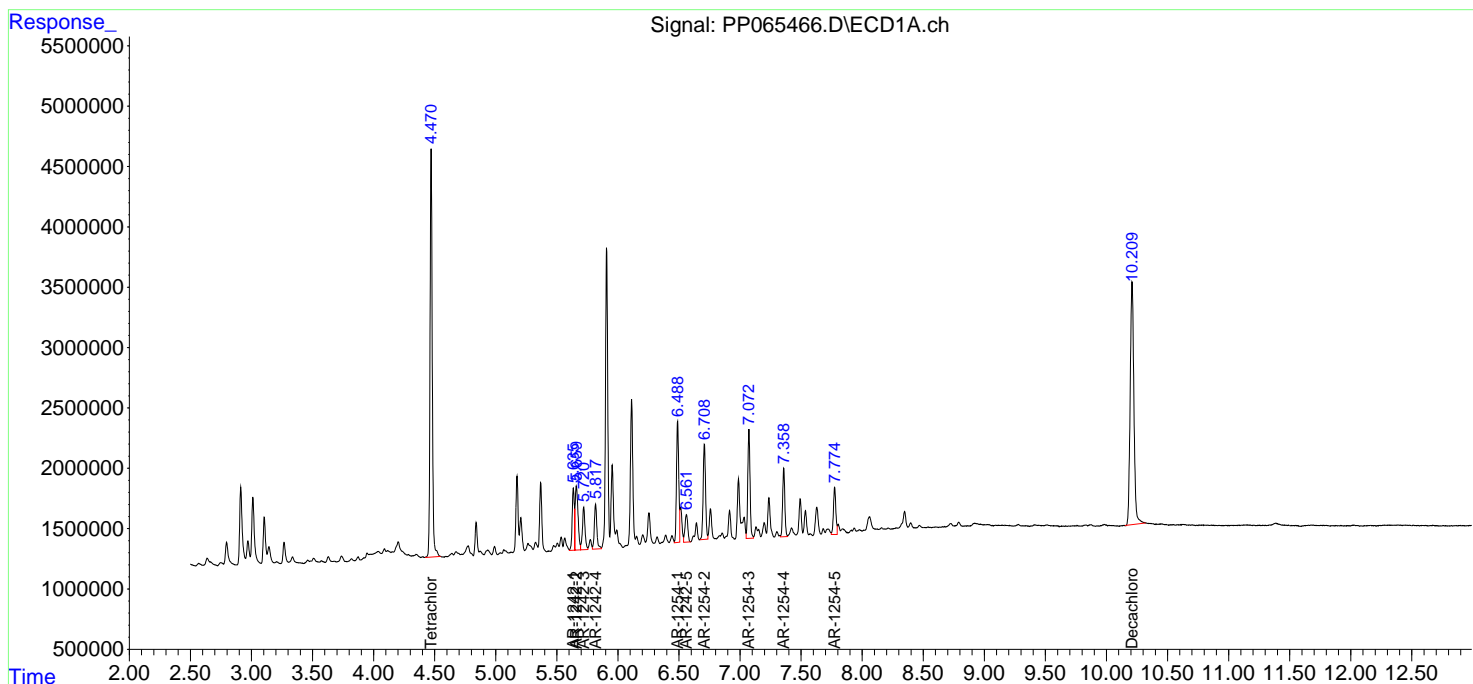
**Instrument :**  
 ECD\_P  
**ClientSampleId :**  
 1434

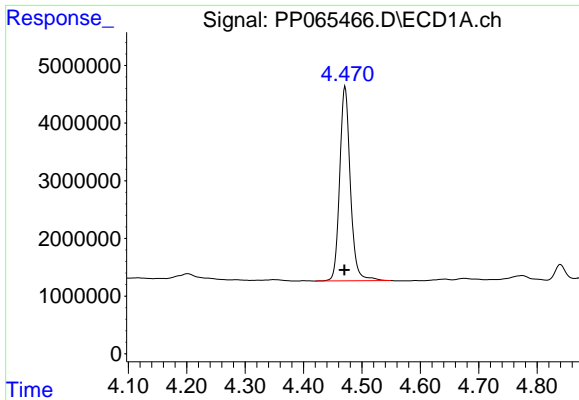
**Manual Integrations**  
**APPROVED**

Reviewed By :Yogesh Patel 06/05/2024  
 Supervised By :Ankita Jodhani 06/05/2024

Integration File signal 1: autoint1.e  
 Integration File signal 2: autoint2.e  
 Quant Time: Jun 05 00:59:23 2024  
 Quant Method : Z:\pestpcbsrv\HPCHEM1\ECD\_P\methods\PP060324.M  
 Quant Title : GC EXTRACTABLES  
 QLast Update : Tue Jun 04 04:29:37 2024  
 Response via : Initial Calibration  
 Integrator: ChemStation

Volume Inj. : 2 µl  
 Signal #1 Phase : ZB-MR1 Signal #2 Phase: ZB-MR2  
 Signal #1 Info : 30Mx0.32mmx 0.50µ Signal #2 Info : 30M x 0.32mm x 0.25µm



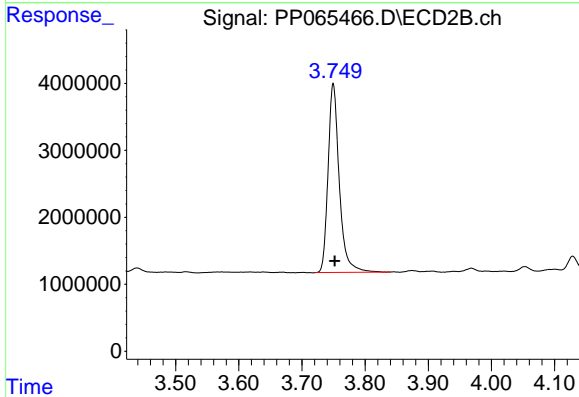


#1 Tetrachloro-m-xylene  
 R.T.: 4.471 min  
 Delta R.T.: 0.001 min  
 Response: 42776958  
 Conc: 25.70 ng/ml

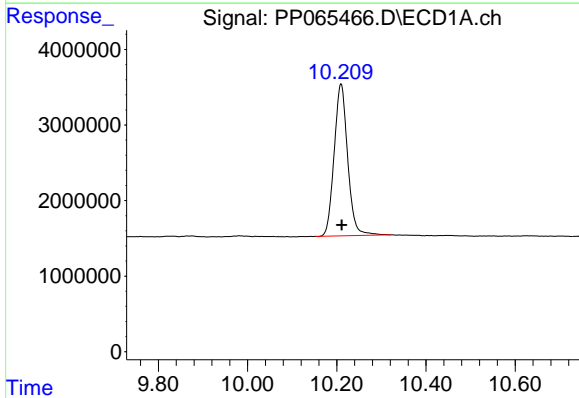
Instrument :  
 ECD\_P  
 ClientSampleId :  
 1434

Manual Integrations  
 APPROVED

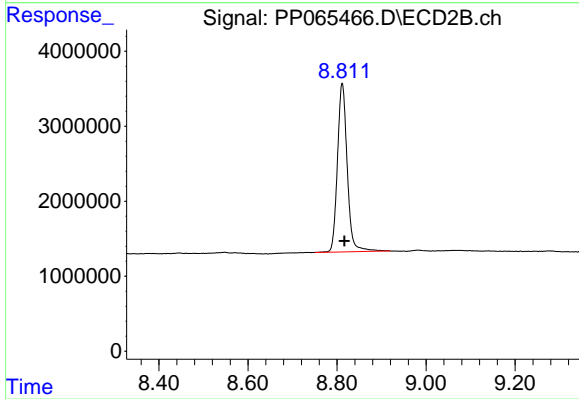
Reviewed By :Yogesh Patel 06/05/2024  
 Supervised By :Ankita Jodhani 06/05/2024



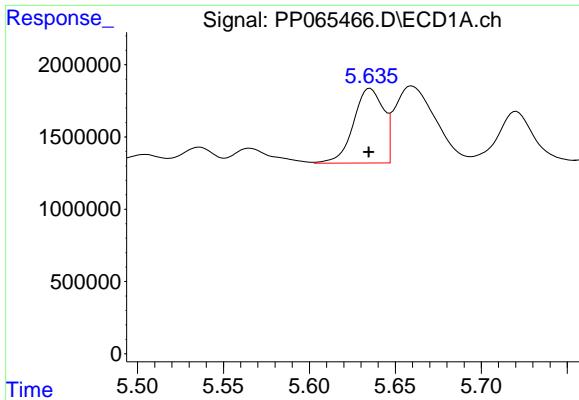
#1 Tetrachloro-m-xylene  
 R.T.: 3.750 min  
 Delta R.T.: -0.002 min  
 Response: 34789936  
 Conc: 23.23 ng/ml



#2 Decachlorobiphenyl  
 R.T.: 10.210 min  
 Delta R.T.: -0.002 min  
 Response: 42306890  
 Conc: 25.65 ng/ml



#2 Decachlorobiphenyl  
 R.T.: 8.812 min  
 Delta R.T.: -0.005 min  
 Response: 34227898  
 Conc: 23.39 ng/ml



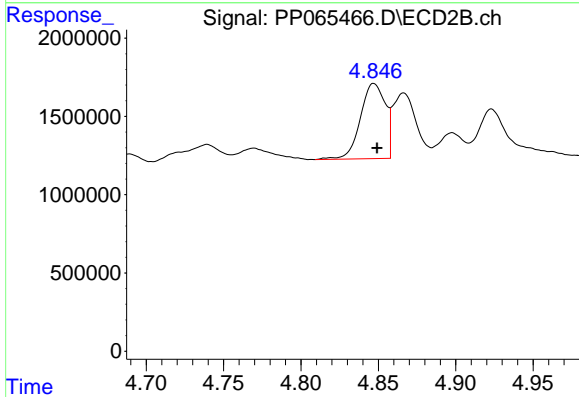
#16 AR-1242-1

R.T.: 5.635 min  
 Delta R.T.: 0.000 min  
 Response: 6245944  
 Conc: 134.58 ng/ml

Instrument :  
 ECD\_P  
 ClientSampleId :  
 1434

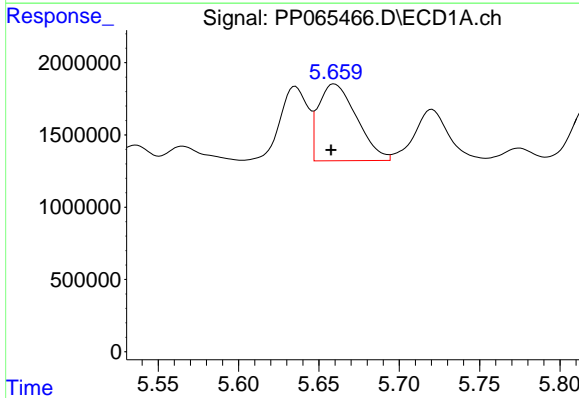
Manual Integrations  
 APPROVED

Reviewed By :Yogesh Patel 06/05/2024  
 Supervised By :Ankita Jodhani 06/05/2024



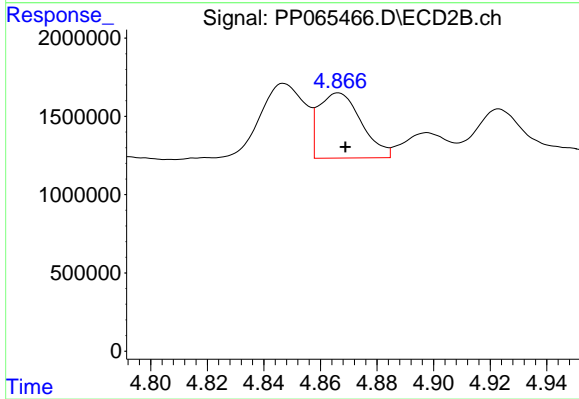
#16 AR-1242-1

R.T.: 4.847 min  
 Delta R.T.: -0.002 min  
 Response: 5388404  
 Conc: 135.07 ng/ml



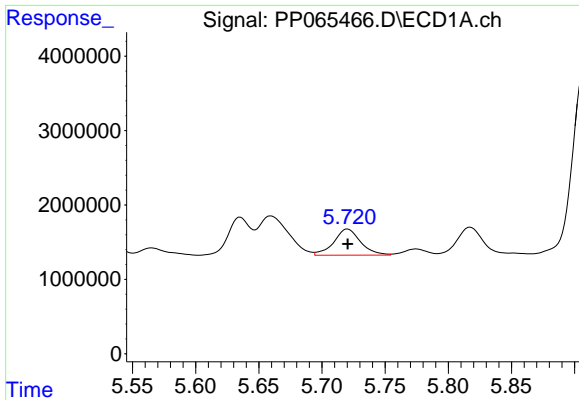
#17 AR-1242-2

R.T.: 5.660 min  
 Delta R.T.: 0.002 min  
 Response: 8760236  
 Conc: 128.17 ng/ml



#17 AR-1242-2

R.T.: 4.866 min  
 Delta R.T.: -0.002 min  
 Response: 4367819  
 Conc: 77.06 ng/ml



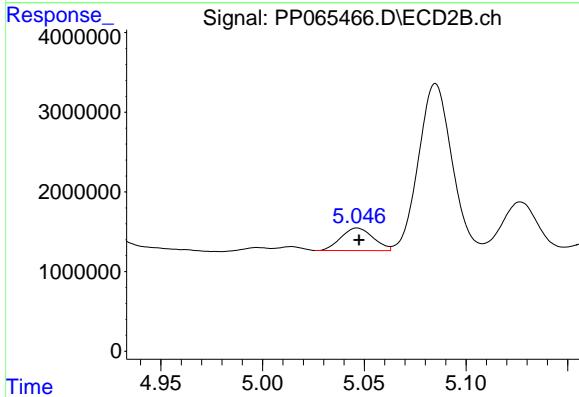
#18 AR-1242-3

R.T.: 5.720 min  
 Delta R.T.: 0.000 min  
 Response: 5200756  
 Conc: 117.56 ng/ml

Instrument : ECD\_P  
 ClientSampleId : 1434

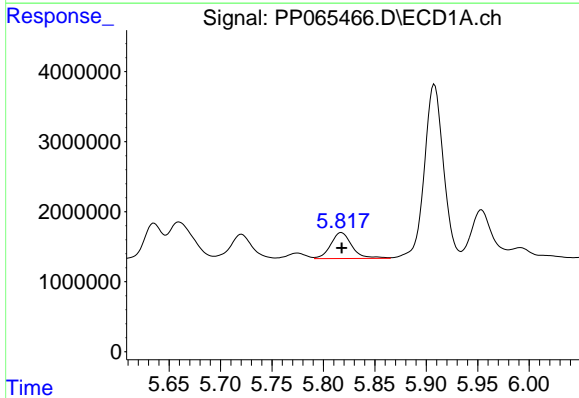
Manual Integrations  
 APPROVED

Reviewed By :Yogesh Patel 06/05/2024  
 Supervised By :Ankita Jodhani 06/05/2024



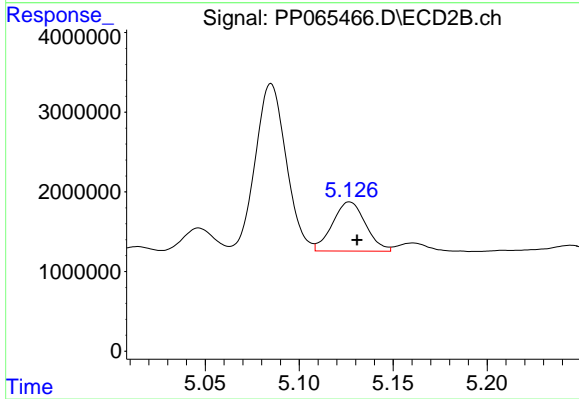
#18 AR-1242-3

R.T.: 5.047 min  
 Delta R.T.: 0.000 min  
 Response: 3121029  
 Conc: 102.66 ng/ml



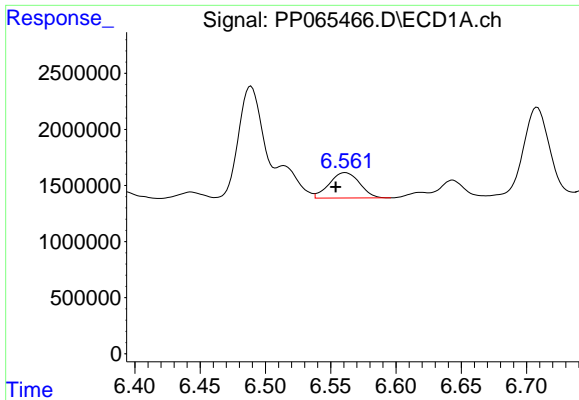
#19 AR-1242-4

R.T.: 5.817 min  
 Delta R.T.: 0.000 min  
 Response: 5352874  
 Conc: 152.26 ng/ml



#19 AR-1242-4

R.T.: 5.127 min  
 Delta R.T.: -0.004 min  
 Response: 7585582  
 Conc: 236.87 ng/ml



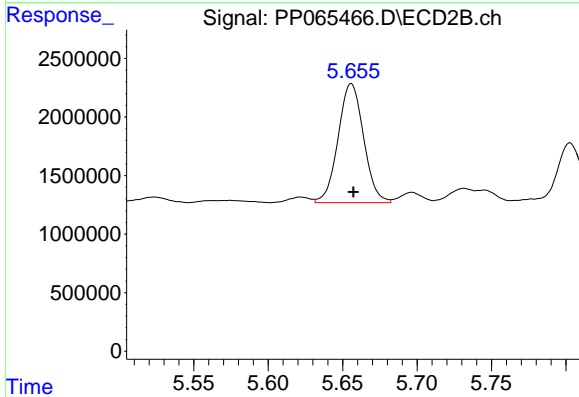
#20 AR-1242-5

R.T.: 6.561 min  
 Delta R.T.: 0.007 min  
 Response: 3657124  
 Conc: 97.38 ng/ml

Instrument :  
 ECD\_P  
 ClientSampleId :  
 1434

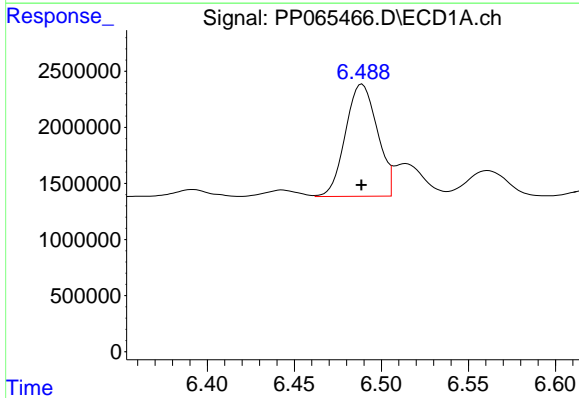
Manual Integrations  
 APPROVED

Reviewed By :Yogesh Patel 06/05/2024  
 Supervised By :Ankita Jodhani 06/05/2024



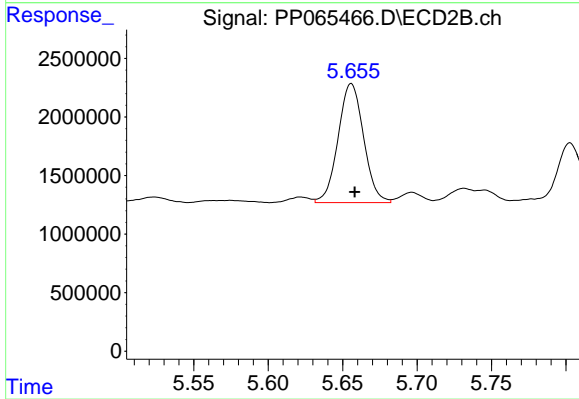
#20 AR-1242-5

R.T.: 5.656 min  
 Delta R.T.: -0.001 min  
 Response: 12149367  
 Conc: 319.75 ng/ml



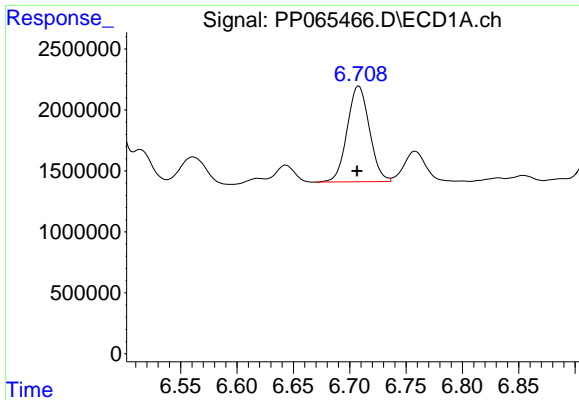
#26 AR-1254-1

R.T.: 6.488 min  
 Delta R.T.: 0.000 min  
 Response: 12961274  
 Conc: 187.14 ng/ml m



#26 AR-1254-1

R.T.: 5.656 min  
 Delta R.T.: -0.002 min  
 Response: 12149367  
 Conc: 149.66 ng/ml



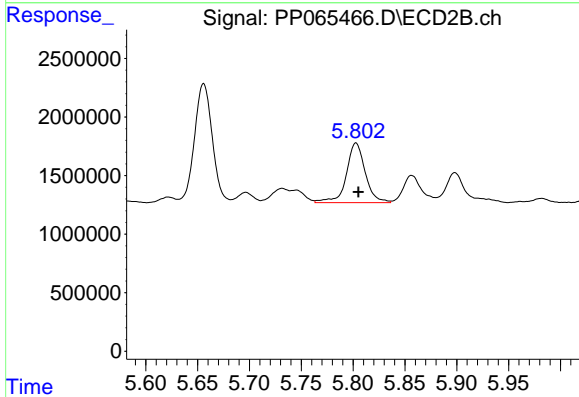
#27 AR-1254-2

R.T.: 6.708 min  
 Delta R.T.: 0.001 min  
 Response: 10781444  
 Conc: 102.16 ng/ml

Instrument :  
 ECD\_P  
 ClientSampleId :  
 1434

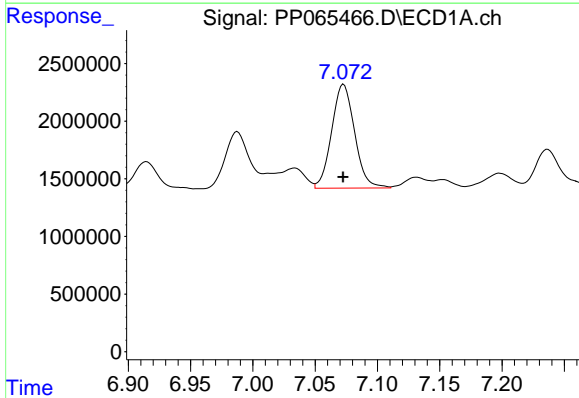
Manual Integrations  
 APPROVED

Reviewed By :Yogesh Patel 06/05/2024  
 Supervised By :Ankita Jodhani 06/05/2024



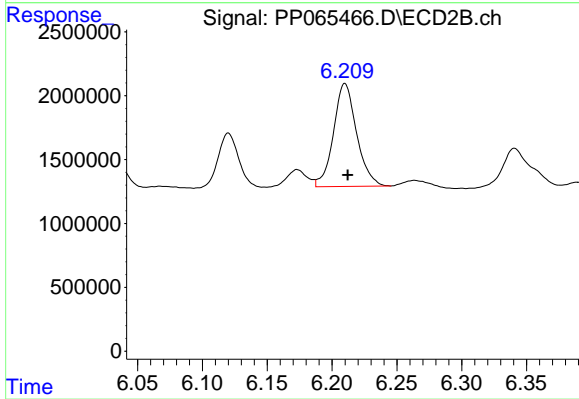
#27 AR-1254-2

R.T.: 5.803 min  
 Delta R.T.: -0.002 min  
 Response: 6467044  
 Conc: 88.71 ng/ml



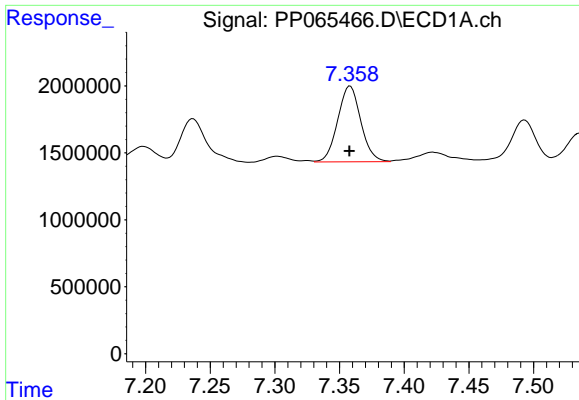
#28 AR-1254-3

R.T.: 7.073 min  
 Delta R.T.: 0.000 min  
 Response: 11569764  
 Conc: 105.02 ng/ml



#28 AR-1254-3

R.T.: 6.210 min  
 Delta R.T.: -0.002 min  
 Response: 10003919  
 Conc: 85.23 ng/ml



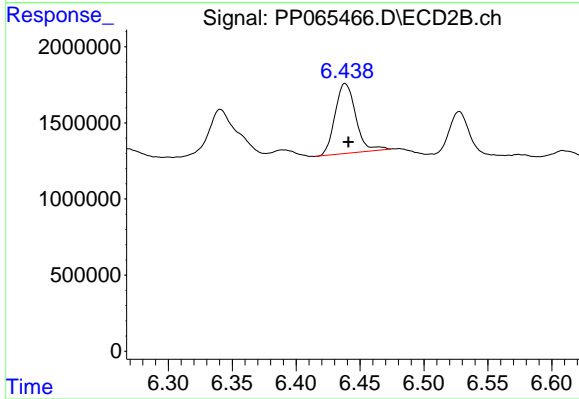
#29 AR-1254-4

R.T.: 7.358 min  
 Delta R.T.: 0.000 min  
 Response: 7042225  
 Conc: 93.85 ng/ml

Instrument :  
 ECD\_P  
 ClientSampleId :  
 1434

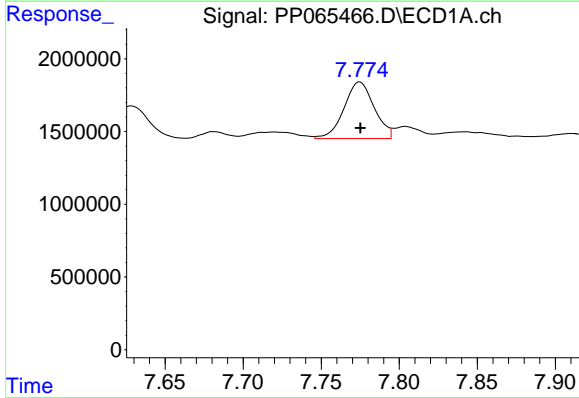
Manual Integrations  
 APPROVED

Reviewed By :Yogesh Patel 06/05/2024  
 Supervised By :Ankita Jodhani 06/05/2024



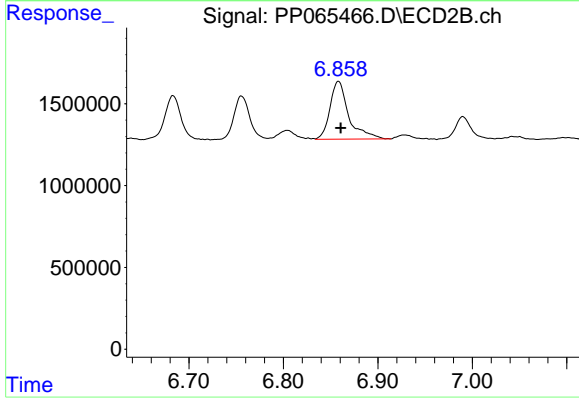
#29 AR-1254-4

R.T.: 6.438 min  
 Delta R.T.: -0.003 min  
 Response: 5159376  
 Conc: 80.78 ng/ml



#30 AR-1254-5

R.T.: 7.774 min  
 Delta R.T.: 0.000 min  
 Response: 5234686  
 Conc: 59.02 ng/ml m



#30 AR-1254-5

R.T.: 6.858 min  
 Delta R.T.: -0.002 min  
 Response: 4872822  
 Conc: 46.30 ng/ml