

Data Path : Z:\pestpcbsrv\HPCHEM1\ECD_P\Data\PP060524\
 Data File : PP065513.D
 Signal(s) : Signal #1: ECD1A.ch Signal #2: ECD2B.ch
 Acq On : 06 Jun 2024 01:09
 Operator : YP\AJ
 Sample : AR1268ICC750
 Misc :
 ALS Vial : 27 Sample Multiplier: 1

Instrument :
 ECD_P
ClientSampleId :
 AR1268ICC750

Integration File signal 1: autoint1.e
 Integration File signal 2: autoint2.e
 Quant Time: Jun 06 04:30:57 2024
 Quant Method : Z:\pestpcbsrv\HPCHEM1\ECD_P\methods\PP060524.M
 Quant Title : GC EXTRACTABLES
 QLast Update : Thu Jun 06 04:29:03 2024
 Response via : Initial Calibration
 Integrator: ChemStation

Volume Inj. : 2 µl
 Signal #1 Phase : ZB-MR1 Signal #2 Phase: ZB-MR2
 Signal #1 Info : 30Mx0.32mmx 0.50µ Signal #2 Info : 30M x 0.32mm x 0.25µm

Compound	RT#1	RT#2	Resp#1	Resp#2	ng/ml	ng/ml

System Monitoring Compounds						
1) SA Tetrachlo...	4.826	4.070	142.9E6	206.7E6	74.252	73.319
2) SA Decachlor...	10.842	9.260	237.0E6	181.4E6	72.291	72.572
Target Compounds						
41) L9 AR-1268-1	9.168	8.038	185.0E6	167.3E6	726.809	725.935
42) L9 AR-1268-2	9.273	8.103	173.1E6	154.1E6	725.804	733.258
43) L9 AR-1268-3	9.528	8.325	148.6E6	126.9E6	727.856	723.983
44) L9 AR-1268-4	9.995	8.635	61712266	55162968	731.327	717.321
45) L9 AR-1268-5	10.459	8.965	494.2E6	394.1E6	736.844	736.892

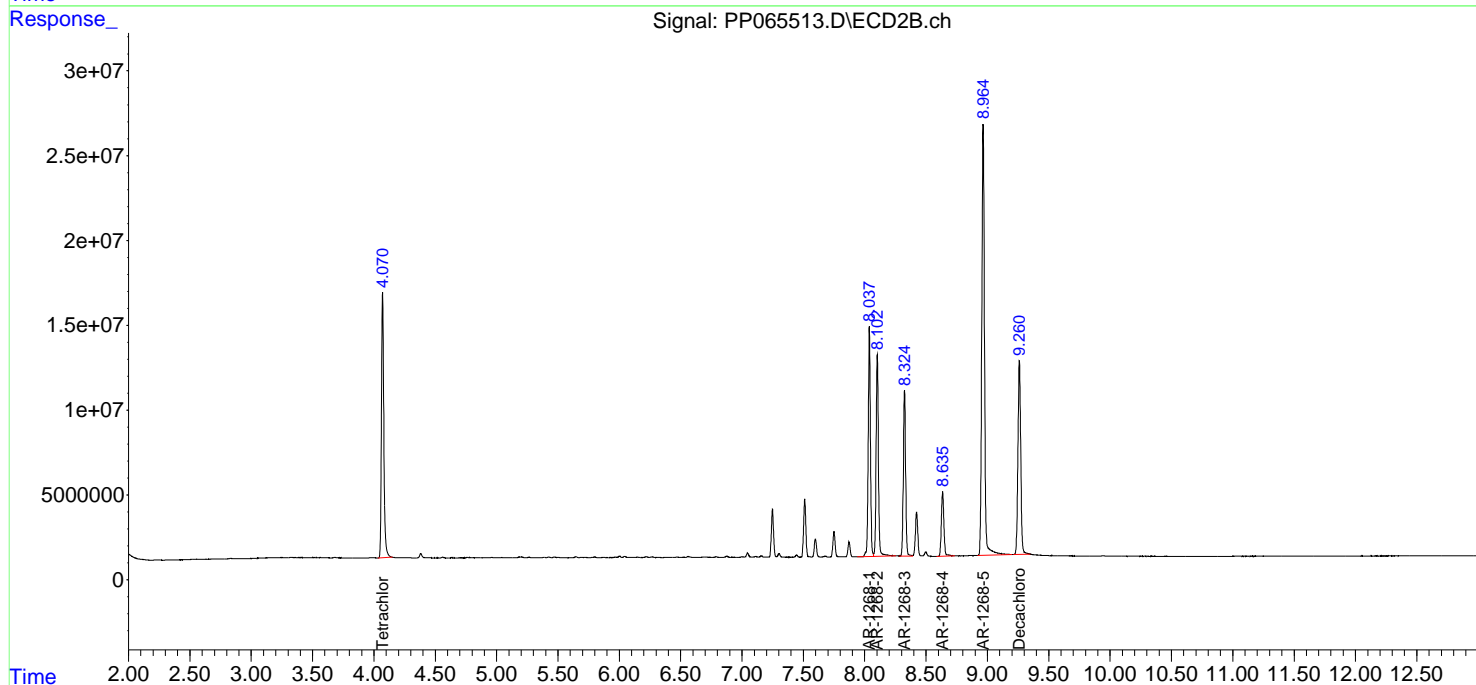
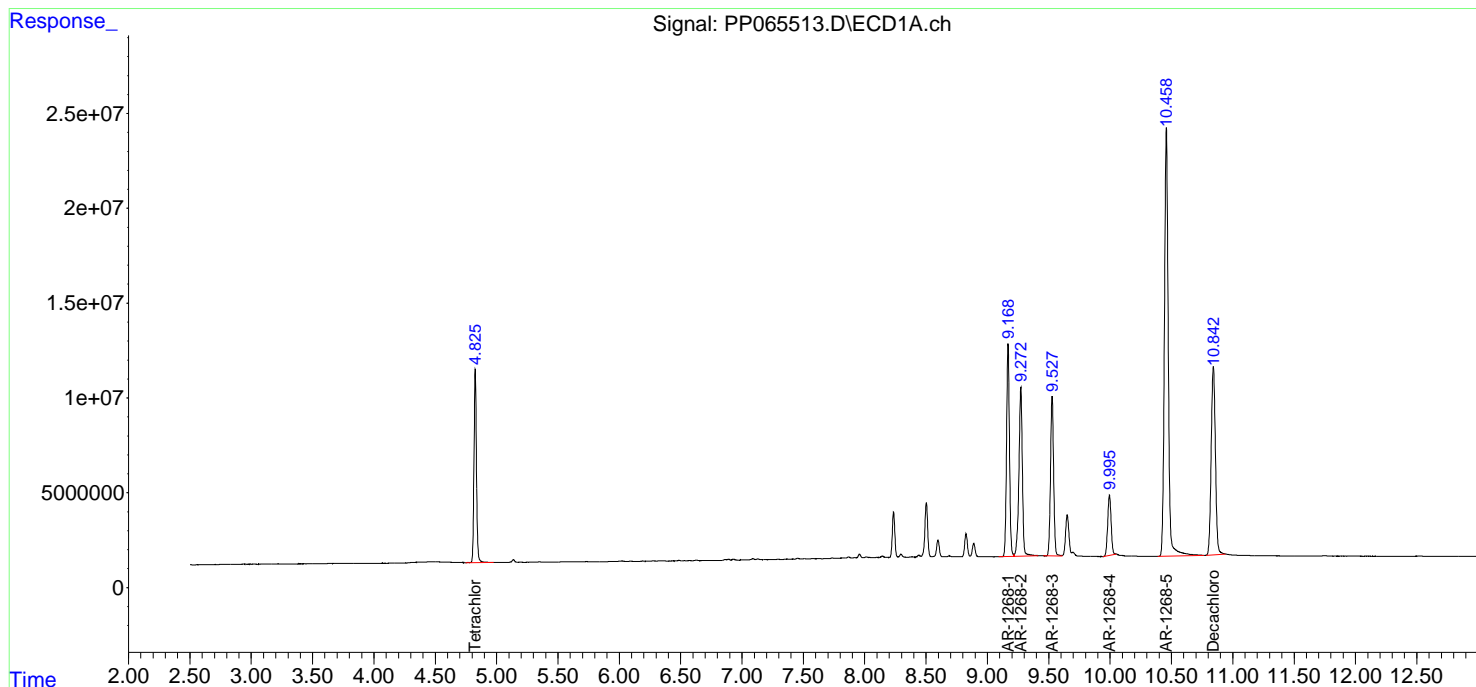
(f)=RT Delta > 1/2 Window (#)=Amounts differ by > 25% (m)=manual int.

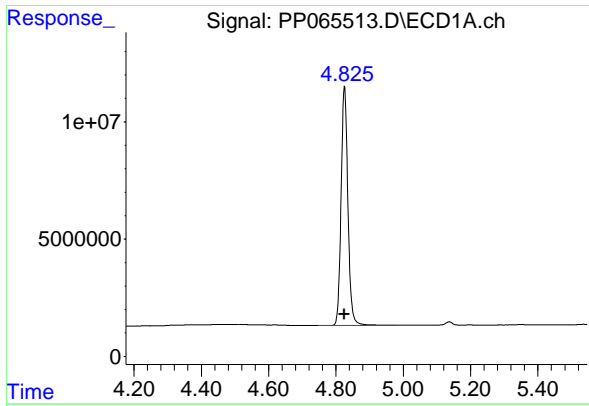
Data Path : Z:\pestpcbsrv\HPCHEM1\ECD_P\Data\PP060524\
 Data File : PP065513.D
 Signal(s) : Signal #1: ECD1A.ch Signal #2: ECD2B.ch
 Acq On : 06 Jun 2024 01:09
 Operator : YP\AJ
 Sample : AR1268ICC750
 Misc :
 ALS Vial : 27 Sample Multiplier: 1

Instrument :
 ECD_P
 ClientSampleId :
 AR1268ICC750

Integration File signal 1: autoint1.e
 Integration File signal 2: autoint2.e
 Quant Time: Jun 06 04:30:57 2024
 Quant Method : Z:\pestpcbsrv\HPCHEM1\ECD_P\methods\PP060524.M
 Quant Title : GC EXTRACTABLES
 QLast Update : Thu Jun 06 04:29:03 2024
 Response via : Initial Calibration
 Integrator: ChemStation

Volume Inj. : 2 µl
 Signal #1 Phase : ZB-MR1 Signal #2 Phase: ZB-MR2
 Signal #1 Info : 30Mx0.32mmx 0.50µm Signal #2 Info : 30M x 0.32mm x 0.25µm

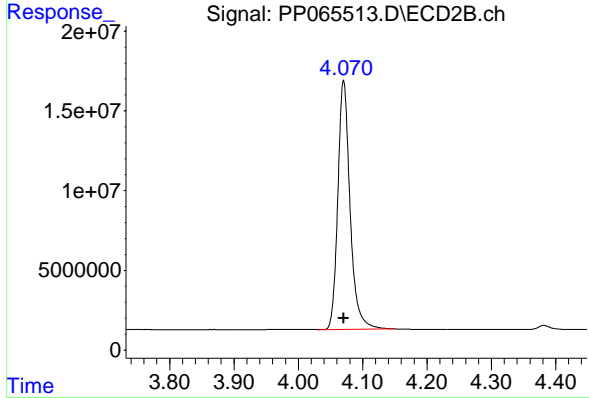




#1 Tetrachloro-m-xylene

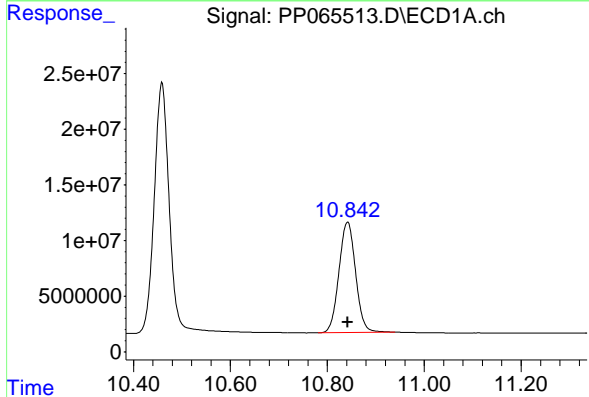
R.T.: 4.826 min
 Delta R.T.: 0.000 min
 Response: 142910329
 Conc: 74.25 ng/ml

Instrument :
 ECD_P
 ClientSampleId :
 AR1268ICC750



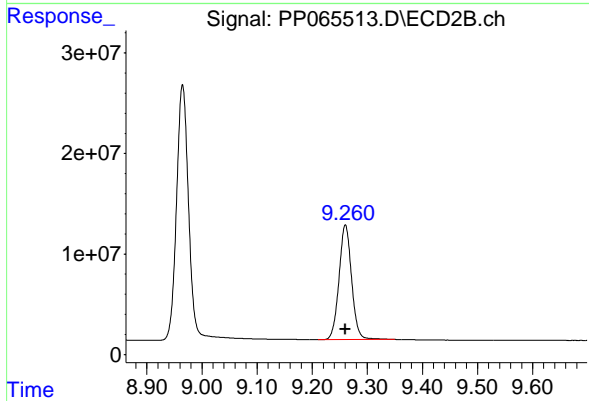
#1 Tetrachloro-m-xylene

R.T.: 4.070 min
 Delta R.T.: 0.000 min
 Response: 206663729
 Conc: 73.32 ng/ml



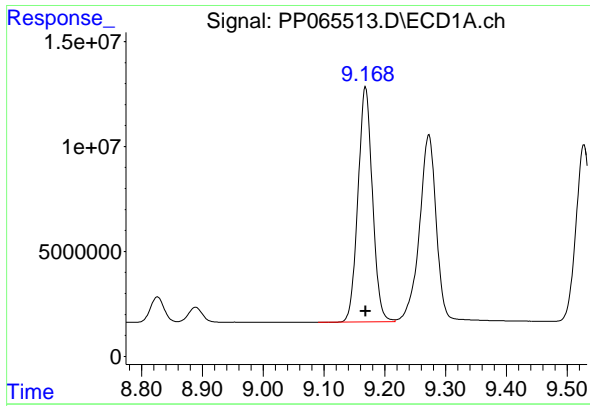
#2 Decachlorobiphenyl

R.T.: 10.842 min
 Delta R.T.: 0.000 min
 Response: 236958811
 Conc: 72.29 ng/ml



#2 Decachlorobiphenyl

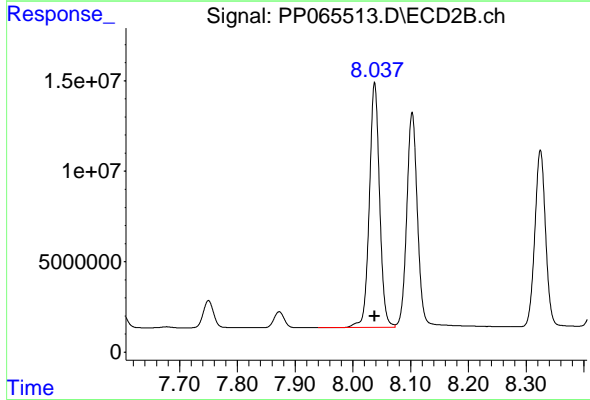
R.T.: 9.260 min
 Delta R.T.: 0.000 min
 Response: 181371716
 Conc: 72.57 ng/ml



#41 AR-1268-1

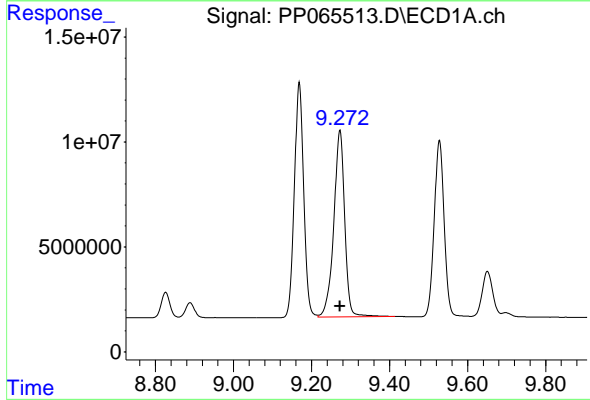
R.T.: 9.168 min
 Delta R.T.: 0.000 min
 Response: 184982529
 Conc: 726.81 ng/ml

Instrument :
 ECD_P
 ClientSampleId :
 AR1268ICC750



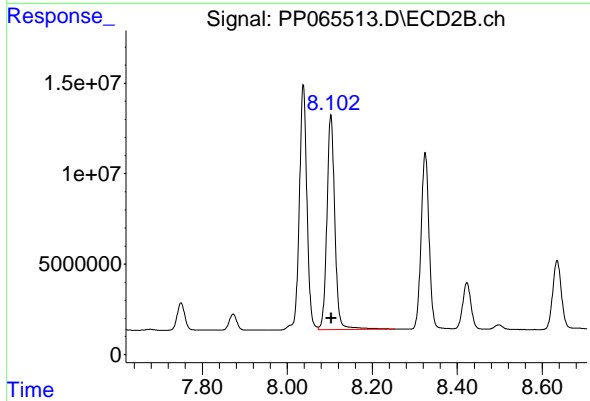
#41 AR-1268-1

R.T.: 8.038 min
 Delta R.T.: 0.000 min
 Response: 167300947
 Conc: 725.94 ng/ml



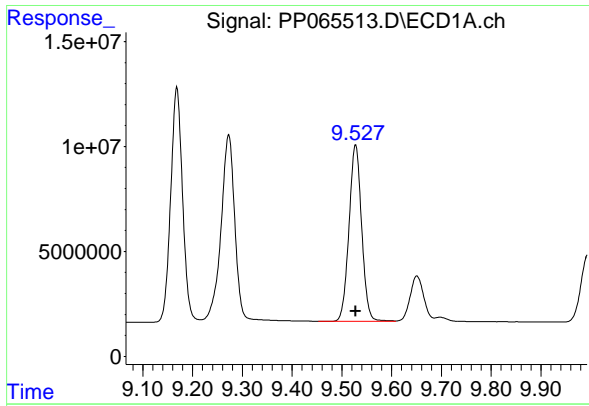
#42 AR-1268-2

R.T.: 9.273 min
 Delta R.T.: 0.000 min
 Response: 173131245
 Conc: 725.80 ng/ml



#42 AR-1268-2

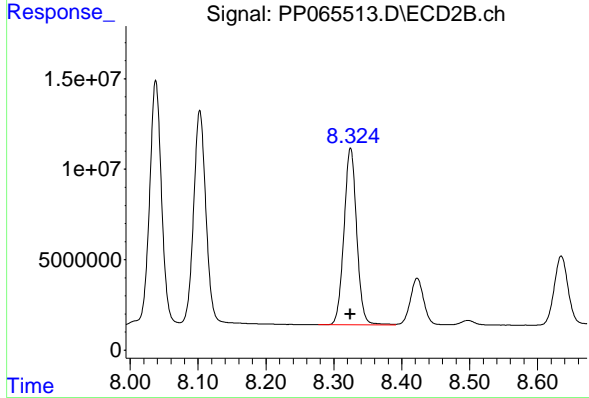
R.T.: 8.103 min
 Delta R.T.: -0.001 min
 Response: 154101059
 Conc: 733.26 ng/ml



#43 AR-1268-3

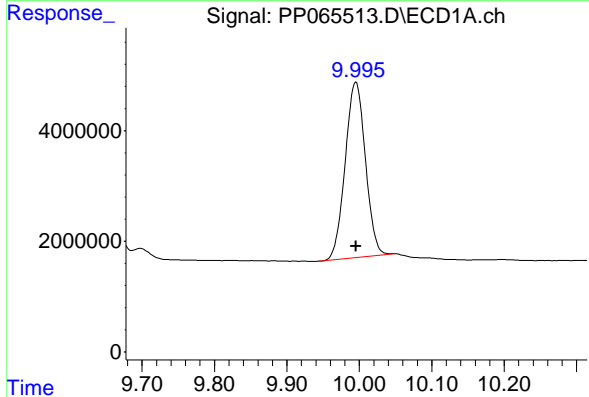
R.T.: 9.528 min
 Delta R.T.: 0.000 min
 Response: 148608349
 Conc: 727.86 ng/ml

Instrument :
 ECD_P
 ClientSampleId :
 AR1268ICC750



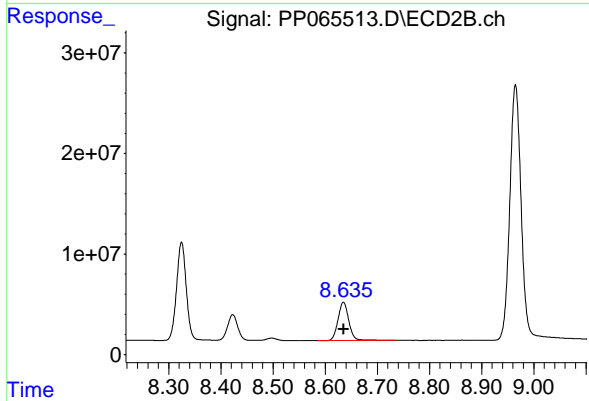
#43 AR-1268-3

R.T.: 8.325 min
 Delta R.T.: 0.000 min
 Response: 126917413
 Conc: 723.98 ng/ml



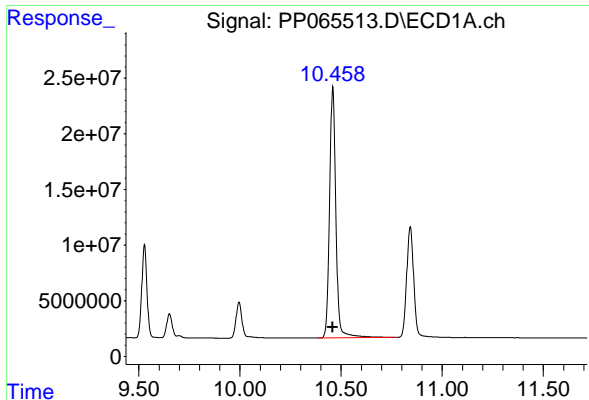
#44 AR-1268-4

R.T.: 9.995 min
 Delta R.T.: 0.000 min
 Response: 61712266
 Conc: 731.33 ng/ml



#44 AR-1268-4

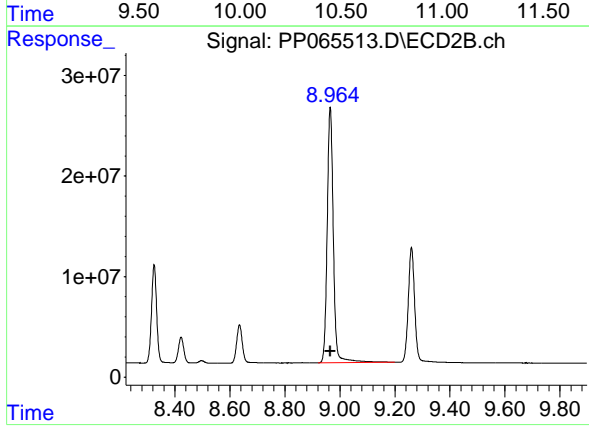
R.T.: 8.635 min
 Delta R.T.: 0.000 min
 Response: 55162968
 Conc: 717.32 ng/ml



#45 AR-1268-5

R.T.: 10.459 min
Delta R.T.: -0.001 min
Response: 494232559
Conc: 736.84 ng/ml

Instrument :
ECD_P
ClientSampleId :
AR1268ICC750



#45 AR-1268-5

R.T.: 8.965 min
Delta R.T.: 0.000 min
Response: 394127805
Conc: 736.89 ng/ml