

Data Path : Z:\pestpcbsrv\HPCHEM1\ECD_P\Data\PP060525\
 Data File : PP072647.D
 Signal(s) : Signal #1: ECD1A.ch Signal #2: ECD2B.ch
 Acq On : 05 Jun 2025 08:57
 Operator : YP\AJ
 Sample : AR1660CCC500
 Misc :
 ALS Vial : 3 Sample Multiplier: 1

Instrument :
 ECD_P
ClientSampleId :
 AR1660CCC500

Manual Integrations
APPROVED
 Reviewed By :Yogesh Patel 06/05/2025
 Supervised By :mohammad ahmed 06/09/2025

Integration File signal 1: autoint1.e
 Integration File signal 2: autoint2.e
 Quant Time: Jun 05 12:31:57 2025
 Quant Method : Z:\pestpcbsrv\HPCHEM1\ECD_P\methods\PP051925.M
 Quant Title : GC EXTRACTABLES
 QLast Update : Sat May 24 03:32:20 2025
 Response via : Initial Calibration
 Integrator: ChemStation

Volume Inj. : 2 µl
 Signal #1 Phase : ZB-MR1 Signal #2 Phase: ZB-MR2
 Signal #1 Info : 30Mx0.32mmx 0.50µ Signal #2 Info : 30M x 0.32mm x 0.25µm

| Compound | RT#1 | RT#2 | Resp#1 | Resp#2 | ng/ml | ng/ml |
|-----------------------------|--------|-------|----------|----------|---------|----------|
| ----- | | | | | | |
| System Monitoring Compounds | | | | | | |
| 1) SA Tetrachlo... | 4.501 | 3.794 | 98258619 | 82407037 | 48.865 | 51.557 |
| 2) SA Decachlor... | 10.199 | 8.807 | 80465028 | 57575647 | 49.392m | 54.388m |
| Target Compounds | | | | | | |
| 3) L1 AR-1016-1 | 5.653 | 4.874 | 32156269 | 30366096 | 428.273 | 494.324 |
| 4) L1 AR-1016-2 | 5.675 | 4.893 | 50797983 | 44692788 | 474.784 | 509.091 |
| 5) L1 AR-1016-3 | 5.737 | 5.069 | 30895443 | 24341653 | 471.219 | 510.795 |
| 6) L1 AR-1016-4 | 5.833 | 5.111 | 25882047 | 19482956 | 485.865 | 512.099 |
| 7) L1 AR-1016-5 | 6.127 | 5.325 | 23473243 | 27250586 | 479.935 | 546.932 |
| 31) L7 AR-1260-1 | 7.243 | 6.356 | 45254768 | 42909216 | 483.518 | 538.021 |
| 32) L7 AR-1260-2 | 7.497 | 6.545 | 67218522 | 51422275 | 468.455 | 507.012 |
| 33) L7 AR-1260-3 | 7.855 | 6.697 | 53487984 | 47993261 | 469.725 | 552.267m |
| 34) L7 AR-1260-4 | 8.079 | 7.167 | 48984616 | 38634230 | 456.509 | 535.910 |
| 35) L7 AR-1260-5 | 8.397 | 7.409 | 112.9E6 | 90638750 | 477.033 | 522.040 |
| ----- | | | | | | |

(f)=RT Delta > 1/2 Window (#)=Amounts differ by > 25% (m)=manual int.

Data Path : Z:\pestpcbsrv\HPCHEM1\ECD_P\Data\PP060525\
 Data File : PP072647.D
 Signal(s) : Signal #1: ECD1A.ch Signal #2: ECD2B.ch
 Acq On : 05 Jun 2025 08:57
 Operator : YP\AJ
 Sample : AR1660CCC500
 Misc :
 ALS Vial : 3 Sample Multiplier: 1

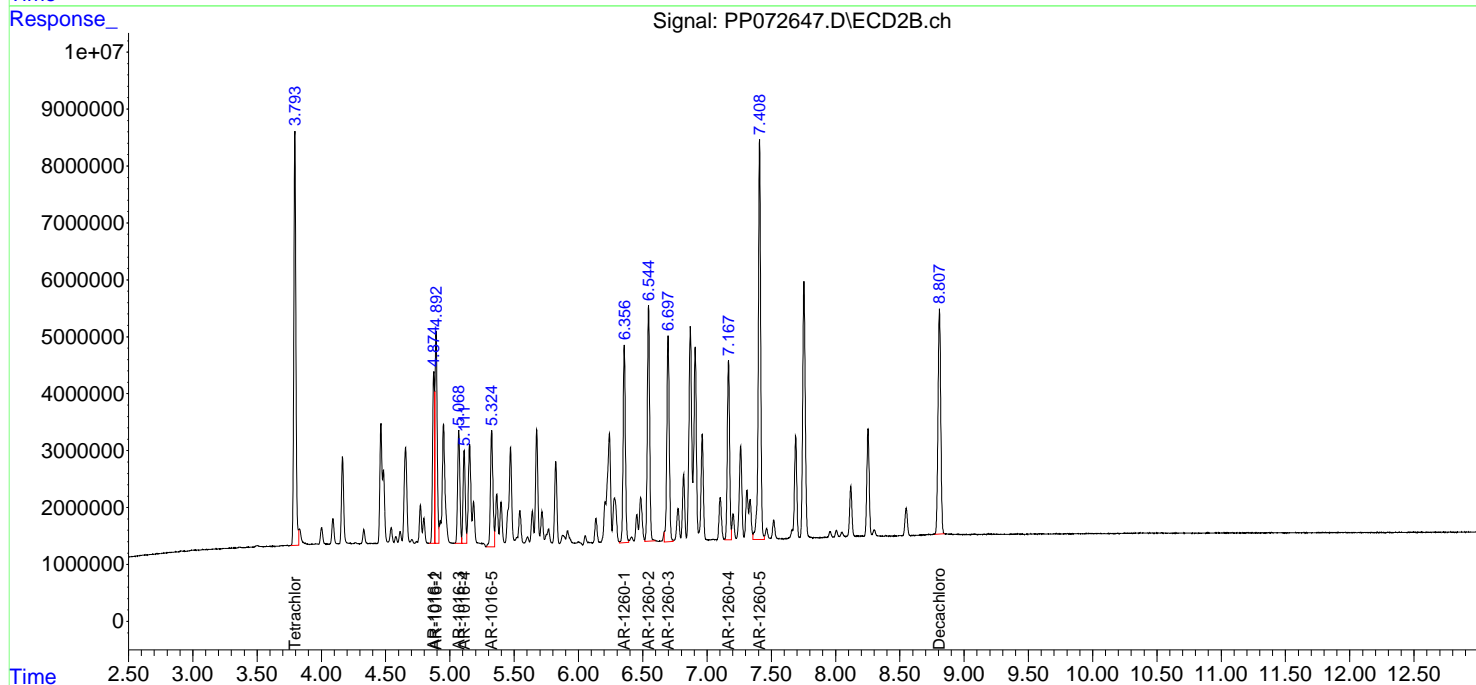
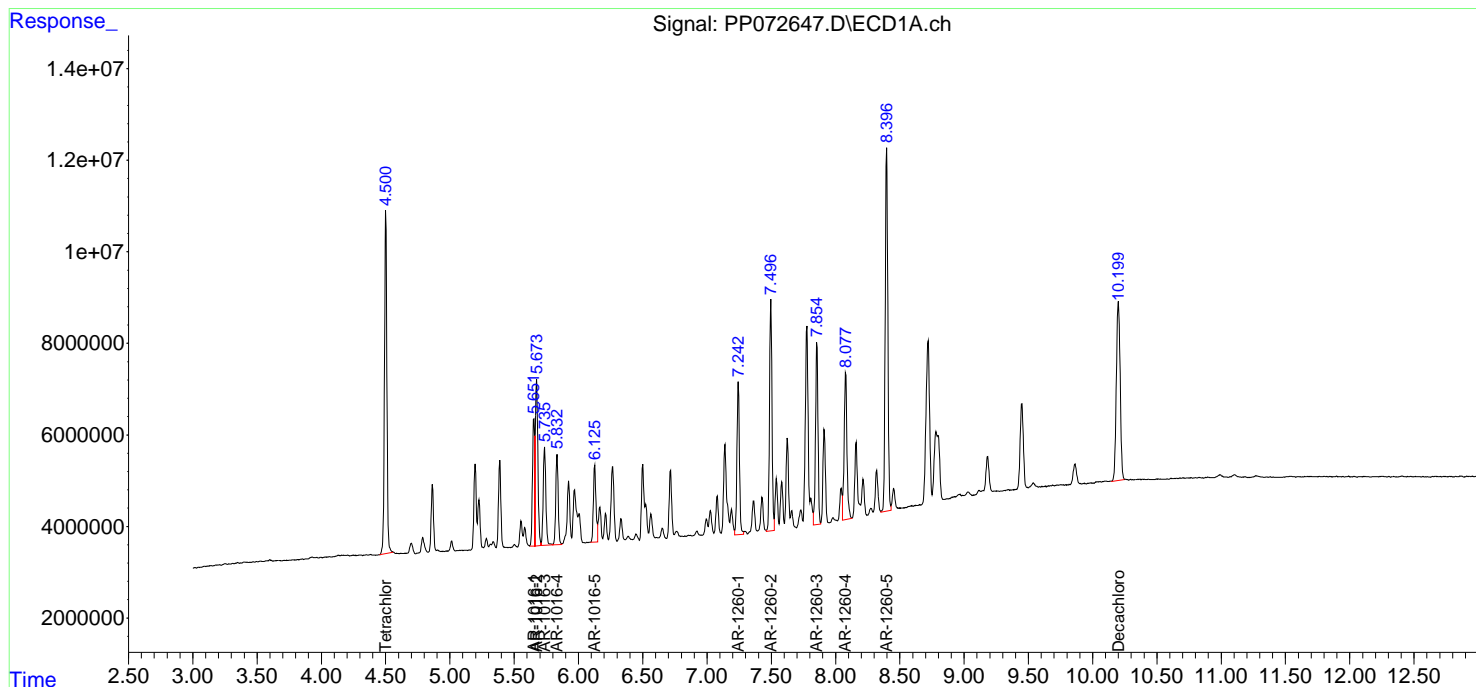
Instrument :
 ECD_P
 ClientSampleId :
 AR1660CCC500

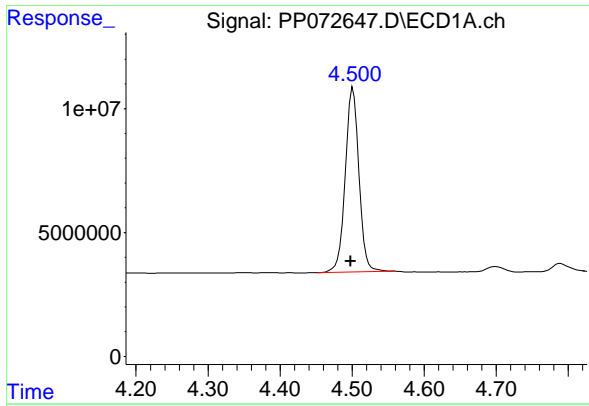
Manual Integrations
 APPROVED

Reviewed By :Yogesh Patel 06/05/2025
 Supervised By :mohammad ahmed 06/09/2025

Integration File signal 1: autoint1.e
 Integration File signal 2: autoint2.e
 Quant Time: Jun 05 12:31:57 2025
 Quant Method: Z:\pestpcbsrv\HPCHEM1\ECD_P\methods\PP051925.M
 Quant Title : GC EXTRACTABLES
 QLast Update : Sat May 24 03:32:20 2025
 Response via : Initial Calibration
 Integrator: ChemStation

Volume Inj. : 2 µl
 Signal #1 Phase : ZB-MR1 Signal #2 Phase: ZB-MR2
 Signal #1 Info : 30Mx0.32mmx 0.50µ Signal #2 Info : 30M x 0.32mm x 0.25µm





#1 Tetrachloro-m-xylene

R.T.: 4.501 min
 Delta R.T.: 0.003 min
 Response: 98258619
 Conc: 48.87 ng/ml

Instrument :

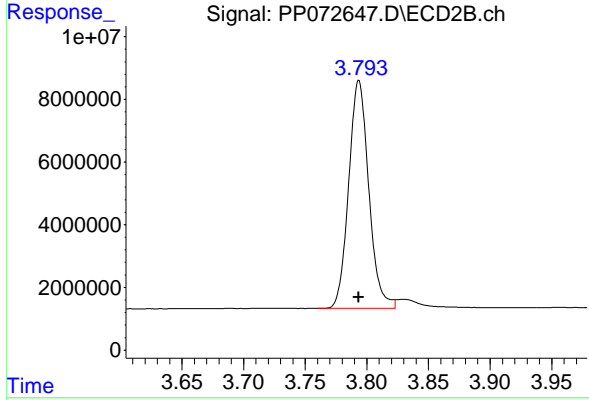
ECD_P

ClientSampleId :

AR1660CCC500

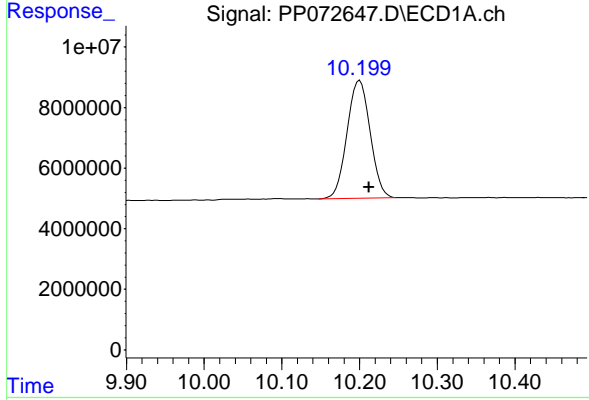
Manual Integrations
 APPROVED

Reviewed By :Yogesh Patel 06/05/2025
 Supervised By :mohammad ahmed 06/09/2025



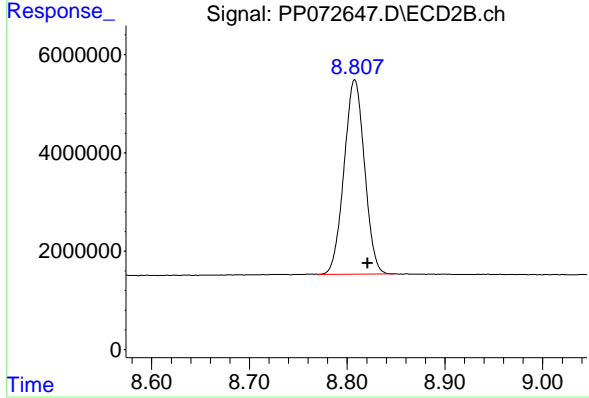
#1 Tetrachloro-m-xylene

R.T.: 3.794 min
 Delta R.T.: 0.000 min
 Response: 82407037
 Conc: 51.56 ng/ml



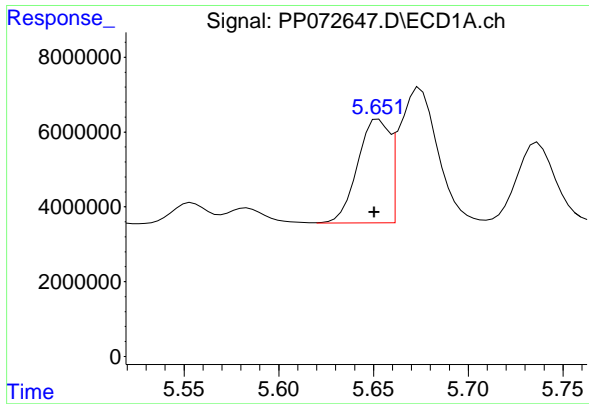
#2 Decachlorobiphenyl

R.T.: 10.199 min
 Delta R.T.: -0.013 min
 Response: 80465028
 Conc: 49.39 ng/ml m



#2 Decachlorobiphenyl

R.T.: 8.807 min
 Delta R.T.: -0.014 min
 Response: 57575647
 Conc: 54.39 ng/ml m



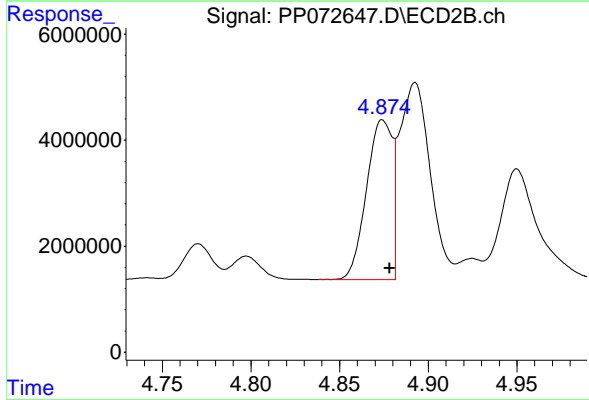
#3 AR-1016-1

R.T.: 5.653 min
 Delta R.T.: 0.002 min
 Response: 32156269
 Conc: 428.27 ng/ml

Instrument :
 ECD_P
 ClientSampleId :
 AR1660CCC500

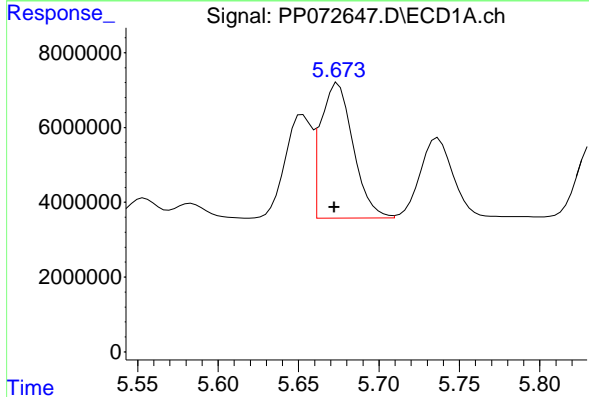
Manual Integrations
 APPROVED

Reviewed By :Yogesh Patel 06/05/2025
 Supervised By :mohammad ahmed 06/09/2025



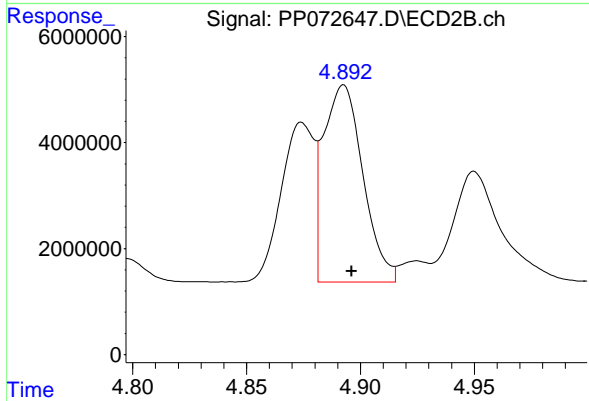
#3 AR-1016-1

R.T.: 4.874 min
 Delta R.T.: -0.004 min
 Response: 30366096
 Conc: 494.32 ng/ml



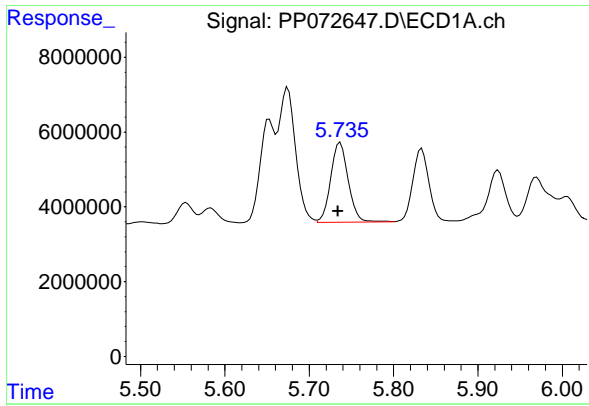
#4 AR-1016-2

R.T.: 5.675 min
 Delta R.T.: 0.002 min
 Response: 50797983
 Conc: 474.78 ng/ml



#4 AR-1016-2

R.T.: 4.893 min
 Delta R.T.: -0.004 min
 Response: 44692788
 Conc: 509.09 ng/ml



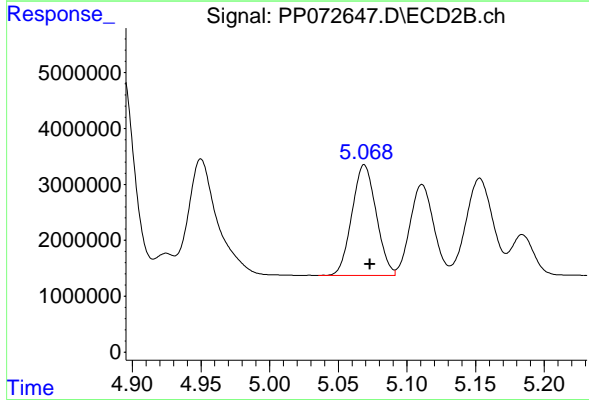
#5 AR-1016-3

R.T.: 5.737 min
 Delta R.T.: 0.003 min
 Response: 30895443
 Conc: 471.22 ng/ml

Instrument : ECD_P
 Client Sample Id : AR1660CCC500

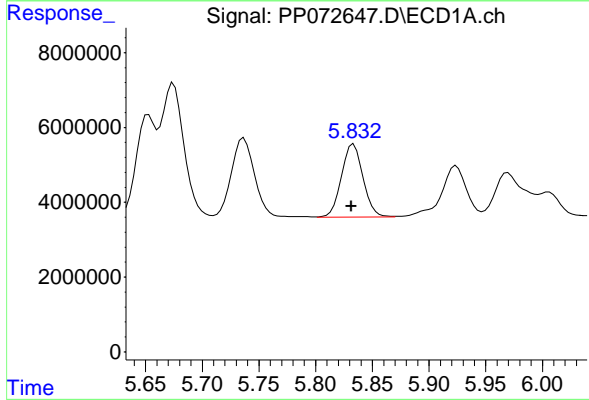
Manual Integrations
 APPROVED

Reviewed By :Yogesh Patel 06/05/2025
 Supervised By :mohammad ahmed 06/09/2025



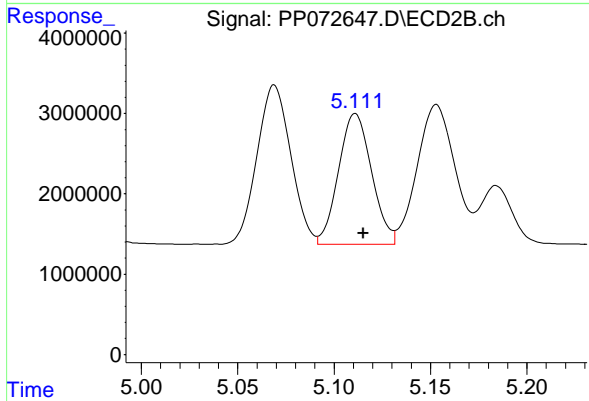
#5 AR-1016-3

R.T.: 5.069 min
 Delta R.T.: -0.004 min
 Response: 24341653
 Conc: 510.79 ng/ml



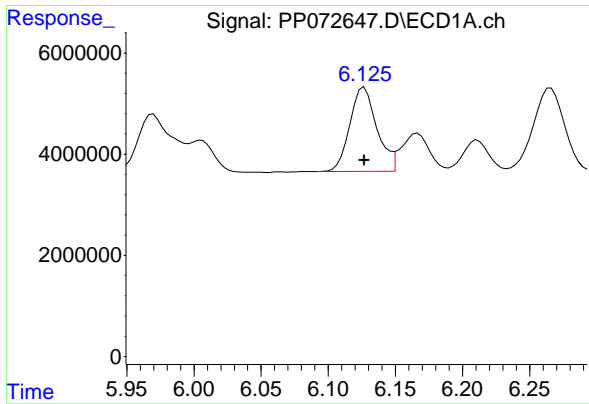
#6 AR-1016-4

R.T.: 5.833 min
 Delta R.T.: 0.002 min
 Response: 25882047
 Conc: 485.87 ng/ml



#6 AR-1016-4

R.T.: 5.111 min
 Delta R.T.: -0.004 min
 Response: 19482956
 Conc: 512.10 ng/ml



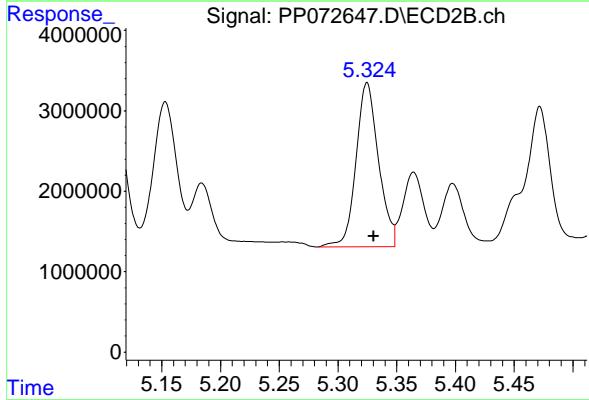
#7 AR-1016-5

R.T.: 6.127 min
 Delta R.T.: 0.000 min
 Response: 23473243
 Conc: 479.94 ng/ml

Instrument :
 ECD_P
 ClientSampleId :
 AR1660CCC500

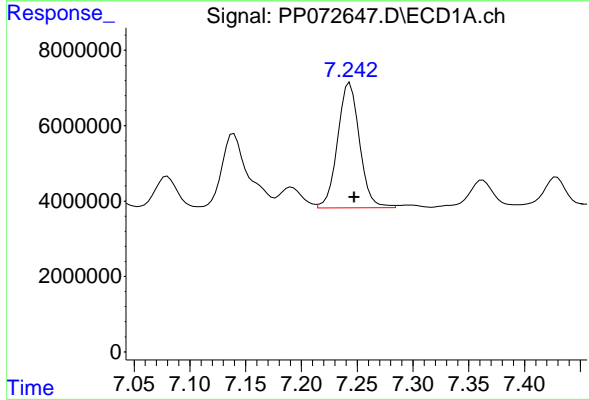
Manual Integrations
 APPROVED

Reviewed By :Yogesh Patel 06/05/2025
 Supervised By :mohammad ahmed 06/09/2025



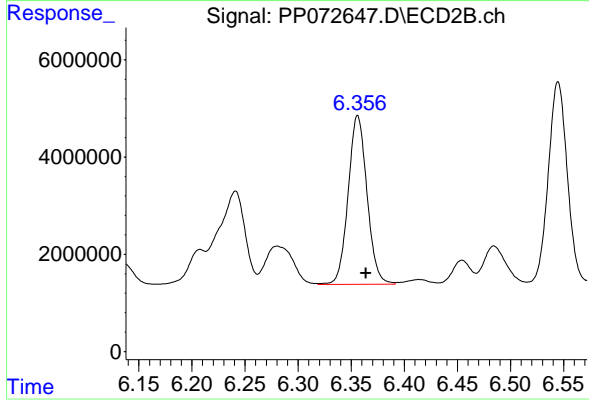
#7 AR-1016-5

R.T.: 5.325 min
 Delta R.T.: -0.006 min
 Response: 27250586
 Conc: 546.93 ng/ml



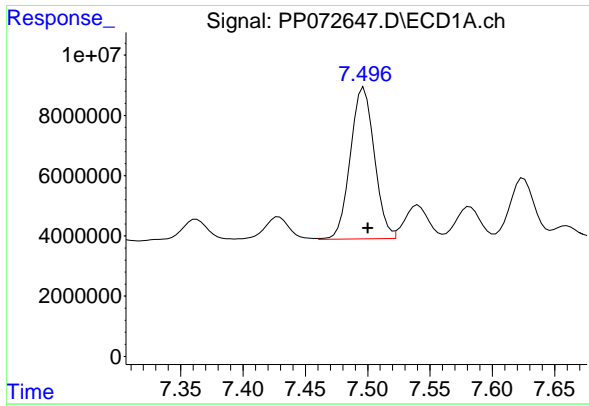
#31 AR-1260-1

R.T.: 7.243 min
 Delta R.T.: -0.004 min
 Response: 45254768
 Conc: 483.52 ng/ml



#31 AR-1260-1

R.T.: 6.356 min
 Delta R.T.: -0.008 min
 Response: 42909216
 Conc: 538.02 ng/ml



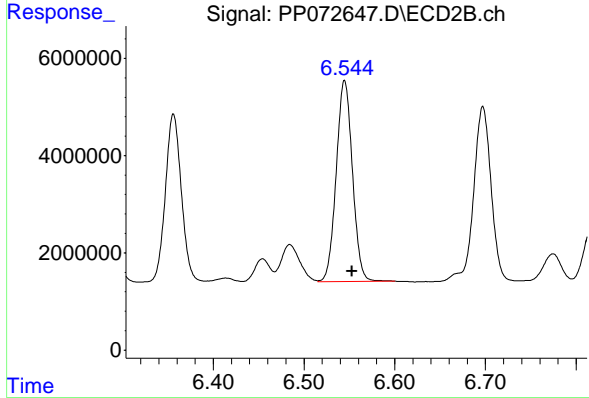
#32 AR-1260-2

R.T.: 7.497 min
 Delta R.T.: -0.003 min
 Response: 67218522
 Conc: 468.46 ng/ml

Instrument : ECD_P
 ClientSampleId : AR1660CCC500

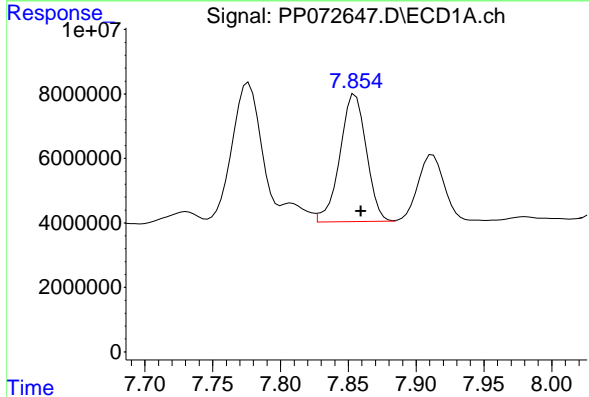
Manual Integrations
 APPROVED

Reviewed By :Yogesh Patel 06/05/2025
 Supervised By :mohammad ahmed 06/09/2025



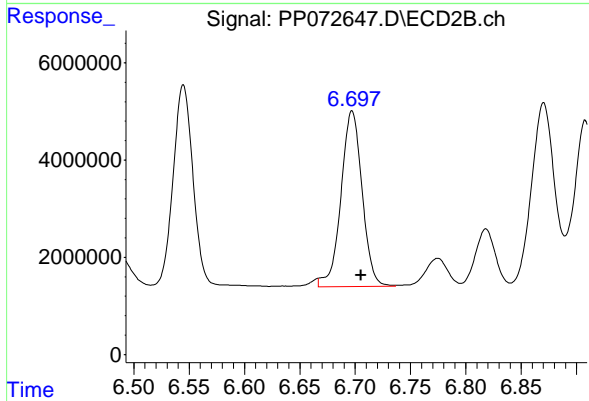
#32 AR-1260-2

R.T.: 6.545 min
 Delta R.T.: -0.008 min
 Response: 51422275
 Conc: 507.01 ng/ml



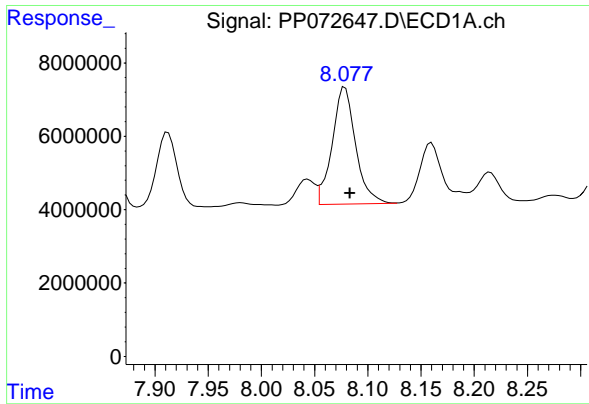
#33 AR-1260-3

R.T.: 7.855 min
 Delta R.T.: -0.004 min
 Response: 53487984
 Conc: 469.73 ng/ml



#33 AR-1260-3

R.T.: 6.697 min
 Delta R.T.: -0.009 min
 Response: 47993261
 Conc: 552.27 ng/ml m



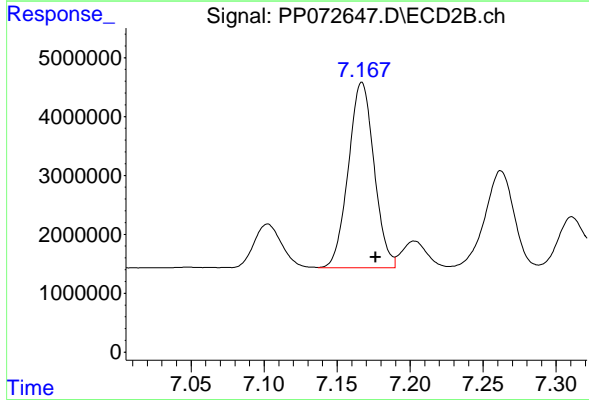
#34 AR-1260-4

R.T.: 8.079 min
 Delta R.T.: -0.005 min
 Response: 48984616
 Conc: 456.51 ng/ml

Instrument : ECD_P
 Client Sample Id : AR1660CCC500

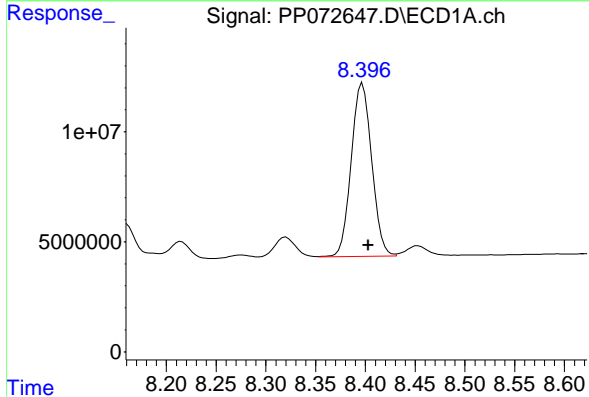
Manual Integrations
 APPROVED

Reviewed By :Yogesh Patel 06/05/2025
 Supervised By :mohammad ahmed 06/09/2025



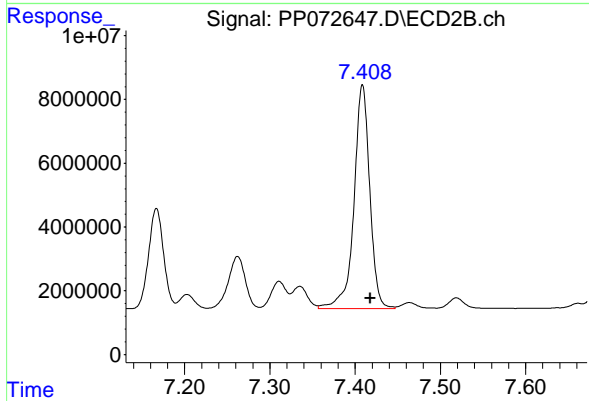
#34 AR-1260-4

R.T.: 7.167 min
 Delta R.T.: -0.009 min
 Response: 38634230
 Conc: 535.91 ng/ml



#35 AR-1260-5

R.T.: 8.397 min
 Delta R.T.: -0.006 min
 Response: 112895716
 Conc: 477.03 ng/ml



#35 AR-1260-5

R.T.: 7.409 min
 Delta R.T.: -0.009 min
 Response: 90638750
 Conc: 522.04 ng/ml