

Data Path : Z:\pestpcbsrv\HPCHEM1\ECD\_P\Data\PP060525\  
 Data File : PP072655.D  
 Signal(s) : Signal #1: ECD1A.ch Signal #2: ECD2B.ch  
 Acq On : 05 Jun 2025 11:07  
 Operator : YP\AJ  
 Sample : Q2175-09RE 10X  
 Misc :  
 ALS Vial : 10 Sample Multiplier: 1

**Instrument :**  
 ECD\_P  
**ClientSampleId :**  
 52725

**Manual Integrations**  
**APPROVED**

Reviewed By :Yogesh Patel 06/06/2025  
 Supervised By :mohammad ahmed 06/09/2025

Integration File signal 1: autoint1.e  
 Integration File signal 2: autoint2.e  
 Quant Time: Jun 05 12:37:24 2025  
 Quant Method : Z:\pestpcbsrv\HPCHEM1\ECD\_P\methods\PP051925.M  
 Quant Title : GC EXTRACTABLES  
 QLast Update : Sat May 24 03:32:20 2025  
 Response via : Initial Calibration  
 Integrator: ChemStation

Volume Inj. : 2 µl  
 Signal #1 Phase : ZB-MR1 Signal #2 Phase: ZB-MR2  
 Signal #1 Info : 30Mx0.32mmx 0.50µ Signal #2 Info : 30M x 0.32mm x 0.25µm

Compound	RT#1	RT#2	Resp#1	Resp#2	ng/ml	ng/ml
-----						
System Monitoring Compounds						
1) SA Tetrachlo...	4.502	3.795	377307	1306838	0.188m	0.818 #
2) SA Decachlor...	10.205	8.810	1130135	547848	0.694m	0.518 #
Target Compounds						
16) L4 AR-1242-1	5.652	4.876	10557213	11629450	168.653	223.178 #
17) L4 AR-1242-2	5.675	4.894	12791490	11068098	147.402	150.594
18) L4 AR-1242-3	5.737	5.072	7498193	6827570	136.168	174.504 #
19) L4 AR-1242-4	5.833	5.151	6522782	2993554	147.078	79.652m#
20) L4 AR-1242-5	6.582	5.678	155445	666367	3.049m	13.809 #
-----						

(f)=RT Delta > 1/2 Window (#)=Amounts differ by > 25% (m)=manual int.

Data Path : Z:\pestpcbsrv\HPCHEM1\ECD\_P\Data\PP060525\  
 Data File : PP072655.D  
 Signal(s) : Signal #1: ECD1A.ch Signal #2: ECD2B.ch  
 Acq On : 05 Jun 2025 11:07  
 Operator : YP\AJ  
 Sample : Q2175-09RE 10X  
 Misc :  
 ALS Vial : 10 Sample Multiplier: 1

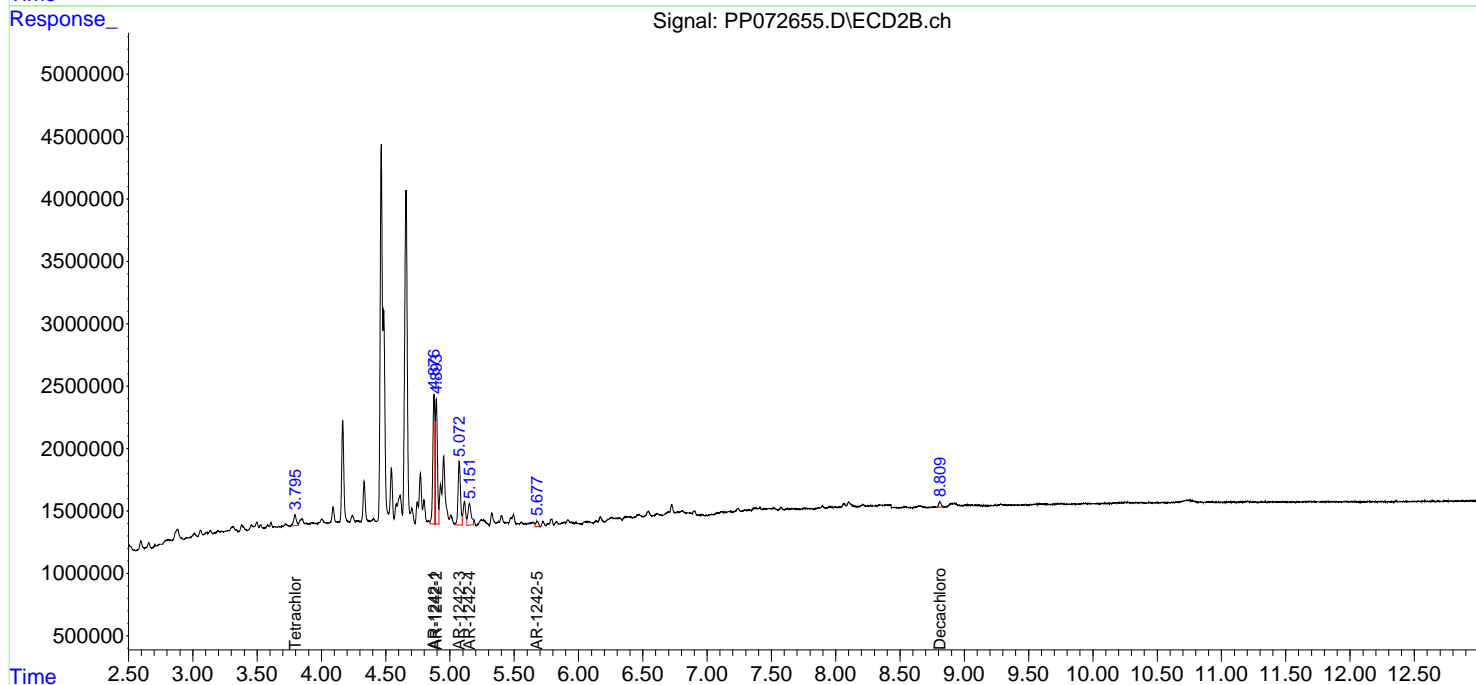
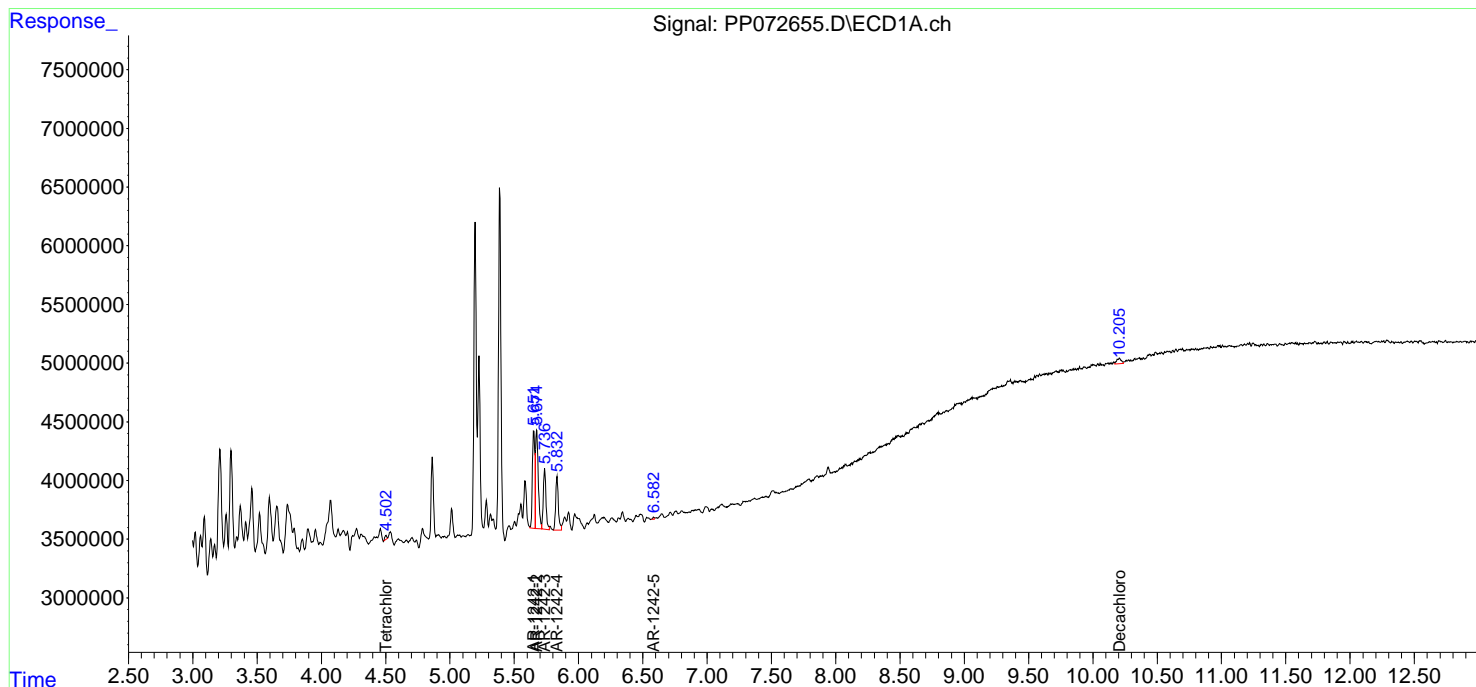
Instrument :  
 ECD\_P  
 ClientSampleId :  
 52725

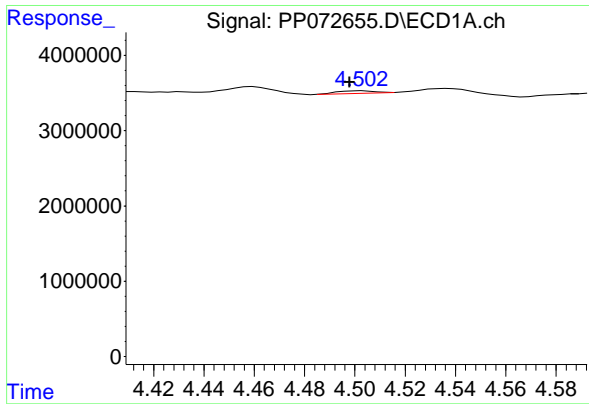
Manual Integrations  
 APPROVED

Reviewed By :Yogesh Patel 06/06/2025  
 Supervised By :mohammad ahmed 06/09/2025

Integration File signal 1: autoint1.e  
 Integration File signal 2: autoint2.e  
 Quant Time: Jun 05 12:37:24 2025  
 Quant Method : Z:\pestpcbsrv\HPCHEM1\ECD\_P\methods\PP051925.M  
 Quant Title : GC EXTRACTABLES  
 QLast Update : Sat May 24 03:32:20 2025  
 Response via : Initial Calibration  
 Integrator: ChemStation

Volume Inj. : 2 µl  
 Signal #1 Phase : ZB-MR1 Signal #2 Phase: ZB-MR2  
 Signal #1 Info : 30Mx0.32mmx 0.50µ Signal #2 Info : 30M x 0.32mm x 0.25µm





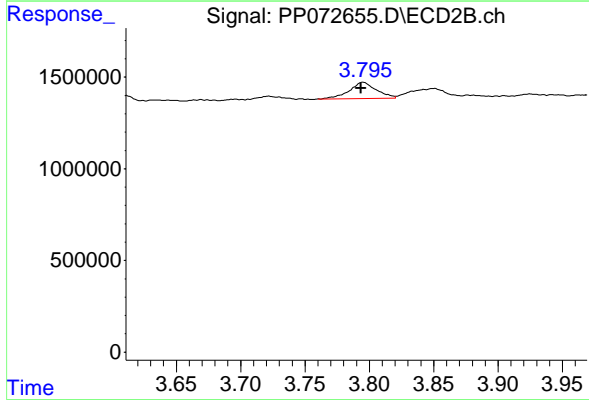
#1 Tetrachloro-m-xylene

R.T.: 4.502 min  
 Delta R.T.: 0.004 min  
 Response: 377307  
 Conc: 0.19 ng/ml

Instrument : ECD\_P  
 Client Sample Id : 52725

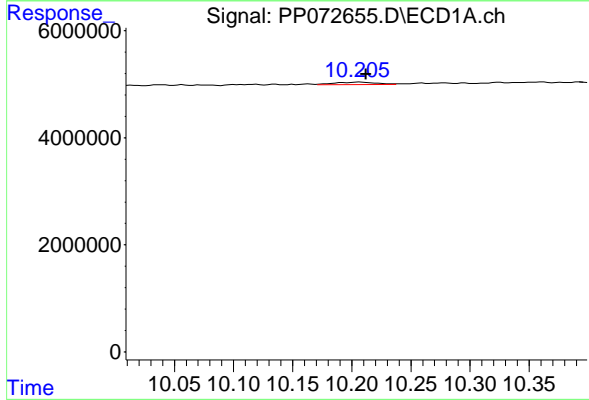
Manual Integrations  
 APPROVED

Reviewed By :Yogesh Patel 06/06/2025  
 Supervised By :mohammad ahmed 06/09/2025



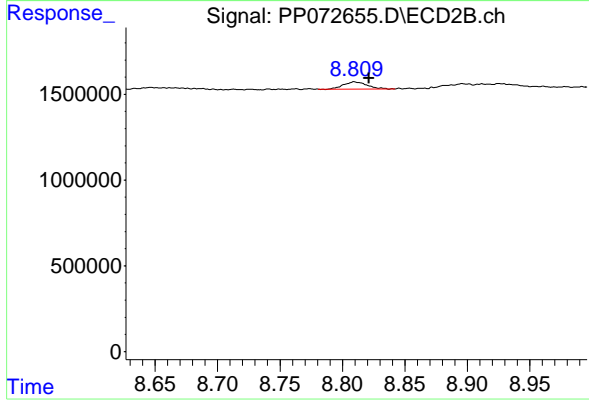
#1 Tetrachloro-m-xylene

R.T.: 3.795 min  
 Delta R.T.: 0.002 min  
 Response: 1306838  
 Conc: 0.82 ng/ml



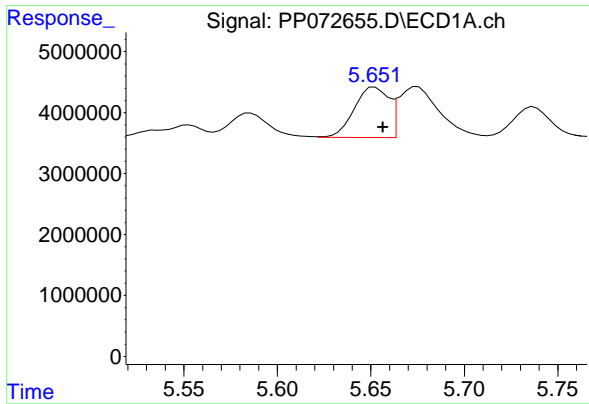
#2 Decachlorobiphenyl

R.T.: 10.205 min  
 Delta R.T.: -0.007 min  
 Response: 1130135  
 Conc: 0.69 ng/ml m



#2 Decachlorobiphenyl

R.T.: 8.810 min  
 Delta R.T.: -0.012 min  
 Response: 547848  
 Conc: 0.52 ng/ml



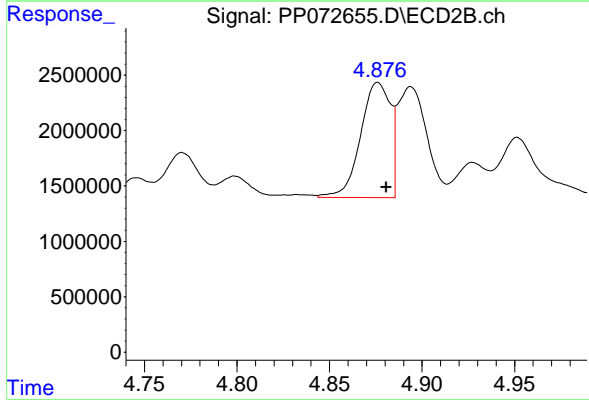
#16 AR-1242-1

R.T.: 5.652 min  
 Delta R.T.: -0.004 min  
 Response: 10557213  
 Conc: 168.65 ng/ml

Instrument :  
 ECD\_P  
 ClientSampleId :  
 52725

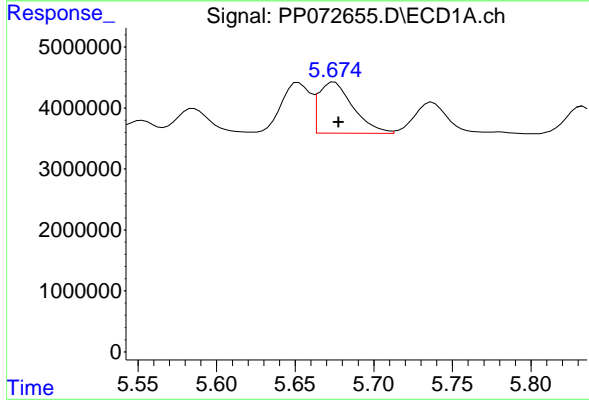
Manual Integrations  
 APPROVED

Reviewed By :Yogesh Patel 06/06/2025  
 Supervised By :mohammad ahmed 06/09/2025



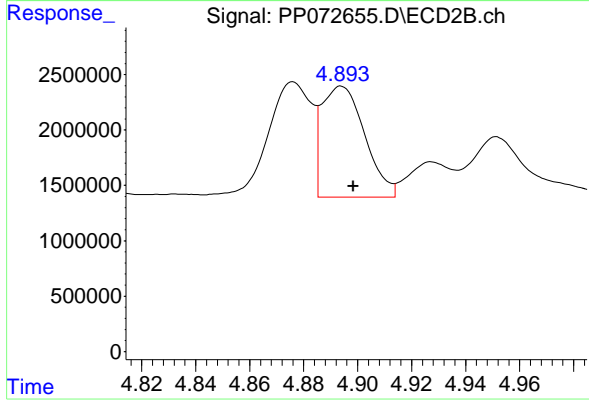
#16 AR-1242-1

R.T.: 4.876 min  
 Delta R.T.: -0.005 min  
 Response: 11629450  
 Conc: 223.18 ng/ml



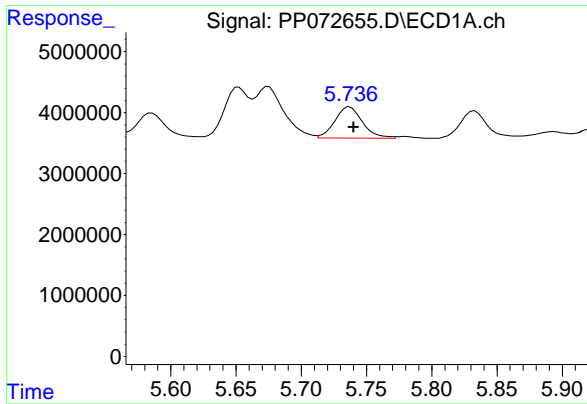
#17 AR-1242-2

R.T.: 5.675 min  
 Delta R.T.: -0.003 min  
 Response: 12791490  
 Conc: 147.40 ng/ml



#17 AR-1242-2

R.T.: 4.894 min  
 Delta R.T.: -0.004 min  
 Response: 11068098  
 Conc: 150.59 ng/ml



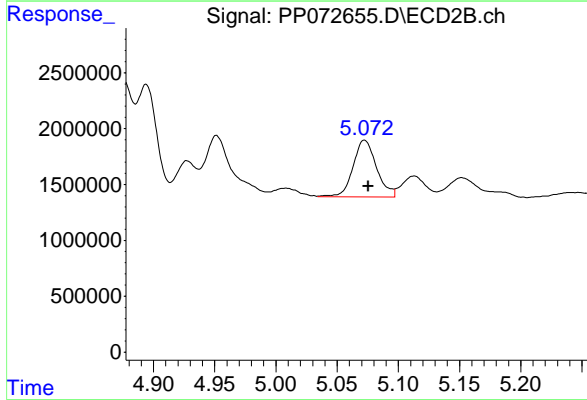
#18 AR-1242-3

R.T.: 5.737 min  
 Delta R.T.: -0.003 min  
 Response: 7498193  
 Conc: 136.17 ng/ml

Instrument :  
 ECD\_P  
 ClientSampleId :  
 52725

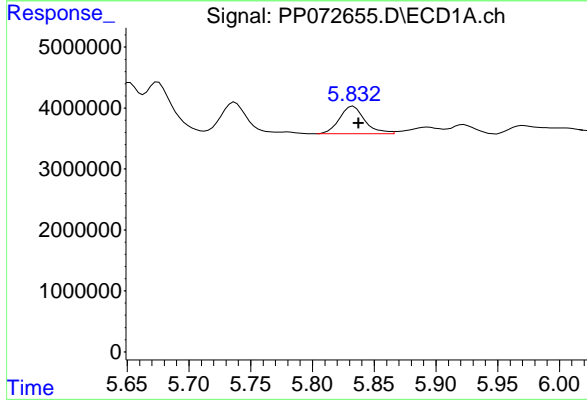
Manual Integrations  
 APPROVED

Reviewed By :Yogesh Patel 06/06/2025  
 Supervised By :mohammad ahmed 06/09/2025



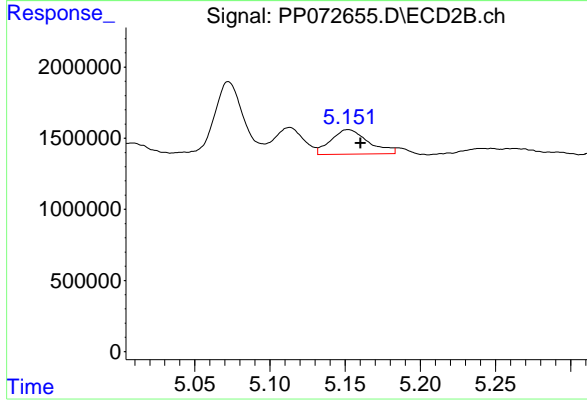
#18 AR-1242-3

R.T.: 5.072 min  
 Delta R.T.: -0.003 min  
 Response: 6827570  
 Conc: 174.50 ng/ml



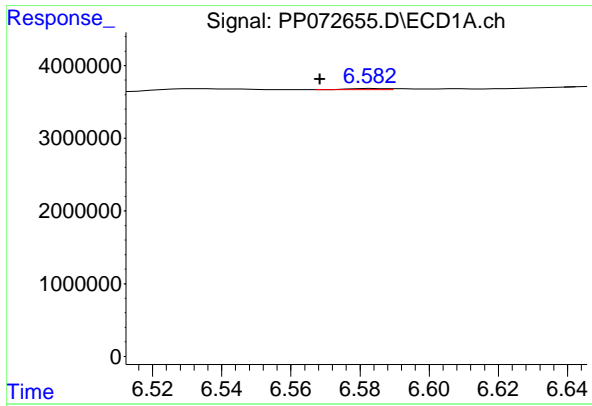
#19 AR-1242-4

R.T.: 5.833 min  
 Delta R.T.: -0.005 min  
 Response: 6522782  
 Conc: 147.08 ng/ml



#19 AR-1242-4

R.T.: 5.151 min  
 Delta R.T.: -0.009 min  
 Response: 2993554  
 Conc: 79.65 ng/ml m



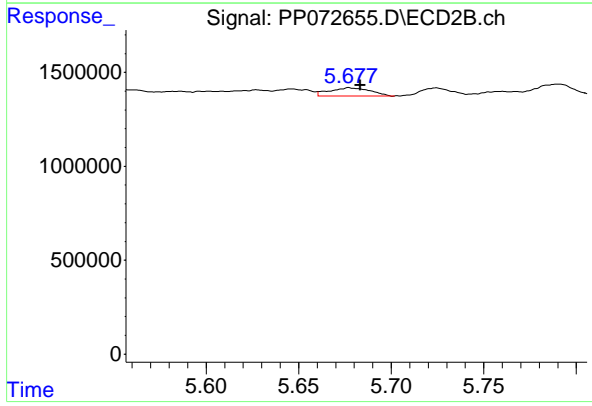
#20 AR-1242-5

R.T.: 6.582 min  
 Delta R.T.: 0.014 min  
 Response: 155445  
 Conc: 3.05 ng/ml

Instrument : ECD\_P  
 ClientSampleId : 52725

Manual Integrations  
 APPROVED

Reviewed By :Yogesh Patel 06/06/2025  
 Supervised By :mohammad ahmed 06/09/2025



#20 AR-1242-5

R.T.: 5.678 min  
 Delta R.T.: -0.006 min  
 Response: 666367  
 Conc: 13.81 ng/ml