

Data Path : Z:\pestpcbsrv\HPCHEM1\ECD\_P\Data\PP060525\  
 Data File : PP072669.D  
 Signal(s) : Signal #1: ECD1A.ch Signal #2: ECD2B.ch  
 Acq On : 05 Jun 2025 16:46  
 Operator : YP\AJ  
 Sample : Q2206-01MSD  
 Misc :  
 ALS Vial : 19 Sample Multiplier: 1

**Instrument :**  
 ECD\_P  
**ClientSampleId :**  
 TP-1MSD

**Manual Integrations**  
**APPROVED**  
 Reviewed By :Yogesh Patel 06/06/2025  
 Supervised By :mohammad ahmed 06/09/2025

Integration File signal 1: autoint1.e  
 Integration File signal 2: autoint2.e  
 Quant Time: Jun 06 02:50:44 2025  
 Quant Method : Z:\pestpcbsrv\HPCHEM1\ECD\_P\methods\PP051925.M  
 Quant Title : GC EXTRACTABLES  
 QLast Update : Sat May 24 03:32:20 2025  
 Response via : Initial Calibration  
 Integrator: ChemStation

Volume Inj. : 2 µl  
 Signal #1 Phase : ZB-MR1 Signal #2 Phase: ZB-MR2  
 Signal #1 Info : 30Mx0.32mmx 0.50µ Signal #2 Info : 30M x 0.32mm x 0.25µm

Compound	RT#1	RT#2	Resp#1	Resp#2	ng/ml	ng/ml
-----						
System Monitoring Compounds						
1) SA Tetrachlo...	4.499	3.797	33557854	30606899	16.689m	19.149
2) SA Decachlor...	10.202	8.812	26226433	19669523	16.098	18.581
Target Compounds						
3) L1 AR-1016-1	5.652	4.878	23308656	22755487	310.436	370.432
4) L1 AR-1016-2	5.673	4.896	35200290	32514052	329.000	370.364
5) L1 AR-1016-3	5.736	5.073	21224234	17845447	323.713	374.476
6) L1 AR-1016-4	5.833	5.115	18080653	14224310	339.415	373.878
7) L1 AR-1016-5	6.125	5.329	15737366	17914570	321.767	359.554
31) L7 AR-1260-1	7.243	6.361	31698319	30957558	338.676	388.164
32) L7 AR-1260-2	7.496	6.549	45990436	35870648	320.514	353.677
33) L7 AR-1260-3	7.854	6.700	31335451	32651241	275.184	375.723m#
34) L7 AR-1260-4	8.077	7.171	31732017	22755966	295.725m	315.656
35) L7 AR-1260-5	8.397	7.413	69362919	53796420	293.088	309.844

(f)=RT Delta > 1/2 Window (#)=Amounts differ by > 25% (m)=manual int.

Data Path : Z:\pestpcbsrv\HPCHEM1\ECD\_P\Data\PP060525\  
 Data File : PP072669.D  
 Signal(s) : Signal #1: ECD1A.ch Signal #2: ECD2B.ch  
 Acq On : 05 Jun 2025 16:46  
 Operator : YP\AJ  
 Sample : Q2206-01MSD  
 Misc :  
 ALS Vial : 19 Sample Multiplier: 1

**Instrument :**

ECD\_P

**ClientSampleId :**

TP-1MSD

**Manual Integrations**

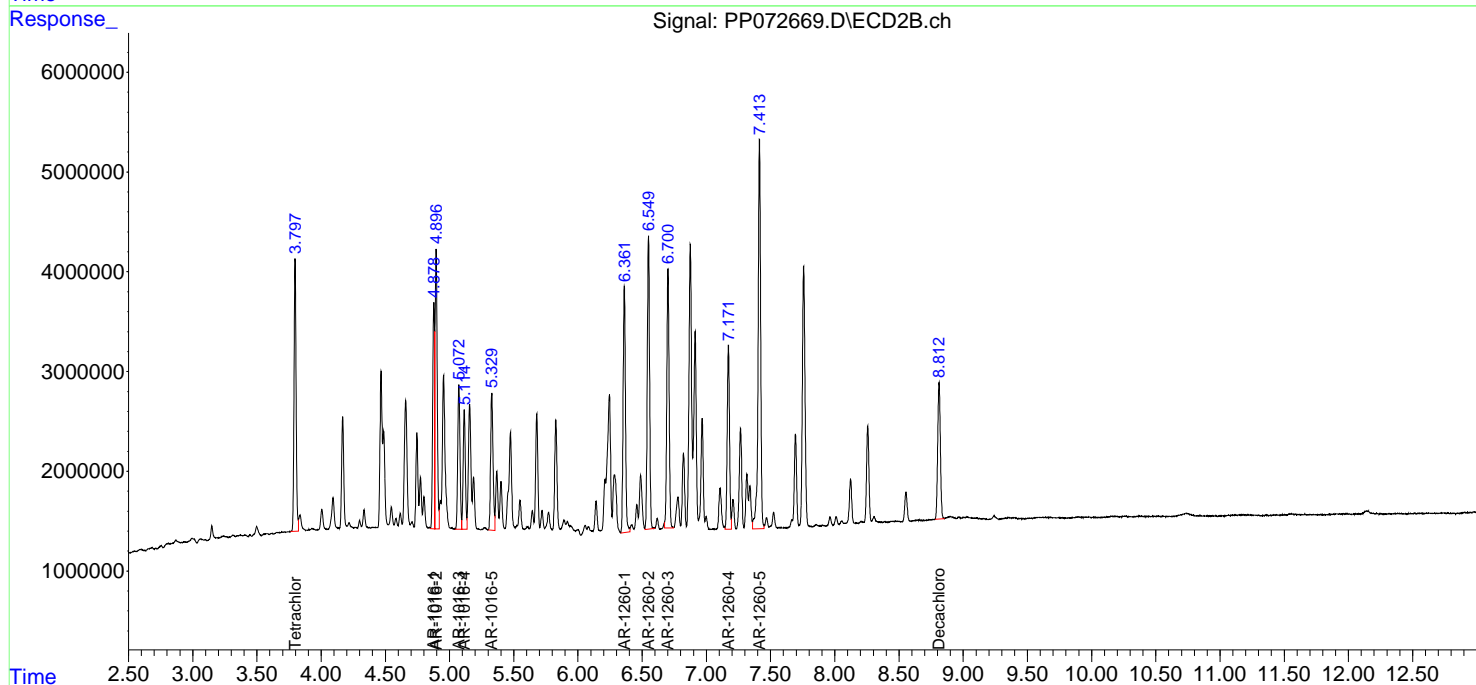
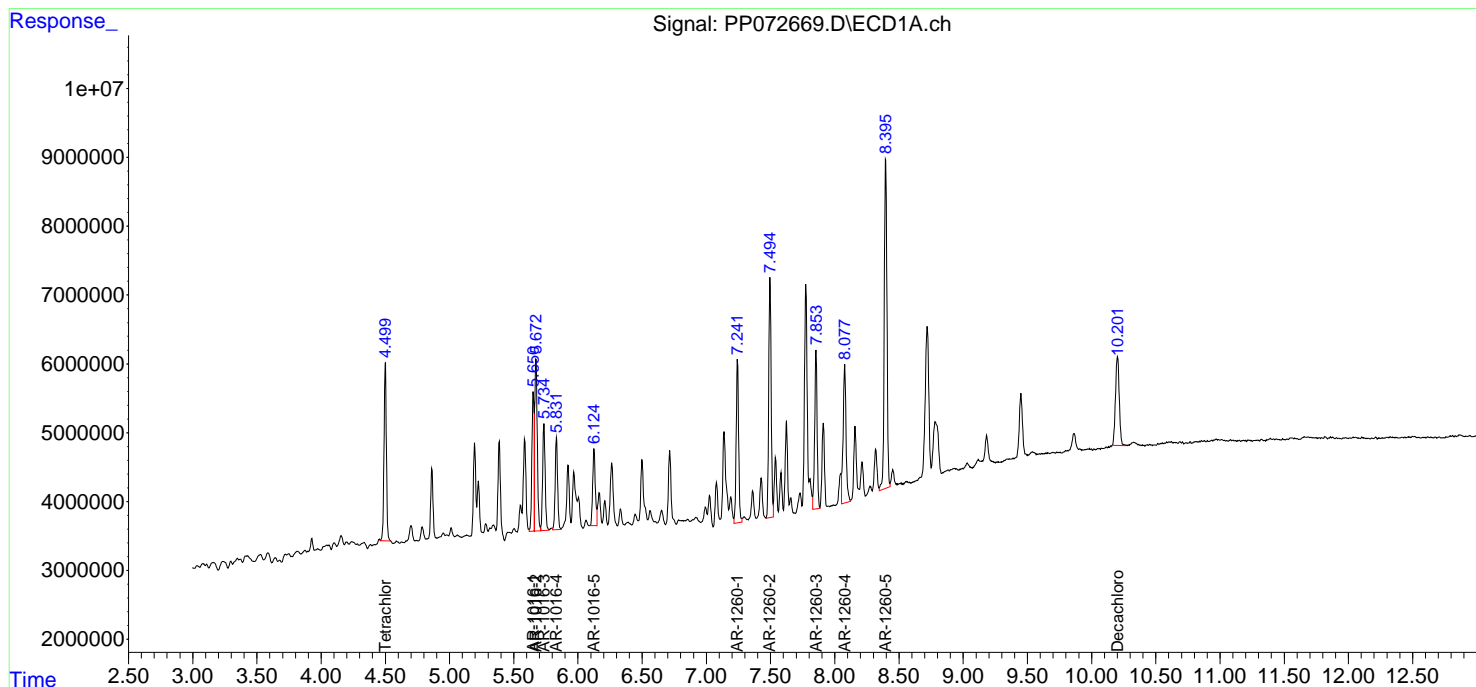
**APPROVED**

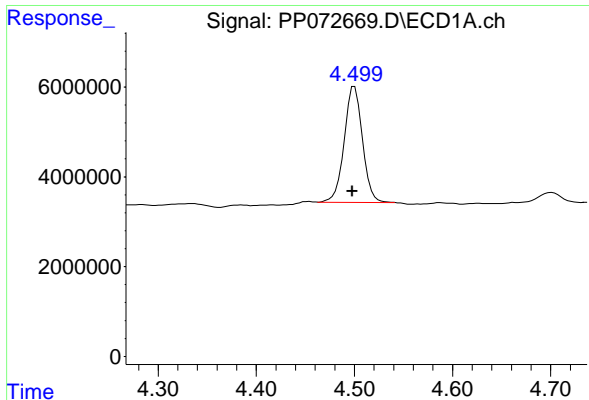
Reviewed By :Yogesh Patel 06/06/2025

Supervised By :mohammad ahmed 06/09/2025

Integration File signal 1: autoint1.e  
 Integration File signal 2: autoint2.e  
 Quant Time: Jun 06 02:50:44 2025  
 Quant Method : Z:\pestpcbsrv\HPCHEM1\ECD\_P\methods\PP051925.M  
 Quant Title : GC EXTRACTABLES  
 QLast Update : Sat May 24 03:32:20 2025  
 Response via : Initial Calibration  
 Integrator: ChemStation

Volume Inj. : 2 µl  
 Signal #1 Phase : ZB-MR1 Signal #2 Phase: ZB-MR2  
 Signal #1 Info : 30Mx0.32mmx 0.50µ Signal #2 Info : 30M x 0.32mm x 0.25µm





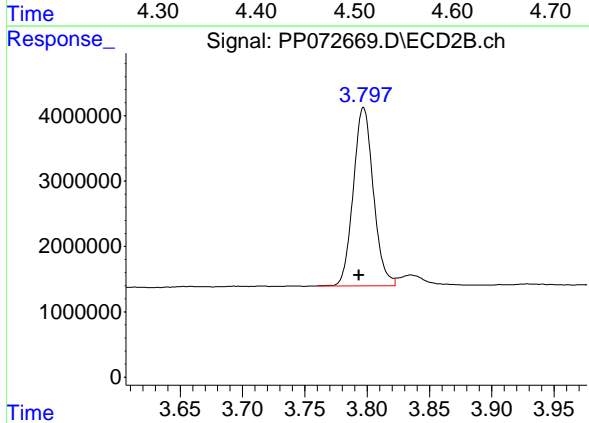
#1 Tetrachloro-m-xylene

R.T.: 4.499 min  
 Delta R.T.: 0.000 min  
 Response: 33557854  
 Conc: 16.69 ng/ml

Instrument : ECD\_P  
 Client Sample Id : TP-1MSD

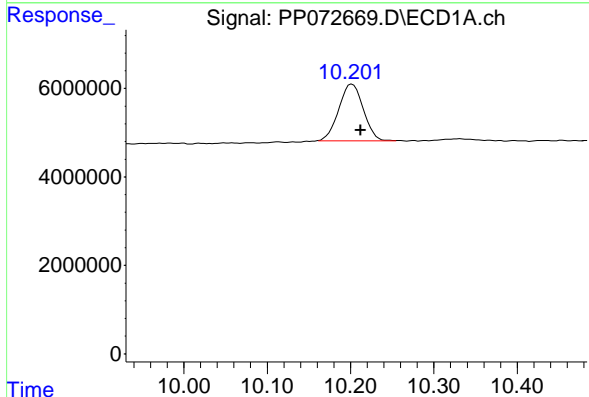
Manual Integrations  
 APPROVED

Reviewed By :Yogesh Patel 06/06/2025  
 Supervised By :mohammad ahmed 06/09/2025



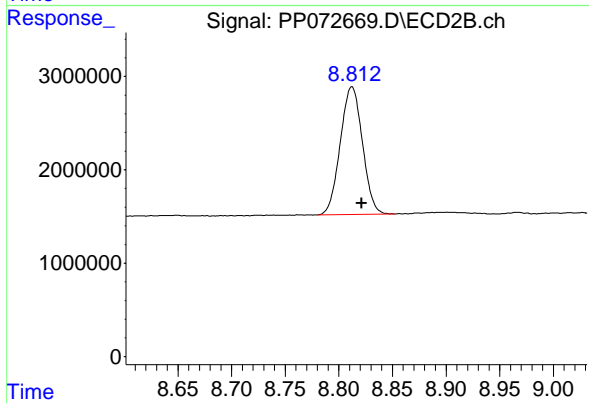
#1 Tetrachloro-m-xylene

R.T.: 3.797 min  
 Delta R.T.: 0.004 min  
 Response: 30606899  
 Conc: 19.15 ng/ml



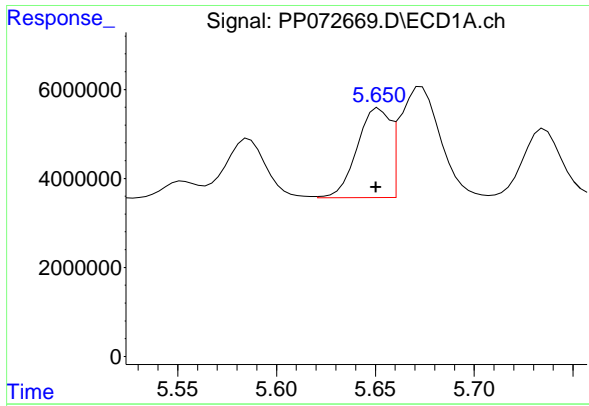
#2 Decachlorobiphenyl

R.T.: 10.202 min  
 Delta R.T.: -0.010 min  
 Response: 26226433  
 Conc: 16.10 ng/ml



#2 Decachlorobiphenyl

R.T.: 8.812 min  
 Delta R.T.: -0.009 min  
 Response: 19669523  
 Conc: 18.58 ng/ml



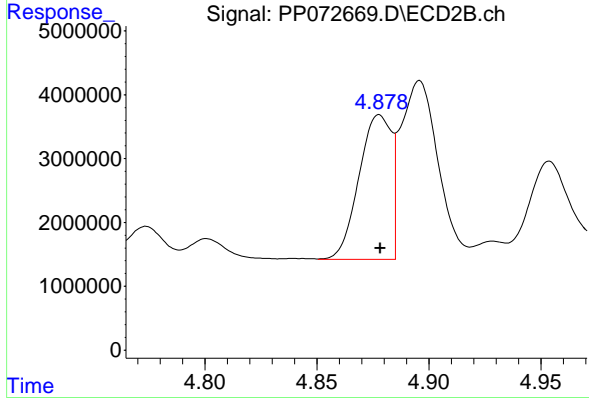
#3 AR-1016-1

R.T.: 5.652 min  
 Delta R.T.: 0.002 min  
 Response: 23308656  
 Conc: 310.44 ng/ml

Instrument : ECD\_P  
 ClientSampleId : TP-1MSD

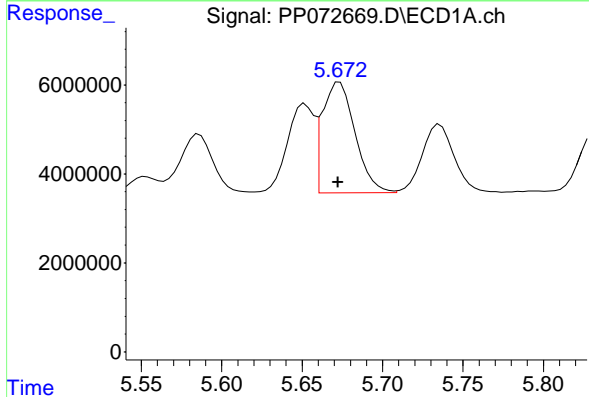
Manual Integrations  
 APPROVED

Reviewed By :Yogesh Patel 06/06/2025  
 Supervised By :mohammad ahmed 06/09/2025



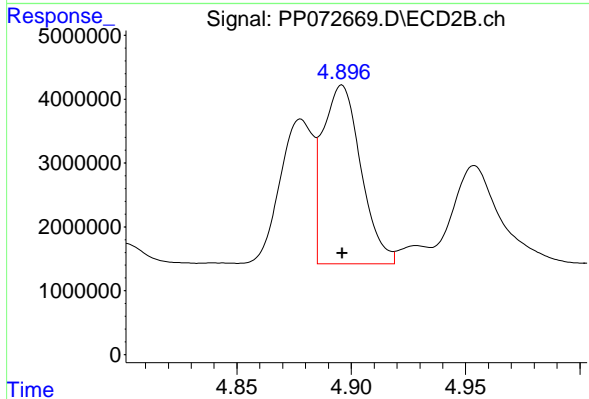
#3 AR-1016-1

R.T.: 4.878 min  
 Delta R.T.: 0.000 min  
 Response: 22755487  
 Conc: 370.43 ng/ml



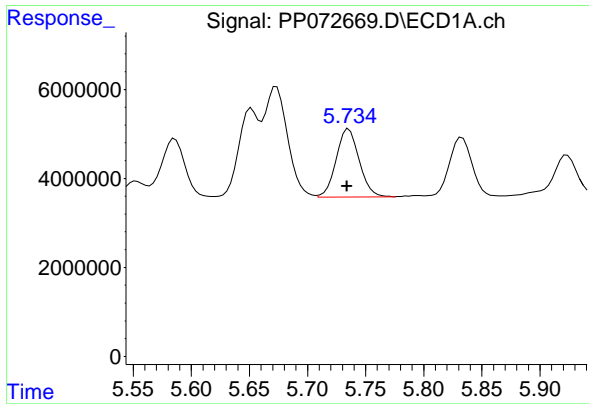
#4 AR-1016-2

R.T.: 5.673 min  
 Delta R.T.: 0.001 min  
 Response: 35200290  
 Conc: 329.00 ng/ml



#4 AR-1016-2

R.T.: 4.896 min  
 Delta R.T.: 0.000 min  
 Response: 32514052  
 Conc: 370.36 ng/ml



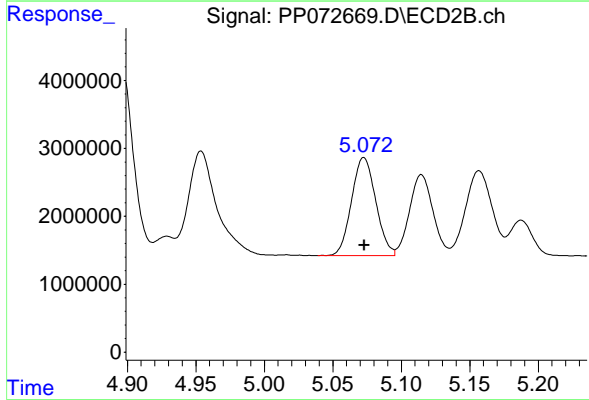
#5 AR-1016-3

R.T.: 5.736 min  
 Delta R.T.: 0.002 min  
 Response: 21224234  
 Conc: 323.71 ng/ml

Instrument : ECD\_P  
 Client Sample Id : TP-1MSD

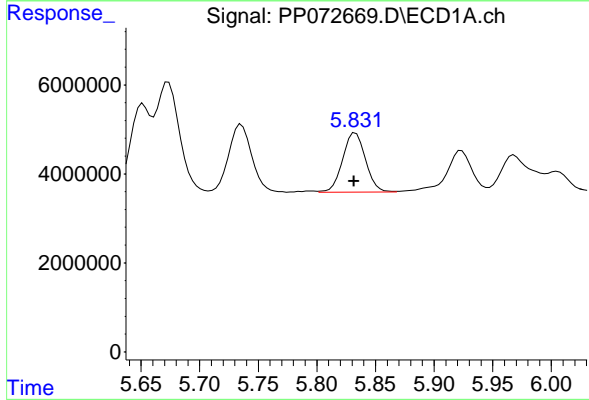
Manual Integrations  
 APPROVED

Reviewed By :Yogesh Patel 06/06/2025  
 Supervised By :mohammad ahmed 06/09/2025



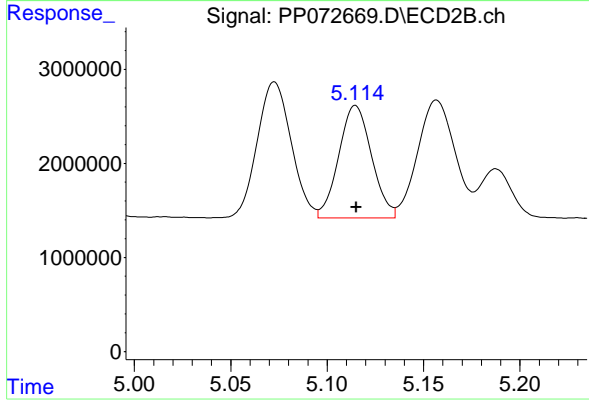
#5 AR-1016-3

R.T.: 5.073 min  
 Delta R.T.: 0.000 min  
 Response: 17845447  
 Conc: 374.48 ng/ml



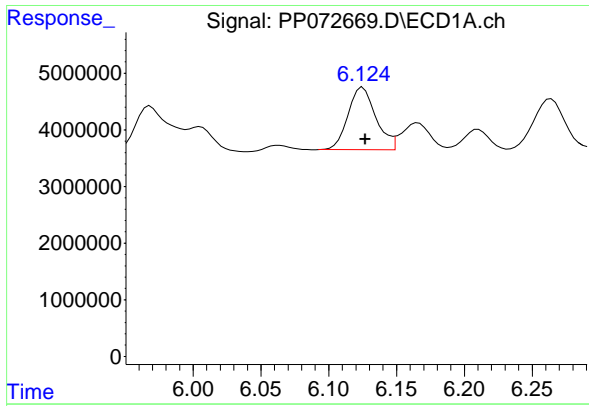
#6 AR-1016-4

R.T.: 5.833 min  
 Delta R.T.: 0.001 min  
 Response: 18080653  
 Conc: 339.42 ng/ml



#6 AR-1016-4

R.T.: 5.115 min  
 Delta R.T.: 0.000 min  
 Response: 14224310  
 Conc: 373.88 ng/ml



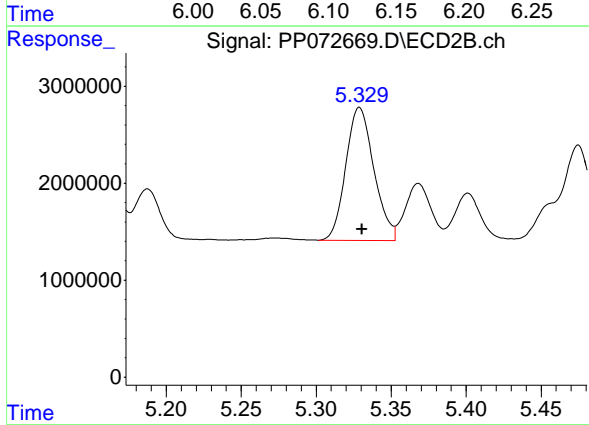
#7 AR-1016-5

R.T.: 6.125 min  
 Delta R.T.: -0.002 min  
 Response: 15737366  
 Conc: 321.77 ng/ml

Instrument :  
 ECD\_P  
 Client SampleId :  
 TP-1MSD

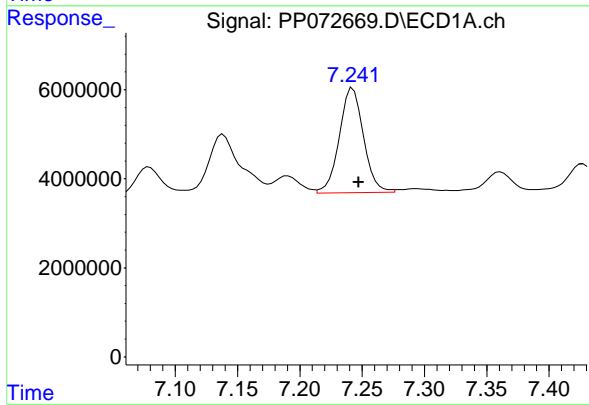
Manual Integrations  
 APPROVED

Reviewed By :Yogesh Patel 06/06/2025  
 Supervised By :mohammad ahmed 06/09/2025



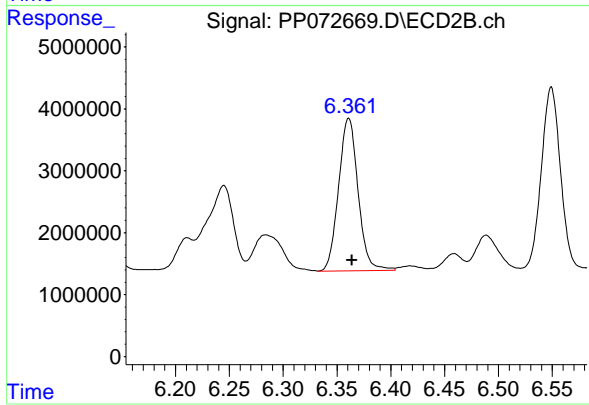
#7 AR-1016-5

R.T.: 5.329 min  
 Delta R.T.: -0.002 min  
 Response: 17914570  
 Conc: 359.55 ng/ml



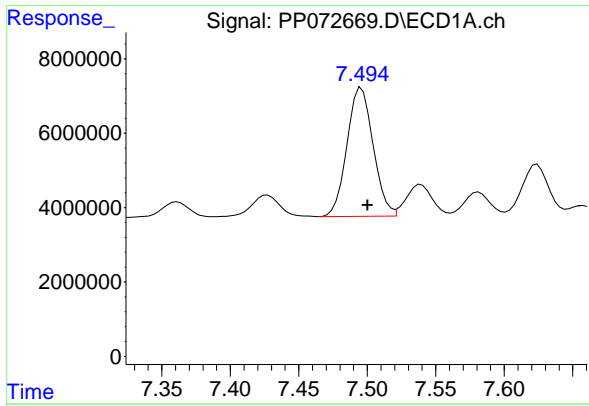
#31 AR-1260-1

R.T.: 7.243 min  
 Delta R.T.: -0.005 min  
 Response: 31698319  
 Conc: 338.68 ng/ml



#31 AR-1260-1

R.T.: 6.361 min  
 Delta R.T.: -0.003 min  
 Response: 30957558  
 Conc: 388.16 ng/ml



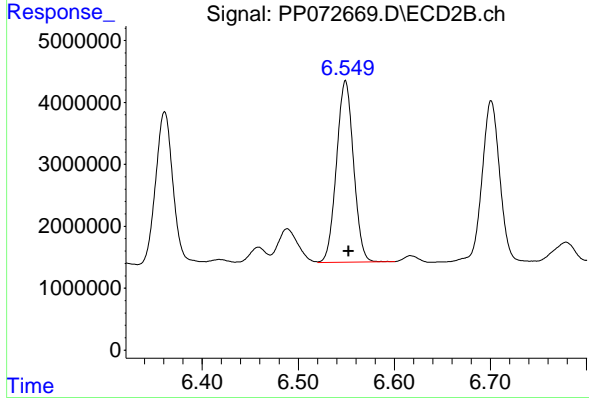
#32 AR-1260-2

R.T.: 7.496 min  
 Delta R.T.: -0.005 min  
 Response: 45990436  
 Conc: 320.51 ng/ml

Instrument : ECD\_P  
 ClientSampleId : TP-1MSD

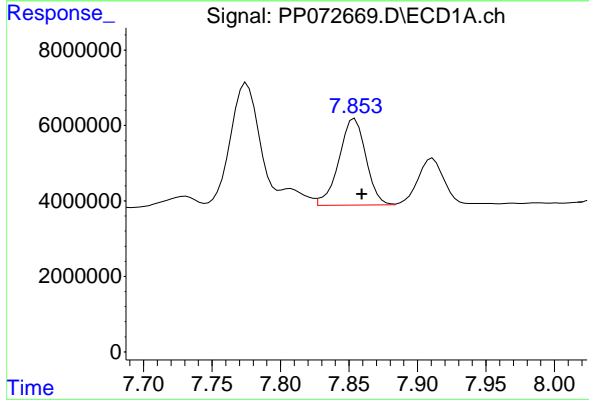
Manual Integrations  
 APPROVED

Reviewed By :Yogesh Patel 06/06/2025  
 Supervised By :mohammad ahmed 06/09/2025



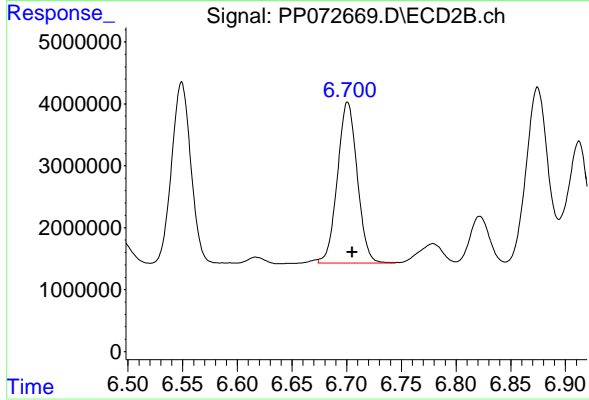
#32 AR-1260-2

R.T.: 6.549 min  
 Delta R.T.: -0.004 min  
 Response: 35870648  
 Conc: 353.68 ng/ml



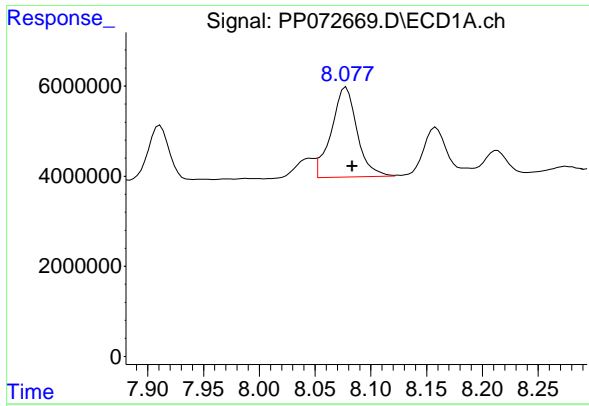
#33 AR-1260-3

R.T.: 7.854 min  
 Delta R.T.: -0.005 min  
 Response: 31335451  
 Conc: 275.18 ng/ml



#33 AR-1260-3

R.T.: 6.700 min  
 Delta R.T.: -0.005 min  
 Response: 32651241  
 Conc: 375.72 ng/ml m



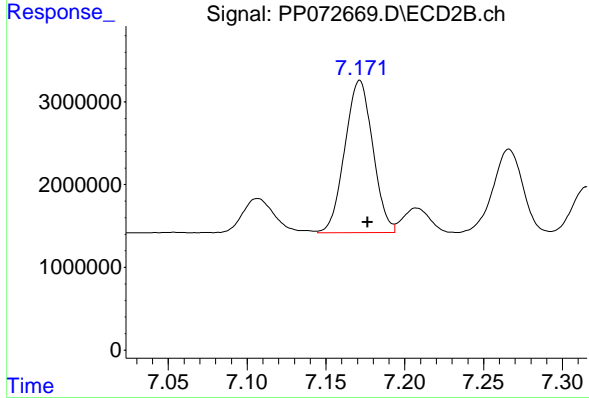
#34 AR-1260-4

R.T.: 8.077 min  
 Delta R.T.: -0.007 min  
 Response: 31732017  
 Conc: 295.72 ng/ml

Instrument : ECD\_P  
 Client Sample Id : TP-1MSD

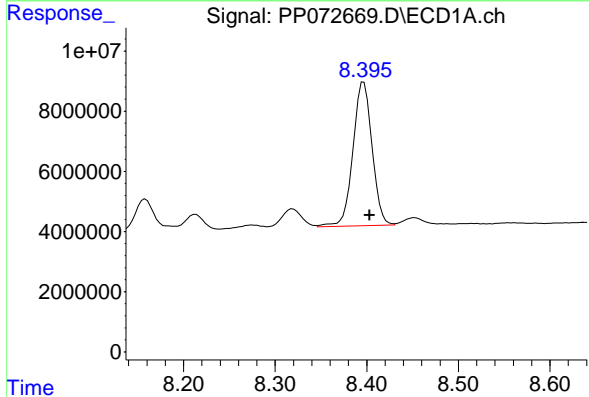
Manual Integrations  
 APPROVED

Reviewed By :Yogesh Patel 06/06/2025  
 Supervised By :mohammad ahmed 06/09/2025



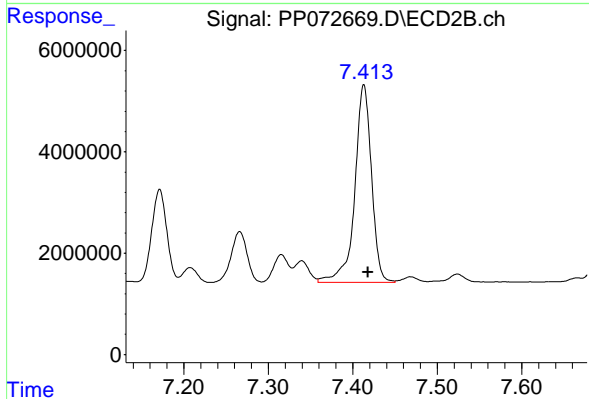
#34 AR-1260-4

R.T.: 7.171 min  
 Delta R.T.: -0.005 min  
 Response: 22755966  
 Conc: 315.66 ng/ml



#35 AR-1260-5

R.T.: 8.397 min  
 Delta R.T.: -0.006 min  
 Response: 69362919  
 Conc: 293.09 ng/ml



#35 AR-1260-5

R.T.: 7.413 min  
 Delta R.T.: -0.005 min  
 Response: 53796420  
 Conc: 309.84 ng/ml