

Data Path : Z:\pestpcbsrv\HPCHEM1\ECD_P\Data\PP060525\
 Data File : PP072671.D
 Signal(s) : Signal #1: ECD1A.ch Signal #2: ECD2B.ch
 Acq On : 05 Jun 2025 17:19
 Operator : YP\AJ
 Sample : Q2207-28
 Misc :
 ALS Vial : 21 Sample Multiplier: 1

Instrument :
 ECD_P
 ClientSampleId :
 BU-703-COMP-04

Integration File signal 1: autoint1.e
 Integration File signal 2: autoint2.e
 Quant Time: Jun 06 02:51:16 2025
 Quant Method : Z:\pestpcbsrv\HPCHEM1\ECD_P\methods\PP051925.M
 Quant Title : GC EXTRACTABLES
 QLast Update : Sat May 24 03:32:20 2025
 Response via : Initial Calibration
 Integrator: ChemStation

Volume Inj. : 2 µl
 Signal #1 Phase : ZB-MR1 Signal #2 Phase: ZB-MR2
 Signal #1 Info : 30Mx0.32mmx 0.50µ Signal #2 Info : 30M x 0.32mm x 0.25µm

Compound	RT#1	RT#2	Resp#1	Resp#2	ng/ml	ng/ml

System Monitoring Compounds						
1) SA Tetrachlo...	4.502	3.797	38124770	34588261	18.960	21.640
2) SA Decachlor...	10.202	8.812	27232340	20116060	16.716	19.002

Target Compounds

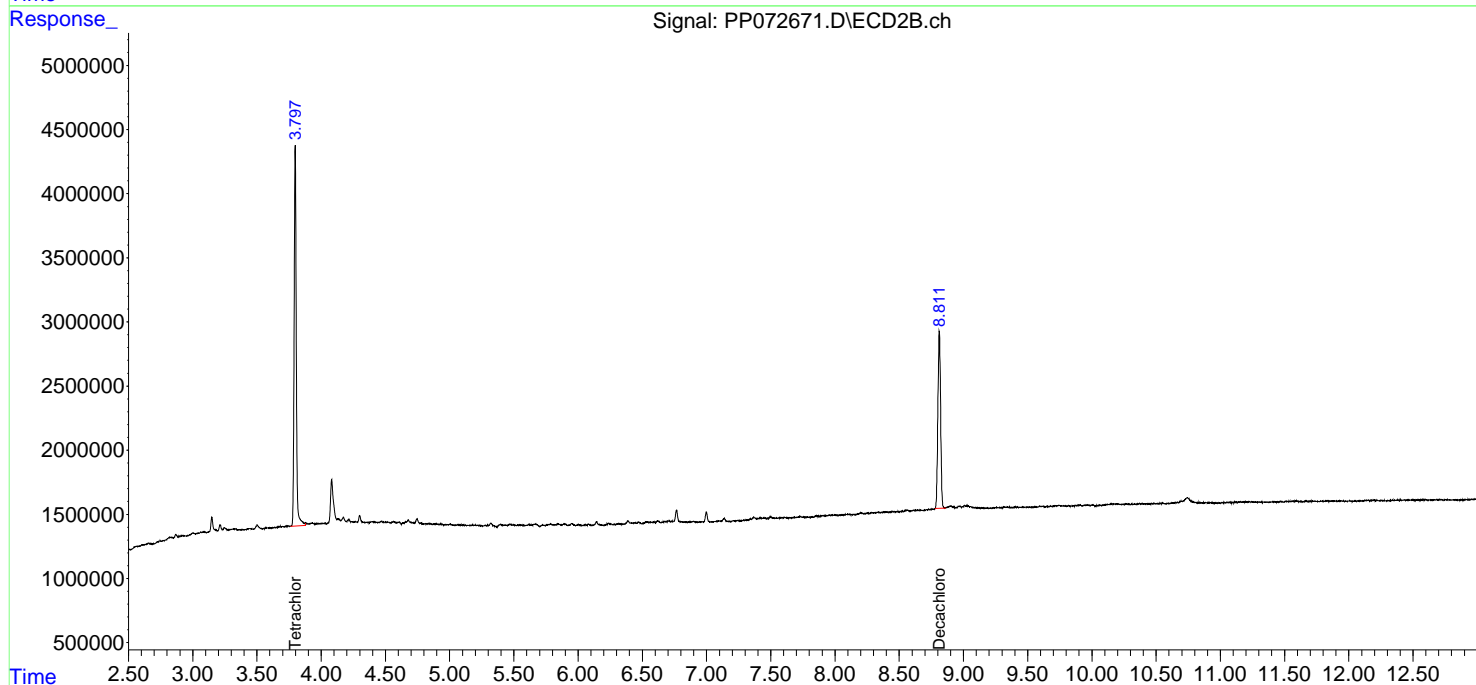
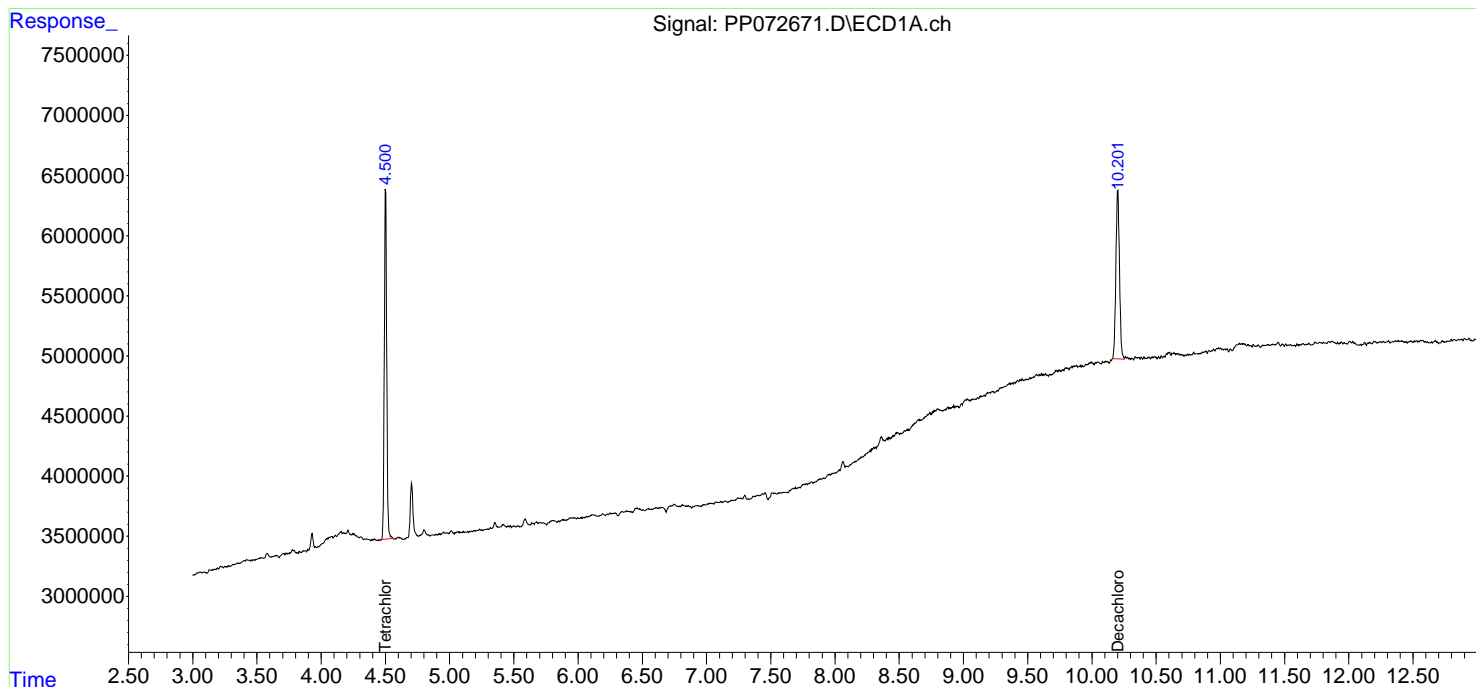
(f)=RT Delta > 1/2 Window (#)=Amounts differ by > 25% (m)=manual int.

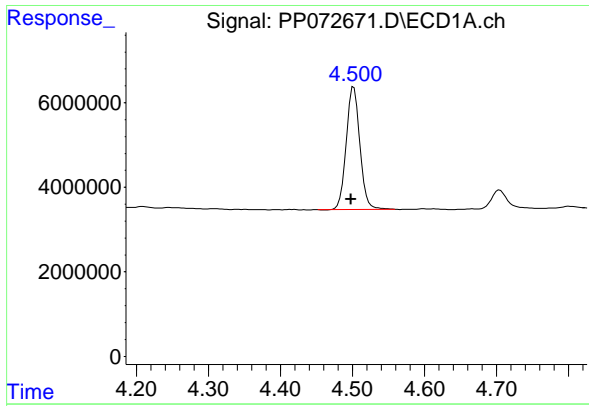
Data Path : Z:\pestpcbsrv\HPCHEM1\ECD_P\Data\PP060525\
Data File : PP072671.D
Signal(s) : Signal #1: ECD1A.ch Signal #2: ECD2B.ch
Acq On : 05 Jun 2025 17:19
Operator : YP\AJ
Sample : Q2207-28
Misc :
ALS Vial : 21 Sample Multiplier: 1

Instrument :
ECD_P
ClientSampleId :
BU-703-COMP-04

Integration File signal 1: autoint1.e
Integration File signal 2: autoint2.e
Quant Time: Jun 06 02:51:16 2025
Quant Method : Z:\pestpcbsrv\HPCHEM1\ECD_P\methods\PP051925.M
Quant Title : GC EXTRACTABLES
QLast Update : Sat May 24 03:32:20 2025
Response via : Initial Calibration
Integrator: ChemStation

Volume Inj. : 2 µl
Signal #1 Phase : ZB-MR1 Signal #2 Phase: ZB-MR2
Signal #1 Info : 30Mx0.32mmx 0.50µm Signal #2 Info : 30M x 0.32mm x 0.25µm

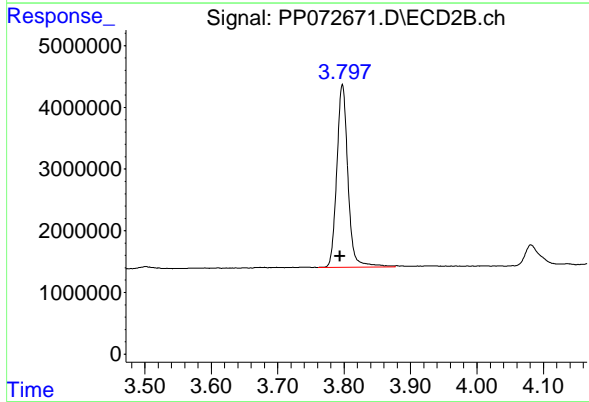




#1 Tetrachloro-m-xylene

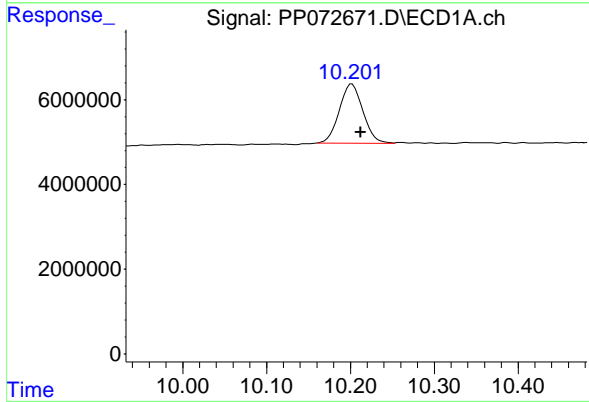
R.T.: 4.502 min
 Delta R.T.: 0.004 min
 Response: 38124770
 Conc: 18.96 ng/ml

Instrument : ECD_P
 ClientSampleId : BU-703-COMP-04



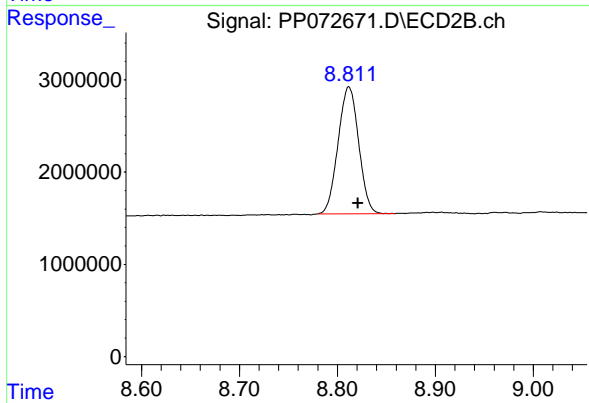
#1 Tetrachloro-m-xylene

R.T.: 3.797 min
 Delta R.T.: 0.004 min
 Response: 34588261
 Conc: 21.64 ng/ml



#2 Decachlorobiphenyl

R.T.: 10.202 min
 Delta R.T.: -0.010 min
 Response: 27232340
 Conc: 16.72 ng/ml



#2 Decachlorobiphenyl

R.T.: 8.812 min
 Delta R.T.: -0.009 min
 Response: 20116060
 Conc: 19.00 ng/ml