

Data Path : Z:\pestpcbsrv\HPCHEM1\ECD\_P\Data\PP060525\  
 Data File : PP072676.D  
 Signal(s) : Signal #1: ECD1A.ch Signal #2: ECD2B.ch  
 Acq On : 05 Jun 2025 18:40  
 Operator : YP\AJ  
 Sample : Q2208-28  
 Misc :  
 ALS Vial : 26 Sample Multiplier: 1

Instrument :  
 ECD\_P  
 ClientSampleId :  
 BU-703-COMP-09

Integration File signal 1: autoint1.e  
 Integration File signal 2: autoint2.e  
 Quant Time: Jun 06 02:52:42 2025  
 Quant Method : Z:\pestpcbsrv\HPCHEM1\ECD\_P\methods\PP051925.M  
 Quant Title : GC EXTRACTABLES  
 QLast Update : Sat May 24 03:32:20 2025  
 Response via : Initial Calibration  
 Integrator: ChemStation

Volume Inj. : 2 µl  
 Signal #1 Phase : ZB-MR1 Signal #2 Phase: ZB-MR2  
 Signal #1 Info : 30Mx0.32mmx 0.50µ Signal #2 Info : 30M x 0.32mm x 0.25µm

Compound	RT#1	RT#2	Resp#1	Resp#2	ng/ml	ng/ml
-----						
System Monitoring Compounds						
1) SA Tetrachlo...	4.502	3.796	41774738	37740043	20.775	23.612
2) SA Decachlor...	10.203	8.811	31474676	23321840	19.320	22.031

Target Compounds

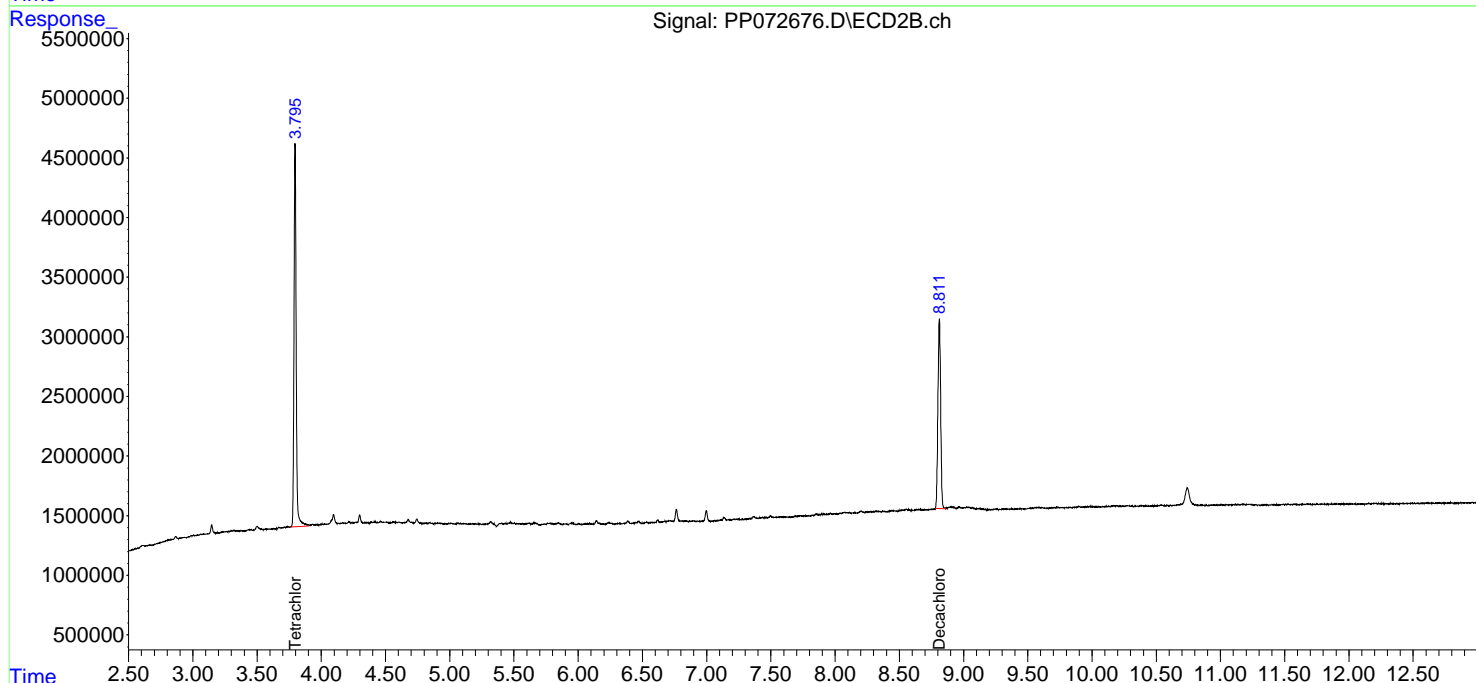
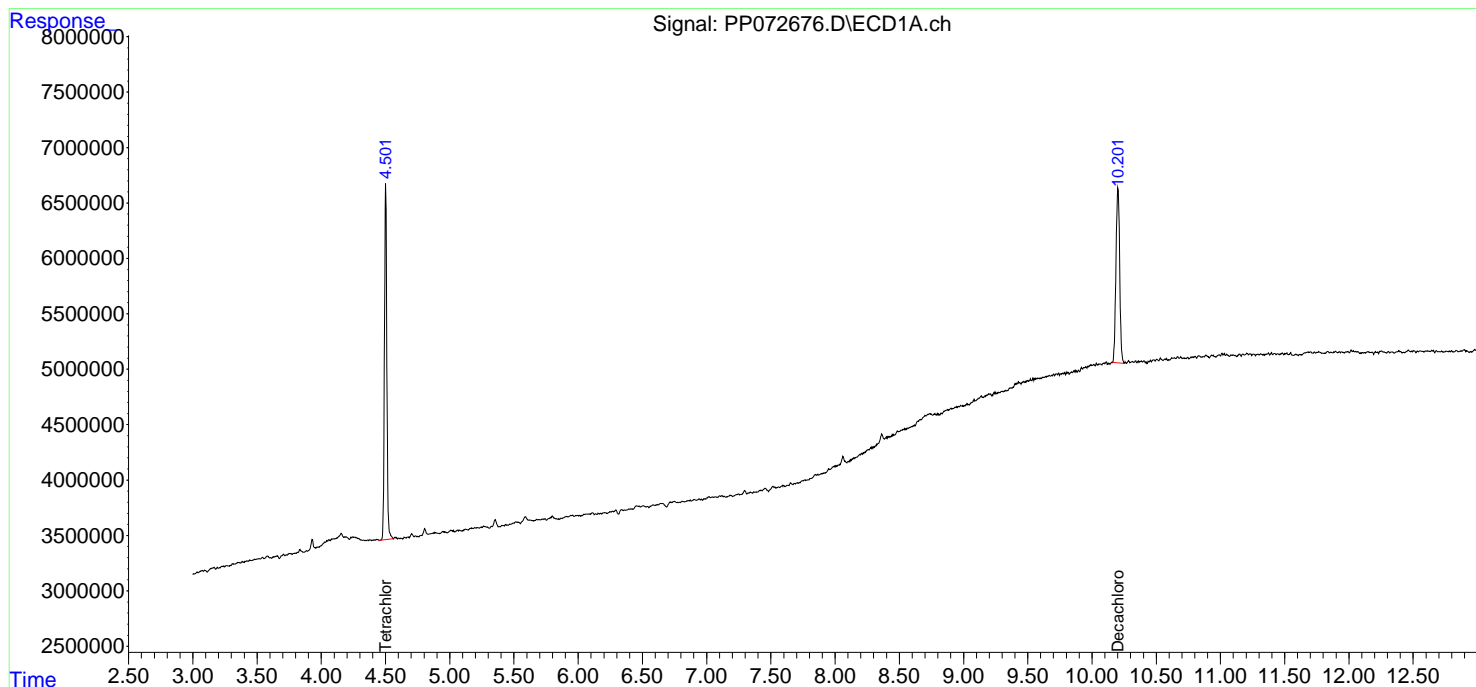
(f)=RT Delta > 1/2 Window (#)=Amounts differ by > 25% (m)=manual int.

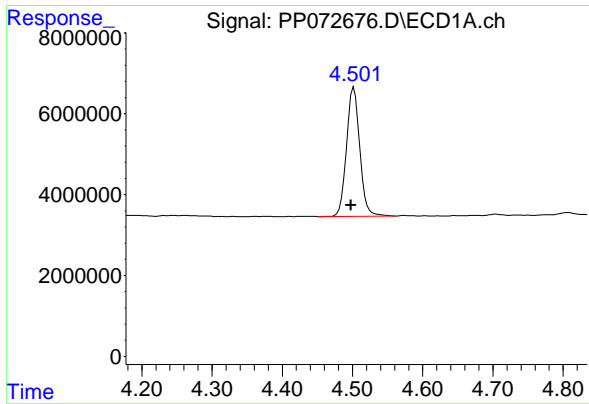
Data Path : Z:\pestpcbsrv\HPCHEM1\ECD\_P\Data\PP060525\  
 Data File : PP072676.D  
 Signal(s) : Signal #1: ECD1A.ch Signal #2: ECD2B.ch  
 Acq On : 05 Jun 2025 18:40  
 Operator : YP\AJ  
 Sample : Q2208-28  
 Misc :  
 ALS Vial : 26 Sample Multiplier: 1

Instrument :  
 ECD\_P  
 ClientSampleId :  
 BU-703-COMP-09

Integration File signal 1: autoint1.e  
 Integration File signal 2: autoint2.e  
 Quant Time: Jun 06 02:52:42 2025  
 Quant Method : Z:\pestpcbsrv\HPCHEM1\ECD\_P\methods\PP051925.M  
 Quant Title : GC EXTRACTABLES  
 QLast Update : Sat May 24 03:32:20 2025  
 Response via : Initial Calibration  
 Integrator: ChemStation

Volume Inj. : 2 µl  
 Signal #1 Phase : ZB-MR1 Signal #2 Phase: ZB-MR2  
 Signal #1 Info : 30Mx0.32mmx 0.50µm Signal #2 Info : 30M x 0.32mm x 0.25µm

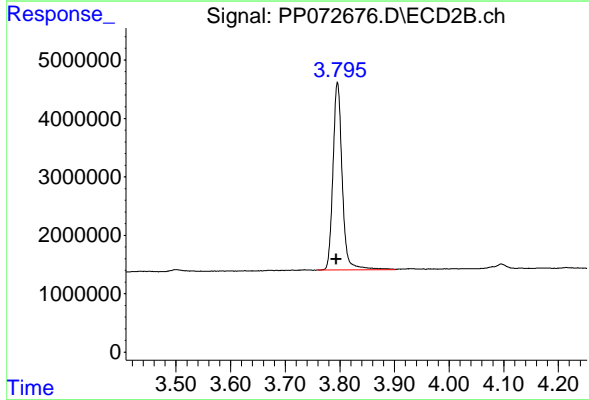




#1 Tetrachloro-m-xylene

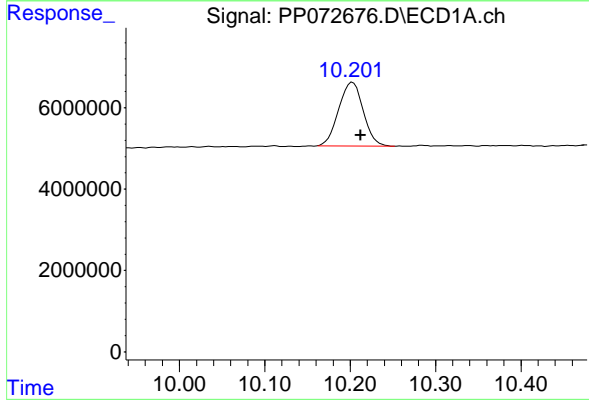
R.T.: 4.502 min  
 Delta R.T.: 0.004 min  
 Response: 41774738  
 Conc: 20.78 ng/ml

Instrument :  
 ECD\_P  
 ClientSampleId :  
 BU-703-COMP-09



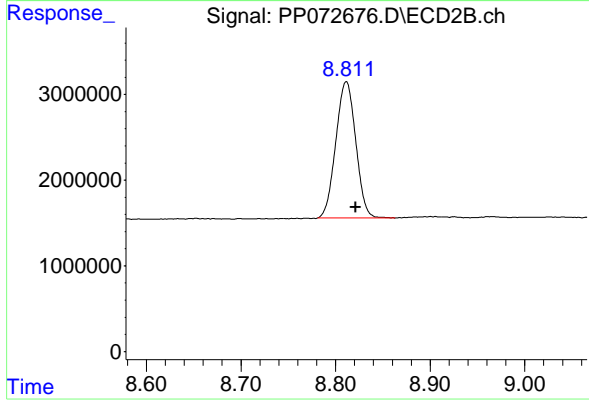
#1 Tetrachloro-m-xylene

R.T.: 3.796 min  
 Delta R.T.: 0.002 min  
 Response: 37740043  
 Conc: 23.61 ng/ml



#2 Decachlorobiphenyl

R.T.: 10.203 min  
 Delta R.T.: -0.009 min  
 Response: 31474676  
 Conc: 19.32 ng/ml



#2 Decachlorobiphenyl

R.T.: 8.811 min  
 Delta R.T.: -0.010 min  
 Response: 23321840  
 Conc: 22.03 ng/ml