

Data Path : Z:\pestpcbsrv\HPCHEM1\ECD_P\Data\PP060525\
 Data File : PP072677.D
 Signal(s) : Signal #1: ECD1A.ch Signal #2: ECD2B.ch
 Acq On : 05 Jun 2025 20:02
 Operator : YP\AJ
 Sample : AR1660CCC500
 Misc :
 ALS Vial : 3 Sample Multiplier: 1

Instrument :
 ECD_P
ClientSampleId :
 AR1660CCC500

Manual Integrations
APPROVED
 Reviewed By :Yogesh Patel 06/06/2025
 Supervised By :mohammad ahmed 06/09/2025

Integration File signal 1: autoint1.e
 Integration File signal 2: autoint2.e
 Quant Time: Jun 06 02:52:59 2025
 Quant Method : Z:\pestpcbsrv\HPCHEM1\ECD_P\methods\PP051925.M
 Quant Title : GC EXTRACTABLES
 QLast Update : Sat May 24 03:32:20 2025
 Response via : Initial Calibration
 Integrator: ChemStation

Volume Inj. : 2 µl
 Signal #1 Phase : ZB-MR1 Signal #2 Phase: ZB-MR2
 Signal #1 Info : 30Mx0.32mmx 0.50µ Signal #2 Info : 30M x 0.32mm x 0.25µm

Compound	RT#1	RT#2	Resp#1	Resp#2	ng/ml	ng/ml

System Monitoring Compounds						
1) SA Tetrachlo...	4.501	3.796	95543184	82160200	47.515	51.403
2) SA Decachlor...	10.201	8.810	81128788	56762789	49.799m	53.621m
Target Compounds						
3) L1 AR-1016-1	5.653	4.876	31396264	31122472	418.150	506.637
4) L1 AR-1016-2	5.675	4.895	49421104	45757756	461.915	521.222
5) L1 AR-1016-3	5.737	5.071	29622446	24692672	451.803	518.160
6) L1 AR-1016-4	5.835	5.114	24701517	19535698	463.704	513.485
7) L1 AR-1016-5	6.127	5.327	23066781	28859608	471.625	579.226
31) L7 AR-1260-1	7.244	6.359	44855567	42780189	479.253	536.404
32) L7 AR-1260-2	7.497	6.547	67267726	51079341	468.798	503.631
33) L7 AR-1260-3	7.855	6.699	53672950	46054135	471.350	529.953m
34) L7 AR-1260-4	8.079	7.170	50249063	37842762	468.293	524.931
35) L7 AR-1260-5	8.398	7.412	114.1E6	91071437	481.988	524.533

(f)=RT Delta > 1/2 Window (#)=Amounts differ by > 25% (m)=manual int.

Data Path : Z:\pestpcbsrv\HPCHEM1\ECD_P\Data\PP060525\
 Data File : PP072677.D
 Signal(s) : Signal #1: ECD1A.ch Signal #2: ECD2B.ch
 Acq On : 05 Jun 2025 20:02
 Operator : YP\AJ
 Sample : AR1660CCC500
 Misc :
 ALS Vial : 3 Sample Multiplier: 1

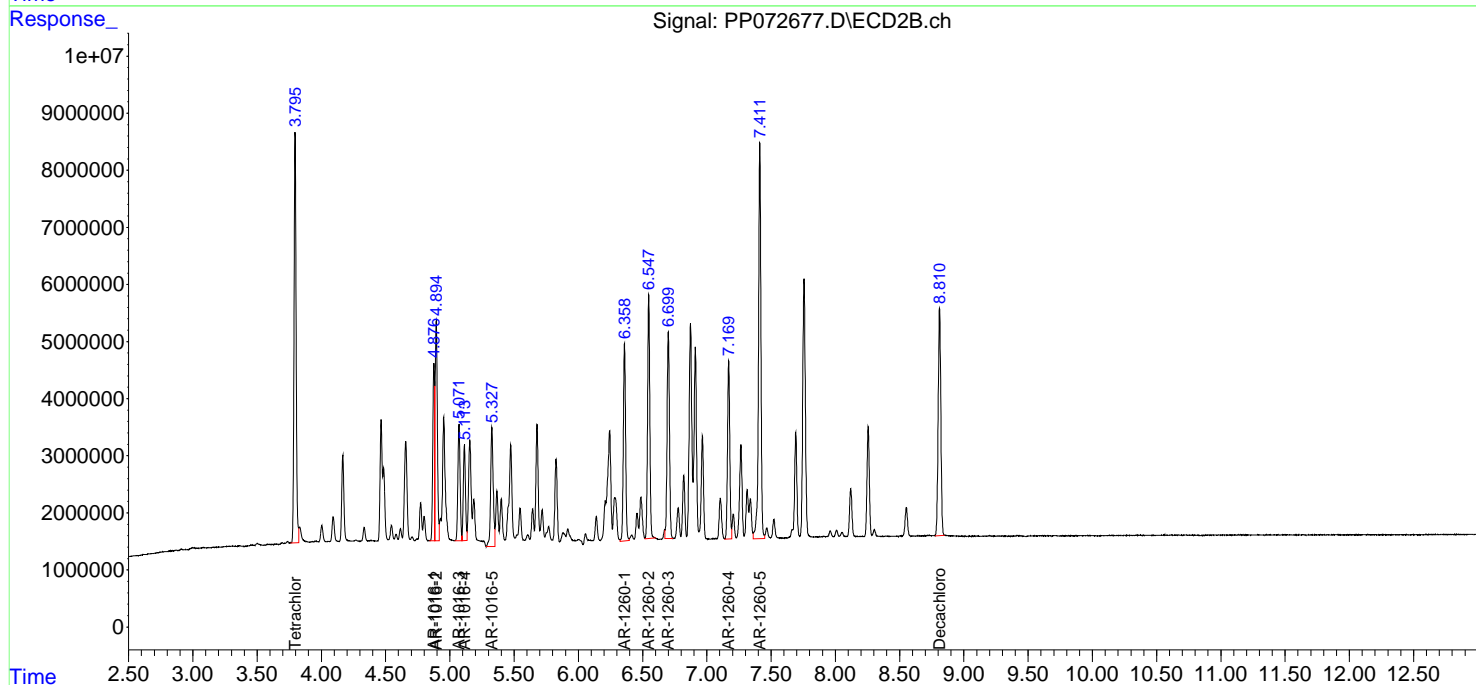
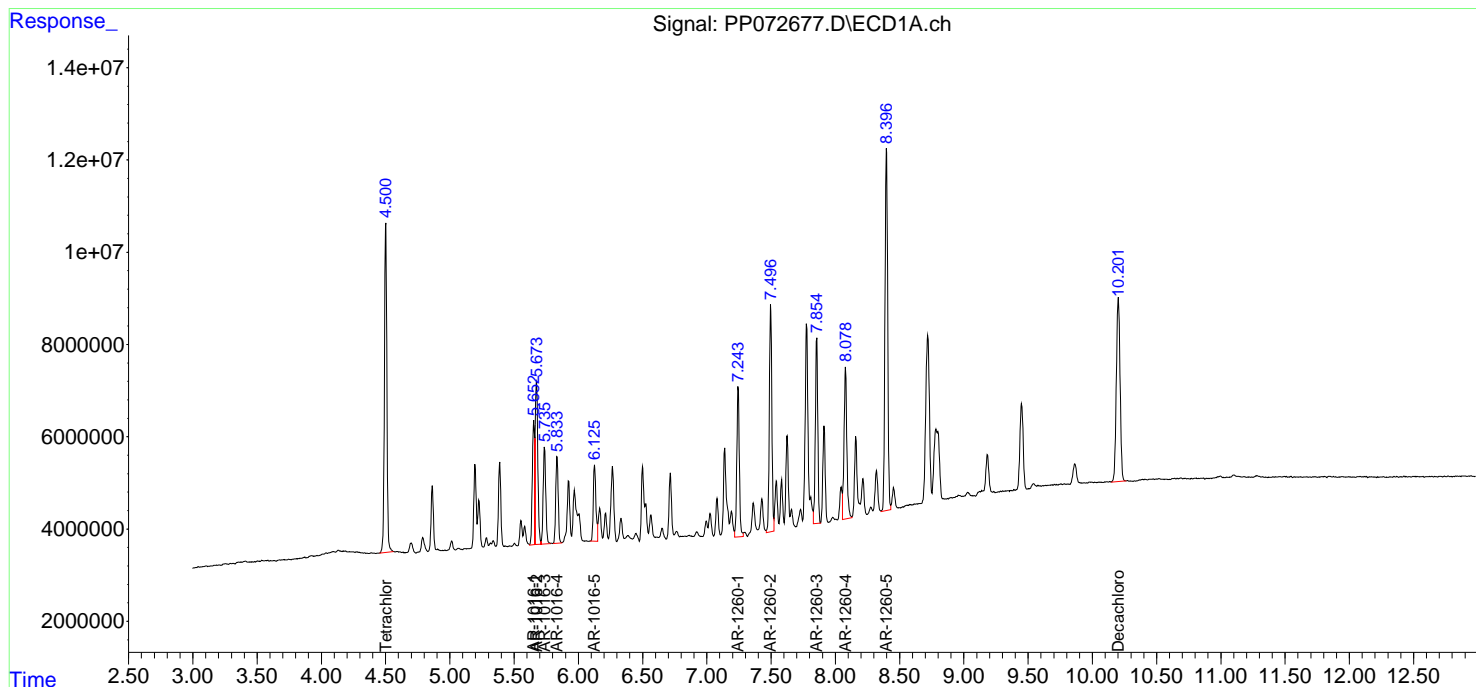
Instrument :
 ECD_P
 ClientSampleId :
 AR1660CCC500

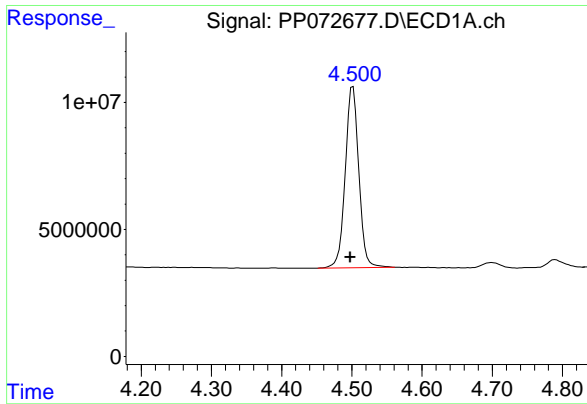
Manual Integrations
 APPROVED

Reviewed By :Yogesh Patel 06/06/2025
 Supervised By :mohammad ahmed 06/09/2025

Integration File signal 1: autoint1.e
 Integration File signal 2: autoint2.e
 Quant Time: Jun 06 02:52:59 2025
 Quant Method : Z:\pestpcbsrv\HPCHEM1\ECD_P\methods\PP051925.M
 Quant Title : GC EXTRACTABLES
 QLast Update : Sat May 24 03:32:20 2025
 Response via : Initial Calibration
 Integrator: ChemStation

Volume Inj. : 2 µl
 Signal #1 Phase : ZB-MR1 Signal #2 Phase: ZB-MR2
 Signal #1 Info : 30Mx0.32mmx 0.50µm Signal #2 Info : 30M x 0.32mm x 0.25µm





#1 Tetrachloro-m-xylene

R.T.: 4.501 min
 Delta R.T.: 0.003 min
 Response: 95543184
 Conc: 47.51 ng/ml

Instrument :

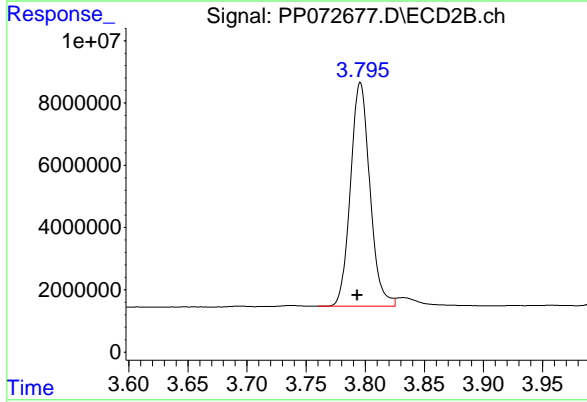
ECD_P

Client Sample Id :

AR1660CCC500

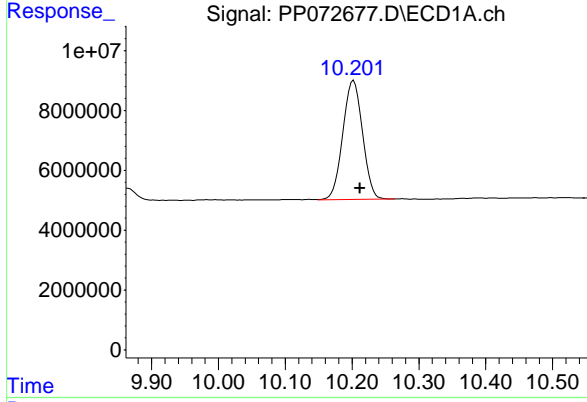
Manual Integrations
 APPROVED

Reviewed By :Yogesh Patel 06/06/2025
 Supervised By :mohammad ahmed 06/09/2025



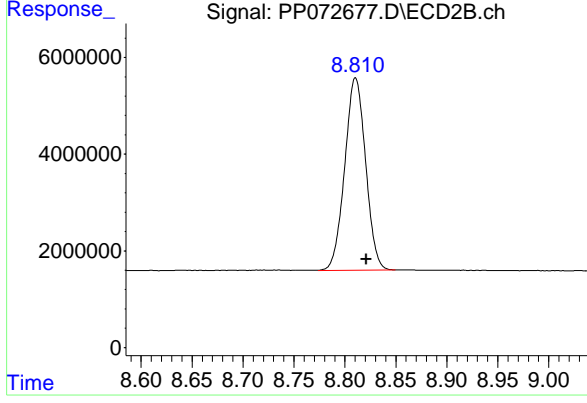
#1 Tetrachloro-m-xylene

R.T.: 3.796 min
 Delta R.T.: 0.002 min
 Response: 82160200
 Conc: 51.40 ng/ml



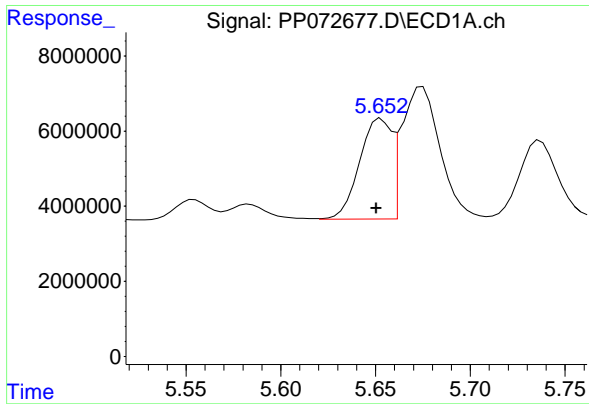
#2 Decachlorobiphenyl

R.T.: 10.201 min
 Delta R.T.: -0.011 min
 Response: 81128788
 Conc: 49.80 ng/ml m



#2 Decachlorobiphenyl

R.T.: 8.810 min
 Delta R.T.: -0.011 min
 Response: 56762789
 Conc: 53.62 ng/ml m



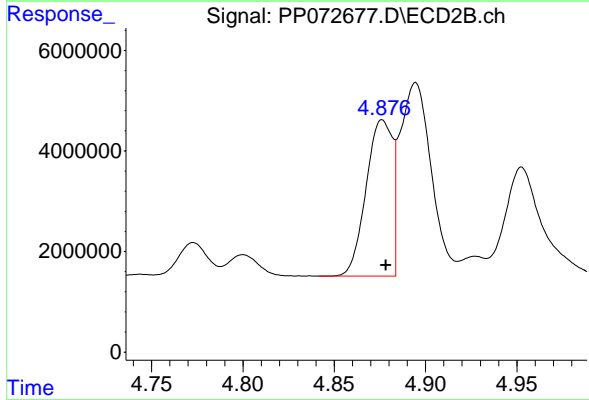
#3 AR-1016-1

R.T.: 5.653 min
 Delta R.T.: 0.003 min
 Response: 31396264
 Conc: 418.15 ng/ml

Instrument : ECD_P
 ClientSampleId : AR1660CCC500

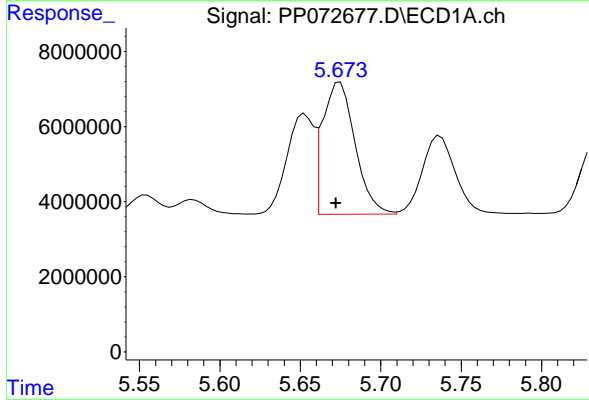
Manual Integrations
 APPROVED

Reviewed By :Yogesh Patel 06/06/2025
 Supervised By :mohammad ahmed 06/09/2025



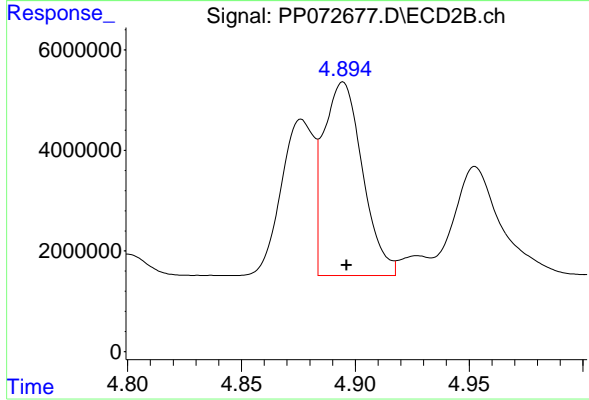
#3 AR-1016-1

R.T.: 4.876 min
 Delta R.T.: -0.002 min
 Response: 31122472
 Conc: 506.64 ng/ml



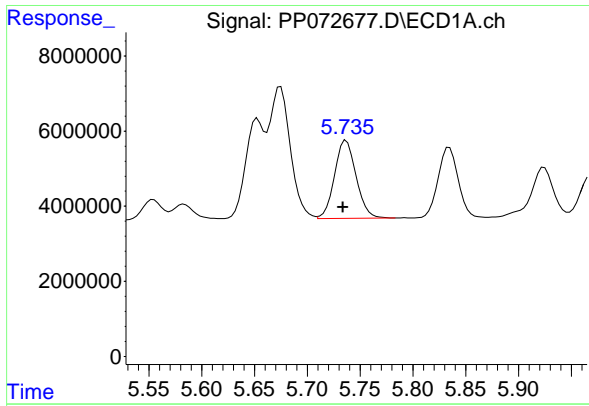
#4 AR-1016-2

R.T.: 5.675 min
 Delta R.T.: 0.003 min
 Response: 49421104
 Conc: 461.92 ng/ml



#4 AR-1016-2

R.T.: 4.895 min
 Delta R.T.: -0.002 min
 Response: 45757756
 Conc: 521.22 ng/ml



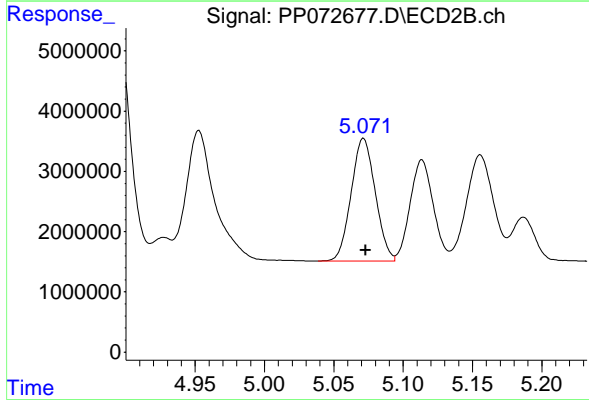
#5 AR-1016-3

R.T.: 5.737 min
 Delta R.T.: 0.003 min
 Response: 29622446
 Conc: 451.80 ng/ml

Instrument : ECD_P
 Client Sample Id : AR1660CCC500

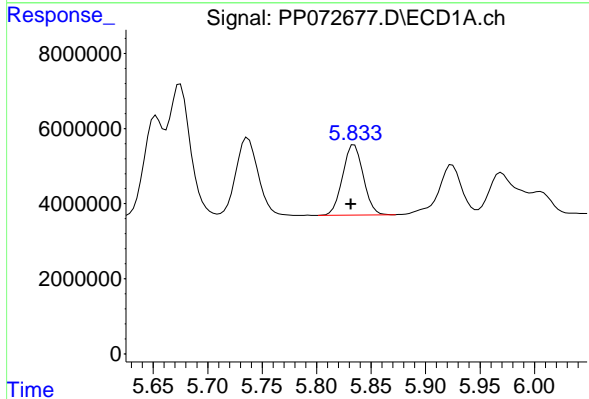
Manual Integrations
 APPROVED

Reviewed By :Yogesh Patel 06/06/2025
 Supervised By :mohammad ahmed 06/09/2025



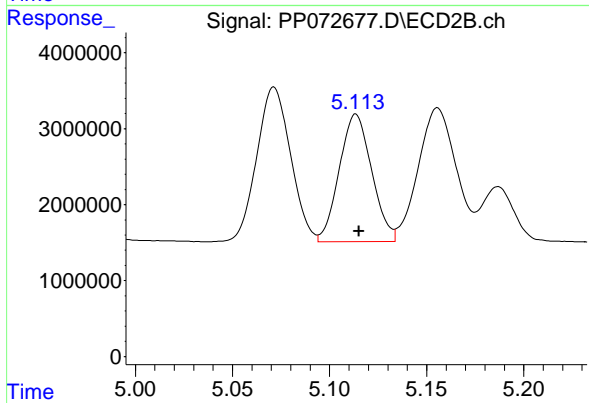
#5 AR-1016-3

R.T.: 5.071 min
 Delta R.T.: -0.002 min
 Response: 24692672
 Conc: 518.16 ng/ml



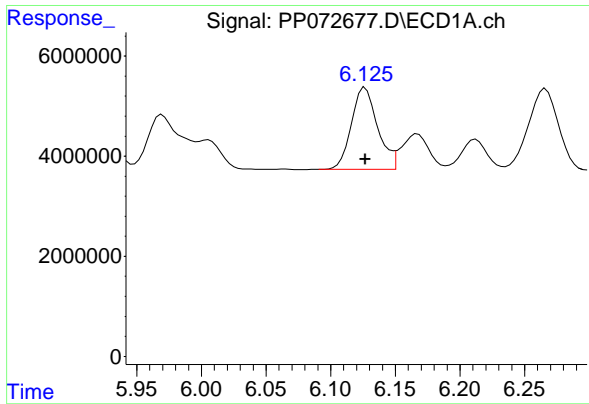
#6 AR-1016-4

R.T.: 5.835 min
 Delta R.T.: 0.003 min
 Response: 24701517
 Conc: 463.70 ng/ml



#6 AR-1016-4

R.T.: 5.114 min
 Delta R.T.: -0.002 min
 Response: 19535698
 Conc: 513.48 ng/ml



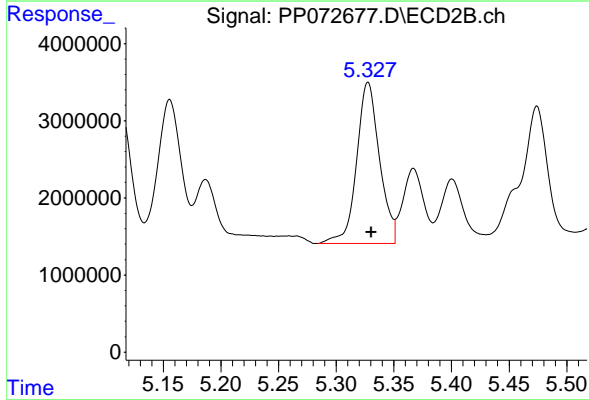
#7 AR-1016-5

R.T.: 6.127 min
 Delta R.T.: 0.000 min
 Response: 23066781
 Conc: 471.62 ng/ml

Instrument : ECD_P
 ClientSampleId : AR1660CCC500

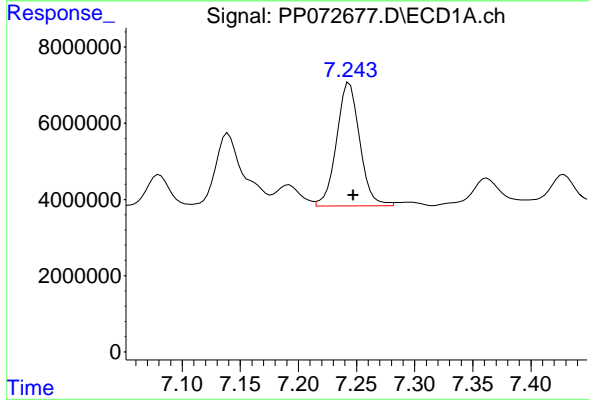
Manual Integrations
 APPROVED

Reviewed By :Yogesh Patel 06/06/2025
 Supervised By :mohammad ahmed 06/09/2025



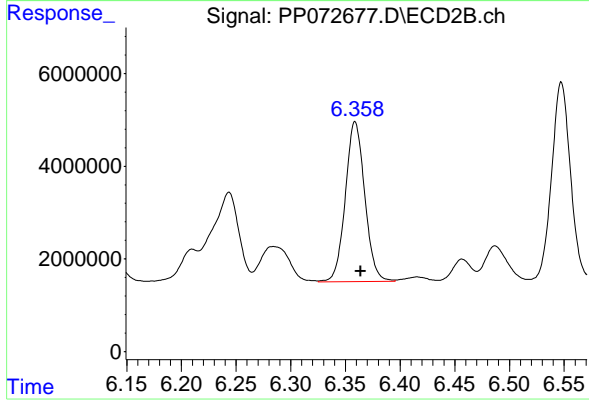
#7 AR-1016-5

R.T.: 5.327 min
 Delta R.T.: -0.003 min
 Response: 28859608
 Conc: 579.23 ng/ml



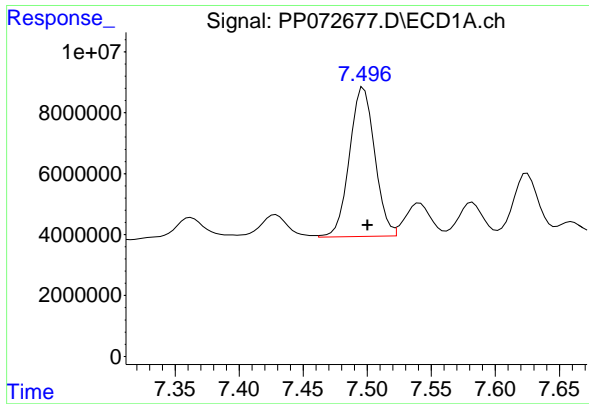
#31 AR-1260-1

R.T.: 7.244 min
 Delta R.T.: -0.003 min
 Response: 44855567
 Conc: 479.25 ng/ml



#31 AR-1260-1

R.T.: 6.359 min
 Delta R.T.: -0.005 min
 Response: 42780189
 Conc: 536.40 ng/ml



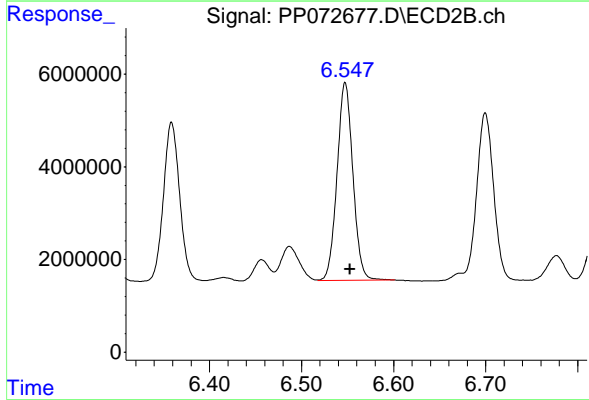
#32 AR-1260-2

R.T.: 7.497 min
 Delta R.T.: -0.003 min
 Response: 67267726
 Conc: 468.80 ng/ml

Instrument : ECD_P
 ClientSampleId : AR1660CCC500

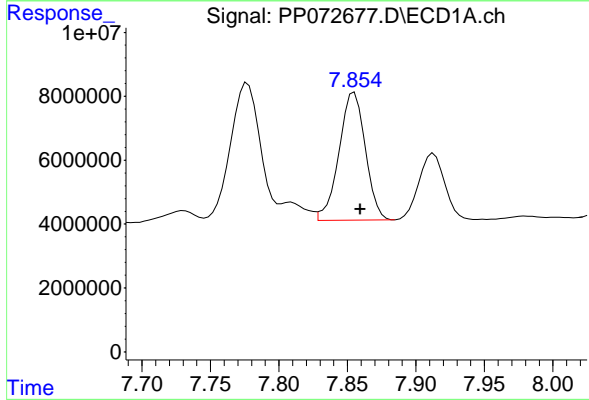
Manual Integrations
 APPROVED

Reviewed By :Yogesh Patel 06/06/2025
 Supervised By :mohammad ahmed 06/09/2025



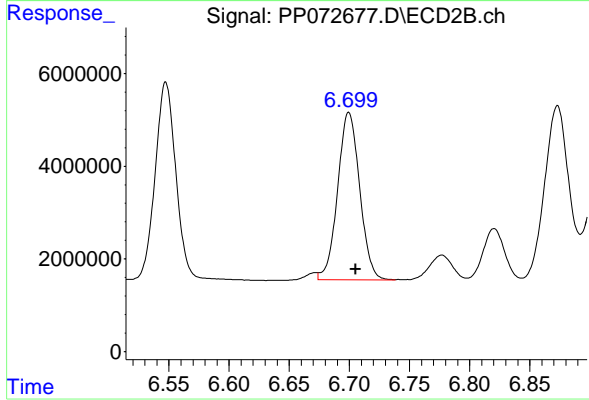
#32 AR-1260-2

R.T.: 6.547 min
 Delta R.T.: -0.005 min
 Response: 51079341
 Conc: 503.63 ng/ml



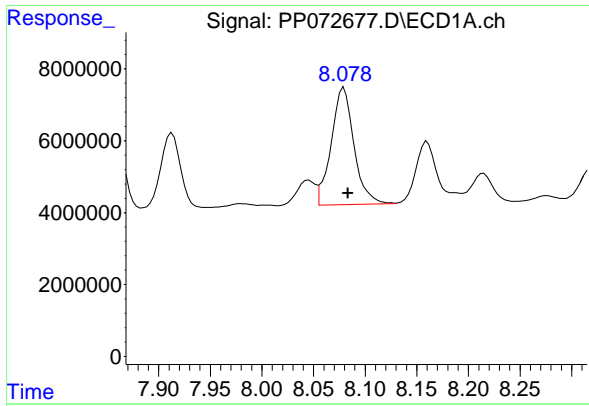
#33 AR-1260-3

R.T.: 7.855 min
 Delta R.T.: -0.004 min
 Response: 53672950
 Conc: 471.35 ng/ml



#33 AR-1260-3

R.T.: 6.699 min
 Delta R.T.: -0.006 min
 Response: 46054135
 Conc: 529.95 ng/ml m



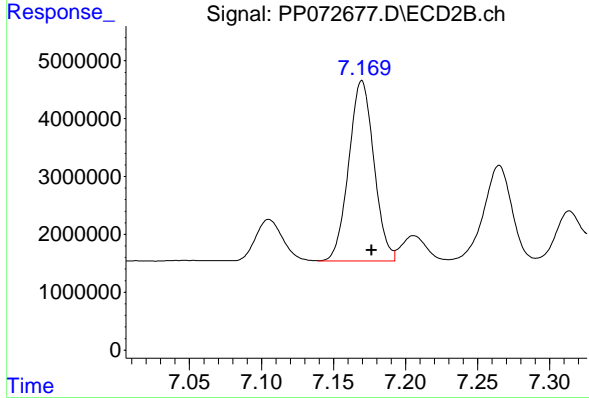
#34 AR-1260-4

R.T.: 8.079 min
 Delta R.T.: -0.004 min
 Response: 50249063
 Conc: 468.29 ng/ml

Instrument : ECD_P
 Client Sample Id : AR1660CCC500

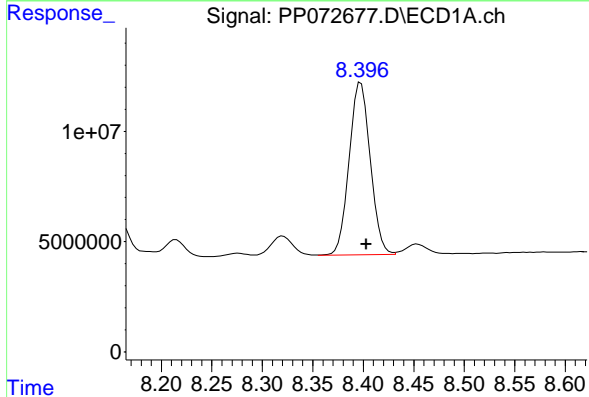
Manual Integrations
 APPROVED

Reviewed By :Yogesh Patel 06/06/2025
 Supervised By :mohammad ahmed 06/09/2025



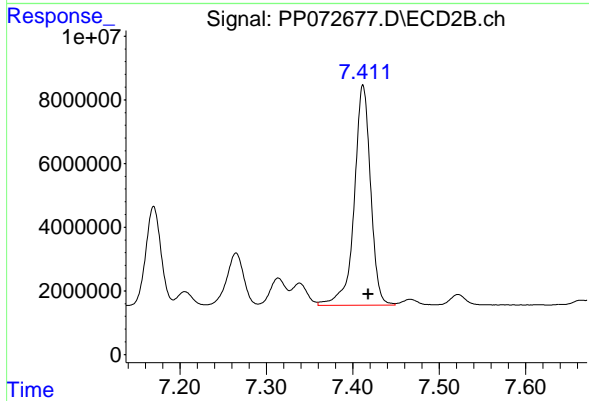
#34 AR-1260-4

R.T.: 7.170 min
 Delta R.T.: -0.007 min
 Response: 37842762
 Conc: 524.93 ng/ml



#35 AR-1260-5

R.T.: 8.398 min
 Delta R.T.: -0.005 min
 Response: 114068413
 Conc: 481.99 ng/ml



#35 AR-1260-5

R.T.: 7.412 min
 Delta R.T.: -0.006 min
 Response: 91071437
 Conc: 524.53 ng/ml