

Data Path : Z:\pestpcbsrv\HPCHEM1\ECD_P\Data\PP060625\
 Data File : PP072700.D
 Signal(s) : Signal #1: ECD1A.ch Signal #2: ECD2B.ch
 Acq On : 06 Jun 2025 17:34
 Operator : YP\AJ
 Sample : AR1248CCC500
 Misc :
 ALS Vial : 5 Sample Multiplier: 1

Instrument :
 ECD_P
ClientSampleId :
 AR1248CCC500

Manual Integrations
APPROVED

Reviewed By :Yogesh Patel 06/09/2025
 Supervised By :mohammad ahmed 06/10/2025

Integration File signal 1: autoint1.e
 Integration File signal 2: autoint2.e
 Quant Time: Jun 06 22:43:23 2025
 Quant Method : Z:\pestpcbsrv\HPCHEM1\ECD_P\methods\PP051925.M
 Quant Title : GC EXTRACTABLES
 QLast Update : Sat May 24 03:32:20 2025
 Response via : Initial Calibration
 Integrator: ChemStation

Volume Inj. : 2 µl
 Signal #1 Phase : ZB-MR1 Signal #2 Phase: ZB-MR2
 Signal #1 Info : 30Mx0.32mmx 0.50µ Signal #2 Info : 30M x 0.32mm x 0.25µm

Compound	RT#1	RT#2	Resp#1	Resp#2	ng/ml	ng/ml

System Monitoring Compounds						
1) SA Tetrachlo...	4.502	3.797	92174941	82222221	45.840	51.442
2) SA Decachlor...	10.204	8.812	69810482	52182385	42.852	49.294m
Target Compounds						
21) L5 AR-1248-1	5.653	4.878	20584207	20540584	425.333	474.142
22) L5 AR-1248-2	5.924	5.114	27818329	27378100	458.745	484.763
23) L5 AR-1248-3	6.127	5.157	31620097	28611261	477.789	484.058
24) L5 AR-1248-4	6.526	5.328	37081938	33984049	424.317	487.906
25) L5 AR-1248-5	6.565	5.720	35884186	33622371	432.206	482.114

(f)=RT Delta > 1/2 Window (#)=Amounts differ by > 25% (m)=manual int.

Data Path : Z:\pestpcbsrv\HPCHEM1\ECD_P\Data\PP060625\
 Data File : PP072700.D
 Signal(s) : Signal #1: ECD1A.ch Signal #2: ECD2B.ch
 Acq On : 06 Jun 2025 17:34
 Operator : YP\AJ
 Sample : AR1248CCC500
 Misc :
 ALS Vial : 5 Sample Multiplier: 1

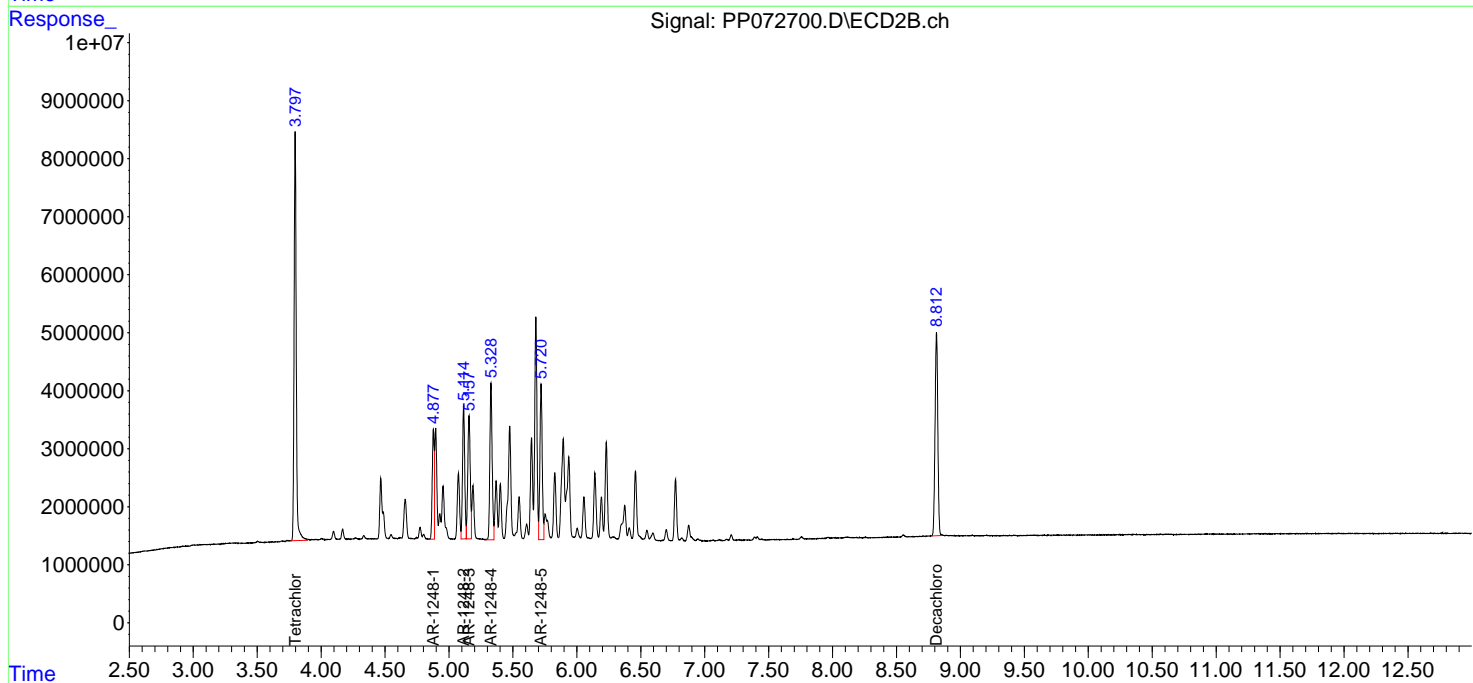
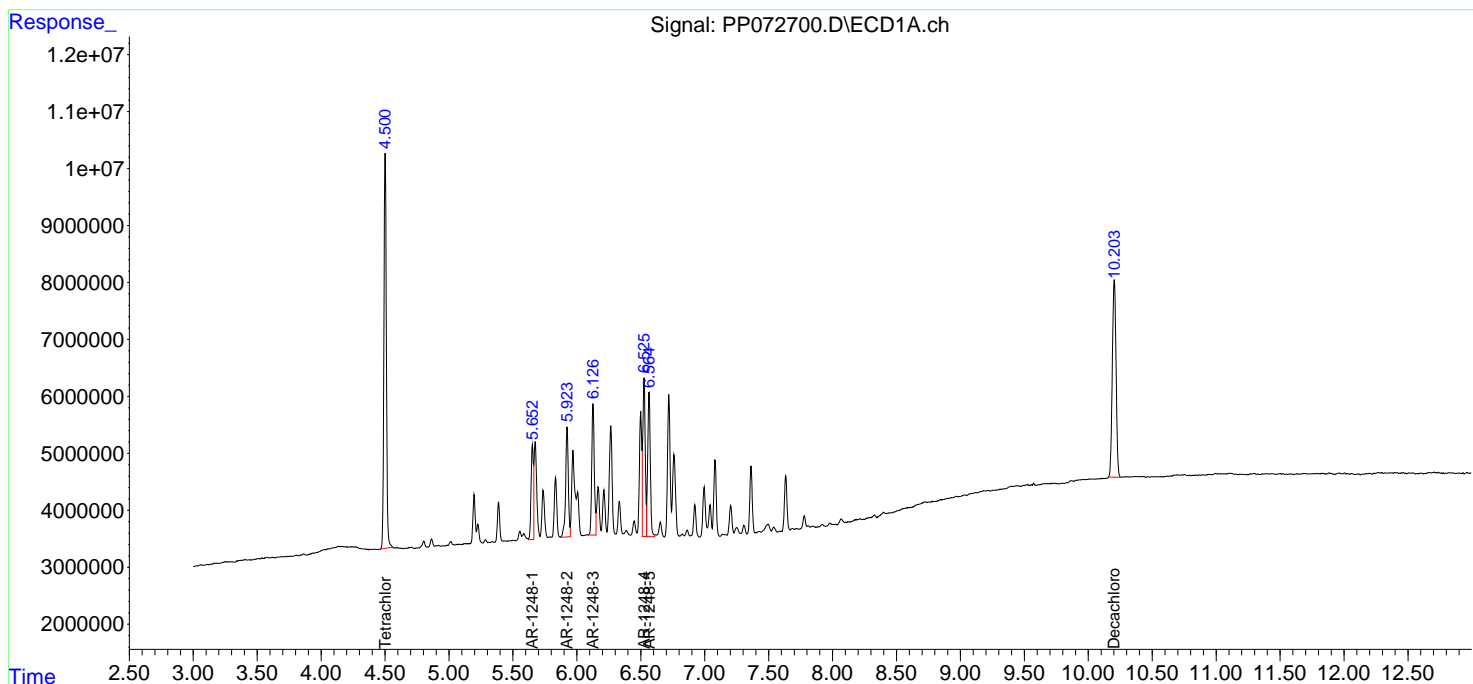
Instrument :
 ECD_P
 ClientSampleId :
 AR1248CCC500

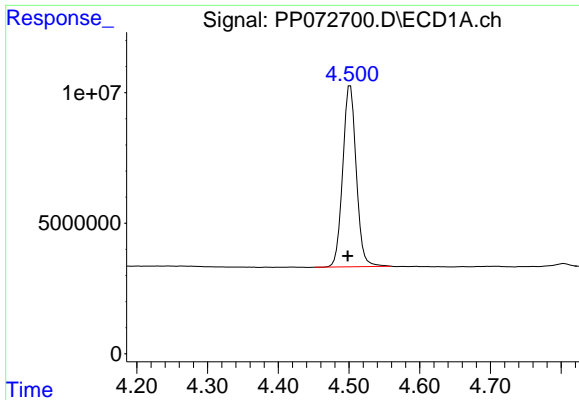
Manual Integrations
 APPROVED

Reviewed By :Yogesh Patel 06/09/2025
 Supervised By :mohammad ahmed 06/10/2025

Integration File signal 1: autoint1.e
 Integration File signal 2: autoint2.e
 Quant Time: Jun 06 22:43:23 2025
 Quant Method : Z:\pestpcbsrv\HPCHEM1\ECD_P\methods\PP051925.M
 Quant Title : GC EXTRACTABLES
 QLast Update : Sat May 24 03:32:20 2025
 Response via : Initial Calibration
 Integrator: ChemStation

Volume Inj. : 2 µl
 Signal #1 Phase : ZB-MR1 Signal #2 Phase: ZB-MR2
 Signal #1 Info : 30Mx0.32mmx 0.50µ Signal #2 Info : 30M x 0.32mm x 0.25µm



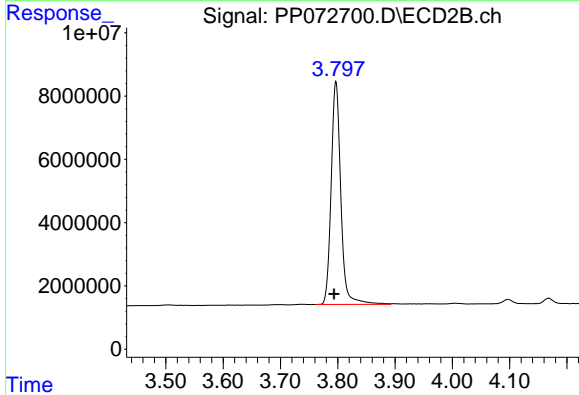


#1 Tetrachloro-m-xylene
 R.T.: 4.502 min
 Delta R.T.: 0.004 min
 Response: 92174941
 Conc: 45.84 ng/ml

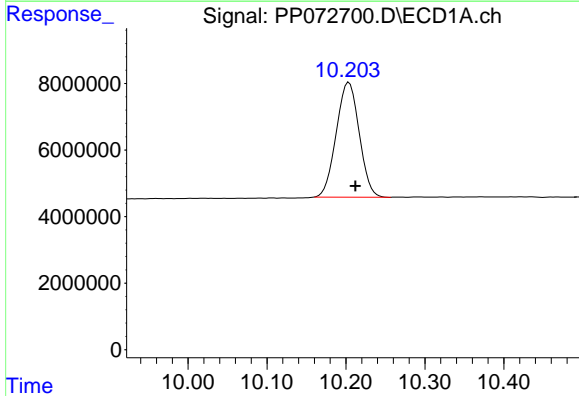
Instrument :
 ECD_P
 ClientSampleId :
 AR1248CCC500

Manual Integrations
 APPROVED

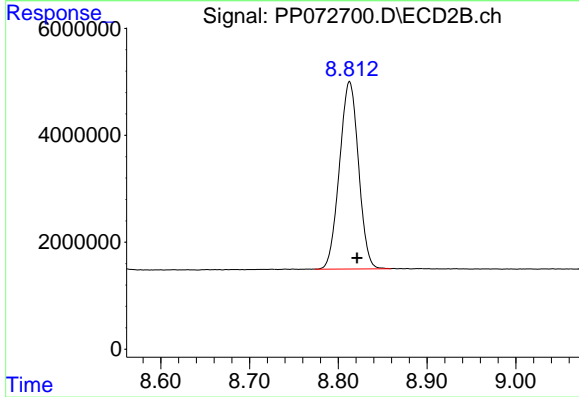
Reviewed By :Yogesh Patel 06/09/2025
 Supervised By :mohammad ahmed 06/10/2025



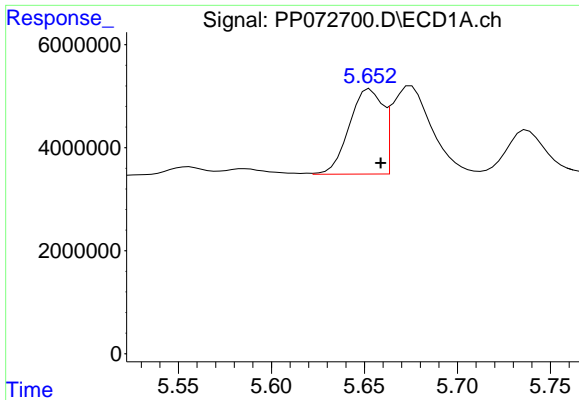
#1 Tetrachloro-m-xylene
 R.T.: 3.797 min
 Delta R.T.: 0.003 min
 Response: 82222221
 Conc: 51.44 ng/ml



#2 Decachlorobiphenyl
 R.T.: 10.204 min
 Delta R.T.: -0.008 min
 Response: 69810482
 Conc: 42.85 ng/ml



#2 Decachlorobiphenyl
 R.T.: 8.812 min
 Delta R.T.: -0.009 min
 Response: 52182385
 Conc: 49.29 ng/ml m



#21 AR-1248-1

R.T.: 5.653 min
 Delta R.T.: -0.006 min
 Response: 20584207
 Conc: 425.33 ng/ml

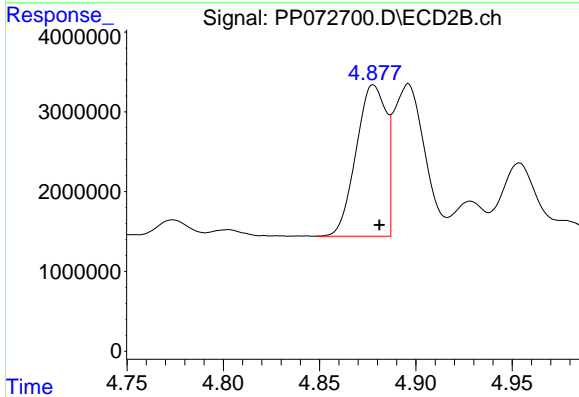
Instrument :

ECD_P

ClientSampleId :
 AR1248CCC500

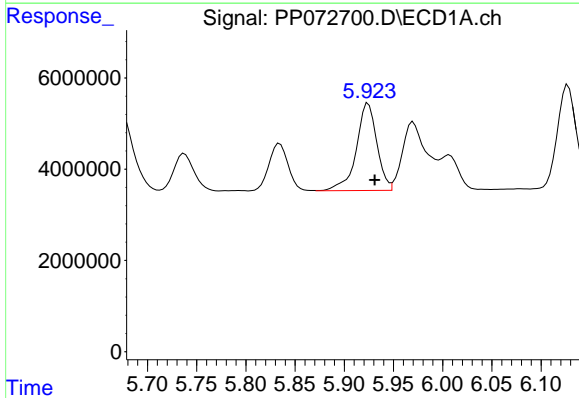
Manual Integrations
 APPROVED

Reviewed By :Yogesh Patel 06/09/2025
 Supervised By :mohammad ahmed 06/10/2025



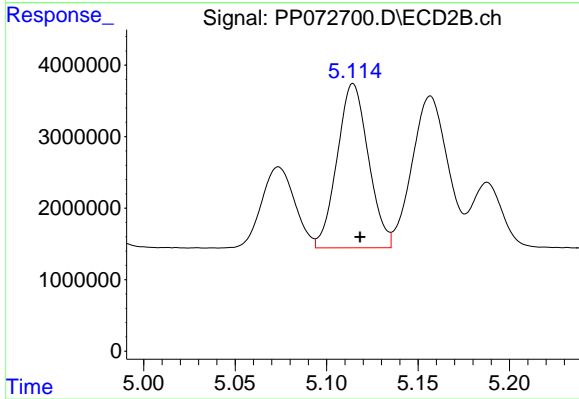
#21 AR-1248-1

R.T.: 4.878 min
 Delta R.T.: -0.003 min
 Response: 20540584
 Conc: 474.14 ng/ml



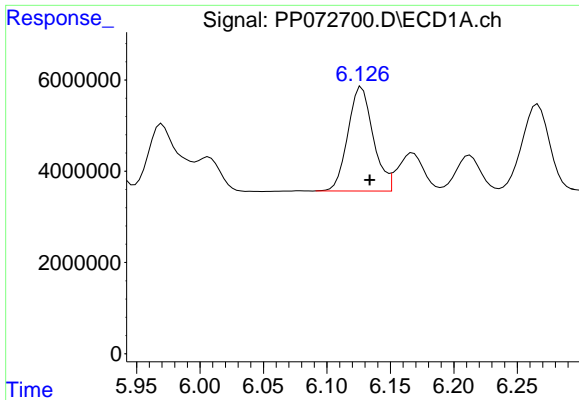
#22 AR-1248-2

R.T.: 5.924 min
 Delta R.T.: -0.007 min
 Response: 27818329
 Conc: 458.75 ng/ml



#22 AR-1248-2

R.T.: 5.114 min
 Delta R.T.: -0.004 min
 Response: 27378100
 Conc: 484.76 ng/ml



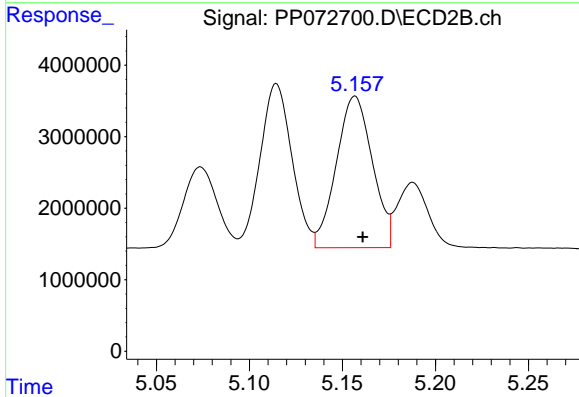
#23 AR-1248-3

R.T.: 6.127 min
 Delta R.T.: -0.006 min
 Response: 31620097
 Conc: 477.79 ng/ml

Instrument :
 ECD_P
 ClientSampleId :
 AR1248CCC500

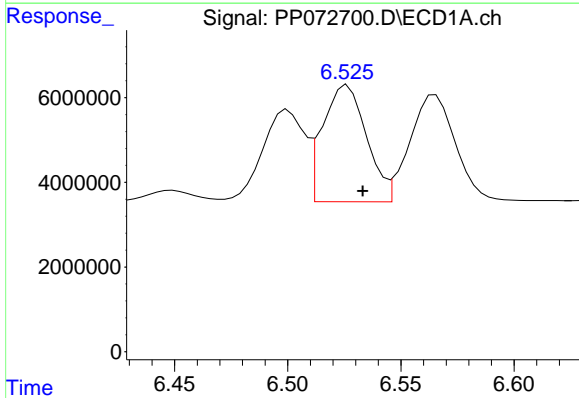
Manual Integrations
 APPROVED

Reviewed By :Yogesh Patel 06/09/2025
 Supervised By :mohammad ahmed 06/10/2025



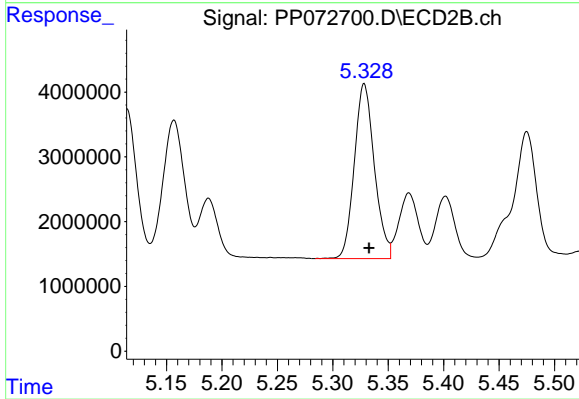
#23 AR-1248-3

R.T.: 5.157 min
 Delta R.T.: -0.004 min
 Response: 28611261
 Conc: 484.06 ng/ml



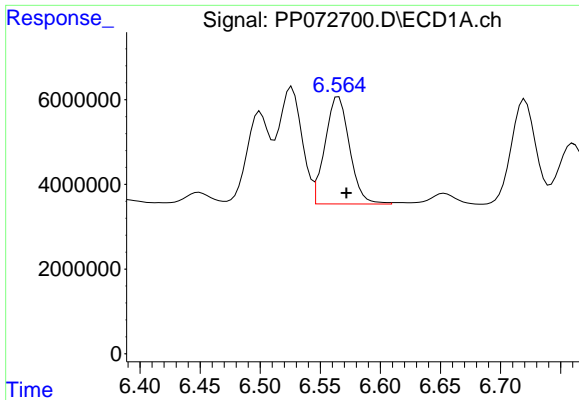
#24 AR-1248-4

R.T.: 6.526 min
 Delta R.T.: -0.007 min
 Response: 37081938
 Conc: 424.32 ng/ml



#24 AR-1248-4

R.T.: 5.328 min
 Delta R.T.: -0.004 min
 Response: 33984049
 Conc: 487.91 ng/ml



#25 AR-1248-5

R.T.: 6.565 min
 Delta R.T.: -0.006 min
 Response: 35884186
 Conc: 432.21 ng/ml

Instrument :

ECD_P

ClientSampleId :

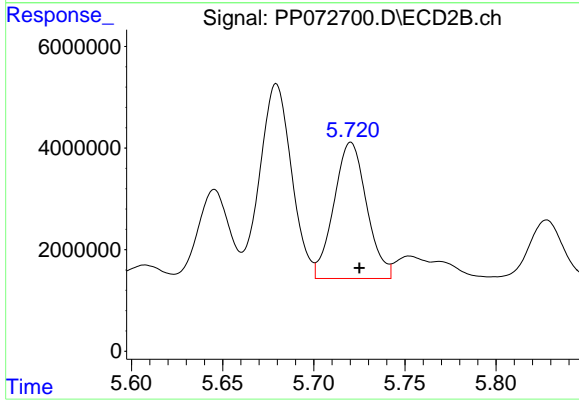
AR1248CCC500

Manual Integrations

APPROVED

Reviewed By :Yogesh Patel 06/09/2025

Supervised By :mohammad ahmed 06/10/2025



#25 AR-1248-5

R.T.: 5.720 min
 Delta R.T.: -0.005 min
 Response: 33622371
 Conc: 482.11 ng/ml