

Data Path : Z:\pestpcbsrv\HPCHEM1\ECD\_P\Data\PP060625\  
 Data File : PP072708.D  
 Signal(s) : Signal #1: ECD1A.ch Signal #2: ECD2B.ch  
 Acq On : 06 Jun 2025 19:46  
 Operator : YP\AJ  
 Sample : PB168325BL  
 Misc :  
 ALS Vial : 22 Sample Multiplier: 1

Instrument :  
 ECD\_P  
 ClientSampleId :  
 PB168325BL

Integration File signal 1: autoint1.e  
 Integration File signal 2: autoint2.e  
 Quant Time: Jun 06 22:46:04 2025  
 Quant Method : Z:\pestpcbsrv\HPCHEM1\ECD\_P\methods\PP051925.M  
 Quant Title : GC EXTRACTABLES  
 QLast Update : Sat May 24 03:32:20 2025  
 Response via : Initial Calibration  
 Integrator: ChemStation

Volume Inj. : 2 µl  
 Signal #1 Phase : ZB-MR1 Signal #2 Phase: ZB-MR2  
 Signal #1 Info : 30Mx0.32mmx 0.50µ Signal #2 Info : 30M x 0.32mm x 0.25µm

Compound	RT#1	RT#2	Resp#1	Resp#2	ng/ml	ng/ml
-----						
System Monitoring Compounds						
1) SA Tetrachlo...	4.503	3.796	40435616	36933542	20.109	23.107
2) SA Decachlor...	10.205	8.811	31287926	24518568	19.205	23.161

Target Compounds

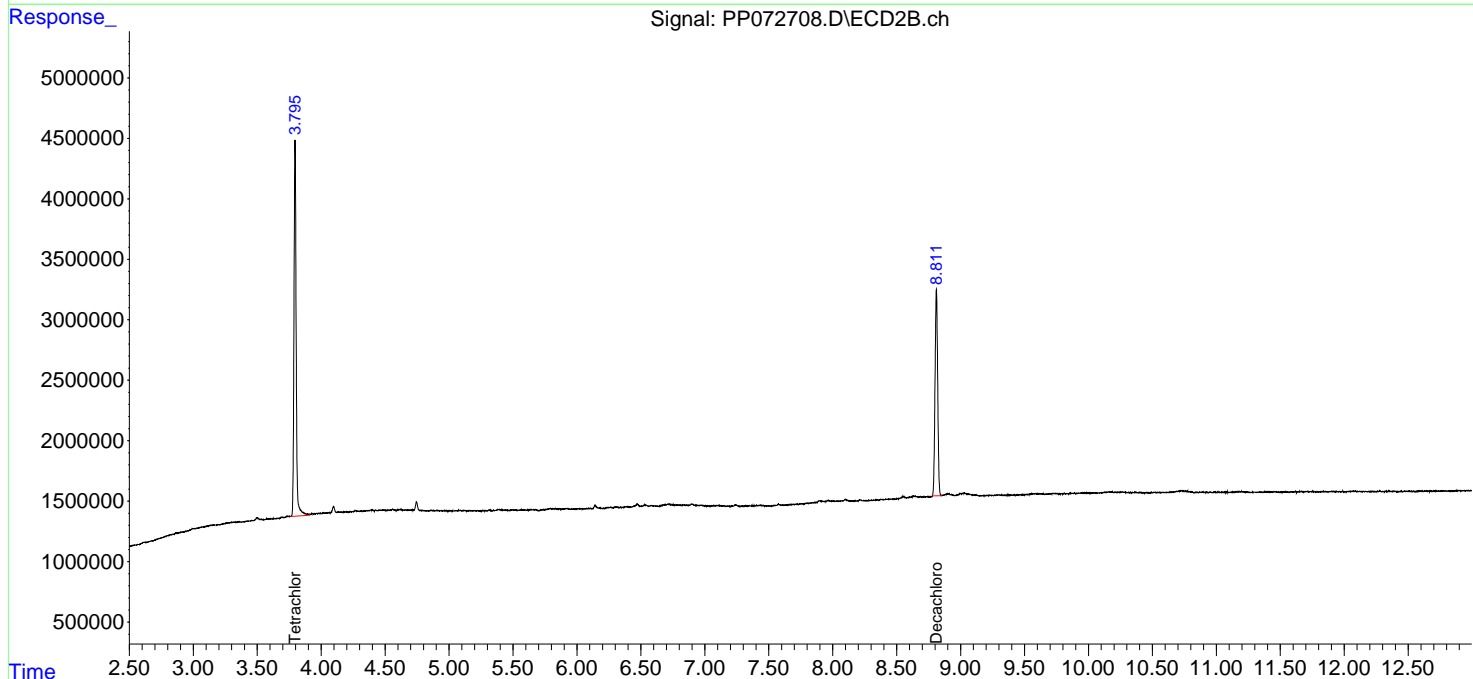
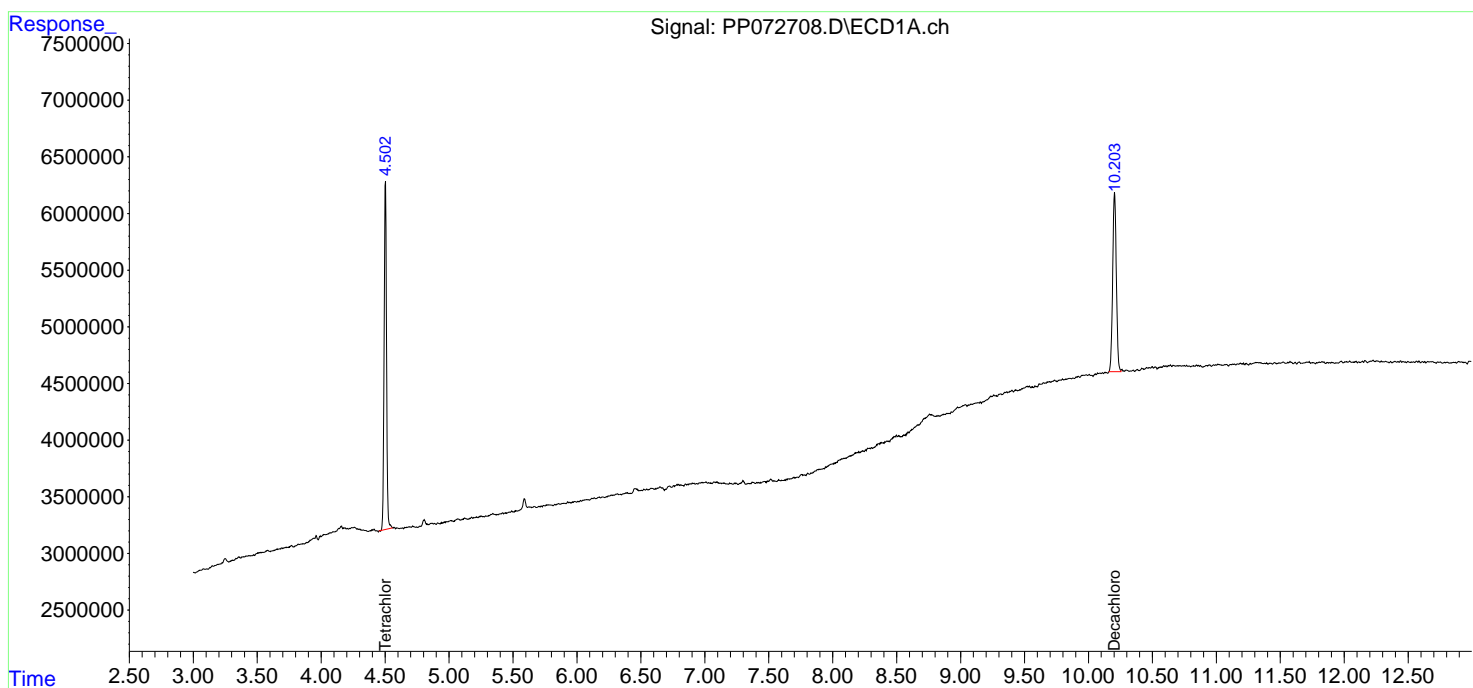
(f)=RT Delta > 1/2 Window (#)=Amounts differ by > 25% (m)=manual int.

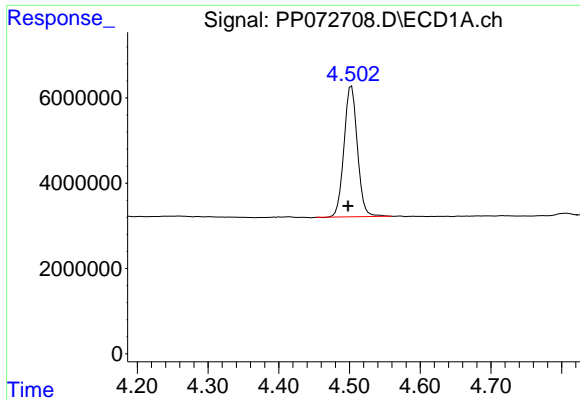
Data Path : Z:\pestpcbsrv\HPCHEM1\ECD\_P\Data\PP060625\  
 Data File : PP072708.D  
 Signal(s) : Signal #1: ECD1A.ch Signal #2: ECD2B.ch  
 Acq On : 06 Jun 2025 19:46  
 Operator : YP\AJ  
 Sample : PB168325BL  
 Misc :  
 ALS Vial : 22 Sample Multiplier: 1

**Instrument :**  
 ECD\_P  
**ClientSampleId :**  
 PB168325BL

Integration File signal 1: autoint1.e  
 Integration File signal 2: autoint2.e  
 Quant Time: Jun 06 22:46:04 2025  
 Quant Method : Z:\pestpcbsrv\HPCHEM1\ECD\_P\methods\PP051925.M  
 Quant Title : GC EXTRACTABLES  
 QLast Update : Sat May 24 03:32:20 2025  
 Response via : Initial Calibration  
 Integrator: ChemStation

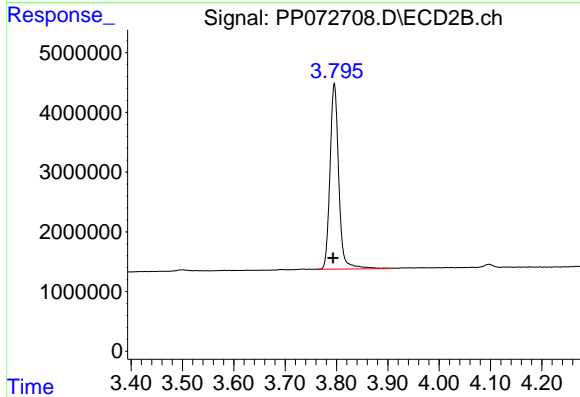
Volume Inj. : 2 µl  
 Signal #1 Phase : ZB-MR1 Signal #2 Phase: ZB-MR2  
 Signal #1 Info : 30Mx0.32mmx 0.50µ Signal #2 Info : 30M x 0.32mm x 0.25µm



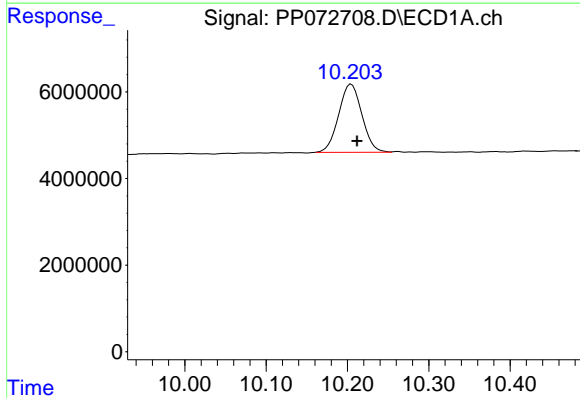


#1 Tetrachloro-m-xylene  
 R.T.: 4.503 min  
 Delta R.T.: 0.005 min  
 Response: 40435616  
 Conc: 20.11 ng/ml

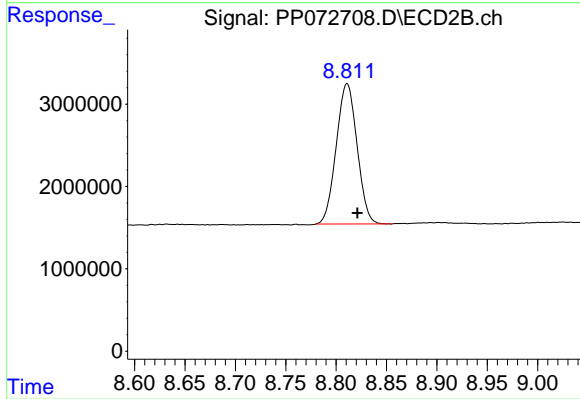
Instrument :  
 ECD\_P  
 ClientSampleId :  
 PB168325BL



#1 Tetrachloro-m-xylene  
 R.T.: 3.796 min  
 Delta R.T.: 0.002 min  
 Response: 36933542  
 Conc: 23.11 ng/ml



#2 Decachlorobiphenyl  
 R.T.: 10.205 min  
 Delta R.T.: -0.007 min  
 Response: 31287926  
 Conc: 19.21 ng/ml



#2 Decachlorobiphenyl  
 R.T.: 8.811 min  
 Delta R.T.: -0.010 min  
 Response: 24518568  
 Conc: 23.16 ng/ml