

Data Path : Z:\pestpcbsrv\HPCHEM1\ECD_P\Data\PP060625\
 Data File : PP072713.D
 Signal(s) : Signal #1: ECD1A.ch Signal #2: ECD2B.ch
 Acq On : 06 Jun 2025 21:40
 Operator : YP\AJ
 Sample : AR1660CCC500
 Misc :
 ALS Vial : 3 Sample Multiplier: 1

Instrument :
 ECD_P
ClientSampleId :
 AR1660CCC500

Manual Integrations
APPROVED

Reviewed By :Yogesh Patel 06/09/2025
 Supervised By :mohammad ahmed 06/10/2025

Integration File signal 1: autoint1.e
 Integration File signal 2: autoint2.e
 Quant Time: Jun 06 22:47:32 2025
 Quant Method : Z:\pestpcbsrv\HPCHEM1\ECD_P\methods\PP051925.M
 Quant Title : GC EXTRACTABLES
 QLast Update : Sat May 24 03:32:20 2025
 Response via : Initial Calibration
 Integrator: ChemStation

Volume Inj. : 2 µl
 Signal #1 Phase : ZB-MR2 Signal #2 Phase: ZB-MR2
 Signal #1 Info : 30Mx0.32mmx 0.50µ Signal #2 Info : 30M x 0.32mm x 0.25µm

Compound	RT#1	RT#2	Resp#1	Resp#2	ng/ml	ng/ml

System Monitoring Compounds						
1) SA Tetrachlo...	4.503	3.796	95499482	86417367	47.493	54.066
2) SA Decachlor...	10.203	8.810	75133065	57443521	46.119	54.264m
Target Compounds						
3) L1 AR-1016-1	5.655	4.877	31806955	31489675	423.620	512.615
4) L1 AR-1016-2	5.676	4.895	49350010	46270276	461.251	527.060
5) L1 AR-1016-3	5.738	5.071	30255703	25286971	461.462	530.631
6) L1 AR-1016-4	5.835	5.113	25454862	20276182	477.846	532.948
7) L1 AR-1016-5	6.128	5.327	23042642	28080692	471.131	563.593
31) L7 AR-1260-1	7.245	6.358	43521032	42000346	464.994	526.626
32) L7 AR-1260-2	7.499	6.547	64965037	50897823	452.750	501.841
33) L7 AR-1260-3	7.857	6.699	51060605	47302694	448.408	544.320m
34) L7 AR-1260-4	8.081	7.169	47146538	39189241	439.379	543.608
35) L7 AR-1260-5	8.399	7.412	106.7E6	93011519	450.862	535.707

(f)=RT Delta > 1/2 Window (#)=Amounts differ by > 25% (m)=manual int.

Data Path : Z:\pestpcbsrv\HPCHEM1\ECD_P\Data\PP060625\
 Data File : PP072713.D
 Signal(s) : Signal #1: ECD1A.ch Signal #2: ECD2B.ch
 Acq On : 06 Jun 2025 21:40
 Operator : YP\AJ
 Sample : AR1660CCC500
 Misc :
 ALS Vial : 3 Sample Multiplier: 1

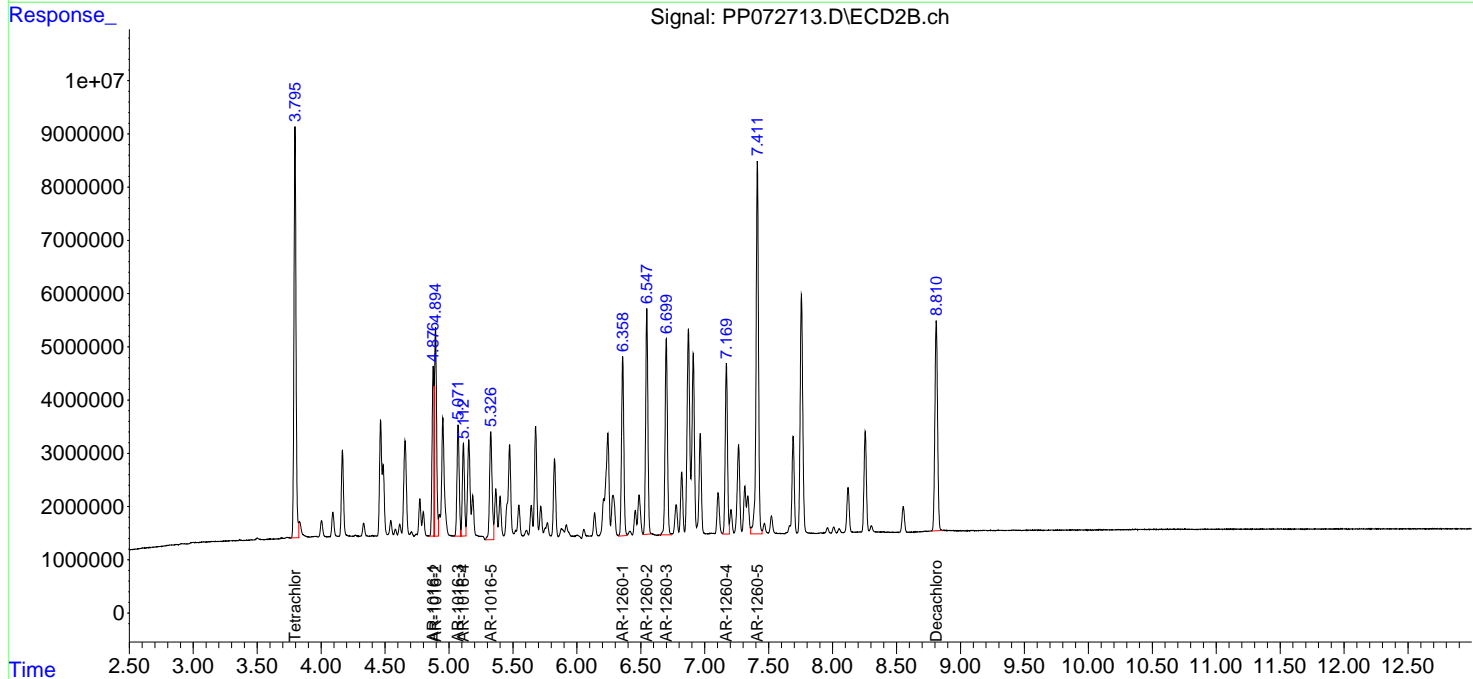
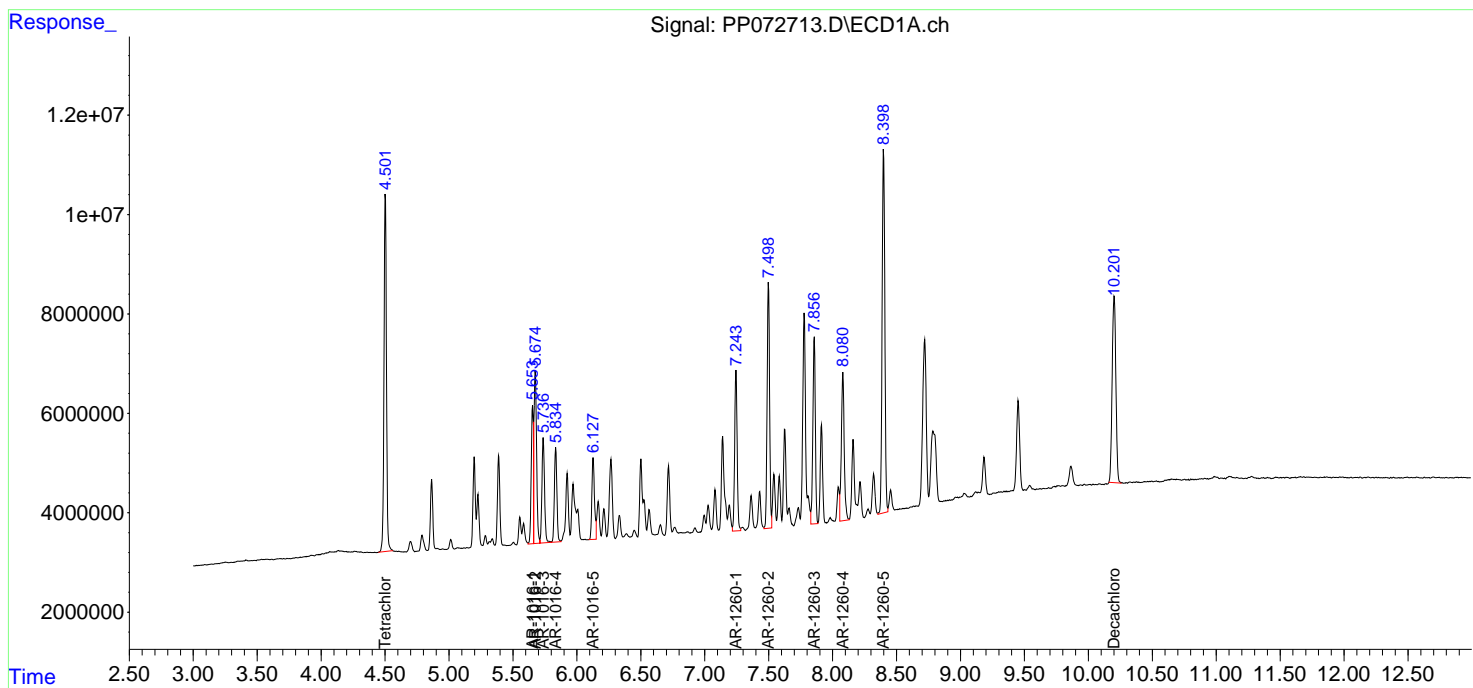
Instrument :
 ECD_P
 ClientSampleId :
 AR1660CCC500

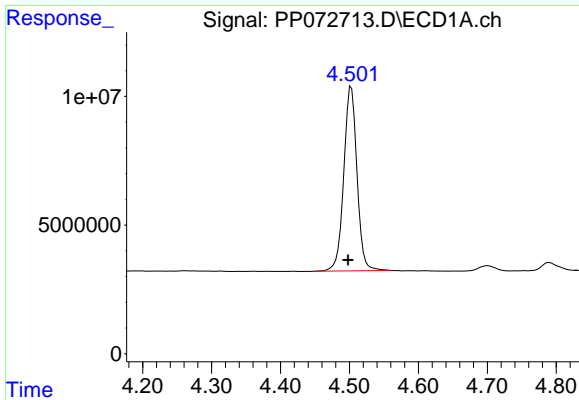
Manual Integrations
 APPROVED

Reviewed By :Yogesh Patel 06/09/2025
 Supervised By :mohammad ahmed 06/10/2025

Integration File signal 1: autoint1.e
 Integration File signal 2: autoint2.e
 Quant Time: Jun 06 22:47:32 2025
 Quant Method : Z:\pestpcbsrv\HPCHEM1\ECD_P\methods\PP051925.M
 Quant Title : GC EXTRACTABLES
 QLast Update : Sat May 24 03:32:20 2025
 Response via : Initial Calibration
 Integrator: ChemStation

Volume Inj. : 2 µl
 Signal #1 Phase : ZB-MR1 Signal #2 Phase: ZB-MR2
 Signal #1 Info : 30Mx0.32mmx 0.50µ Signal #2 Info : 30M x 0.32mm x 0.25µm

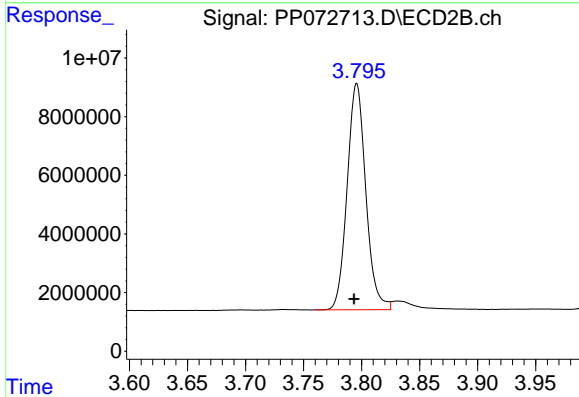




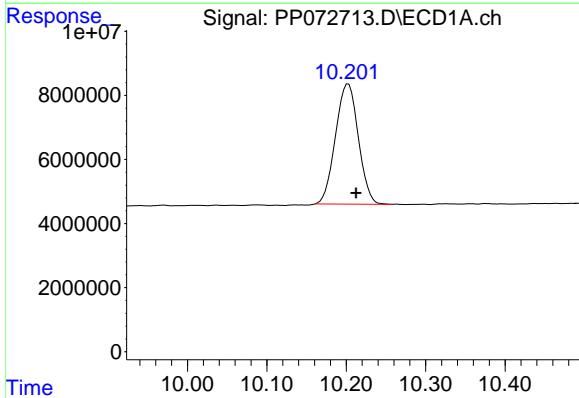
#1 Tetrachloro-m-xylene
 R.T.: 4.503 min
 Delta R.T.: 0.005 min
 Response: 95499482
 Conc: 47.49 ng/ml

Instrument : ECD_P
 ClientSampleId : AR1660CCC500

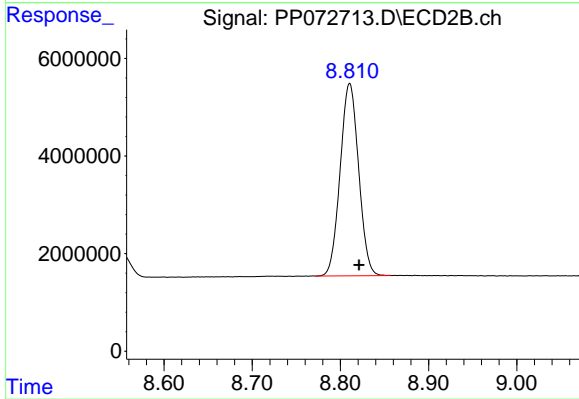
Manual Integrations
APPROVED
 Reviewed By :Yogesh Patel 06/09/2025
 Supervised By :mohammad ahmed 06/10/2025



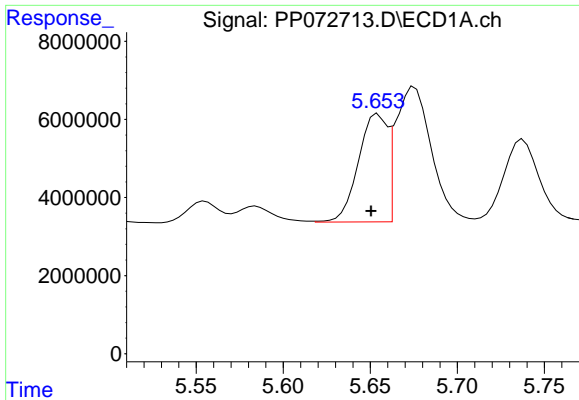
#1 Tetrachloro-m-xylene
 R.T.: 3.796 min
 Delta R.T.: 0.002 min
 Response: 86417367
 Conc: 54.07 ng/ml



#2 Decachlorobiphenyl
 R.T.: 10.203 min
 Delta R.T.: -0.009 min
 Response: 75133065
 Conc: 46.12 ng/ml



#2 Decachlorobiphenyl
 R.T.: 8.810 min
 Delta R.T.: -0.011 min
 Response: 57443521
 Conc: 54.26 ng/ml m



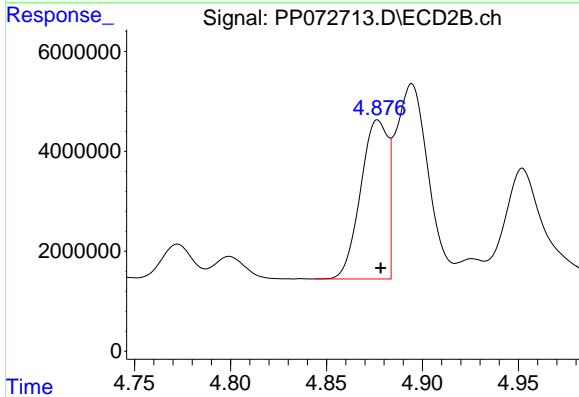
#3 AR-1016-1

R.T.: 5.655 min
 Delta R.T.: 0.004 min
 Response: 31806955
 Conc: 423.62 ng/ml

Instrument :
 ECD_P
 ClientSampleId :
 AR1660CCC500

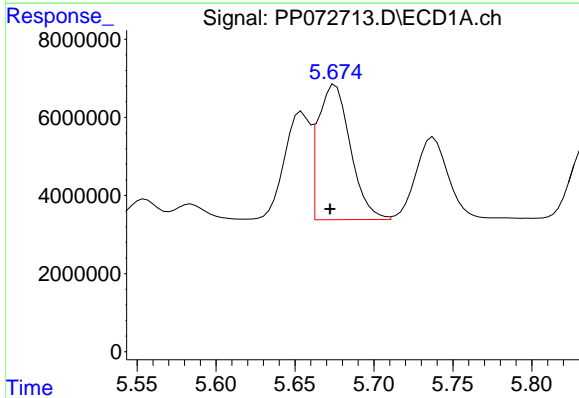
Manual Integrations
 APPROVED

Reviewed By :Yogesh Patel 06/09/2025
 Supervised By :mohammad ahmed 06/10/2025



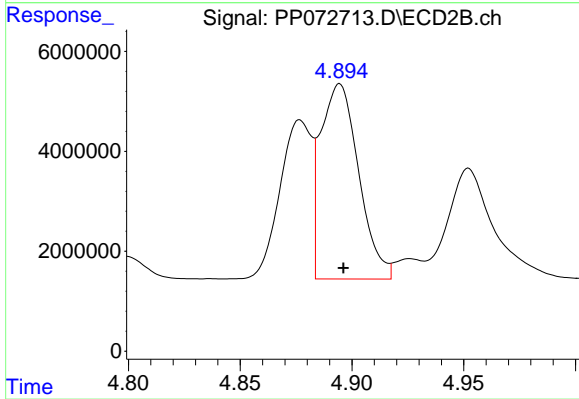
#3 AR-1016-1

R.T.: 4.877 min
 Delta R.T.: -0.001 min
 Response: 31489675
 Conc: 512.61 ng/ml



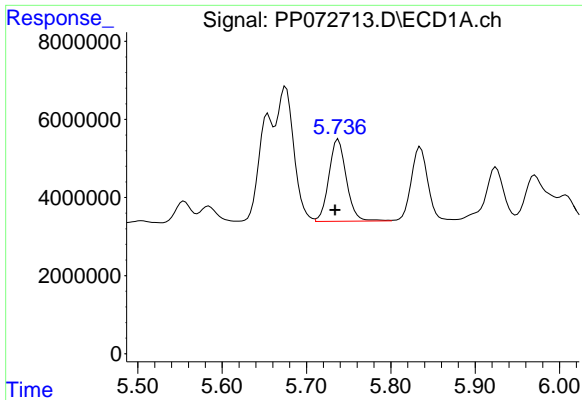
#4 AR-1016-2

R.T.: 5.676 min
 Delta R.T.: 0.003 min
 Response: 49350010
 Conc: 461.25 ng/ml



#4 AR-1016-2

R.T.: 4.895 min
 Delta R.T.: -0.002 min
 Response: 46270276
 Conc: 527.06 ng/ml



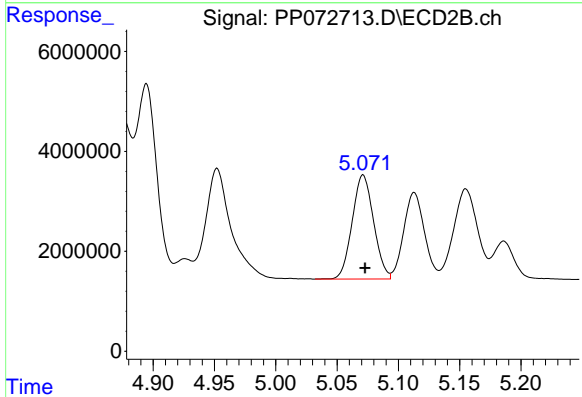
#5 AR-1016-3

R.T.: 5.738 min
 Delta R.T.: 0.004 min
 Response: 30255703
 Conc: 461.46 ng/ml

Instrument : ECD_P
 ClientSampleId : AR1660CCC500

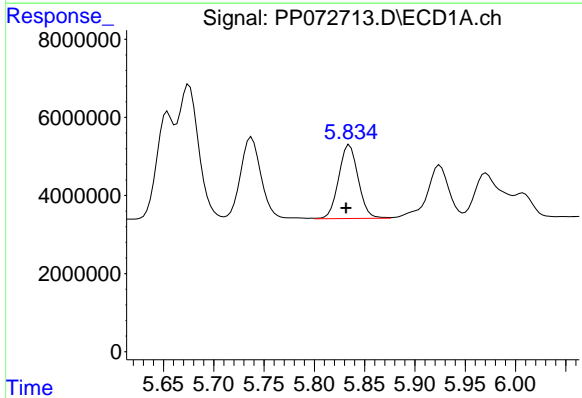
Manual Integrations
 APPROVED

Reviewed By :Yogesh Patel 06/09/2025
 Supervised By :mohammad ahmed 06/10/2025



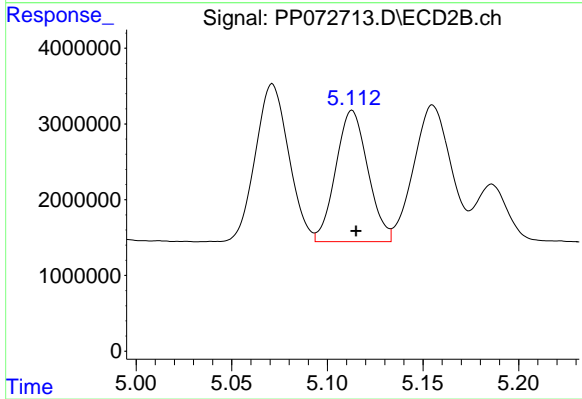
#5 AR-1016-3

R.T.: 5.071 min
 Delta R.T.: -0.002 min
 Response: 25286971
 Conc: 530.63 ng/ml



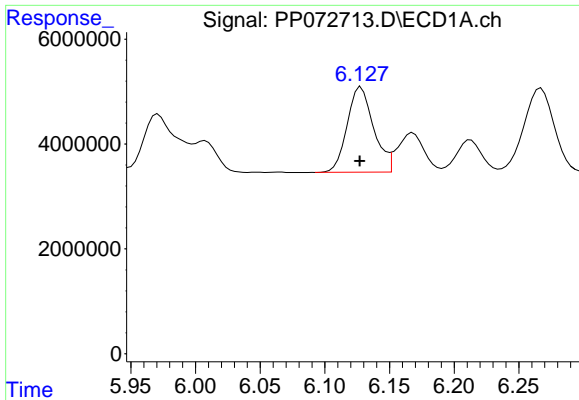
#6 AR-1016-4

R.T.: 5.835 min
 Delta R.T.: 0.004 min
 Response: 25454862
 Conc: 477.85 ng/ml



#6 AR-1016-4

R.T.: 5.113 min
 Delta R.T.: -0.002 min
 Response: 20276182
 Conc: 532.95 ng/ml



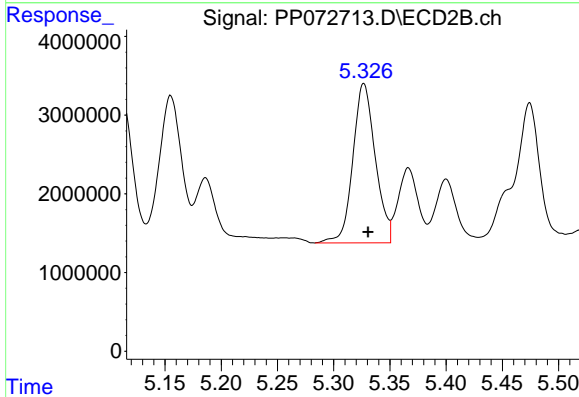
#7 AR-1016-5

R.T.: 6.128 min
 Delta R.T.: 0.001 min
 Response: 23042642
 Conc: 471.13 ng/ml

Instrument :
 ECD_P
 ClientSampleId :
 AR1660CCC500

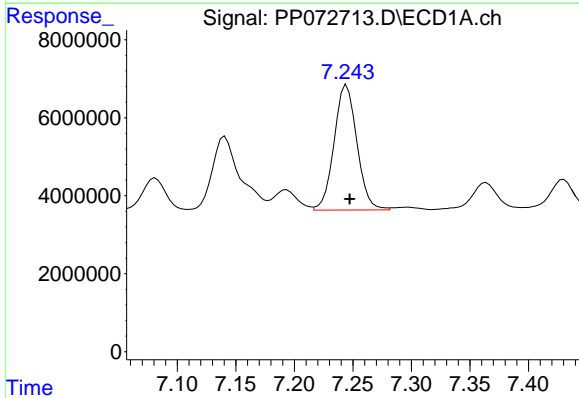
Manual Integrations
 APPROVED

Reviewed By :Yogesh Patel 06/09/2025
 Supervised By :mohammad ahmed 06/10/2025



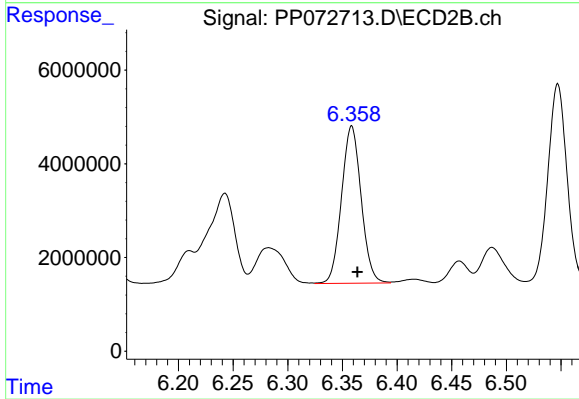
#7 AR-1016-5

R.T.: 5.327 min
 Delta R.T.: -0.004 min
 Response: 28080692
 Conc: 563.59 ng/ml



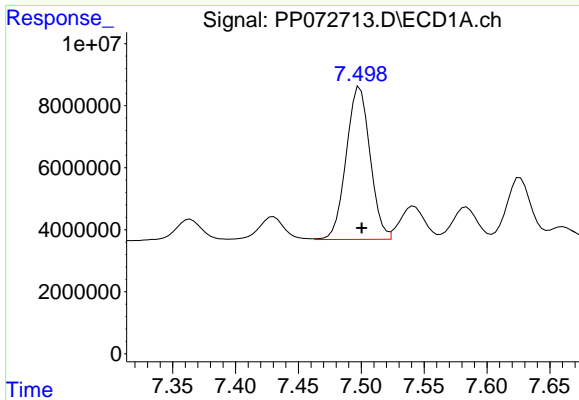
#31 AR-1260-1

R.T.: 7.245 min
 Delta R.T.: -0.002 min
 Response: 43521032
 Conc: 464.99 ng/ml



#31 AR-1260-1

R.T.: 6.358 min
 Delta R.T.: -0.005 min
 Response: 42000346
 Conc: 526.63 ng/ml



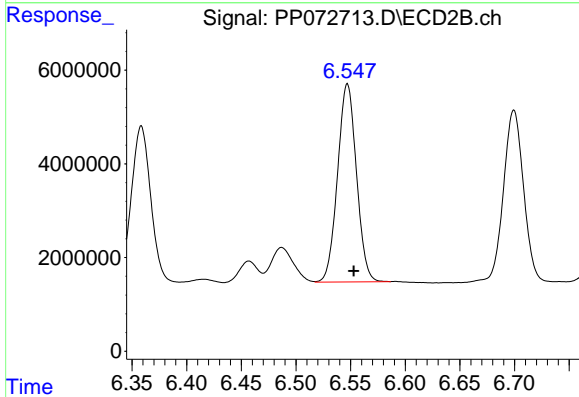
#32 AR-1260-2

R.T.: 7.499 min
 Delta R.T.: -0.002 min
 Response: 64965037
 Conc: 452.75 ng/ml

Instrument :
 ECD_P
 ClientSampleId :
 AR1660CCC500

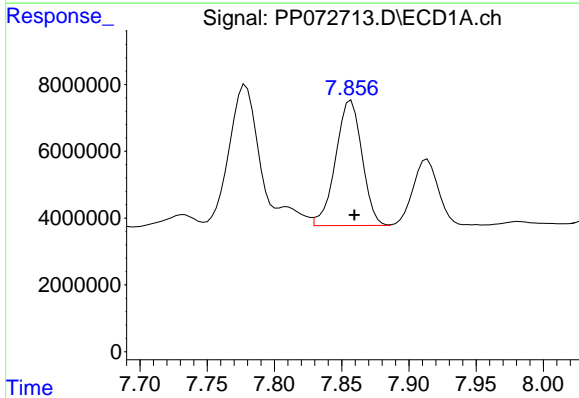
Manual Integrations
 APPROVED

Reviewed By :Yogesh Patel 06/09/2025
 Supervised By :mohammad ahmed 06/10/2025



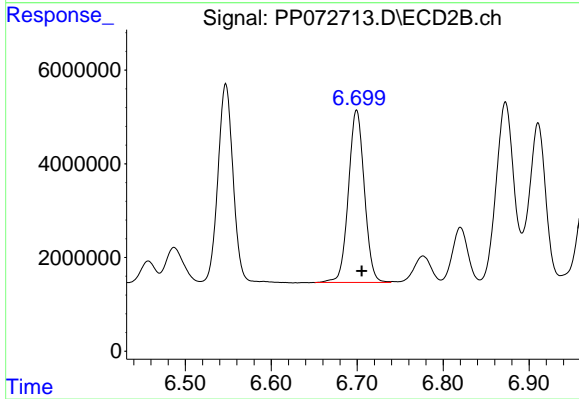
#32 AR-1260-2

R.T.: 6.547 min
 Delta R.T.: -0.006 min
 Response: 50897823
 Conc: 501.84 ng/ml



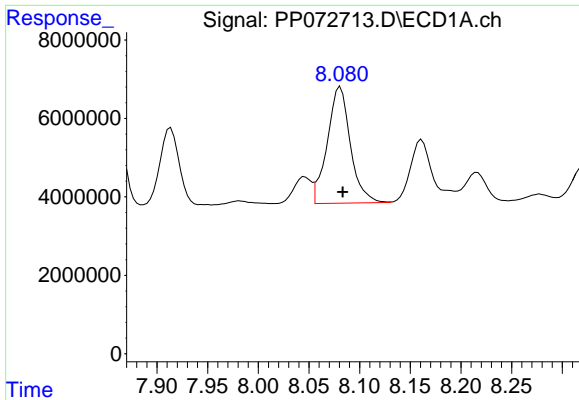
#33 AR-1260-3

R.T.: 7.857 min
 Delta R.T.: -0.002 min
 Response: 51060605
 Conc: 448.41 ng/ml



#33 AR-1260-3

R.T.: 6.699 min
 Delta R.T.: -0.006 min
 Response: 47302694
 Conc: 544.32 ng/ml m



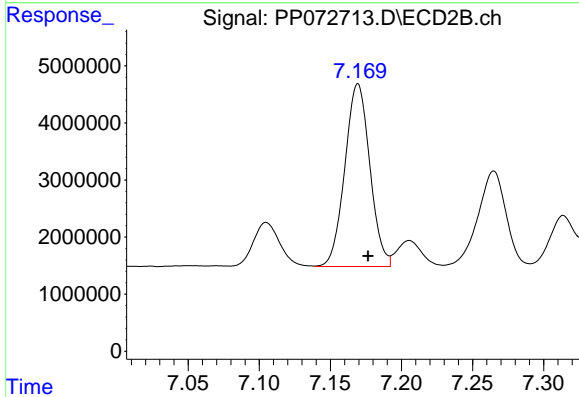
#34 AR-1260-4

R.T.: 8.081 min
 Delta R.T.: -0.002 min
 Response: 47146538
 Conc: 439.38 ng/ml

Instrument :
 ECD_P
 ClientSampleId :
 AR1660CCC500

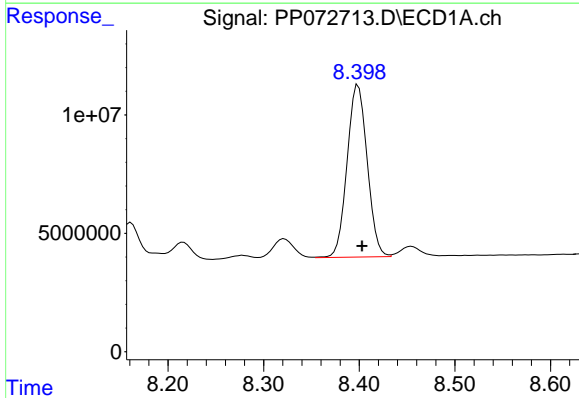
Manual Integrations
 APPROVED

Reviewed By :Yogesh Patel 06/09/2025
 Supervised By :mohammad ahmed 06/10/2025



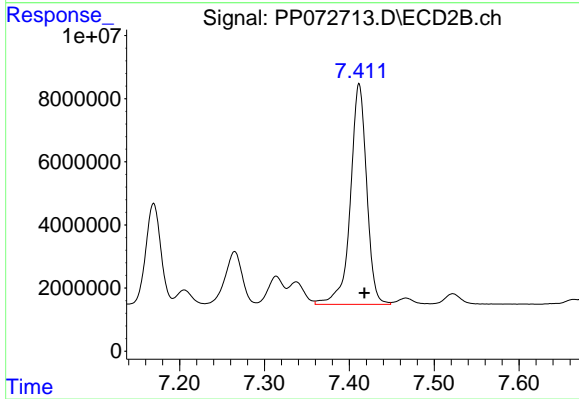
#34 AR-1260-4

R.T.: 7.169 min
 Delta R.T.: -0.007 min
 Response: 39189241
 Conc: 543.61 ng/ml



#35 AR-1260-5

R.T.: 8.399 min
 Delta R.T.: -0.004 min
 Response: 106701998
 Conc: 450.86 ng/ml



#35 AR-1260-5

R.T.: 7.412 min
 Delta R.T.: -0.006 min
 Response: 93011519
 Conc: 535.71 ng/ml