

Data Path : Z:\pestpcbsrv\HPCHEM1\ECD_P\Data\PP060625\
 Data File : PP072716.D
 Signal(s) : Signal #1: ECD1A.ch Signal #2: ECD2B.ch
 Acq On : 06 Jun 2025 23:03
 Operator : YP\AJ
 Sample : AR1254CCC500
 Misc :
 ALS Vial : 6 Sample Multiplier: 1

Instrument :
 ECD_P
ClientSampleId :
 AR1254CCC500

Manual Integrations
APPROVED
 Reviewed By :Yogesh Patel 06/09/2025
 Supervised By :mohammad ahmed 06/10/2025

Integration File signal 1: autoint1.e
 Integration File signal 2: autoint2.e
 Quant Time: Jun 06 23:47:32 2025
 Quant Method : Z:\pestpcbsrv\HPCHEM1\ECD_P\methods\PP051925.M
 Quant Title : GC EXTRACTABLES
 QLast Update : Sat May 24 03:32:20 2025
 Response via : Initial Calibration
 Integrator: ChemStation

Volume Inj. : 2 µl
 Signal #1 Phase : ZB-MR2 Signal #2 Phase: ZB-MR2
 Signal #1 Info : 30Mx0.32mmx 0.50µ Signal #2 Info : 30M x 0.32mm x 0.25µm

Compound	RT#1	RT#2	Resp#1	Resp#2	ng/ml	ng/ml

System Monitoring Compounds						
1) SA Tetrachlo...	4.501	3.795	92251160	85393492	45.878	53.426
2) SA Decachlor...	10.199	8.810	75708861	57236685	46.472m	54.068m
Target Compounds						
26) L6 AR-1254-1	6.501	5.678	37887093	51535391	440.531	515.590
27) L6 AR-1254-2	6.716	5.826	57506140	43888920	440.062	508.521
28) L6 AR-1254-3	7.080	6.229	60440260	66840905	457.870	519.675
29) L6 AR-1254-4	7.361	6.457	55255661	43303521	423.380	507.683
30) L6 AR-1254-5	7.778	6.874	50995496	59878048	458.400	528.251

(f)=RT Delta > 1/2 Window (#)=Amounts differ by > 25% (m)=manual int.

Data Path : Z:\pestpcbsrv\HPCHEM1\ECD_P\Data\PP060625\
 Data File : PP072716.D
 Signal(s) : Signal #1: ECD1A.ch Signal #2: ECD2B.ch
 Acq On : 06 Jun 2025 23:03
 Operator : YP\AJ
 Sample : AR1254CCC500
 Misc :
 ALS Vial : 6 Sample Multiplier: 1

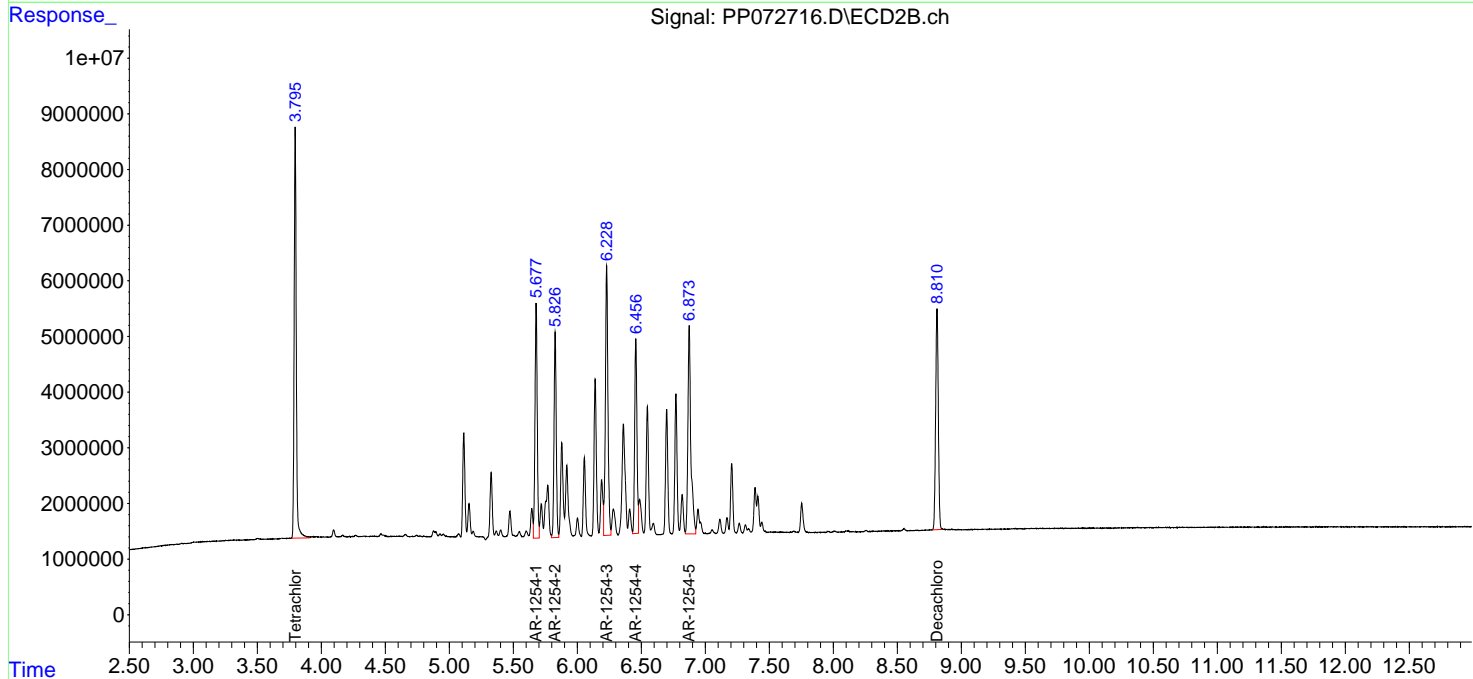
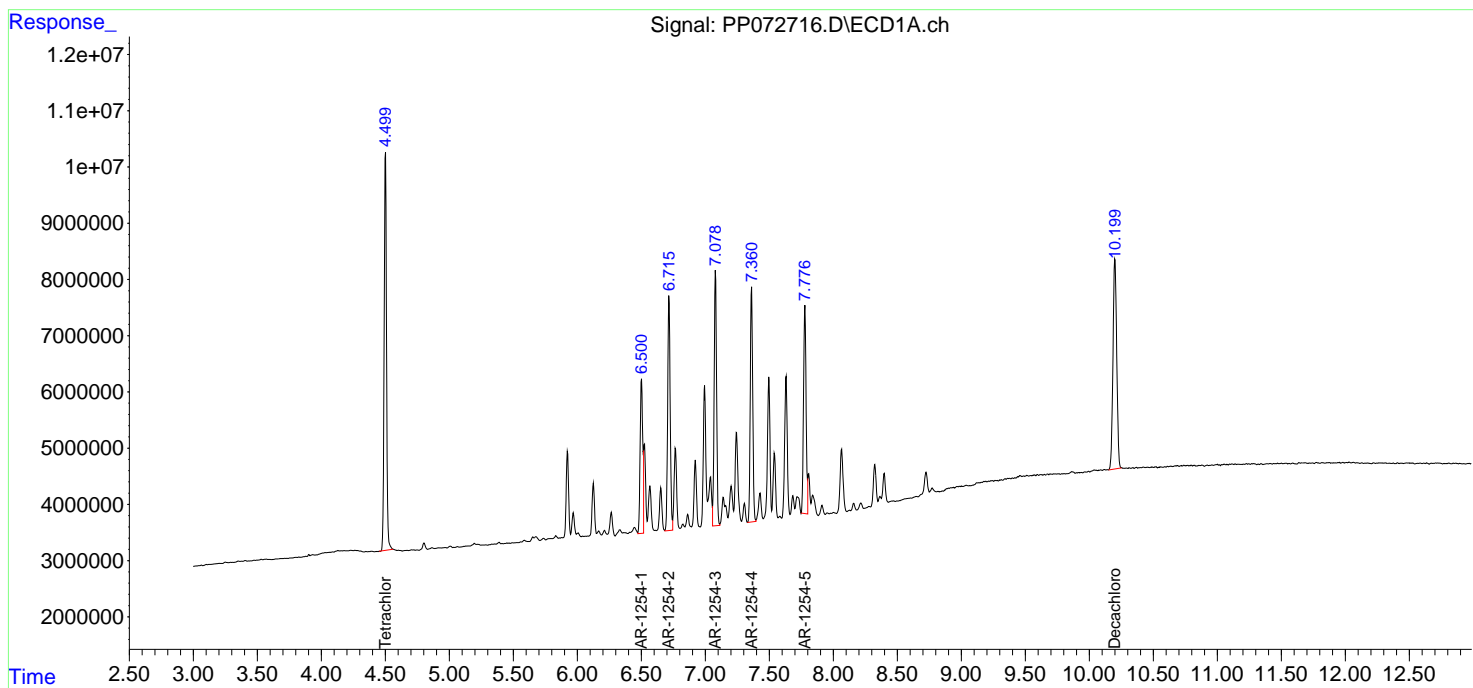
Instrument :
 ECD_P
 ClientSampleId :
 AR1254CCC500

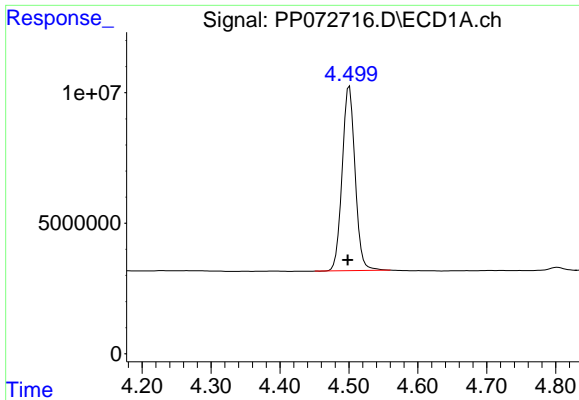
Manual Integrations
 APPROVED

Reviewed By :Yogesh Patel 06/09/2025
 Supervised By :mohammad ahmed 06/10/2025

Integration File signal 1: autoint1.e
 Integration File signal 2: autoint2.e
 Quant Time: Jun 06 23:47:32 2025
 Quant Method : Z:\pestpcbsrv\HPCHEM1\ECD_P\methods\PP051925.M
 Quant Title : GC EXTRACTABLES
 QLast Update : Sat May 24 03:32:20 2025
 Response via : Initial Calibration
 Integrator: ChemStation

Volume Inj. : 2 µl
 Signal #1 Phase : ZB-MR1 Signal #2 Phase: ZB-MR2
 Signal #1 Info : 30Mx0.32mmx 0.50µ Signal #2 Info : 30M x 0.32mm x 0.25µm

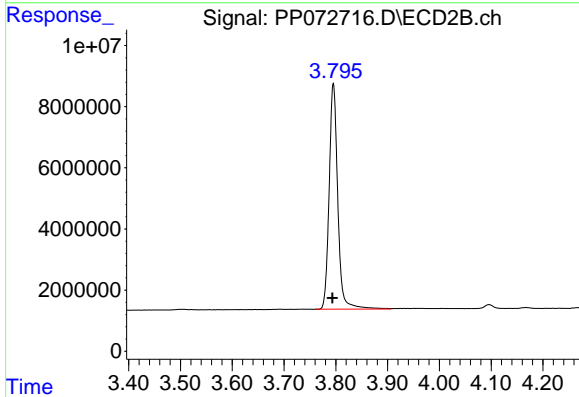




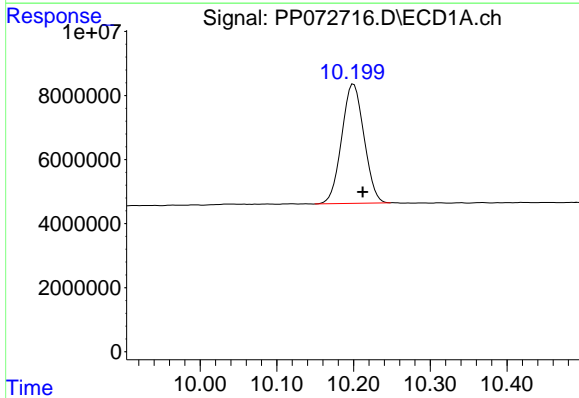
#1 Tetrachloro-m-xylene
 R.T.: 4.501 min
 Delta R.T.: 0.003 min
 Response: 92251160
 Conc: 45.88 ng/ml

Instrument : ECD_P
 ClientSampleId : AR1254CCC500

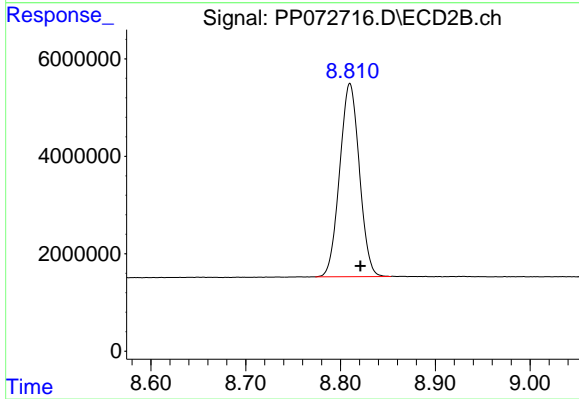
Manual Integrations
APPROVED
 Reviewed By :Yogesh Patel 06/09/2025
 Supervised By :mohammad ahmed 06/10/2025



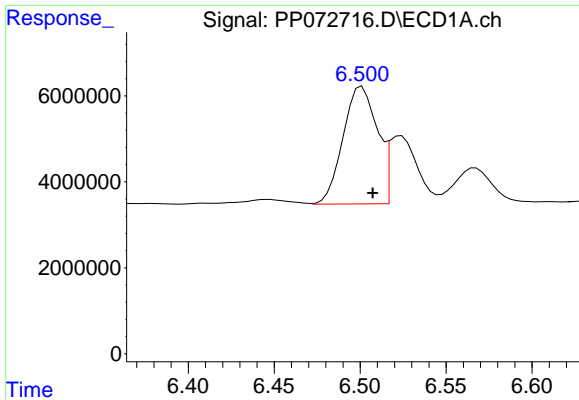
#1 Tetrachloro-m-xylene
 R.T.: 3.795 min
 Delta R.T.: 0.002 min
 Response: 85393492
 Conc: 53.43 ng/ml



#2 Decachlorobiphenyl
 R.T.: 10.199 min
 Delta R.T.: -0.013 min
 Response: 75708861
 Conc: 46.47 ng/ml m



#2 Decachlorobiphenyl
 R.T.: 8.810 min
 Delta R.T.: -0.012 min
 Response: 57236685
 Conc: 54.07 ng/ml m



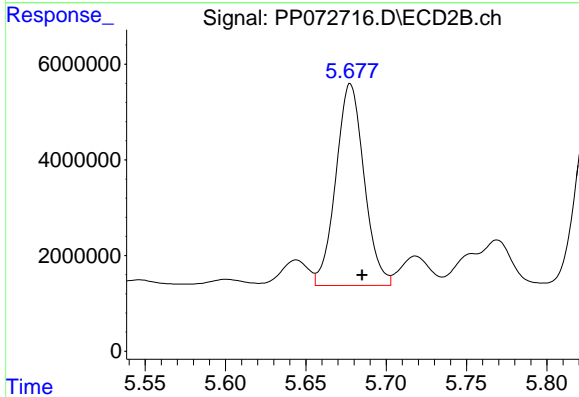
#26 AR-1254-1

R.T.: 6.501 min
 Delta R.T.: -0.006 min
 Response: 37887093
 Conc: 440.53 ng/ml

Instrument :
 ECD_P
 ClientSampleId :
 AR1254CCC500

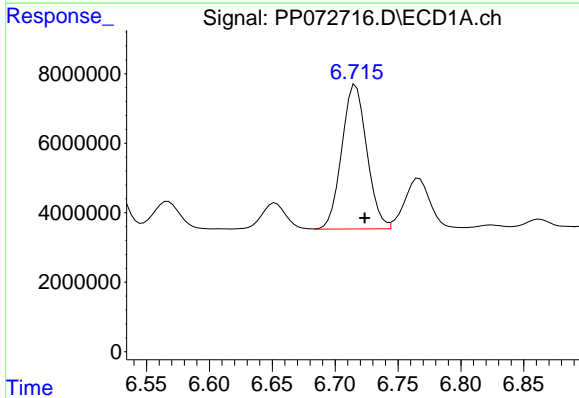
Manual Integrations
 APPROVED

Reviewed By :Yogesh Patel 06/09/2025
 Supervised By :mohammad ahmed 06/10/2025



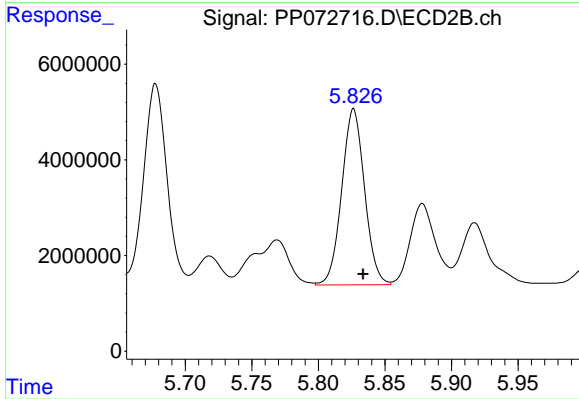
#26 AR-1254-1

R.T.: 5.678 min
 Delta R.T.: -0.007 min
 Response: 51535391
 Conc: 515.59 ng/ml



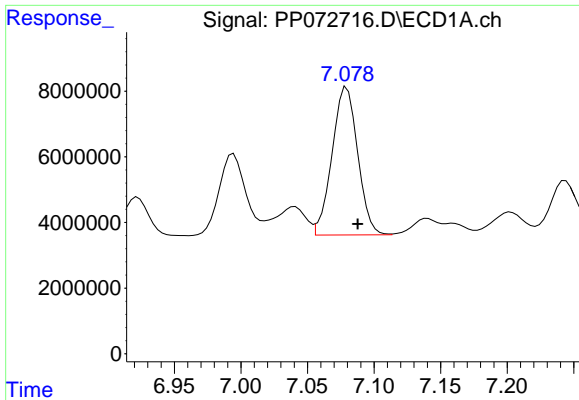
#27 AR-1254-2

R.T.: 6.716 min
 Delta R.T.: -0.007 min
 Response: 57506140
 Conc: 440.06 ng/ml



#27 AR-1254-2

R.T.: 5.826 min
 Delta R.T.: -0.007 min
 Response: 43888920
 Conc: 508.52 ng/ml



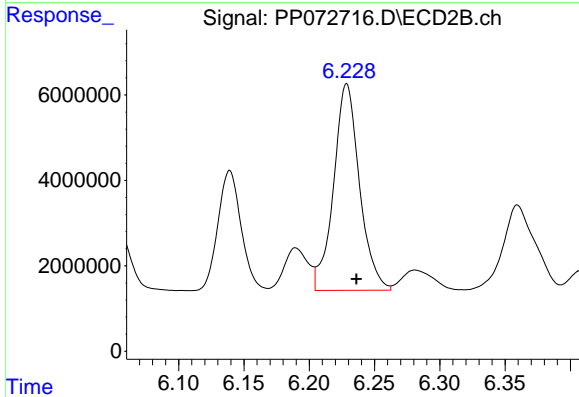
#28 AR-1254-3

R.T.: 7.080 min
 Delta R.T.: -0.008 min
 Response: 60440260
 Conc: 457.87 ng/ml

Instrument :
 ECD_P
 ClientSampleId :
 AR1254CCC500

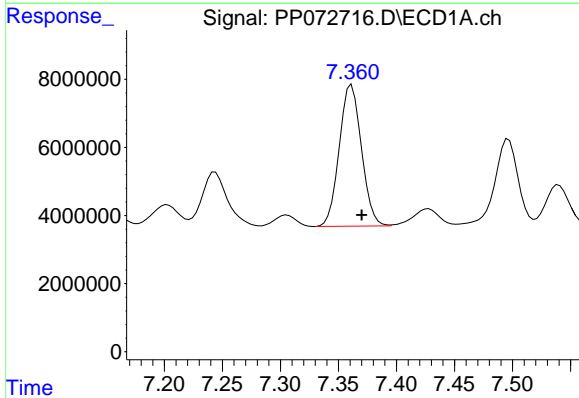
Manual Integrations
 APPROVED

Reviewed By :Yogesh Patel 06/09/2025
 Supervised By :mohammad ahmed 06/10/2025



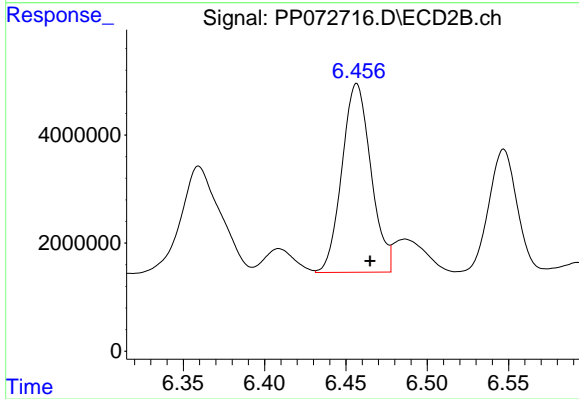
#28 AR-1254-3

R.T.: 6.229 min
 Delta R.T.: -0.008 min
 Response: 66840905
 Conc: 519.67 ng/ml



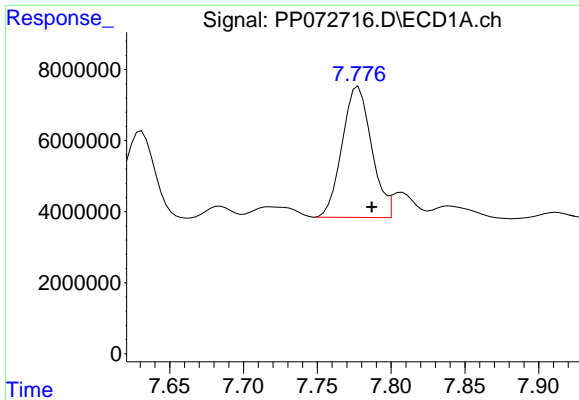
#29 AR-1254-4

R.T.: 7.361 min
 Delta R.T.: -0.009 min
 Response: 55255661
 Conc: 423.38 ng/ml



#29 AR-1254-4

R.T.: 6.457 min
 Delta R.T.: -0.008 min
 Response: 43303521
 Conc: 507.68 ng/ml



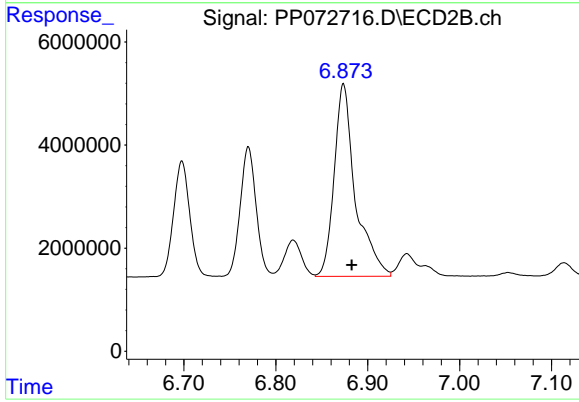
#30 AR-1254-5

R.T.: 7.778 min
 Delta R.T.: -0.009 min
 Response: 50995496
 Conc: 458.40 ng/ml

Instrument :
 ECD_P
 ClientSampleId :
 AR1254CCC500

Manual Integrations
 APPROVED

Reviewed By :Yogesh Patel 06/09/2025
 Supervised By :mohammad ahmed 06/10/2025



#30 AR-1254-5

R.T.: 6.874 min
 Delta R.T.: -0.009 min
 Response: 59878048
 Conc: 528.25 ng/ml