

Data Path : Z:\pestpcbsrv\HPCHEM1\ECD_P\Data\PP060721\
 Data File : PP036255.D
 Signal(s) : Signal #1: ECD1A.CH Signal #2: ECD2B.CH
 Acq On : 07 Jun 2021 14:17
 Operator : DD\AJ
 Sample : M2603-13
 Misc :
 ALS Vial : 17 Sample Multiplier: 1

Instrument :
 ECD_P
 ClientSampleId :
 FAM4-WC4

Manual Integrations
 APPROVED

Ankita
 6/8/2021 3:22:18 PM

Integration File signal 1: autoint1.e
 Integration File signal 2: autoint2.e
 Quant Time: Jun 07 15:17:39 2021
 Quant Method : Z:\pestpcbsrv\HPCHEM1\ECD_P\methods\PP052521.M
 Quant Title : GC EXTRACTABLES
 QLast Update : Wed May 26 00:48:29 2021
 Response via : Initial Calibration
 Integrator: ChemStation 6890 Scale Mode: Small noise peaks clipped

Volume Inj. : 2 µl
 Signal #1 Phase : ZB-MR1 Signal #2 Phase: ZB-MR2
 Signal #1 Info : 30Mx0.32mmx 0.50µ Signal #2 Info : 30M x 0.32mm x 0.25µm

Compound	RT#1	RT#2	Resp#1	Resp#2	ng/ml	ng/ml

System Monitoring Compounds						
1) SA Tetrachlo...	4.967	3.963	882657	598933	19.831	21.460
2) SA Decachlor...	10.998	9.268	804742	445291	18.830	19.410
Target Compounds						
26) L6 AR-1254-1	7.195	6.089	78316	71949	48.340	55.058
27) L6 AR-1254-2	7.426	6.249	139485	49371	56.623m	42.821m
28) L6 AR-1254-3	7.807	6.669	261874	164453	99.268	86.372m
29) L6 AR-1254-4	8.101	6.909	127902	30038	63.366	25.157 #
30) L6 AR-1254-5	8.529	7.340	219517	195708	96.743	114.712
31) L7 AR-1260-1	7.972	6.807	144207	69339	71.188	55.574m
32) L7 AR-1260-2	8.236	7.006	173247	74945	70.917	49.732 #
33) L7 AR-1260-3	8.603	7.158	163660	83254	88.129	59.237 #
34) L7 AR-1260-4	8.831	7.644	201375	64494	90.179	55.165 #
35) L7 AR-1260-5	9.161	7.892	223017	159634	52.232	57.668

(f)=RT Delta > 1/2 Window (#)=Amounts differ by > 25% (m)=manual int.

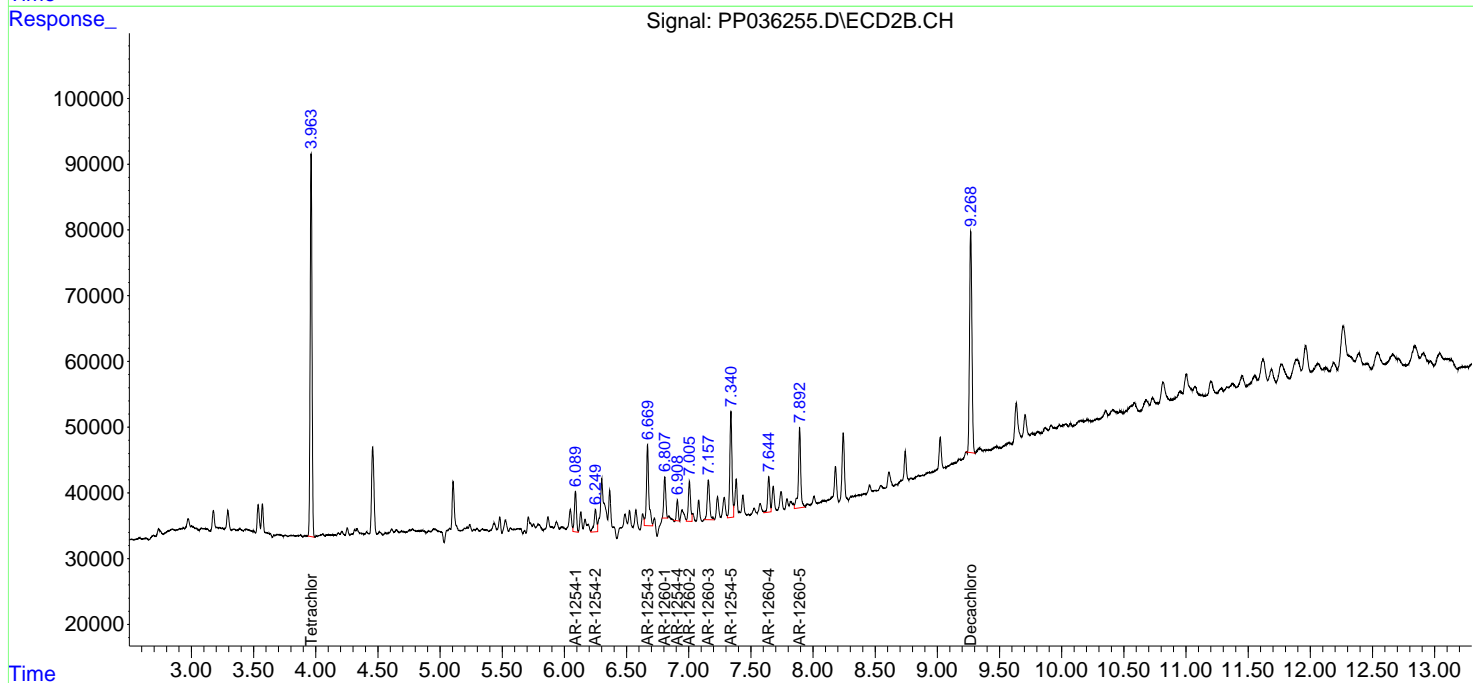
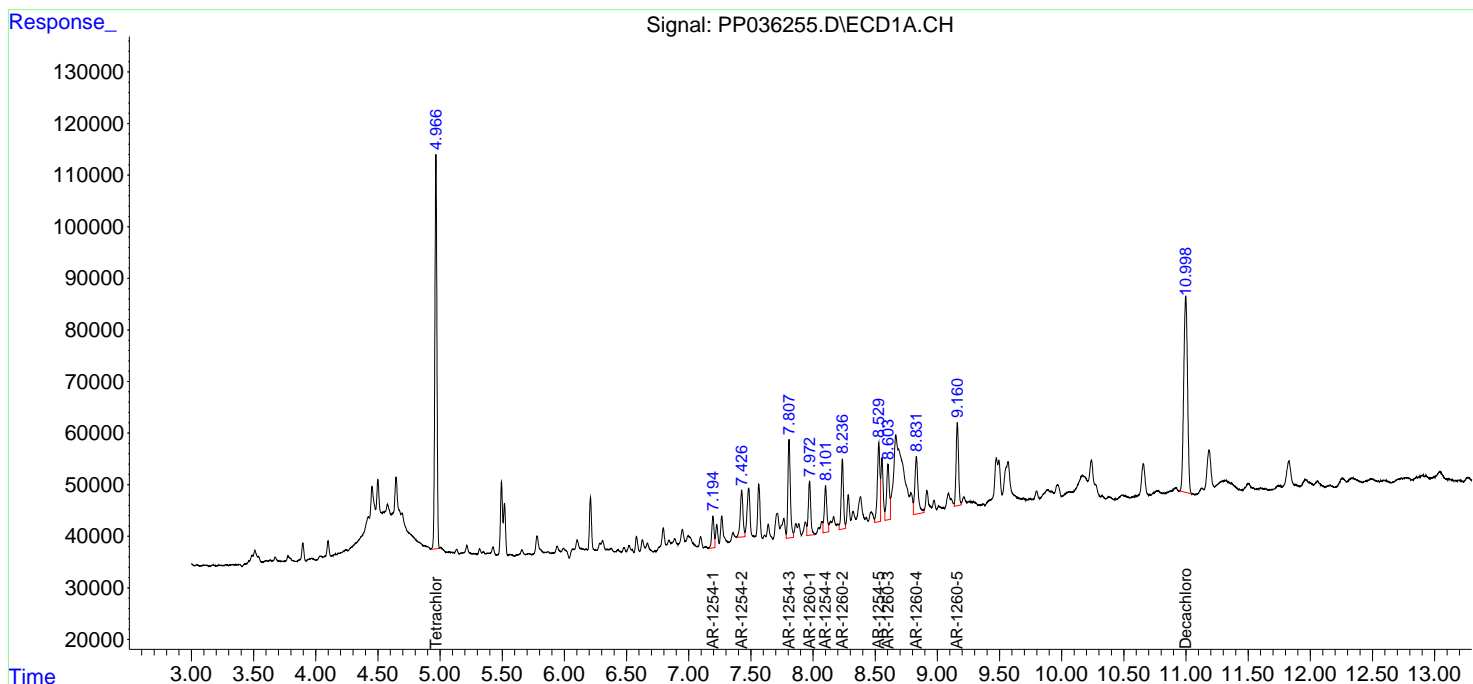
Data Path : Z:\pestpcbsrv\HPCHEM1\ECD_P\Data\PP060721\
 Data File : PP036255.D
 Signal(s) : Signal #1: ECD1A.CH Signal #2: ECD2B.CH
 Acq On : 07 Jun 2021 14:17
 Operator : DD\AJ
 Sample : M2603-13
 Misc :
 ALS Vial : 17 Sample Multiplier: 1

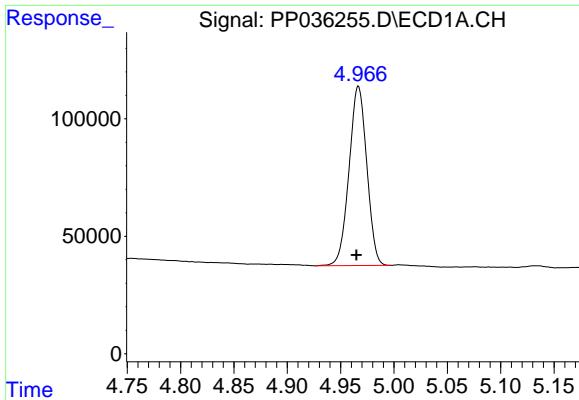
Instrument :
 ECD_P
 ClientSampled :
 FAM4-WC4

Manual Integrations
APPROVED
 Ankita
 6/8/2021 3:22:18 PM

Integration File signal 1: autoint1.e
 Integration File signal 2: autoint2.e
 Quant Time: Jun 07 15:17:39 2021
 Quant Method : Z:\pestpcbsrv\HPCHEM1\ECD_P\methods\PP052521.M
 Quant Title : GC EXTRACTABLES
 QLast Update : Wed May 26 00:48:29 2021
 Response via : Initial Calibration
 Integrator: ChemStation 6890 Scale Mode: Small noise peaks clipped

Volume Inj. : 2 µl
 Signal #1 Phase : ZB-MR1 Signal #2 Phase: ZB-MR2
 Signal #1 Info : 30Mx0.32mmx 0.50µ Signal #2 Info : 30M x 0.32mm x 0.25µm

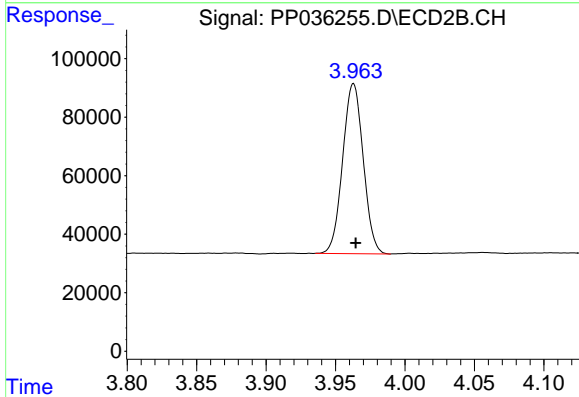




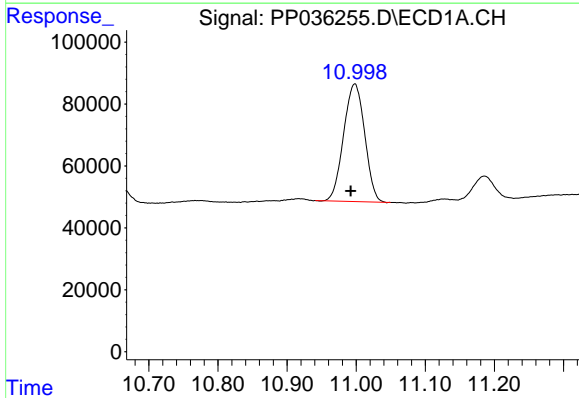
#1 Tetrachloro-m-xylene
 R.T.: 4.967 min
 Delta R.T.: 0.002 min
 Response: 882657
 Conc: 19.83 ng/ml

Instrument :
 ECD_P
 ClientSampled :
 FAM4-WC4

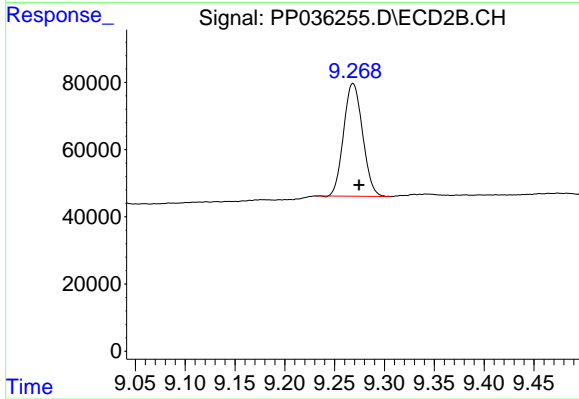
Manual Integrations
 APPROVED
 Ankita
 6/8/2021 3:22:18 PM



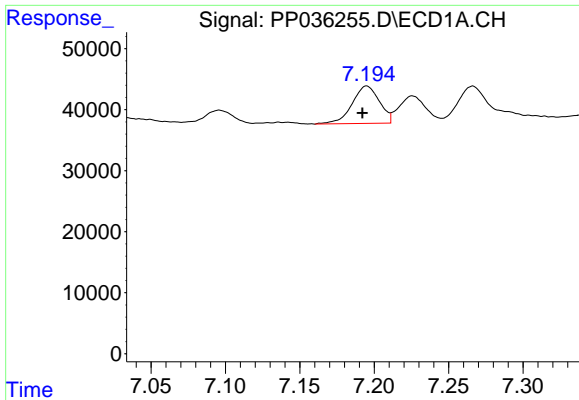
#1 Tetrachloro-m-xylene
 R.T.: 3.963 min
 Delta R.T.: -0.002 min
 Response: 598933
 Conc: 21.46 ng/ml



#2 Decachlorobiphenyl
 R.T.: 10.998 min
 Delta R.T.: 0.006 min
 Response: 804742
 Conc: 18.83 ng/ml



#2 Decachlorobiphenyl
 R.T.: 9.268 min
 Delta R.T.: -0.006 min
 Response: 445291
 Conc: 19.41 ng/ml

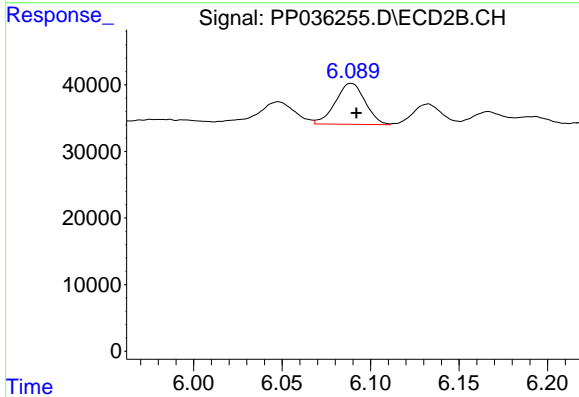


#26 AR-1254-1

R.T.: 7.195 min
 Delta R.T.: 0.003 min
 Response: 78316
 Conc: 48.34 ng/ml

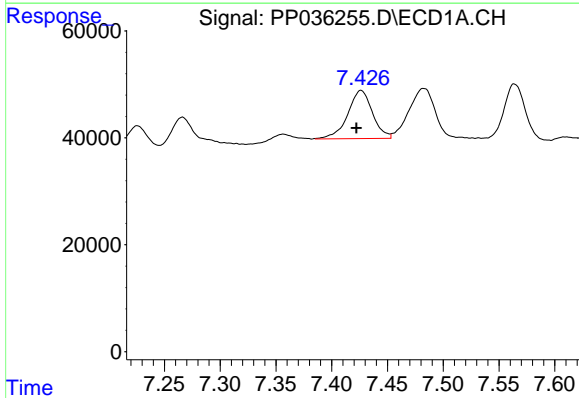
Instrument :
 ECD_P
ClientSampled :
 FAM4-WC4

Manual Integrations
APPROVED
 Ankita
 6/8/2021 3:22:18 PM



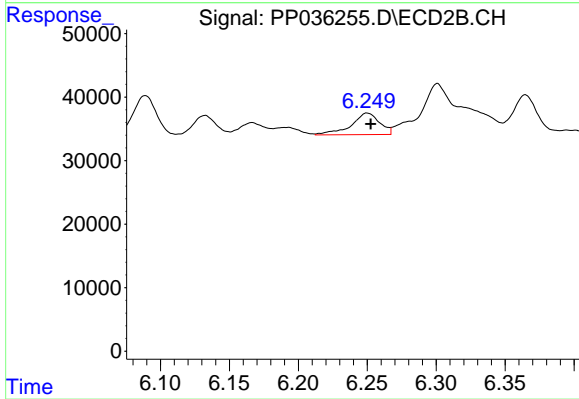
#26 AR-1254-1

R.T.: 6.089 min
 Delta R.T.: -0.003 min
 Response: 71949
 Conc: 55.06 ng/ml



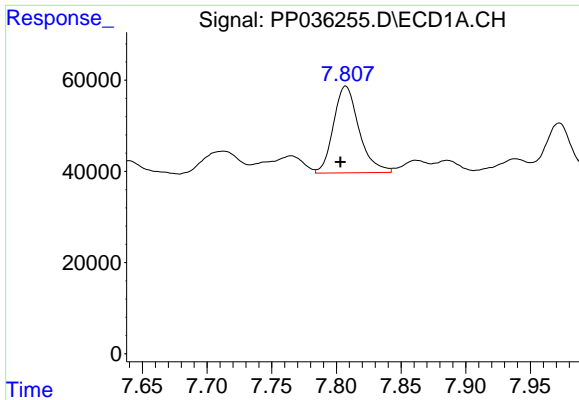
#27 AR-1254-2

R.T.: 7.426 min
 Delta R.T.: 0.004 min
 Response: 139485
 Conc: 56.62 ng/ml m



#27 AR-1254-2

R.T.: 6.249 min
 Delta R.T.: -0.004 min
 Response: 49371
 Conc: 42.82 ng/ml m

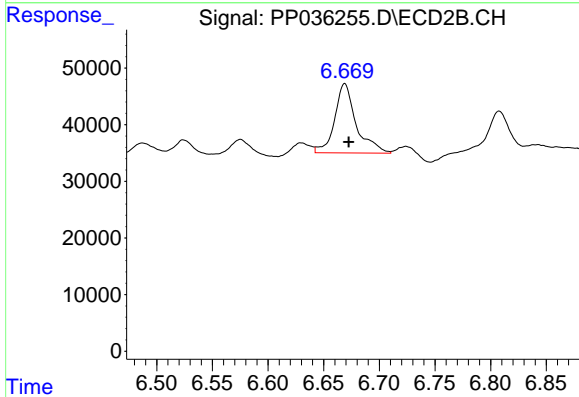


#28 AR-1254-3

R.T.: 7.807 min
 Delta R.T.: 0.004 min
 Response: 261874
 Conc: 99.27 ng/ml

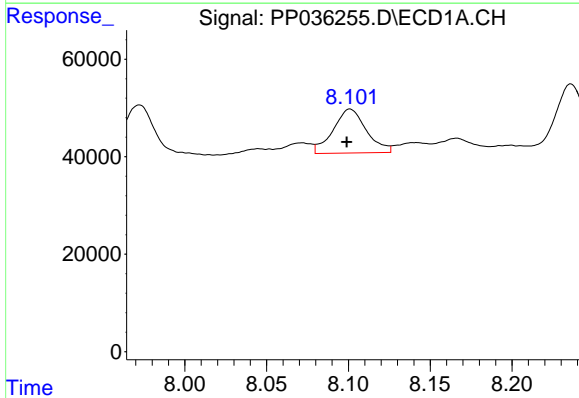
Instrument :
 ECD_P
 ClientSampleId :
 FAM4-WC4

Manual Integrations
APPROVED
 Ankita
 6/8/2021 3:22:18 PM



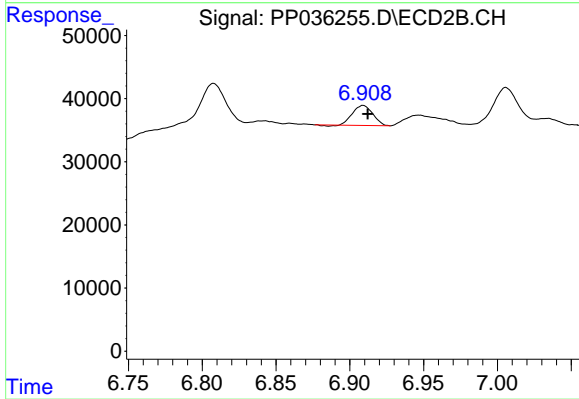
#28 AR-1254-3

R.T.: 6.669 min
 Delta R.T.: -0.004 min
 Response: 164453
 Conc: 86.37 ng/ml m



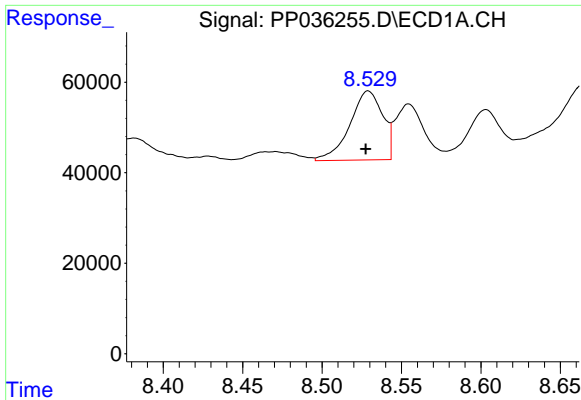
#29 AR-1254-4

R.T.: 8.101 min
 Delta R.T.: 0.002 min
 Response: 127902
 Conc: 63.37 ng/ml



#29 AR-1254-4

R.T.: 6.909 min
 Delta R.T.: -0.003 min
 Response: 30038
 Conc: 25.16 ng/ml



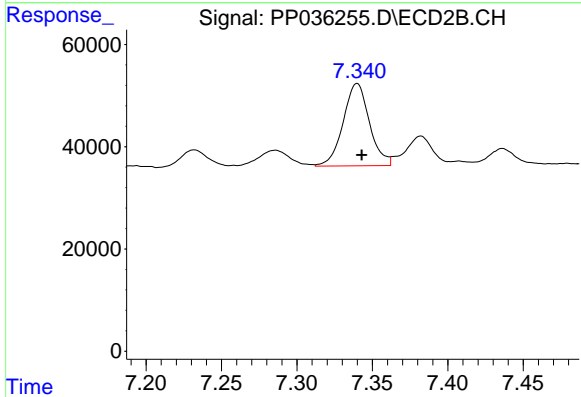
#30 AR-1254-5

R.T.: 8.529 min
 Delta R.T.: 0.002 min
 Response: 219517
 Conc: 96.74 ng/ml

Instrument :
 ECD_P
 ClientSampled :
 FAM4-WC4

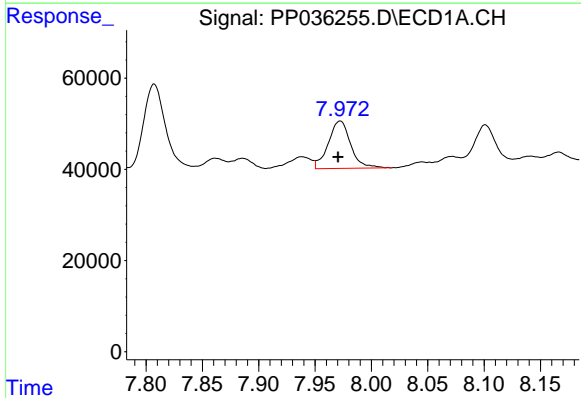
Manual Integrations
 APPROVED

Ankita
 6/8/2021 3:22:18 PM



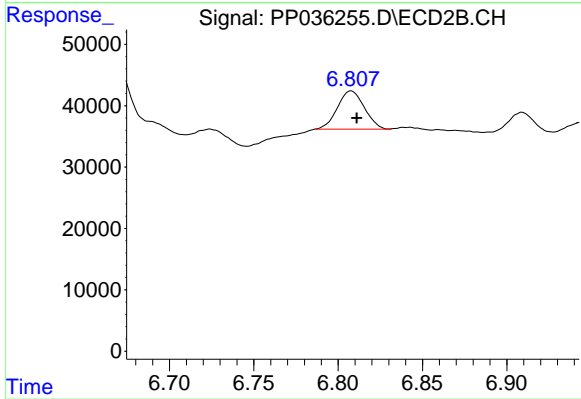
#30 AR-1254-5

R.T.: 7.340 min
 Delta R.T.: -0.003 min
 Response: 195708
 Conc: 114.71 ng/ml



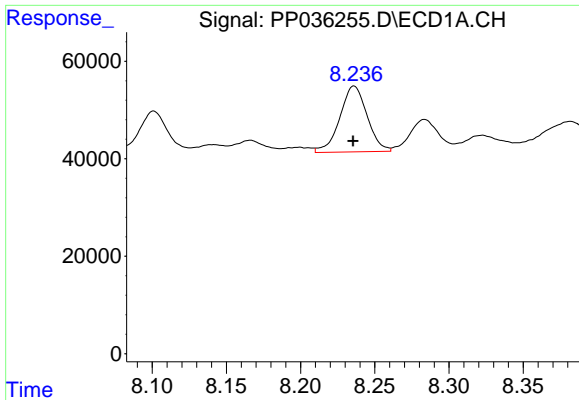
#31 AR-1260-1

R.T.: 7.972 min
 Delta R.T.: 0.002 min
 Response: 144207
 Conc: 71.19 ng/ml



#31 AR-1260-1

R.T.: 6.807 min
 Delta R.T.: -0.004 min
 Response: 69339
 Conc: 55.57 ng/ml m

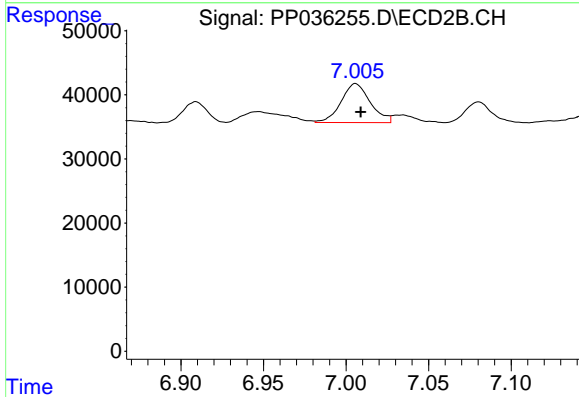


#32 AR-1260-2

R.T.: 8.236 min
 Delta R.T.: 0.000 min
 Response: 173247
 Conc: 70.92 ng/ml

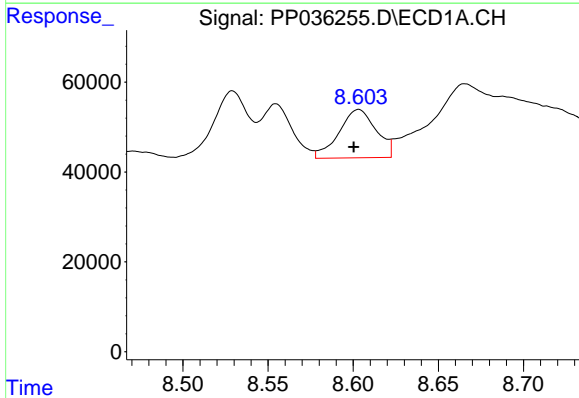
Instrument :
 ECD_P
ClientSampled :
 FAM4-WC4

Manual Integrations
APPROVED
 Ankita
 6/8/2021 3:22:18 PM



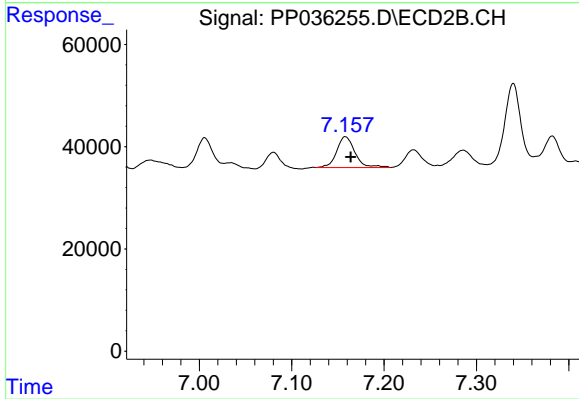
#32 AR-1260-2

R.T.: 7.006 min
 Delta R.T.: -0.003 min
 Response: 74945
 Conc: 49.73 ng/ml



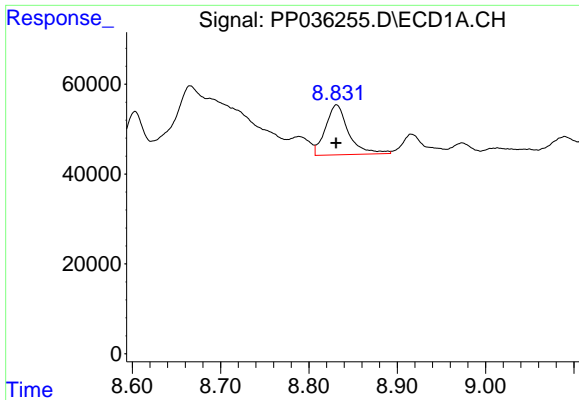
#33 AR-1260-3

R.T.: 8.603 min
 Delta R.T.: 0.003 min
 Response: 163660
 Conc: 88.13 ng/ml



#33 AR-1260-3

R.T.: 7.158 min
 Delta R.T.: -0.006 min
 Response: 83254
 Conc: 59.24 ng/ml

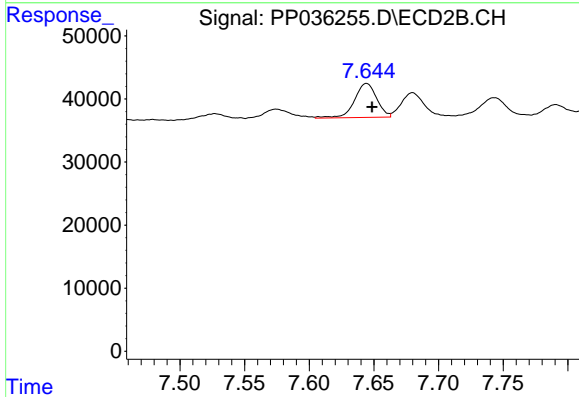


#34 AR-1260-4

R.T.: 8.831 min
 Delta R.T.: 0.000 min
 Response: 201375
 Conc: 90.18 ng/ml

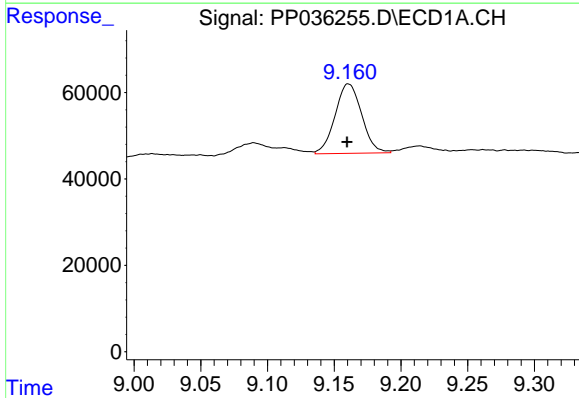
Instrument :
 ECD_P
ClientSampled :
 FAM4-WC4

Manual Integrations
APPROVED
 Ankita
 6/8/2021 3:22:18 PM



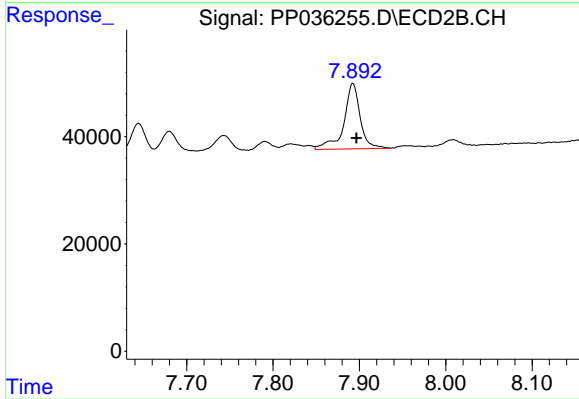
#34 AR-1260-4

R.T.: 7.644 min
 Delta R.T.: -0.004 min
 Response: 64494
 Conc: 55.16 ng/ml



#35 AR-1260-5

R.T.: 9.161 min
 Delta R.T.: 0.001 min
 Response: 223017
 Conc: 52.23 ng/ml



#35 AR-1260-5

R.T.: 7.892 min
 Delta R.T.: -0.004 min
 Response: 159634
 Conc: 57.67 ng/ml