

Data Path : Z:\pestpcbsrv\HPCHEM1\ECD_P\Data\PP060721\
 Data File : PP036273.D
 Signal(s) : Signal #1: ECD1A.CH Signal #2: ECD2B.CH
 Acq On : 07 Jun 2021 20:11
 Operator : DD\AJ
 Sample : M2613-07MS
 Misc :
 ALS Vial : 33 Sample Multiplier: 1

Instrument :
 ECD_P
 ClientSampleId :
 18-B12(110-114)MS

Integration File signal 1: autoint1.e
 Integration File signal 2: autoint2.e
 Quant Time: Jun 08 02:12:38 2021
 Quant Method : Z:\pestpcbsrv\HPCHEM1\ECD_P\methods\PP052521.M
 Quant Title : GC EXTRACTABLES
 QLast Update : Wed May 26 00:48:29 2021
 Response via : Initial Calibration
 Integrator: ChemStation 6890 Scale Mode: Small noise peaks clipped

Volume Inj. : 2 µl
 Signal #1 Phase : ZB-MR2 Signal #2 Phase: ZB-MR2
 Signal #1 Info : 30Mx0.32mmx 0.50µ Signal #2 Info : 30M x 0.32mm x 0.25µm

Compound	RT#1	RT#2	Resp#1	Resp#2	ng/ml	ng/ml

System Monitoring Compounds						
1) SA Tetrachlo...	4.966	3.962	938503	590803	21.086	21.169
2) SA Decachlor...	10.996	9.268	890370	545350	20.834	23.771
Target Compounds						
3) L1 AR-1016-1	6.285	5.217	778842	503295	485.929	540.329
4) L1 AR-1016-2	6.310	5.238	1101291	692065	486.010	529.733
5) L1 AR-1016-3	6.375	5.428	710007	384822	490.314	544.208
6) L1 AR-1016-4	6.483	5.482	600823	286671	496.172	539.651
7) L1 AR-1016-5	6.797	5.709	584311	382830	493.418	558.764
31) L7 AR-1260-1	7.972	6.808	1035589	707788	511.219	567.277
32) L7 AR-1260-2	8.238	7.005	1193373	848406	488.494	562.993
33) L7 AR-1260-3	8.602	7.159	786748	809707	423.655	576.132 #
34) L7 AR-1260-4	8.832	7.644	1000839	594627	448.194	508.610
35) L7 AR-1260-5	9.161	7.892	1801421	1404330	421.905	507.314

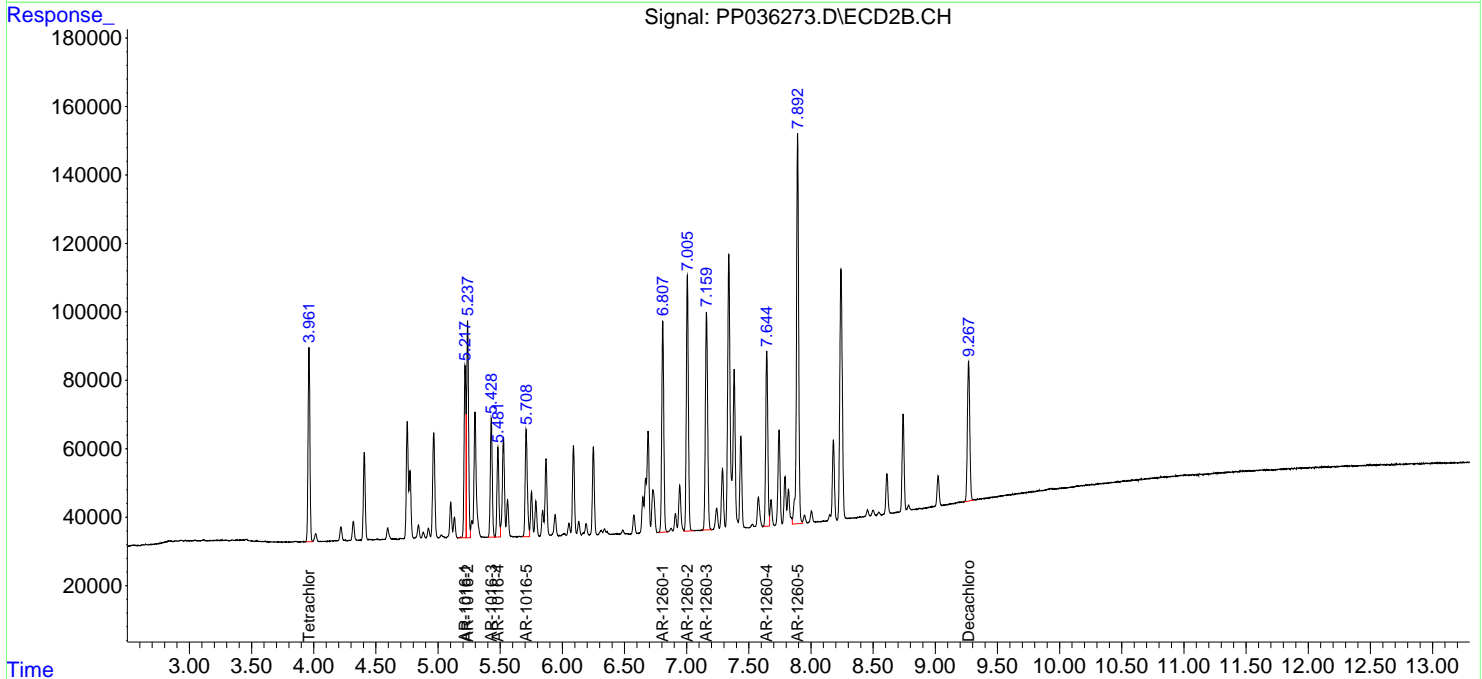
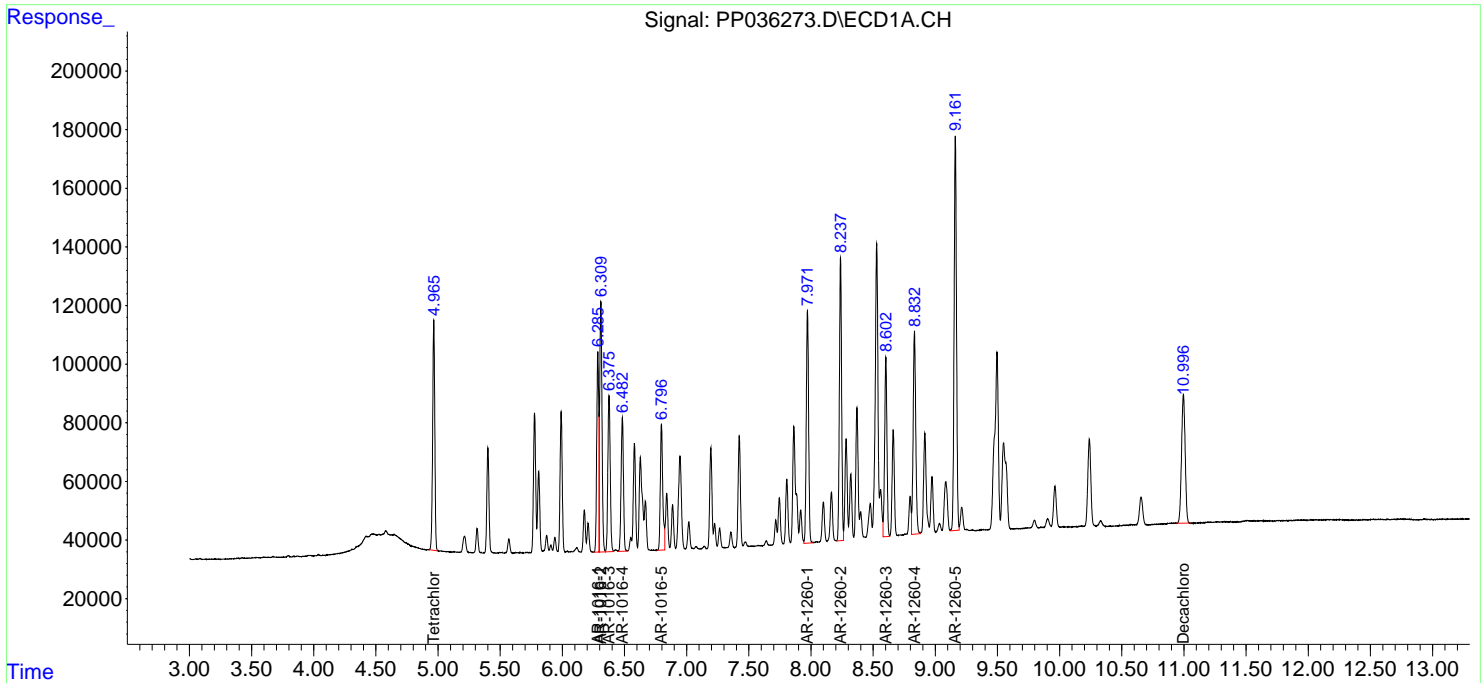
(f)=RT Delta > 1/2 Window (#)=Amounts differ by > 25% (m)=manual int.

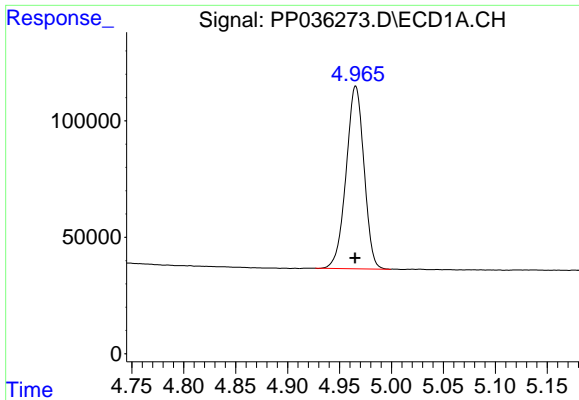
Data Path : Z:\pestpcbsrv\HPCHEM1\ECD_P\Data\PP060721\
 Data File : PP036273.D
 Signal(s) : Signal #1: ECD1A.CH Signal #2: ECD2B.CH
 Acq On : 07 Jun 2021 20:11
 Operator : DD\AJ
 Sample : M2613-07MS
 Misc :
 ALS Vial : 33 Sample Multiplier: 1

Instrument :
 ECD_P
 ClientSampled :
 18-B12(110-114)MS

Integration File signal 1: autoint1.e
 Integration File signal 2: autoint2.e
 Quant Time: Jun 08 02:12:38 2021
 Quant Method : Z:\pestpcbsrv\HPCHEM1\ECD_P\methods\PP052521.M
 Quant Title : GC EXTRACTABLES
 QLast Update : Wed May 26 00:48:29 2021
 Response via : Initial Calibration
 Integrator: ChemStation 6890 Scale Mode: Small noise peaks clipped

Volume Inj. : 2 µl
 Signal #1 Phase : ZB-MR1 Signal #2 Phase: ZB-MR2
 Signal #1 Info : 30Mx0.32mmx 0.50µ Signal #2 Info : 30M x 0.32mm x 0.25µm

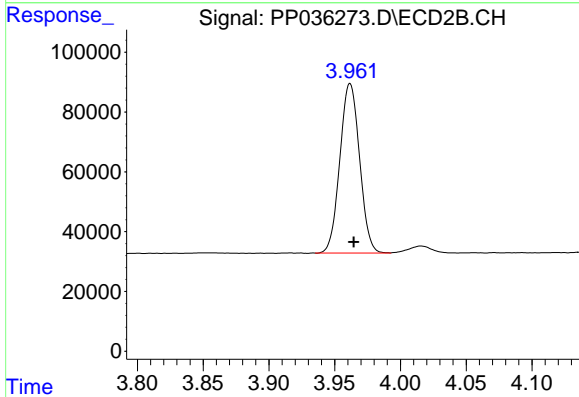




#1 Tetrachloro-m-xylene

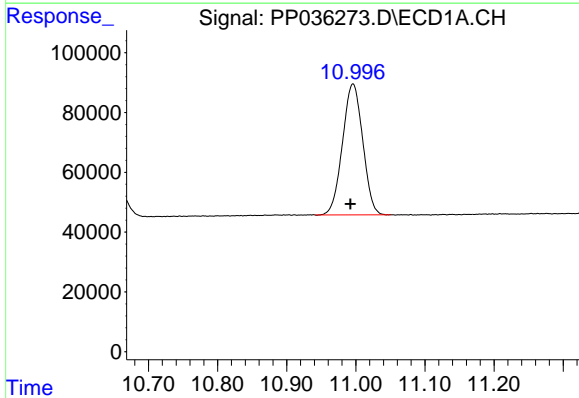
R.T.: 4.966 min
 Delta R.T.: 0.000 min
 Response: 938503
 Conc: 21.09 ng/ml

Instrument :
 ECD_P
 ClientSampleId :
 18-B12(110-114)MS



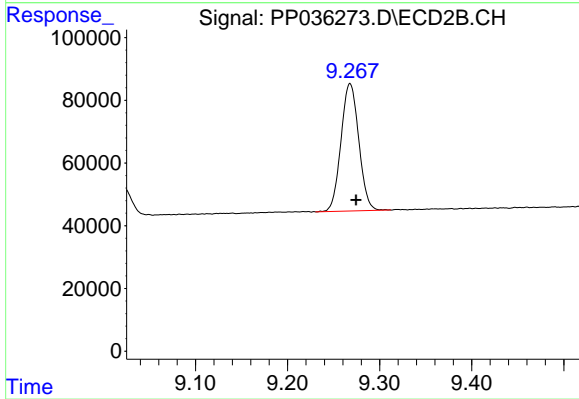
#1 Tetrachloro-m-xylene

R.T.: 3.962 min
 Delta R.T.: -0.003 min
 Response: 590803
 Conc: 21.17 ng/ml



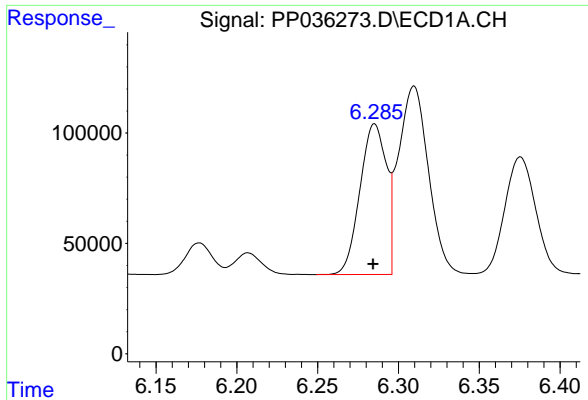
#2 Decachlorobiphenyl

R.T.: 10.996 min
 Delta R.T.: 0.004 min
 Response: 890370
 Conc: 20.83 ng/ml



#2 Decachlorobiphenyl

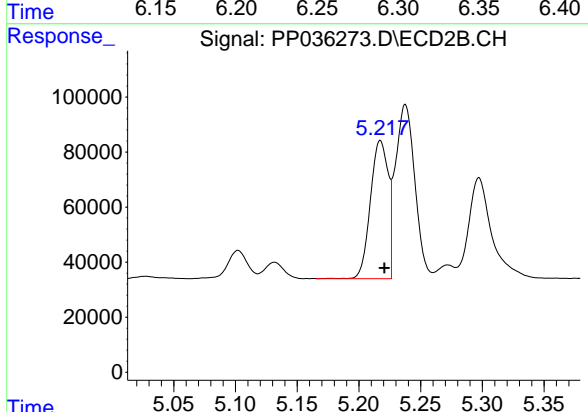
R.T.: 9.268 min
 Delta R.T.: -0.007 min
 Response: 545350
 Conc: 23.77 ng/ml



#3 AR-1016-1

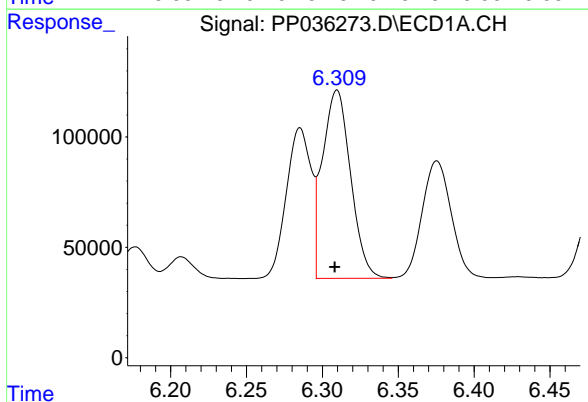
R.T.: 6.285 min
 Delta R.T.: 0.000 min
 Response: 778842
 Conc: 485.93 ng/ml

Instrument :
 ECD_P
ClientSampleId :
 18-B12(110-114)MS



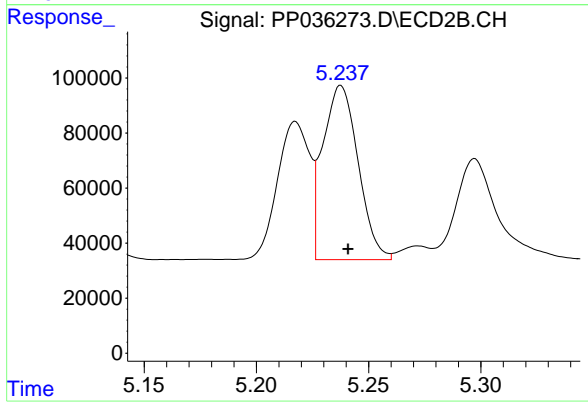
#3 AR-1016-1

R.T.: 5.217 min
 Delta R.T.: -0.003 min
 Response: 503295
 Conc: 540.33 ng/ml



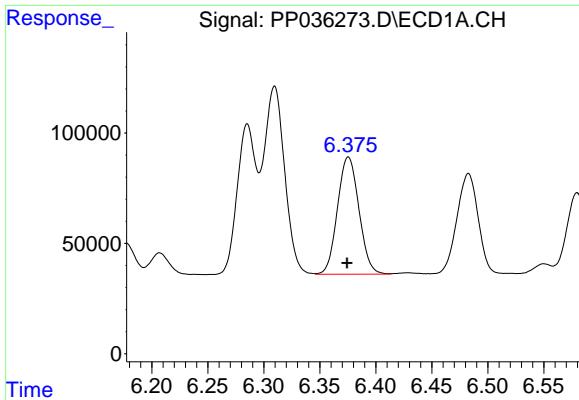
#4 AR-1016-2

R.T.: 6.310 min
 Delta R.T.: 0.002 min
 Response: 1101291
 Conc: 486.01 ng/ml



#4 AR-1016-2

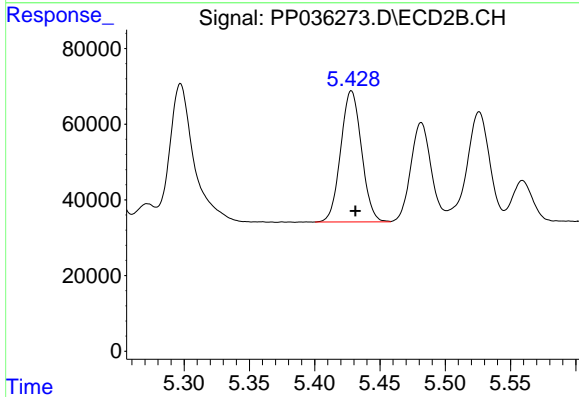
R.T.: 5.238 min
 Delta R.T.: -0.003 min
 Response: 692065
 Conc: 529.73 ng/ml



#5 AR-1016-3

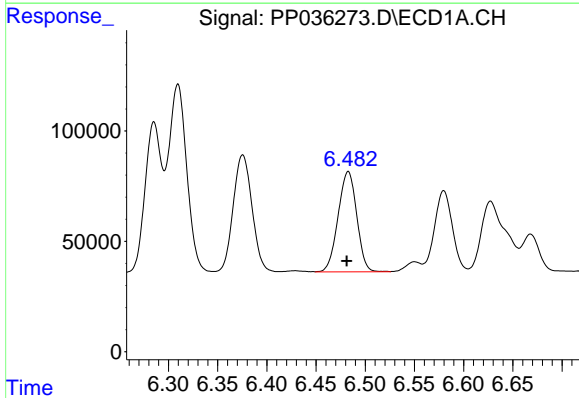
R.T.: 6.375 min
 Delta R.T.: 0.001 min
 Response: 710007
 Conc: 490.31 ng/ml

Instrument :
 ECD_P
ClientSampleId :
 18-B12(110-114)MS



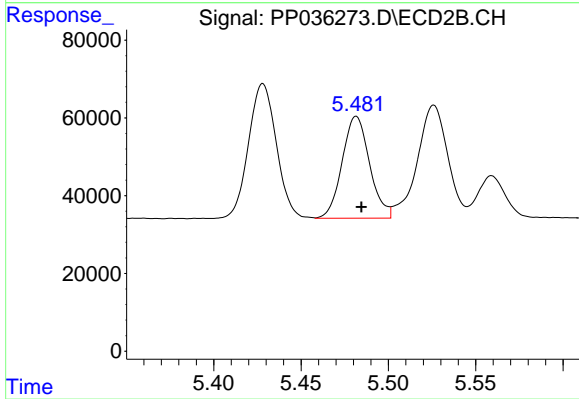
#5 AR-1016-3

R.T.: 5.428 min
 Delta R.T.: -0.003 min
 Response: 384822
 Conc: 544.21 ng/ml



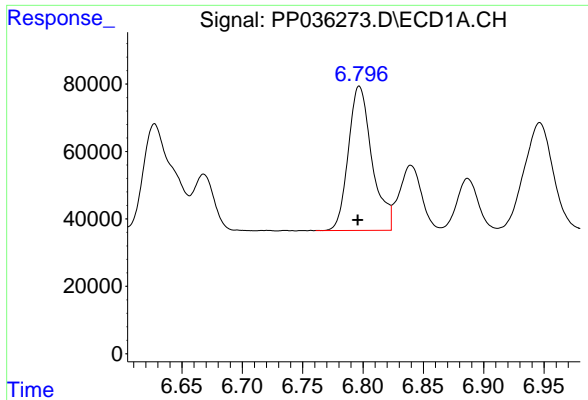
#6 AR-1016-4

R.T.: 6.483 min
 Delta R.T.: 0.001 min
 Response: 600823
 Conc: 496.17 ng/ml



#6 AR-1016-4

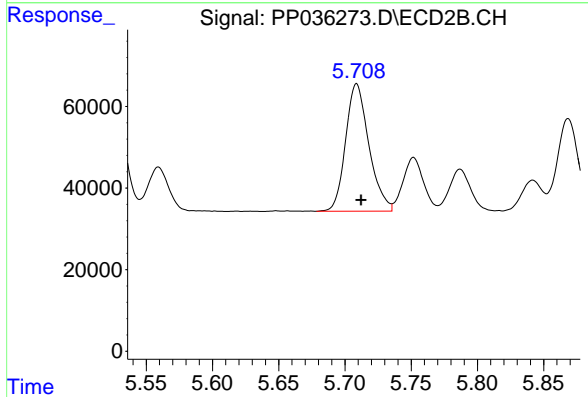
R.T.: 5.482 min
 Delta R.T.: -0.003 min
 Response: 286671
 Conc: 539.65 ng/ml



#7 AR-1016-5

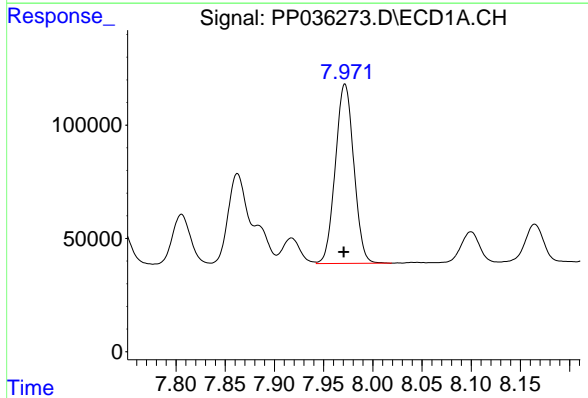
R.T.: 6.797 min
 Delta R.T.: 0.001 min
 Response: 584311
 Conc: 493.42 ng/ml

Instrument :
 ECD_P
 ClientSampleId :
 18-B12(110-114)MS



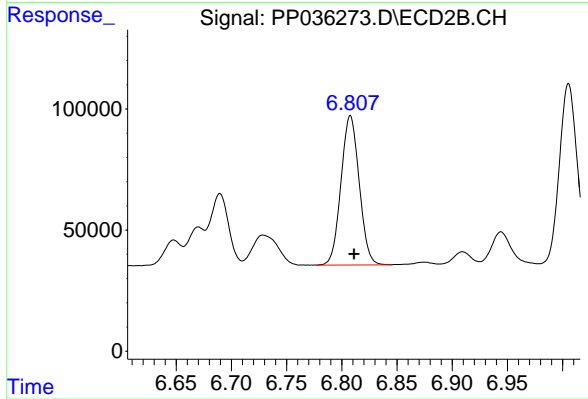
#7 AR-1016-5

R.T.: 5.709 min
 Delta R.T.: -0.003 min
 Response: 382830
 Conc: 558.76 ng/ml



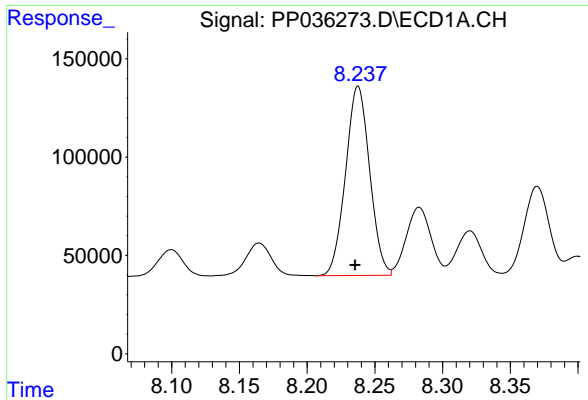
#31 AR-1260-1

R.T.: 7.972 min
 Delta R.T.: 0.001 min
 Response: 1035589
 Conc: 511.22 ng/ml



#31 AR-1260-1

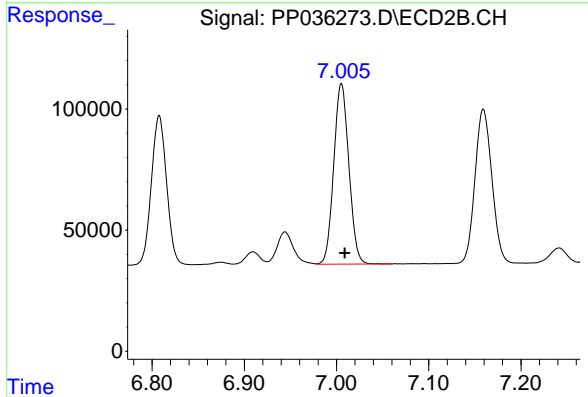
R.T.: 6.808 min
 Delta R.T.: -0.003 min
 Response: 707788
 Conc: 567.28 ng/ml



#32 AR-1260-2

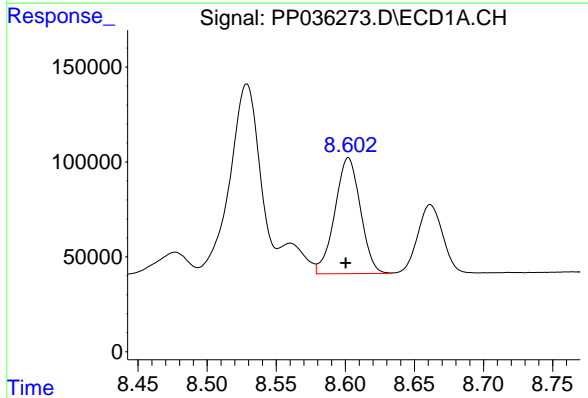
R.T.: 8.238 min
 Delta R.T.: 0.002 min
 Response: 1193373
 Conc: 488.49 ng/ml

Instrument :
 ECD_P
 ClientSampleId :
 18-B12(110-114)MS



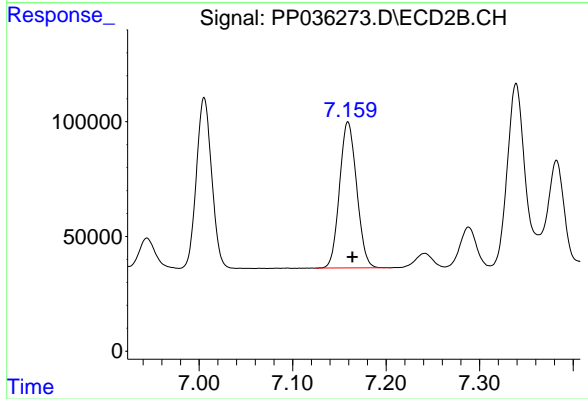
#32 AR-1260-2

R.T.: 7.005 min
 Delta R.T.: -0.004 min
 Response: 848406
 Conc: 562.99 ng/ml



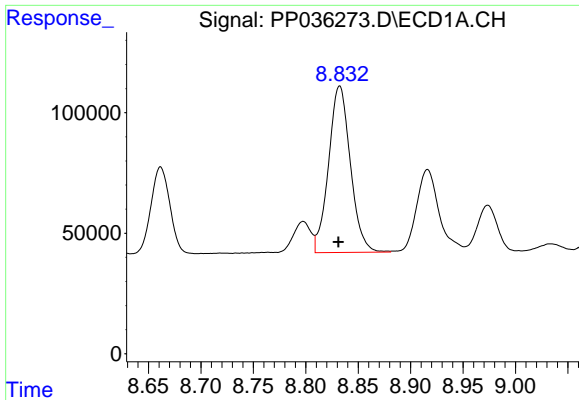
#33 AR-1260-3

R.T.: 8.602 min
 Delta R.T.: 0.002 min
 Response: 786748
 Conc: 423.66 ng/ml



#33 AR-1260-3

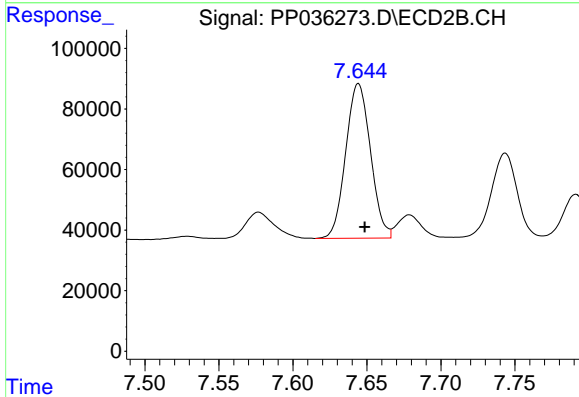
R.T.: 7.159 min
 Delta R.T.: -0.005 min
 Response: 809707
 Conc: 576.13 ng/ml



#34 AR-1260-4

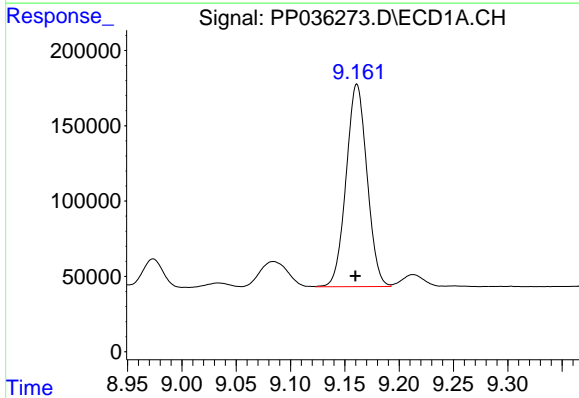
R.T.: 8.832 min
 Delta R.T.: 0.001 min
 Response: 1000839
 Conc: 448.19 ng/ml

Instrument :
 ECD_P
ClientSampleId :
 18-B12(110-114)MS



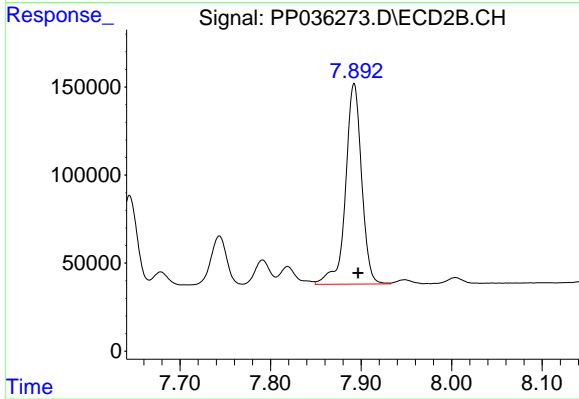
#34 AR-1260-4

R.T.: 7.644 min
 Delta R.T.: -0.004 min
 Response: 594627
 Conc: 508.61 ng/ml



#35 AR-1260-5

R.T.: 9.161 min
 Delta R.T.: 0.002 min
 Response: 1801421
 Conc: 421.91 ng/ml



#35 AR-1260-5

R.T.: 7.892 min
 Delta R.T.: -0.004 min
 Response: 1404330
 Conc: 507.31 ng/ml