

Data Path : Z:\pestpcbsrv\HPCHEM1\ECD_P\Data\PP060721\
 Data File : PP036274.D
 Signal(s) : Signal #1: ECD1A.CH Signal #2: ECD2B.CH
 Acq On : 07 Jun 2021 20:28
 Operator : DD\AJ
 Sample : M2613-07MSD
 Misc :
 ALS Vial : 34 Sample Multiplier: 1

Instrument :
 ECD_P
 ClientSampleId :
 18-B12(110-114)MSD

Integration File signal 1: autoint1.e
 Integration File signal 2: autoint2.e
 Quant Time: Jun 08 02:13:09 2021
 Quant Method : Z:\pestpcbsrv\HPCHEM1\ECD_P\methods\PP052521.M
 Quant Title : GC EXTRACTABLES
 QLast Update : Wed May 26 00:48:29 2021
 Response via : Initial Calibration
 Integrator: ChemStation 6890 Scale Mode: Small noise peaks clipped

Volume Inj. : 2 µl
 Signal #1 Phase : ZB-MR2 Signal #2 Phase: ZB-MR2
 Signal #1 Info : 30Mx0.32mmx 0.50µ Signal #2 Info : 30M x 0.32mm x 0.25µm

Compound	RT#1	RT#2	Resp#1	Resp#2	ng/ml	ng/ml

System Monitoring Compounds						
1) SA Tetrachlo...	4.965	3.960	947773	601558	21.294	21.554
2) SA Decachlor...	10.994	9.268	893823	544006	20.915	23.712
Target Compounds						
3) L1 AR-1016-1	6.285	5.216	780469	510767	486.944	548.351
4) L1 AR-1016-2	6.309	5.236	1107258	705678	488.643	540.154
5) L1 AR-1016-3	6.374	5.427	713598	388132	492.793	548.888
6) L1 AR-1016-4	6.481	5.480	602626	289041	497.661	544.113
7) L1 AR-1016-5	6.796	5.708	587373	381726	496.003	557.153
31) L7 AR-1260-1	7.971	6.806	1036524	719658	511.681	576.791
32) L7 AR-1260-2	8.237	7.004	1203441	856814	492.615	568.573
33) L7 AR-1260-3	8.601	7.158	786830	814241	423.700	579.358 #
34) L7 AR-1260-4	8.832	7.643	995365	598656	445.743	512.057
35) L7 AR-1260-5	9.161	7.892	1795249	1412208	420.460	510.160

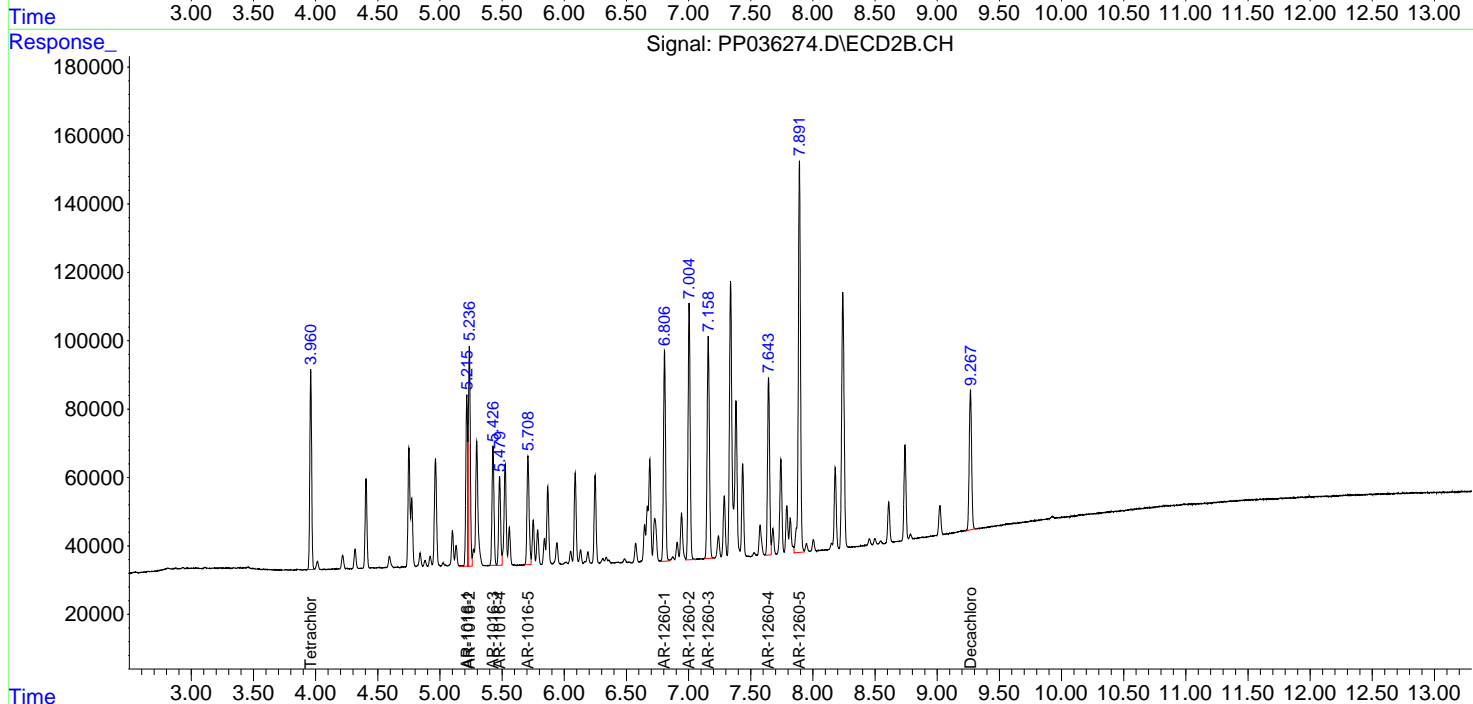
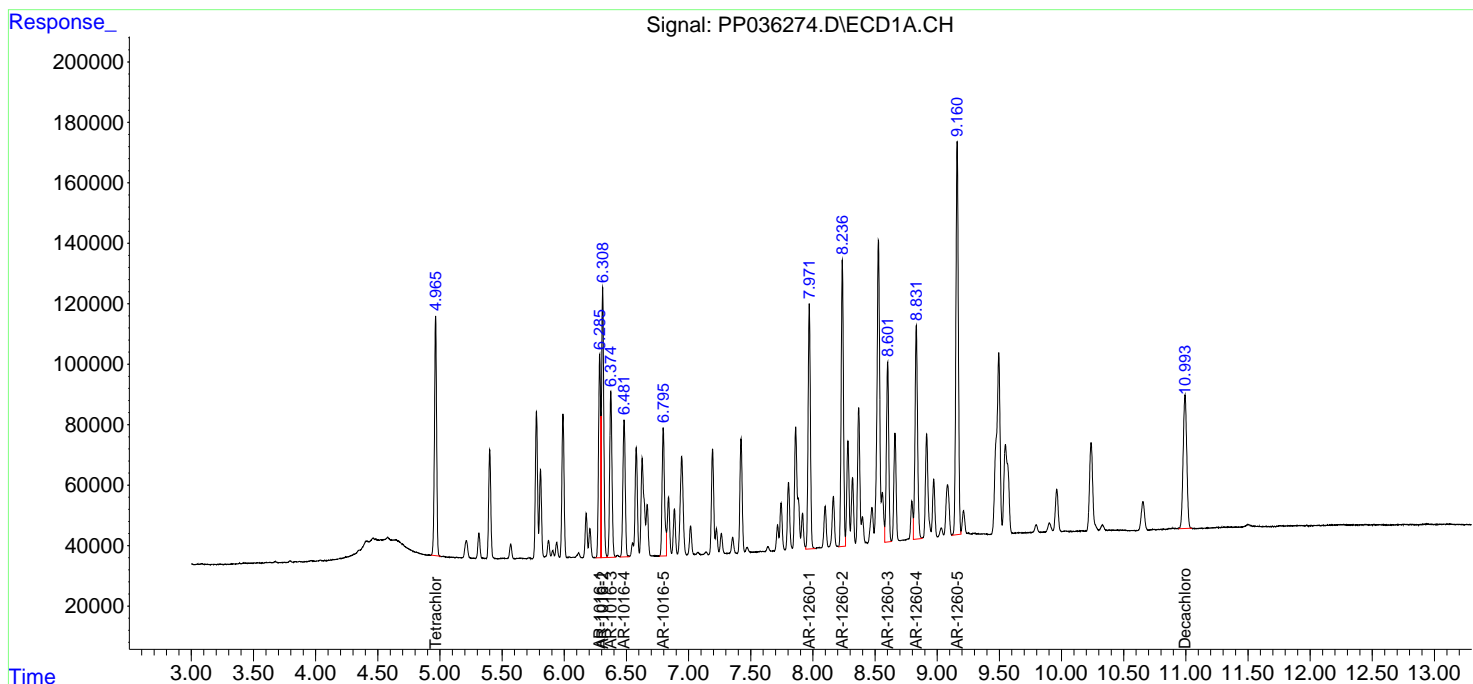
(f)=RT Delta > 1/2 Window (#)=Amounts differ by > 25% (m)=manual int.

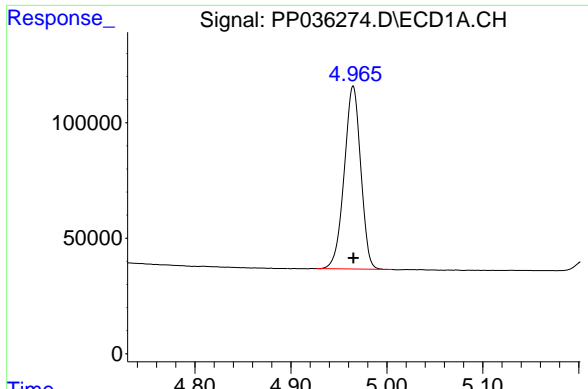
Data Path : Z:\pestpcbsrv\HPCHEM1\ECD_P\Data\PP060721\
 Data File : PP036274.D
 Signal(s) : Signal #1: ECD1A.CH Signal #2: ECD2B.CH
 Acq On : 07 Jun 2021 20:28
 Operator : DD\AJ
 Sample : M2613-07MSD
 Misc :
 ALS Vial : 34 Sample Multiplier: 1

Instrument :
 ECD_P
 ClientSampleId :
 18-B12(110-114)MSD

Integration File signal 1: autoint1.e
 Integration File signal 2: autoint2.e
 Quant Time: Jun 08 02:13:09 2021
 Quant Method : Z:\pestpcbsrv\HPCHEM1\ECD_P\methods\PP052521.M
 Quant Title : GC EXTRACTABLES
 QLast Update : Wed May 26 00:48:29 2021
 Response via : Initial Calibration
 Integrator: ChemStation 6890 Scale Mode: Small noise peaks clipped

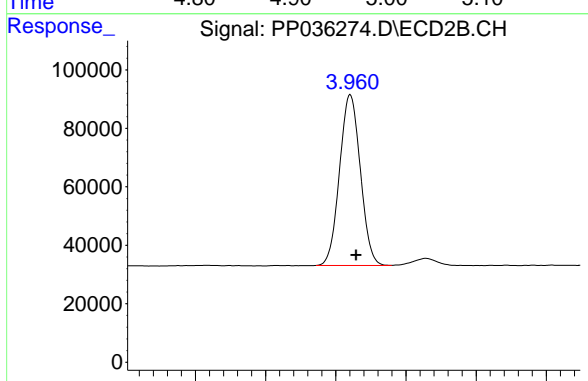
Volume Inj. : 2 µl
 Signal #1 Phase : ZB-MR1 Signal #2 Phase: ZB-MR2
 Signal #1 Info : 30Mx0.32mmx 0.50µ Signal #2 Info : 30M x 0.32mm x 0.25µm



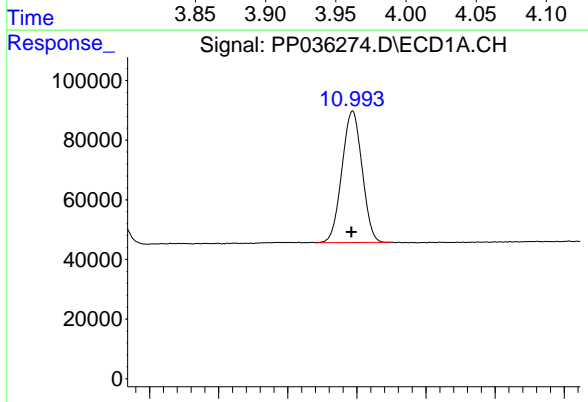


#1 Tetrachloro-m-xylene
 R.T.: 4.965 min
 Delta R.T.: 0.000 min
 Response: 947773
 Conc: 21.29 ng/ml

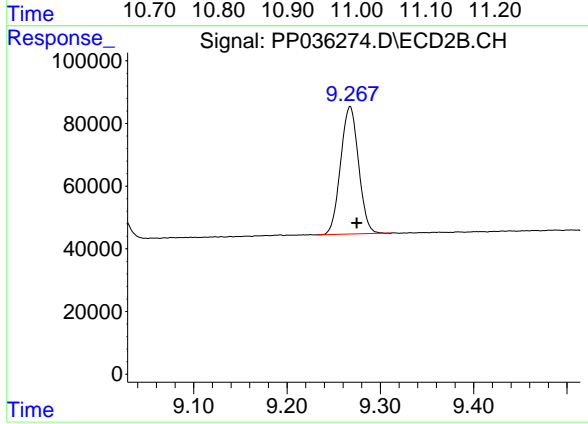
Instrument :
 ECD_P
 ClientSampleId :
 18-B12(110-114)MSD



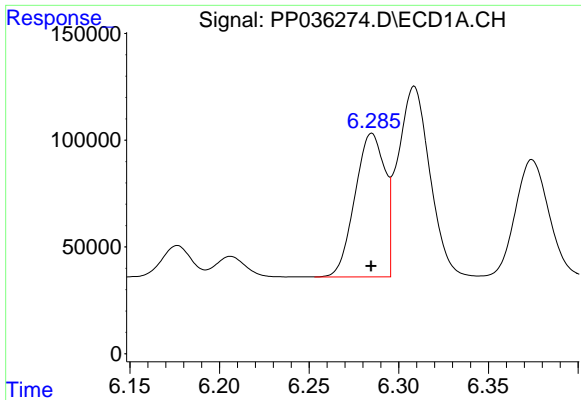
#1 Tetrachloro-m-xylene
 R.T.: 3.960 min
 Delta R.T.: -0.004 min
 Response: 601558
 Conc: 21.55 ng/ml



#2 Decachlorobiphenyl
 R.T.: 10.994 min
 Delta R.T.: 0.002 min
 Response: 893823
 Conc: 20.91 ng/ml



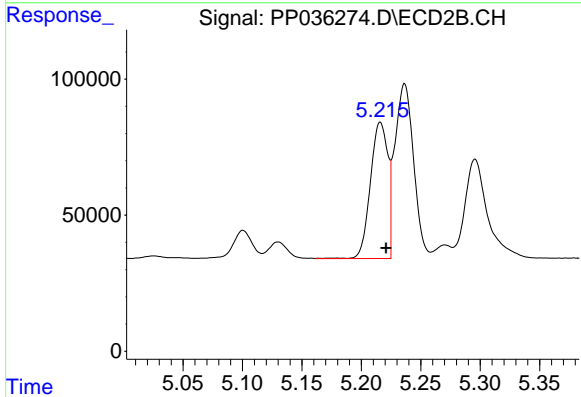
#2 Decachlorobiphenyl
 R.T.: 9.268 min
 Delta R.T.: -0.007 min
 Response: 544006
 Conc: 23.71 ng/ml



#3 AR-1016-1

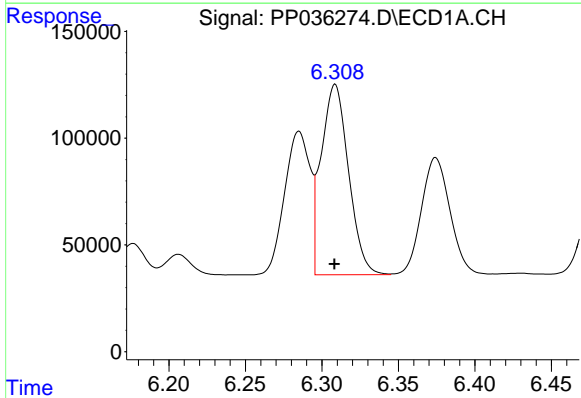
R.T.: 6.285 min
 Delta R.T.: 0.000 min
 Response: 780469
 Conc: 486.94 ng/ml

Instrument :
 ECD_P
 ClientSampleId :
 18-B12(110-114)MSD



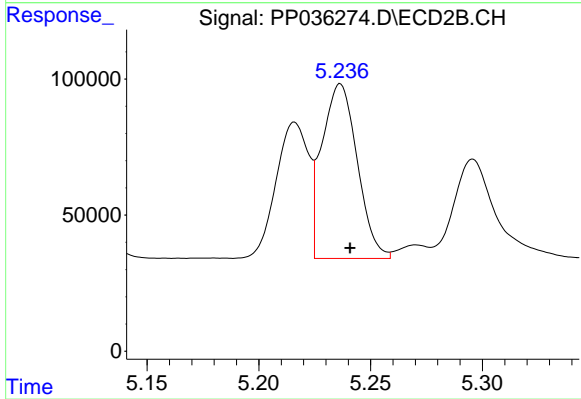
#3 AR-1016-1

R.T.: 5.216 min
 Delta R.T.: -0.005 min
 Response: 510767
 Conc: 548.35 ng/ml



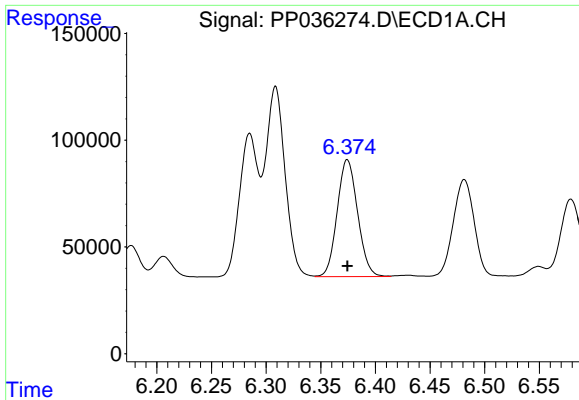
#4 AR-1016-2

R.T.: 6.309 min
 Delta R.T.: 0.000 min
 Response: 1107258
 Conc: 488.64 ng/ml



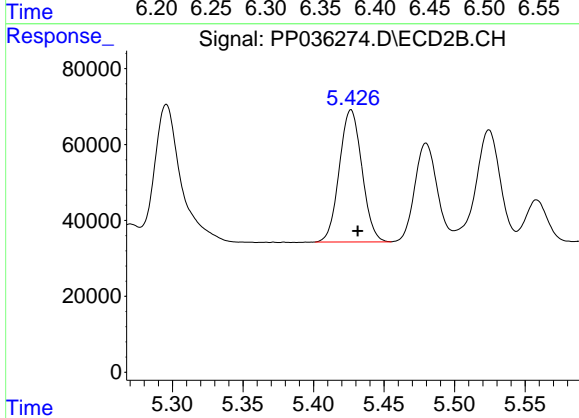
#4 AR-1016-2

R.T.: 5.236 min
 Delta R.T.: -0.004 min
 Response: 705678
 Conc: 540.15 ng/ml

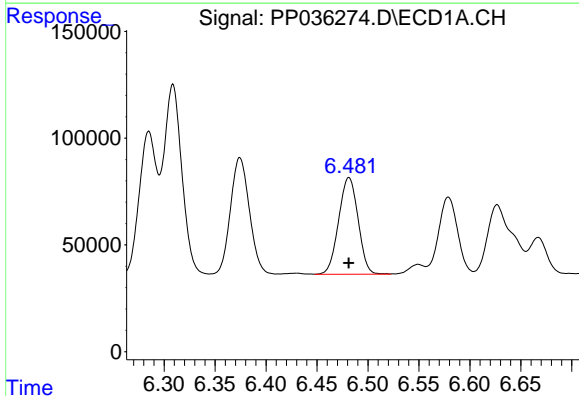


#5 AR-1016-3
 R.T.: 6.374 min
 Delta R.T.: 0.000 min
 Response: 713598
 Conc: 492.79 ng/ml

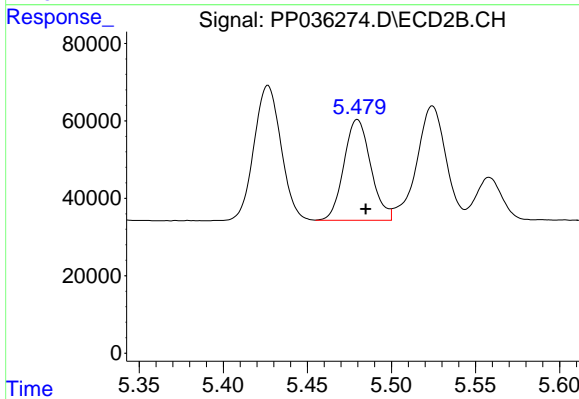
Instrument :
 ECD_P
ClientSampleId :
 18-B12(110-114)MSD



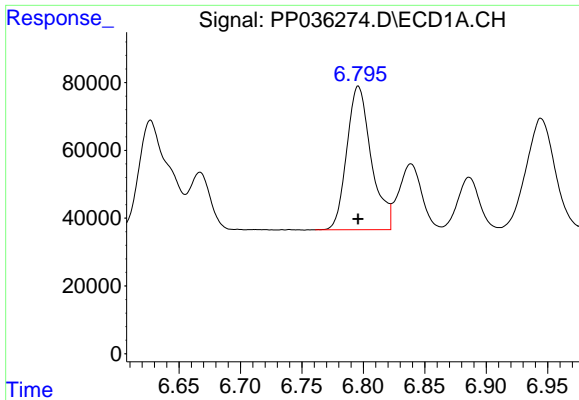
#5 AR-1016-3
 R.T.: 5.427 min
 Delta R.T.: -0.005 min
 Response: 388132
 Conc: 548.89 ng/ml



#6 AR-1016-4
 R.T.: 6.481 min
 Delta R.T.: 0.000 min
 Response: 602626
 Conc: 497.66 ng/ml



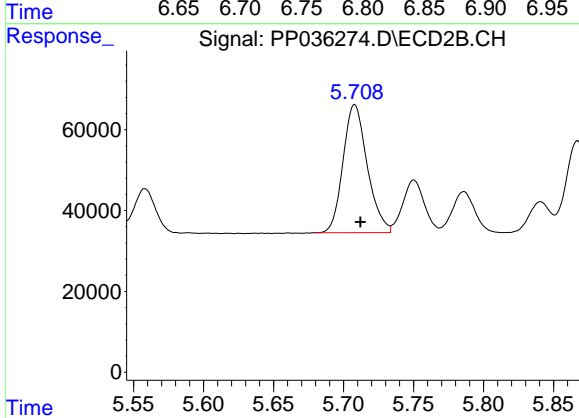
#6 AR-1016-4
 R.T.: 5.480 min
 Delta R.T.: -0.005 min
 Response: 289041
 Conc: 544.11 ng/ml



#7 AR-1016-5

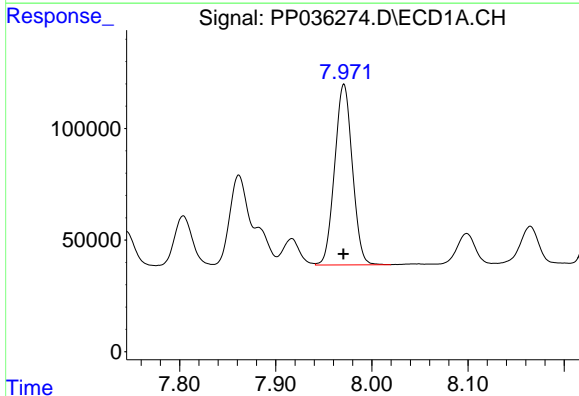
R.T.: 6.796 min
 Delta R.T.: 0.000 min
 Response: 587373
 Conc: 496.00 ng/ml

Instrument :
 ECD_P
 ClientSampleId :
 18-B12(110-114)MSD



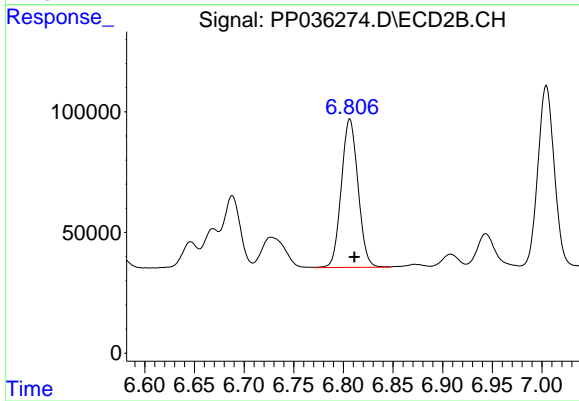
#7 AR-1016-5

R.T.: 5.708 min
 Delta R.T.: -0.004 min
 Response: 381726
 Conc: 557.15 ng/ml



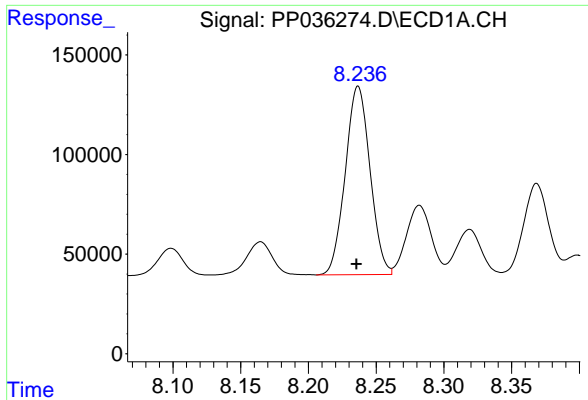
#31 AR-1260-1

R.T.: 7.971 min
 Delta R.T.: 0.000 min
 Response: 1036524
 Conc: 511.68 ng/ml



#31 AR-1260-1

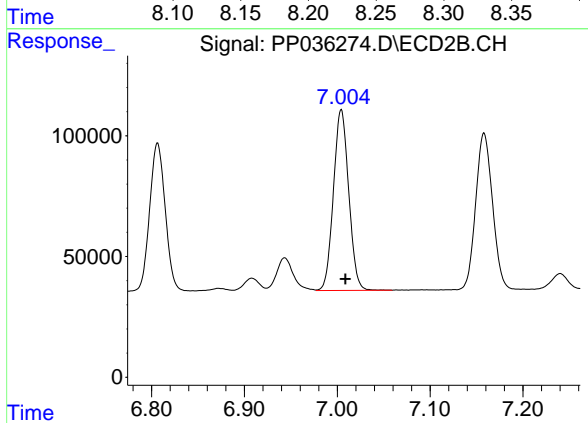
R.T.: 6.806 min
 Delta R.T.: -0.005 min
 Response: 719658
 Conc: 576.79 ng/ml



#32 AR-1260-2

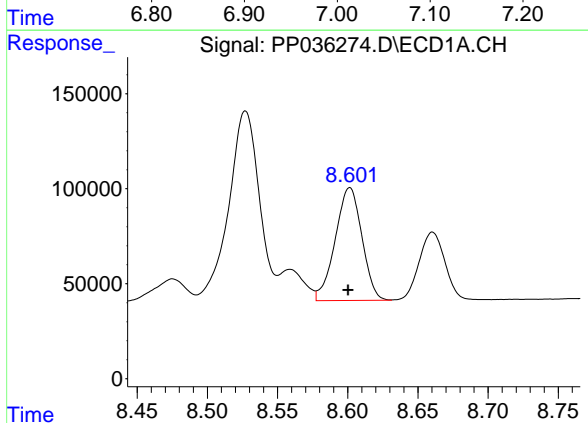
R.T.: 8.237 min
Delta R.T.: 0.001 min
Response: 1203441
Conc: 492.61 ng/ml

Instrument :
ECD_P
ClientSampleId :
18-B12(110-114)MSD



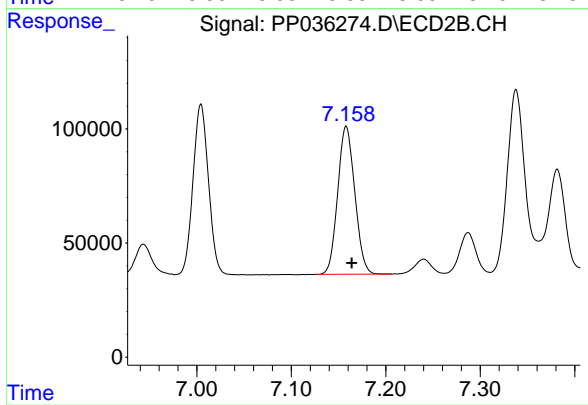
#32 AR-1260-2

R.T.: 7.004 min
Delta R.T.: -0.005 min
Response: 856814
Conc: 568.57 ng/ml



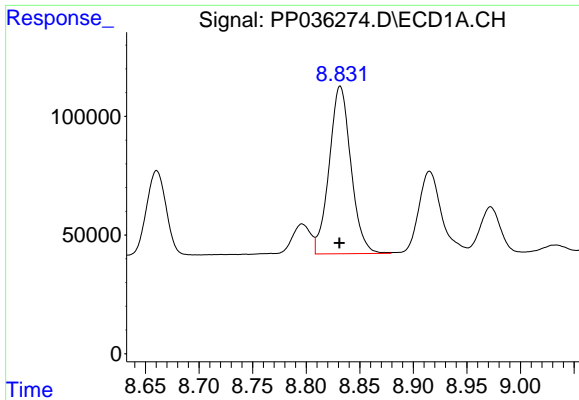
#33 AR-1260-3

R.T.: 8.601 min
Delta R.T.: 0.001 min
Response: 786830
Conc: 423.70 ng/ml



#33 AR-1260-3

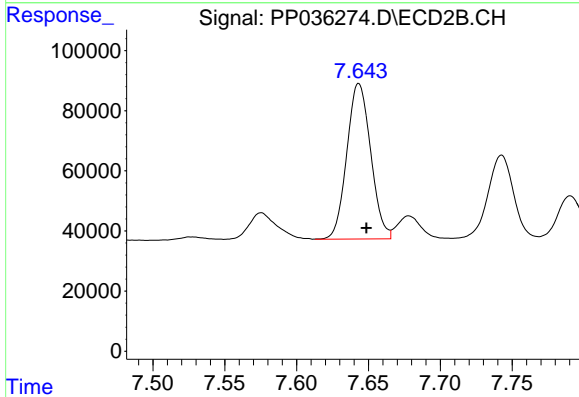
R.T.: 7.158 min
Delta R.T.: -0.006 min
Response: 814241
Conc: 579.36 ng/ml



#34 AR-1260-4

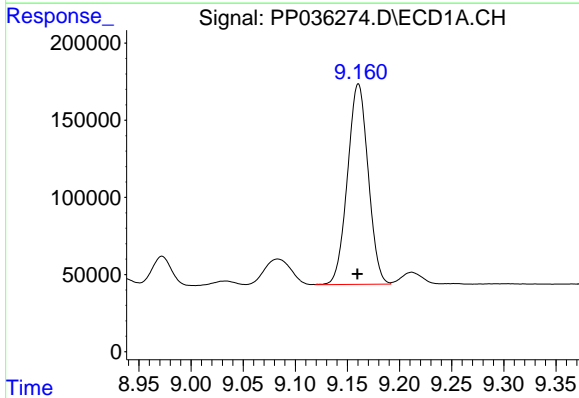
R.T.: 8.832 min
 Delta R.T.: 0.000 min
 Response: 995365
 Conc: 445.74 ng/ml

Instrument :
 ECD_P
 ClientSampleId :
 18-B12(110-114)MSD



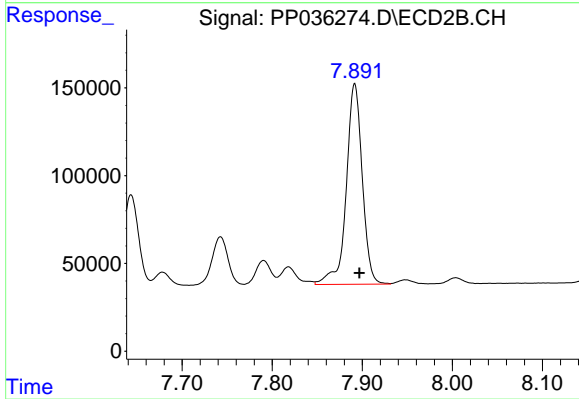
#34 AR-1260-4

R.T.: 7.643 min
 Delta R.T.: -0.005 min
 Response: 598656
 Conc: 512.06 ng/ml



#35 AR-1260-5

R.T.: 9.161 min
 Delta R.T.: 0.000 min
 Response: 1795249
 Conc: 420.46 ng/ml



#35 AR-1260-5

R.T.: 7.892 min
 Delta R.T.: -0.005 min
 Response: 1412208
 Conc: 510.16 ng/ml