

Data Path : Z:\pestpcbsrv\HPCHEM1\ECD_P\Data\PP060721\
 Data File : PP036275.D
 Signal(s) : Signal #1: ECD1A.CH Signal #2: ECD2B.CH
 Acq On : 07 Jun 2021 20:44
 Operator : DD\AJ
 Sample : M2613-08
 Misc :
 ALS Vial : 35 Sample Multiplier: 1

Instrument :
 ECD_P
 ClientSampleId :
 18-B12(114-118)

Integration File signal 1: autoint1.e
 Integration File signal 2: autoint2.e
 Quant Time: Jun 08 02:13:42 2021
 Quant Method : Z:\pestpcbsrv\HPCHEM1\ECD_P\methods\PP052521.M
 Quant Title : GC EXTRACTABLES
 QLast Update : Wed May 26 00:48:29 2021
 Response via : Initial Calibration
 Integrator: ChemStation 6890 Scale Mode: Small noise peaks clipped

Volume Inj. : 2 µl
 Signal #1 Phase : ZB-MR1 Signal #2 Phase: ZB-MR2
 Signal #1 Info : 30Mx0.32mmx 0.50µ Signal #2 Info : 30M x 0.32mm x 0.25µm

Compound	RT#1	RT#2	Resp#1	Resp#2	ng/ml	ng/ml

System Monitoring Compounds						
1) SA Tetrachlo...	4.965	3.961	1027759	681931	23.091	24.434
2) SA Decachlor...	10.993	9.266	998478	612014	23.363	26.677

Target Compounds

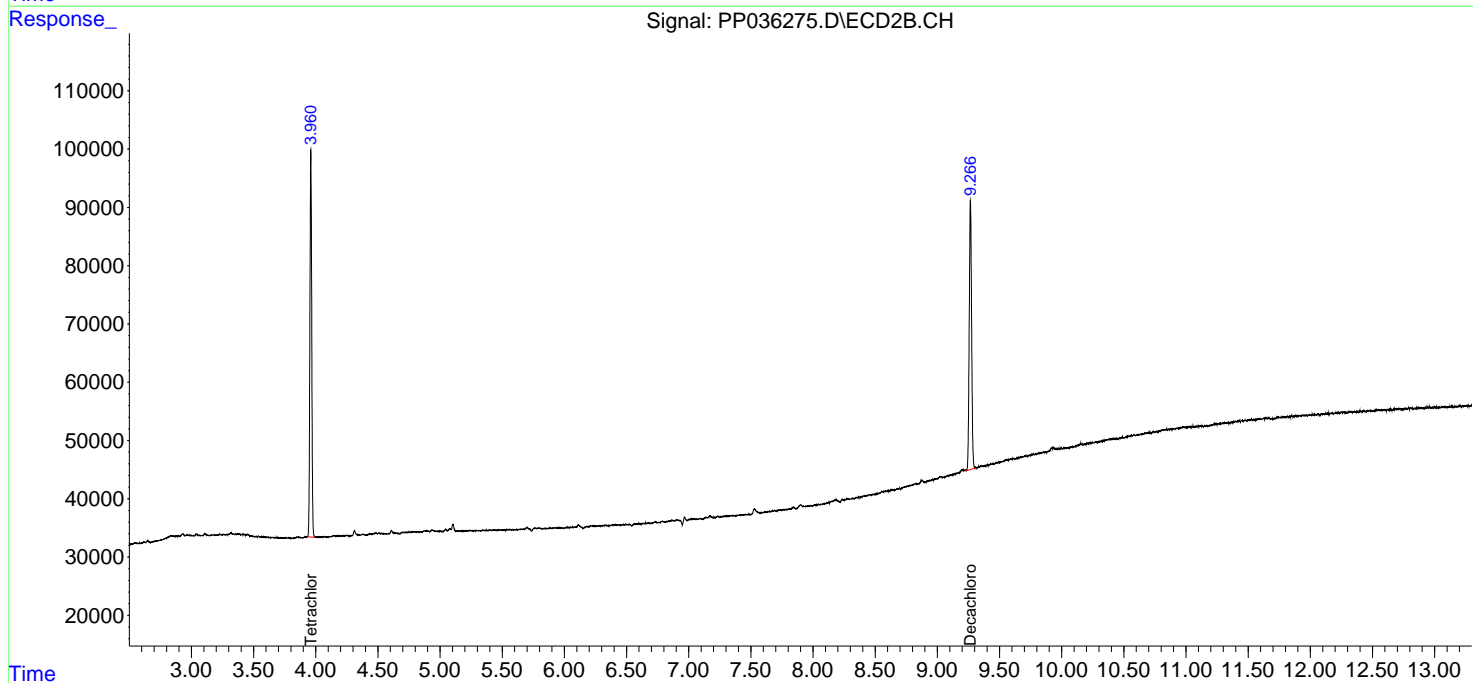
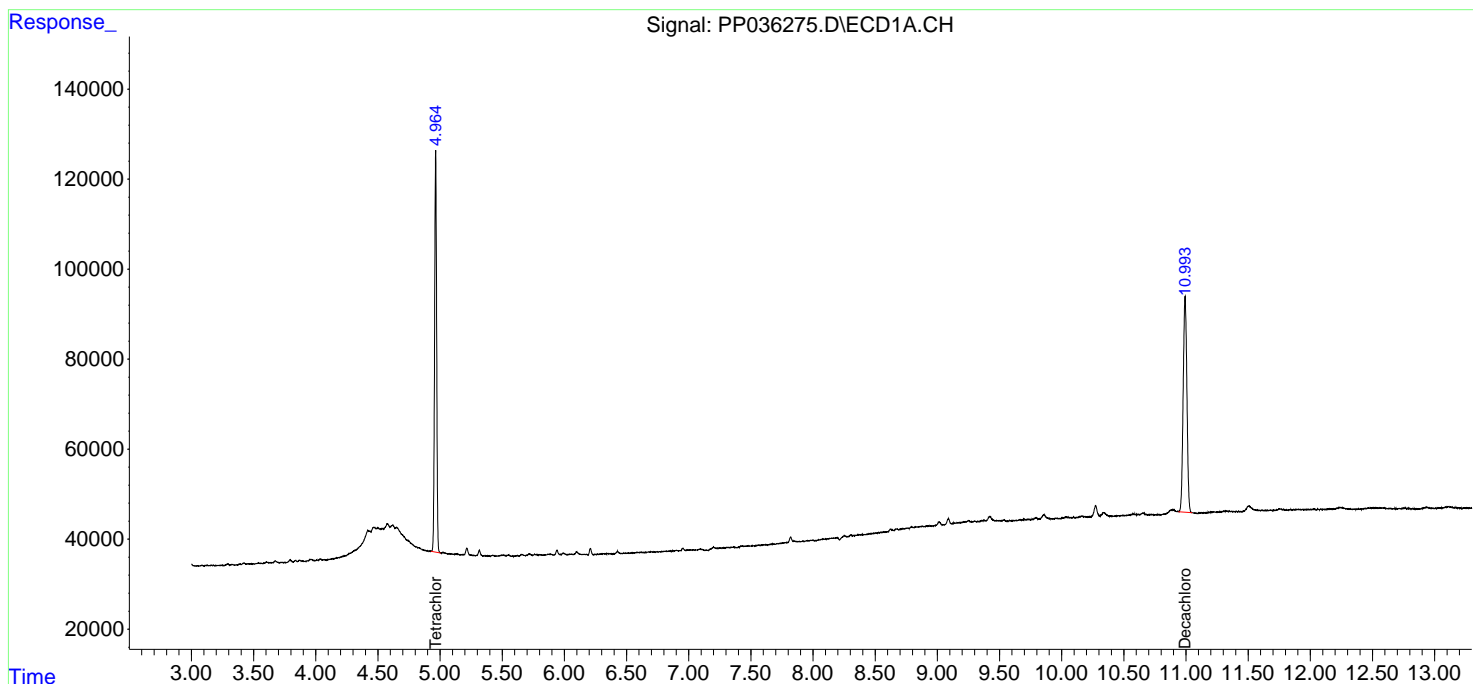
(f)=RT Delta > 1/2 Window (#)=Amounts differ by > 25% (m)=manual int.

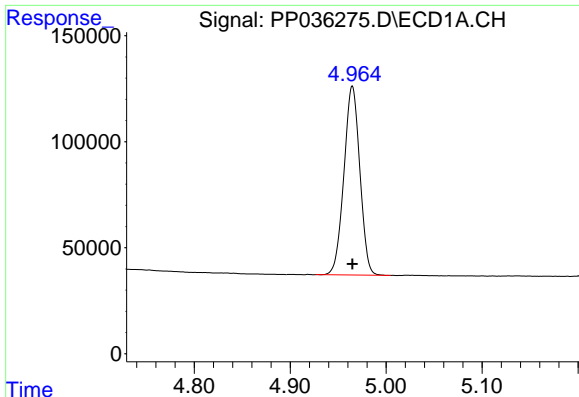
Data Path : Z:\pestpcbsrv\HPCHEM1\ECD_P\Data\PP060721\
 Data File : PP036275.D
 Signal(s) : Signal #1: ECD1A.CH Signal #2: ECD2B.CH
 Acq On : 07 Jun 2021 20:44
 Operator : DD\AJ
 Sample : M2613-08
 Misc :
 ALS Vial : 35 Sample Multiplier: 1

Instrument :
 ECD_P
 ClientSampleId :
 18-B12(114-118)

Integration File signal 1: autoint1.e
 Integration File signal 2: autoint2.e
 Quant Time: Jun 08 02:13:42 2021
 Quant Method : Z:\pestpcbsrv\HPCHEM1\ECD_P\methods\PP052521.M
 Quant Title : GC EXTRACTABLES
 QLast Update : Wed May 26 00:48:29 2021
 Response via : Initial Calibration
 Integrator: ChemStation 6890 Scale Mode: Small noise peaks clipped

Volume Inj. : 2 µl
 Signal #1 Phase : ZB-MR1 Signal #2 Phase: ZB-MR2
 Signal #1 Info : 30Mx0.32mmx 0.50µ Signal #2 Info : 30M x 0.32mm x 0.25µm

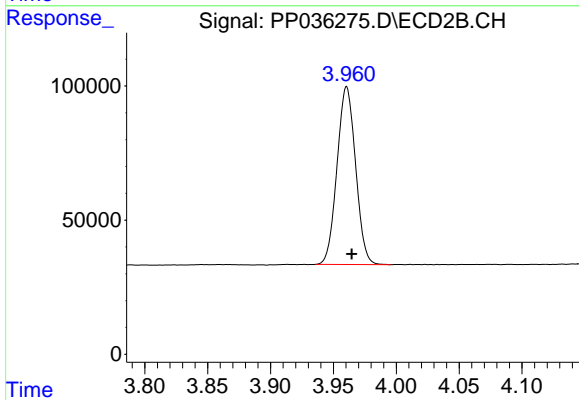




#1 Tetrachloro-m-xylene

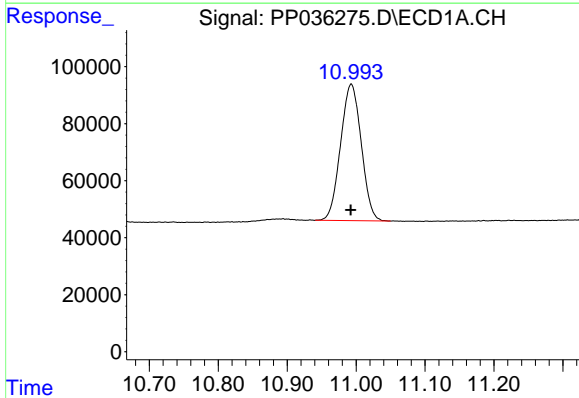
R.T.: 4.965 min
 Delta R.T.: 0.000 min
 Response: 1027759
 Conc: 23.09 ng/ml

Instrument :
 ECD_P
 ClientSampleId :
 18-B12(114-118)



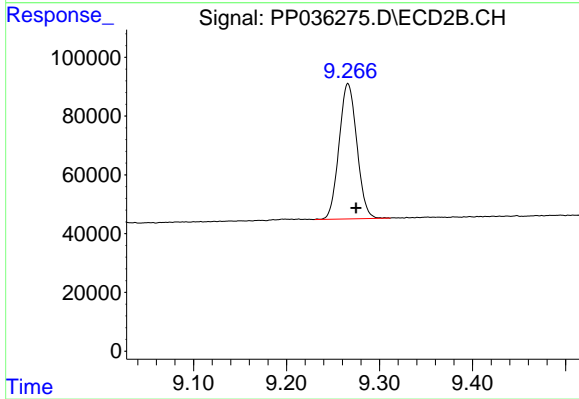
#1 Tetrachloro-m-xylene

R.T.: 3.961 min
 Delta R.T.: -0.004 min
 Response: 681931
 Conc: 24.43 ng/ml



#2 Decachlorobiphenyl

R.T.: 10.993 min
 Delta R.T.: 0.000 min
 Response: 998478
 Conc: 23.36 ng/ml



#2 Decachlorobiphenyl

R.T.: 9.266 min
 Delta R.T.: -0.008 min
 Response: 612014
 Conc: 26.68 ng/ml