

Data Path : Z:\pestpcbsrv\HPCHEM1\ECD_P\Data\PP060722\
 Data File : PP048480.D
 Signal(s) : Signal #1: ECD1A.ch Signal #2: ECD2B.ch
 Acq On : 06 Jun 2022 23:42
 Operator : YP\AJ
 Sample : AR1254ICC750
 Misc :
 ALS Vial : 21 Sample Multiplier: 1

Instrument :
 ECD_P
ClientSampleId :
 AR1254ICC750

Integration File signal 1: autoint1.e
 Integration File signal 2: autoint2.e
 Quant Time: Jun 07 10:02:07 2022
 Quant Method : Z:\pestpcbsrv\HPCHEM1\ECD_P\methods\PP060722.M
 Quant Title : GC EXTRACTABLES
 QLast Update : Tue Jun 07 10:02:00 2022
 Response via : Initial Calibration
 Integrator: ChemStation

Volume Inj. : 2 µl
 Signal #1 Phase : ZB-MR1 Signal #2 Phase: ZB-MR2
 Signal #1 Info : 30Mx0.32mmx 0.50µ Signal #2 Info : 30M x 0.32mm x 0.25µm

Compound	RT#1	RT#2	Resp#1	Resp#2	ng/ml	ng/ml

System Monitoring Compounds						
1) SA Tetrachlo...	4.036	3.205	183.6E6	149.6E6	74.776	74.920
2) SA Decachlor...	10.385	8.626	148.7E6	90574180	75.154	74.865
Target Compounds						
26) L6 AR-1254-1	6.265	5.227	65804414	71018741	750.732	747.940
27) L6 AR-1254-2	6.508	5.387	99086845	61421657	747.338	746.648
28) L6 AR-1254-3	6.915	5.823	103.6E6	98049276	749.708	746.936
29) L6 AR-1254-4	7.234	6.073	77350848	61390193	747.527	746.041
30) L6 AR-1254-5	7.699	6.528	84850060	86999413	747.300	747.089

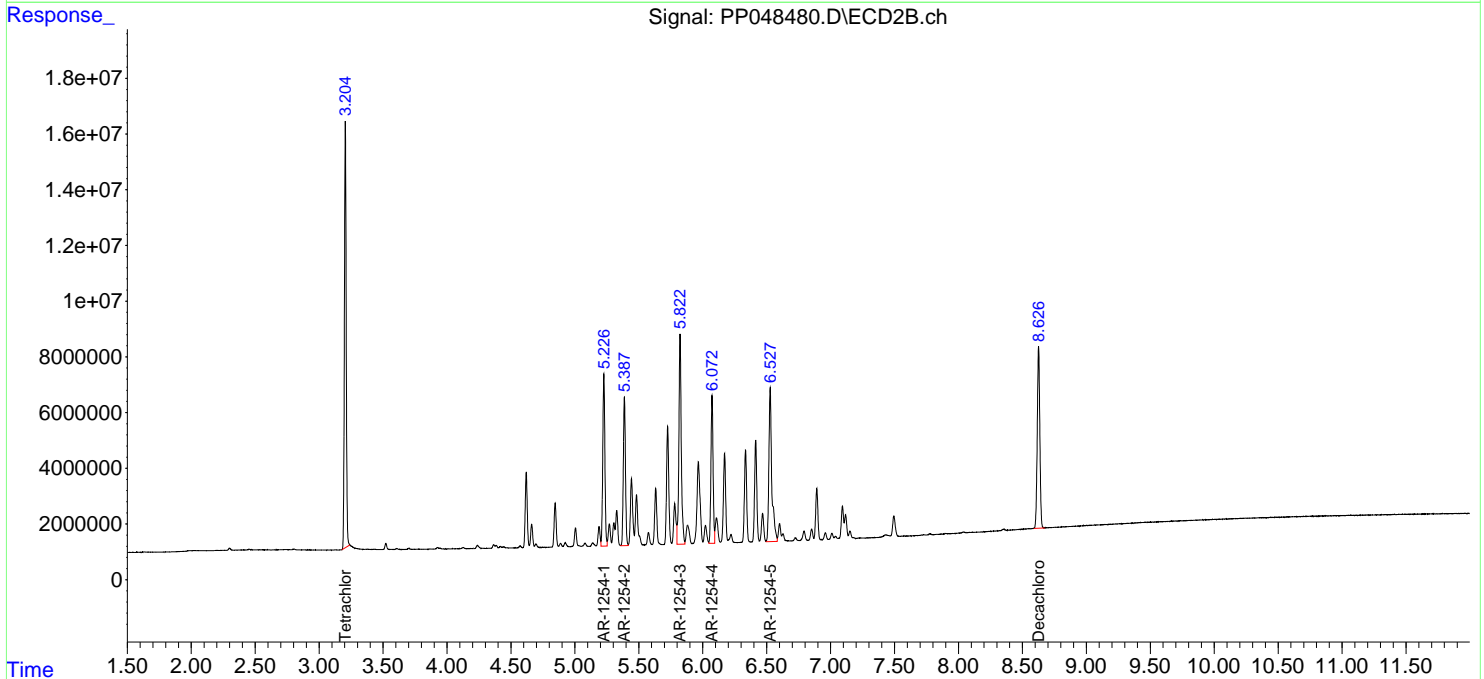
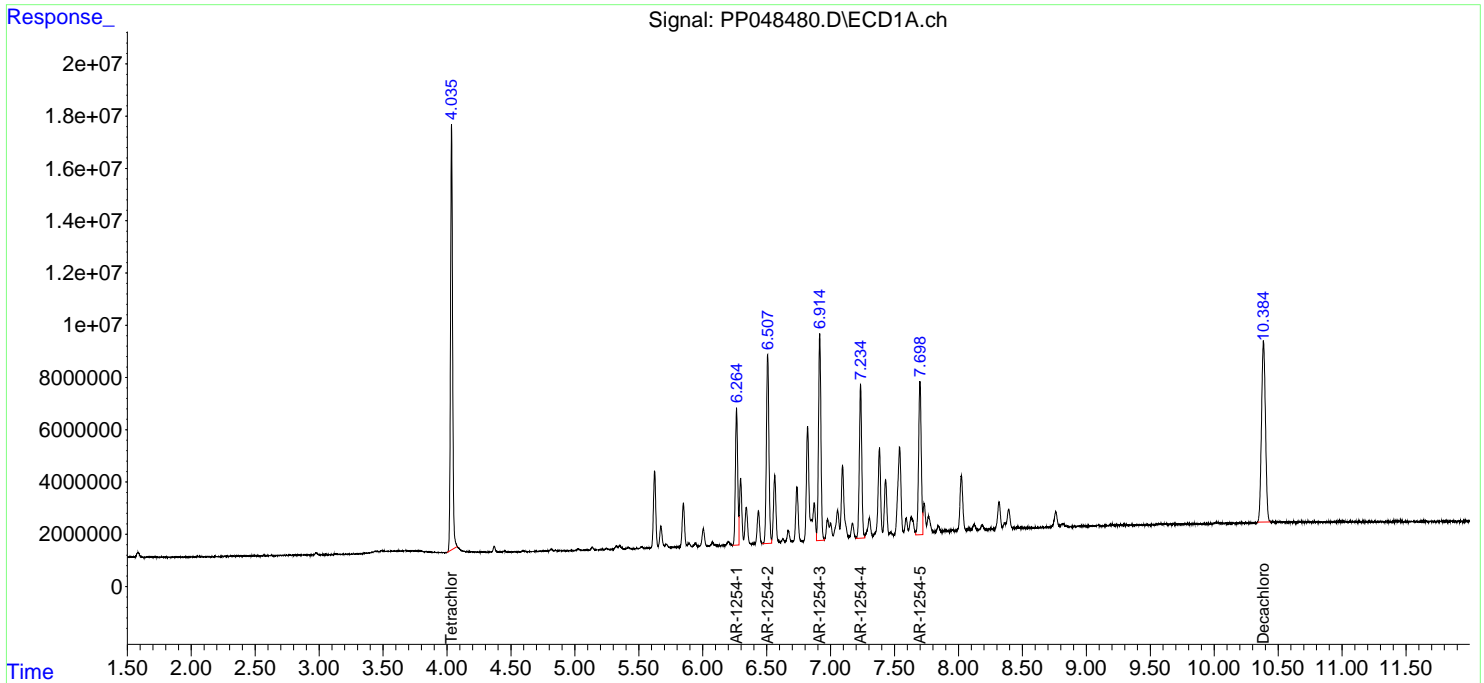
(f)=RT Delta > 1/2 Window (#)=Amounts differ by > 25% (m)=manual int.

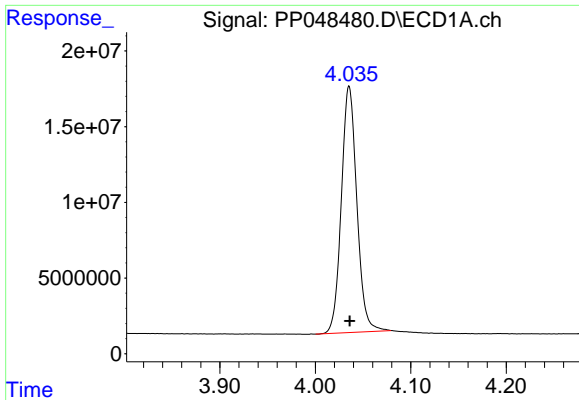
Data Path : Z:\pestpcbsrv\HPCHEM1\ECD_P\Data\PP060722\
 Data File : PP048480.D
 Signal(s) : Signal #1: ECD1A.ch Signal #2: ECD2B.ch
 Acq On : 06 Jun 2022 23:42
 Operator : YP\AJ
 Sample : AR1254ICC750
 Misc :
 ALS Vial : 21 Sample Multiplier: 1

Instrument :
 ECD_P
 ClientSampleId :
 AR1254ICC750

Integration File signal 1: autoint1.e
 Integration File signal 2: autoint2.e
 Quant Time: Jun 07 10:02:07 2022
 Quant Method : Z:\pestpcbsrv\HPCHEM1\ECD_P\methods\PP060722.M
 Quant Title : GC EXTRACTABLES
 QLast Update : Tue Jun 07 10:02:00 2022
 Response via : Initial Calibration
 Integrator: ChemStation

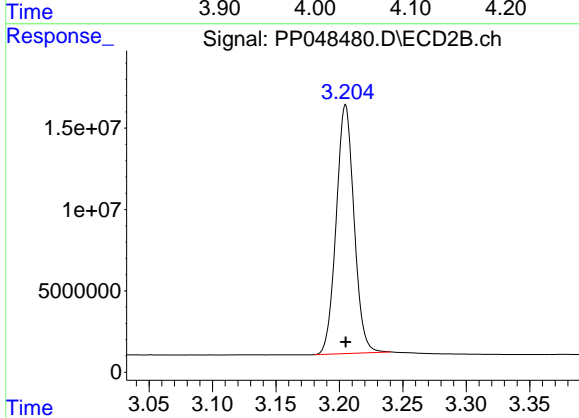
Volume Inj. : 2 µl
 Signal #1 Phase : ZB-MR1 Signal #2 Phase: ZB-MR2
 Signal #1 Info : 30Mx0.32mmx 0.50µ Signal #2 Info : 30M x 0.32mm x 0.25µm



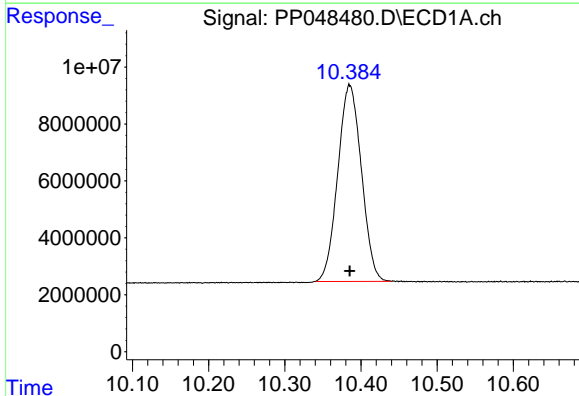


#1 Tetrachloro-m-xylene
 R.T.: 4.036 min
 Delta R.T.: 0.000 min
 Response: 183555736
 Conc: 74.78 ng/ml

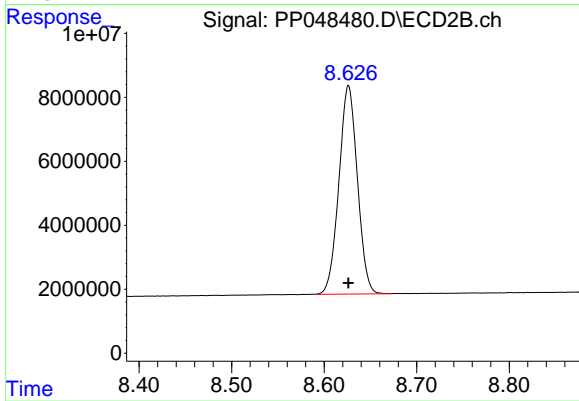
Instrument :
 ECD_P
 ClientSampleId :
 AR1254ICC750



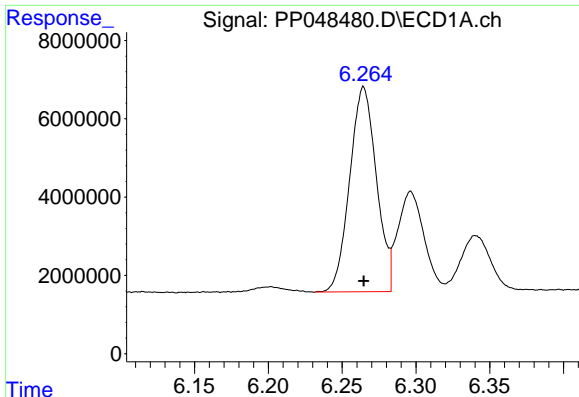
#1 Tetrachloro-m-xylene
 R.T.: 3.205 min
 Delta R.T.: 0.000 min
 Response: 149572711
 Conc: 74.92 ng/ml



#2 Decachlorobiphenyl
 R.T.: 10.385 min
 Delta R.T.: 0.000 min
 Response: 148712909
 Conc: 75.15 ng/ml



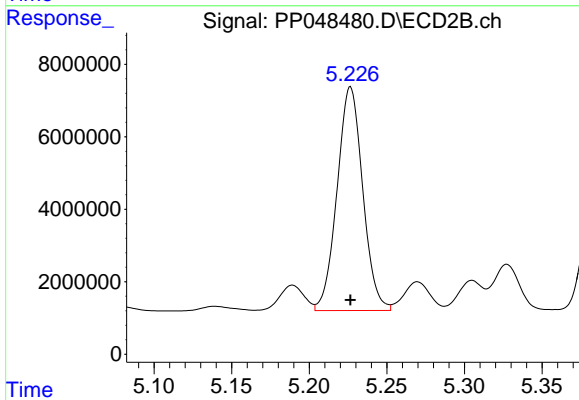
#2 Decachlorobiphenyl
 R.T.: 8.626 min
 Delta R.T.: 0.000 min
 Response: 90574180
 Conc: 74.86 ng/ml



#26 AR-1254-1

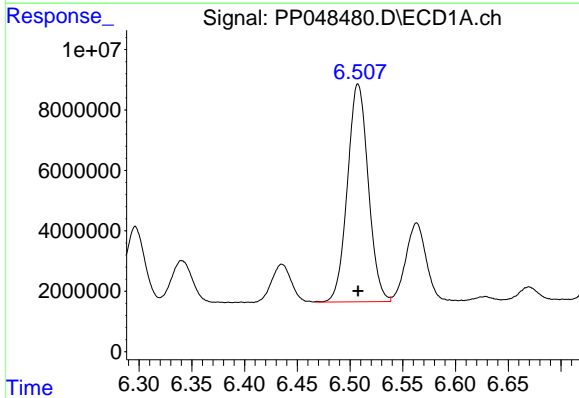
R.T.: 6.265 min
 Delta R.T.: 0.000 min
 Response: 65804414
 Conc: 750.73 ng/ml

Instrument :
 ECD_P
 ClientSampleId :
 AR1254ICC750



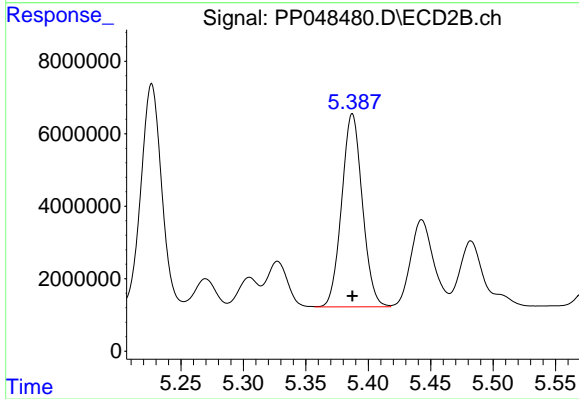
#26 AR-1254-1

R.T.: 5.227 min
 Delta R.T.: 0.000 min
 Response: 71018741
 Conc: 747.94 ng/ml



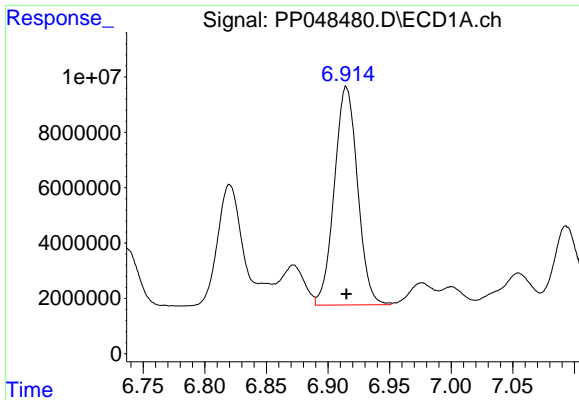
#27 AR-1254-2

R.T.: 6.508 min
 Delta R.T.: 0.000 min
 Response: 99086845
 Conc: 747.34 ng/ml



#27 AR-1254-2

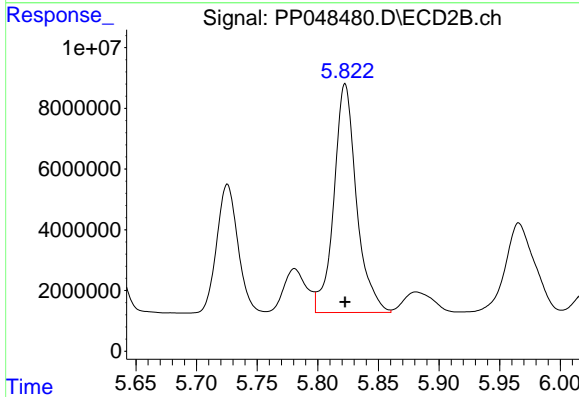
R.T.: 5.387 min
 Delta R.T.: 0.000 min
 Response: 61421657
 Conc: 746.65 ng/ml



#28 AR-1254-3

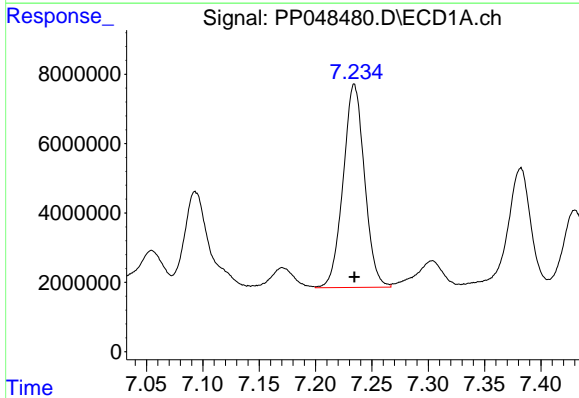
R.T.: 6.915 min
 Delta R.T.: 0.000 min
 Response: 103557851
 Conc: 749.71 ng/ml

Instrument :
 ECD_P
 ClientSampleId :
 AR1254ICC750



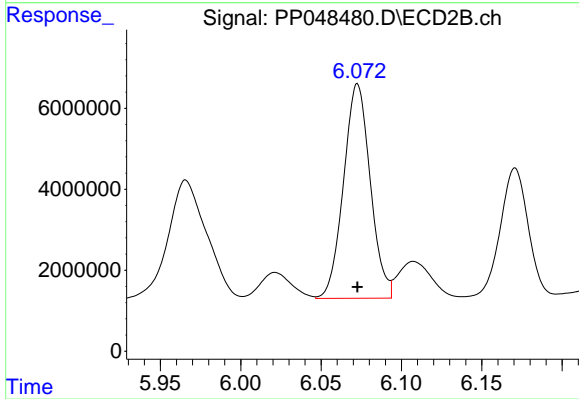
#28 AR-1254-3

R.T.: 5.823 min
 Delta R.T.: 0.000 min
 Response: 98049276
 Conc: 746.94 ng/ml



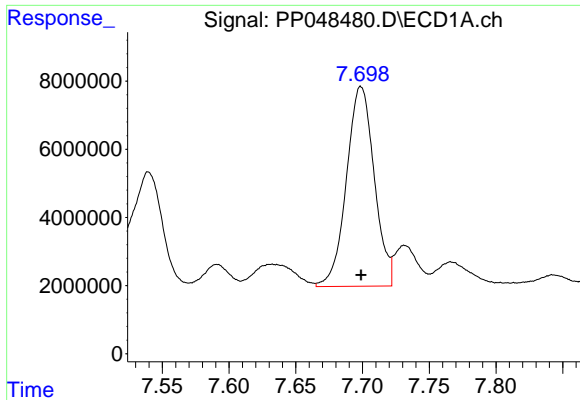
#29 AR-1254-4

R.T.: 7.234 min
 Delta R.T.: 0.000 min
 Response: 77350848
 Conc: 747.53 ng/ml



#29 AR-1254-4

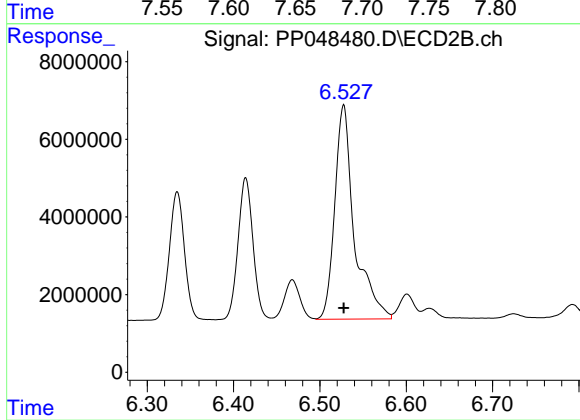
R.T.: 6.073 min
 Delta R.T.: 0.000 min
 Response: 61390193
 Conc: 746.04 ng/ml



#30 AR-1254-5

R.T.: 7.699 min
Delta R.T.: 0.000 min
Response: 84850060
Conc: 747.30 ng/ml

Instrument :
ECD_P
ClientSampleId :
AR1254ICC750



#30 AR-1254-5

R.T.: 6.528 min
Delta R.T.: 0.000 min
Response: 86999413
Conc: 747.09 ng/ml