

Data Path : Z:\pestpcbsrv\HPCHEM1\ECD_P\Data\PP060723\
 Data File : PP058275.D
 Signal(s) : Signal #1: ECD1A.ch Signal #2: ECD2B.ch
 Acq On : 06 Jun 2023 18:05
 Operator : YP\AJ
 Sample : 03039-06MS
 Misc :
 ALS Vial : 18 Sample Multiplier: 1

Instrument :
 ECD_P
 ClientSampleId :
 WC31MS

Integration File signal 1: autoint1.e
 Integration File signal 2: autoint2.e
 Quant Time: Jun 06 21:15:56 2023
 Quant Method : Z:\pestpcbsrv\HPCHEM1\ECD_P\methods\PP060623.M
 Quant Title : GC EXTRACTABLES
 QLast Update : Tue Jun 06 04:59:28 2023
 Response via : Initial Calibration
 Integrator: ChemStation

Volume Inj. : 2 µl
 Signal #1 Phase : ZB-MR1 Signal #2 Phase: ZB-MR2
 Signal #1 Info : 30Mx0.32mmx 0.50µ Signal #2 Info : 30M x 0.32mm x 0.25µm

Compound	RT#1	RT#2	Resp#1	Resp#2	ng/ml	ng/ml

System Monitoring Compounds						
1) SA Tetrachlo...	4.378	3.616	62539352	55548717	27.326	25.744
2) SA Decachlor...	10.203	8.677	27372915	39991783	24.505	24.256
Target Compounds						
3) L1 AR-1016-1	5.558	4.713	34331120	36991137	539.358	527.307
4) L1 AR-1016-2	5.581	4.732	50788153	52125027	550.087	529.568
5) L1 AR-1016-3	5.643	4.911	31325246	29709555	533.616	528.454
6) L1 AR-1016-4	5.743	4.952	24998195	22988020	524.902	514.116
7) L1 AR-1016-5	6.041	5.168	26312067	30016444	519.826	521.271
31) L7 AR-1260-1	7.180	6.212	40676093	53010291	485.343	486.997
32) L7 AR-1260-2	7.439	6.401	43592853	62302261	522.628	483.676
33) L7 AR-1260-3	7.802	6.556	29331555	59560307	510.946	482.954
34) L7 AR-1260-4	8.030	7.032	34889703	42770230	516.292	472.457
35) L7 AR-1260-5	8.353	7.275	56806294	97225820	529.588	479.345

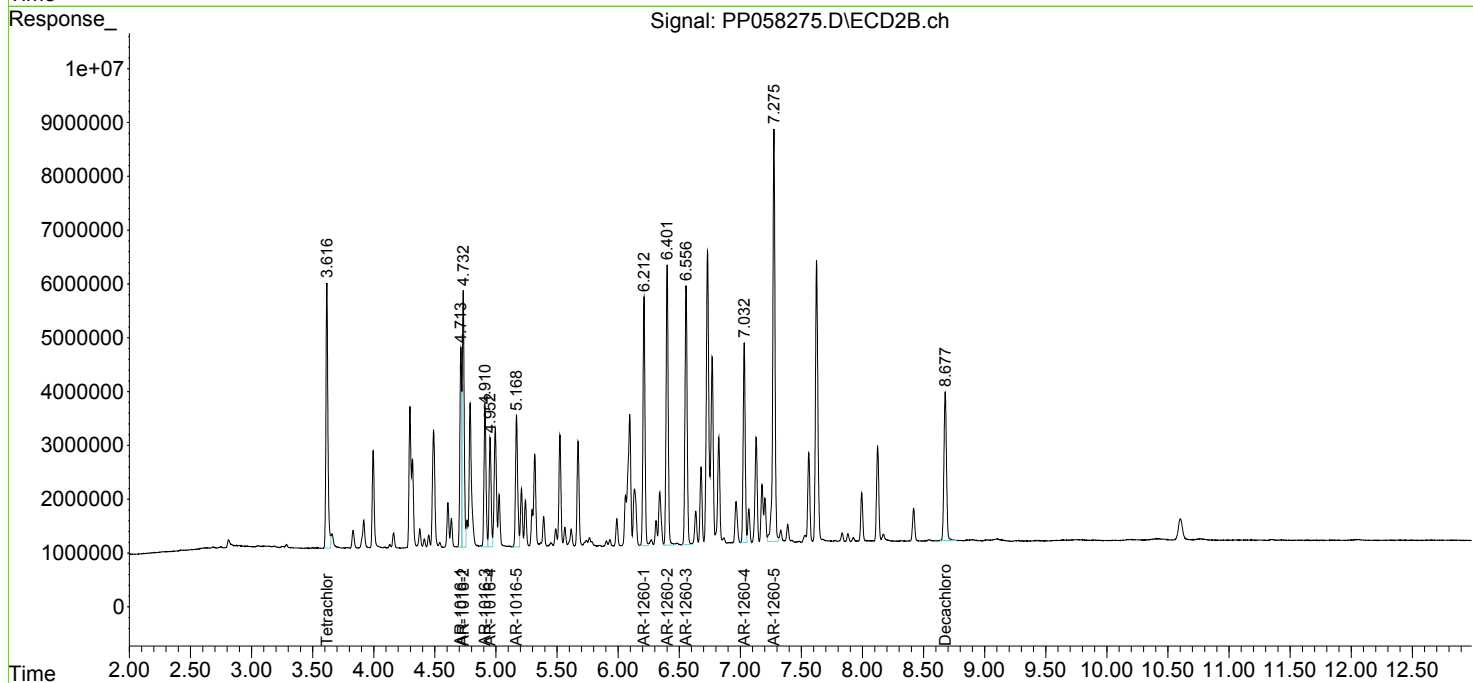
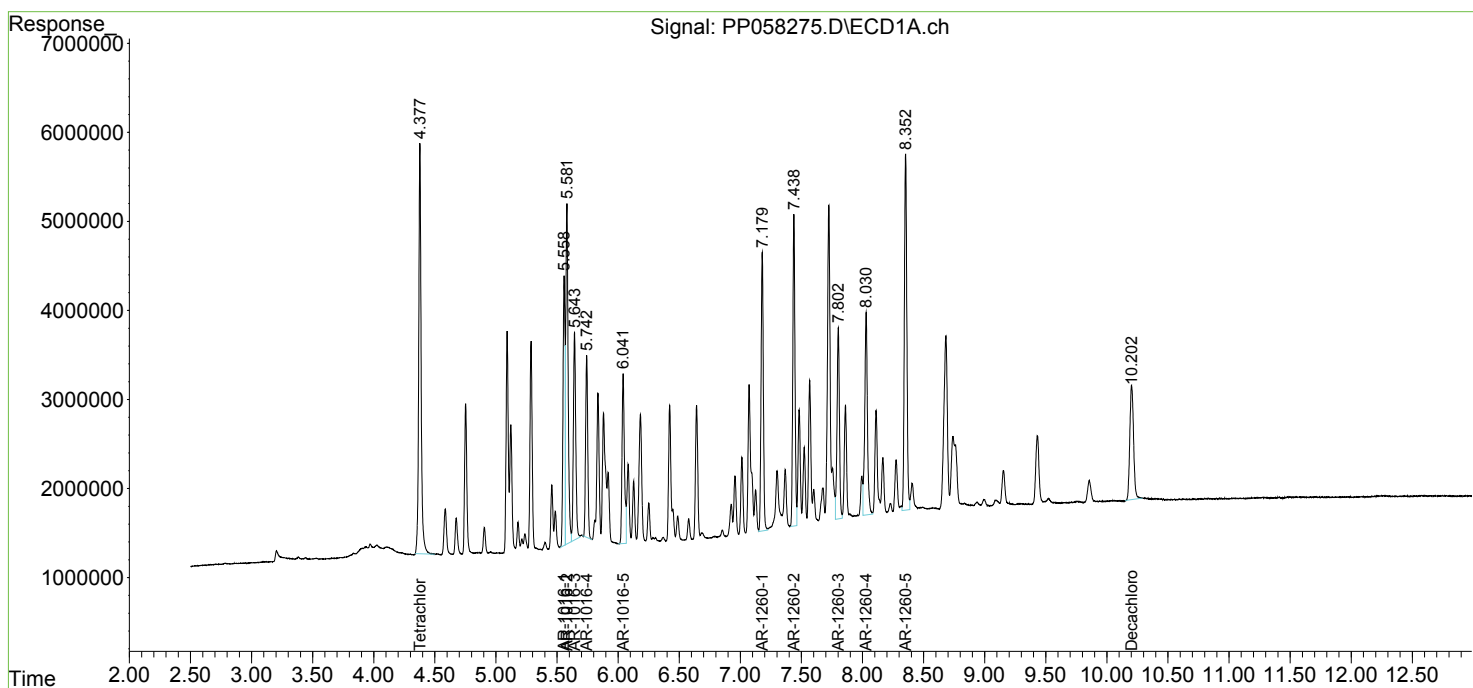
(f)=RT Delta > 1/2 Window (#)=Amounts differ by > 25% (m)=manual int.

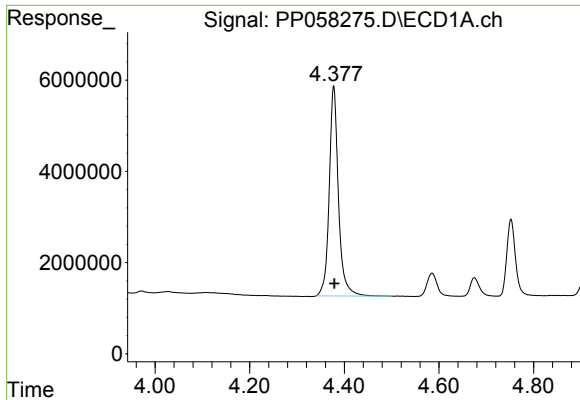
Data Path : Z:\pestpcbsrv\HPCHEM1\ECD_P\Data\PP060723\
 Data File : PP058275.D
 Signal(s) : Signal #1: ECD1A.ch Signal #2: ECD2B.ch
 Acq On : 06 Jun 2023 18:05
 Operator : YP\AJ
 Sample : 03039-06MS
 Misc :
 ALS Vial : 18 Sample Multiplier: 1

Instrument :
 ECD_P
 ClientSampleId :
 WC31MS

Integration File signal 1: autoint1.e
 Integration File signal 2: autoint2.e
 Quant Time: Jun 06 21:15:56 2023
 Quant Method : Z:\pestpcbsrv\HPCHEM1\ECD_P\methods\PP060623.M
 Quant Title : GC EXTRACTABLES
 QLast Update : Tue Jun 06 04:59:28 2023
 Response via : Initial Calibration
 Integrator: ChemStation

Volume Inj. : 2 µl
 Signal #1 Phase : ZB-MR1 Signal #2 Phase: ZB-MR2
 Signal #1 Info : 30Mx0.32mmx 0.50µ Signal #2 Info : 30M x 0.32mm x 0.25µm

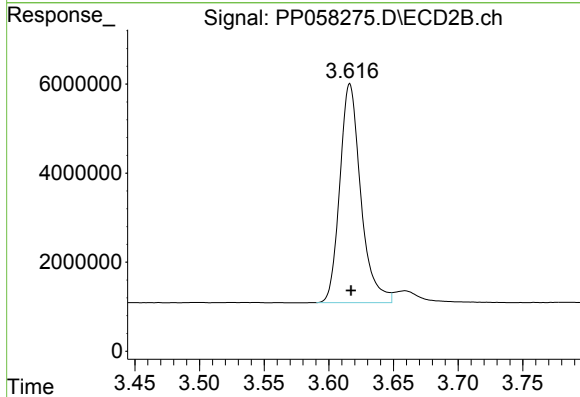




#1 Tetrachloro-m-xylene

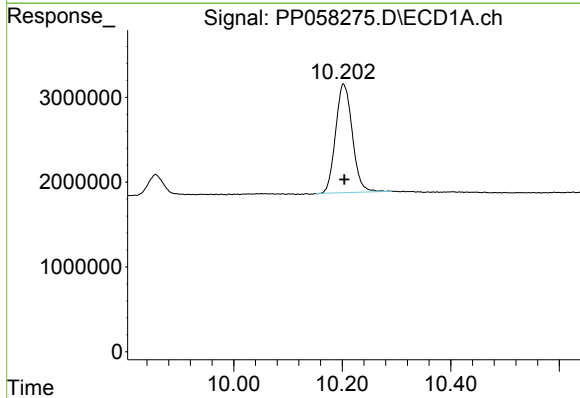
R.T.: 4.378 min
 Delta R.T.: -0.001 min
 Response: 62539352
 Conc: 27.33 ng/ml

Instrument :
 ECD_P
 ClientSampleId :
 WC31MS



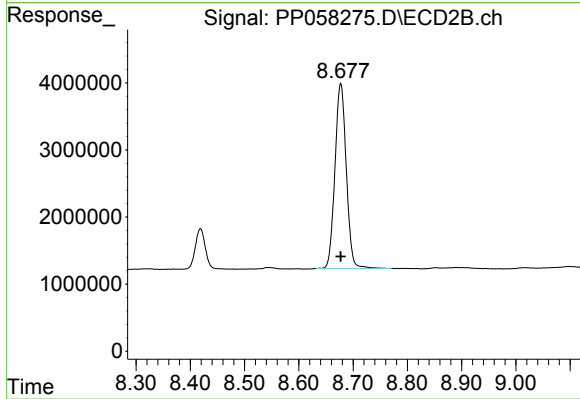
#1 Tetrachloro-m-xylene

R.T.: 3.616 min
 Delta R.T.: -0.001 min
 Response: 55548717
 Conc: 25.74 ng/ml



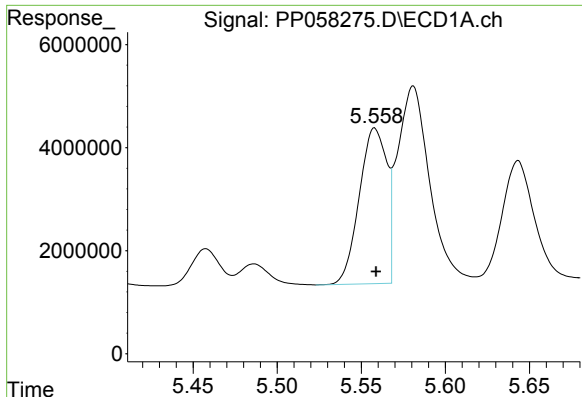
#2 Decachlorobiphenyl

R.T.: 10.203 min
 Delta R.T.: -0.001 min
 Response: 27372915
 Conc: 24.50 ng/ml



#2 Decachlorobiphenyl

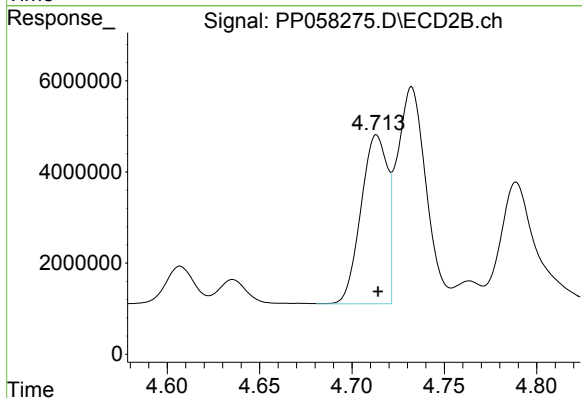
R.T.: 8.677 min
 Delta R.T.: 0.000 min
 Response: 39991783
 Conc: 24.26 ng/ml



#3 AR-1016-1

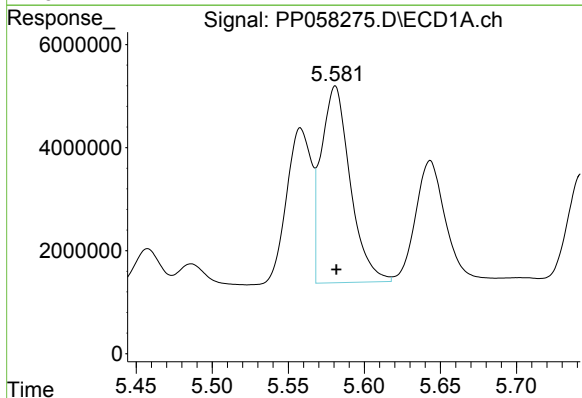
R.T.: 5.558 min
 Delta R.T.: 0.000 min
 Response: 34331120
 Conc: 539.36 ng/ml

Instrument :
 ECD_P
 ClientSampleId :
 WC31MS



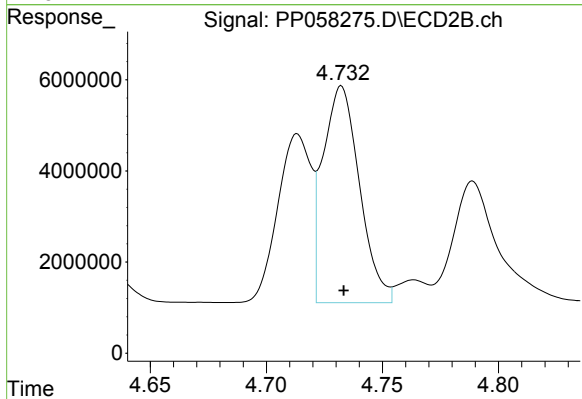
#3 AR-1016-1

R.T.: 4.713 min
 Delta R.T.: 0.000 min
 Response: 36991137
 Conc: 527.31 ng/ml



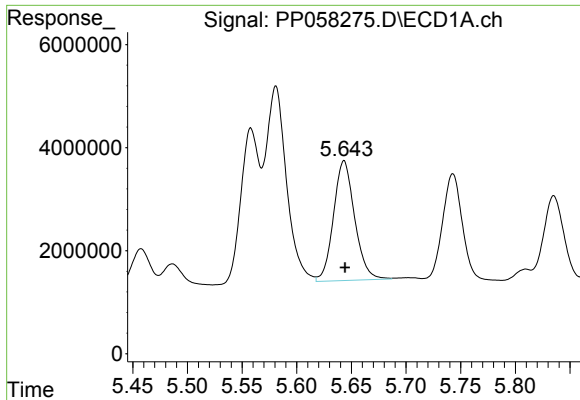
#4 AR-1016-2

R.T.: 5.581 min
 Delta R.T.: 0.000 min
 Response: 50788153
 Conc: 550.09 ng/ml



#4 AR-1016-2

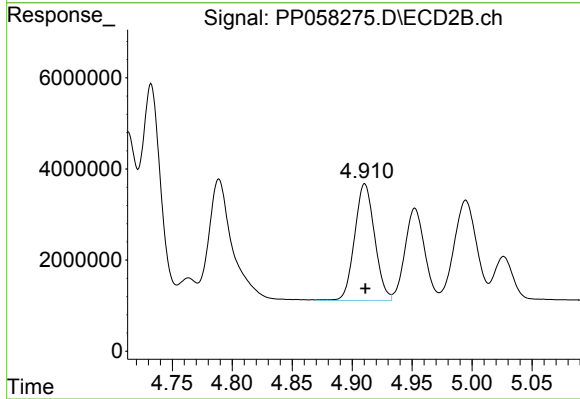
R.T.: 4.732 min
 Delta R.T.: 0.000 min
 Response: 52125027
 Conc: 529.57 ng/ml



#5 AR-1016-3

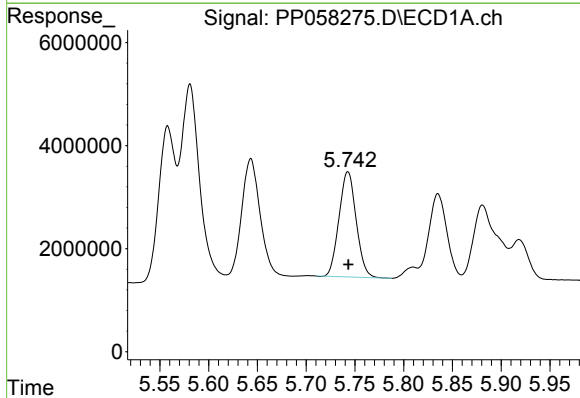
R.T.: 5.643 min
 Delta R.T.: -0.001 min
 Response: 31325246
 Conc: 533.62 ng/ml

Instrument :
 ECD_P
 ClientSampleId :
 WC31MS



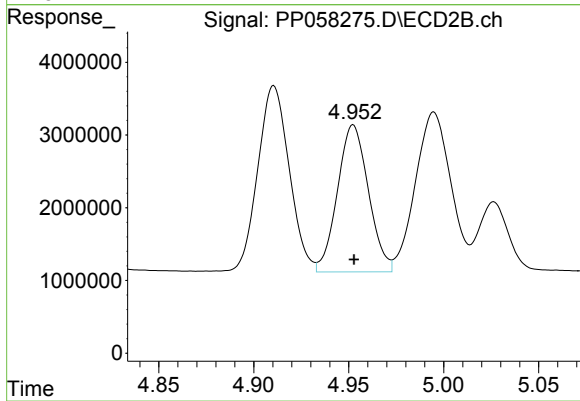
#5 AR-1016-3

R.T.: 4.911 min
 Delta R.T.: 0.000 min
 Response: 29709555
 Conc: 528.45 ng/ml



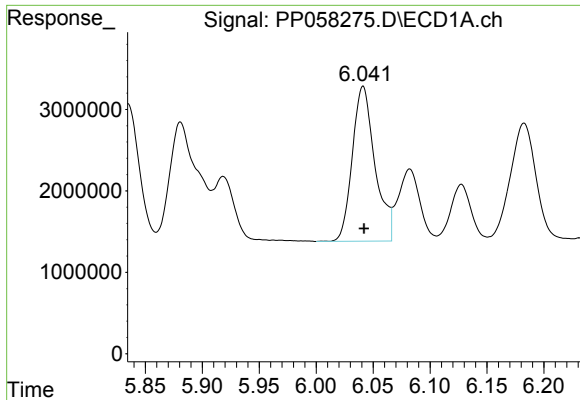
#6 AR-1016-4

R.T.: 5.743 min
 Delta R.T.: 0.000 min
 Response: 24998195
 Conc: 524.90 ng/ml



#6 AR-1016-4

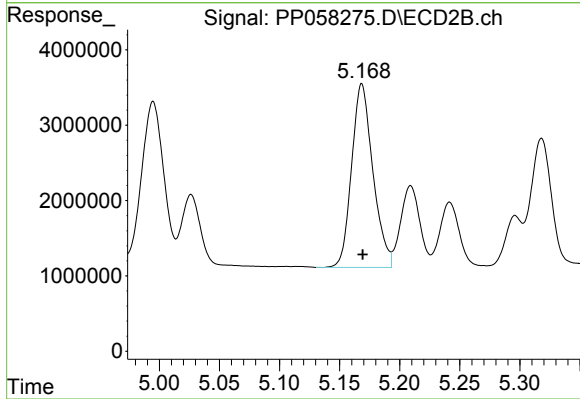
R.T.: 4.952 min
 Delta R.T.: 0.000 min
 Response: 22988020
 Conc: 514.12 ng/ml



#7 AR-1016-5

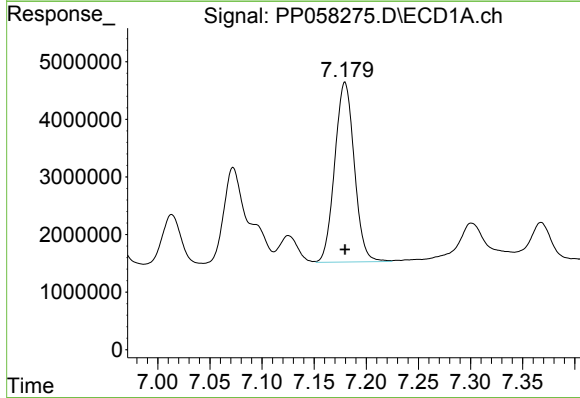
R.T.: 6.041 min
 Delta R.T.: 0.000 min
 Response: 26312067
 Conc: 519.83 ng/ml

Instrument :
 ECD_P
 ClientSampleId :
 WC31MS



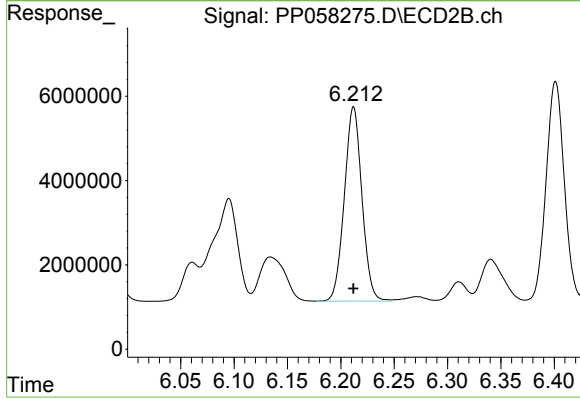
#7 AR-1016-5

R.T.: 5.168 min
 Delta R.T.: 0.000 min
 Response: 30016444
 Conc: 521.27 ng/ml



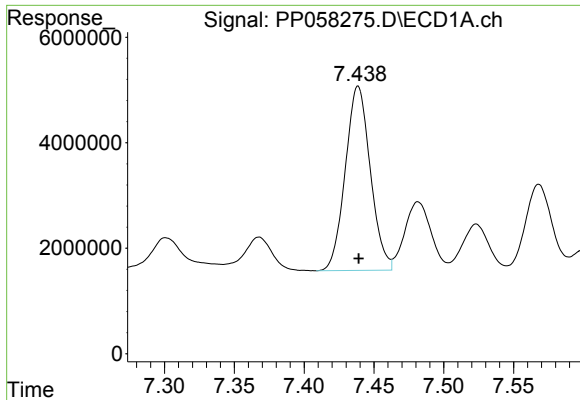
#31 AR-1260-1

R.T.: 7.180 min
 Delta R.T.: 0.000 min
 Response: 40676093
 Conc: 485.34 ng/ml



#31 AR-1260-1

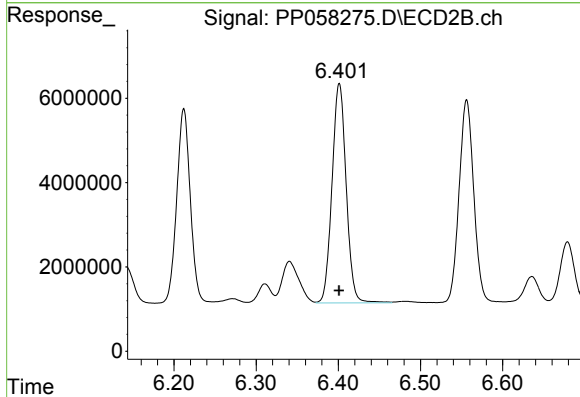
R.T.: 6.212 min
 Delta R.T.: 0.000 min
 Response: 53010291
 Conc: 487.00 ng/ml



#32 AR-1260-2

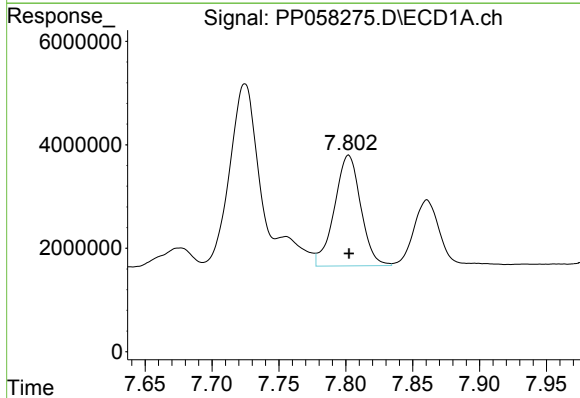
R.T.: 7.439 min
 Delta R.T.: 0.000 min
 Response: 43592853
 Conc: 522.63 ng/ml

Instrument :
 ECD_P
 ClientSampleId :
 WC31MS



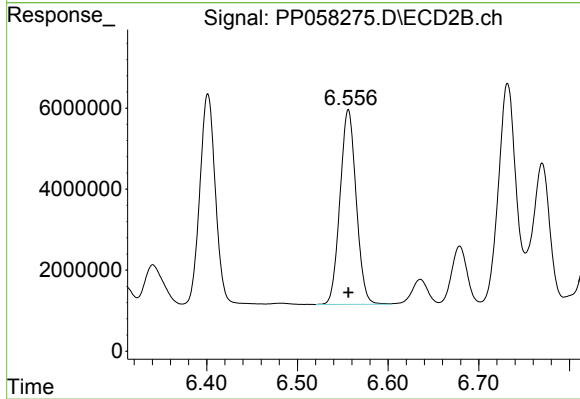
#32 AR-1260-2

R.T.: 6.401 min
 Delta R.T.: 0.000 min
 Response: 62302261
 Conc: 483.68 ng/ml



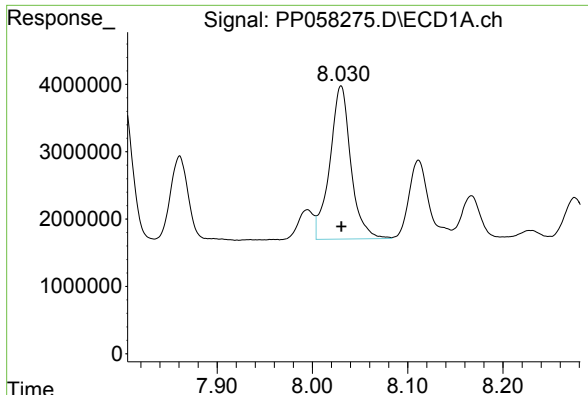
#33 AR-1260-3

R.T.: 7.802 min
 Delta R.T.: 0.000 min
 Response: 29331555
 Conc: 510.95 ng/ml



#33 AR-1260-3

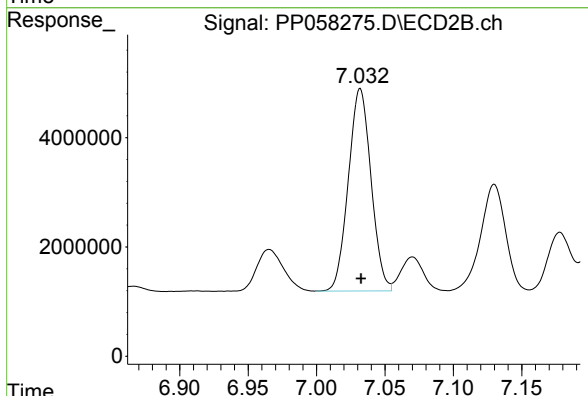
R.T.: 6.556 min
 Delta R.T.: 0.000 min
 Response: 59560307
 Conc: 482.95 ng/ml



#34 AR-1260-4

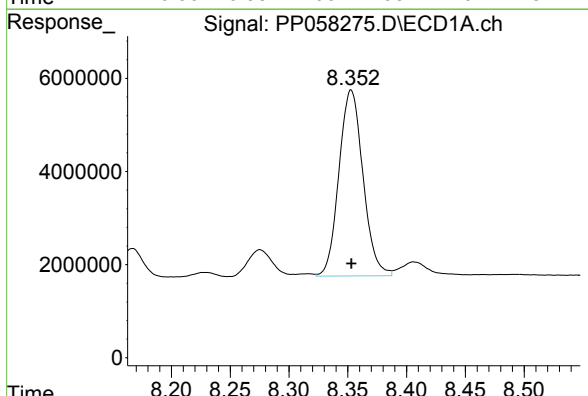
R.T.: 8.030 min
 Delta R.T.: 0.000 min
 Response: 34889703
 Conc: 516.29 ng/ml

Instrument :
 ECD_P
 ClientSampleId :
 WC31MS



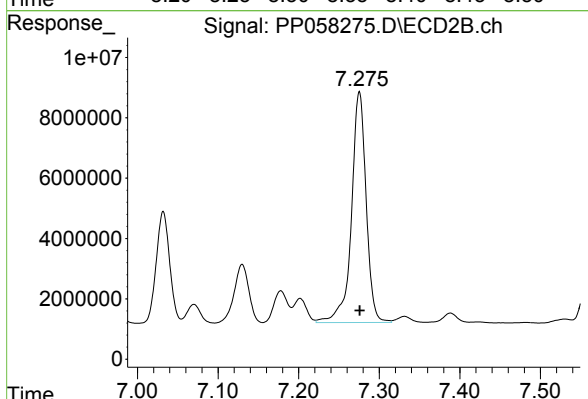
#34 AR-1260-4

R.T.: 7.032 min
 Delta R.T.: 0.000 min
 Response: 42770230
 Conc: 472.46 ng/ml



#35 AR-1260-5

R.T.: 8.353 min
 Delta R.T.: 0.000 min
 Response: 56806294
 Conc: 529.59 ng/ml



#35 AR-1260-5

R.T.: 7.275 min
 Delta R.T.: 0.000 min
 Response: 97225820
 Conc: 479.35 ng/ml