

Data Path : Z:\pestpcbsrv\HPCHEM1\ECD\_P\Data\PP061022\  
 Data File : PP048678.D  
 Signal(s) : Signal #1: ECD1A.ch Signal #2: ECD2B.ch  
 Acq On : 10 Jun 2022 01:30  
 Operator : YP\AJ  
 Sample : N3245-11 10X  
 Misc :  
 ALS Vial : 42 Sample Multiplier: 1

**Instrument :**  
 ECD\_P  
**ClientSampleId :**  
 SOM-2022-40A

**Manual Integrations**  
**APPROVED**

Reviewed By :Yogesh Patel 06/10/2022  
 Supervised By :Ankita Jodhani 06/10/2022

Integration File signal 1: autoint1.e  
 Integration File signal 2: autoint2.e  
 Quant Time: Jun 10 03:25:06 2022  
 Quant Method : Z:\pestpcbsrv\HPCHEM1\ECD\_P\methods\PP060722.M  
 Quant Title : GC EXTRACTABLES  
 QLast Update : Tue Jun 07 11:09:40 2022  
 Response via : Initial Calibration  
 Integrator: ChemStation

Volume Inj. : 2 µl  
 Signal #1 Phase : ZB-MR1 Signal #2 Phase: ZB-MR2  
 Signal #1 Info : 30Mx0.32mmx 0.50µ Signal #2 Info : 30M x 0.32mm x 0.25µm

Compound	RT#1	RT#2	Resp#1	Resp#2	ng/ml	ng/ml
-----						
System Monitoring Compounds						
1) SA Tetrachlo...	4.037	3.202	2239817	2342896	0.935m	1.231 #
2) SA Decachlor...	10.390	8.617	2394805	1560443	1.256	1.274

Target Compounds

(f)=RT Delta > 1/2 Window (#)=Amounts differ by > 25% (m)=manual int.

Data Path : Z:\pestpcbsrv\HPCHEM1\ECD\_P\Data\PP061022\  
 Data File : PP048678.D  
 Signal(s) : Signal #1: ECD1A.ch Signal #2: ECD2B.ch  
 Acq On : 10 Jun 2022 01:30  
 Operator : YP\AJ  
 Sample : N3245-11 10X  
 Misc :  
 ALS Vial : 42 Sample Multiplier: 1

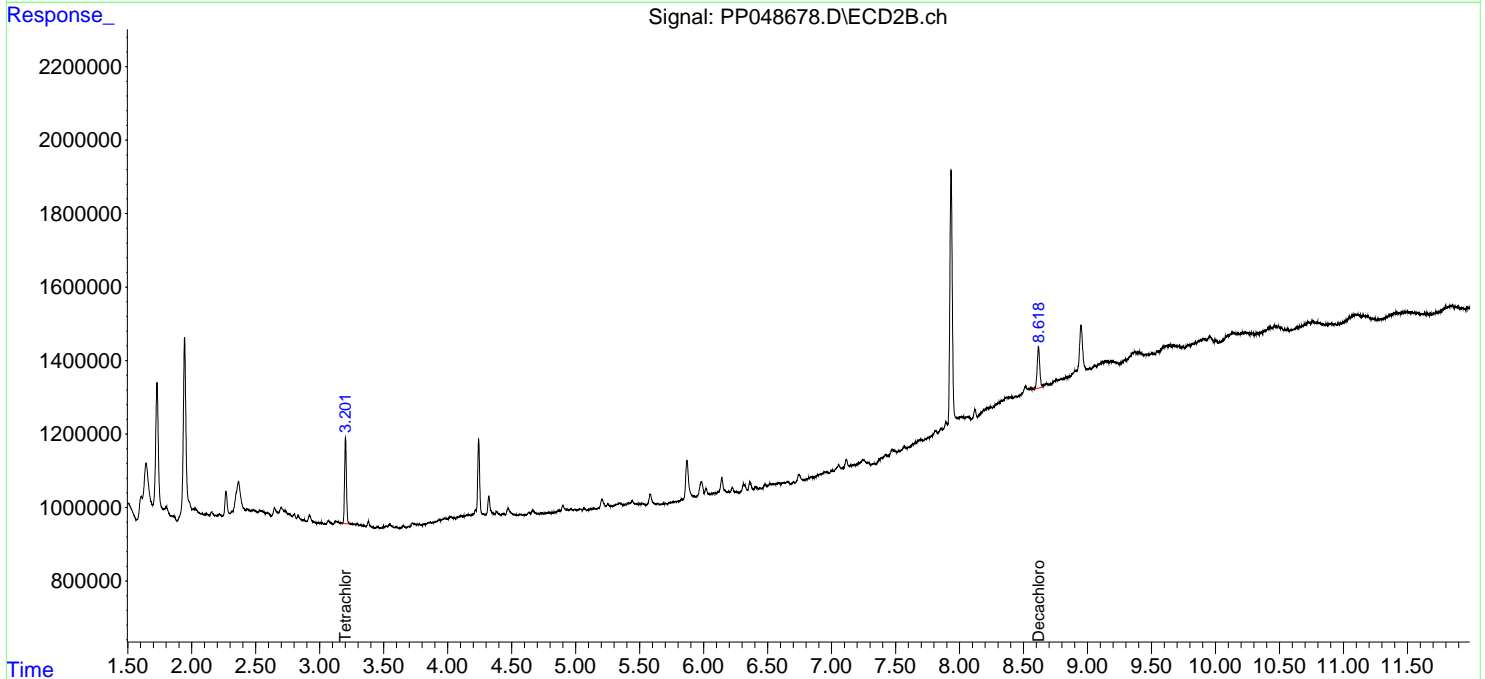
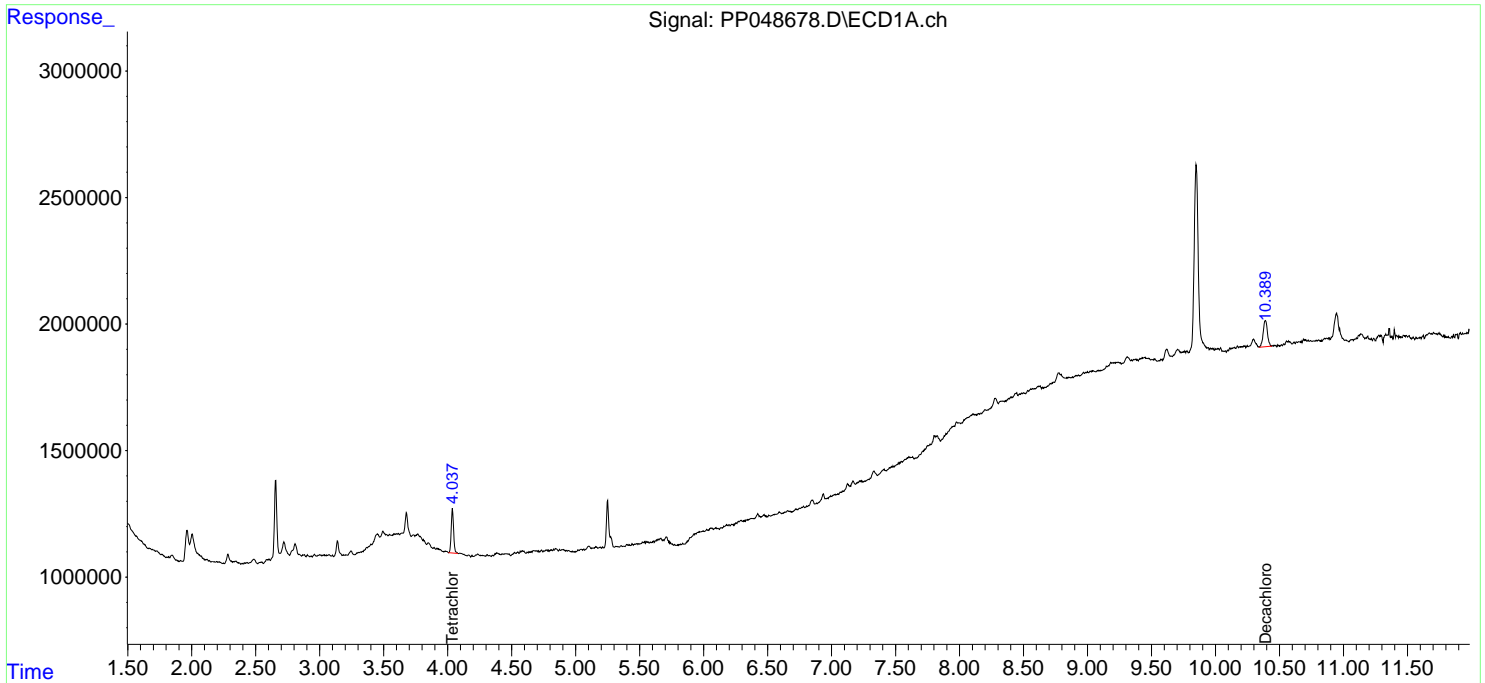
Instrument :  
 ECD\_P  
 ClientSampleId :  
 SOM-2022-40A

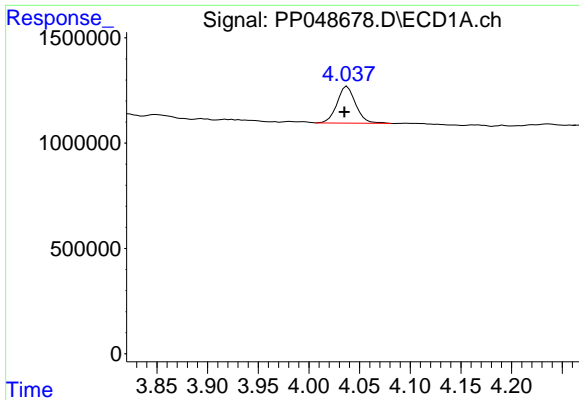
Manual Integrations  
**APPROVED**

Reviewed By :Yogesh Patel 06/10/2022  
 Supervised By :Ankita Jodhani 06/10/2022

Integration File signal 1: autoint1.e  
 Integration File signal 2: autoint2.e  
 Quant Time: Jun 10 03:25:06 2022  
 Quant Method : Z:\pestpcbsrv\HPCHEM1\ECD\_P\methods\PP060722.M  
 Quant Title : GC EXTRACTABLES  
 QLast Update : Tue Jun 07 11:09:40 2022  
 Response via : Initial Calibration  
 Integrator: ChemStation

Volume Inj. : 2 µl  
 Signal #1 Phase : ZB-MR1 Signal #2 Phase: ZB-MR2  
 Signal #1 Info : 30Mx0.32mmx 0.50µ Signal #2 Info : 30M x 0.32mm x 0.25µm



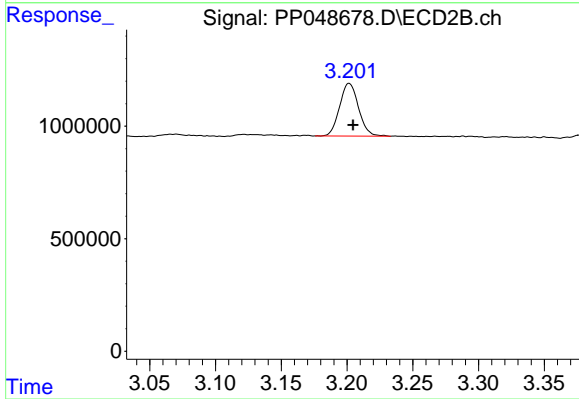


#1 Tetrachloro-m-xylene  
 R.T.: 4.037 min  
 Delta R.T.: 0.002 min  
 Response: 2239817  
 Conc: 0.93 ng/ml

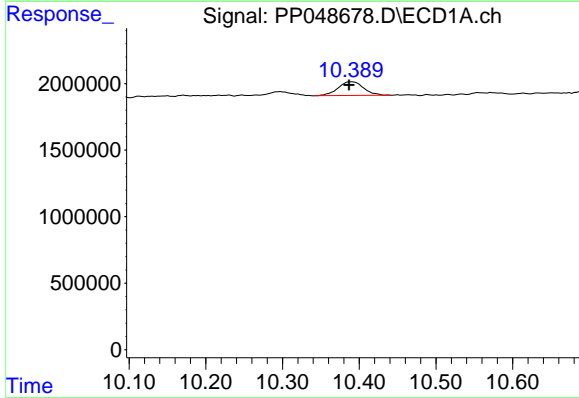
Instrument : ECD\_P  
 ClientSampleId : SOM-2022-40A

Manual Integrations  
**APPROVED**

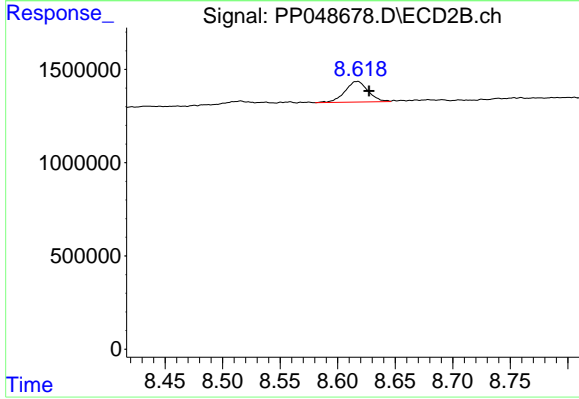
Reviewed By :Yogesh Patel 06/10/2022  
 Supervised By :Ankita Jodhani 06/10/2022



#1 Tetrachloro-m-xylene  
 R.T.: 3.202 min  
 Delta R.T.: -0.003 min  
 Response: 2342896  
 Conc: 1.23 ng/ml



#2 Decachlorobiphenyl  
 R.T.: 10.390 min  
 Delta R.T.: 0.003 min  
 Response: 2394805  
 Conc: 1.26 ng/ml



#2 Decachlorobiphenyl  
 R.T.: 8.617 min  
 Delta R.T.: -0.011 min  
 Response: 1560443  
 Conc: 1.27 ng/ml