

Data Path : Z:\pestpcbsrv\HPCHEM1\ECD_P\Data\PP061225\
 Data File : PP072872.D
 Signal(s) : Signal #1: ECD1A.ch Signal #2: ECD2B.ch
 Acq On : 12 Jun 2025 15:44
 Operator : YP\AJ
 Sample : Q2287-01
 Misc :
 ALS Vial : 10 Sample Multiplier: 1

Instrument :
 ECD_P
ClientSampleId :
 CONCRETE-SLAB

Manual Integrations
APPROVED
 Reviewed By :Yogesh Patel 06/13/2025
 Supervised By :mohammad ahmed 06/16/2025

Integration File signal 1: autoint1.e
 Integration File signal 2: autoint2.e
 Quant Time: Jun 12 22:46:02 2025
 Quant Method : Z:\pestpcbsrv\HPCHEM1\ECD_P\methods\PP051925.M
 Quant Title : GC EXTRACTABLES
 QLast Update : Sat May 24 03:32:20 2025
 Response via : Initial Calibration
 Integrator: ChemStation

Volume Inj. : 2 µl
 Signal #1 Phase : ZB-MR1 Signal #2 Phase: ZB-MR2
 Signal #1 Info : 30Mx0.32mmx 0.50µ Signal #2 Info : 30M x 0.32mm x 0.25µm

Compound	RT#1	RT#2	Resp#1	Resp#2	ng/ml	ng/ml

System Monitoring Compounds						
1) SA Tetrachlo...	4.497	3.792	39615785	32886703	19.701	20.575
2) SA Decachlor...	10.192	8.804	33234934	27721017	20.400m	26.186m#

Target Compounds

(f)=RT Delta > 1/2 Window (#)=Amounts differ by > 25% (m)=manual int.

Data Path : Z:\pestpcbsrv\HPCHEM1\ECD_P\Data\PP061225\
Data File : PP072872.D
Signal(s) : Signal #1: ECD1A.ch Signal #2: ECD2B.ch
Acq On : 12 Jun 2025 15:44
Operator : YP\AJ
Sample : Q2287-01
Misc :
ALS Vial : 10 Sample Multiplier: 1

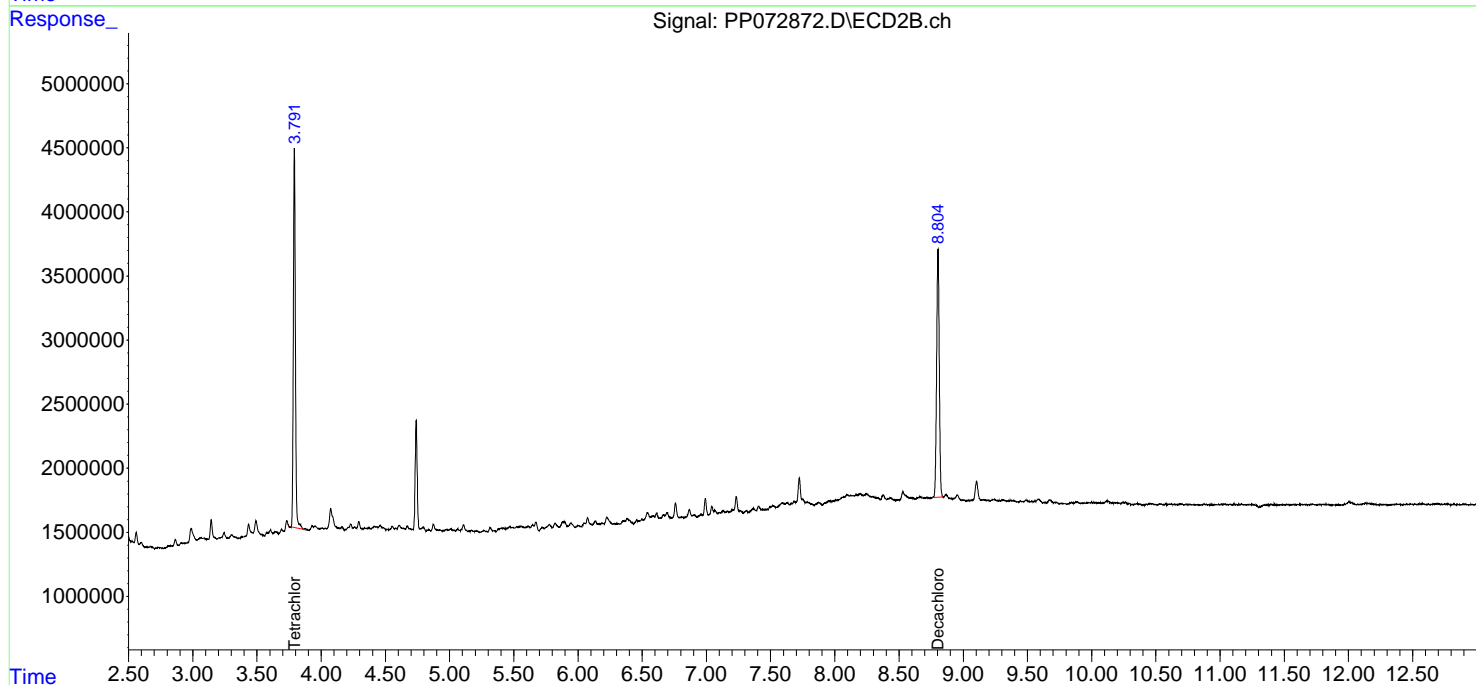
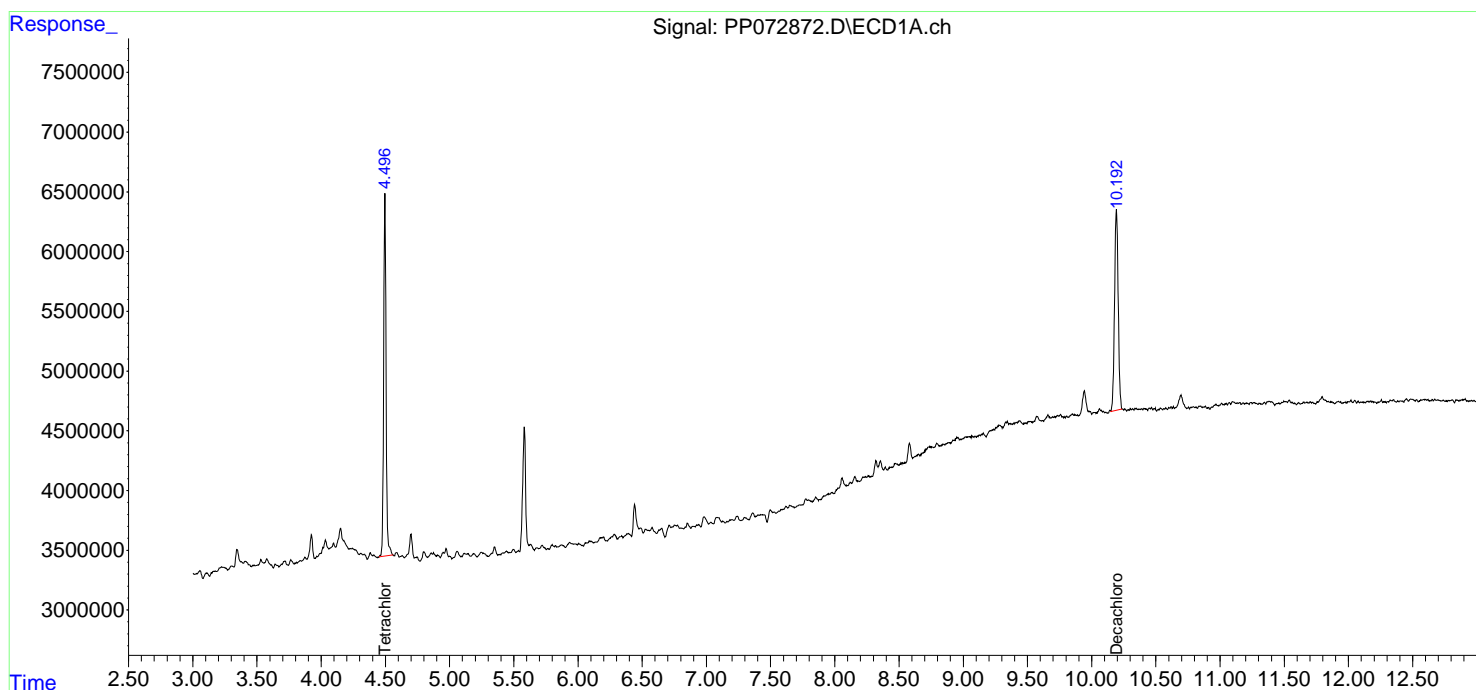
Instrument :
ECD_P
ClientSampleId :
CONCRETE-SLAB

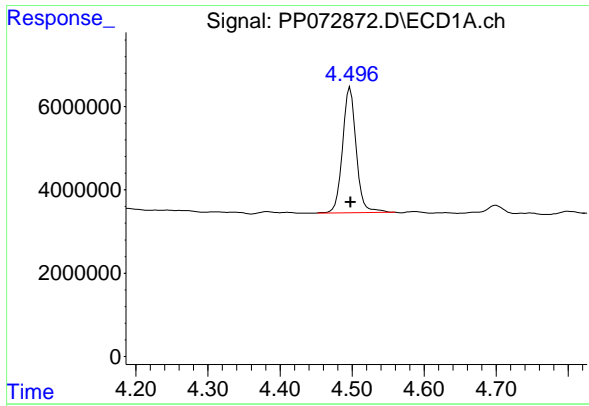
Manual Integrations
APPROVED

Reviewed By :Yogesh Patel 06/13/2025
Supervised By :mohammad ahmed 06/16/2025

Integration File signal 1: autoint1.e
Integration File signal 2: autoint2.e
Quant Time: Jun 12 22:46:02 2025
Quant Method : Z:\pestpcbsrv\HPCHEM1\ECD_P\methods\PP051925.M
Quant Title : GC EXTRACTABLES
QLast Update : Sat May 24 03:32:20 2025
Response via : Initial Calibration
Integrator: ChemStation

Volume Inj. : 2 µl
Signal #1 Phase : ZB-MR1 Signal #2 Phase: ZB-MR2
Signal #1 Info : 30Mx0.32mmx 0.50µm Signal #2 Info : 30M x 0.32mm x 0.25µm





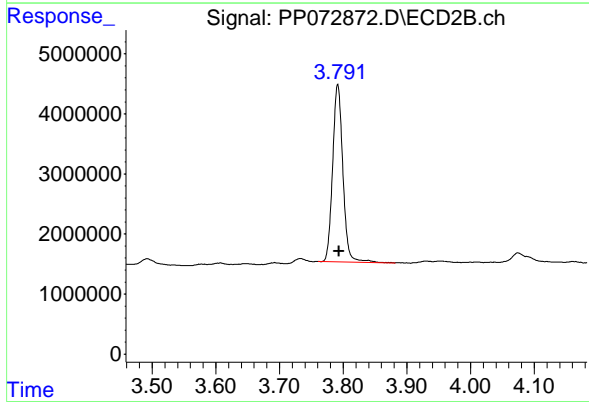
#1 Tetrachloro-m-xylene

R.T.: 4.497 min
 Delta R.T.: 0.000 min
 Response: 39615785
 Conc: 19.70 ng/ml

Instrument : ECD_P
 Client Sample Id : CONCRETE-SLAB

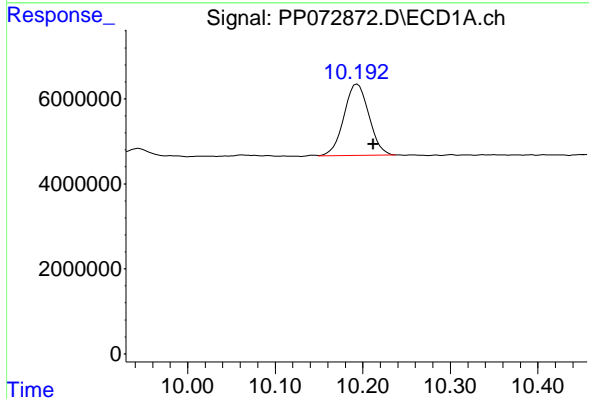
Manual Integrations
 APPROVED

Reviewed By :Yogesh Patel 06/13/2025
 Supervised By :mohammad ahmed 06/16/2025



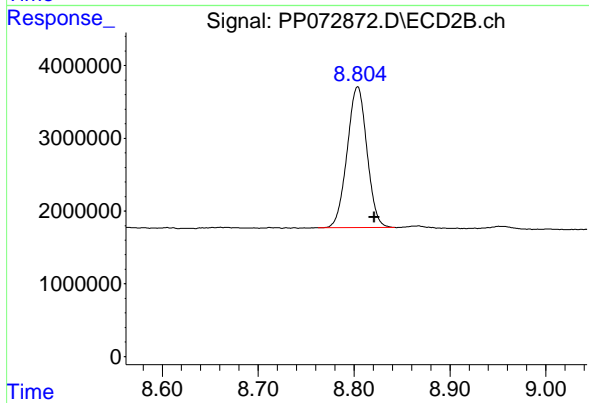
#1 Tetrachloro-m-xylene

R.T.: 3.792 min
 Delta R.T.: -0.002 min
 Response: 32886703
 Conc: 20.58 ng/ml



#2 Decachlorobiphenyl

R.T.: 10.192 min
 Delta R.T.: -0.020 min
 Response: 33234934
 Conc: 20.40 ng/ml m



#2 Decachlorobiphenyl

R.T.: 8.804 min
 Delta R.T.: -0.017 min
 Response: 27721017
 Conc: 26.19 ng/ml m