

Data Path : Z:\pestpcbsrv\HPCHEM1\ECD_P\Data\PP061321\
 Data File : PP036380.D
 Signal(s) : Signal #1: ECD1A.CH Signal #2: ECD2B.CH
 Acq On : 13 Jun 2021 8:21
 Operator : DD\AJ
 Sample : PB137039BL
 Misc :
 ALS Vial : 6 Sample Multiplier: 1

Instrument :
 ECD_P
 ClientSampleId :

Integration File signal 1: autoint1.e
 Integration File signal 2: autoint2.e
 Quant Time: Jun 14 04:40:38 2021
 Quant Method : Z:\pestpcbsrv\HPCHEM1\ECD_P\methods\PP061121.M
 Quant Title : GC EXTRACTABLES
 QLast Update : Sat Jun 12 04:04:46 2021
 Response via : Initial Calibration
 Integrator: ChemStation 6890 Scale Mode: Small noise peaks clipped

Volume Inj. : 2 µl
 Signal #1 Phase : ZB-MR1 Signal #2 Phase: ZB-MR2
 Signal #1 Info : 30Mx0.32mmx 0.50µ Signal #2 Info : 30M x 0.32mm x 0.25µm

Compound	RT#1	RT#2	Resp#1	Resp#2	ng/ml	ng/ml

System Monitoring Compounds						
1) SA Tetrachlo...	4.966	3.961	957839	678133	22.685	22.577
2) SA Decachlor...	11.003	9.267	985638	767414	27.295	24.021
Target Compounds						
8) L2 AR-1221-1	5.222	0.000	44924	0	90.331	N.D. #
9) L2 AR-1221-2	5.317	4.311	12328	10520	31.964	42.588 #
28) L6 AR-1254-3	7.825f	0.000	38015	0	13.696	N.D. #

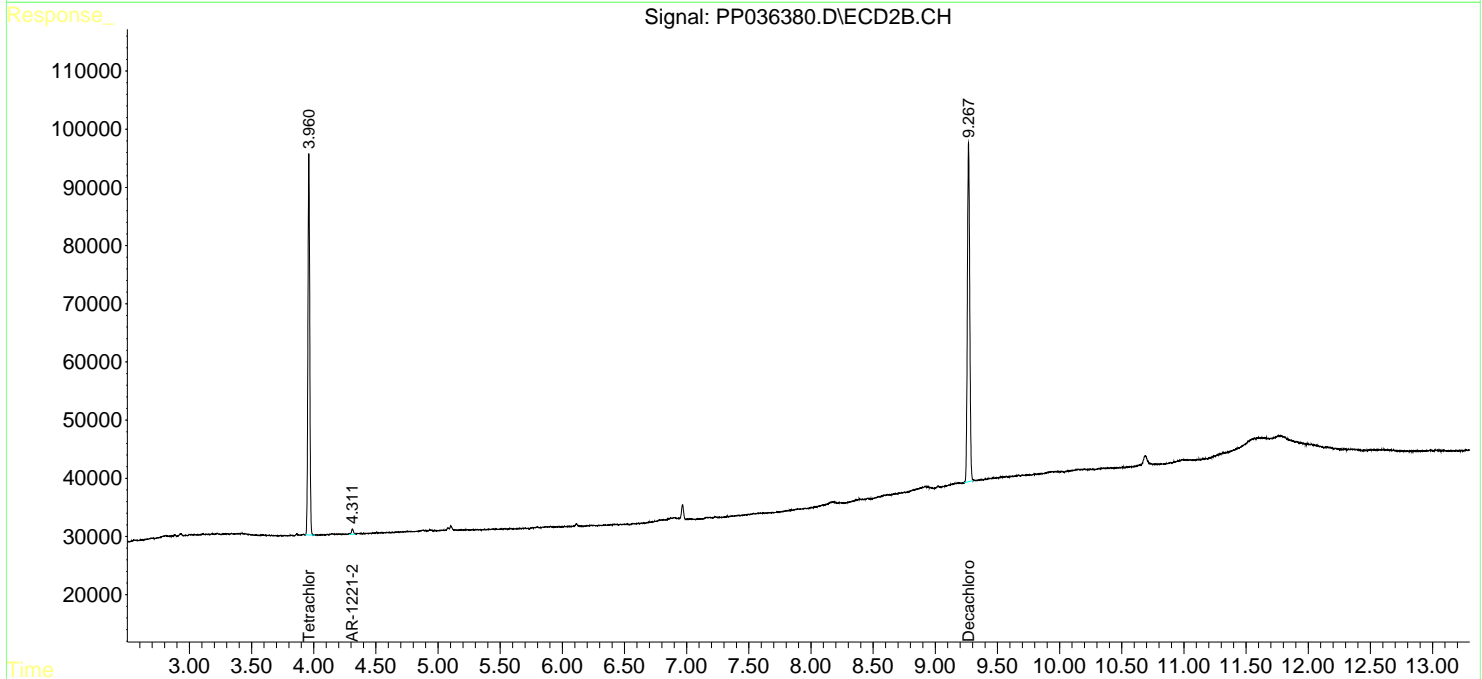
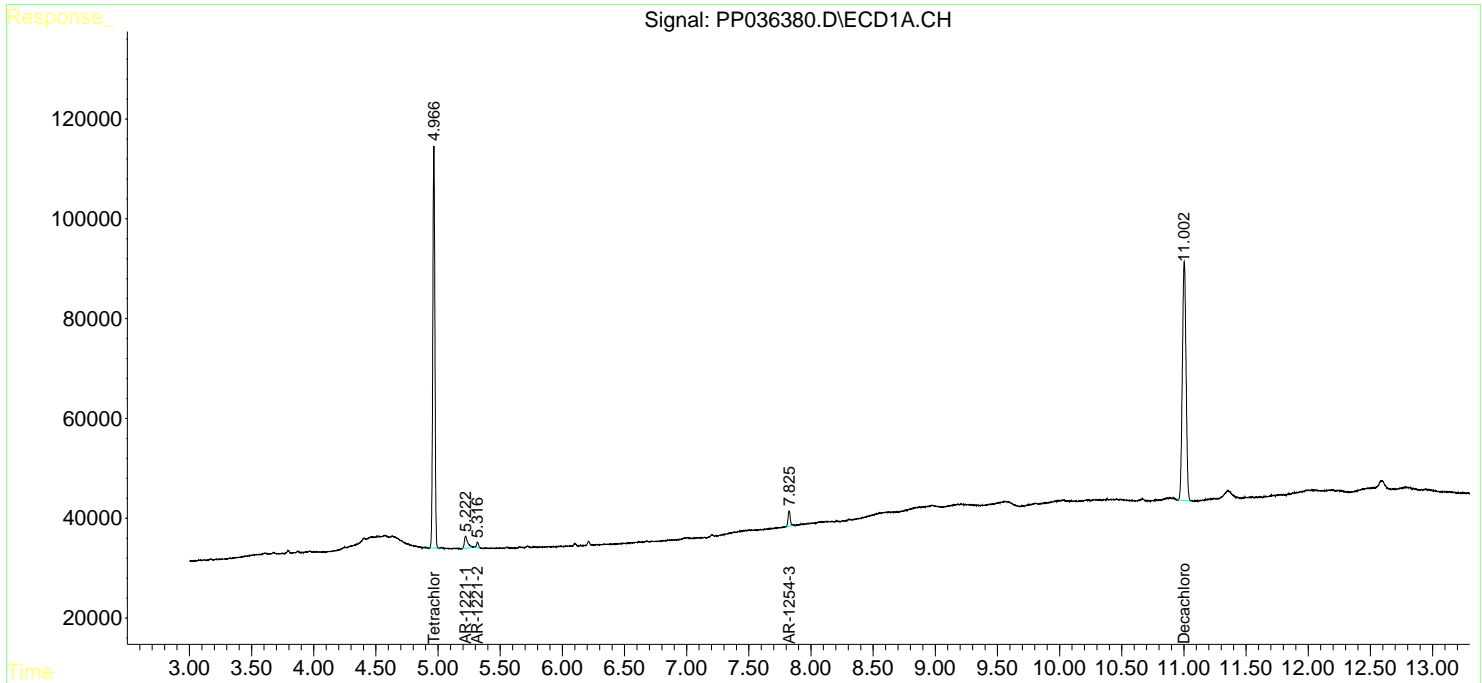
(f)=RT Delta > 1/2 Window (#)=Amounts differ by > 25% (m)=manual int.

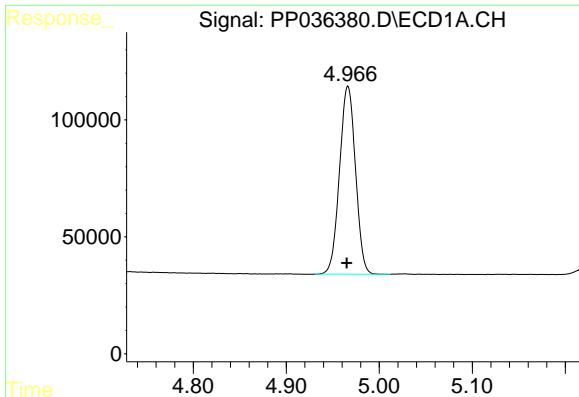
Data Path : Z:\pestpcbsrv\HPCHEM1\ECD_P\Data\PP061321\
 Data File : PP036380.D
 Signal(s) : Signal #1: ECD1A.CH Signal #2: ECD2B.CH
 Acq On : 13 Jun 2021 8:21
 Operator : DD\AJ
 Sample : PB137039BL
 Misc :
 ALS Vial : 6 Sample Multiplier: 1

Instrument :
 ECD_P
 ClientSampled :

Integration File signal 1: autoint1.e
 Integration File signal 2: autoint2.e
 Quant Time: Jun 14 04:40:38 2021
 Quant Method : Z:\pestpcbsrv\HPCHEM1\ECD_P\methods\PP061121.M
 Quant Title : GC EXTRACTABLES
 QLast Update : Sat Jun 12 04:04:46 2021
 Response via : Initial Calibration
 Integrator: ChemStation 6890 Scale Mode: Small noise peaks clipped

Volume Inj. : 2 µl
 Signal #1 Phase : ZB-MR1 Signal #2 Phase: ZB-MR2
 Signal #1 Info : 30Mx0.32mmx 0.50µ Signal #2 Info : 30M x 0.32mm x 0.25µm

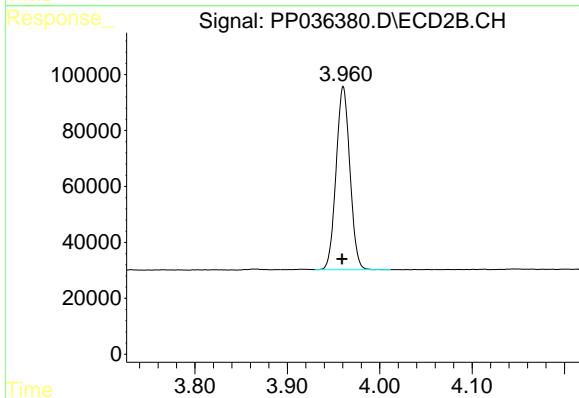




#1 Tetrachloro-m-xylene

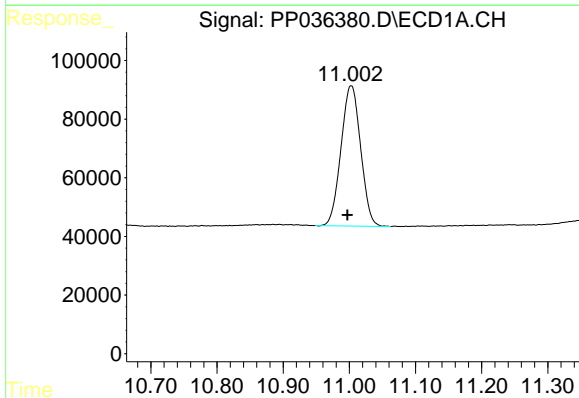
R.T.: 4.966 min
 Delta R.T.: 0.001 min
 Response: 957839
 Conc: 22.68 ng/ml

Instrument :
 ECD_P
 ClientSampled :



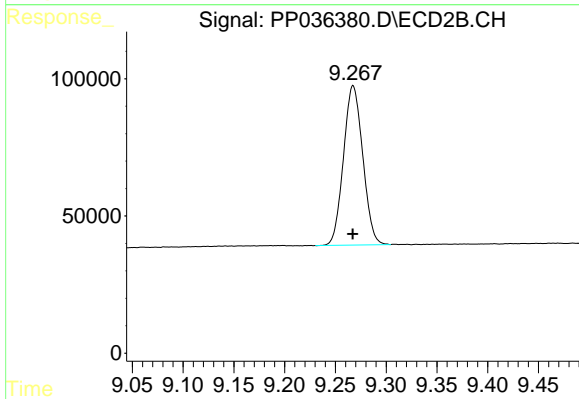
#1 Tetrachloro-m-xylene

R.T.: 3.961 min
 Delta R.T.: 0.001 min
 Response: 678133
 Conc: 22.58 ng/ml



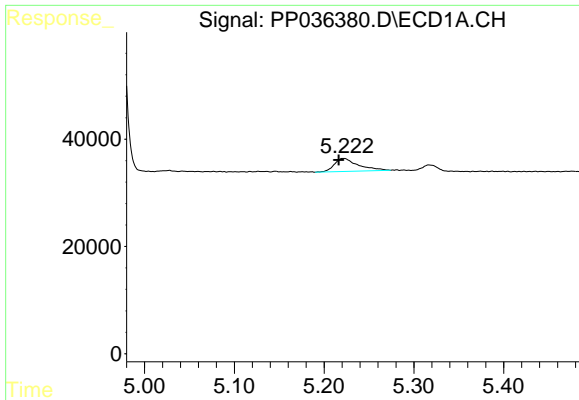
#2 Decachlorobiphenyl

R.T.: 11.003 min
 Delta R.T.: 0.006 min
 Response: 985638
 Conc: 27.30 ng/ml



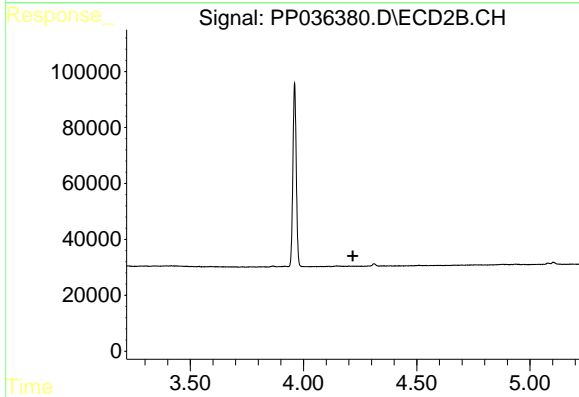
#2 Decachlorobiphenyl

R.T.: 9.267 min
 Delta R.T.: 0.000 min
 Response: 767414
 Conc: 24.02 ng/ml

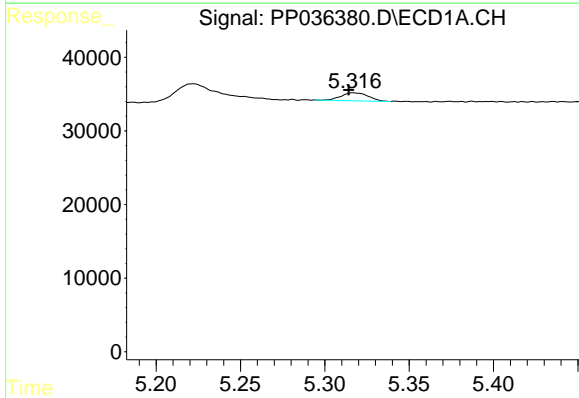


#8 AR-1221-1
 R.T.: 5.222 min
 Delta R.T.: 0.006 min
 Response: 44924
 Conc: 90.33 ng/ml

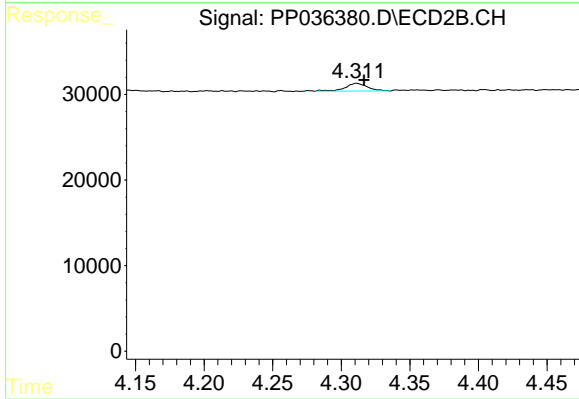
Instrument :
 ECD_P
 ClientSampled :



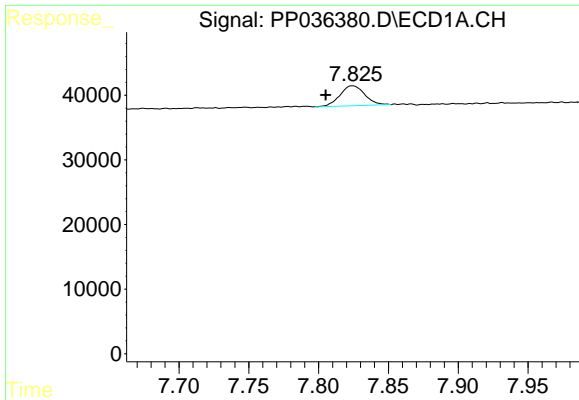
#8 AR-1221-1
 R.T.: 0.000 min
 Exp R.T. : 4.218 min
 Response: 0
 Conc: N.D.



#9 AR-1221-2
 R.T.: 5.317 min
 Delta R.T.: 0.003 min
 Response: 12328
 Conc: 31.96 ng/ml



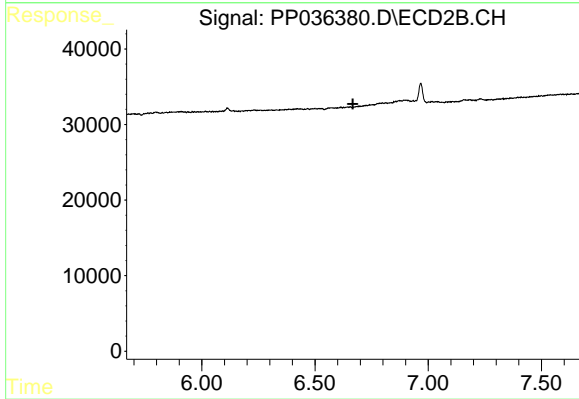
#9 AR-1221-2
 R.T.: 4.311 min
 Delta R.T.: -0.005 min
 Response: 10520
 Conc: 42.59 ng/ml



#28 AR-1254-3

R.T.: 7.825 min
Delta R.T.: 0.019 min
Response: 38015
Conc: 13.70 ng/ml

Instrument :
ECD_P
ClientSampleId :



#28 AR-1254-3

R.T.: 0.000 min
Exp R.T. : 6.667 min
Response: 0
Conc: N.D.