

Data Path : Z:\pestpcbsrv\HPCHEM1\ECD_P\Data\PP061323\
 Data File : PP058452.D
 Signal(s) : Signal #1: ECD1A.ch Signal #2: ECD2B.ch
 Acq On : 13 Jun 2023 14:56
 Operator : YP\AJ
 Sample : AR1248ICC750
 Misc :
 ALS Vial : 16 Sample Multiplier: 1

Instrument :
 ECD_P
 ClientSampleId :

Integration File signal 1: autoint1.e
 Integration File signal 2: autoint2.e
 Quant Time: Jun 13 15:42:01 2023
 Quant Method : Z:\pestpcbsrv\HPCHEM1\ECD_P\methods\PP061323.M
 Quant Title : GC EXTRACTABLES
 QLast Update : Tue Jun 13 15:41:07 2023
 Response via : Initial Calibration
 Integrator: ChemStation

Volume Inj. : 2 µl
 Signal #1 Phase : ZB-MR1 Signal #2 Phase: ZB-MR2
 Signal #1 Info : 30Mx0.32mmx 0.50µ Signal #2 Info : 30M x 0.32mm x 0.25µm

Compound	RT#1	RT#2	Resp#1	Resp#2	ng/ml	ng/ml

System Monitoring Compounds						
1) SA Tetrachlo...	4.372	3.612	127.7E6	133.6E6	73.265	71.567
2) SA Decachlor...	10.194	8.669	50932469	94880242	69.994	70.816
Target Compounds						
21) L5 AR-1248-1	5.553	4.708	19787284	26122128	709.325	692.526
22) L5 AR-1248-2	5.830	4.947	30620182	36210554	707.153	683.819
23) L5 AR-1248-3	6.035	4.989	32297587	38443577	714.279	685.992
24) L5 AR-1248-4	6.444	5.163	30582687	45655059	720.113	691.551
25) L5 AR-1248-5	6.483	5.560	30189379	43657646	727.875	705.255

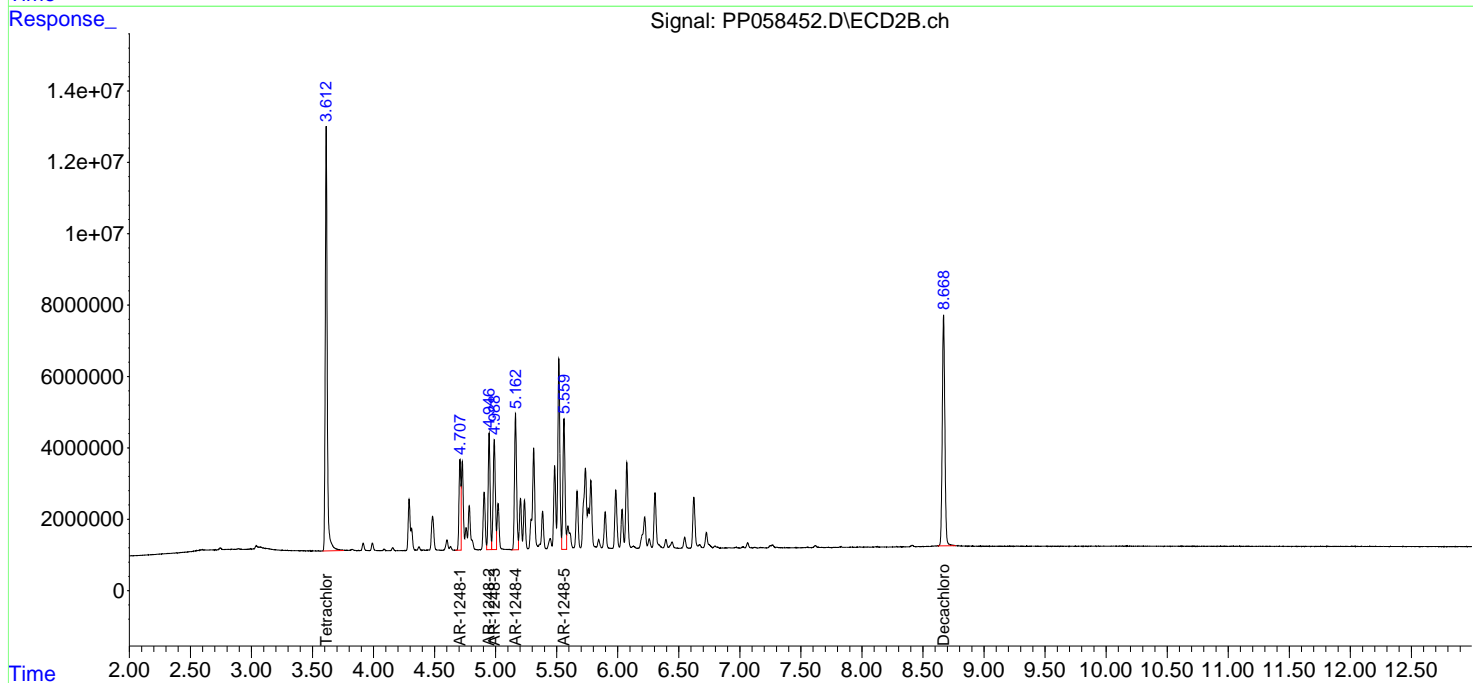
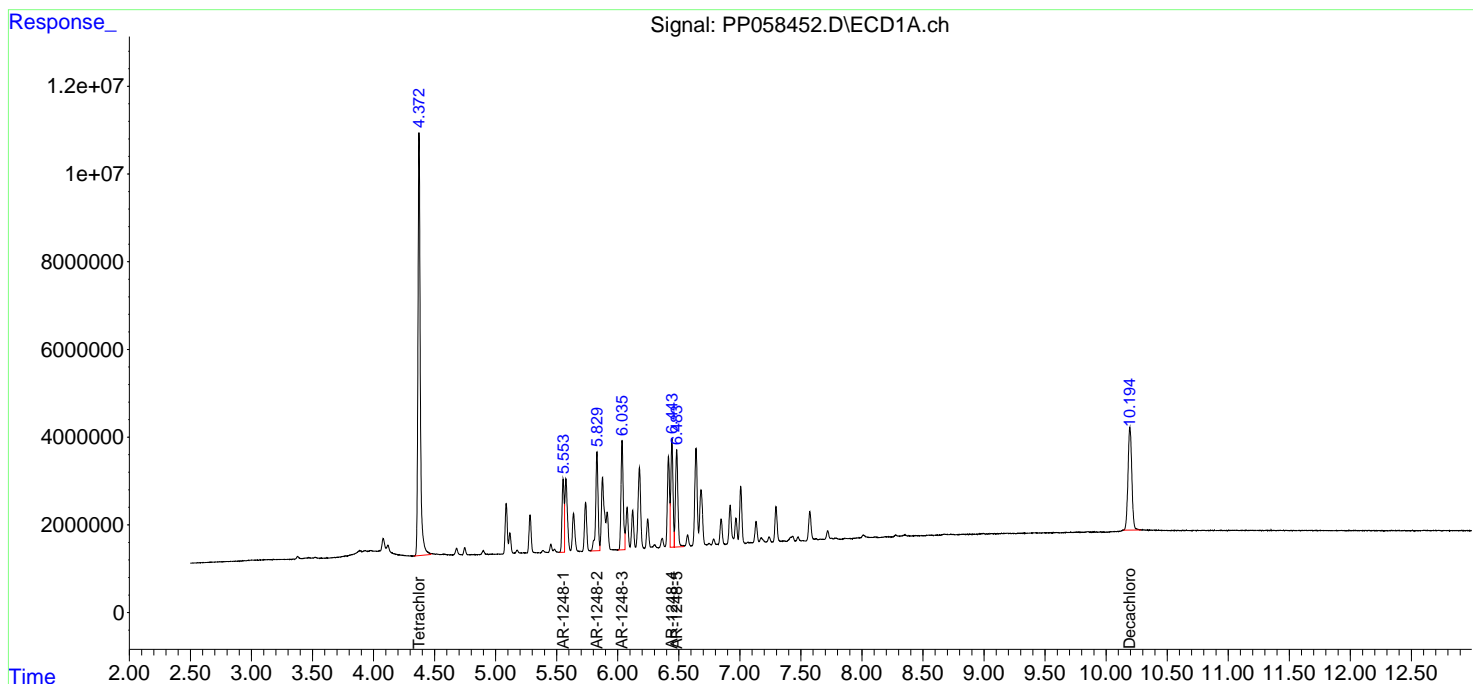
(f)=RT Delta > 1/2 Window (#)=Amounts differ by > 25% (m)=manual int.

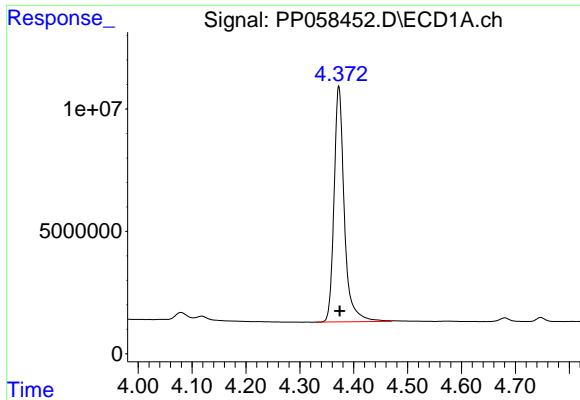
Data Path : Z:\pestpcbsrv\HPCHEM1\ECD_P\Data\PP061323\
 Data File : PP058452.D
 Signal(s) : Signal #1: ECD1A.ch Signal #2: ECD2B.ch
 Acq On : 13 Jun 2023 14:56
 Operator : YP\AJ
 Sample : AR1248ICC750
 Misc :
 ALS Vial : 16 Sample Multiplier: 1

Instrument :
 ECD_P
 ClientSampleId :

Integration File signal 1: autoint1.e
 Integration File signal 2: autoint2.e
 Quant Time: Jun 13 15:42:01 2023
 Quant Method : Z:\pestpcbsrv\HPCHEM1\ECD_P\methods\PP061323.M
 Quant Title : GC EXTRACTABLES
 QLast Update : Tue Jun 13 15:41:07 2023
 Response via : Initial Calibration
 Integrator: ChemStation

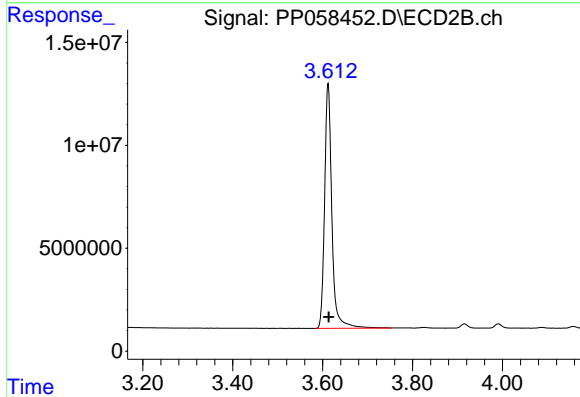
Volume Inj. : 2 µl
 Signal #1 Phase : ZB-MR1 Signal #2 Phase: ZB-MR2
 Signal #1 Info : 30Mx0.32mmx 0.50µ Signal #2 Info : 30M x 0.32mm x 0.25µm



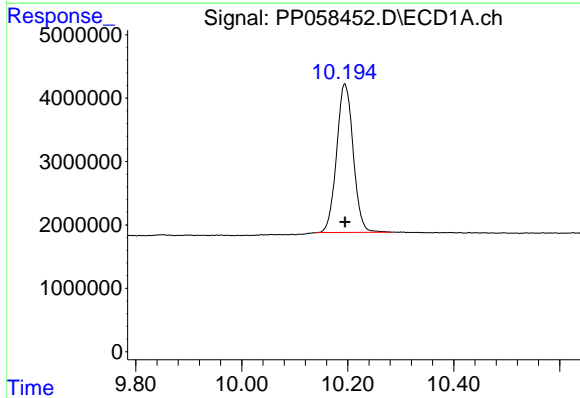


#1 Tetrachloro-m-xylene
 R.T.: 4.372 min
 Delta R.T.: -0.002 min
 Response: 127660772
 Conc: 73.27 ng/ml

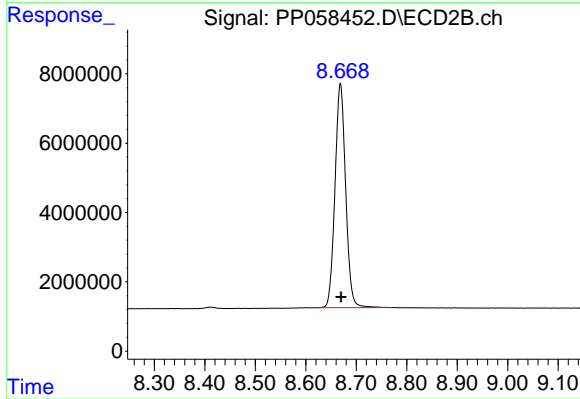
Instrument :
 ECD_P
 ClientSampleId :



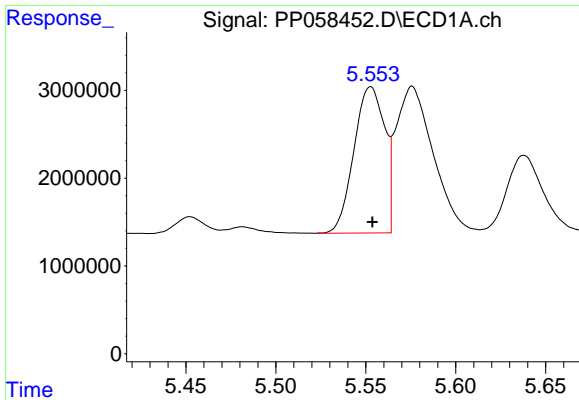
#1 Tetrachloro-m-xylene
 R.T.: 3.612 min
 Delta R.T.: -0.002 min
 Response: 133550051
 Conc: 71.57 ng/ml



#2 Decachlorobiphenyl
 R.T.: 10.194 min
 Delta R.T.: 0.000 min
 Response: 50932469
 Conc: 69.99 ng/ml



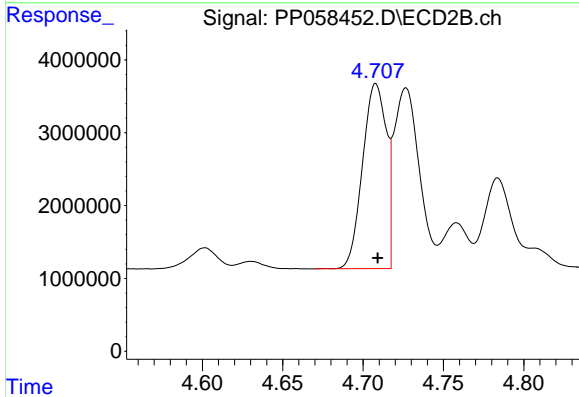
#2 Decachlorobiphenyl
 R.T.: 8.669 min
 Delta R.T.: 0.000 min
 Response: 94880242
 Conc: 70.82 ng/ml



#21 AR-1248-1

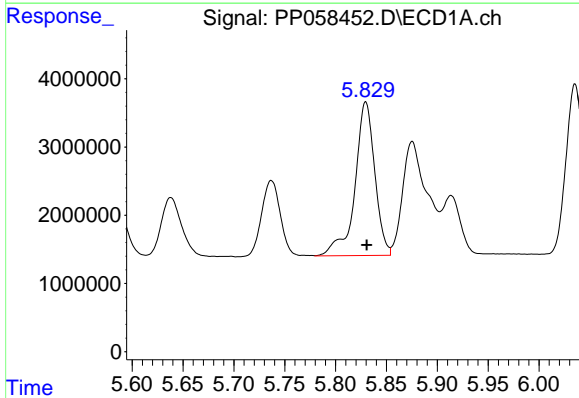
R.T.: 5.553 min
 Delta R.T.: 0.000 min
 Response: 19787284
 Conc: 709.32 ng/ml

Instrument :
 ECD_P
 ClientSampleId :



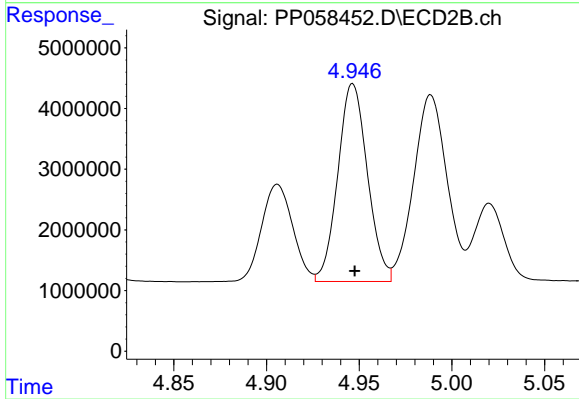
#21 AR-1248-1

R.T.: 4.708 min
 Delta R.T.: -0.001 min
 Response: 26122128
 Conc: 692.53 ng/ml



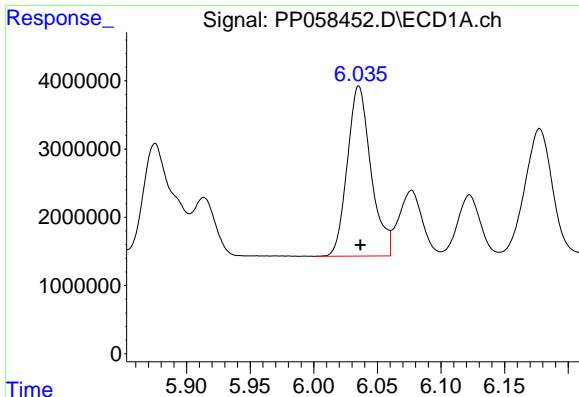
#22 AR-1248-2

R.T.: 5.830 min
 Delta R.T.: 0.000 min
 Response: 30620182
 Conc: 707.15 ng/ml



#22 AR-1248-2

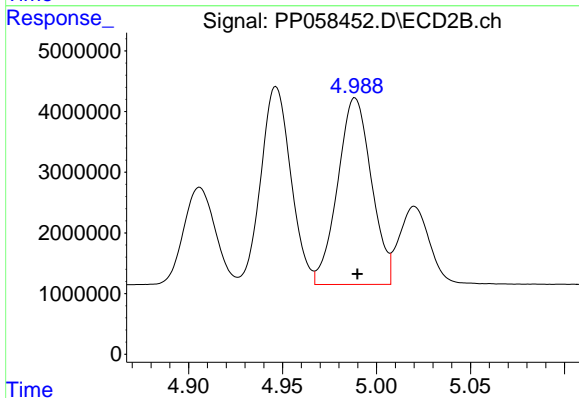
R.T.: 4.947 min
 Delta R.T.: -0.001 min
 Response: 36210554
 Conc: 683.82 ng/ml



#23 AR-1248-3

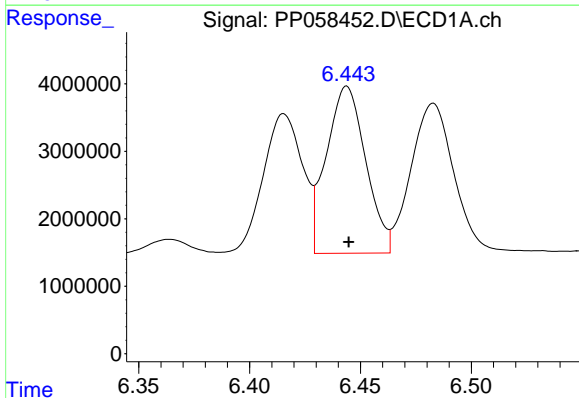
R.T.: 6.035 min
 Delta R.T.: -0.001 min
 Response: 32297587
 Conc: 714.28 ng/ml

Instrument :
 ECD_P
 ClientSampleId :



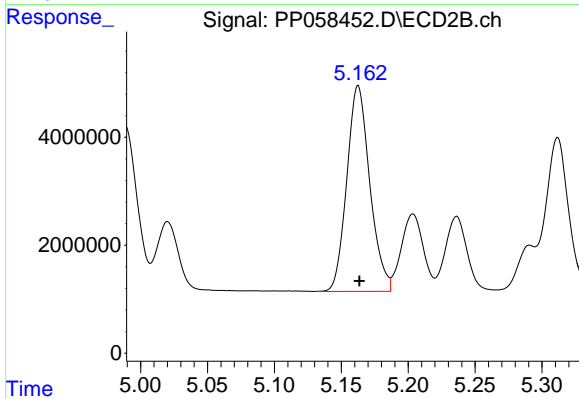
#23 AR-1248-3

R.T.: 4.989 min
 Delta R.T.: -0.001 min
 Response: 38443577
 Conc: 685.99 ng/ml



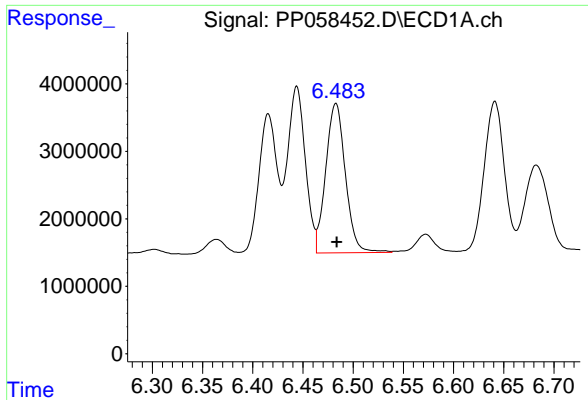
#24 AR-1248-4

R.T.: 6.444 min
 Delta R.T.: 0.000 min
 Response: 30582687
 Conc: 720.11 ng/ml



#24 AR-1248-4

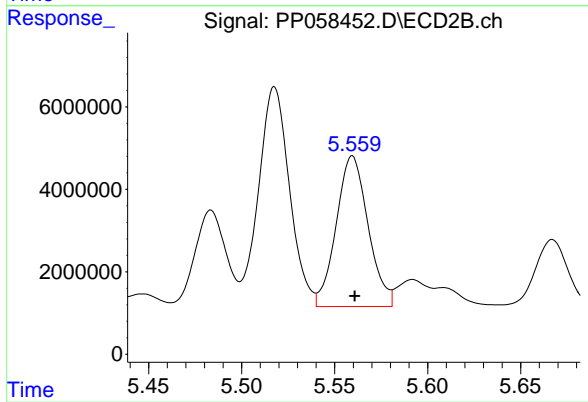
R.T.: 5.163 min
 Delta R.T.: 0.000 min
 Response: 45655059
 Conc: 691.55 ng/ml



#25 AR-1248-5

R.T.: 6.483 min
Delta R.T.: 0.000 min
Response: 30189379
Conc: 727.87 ng/ml

Instrument :
ECD_P
ClientSampleId :



#25 AR-1248-5

R.T.: 5.560 min
Delta R.T.: -0.001 min
Response: 43657646
Conc: 705.25 ng/ml