

Data Path : Z:\pestpcbsrv\HPCHEM1\ECD_P\Data\PP061324\
 Data File : PP065685.D
 Signal(s) : Signal #1: ECD1A.ch Signal #2: ECD2B.ch
 Acq On : 14 Jun 2024 01:11
 Operator : YP\AJ
 Sample : AR1660CCC500
 Misc :
 ALS Vial : 3 Sample Multiplier: 1

Instrument :
 ECD_P
 ClientSampleId :
 AR1660CCC500

Integration File signal 1: autoint1.e
 Integration File signal 2: autoint2.e
 Quant Time: Jun 14 02:30:16 2024
 Quant Method : Z:\pestpcbsrv\HPCHEM1\ECD_P\methods\PP060524.M
 Quant Title : GC EXTRACTABLES
 QLast Update : Thu Jun 06 05:25:59 2024
 Response via : Initial Calibration
 Integrator: ChemStation

Volume Inj. : 2 µl
 Signal #1 Phase : ZB-MR1 Signal #2 Phase: ZB-MR2
 Signal #1 Info : 30Mx0.32mmx 0.50µ Signal #2 Info : 30M x 0.32mm x 0.25µm

Compound	RT#1	RT#2	Resp#1	Resp#2	ng/ml	ng/ml
System Monitoring Compounds						
1) SA Tetrachlo...	4.826	4.068	94429296	139.1E6	49.780	49.798
2) SA Decachlor...	10.840	9.251	94361728	66818621	47.976	45.356
Target Compounds						
3) L1 AR-1016-1	6.003	5.181	30570007	39268614	470.205	460.447
4) L1 AR-1016-2	6.027	5.201	44267348	55605906	462.206	470.975
5) L1 AR-1016-3	6.090	5.382	28319416	29580865	462.853	460.931
6) L1 AR-1016-4	6.190	5.420	22801140	24122804	463.645	467.460
7) L1 AR-1016-5	6.485	5.641	23250070	30184949	463.840	457.587
8) L2 AR-1221-1	5.028	4.283	3407625	4976477	133.531	143.028
9) L2 AR-1221-2	5.120	4.374	4900928	7772435	253.775	287.927
10) L2 AR-1221-3	5.198	4.452	18137909	25558525	322.772	329.567
11) L3 AR-1232-1	5.198	4.452	18137909	25558525	400.880	404.337
12) L3 AR-1232-2	5.735	5.201	25649993	55605906	984.859	996.675
13) L3 AR-1232-3	6.027	5.382	44267348	29580865	978.556	982.181
14) L3 AR-1232-4	6.190	5.464	22801140	29259869	976.154	1069.437
15) L3 AR-1232-5	6.277	5.641	21211986	30184949	1080.474	1032.332
16) L4 AR-1242-1	6.003	5.181	30570007	39268614	559.040	546.457
17) L4 AR-1242-2	6.027	5.201	44267348	55605906	558.217	559.153
18) L4 AR-1242-3	6.090	5.382	28319416	29580865	560.245	549.944
19) L4 AR-1242-4	6.190	5.464	22801140	29259869	555.645	549.376
20) L4 AR-1242-5	6.929	5.998	6789902	27913564	155.654	469.781 #
21) L5 AR-1248-1	6.003	5.181	30570007	39268614	751.673	735.725
22) L5 AR-1248-2	6.277	5.420	21211986	24122804	340.354	327.734
23) L5 AR-1248-3	6.485	5.464	23250070	29259869	345.264	382.893
24) L5 AR-1248-4	6.863f	5.641	28400257	30184949	398.907	343.344
25) L5 AR-1248-5	6.929	6.039	6789902	8002240	97.948	100.307
26) L6 AR-1254-1	6.863	5.998	28400257	27913564	362.535	226.540 #
27) L6 AR-1254-2	7.081	6.144	18617901	19839438	157.603	188.423
28) L6 AR-1254-3	7.450	6.569	9437311	41587906	77.334	262.809 #
29) L6 AR-1254-4	7.736	6.783	6330243	2816190	71.185	30.499 #
30) L6 AR-1254-5	8.155	7.206	69974196	54139702	714.328	422.998 #
31) L7 AR-1260-1	7.614	6.686	45348402	47821209	468.205	450.634
32) L7 AR-1260-2	7.868	6.872	52812328	55250162	471.034	448.001
33) L7 AR-1260-3	8.234	7.032	42965191	49691374	492.114	428.464
34) L7 AR-1260-4	8.478	7.507	47797482	38141669	476.968	433.056
35) L7 AR-1260-5	8.825	7.744	90138080	85362447	477.970	445.963
36) L8 AR-1262-1	8.295	7.296	24270428	22450725	452.986	403.660
37) L8 AR-1262-2	8.825	7.507	90138080	38141669	424.916	342.303
38) L8 AR-1262-3	9.184	8.031	61011099	19322009	398.510	227.448 #
39) L8 AR-1262-4	9.249f	8.097	40136032	59278116	331.264	386.138
40) L8 AR-1262-5	9.993	8.628	26367410	20977343	324.657	298.681
41) L9 AR-1268-1	9.184f	8.031	61011099	19322009	240.202	83.497 #

Data Path : Z:\pestpcbsrv\HPCHEM1\ECD_P\Data\PP061324\
 Data File : PP065685.D
 Signal(s) : Signal #1: ECD1A.ch Signal #2: ECD2B.ch
 Acq On : 14 Jun 2024 01:11
 Operator : YP\AJ
 Sample : AR1660CCC500
 Misc :
 ALS Vial : 3 Sample Multiplier: 1

Instrument :
 ECD_P
 ClientSampleId :
 AR1660CCC500

Integration File signal 1: autoint1.e
 Integration File signal 2: autoint2.e
 Quant Time: Jun 14 02:30:16 2024
 Quant Method : Z:\pestpcbsrv\HPCHEM1\ECD_P\methods\PP060524.M
 Quant Title : GC EXTRACTABLES
 QLast Update : Thu Jun 06 05:25:59 2024
 Response via : Initial Calibration
 Integrator: ChemStation

Volume Inj. : 2 µl
 Signal #1 Phase : ZB-MR1 Signal #2 Phase: ZB-MR2
 Signal #1 Info : 30Mx0.32mmx 0.50µ Signal #2 Info : 30M x 0.32mm x 0.25µm

	Compound	RT#1	RT#2	Resp#1	Resp#2	ng/ml	ng/ml
42)	L9 AR-1268-2	9.249f	8.097	40136032	59278116	169.901	282.452 #
43)	L9 AR-1268-3	9.524	8.317	1167365	1054256	5.747	6.030
44)	L9 AR-1268-4	9.993	8.628	26367410	20977343	316.407	276.680
45)	L9 AR-1268-5	10.455	8.957	8090293	5668144	12.176	10.821

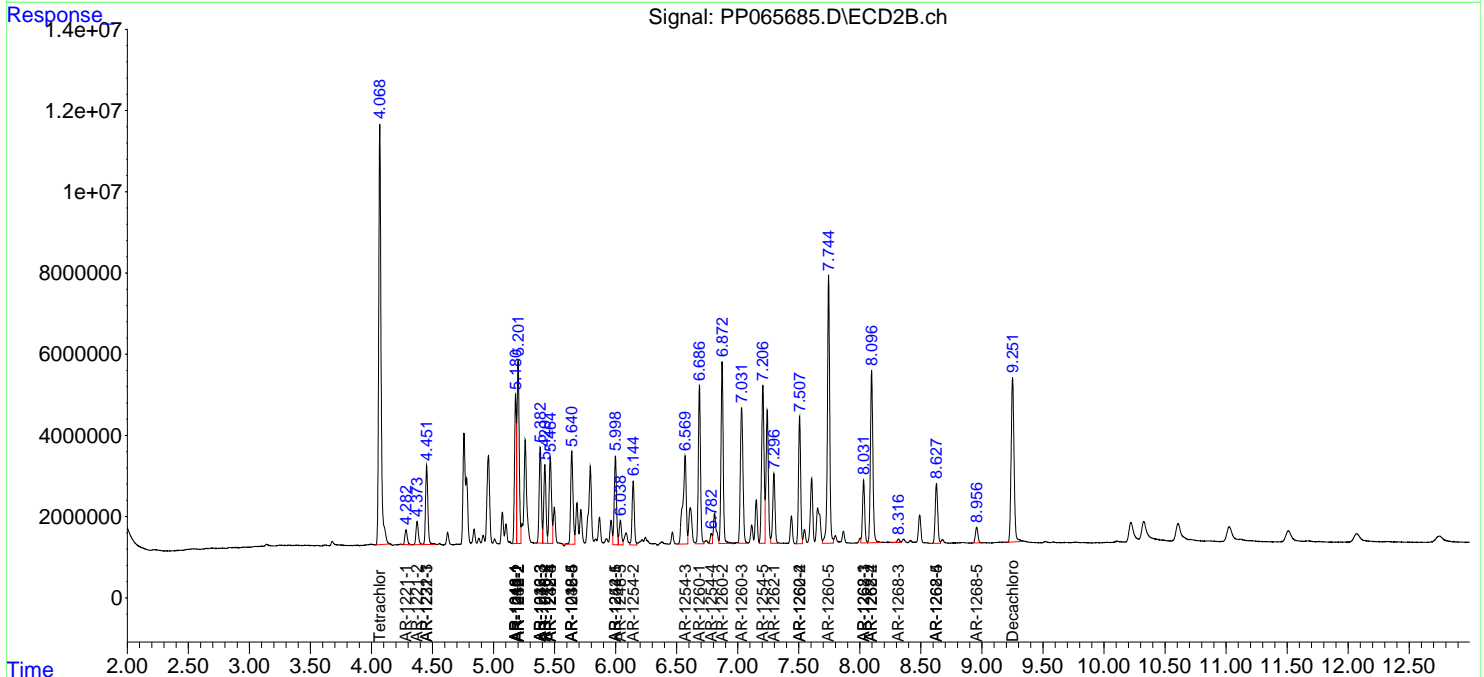
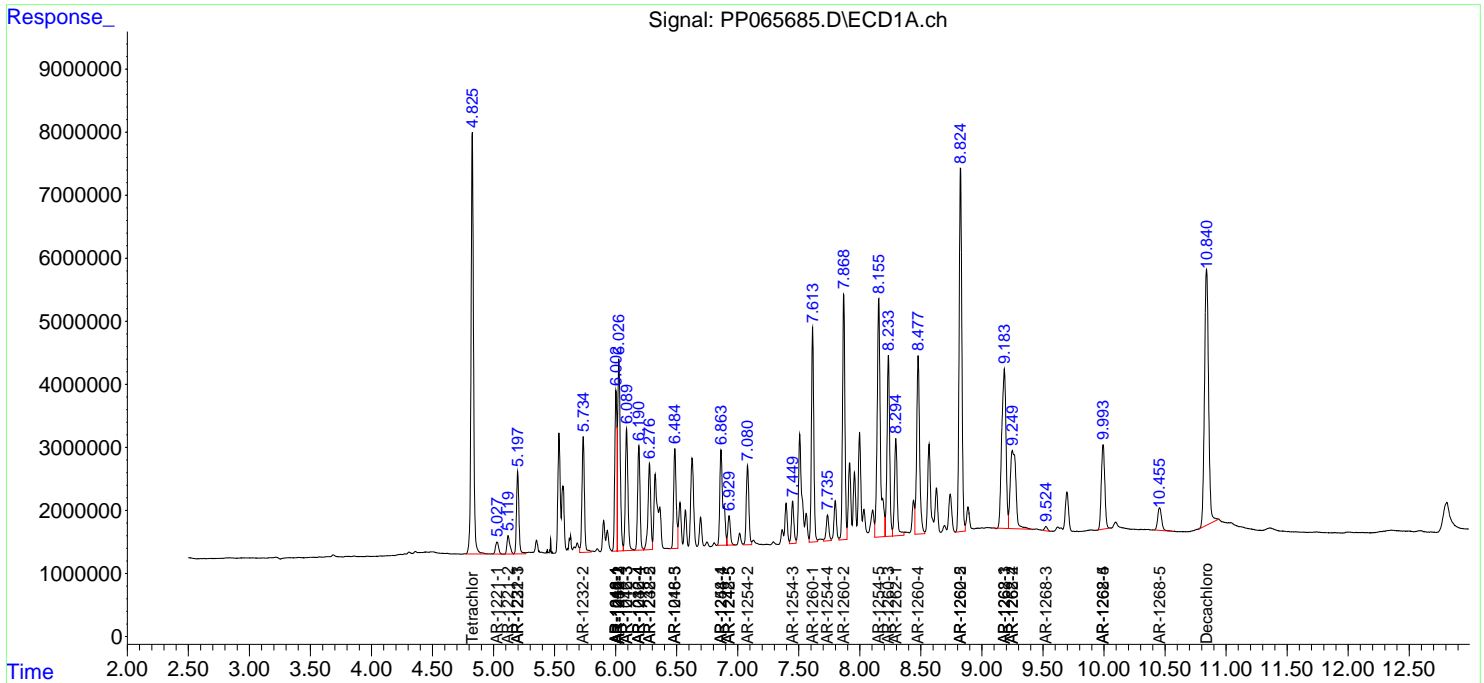
(f)=RT Delta > 1/2 Window (#)=Amounts differ by > 25% (m)=manual int.

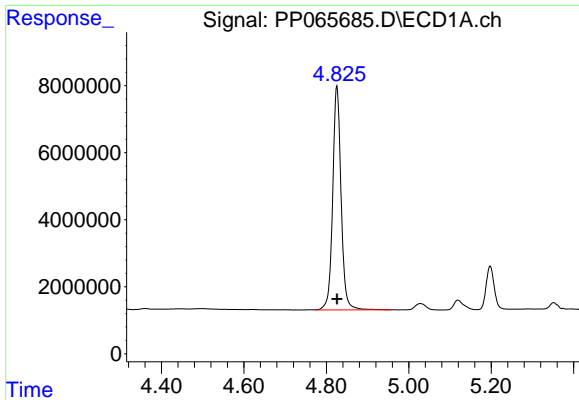
Data Path : Z:\pestpcbsrv\HPCHEM1\ECD_P\Data\PP061324\
 Data File : PP065685.D
 Signal(s) : Signal #1: ECD1A.ch Signal #2: ECD2B.ch
 Acq On : 14 Jun 2024 01:11
 Operator : YP\AJ
 Sample : AR1660CCC500
 Misc :
 ALS Vial : 3 Sample Multiplier: 1

Instrument :
 ECD_P
ClientSampleId :
 AR1660CCC500

Integration File signal 1: autoint1.e
 Integration File signal 2: autoint2.e
 Quant Time: Jun 14 02:30:16 2024
 Quant Method : Z:\pestpcbsrv\HPCHEM1\ECD_P\methods\PP060524.M
 Quant Title : GC EXTRACTABLES
 QLast Update : Thu Jun 06 05:25:59 2024
 Response via : Initial Calibration
 Integrator: ChemStation

Volume Inj. : 2 µl
 Signal #1 Phase : ZB-MR1 Signal #2 Phase: ZB-MR2
 Signal #1 Info : 30Mx0.32mmx 0.50µ Signal #2 Info : 30M x 0.32mm x 0.25µm

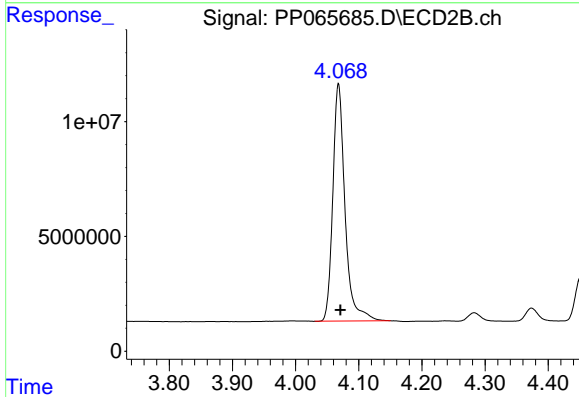




#1 Tetrachloro-m-xylene

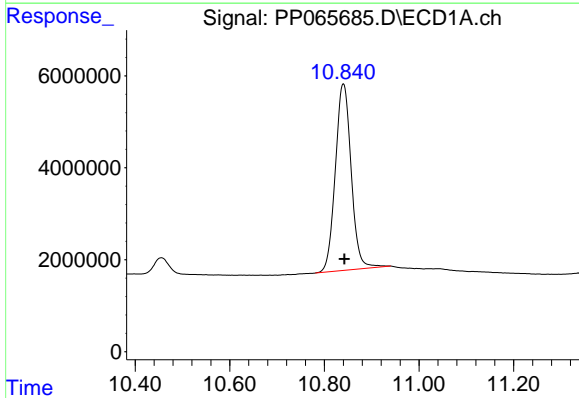
R.T.: 4.826 min
 Delta R.T.: 0.000 min
 Response: 94429296
 Conc: 49.78 ng/ml

Instrument :
 ECD_P
 ClientSampleId :
 AR1660CCC500



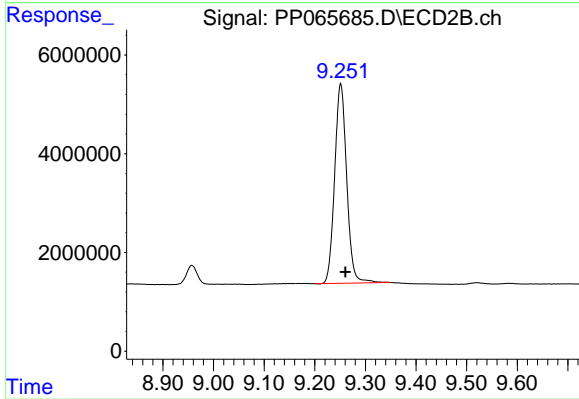
#1 Tetrachloro-m-xylene

R.T.: 4.068 min
 Delta R.T.: -0.003 min
 Response: 139051547
 Conc: 49.80 ng/ml



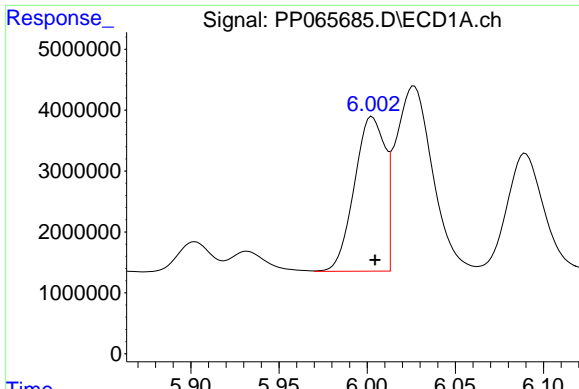
#2 Decachlorobiphenyl

R.T.: 10.840 min
 Delta R.T.: -0.002 min
 Response: 94361728
 Conc: 47.98 ng/ml



#2 Decachlorobiphenyl

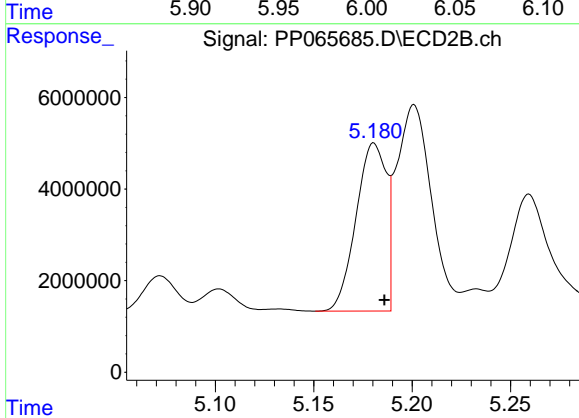
R.T.: 9.251 min
 Delta R.T.: -0.009 min
 Response: 66818621
 Conc: 45.36 ng/ml



#3 AR-1016-1

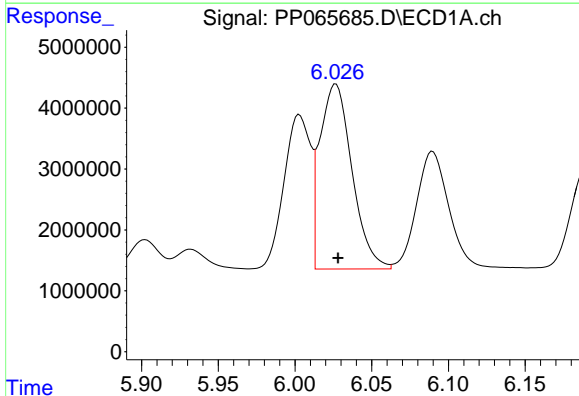
R.T.: 6.003 min
 Delta R.T.: -0.001 min
 Response: 30570007
 Conc: 470.21 ng/ml

Instrument :
 ECD_P
 ClientSampleId :
 AR1660CCC500



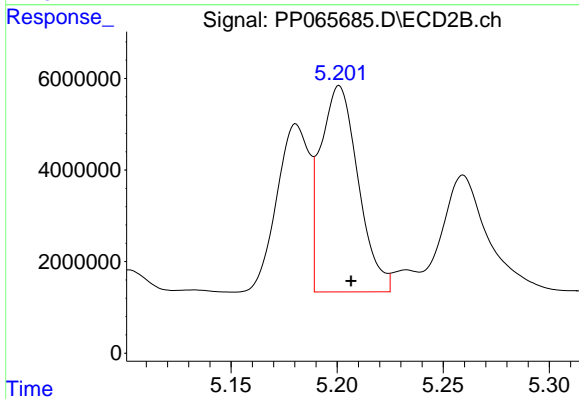
#3 AR-1016-1

R.T.: 5.181 min
 Delta R.T.: -0.005 min
 Response: 39268614
 Conc: 460.45 ng/ml



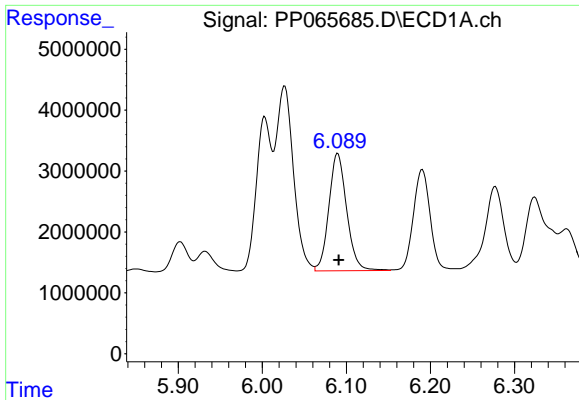
#4 AR-1016-2

R.T.: 6.027 min
 Delta R.T.: -0.002 min
 Response: 44267348
 Conc: 462.21 ng/ml



#4 AR-1016-2

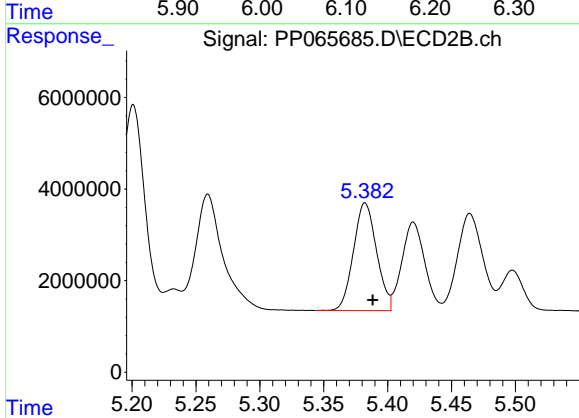
R.T.: 5.201 min
 Delta R.T.: -0.006 min
 Response: 55605906
 Conc: 470.97 ng/ml



#5 AR-1016-3

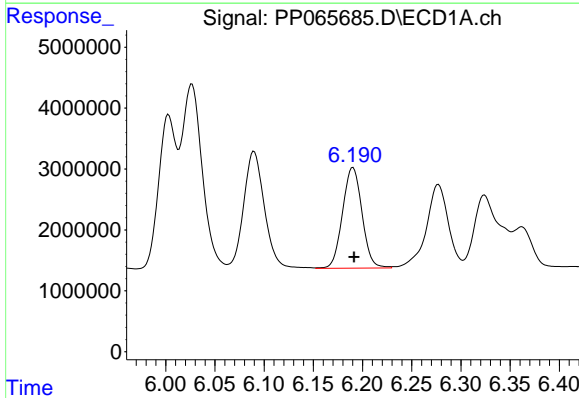
R.T.: 6.090 min
Delta R.T.: -0.001 min
Response: 28319416
Conc: 462.85 ng/ml

Instrument :
ECD_P
ClientSampleId :
AR1660CCC500



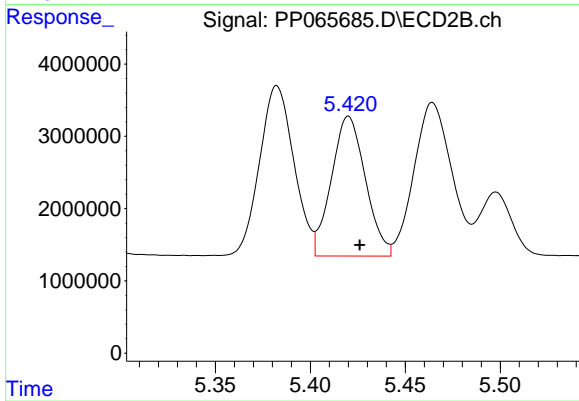
#5 AR-1016-3

R.T.: 5.382 min
Delta R.T.: -0.006 min
Response: 29580865
Conc: 460.93 ng/ml



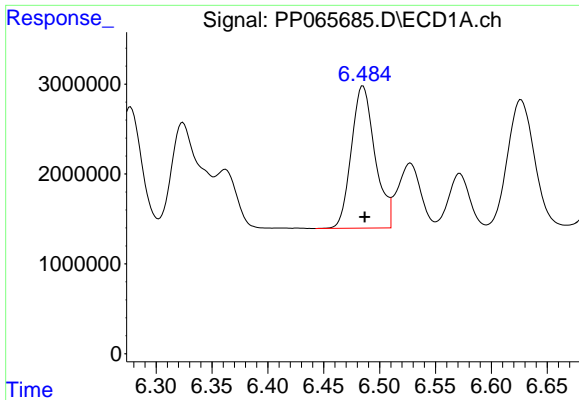
#6 AR-1016-4

R.T.: 6.190 min
Delta R.T.: -0.001 min
Response: 22801140
Conc: 463.64 ng/ml



#6 AR-1016-4

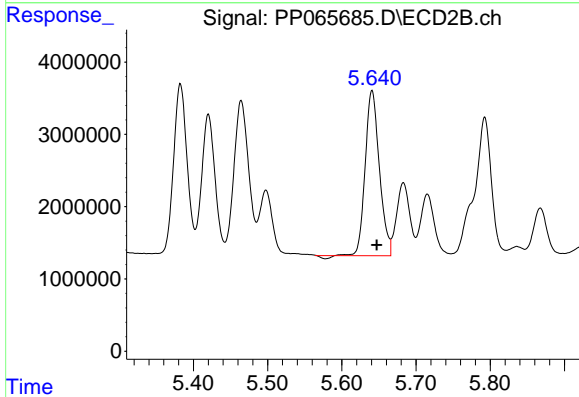
R.T.: 5.420 min
Delta R.T.: -0.006 min
Response: 24122804
Conc: 467.46 ng/ml



#7 AR-1016-5

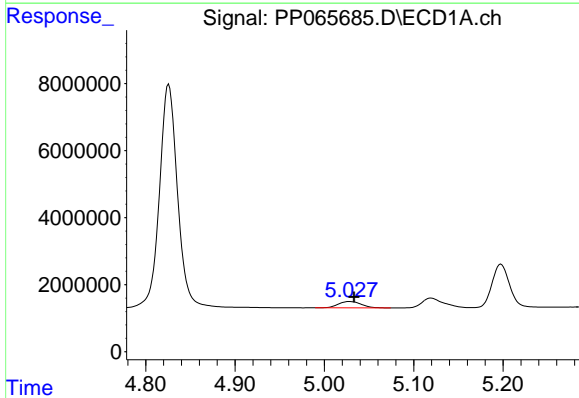
R.T.: 6.485 min
 Delta R.T.: -0.002 min
 Response: 23250070
 Conc: 463.84 ng/ml

Instrument :
 ECD_P
 ClientSampleId :
 AR1660CCC500



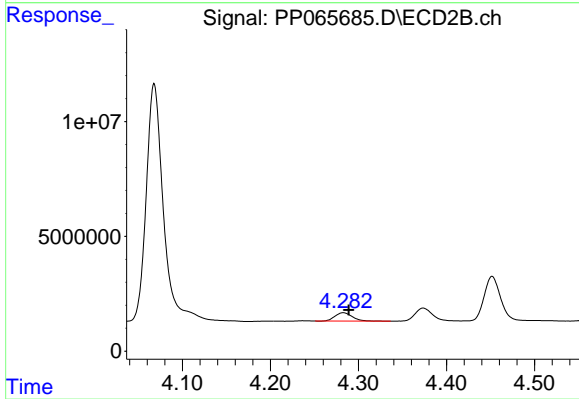
#7 AR-1016-5

R.T.: 5.641 min
 Delta R.T.: -0.006 min
 Response: 30184949
 Conc: 457.59 ng/ml



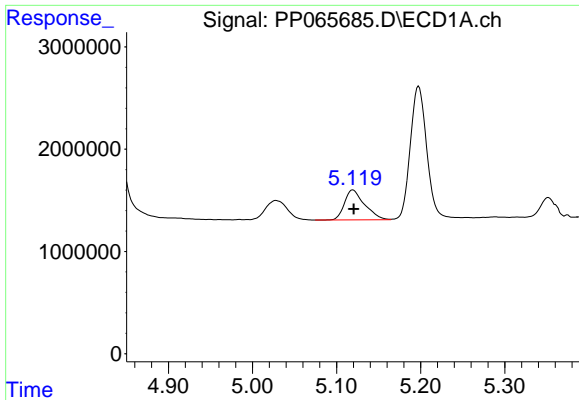
#8 AR-1221-1

R.T.: 5.028 min
 Delta R.T.: -0.005 min
 Response: 3407625
 Conc: 133.53 ng/ml



#8 AR-1221-1

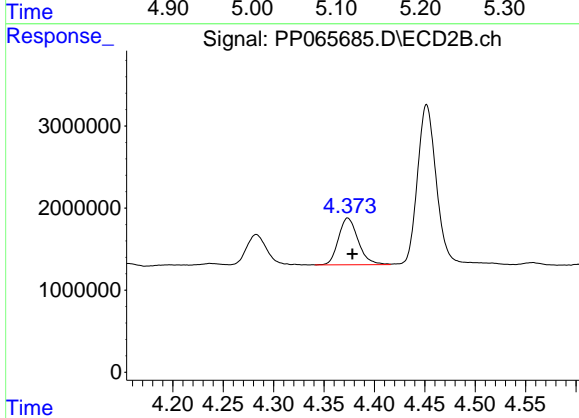
R.T.: 4.283 min
 Delta R.T.: -0.006 min
 Response: 4976477
 Conc: 143.03 ng/ml



#9 AR-1221-2

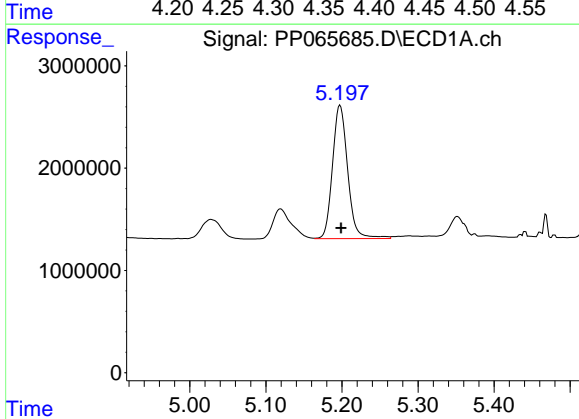
R.T.: 5.120 min
 Delta R.T.: -0.001 min
 Response: 4900928
 Conc: 253.78 ng/ml

Instrument :
 ECD_P
 ClientSampleId :
 AR1660CCC500



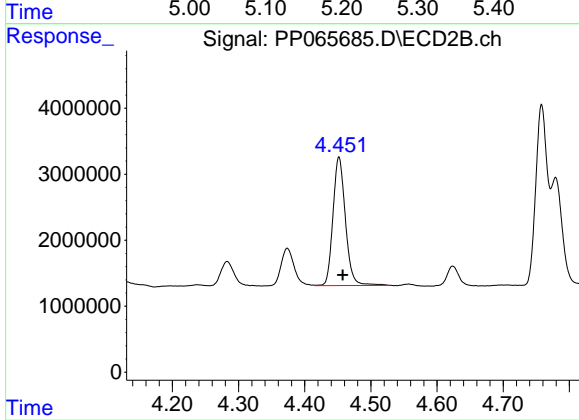
#9 AR-1221-2

R.T.: 4.374 min
 Delta R.T.: -0.005 min
 Response: 7772435
 Conc: 287.93 ng/ml



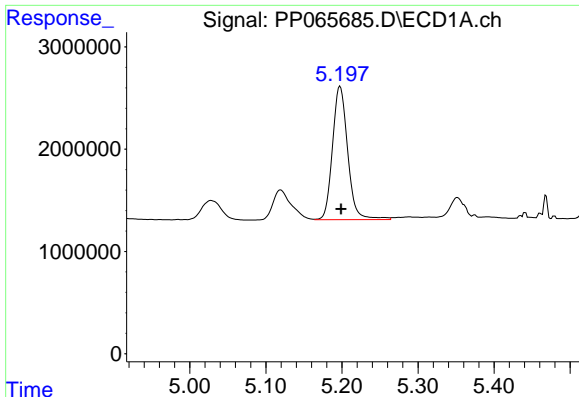
#10 AR-1221-3

R.T.: 5.198 min
 Delta R.T.: -0.001 min
 Response: 18137909
 Conc: 322.77 ng/ml



#10 AR-1221-3

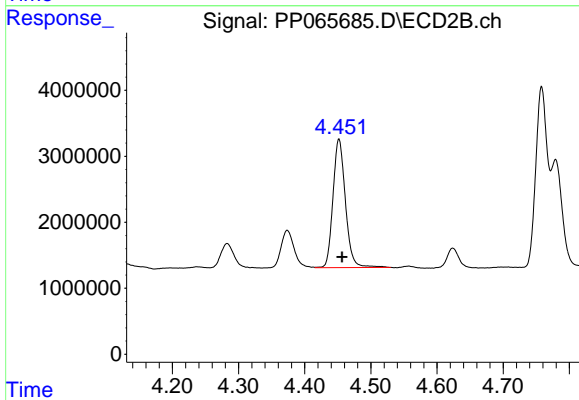
R.T.: 4.452 min
 Delta R.T.: -0.006 min
 Response: 25558525
 Conc: 329.57 ng/ml



#11 AR-1232-1

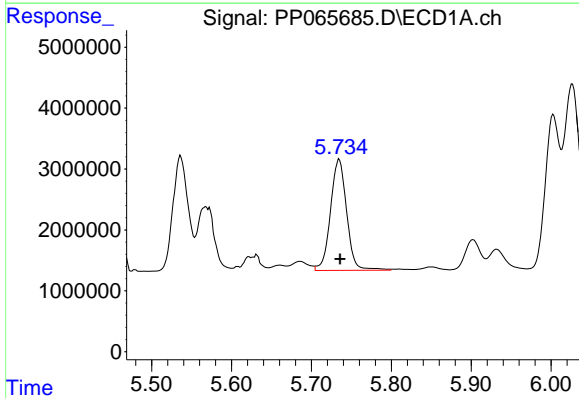
R.T.: 5.198 min
 Delta R.T.: -0.001 min
 Response: 18137909
 Conc: 400.88 ng/ml

Instrument :
 ECD_P
 ClientSampleId :
 AR1660CCC500



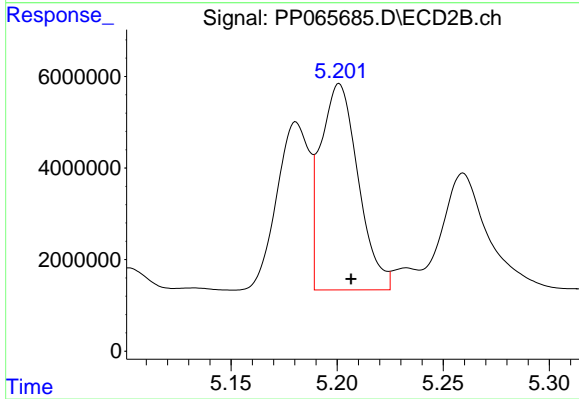
#11 AR-1232-1

R.T.: 4.452 min
 Delta R.T.: -0.005 min
 Response: 25558525
 Conc: 404.34 ng/ml



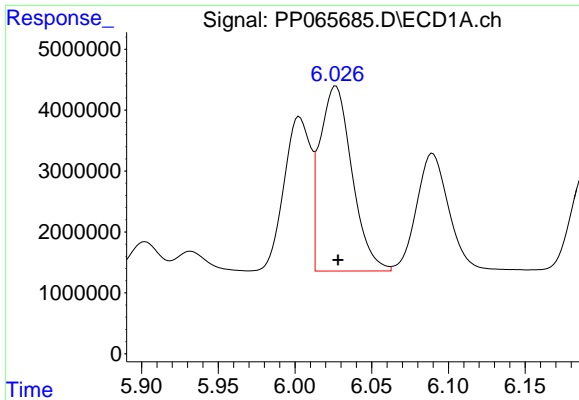
#12 AR-1232-2

R.T.: 5.735 min
 Delta R.T.: -0.001 min
 Response: 25649993
 Conc: 984.86 ng/ml



#12 AR-1232-2

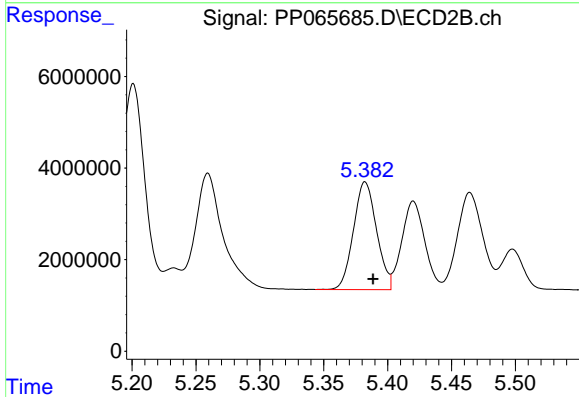
R.T.: 5.201 min
 Delta R.T.: -0.005 min
 Response: 55605906
 Conc: 996.67 ng/ml



#13 AR-1232-3

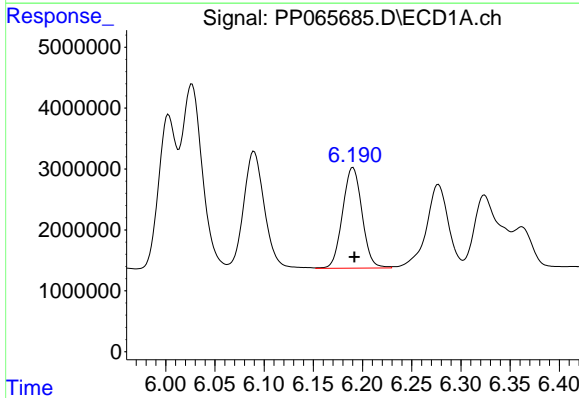
R.T.: 6.027 min
 Delta R.T.: -0.001 min
 Response: 44267348
 Conc: 978.56 ng/ml

Instrument :
 ECD_P
 ClientSampleId :
 AR1660CCC500



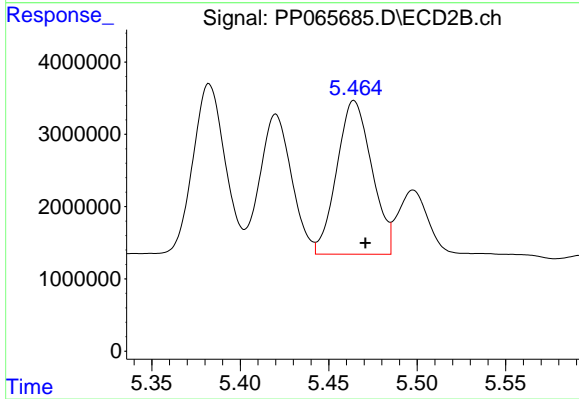
#13 AR-1232-3

R.T.: 5.382 min
 Delta R.T.: -0.006 min
 Response: 29580865
 Conc: 982.18 ng/ml



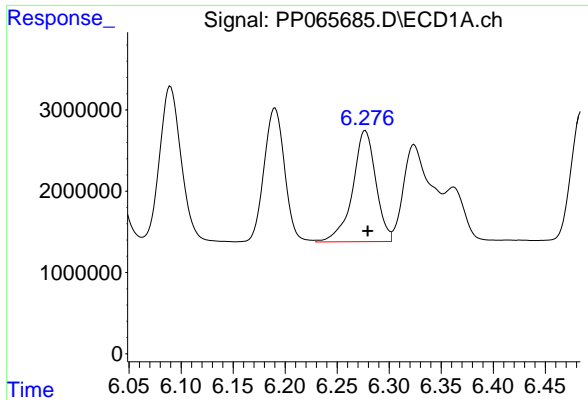
#14 AR-1232-4

R.T.: 6.190 min
 Delta R.T.: -0.001 min
 Response: 22801140
 Conc: 976.15 ng/ml



#14 AR-1232-4

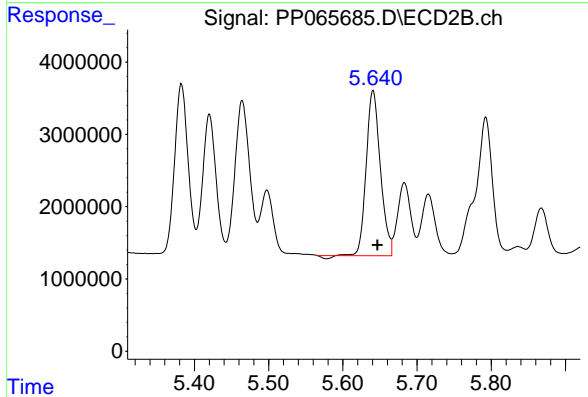
R.T.: 5.464 min
 Delta R.T.: -0.006 min
 Response: 29259869
 Conc: 1069.44 ng/ml



#15 AR-1232-5

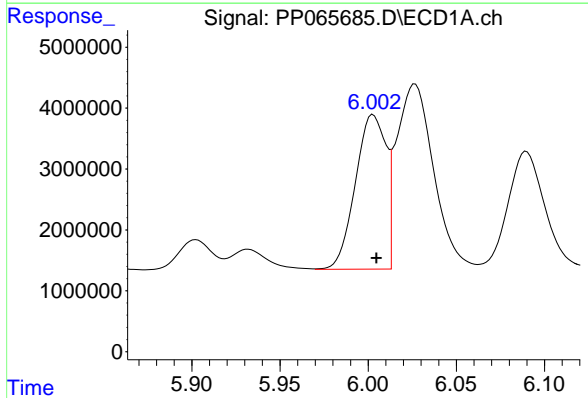
R.T.: 6.277 min
 Delta R.T.: -0.002 min
 Response: 21211986
 Conc: 1080.47 ng/ml

Instrument :
 ECD_P
 ClientSampleId :
 AR1660CCC500



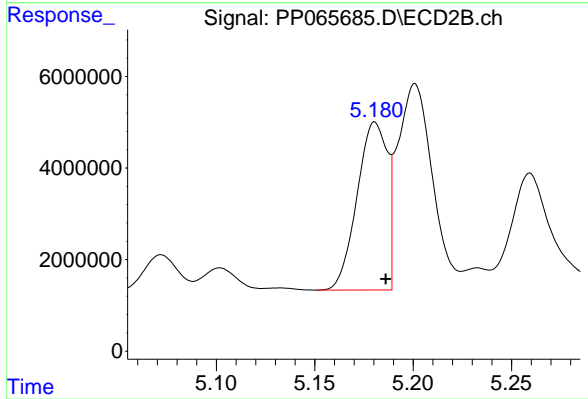
#15 AR-1232-5

R.T.: 5.641 min
 Delta R.T.: -0.006 min
 Response: 30184949
 Conc: 1032.33 ng/ml



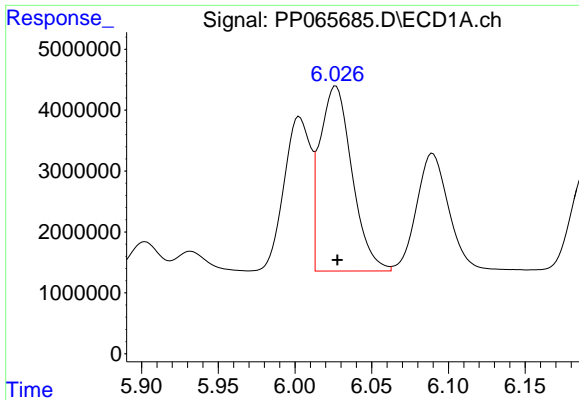
#16 AR-1242-1

R.T.: 6.003 min
 Delta R.T.: -0.002 min
 Response: 30570007
 Conc: 559.04 ng/ml



#16 AR-1242-1

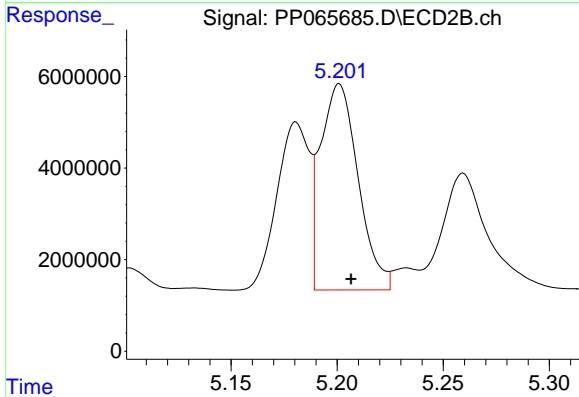
R.T.: 5.181 min
 Delta R.T.: -0.005 min
 Response: 39268614
 Conc: 546.46 ng/ml



#17 AR-1242-2

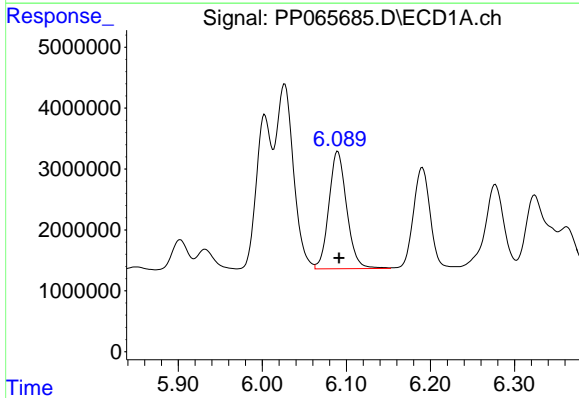
R.T.: 6.027 min
 Delta R.T.: -0.001 min
 Response: 44267348
 Conc: 558.22 ng/ml

Instrument :
 ECD_P
 ClientSampleId :
 AR1660CCC500



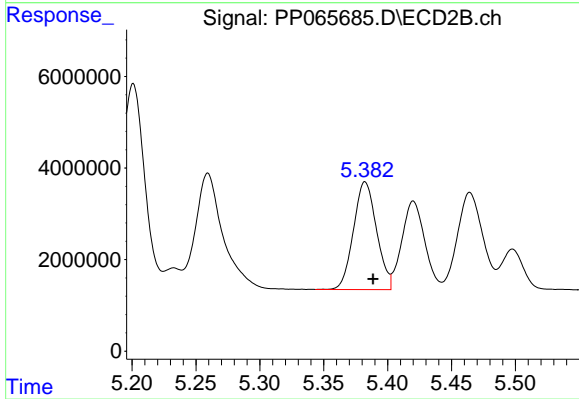
#17 AR-1242-2

R.T.: 5.201 min
 Delta R.T.: -0.005 min
 Response: 55605906
 Conc: 559.15 ng/ml



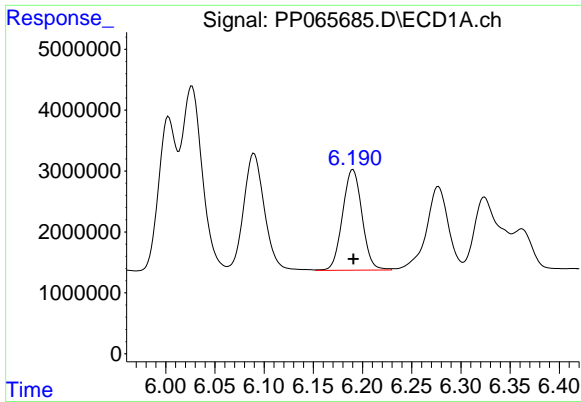
#18 AR-1242-3

R.T.: 6.090 min
 Delta R.T.: -0.002 min
 Response: 28319416
 Conc: 560.25 ng/ml



#18 AR-1242-3

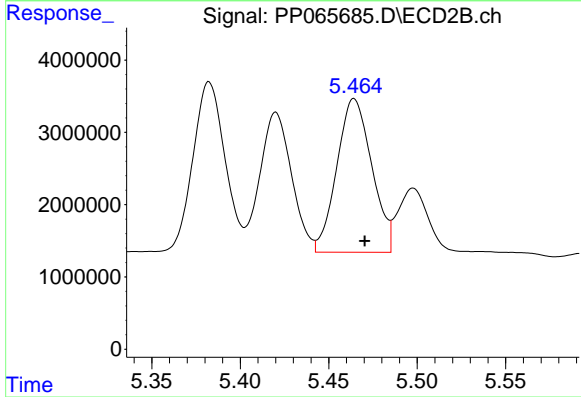
R.T.: 5.382 min
 Delta R.T.: -0.006 min
 Response: 29580865
 Conc: 549.94 ng/ml



#19 AR-1242-4

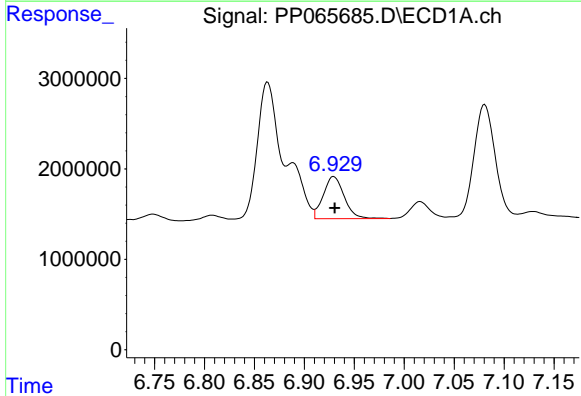
R.T.: 6.190 min
 Delta R.T.: 0.000 min
 Response: 22801140
 Conc: 555.65 ng/ml

Instrument :
 ECD_P
 ClientSampleId :
 AR1660CCC500



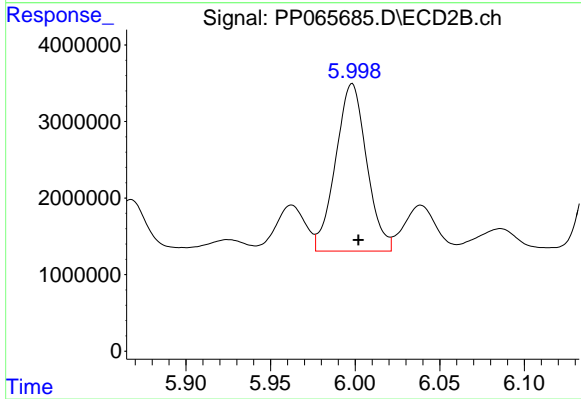
#19 AR-1242-4

R.T.: 5.464 min
 Delta R.T.: -0.006 min
 Response: 29259869
 Conc: 549.38 ng/ml



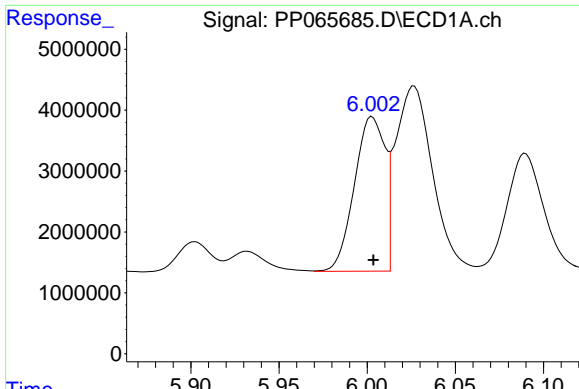
#20 AR-1242-5

R.T.: 6.929 min
 Delta R.T.: 0.000 min
 Response: 6789902
 Conc: 155.65 ng/ml



#20 AR-1242-5

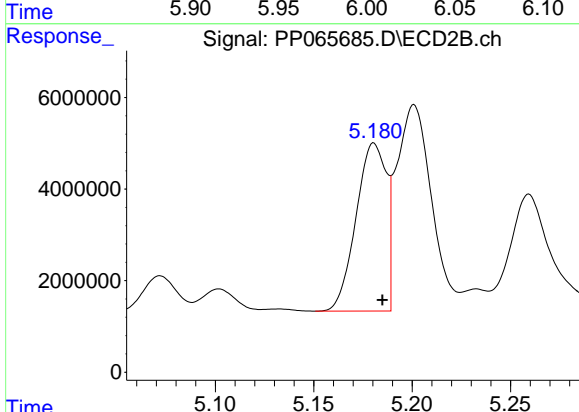
R.T.: 5.998 min
 Delta R.T.: -0.004 min
 Response: 27913564
 Conc: 469.78 ng/ml



#21 AR-1248-1

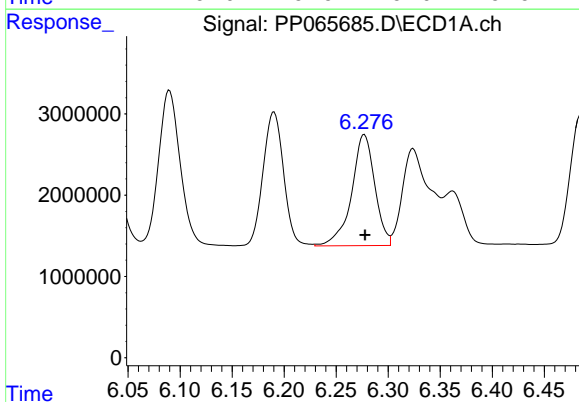
R.T.: 6.003 min
 Delta R.T.: 0.000 min
 Response: 30570007
 Conc: 751.67 ng/ml

Instrument :
 ECD_P
 ClientSampleId :
 AR1660CCC500



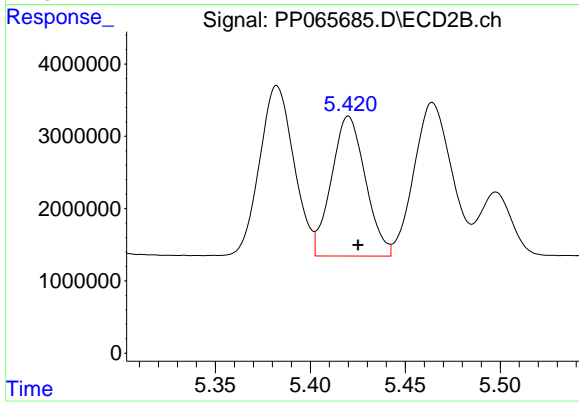
#21 AR-1248-1

R.T.: 5.181 min
 Delta R.T.: -0.004 min
 Response: 39268614
 Conc: 735.72 ng/ml



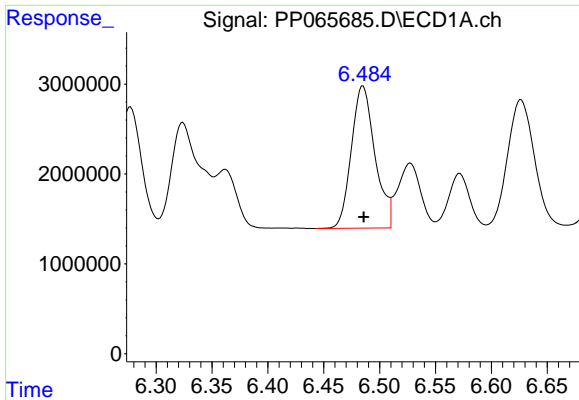
#22 AR-1248-2

R.T.: 6.277 min
 Delta R.T.: 0.000 min
 Response: 21211986
 Conc: 340.35 ng/ml



#22 AR-1248-2

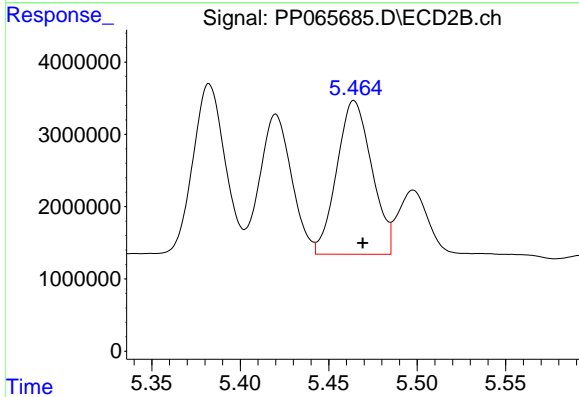
R.T.: 5.420 min
 Delta R.T.: -0.005 min
 Response: 24122804
 Conc: 327.73 ng/ml



#23 AR-1248-3

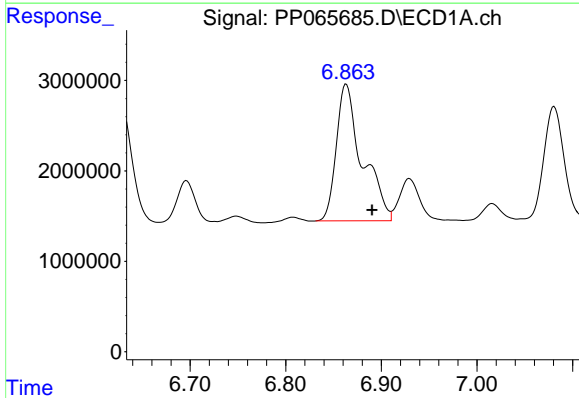
R.T.: 6.485 min
 Delta R.T.: 0.000 min
 Response: 23250070
 Conc: 345.26 ng/ml

Instrument :
 ECD_P
 ClientSampleId :
 AR1660CCC500



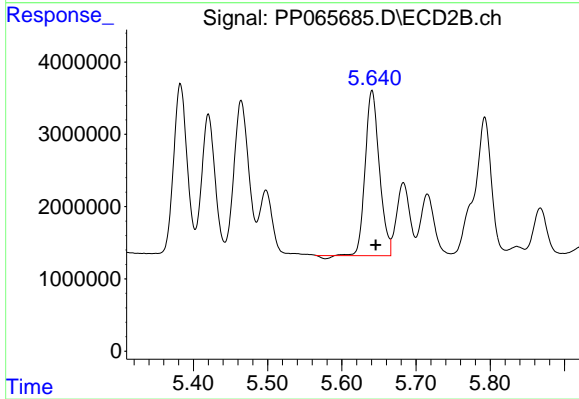
#23 AR-1248-3

R.T.: 5.464 min
 Delta R.T.: -0.005 min
 Response: 29259869
 Conc: 382.89 ng/ml



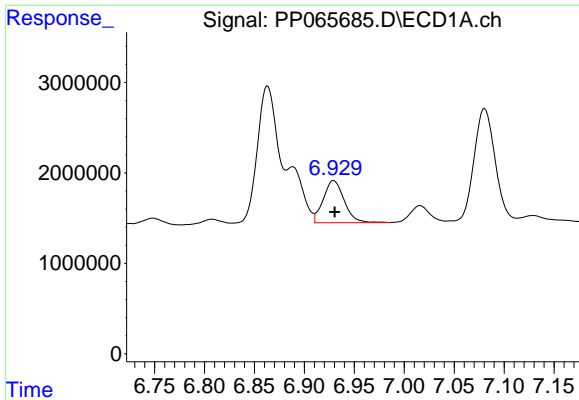
#24 AR-1248-4

R.T.: 6.863 min
 Delta R.T.: -0.027 min
 Response: 28400257
 Conc: 398.91 ng/ml



#24 AR-1248-4

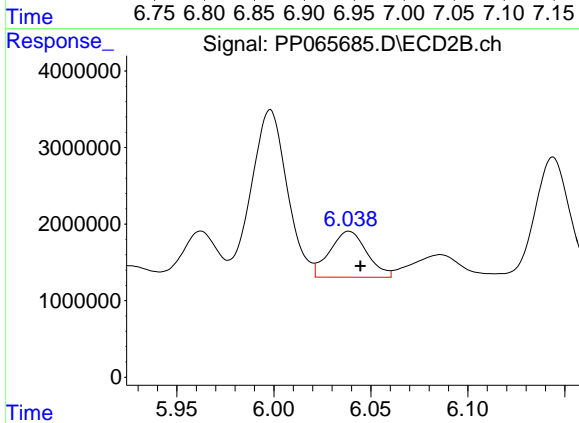
R.T.: 5.641 min
 Delta R.T.: -0.005 min
 Response: 30184949
 Conc: 343.34 ng/ml



#25 AR-1248-5

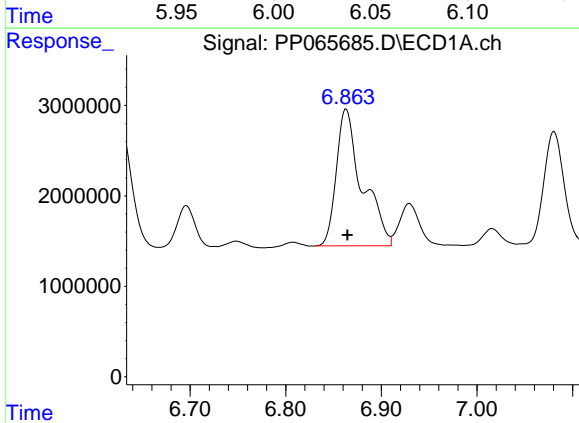
R.T.: 6.929 min
 Delta R.T.: -0.001 min
 Response: 6789902
 Conc: 97.95 ng/ml

Instrument :
 ECD_P
 ClientSampleId :
 AR1660CCC500



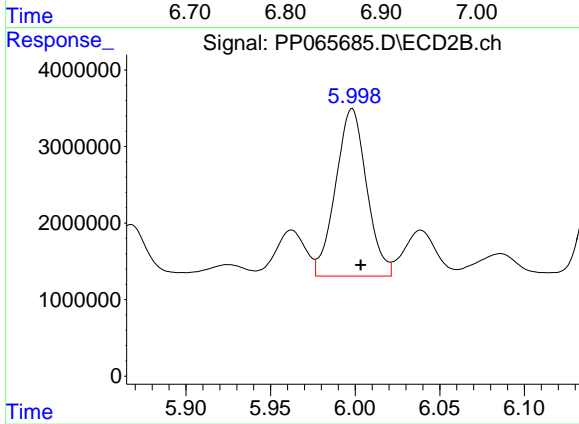
#25 AR-1248-5

R.T.: 6.039 min
 Delta R.T.: -0.006 min
 Response: 8002240
 Conc: 100.31 ng/ml



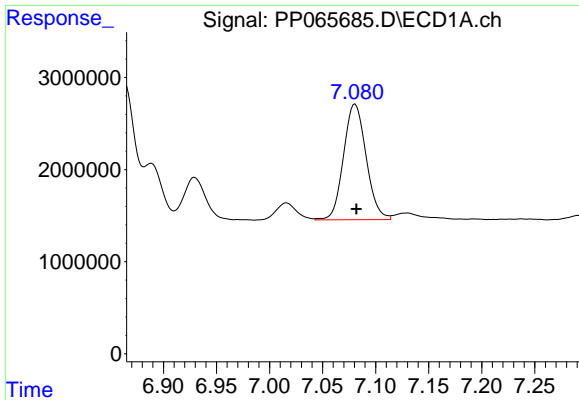
#26 AR-1254-1

R.T.: 6.863 min
 Delta R.T.: -0.001 min
 Response: 2840257
 Conc: 362.53 ng/ml



#26 AR-1254-1

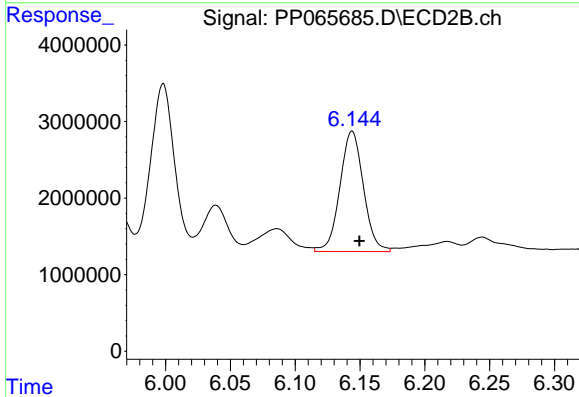
R.T.: 5.998 min
 Delta R.T.: -0.005 min
 Response: 27913564
 Conc: 226.54 ng/ml



#27 AR-1254-2

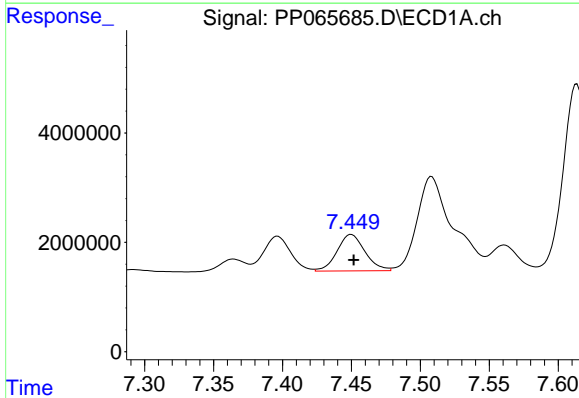
R.T.: 7.081 min
 Delta R.T.: -0.001 min
 Response: 18617901
 Conc: 157.60 ng/ml

Instrument :
 ECD_P
 ClientSampleId :
 AR1660CCC500



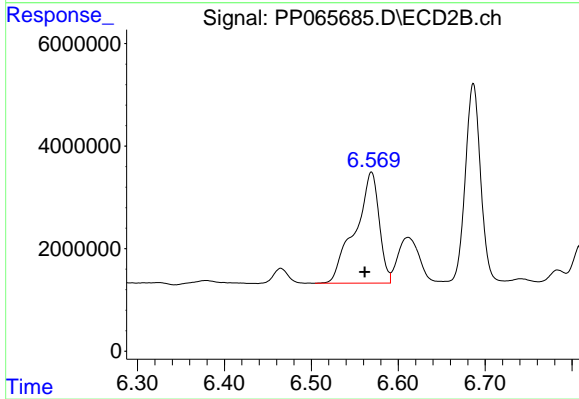
#27 AR-1254-2

R.T.: 6.144 min
 Delta R.T.: -0.006 min
 Response: 19839438
 Conc: 188.42 ng/ml



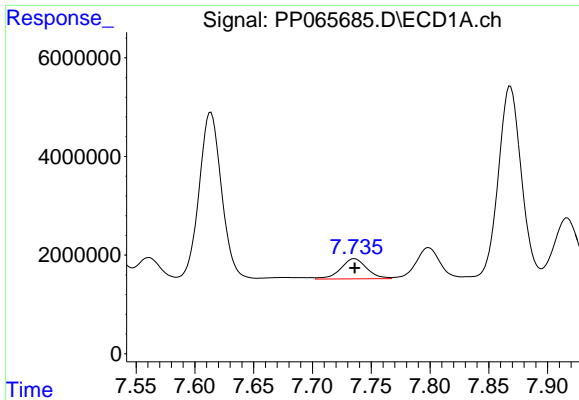
#28 AR-1254-3

R.T.: 7.450 min
 Delta R.T.: -0.002 min
 Response: 9437311
 Conc: 77.33 ng/ml



#28 AR-1254-3

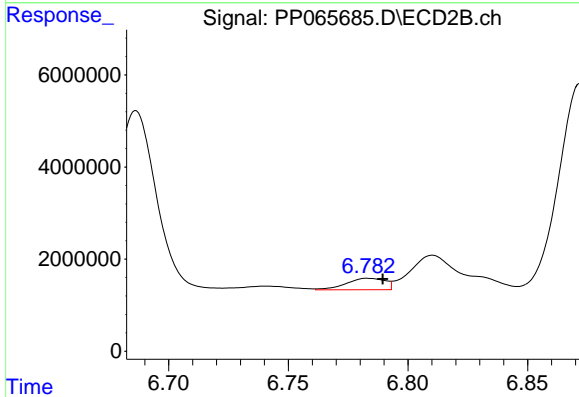
R.T.: 6.569 min
 Delta R.T.: 0.008 min
 Response: 41587906
 Conc: 262.81 ng/ml



#29 AR-1254-4

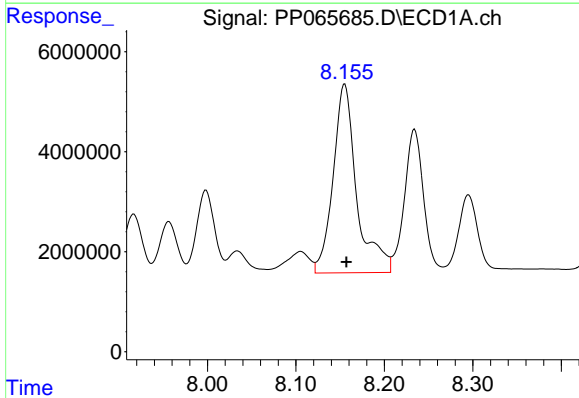
R.T.: 7.736 min
 Delta R.T.: 0.000 min
 Response: 6330243
 Conc: 71.19 ng/ml

Instrument :
 ECD_P
 ClientSampleId :
 AR1660CCC500



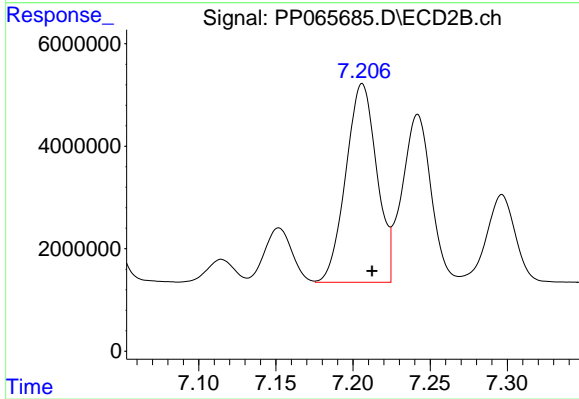
#29 AR-1254-4

R.T.: 6.783 min
 Delta R.T.: -0.006 min
 Response: 2816190
 Conc: 30.50 ng/ml



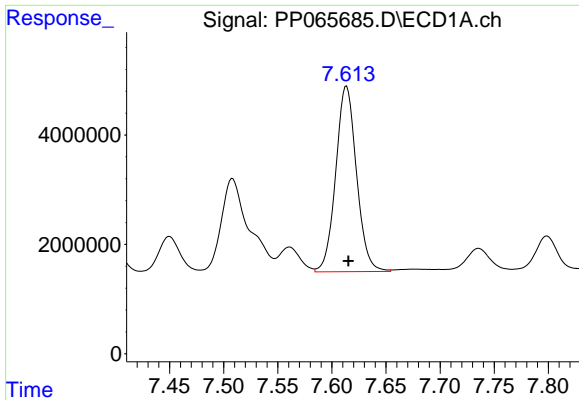
#30 AR-1254-5

R.T.: 8.155 min
 Delta R.T.: -0.002 min
 Response: 69974196
 Conc: 714.33 ng/ml



#30 AR-1254-5

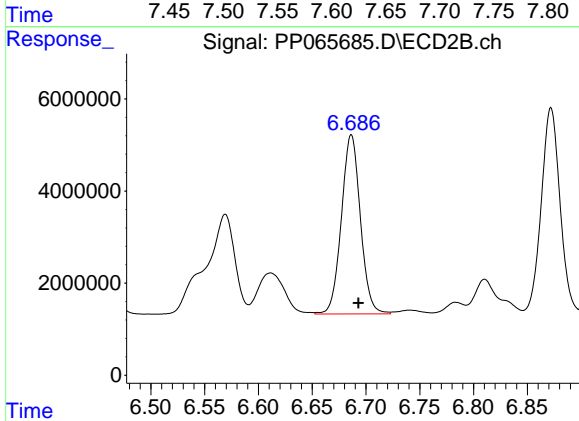
R.T.: 7.206 min
 Delta R.T.: -0.006 min
 Response: 54139702
 Conc: 423.00 ng/ml



#31 AR-1260-1

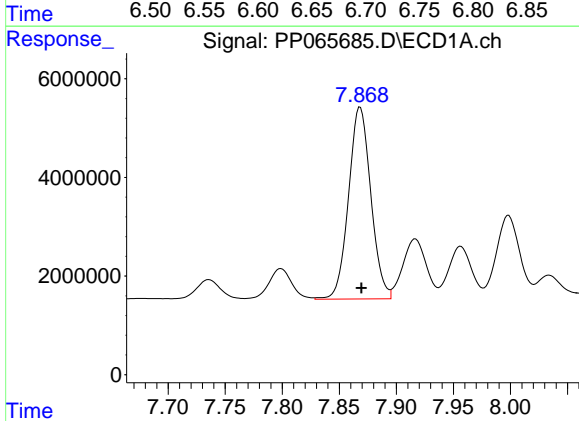
R.T.: 7.614 min
 Delta R.T.: -0.002 min
 Response: 45348402
 Conc: 468.20 ng/ml

Instrument :
 ECD_P
 ClientSampleId :
 AR1660CCC500



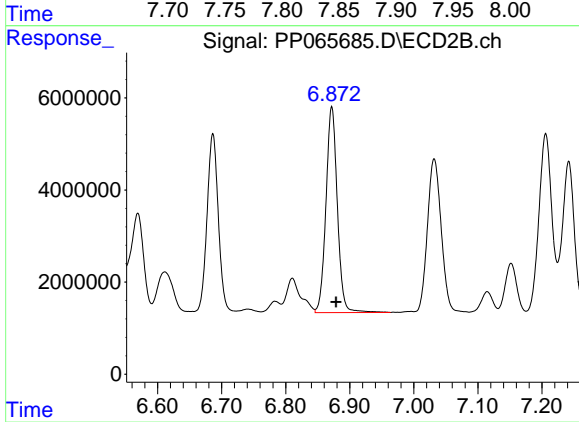
#31 AR-1260-1

R.T.: 6.686 min
 Delta R.T.: -0.007 min
 Response: 47821209
 Conc: 450.63 ng/ml



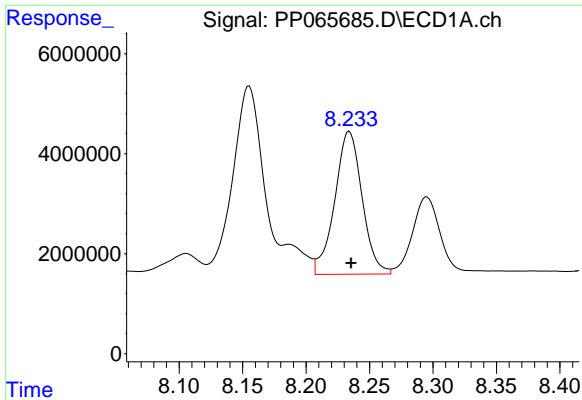
#32 AR-1260-2

R.T.: 7.868 min
 Delta R.T.: -0.001 min
 Response: 52812328
 Conc: 471.03 ng/ml



#32 AR-1260-2

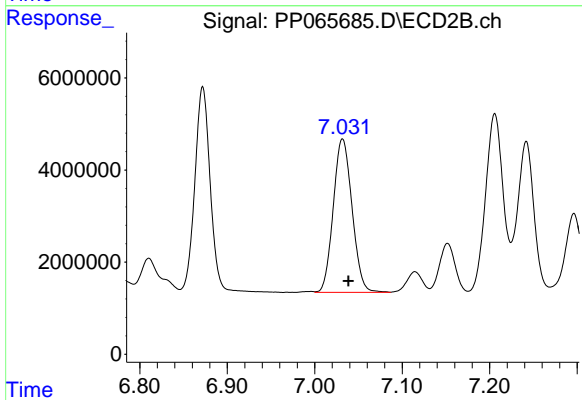
R.T.: 6.872 min
 Delta R.T.: -0.006 min
 Response: 55250162
 Conc: 448.00 ng/ml



#33 AR-1260-3

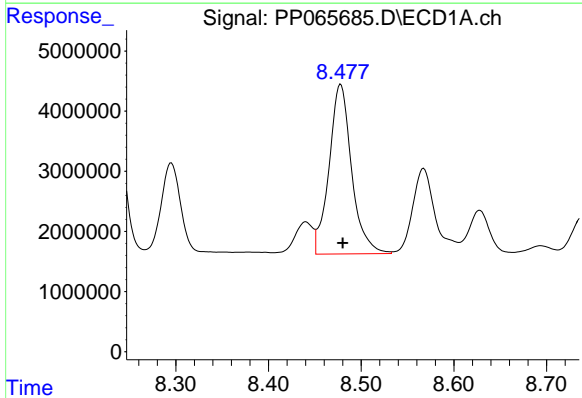
R.T.: 8.234 min
Delta R.T.: -0.001 min
Response: 42965191
Conc: 492.11 ng/ml

Instrument :
ECD_P
ClientSampleId :
AR1660CCC500



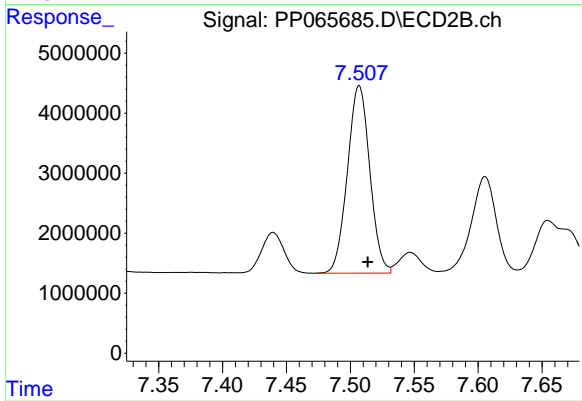
#33 AR-1260-3

R.T.: 7.032 min
Delta R.T.: -0.006 min
Response: 49691374
Conc: 428.46 ng/ml



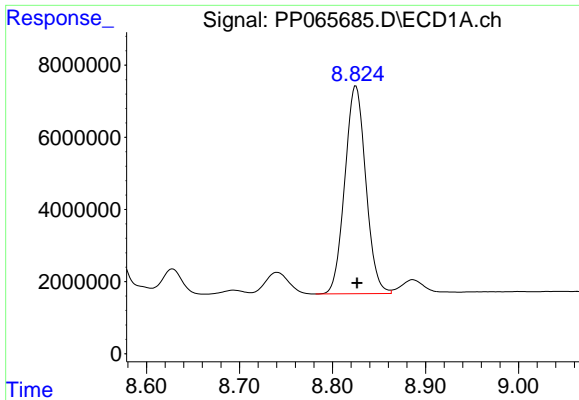
#34 AR-1260-4

R.T.: 8.478 min
Delta R.T.: -0.002 min
Response: 47797482
Conc: 476.97 ng/ml



#34 AR-1260-4

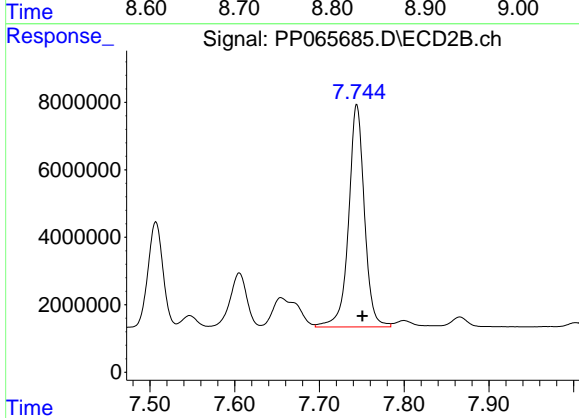
R.T.: 7.507 min
Delta R.T.: -0.007 min
Response: 38141669
Conc: 433.06 ng/ml



#35 AR-1260-5

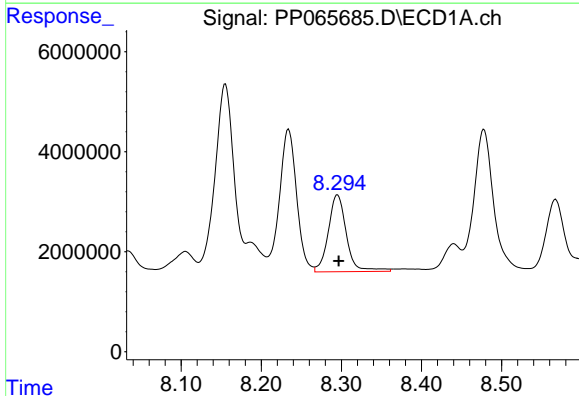
R.T.: 8.825 min
Delta R.T.: -0.001 min
Response: 90138080
Conc: 477.97 ng/ml

Instrument :
ECD_P
ClientSampleId :
AR1660CCC500



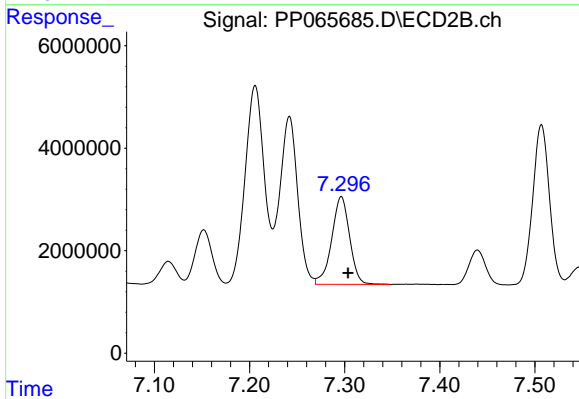
#35 AR-1260-5

R.T.: 7.744 min
Delta R.T.: -0.007 min
Response: 85362447
Conc: 445.96 ng/ml



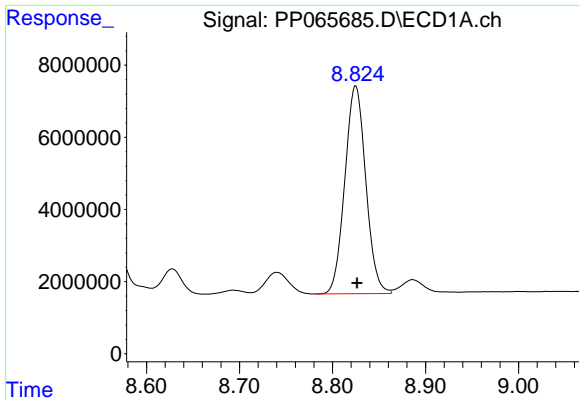
#36 AR-1262-1

R.T.: 8.295 min
Delta R.T.: -0.001 min
Response: 24270428
Conc: 452.99 ng/ml



#36 AR-1262-1

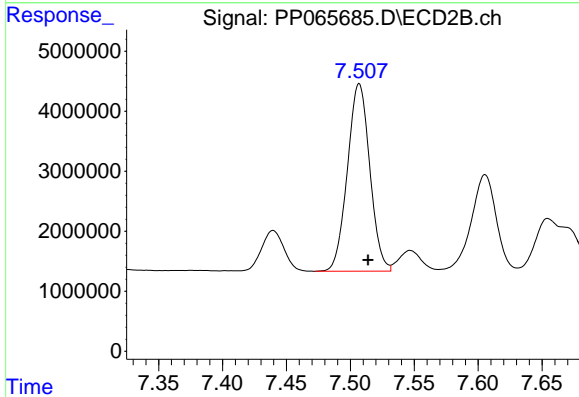
R.T.: 7.296 min
Delta R.T.: -0.007 min
Response: 22450725
Conc: 403.66 ng/ml



#37 AR-1262-2

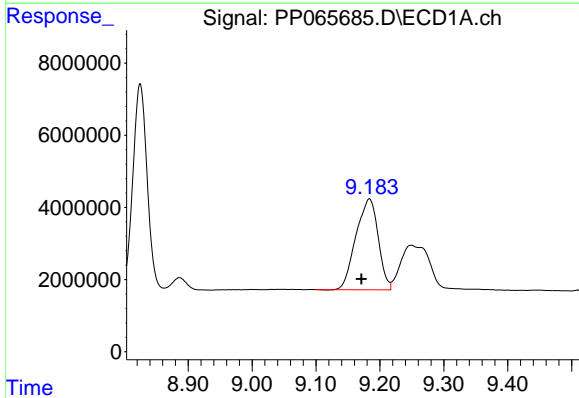
R.T.: 8.825 min
 Delta R.T.: -0.001 min
 Response: 90138080
 Conc: 424.92 ng/ml

Instrument :
 ECD_P
 ClientSampleId :
 AR1660CCC500



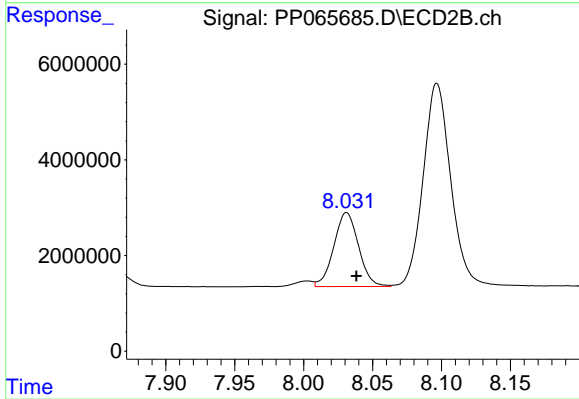
#37 AR-1262-2

R.T.: 7.507 min
 Delta R.T.: -0.007 min
 Response: 38141669
 Conc: 342.30 ng/ml



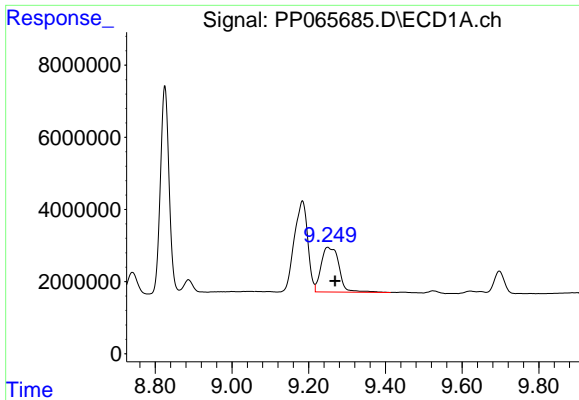
#38 AR-1262-3

R.T.: 9.184 min
 Delta R.T.: 0.013 min
 Response: 61011099
 Conc: 398.51 ng/ml



#38 AR-1262-3

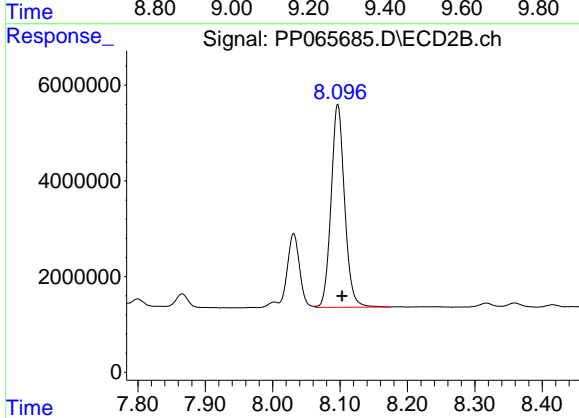
R.T.: 8.031 min
 Delta R.T.: -0.007 min
 Response: 19322009
 Conc: 227.45 ng/ml



#39 AR-1262-4

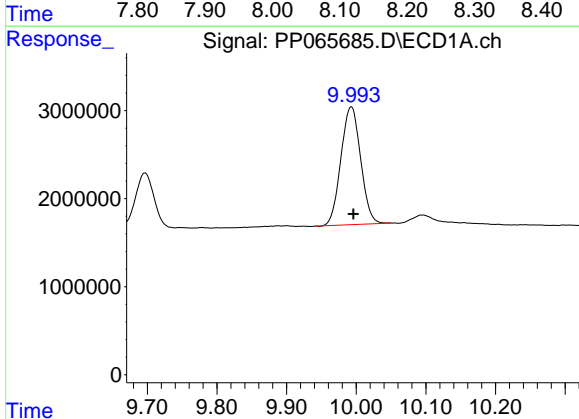
R.T.: 9.249 min
 Delta R.T.: -0.020 min
 Response: 40136032
 Conc: 331.26 ng/ml

Instrument :
 ECD_P
 ClientSampleId :
 AR1660CCC500



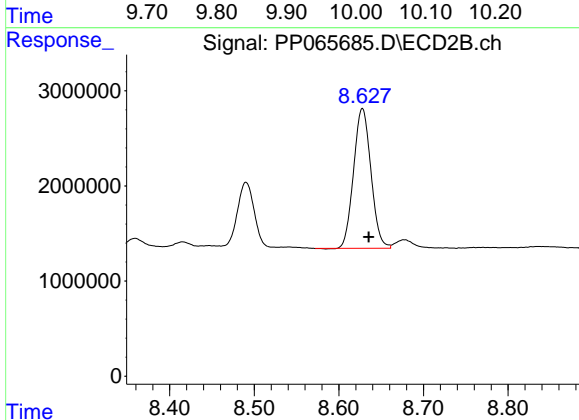
#39 AR-1262-4

R.T.: 8.097 min
 Delta R.T.: -0.006 min
 Response: 59278116
 Conc: 386.14 ng/ml



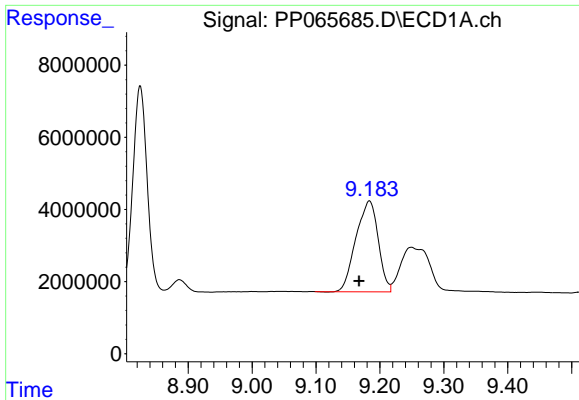
#40 AR-1262-5

R.T.: 9.993 min
 Delta R.T.: -0.003 min
 Response: 26367410
 Conc: 324.66 ng/ml



#40 AR-1262-5

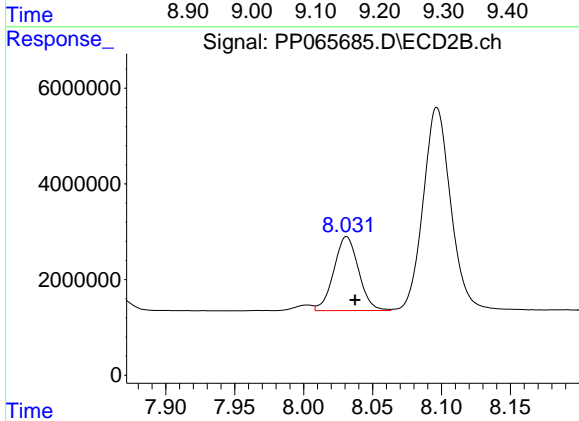
R.T.: 8.628 min
 Delta R.T.: -0.008 min
 Response: 20977343
 Conc: 298.68 ng/ml



#41 AR-1268-1

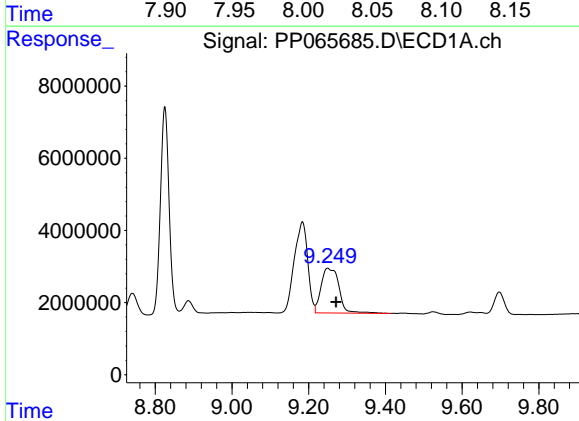
R.T.: 9.184 min
 Delta R.T.: 0.016 min
 Response: 61011099
 Conc: 240.20 ng/ml

Instrument :
 ECD_P
 ClientSampleId :
 AR1660CCC500



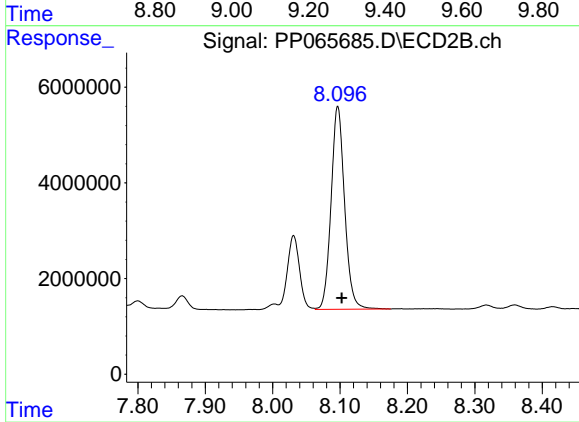
#41 AR-1268-1

R.T.: 8.031 min
 Delta R.T.: -0.006 min
 Response: 19322009
 Conc: 83.50 ng/ml



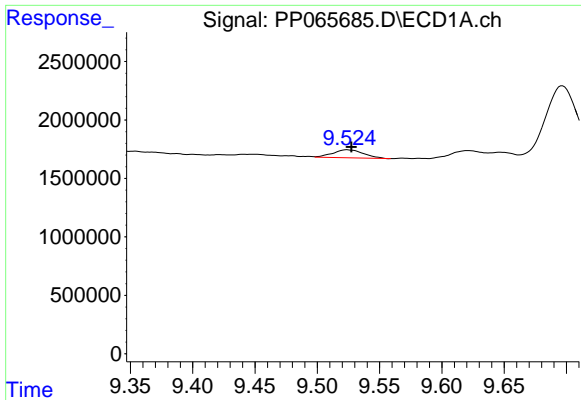
#42 AR-1268-2

R.T.: 9.249 min
 Delta R.T.: -0.023 min
 Response: 40136032
 Conc: 169.90 ng/ml



#42 AR-1268-2

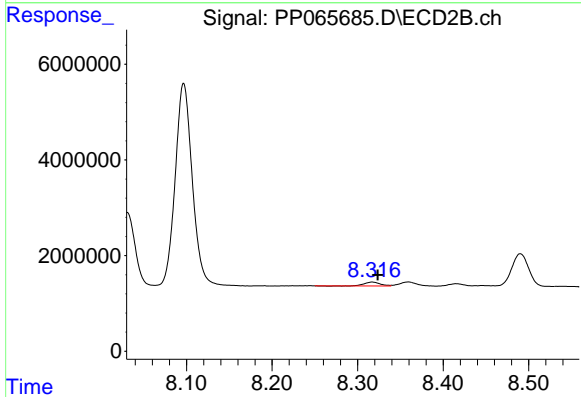
R.T.: 8.097 min
 Delta R.T.: -0.006 min
 Response: 59278116
 Conc: 282.45 ng/ml



#43 AR-1268-3

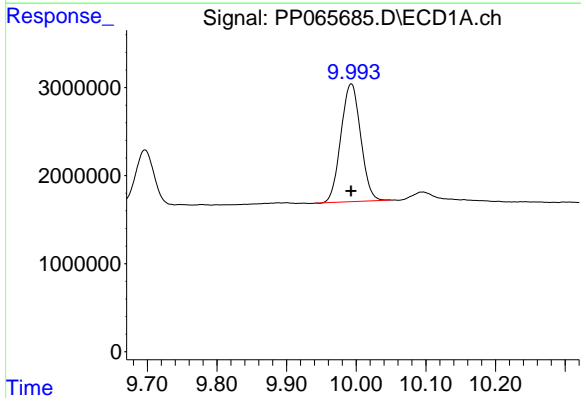
R.T.: 9.524 min
 Delta R.T.: -0.003 min
 Response: 1167365
 Conc: 5.75 ng/ml

Instrument :
 ECD_P
 ClientSampleId :
 AR1660CCC500



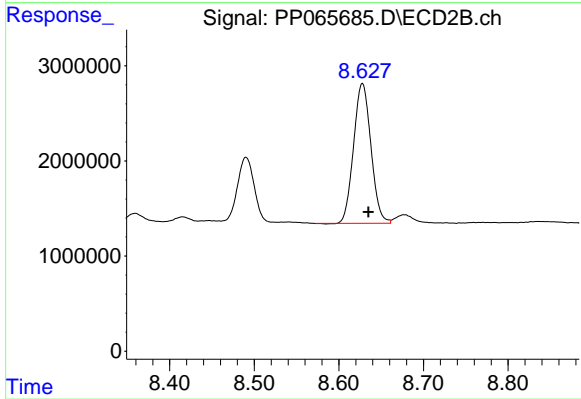
#43 AR-1268-3

R.T.: 8.317 min
 Delta R.T.: -0.007 min
 Response: 1054256
 Conc: 6.03 ng/ml



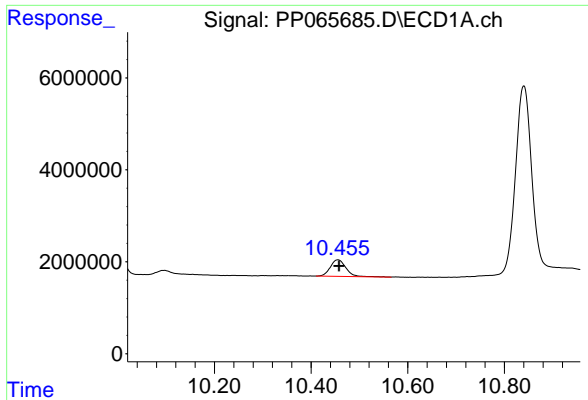
#44 AR-1268-4

R.T.: 9.993 min
 Delta R.T.: 0.000 min
 Response: 26367410
 Conc: 316.41 ng/ml



#44 AR-1268-4

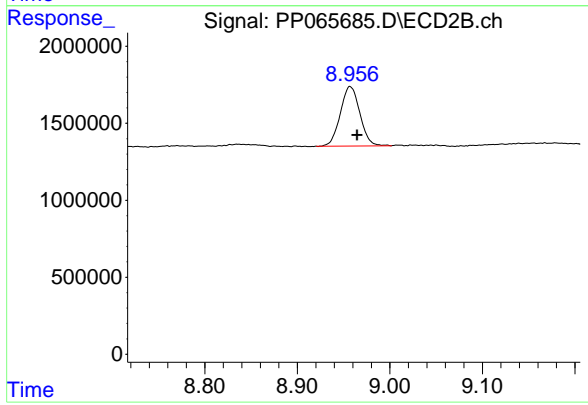
R.T.: 8.628 min
 Delta R.T.: -0.007 min
 Response: 20977343
 Conc: 276.68 ng/ml



#45 AR-1268-5

R.T.: 10.455 min
Delta R.T.: -0.003 min
Response: 8090293
Conc: 12.18 ng/ml

Instrument :
ECD_P
ClientSampleId :
AR1660CCC500



#45 AR-1268-5

R.T.: 8.957 min
Delta R.T.: -0.007 min
Response: 5668144
Conc: 10.82 ng/ml