

Data Path : Z:\pestpcbsrv\HPCHEM1\ECD_P\Data\PP061324\
 Data File : PP065683.D
 Signal(s) : Signal #1: ECD1A.ch Signal #2: ECD2B.ch
 Acq On : 13 Jun 2024 23:53
 Operator : YP\AJ
 Sample : P2855-10 10X
 Misc :
 ALS Vial : 29 Sample Multiplier: 1

Instrument :
 ECD_P
ClientSampleId :
 ARIEL-CABLE-1-4

Manual Integrations
APPROVED

Reviewed By :Yogesh Patel 06/14/2024
 Supervised By :Ankita Jodhani 06/14/2024

Integration File signal 1: autoint1.e
 Integration File signal 2: autoint2.e
 Quant Time: Jun 14 00:55:53 2024
 Quant Method : Z:\pestpcbsrv\HPCHEM1\ECD_P\methods\PP060524.M
 Quant Title : GC EXTRACTABLES
 QLast Update : Thu Jun 06 05:25:59 2024
 Response via : Initial Calibration
 Integrator: ChemStation

Volume Inj. : 2 µl
 Signal #1 Phase : ZB-MR1 Signal #2 Phase: ZB-MR2
 Signal #1 Info : 30Mx0.32mmx 0.50µ Signal #2 Info : 30M x 0.32mm x 0.25µm

Compound	RT#1	RT#2	Resp#1	Resp#2	ng/ml	ng/ml

System Monitoring Compounds						
1) SA Tetrachlo...	4.824	4.068	2642232	3859351	1.393m	1.382m
2) SA Decachlor...	10.838	9.252	2885500	1828531	1.467m	1.241m

Target Compounds

(f)=RT Delta > 1/2 Window (#)=Amounts differ by > 25% (m)=manual int.

Data Path : Z:\pestpcbsrv\HPCHEM1\ECD_P\Data\PP061324\
 Data File : PP065683.D
 Signal(s) : Signal #1: ECD1A.ch Signal #2: ECD2B.ch
 Acq On : 13 Jun 2024 23:53
 Operator : YP\AJ
 Sample : P2855-10 10X
 Misc :
 ALS Vial : 29 Sample Multiplier: 1

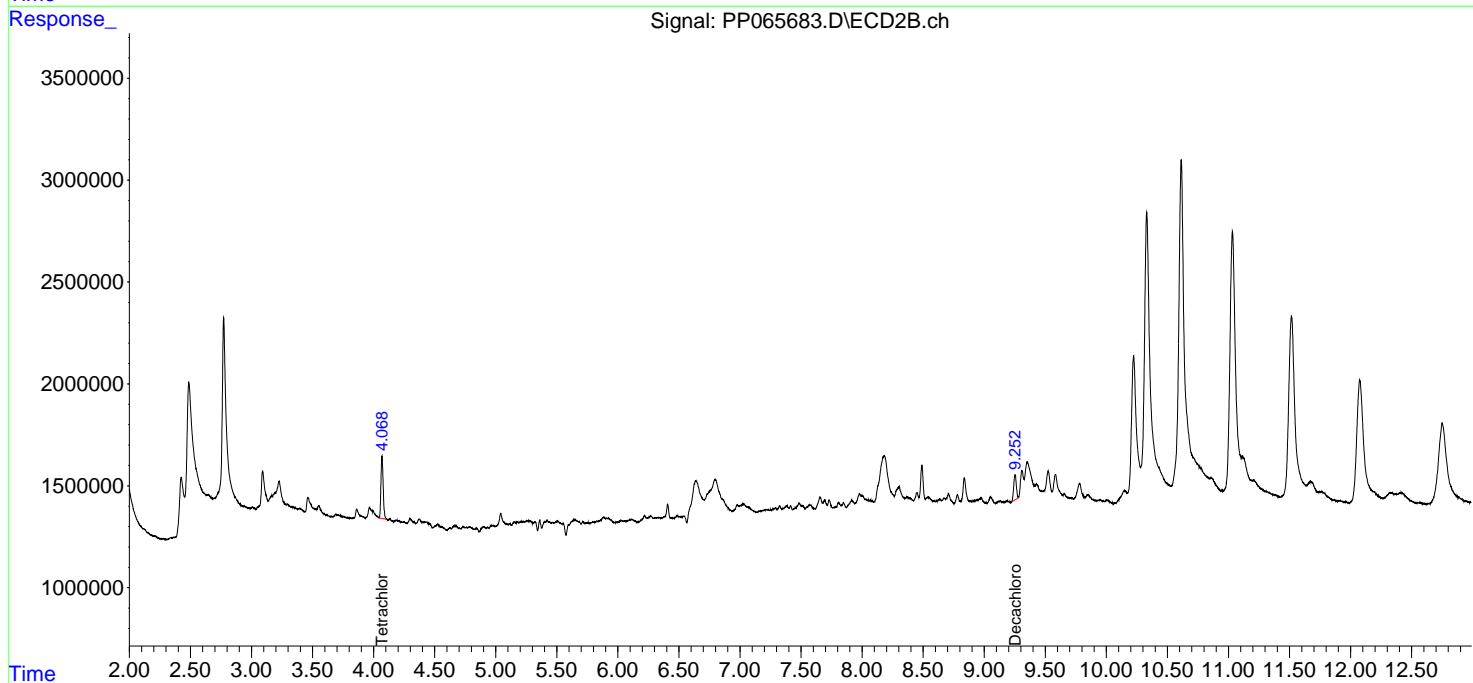
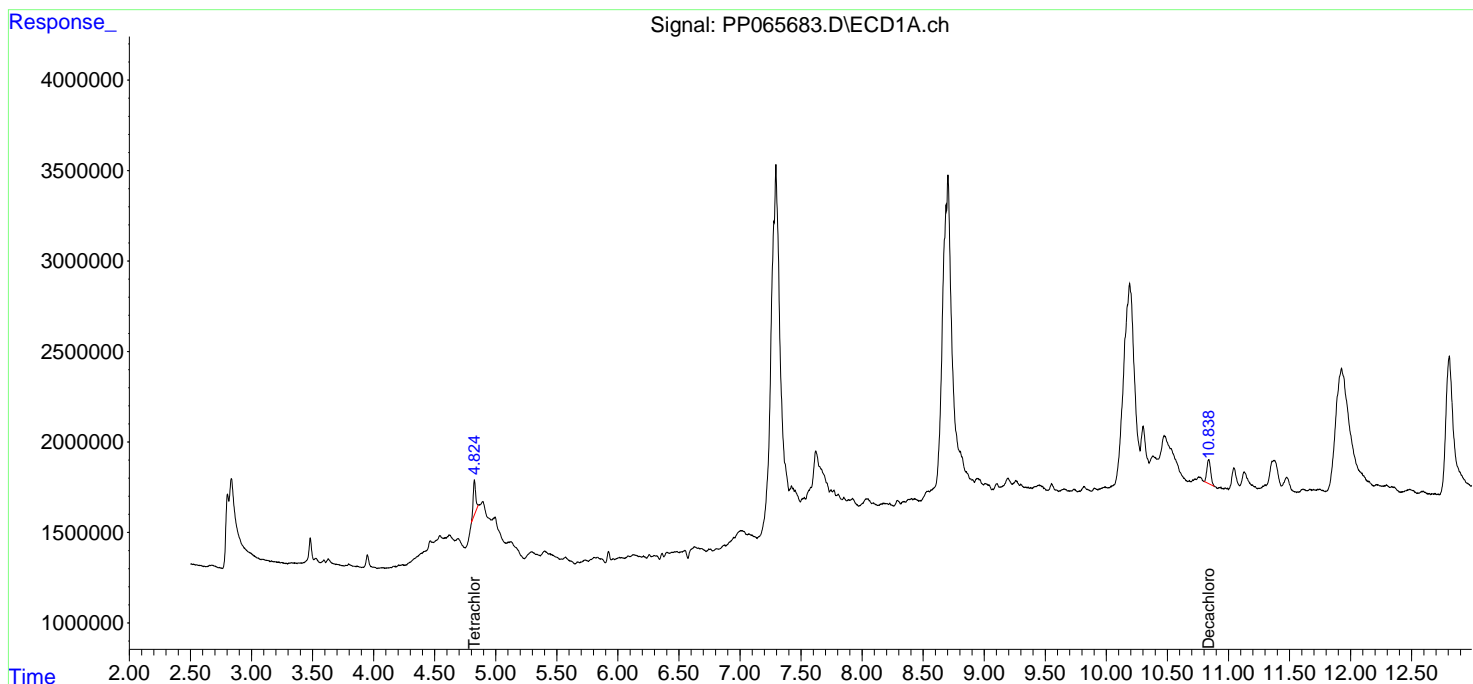
Instrument :
 ECD_P
ClientSampleId :
 ARIEL-CABLE-1-4

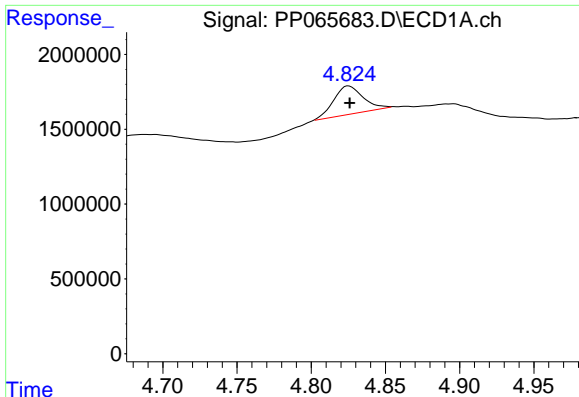
Manual Integrations
APPROVED

Reviewed By :Yogesh Patel 06/14/2024
 Supervised By :Ankita Jodhani 06/14/2024

Integration File signal 1: autoint1.e
 Integration File signal 2: autoint2.e
 Quant Time: Jun 14 00:55:53 2024
 Quant Method : Z:\pestpcbsrv\HPCHEM1\ECD_P\methods\PP060524.M
 Quant Title : GC EXTRACTABLES
 QLast Update : Thu Jun 06 05:25:59 2024
 Response via : Initial Calibration
 Integrator: ChemStation

Volume Inj. : 2 µl
 Signal #1 Phase : ZB-MR1 Signal #2 Phase: ZB-MR2
 Signal #1 Info : 30Mx0.32mmx 0.50µ Signal #2 Info : 30M x 0.32mm x 0.25µm





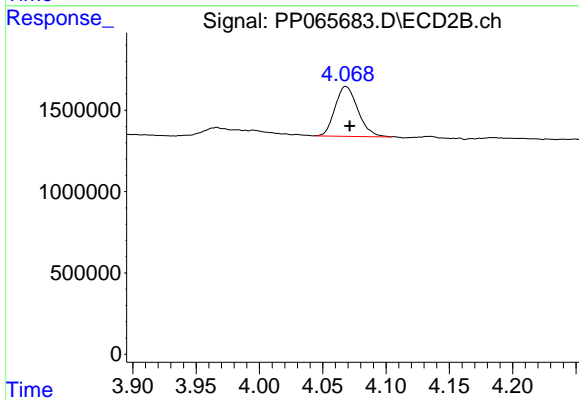
#1 Tetrachloro-m-xylene

R.T.: 4.824 min
 Delta R.T.: -0.002 min
 Response: 2642232
 Conc: 1.39 ng/ml

Instrument :
 ECD_P
 ClientSampleId :
 ARIEL-CABLE-1-4

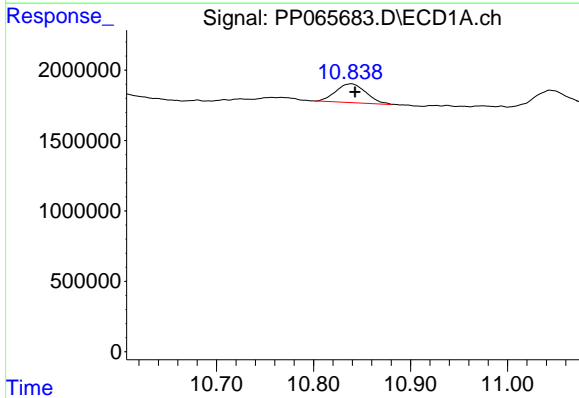
Manual Integrations
 APPROVED

Reviewed By :Yogesh Patel 06/14/2024
 Supervised By :Ankita Jodhani 06/14/2024



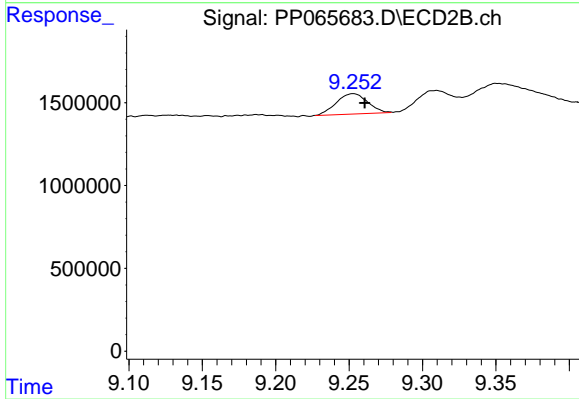
#1 Tetrachloro-m-xylene

R.T.: 4.068 min
 Delta R.T.: -0.004 min
 Response: 3859351
 Conc: 1.38 ng/ml m



#2 Decachlorobiphenyl

R.T.: 10.838 min
 Delta R.T.: -0.005 min
 Response: 2885500
 Conc: 1.47 ng/ml m



#2 Decachlorobiphenyl

R.T.: 9.252 min
 Delta R.T.: -0.008 min
 Response: 1828531
 Conc: 1.24 ng/ml m