

Data Path : Z:\pestpcbsrv\HPCHEM1\ECD\_P\Data\PP061422\  
 Data File : PP048749.D  
 Signal(s) : Signal #1: ECD1A.ch Signal #2: ECD2B.ch  
 Acq On : 14 Jun 2022 10:36  
 Operator : YP\AJ  
 Sample : AR1254CCC500  
 Misc :  
 ALS Vial : 6 Sample Multiplier: 1

Instrument :  
 ECD\_P  
 ClientSampleId :  
 AR1254CCC500

Integration File signal 1: autoint1.e  
 Integration File signal 2: autoint2.e  
 Quant Time: Jun 14 15:11:17 2022  
 Quant Method : Z:\pestpcbsrv\HPCHEM1\ECD\_P\methods\PP060722.M  
 Quant Title : GC EXTRACTABLES  
 QLast Update : Tue Jun 07 11:09:40 2022  
 Response via : Initial Calibration  
 Integrator: ChemStation

Volume Inj. : 2 µl  
 Signal #1 Phase : ZB-MR1 Signal #2 Phase: ZB-MR2  
 Signal #1 Info : 30Mx0.32mmx 0.50µ Signal #2 Info : 30M x 0.32mm x 0.25µm

Compound	RT#1	RT#2	Resp#1	Resp#2	ng/ml	ng/ml
-----						
System Monitoring Compounds						
1) SA Tetrachlo...	4.038	3.201	120.4E6	109.7E6	50.242	57.624
2) SA Decachlor...	10.389	8.612	97975860	63315552	51.404	51.704
Target Compounds						
26) L6 AR-1254-1	6.266	5.218	43604572	50365220	468.869	498.223
27) L6 AR-1254-2	6.509	5.379	65978102	44068778	475.653	500.485
28) L6 AR-1254-3	6.917	5.814	68695350	68201618	483.150	490.629
29) L6 AR-1254-4	7.236	6.063	50631993	42255536	475.131	487.284
30) L6 AR-1254-5	7.701	6.518	55725471	60557336	469.419	493.760
-----						

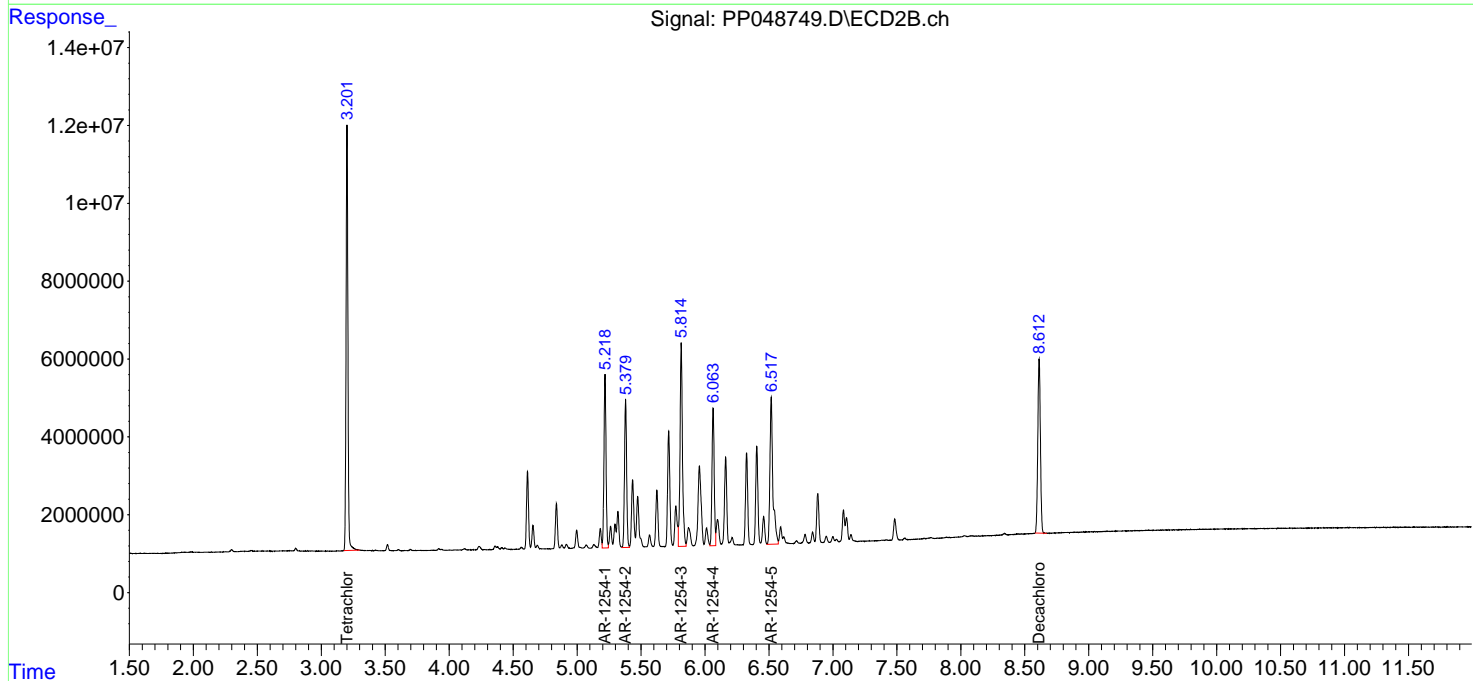
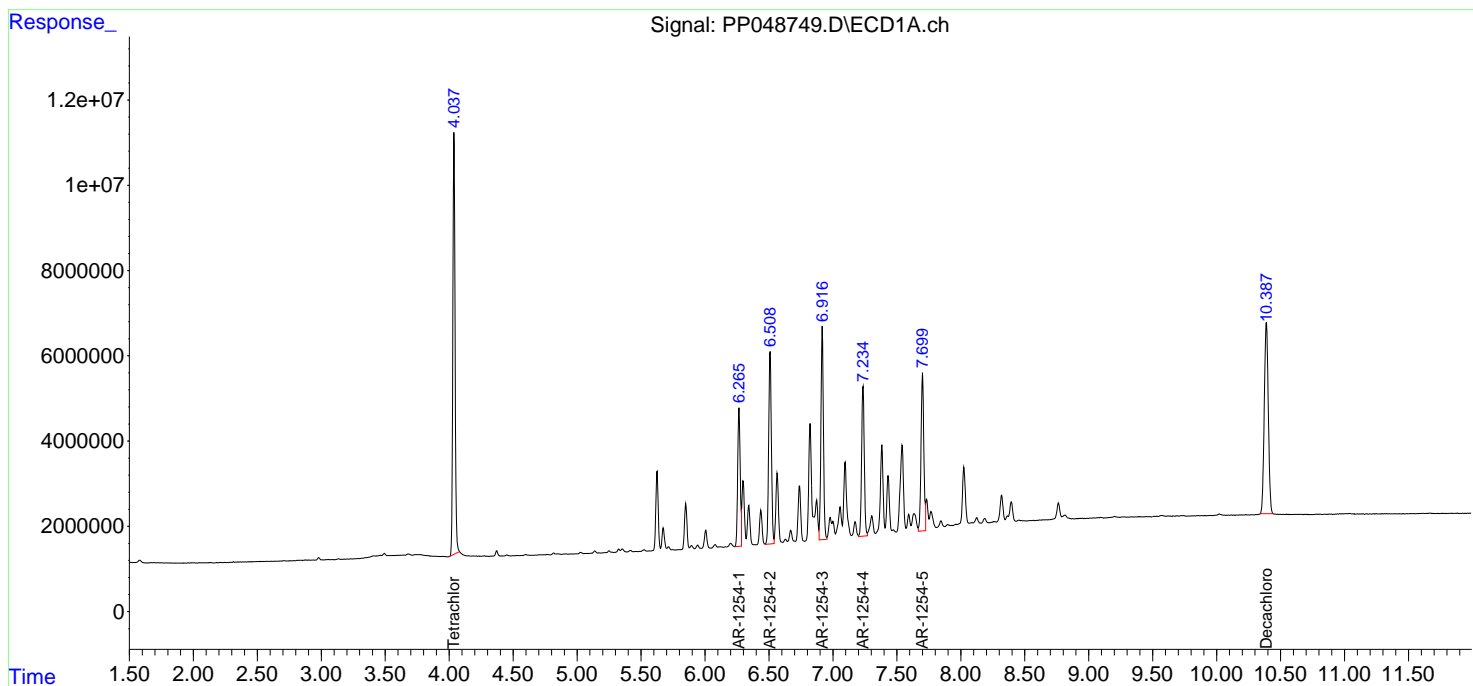
(f)=RT Delta > 1/2 Window (#)=Amounts differ by > 25% (m)=manual int.

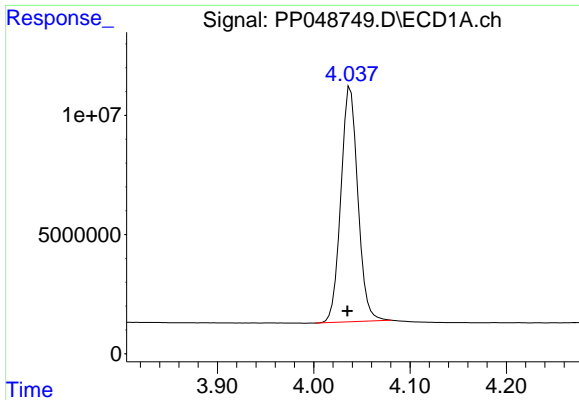
Data Path : Z:\pestpcbsrv\HPCHEM1\ECD\_P\Data\PP061422\  
 Data File : PP048749.D  
 Signal(s) : Signal #1: ECD1A.ch Signal #2: ECD2B.ch  
 Acq On : 14 Jun 2022 10:36  
 Operator : YP\AJ  
 Sample : AR1254CCC500  
 Misc :  
 ALS Vial : 6 Sample Multiplier: 1

Instrument :  
 ECD\_P  
 ClientSampleId :  
 AR1254CCC500

Integration File signal 1: autoint1.e  
 Integration File signal 2: autoint2.e  
 Quant Time: Jun 14 15:11:17 2022  
 Quant Method : Z:\pestpcbsrv\HPCHEM1\ECD\_P\methods\PP060722.M  
 Quant Title : GC EXTRACTABLES  
 QLast Update : Tue Jun 07 11:09:40 2022  
 Response via : Initial Calibration  
 Integrator: ChemStation

Volume Inj. : 2 µl  
 Signal #1 Phase : ZB-MR1 Signal #2 Phase: ZB-MR2  
 Signal #1 Info : 30Mx0.32mmx 0.50µ Signal #2 Info : 30M x 0.32mm x 0.25µm

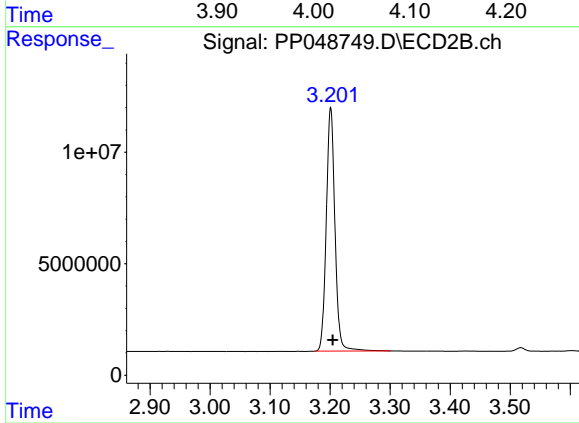




#1 Tetrachloro-m-xylene

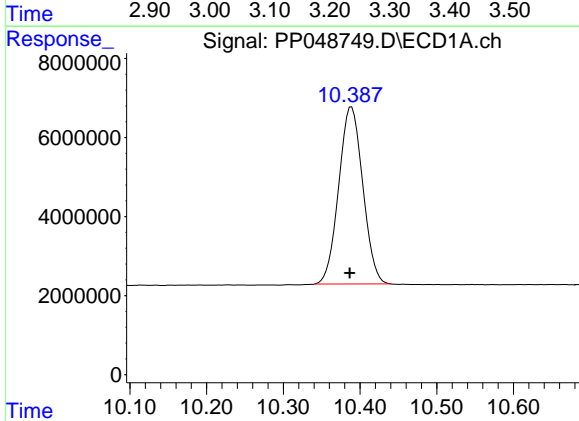
R.T.: 4.038 min  
 Delta R.T.: 0.003 min  
 Response: 120389460  
 Conc: 50.24 ng/ml

Instrument :  
 ECD\_P  
 ClientSampleId :  
 AR1254CCC500



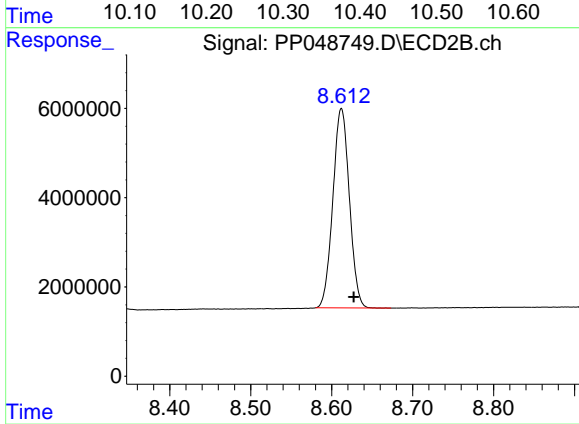
#1 Tetrachloro-m-xylene

R.T.: 3.201 min  
 Delta R.T.: -0.004 min  
 Response: 109678976  
 Conc: 57.62 ng/ml



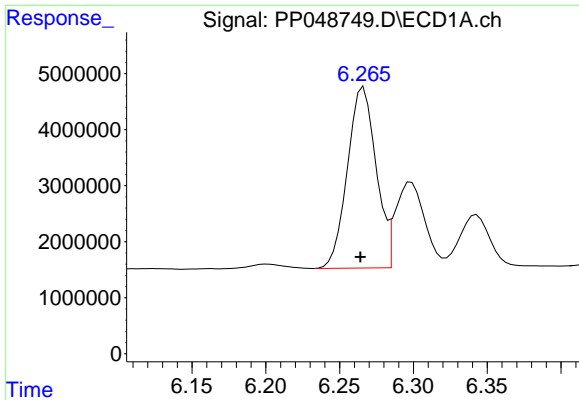
#2 Decachlorobiphenyl

R.T.: 10.389 min  
 Delta R.T.: 0.002 min  
 Response: 97975860  
 Conc: 51.40 ng/ml



#2 Decachlorobiphenyl

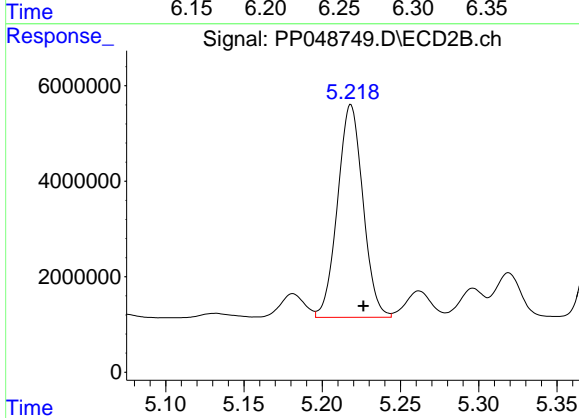
R.T.: 8.612 min  
 Delta R.T.: -0.015 min  
 Response: 63315552  
 Conc: 51.70 ng/ml



#26 AR-1254-1

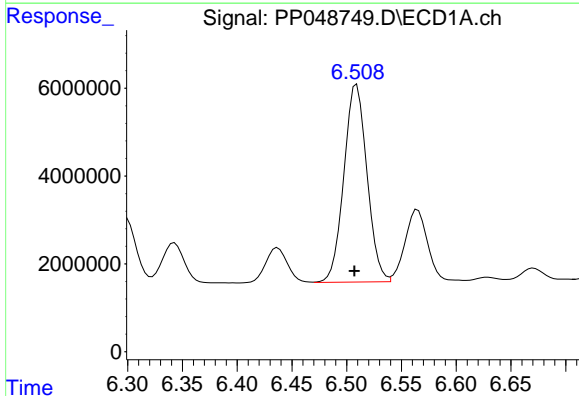
R.T.: 6.266 min  
 Delta R.T.: 0.002 min  
 Response: 43604572  
 Conc: 468.87 ng/ml

Instrument :  
 ECD\_P  
 ClientSampleId :  
 AR1254CCC500



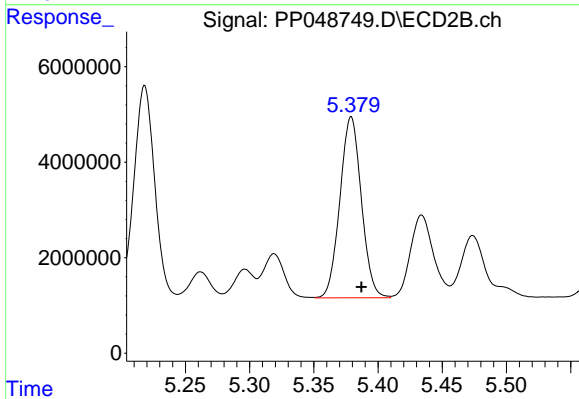
#26 AR-1254-1

R.T.: 5.218 min  
 Delta R.T.: -0.008 min  
 Response: 50365220  
 Conc: 498.22 ng/ml



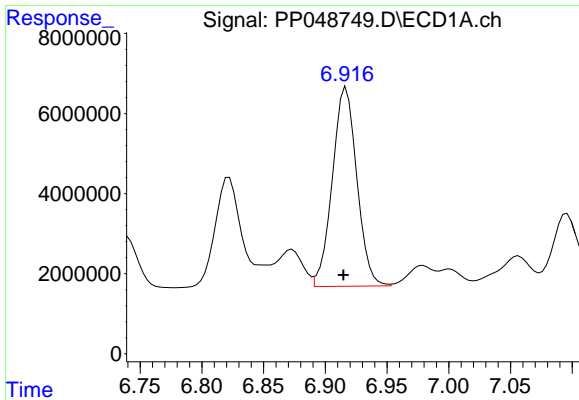
#27 AR-1254-2

R.T.: 6.509 min  
 Delta R.T.: 0.002 min  
 Response: 65978102  
 Conc: 475.65 ng/ml



#27 AR-1254-2

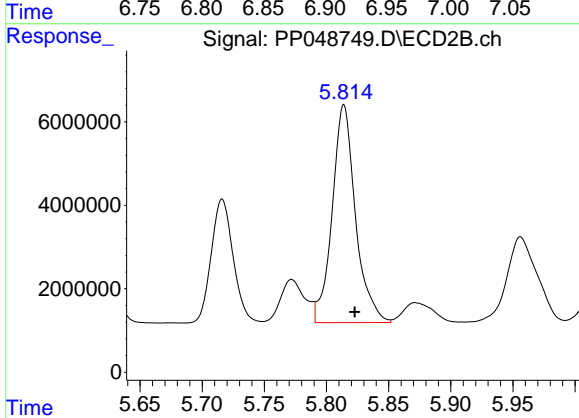
R.T.: 5.379 min  
 Delta R.T.: -0.008 min  
 Response: 44068778  
 Conc: 500.49 ng/ml



#28 AR-1254-3

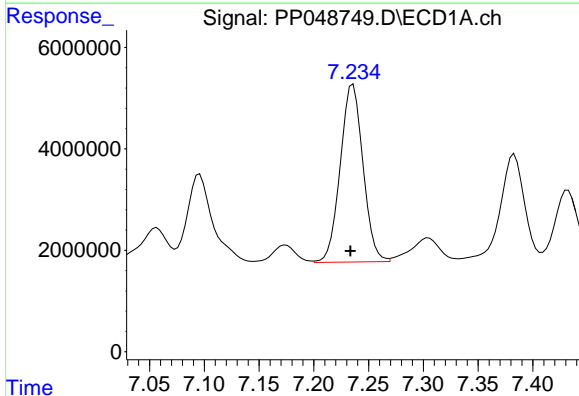
R.T.: 6.917 min  
 Delta R.T.: 0.002 min  
 Response: 68695350  
 Conc: 483.15 ng/ml

Instrument :  
 ECD\_P  
 ClientSampleId :  
 AR1254CCC500



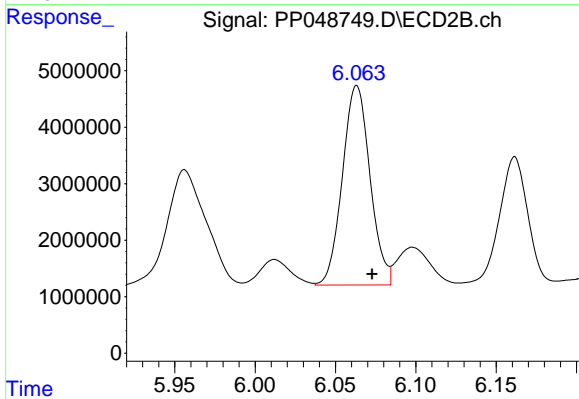
#28 AR-1254-3

R.T.: 5.814 min  
 Delta R.T.: -0.009 min  
 Response: 68201618  
 Conc: 490.63 ng/ml



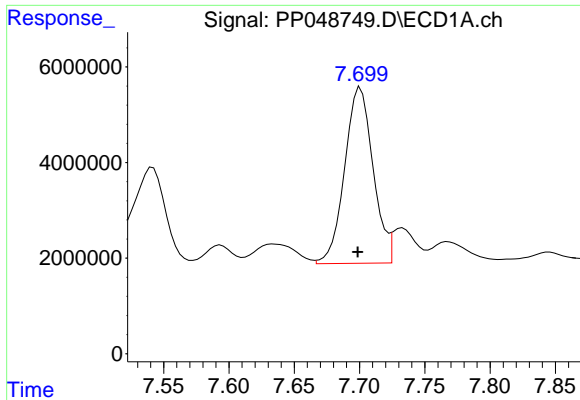
#29 AR-1254-4

R.T.: 7.236 min  
 Delta R.T.: 0.002 min  
 Response: 50631993  
 Conc: 475.13 ng/ml



#29 AR-1254-4

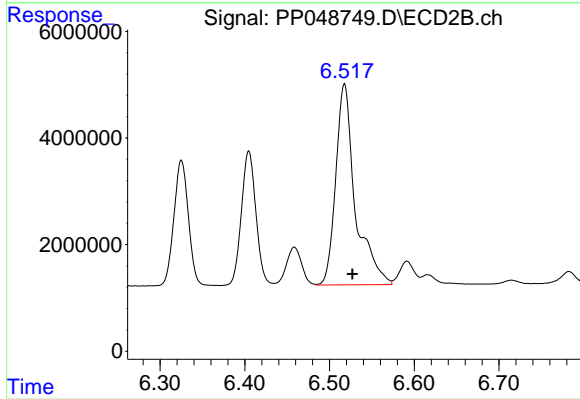
R.T.: 6.063 min  
 Delta R.T.: -0.009 min  
 Response: 42255536  
 Conc: 487.28 ng/ml



#30 AR-1254-5

R.T.: 7.701 min  
Delta R.T.: 0.002 min  
Response: 55725471  
Conc: 469.42 ng/ml

Instrument :  
ECD\_P  
ClientSampleId :  
AR1254CCC500



#30 AR-1254-5

R.T.: 6.518 min  
Delta R.T.: -0.009 min  
Response: 60557336  
Conc: 493.76 ng/ml