

Data Path : Z:\pestpcbsrv\HPCHEM1\ECD_P\Data\PP061422\
 Data File : PP048779.D
 Signal(s) : Signal #1: ECD1A.ch Signal #2: ECD2B.ch
 Acq On : 14 Jun 2022 19:39
 Operator : YP\AJ
 Sample : AR1254CCC500
 Misc :
 ALS Vial : 6 Sample Multiplier: 1

Instrument :
 ECD_P
ClientSampleId :
 AR1254CCC500

Integration File signal 1: autoint1.e
 Integration File signal 2: autoint2.e
 Quant Time: Jun 15 05:15:25 2022
 Quant Method : Z:\pestpcbsrv\HPCHEM1\ECD_P\methods\PP060722.M
 Quant Title : GC EXTRACTABLES
 QLast Update : Tue Jun 07 11:09:40 2022
 Response via : Initial Calibration
 Integrator: ChemStation

Volume Inj. : 2 µl
 Signal #1 Phase : ZB-MR1 Signal #2 Phase: ZB-MR2
 Signal #1 Info : 30Mx0.32mmx 0.50µ Signal #2 Info : 30M x 0.32mm x 0.25µm

Compound	RT#1	RT#2	Resp#1	Resp#2	ng/ml	ng/ml

System Monitoring Compounds						
1) SA Tetrachlo...	4.037	3.201	117.3E6	108.8E6	48.967	57.138
2) SA Decachlor...	10.388	8.610	97044163	63554876	50.915	51.900
Target Compounds						
26) L6 AR-1254-1	6.264	5.216	44251812	51003932	475.829	504.542
27) L6 AR-1254-2	6.507	5.377	66635453	44789656	480.392	508.672
28) L6 AR-1254-3	6.915	5.812	67927024	69545284	477.746	500.295
29) L6 AR-1254-4	7.235	6.061	50506315	43139162	473.952	497.473
30) L6 AR-1254-5	7.700	6.515	56650612	60989255	477.212	497.281

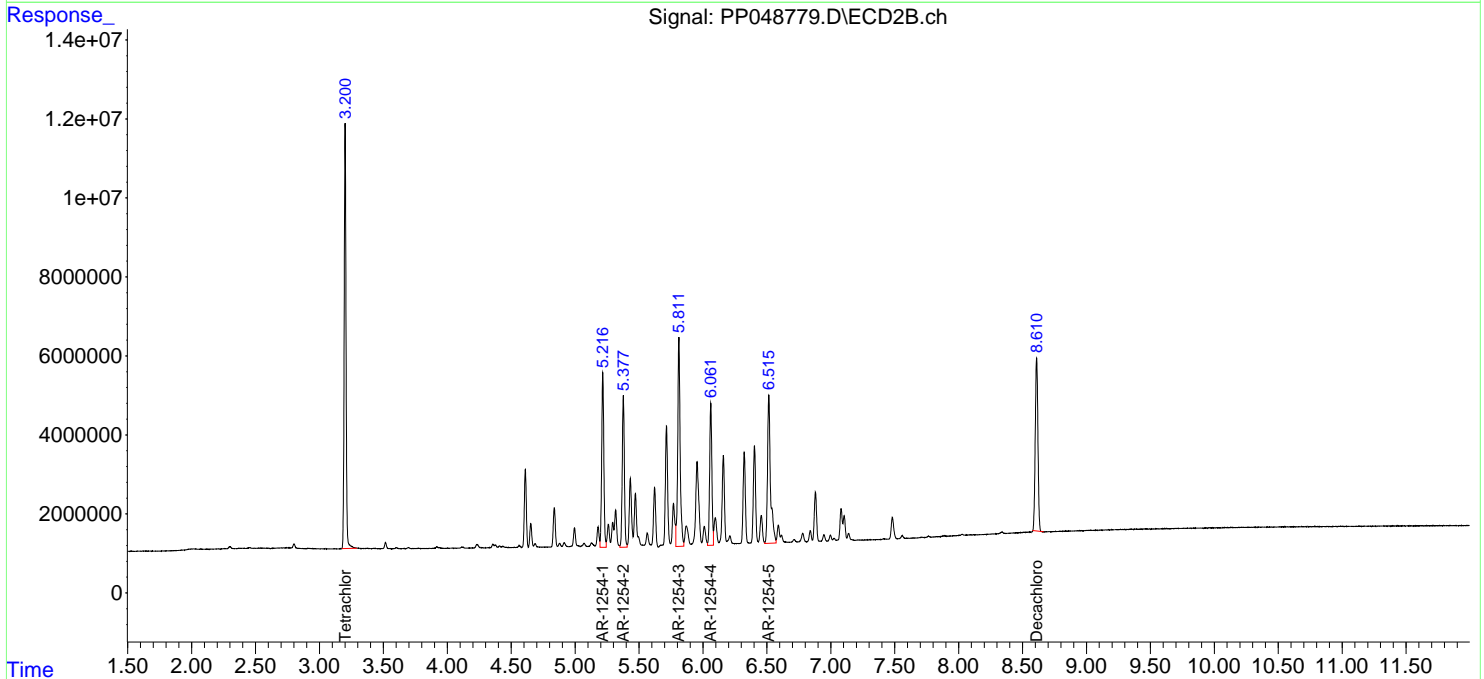
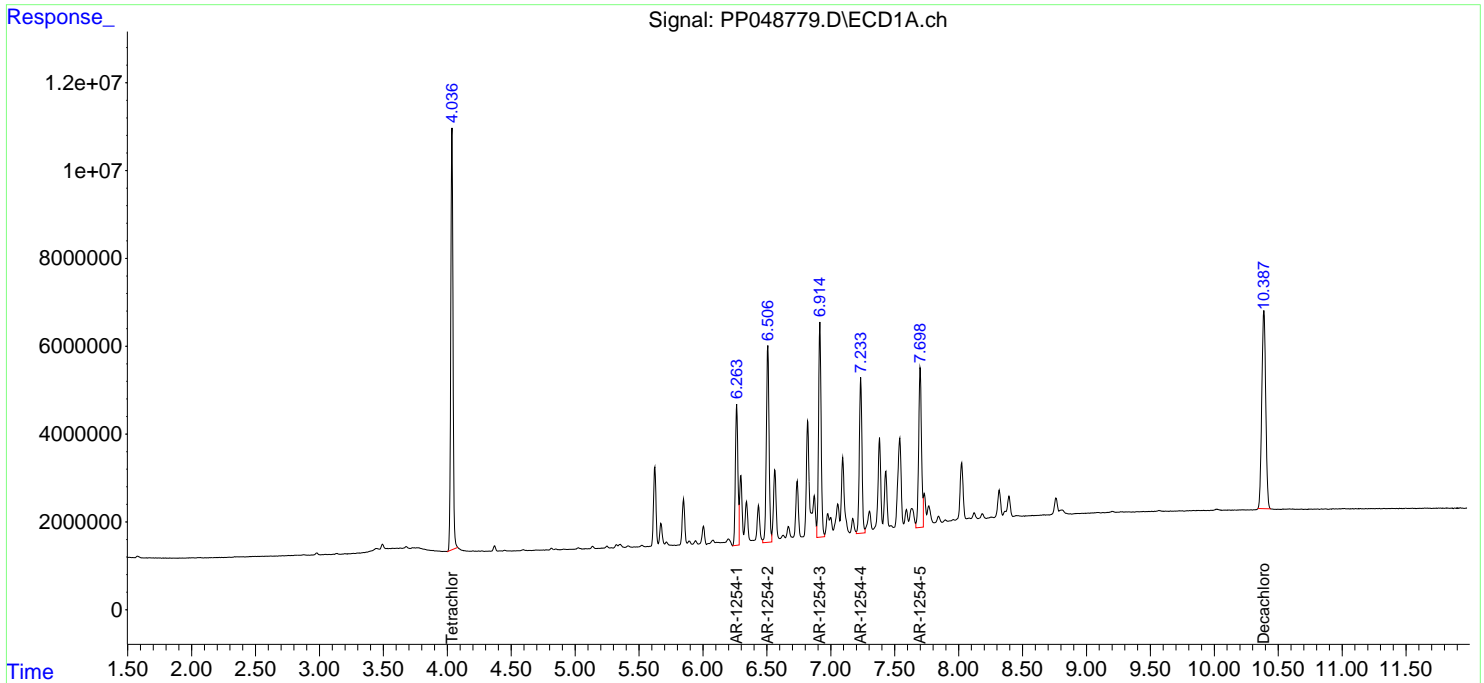
(f)=RT Delta > 1/2 Window (#)=Amounts differ by > 25% (m)=manual int.

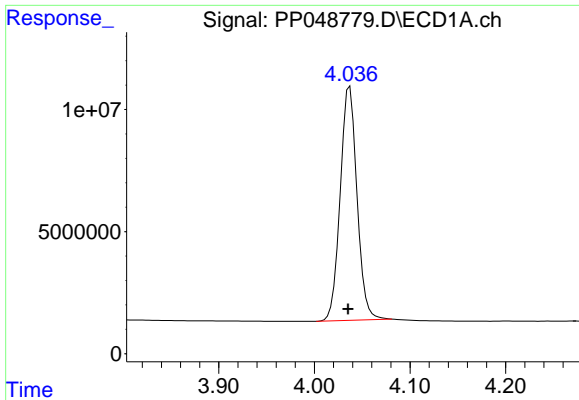
Data Path : Z:\pestpcbsrv\HPCHEM1\ECD_P\Data\PP061422\
 Data File : PP048779.D
 Signal(s) : Signal #1: ECD1A.ch Signal #2: ECD2B.ch
 Acq On : 14 Jun 2022 19:39
 Operator : YP\AJ
 Sample : AR1254CCC500
 Misc :
 ALS Vial : 6 Sample Multiplier: 1

Instrument :
 ECD_P
 ClientSampleId :
 AR1254CCC500

Integration File signal 1: autoint1.e
 Integration File signal 2: autoint2.e
 Quant Time: Jun 15 05:15:25 2022
 Quant Method : Z:\pestpcbsrv\HPCHEM1\ECD_P\methods\PP060722.M
 Quant Title : GC EXTRACTABLES
 QLast Update : Tue Jun 07 11:09:40 2022
 Response via : Initial Calibration
 Integrator: ChemStation

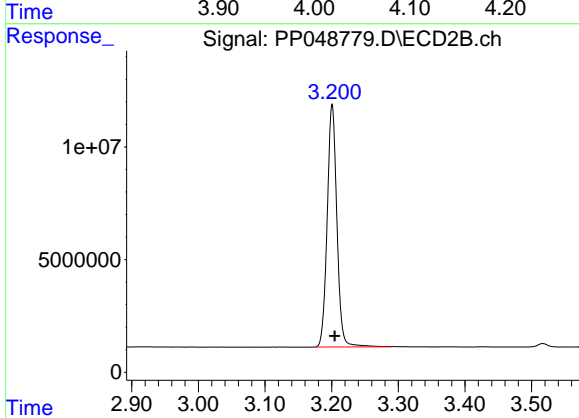
Volume Inj. : 2 µl
 Signal #1 Phase : ZB-MR1 Signal #2 Phase: ZB-MR2
 Signal #1 Info : 30Mx0.32mmx 0.50µ Signal #2 Info : 30M x 0.32mm x 0.25µm



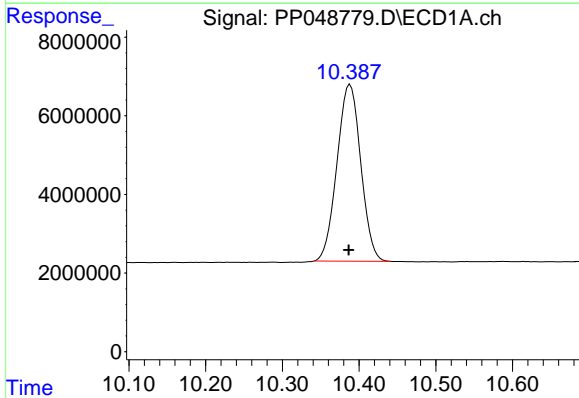


#1 Tetrachloro-m-xylene
 R.T.: 4.037 min
 Delta R.T.: 0.002 min
 Response: 117334704
 Conc: 48.97 ng/ml

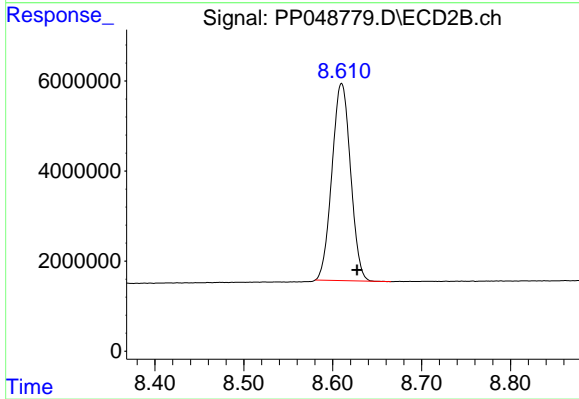
Instrument :
 ECD_P
 ClientSampleId :
 AR1254CCC500



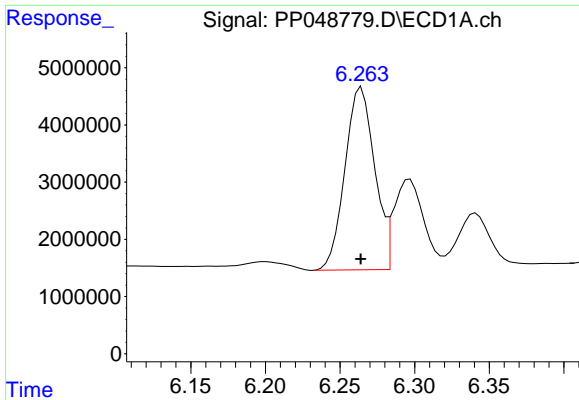
#1 Tetrachloro-m-xylene
 R.T.: 3.201 min
 Delta R.T.: -0.004 min
 Response: 108753382
 Conc: 57.14 ng/ml



#2 Decachlorobiphenyl
 R.T.: 10.388 min
 Delta R.T.: 0.002 min
 Response: 97044163
 Conc: 50.91 ng/ml



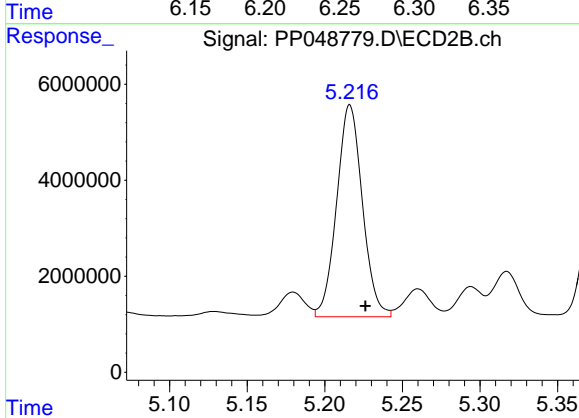
#2 Decachlorobiphenyl
 R.T.: 8.610 min
 Delta R.T.: -0.017 min
 Response: 63554876
 Conc: 51.90 ng/ml



#26 AR-1254-1

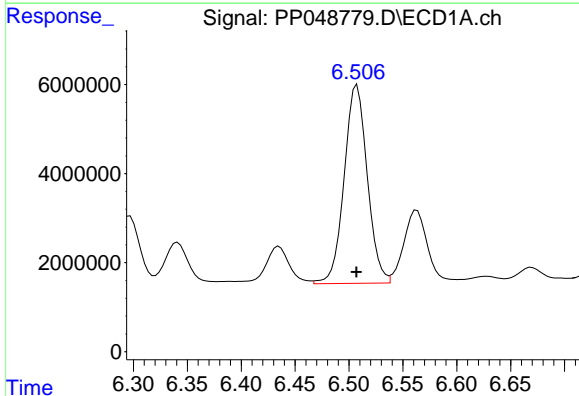
R.T.: 6.264 min
 Delta R.T.: 0.000 min
 Response: 44251812
 Conc: 475.83 ng/ml

Instrument :
 ECD_P
 ClientSampleId :
 AR1254CCC500



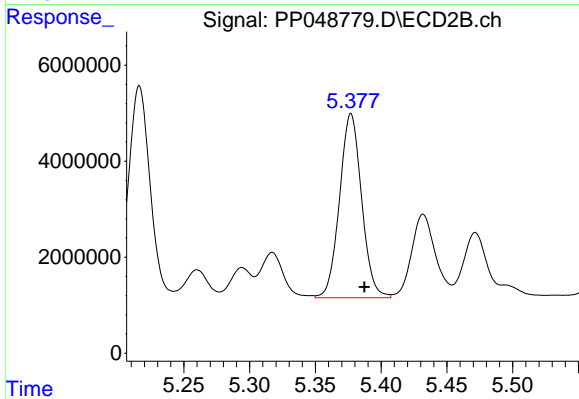
#26 AR-1254-1

R.T.: 5.216 min
 Delta R.T.: -0.010 min
 Response: 51003932
 Conc: 504.54 ng/ml



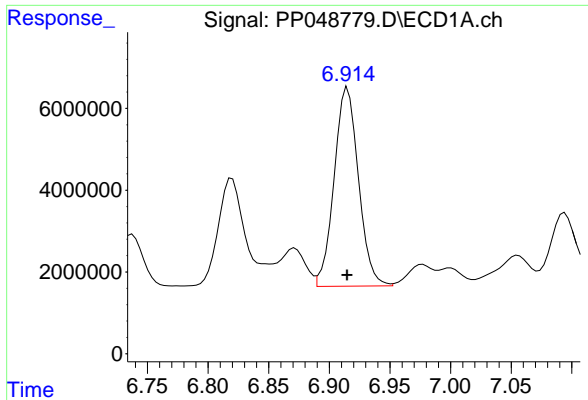
#27 AR-1254-2

R.T.: 6.507 min
 Delta R.T.: 0.000 min
 Response: 66635453
 Conc: 480.39 ng/ml



#27 AR-1254-2

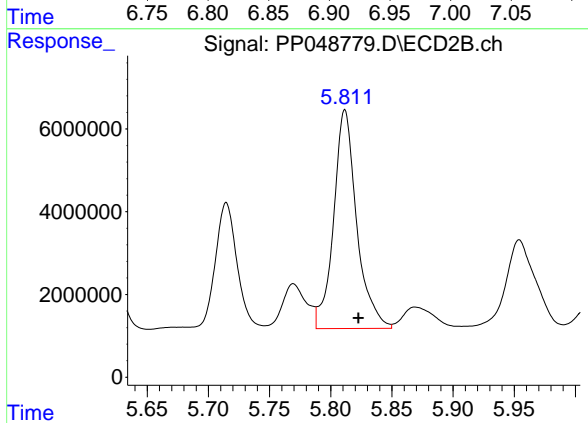
R.T.: 5.377 min
 Delta R.T.: -0.010 min
 Response: 44789656
 Conc: 508.67 ng/ml



#28 AR-1254-3

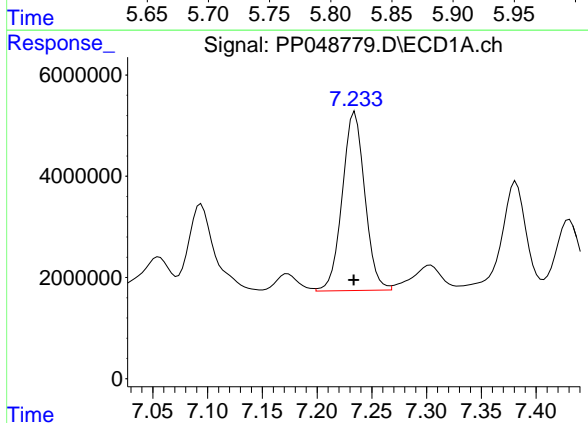
R.T.: 6.915 min
 Delta R.T.: 0.000 min
 Response: 67927024
 Conc: 477.75 ng/ml

Instrument :
 ECD_P
 ClientSampleId :
 AR1254CCC500



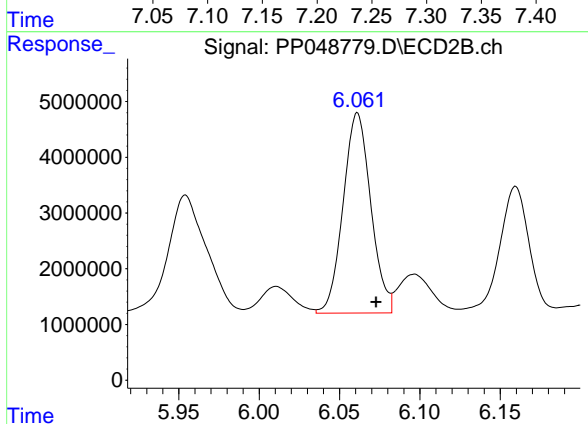
#28 AR-1254-3

R.T.: 5.812 min
 Delta R.T.: -0.011 min
 Response: 69545284
 Conc: 500.30 ng/ml



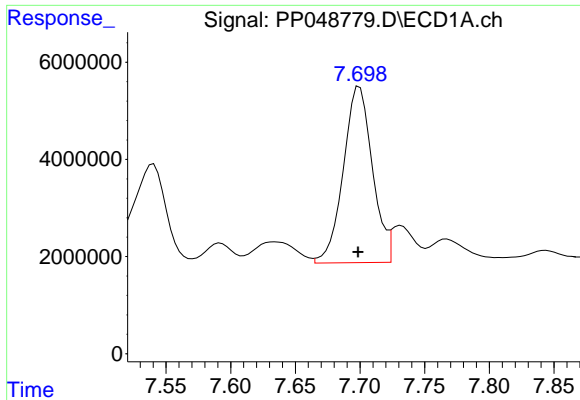
#29 AR-1254-4

R.T.: 7.235 min
 Delta R.T.: 0.001 min
 Response: 50506315
 Conc: 473.95 ng/ml



#29 AR-1254-4

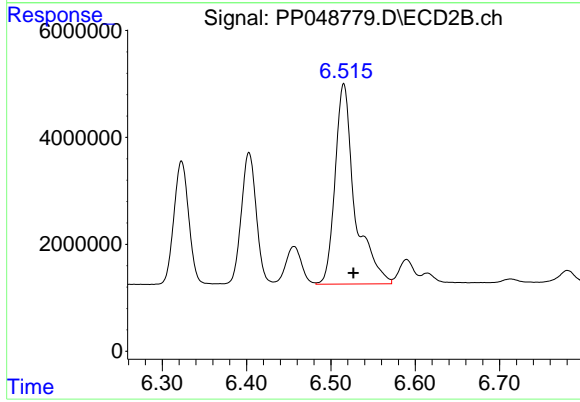
R.T.: 6.061 min
 Delta R.T.: -0.012 min
 Response: 43139162
 Conc: 497.47 ng/ml



#30 AR-1254-5

R.T.: 7.700 min
Delta R.T.: 0.001 min
Response: 56650612
Conc: 477.21 ng/ml

Instrument :
ECD_P
ClientSampleId :
AR1254CCC500



#30 AR-1254-5

R.T.: 6.515 min
Delta R.T.: -0.011 min
Response: 60989255
Conc: 497.28 ng/ml