

Data Path : Z:\pestpcbsrv\HPCHEM1\ECD\_P\Data\PP061422\  
 Data File : PP048790.D  
 Signal(s) : Signal #1: ECD1A.ch Signal #2: ECD2B.ch  
 Acq On : 15 Jun 2022 04:13  
 Operator : YP\AJ  
 Sample : AR1660CCC500  
 Misc :  
 ALS Vial : 3 Sample Multiplier: 1

**Instrument :**  
 ECD\_P  
**ClientSampleId :**  
 AR1660CCC500

Integration File signal 1: autoint1.e  
 Integration File signal 2: autoint2.e  
 Quant Time: Jun 15 05:21:06 2022  
 Quant Method : Z:\pestpcbsrv\HPCHEM1\ECD\_P\methods\PP060722.M  
 Quant Title : GC EXTRACTABLES  
 QLast Update : Tue Jun 07 11:09:40 2022  
 Response via : Initial Calibration  
 Integrator: ChemStation

Volume Inj. : 2 µl  
 Signal #1 Phase : ZB-MR1 Signal #2 Phase: ZB-MR2  
 Signal #1 Info : 30Mx0.32mmx 0.50µ Signal #2 Info : 30M x 0.32mm x 0.25µm

Compound	RT#1	RT#2	Resp#1	Resp#2	ng/ml	ng/ml
-----						
System Monitoring Compounds						
1) SA Tetrachlo...	4.038	3.202	115.0E6	111.4E6	47.979	58.518
2) SA Decachlor...	10.386	8.611	92956920	59695137	48.770	48.748
Target Compounds						
3) L1 AR-1016-1	5.325	4.358	37690787	37300017	438.081	538.403
4) L1 AR-1016-2	5.349	4.378	54731851	51791117	449.543	546.043
5) L1 AR-1016-3	5.416	4.563	33926902	28743945	447.616	552.643
6) L1 AR-1016-4	5.525	4.612	28312879	22403831	450.090	556.589
7) L1 AR-1016-5	5.849	4.838	27575575	25739008	446.674	504.702
31) L7 AR-1260-1	7.094	5.955	46888471	45863461	450.003	543.527
32) L7 AR-1260-2	7.382	6.160	55177445	56056449	453.142	547.270
33) L7 AR-1260-3	7.779	6.325	39542318	50051037	467.073	516.459
34) L7 AR-1260-4	8.032	6.840	48383336	36709218	467.643	518.656
35) L7 AR-1260-5	8.394	7.106	93185731	81208913	476.026	505.685

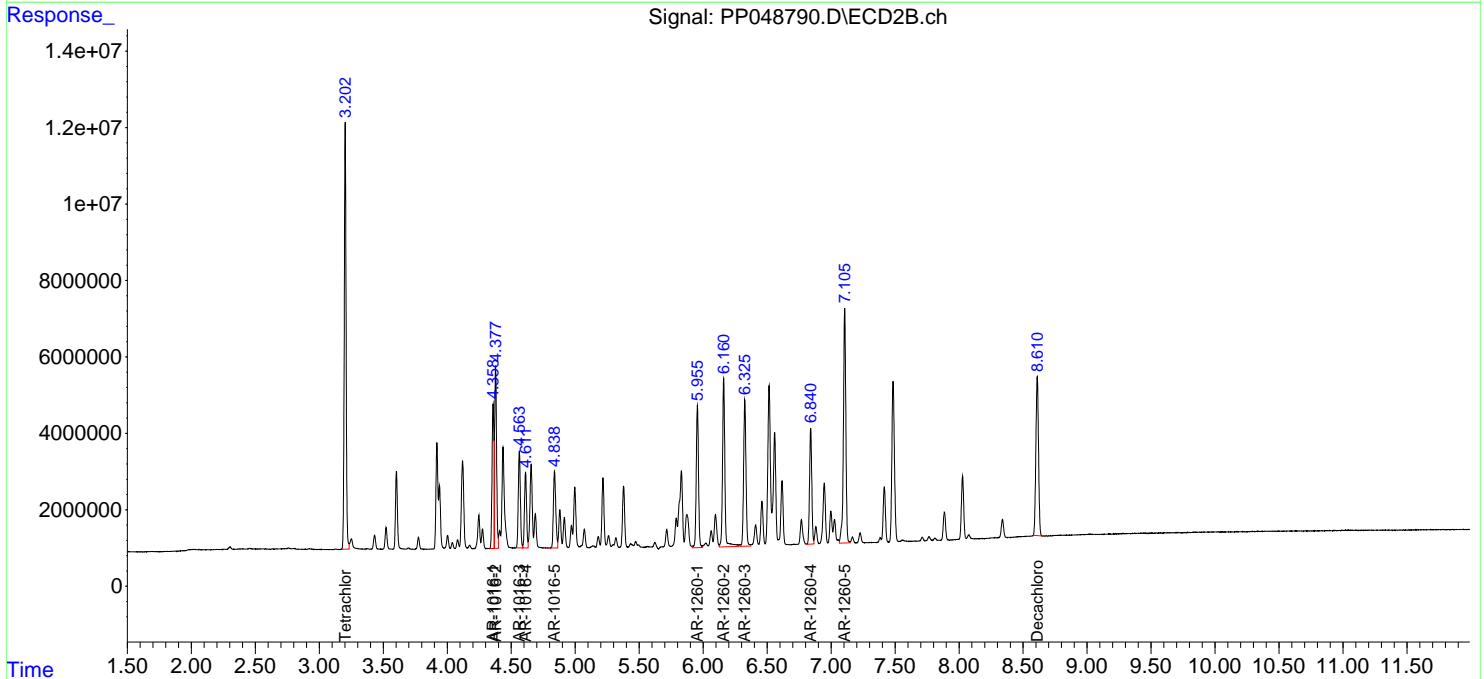
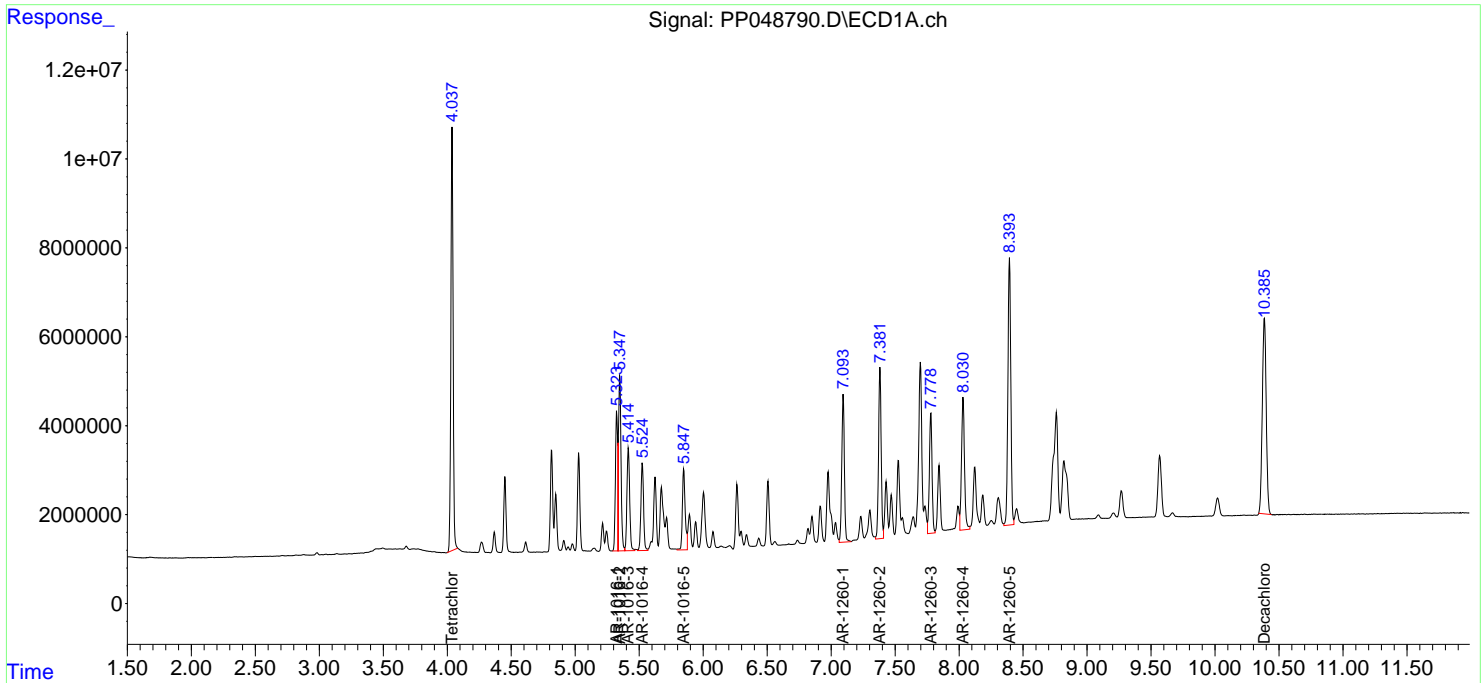
(f)=RT Delta > 1/2 Window (#)=Amounts differ by > 25% (m)=manual int.

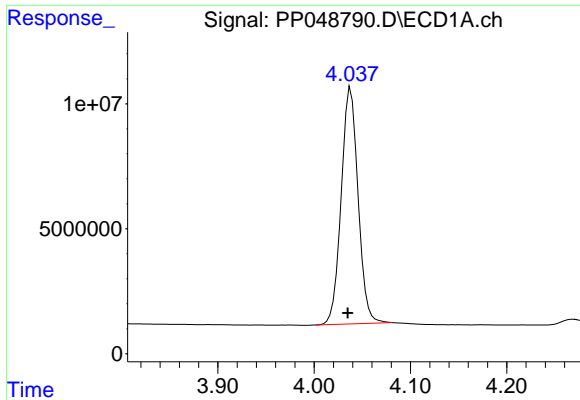
Data Path : Z:\pestpcbsrv\HPCHEM1\ECD\_P\Data\PP061422\  
 Data File : PP048790.D  
 Signal(s) : Signal #1: ECD1A.ch Signal #2: ECD2B.ch  
 Acq On : 15 Jun 2022 04:13  
 Operator : YP\AJ  
 Sample : AR1660CCC500  
 Misc :  
 ALS Vial : 3 Sample Multiplier: 1

**Instrument :**  
 ECD\_P  
**ClientSampleId :**  
 AR1660CCC500

Integration File signal 1: autoint1.e  
 Integration File signal 2: autoint2.e  
 Quant Time: Jun 15 05:21:06 2022  
 Quant Method : Z:\pestpcbsrv\HPCHEM1\ECD\_P\methods\PP060722.M  
 Quant Title : GC EXTRACTABLES  
 QLast Update : Tue Jun 07 11:09:40 2022  
 Response via : Initial Calibration  
 Integrator: ChemStation

Volume Inj. : 2 µl  
 Signal #1 Phase : ZB-MR1 Signal #2 Phase: ZB-MR2  
 Signal #1 Info : 30Mx0.32mmx 0.50µ Signal #2 Info : 30M x 0.32mm x 0.25µm

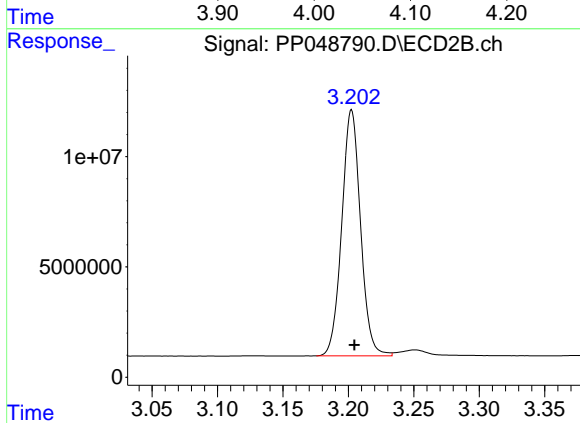




#1 Tetrachloro-m-xylene

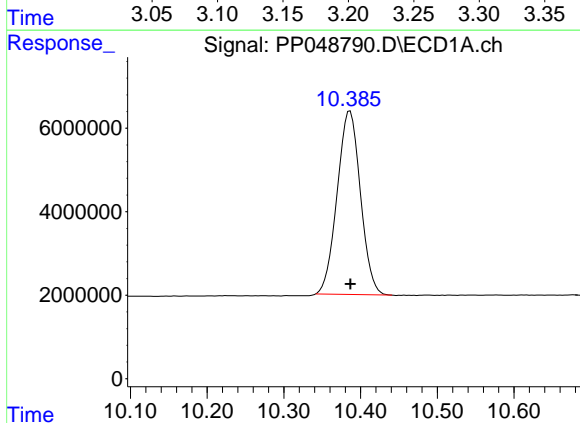
R.T.: 4.038 min  
 Delta R.T.: 0.003 min  
 Response: 114967795  
 Conc: 47.98 ng/ml

Instrument :  
 ECD\_P  
 ClientSampleId :  
 AR1660CCC500



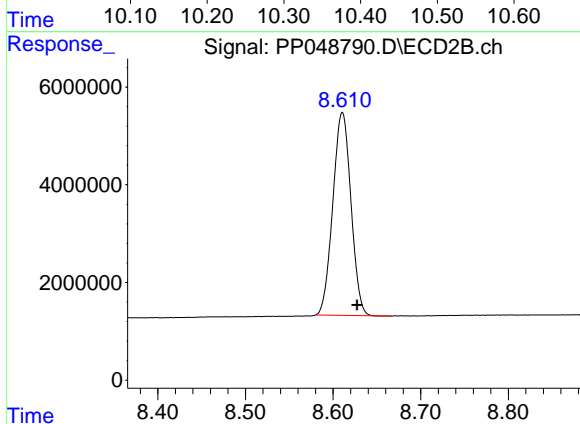
#1 Tetrachloro-m-xylene

R.T.: 3.202 min  
 Delta R.T.: -0.002 min  
 Response: 111380959  
 Conc: 58.52 ng/ml



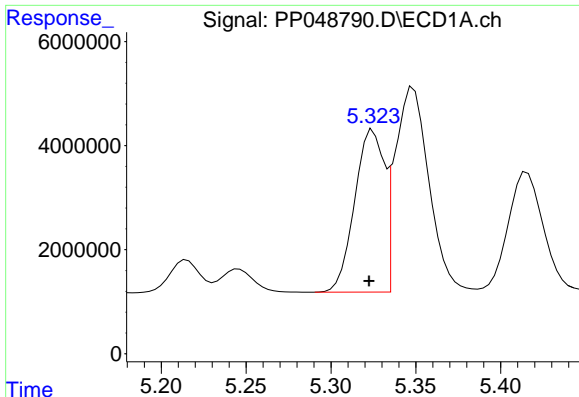
#2 Decachlorobiphenyl

R.T.: 10.386 min  
 Delta R.T.: 0.000 min  
 Response: 92956920  
 Conc: 48.77 ng/ml



#2 Decachlorobiphenyl

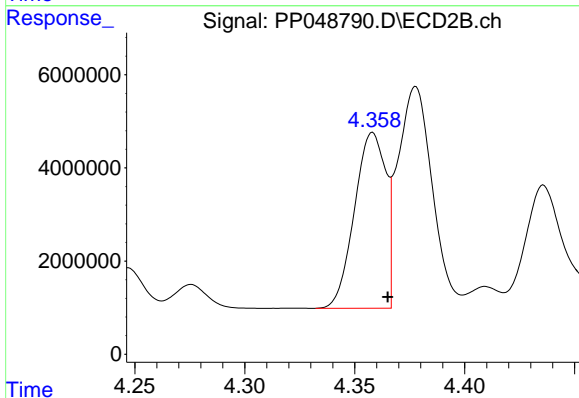
R.T.: 8.611 min  
 Delta R.T.: -0.017 min  
 Response: 59695137  
 Conc: 48.75 ng/ml



#3 AR-1016-1

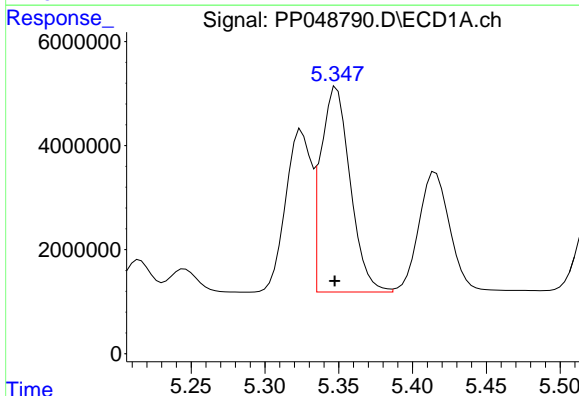
R.T.: 5.325 min  
 Delta R.T.: 0.002 min  
 Response: 37690787  
 Conc: 438.08 ng/ml

Instrument :  
 ECD\_P  
 ClientSampleId :  
 AR1660CCC500



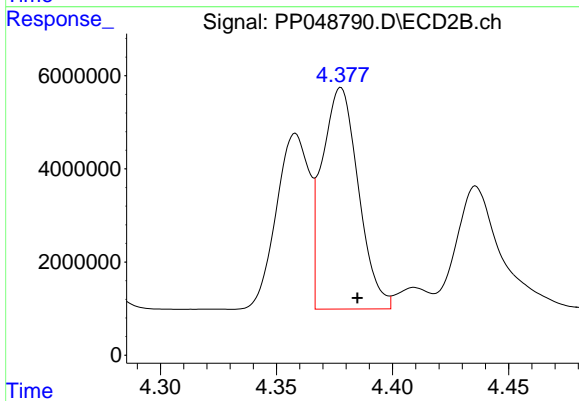
#3 AR-1016-1

R.T.: 4.358 min  
 Delta R.T.: -0.007 min  
 Response: 37300017  
 Conc: 538.40 ng/ml



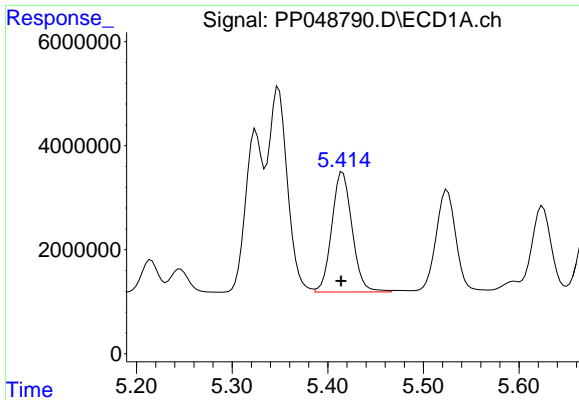
#4 AR-1016-2

R.T.: 5.349 min  
 Delta R.T.: 0.001 min  
 Response: 54731851  
 Conc: 449.54 ng/ml



#4 AR-1016-2

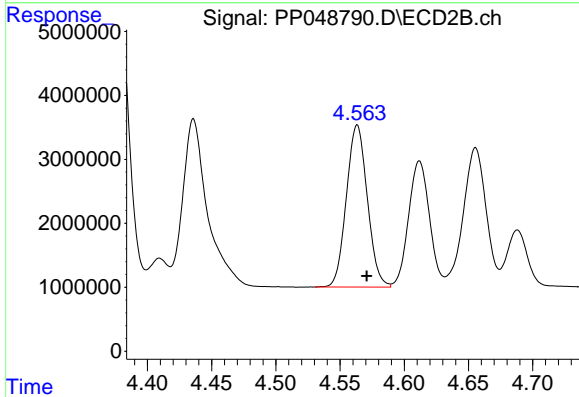
R.T.: 4.378 min  
 Delta R.T.: -0.007 min  
 Response: 51791117  
 Conc: 546.04 ng/ml



#5 AR-1016-3

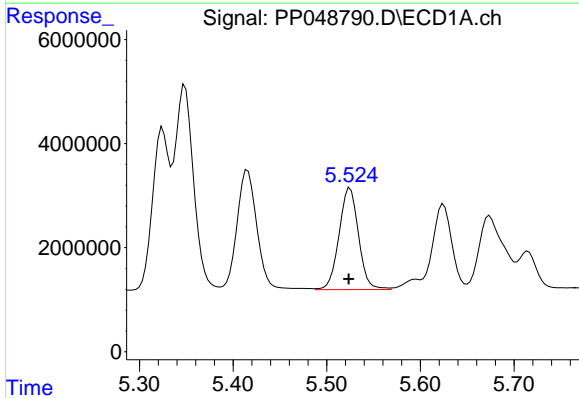
R.T.: 5.416 min  
 Delta R.T.: 0.002 min  
 Response: 33926902  
 Conc: 447.62 ng/ml

Instrument :  
 ECD\_P  
 ClientSampleId :  
 AR1660CCC500



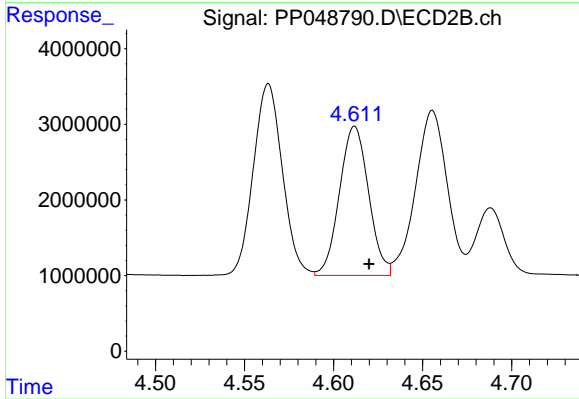
#5 AR-1016-3

R.T.: 4.563 min  
 Delta R.T.: -0.007 min  
 Response: 28743945  
 Conc: 552.64 ng/ml



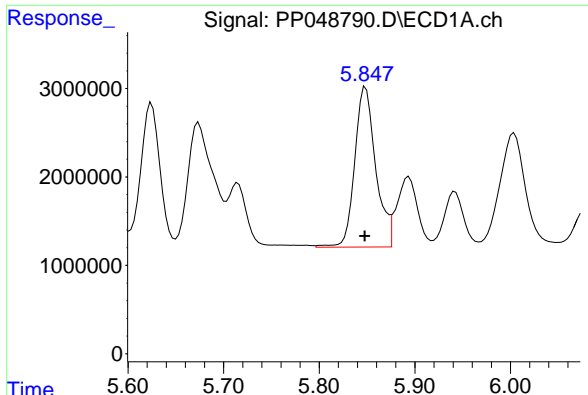
#6 AR-1016-4

R.T.: 5.525 min  
 Delta R.T.: 0.001 min  
 Response: 28312879  
 Conc: 450.09 ng/ml



#6 AR-1016-4

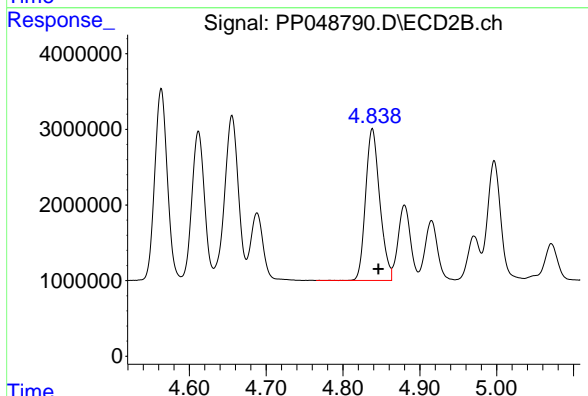
R.T.: 4.612 min  
 Delta R.T.: -0.008 min  
 Response: 22403831  
 Conc: 556.59 ng/ml



#7 AR-1016-5

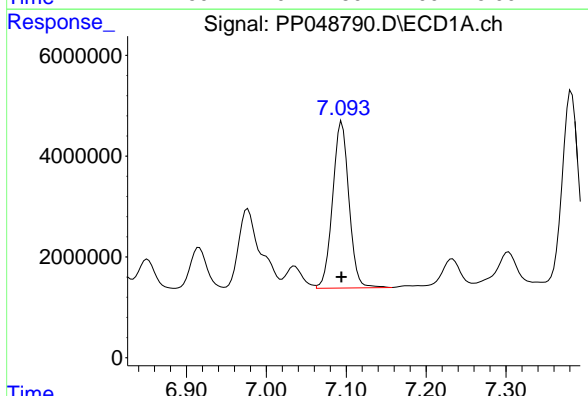
R.T.: 5.849 min  
 Delta R.T.: 0.000 min  
 Response: 27575575  
 Conc: 446.67 ng/ml

Instrument :  
 ECD\_P  
 ClientSampleId :  
 AR1660CCC500



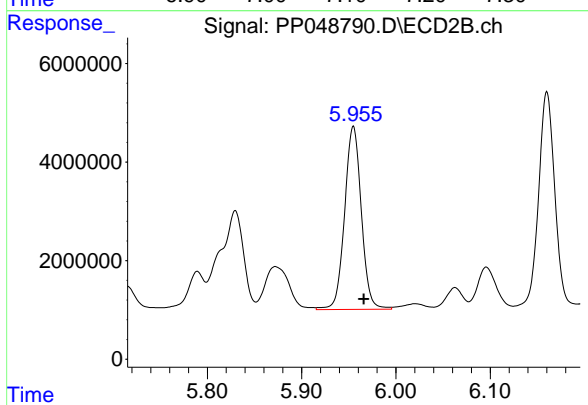
#7 AR-1016-5

R.T.: 4.838 min  
 Delta R.T.: -0.008 min  
 Response: 25739008  
 Conc: 504.70 ng/ml



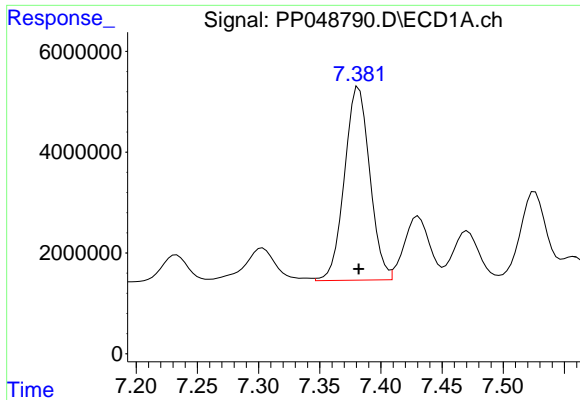
#31 AR-1260-1

R.T.: 7.094 min  
 Delta R.T.: 0.000 min  
 Response: 46888471  
 Conc: 450.00 ng/ml



#31 AR-1260-1

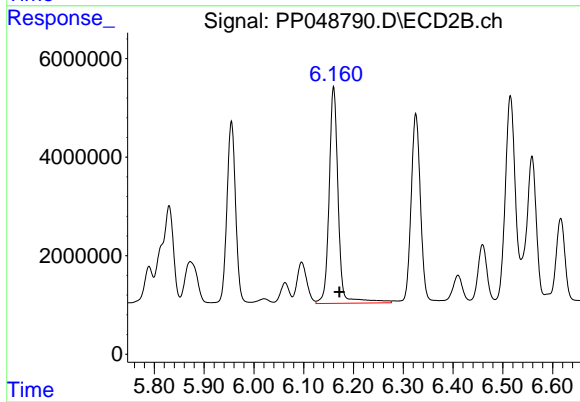
R.T.: 5.955 min  
 Delta R.T.: -0.011 min  
 Response: 45863461  
 Conc: 543.53 ng/ml



#32 AR-1260-2

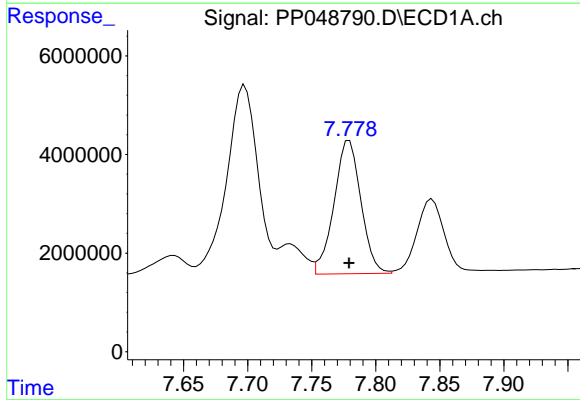
R.T.: 7.382 min  
Delta R.T.: 0.000 min  
Response: 55177445  
Conc: 453.14 ng/ml

Instrument :  
ECD\_P  
ClientSampleId :  
AR1660CCC500



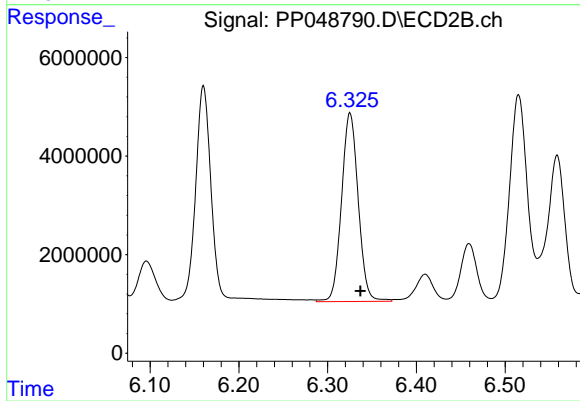
#32 AR-1260-2

R.T.: 6.160 min  
Delta R.T.: -0.012 min  
Response: 56056449  
Conc: 547.27 ng/ml



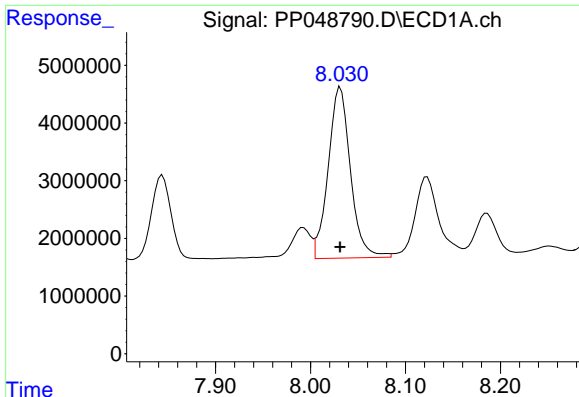
#33 AR-1260-3

R.T.: 7.779 min  
Delta R.T.: 0.000 min  
Response: 39542318  
Conc: 467.07 ng/ml



#33 AR-1260-3

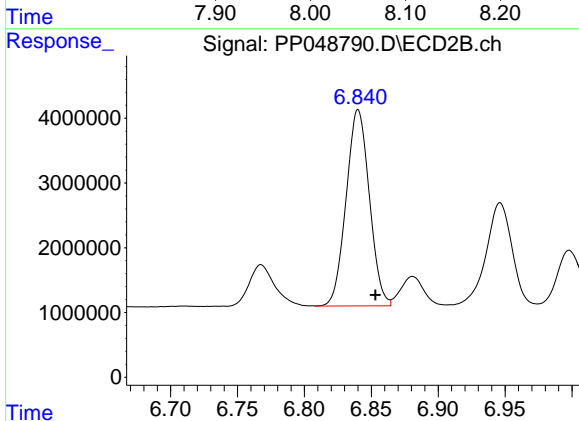
R.T.: 6.325 min  
Delta R.T.: -0.012 min  
Response: 50051037  
Conc: 516.46 ng/ml



#34 AR-1260-4

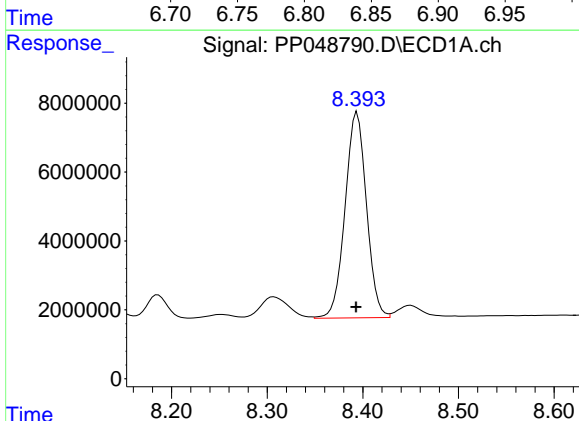
R.T.: 8.032 min  
 Delta R.T.: 0.000 min  
 Response: 48383336  
 Conc: 467.64 ng/ml

Instrument :  
 ECD\_P  
 ClientSampleId :  
 AR1660CCC500



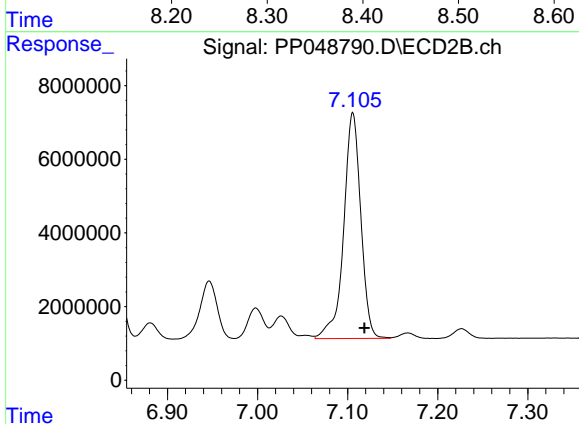
#34 AR-1260-4

R.T.: 6.840 min  
 Delta R.T.: -0.013 min  
 Response: 36709218  
 Conc: 518.66 ng/ml



#35 AR-1260-5

R.T.: 8.394 min  
 Delta R.T.: 0.001 min  
 Response: 93185731  
 Conc: 476.03 ng/ml



#35 AR-1260-5

R.T.: 7.106 min  
 Delta R.T.: -0.013 min  
 Response: 81208913  
 Conc: 505.69 ng/ml