

Data Path : Z:\pestpcbsrv\HPCHEM1\ECD_P\Data\PP061424\
 Data File : PP065693.D
 Signal(s) : Signal #1: ECD1A.ch Signal #2: ECD2B.ch
 Acq On : 14 Jun 2024 10:08
 Operator : YP\AJ
 Sample : AR1248CCC500
 Misc :
 ALS Vial : 5 Sample Multiplier: 1

Instrument :
 ECD_P
 ClientSampleId :
 AR1248CCC500

Integration File signal 1: autoint1.e
 Integration File signal 2: autoint2.e
 Quant Time: Jun 14 23:08:44 2024
 Quant Method : Z:\pestpcbsrv\HPCHEM1\ECD_P\methods\PP060524.M
 Quant Title : GC EXTRACTABLES
 QLast Update : Thu Jun 06 05:25:59 2024
 Response via : Initial Calibration
 Integrator: ChemStation

Volume Inj. : 2 µl
 Signal #1 Phase : ZB-MR2 Signal #2 Phase: ZB-MR2
 Signal #1 Info : 30Mx0.32mmx 0.50µ Signal #2 Info : 30M x 0.32mm x 0.25µm

Compound	RT#1	RT#2	Resp#1	Resp#2	ng/ml	ng/ml

System Monitoring Compounds						
1) SA Tetrachlo...	4.826	4.068	96396092	138.8E6	50.817	49.722
2) SA Decachlor...	10.839	9.252	95787971	71197687	48.701	48.329
Target Compounds						
3) L1 AR-1016-1	6.003	5.181	20610387	27008657	317.014	316.692
4) L1 AR-1016-2	6.027	5.202	25015074	27018506	261.189	228.843
5) L1 AR-1016-3	6.091	5.384	12724078	17749625	207.963	276.576 #
6) L1 AR-1016-4	6.189	5.421	13954667	35947491	283.758	696.603 #
7) L1 AR-1016-5	6.485	5.641	33673388	42426816	671.785	643.167
8) L2 AR-1221-1	5.035	0.000	471744	0	18.486	N.D. #
9) L2 AR-1221-2	5.136f	4.378	1619975	2678306	83.884	99.217
10) L2 AR-1221-3	5.197	4.452	1622742	2522646	28.877	32.529
11) L3 AR-1232-1	5.197	4.452	1622742	2522646	35.866	39.908
12) L3 AR-1232-2	5.734	5.202	10147871	27018506	389.638	484.277
13) L3 AR-1232-3	6.027	5.384	25015074	17749625	552.973	589.346
14) L3 AR-1232-4	6.189	5.465	13954667	37357782	597.422	1365.413 #
15) L3 AR-1232-5	6.277	5.641	31284452	42426816	1593.535	1451.006
16) L4 AR-1242-1	6.003	5.181	20610387	27008657	376.906	375.849
17) L4 AR-1242-2	6.027	5.202	25015074	27018506	315.443	271.688
18) L4 AR-1242-3	6.091	5.384	12724078	17749625	251.721	329.987 #
19) L4 AR-1242-4	6.189	5.465	13954667	37357782	340.064	701.420 #
20) L4 AR-1242-5	6.930	5.997	35993085	55160442	825.116	928.341
21) L5 AR-1248-1	6.003	5.181	20610387	27008657	506.780	506.026
22) L5 AR-1248-2	6.277	5.421	31284452	35947491	501.971	488.386
23) L5 AR-1248-3	6.485	5.465	33673388	37357782	500.050	488.862
24) L5 AR-1248-4	6.889	5.641	36550527	42426816	513.385	482.591
25) L5 AR-1248-5	6.930	6.040	35993085	39242823	519.222	491.905
26) L6 AR-1254-1	6.863	5.997	28228641	55160442	360.344	447.669
27) L6 AR-1254-2	7.087	6.144	37175464	17521519	314.695	166.409 #
28) L6 AR-1254-3	7.450	6.556	21145701	23365299	173.278	147.654
29) L6 AR-1254-4	7.735	6.784	14724690	15988913	165.582	173.157
30) L6 AR-1254-5	8.156	7.206	4132806	4550524	42.190	35.554
31) L7 AR-1260-1	7.615	6.706	3123255	8278912	32.246	78.015 #
32) L7 AR-1260-2	7.865	6.871	4550178	2491778	40.583	20.205 #
33) L7 AR-1260-3	8.224	7.032	925781	2543448	10.604	21.931 #
34) L7 AR-1260-4	8.467	7.547f	1640046	1136080	16.366	12.899
35) L7 AR-1260-5	8.824	0.000	586684	0	3.111	N.D. #
37) L8 AR-1262-2	8.824	0.000	586684	0	2.766	N.D. #
38) L8 AR-1262-3	9.192f	0.000	821789	0	5.368	N.D. #
39) L8 AR-1262-4	9.242f	0.000	82642	0	0.682	N.D. #
41) L9 AR-1268-1	9.192f	0.000	821789	0	3.235	N.D. #
42) L9 AR-1268-2	9.242f	0.000	82642	0	0.350	N.D. #
45) L9 AR-1268-5	10.461	0.000	5658875	0	8.516	N.D. #

Data Path : Z:\pestpcbsrv\HPCHEM1\ECD_P\Data\PP061424\
 Data File : PP065693.D
 Signal(s) : Signal #1: ECD1A.ch Signal #2: ECD2B.ch
 Acq On : 14 Jun 2024 10:08
 Operator : YP\AJ
 Sample : AR1248CCC500
 Misc :
 ALS Vial : 5 Sample Multiplier: 1

Instrument :
 ECD_P
ClientSampleId :
 AR1248CCC500

Integration File signal 1: autoint1.e
 Integration File signal 2: autoint2.e
 Quant Time: Jun 14 23:08:44 2024
 Quant Method : Z:\pestpcbsrv\HPCHEM1\ECD_P\methods\PP060524.M
 Quant Title : GC EXTRACTABLES
 QLast Update : Thu Jun 06 05:25:59 2024
 Response via : Initial Calibration
 Integrator: ChemStation

Volume Inj. : 2 µl
 Signal #1 Phase : ZB-MR1 Signal #2 Phase: ZB-MR2
 Signal #1 Info : 30Mx0.32mmx 0.50µ Signal #2 Info : 30M x 0.32mm x 0.25µm

Compound	RT#1	RT#2	Resp#1	Resp#2	ng/ml	ng/ml

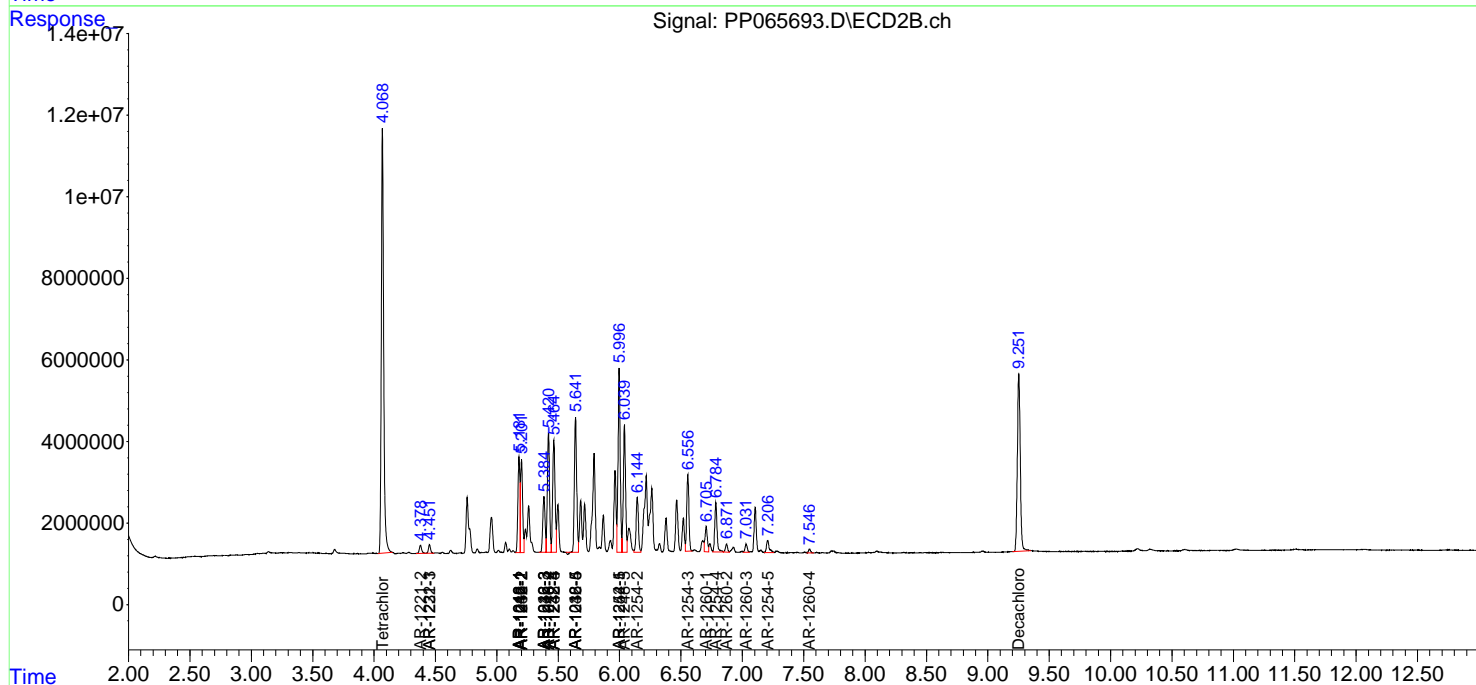
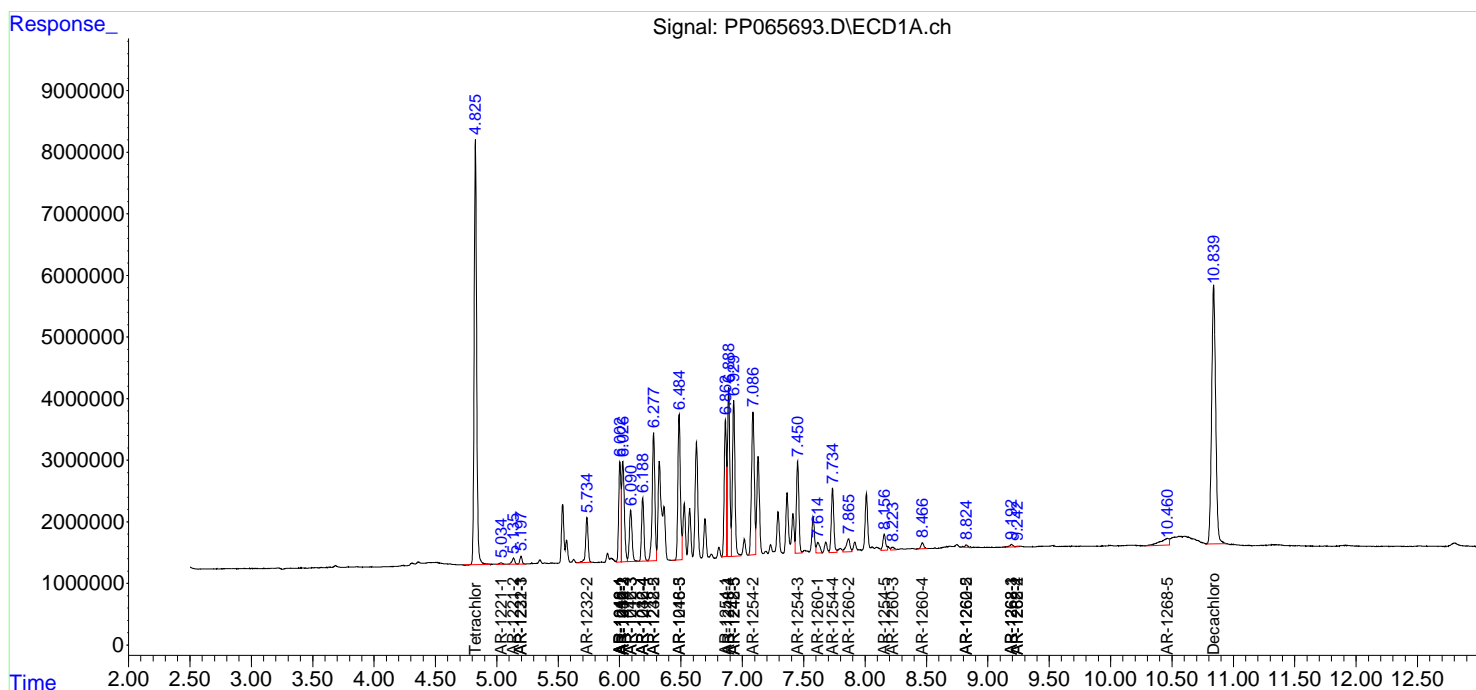
(f)=RT Delta > 1/2 Window (#)=Amounts differ by > 25% (m)=manual int.

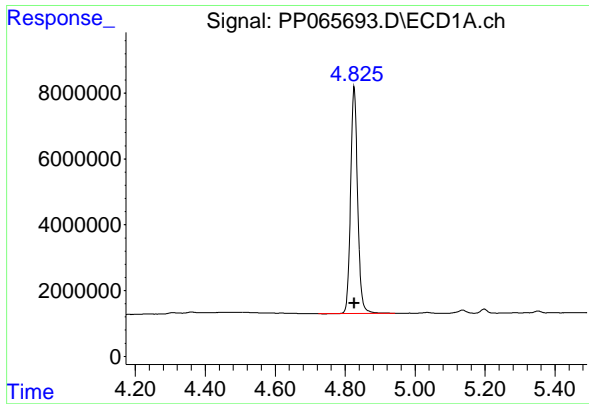
Data Path : Z:\pestpcbsrv\HPCHEM1\ECD_P\Data\PP061424\
 Data File : PP065693.D
 Signal(s) : Signal #1: ECD1A.ch Signal #2: ECD2B.ch
 Acq On : 14 Jun 2024 10:08
 Operator : YP\AJ
 Sample : AR1248CCC500
 Misc :
 ALS Vial : 5 Sample Multiplier: 1

Instrument :
 ECD_P
 ClientSampleId :
 AR1248CCC500

Integration File signal 1: autoint1.e
 Integration File signal 2: autoint2.e
 Quant Time: Jun 14 23:08:44 2024
 Quant Method : Z:\pestpcbsrv\HPCHEM1\ECD_P\methods\PP060524.M
 Quant Title : GC EXTRACTABLES
 QLast Update : Thu Jun 06 05:25:59 2024
 Response via : Initial Calibration
 Integrator: ChemStation

Volume Inj. : 2 µl
 Signal #1 Phase : ZB-MR1 Signal #2 Phase: ZB-MR2
 Signal #1 Info : 30Mx0.32mmx 0.50µm Signal #2 Info : 30M x 0.32mm x 0.25µm

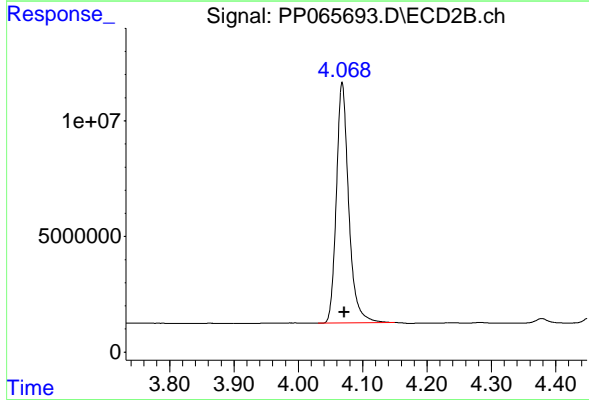




#1 Tetrachloro-m-xylene

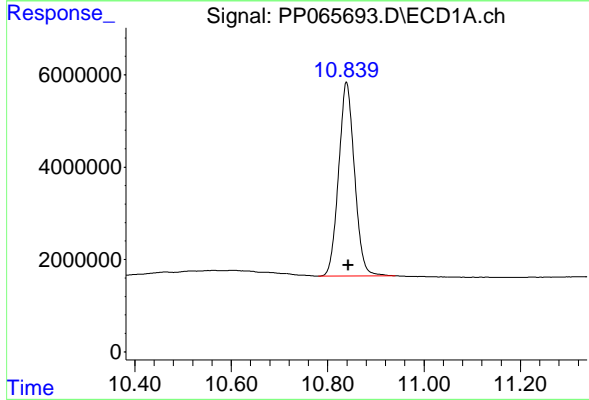
R.T.: 4.826 min
 Delta R.T.: 0.000 min
 Response: 96396092
 Conc: 50.82 ng/ml

Instrument : ECD_P
 ClientSampleId : AR1248CCC500



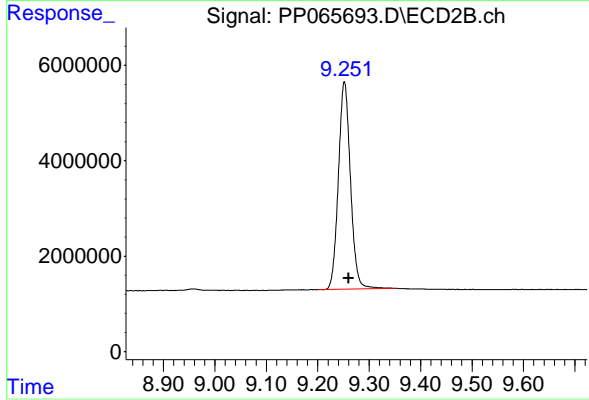
#1 Tetrachloro-m-xylene

R.T.: 4.068 min
 Delta R.T.: -0.003 min
 Response: 138840167
 Conc: 49.72 ng/ml



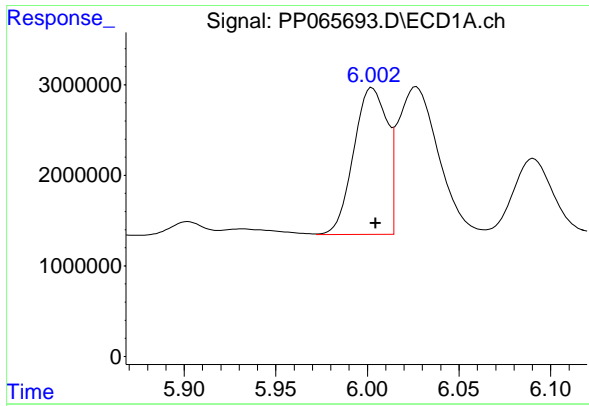
#2 Decachlorobiphenyl

R.T.: 10.839 min
 Delta R.T.: -0.003 min
 Response: 95787971
 Conc: 48.70 ng/ml



#2 Decachlorobiphenyl

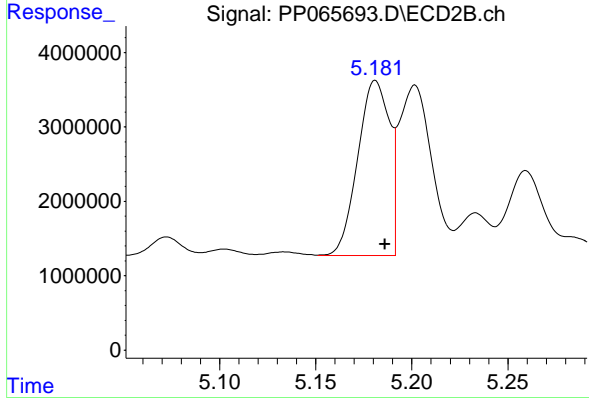
R.T.: 9.252 min
 Delta R.T.: -0.009 min
 Response: 71197687
 Conc: 48.33 ng/ml



#3 AR-1016-1

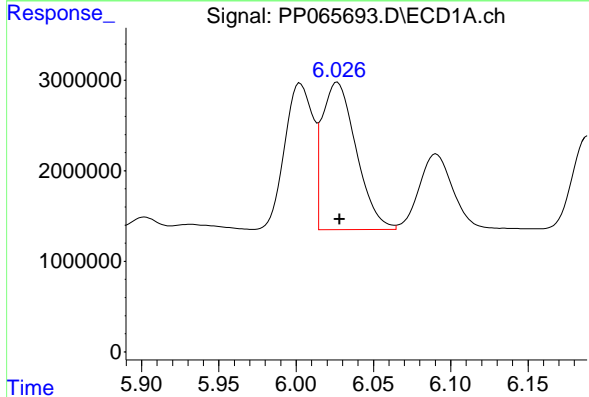
R.T.: 6.003 min
 Delta R.T.: -0.002 min
 Response: 20610387
 Conc: 317.01 ng/ml

Instrument :
 ECD_P
 ClientSampleId :
 AR1248CCC500



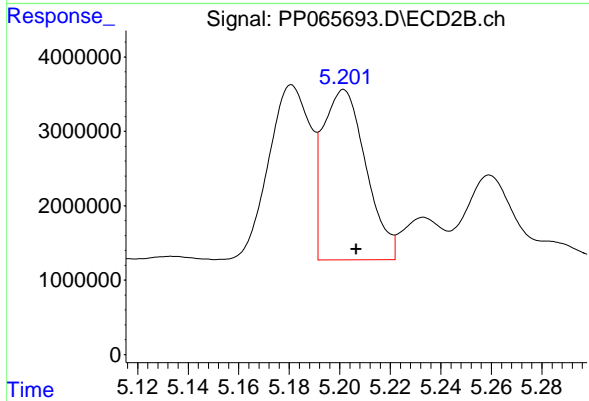
#3 AR-1016-1

R.T.: 5.181 min
 Delta R.T.: -0.005 min
 Response: 27008657
 Conc: 316.69 ng/ml



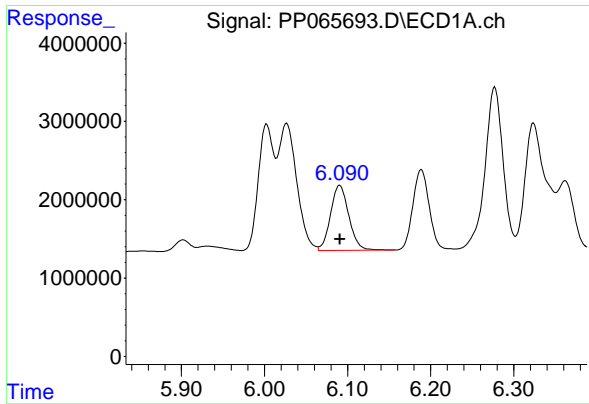
#4 AR-1016-2

R.T.: 6.027 min
 Delta R.T.: -0.001 min
 Response: 25015074
 Conc: 261.19 ng/ml



#4 AR-1016-2

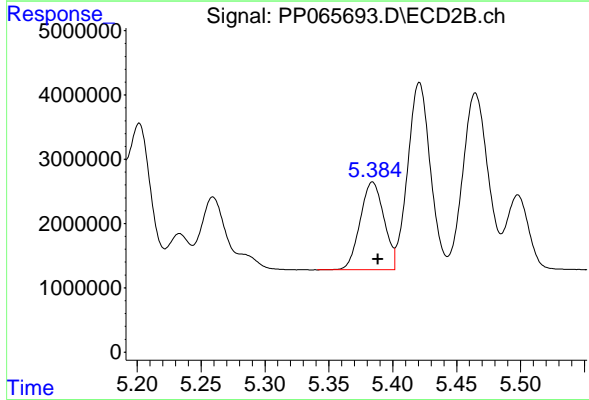
R.T.: 5.202 min
 Delta R.T.: -0.005 min
 Response: 27018506
 Conc: 228.84 ng/ml



#5 AR-1016-3

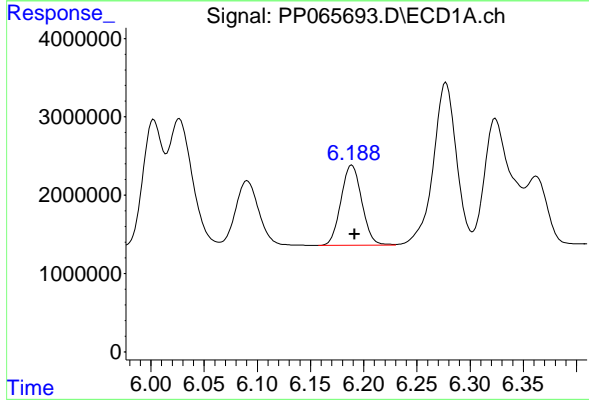
R.T.: 6.091 min
 Delta R.T.: 0.000 min
 Response: 12724078
 Conc: 207.96 ng/ml

Instrument :
 ECD_P
 ClientSampleId :
 AR1248CCC500



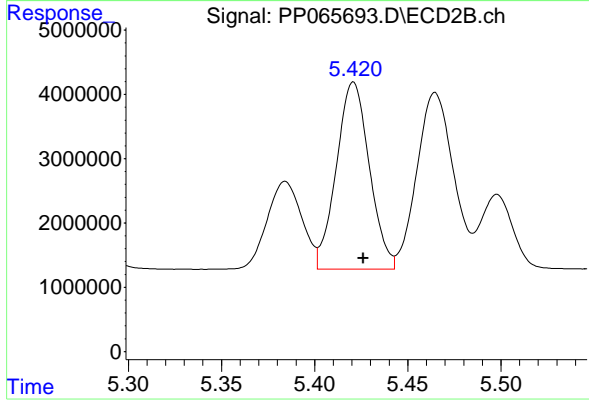
#5 AR-1016-3

R.T.: 5.384 min
 Delta R.T.: -0.004 min
 Response: 17749625
 Conc: 276.58 ng/ml



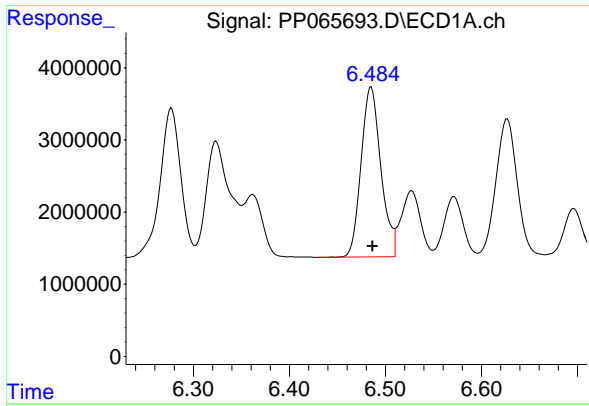
#6 AR-1016-4

R.T.: 6.189 min
 Delta R.T.: -0.003 min
 Response: 13954667
 Conc: 283.76 ng/ml



#6 AR-1016-4

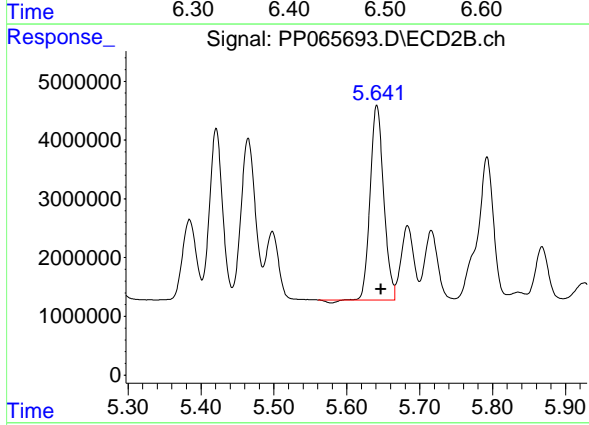
R.T.: 5.421 min
 Delta R.T.: -0.005 min
 Response: 35947491
 Conc: 696.60 ng/ml



#7 AR-1016-5

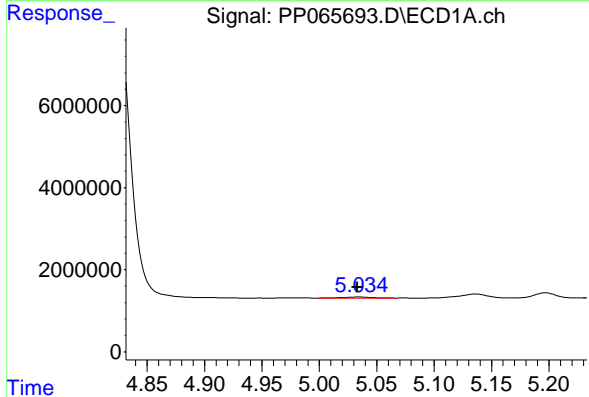
R.T.: 6.485 min
 Delta R.T.: -0.002 min
 Response: 33673388
 Conc: 671.79 ng/ml

Instrument :
 ECD_P
 ClientSampleId :
 AR1248CCC500



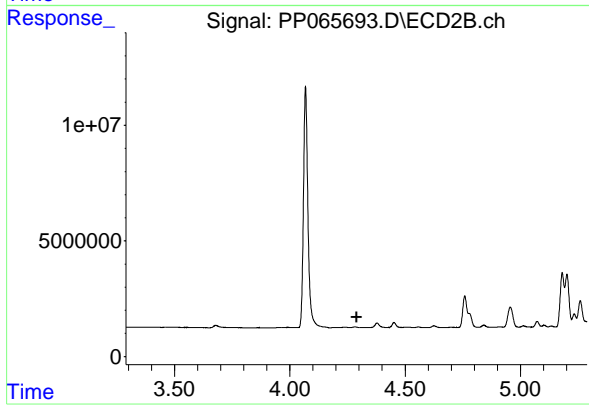
#7 AR-1016-5

R.T.: 5.641 min
 Delta R.T.: -0.006 min
 Response: 42426816
 Conc: 643.17 ng/ml



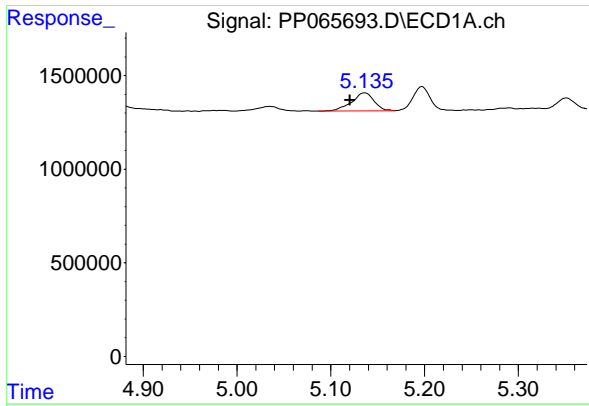
#8 AR-1221-1

R.T.: 5.035 min
 Delta R.T.: 0.002 min
 Response: 471744
 Conc: 18.49 ng/ml



#8 AR-1221-1

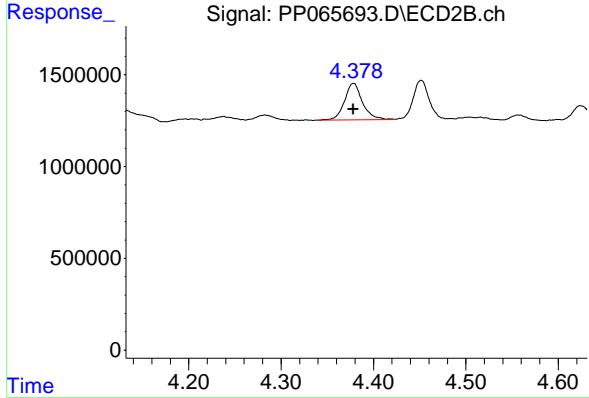
R.T.: 0.000 min
 Exp R.T. : 4.289 min
 Response: 0
 Conc: N.D.



#9 AR-1221-2

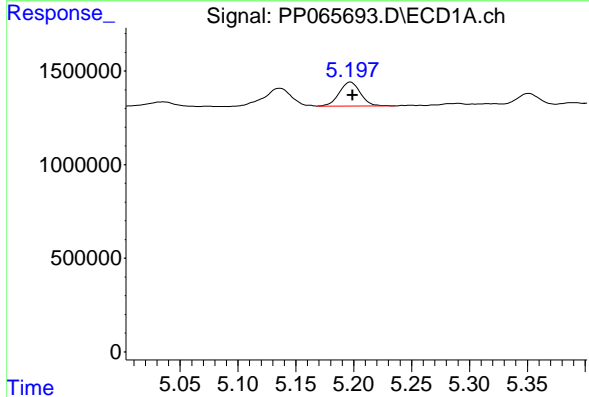
R.T.: 5.136 min
 Delta R.T.: 0.015 min
 Response: 1619975
 Conc: 83.88 ng/ml

Instrument : ECD_P
 ClientSampleId : AR1248CCC500



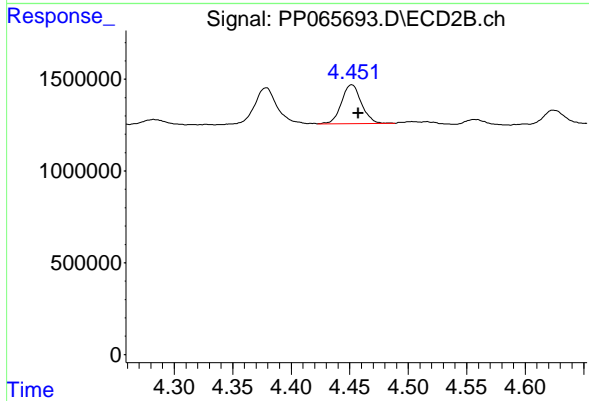
#9 AR-1221-2

R.T.: 4.378 min
 Delta R.T.: 0.000 min
 Response: 2678306
 Conc: 99.22 ng/ml



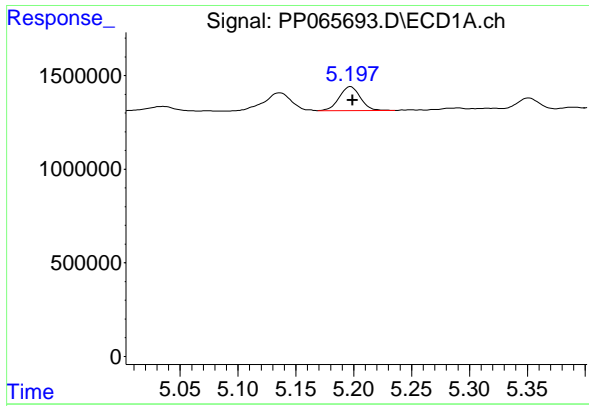
#10 AR-1221-3

R.T.: 5.197 min
 Delta R.T.: -0.002 min
 Response: 1622742
 Conc: 28.88 ng/ml



#10 AR-1221-3

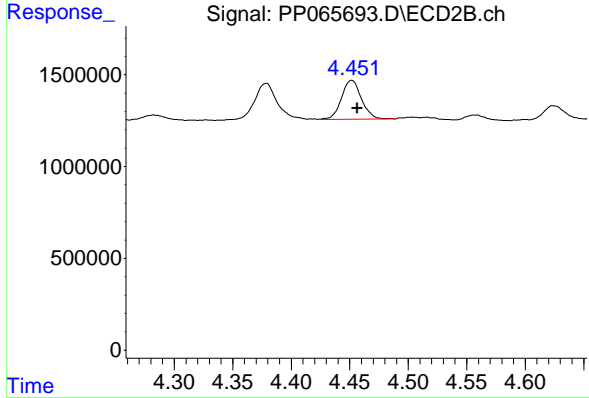
R.T.: 4.452 min
 Delta R.T.: -0.006 min
 Response: 2522646
 Conc: 32.53 ng/ml



#11 AR-1232-1

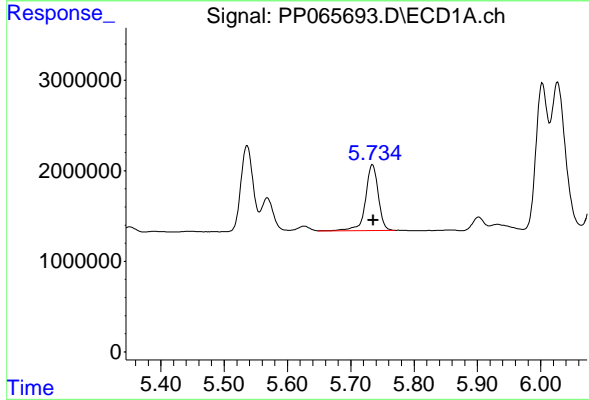
R.T.: 5.197 min
 Delta R.T.: -0.002 min
 Response: 1622742
 Conc: 35.87 ng/ml

Instrument :
 ECD_P
 ClientSampleId :
 AR1248CCC500



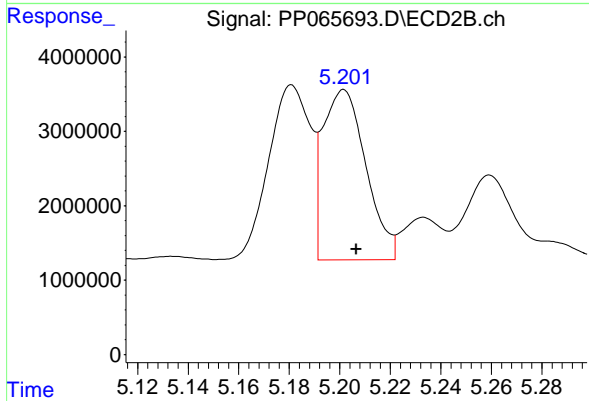
#11 AR-1232-1

R.T.: 4.452 min
 Delta R.T.: -0.005 min
 Response: 2522646
 Conc: 39.91 ng/ml



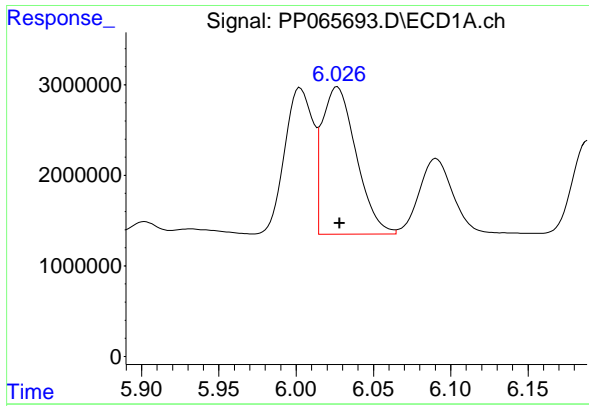
#12 AR-1232-2

R.T.: 5.734 min
 Delta R.T.: -0.002 min
 Response: 10147871
 Conc: 389.64 ng/ml



#12 AR-1232-2

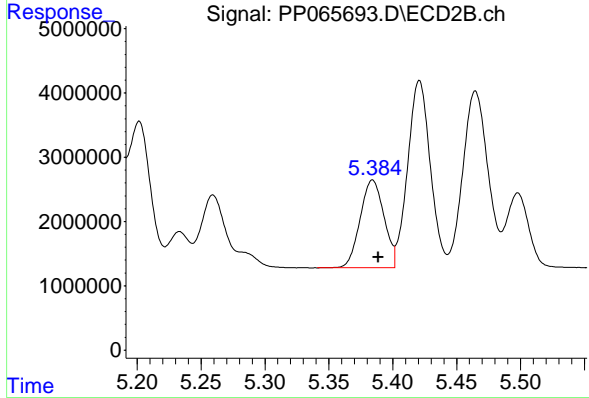
R.T.: 5.202 min
 Delta R.T.: -0.005 min
 Response: 27018506
 Conc: 484.28 ng/ml



#13 AR-1232-3

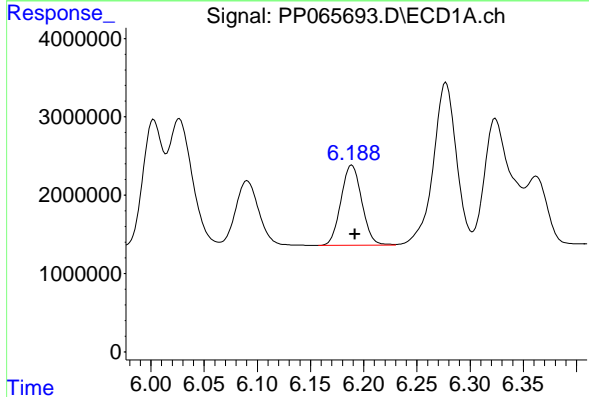
R.T.: 6.027 min
 Delta R.T.: -0.001 min
 Response: 25015074
 Conc: 552.97 ng/ml

Instrument :
 ECD_P
 ClientSampleId :
 AR1248CCC500



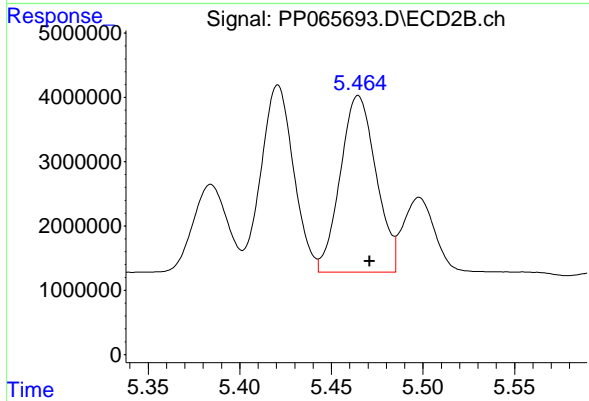
#13 AR-1232-3

R.T.: 5.384 min
 Delta R.T.: -0.005 min
 Response: 17749625
 Conc: 589.35 ng/ml



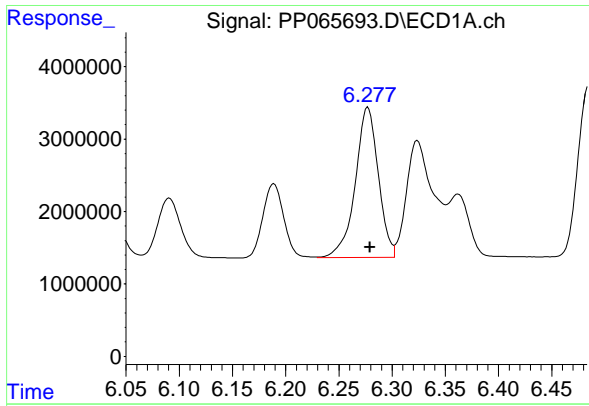
#14 AR-1232-4

R.T.: 6.189 min
 Delta R.T.: -0.003 min
 Response: 13954667
 Conc: 597.42 ng/ml



#14 AR-1232-4

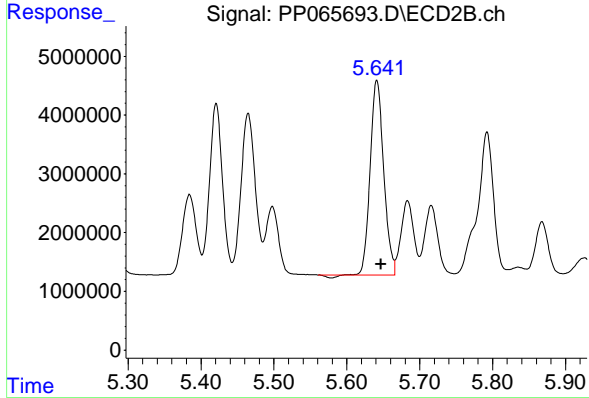
R.T.: 5.465 min
 Delta R.T.: -0.006 min
 Response: 37357782
 Conc: 1365.41 ng/ml



#15 AR-1232-5

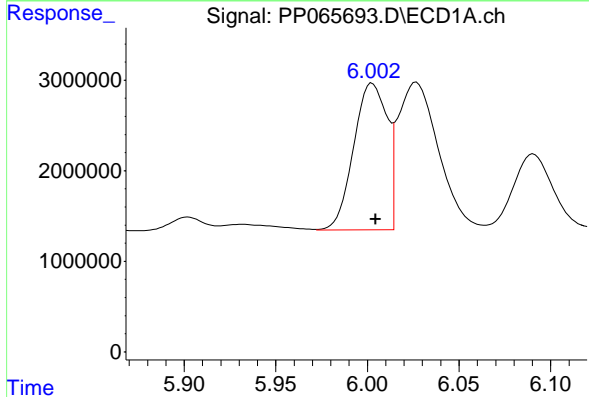
R.T.: 6.277 min
 Delta R.T.: -0.002 min
 Response: 31284452
 Conc: 1593.53 ng/ml

Instrument :
 ECD_P
 ClientSampleId :
 AR1248CCC500



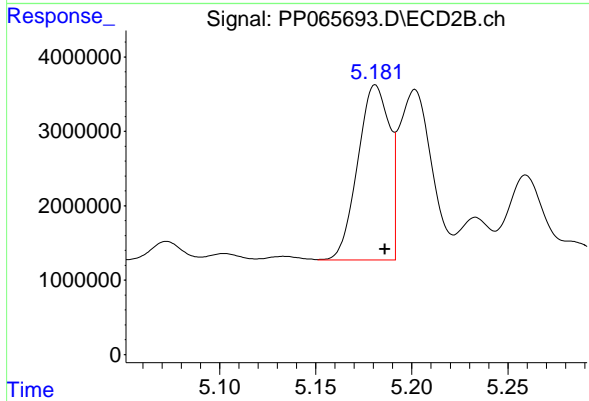
#15 AR-1232-5

R.T.: 5.641 min
 Delta R.T.: -0.006 min
 Response: 42426816
 Conc: 1451.01 ng/ml



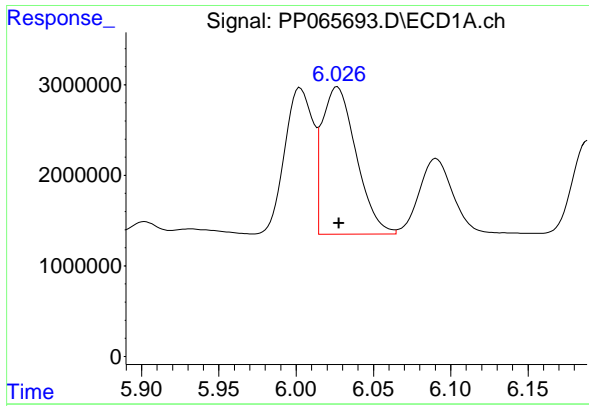
#16 AR-1242-1

R.T.: 6.003 min
 Delta R.T.: -0.002 min
 Response: 20610387
 Conc: 376.91 ng/ml



#16 AR-1242-1

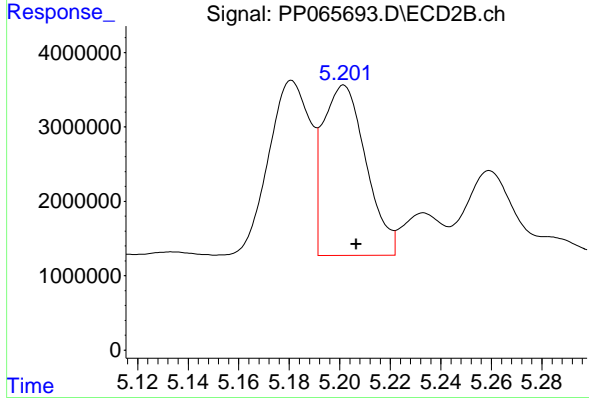
R.T.: 5.181 min
 Delta R.T.: -0.005 min
 Response: 27008657
 Conc: 375.85 ng/ml



#17 AR-1242-2

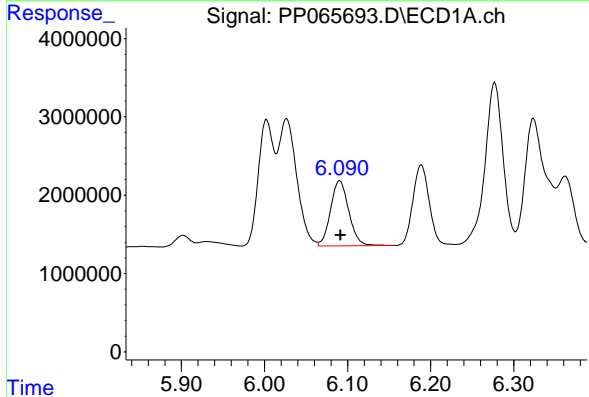
R.T.: 6.027 min
 Delta R.T.: 0.000 min
 Response: 25015074
 Conc: 315.44 ng/ml

Instrument :
 ECD_P
 ClientSampleId :
 AR1248CCC500



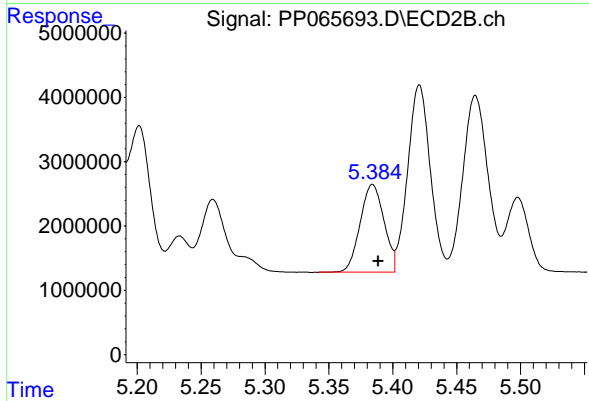
#17 AR-1242-2

R.T.: 5.202 min
 Delta R.T.: -0.005 min
 Response: 27018506
 Conc: 271.69 ng/ml



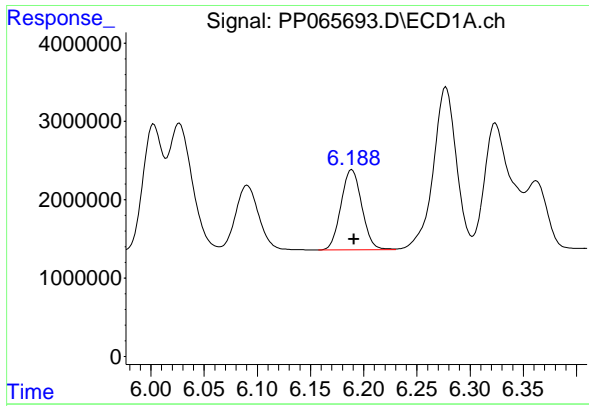
#18 AR-1242-3

R.T.: 6.091 min
 Delta R.T.: 0.000 min
 Response: 12724078
 Conc: 251.72 ng/ml



#18 AR-1242-3

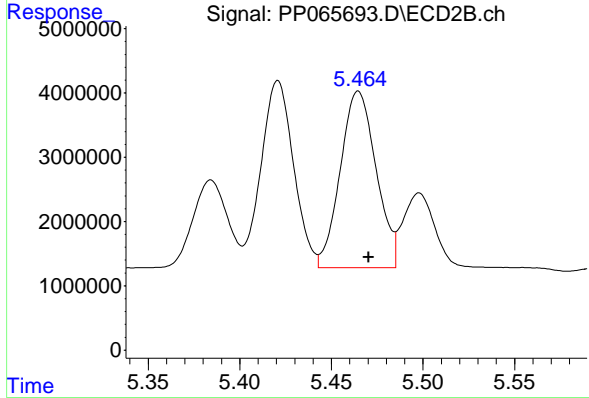
R.T.: 5.384 min
 Delta R.T.: -0.004 min
 Response: 17749625
 Conc: 329.99 ng/ml



#19 AR-1242-4

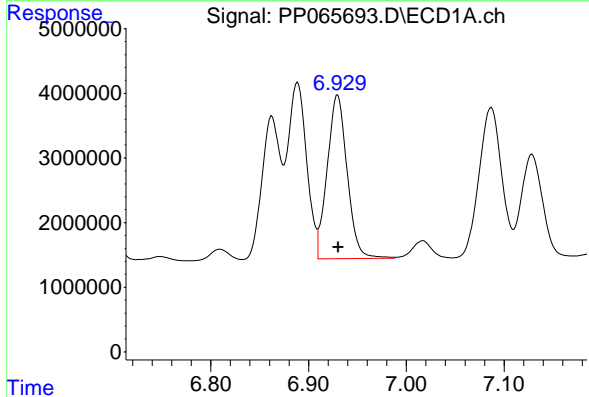
R.T.: 6.189 min
 Delta R.T.: -0.002 min
 Response: 13954667
 Conc: 340.06 ng/ml

Instrument :
 ECD_P
 ClientSampleId :
 AR1248CCC500



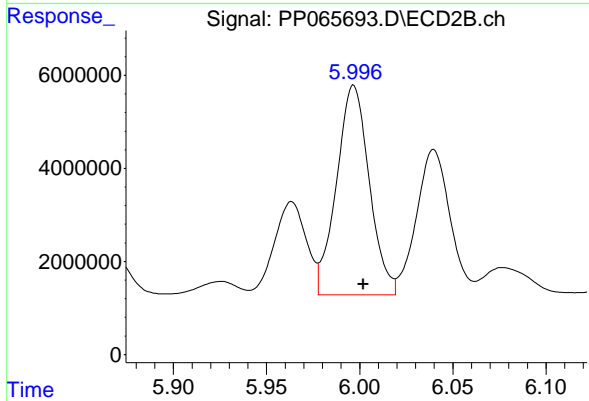
#19 AR-1242-4

R.T.: 5.465 min
 Delta R.T.: -0.006 min
 Response: 37357782
 Conc: 701.42 ng/ml



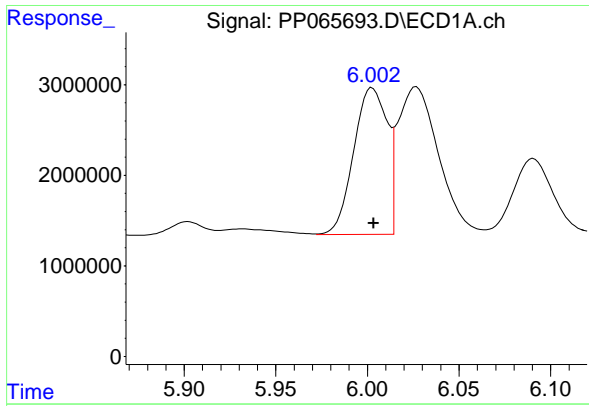
#20 AR-1242-5

R.T.: 6.930 min
 Delta R.T.: 0.000 min
 Response: 35993085
 Conc: 825.12 ng/ml



#20 AR-1242-5

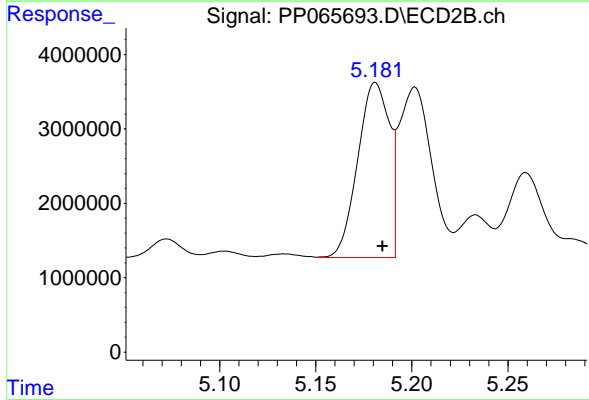
R.T.: 5.997 min
 Delta R.T.: -0.005 min
 Response: 55160442
 Conc: 928.34 ng/ml



#21 AR-1248-1

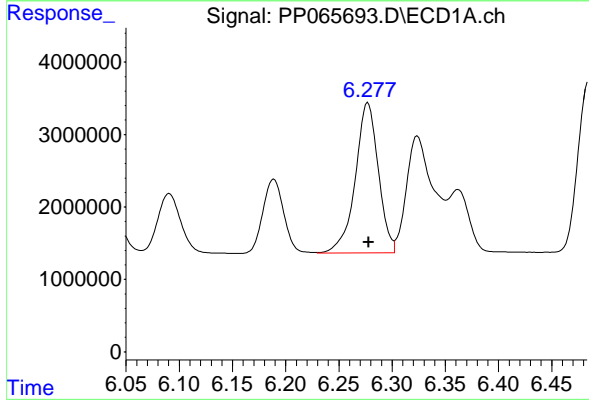
R.T.: 6.003 min
 Delta R.T.: 0.000 min
 Response: 20610387
 Conc: 506.78 ng/ml

Instrument :
 ECD_P
 ClientSampleId :
 AR1248CCC500



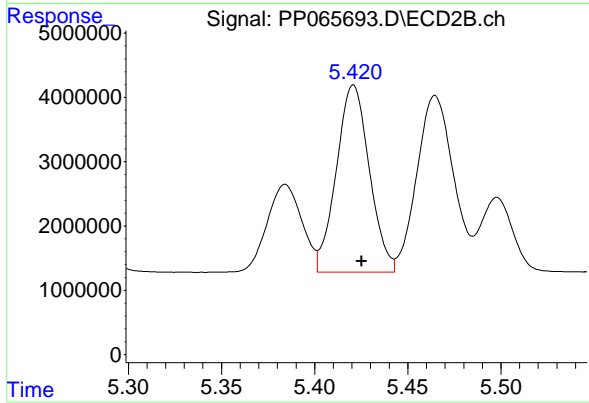
#21 AR-1248-1

R.T.: 5.181 min
 Delta R.T.: -0.004 min
 Response: 27008657
 Conc: 506.03 ng/ml



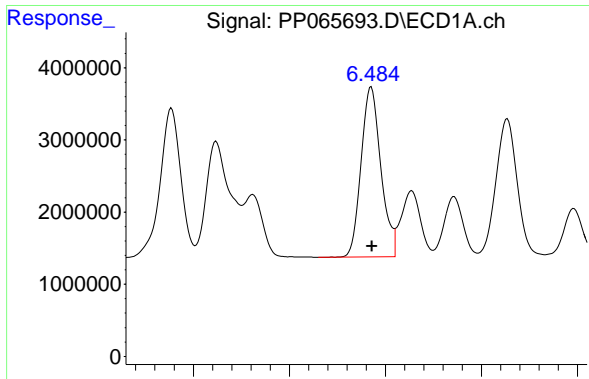
#22 AR-1248-2

R.T.: 6.277 min
 Delta R.T.: 0.000 min
 Response: 31284452
 Conc: 501.97 ng/ml



#22 AR-1248-2

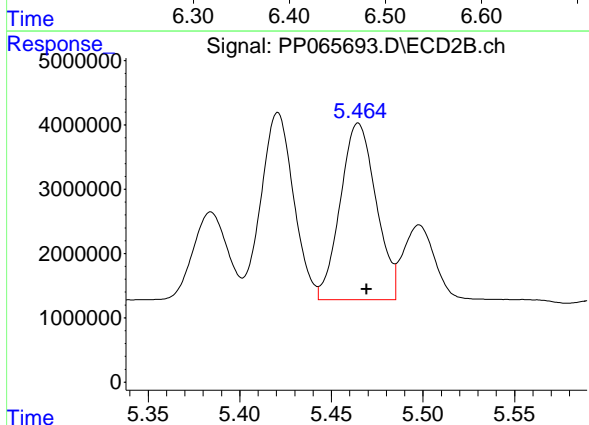
R.T.: 5.421 min
 Delta R.T.: -0.004 min
 Response: 35947491
 Conc: 488.39 ng/ml



#23 AR-1248-3

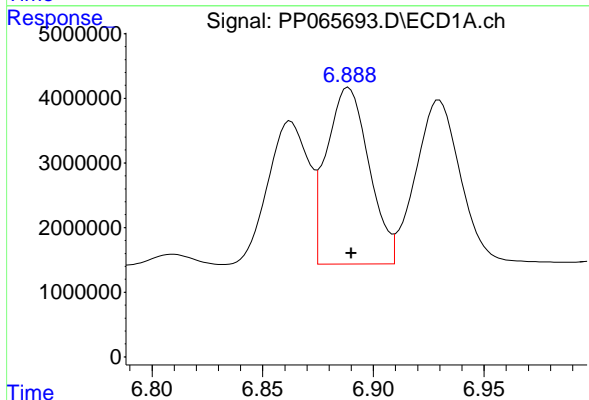
R.T.: 6.485 min
 Delta R.T.: 0.000 min
 Response: 33673388
 Conc: 500.05 ng/ml

Instrument :
 ECD_P
 ClientSampleId :
 AR1248CCC500



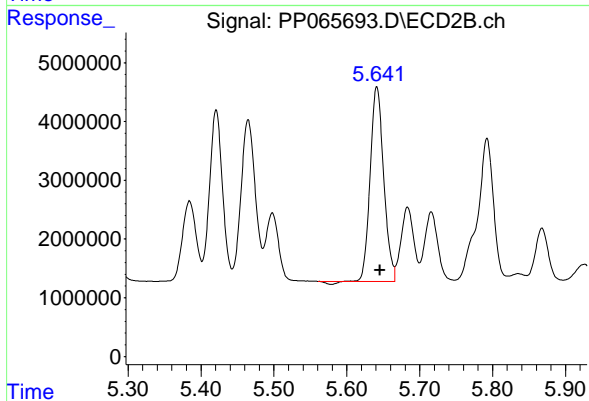
#23 AR-1248-3

R.T.: 5.465 min
 Delta R.T.: -0.005 min
 Response: 37357782
 Conc: 488.86 ng/ml



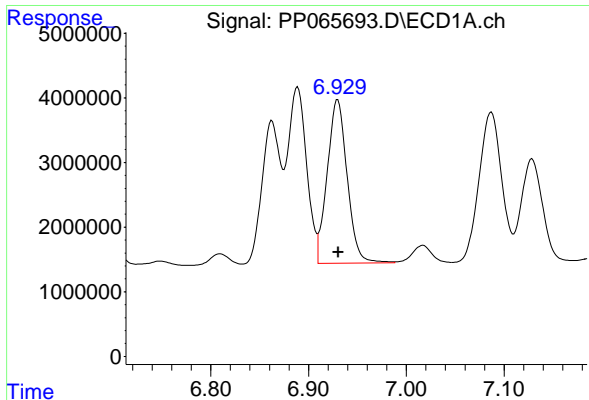
#24 AR-1248-4

R.T.: 6.889 min
 Delta R.T.: -0.001 min
 Response: 36550527
 Conc: 513.38 ng/ml



#24 AR-1248-4

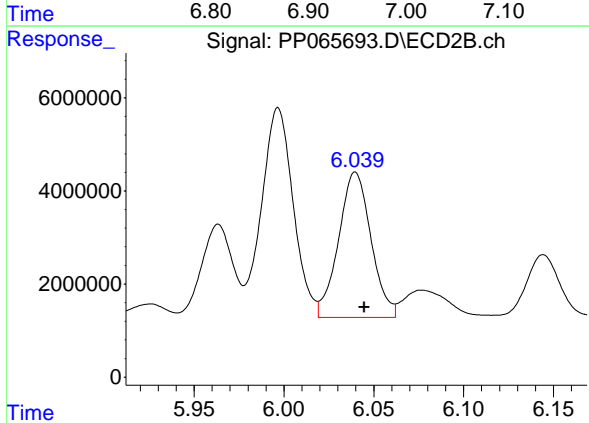
R.T.: 5.641 min
 Delta R.T.: -0.004 min
 Response: 42426816
 Conc: 482.59 ng/ml



#25 AR-1248-5

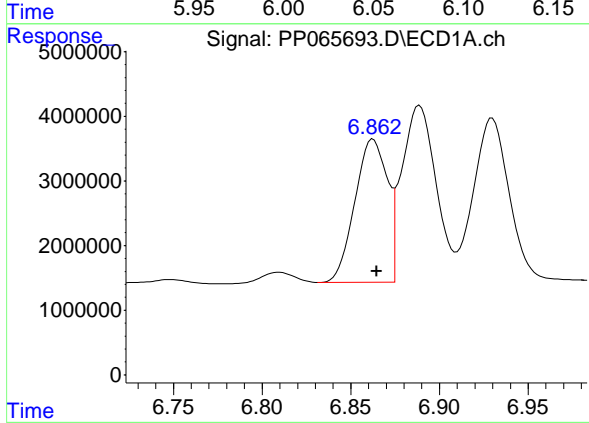
R.T.: 6.930 min
 Delta R.T.: 0.000 min
 Response: 35993085
 Conc: 519.22 ng/ml

Instrument :
 ECD_P
 ClientSampleId :
 AR1248CCC500



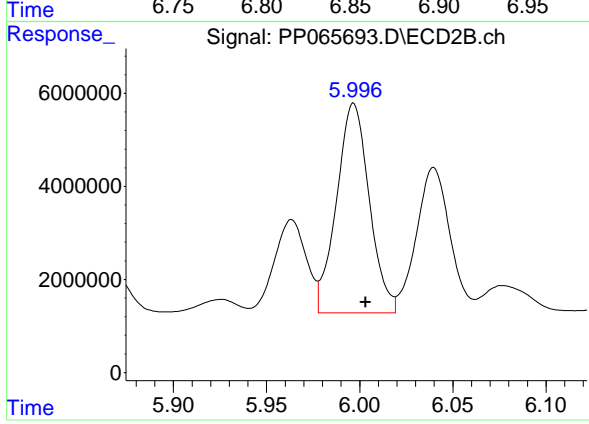
#25 AR-1248-5

R.T.: 6.040 min
 Delta R.T.: -0.005 min
 Response: 39242823
 Conc: 491.91 ng/ml



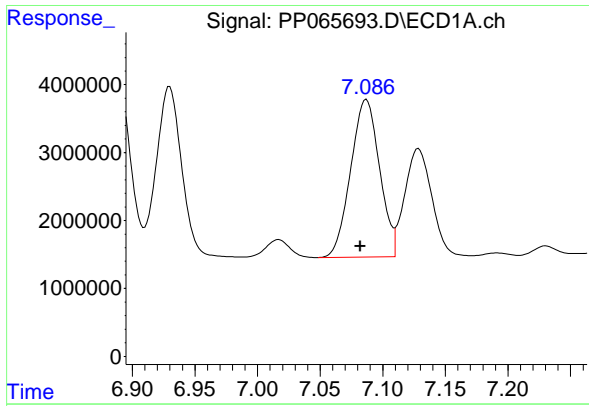
#26 AR-1254-1

R.T.: 6.863 min
 Delta R.T.: -0.002 min
 Response: 28228641
 Conc: 360.34 ng/ml



#26 AR-1254-1

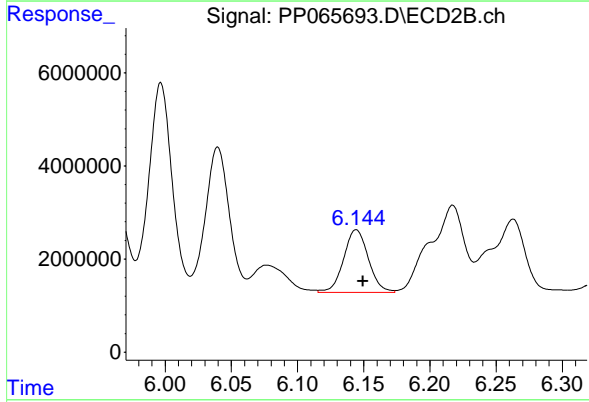
R.T.: 5.997 min
 Delta R.T.: -0.007 min
 Response: 55160442
 Conc: 447.67 ng/ml



#27 AR-1254-2

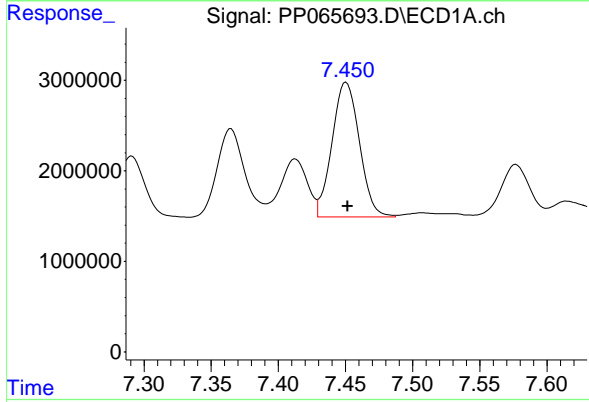
R.T.: 7.087 min
 Delta R.T.: 0.005 min
 Response: 37175464
 Conc: 314.70 ng/ml

Instrument :
 ECD_P
 ClientSampleId :
 AR1248CCC500



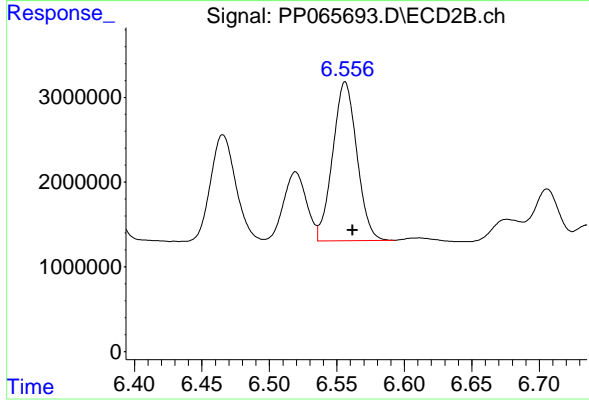
#27 AR-1254-2

R.T.: 6.144 min
 Delta R.T.: -0.005 min
 Response: 17521519
 Conc: 166.41 ng/ml



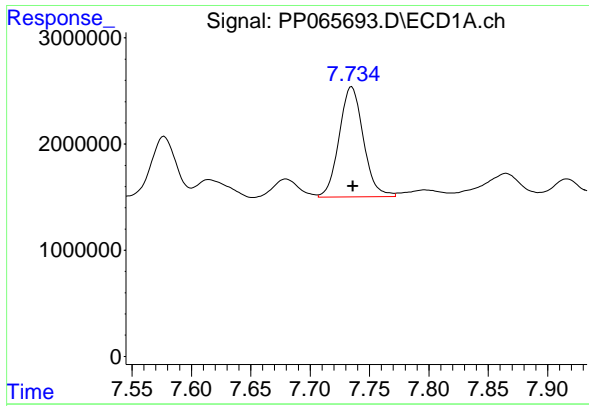
#28 AR-1254-3

R.T.: 7.450 min
 Delta R.T.: -0.001 min
 Response: 21145701
 Conc: 173.28 ng/ml



#28 AR-1254-3

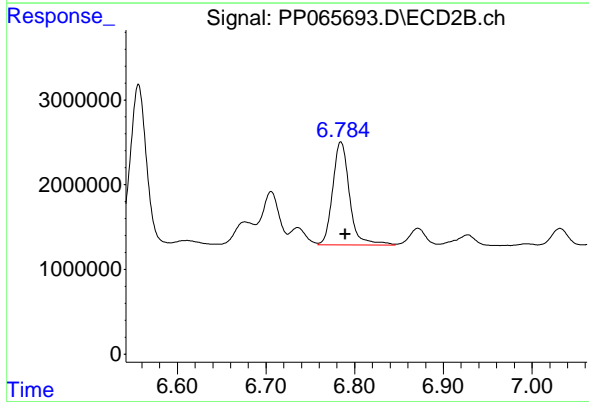
R.T.: 6.556 min
 Delta R.T.: -0.005 min
 Response: 23365299
 Conc: 147.65 ng/ml



#29 AR-1254-4

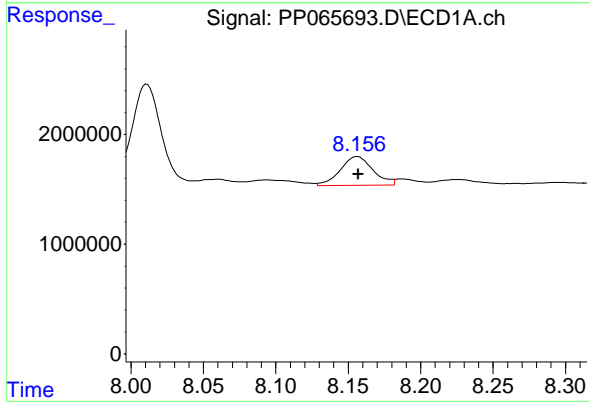
R.T.: 7.735 min
Delta R.T.: 0.000 min
Response: 14724690
Conc: 165.58 ng/ml

Instrument :
ECD_P
ClientSampleId :
AR1248CCC500



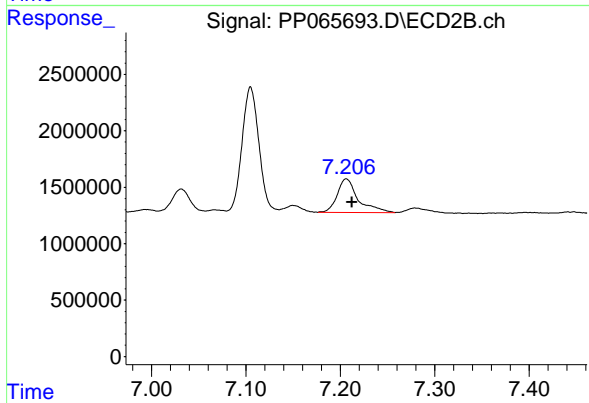
#29 AR-1254-4

R.T.: 6.784 min
Delta R.T.: -0.005 min
Response: 15988913
Conc: 173.16 ng/ml



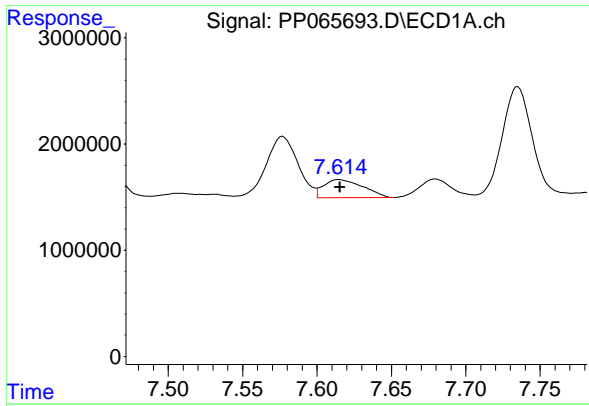
#30 AR-1254-5

R.T.: 8.156 min
Delta R.T.: 0.000 min
Response: 4132806
Conc: 42.19 ng/ml



#30 AR-1254-5

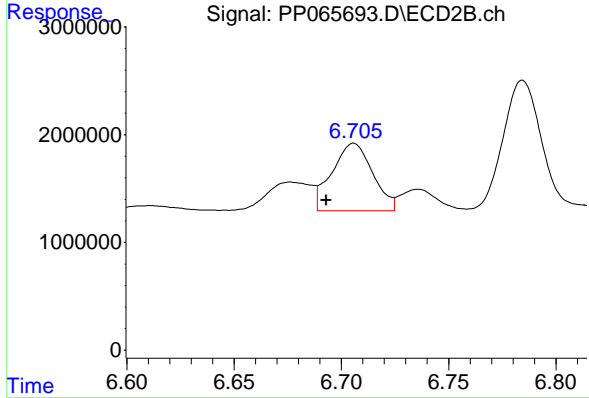
R.T.: 7.206 min
Delta R.T.: -0.006 min
Response: 4550524
Conc: 35.55 ng/ml



#31 AR-1260-1

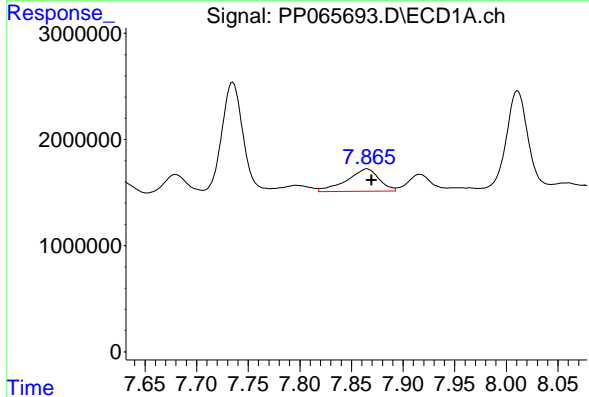
R.T.: 7.615 min
 Delta R.T.: 0.000 min
 Response: 3123255
 Conc: 32.25 ng/ml

Instrument : ECD_P
 ClientSampleId : AR1248CCC500



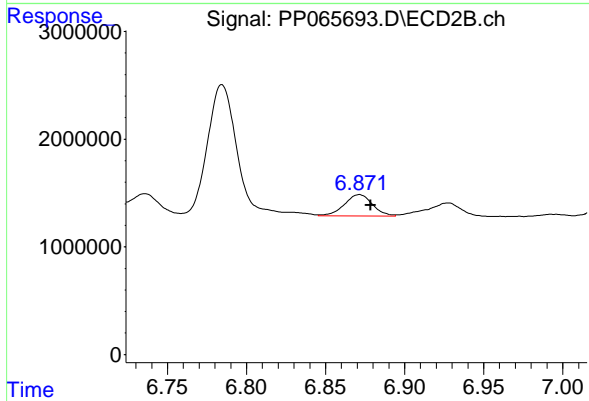
#31 AR-1260-1

R.T.: 6.706 min
 Delta R.T.: 0.013 min
 Response: 8278912
 Conc: 78.01 ng/ml



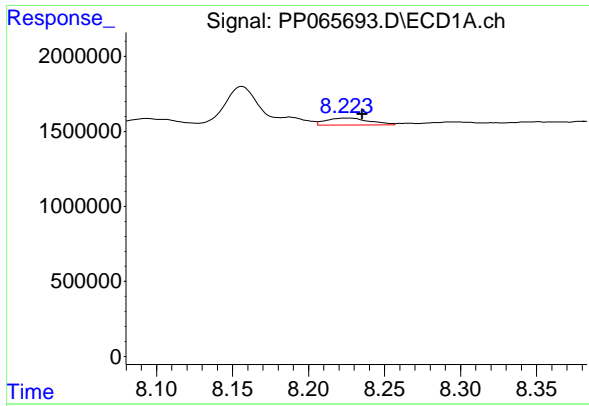
#32 AR-1260-2

R.T.: 7.865 min
 Delta R.T.: -0.004 min
 Response: 4550178
 Conc: 40.58 ng/ml



#32 AR-1260-2

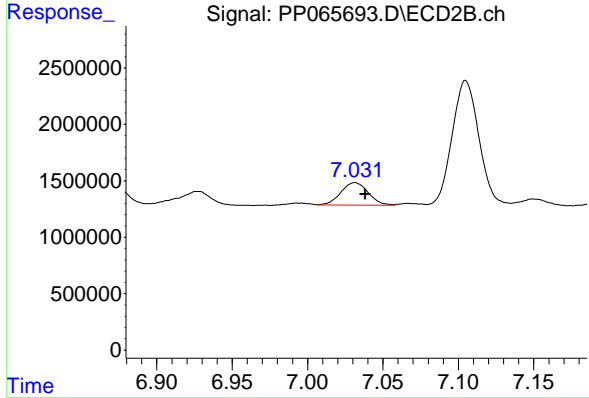
R.T.: 6.871 min
 Delta R.T.: -0.007 min
 Response: 2491778
 Conc: 20.20 ng/ml



#33 AR-1260-3

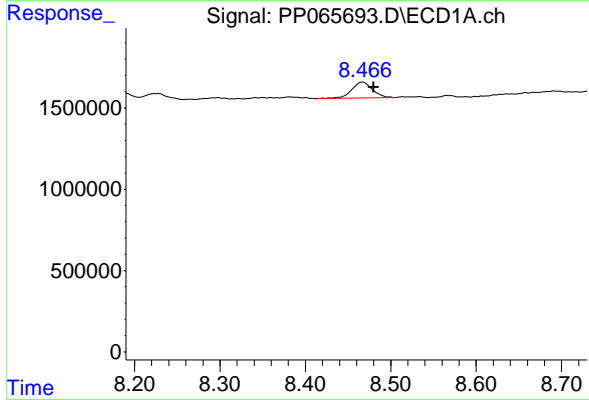
R.T.: 8.224 min
 Delta R.T.: -0.011 min
 Response: 925781
 Conc: 10.60 ng/ml

Instrument :
 ECD_P
 ClientSampleId :
 AR1248CCC500



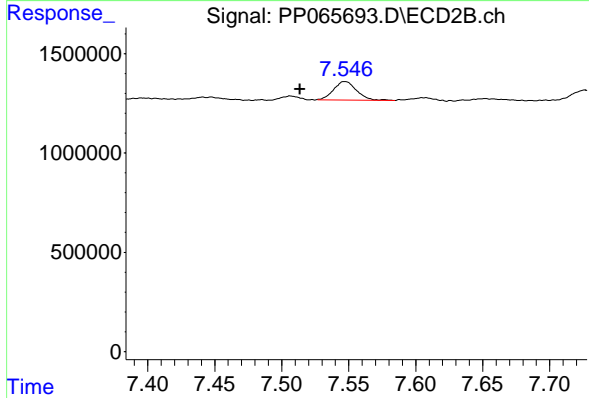
#33 AR-1260-3

R.T.: 7.032 min
 Delta R.T.: -0.007 min
 Response: 2543448
 Conc: 21.93 ng/ml



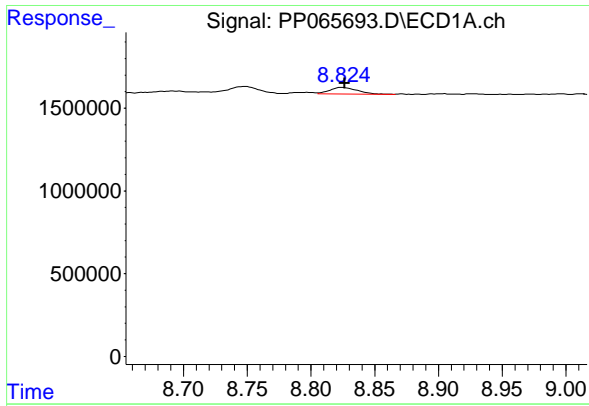
#34 AR-1260-4

R.T.: 8.467 min
 Delta R.T.: -0.013 min
 Response: 1640046
 Conc: 16.37 ng/ml



#34 AR-1260-4

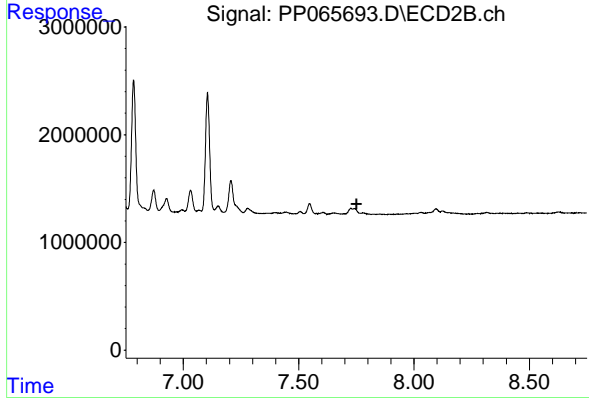
R.T.: 7.547 min
 Delta R.T.: 0.034 min
 Response: 1136080
 Conc: 12.90 ng/ml



#35 AR-1260-5

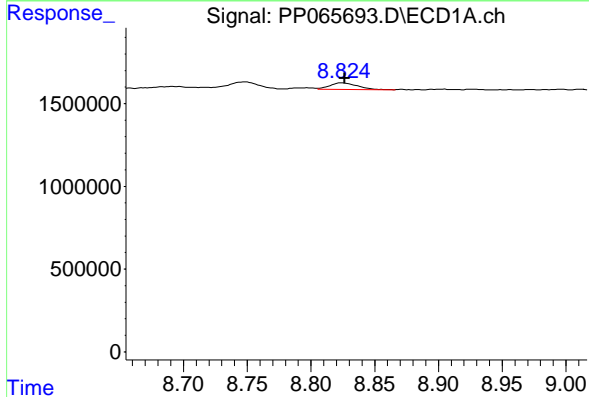
R.T.: 8.824 min
 Delta R.T.: -0.002 min
 Response: 586684
 Conc: 3.11 ng/ml

Instrument :
 ECD_P
 ClientSampleId :
 AR1248CCC500



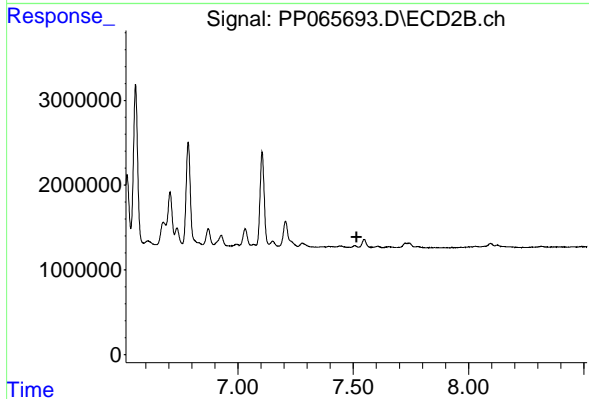
#35 AR-1260-5

R.T.: 0.000 min
 Exp R.T. : 7.751 min
 Response: 0
 Conc: N.D.



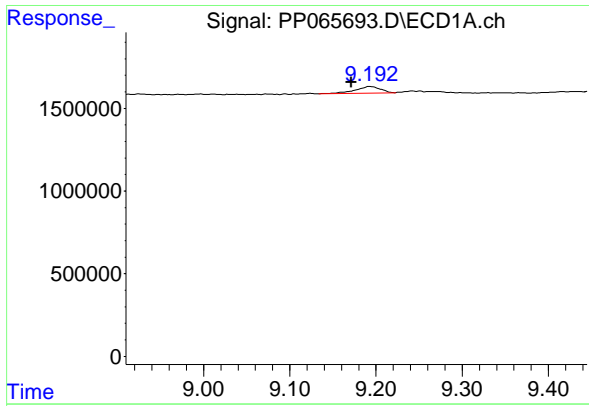
#37 AR-1262-2

R.T.: 8.824 min
 Delta R.T.: -0.002 min
 Response: 586684
 Conc: 2.77 ng/ml



#37 AR-1262-2

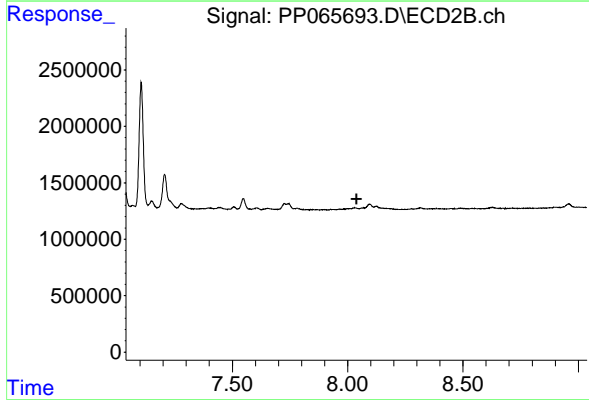
R.T.: 0.000 min
 Exp R.T. : 7.514 min
 Response: 0
 Conc: N.D.



#38 AR-1262-3

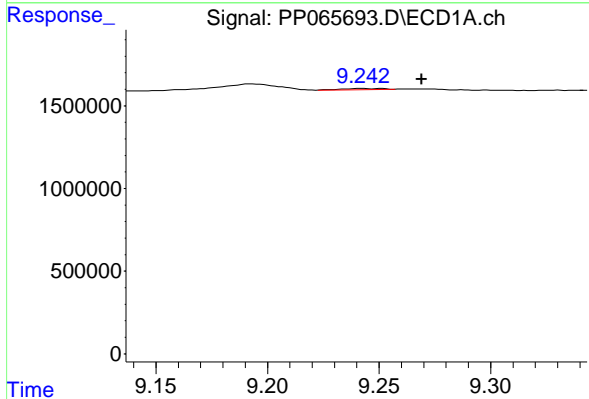
R.T.: 9.192 min
 Delta R.T.: 0.021 min
 Response: 821789
 Conc: 5.37 ng/ml

Instrument :
 ECD_P
 ClientSampleId :
 AR1248CCC500



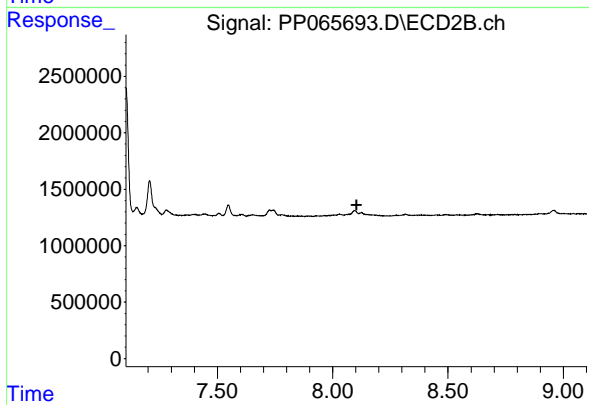
#38 AR-1262-3

R.T.: 0.000 min
 Exp R.T. : 8.038 min
 Response: 0
 Conc: N.D.



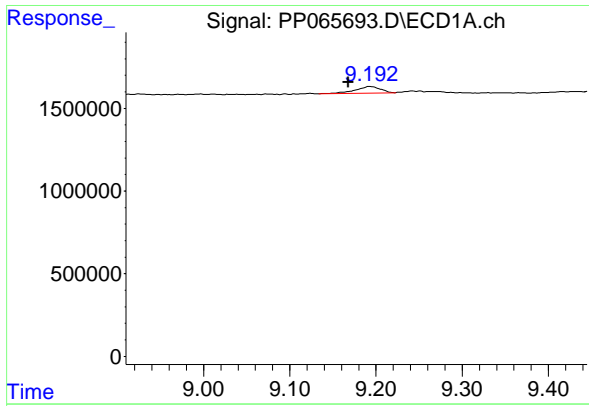
#39 AR-1262-4

R.T.: 9.242 min
 Delta R.T.: -0.027 min
 Response: 82642
 Conc: 0.68 ng/ml



#39 AR-1262-4

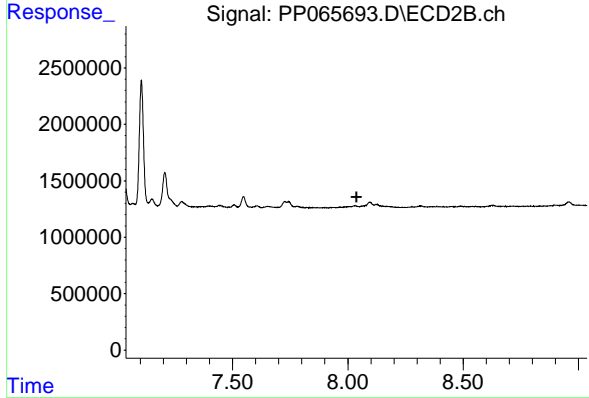
R.T.: 0.000 min
 Exp R.T. : 8.103 min
 Response: 0
 Conc: N.D.



#41 AR-1268-1

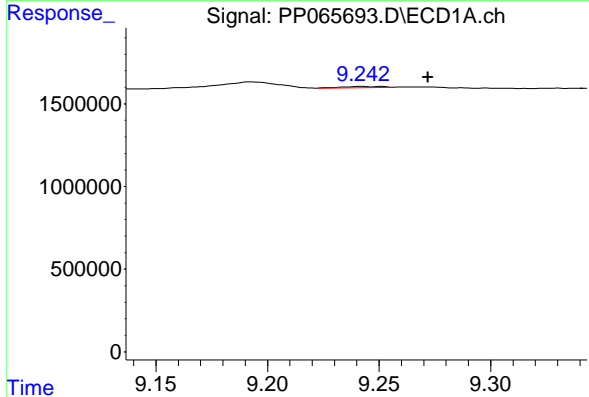
R.T.: 9.192 min
 Delta R.T.: 0.025 min
 Response: 821789
 Conc: 3.24 ng/ml

Instrument :
 ECD_P
 ClientSampleId :
 AR1248CCC500



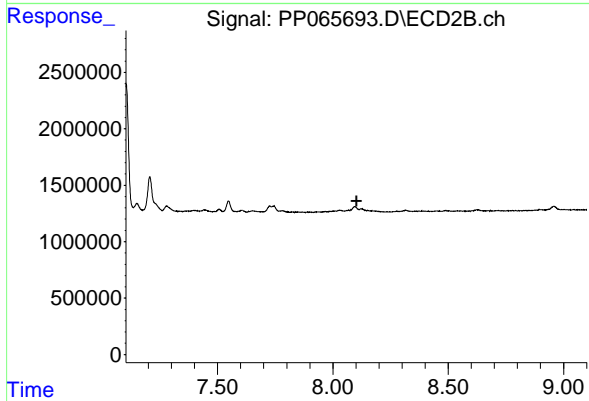
#41 AR-1268-1

R.T.: 0.000 min
 Exp R.T. : 8.037 min
 Response: 0
 Conc: N.D.



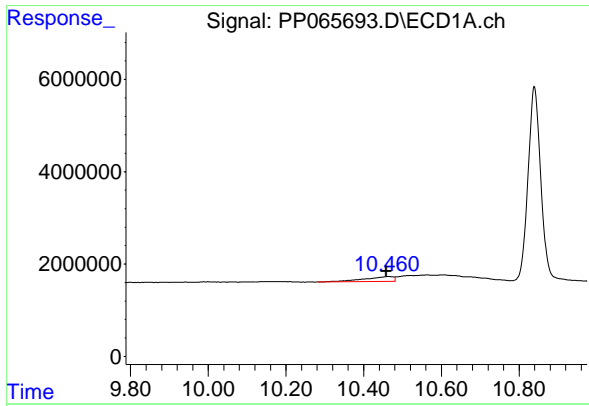
#42 AR-1268-2

R.T.: 9.242 min
 Delta R.T.: -0.030 min
 Response: 82642
 Conc: 0.35 ng/ml



#42 AR-1268-2

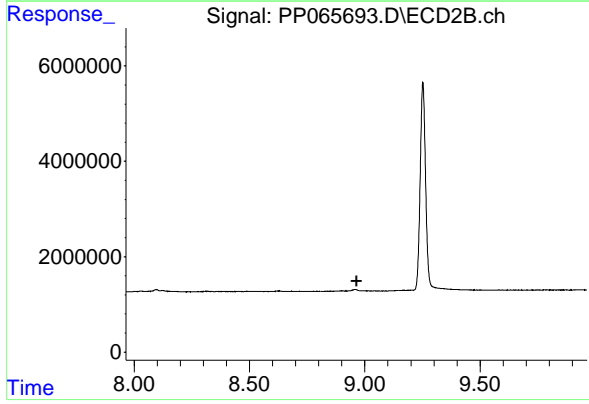
R.T.: 0.000 min
 Exp R.T. : 8.102 min
 Response: 0
 Conc: N.D.



#45 AR-1268-5

R.T.: 10.461 min
Delta R.T.: 0.002 min
Response: 5658875
Conc: 8.52 ng/ml

Instrument :
ECD_P
ClientSampleId :
AR1248CCC500



#45 AR-1268-5

R.T.: 0.000 min
Exp R.T. : 8.964 min
Response: 0
Conc: N.D.