

Data Path : Z:\pestpcbsrv\HPCHEM1\ECD\_P\Data\PP061424\  
 Data File : PP065701.D  
 Signal(s) : Signal #1: ECD1A.ch Signal #2: ECD2B.ch  
 Acq On : 14 Jun 2024 14:54  
 Operator : YP\AJ  
 Sample : P2889-01MS  
 Misc :  
 ALS Vial : 12 Sample Multiplier: 1

Instrument :  
 ECD\_P  
 ClientSampleId :  
 WCS-TPJMS

Integration File signal 1: autoint1.e  
 Integration File signal 2: autoint2.e  
 Quant Time: Jun 14 23:11:07 2024  
 Quant Method : Z:\pestpcbsrv\HPCHEM1\ECD\_P\methods\PP060524.M  
 Quant Title : GC EXTRACTABLES  
 QLast Update : Thu Jun 06 05:25:59 2024  
 Response via : Initial Calibration  
 Integrator: ChemStation

Volume Inj. : 2 µl  
 Signal #1 Phase : ZB-MR2 Signal #2 Phase: ZB-MR2  
 Signal #1 Info : 30Mx0.32mmx 0.50µ Signal #2 Info : 30M x 0.32mm x 0.25µm

Compound	RT#1	RT#2	Resp#1	Resp#2	ng/ml	ng/ml
-----						
System Monitoring Compounds						
1) SA Tetrachlo...	4.825	4.068	42423019	60135683	22.364	21.536
2) SA Decachlor...	10.842	9.253	41137123	29801120	20.915	20.229
Target Compounds						
3) L1 AR-1016-1	6.004	5.182	32662158	41550867	502.385	487.208
4) L1 AR-1016-2	6.026	5.202	47861930	56563872	499.738	479.088
5) L1 AR-1016-3	6.090	5.384	31217458	31159953	510.219	485.536
6) L1 AR-1016-4	6.190	5.421	25061765	24896267	509.613	482.448
7) L1 AR-1016-5	6.485	5.641	25210296	31027874	502.946	470.365
8) L2 AR-1221-1	5.027	4.283	3243639	4859464	127.105	139.665
9) L2 AR-1221-2	5.119	4.373	4110598	6363406	212.851	235.730
10) L2 AR-1221-3	5.197	4.452	18146154	25051882	322.919	323.034
11) L3 AR-1232-1	5.197	4.452	18146154	25051882	401.063	396.322
12) L3 AR-1232-2	5.734	5.202	25624645	56563872	983.886	1013.845
13) L3 AR-1232-3	6.026	5.384	47861930	31159953	1058.016	1034.612
14) L3 AR-1232-4	6.190	5.465	25061765	30010538	1072.935	1096.874
15) L3 AR-1232-5	6.277	5.641	23419185	31027874	1192.902	1061.160
16) L4 AR-1242-1	6.004	5.182	32662158	41550867	597.299	578.216
17) L4 AR-1242-2	6.026	5.202	47861930	56563872	603.545	568.786
18) L4 AR-1242-3	6.090	5.384	31217458	31159953	617.577	579.301
19) L4 AR-1242-4	6.190	5.465	25061765	30010538	610.735	563.470
20) L4 AR-1242-5	6.930	5.998	3420875	23424432	78.421	394.229 #
21) L5 AR-1248-1	6.004	5.182	32662158	41550867	803.116	778.484
22) L5 AR-1248-2	6.277	5.421	23419185	24896267	375.770	338.243
23) L5 AR-1248-3	6.485	5.465	25210296	30010538	374.373	392.716
24) L5 AR-1248-4	6.864f	5.641	22794811	31027874	320.174	352.932
25) L5 AR-1248-5	6.930	6.040	3420875	3724449	49.348	46.686
26) L6 AR-1254-1	6.864	5.998	22794811	23424432	290.980	190.107 #
27) L6 AR-1254-2	7.081	6.145	20529141	22096881	173.782	209.863
28) L6 AR-1254-3	7.451	6.570	15247435	44461969	124.945	280.972 #
29) L6 AR-1254-4	7.736	6.785	9015384	4084777	101.380	44.237 #
30) L6 AR-1254-5	8.156	7.207	72117253	60462197	736.205	472.396 #
31) L7 AR-1260-1	7.614	6.687	47657781	45668262	492.048	430.346
32) L7 AR-1260-2	7.869	6.873	54143009	53697141	482.902	435.409
33) L7 AR-1260-3	8.234	7.032	35267619	50902299	403.948	438.905
34) L7 AR-1260-4	8.478	7.508	44246371	34825468	441.531	395.404
35) L7 AR-1260-5	8.825	7.745	78853152	77490830	418.130	404.839
36) L8 AR-1262-1	8.296	7.297	19668846	23136445	367.102	415.989
37) L8 AR-1262-2	8.825	7.508	78853152	34825468	371.718	312.542
38) L8 AR-1262-3	9.187f	8.032	54589922	16915606	356.569	199.121 #
39) L8 AR-1262-4	9.249f	8.098	32335181	72947728	266.879	475.182 #
40) L8 AR-1262-5	9.995	8.629	19794827	17979311	243.730	255.994
41) L9 AR-1268-1	9.187f	8.032	54589922	16915606	214.922	73.098 #

Data Path : Z:\pestpcbsrv\HPCHEM1\ECD\_P\Data\PP061424\  
 Data File : PP065701.D  
 Signal(s) : Signal #1: ECD1A.ch Signal #2: ECD2B.ch  
 Acq On : 14 Jun 2024 14:54  
 Operator : YP\AJ  
 Sample : P2889-01MS  
 Misc :  
 ALS Vial : 12 Sample Multiplier: 1

**Instrument :**  
 ECD\_P  
**ClientSampleId :**  
 WCS-TPJMS

Integration File signal 1: autoint1.e  
 Integration File signal 2: autoint2.e  
 Quant Time: Jun 14 23:11:07 2024  
 Quant Method : Z:\pestpcbsrv\HPCHEM1\ECD\_P\methods\PP060524.M  
 Quant Title : GC EXTRACTABLES  
 QLast Update : Thu Jun 06 05:25:59 2024  
 Response via : Initial Calibration  
 Integrator: ChemStation

Volume Inj. : 2 µl  
 Signal #1 Phase : ZB-MR1 Signal #2 Phase: ZB-MR2  
 Signal #1 Info : 30Mx0.32mmx 0.50µ Signal #2 Info : 30M x 0.32mm x 0.25µm

	Compound	RT#1	RT#2	Resp#1	Resp#2	ng/ml	ng/ml
42)	L9 AR-1268-2	9.249f	8.098	32335181	72947728	136.879	347.586 #
43)	L9 AR-1268-3	9.527	8.318	1616602	2057226	7.959	11.767 #
44)	L9 AR-1268-4	9.995	8.629	19794827	17979311	237.536	237.137
45)	L9 AR-1268-5	10.460	8.959	8424365	6025152	12.678	11.503

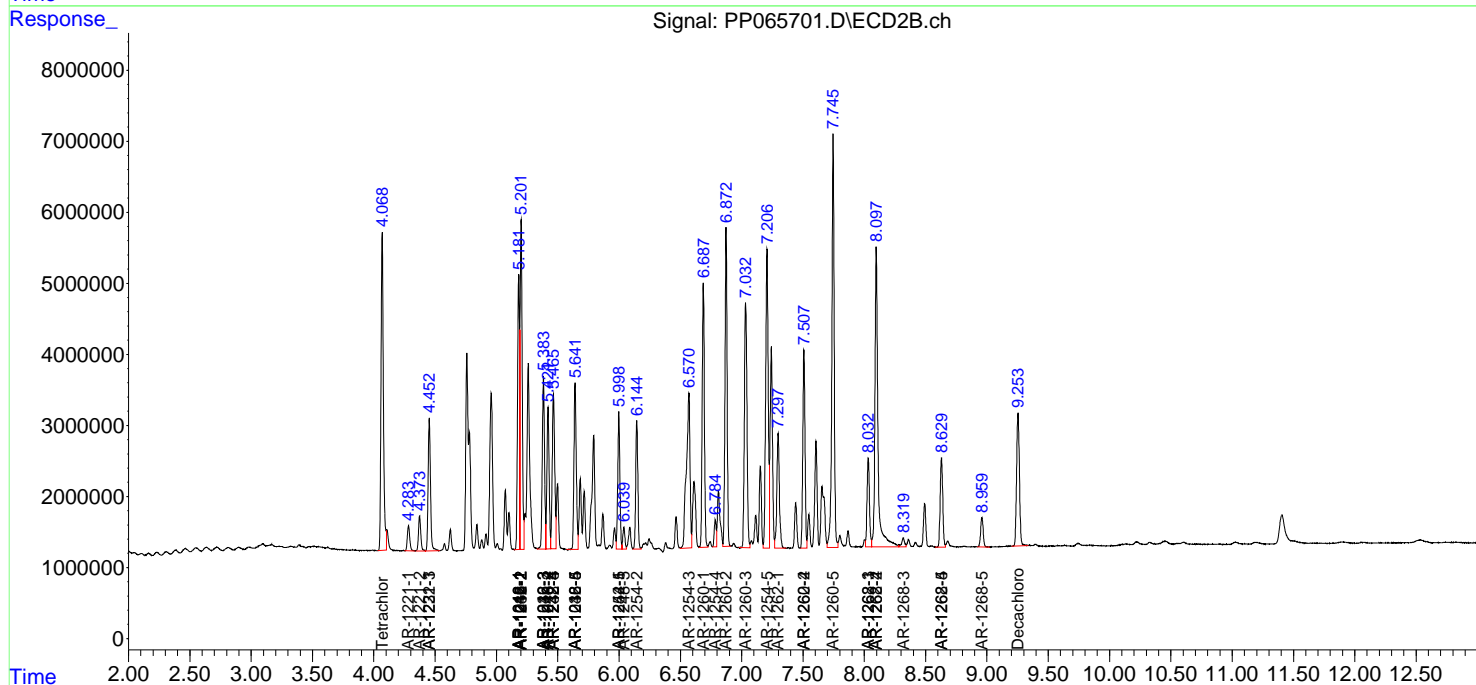
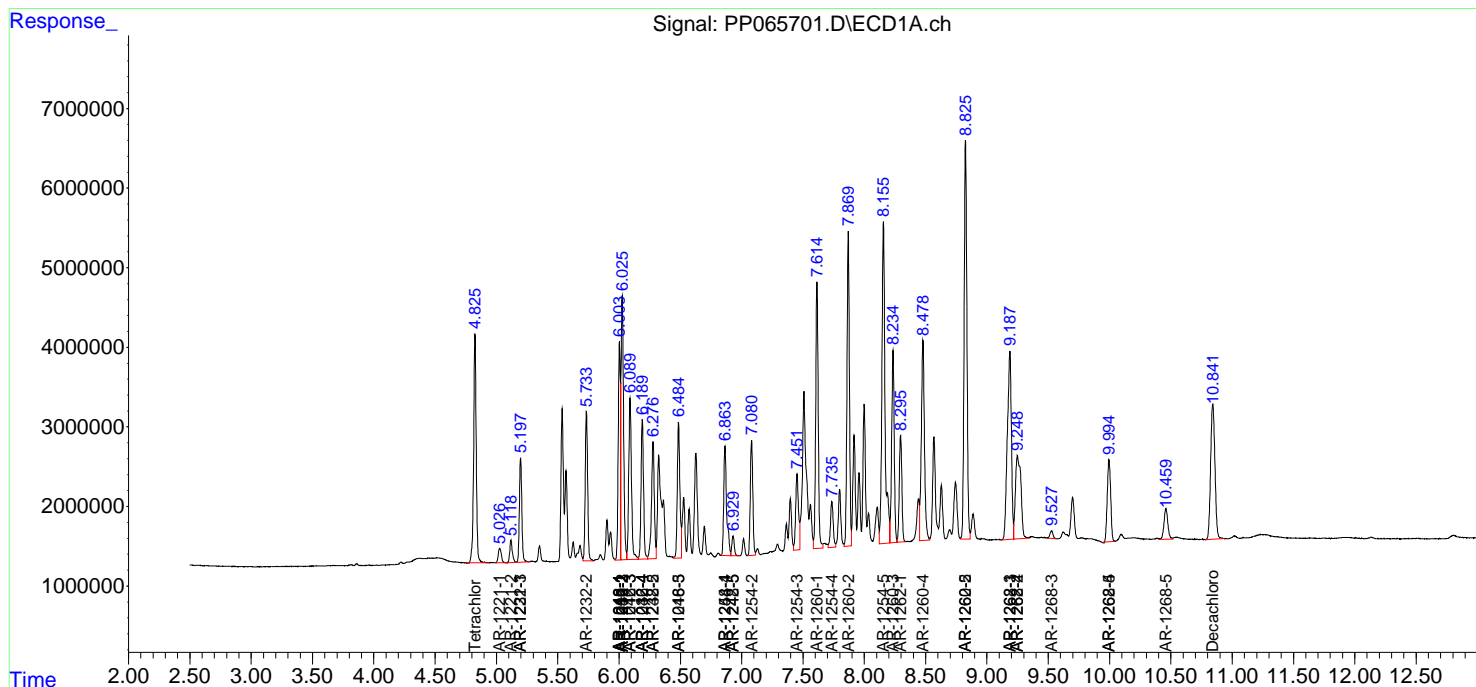
(f)=RT Delta > 1/2 Window (#)=Amounts differ by > 25% (m)=manual int.

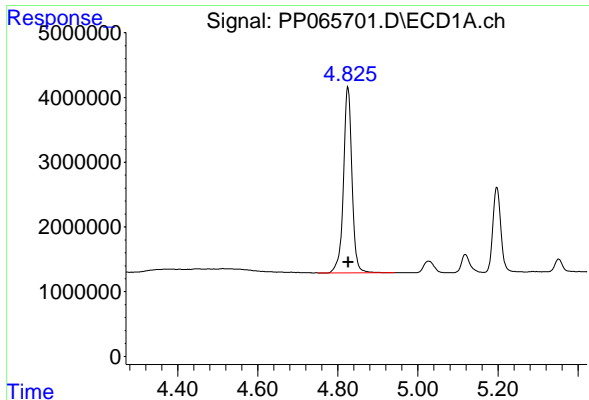
Data Path : Z:\pestpcbsrv\HPCHEM1\ECD\_P\Data\PP061424\  
 Data File : PP065701.D  
 Signal(s) : Signal #1: ECD1A.ch Signal #2: ECD2B.ch  
 Acq On : 14 Jun 2024 14:54  
 Operator : YP\AJ  
 Sample : P2889-01MS  
 Misc :  
 ALS Vial : 12 Sample Multiplier: 1

Instrument :  
 ECD\_P  
 ClientSampleId :  
 WCS-TPJMS

Integration File signal 1: autoint1.e  
 Integration File signal 2: autoint2.e  
 Quant Time: Jun 14 23:11:07 2024  
 Quant Method : Z:\pestpcbsrv\HPCHEM1\ECD\_P\methods\PP060524.M  
 Quant Title : GC EXTRACTABLES  
 QLast Update : Thu Jun 06 05:25:59 2024  
 Response via : Initial Calibration  
 Integrator: ChemStation

Volume Inj. : 2 µl  
 Signal #1 Phase : ZB-MR1 Signal #2 Phase: ZB-MR2  
 Signal #1 Info : 30Mx0.32mmx 0.50µm Signal #2 Info : 30M x 0.32mm x 0.25µm

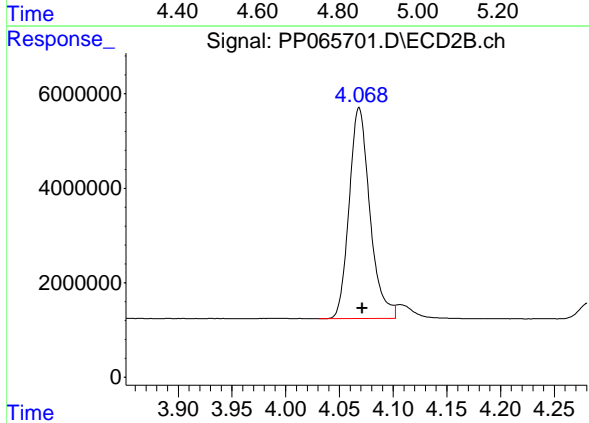




#1 Tetrachloro-m-xylene

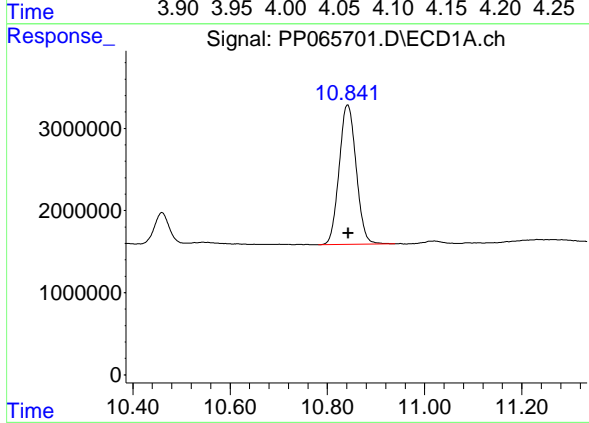
R.T.: 4.825 min  
 Delta R.T.: 0.000 min  
 Response: 42423019  
 Conc: 22.36 ng/ml

Instrument : ECD\_P  
 ClientSampleId : WCS-TPJMS



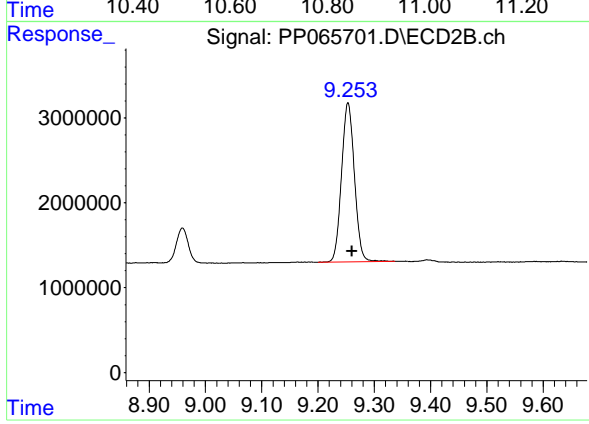
#1 Tetrachloro-m-xylene

R.T.: 4.068 min  
 Delta R.T.: -0.003 min  
 Response: 60135683  
 Conc: 21.54 ng/ml



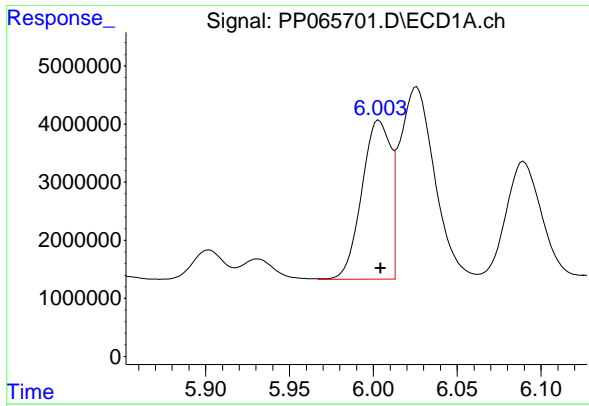
#2 Decachlorobiphenyl

R.T.: 10.842 min  
 Delta R.T.: 0.000 min  
 Response: 41137123  
 Conc: 20.92 ng/ml



#2 Decachlorobiphenyl

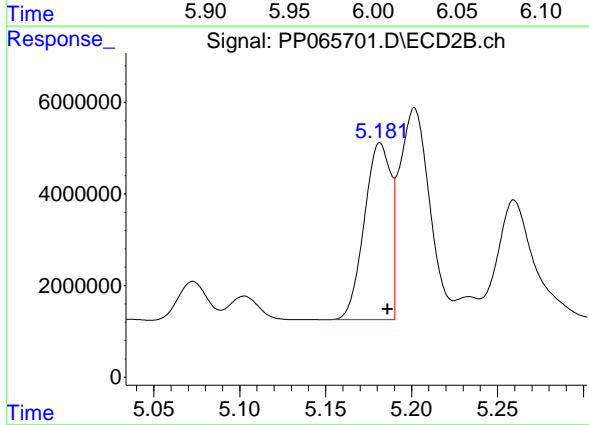
R.T.: 9.253 min  
 Delta R.T.: -0.007 min  
 Response: 29801120  
 Conc: 20.23 ng/ml



#3 AR-1016-1

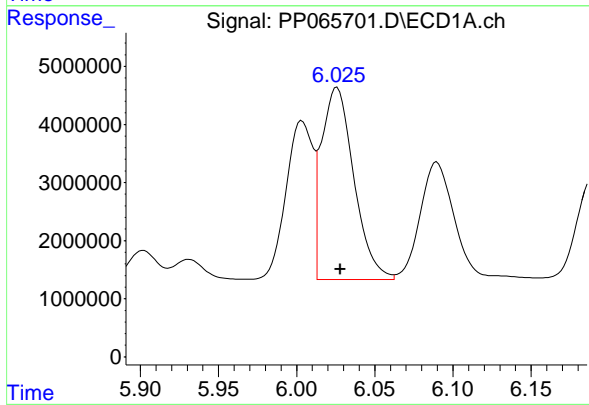
R.T.: 6.004 min  
 Delta R.T.: 0.000 min  
 Response: 32662158  
 Conc: 502.39 ng/ml

Instrument :  
 ECD\_P  
 ClientSampleId :  
 WCS-TPJMS



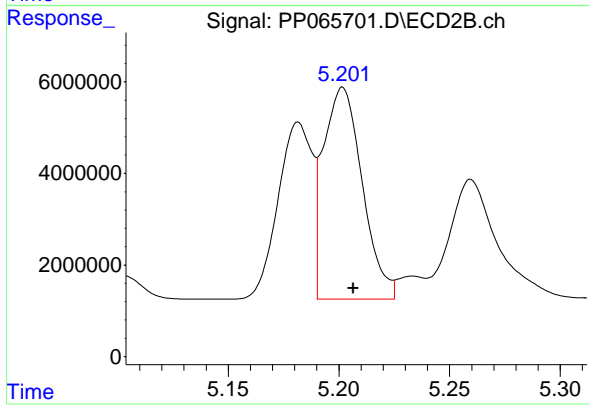
#3 AR-1016-1

R.T.: 5.182 min  
 Delta R.T.: -0.004 min  
 Response: 41550867  
 Conc: 487.21 ng/ml



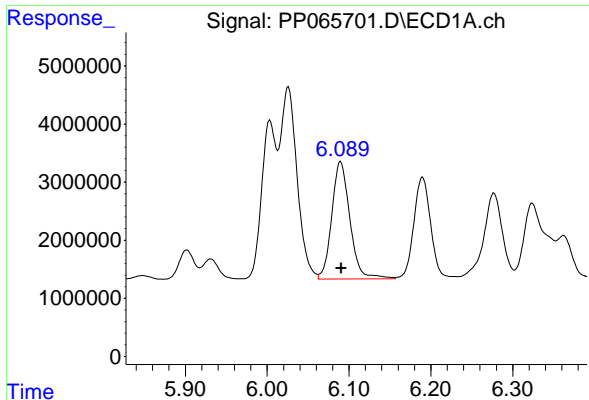
#4 AR-1016-2

R.T.: 6.026 min  
 Delta R.T.: -0.002 min  
 Response: 47861930  
 Conc: 499.74 ng/ml



#4 AR-1016-2

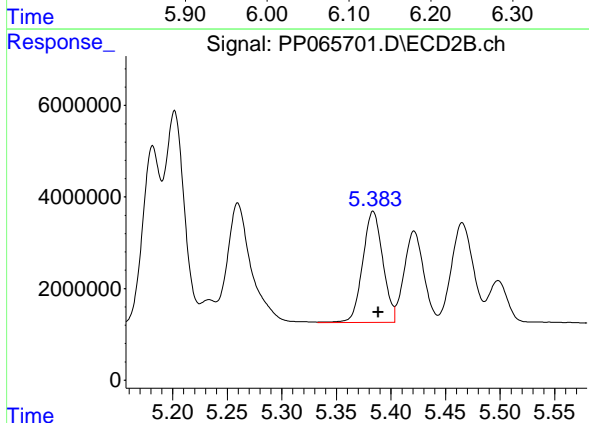
R.T.: 5.202 min  
 Delta R.T.: -0.005 min  
 Response: 56563872  
 Conc: 479.09 ng/ml



#5 AR-1016-3

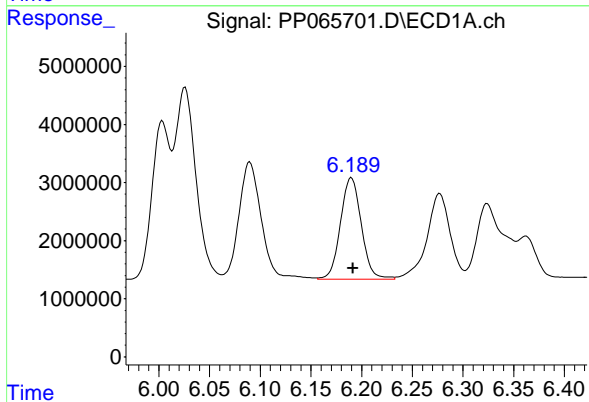
R.T.: 6.090 min  
 Delta R.T.: -0.001 min  
 Response: 31217458  
 Conc: 510.22 ng/ml

Instrument :  
 ECD\_P  
 ClientSampleId :  
 WCS-TPJMS



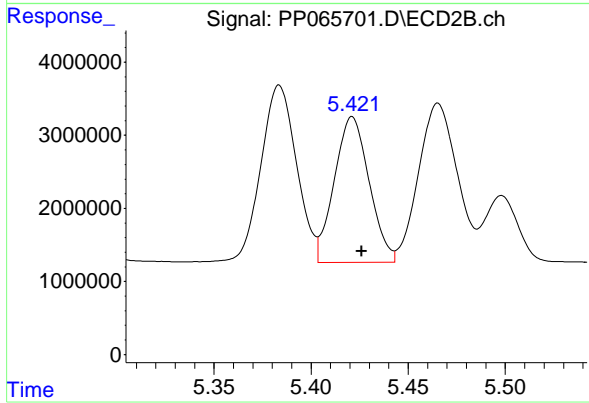
#5 AR-1016-3

R.T.: 5.384 min  
 Delta R.T.: -0.005 min  
 Response: 31159953  
 Conc: 485.54 ng/ml



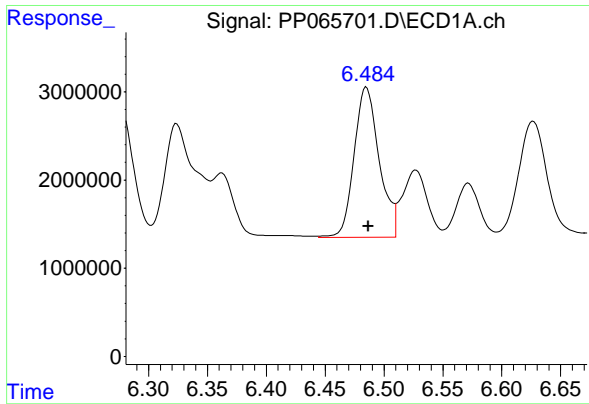
#6 AR-1016-4

R.T.: 6.190 min  
 Delta R.T.: -0.002 min  
 Response: 25061765  
 Conc: 509.61 ng/ml



#6 AR-1016-4

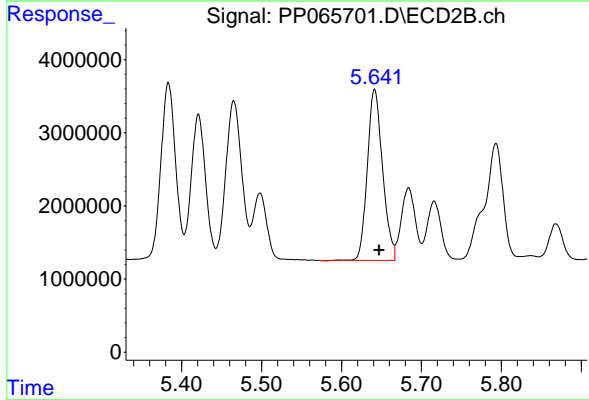
R.T.: 5.421 min  
 Delta R.T.: -0.005 min  
 Response: 24896267  
 Conc: 482.45 ng/ml



#7 AR-1016-5

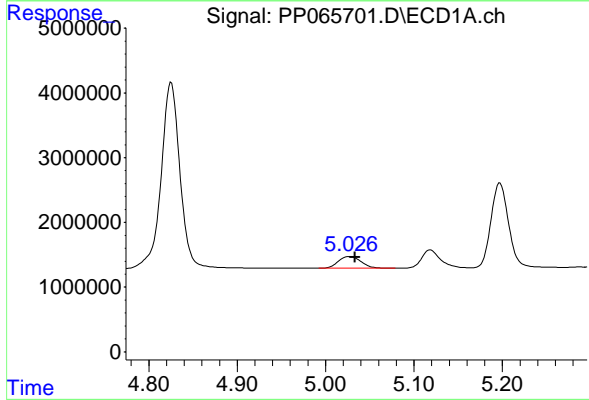
R.T.: 6.485 min  
 Delta R.T.: -0.002 min  
 Response: 25210296  
 Conc: 502.95 ng/ml

Instrument :  
 ECD\_P  
 ClientSampleId :  
 WCS-TPJMS



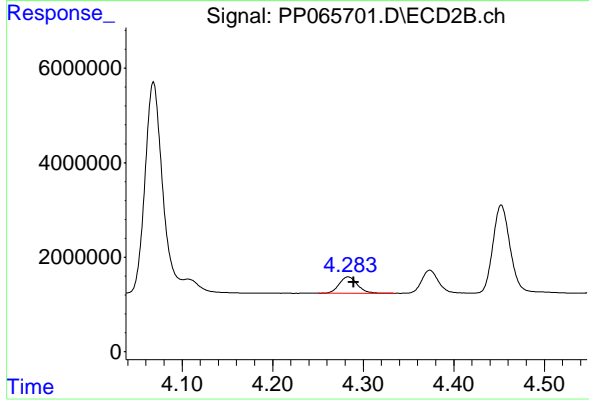
#7 AR-1016-5

R.T.: 5.641 min  
 Delta R.T.: -0.006 min  
 Response: 31027874  
 Conc: 470.37 ng/ml



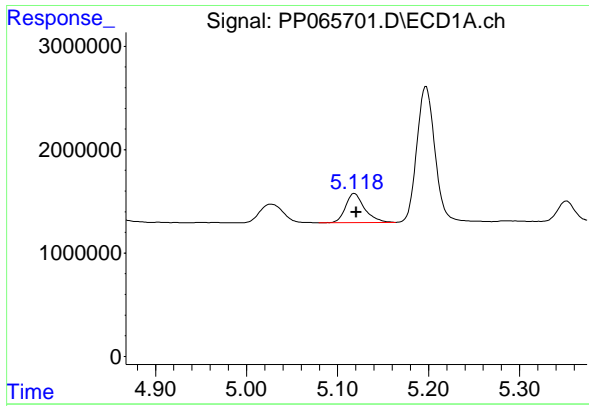
#8 AR-1221-1

R.T.: 5.027 min  
 Delta R.T.: -0.006 min  
 Response: 3243639  
 Conc: 127.10 ng/ml



#8 AR-1221-1

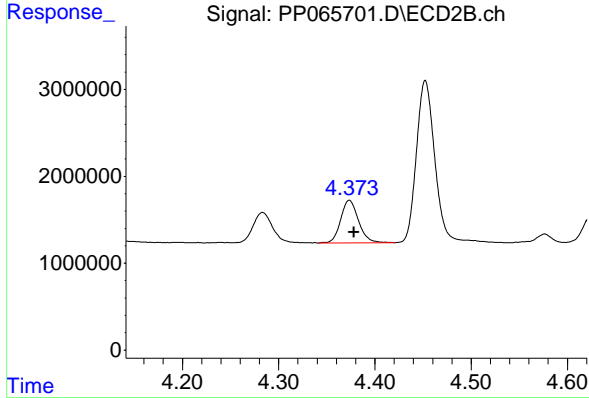
R.T.: 4.283 min  
 Delta R.T.: -0.006 min  
 Response: 4859464  
 Conc: 139.66 ng/ml



#9 AR-1221-2

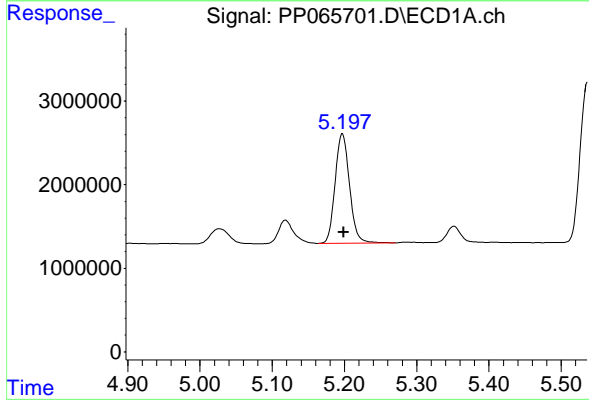
R.T.: 5.119 min  
 Delta R.T.: -0.002 min  
 Response: 4110598  
 Conc: 212.85 ng/ml

Instrument :  
 ECD\_P  
 ClientSampleId :  
 WCS-TPJMS



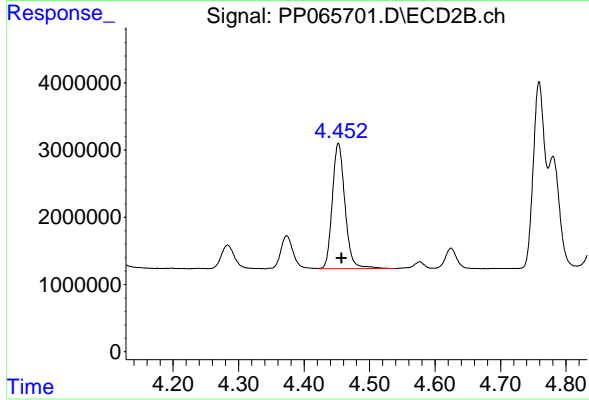
#9 AR-1221-2

R.T.: 4.373 min  
 Delta R.T.: -0.005 min  
 Response: 6363406  
 Conc: 235.73 ng/ml



#10 AR-1221-3

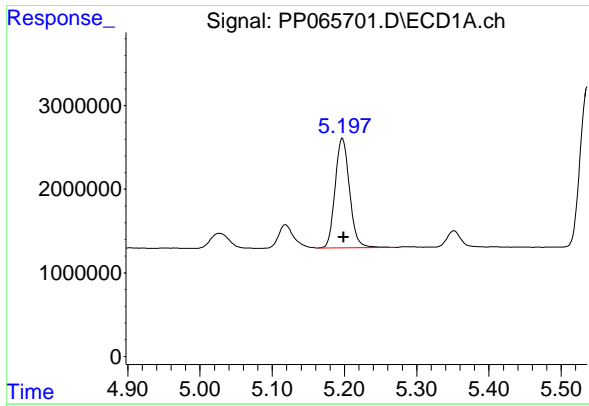
R.T.: 5.197 min  
 Delta R.T.: -0.002 min  
 Response: 18146154  
 Conc: 322.92 ng/ml



#10 AR-1221-3

R.T.: 4.452 min  
 Delta R.T.: -0.005 min  
 Response: 25051882  
 Conc: 323.03 ng/ml

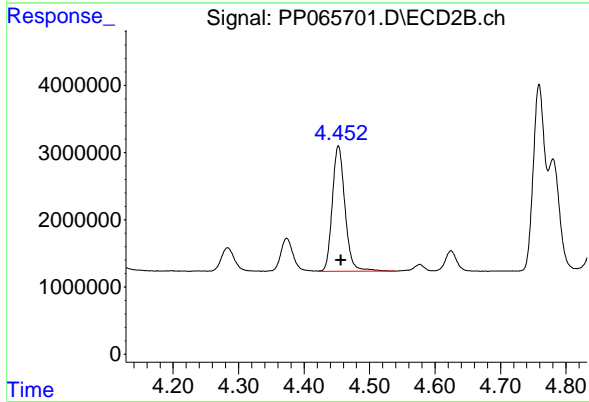




#11 AR-1232-1

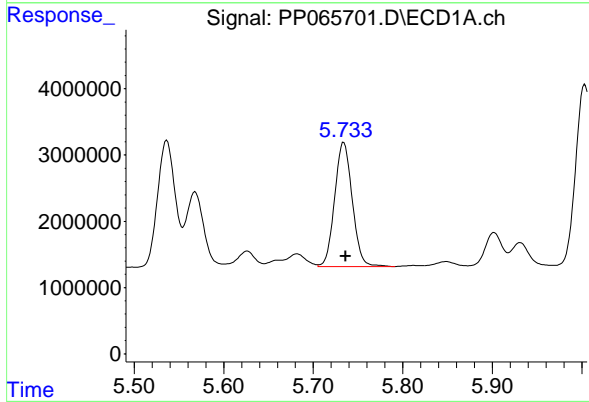
R.T.: 5.197 min  
 Delta R.T.: -0.002 min  
 Response: 18146154  
 Conc: 401.06 ng/ml

Instrument :  
 ECD\_P  
 ClientSampleId :  
 WCS-TPJMS



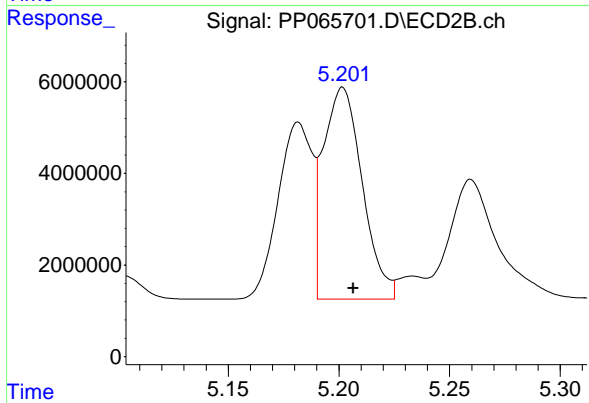
#11 AR-1232-1

R.T.: 4.452 min  
 Delta R.T.: -0.004 min  
 Response: 25051882  
 Conc: 396.32 ng/ml



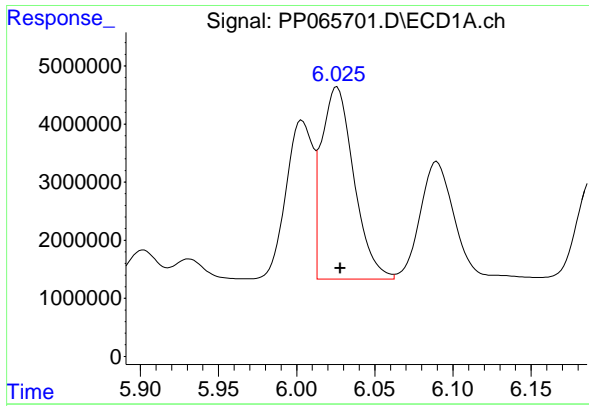
#12 AR-1232-2

R.T.: 5.734 min  
 Delta R.T.: -0.002 min  
 Response: 25624645  
 Conc: 983.89 ng/ml



#12 AR-1232-2

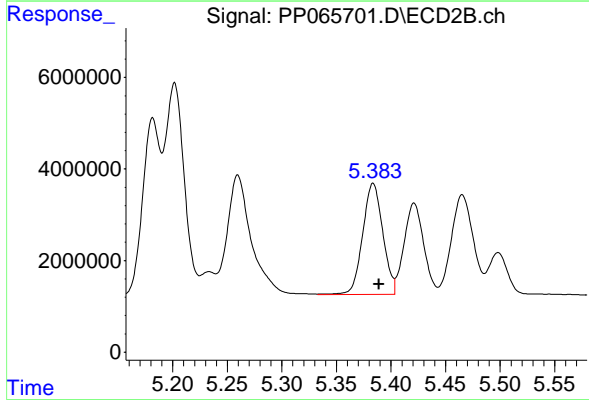
R.T.: 5.202 min  
 Delta R.T.: -0.005 min  
 Response: 56563872  
 Conc: 1013.85 ng/ml



#13 AR-1232-3

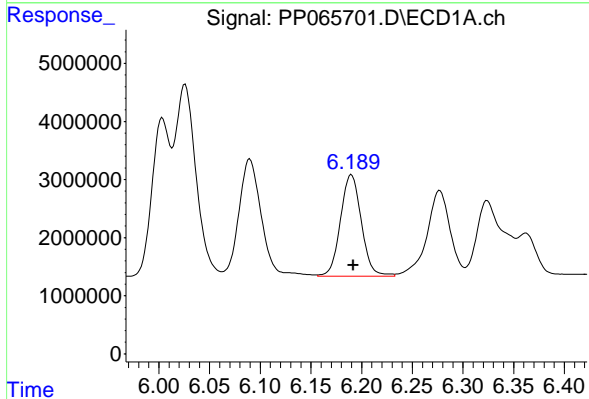
R.T.: 6.026 min  
 Delta R.T.: -0.002 min  
 Response: 47861930  
 Conc: 1058.02 ng/ml

Instrument :  
 ECD\_P  
 ClientSampleId :  
 WCS-TPJMS



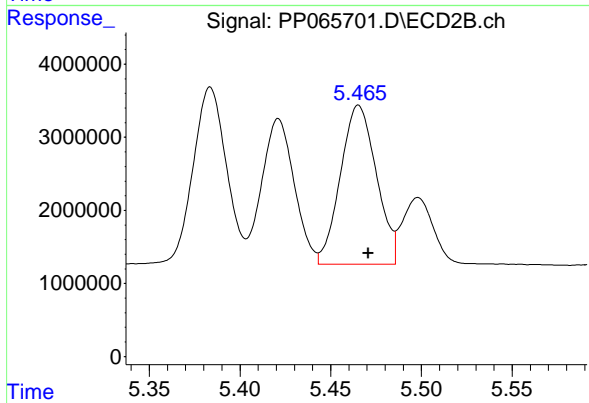
#13 AR-1232-3

R.T.: 5.384 min  
 Delta R.T.: -0.005 min  
 Response: 31159953  
 Conc: 1034.61 ng/ml



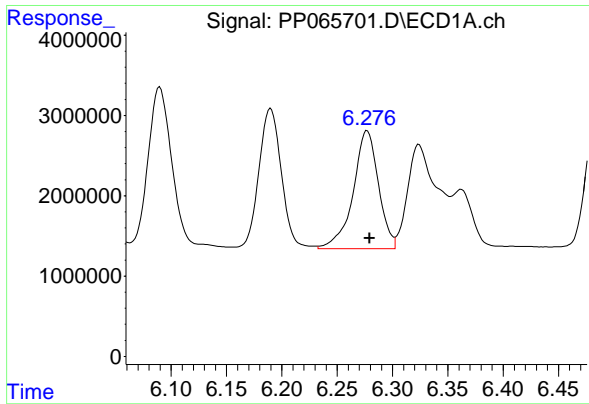
#14 AR-1232-4

R.T.: 6.190 min  
 Delta R.T.: -0.002 min  
 Response: 25061765  
 Conc: 1072.94 ng/ml



#14 AR-1232-4

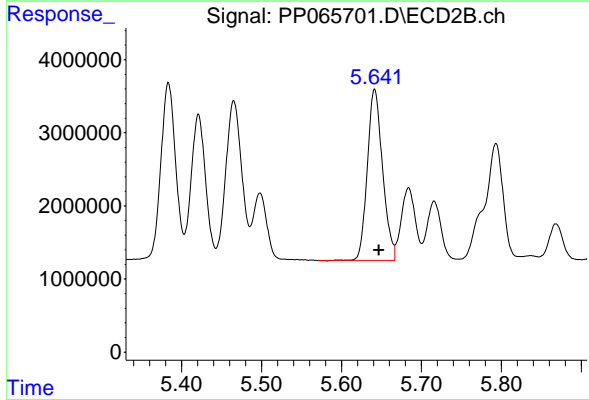
R.T.: 5.465 min  
 Delta R.T.: -0.005 min  
 Response: 30010538  
 Conc: 1096.87 ng/ml



#15 AR-1232-5

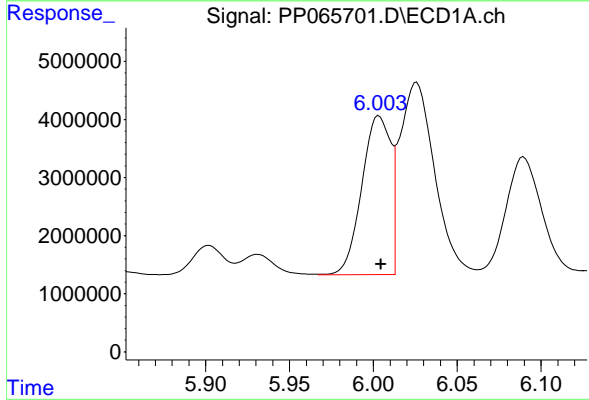
R.T.: 6.277 min  
 Delta R.T.: -0.002 min  
 Response: 23419185  
 Conc: 1192.90 ng/ml

Instrument :  
 ECD\_P  
 ClientSampleId :  
 WCS-TPJMS



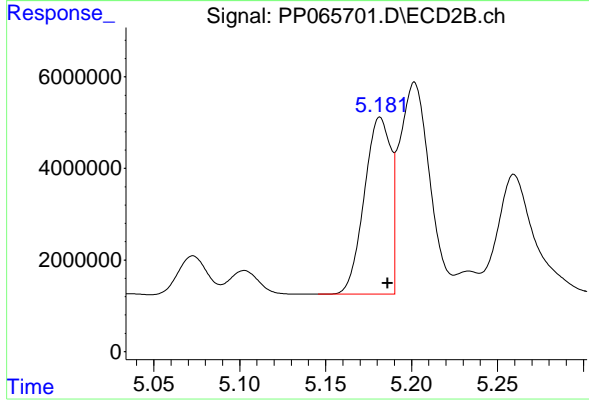
#15 AR-1232-5

R.T.: 5.641 min  
 Delta R.T.: -0.005 min  
 Response: 31027874  
 Conc: 1061.16 ng/ml



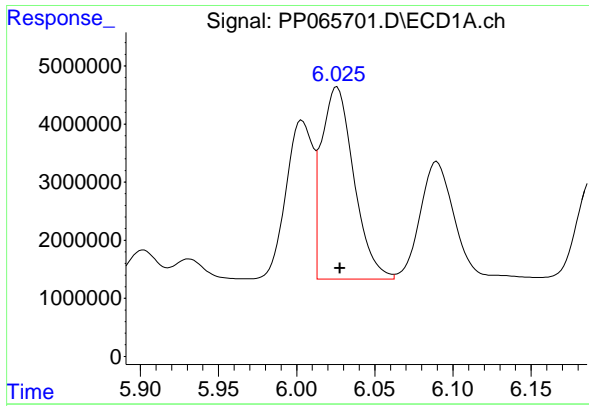
#16 AR-1242-1

R.T.: 6.004 min  
 Delta R.T.: 0.000 min  
 Response: 32662158  
 Conc: 597.30 ng/ml



#16 AR-1242-1

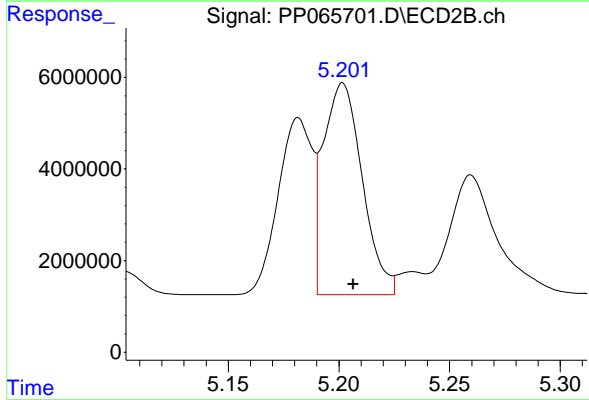
R.T.: 5.182 min  
 Delta R.T.: -0.004 min  
 Response: 41550867  
 Conc: 578.22 ng/ml



#17 AR-1242-2

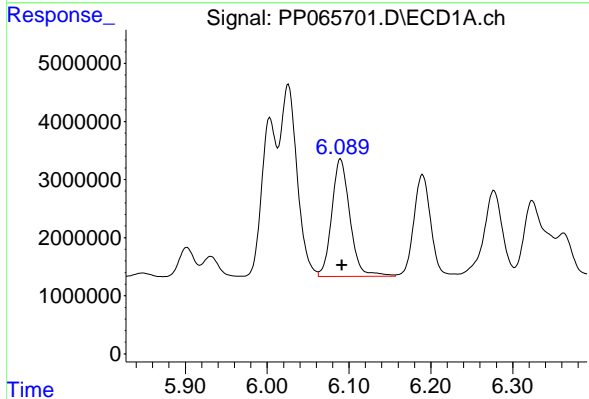
R.T.: 6.026 min  
 Delta R.T.: -0.002 min  
 Response: 47861930  
 Conc: 603.55 ng/ml

Instrument :  
 ECD\_P  
 ClientSampleId :  
 WCS-TPJMS



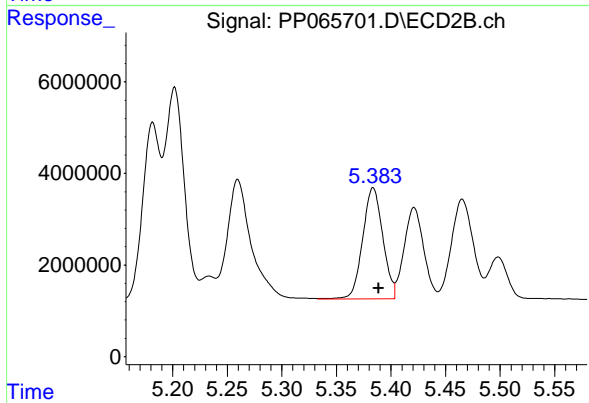
#17 AR-1242-2

R.T.: 5.202 min  
 Delta R.T.: -0.005 min  
 Response: 56563872  
 Conc: 568.79 ng/ml



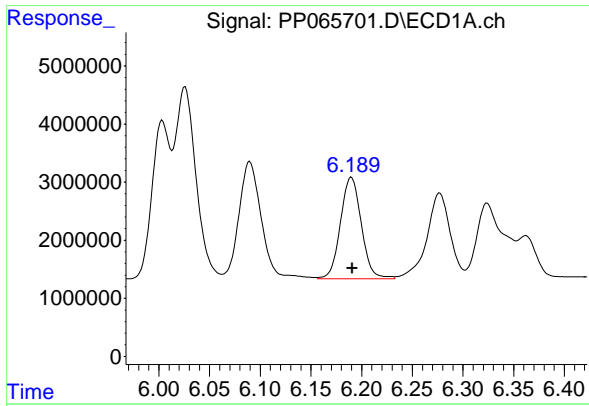
#18 AR-1242-3

R.T.: 6.090 min  
 Delta R.T.: -0.002 min  
 Response: 31217458  
 Conc: 617.58 ng/ml



#18 AR-1242-3

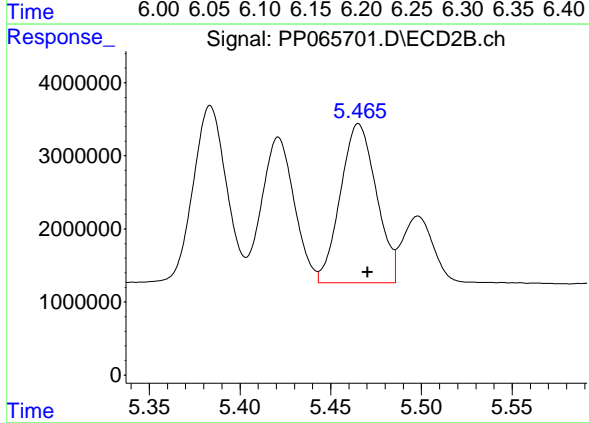
R.T.: 5.384 min  
 Delta R.T.: -0.005 min  
 Response: 31159953  
 Conc: 579.30 ng/ml



#19 AR-1242-4

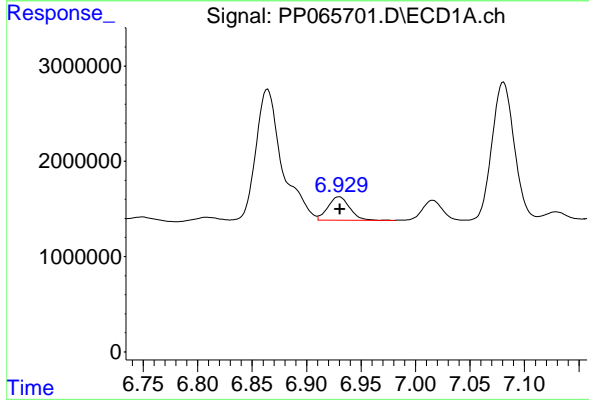
R.T.: 6.190 min  
 Delta R.T.: -0.001 min  
 Response: 25061765  
 Conc: 610.73 ng/ml

Instrument :  
 ECD\_P  
 ClientSampleId :  
 WCS-TPJMS



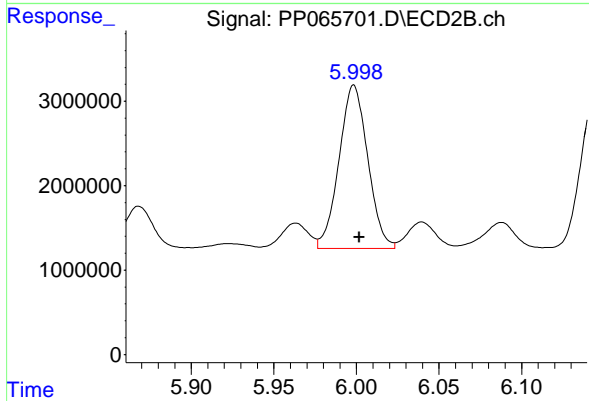
#19 AR-1242-4

R.T.: 5.465 min  
 Delta R.T.: -0.005 min  
 Response: 30010538  
 Conc: 563.47 ng/ml



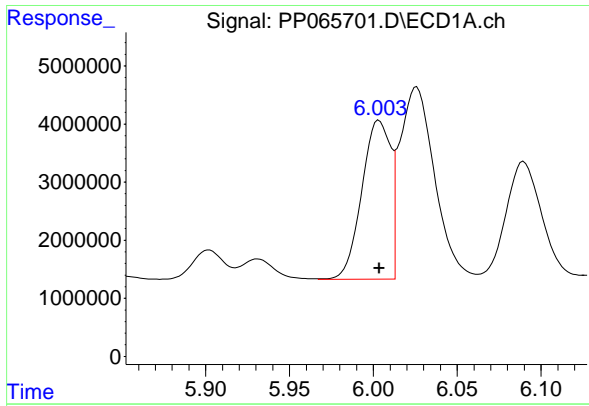
#20 AR-1242-5

R.T.: 6.930 min  
 Delta R.T.: 0.000 min  
 Response: 3420875  
 Conc: 78.42 ng/ml



#20 AR-1242-5

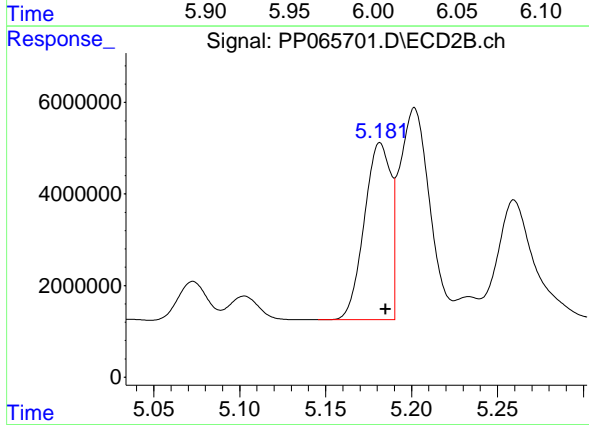
R.T.: 5.998 min  
 Delta R.T.: -0.003 min  
 Response: 23424432  
 Conc: 394.23 ng/ml



#21 AR-1248-1

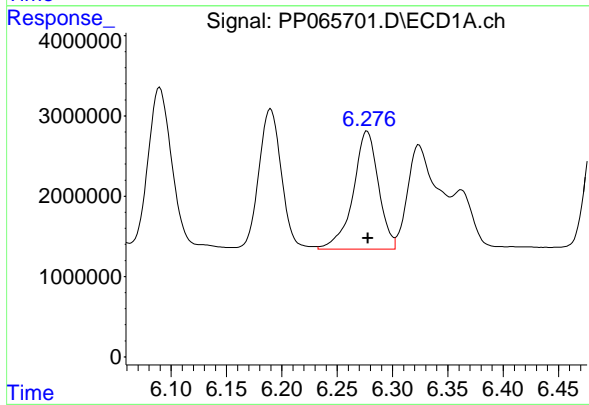
R.T.: 6.004 min  
 Delta R.T.: 0.000 min  
 Response: 32662158  
 Conc: 803.12 ng/ml

Instrument :  
 ECD\_P  
 ClientSampleId :  
 WCS-TPJMS



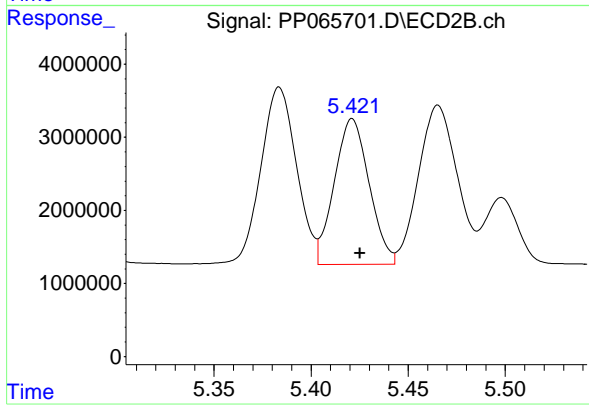
#21 AR-1248-1

R.T.: 5.182 min  
 Delta R.T.: -0.003 min  
 Response: 41550867  
 Conc: 778.48 ng/ml



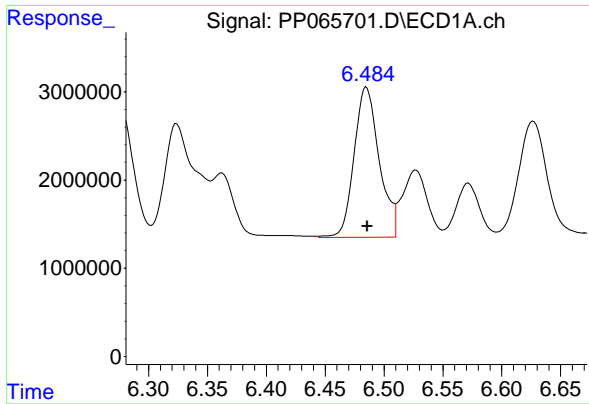
#22 AR-1248-2

R.T.: 6.277 min  
 Delta R.T.: 0.000 min  
 Response: 23419185  
 Conc: 375.77 ng/ml



#22 AR-1248-2

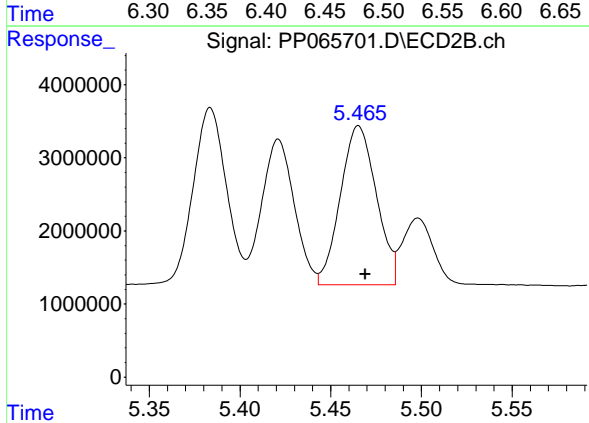
R.T.: 5.421 min  
 Delta R.T.: -0.004 min  
 Response: 24896267  
 Conc: 338.24 ng/ml



#23 AR-1248-3

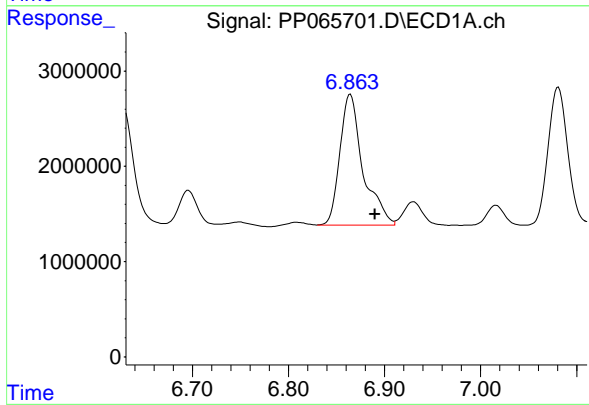
R.T.: 6.485 min  
 Delta R.T.: 0.000 min  
 Response: 25210296  
 Conc: 374.37 ng/ml

Instrument :  
 ECD\_P  
 ClientSampleId :  
 WCS-TPJMS



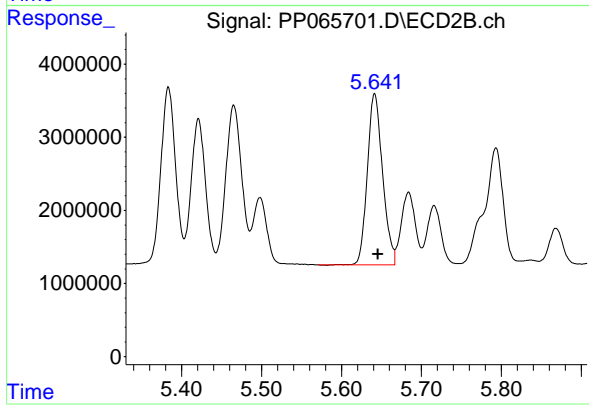
#23 AR-1248-3

R.T.: 5.465 min  
 Delta R.T.: -0.004 min  
 Response: 30010538  
 Conc: 392.72 ng/ml



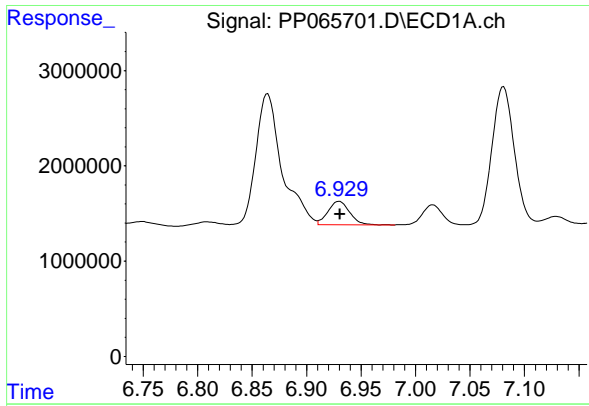
#24 AR-1248-4

R.T.: 6.864 min  
 Delta R.T.: -0.026 min  
 Response: 22794811  
 Conc: 320.17 ng/ml



#24 AR-1248-4

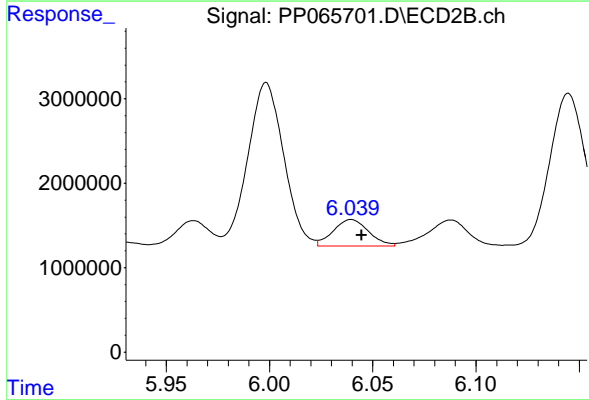
R.T.: 5.641 min  
 Delta R.T.: -0.004 min  
 Response: 31027874  
 Conc: 352.93 ng/ml



#25 AR-1248-5

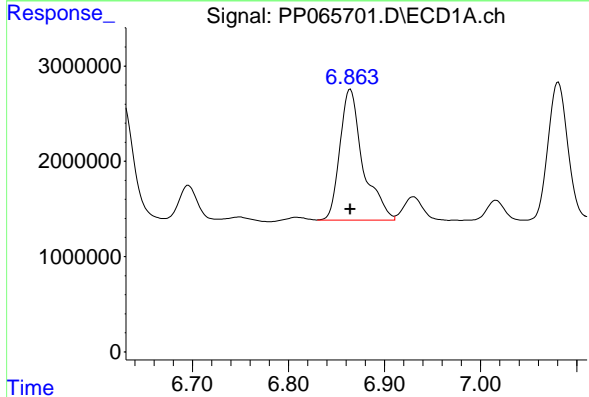
R.T.: 6.930 min  
 Delta R.T.: 0.000 min  
 Response: 3420875  
 Conc: 49.35 ng/ml

Instrument :  
 ECD\_P  
 ClientSampleId :  
 WCS-TPJMS



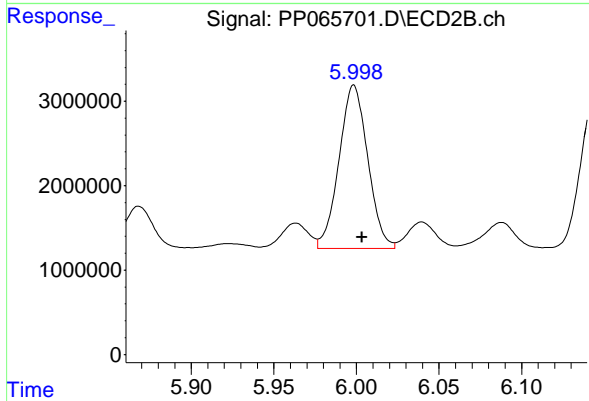
#25 AR-1248-5

R.T.: 6.040 min  
 Delta R.T.: -0.005 min  
 Response: 3724449  
 Conc: 46.69 ng/ml



#26 AR-1254-1

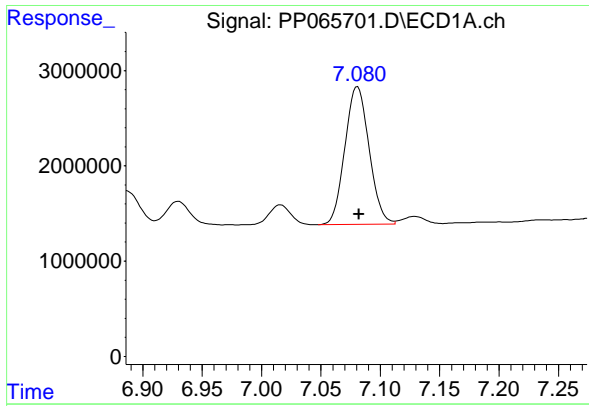
R.T.: 6.864 min  
 Delta R.T.: 0.000 min  
 Response: 22794811  
 Conc: 290.98 ng/ml



#26 AR-1254-1

R.T.: 5.998 min  
 Delta R.T.: -0.005 min  
 Response: 23424432  
 Conc: 190.11 ng/ml

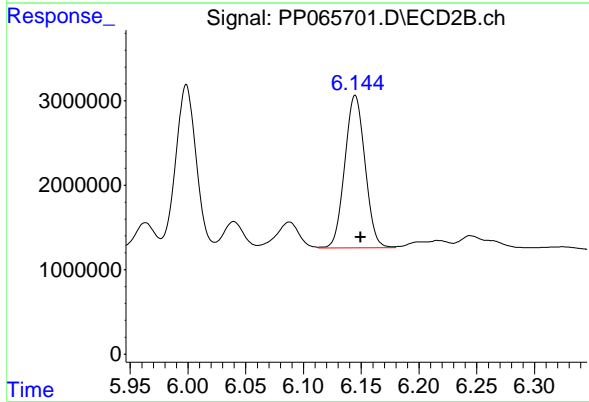




#27 AR-1254-2

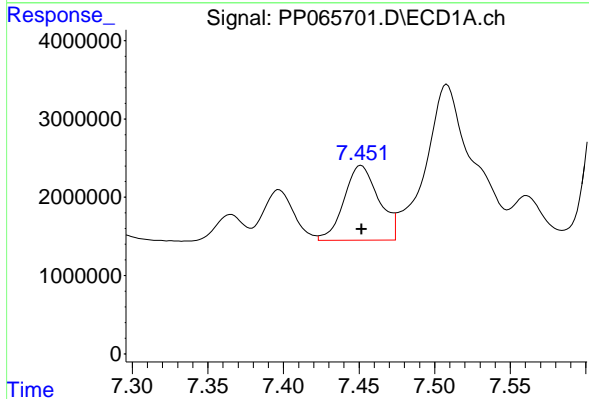
R.T.: 7.081 min  
 Delta R.T.: -0.001 min  
 Response: 20529141  
 Conc: 173.78 ng/ml

Instrument :  
 ECD\_P  
 ClientSampleId :  
 WCS-TPJMS



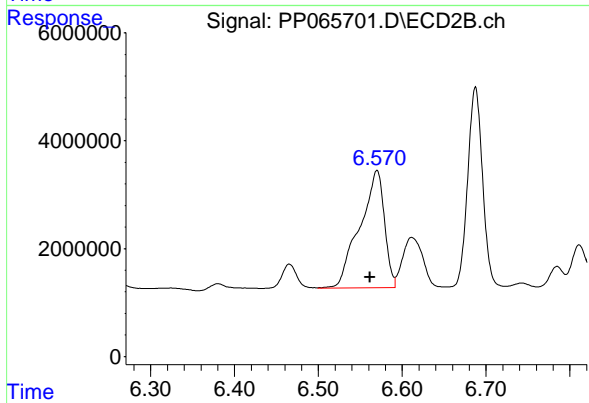
#27 AR-1254-2

R.T.: 6.145 min  
 Delta R.T.: -0.005 min  
 Response: 22096881  
 Conc: 209.86 ng/ml



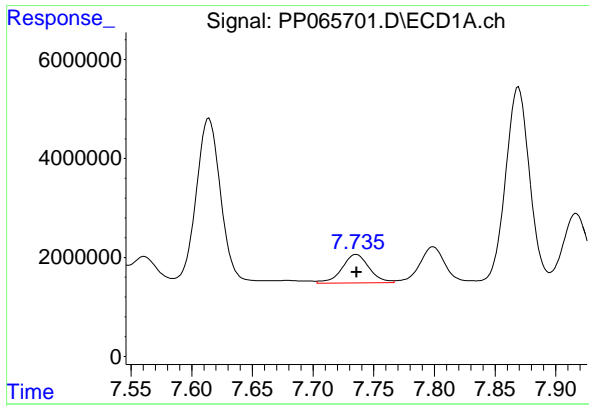
#28 AR-1254-3

R.T.: 7.451 min  
 Delta R.T.: 0.000 min  
 Response: 15247435  
 Conc: 124.95 ng/ml



#28 AR-1254-3

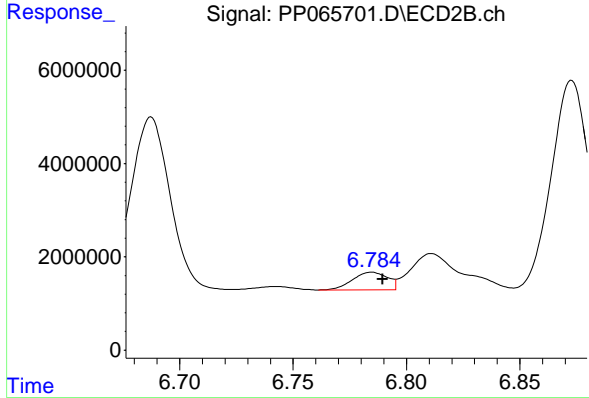
R.T.: 6.570 min  
 Delta R.T.: 0.008 min  
 Response: 44461969  
 Conc: 280.97 ng/ml



#29 AR-1254-4

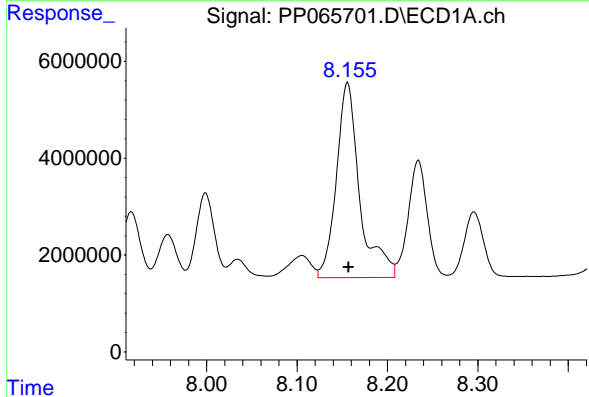
R.T.: 7.736 min  
 Delta R.T.: 0.000 min  
 Response: 9015384  
 Conc: 101.38 ng/ml

Instrument :  
 ECD\_P  
 ClientSampleId :  
 WCS-TPJMS



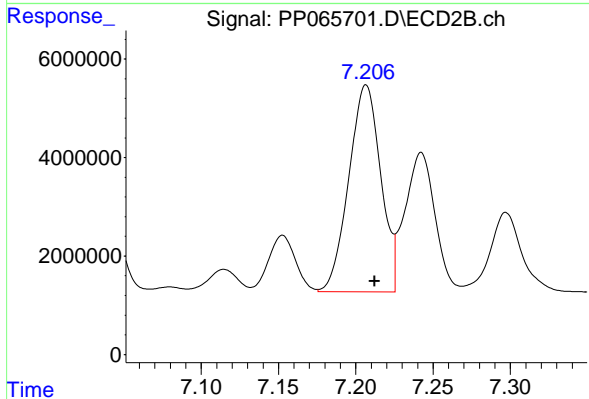
#29 AR-1254-4

R.T.: 6.785 min  
 Delta R.T.: -0.005 min  
 Response: 4084777  
 Conc: 44.24 ng/ml



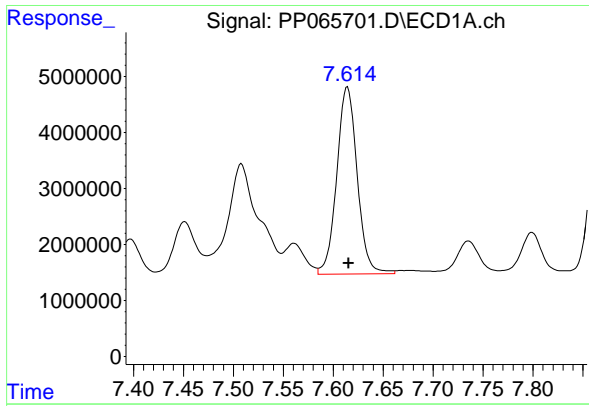
#30 AR-1254-5

R.T.: 8.156 min  
 Delta R.T.: 0.000 min  
 Response: 72117253  
 Conc: 736.20 ng/ml



#30 AR-1254-5

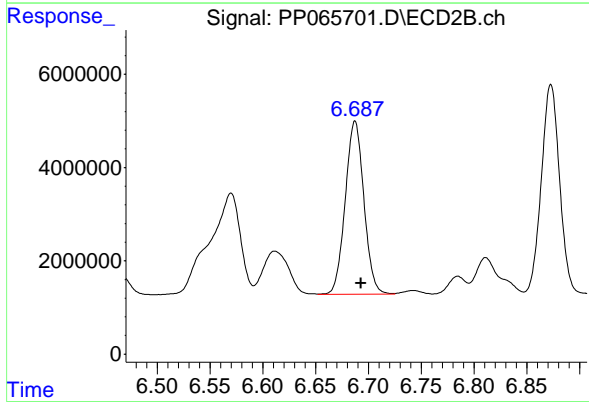
R.T.: 7.207 min  
 Delta R.T.: -0.006 min  
 Response: 60462197  
 Conc: 472.40 ng/ml



#31 AR-1260-1

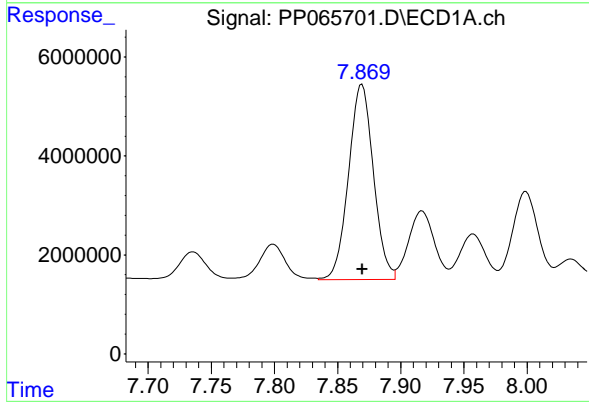
R.T.: 7.614 min  
 Delta R.T.: -0.001 min  
 Response: 47657781  
 Conc: 492.05 ng/ml

Instrument :  
 ECD\_P  
 ClientSampleId :  
 WCS-TPJMS



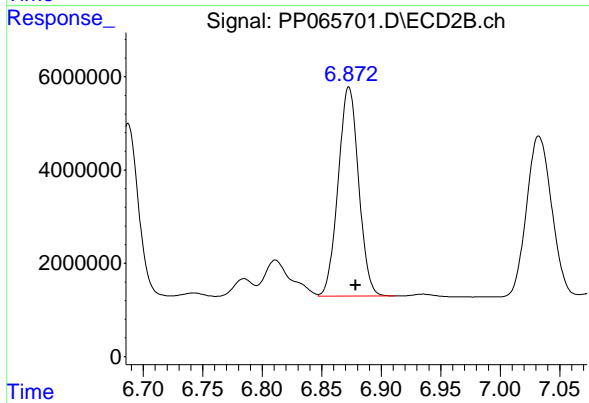
#31 AR-1260-1

R.T.: 6.687 min  
 Delta R.T.: -0.006 min  
 Response: 45668262  
 Conc: 430.35 ng/ml



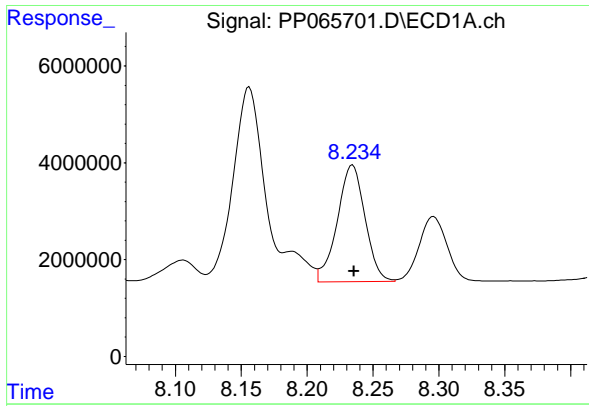
#32 AR-1260-2

R.T.: 7.869 min  
 Delta R.T.: 0.000 min  
 Response: 54143009  
 Conc: 482.90 ng/ml



#32 AR-1260-2

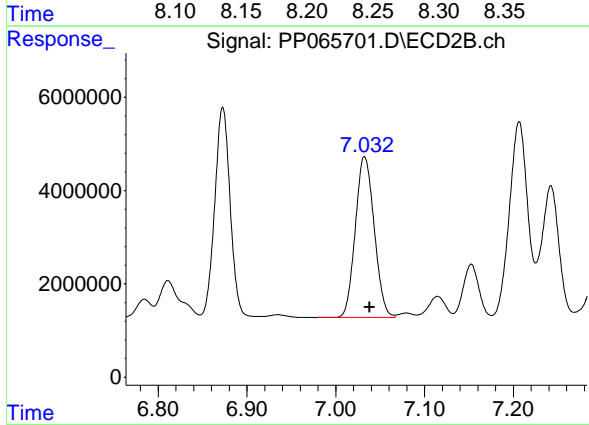
R.T.: 6.873 min  
 Delta R.T.: -0.006 min  
 Response: 53697141  
 Conc: 435.41 ng/ml



#33 AR-1260-3

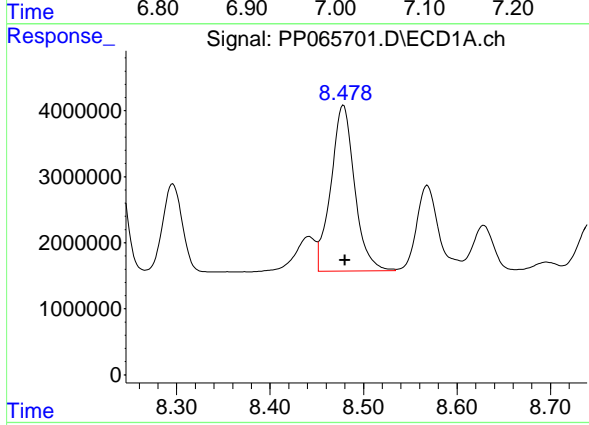
R.T.: 8.234 min  
 Delta R.T.: -0.001 min  
 Response: 35267619  
 Conc: 403.95 ng/ml

Instrument :  
 ECD\_P  
 ClientSampleId :  
 WCS-TPJMS



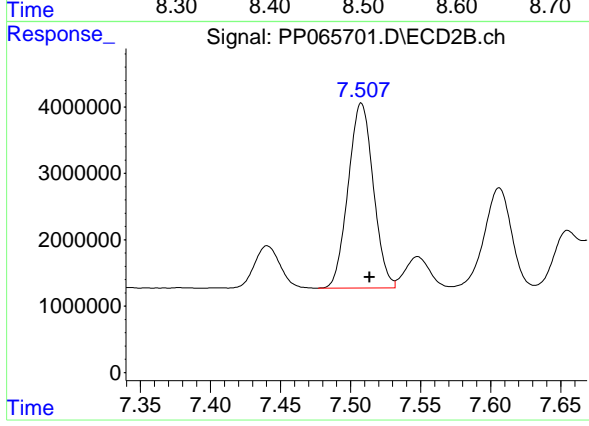
#33 AR-1260-3

R.T.: 7.032 min  
 Delta R.T.: -0.006 min  
 Response: 50902299  
 Conc: 438.91 ng/ml



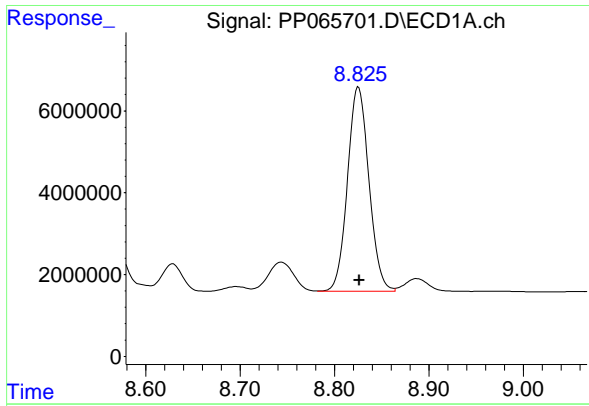
#34 AR-1260-4

R.T.: 8.478 min  
 Delta R.T.: -0.002 min  
 Response: 44246371  
 Conc: 441.53 ng/ml



#34 AR-1260-4

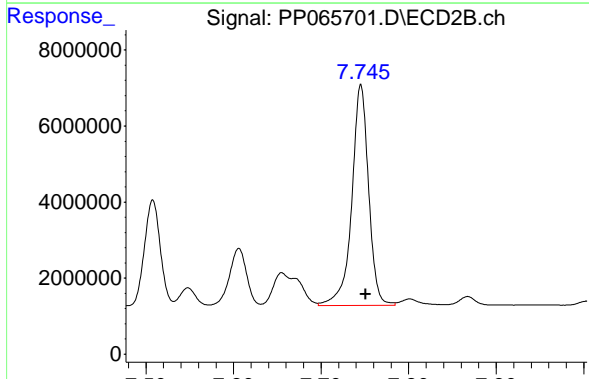
R.T.: 7.507 min  
 Delta R.T.: -0.006 min  
 Response: 34825468  
 Conc: 395.40 ng/ml



#35 AR-1260-5

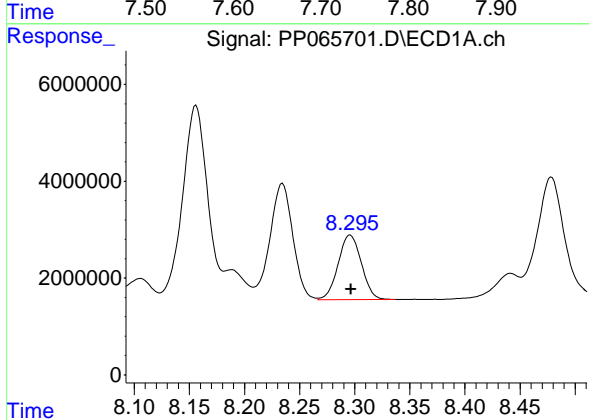
R.T.: 8.825 min  
 Delta R.T.: -0.001 min  
 Response: 78853152  
 Conc: 418.13 ng/ml

Instrument :  
 ECD\_P  
 ClientSampleId :  
 WCS-TPJMS



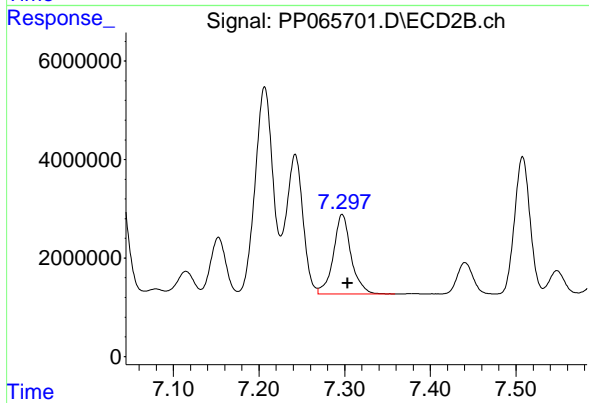
#35 AR-1260-5

R.T.: 7.745 min  
 Delta R.T.: -0.005 min  
 Response: 77490830  
 Conc: 404.84 ng/ml



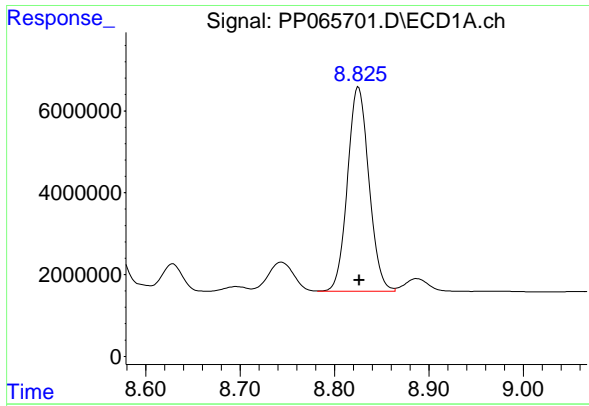
#36 AR-1262-1

R.T.: 8.296 min  
 Delta R.T.: 0.000 min  
 Response: 19668846  
 Conc: 367.10 ng/ml



#36 AR-1262-1

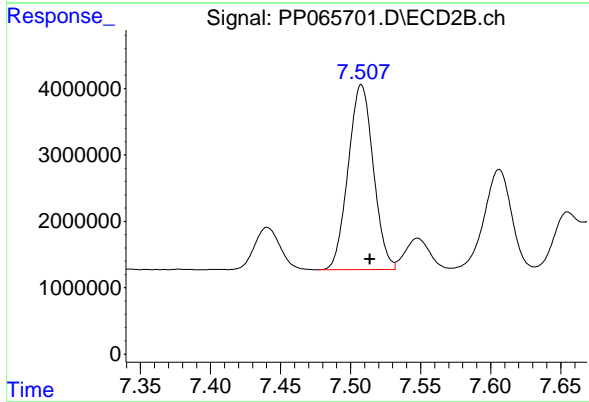
R.T.: 7.297 min  
 Delta R.T.: -0.006 min  
 Response: 23136445  
 Conc: 415.99 ng/ml



#37 AR-1262-2

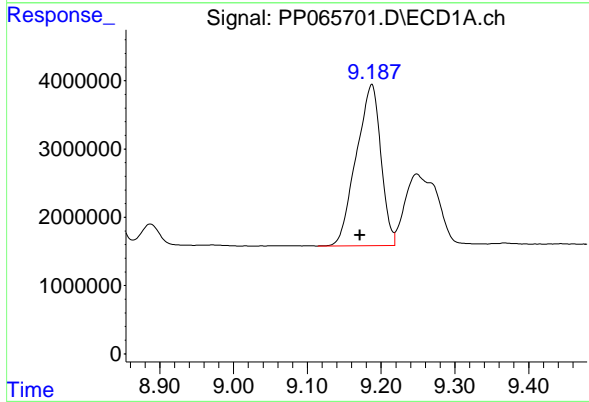
R.T.: 8.825 min  
 Delta R.T.: -0.001 min  
 Response: 78853152  
 Conc: 371.72 ng/ml

Instrument :  
 ECD\_P  
 ClientSampleId :  
 WCS-TPJMS



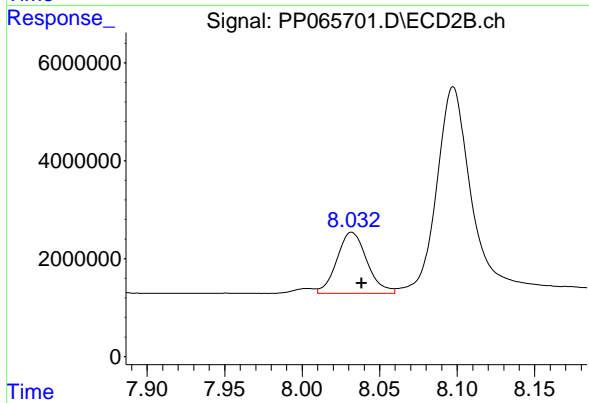
#37 AR-1262-2

R.T.: 7.508 min  
 Delta R.T.: -0.006 min  
 Response: 34825468  
 Conc: 312.54 ng/ml



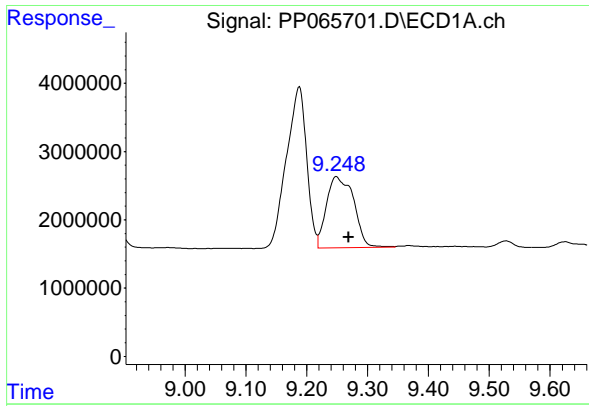
#38 AR-1262-3

R.T.: 9.187 min  
 Delta R.T.: 0.016 min  
 Response: 54589922  
 Conc: 356.57 ng/ml



#38 AR-1262-3

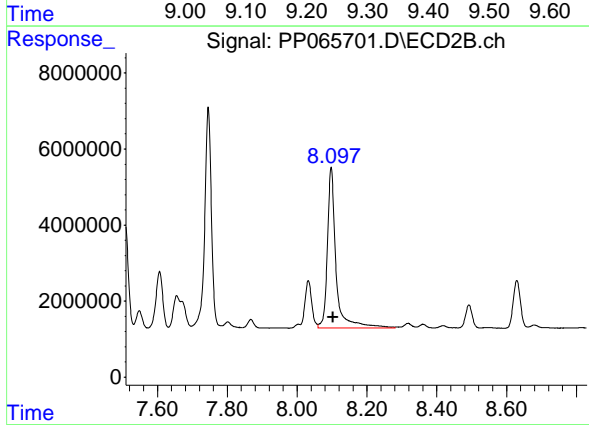
R.T.: 8.032 min  
 Delta R.T.: -0.006 min  
 Response: 16915606  
 Conc: 199.12 ng/ml



#39 AR-1262-4

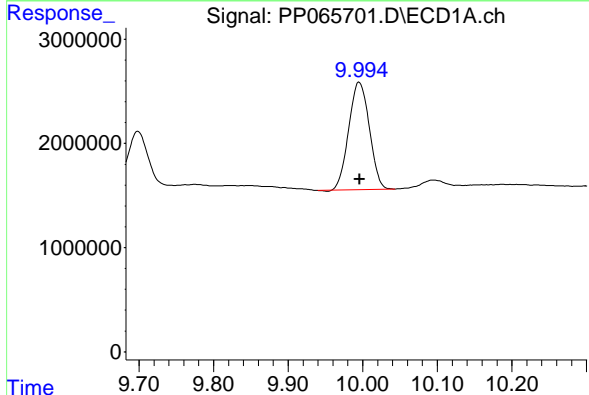
R.T.: 9.249 min  
 Delta R.T.: -0.020 min  
 Response: 32335181  
 Conc: 266.88 ng/ml

Instrument :  
 ECD\_P  
 ClientSampleId :  
 WCS-TPJMS



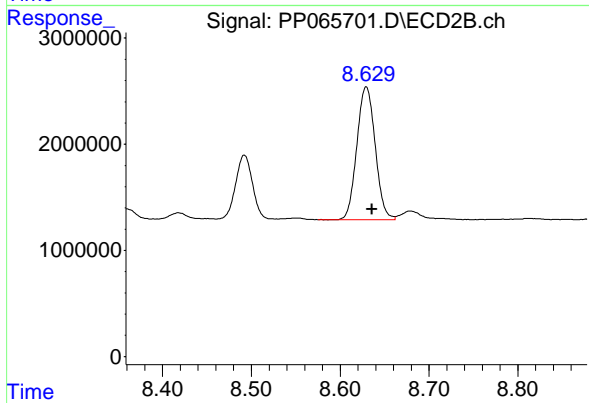
#39 AR-1262-4

R.T.: 8.098 min  
 Delta R.T.: -0.006 min  
 Response: 72947728  
 Conc: 475.18 ng/ml



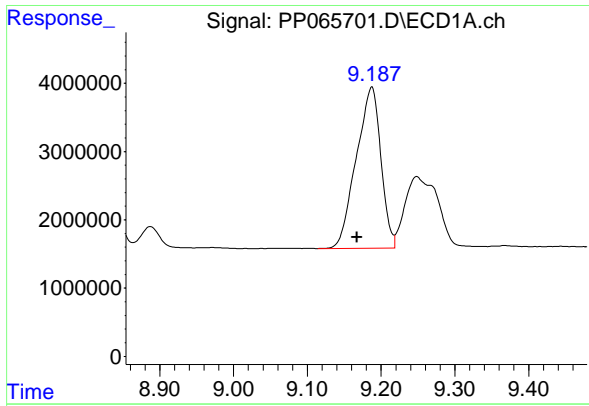
#40 AR-1262-5

R.T.: 9.995 min  
 Delta R.T.: 0.000 min  
 Response: 19794827  
 Conc: 243.73 ng/ml



#40 AR-1262-5

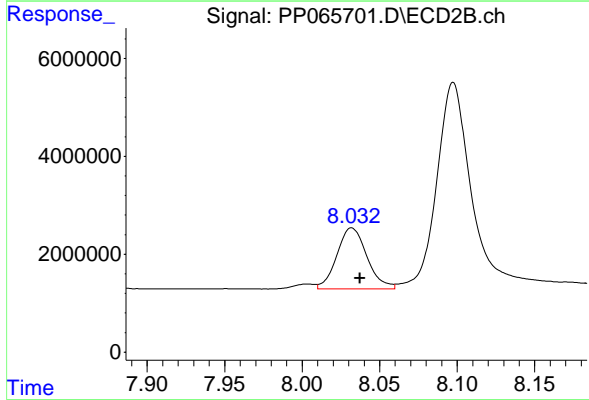
R.T.: 8.629 min  
 Delta R.T.: -0.006 min  
 Response: 17979311  
 Conc: 255.99 ng/ml



#41 AR-1268-1

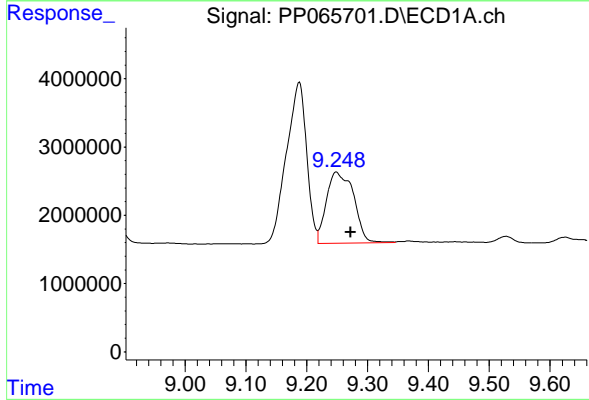
R.T.: 9.187 min  
 Delta R.T.: 0.020 min  
 Response: 54589922  
 Conc: 214.92 ng/ml

Instrument :  
 ECD\_P  
 ClientSampleId :  
 WCS-TPJMS



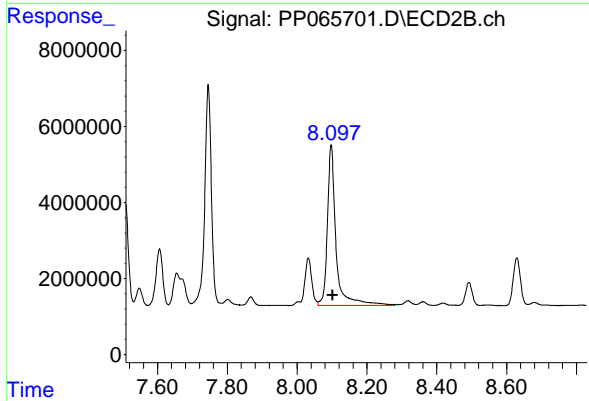
#41 AR-1268-1

R.T.: 8.032 min  
 Delta R.T.: -0.005 min  
 Response: 16915606  
 Conc: 73.10 ng/ml



#42 AR-1268-2

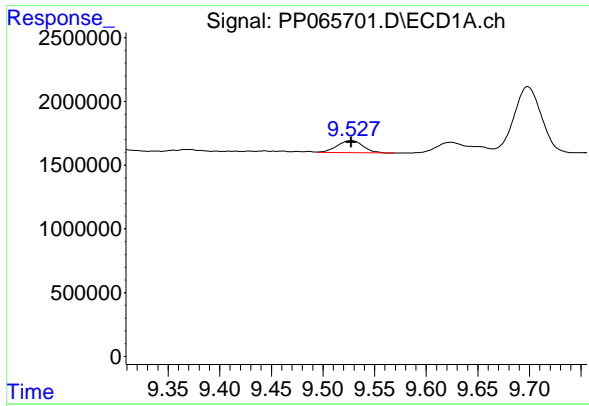
R.T.: 9.249 min  
 Delta R.T.: -0.023 min  
 Response: 32335181  
 Conc: 136.88 ng/ml



#42 AR-1268-2

R.T.: 8.098 min  
 Delta R.T.: -0.005 min  
 Response: 72947728  
 Conc: 347.59 ng/ml

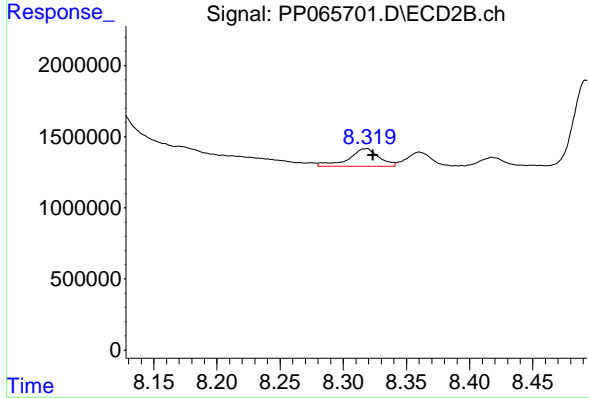




#43 AR-1268-3

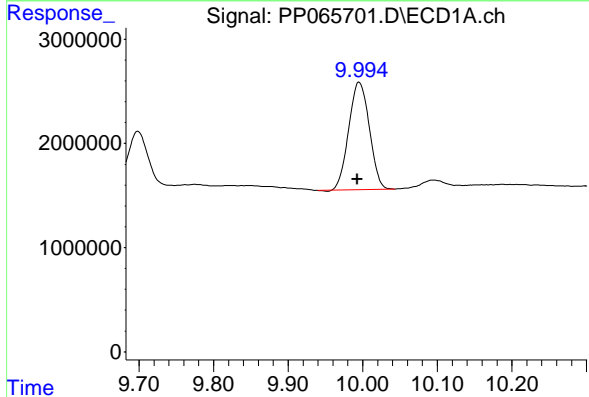
R.T.: 9.527 min  
 Delta R.T.: 0.000 min  
 Response: 1616602  
 Conc: 7.96 ng/ml

Instrument : ECD\_P  
 ClientSampleId : WCS-TPJMS



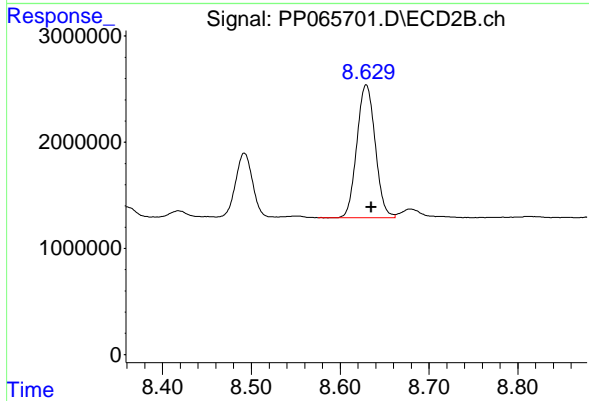
#43 AR-1268-3

R.T.: 8.318 min  
 Delta R.T.: -0.006 min  
 Response: 2057226  
 Conc: 11.77 ng/ml



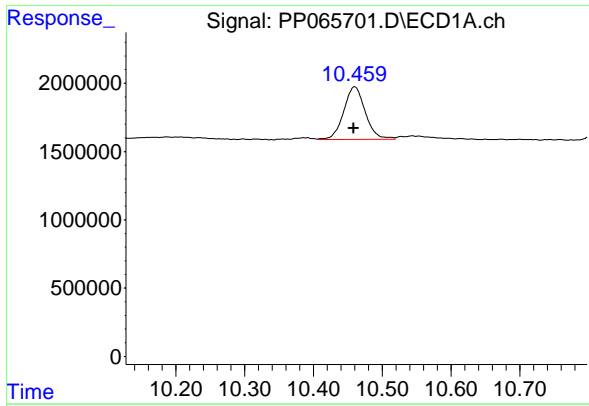
#44 AR-1268-4

R.T.: 9.995 min  
 Delta R.T.: 0.003 min  
 Response: 19794827  
 Conc: 237.54 ng/ml



#44 AR-1268-4

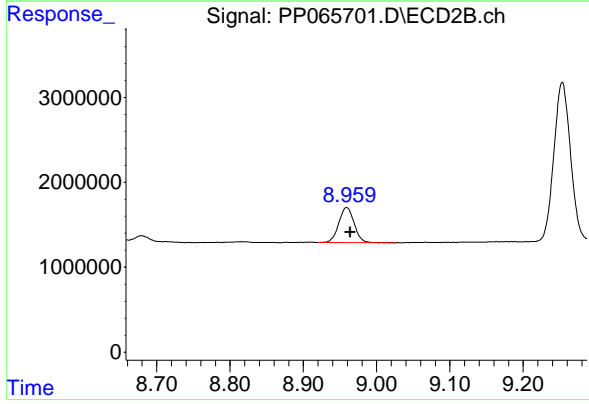
R.T.: 8.629 min  
 Delta R.T.: -0.006 min  
 Response: 17979311  
 Conc: 237.14 ng/ml



#45 AR-1268-5

R.T.: 10.460 min  
Delta R.T.: 0.002 min  
Response: 8424365  
Conc: 12.68 ng/ml

Instrument :  
ECD\_P  
ClientSampleId :  
WCS-TPJMS



#45 AR-1268-5

R.T.: 8.959 min  
Delta R.T.: -0.005 min  
Response: 6025152  
Conc: 11.50 ng/ml