

Data Path : Z:\pestpcbsrv\HPCHEM1\ECD\_P\Data\PP061521\  
 Data File : PP036459.D  
 Signal(s) : Signal #1: ECD1A.CH Signal #2: ECD2B.CH  
 Acq On : 15 Jun 2021 16:15  
 Operator : DD\AJ  
 Sample : M2672-04  
 Misc :  
 ALS Vial : 8 Sample Multiplier: 1

Instrument :  
 ECD\_P  
 ClientSampleId :  
 17-B6(20-24)

Integration File signal 1: autoint1.e  
 Integration File signal 2: autoint2.e  
 Quant Time: Jun 16 07:22:39 2021  
 Quant Method : Z:\pestpcbsrv\HPCHEM1\ECD\_P\methods\PP061121.M  
 Quant Title : GC EXTRACTABLES  
 QLast Update : Sat Jun 12 04:04:46 2021  
 Response via : Initial Calibration  
 Integrator: ChemStation 6890 Scale Mode: Small noise peaks clipped

Volume Inj. : 2 µl  
 Signal #1 Phase : ZB-MR1 Signal #2 Phase: ZB-MR2  
 Signal #1 Info : 30Mx0.32mmx 0.50µ Signal #2 Info : 30M x 0.32mm x 0.25µm

Compound	RT#1	RT#2	Resp#1	Resp#2	ng/ml	ng/ml
-----						
System Monitoring Compounds						
1) SA Tetrachlo...	4.965	3.958	1095755	794492	25.951	26.450
2) SA Decachlor...	11.002	9.266	1067395	764092	29.560	23.917

Target Compounds

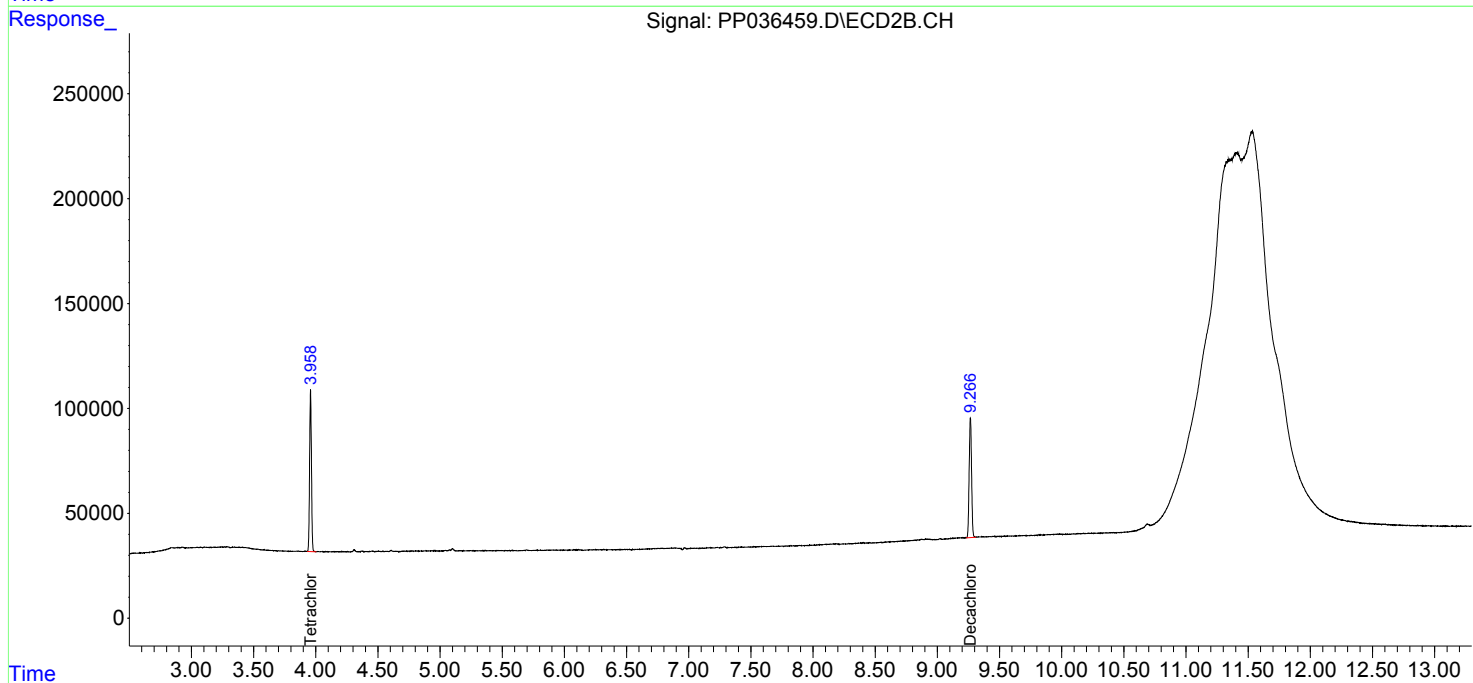
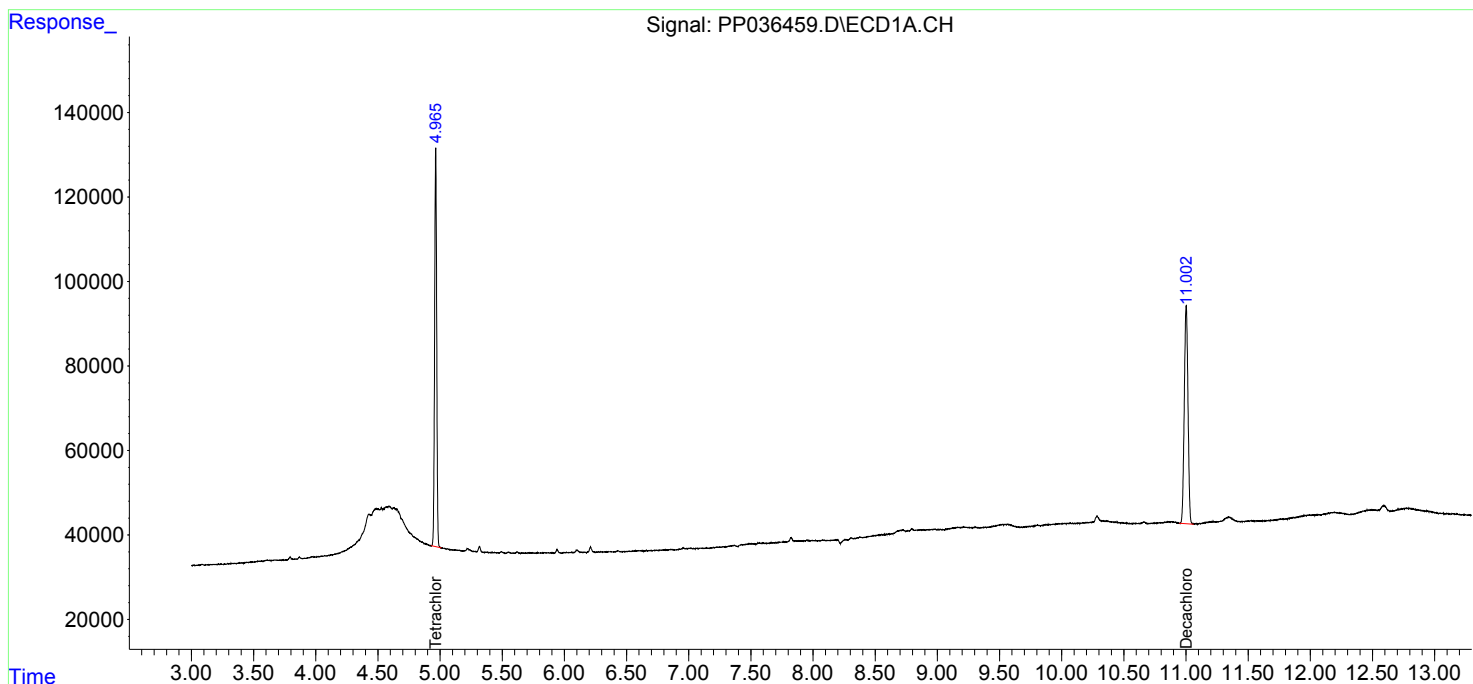
(f)=RT Delta > 1/2 Window (#)=Amounts differ by > 25% (m)=manual int.

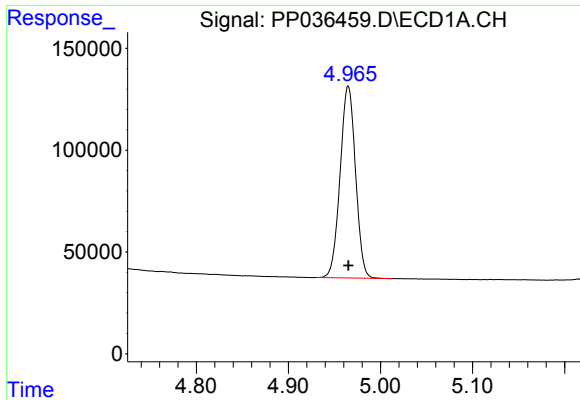
Data Path : Z:\pestpcbsrv\HPCHEM1\ECD\_P\Data\PP061521\  
 Data File : PP036459.D  
 Signal(s) : Signal #1: ECD1A.CH Signal #2: ECD2B.CH  
 Acq On : 15 Jun 2021 16:15  
 Operator : DD\AJ  
 Sample : M2672-04  
 Misc :  
 ALS Vial : 8 Sample Multiplier: 1

Instrument :  
 ECD\_P  
 ClientSampleId :  
 17-B6(20-24)

Integration File signal 1: autoint1.e  
 Integration File signal 2: autoint2.e  
 Quant Time: Jun 16 07:22:39 2021  
 Quant Method : Z:\pestpcbsrv\HPCHEM1\ECD\_P\methods\PP061121.M  
 Quant Title : GC EXTRACTABLES  
 QLast Update : Sat Jun 12 04:04:46 2021  
 Response via : Initial Calibration  
 Integrator: ChemStation 6890 Scale Mode: Small noise peaks clipped

Volume Inj. : 2 µl  
 Signal #1 Phase : ZB-MR1 Signal #2 Phase: ZB-MR2  
 Signal #1 Info : 30Mx0.32mmx 0.50µ Signal #2 Info : 30M x 0.32mm x 0.25µm

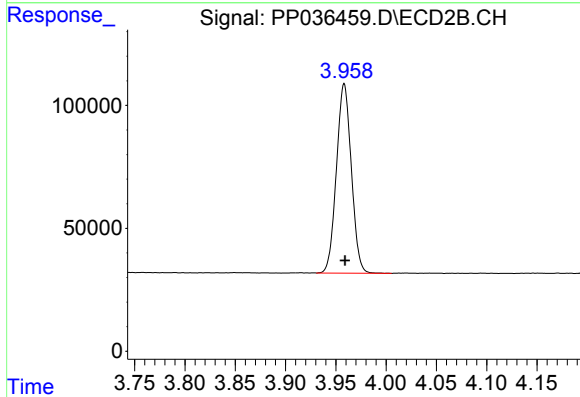




#1 Tetrachloro-m-xylene

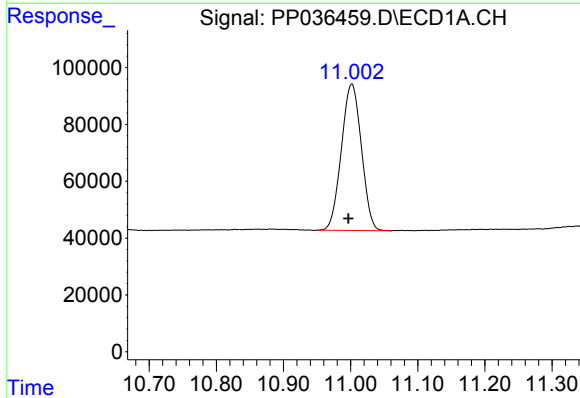
R.T.: 4.965 min  
 Delta R.T.: 0.000 min  
 Response: 1095755  
 Conc: 25.95 ng/ml

Instrument :  
 ECD\_P  
 ClientSampleId :  
 17-B6(20-24)



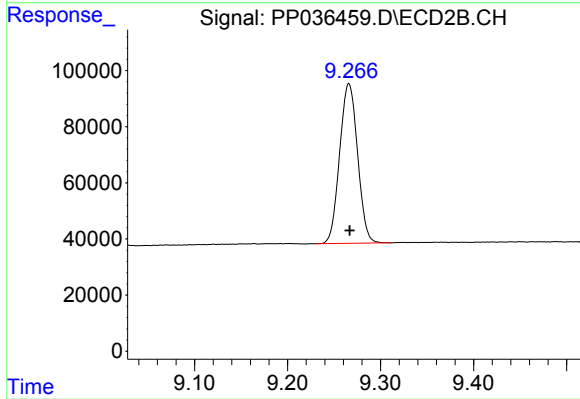
#1 Tetrachloro-m-xylene

R.T.: 3.958 min  
 Delta R.T.: 0.000 min  
 Response: 794492  
 Conc: 26.45 ng/ml



#2 Decachlorobiphenyl

R.T.: 11.002 min  
 Delta R.T.: 0.005 min  
 Response: 1067395  
 Conc: 29.56 ng/ml



#2 Decachlorobiphenyl

R.T.: 9.266 min  
 Delta R.T.: -0.001 min  
 Response: 764092  
 Conc: 23.92 ng/ml