

Data Path : Z:\pestpcbsrv\HPCHEM1\ECD\_P\Data\PP061523\  
 Data File : PP058485.D  
 Signal(s) : Signal #1: ECD1A.ch Signal #2: ECD2B.ch  
 Acq On : 15 Jun 2023 23:32  
 Operator : YP\AJ  
 Sample : AR1242ICC250  
 Misc :  
 ALS Vial : 13 Sample Multiplier: 1

**Instrument :**  
 ECD\_P  
**ClientSampleId :**  
 AR1242ICC250

Integration File signal 1: autoint1.e  
 Integration File signal 2: autoint2.e  
 Quant Time: Jun 16 04:23:40 2023  
 Quant Method : Z:\pestpcbsrv\HPCHEM1\ECD\_P\methods\PP061523.M  
 Quant Title : GC EXTRACTABLES  
 QLast Update : Fri Jun 16 03:42:54 2023  
 Response via : Initial Calibration  
 Integrator: ChemStation

Volume Inj. : 2 µl  
 Signal #1 Phase : ZB-MR1 Signal #2 Phase: ZB-MR2  
 Signal #1 Info : 30Mx0.32mmx 0.50µ Signal #2 Info : 30M x 0.32mm x 0.25µm

Compound	RT#1	RT#2	Resp#1	Resp#2	ng/ml	ng/ml
-----						
System Monitoring Compounds						
1) SA Tetrachlo...	4.457	3.768	59332819	42335363	24.856	24.982
2) SA Decachlor...	10.359	8.871	35025031	38041716	24.568	26.239
Target Compounds						
16) L4 AR-1242-1	5.639	4.869	13176729	11526047	259.614	262.993
17) L4 AR-1242-2	5.663	4.889	19135919	15290608	259.269	259.851
18) L4 AR-1242-3	5.726	5.068	11941928	8575774	261.944	258.101
19) L4 AR-1242-4	5.825	5.152	9711891	9217527	259.115	260.768
20) L4 AR-1242-5	6.571	5.680	9134007	11049578	261.090	260.601
-----						

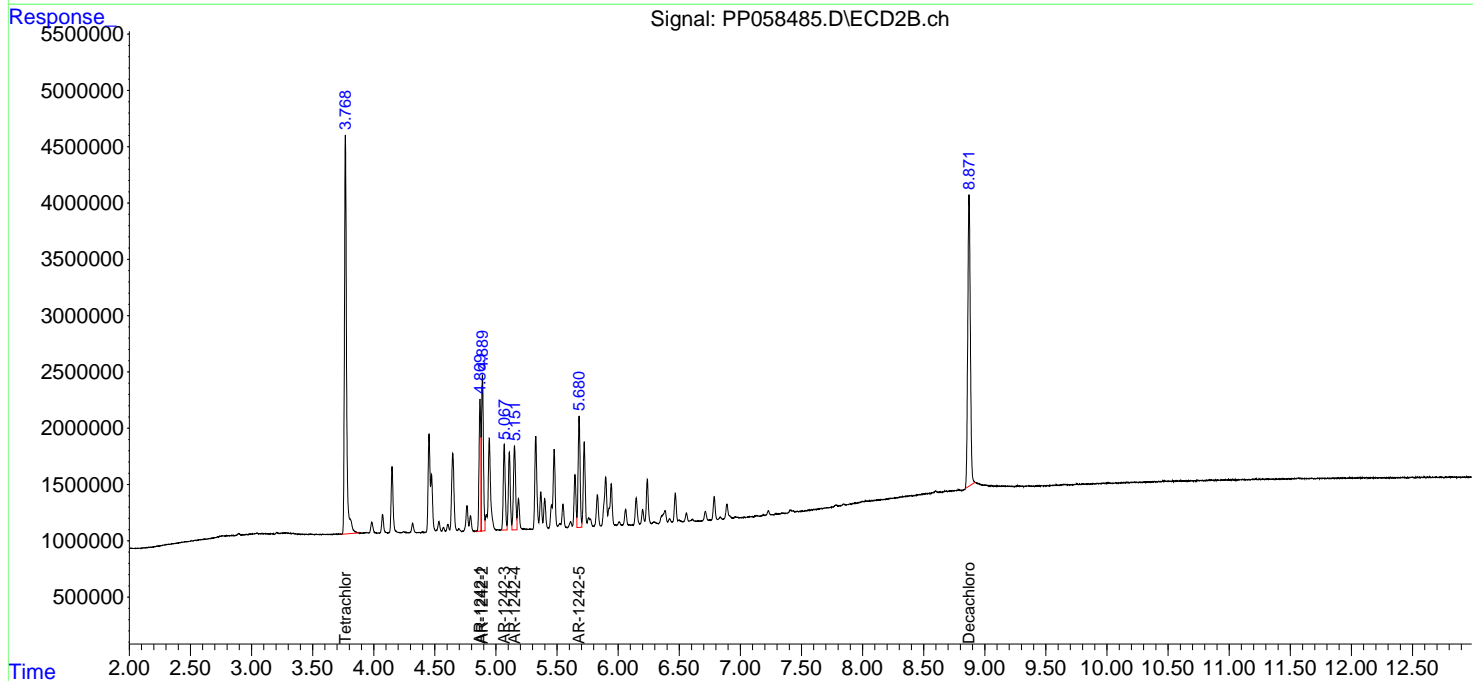
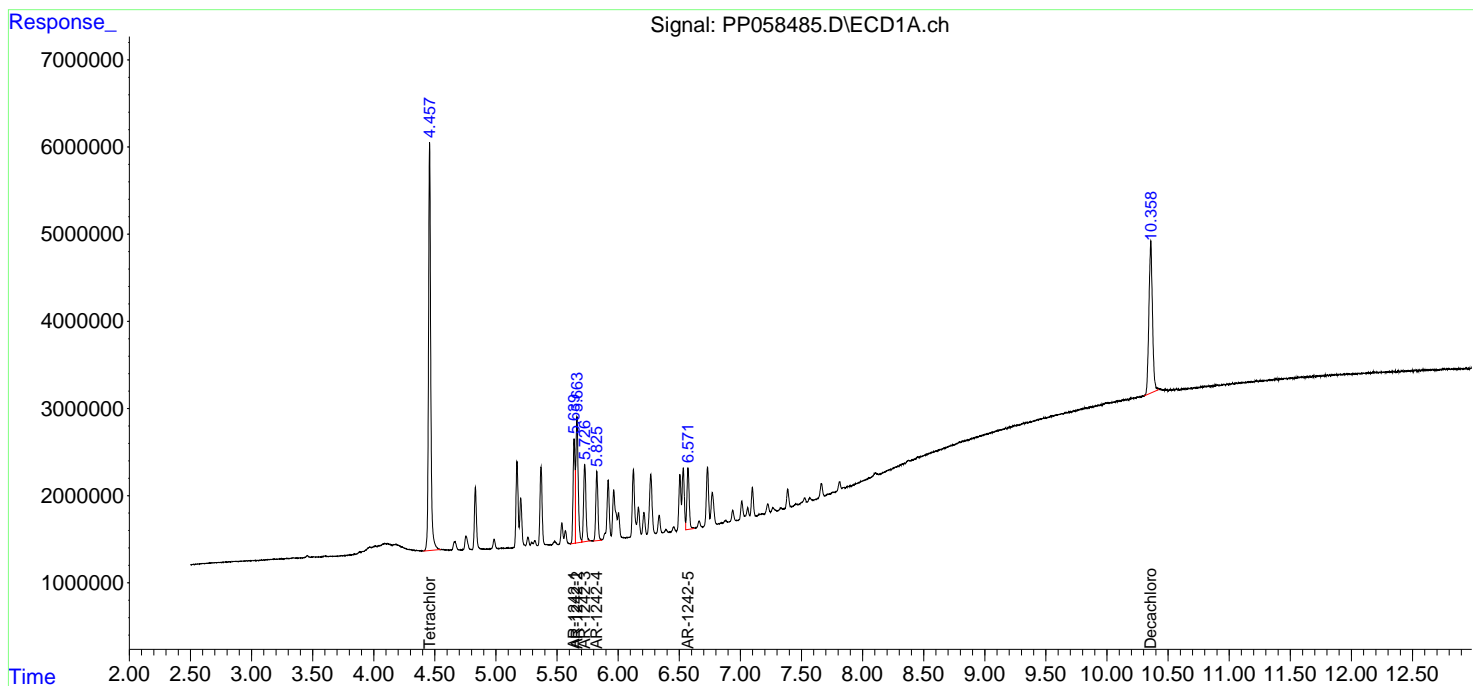
(f)=RT Delta > 1/2 Window (#)=Amounts differ by > 25% (m)=manual int.

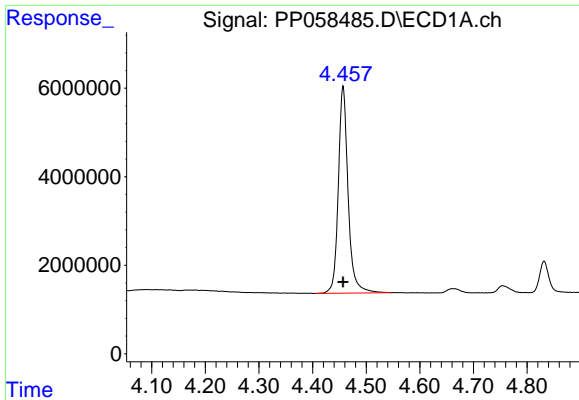
Data Path : Z:\pestpcbsrv\HPCHEM1\ECD\_P\Data\PP061523\  
 Data File : PP058485.D  
 Signal(s) : Signal #1: ECD1A.ch Signal #2: ECD2B.ch  
 Acq On : 15 Jun 2023 23:32  
 Operator : YP\AJ  
 Sample : AR1242ICC250  
 Misc :  
 ALS Vial : 13 Sample Multiplier: 1

Instrument :  
 ECD\_P  
 ClientSampleId :  
 AR1242ICC250

Integration File signal 1: autoint1.e  
 Integration File signal 2: autoint2.e  
 Quant Time: Jun 16 04:23:40 2023  
 Quant Method : Z:\pestpcbsrv\HPCHEM1\ECD\_P\methods\PP061523.M  
 Quant Title : GC EXTRACTABLES  
 QLast Update : Fri Jun 16 03:42:54 2023  
 Response via : Initial Calibration  
 Integrator: ChemStation

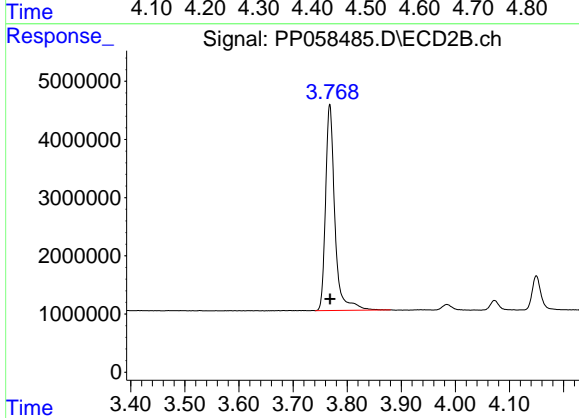
Volume Inj. : 2 µl  
 Signal #1 Phase : ZB-MR1 Signal #2 Phase: ZB-MR2  
 Signal #1 Info : 30Mx0.32mmx 0.50µ Signal #2 Info : 30M x 0.32mm x 0.25µm



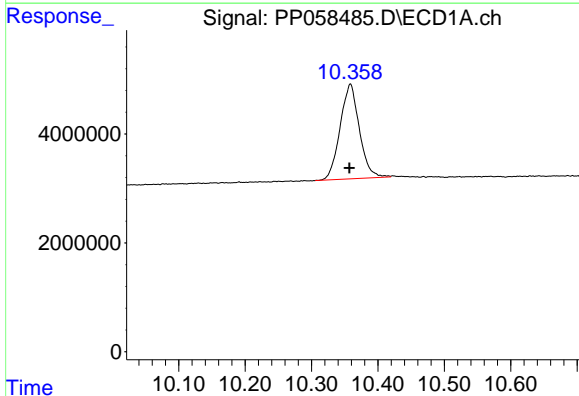


#1 Tetrachloro-m-xylene  
 R.T.: 4.457 min  
 Delta R.T.: 0.000 min  
 Response: 59332819  
 Conc: 24.86 ng/ml

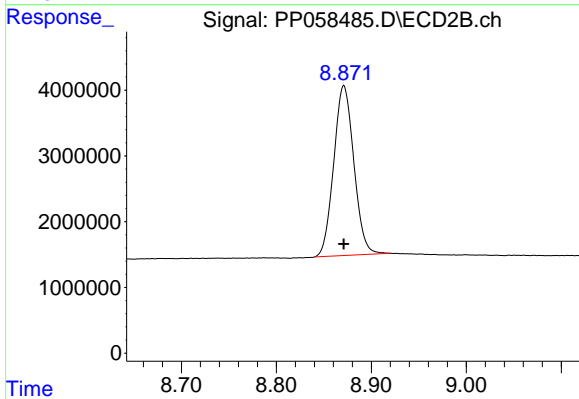
Instrument :  
 ECD\_P  
 ClientSampleId :  
 AR1242ICC250



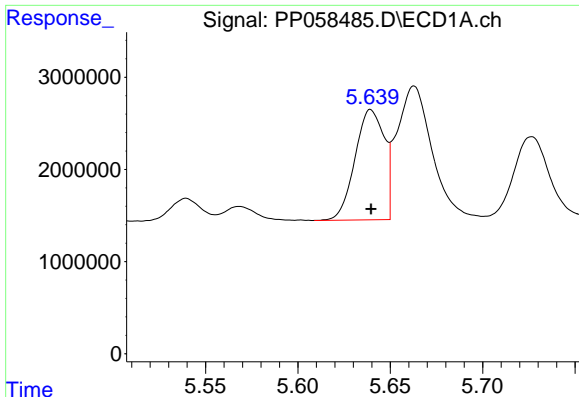
#1 Tetrachloro-m-xylene  
 R.T.: 3.768 min  
 Delta R.T.: 0.000 min  
 Response: 42335363  
 Conc: 24.98 ng/ml



#2 Decachlorobiphenyl  
 R.T.: 10.359 min  
 Delta R.T.: 0.002 min  
 Response: 35025031  
 Conc: 24.57 ng/ml



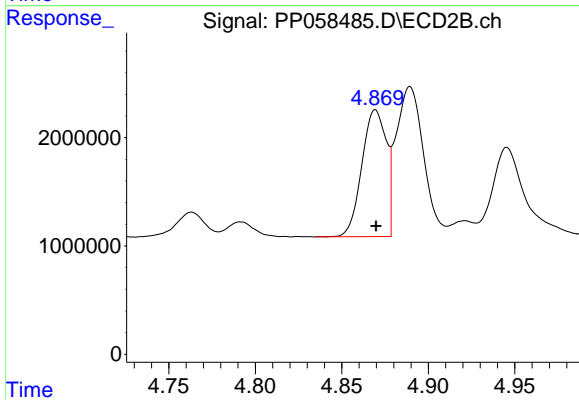
#2 Decachlorobiphenyl  
 R.T.: 8.871 min  
 Delta R.T.: 0.000 min  
 Response: 38041716  
 Conc: 26.24 ng/ml



#16 AR-1242-1

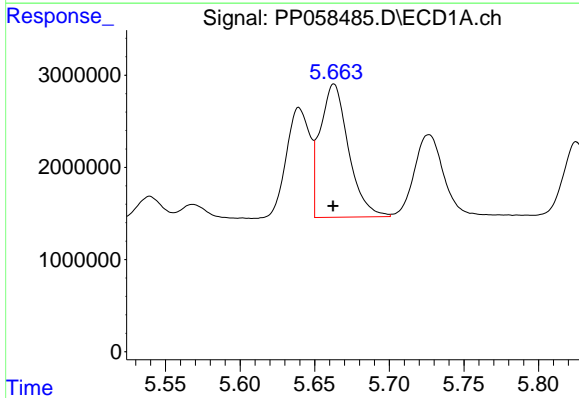
R.T.: 5.639 min  
 Delta R.T.: 0.000 min  
 Response: 13176729  
 Conc: 259.61 ng/ml

Instrument :  
 ECD\_P  
 ClientSampleId :  
 AR1242ICC250



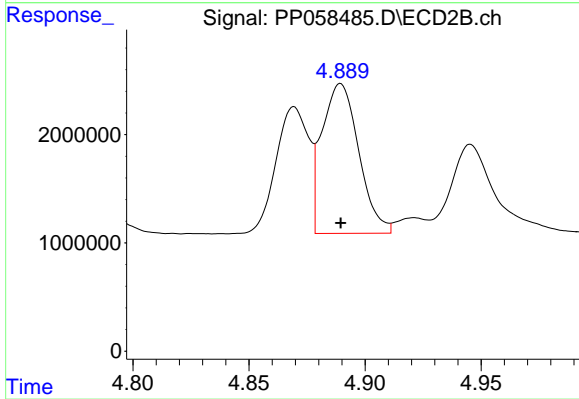
#16 AR-1242-1

R.T.: 4.869 min  
 Delta R.T.: 0.000 min  
 Response: 11526047  
 Conc: 262.99 ng/ml



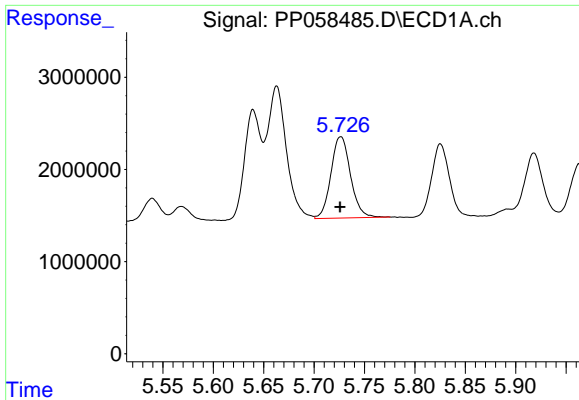
#17 AR-1242-2

R.T.: 5.663 min  
 Delta R.T.: 0.000 min  
 Response: 19135919  
 Conc: 259.27 ng/ml



#17 AR-1242-2

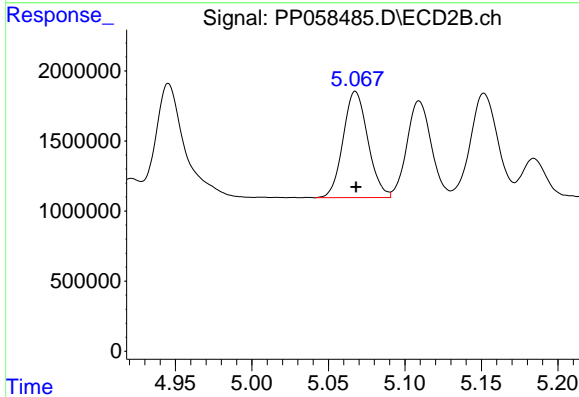
R.T.: 4.889 min  
 Delta R.T.: 0.000 min  
 Response: 15290608  
 Conc: 259.85 ng/ml



#18 AR-1242-3

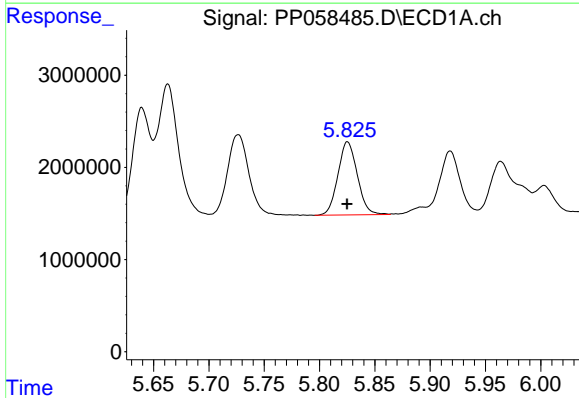
R.T.: 5.726 min  
 Delta R.T.: 0.000 min  
 Response: 11941928  
 Conc: 261.94 ng/ml

Instrument :  
 ECD\_P  
 ClientSampleId :  
 AR1242ICC250



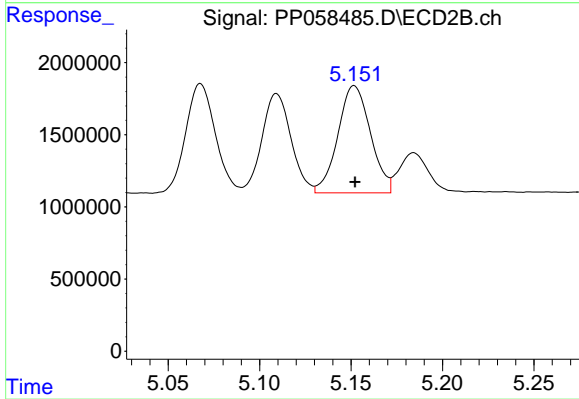
#18 AR-1242-3

R.T.: 5.068 min  
 Delta R.T.: 0.000 min  
 Response: 8575774  
 Conc: 258.10 ng/ml



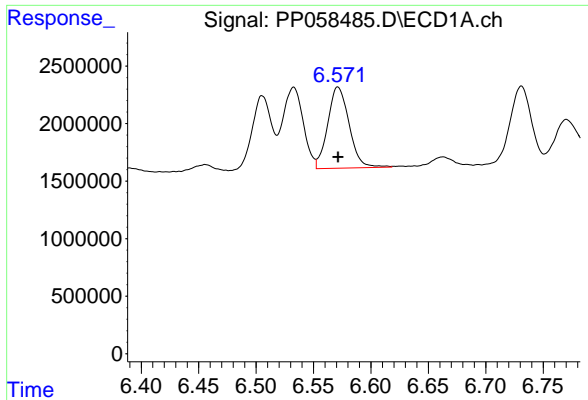
#19 AR-1242-4

R.T.: 5.825 min  
 Delta R.T.: 0.000 min  
 Response: 9711891  
 Conc: 259.12 ng/ml



#19 AR-1242-4

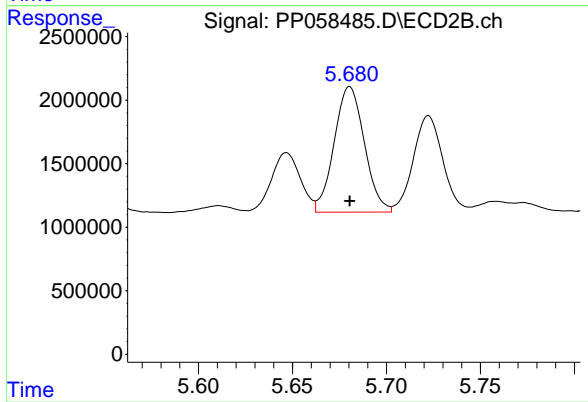
R.T.: 5.152 min  
 Delta R.T.: 0.000 min  
 Response: 9217527  
 Conc: 260.77 ng/ml



#20 AR-1242-5

R.T.: 6.571 min  
Delta R.T.: 0.000 min  
Response: 9134007  
Conc: 261.09 ng/ml

Instrument :  
ECD\_P  
ClientSampleId :  
AR1242ICC250



#20 AR-1242-5

R.T.: 5.680 min  
Delta R.T.: 0.000 min  
Response: 11049578  
Conc: 260.60 ng/ml